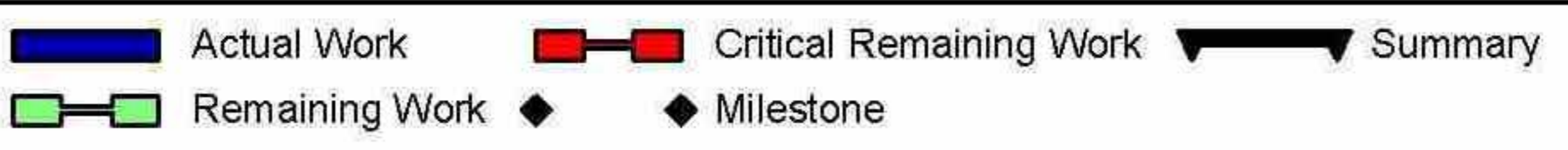


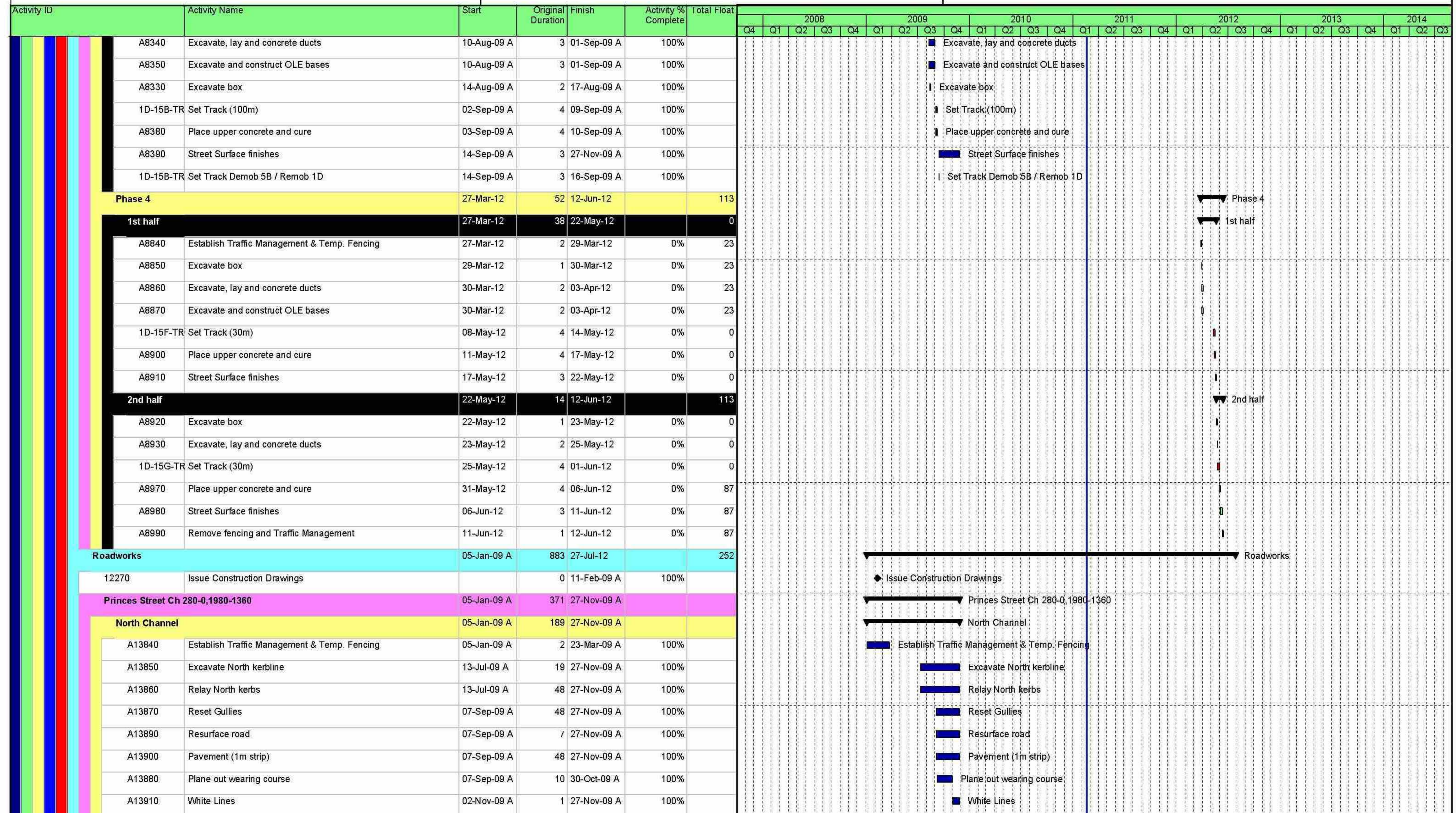
Date	Revision	Checked	Approved
11-Feb-11	ETN Revision 1 Programme - Progress to 18 Feb 11	JAC	BSC



BFB00003289_0213

Programme Revision 1
 tracked for V67 Design Programme
 and Progress to 18 February 2011

EDINBURGH TRAM NETWORK



Date	Revision	Checked	Approved
11-Feb-11	ETN Revision 1 Programme - Progress to 18 Feb 11	JAC	BSC

■ Actual Work
 ■ Critical Remaining Work
 ▾ Summary
■ Remaining Work
 ◆ Milestone

BFB00003289_0214

Programme Revision 1
 tracked for V67 Design Programme
 and Progress to 18 February 2011

EDINBURGH TRAM NETWORK



Activity ID	Activity Name	Start	Original Duration	Finish	Activity % Complete	Total Float	Gantt Chart																												
							2008				2009				2010				2011				2012				2013				2014				
							Q4	Q1	Q2	Q3	Q4	Q1	Q2	Q3	Q4	Q1	Q2	Q3	Q4	Q1	Q2	Q3	Q4	Q1	Q2	Q3	Q4	Q1	Q2	Q3	Q4	Q1	Q2	Q3	Q4
A13920	Street Lighting / Road signs	02-Nov-09 A	5	27-Nov-09 A	100%		<div style="display: flex; justify-content: space-between;"> Street Lighting / Road signs Remove fencing and Traffic Management </div>																												
A13930	Remove fencing and Traffic Management	27-Nov-09 A	1	27-Nov-09 A	100%		<div style="display: flex; justify-content: space-between;"> South Channel </div>																												
South Channel							<div style="display: flex; justify-content: space-between;"> Establish Traffic Management & Temp. Fencing Excavate South kerblines Relay South kerbs Reset Gullies Plane out wearing course Resurface road Pavement (1m strip) White Lines </div>																												
A13940	Establish Traffic Management & Temp. Fencing	05-Jan-09 A	2	23-Mar-09 A	100%		<div style="display: flex; justify-content: space-between;"> Lothian Road Junction Ch 440-280 </div>																												
A13950	Excavate South kerblines	07-Sep-09 A	19	27-Nov-09 A	100%		<div style="display: flex; justify-content: space-between;"> Phase 3 </div>																												
A13960	Relay South kerbs	07-Sep-09 A	48	27-Nov-09 A	100%		<div style="display: flex; justify-content: space-between;"> Establish Traffic Management & Temp. Fencing Excavate South kerblines Relay South kerbs Reset Gullies Plane out wearing course Resurface road Pavement (1m strip) White Lines </div>																												
A13970	Reset Gullies	07-Sep-09 A	48	27-Nov-09 A	100%		<div style="display: flex; justify-content: space-between;"> Phase 2 </div>																												
A13980	Plane out wearing course	07-Sep-09 A	10	30-Oct-09 A	100%																														
A13990	Resurface road	07-Sep-09 A	30	27-Nov-09 A	100%																														
A14000	Pavement (1m strip)	07-Sep-09 A	48	27-Nov-09 A	100%																														
A14010	White Lines	02-Nov-09 A	1	27-Nov-09 A	100%																														
A14020	Street Lighting / Road signs	02-Nov-09 A	5	27-Nov-09 A	100%																														
A14030	Remove fencing and Traffic Management	27-Nov-09 A	3	27-Nov-09 A	100%																														
Lothian Road Junction Ch 440-280																																			
Phase 3																																			
A8580	Establish Traffic Management & Temp. Fencing	20-Sep-11	2	22-Sep-11	0%	35																													
A8590	Excavate South kerblines	22-Sep-11	2	26-Sep-11	0%	35																													
A8600	Relay South kerbs	23-Sep-11	4	29-Sep-11	0%	35																													
A8610	Reset Gullies	26-Sep-11	4	30-Sep-11	0%	35																													
A8640	Pavement (1m strip)	29-Sep-11	4	05-Oct-11	0%	37																													
A8660	Street Lighting / Road signs	29-Sep-11	6	07-Oct-11	0%	35																													
A8620	Plane out wearing course	30-Sep-11	1	03-Oct-11	0%	35																													
A8630	Resurface road	03-Oct-11	3	06-Oct-11	0%	35																													
A8650	White Lines	06-Oct-11	1	07-Oct-11	0%	35																													
A8665	Remove fencing and Traffic Management	07-Oct-11	1	10-Oct-11	0%	35																													
Phase 2																																			
A8490	Establish Traffic Management & Temp. Fencing	18-Feb-11	2	21-Feb-11	0%	144																													
A8500	Excavate North kerblines	22-Feb-11	2	23-Feb-11	0%	144																													
A8510	Relay North kerbs	23-Feb-11	5	01-Mar-11	0%	144																													
A8520	Reset Gullies	24-Feb-11	5	02-Mar-11	0%	144																													
A8550	Pavement (1m strip)	02-Mar-11	5	08-Mar-11	0%	146																													
A8570	Street Lighting / Road signs	02-Mar-11	7	10-Mar-11	0%	144																													
A8530	Plane out wearing course	03-Mar-11	2	04-Mar-11	0%	144																													
A8540	Resurface road	13-Sep-11	3	16-Sep-11	0%	35																													
A8560	White Lines	16-Sep-11	1	19-Sep-11	0%	35																													

Date	Revision	Checked	Approved
11-Feb-11	ETN Revision 1 Programme - Progress to 18 Feb 11	JAC	BSC

Page 28 of 57
edintram-9a-55

█ Actual Work █ Critical Remaining Work Summary
█ Remaining Work ◆ Milestone

BFB00003289_0215

Programme Revision 1
 tracked for V67 Design Programme
 and Progress to 18 February 2011

EDINBURGH TRAM NETWORK



Activity ID	Activity Name	Start	Original Duration	Finish	Activity % Complete	Total Float	2008												2009				2010				2011				2012				2013				2014		
							Q4	Q1	Q2	Q3	Q4	Q1	Q2	Q3	Q4	Q1	Q2	Q3	Q4	Q1	Q2	Q3	Q4	Q1	Q2	Q3	Q4	Q1	Q2	Q3	Q4	Q1	Q2	Q3							
1st half																																			▼ 1st half						
A7940	Establish Traffic Management & Temp. Fencing	26-Jun-12	2	28-Jun-12	0%	44																																			
A7960	Excavate box	28-Jun-12	2	02-Jul-12	0%	44																																			
A7970	Excavate, lay and concrete ducts	02-Jul-12	3	05-Jul-12	0%	44																																			
A7980	Excavate and construct OLE bases	05-Jul-12	3	10-Jul-12	0%	44																																			
1D-14B-TR	Set Track (90m)	10-Jul-12	4	16-Jul-12	0%	12																																			
A8010	Place upper concrete and cure	13-Jul-12	4	19-Jul-12	0%	41																																			
A8020	Street Surface finishes	19-Jul-12	3	24-Jul-12	0%	41																																			
2nd half																																			▶ 2nd half						
A8030	Excavate box	24-Jul-12	2	26-Jul-12	0%	41																																			
A8040	Excavate, lay and concrete ducts	26-Jul-12	3	02-Aug-12	0%	41																																			
1D-14C-TR	Set Track (90m)	02-Nov-12	4	08-Nov-12	0%	0																																			
A8080	Place upper concrete and cure	07-Nov-12	4	13-Nov-12	0%	0																																			
A8090	Street Surface finishes	13-Nov-12	3	16-Nov-12	0%	0																																			
A8095	Remove fencing and Traffic Management	16-Nov-12	1	19-Nov-12	0%	0																																			
Haymarket Ch 1250-1125																																			▶ Haymarket Ch 1250-1125						
Phase 5																																			▶ Phase 5						
2nd half																																			▶ 2nd half						
A7010	Excavate box	20-Jan-12	1	23-Jan-12	0%	50																																			
A7020	Excavate, lay and concrete ducts	23-Jan-12	2	25-Jan-12	0%	50																																			
1D-14K-TR	Set Track (54m)	27-Mar-12	4	02-Apr-12	0%	6																																			
A7060	Place upper concrete and cure	30-Mar-12	4	05-Apr-12	0%	17																																			
A7070	Street Surface finishes	05-Apr-12	3	11-Apr-12	0%	17																																			
A7075	Remove fencing and Traffic Management	11-Apr-12	1	12-Apr-12	0%	17																																			
1st half																																			▶ 1st half						
A6920	Establish Traffic Management & Temp. Fencing	24-Nov-11	2	28-Nov-11	0%	0																																			
A6940	Excavate box	28-Nov-11	1	29-Nov-11	0%	0																																			
A6950	Excavate, lay and concrete ducts	29-Nov-11	2	01-Dec-11	0%	0																																			
A6960	Excavate and construct OLE bases	29-Nov-11	2	01-Dec-11	0%	0																																			
1D-14J-TR	Set Track (54m)	01-Dec-11	4	12-Jan-12	0%	0																																			
A6990	Place upper concrete and cure	11-Jan-12	4	17-Jan-12	0%	50																																			
A7000	Street Surface finishes	17-Jan-12	3	20-Jan-12	0%	50																																			
Phase 6a																																			▶ Phase 6a						
1st half																																			▶ 1st half						
A7080	Establish Traffic Management & Temp. Fencing	12-Apr-12	2	16-Apr-12	0%	17																																			

Date	Revision	Checked	Approved	Page 30 of 57
11-Feb-11	ETN Revision 1 Programme - Progress to 18 Feb 11	JAC	BSC	edintram-9a-55

■ Actual Work ■ Critical Remaining Work ▶ Summary
■ Remaining Work ◆ Milestone

BFB00003289_0217

EDINBURGH TRAM NETWORK



Activity ID	Activity Name	Start	Original Duration	Finish	Activity % Complete	Total Float	2008				2009				2010				2011				2012				2013			2014									
							Q4	Q1	Q2	Q3	Q4	Q1	Q2	Q3	Q4	Q1	Q2	Q3	Q4	Q1	Q2	Q3	Q4	Q1	Q2	Q3	Q4	Q1	Q2	Q3	Q4	Q1	Q2	Q3					
A7100	Excavate box	16-Apr-12	1	17-Apr-12	0%	17																																	
A7110	Excavate, lay and concrete ducts	17-Apr-12	2	19-Apr-12	0%	17																																	
A7120	Excavate and construct OLE bases	17-Apr-12	2	19-Apr-12	0%	17																																	
1D-14L-TR	Set Track (54m)	14-May-12	3	17-May-12	0%	1																																	
A7150	Place upper concrete and cure	17-May-12	3	22-May-12	0%	1																																	
A7160	Street Surface finishes	22-May-12	3	25-May-12	0%	1																																	
2nd half		25-May-12	14	15-Jun-12		82																																	
A7170	Excavate box	25-May-12	1	29-May-12	0%	1																																	
A7180	Excavate, lay and concrete ducts	29-May-12	2	31-May-12	0%	1																																	
1D-14M-TR	Set Track	01-Jun-12	3	06-Jun-12	0%	0																																	
A7220	Place upper concrete and cure	06-Jun-12	3	11-Jun-12	0%	56																																	
A7230	Street Surface finishes	11-Jun-12	3	14-Jun-12	0%	56																																	
A7235	Remove fencing and Traffic Management	14-Jun-12	1	15-Jun-12	0%	56																																	
Phase 3		31-Mar-11	124	26-Sep-11		0																																	
1st half		31-Mar-11	110	06-Sep-11		0																																	
A6570	Establish Traffic Management & Temp. Fencing	31-Mar-11	2	01-Apr-11	0%	71																																	
A6580	Excavate box	04-Apr-11	1	04-Apr-11	0%	71																																	
A6590	Excavate, lay and concrete ducts	05-Apr-11	2	06-Apr-11	0%	71																																	
A6600	Excavate and construct OLE bases	05-Apr-11	2	06-Apr-11	0%	71																																	
1D-14H-TR	Set Track (54m)	19-Jul-11	4	25-Jul-11	0%	0																																	
A6630	Place upper concrete and cure	22-Jul-11	4	28-Jul-11	0%	0																																	
A6640	Street Surface finishes	28-Jul-11	3	06-Sep-11	0%	0																																	
2nd half		06-Sep-11	14	26-Sep-11		0																																	
A6650	Excavate box	06-Sep-11	1	07-Sep-11	0%	0																																	
A6660	Excavate, lay and concrete ducts	07-Sep-11	2	09-Sep-11	0%	0																																	
1D-14I-TR	Set Track (54m)	09-Sep-11	4	15-Sep-11	0%	0																																	
A6700	Place upper concrete and cure	14-Sep-11	4	20-Sep-11	0%	0																																	
A6710	Street Surface finishes	20-Sep-11	3	23-Sep-11	0%	0																																	
A6720	Remove fencing and Traffic Management	23-Sep-11	1	26-Sep-11	0%	0																																	
Torphichen Ch 1125-940		18-Nov-11	224	17-Oct-12		23																																	
Phase 2		20-Jul-12	62	17-Oct-12		23																																	
2nd half		20-Sep-12	19	17-Oct-12		23																																	
A7610	Excavate box	20-Sep-12	1	21-Sep-12	0%	28																																	
A7620	Excavate, lay and concrete ducts	21-Sep-12	2	25-Sep-12	0%	28																																	
1D-14G-TR	Set Track	02-Oct-12	4	08-Oct-12	0%	23																																	

Date	Revision	Checked	Approved	Page 31 of 57	Actual Work	Critical Remaining Work	Summary
11-Feb-11	ETN Revision 1 Programme - Progress to 18 Feb 11	JAC	BSC	edintram-9a-55	Remaining Work	Milestone	

BFB00003289_0218

Programme Revision 1
 tracked for V67 Design Programme
 and Progress to 18 February 2011

EDINBURGH TRAM NETWORK



Activity ID	Activity Name	Start	Original Duration	Finish	Activity % Complete	Total Float	2008				2009				2010				2011				2012				2013				2014			
							Q4	Q1	Q2	Q3	Q4	Q1	Q2	Q3	Q4	Q1	Q2	Q3	Q4	Q1	Q2	Q3	Q4	Q1	Q2	Q3	Q4	Q1	Q2	Q3	Q4	Q1	Q2	Q3
A7660	Place upper concrete and cure	05-Oct-12	4	11-Oct-12	0%	23																												
A7670	Street Surface finishes	11-Oct-12	3	16-Oct-12	0%	23																												
A7675	Remove fencing and Traffic Management	16-Oct-12	1	17-Oct-12	0%	23																												
1st half		20-Jul-12	43	20-Sep-12		28																												
A7520	Establish Traffic Management & Temp. Fencing	20-Jul-12	2	24-Jul-12	0%	31																												
A7540	Excavate box	24-Jul-12	1	25-Jul-12	0%	31																												
A7550	Excavate, lay and concrete ducts	25-Jul-12	2	27-Jul-12	0%	31																												
1D-14F-TR	Set Track (40m) Demob 1B / Remob 1D	26-Jul-12	3	02-Aug-12	0%	4																												
A7560	Excavate and construct OLE bases	27-Jul-12	2	02-Aug-12	0%	31																												
1D-14F-TR	Set Track (40m)	02-Aug-12	4	12-Sep-12	0%	4																												
A7590	Place upper concrete and cure	11-Sep-12	4	17-Sep-12	0%	28																												
A7600	Street Surface finishes	17-Sep-12	3	20-Sep-12	0%	28																												
Phase 1		18-Nov-11	86	02-Apr-12		133																												
1st half		18-Nov-11	41	30-Jan-12		25																												
A7360	Establish Traffic Management & Temp. Fencing	18-Nov-11	2	22-Nov-11	0%	28																												
A7380	Excavate box	22-Nov-11	3	25-Nov-11	0%	28																												
A7390	Excavate, lay and concrete ducts	25-Nov-11	4	01-Dec-11	0%	28																												
A7400	Excavate and construct OLE bases	01-Dec-11	4	12-Jan-12	0%	28																												
1D-14D-TR	Set Track (145m)	12-Jan-12	6	20-Jan-12	0%	0																												
A7430	Place upper concrete and cure	17-Jan-12	6	25-Jan-12	0%	25																												
A7440	Street Surface finishes	25-Jan-12	3	30-Jan-12	0%	25																												
2nd half		30-Jan-12	45	02-Apr-12		133																												
A7450	Excavate box	30-Jan-12	3	02-Feb-12	0%	25																												
A7460	Excavate, lay and concrete ducts	02-Feb-12	4	08-Feb-12	0%	25																												
1D-14E-TR	Set Track (145m)	14-Mar-12	6	22-Mar-12	0%	0																												
A7500	Place upper concrete and cure	19-Mar-12	6	27-Mar-12	0%	107																												
A7510	Street Surface finishes	27-Mar-12	3	30-Mar-12	0%	107																												
A7515	Remove fencing and Traffic Management	30-Mar-12	1	02-Apr-12	0%	107																												
Shadwick Place Tram Stop		18-Feb-09 A	918	02-Nov-12		310																												
12300	Issue Construction Drawings		0	18-Feb-09 A	100%																													
640	Civil Engineering And Building Works	22-Feb-11	65	25-May-11	0%	418																												
588	Order REC Supply	16-May-12	0		0%	431																												
A4638	Access for visual inspection for E&M Tram Stop installation (01D Shadwick Place)	12-Jun-12	0		0%	434																												
A2810	Deliver and Install Shelter	28-Jun-12	10	12-Jul-12	0%	166																												
A4640	Install LV Power Supply and LV Power Equipment	12-Jul-12	25	21-Sep-12	0%	166																												

Date	Revision	Checked	Approved	Page 32 of 57 edintram-9a-55	Actual Work (Blue bar) Remaining Work (Green bar) Critical Remaining Work (Red bar) Milestone (Black diamond) Summary (Black arrow)
11-Feb-11	ETN Revision 1 Programme - Progress to 18 Feb 11	JAC	BSC		

BFB00003289_0219

Programme Revision 1
 tracked for V67 Design Programme
 and Progress to 18 February 2011

EDINBURGH TRAM NETWORK



Activity ID	Activity Name	Start	Original Duration	Finish	Activity % Complete	Total Float	2008				2009				2010				2011				2012				2013			2014				
							Q4	Q1	Q2	Q3	Q4	Q1	Q2	Q3	Q4	Q1	Q2	Q3	Q4	Q1	Q2	Q3	Q4	Q1	Q2	Q3	Q4	Q1	Q2	Q3	Q4	Q1	Q2	Q3
Phase 2							▼ Phase 2																											
A6480	Establish Traffic Management & Temp. Fencing	15-Mar-11	2	16-Mar-11	0%	71																												
A6490	Excavate for new channel and kerb line / remove existing kerbs	17-Mar-11	2	18-Mar-11	0%	71																												
A6500	Construct Kerb lines	21-Mar-11	2	22-Mar-11	0%	71																												
A6510	Reset Gullies	23-Mar-11	1	23-Mar-11	0%	73																												
A6540	Pavement Works	23-Mar-11	15	12-Apr-11	0%	71																												
A6560	Street Lighting / Traffic Signals / Road Signs	23-Mar-11	3	25-Mar-11	0%	73																												
A6520	Surface new channel	24-Mar-11	1	24-Mar-11	0%	73																												
A6550	White Lines	25-Mar-11	1	25-Mar-11	0%	73																												
A6565	Remove fencing and Traffic Management	30-Mar-11	1	30-Mar-11	0%	71																												
Phase 6b							▼ Phase 6b																											
A7240	Establish Traffic Management & Temp. Fencing	12-Apr-12	2	16-Apr-12	0%	243																												
A7250	Excavate for new channel and kerb line / remove existing kerbs	16-Apr-12	2	18-Apr-12	0%	243																												
A7260	Construct Kerb lines	18-Apr-12	5	25-Apr-12	0%	243																												
A7270	Reset Gullies	19-Apr-12	5	26-Apr-12	0%	255																												
A7290	Pavement Works	25-Apr-12	15	17-May-12	0%	243																												
A7310	Street Lighting / Traffic Signals / Road Signs	25-Apr-12	7	04-May-12	0%	251																												
A7280	Surface new channel	26-Apr-12	2	30-Apr-12	0%	255																												
A7315	Remove fencing and Traffic Management	17-May-12	1	18-May-12	0%	243																												
Phase 4a							▼ Phase 4a																											
A6730	Establish Traffic Management & Temp. Fencing	26-Sep-11	2	28-Sep-11	0%	0																												
A6740	Remove island surfacing and exc. to formation	28-Sep-11	5	05-Oct-11	0%	0																												
A6750	Construct Kerb lines	05-Oct-11	4	11-Oct-11	0%	0																												
A6760	Move Gullies	11-Oct-11	2	13-Oct-11	0%	0																												
A6790	Pavement Works	11-Oct-11	6	19-Oct-11	0%	4																												
A6810	Street Lighting / Traffic Signals / Road Signs	11-Oct-11	7	20-Oct-11	0%	3																												
A6770	Sub base	13-Oct-11	3	18-Oct-11	0%	0																												
A6775	Plane off wearing course	18-Oct-11	1	19-Oct-11	0%	0																												
A6780	Roadbase/base course/wearing course/temp ramps	19-Oct-11	3	24-Oct-11	0%	0																												
A6800	White Lines	24-Oct-11	1	25-Oct-11	0%	0																												
A6815	Remove fencing and Traffic Management	25-Oct-11	1	26-Oct-11	0%	0																												
Phase 1							▼ Phase 1																											
A6390	Establish Traffic Management & Temp. Fencing	18-Feb-11	2	21-Feb-11	0%	71																												
A6400	Remove island surfacing and exc. to formation	22-Feb-11	4	25-Feb-11	0%	71																												
A6410	Construct Kerb lines	28-Feb-11	2	01-Mar-11	0%	71																												

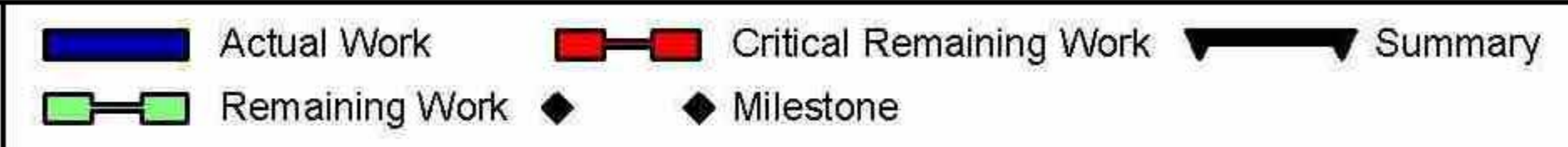
Date	Revision	Checked	Approved	Page 34 of 57 edintram-9a-55
11-Feb-11	ETN Revision 1 Programme - Progress to 18 Feb 11	JAC	BSC	

■ Actual Work ■ Critical Remaining Work ▼ Summary
■ Remaining Work ◆ Milestone

BFB00003289_0221

Activity ID	Activity Name	Start	Original Duration	Finish	Activity % Complete	Total Float	2008												2009				2010				2011				2012				2013			2014		
							Q4	Q1	Q2	Q3	Q4	Q1	Q2	Q3	Q4	Q1	Q2	Q3	Q4	Q1	Q2	Q3	Q4	Q1	Q2	Q3	Q4	Q1	Q2	Q3	Q4	Q1	Q2	Q3	Q1	Q2	Q3			
A6420	Move Gullies	02-Mar-11	2	03-Mar-11	0%	71																																		
A6450	Pavement Works	02-Mar-11	5	08-Mar-11	0%	74																																		
A6470	Street Lighting / Traffic Signals / Road Signs	02-Mar-11	5	08-Mar-11	0%	74																																		
A6430	Sub base	04-Mar-11	2	07-Mar-11	0%	71																																		
A6440	Roadbase/base course/wearing course/temp ramps	08-Mar-11	3	10-Mar-11	0%	71																																		
A6460	White Lines	11-Mar-11	1	11-Mar-11	0%	71																																		
A6475	Remove fencing and Traffic Management	14-Mar-11	1	14-Mar-11	0%	71																																		
Phase 7		15-Jun-12	15	06-Jul-12		267	▼ Phase 7																																	
A7320	Establish Traffic Management & Temp. Fencing	15-Jun-12	2	19-Jun-12	0%	224																																		
A7330	Replace north junction kerb line	19-Jun-12	6	27-Jun-12	0%	224																																		
A7350	White Lines / Traffic Signals / Road Signs	19-Jun-12	4	25-Jun-12	0%	232																																		
A7340	Rebuild splitter island	27-Jun-12	6	05-Jul-12	0%	224																																		
A7355	Remove fencing and Traffic Management	05-Jul-12	1	06-Jul-12	0%	224																																		
Shandwick Ch 850-440		18-Feb-11	60	16-May-11		303	▶ Shandwick Ch 850-440																																	
Phase 1		18-Feb-11	60	16-May-11		303	▶ Phase 1																																	
A8180	Establish Traffic Management & Temp. Fencing	18-Feb-11	2	21-Feb-11	0%	258																																		
A8190	Excavate for new channel and kerb line / remove existing kerbs	22-Feb-11	18	17-Mar-11	0%	258																																		
A8200	Construct Kerb lines	25-Feb-11	23	29-Mar-11	0%	258																																		
A8210	Reset Gullies	11-Mar-11	15	31-Mar-11	0%	278																																		
A8230	Pavement Works	30-Mar-11	31	13-May-11	0%	258																																		
A8240	Street Lighting / Traffic Signals / Road Signs	30-Mar-11	7	07-Apr-11	0%	282																																		
A8220	Surface new channel	01-Apr-11	9	13-Apr-11	0%	278																																		
A8245	Remove fencing and Traffic Management	16-May-11	1	16-May-11	0%	258																																		
Torphicen Ch 1125-940		19-Nov-12	64	28-Feb-13		140	▶ Torphicen Ch 1125-940																																	
Phase 3		19-Nov-12	64	28-Feb-13		140	▶ Phase 3																																	
South Pavement		11-Jan-13	14	31-Jan-13		116	▼ South Pavement																																	
A7700	Establish Traffic Management & Temp. Fencing	11-Jan-13	2	15-Jan-13	0%	116																																		
A7710	Excavate for new channel and kerb line / remove existing kerbs	15-Jan-13	2	17-Jan-13	0%	116																																		
A7720	Construct Kerb lines	17-Jan-13	3	22-Jan-13	0%	116																																		
A7730	Reset Gullies	22-Jan-13	2	24-Jan-13	0%	116																																		
A7750	Pavement Works	22-Jan-13	7	31-Jan-13	0%	116																																		
A7760	Street Lighting / Traffic Signals / Road Signs	22-Jan-13	3	25-Jan-13	0%	116																																		
A7740	Surface new channel	24-Jan-13	1	25-Jan-13	0%	116																																		
A7765	Remove fencing and Traffic Management	25-Jan-13	1	28-Jan-13	0%	116																																		
North Pavement		19-Nov-12	30	11-Jan-13		116	▶ North Pavement																																	

Date	Revision	Checked	Approved
11-Feb-11	ETN Revision 1 Programme - Progress to 18 Feb 11	JAC	BSC



BFB00003289_0222

Activity ID	Activity Name	Start	Original Duration	Finish	Activity % Complete	Total Float	2008												2009												2010												2011												2012												2013												2014																							
							Q4	Q1	Q2	Q3	Q4	Q1	Q2	Q3	Q4	Q1	Q2	Q3	Q4	Q1	Q2	Q3	Q4	Q1	Q2	Q3	Q4	Q1	Q2	Q3	Q4	Q1	Q2	Q3	Q4	Q1	Q2	Q3	Q4	Q1	Q2	Q3	Q4	Q1	Q2	Q3	Q4																																																							
227	Pier 3	04-Sep-08 A	30	05-Nov-08 A	100%		█ Pier 3																																																																																															
192	Pier 2	09-Sep-08 A	30	05-Nov-08 A	100%		█ Pier 2																																																																																															
498	Pier 4	27-Oct-08 A	30	04-Feb-10 A	100%														█ Pier 4																																																																																			
560	Bankseat at Gridline 6	11-Jan-10 A	40	19-Feb-10 A	100%																										█ Bankseat at Gridline 6																																																																							
508	Pier 1	11-Jan-10 A	30	12-Feb-10 A	100%																										█ Pier 1																																																																							
570	Superstructure	25-Feb-10 A	95	11-May-11	40%	165																									█ Superstructure																																																																							
580	Finishes	12-May-11	15	02-Jun-11	0%	601																																					█																																																											
Haymarket Terrace Substation		25-Mar-09 A	267	02-Sep-11		601	▬ Haymarket Terrace Substation												▬ Haymarket Terrace Substation												▬ Haymarket Terrace Substation												▬ Haymarket Terrace Substation												▬ Haymarket Terrace Substation												▬ Haymarket Terrace Substation																																			
326	Order REC supply from Scottish Power	25-Mar-09 A	0		100%																																						◆ Order REC supply from Scottish Power																																																											
A5650	Installation of TPS Equipment	18-Feb-11	30	31-Mar-11	0%	574																																					█																																																											
A5660	Install Telecom and Scada	11-Mar-11	15	31-Mar-11	0%	574																																					█																																																											
A5670	Testing and Commissioning	01-Apr-11	14	20-Apr-11	0%	574																																					█																																																											
A2698	Access for visual inspection for E&M Substation installation (02A Haymarket Terrace)	12-Apr-11	0		0%	739																																					◆ Access for visual inspection for E&M Substation installation (02A Haymarket Terrace)																																																											
A5630	Power Infeed from Public Net available inc HV cable	12-May-11	0		0%	666																																					◆ Power Infeed from Public Net available inc HV cable																																																											
A5640	Install LV Power Supply and LV Power Equipment	12-May-11	15	02-Jun-11	0%	666																																					█																																																											
A2699	Access for E&M Substation installation (02A Haymarket Terrace)	12-May-11	0		0%	703																																					◆ Access for E&M Substation installation (02A Haymarket Terrace)																																																											
336	Civil Engineering and Building Works	03-Jun-11	65	02-Sep-11	0%	601																																					█																																																											
Haymarket Station Tram Stop		02-Jul-08 A	1011	08-Aug-12		372	▬ Haymarket Station Tram Stop												▬ Haymarket Station Tram Stop												▬ Haymarket Station Tram Stop												▬ Haymarket Station Tram Stop												▬ Haymarket Station Tram Stop												▬ Haymarket Station Tram Stop																																			
12350	Issue Construction Drawings		0	02-Jul-08 A	100%																																						◆ Issue Construction Drawings																																																											
135	Civil Engineering and Building Works	31-May-10 A	65	14-Sep-11	3%	434													█												Civil Engineering and Building Works																																																																							
488	Order REC Supply	23-Mar-12	0		0%	467																																					◆ Order REC Supply																																																											
A4678	Access for visual inspection for E&M Tram Stop installation (02A Haymarket Station)	20-Apr-12	0		0%	471																																					◆ Access for visual inspection for E&M Tram Stop installation																																																											
A2480	Deliver and Install Shelter	08-May-12	10	22-May-12	0%	252																																					█																																																											
A4680	Install LV Power Supply and LV Power Equipment	22-May-12	25	26-Jun-12	0%	252																																					█																																																											
A4679	Access for E&M Tram Stop installation (02A Haymarket Station)	22-May-12	0		0%	266																																					◆ Access for E&M Tram Stop installation (02A Haymarket																																																											
A6170	Installation of SIG-interlocking cubicle	05-Jun-12	15	26-Jun-12	0%	291																																					█																																																											
A6180	Commissioning of SIG -interlocking cubicle	26-Jun-12	5	03-Jul-12	0%	291																																					█																																																											
A4690	Install Telecon Equipment	27-Jun-12	20	24-Jul-12	0%	262																																					█																																																											
A4700	Install Station Control Equipment + AFC Equipment	27-Jun-12	25	31-Jul-12	0%	252																																					█																																																											
A4710	Package Test Tramstop	01-Aug-12	5	08-Aug-12	0%	252																																					█																																																											
Trackwork (1135m)		21-Jul-08 A	908	29-Mar-12		342	▬ Trackwork (1135m)												▬ Trackwork (1135m)												▬ Trackwork (1135m)												▬ Trackwork (1135m)												▬ Trackwork (1135m)												▬ Trackwork (1135m)																																			
10350	Delay start for latest SDS design programme		0	21-Jul-08 A	100%																																						◆ Delay start for latest SDS design programme																																																											
10340	Issue Construction Drawings		0	20-Mar-09 A	100%																																						◆ Issue Construction Drawings																																																											
1099	Bulk Excavation - Sub Base	22-Feb-10 A	18	14-Mar-11	10%	0																									█												Bulk Excavation - Sub Base																																																											
1109	OLE Foundations - Drainage	14-Mar-11	23	14-Apr-11	0%	0																																					█																																																											

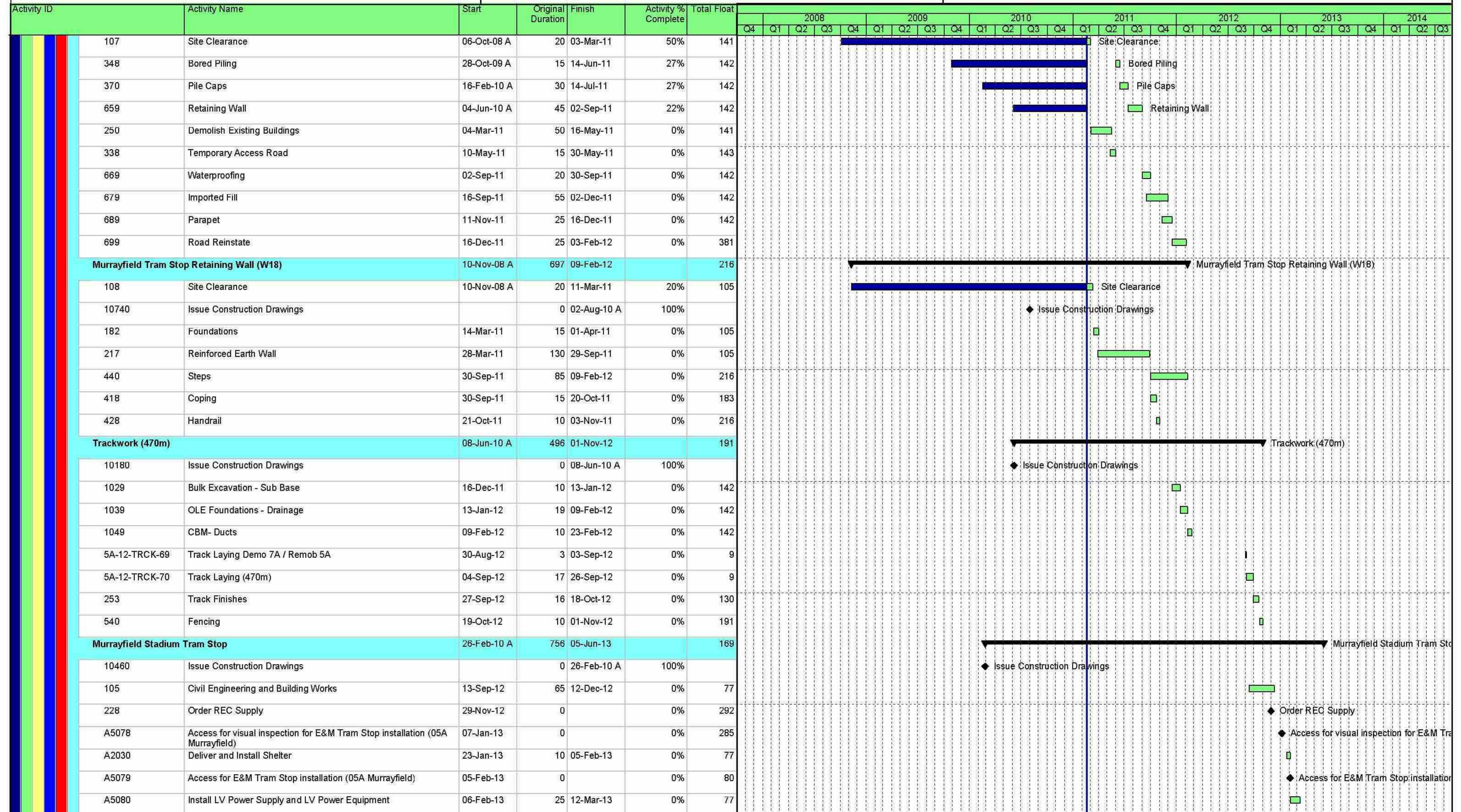
BFB00003289_0224

Date	Revision	Checked	Approved
11-Feb-11	ETN Revision 1 Programme - Progress to 18 Feb 11	JAC	BSC

█ Actual Work █ Remaining Work ◆ Milestone
 █ Critical Remaining Work ▬ Summary

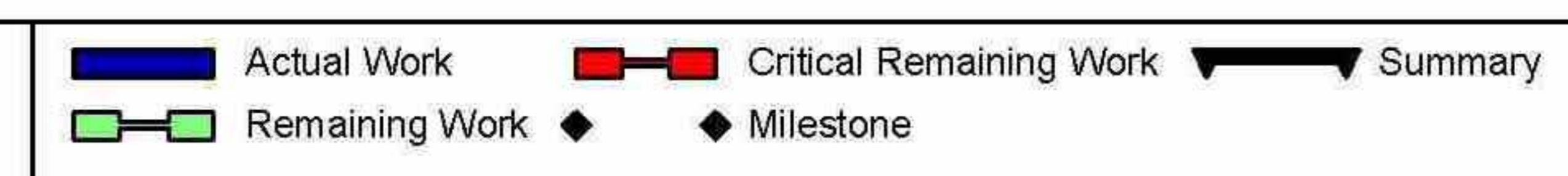
Programme Revision 1
 tracked for V67 Design Programme
 and Progress to 18 February 2011

EDINBURGH TRAM NETWORK



Date	Revision	Checked	Approved
11-Feb-11	ETN Revision 1 Programme - Progress to 18 Feb 11	JAC	BSC

Page 39 of 57
 edintram-9a-55



BFB00003289_0226

