

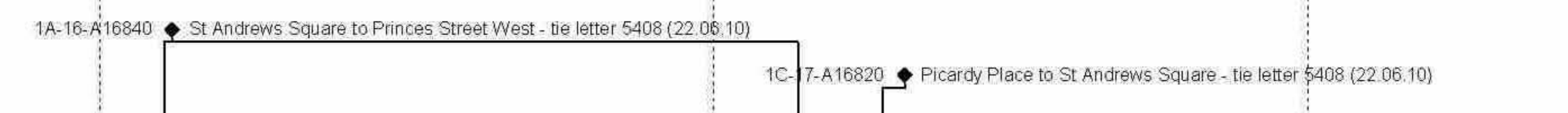
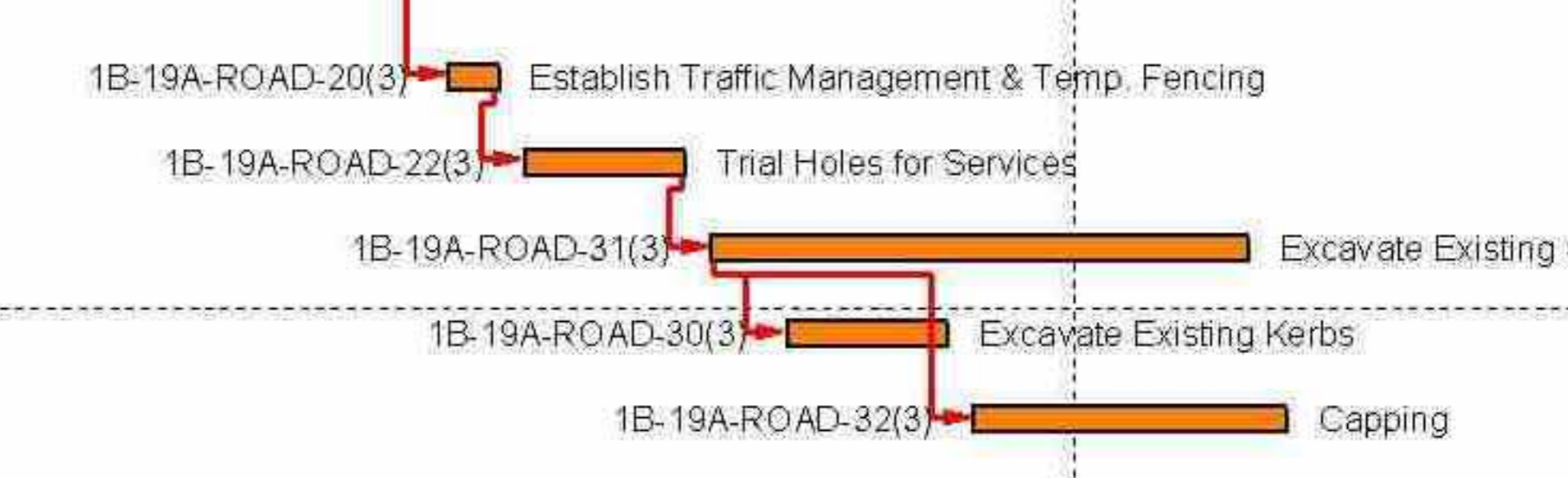
4 Week Look-Ahead Programme

10 July - 06 August 2010 (extended to 01 October 2010)

EDINBURGH TRAM NETWORK



Activity ID	Activity Name	Original Duration	Activity % Complete	Start	Finish	2010				
						Jul	Aug	Sep	Oct	
1A-24-CHGE-160	Agreement of Change (BDDI-IFC) - Trackwork	0	0%	09-Jul-10*	09-Jul-10	60				
1B-19A-ROAD-01(3)	Assumed issue of tie Change Order BDDI to IFC	0	0%	12-Jul-10*		AD 01(3)				
Other Constraints		0		15-Apr-10 A	09-Jul-10					
1A-24-PRMT-40	Permit to Commence (PCW-126) - 1B Ch.900-1,250 and 1C Ch.000-150	0	0%	15-Apr-10 A	09-Jul-10					
Road & Track Works		17		14-Sep-10	06-Oct-10					
Balfour Street Ch 630-920		17		14-Sep-10	06-Oct-10					
Phase 1 Northbound (Leith) Carriageway (Ch 630-920)		17		14-Sep-10	06-Oct-10					
1B-19A-ROAD-20(3)	Establish Traffic Management & Temp. Fencing	2	0%	14-Sep-10	15-Sep-10					
1B-19A-ROAD-22(3)	Trial Holes for Services	3	0%	16-Sep-10	20-Sep-10					
1B-19A-ROAD-31(3)	Excavate Existing Carriageway	11	0%	21-Sep-10	05-Oct-10					
1B-19A-ROAD-30(3)	Excavate Existing Kerbs	3	0%	23-Sep-10	27-Sep-10					
1B-19A-ROAD-32(3)	Capping	7	0%	28-Sep-10	06-Oct-10					
Leith Walk Railway Bridge (S18)		0		09-Jul-10	09-Jul-10					
1B-19-S18-100	Existing Structure	0	0%		09-Jul-10	00				
01C McDonald Road (inc.) to Princess Street West (exc.)		486		10-Mar-09 A	11-Mar-11					
MUDFA & Utility Completions		27		04-Aug-10	10-Sep-10					
1A-16-A16840	St Andrews Square to Princes Street West - tie letter 5408 (22.06.10)	0	0%		04-Aug-10*					
1C-17-A16820	Picardy Place to St Andrews Square - tie letter 5408 (22.06.10)	0	0%		10-Sep-10*					
McDonald Road (inc.) to Picardy Place (exc.)		322		10-Mar-09 A	09-Jul-10					
Design		322		10-Mar-09 A	09-Jul-10					
B01280	Works in Leith Walk suspended until access issues resolved	0	0%	10-Mar-09 A	09-Jul-10					
1C-18-ROAD-20	Issue Construction Drawings - Leith Walk Cable Tunnel Interface	0	0%		09-Jul-10*	20				
1C-18-ROAD-30	Issue Construction Drawings - London Road Shelter	0	0%		09-Jul-10*	30				
Change		0		09-Jul-10	09-Jul-10					
1A-24-CHGE-140	Agreement of Change (BDDI-IFC) - Roadwork	0	0%	09-Jul-10*	09-Jul-10	40				
1A-24-CHGE-170	Agreement of Change (BDDI-IFC) - Trackwork	0	0%	09-Jul-10*	09-Jul-10	70				
Picardy Place (inc.) to St Andrews Square (exc.)		50		09-Jul-10	20-Sep-10					
Design		50		09-Jul-10	20-Sep-10					
1C-3-DSG-ROAD-110	IFC Drawings Picardy Place Change Design 1 New Roundabout	0	0%		09-Jul-10*	10				
1C-3-DSG-ROAD-100	IFC Drawings Roads, St. Lighting, Drainage, OLE, Track, 1C2	0	0%		09-Jul-10*	00				
1C-3-DSG-ROAD-120	IFC Drawings Picardy Place Change Design 1 Widened Footway	0	0%		09-Jul-10*	20				
1C-3-DSG-ROAD-150	IFC Drawings Elder Street Change	0	0%		09-Jul-10*	50				
12220	Issue Construction Drawings - Picardy Place Tramstop	0	0%		09-Jul-10*	20				
12230	Issue Construction Drawings - Roadworks	0	0%		09-Jul-10*	30				
1C-18-ROAD-40	Issue Construction Drawings - Playhouse Interface	0	0%		09-Jul-10*	40				
1C-18-ROAD-50	Issue Construction Drawings - Picardy Place Roundabout Re-Design	0	0%		09-Jul-10*	50				
1C-18-ROAD-60	Issue Construction Drawings - Picardy Place Widened Footway Re-Design	0	0%		09-Jul-10*	60				
12240	Issue Construction Drawings - Cathedral Lane Substation	0	0%		09-Aug-10*					
1C-3-DSG-ROAD-140	IFC Drawings Cathedral Lane Substation incl equipment	0	0%		20-Sep-10*					
Change		0		09-Jul-10	09-Jul-10					
1A-24-CHGE-180	Agreement of Change (BDDI-IFC) - Roadwork	0	0%	09-Jul-10*	09-Jul-10	80				
1A-24-CHGE-190	Agreement of Change (BDDI-IFC) - Trackwork	0	0%	09-Jul-10*	09-Jul-10	90				
St Andrews Square (inc.) to Princes Street West (exc.)		154		09-Jul-10	11-Mar-11					
Change		0		09-Jul-10	09-Jul-10					
1A-24-CHGE-200	Agreement of Change (BDDI-IFC) - Roadwork	0	0%	09-Jul-10*	09-Jul-10	00				



Date	Revision	Checked	Approved
09-Jul-10	Construction Programme Updated V59 & Progress	JAC	

Page 9 of 18

- Actual Work
- Normal
- WBS Summary Activity
- Milestone
- % Complete

"This programme is provided for information and coordination purposes only, and without prejudice to the rights of the Infraco under the Agreement. This programme constitutes a target programme and as such, contains durations that are based on a risk profile not consistent with the Accepted Programme."

BFB00003291_0201

4 Week Look-Ahead Programme

10 July - 06 August 2010 (extended to 01 October 2010)

EDINBURGH TRAM NETWORK



Activity ID	Activity Name	Original Duration	Activity % Complete	Start	Finish	2010				
						Jul	Aug	Sep	Oct	
1A-24-CHGE-210	Agreement of Change (BDDI-IFC) - Trackwork	0	0%	09-Jul-10*	09-Jul-10	10	Agreement of Change (BDDI-IFC) - Trackwork			
Road & Track Works										
North St Andrews Square										
1C-16-TRCK-170	Dummy	100	0%	10-Sep-10	11-Mar-11			1C-16-TRCK-170		
Waverley Junction / South St Andrews St. Ch 370 to 150										
tie Change Order										
1C-16-SAS-160	Assumed issued of tie Change Order BDDI to IFC	0	0%	09-Jul-10*	09-Jul-10	60	Assumed issued of tie Change Order BDDI to IFC			
Traffic Management										
1C-16-SAS-135	Phase 1 - South-North St Andrew St Closed	0	0%	05-Aug-10			1C-16-SAS-135 Phase 1 - South-North St Andrew St Closed			
1C-16-SAS-156	Phase 2 - Bus Traffic to Nearside Westbound Lane	0	0%	05-Aug-10			1C-16-SAS-156 Phase 2 - Bus Traffic to Nearside Westbound Lane			
Phases 1 & 2										
1C-16A-SAS1-252	Erect Pedestrian Barrier	1	0%	06-Sep-10*	06-Sep-10			1C-16A-SAS1-252 Erect Pedestrian Barrier		
1C-16A-SAS1-143	Site Clearance & Site Compound	12	0%	06-Sep-10	21-Sep-10			1C-16A-SAS1-143 Site Clearance & Site Compound		
1C-16A-SAS1-244	Investigate services / outfall positions / inlet-outlet positions / levels	4	0%	07-Sep-10	10-Sep-10			1C-16A-SAS1-244 Investigate services / outfall positions / inlet-outlet positions / levels		
Phase 1 - Inbound SSAS + PS										
1C-16A-SAS1-166	Plane Main Carriageway 250mm	3	0%	07-Sep-10	09-Sep-10			1C-16A-SAS1-166 Plane Main Carriageway 250mm		
1C-16A-SAS1-165	Excavate to Formation for Carriageway and Track (incl for Capping/Type 1)	5	0%	10-Sep-10	16-Sep-10			1C-16A-SAS1-165 Excavate to Formation for Carriageway and Track (incl for Capping		
1C-16A-SAS1-176	Remove existing kerbs to store	5	0%	10-Sep-10	16-Sep-10			1C-16A-SAS1-176 Remove existing kerbs to store		
1C-16A-SAS1-247	Check suitability of formation (ongoing)	0	0%	10-Sep-10				1C-16A-SAS1-247 Check suitability of formation (ongoing)		
1C-16A-SAS1-248	Capping Layer to Adjacent Carriageway (600mm)	5	0%	10-Sep-10	16-Sep-10			1C-16A-SAS1-248 Capping Layer to Adjacent Carriageway (600mm)		
1C-16A-SAS1-154	Core/Cast OLE Pole Foundations	3	0%	17-Sep-10	21-Sep-10			1C-16A-SAS1-154 Core/Cast OLE Pole Foundations		
1C-16A-SAS1-239	Make good Formation with Type 1 (Ave 220mm)	2	0%	17-Sep-10	20-Sep-10			1C-16A-SAS1-239 Make good Formation with Type 1 (Ave 220mm)		
1C-16A-SAS1-370	Installation of IMU Drains and Cable Ducting	2	0%	21-Sep-10	22-Sep-10			1C-16A-SAS1-370 Installation of IMU Drains and Cable Ducting		
1C-16A-SAS1-171	Carry out inspection and testing of Subgrade	1	0%	23-Sep-10	23-Sep-10			1C-16A-SAS1-171 Carry out inspection and testing of Subgrade		
1C-16A-SAS1-172	Blinding Concrete	2	0%	24-Sep-10	27-Sep-10			1C-16A-SAS1-172 Blinding Concrete		
1C-16A-SAS1-163	Place RC Improvement Slab (+ cure lag)	6	0%	28-Sep-10	05-Oct-10			1C-16A-SAS1-163 Place RC Improvem		
Drainage & Ducts										
1C-16A-SAS1-238	Outfall Connections	3	0%	09-Sep-10	13-Sep-10			1C-16A-SAS1-238 Outfall Connections		
1C-16A-SAS1-169	Drainage to Discharge Points	14	0%	13-Sep-10	30-Sep-10			1C-16A-SAS1-169 Drainage to Discharge Points		
1C-16A-SAS1-360	Traction Ducts & Chambers	0	0%	17-Sep-10				1C-16A-SAS1-360 Traction Ducts & Chambers		
1C-16A-SAS1-161	Comms Ducts & Chambers	11	0%	17-Sep-10	01-Oct-10			1C-16A-SAS1-161 Comms Ducts & Chambers		
Carriageway Construction										
1C-16A-SAS1-178	Sub-base 220mm all carriageway areas (bituminous and setts)	3	0%	17-Sep-10	21-Sep-10			1C-16A-SAS1-178 Sub-base 220mm all carriageway areas (bituminous a		
01D Princes Street (inc.) to Haymarket (exc.)										
MUDFA & Utility Completions										
1D-14-1065	Utility completion Haymarket Junction - tie letter 5408 (22.06.10)	0	0%	09-Aug-10	09-Aug-10			1D-14-1065 Utility completion Haymarket Junction - tie letter 5408 (22.06.10)		
Design										
397	Track Alignment Revision (Section 1D SDS V41) from RSA	0	0%	09-Jul-10*	09-Jul-10	97	Track Alignment Revision (Section 1D SDS V41) from RSA			
Change										
1A-24-CHGE-220	Agreement of Change (BDDI-IFC) - Trackwork	0	0%	09-Jul-10*	09-Jul-10	20	Agreement of Change (BDDI-IFC) - Trackwork			
1A-24-CHGE-230	Agreement of Change (BDDI-IFC) - Roadwork	0	0%	09-Jul-10*	09-Jul-10	30	Agreement of Change (BDDI-IFC) - Roadwork			
Other Constraints										
1A-24-PRMT-50	Permit to Commence (PCW-103) - Haymarket to Shandwick Place ETN Construction	0	0%	05-Jan-10 A	09-Jul-10			Permit to Commence (PCW-103) - Haymarket to Shandwick Place ETN Construction		
1A-24-PRMT-60	Permit to Commence (PCW-123) - Shandwick Place TM Enabling Works	0	0%	01-Apr-10 A	09-Jul-10			Permit to Commence (PCW-123) - Shandwick Place TM Enabling Works		
1A-24-PRMT-70	Permit to Commence (PCW-124) - Shandwick Place ETN Construction	0	0%	01-Apr-10 A	09-Jul-10			Permit to Commence (PCW-124) - Shandwick Place ETN Construction		

Date	Revision	Checked	Approved
09-Jul-10	Construction Programme Updated V59 & Progress	JAC	

■ Actual Work ■ % Complete
■ Normal ■ WBS Summary Activity
◆ Milestone

"This programme is provided for information and coordination purposes only, and without prejudice to the rights of the Infraco under the Agreement. This programme constitutes a target programme and as such, contains durations that are based on a risk profile not consistent with the Accepted Programme."

BFB00003291_0202

4 Week Look-Ahead Programme

10 July - 06 August 2010 (extended to 01 October 2010)

EDINBURGH TRAM NETWORK



Activity ID	Activity Name	Original Duration	Activity % Complete	Start	Finish	2010			
						Jul	Aug	Sep	Oct
Princes St - Section 1C (Waverley Bridge) to Section 1D (Lothian Road)									
A20880	Outstanding Works (Finishes)	20	89%	30-Nov-09 A	13-Jul-10	[Bar chart showing progress from July to August]			
A20890	Scottish Water	20	85%	30-Apr-10 A	13-Jul-10	[Bar chart showing progress from July to August]			
Haymarket Junction / Shandwick Place (Section 1D Ch.130,380 to 2A Ch.200,030)									
Traffic Management									
1D-15-1016	Enabling Works - Shandwick Place	19	0%	16-Jul-10*	15-Sep-10	[Bar chart showing start in July and end in September]			
1D-14-1055	Enabling Works - Haymarket Junction	7	0%	06-Sep-10*	14-Sep-10	[Bar chart showing start in September]			
1D-14-H1-928	TM Phase H1 - (Main Area - Eastbound Side)	2	0%	13-Sep-10	14-Sep-10	[Bar chart showing start in September]			
1D-15-SP1-935	TM Phase Ch.130,960 - 130,380 (Palmerston Place - Princes Street)	2	0%	16-Sep-10	17-Sep-10	[Bar chart showing start in September]			
Phases SP1,2,3,4,5,6,7. Ch.130,960 - 130,380 (Palmerston Place - Princes Street)									
Section Wide									
1D-14/15-489	Erect Pedestrian Barrier	5	0%	20-Sep-10	24-Sep-10	[Bar chart showing start in September]			
1D-14/15-730	Protect Dwarf Walls (Listed Monuments)	0	0%	27-Sep-10		[Bar chart showing start in September]			
1D-14/15-501	Tree Removal	4	0%	27-Sep-10	30-Sep-10	[Bar chart showing start in September]			
1D-14/15-502	Site Clearance & Site Compound	20	0%	27-Sep-10	22-Oct-10	[Bar chart showing start in September]			
1D-14/15-493	Investigate services / outfall positions / inlet-outlet positions / levels	4	0%	27-Sep-10	30-Sep-10	[Bar chart showing start in September]			
Phase SP1 - Inbound Ch.130,670 - 130,380 (Crescents to Princes Street)									
Drainage & Ducts									
1D-140-SP1-487	Outfall Connections	5	0%	29-Sep-10	05-Oct-10	[Bar chart showing start in September]			
Haymarket Ch.131,250 - 131,050									
Phase H1 - Main Area - Eastbound Side									
1D-14CD-H1-661	Erect Pedestrian Barrier	2	0%	15-Sep-10	16-Sep-10	[Bar chart showing start in September]			
1D-14CD-H1-662	Site Clearance & Site Compound	5	0%	16-Sep-10	22-Sep-10	[Bar chart showing start in September]			
1D-14CD-H1-663	Plane Main Carriageway Area - south of access lane over voids	2	0%	17-Sep-10	20-Sep-10	[Bar chart showing start in September]			
1D-14CD-H1-880	Core/Cast OLE Pole Foundations	7	0%	21-Sep-10	29-Sep-10	[Bar chart showing start in September]			
Expose and Infil Underground Chambers (ref TIE plan of 19 June 09)									
1D-14CD-H1-675	Expose concrete roof slabs / remove / fence	5	0%	21-Sep-10	27-Sep-10	[Bar chart showing start in September]			
1D-14CD-H1-656	Remove Roof Support Steelwork	5	0%	28-Sep-10	04-Oct-10	[Bar chart showing start in September]			
Drainage & Ducts									
1D-14CD-H1-603	Investigate services / outfall positions / inlet-outlet positions / levels	2	0%	17-Sep-10	20-Sep-10	[Bar chart showing start in September]			
1D-14CD-H1-674	Outfall Connections	6	0%	20-Sep-10	27-Sep-10	[Bar chart showing start in September]			
Princes Street West Tram Stop									
721	Tramstop Platform incl related cubicle foundations	20	0%	09-Jul-10*	09-Sep-10	[Bar chart showing start in July and end in September]			
SECTION 2 HAYMARKET CORRIDOR									
Opening Sequence A (Airport to Haymarket)									
02A Haymarket Corridor									
Design									
2A-13-TRCK-10	Issue Construction Drawings - Track Model 2A	0	0%	09-Jul-10*	09-Jul-10	[Milestone in July]			
2A-13-TRCK-20	Issue Construction Drawings - S19 Trackform	0	0%	09-Jul-10*	09-Jul-10	[Milestone in July]			
Change									
A20810	Agreement of Change (BDDI-IFC) - S19	0	0%	09-Jul-10	09-Jul-10*	[Milestone in July]			
1A-24-CHGE-240	Agreement of Change (BDDI-IFC) - Trackwork	0	0%	09-Jul-10*	09-Jul-10	[Milestone in July]			
Other Constraints									
2A-13-TRCK-01(3)	Assumed issue of tie Change Order (soft ground)	0	0%	09-Jul-10*	09-Jul-10	[Milestone in July]			
Haymarket (inc.) to Roseburn Junction (inc.)									

Date	Revision	Checked	Approved
09-Jul-10	Construction Programme Updated V59 & Progress	JAC	

█ Actual Work █ % Complete
█ Normal █ WBS Summary Activity
◆ Milestone ◆ Milestone

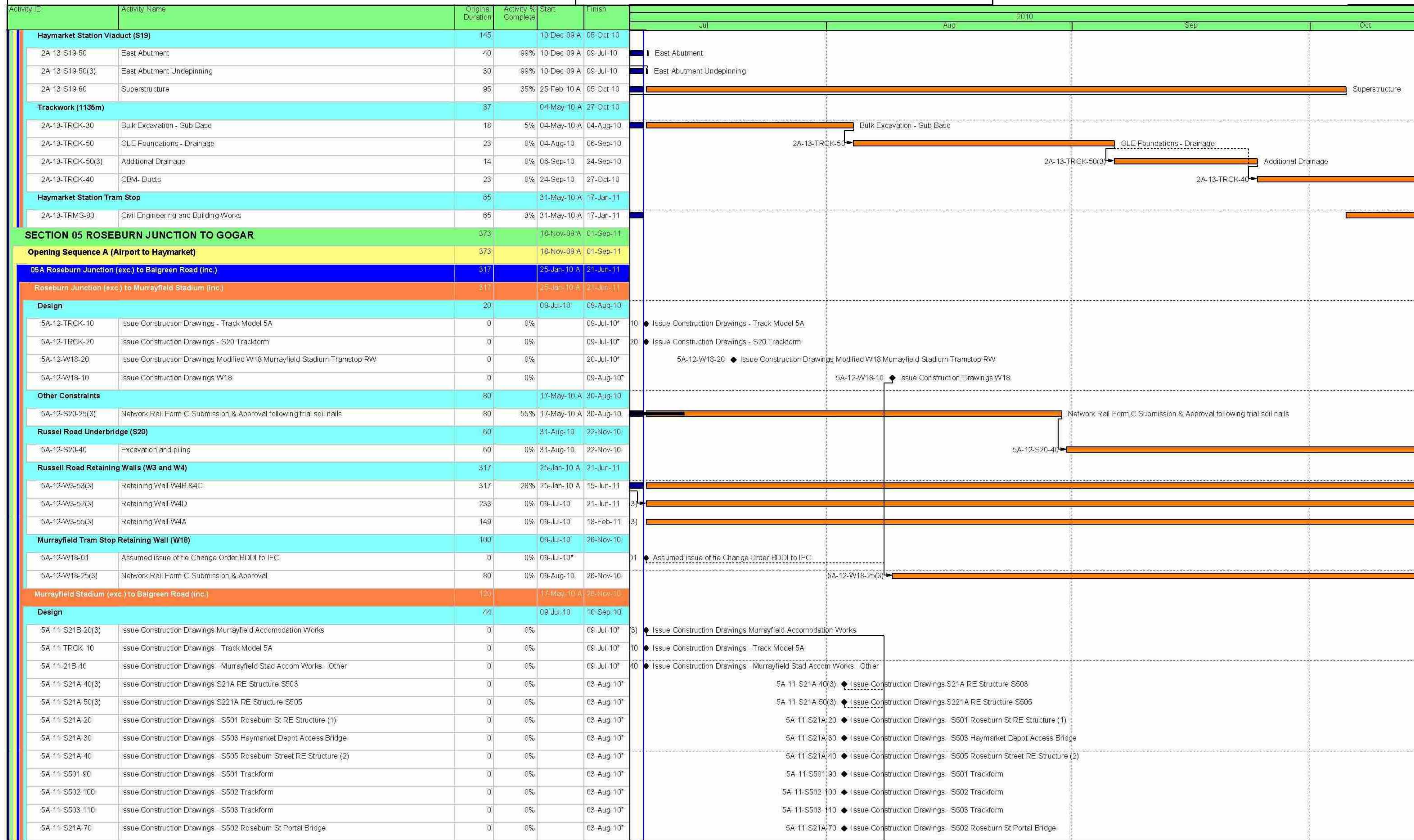
"This programme is provided for information and coordination purposes only, and without prejudice to the rights of the Infraco under the Agreement. This programme constitutes a target programme and as such, contains durations that are based on a risk profile not consistent with the Accepted Programme."

BFB00003291_0203

4 Week Look-Ahead Programme

10 July - 06 August 2010 (extended to 01 October 2010)

EDINBURGH TRAM NETWORK



Date	Revision	Checked	Approved
09-Jul-10	Construction Programme Updated V59 & Progress	JAC	

█ Actual Work █ % Complete
█ Normal █ WBS Summary Activity
◆ Milestone ◆ Milestone

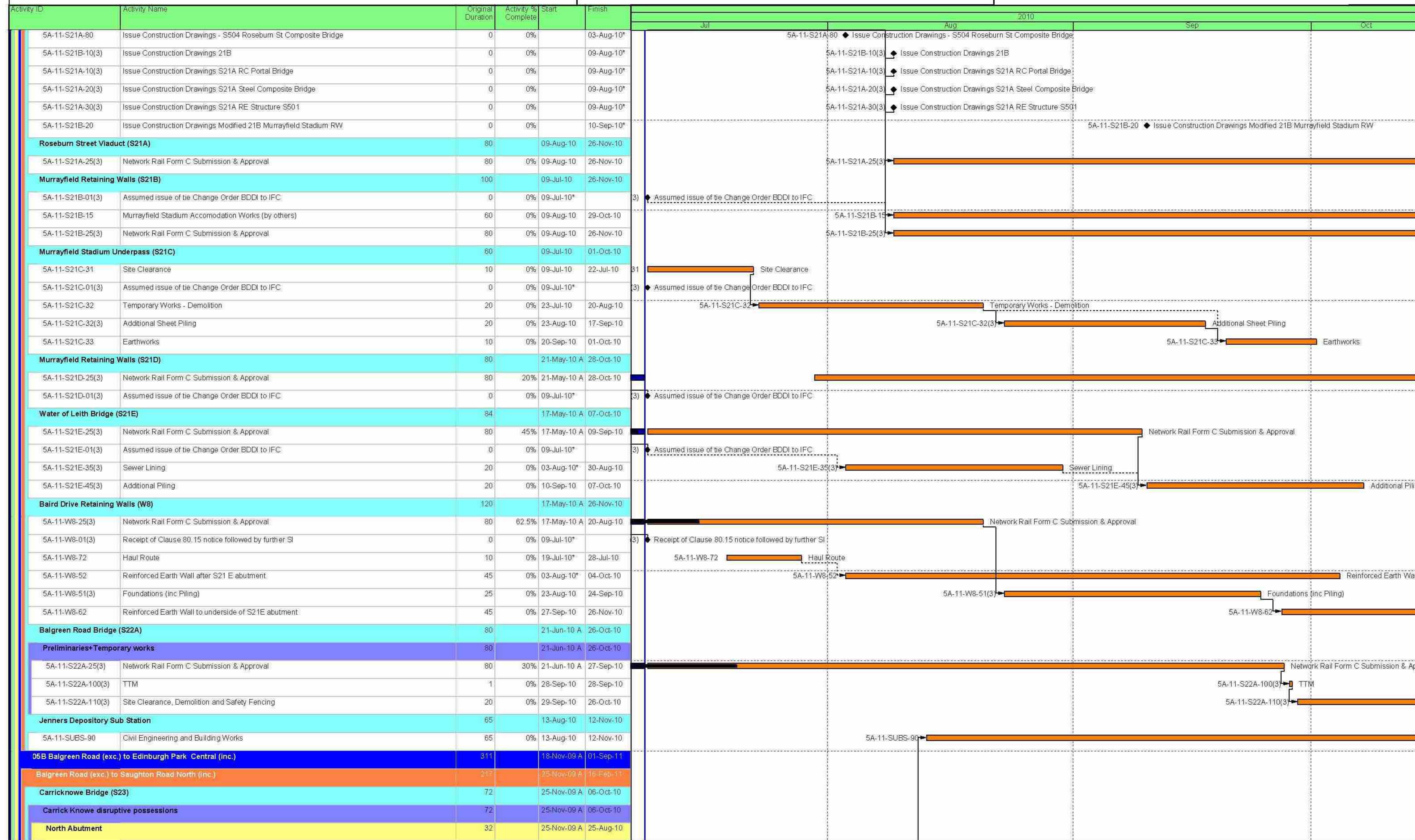
"This programme is provided for information and coordination purposes only, and without prejudice to the rights of the Infraco under the Agreement. This programme constitutes a target programme and as such, contains durations that are based on a risk profile not consistent with the Accepted Programme."

BFB00003291_0204

4 Week Look-Ahead Programme

10 July - 06 August 2010 (extended to 01 October 2010)

EDINBURGH TRAM NETWORK



Date	Revision	Checked	Approved
09-Jul-10	Construction Programme Updated V59 & Progress	JAC	

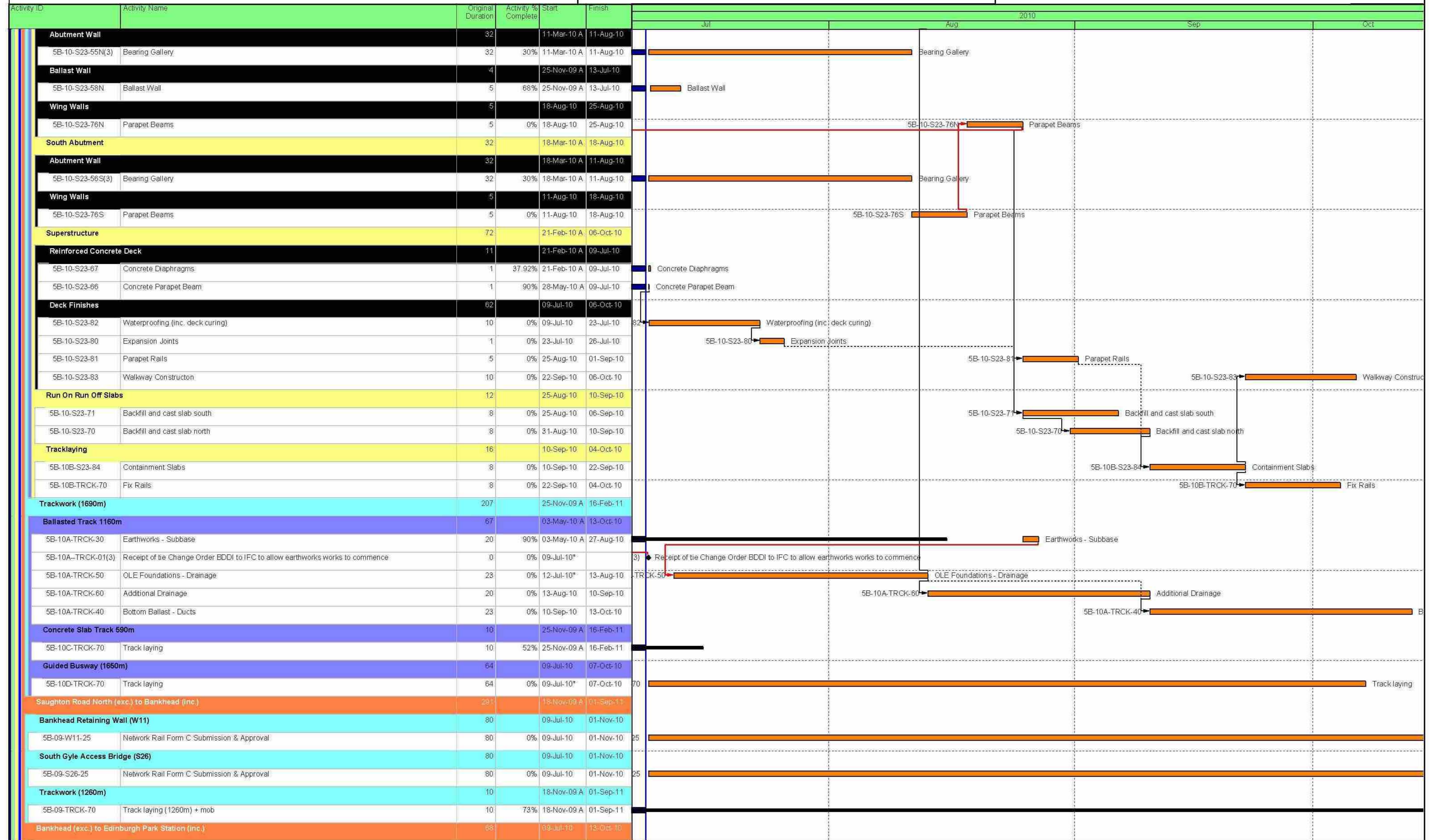
█ Actual Work █ % Complete
█ Normal █ WBS Summary Activity
◆ Milestone

"This programme is provided for information and coordination purposes only; and without prejudice to the rights of the Infraco under the Agreement. This programme constitutes a target programme and as such, contains durations that are based on a risk profile not consistent with the Accepted Programme."

BFB00003291_0205

4 Week Look-Ahead Programme
10 July - 06 August 2010 (extended to 01 October 2010)

EDINBURGH TRAM NETWORK



Date	Revision	Checked	Approved
09-Jul-10	Construction Programme Updated V59 & Progress	JAC	

█ Actual Work █ % Complete
█ Normal █ WBS Summary Activity
◆ Milestone ◆ Milestone

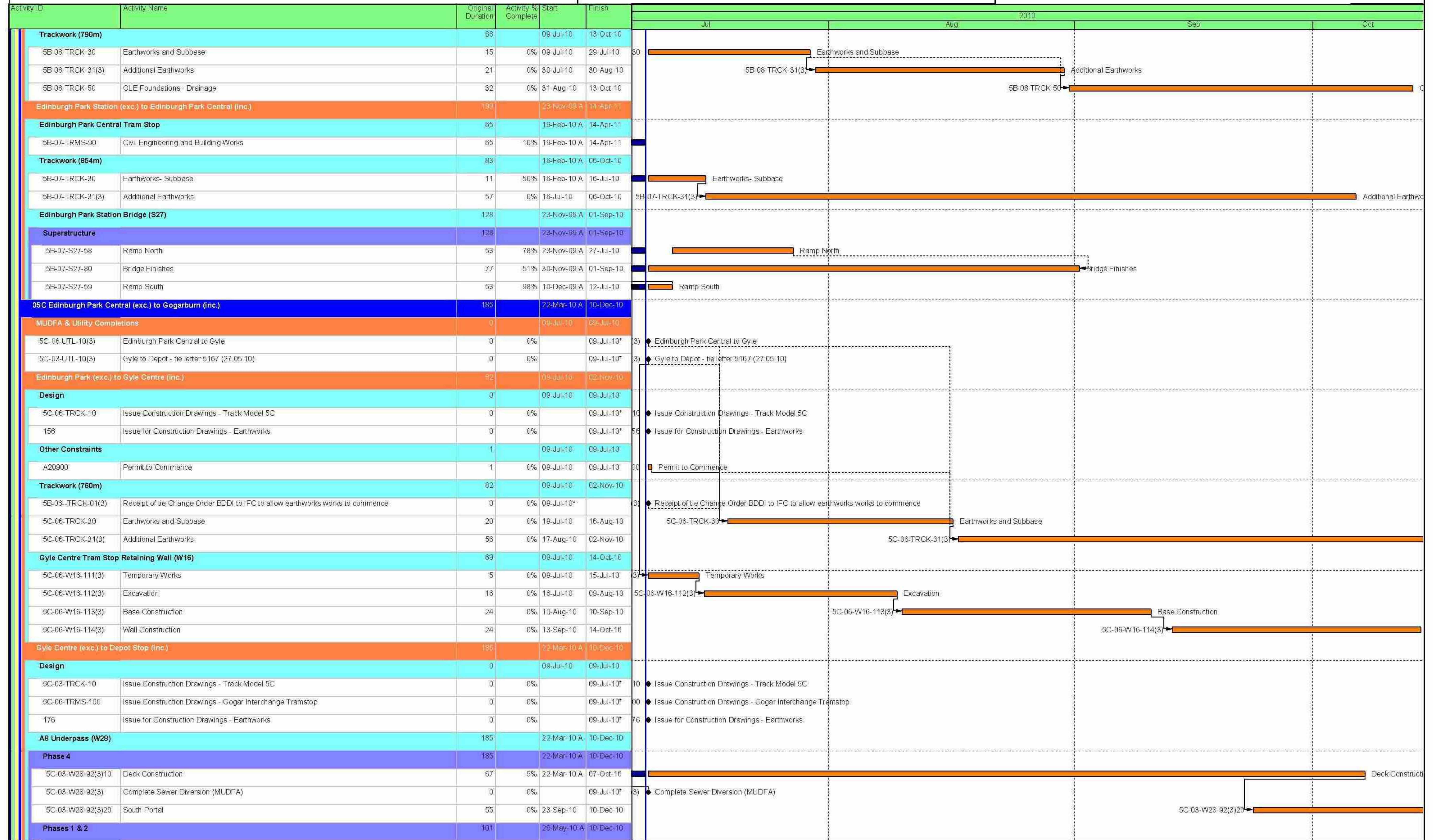
"This programme is provided for information and coordination purposes only, and without prejudice to the rights of the Infraco under the Agreement. This programme constitutes a target programme and as such, contains durations that are based on a risk profile not consistent with the Accepted Programme."

BFB00003291_0206

4 Week Look-Ahead Programme

10 July - 06 August 2010 (extended to 01 October 2010)

EDINBURGH TRAM NETWORK



Date	Revision	Checked	Approved
09-Jul-10	Construction Programme Updated V59 & Progress	JAC	

█ Actual Work █ % Complete
█ Normal █ WBS Summary Activity
◆ Milestone

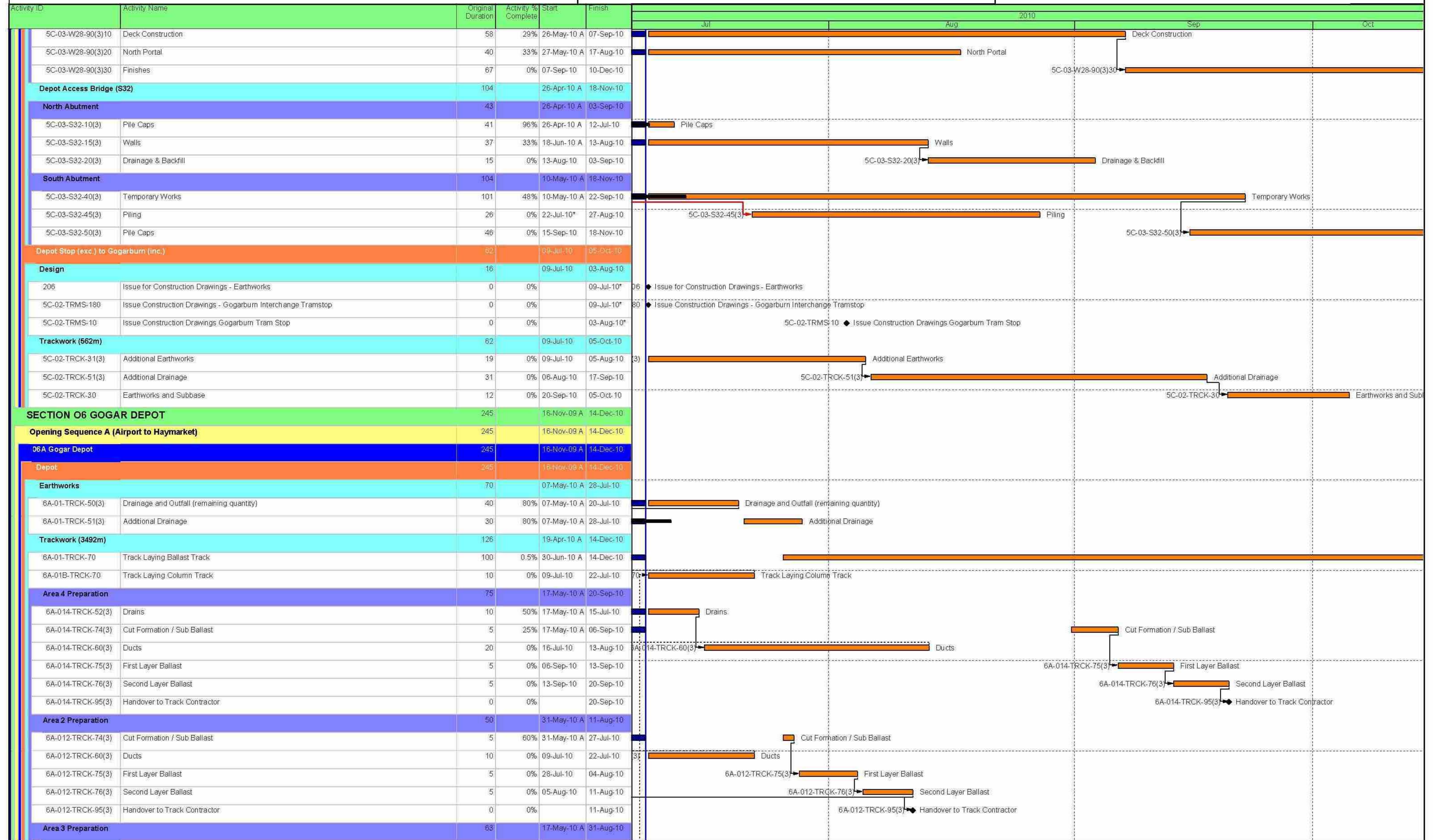
"This programme is provided for information and coordination purposes only, and without prejudice to the rights of the Infraco under the Agreement. This programme constitutes a target programme and as such, contains durations that are based on a risk profile not consistent with the Accepted Programme."

BFB00003291_0207

4 Week Look-Ahead Programme

10 July - 06 August 2010 (extended to 01 October 2010)

EDINBURGH TRAM NETWORK



Date	Revision	Checked	Approved
09-Jul-10	Construction Programme Updated V59 & Progress	JAC	

█ Actual Work █ Normal █ WBS Summary Activity
█ % Complete
◆ Milestone

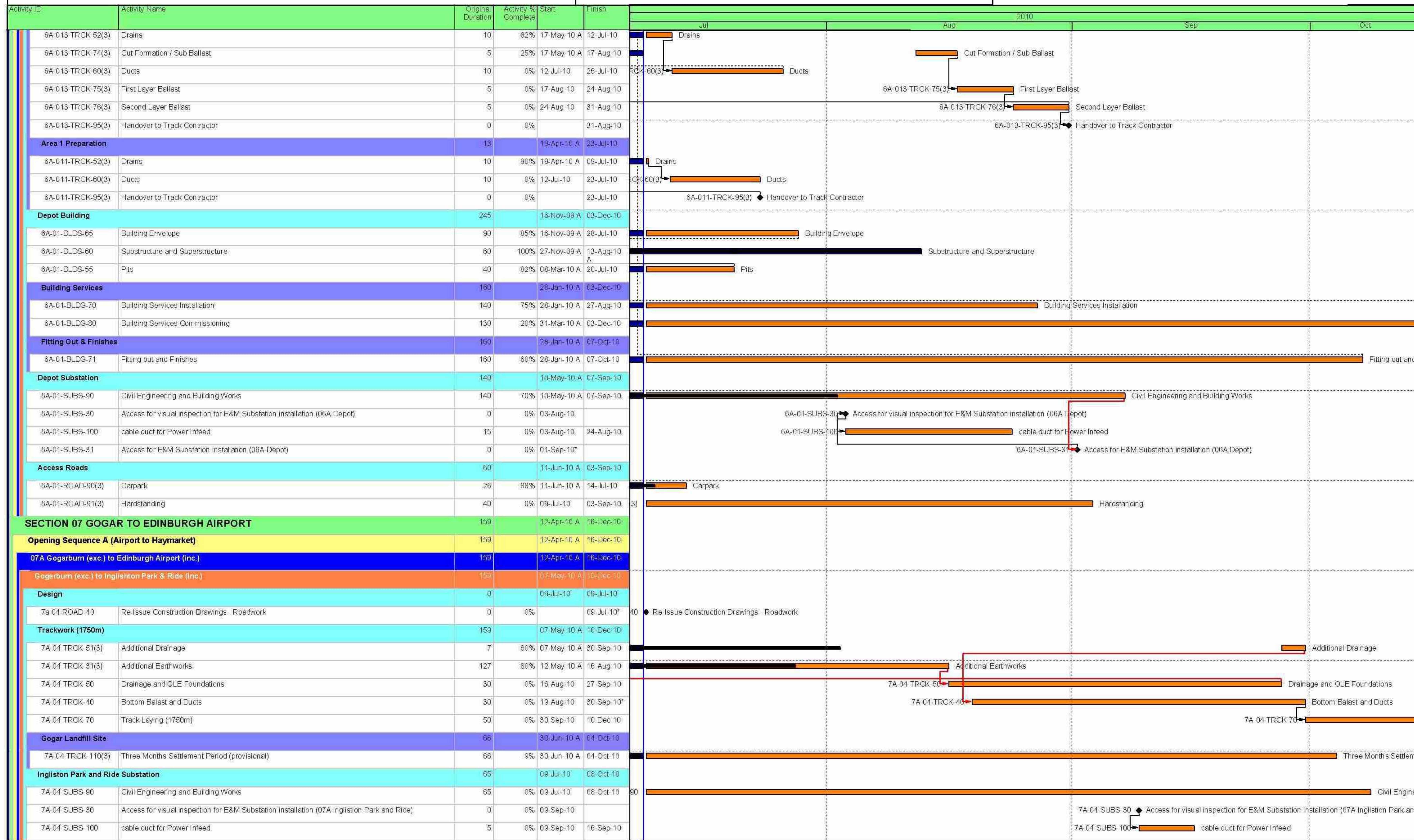
"This programme is provided for information and coordination purposes only, and without prejudice to the rights of the Infraco under the Agreement. This programme constitutes a target programme and as such, contains durations that are based on a risk profile not consistent with the Accepted Programme."

BFB00003291_0208

4 Week Look-Ahead Programme

10 July - 06 August 2010 (extended to 01 October 2010)

EDINBURGH TRAM NETWORK



Date	Revision	Checked	Approved
09-Jul-10	Construction Programme Updated V59 & Progress	JAC	

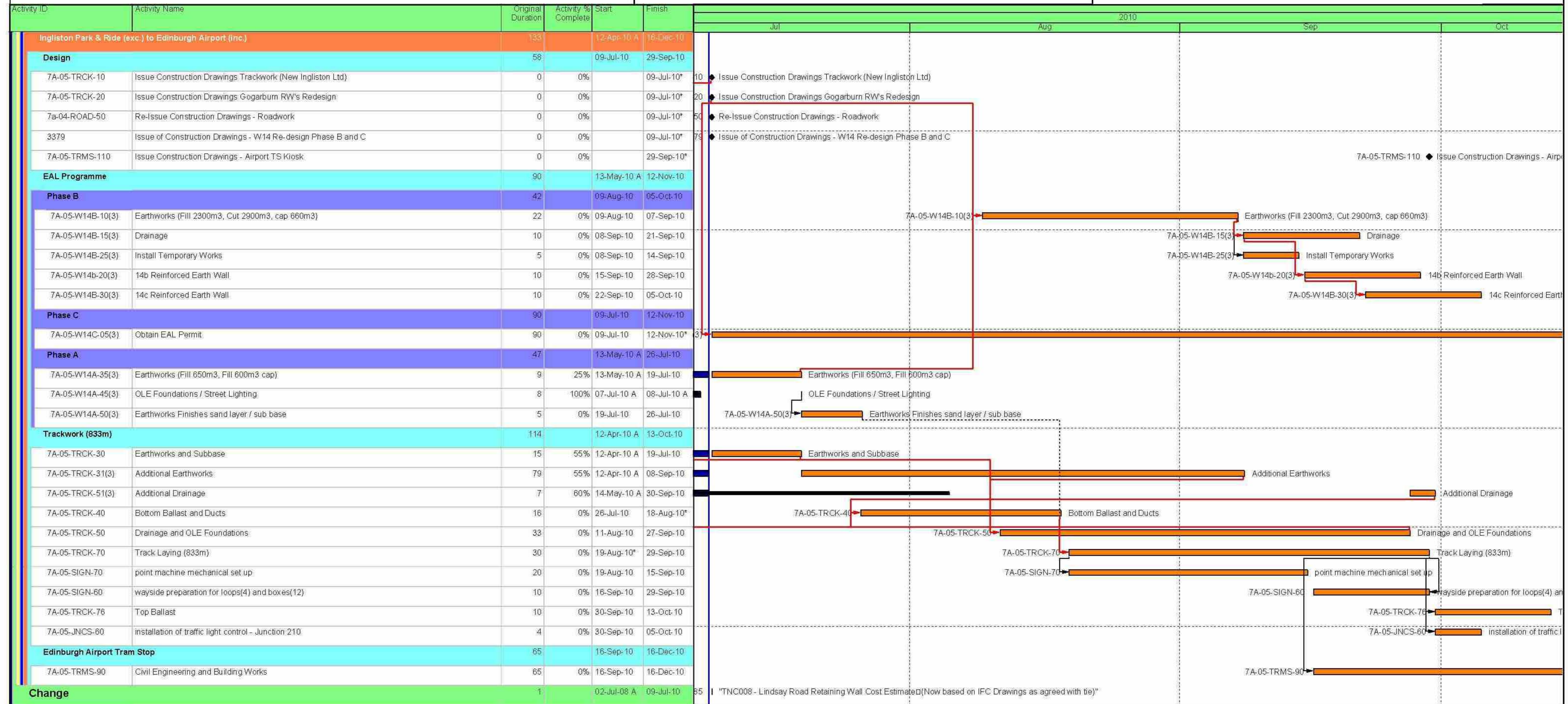
█ Actual Work █ % Complete
█ Normal █ WBS Summary Activity
◆ Milestone ◆ Milestone

"This programme is provided for information and coordination purposes only, and without prejudice to the rights of the Infraco under the Agreement. This programme constitutes a target programme and as such, contains durations that are based on a risk profile not consistent with the Accepted Programme."

BFB00003291_0209

4 Week Look-Ahead Programme
10 July - 06 August 2010 (extended to 01 October 2010)

EDINBURGH TRAM NETWORK



Date	Revision	Checked	Approved
09-Jul-10	Construction Programme Updated V59 & Progress	JAC	

- Actual Work
- Normal
- WBS Summary Activity
- Milestone
- % Complete

"This programme is provided for information and coordination purposes only; and without prejudice to the rights of the Infraco under the Agreement. This programme constitutes a target programme and as such, contains durations that are based on a risk profile not consistent with the Accepted Programme."

BFB00003291_0210

10.4 Tram Programme

INFORME DE AVANCE DE FABRICACIÓN MANUFACTURING STATUS "EDINBURGH TRAM"

1.- NAVE DE PRUEBAS / TESTING AREA



INFORME DE AVANCE DE FABRICACIÓN MANUFACTURING STATUS "EDINBURGH TRAM"

2.- ACABADO / FINISHING AREA



INFORME DE AVANCE DE FABRICACIÓN
MANUFACTURING STATUS
"EDINBURGH TRAM"



INFORME DE AVANCE DE FABRICACIÓN
MANUFACTURING STATUS
“EDINBURGH TRAM”

UNIT	STATUS
A-1	FATT issued
B-1	FATT issued
C-1	FATT issued
F-1	FATT issued
G-1	FATT issued
D-1	FATT issued
E-1	FATT issued

UNIT	STATUS
A-2	Delivered at Princes Street. FART issued
B-2	Delivered at Princes Street. FART issued
C-2	Delivered at Princes Street. FART issued
F-2	Delivered at Princes Street. FART issued
G-2	Delivered at Princes Street. FART issued
D-2	Delivered at Princes Street. FART issued
E-2	Delivered at Princes Street. FART issued

UNIT	STATUS
A-3	Ready for Transport, FART issued
B-3	Ready for Transport, FART issued
C-3	Ready for Transport, FART issued
F-3	Ready for Transport, FART issued
G-3	Ready for Transport, FART issued
D-3	Ready for Transport, FART issued
E-3	Ready for Transport, FART issued

UNIT	STATUS
A-4	Ready for Transport, FART issued
B-4	Ready for Transport, FART issued
C-4	Ready for Transport, FART issued
F-4	Ready for Transport, FART issued
G-4	Ready for Transport, FART issued
D-4	Ready for Transport, FART issued
E-4	Ready for Transport, FART issued

UNIT	STATUS
A-5	Ready for Transport, FART issued
B-5	Ready for Transport, FART issued
C-5	Ready for Transport, FART issued
F-5	Ready for Transport, FART issued
G-5	Ready for Transport, FART issued
D-5	Ready for Transport, FART issued
E-5	Ready for Transport, FART issued

**INFORME DE AVANCE DE FABRICACIÓN
MANUFACTURING STATUS
"EDINBURGH TRAM"**

UNIT	STATUS
A-6	Ready for Transport, FART issued
B-6	Ready for Transport, FART issued
C-6	Ready for Transport, FART issued
F-6	Ready for Transport, FART issued
G-6	Ready for Transport, FART issued
D-6	Ready for Transport, FART issued
E-6	Ready for Transport, FART issued

UNIT	STATUS
A-7	Ready for Transport, FART issued
B-7	Ready for Transport, FART issued
C-7	Ready for Transport, FART issued
F-7	Ready for Transport, FART issued
G-7	Ready for Transport, FART issued
D-7	Ready for Transport, FART issued
E-7	Ready for Transport, FART issued

UNIT	STATUS
A-8	Ready for Transport, FART issued
B-8	Ready for Transport, FART issued
C-8	Ready for Transport, FART issued
F-8	Ready for Transport, FART issued
G-8	Ready for Transport, FART issued
D-8	Ready for Transport, FART issued
E-8	Ready for Transport, FART issued

UNIT	STATUS
A-9	Ready for Transport, FART issued
B-9	Ready for Transport, FART issued
C-9	Ready for Transport, FART issued
F-9	Ready for Transport, FART issued
G-9	Ready for Transport, FART issued
D-9	Ready for Transport, FART issued
E-9	Ready for Transport, FART issued

INFORME DE AVANCE DE FABRICACIÓN
MANUFACTURING STATUS
"EDINBURGH TRAM"

UNIT	STATUS
A-10	Ready for Transport, tram inspected, FART will be issued
B-10	Ready for Transport, tram inspected, FART will be issued
C-10	Ready for Transport, tram inspected, FART will be issued
F-10	Ready for Transport, tram inspected, FART will be issued
G-10	Ready for Transport, tram inspected, FART will be issued
D-10	Ready for Transport, tram inspected, FART will be issued
E-10	Ready for Transport, tram inspected, FART will be issued

UNIT	STATUS
A-11	Factory tests
B-11	Factory tests
C-11	Factory tests
F-11	Factory tests
G-11	Factory tests
D-11	Factory tests
E-11	Factory tests

UNIT	STATUS
A-12	Factory tests
B-12	Factory tests
C-12	Factory tests
F-12	Factory tests
G-12	Factory tests
D-12	Factory tests
E-12	Factory tests

UNIT	STATUS
A-13	Coupling
B-13	Coupling
C-13	Coupling
F-13	Coupling
G-13	Coupling
D-13	Coupling
E-13	Coupling

**INFORME DE AVANCE DE FABRICACIÓN
MANUFACTURING STATUS
"EDINBURGH TRAM"**

UNIT	STATUS
A-14	Finishing process.
B-14	Finishing process.
C-14	Finishing process.
F-14	Finishing process.
G-14	Finishing process.
D-14	Finishing process.
E-14	Finishing process.

UNIT	STATUS
A-15	Finishing process.
B-15	Finishing process.
C-15	Finishing process.
F-15	Finishing process.
G-15	Finishing process.
D-15	Finishing process.
E-15	Finishing process.

UNIT	STATUS
A-16	Finishing process.
B-16	Finishing process.
C-16	Finishing process.
F-16	Finishing process.
G-16	Finishing process.
D-16	Finishing process.
E-16	Finishing process.

UNIT	STATUS
A-17	Finishing process.
B-17	Finishing process.
C-17	Finishing process.
F-17	Finishing process.
G-17	Finishing process.
D-17	Finishing process.
E-17	Finishing process.

UNIT	STATUS
A-18	Finishing process.
B-18	Painted.
C-18	Finishing process.
F-18	Painted.
G-18	Finishing process.
D-18	Painted.
E-18	Finishing process.

**INFORME DE AVANCE DE FABRICACIÓN
MANUFACTURING STATUS
"EDINBURGH TRAM"**

UNIT	STATUS
A-19	Painted.
B-19	Painted.
C-19	Finishing process.
F-19	Painted.
G-19	Finishing process.
D-19	Painted.
E-19	Painted.

UNIT	STATUS
A-20	Painted.
B-20	Painted.
C-20	Finishing process.
F-20	Painted.
G-20	Finishing process.
D-20	Painted.
E-20	Painted.

UNIT	STATUS
A-21	Painted
B-21	Painted
C-21	Painted
F-21	Painted
G-21	Painted
D-21	Painted
E-21	Painting process

UNIT	STATUS
A-22	Painting process
B-22	Painted
C-22	Painted
F-22	Painting process
G-22	Painted
D-22	Painting process
E-22	Painting process

UNIT	STATUS
A-23	Painting process
B-23	Painting process
C-23	Painting process
F-23	Painting process
G-23	Painting process
D-23	Painting process
E-23	Painting process

**INFORME DE AVANCE DE FABRICACIÓN
MANUFACTURING STATUS
"EDINBURGH TRAM"**

UNIT	STATUS
A-24	Painting process
B-24	Painting process
C-24	Painting process
F-24	Painting process
G-24	Painting process
D-24	Painting process
E-24	Painting process

UNIT	STATUS
A-25	Painting process
B-25	Painting process
C-25	Painting process
F-25	Painting process
G-25	Painting process
D-25	Painting process
E-25	Painting process

UNIT	STATUS
A-26	Bodyshell assembly finished. To begin the process of painting
B-26	Bodyshell assembly finished. To begin the process of painting
C-26	Bodyshell assembly finished. To begin the process of painting
F-26	Bodyshell assembly finished. To begin the process of painting
G-26	Bodyshell assembly finished. To begin the process of painting
D-26	Bodyshell assembly finished. To begin the process of painting
E-26	Bodyshell assembly finished. To begin the process of painting

UNIT	STATUS
A-27	Bodyshell assembly finished. To begin the process of painting
B-27	Bodyshell assembly finished. To begin the process of painting
C-27	Bodyshell assembly finished. To begin the process of painting
F-27	Bodyshell assembly finished. To begin the process of painting
G-27	Bodyshell assembly finished. To begin the process of painting
D-27	Bodyshell assembly finished. To begin the process of painting
E-27	Bodyshell assembly finished. To begin the process of painting

Signed: Idoia Garmendia
CAF Q.A.

10.5 RFI Register

Civil Process Register

Company Bilfinger Berger Civil
Channel ETN (<http://etn.mybiw.com>)



Status	System Ref	WorkPackage Ref	Publishing Company	Title	Content	Publishing User	Issued Date
Open	RFI-00265		Bilfinger Berger Civil	Advance Works by EARL	The Site Clearance Appendix (App 2 - Ref: ULE90130-SW-SPN-00090 V36) states for certain items with	Simon Nesbitt	01/03/2010
Open	RFI-00267		Bilfinger Berger Civil	PID Infrastructure Requirements	Section 35.4.1 of the Employers Requirements notes that Passenger Information Displays shall also be	Stefan Rotthaus	20/04/2010
Open	RFI-00268		Bilfinger Berger Civil	S19 - Remediation of Soft Ground	Please find attached our TQ1550 regarding soft ground encountered at S19 retaining wall base excavat	Brian Walker	21/04/2010
Open	RFI-00269		Bilfinger Berger Civil	Traffic island to Ch130+280 (South Charlotte St./Princes St.)	Traffic island to Ch130+280 (South Charlotte St./Princes St.)has to be installed. This island had been removed by MUDFA before BSC mobilised to site January/February 2009. Could tie please provide the setting-out information and existing kerbs etc. to enable us to re-construct the splitter island.	Crawford,Iain	20/05/2010
Open	RFI-00270		Bilfinger Berger Civil	Area reinstatement outside Frasers from Lothian Road to Hope St. Lane.	Area reinstatement outside Frasers from Lothian Road to Hope St. Lane. Ch130+400 to Ch130+435 The area shown in red on the attached drawing had been removed by MUDFA before BSC mobilised to site January/February 2009. Could tie please provide the setting-out information and existing kerbs/slabs, materials etc. to enable us to re-construct the area.	Crawford,Iain	20/05/2010
Open	RFI-00271		Bilfinger Berger Civil	ULE90130-SW-DRG-00703 not on BIW	ULE90130-01-HRL-00007(IFC rev 8) refers to "existing statue to be relocates" see drawing nr ULE90130-SW-DRG-00703. This drawing is not available on BIW. Could the designer please make this drawing available.	Crawford,Iain	31/05/2010
Open	RFI-00272		Bilfinger Berger Civil	Existing and Missing Section 1B Drainage Gullies	A takeoff has been conducted on the existing condition of the drainage gullies in Section 1B following what appears to be the completion of MUDFA works. It was found that:...	Goding,John	01/06/2010
Need further clarification	RFI-00273		Bilfinger Berger Civil	Haymarket viaduct	There is an existing 50mm steel Pipe protruding into the space at the location of W21 wall along Haymarket Terrace See attached RFI-GC-163-AP1 Please confirm that this pipe can be removed.It looks like an old gas service pipe.	Hume,Wallace	08/06/2010
Open	RFI-00274		Bilfinger Berger Civil	Haymarket viaduct	Live Power Service in footpath at Haymarket Terrace Service ducts belonging to Scottish Power have been discovered along the footpath at Haymarket Terrace within the proposed Tram Track Slab excavation (See attached RFI-GC-170-AP1) and have been confirmed by SP at housing Live cables. Scottish Power have stated they need a continuous duct way however and for reference these ducts are in poor condition and in many instances are blocked/ broken/ not continuous. Please confirm when these ducts will be replaced and when they will be removed from the earthworks outline.	Hume,Wallace	13/06/2010
Open	RFI-00275		Bilfinger Berger Civil	Section 1A - Manholes within the base of Retaining Wall 1A (Lindsay Road Retaining Wall)	Could tie please advise if the manholes to retaining wall 1A (coordinates shown within the attached drawing) are still required. The design for the base of Retaining wall 1A currently includes for two manholes. Could tie please advise on how to proceed.	Crawford,Iain	18/06/2010

BFB00003291_0229

System Process Register

Company Bilfinger Berger Civil
 Channel ETN (<http://etn.mybiw.com>)



Status	System Ref	WorkPackage Ref	Publishing Company	Title	Content	Publishing User	Issued Date
Need further clarification	RFI-00065	BSC-64	Siemens Transportation Systems	RFI 065 - ELECTRICITY AND METER SUPPLIER	ELECTRICITY AND METER SUPPLIER Issued 03.07.08	Roland Brueckmann	24/07/2008
Need further clarification	RFI-00074	BSC-73	Siemens Transportation Systems	RFI 074 - WASHING PLANT DESIGN	WASHING PLANT DESIGN Issued 11.07.08	Norbert Wunder	24/07/2008
Need further clarification	RFI-00077	BSC-76	Siemens Transportation Systems	RFI 077 - RE-ISSUE OF RFI 067	RE-ISSUE OF RFI 067 Issued 14.07.08	Robert Kraemer	24/07/2008
Need further clarification	RFI-00100	BSC-99	Siemens Transportation Systems	RFI 00100- ETN(TRW)TIE&ABC#050020 - Value Engineering TRW	Value Engineering Opportunity – Change from Embedded track to ballasted track; Tie reference: INF_CO	Klaus Dieker	20/08/2008
Need further clarification	RFI-00215		Siemens Transportation Systems	TRAMSTOP CABINET KEY SUITE SYSTEM INFORMATION	Can TIE please provide the following:-•Type of key required for Tramstop Cabinet lock to equip	Michael Wilken	06/04/2009
Need further clarification	RFI-00218		Siemens Transportation Systems	Ingliston Park and Ride existing CCTV cameras.	Section 35.9.1 of the ER (issue 4) states that "The ODN also needs to allow for 7 existing, plus t	Michael Wilken	06/04/2009
Need further clarification	RFI-00239		Siemens Transportation Systems	Provision of timetable and timetable data	Please would tie provide to BSC an initial operational timetable including: 1. 'Compulsory' and	Michael Wilken	15/06/2009

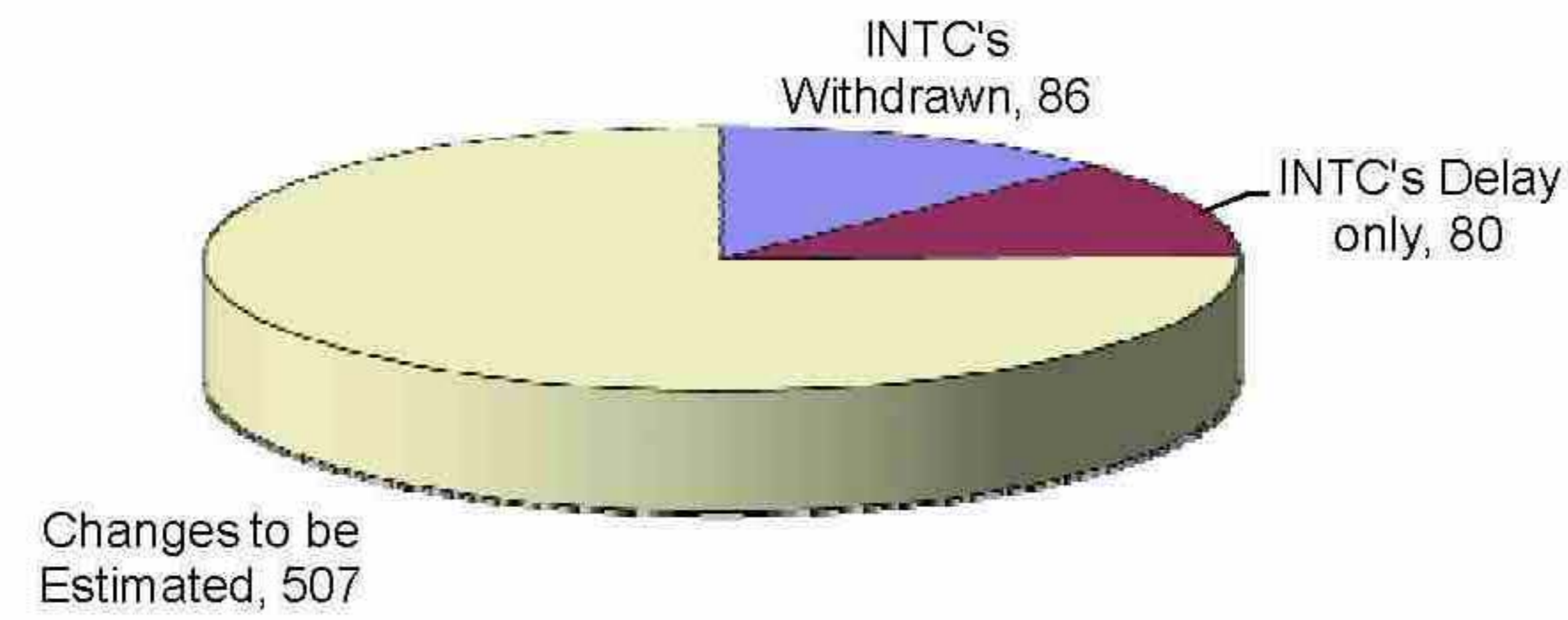
BFB00003291_0230

10.6 Civil Works Procurement Schedule

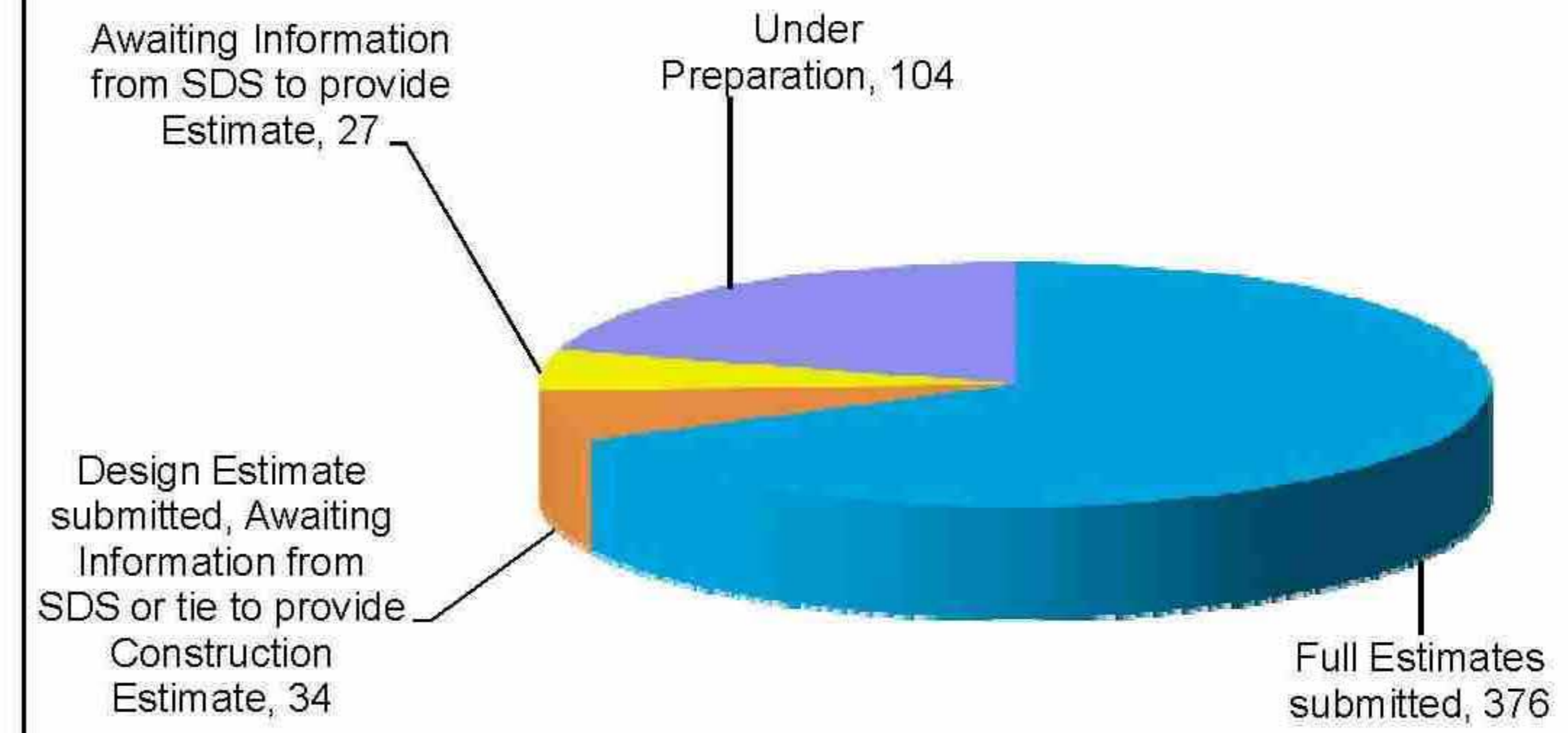
10.7 Change Register

**INFRACO ESTIMATES SUBMITTED VS TIE CHANGE ORDERS ISSUED
STATUS AT 1 JULY 2010**

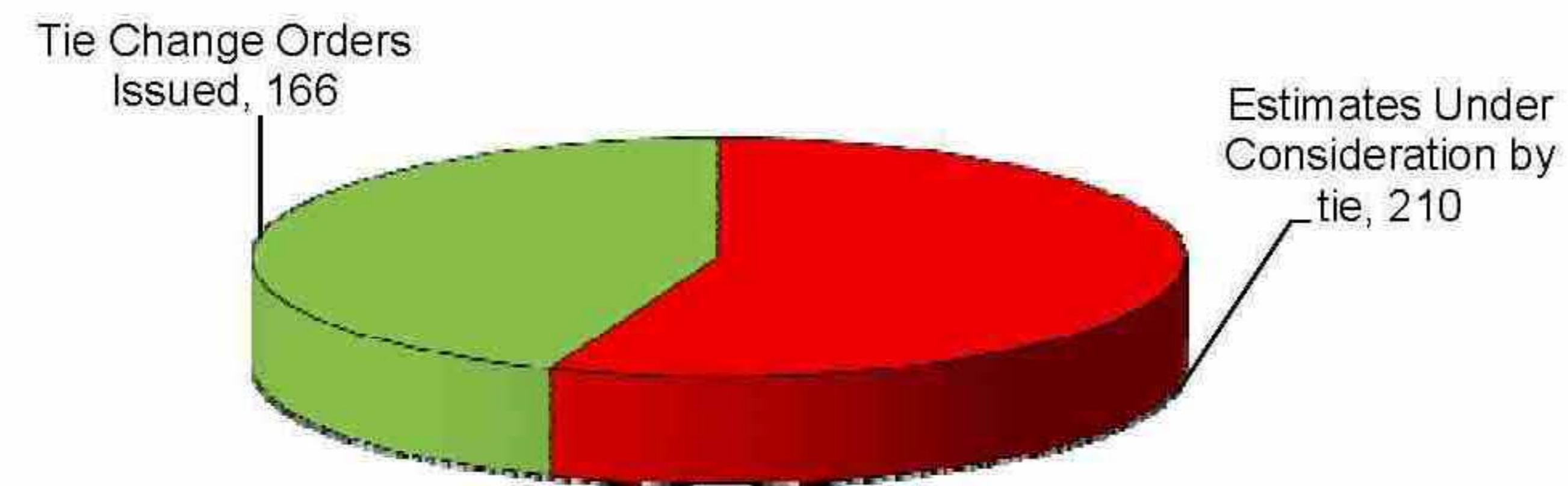
**Overall Changes (TCN's & INTC's)
Total 673**



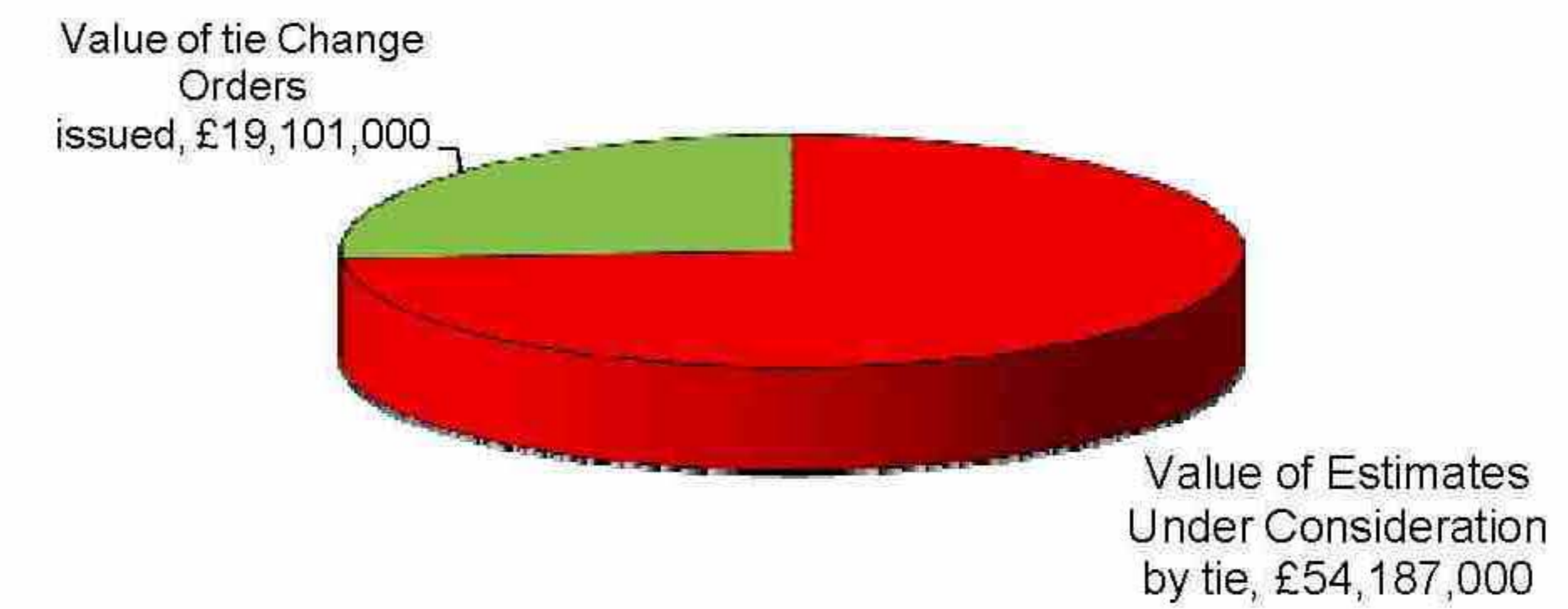
**Overall Estimates (TCN's & INTC's)
Total 507**



**Overall Estimates (TCN's & INTC's) submitted and Tie Change Orders Issued
Total 376 = 342 + 34**



Value of TCN's & INTC's submitted VS Tie Change Orders Issued



ETN INFRACO NOTIFICATION OF THE CHANGE (INTC)
CONFIDENTIAL



References	Change Order Number	Description	Date Identified	Date of further letters	Letter Ref	Agreed in principle	IMC?	Estimate Issued?	Type	Change Type	Pricing Method	Value Estimate (€000)					Section	Change Order Value	Action						
												SOS	Blitinger	Siemens	C-UF	Sub-Total				DH&P	Construction	Other Prelims	Total	E. Agreed	E. Not Agreed
17a	1	Notified Departure in accordance with paragraph 3.4.5.1 and 3.5 of the contract. The MUDFA contractor has been instructed to remove under the MUDFA contract with the South Gate bridge. Bridge west abutment proceeded with design for Option 4-D530	03/02/2009	1006009 1006010 2402009 2402010 2742009 2742010 0506009 0506010 0802009 0802010 0764009 1464009 1205009 1205010 2205009 2205010 2965009 2965010 0769009 0769010 0910009 0910010 2110009 2411009 3011009	25_1201/INF/069 SD-SULEM130-SW-LET-01382 INF CORR 788 25_1201/BOC/171 25_1201/BOC/172 INF CORR 785 25_1201/BOC/1801 INF CORR 882 25_1201/BOC/1802 SD-SULEM130-SW-LET-01475 INF CORR 1136/TC 25_1201/INF/027 SD-SULEM130-SW-LET-01529 25_1201/INF/0274 SD-SULEM130-SW-LET-01547 25_1201/INF/027 SD-SULEM130-SW-LET-01600 INF CORR 1486/TC 25_1201/BOC/0757 INF CORR 237/TC INF CORR 237/DC 25_1201/BOC/0746 INF CORR 213/ARB 25_1201/INF/131 SD-SULEM130-SW-LET-01800 2411009	1	D	1	4	61843	0	0	81843	6184	4276	0	27804	0	27804	0	N/A	5B		BSC	
18	1	Notified Departure in accordance with paragraphs 3.4.5.1 and 3.5 of the contract. Schedule Part 4 due to the MUDFA contractor not having completed the various Utility Diversions in the Depot area in accordance with the requirements of the Programme causing delay to the MUDFA contractor's intended sequences. Site Offices and Compound	30/05/2009	0606009 0606010 1306009 2265009 0606009 0606010 1306009 1306010 1806009 1806010 0107009 1707009 2807009 2807010 0212009 1812009 0707009 1505009	BBE-Email SD-SULEM130-SW-LET-01800 BBE-Email - site establishment INF CORR 208 25_1201/INF/145 INF CORR 003 BBE-Email BBE-Email BBE-Email & BBA/Start Email 25_1201/INF/150 BBE-Email Siemens Proposal Email 25_1201/INF/008 0212009 25_1201/MRH/1076 INF CORR 537 0707009 25_1201/MRH/1247 1505009	1	D	1	4	33170	0	0	33170	3317	2165	0	44746	0	44746	0	N/A	6	0		BSC
19	1	Retrospective instruction to carry out Archaeological Survey in the Cable Jde House as the letter DEL-CORR-176 dated 8th May 2008	02/06/2009	1006009 2769009 0207009 0509009 1809009	BE-DEL-CORR-176 25_1201/INF/147 25_1201/INF/156 25_1201/INF/164 25_1201/INF/162 INF CORR 170 - TCO-0001	1	D	1	4	4430	0	0	4430	443	326	0	5201	0	5201	0	N/A	2	5,201		BSC
20	2	Disconnect Utilities to Cable Jde House prior to demolition as the Permit (Asbestor 25m) dated 12th March 2008 which is an agreement with Schedule Part 4, paragraph 4.5.4. Appendix B Part 3 Table 2, Item 1	02/06/2009	1606009 1006009 2769009 0207009 0509009 1809009	BBE-Email 25_1201/INF/147 25_1201/INF/156 25_1201/INF/164 INF CORR 170 - TCO-0001		D	1	4	0	0	0	0	0	0	0	0	0	0	0	N/A	2	0		Inf
21	2	Notified Departure in accordance with paragraphs 3.4.37 and 3.5 of the contract. Schedule Part 4 due to the MUDFA contractor not having completed the various Utility Diversions in the Depot area in accordance with the requirements of the Programme causing delay to the MUDFA contractor's intended sequences. Site Offices and Compound	02/06/2009	2205009 2305009 1006009 2769009 0207009 0509009 1809009	FT - BBS 011 BBE-Email 25_1201/INF/147 25_1201/INF/156 25_1201/INF/164 INF CORR 170 - TCO-0001		D	1	4	4488	0	0	4488	448	332	0	5288	0	5288	0	N/A	2	5,288		BSC
22		Notified Departure in accordance with paragraphs 3.4.37 and 3.5 of the contract. Schedule Part 4 due to the MUDFA contractor not having completed the various Utility Diversions in the Depot area in accordance with the requirements of the Programme causing delay to the MUDFA contractor's intended sequences. Site Offices and Compound	02/06/2009	1006009 2769009 0207009	TO - BBS 317.3 BE-PRO-CORR-57 25_1201/INF/156		M	1	4	0	0	0	0	0	0	0	0	0	0	0	N/A	2	0		BSC
23	12	Notified Departure in accordance with paragraph 3.4.36 and 3.5 of the contract. Schedule Part 4 due to the additional requirement to demolish the Cable Jde House as the letter DEL-CORR-176 dated 8th May 2008 and direction to the InfraCO's intended programme and method of work.	02/06/2009	1402009 1006009 2769009 0207009 0509009 1809009 2301009	TO - BBS 317.3 25_1201/INF/147 25_1201/INF/156 25_1201/INF/164 INF CORR 537 2301009		D	1	4	1,750	0	0	1,750	175	130	0	2,020	0	2,020	0	N/A	2	2,020		Inf
24		Instruction to proceed with 'Verify House Access Road' for IFC	08/05/2009	1706009 2411009 1201009	BE-DEL-CORR-176 25_1201/INF/156 INF CORR 583		M	1	4	0	0	0	0	0	0	0	0	0	0	0	N/A	2	0		BSC
25		Instruction to proceed with the demolition of Cable Jde House pre IFC	08/05/2009	2204009 0304009 0102009 0305009	25_1201/INF/118 PS-CORR-207 BE-DEL-CORR-176 Final IFC from BBS		M	1	4	0	0	0	0	0	0	0	0	0	0	0	N/A	2	0		BSC
26		Delay to issue For Construction (IFC) Submissions - Section 1D due to the requirement to demolish the Cable Jde House as the letter DEL-CORR-176 dated 8th May 2008 and direction to the InfraCO's intended programme and method of work.	17/06/2009	2406009 0107009 3007009 0201009 1812009	25_1201/INF/156 SD-SULEM130-SW-LET-01700 25_1201/INF/026 25_1201/INF/151		M	1	4	0	0	0	0	0	0	0	0	0	0	0	N/A	1C	0		BSC
27		Delay to issue For Construction (IFC) Submissions - Section 1D due to the requirement to demolish the Cable Jde House as the letter DEL-CORR-176 dated 8th May 2008 and direction to the InfraCO's intended programme and method of work.	17/06/2009	0107009 3007009 0201009 1812009	25_1201/INF/156 SD-SULEM130-SW-LET-01700 25_1201/INF/026 25_1201/INF/151		M	1	4	0	0	0	0	0	0	0	0	0	0	0	N/A	1D	0		BSC
28		Delay to issue For Construction (IFC) Submissions - Section 1B due to the requirement to demolish the Cable Jde House as the letter DEL-CORR-176 dated 8th May 2008 and direction to the InfraCO's intended programme and method of work.	17/06/2009	2506009 0107009 3007009 1809009 1309009 2410009 1711009 1812009	25_1201/INF/156 25_1201/INF/026 25_1201/INF/151 25_1201/INF/156 25_1201/INF/026 25_1201/INF/151		M	1	4	0	0	0	0	0	0	0	0	0	0	0	N/A	1B	0		BSC

ETN INFRA CO NOTIFICATION OF THE CHANGE (INTC)

MEMORANDUM FOR THE INFRA CO

Change Order Issued

Table with columns: References, Description, Date Identified, Date of further Letters, Letter Ref, Agreed in principle, TMC?, Estimate Issued?, Change Type, Pricing Method, Allocation of Cost, Section, Change Order Value, Action. Rows 25-35 contain detailed change order information.

ETN INFRA CO NOTIFICATION OF THE CHANGE (INTC)



Table with columns: References, Description, Date Identified, Date of further letters, Letter Ref, Agreed in principle, TMC?, Estimate Issued?, Change Order?, Type, Change Type, Pricing Method, SCS, Bilfinger, Siemens, C-UF, E-Submitted, Value Estimate (EOP), Other Prelims, Construction Prelims, DMS, P, Sub-Total, E-Approved, E-Not Approved, Form of VE, Number, Section, Change Order Value, Action.