

# EDINBURGH TRAM NETWORK

Activity ID	Activity Name	Original Duration	Start	Finish	Duration % Complete	Rev 5c Start	Rev 5c Finish	2012														
								Jan	Feb	Mar	Apr	May	Jun	Jul	Aug	Sep	Oct	Nov	Dec			
1D-14V-SP2-538	Capping Layer to Adjacent Carriageway (600mm)	6	11-Apr-12 A	11-Apr-12 A	100%	16-Apr-12	23-Apr-12															
<b>Make Good Formation</b>		1	11-Apr-12 A	03-Jul-12 A	100%	24-Apr-12	24-Apr-12															
1D-14V-SP2-539	Make good Formation with Type 1 (Ave 220mm)	1	11-Apr-12 A	03-Jul-12 A	100%	24-Apr-12	24-Apr-12															
<b>OLE Foundations</b>		212	18-Jan-12 A	06-Jul-12 A	100%	24-Apr-12	26-Apr-12															
1D-14V-SP2-D1	TT take full possession of SP2	0	18-Jan-12 A	29-Feb-12 A	100%																	
1D-14V-SP2-533	Core/Cast OLE Pole Foundations	3	09-Mar-12 A	06-Jul-12 A	100%	24-Apr-12	26-Apr-12															
1D-14V-SP2-D5	TT retake full possession of SP2	0	29-Mar-12 A	15-Jun-12 A	100%																	
<b>Trackform</b>		6	04-Jul-12 A	11-Jul-12 A	100%	27-Apr-12	04-May-12															
1D-14V-SP2-541	Carry out inspection and testing of Subgrade	1	04-Jul-12 A	04-Jul-12 A	100%	27-Apr-12	27-Apr-12															
1D-14V-SP2-542	Blinding Concrete	1	05-Jul-12 A	09-Jul-12 A	100%	30-Apr-12	30-Apr-12															
1D-14V-SP2-543	250mm RC Improvement Slab (+ cure lag)	4	09-Jul-12 A	11-Jul-12 A	100%	01-May-12	04-May-12															
<b>Inspection &amp; Testing of Sub Grade</b>		0			0%																	
<b>Blinding</b>		0			0%																	
<b>Place RC Improvement Slab</b>		0			0%																	
<b>Track Laying</b>		8	31-Mar-11 A	24-Aug-12 A	100%	16-May-12	06-Jun-12															
1D-14V-SP2-545	Installation of Noise & Vibration Mat (if reqd)	0	31-Mar-11 A		100%	25-May-12																
1D-14V-SP2-544	Access for Track Laying	0	06-Aug-12 A		100%	16-May-12																
1D-14V-TRCK-70(3)	Set track (1x108m)(sleepers/rail) + mob	7	06-Aug-12 A	14-Aug-12 A	100%	25-May-12	05-Jun-12															
1D-14V-SP2-547	Welding & Grinding	3	06-Aug-12 A	14-Aug-12 A	100%	29-May-12	31-May-12															
1D-14V-SP2-548	Drainage / Rail Connections	3	06-Aug-12 A	14-Aug-12 A	100%	29-May-12	31-May-12															
1D-14V-SP2-549	Installation of IMU Boxes and Loops	3	06-Aug-12 A	14-Aug-12 A	100%	29-May-12	31-May-12															
1D-14V-SP2-710	Final Rail Alignment - Check and Approve	3	06-Aug-12 A	14-Aug-12 A	100%	30-May-12	01-Jun-12															
1D-14V-SP2-551	230mm Concrete Supporting Layer (+ cure lag)	4	16-Aug-12 A	24-Aug-12 A	100%	01-Jun-12	06-Jun-12															
<b>Drainage &amp; Ducts</b>		267	29-Mar-12 A	22-Oct-12	98.13%	23-Mar-12	10-May-12															
<b>Ducts</b>		267	02-Apr-12 A	22-Oct-12	98.13%	04-Apr-12	10-May-12															
<b>Traction Ducts</b>		224	08-May-12 A	02-Jul-12 A	100%	24-Apr-12	08-May-12															
1D-14V-SP2-D29	TT retake possession of SP2 from 890 to SP5	0	08-May-12 A	14-Jun-12 A	100%																	
1D-14V-SP2-D31	Ducting Route to be redesigned	0	09-May-12 A	14-Jun-12 A	100%																	
1D-14V-SP2-D30	TT retake full possession of SP2 to resolve conflicts with virgin media and manholes installed by TT	0	14-May-12 A	14-Jun-12 A	100%																	
1D-14V-SP2-529	Traction Ducts & Chambers	10	25-Jun-12 A	02-Jul-12 A	100%	24-Apr-12	08-May-12															
<b>Comms Ducts</b>		0	16-Oct-12	16-Oct-12	0%	24-Apr-12	24-Apr-12															
1D-14V-SP2-720	Comms Ducts & Chambers	0	16-Oct-12		0%	24-Apr-12																
<b>Traffic Signal Ducts</b>		267	02-Apr-12 A	22-Oct-12	98.13%	04-Apr-12	10-Apr-12															
1D-14V-SP2-D20	TT take SP2 at Torphichen Road Junction	0	02-Apr-12 A	04-Apr-12 A	100%																	
1D-14V-SP2-D27	TT retake possession of SP2 from 890 to SP5	0	08-May-12 A	14-Jun-12 A	100%																	
1D-14V-SP2-D28	TT retake full possession of SP2 to resolve conflicts with virgin media and manholes installed by TT	0	14-May-12 A	14-Jun-12 A	100%																	
1D-14V-SP2-D36	Lagan to extend ducts to edge of carriageway	0	14-Aug-12 A	10-Sep-12 A	100%																	
1D-14V-SP2-531-D6	tNC 682 issued	0	10-Sep-12 A	10-Sep-12 A	100%																	
1D-14V-SP2-D37	Lagan extend ducting	0	11-Sep-12 A	15-Oct-12	0%																	
1D-14V-SP2-531	Traffic Signal Ducts	4	16-Oct-12	22-Oct-12	0%	04-Apr-12	10-Apr-12															
<b>Lighting Ducts</b>		265	10-Sep-12 A	18-Oct-12	99.25%	09-May-12	10-May-12															
1D-14V-SP2-532-D2	tNC 682 issued	0	10-Sep-12 A	10-Sep-12 A	100%																	
1D-14V-SP2-532	Lighting Ducts	2	16-Oct-12	18-Oct-12	0%	09-May-12	10-May-12															
<b>Installation of IMU Drains and Cable Ducting</b>		212	08-May-12 A	25-Jun-12 A	100%	25-Apr-12	26-Apr-12															

Date	Revision	Checked	Approved	Date	Revision	Checked	Approved
02-Feb...	Revision 0	SCS/M...	BSC	28-Jun-11	Revision 3a	SCS/MHE	BSC
16-Feb...	Revision 1	SCS/M...	BSC	08-Sep-11	Revision 4	SCS	BSC
18-Feb...	Revision 2	SCS/M...	BSC	16-Feb-12	Revision 4c	SCS	BBS
06-Ma...	Revision 3	SCS/M...	BSC	21-Jun-12	Revision 5c	SCS	BBS
				25-Oct-12	Rev. 5c Progressed to 121013	SCS	BBS

Remaining Level of Effort	Critical Remaining Work
Changed Works	Rev 5c Milestone
Revision 5c	Milestone
Actual Work	Changed Works
Remaining Work	Summary

Activity ID	Activity Name	Original Duration	Start	Finish	Duration % Complete	Rev 5c Start	Rev 5c Finish	2012														
								Jan	Feb	Mar	Apr	May	Jun	Jul	Aug	Sep	Oct	Nov	Dec			
1D-14V-SP2-700	Installation of IMU Drains and Cable Ducting	2	08-May-12 A	25-Jun-12 A	100%	25-Apr-12	26-Apr-12															
1D-14V-SP2-D34	TT retake possession of SP2 from 890 to SP5	0	08-May-12 A	14-Jun-12 A	100%																	
1D-14V-SP2-D33	TT take possession of all of SP2	0	14-May-12 A	14-Jun-12 A	100%																	
<b>Drains</b>		197	29-Mar-12 A	10-Sep-12 A	100%	23-Mar-12	03-Apr-12															
<b>Outfall Connections</b>		120	29-Mar-12 A	03-Jul-12 A	100%	23-Mar-12	28-Mar-12															
1D-14V-SP2-D16	TT take full possession of SP2	0	29-Mar-12 A	02-Apr-12 A	100%																	
1D-14V-SP2-D17	TT take SP2 at Torphichen Road Junction	0	02-Apr-12 A	10-Apr-12 A	100%																	
1D-14V-SP2-D21	TT retake full possession of SP2	0	12-Apr-12 A	08-May-12 A	100%																	
1D-14V-SP2-527	Outfall Connections	4	16-Apr-12 A	03-Jul-12 A	100%	23-Mar-12	28-Mar-12															
1D-14V-SP2-D22	TT retake possession of SP2 from 890 to SP5	0	08-May-12 A	14-Jun-12 A	100%																	
1D-14V-SP2-D23	TT retake full possession of SP2 to resolve conflicts with virgin media and manholes installed by TT	0	14-May-12 A	14-Jun-12 A	100%																	
<b>Drainage to Discharge Points</b>		197	29-Mar-12 A	10-Sep-12 A	100%	29-Mar-12	03-Apr-12															
1D-14V-SP2-D18	TT take full possession of SP2	0	29-Mar-12 A	02-Apr-12 A	100%																	
1D-14V-SP2-D19	TT take SP2 at Torphichen Road Junction	0	02-Apr-12 A	10-Apr-12 A	100%																	
1D-14V-SP2-D24	TT retake full possession of SP2	0	12-Apr-12 A	08-May-12 A	100%																	
1D-14V-SP2-528	Drainage to Discharge Points	4	23-Apr-12 A	10-Sep-12 A	100%	29-Mar-12	03-Apr-12															
1D-14V-SP2-D25	TT retake possession of SP2 from 890 to SP5	0	08-May-12 A	14-Jun-12 A	100%																	
1D-14V-SP2-D26	TT retake full possession of SP2 to resolve conflicts with virgin media and manholes installed by TT	0	14-May-12 A	14-Jun-12 A	100%																	
<b>Pavement Construction over tracks</b>		266	17-Jul-12 A	09-Oct-12 A	100%	07-Jun-12	11-Jun-12															
1D-14V-SP2-555-D2	Programme Logic	0	17-Jul-12 A	02-Oct-12 A	100%																	
1D-14V-SP2-555-D3	Resources working in SP1	0	17-Jul-12 A	02-Oct-12 A	100%																	
1D-14V-SP2-555	Concrete Upstand & infill	3	02-Oct-12 A	09-Oct-12 A	100%	07-Jun-12	11-Jun-12															
<b>Phase SP2 Carriageway Construction</b>		275	14-Aug-12 A	01-Nov-12	95.64%	24-Apr-12	21-Jun-12															
1D-14V-SP2-558	Kerbing - Eastbound/Islands/Crossings	6	20-Sep-12 A	20-Sep-12 A	100%	30-Apr-12	08-May-12															
1D-14V-SP2-561	Sub-base shape all carriageway areas	1	16-Oct-12	17-Oct-12	0%	09-May-12	09-May-12															
1D-14V-SP2-563	Footpath Works	6	16-Oct-12	24-Oct-12	0%	09-May-12	16-May-12															
1D-14V-SP2-564	225mm Base	4	23-Oct-12	29-Oct-12	0%	10-May-12	15-May-12															
1D-14V-SP2-565	60mm Binder	2	29-Oct-12	31-Oct-12	0%	19-Jun-12	20-Jun-12															
1D-14V-SP2-566	35mm Wearing Course	1	31-Oct-12	01-Nov-12	0%	21-Jun-12	21-Jun-12															
<b>Sub base</b>		267	14-Aug-12 A	20-Sep-12 A	100%	24-Apr-12	27-Apr-12															
1D-14V-SP2-D39	Now foam concrete	0	14-Aug-12 A	10-Sep-12 A	100%																	
1D-14V-SP2-557	Sub-base 220mm all carriageway areas	4	19-Sep-12 A	20-Sep-12 A	100%	24-Apr-12	27-Apr-12															
<b>Gullies</b>		274	14-Aug-12 A	31-Oct-12 A	100%	09-May-12	09-May-12															
1D-14V-SP2-D40	TT take possession of Carriageway	0	14-Aug-12 A	10-Sep-12 A	100%																	
1D-14V-SP2-559	Gullies	1	20-Sep-12 A	31-Oct-12 A	100%	09-May-12	09-May-12															
<b>Traffic Signals</b>		267	10-Sep-12 A	22-Oct-12	100%	09-May-12	09-May-12															
1D-14V-SP2-562-D2	tNC 682 issued	0	10-Sep-12 A	10-Sep-12 A	100%																	
1D-14V-SP2-562	Traffic Signals	0	22-Oct-12		0%	09-May-12																
<b>Finishes</b>		5	16-Oct-12	23-Oct-12	0%	02-May-12	09-May-12															
1D-14V-SP2-810	Signs / Street Furniture	5	16-Oct-12	23-Oct-12	0%	02-May-12	09-May-12															
<b>Phase SP3 - Outbound Ch.130,670 – 130,380 (Crescents to Princes Street)</b>		397	17-Jan-12 A	22-Apr-13	66.01%	13-Jul-12	04-Jan-13															
<b>Excavation &amp; Track Construction</b>		382	17-Jan-12 A	01-Apr-13	68.6%	13-Jul-12	12-Nov-12															
<b>Excavation</b>		289	17-Jan-12 A	12-Nov-12	92.86%	13-Jul-12	25-Jul-12															
<b>Plane</b>		267	17-Jan-12 A	12-Nov-12	99.93%	13-Jul-12	16-Jul-12															
1D-14P-SP3-568	Plane Main Carriageway 250mm	2	17-Jan-12 A	12-Nov-12	90%	13-Jul-12	16-Jul-12															

Date	Revision	Checked	Approved	Date	Revision	Checked	Approved
02-Feb...	Revision 0	SCS/M...	BSC	28-Jun-11	Revision 3a	SCS/MHE	BSC
16-Feb...	Revision 1	SCS/M...	BSC	08-Sep-11	Revision 4	SCS	BSC
18-Feb...	Revision 2	SCS/M...	BSC	16-Feb-12	Revision 4c	SCS	BBS
06-Ma...	Revision 3	SCS/M...	BSC	21-Jun-12	Revision 5c	SCS	BBS
				25-Oct-12	Rev. 5c Progressed to 121013	SCS	BBS

Remaining Level of Effort	Critical Remaining Work
Changed Works	Rev 5c Milestone
Revision 5c	Milestone
Actual Work	Changed Works
Remaining Work	Summary

# EDINBURGH TRAM NETWORK

Activity ID	Activity Name	Original Duration	Start	Finish	Duration % Complete	Rev 5c Start	Rev 5c Finish	2012											
								Jan	Feb	Mar	Apr	May	Jun	Jul	Aug	Sep	Oct	Nov	Dec
1D-14P-SP3-D1	Road Planned for TT Access	0	17-Jan-12 A	18-Jan-12 A	100%			Road Planned for TT Access											
1D-14P-SP3-D2	TT take full possession of SP3	0	18-Jan-12 A	27-Feb-12 A	100%			TT take full possession of SP3											
<b>Excavate</b>		273	08-Mar-12 A	15-Oct-12	100%	17-Jul-12	24-Jul-12	15-Oct-12, Excavate											
1D-14P-SP3-578	Excavate to Formation for Carriageway and Track (incl for Capping/Type 1)	6	08-Mar-12 A	15-Oct-12 A	100%	17-Jul-12	24-Jul-12	Excavate to Formation											
1D-14P-SP3-D4	TT take full possession of SP3 & excavate track only	0	31-May-12 A	11-Jun-12 A	100%			TT take full possession of SP3 & excavate track only											
1D-14P-SP3-D3	Changed sequence of works	0	10-Jun-12 A	15-Oct-12	0%			Changed sequence of works											
<b>Remove Kerbs</b>		6	13-Oct-12 A	13-Oct-12 A	100%	17-Jul-12	24-Jul-12	13-Oct-12 A, Remove Kerb											
1D-14P-SP3-579	Remove existing kerbs	6	13-Oct-12 A	13-Oct-12 A	100%	17-Jul-12	24-Jul-12	Remove existing kerbs											
<b>Suitability of Formation</b>		267	08-Mar-12 A	11-Jun-12 A	100%	17-Jul-12	17-Jul-12	11-Jun-12 A, Suitability of Formation											
1D-14P-SP3-580	Check suitability of formation (ongoing)	0	08-Mar-12 A		100%	17-Jul-12		Check suitability of formation											
1D-14P-SP3-D5	TT take full possession of SP3 & excavate track only	0	31-May-12 A	11-Jun-12 A	100%			TT take full possession of SP3 & excavate track only											
<b>Capping Layer</b>		5	13-Oct-12 A	13-Oct-12 A	100%	18-Jul-12	24-Jul-12	13-Oct-12 A, Capping Layer											
1D-14P-SP3-581	Capping Layer to Adjacent Carriageway (600mm)	5	13-Oct-12 A	13-Oct-12 A	100%	18-Jul-12	24-Jul-12	Capping Layer											
<b>Make Good Formation</b>		1	13-Apr-12 A	10-Jun-12 A	100%	25-Jul-12	25-Jul-12	10-Jun-12 A, Make Good Formation											
1D-14P-SP3-582	Make good Formation with Type 1 (Ave 220mm)	1	13-Apr-12 A	10-Jun-12 A	100%	25-Jul-12	25-Jul-12	Make good Formation											
<b>OLE Foundations</b>		97	27-Feb-12 A	04-Mar-13	93.82%	13-Jul-12	16-Oct-12	Core/Cast OLE Pole Foundations											
1D-14P-SP3-576	Core/Cast OLE Pole Foundations	4	27-Feb-12 A	23-Mar-12 A	100%	13-Jul-12	18-Jul-12	Core/Cast OLE Pole Foundations											
1D-14P-SP3-577	OLE Wall Fixings Outbound	6	22-Feb-13	04-Mar-13	0%	09-Oct-12	16-Oct-12	OLE Wall Fixings Outbound											
<b>Trackform</b>		37	14-Nov-12	04-Jan-13	0%	30-Jul-12	15-Aug-12	Carry out inspection and testing of Subgrade											
1D-14P-SP3-584	Carry out inspection and testing of Subgrade	1	14-Nov-12	15-Nov-12	0%	30-Jul-12	30-Jul-12	Carry out inspection and testing of Subgrade											
1D-14P-SP3-585	Blinding Concrete	4	15-Nov-12	21-Nov-12	0%	31-Jul-12	03-Aug-12	Blinding Concrete											
1D-14P-SP3-586	250mm RC Improvement Slab (+ cure lag)	8	21-Nov-12	04-Jan-13	0%	06-Aug-12	15-Aug-12	250mm RC Improvement Slab (+ cure lag)											
<b>Inspection &amp; Testing of Sub Grade</b>		0			0%														
<b>Blinding</b>		0			0%														
<b>Place RC Improvement Slab</b>		0			0%														
<b>Track Laying</b>		51	17-Jan-13	01-Apr-13	0%	28-Aug-12	12-Nov-12												
1D-14P-SP3-587	Access for Track Laying	0	17-Jan-13		0%	28-Aug-12													
1D-14P-SP3-588	Installation of Noise & Vibration Mat (if reqd)	0	04-Feb-13		0%	19-Sep-12													
1D-14P-TRCK-70(3)	Set track (1x288m)(sleepers/rail) + mob	14	04-Feb-13	22-Feb-13	0%	19-Sep-12	08-Oct-12												
1D-14P-SP3-590	Welding & Grinding	8	05-Feb-13	15-Feb-13	0%	20-Sep-12	01-Oct-12												
1D-14P-SP3-591	Drainage / Rail Connections	8	05-Feb-13	15-Feb-13	0%	20-Sep-12	01-Oct-12												
1D-14P-SP3-592	Installation of IMU Boxes and Loops	8	05-Feb-13	15-Feb-13	0%	20-Sep-12	01-Oct-12												
1D-14P-SP3-593	Final Rail Alignment - Check and Approve	8	06-Feb-13	18-Feb-13	0%	21-Sep-12	02-Oct-12												
1D-14P-SP3-594	230mm Concrete Supporting Layer (+ cure lag)	10	08-Feb-13	22-Feb-13	0%	25-Sep-12	08-Oct-12												
1D-14P-SP3-616	Mill Rail Joint / Sealing Compound	6	21-Mar-13	01-Apr-13	0%	05-Nov-12	12-Nov-12												
<b>Drainage &amp; Ducts</b>		103	31-May-12 A	20-Mar-13	11.31%	17-Jul-12	01-Nov-12												
<b>Ducts</b>		91	12-Nov-12	20-Mar-13	0%	25-Jul-12	01-Nov-12												
1D-14P-SP3-583	Installation of IMU Drains and Cable Ducting	2	12-Nov-12	14-Nov-12	0%	26-Jul-12	27-Jul-12	Installation of IMU Drains and Cable Ducting											
1D-14P-SP3-572	Traction Ducts & Chambers	24	12-Nov-12	17-Jan-13	0%	25-Jul-12	27-Aug-12	Traction Ducts & Chambers											
1D-14P-SP3-573	Comms Ducts & Chambers	0	12-Nov-12		0%	25-Jul-12		Comms Ducts & Chambers											
1D-14P-SP3-574	Traffic Signal Ducts	4	12-Nov-12	16-Nov-12	0%	09-Aug-12	14-Aug-12	Traffic Signal Ducts											
1D-14P-SP3-575	Lighting Ducts	8	08-Mar-13	20-Mar-13	0%	23-Oct-12	01-Nov-12	Lighting Ducts											
<b>Traction Ducts</b>		0			0%														
<b>Comms Ducts</b>		0			0%														
<b>Traffic Signal Ducts</b>		0			0%														

Date	Revision	Checked	Approved	Date	Revision	Checked	Approved
02-Feb...	Revision 0	SCS/M...	BSC	28-Jun-11	Revision 3a	SCS/MHE	BSC
16-Feb...	Revision 1	SCS/M...	BSC	08-Sep-11	Revision 4	SCS	BSC
18-Feb...	Revision 2	SCS/M...	BSC	16-Feb-12	Revision 4c	SCS	BBS
06-Ma...	Revision 3	SCS/M...	BSC	21-Jun-12	Revision 5c	SCS	BBS
				25-Oct-12	Rev. 5c Progressed to 121013	SCS	BBS

- Remaining Level of Effort
- Changed Works
- Revision 5c
- Actual Work
- Remaining Work
- Critical Remaining Work
- Rev 5c Milestone
- Milestone
- Changed Works
- Summary

# EDINBURGH TRAM NETWORK

Activity ID	Activity Name	Original Duration	Start	Finish	Duration % Complete	Rev 5c Start	Rev 5c Finish	2012											
								Jan	Feb	Mar	Apr	May	Jun	Jul	Aug	Sep	Oct	Nov	Dec
<b>Lighting Ducts</b>		0			0%														
<b>Installation of IMU Drains and Cable Ducting</b>		0			0%														
<b>Drains</b>		13	31-May-12 A	10-Jun-12 A	100%	17-Jul-12	08-Aug-12												
1D-14P-SP3-571	Drainage to Discharge Points	13	31-May-12 A	10-Jun-12 A	100%	23-Jul-12	08-Aug-12												
1D-14P-SP3-570	Outfall Connections	4	10-Jun-12 A	10-Jun-12 A	100%	17-Jul-12	20-Jul-12												
<b>Outfall Connections</b>		0			0%														
<b>Drainage to Discharge Points</b>		0			0%														
<b>Crescent</b>		23	20-Mar-13	22-Apr-13	0%	02-Nov-12	04-Jan-13												
1D-14P-SP3-836	Excavate existing junction	1	20-Mar-13	21-Mar-13	0%	02-Nov-12	02-Nov-12												
1D-14P-SP3-807	Kerbing	10	21-Mar-13	05-Apr-13	0%	05-Nov-12	16-Nov-12												
1D-14P-SP3-818	Setted Area	7	05-Apr-13	16-Apr-13	0%	19-Nov-12	27-Nov-12												
1D-14P-SP3-809	Footpath	4	16-Apr-13	22-Apr-13	0%	28-Nov-12	04-Jan-13												
<b>Pavement Construction over tracks</b>		6	22-Feb-13	04-Mar-13	0%	09-Oct-12	16-Oct-12												
1D-14P-SP3-821	Concrete Upstand & Infill	6	22-Feb-13	04-Mar-13	0%	09-Oct-12	16-Oct-12												
<b>Phase SP3 Carriageway Construction</b>		95	12-Nov-12	26-Mar-13	0%	25-Jul-12	07-Nov-12												
1D-14P-SP3-605	Sub-base 220mm all carriageway areas	4	12-Nov-12	16-Nov-12	0%	25-Jul-12	30-Jul-12												
1D-14P-SP3-606	Kerbing - Eastbound/Islands/Crossings	10	22-Feb-13	08-Mar-13	0%	09-Oct-12	22-Oct-12												
1D-14P-SP3-609	Sub-base shape all carriageway areas	4	05-Mar-13	11-Mar-13	0%	18-Oct-12	23-Oct-12												
1D-14P-SP3-607	Gullies	2	07-Mar-13	11-Mar-13	0%	22-Oct-12	23-Oct-12												
1D-14P-SP3-610	Traffic Signals	0	08-Mar-13		0%	23-Oct-12													
1D-14P-SP3-611	Pedestrian Guardrails	2	08-Mar-13	12-Mar-13	0%	23-Oct-12	24-Oct-12												
1D-14P-SP3-612	Footpath Works	12	08-Mar-13	26-Mar-13	0%	23-Oct-12	07-Nov-12												
1D-14P-SP3-613	225mm Base	5	11-Mar-13	18-Mar-13	0%	24-Oct-12	30-Oct-12												
1D-14P-SP3-614	60mm Binder	2	18-Mar-13	20-Mar-13	0%	31-Oct-12	01-Nov-12												
1D-14P-SP3-615	35mm Wearing Course	1	20-Mar-13	21-Mar-13	0%	02-Nov-12	02-Nov-12												
<b>Finishes</b>		5	26-Feb-13	05-Mar-13	0%	11-Oct-12	17-Oct-12												
1D-14P-SP3-608	Signs / Street Furniture	5	26-Feb-13	05-Mar-13	0%	11-Oct-12	17-Oct-12												
<b>Phase SP4 - Ch.130,813 - 130,667 (Coates Crescent / Atholl Crescent)</b>		371	19-Jan-12 A	15-Mar-13	74.13%	22-Jun-12	29-Oct-12												
<b>Excavation &amp; Track Construction</b>		347	19-Jan-12 A	11-Feb-13	84.73%	22-Jun-12	25-Sep-12												
<b>Excavation</b>		278	19-Jan-12 A	14-Sep-12 A	100%	22-Jun-12	17-Jul-12												
<b>Plane</b>		253	19-Jan-12 A	10-Aug-12 A	100%	22-Jun-12	26-Jun-12												
1D-14R-SP4-618	Plane Main Carriageway for Overlay	3	19-Jan-12 A	10-Aug-12 A	100%	22-Jun-12	26-Jun-12												
1D-14R-SP4-D1	Road Planned for TT Access	0	19-Jan-12 A	19-Jan-12 A	100%														
1D-14R-SP4-D2	TT take full possession of SP4	0	20-Jan-12 A	27-Feb-12 A	100%														
<b>Excavate</b>		13	06-Aug-12 A	10-Sep-12 A	100%	27-Jun-12	13-Jul-12												
1D-14R-SP4-627	Excavate to Formation for Carriageway and Track (incl for Capping/Type 1)	13	06-Aug-12 A	10-Sep-12 A	100%	27-Jun-12	13-Jul-12												
<b>Remove Kerbs</b>		13	14-Feb-12 A	11-Sep-12 A	100%	27-Jun-12	13-Jul-12												
1D-14R-SP4-628	Remove existing kerbs	13	14-Feb-12 A	11-Sep-12 A	100%	27-Jun-12	13-Jul-12												
<b>Suitability of Formation</b>		0	18-Aug-12 A	18-Aug-12 A	0%	27-Jun-12	27-Jun-12												
1D-14R-SP4-629	Check suitability of formation (ongoing)	0	18-Aug-12 A		100%	27-Jun-12													
<b>Capping Layer</b>		11	10-Sep-12 A	10-Sep-12 A	100%	29-Jun-12	13-Jul-12												
1D-14R-SP4-630	Capping Layer to Adjacent Carriageway (600mm)	11	10-Sep-12 A	10-Sep-12 A	100%	29-Jun-12	13-Jul-12												
<b>Make Good Formation</b>		2	03-Sep-12 A	14-Sep-12 A	100%	16-Jul-12	17-Jul-12												
1D-14R-SP4-631	Make good Formation with Type 1 (Ave 220mm)	2	03-Sep-12 A	14-Sep-12 A	100%	16-Jul-12	17-Jul-12												
<b>OLE Foundations</b>		18	28-Feb-12 A	02-Apr-12 A	100%	22-Jun-12	17-Jul-12												

Date	Revision	Checked	Approved	Date	Revision	Checked	Approved
02-Feb...	Revision 0	SCS/M...	BSC	28-Jun-11	Revision 3a	SCS/MHE	BSC
16-Feb...	Revision 1	SCS/M...	BSC	08-Sep-11	Revision 4	SCS	BSC
18-Feb...	Revision 2	SCS/M...	BSC	16-Feb-12	Revision 4c	SCS	BBS
06-Ma...	Revision 3	SCS/M...	BSC	21-Jun-12	Revision 5c	SCS	BBS
				25-Oct-12	Rev. 5c Progressed to 121013	SCS	BBS

- Remaining Level of Effort
- Critical Remaining Work
- Changed Works
- Rev 5c Milestone
- Revision 5c
- Milestone
- Actual Work
- Changed Works
- Remaining Work
- Summary

# EDINBURGH TRAM NETWORK

Activity ID	Activity Name	Original Duration	Start	Finish	Duration % Complete	Rev 5c Start	Rev 5c Finish	2012														
								Jan	Feb	Mar	Apr	May	Jun	Jul	Aug	Sep	Oct	Nov	Dec			
1D-14R-SP4-626	Core/Cast OLE Pole Foundations	18	28-Feb-12 A	02-Apr-12 A	100%	22-Jun-12	17-Jul-12															
<b>Trackform</b>		15	04-Sep-12 A	01-Oct-12 A	100%	24-Jul-12	13-Aug-12															
1D-14R-SP4-633	Carry out inspection and testing of Subgrade	1	04-Sep-12 A	04-Sep-12 A	100%	24-Jul-12	24-Jul-12															
1D-14R-SP4-634	Blinding Concrete	4	05-Sep-12 A	25-Sep-12 A	100%	25-Jul-12	30-Jul-12															
1D-14R-SP4-635	250mm RC Improvement Slab (+ cure lag)	10	06-Sep-12 A	01-Oct-12 A	100%	31-Jul-12	13-Aug-12															
<b>Inspection &amp; Testing of Sub Grade</b>		0			0%																	
<b>Blinding</b>		0			0%																	
<b>Place RC Improvement Slab</b>		0			0%																	
<b>Track Laying</b>		53	28-Nov-12	11-Feb-13	0%	16-Aug-12	25-Sep-12															
1D-14R-SP4-636	Access for Track Laying	0	28-Nov-12		0%	16-Aug-12																
1D-14R-SP4-637	Installation of Noise & Vibration Mat (if reqd)	0	28-Nov-12		0%	16-Aug-12																
1D-14R-TRCK-90(3)	Track Crossover + mob	13	28-Nov-12	18-Jan-13	0%	16-Aug-12	03-Sep-12															
1D-14/15-SIGN-70	point machine mechanical set up	10	28-Nov-12	13-Dec-12	0%	16-Aug-12	29-Aug-12															
1D-14R-TRCK-70(3)	Set track (2x146m)(sleepers/rail) + mob	15	18-Jan-13	08-Feb-13	0%	04-Sep-12	24-Sep-12															
1D-14R-SP4-640	Welding & Grinding	9	21-Jan-13	01-Feb-13	0%	05-Sep-12	17-Sep-12															
1D-14R-SP4-641	Drainage / Rail Connections	9	21-Jan-13	01-Feb-13	0%	05-Sep-12	17-Sep-12															
1D-14R-SP4-642	Installation of IMU Boxes and Loops	9	21-Jan-13	01-Feb-13	0%	05-Sep-12	17-Sep-12															
1D-14R-SP4-643	Final Rail Alignment - Check and Approve	9	22-Jan-13	04-Feb-13	0%	06-Sep-12	18-Sep-12															
1D-14R-SP4-644	230mm Concrete Supporting Layer (+ cure lag)	12	24-Jan-13	11-Feb-13	0%	10-Sep-12	25-Sep-12															
<b>Drainage &amp; Ducts</b>		326	17-Aug-12 A	11-Jan-13	84.36%	27-Jun-12	21-Aug-12															
<b>Ducts</b>		326	18-Aug-12 A	11-Jan-13	88.35%	16-Jul-12	21-Aug-12															
<b>Traction Ducts</b>		12	13-Sep-12 A	21-Sep-12 A	100%	16-Jul-12	31-Jul-12															
1D-14R-SP4-622	Traction Ducts & Chambers	12	13-Sep-12 A	21-Sep-12 A	100%	16-Jul-12	31-Jul-12															
<b>Comms Ducts</b>		8	18-Aug-12 A	05-Sep-12 A	100%	16-Jul-12	25-Jul-12															
1D-14R-SP4-623	Comms Ducts & Chambers	8	18-Aug-12 A	05-Sep-12 A	100%	16-Jul-12	25-Jul-12															
<b>Traffic Signal Ducts</b>		284	10-Sep-12 A	13-Sep-12 A	100%	18-Jul-12	19-Jul-12															
1D-14V-SP2-624-D1	tNC 682 issued	0	10-Sep-12 A	10-Sep-12 A	100%																	
1D-14R-SP4-624	Traffic Signal Ducts	2	12-Sep-12 A	13-Sep-12 A	100%	18-Jul-12	19-Jul-12															
<b>Lighting Ducts</b>		326	10-Sep-12 A	11-Jan-13	88.35%	02-Aug-12	21-Aug-12															
1D-14V-SP2-625-D1	tNC 682 issued	0	10-Sep-12 A	10-Sep-12 A	100%																	
1D-14R-SP4-625	Lighting Ducts	14	20-Nov-12	11-Jan-13	0%	02-Aug-12	21-Aug-12															
<b>Installation of IMU Drains and Cable Ducting</b>		4	27-Aug-12 A	21-Sep-12 A	100%	18-Jul-12	23-Jul-12															
1D-14R-SP4-632	Installation of IMU Drains and Cable Ducting	4	27-Aug-12 A	21-Sep-12 A	100%	18-Jul-12	23-Jul-12															
<b>Drains</b>		23	17-Aug-12 A	02-Nov-12	95.7%	27-Jun-12	17-Jul-12															
1D-14R-SP4-621	Drainage to Discharge Points	14	17-Aug-12 A	31-Aug-12 A	100%	28-Jun-12	17-Jul-12															
1D-14R-SP4-620	Outfall Connections	1	01-Nov-12	02-Nov-12	0%	27-Jun-12	27-Jun-12															
<b>Outfall Connections</b>		0			0%																	
<b>Drainage to Discharge Points</b>		0			0%																	
<b>Shandwick Place Tram Stop</b>		79	02-Nov-12	21-Feb-13	0%	18-Jul-12	03-Oct-12															
1D-14R-SP4-646	Ducting and Chambers	15	02-Nov-12	23-Nov-12	0%	18-Jul-12	07-Aug-12															
1D-14R-SP4-647	Tramstop Platform	40	23-Nov-12	21-Feb-13	0%	08-Aug-12	02-Oct-12															
1D-14R-SP4-648	Deliver and Install Tramstop Shelter (tba)	0	21-Feb-13		0%	03-Oct-12																
<b>Pavement Construction over tracks</b>		24	11-Feb-13	15-Mar-13	0%	26-Sep-12	29-Oct-12															
1D-14R-SP4-1020	Concrete Upstand	12	11-Feb-13	27-Feb-13	0%	26-Sep-12	11-Oct-12															
1D-14R-SP4-841	Setts	10	14-Feb-13	28-Feb-13	0%	01-Oct-12	12-Oct-12															
1D-14R-SP4-802	Sealant to Rail Joint & Concrete Upstand	4	11-Mar-13	15-Mar-13	0%	24-Oct-12	29-Oct-12															

Date	Revision	Checked	Approved	Date	Revision	Checked	Approved
02-Feb...	Revision 0	SCS/M...	BSC	28-Jun-11	Revision 3a	SCS/MHE	BSC
16-Feb...	Revision 1	SCS/M...	BSC	08-Sep-11	Revision 4	SCS	BSC
18-Feb...	Revision 2	SCS/M...	BSC	16-Feb-12	Revision 4c	SCS	BBS
06-Ma...	Revision 3	SCS/M...	BSC	21-Jun-12	Revision 5c	SCS	BBS
				25-Oct-12	Rev. 5c Progressed to 121013	SCS	BBS

- Remaining Level of Effort
- Critical Remaining Work
- Changed Works
- Revision 5c
- Actual Work
- Remaining Work
- Rev 5c Milestone
- Milestone
- Changed Works
- Summary

# EDINBURGH TRAM NETWORK

Activity ID	Activity Name	Original Duration	Start	Finish	Duration % Complete	Rev 5c Start	Rev 5c Finish	2012														
								Jan	Feb	Mar	Apr	May	Jun	Jul	Aug	Sep	Oct	Nov	Dec			
<b>Phase SP4 Carriageway Construction</b>		370	10-Sep-12 A	14-Mar-13	74.33%	16-Jul-12	26-Oct-12															
1D-14R-SP4-844	Sub-base 220mm all carriageway areas	4	01-Nov-12	07-Nov-12	0%	16-Jul-12	19-Jul-12															
1D-14R-SP4-895	Kerbing - Eastbound/Westbound K7	9	07-Nov-12	20-Nov-12	0%	20-Jul-12	01-Aug-12															
1D-14R-SP4-868	Sub-base shape all carriageway areas	6	13-Nov-12	21-Nov-12	0%	26-Jul-12	02-Aug-12															
1D-14R-SP4-866	Gullies	3	16-Nov-12	21-Nov-12	0%	31-Jul-12	02-Aug-12															
1D-14R-SP4-861	Footpath Works	0	21-Nov-12		0%	03-Aug-12																
1D-14R-SP4-822	225mm Base - Nearsides Lanes only	5	21-Nov-12	28-Nov-12	0%	03-Aug-12	09-Aug-12															
1D-14R-SP4-843	Kerbing - Tramstop K7/K11	14	11-Feb-13	01-Mar-13	0%	26-Sep-12	15-Oct-12															
1D-14R-SP4-854	Setted Area	18	18-Feb-13	14-Mar-13	0%	03-Oct-12	26-Oct-12															
1D-14R-SP4-905	225mm Base	2	01-Mar-13	05-Mar-13	0%	16-Oct-12	17-Oct-12															
1D-14R-SP4-876	60mm Binder	2	05-Mar-13	07-Mar-13	0%	18-Oct-12	19-Oct-12															
1D-14R-SP4-857	35mm Wearing Course	2	07-Mar-13	11-Mar-13	0%	22-Oct-12	23-Oct-12															
<b>Traffic Signals</b>		290	10-Sep-12 A	22-Nov-12	99.31%	02-Aug-12	03-Aug-12															
1D-14V-SP2-849-D1	tNC 682 issued	0	10-Sep-12 A	10-Sep-12 A	100%																	
1D-14R-SP4-849	Traffic Signals	2	20-Nov-12	22-Nov-12	0%	02-Aug-12	03-Aug-12															
<b>Finishes</b>		288	10-Sep-12 A	20-Nov-12	97.57%	24-Jul-12	02-Aug-12															
<b>Signs / Street Furniture</b>		286	10-Sep-12 A	16-Nov-12	98.25%	24-Jul-12	30-Jul-12															
1D-14V-SP2-847-D1	tNC 682 issued	0	10-Sep-12 A	10-Sep-12 A	100%																	
1D-14R-SP4-847	Signs / Street Furniture	5	09-Nov-12	16-Nov-12	0%	24-Jul-12	30-Jul-12															
<b>Pedestrian Guard Rail</b>		288	10-Sep-12 A	20-Nov-12	100%	02-Aug-12	02-Aug-12															
1D-14V-SP2-1040-D1	tNC 682 issued	0	10-Sep-12 A	10-Sep-12 A	100%																	
1D-14R-SP4-1040	Pedestrian Guardrails	0	20-Nov-12		0%	02-Aug-12																
<b>Phase SP5 - Outbound Ch.130,850 - 130,813 (Palmerston Place - Crescen</b>		45	14-Mar-12 A	17-Jun-13	11.21%	07-Jan-13	27-Feb-13															
<b>Excavation &amp; Track Construction</b>		45	14-Mar-12 A	17-Jun-13	11.21%	07-Jan-13	27-Feb-13															
<b>Excavation</b>		4	22-Apr-13	26-Apr-13	0%	07-Jan-13	10-Jan-13															
1D-14W-SP5-709	Plane Main Carriageway 250mm	1	22-Apr-13	23-Apr-13	0%	07-Jan-13	07-Jan-13															
1D-14W-SP5-738	Excavate to Formation for Carriageway and Track (incl for Capping/Type 1)	2	23-Apr-13	25-Apr-13	0%	08-Jan-13	09-Jan-13															
1D-14W-SP5-719	Remove existing kerbs	2	23-Apr-13	25-Apr-13	0%	08-Jan-13	09-Jan-13															
1D-14W-SP5-940	Check suitability of formation (ongoing)	0	23-Apr-13		0%	08-Jan-13																
1D-14W-SP5-741	Capping Layer to Adjacent Carriageway (600mm)	1	24-Apr-13	25-Apr-13	0%	09-Jan-13	09-Jan-13															
1D-14W-SP5-722	Make good Formation with Type 1 (Ave 220mm)	1	25-Apr-13	26-Apr-13	0%	10-Jan-13	10-Jan-13															
<b>Plane</b>		0			0%																	
<b>Excavate</b>		0			0%																	
<b>Remove Kerbs</b>		0			0%																	
<b>Suitability of Formation</b>		0			0%																	
<b>Capping Layer</b>		0			0%																	
<b>Make Good Formation</b>		0			0%																	
<b>OLE Foundations</b>		2	14-Mar-12 A	04-Apr-12 A	100%	07-Jan-13	08-Jan-13															
1D-14W-SP5-727	Core/Cast OLE Pole Foundations	2	14-Mar-12 A	04-Apr-12 A	100%	07-Jan-13	08-Jan-13															
<b>Trackform</b>		3	29-Apr-13	02-May-13	0%	14-Jan-13	16-Jan-13															
1D-14W-SP5-754	Carry out inspection and testing of Subgrade	1	29-Apr-13	30-Apr-13	0%	14-Jan-13	14-Jan-13															
1D-14W-SP5-805	Blinding Concrete	1	30-Apr-13	01-May-13	0%	15-Jan-13	15-Jan-13															
1D-14W-SP5-756	250mm RC Improvement Slab (+ cure lag)	1	01-May-13	02-May-13	0%	16-Jan-13	16-Jan-13															
<b>Inspection &amp; Testing of Sub Grade</b>		0			0%																	
<b>Blinding</b>		0			0%																	

Date	Revision	Checked	Approved	Date	Revision	Checked	Approved
02-Feb...	Revision 0	SCS/M...	BSC	28-Jun-11	Revision 3a	SCS/MHE	BSC
16-Feb...	Revision 1	SCS/M...	BSC	08-Sep-11	Revision 4	SCS	BSC
18-Feb...	Revision 2	SCS/M...	BSC	16-Feb-12	Revision 4c	SCS	BBS
06-Ma...	Revision 3	SCS/M...	BSC	21-Jun-12	Revision 5c	SCS	BBS
				25-Oct-12	Rev. 5c Progressed to 121013	SCS	BBS

- Remaining Level of Effort
- Changed Works
- Revision 5c
- Actual Work
- Remaining Work
- Critical Remaining Work
- Rev 5c Milestone
- Milestone
- Changed Works
- Summary

# EDINBURGH TRAM NETWORK

Activity ID	Activity Name	Original Duration	Start	Finish	Duration % Complete	Rev 5c Start	Rev 5c Finish	2012												
								Jan	Feb	Mar	Apr	May	Jun	Jul	Aug	Sep	Oct	Nov	Dec	
<b>Place RC Improvement Slab</b>		0			0%															
<b>Track Laying</b>		24	14-May-13	17-Jun-13	0%	28-Jan-13	27-Feb-13													
1D-14W-SP5-737	Access for Track Laying	0	14-May-13		0%	28-Jan-13														
1D-14W-SP5-748	Installation of Noise & Vibration Mat (if reqd)	0	14-May-13		0%	28-Jan-13														
1D-14W-TRCK-70(3)	Set track (1x36m)(sleepers/rail) + mob	6	14-May-13	22-May-13	0%	28-Jan-13	04-Feb-13													
1D-14W-SP5-950	Welding & Grinding	2	15-May-13	17-May-13	0%	29-Jan-13	30-Jan-13													
1D-14W-SP5-751	Drainage / Rail Connections	2	15-May-13	17-May-13	0%	29-Jan-13	30-Jan-13													
1D-14W-SP5-732	Installation of IMU Boxes and Loops	2	15-May-13	17-May-13	0%	29-Jan-13	30-Jan-13													
1D-14W-SP5-733	Final Rail Alignment - Check and Approve	2	16-May-13	20-May-13	0%	30-Jan-13	31-Jan-13													
1D-14W-SP5-784	230mm Concrete Supporting Layer (+ cure lag)	2	20-May-13	22-May-13	0%	01-Feb-13	04-Feb-13													
1D-14W-SP5-786	Mill Rail Joint / Sealing Compound	5	10-Jun-13	17-Jun-13	0%	21-Feb-13	27-Feb-13													
<b>Drainage &amp; Ducts</b>		11	08-May-12 A	08-May-13	0%	07-Jan-13	21-Jan-13													
<b>Ducts</b>		10	23-Apr-13	08-May-13	0%	10-Jan-13	21-Jan-13													
1D-14W-SP5-795	Traffic Signal Ducts	0	23-Apr-13		0%	14-Jan-13														
1D-14W-SP5-713	Traction Ducts & Chambers	3	25-Apr-13	30-Apr-13	0%	10-Jan-13	14-Jan-13													
1D-14W-SP5-744	Comms Ducts & Chambers	0	25-Apr-13		0%	10-Jan-13														
1D-14W-SP5-723	Installation of IMU Drains and Cable Ducting	1	26-Apr-13	29-Apr-13	0%	11-Jan-13	11-Jan-13													
1D-14W-SP5-746	Lighting Ducts	2	03-May-13	08-May-13	0%	18-Jan-13	21-Jan-13													
<b>Traction Ducts</b>		0			0%															
<b>Comms Ducts</b>		0			0%															
<b>Traffic Signal Ducts</b>		0			0%															
<b>Lighting Ducts</b>		0			0%															
<b>Installation of IMU Drains and Cable Ducting</b>		0			0%															
<b>Drains</b>		5	08-May-12 A	23-Apr-13	85%	07-Jan-13	11-Jan-13													
1D-14W-SP5-731	Outfall Connections	2	08-May-12 A	18-Jul-12 A	100%	07-Jan-13	08-Jan-13													
1D-14W-SP5-712	Drainage to Discharge Points	3	08-May-12 A	23-Apr-13	75%	09-Jan-13	11-Jan-13													
<b>Outfall Connections</b>		0			0%															
<b>Drainage to Discharge Points</b>		0			0%															
<b>Pavement Construction over tracks</b>		13	22-May-13	10-Jun-13	0%	05-Feb-13	20-Feb-13													
1D-14W-SP5-846	Concrete Upstand	4	22-May-13	29-May-13	0%	05-Feb-13	08-Feb-13													
1D-14W-SP5-838	Sealant to Concrete Upstand	1	07-Jun-13	10-Jun-13	0%	20-Feb-13	20-Feb-13													
<b>Crescent</b>		16	01-May-13	23-May-13	0%	16-Jan-13	05-Feb-13													
1D-14W-SP5-1030	Excavate existing junction	1	01-May-13	02-May-13	0%	16-Jan-13	16-Jan-13													
1D-14W-SP5-851	Kerbing	10	03-May-13	20-May-13	0%	18-Jan-13	31-Jan-13													
1D-14W-SP5-812	Setted Area	6	10-May-13	20-May-13	0%	24-Jan-13	31-Jan-13													
1D-14W-SP5-823	Footpath	3	20-May-13	23-May-13	0%	01-Feb-13	05-Feb-13													
<b>Phase SP5 Carriageway Construction (incl crescent)</b>		36	25-Apr-13	14-Jun-13	0%	10-Jan-13	26-Feb-13													
1D-14W-SP5-845	Sub-base 220mm all carriageway areas	4	25-Apr-13	01-May-13	0%	10-Jan-13	15-Jan-13													
1D-14W-SP5-816	Kerbing - Eastbound/Islands/Crossings	2	01-May-13	03-May-13	0%	16-Jan-13	17-Jan-13													
1D-14W-SP5-787	Gullies	2	02-May-13	07-May-13	0%	17-Jan-13	18-Jan-13													
1D-14W-SP5-779	Sub-base shape all carriageway areas	1	03-May-13	07-May-13	0%	18-Jan-13	18-Jan-13													
1D-14W-SP5-980	Traffic Signals	0	03-May-13		0%	18-Jan-13														
1D-14W-SP5-791	Footpath Works	10	03-May-13	20-May-13	0%	18-Jan-13	31-Jan-13													
1D-14W-SP5-762	225mm Base	1	13-May-13	14-May-13	0%	25-Jan-13	25-Jan-13													
1D-14W-SP5-783	60mm Binder	1	05-Jun-13	06-Jun-13	0%	18-Feb-13	18-Feb-13													
1D-14W-SP5-824	35mm Wearing Course	1	06-Jun-13	07-Jun-13	0%	19-Feb-13	19-Feb-13													

Date	Revision	Checked	Approved	Date	Revision	Checked	Approved
02-Feb...	Revision 0	SCS/M...	BSC	28-Jun-11	Revision 3a	SCS/MHE	BSC
16-Feb...	Revision 1	SCS/M...	BSC	08-Sep-11	Revision 4	SCS	BSC
18-Feb...	Revision 2	SCS/M...	BSC	16-Feb-12	Revision 4c	SCS	BBS
06-Ma...	Revision 3	SCS/M...	BSC	21-Jun-12	Revision 5c	SCS	BBS
				25-Oct-12	Rev. 5c Progressed to 121013	SCS	BBS

- Remaining Level of Effort
- Changed Works
- Revision 5c
- Actual Work
- Remaining Work
- Critical Remaining Work
- Rev 5c Milestone
- Milestone
- Changed Works
- Summary

# EDINBURGH TRAM NETWORK

Activity ID	Activity Name	Original Duration	Start	Finish	Duration % Complete	Rev 5c Start	Rev 5c Finish	2012											
								Jan	Feb	Mar	Apr	May	Jun	Jul	Aug	Sep	Oct	Nov	Dec
<b>Finishes</b>		30	03-May-13	14-Jun-13	0%	18-Jan-13	26-Feb-13												
1D-14W-SP5-798	Signs / Street Furniture	5	03-May-13	13-May-13	0%	18-Jan-13	24-Jan-13												
1D-14W-SP5-815	Road Signs and Markings	5	07-Jun-13	14-Jun-13	0%	20-Feb-13	26-Feb-13												
<b>Phase SP6 - Inbound Ch.130,960 – 130,813 (Palmerston Place – Crescents)</b>		500	13-Mar-12 A	12-Sep-13	87.4%	28-Feb-13	10-Jun-13												
<b>Excavation &amp; Track Construction</b>		485	13-Mar-12 A	22-Aug-13	90.52%	28-Feb-13	17-May-13												
<b>Excavation</b>		448	13-May-12 A	14-Jun-12 A	100%	28-Feb-13	08-Mar-13												
<b>Plane</b>		2	29-May-12 A	14-Jun-12 A	100%	28-Feb-13	01-Mar-13												
1D-14X-SP6-878	Plane Main Carriageway 250mm	2	29-May-12 A	14-Jun-12 A	100%	28-Feb-13	01-Mar-13												
<b>Excavate</b>		438	13-May-12 A	14-Jun-12 A	100%	04-Mar-13	07-Mar-13												
1D-14X-SP6-D1	TT take possession of SP6 to prove ducting trench	0	13-May-12 A	14-Jun-12 A	100%														
1D-14X-SP6-888	Excavate to Formation for Carriageway and Track (incl for Capping/Type 1)	4	31-May-12 A	14-Jun-12 A	100%	04-Mar-13	07-Mar-13												
<b>Remove Kerbs</b>		4	13-Jun-12 A	13-Jun-12 A	100%	04-Mar-13	07-Mar-13												
1D-14X-SP6-859	Remove existing kerbs	4	13-Jun-12 A	13-Jun-12 A	100%	04-Mar-13	07-Mar-13												
<b>Suitability of Formation</b>		426	13-May-12 A	14-Jun-12 A	100%	04-Mar-13	04-Mar-13												
1D-14X-SP6-1050	Check suitability of formation (ongoing)	0	13-May-12 A		100%	04-Mar-13													
1D-14X-SP6-D2	TT take possession of SP6 to prove ducting trench	0	13-May-12 A	14-Jun-12 A	100%														
<b>Capping Layer</b>		447	13-May-12 A	14-Jun-12 A	100%	05-Mar-13	07-Mar-13												
1D-14X-SP6-D3	TT take possession of SP6 to prove ducting trench	0	13-May-12 A	14-Jun-12 A	100%														
1D-14X-SP6-871	Capping Layer to Adjacent Carriageway (600mm)	3	13-Jun-12 A	13-Jun-12 A	100%	05-Mar-13	07-Mar-13												
<b>Make Good Formation</b>		1	13-Jun-12 A	13-Jun-12 A	100%	08-Mar-13	08-Mar-13												
1D-14X-SP6-832	Make good Formation with Type 1 (Ave 220mm)	1	13-Jun-12 A	13-Jun-12 A	100%	08-Mar-13	08-Mar-13												
<b>OLE Foundations</b>		39	13-Mar-12 A	02-Aug-13	92.32%	28-Feb-13	26-Apr-13												
1D-14X-SP6-886	Core/Cast OLE Pole Foundations	3	13-Mar-12 A	04-Apr-12 A	100%	28-Feb-13	04-Mar-13												
1D-14X-SP6-877	OLE Wall Fixings Inbound	3	30-Jul-13	02-Aug-13	0%	24-Apr-13	26-Apr-13												
<b>Trackform</b>		8	23-Jul-12 A	20-Jun-13	80%	13-Mar-13	22-Mar-13												
1D-14X-SP6-864	Carry out inspection and testing of Subgrade	1	23-Jul-12 A	19-Jun-13	80%	13-Mar-13	13-Mar-13												
1D-14X-SP6-915	Blinding Concrete	2	25-Jul-12 A	19-Jun-13	80%	14-Mar-13	15-Mar-13												
1D-14X-SP6-896	250mm RC Improvement Slab (+ cure lag)	5	30-Jul-12 A	20-Jun-13	80%	18-Mar-13	22-Mar-13												
<b>Inspection &amp; Testing of Sub Grade</b>		0			0%														
<b>Blinding</b>		0			0%														
<b>Place RC Improvement Slab</b>		0			0%														
<b>Track Laying</b>		25	11-Oct-12 A	22-Aug-13	0%	11-Apr-13	17-May-13												
1D-14X-SP6-887	Access for Track Laying	0	11-Oct-12 A		100%	11-Apr-13													
1D-14X-TRCK-70(3)	Set track (1x144m)(sleepers/rail) + mob	8	11-Oct-12 A	29-Jul-13	10%	11-Apr-13	22-Apr-13												
1D-14X-SP6-898	Installation of Noise & Vibration Mat (if reqd)	0	18-Jul-13		0%	11-Apr-13													
1D-14X-SP6-1060	Welding & Grinding	4	18-Jul-13	24-Jul-13	0%	12-Apr-13	17-Apr-13												
1D-14X-SP6-881	Drainage / Rail Connections	4	18-Jul-13	24-Jul-13	0%	12-Apr-13	17-Apr-13												
1D-14X-SP6-842	Installation of IMU Boxes and Loops	4	18-Jul-13	24-Jul-13	0%	12-Apr-13	17-Apr-13												
1D-14X-SP6-863	Final Rail Alignment - Check and Approve	4	19-Jul-13	25-Jul-13	0%	15-Apr-13	18-Apr-13												
1D-14X-SP6-874	230mm Concrete Supporting Layer (+ cure lag)	5	23-Jul-13	30-Jul-13	0%	17-Apr-13	23-Apr-13												
1D-14X-SP6-852	Mill Rail Joint / Sealing Compound	3	19-Aug-13	22-Aug-13	0%	15-May-13	17-May-13												
<b>Drainage &amp; Ducts</b>		15	19-Jul-12 A	08-Jul-13	0%	28-Feb-13	28-Mar-13												
<b>Ducts</b>		15	19-Jul-12 A	08-Jul-13	0%	08-Mar-13	28-Mar-13												
1D-14X-SP6-933	Comms Ducts & Chambers	7	19-Jul-12 A	17-Jun-13	90%	08-Mar-13	18-Mar-13												
1D-14X-SP6-853	Installation of IMU Drains and Cable Ducting	2	17-Jun-13	19-Jun-13	0%	11-Mar-13	12-Mar-13												

Date	Revision	Checked	Approved	Date	Revision	Checked	Approved
02-Feb...	Revision 0	SCS/M...	BSC	28-Jun-11	Revision 3a	SCS/MHE	BSC
16-Feb...	Revision 1	SCS/M...	BSC	08-Sep-11	Revision 4	SCS	BSC
18-Feb...	Revision 2	SCS/M...	BSC	16-Feb-12	Revision 4c	SCS	BBS
06-Ma...	Revision 3	SCS/M...	BSC	21-Jun-12	Revision 5c	SCS	BBS
				25-Oct-12	Rev. 5c Progressed to 121013	SCS	BBS

- Remaining Level of Effort
- Changed Works
- Revision 5c
- Actual Work
- Remaining Work
- Critical Remaining Work
- Rev 5c Milestone
- Milestone
- Changed Works
- Summary



# EDINBURGH TRAM NETWORK

Activity ID	Activity Name	Original Duration	Start	Finish	Duration % Complete	Rev 5c Start	Rev 5c Finish	2012													
								Jan	Feb	Mar	Apr	May	Jun	Jul	Aug	Sep	Oct	Nov	Dec		
1D-14X-SP6-922	Traction Ducts & Chambers	7	17-Jun-13	26-Jun-13	0%	08-Mar-13	18-Mar-13														
1D-14X-SP6-944	Traffic Signal Ducts	4	27-Jun-13	03-Jul-13	0%	13-Mar-13	18-Mar-13														
1D-14X-SP6-975	Lighting Ducts	2	04-Jul-13	08-Jul-13	0%	27-Mar-13	28-Mar-13														
<b>Traction Ducts</b>		0			0%																
<b>Comms Ducts</b>		0			0%																
<b>Traffic Signal Ducts</b>		0			0%																
<b>Lighting Ducts</b>		0			0%																
<b>Installation of IMU Drains and Cable Ducting</b>		0			0%																
<b>Drains</b>		8	17-Jun-13	27-Jun-13	0%	28-Feb-13	12-Mar-13														
1D-14X-SP6-1120	Outfall Connections	1	17-Jun-13	18-Jun-13	0%	28-Feb-13	28-Feb-13														
1D-14X-SP6-951	Drainage to Discharge Points	7	18-Jun-13	27-Jun-13	0%	04-Mar-13	12-Mar-13														
<b>Outfall Connections</b>		0			0%																
<b>Drainage to Discharge Points</b>		0			0%																
<b>Pavement Construction over tracks</b>		14	30-Jul-13	19-Aug-13	0%	24-Apr-13	14-May-13														
1D-14X-SP6-856	Concrete Upstand	5	30-Jul-13	06-Aug-13	0%	24-Apr-13	30-Apr-13														
1D-14X-SP6-858	Sealant to Concret Upstand	2	15-Aug-13	19-Aug-13	0%	13-May-13	14-May-13														
<b>Phase SP6 Carriageway Construction (incl crescent)</b>		63	17-Jun-13	12-Sep-13	0%	08-Mar-13	10-Jun-13														
1D-14X-SP6-990	Sub-base 220mm all carriageway areas	4	17-Jun-13	21-Jun-13	0%	08-Mar-13	13-Mar-13														
1D-14X-SP6-801	Kerbing - Eastbound/Islands/Crossings	9	21-Jun-13	04-Jul-13	0%	14-Mar-13	26-Mar-13														
1D-14X-SP6-834	Sub-base shape all carriageway areas	4	01-Jul-13	05-Jul-13	0%	22-Mar-13	27-Mar-13														
1D-14X-SP6-782	Gullies	2	03-Jul-13	05-Jul-13	0%	26-Mar-13	27-Mar-13														
1D-14X-SP6-855	Traffic Signals	10	04-Jul-13	18-Jul-13	0%	27-Mar-13	10-Apr-13														
1D-14X-SP6-826	Footpath Works	11	04-Jul-13	19-Jul-13	0%	27-Mar-13	11-Apr-13														
1D-14X-SP6-797	225mm Base	2	16-Jul-13	18-Jul-13	0%	09-Apr-13	10-Apr-13														
1D-14X-SP6-808	60mm Binder	1	13-Aug-13	14-Aug-13	0%	09-May-13	09-May-13														
1D-14X-SP6-799	35mm Wearing Course	1	14-Aug-13	15-Aug-13	0%	10-May-13	10-May-13														
1D-14X-SP6-1000	Finishes to Crescents	20	15-Aug-13	12-Sep-13	0%	13-May-13	10-Jun-13														
<b>Finishes</b>		42	25-Jun-13	22-Aug-13	0%	18-Mar-13	17-May-13														
1D-14X-SP6-793	Signs / Street Furniture	5	25-Jun-13	02-Jul-13	0%	18-Mar-13	22-Mar-13														
1D-14X-SP6-811	Road Signs and Markings	5	15-Aug-13	22-Aug-13	0%	13-May-13	17-May-13														
<b>Phase SP7 - Outbound Ch.130,660 (East Atholl Crescent)</b>		20	12-Sep-13	10-Oct-13	0%	11-Jun-13	08-Jul-13														
1D-14-SP7-769	Make good Formation with Type 1	1	26-Sep-13	27-Sep-13	0%	25-Jun-13	25-Jun-13														
1D-14-SP7-776	Traffic Signals	5	26-Sep-13	03-Oct-13	0%	25-Jun-13	01-Jul-13														
1D-14-SP7-800	Carry out inspection and testing of Subgrade	0	27-Sep-13		0%	26-Jun-13															
<b>Drainage &amp; Ducts</b>		8	16-Sep-13	26-Sep-13	0%	13-Jun-13	24-Jun-13														
<b>Ducts</b>		2	24-Sep-13	26-Sep-13	0%	21-Jun-13	24-Jun-13														
1D-14-SP7-767	Traffic Signal Ducts	2	24-Sep-13	26-Sep-13	0%	21-Jun-13	24-Jun-13														
1D-14-SP7-768	Lighting Ducts	2	24-Sep-13	26-Sep-13	0%	21-Jun-13	24-Jun-13														
<b>Drains</b>		6	16-Sep-13	24-Sep-13	0%	13-Jun-13	20-Jun-13														
1D-14-SP7-765	Outfall Connections	2	16-Sep-13	18-Sep-13	0%	13-Jun-13	14-Jun-13														
1D-14-SP7-766	Drainage to Discharge Points	4	18-Sep-13	24-Sep-13	0%	17-Jun-13	20-Jun-13														
<b>Crescent</b>		20	12-Sep-13	10-Oct-13	0%	11-Jun-13	08-Jul-13														
1D-14-SP7-772	Excavate existing junction	2	12-Sep-13	16-Sep-13	0%	11-Jun-13	12-Jun-13														
1D-14-SP7-773	Kerbing	10	16-Sep-13	30-Sep-13	0%	13-Jun-13	26-Jun-13														
1D-14-SP7-774	Settled Area	6	27-Sep-13	07-Oct-13	0%	26-Jun-13	03-Jul-13														
1D-14-SP7-775	Footpath	3	07-Oct-13	10-Oct-13	0%	04-Jul-13	08-Jul-13														

Date	Revision	Checked	Approved	Date	Revision	Checked	Approved
02-Feb...	Revision 0	SCS/M...	BSC	28-Jun-11	Revision 3a	SCS/MHE	BSC
16-Feb...	Revision 1	SCS/M...	BSC	08-Sep-11	Revision 4	SCS	BSC
18-Feb...	Revision 2	SCS/M...	BSC	16-Feb-12	Revision 4c	SCS	BBS
06-Ma...	Revision 3	SCS/M...	BSC	21-Jun-12	Revision 5c	SCS	BBS
				25-Oct-12	Rev. 5c Progressed to 121013	SCS	BBS

- Remaining Level of Effort
- Critical Remaining Work
- Changed Works
- Revision 5c
- Actual Work
- Remaining Work
- Rev 5c Milestone
- Milestone
- Changed Works
- Summary

Activity ID	Activity Name	Original Duration	Start	Finish	Duration % Complete	Rev 5c Start	Rev 5c Finish	2012														
								Jan	Feb	Mar	Apr	May	Jun	Jul	Aug	Sep	Oct	Nov	Dec			
<b>Haymarket Ch.131.250 - 131.050</b>		454	31-Mar-11 A	28-Jun-13	59.45%	12-Sep-11	27-Mar-13															
<b>Constraints / Procedures / Documentation / Approvals</b>		15	26-Aug-11 A	01-Sep-11 A	100%	12-Sep-11	03-Oct-11															
1D-14-H-210	Prepare Method Statements & Risk Assessment	0	26-Aug-11 A		100%	12-Sep-11																
1D-14-H-220	Stakeholder Notifications (including Traffic Management)	0	26-Aug-11 A		100%	12-Sep-11																
1D-14-H-230	Apply for 3rd Party Licence	0	26-Aug-11 A		100%	12-Sep-11																
1D-14-H-240	Request Permit to Commence Work	0	01-Sep-11 A		100%	03-Oct-11																
1D-14-H-250	Request TTRO's	0	01-Sep-11 A		100%	26-Sep-11																
<b>Phase H1 - Main Area - Eastbound Side</b>		331	31-Mar-11 A	08-Jan-13	81.52%	12-Oct-11	04-Apr-12															
<b>Site Clearance</b>		191	04-Oct-11 A	13-Dec-11 A	100%	13-Oct-11	14-Oct-11															
1D-14CD-H1-662	Site Clearance & Site Compound	1	04-Oct-11 A	13-Dec-11 A	100%	13-Oct-11	14-Oct-11															
1D-14CD-H1-D1	DELAY TO ELECTRICAL DISCONNECTIONS	1	11-Oct-11 A	02-Nov-11 A	100%																	
1D-14CD-H1-D2	DELAY TO REMOVAL & STORE BUS SHELTER	0	01-Nov-11 A	02-Dec-11 A	100%																	
1D-14CD-H1-D17	DELAY TO REMOVAL OF BUS SHELTER MOBILISE CLEARWATER	0	02-Nov-11 A	13-Dec-11 A	100%																	
<b>Pedestrian Barrier</b>		2	01-Oct-11 A	01-Oct-11 A	100%	12-Oct-11	14-Oct-11															
1D-14CD-H1-661	Erect Pedestrian Barrier	2	01-Oct-11 A	01-Oct-11 A	100%	12-Oct-11	14-Oct-11															
<b>Excavation &amp; Track Construction</b>		331	31-Mar-11 A	08-Jan-13	81.52%	14-Oct-11	04-Apr-12															
<b>Excavation</b>		272	03-Oct-11 A	17-Oct-12	99.26%	14-Oct-11	11-Nov-11															
<b>Plane</b>		192	03-Oct-11 A	15-Oct-12	100%	14-Oct-11	18-Oct-11															
1D-14CD-H1-D3	ADDITIONAL WORKS - TRIAL HOLES - PW TNC 13C/13E	5	03-Oct-11 A	24-Oct-11 A	100%																	
1D-14CD-H1-D4	McNICOLAS WORKING ON OLE UTILITIES IN CLIFTON TERRACE PAVEMENT	5	20-Oct-11 A	02-Nov-11 A	100%																	
1D-14CD-H1-663	Plane Main Carriageway Area - south of access lane over voids	2	02-Nov-11 A	04-Nov-11 A	100%	14-Oct-11	18-Oct-11															
1D-14CD-H1-D5	BT FIBRE OPTICS TO BE SLEWED	5	02-Nov-11 A	10-Nov-11 A	100%																	
1D-14CD-H1-D6	BT FIBRE OPTICS ROUTE CHANGED	0	10-Nov-11 A	01-Dec-11 A	100%																	
1D-14CD-H1-D18	H1 Handed over to TT for BT diversion	0	11-Nov-11 A	21-Nov-11 A	100%																	
1D-14CD-H1-D19	H1 Handed over to BBUK after BT slewed	0	21-Nov-11 A	01-Dec-11 A	100%																	
1D-14CD-H1-D25	Piling to OLE bases required	0	21-Nov-11 A	16-Jan-12 A	100%																	
1D-14CD-H1-D20	Area of footpath containing OLE bases handed back to TT on Friday the 25th.	0	25-Nov-11 A	30-Nov-11 A	100%																	
1D-14CD-H1-D21	TT retain possession of 4 OLE bases in H1	0	30-Nov-11 A	08-Dec-11 A	100%																	
1D-14CD-H1-D22	Diversion of HV cable from footpath	0	01-Dec-11 A	07-Dec-11 A	100%																	
1D-14CD-H1-D23	Access required to install protection to services for piling activities	0	05-Dec-11 A	09-Dec-11 A	100%																	
1D-14CD-H1-D24	Access to footpath required for TT for repair of virgin media ducting and construction of chambers	0	09-Dec-11 A	13-Dec-11 A	100%																	
1D-14CD-H1-D74	Piling of OLE Bases	0	09-Jan-12 A	16-Jan-12 A	100%																	
1D-14CD-H1-D75	Clifton Terrace Void	0	17-Jan-12 A	03-Feb-12 A	100%																	
1D-14CD-H1-D113	Awaiting detail of value engineering og carriageway construction	0	03-Mar-12 A	20-Apr-12 A	100%																	
1D-14CD-H1-D201	Out of Sequence Working	0	20-Apr-12 A	15-Oct-12	0%																	
1D-14CD-H1-D202	T&T in possession of Carriageway south of track	0	12-Sep-12 A	25-Sep-12 A	100%																	
1D-14CD-H1-D208	T&T in possession of Carriageway north of track	0	25-Sep-12 A	15-Oct-12	0%																	
<b>Plane (Remaining Area)</b>		272	21-Oct-11 A	17-Oct-12	99.26%	09-Nov-11	11-Nov-11															
1D-14CD-H1-D101	Piling to OLE bases required	5	21-Oct-11 A	16-Jan-12 A	100%																	

Date	Revision	Checked	Approved	Date	Revision	Checked	Approved
02-Feb...	Revision 0	SCS/M...	BSC	28-Jun-11	Revision 3a	SCS/MHE	BSC
16-Feb...	Revision 1	SCS/M...	BSC	08-Sep-11	Revision 4	SCS	BSC
18-Feb...	Revision 2	SCS/M...	BSC	16-Feb-12	Revision 4c	SCS	BBS
06-Ma...	Revision 3	SCS/M...	BSC	21-Jun-12	Revision 5c	SCS	BBS
				25-Oct-12	Rev. 5c Progressed to 121013	SCS	BBS

Remaining Level of Effort	Critical Remaining Work
Changed Works	Rev 5c Milestone
Revision 5c	Milestone
Actual Work	Changed Works
Remaining Work	Summary

Activity ID	Activity Name	Original Duration	Start	Finish	Duration % Complete	Rev 5c Start	Rev 5c Finish	2012											
								Jan	Feb	Mar	Apr	May	Jun	Jul	Aug	Sep	Oct	Nov	Dec
1D-14CD-H1-D147	Carriageway Value Engineering	0	02-Nov-11 A	20-Apr-12 A	100%			Carriageway Value Engineering											
1D-14CD-H1-D102	Clifton Terrace Void	0	09-Nov-11 A	03-Feb-12 A	100%			Clifton Terrace Void											
1D-14CD-H1-D167	Out of sequence working	0	17-Jan-12 A	15-Oct-12	0%			Out of sequence working											
1D-14CD-H1-D148	TT have possession of H1 for trial holes	0	02-Mar-12 A	20-Mar-12 A	100%			TT have possession of H1 for trial holes											
1D-14CD-H1-D149	TT retain 50% of H1 for trial holes	0	20-Mar-12 A	28-Mar-12 A	100%			TT retain 50% of H1 for trial holes											
1D-14CD-H1-D150	TT take possession of 100% of H1	0	28-Mar-12 A	21-May-12 A	100%			TT take possession of 100% of H1											
1D-14CD-H1-D168	TT retain possession of H1 at Grosvenor Street	0	21-May-12 A	25-Jun-12 A	100%			TT retain possession of H1 at Grosvenor Street											
1D-14CD-H1-D215	TT in possession of area north of inbound track	0	25-Sep-12 A	15-Oct-12	0%			TT in possession of area north of inbound track											
1D-14CD-H1-D216	TT in possession of H6	0	04-Oct-12 A	15-Oct-12	0%			TT in possession of H6											
1D-14CD-H1-671	Plane out existing surfacing over remainder of Phase 1	2	15-Oct-12	17-Oct-12	0%	09-Nov-11	11-Nov-11	Plane out existing surfacing											
<b>OLE Foundations</b>		199	11-Oct-11 A	04-Apr-12 A	100%	18-Oct-11	27-Oct-11	04-Apr-12 A, OLE Foundations											
1D-14CD-H1-880	Core/Cast OLE Pole Foundations	7	11-Oct-11 A	02-Mar-12 A	100%	18-Oct-11	27-Oct-11	Core/Cast OLE Pole Foundations											
1D-14CD-H1-D7	LOCATE UTILITIES IN OLE FOUNDATIONS	5	11-Oct-11 A	19-Oct-11 A	100%			LOCATE UTILITIES IN OLE FOUNDATIONS											
1D-14CD-H1-D8	AREA HANDED OVER TO TT FOR UTILITIES WORKS	5	20-Oct-11 A	02-Nov-11 A	100%			AREA HANDED OVER TO TT FOR UTILITIES WORKS											
1D-14CD-H1-D9	PILING DESIGN SOLUTION	5	26-Oct-11 A	08-Nov-11 A	100%			PILING DESIGN SOLUTION											
1D-14CD-H1-D10	PROCURE PILING SUBCONTRACTOR	0	09-Nov-11 A	21-Nov-11 A	100%			PROCURE PILING SUBCONTRACTOR											
1D-14CD-H1-D26	H1 Handed over to BBUK after BT slewed	0	21-Nov-11 A	01-Dec-11 A	100%			H1 Handed over to BBUK after BT slewed											
1D-14CD-H1-D77	Piling of OLE Bases Required	0	21-Nov-11 A	16-Jan-12 A	100%			Piling of OLE Bases Required											
1D-14CD-H1-D27	Area of footpath containing OLE bases handed back to TT on Friday the 25th.	0	25-Nov-11 A	30-Nov-11 A	100%			Area of footpath containing OLE bases handed back to TT on Friday the 25th.											
1D-14CD-H1-D28	TT retain possession of 4 OLE bases in H1	0	30-Nov-11 A	08-Dec-11 A	100%			TT retain possession of 4 OLE bases in H1											
1D-14CD-H1-D29	No IFC coordinates issued for Pile locations OLE 204B,182B,196B	0	30-Nov-11 A	07-Dec-11 A	100%			No IFC coordinates issued for Pile locations OLE 204B,182B,196B											
1D-14CD-H1-D30	11 Kva cable diversion	0	01-Dec-11 A	07-Dec-11 A	100%			11 Kva cable diversion											
1D-14CD-H1-D31	Installation of service protection for piling operation	0	05-Dec-11 A	09-Dec-11 A	100%			Installation of service protection for piling operation											
1D-14CD-H1-D32	OLE 204B watermain found at pile location	0	07-Dec-11 A	09-Dec-11 A	100%			OLE 204B watermain found at pile location											
1D-14CD-H1-D76	Awaiting Plinth Coordinates (utilities)	0	07-Dec-11 A	01-Feb-12 A	100%			Awaiting Plinth Coordinates (utilities)											
1D-14CD-H1-D33	Reinstatement of footpath	0	12-Dec-11 A	19-Dec-11 A	100%			Reinstatement of footpath											
1D-14CD-H1-D103	Breaking Down Piles For OLE Bases	0	03-Jan-12 A	08-Feb-12 A	100%			Breaking Down Piles For OLE Bases											
1D-14CD-H1-D78	Piling of OLE Bases	0	09-Jan-12 A	16-Jan-12 A	100%			Piling of OLE Bases											
1D-14CD-H1-D80	Breaking Down Piles For OLE Bases	0	17-Jan-12 A	23-Jan-12 A	100%			Breaking Down Piles For OLE Bases											
1D-14CD-H1-D79	Pile Cap Design Revised	0	18-Jan-12 A	18-Jan-12 A	100%			Pile Cap Design Revised											
1D-14CD-H1-D90	Delivery of New Reinforcement	0	19-Jan-12 A	01-Feb-12 A	100%			Delivery of New Reinforcement											
1D-14CD-H1-D104	Access to OLE 128,149	0	10-Feb-12 A	24-Feb-12 A	100%			Access to OLE 128,149											
1D-14CD-H1-D115	OLE 100B	0	29-Feb-12 A	04-Apr-12 A	100%			OLE 100B											
1D-14CD-H1-D114	Reinstate Footpath	0	09-Mar-12 A	09-Mar-12 A	100%			Reinstate Footpath											
1D-14CD-H1-D116	OLE 100B	0	14-Mar-12 A	29-Mar-12 A	100%			OLE 100B											
<b>Phase 1/1 - Outbound Track</b>		257	31-Mar-11 A	18-Oct-12	98.76%	11-Nov-11	10-Feb-12	18-Oct-12, Phase 1/1 - C											
<b>Excavation</b>		214	21-Oct-11 A	18-Oct-12	98.5%	11-Nov-11	17-Nov-11	18-Oct-12, Excavation											
<b>Excavate</b>		213	21-Oct-11 A	18-Oct-12	98.5%	11-Nov-11	16-Nov-11	18-Oct-12, Excavate											
1D-14CD-H1-D105	Piling to OLE bases required	5	21-Oct-11 A	16-Jan-12 A	100%			Piling to OLE bases required											
1D-14CD-H1-D145	Carriageway Value Engineering	0	02-Nov-11 A	20-Apr-12 A	100%			Carriageway Value Engineering											
1D-14CD-H1-D151	Carriageway Value Engineering	0	02-Nov-11 A	20-Apr-12 A	100%			Carriageway Value Engineering											
1D-14CD-H1-D106	Clifton Terrace Void	0	09-Nov-11 A	03-Feb-12 A	100%			Clifton Terrace Void											
1D-14CD-H1-D61	H1 Handed over to TT for BT diversion	5	11-Nov-11 A	21-Nov-11 A	100%			H1 Handed over to TT for BT diversion											
1D-14CD-H1-D62	H1 Handed over to BBUK after BT slewed	5	21-Nov-11 A	01-Dec-11 A	100%			H1 Handed over to BBUK after BT slewed											
1D-14CD-H1-D63	Piling to OLE bases required	5	21-Nov-11 A	16-Jan-12 A	100%			Piling to OLE bases required											

Date	Revision	Checked	Approved	Date	Revision	Checked	Approved
02-Feb...	Revision 0	SCS/M...	BSC	28-Jun-11	Revision 3a	SCS/MHE	BSC
16-Feb...	Revision 1	SCS/M...	BSC	08-Sep-11	Revision 4	SCS	BSC
18-Feb...	Revision 2	SCS/M...	BSC	16-Feb-12	Revision 4c	SCS	BBS
06-Ma...	Revision 3	SCS/M...	BSC	21-Jun-12	Revision 5c	SCS	BBS
				25-Oct-12	Rev. 5c Progressed to 121013	SCS	BBS

- █ Remaining Level of Effort
- █ Critical Remaining Work
- Changed Works
- Revision 5c
- Actual Work
- Remaining Work
- ◆ Rev 5c Milestone
- ◆ Milestone
- ◆ Changed Works
- ▶ Summary

# EDINBURGH TRAM NETWORK

Activity ID	Activity Name	Original Duration	Start	Finish	Duration % Complete	Rev 5c Start	Rev 5c Finish	2012											
								Jan	Feb	Mar	Apr	May	Jun	Jul	Aug	Sep	Oct	Nov	Dec
1D-14CD-H1-D97	Clifton Terrace Void	0	17-Jan-12 A	03-Feb-12 A	100%			[Gantt bar: Clifton Terrace Void, 17-Jan-12 to 03-Feb-12]											
1D-14CD-H1-D169	Out of sequence working	0	17-Jan-12 A	15-Oct-12	0%			[Gantt bar: Out of sequence working, 17-Jan-12 to 15-Oct-12]											
1D-14CD-H1-D144	Drainage redesign	0	31-Jan-12 A	20-Mar-12 A	100%			[Gantt bar: Drainage redesign, 31-Jan-12 to 20-Mar-12]											
1D-14C-H1-902	Excavate to Formation for Carriageway and Track (incl for Capping/Type 1)	3	02-Feb-12 A	18-Oct-12	60%	11-Nov-11	16-Nov-11	[Gantt bar: Excavate to Formation for Carriageway and Track, 02-Feb-12 to 18-Oct-12]											
1D-14CD-H1-D111	Excavate to formation for Track	0	02-Feb-12 A	09-Feb-12 A	100%			[Gantt bar: Excavate to formation for Track, 02-Feb-12 to 09-Feb-12]											
1D-14CD-H1-D109	Cable & Wireless Utility in Excavation	0	03-Feb-12 A	08-Feb-12 A	100%			[Gantt bar: Cable & Wireless Utility in Excavation, 03-Feb-12 to 08-Feb-12]											
1D-14CD-H1-D110	BT Duct in Excavation	0	03-Feb-12 A	08-Feb-12 A	100%			[Gantt bar: BT Duct in Excavation, 03-Feb-12 to 08-Feb-12]											
1D-14CD-H1-D112	Traffic Signal Cables in excavation	0	09-Feb-12 A	10-Feb-12 A	100%			[Gantt bar: Traffic Signal Cables in excavation, 09-Feb-12 to 10-Feb-12]											
1D-14CD-H1-D143	Subbase to available area	0	13-Feb-12 A	15-Feb-12 A	100%			[Gantt bar: Subbase to available area, 13-Feb-12 to 15-Feb-12]											
1D-14CD-H1-D140	TT have possession of H1 for trial holes	0	02-Mar-12 A	20-Mar-12 A	100%			[Gantt bar: TT have possession of H1 for trial holes, 02-Mar-12 to 20-Mar-12]											
1D-14CD-H1-D152	TT have possession of H1 for trial holes	0	02-Mar-12 A	20-Mar-12 A	100%			[Gantt bar: TT have possession of H1 for trial holes, 02-Mar-12 to 20-Mar-12]											
1D-14CD-H1-D141	TT retain 50% of H1 for trial holes	0	20-Mar-12 A	28-Mar-12 A	100%			[Gantt bar: TT retain 50% of H1 for trial holes, 20-Mar-12 to 28-Mar-12]											
1D-14CD-H1-D153	TT retain 50% of H1 for trial holes	0	20-Mar-12 A	28-Mar-12 A	100%			[Gantt bar: TT retain 50% of H1 for trial holes, 20-Mar-12 to 28-Mar-12]											
1D-14CD-H1-D142	TT take possession of 100% of H1	0	28-Mar-12 A	21-May-12 A	100%			[Gantt bar: TT take possession of 100% of H1, 28-Mar-12 to 21-May-12]											
1D-14CD-H1-D154	TT take possession of 100% of H1	0	28-Mar-12 A	21-May-12 A	100%			[Gantt bar: TT take possession of 100% of H1, 28-Mar-12 to 21-May-12]											
1D-14CD-H1-D163	Out of sequence working	0	20-Apr-12 A	15-Oct-12	0%			[Gantt bar: Out of sequence working, 20-Apr-12 to 15-Oct-12]											
1D-14CD-H1-D158	TT retain possession of east end of H1 to complete drainage works	0	21-May-12 A	25-Jun-12 A	100%			[Gantt bar: TT retain possession of east end of H1 to complete drainage works, 21-May-12 to 25-Jun-12]											
1D-14CD-H1-D170	TT retain possession of H1 at Grosvenor Street	0	21-May-12 A	25-Jun-12 A	100%			[Gantt bar: TT retain possession of H1 at Grosvenor Street, 21-May-12 to 25-Jun-12]											
1D-14CD-H1-D205	TT in possession of carriageway south of track	0	12-Sep-12 A	25-Sep-12 A	100%			[Gantt bar: TT in possession of carriageway south of track, 12-Sep-12 to 25-Sep-12]											
1D-14CD-H1-D214	TT in possession of carriageway north of track	0	25-Sep-12 A	15-Oct-12	0%			[Gantt bar: TT in possession of carriageway north of track, 25-Sep-12 to 15-Oct-12]											
Remove Kerbs		0			0%														
Suitability of Formation		0	10-Feb-12 A	10-Feb-12 A	0%	11-Nov-11	11-Nov-11	[Milestone: 10-Feb-12 A, Suitability of Formation]											
1D-14C-H1-913	Check suitability of formation (ongoing)	0	10-Feb-12 A		100%	11-Nov-11		[Gantt bar: Check suitability of formation (ongoing), 10-Feb-12 to 11-Nov-11]											
Capping Layer		213	02-Nov-11 A	20-Apr-12 A	100%	14-Nov-11	16-Nov-11	[Milestone: 20-Apr-12 A, Capping Layer]											
1D-14CD-H1-D146	Carriageway Value Engineering	0	02-Nov-11 A	20-Apr-12 A	100%			[Gantt bar: Carriageway Value Engineering, 02-Nov-11 to 20-Apr-12]											
1D-14CD-H1-D64	H1 Handed over to TT for BT diversion	5	11-Nov-11 A	21-Nov-11 A	100%			[Gantt bar: H1 Handed over to TT for BT diversion, 11-Nov-11 to 21-Nov-11]											
1D-14CD-H1-D65	H1 Handed over to BBUK after BT slewed	5	21-Nov-11 A	01-Dec-11 A	100%			[Gantt bar: H1 Handed over to BBUK after BT slewed, 21-Nov-11 to 01-Dec-11]											
1D-14CD-H1-D66	Piling to OLE bases required	5	21-Nov-11 A	16-Jan-12 A	100%			[Gantt bar: Piling to OLE bases required, 21-Nov-11 to 16-Jan-12]											
1D-14CD-H1-D98	Clifton Terrace Void	0	17-Jan-12 A	03-Feb-12 A	100%			[Gantt bar: Clifton Terrace Void, 17-Jan-12 to 03-Feb-12]											
1D-14C-H1-924	Capping Layer to Adjacent Carriageway (600mm)	2	13-Feb-12 A	13-Feb-12 A	100%	14-Nov-11	16-Nov-11	[Milestone: 13-Feb-12 A, Capping Layer to Adjacent Carriageway (600mm)]											
Make Good Formation		1	13-Feb-12 A	06-Jul-12 A	100%	16-Nov-11	17-Nov-11	[Milestone: 06-Jul-12 A, Make Good Formation]											
1D-14C-H1-945	Make good Formation with Type 1 (Ave 220mm)	1	13-Feb-12 A	06-Jul-12 A	100%	16-Nov-11	17-Nov-11	[Gantt bar: Make good Formation with Type 1 (Ave 220mm), 13-Feb-12 to 06-Jul-12]											
Trackform		212	21-Nov-11 A	15-Oct-12	100%	18-Nov-11	25-Nov-11	[Milestone: 15-Oct-12, Trackform]											
Inspection & Testing of Sub Grade		1	10-Jul-12 A	10-Jul-12 A	100%	18-Nov-11	21-Nov-11	[Milestone: 10-Jul-12 A, Inspection & Testing of Sub Grade]											
1D-14C-H1-927	Carry out inspection and testing of Subgrade	1	10-Jul-12 A	10-Jul-12 A	100%	18-Nov-11	21-Nov-11	[Gantt bar: Carry out inspection and testing of Subgrade, 10-Jul-12 to 10-Jul-12]											
Blinding		208	21-Nov-11 A	15-Oct-12	100%	21-Nov-11	22-Nov-11	[Milestone: 15-Oct-12, Blinding]											
1D-14CD-H1-D70	H1 Handed over to BBUK after BT slewed	5	21-Nov-11 A	01-Dec-11 A	100%			[Gantt bar: H1 Handed over to BBUK after BT slewed, 21-Nov-11 to 01-Dec-11]											
1D-14CD-H1-D71	Piling to OLE bases required	5	21-Nov-11 A	16-Jan-12 A	100%			[Gantt bar: Piling to OLE bases required, 21-Nov-11 to 16-Jan-12]											
1D-14CD-H1-D166	TT retain possession of Grosvenor Square area of H1	5	21-May-12 A	25-Jun-12 A	100%			[Gantt bar: TT retain possession of Grosvenor Square area of H1, 21-May-12 to 25-Jun-12]											
1D-14CD-H1-D177	Out of Sequence Working	5	25-Jun-12 A	15-Oct-12	100%			[Gantt bar: Out of Sequence Working, 25-Jun-12 to 15-Oct-12]											
1D-14CD-H1-D178	TT take possession of area adjacent to Grahams Si	5	25-Jun-12 A	06-Jul-12 A	100%			[Gantt bar: TT take possession of area adjacent to Grahams Site, 25-Jun-12 to 06-Jul-12]											
1D-14CD-H1-D179	TT Retain Grosvenor Street	5	25-Jun-12 A	11-Jul-12 A	100%			[Gantt bar: TT Retain Grosvenor Street, 25-Jun-12 to 11-Jul-12]											
1D-14CD-H1-D180	Services within Traction Ducts excavation	5	11-Jul-12 A	12-Jul-12 A	100%			[Gantt bar: Services within Traction Ducts excavation, 11-Jul-12 to 12-Jul-12]											
1D-14C-H1-938	Blinding Concrete	1	12-Jul-12 A	18-Jul-12 A	100%	21-Nov-11	22-Nov-11	[Milestone: 12-Jul-12 A, Blinding Concrete]											

Date	Revision	Checked	Approved	Date	Revision	Checked	Approved
02-Feb...	Revision 0	SCS/M...	BSC	28-Jun-11	Revision 3a	SCS/MHE	BSC
16-Feb...	Revision 1	SCS/M...	BSC	08-Sep-11	Revision 4	SCS	BSC
18-Feb...	Revision 2	SCS/M...	BSC	16-Feb-12	Revision 4c	SCS	BBS
06-Ma...	Revision 3	SCS/M...	BSC	21-Jun-12	Revision 5c	SCS	BBS
				25-Oct-12	Rev. 5c Progressed to 121013	SCS	BBS

- █ Remaining Level of Effort
- █ Changed Works
- Revision 5c
- Actual Work
- Remaining Work
- █ Critical Remaining Work
- ◆ Rev 5c Milestone
- ◆ Milestone
- ◆ Changed Works
- Summary

Activity ID	Activity Name	Original Duration	Start	Finish	Duration % Complete	Rev 5c Start	Rev 5c Finish	2012											
								Jan	Feb	Mar	Apr	May	Jun	Jul	Aug	Sep	Oct	Nov	Dec
<b>Place RC Improvement Slab</b>		212	21-Nov-11 A	20-Jul-12 A	100%	22-Nov-11	25-Nov-11	20-Jul-12 A, Place RC Improvement Slab											
1D-14CD-H1-D72	H1 Handed over to BBUK after BT slewed	5	21-Nov-11 A	01-Dec-11 A	100%			ed over to BBUK after BT slewed											
1D-14CD-H1-D73	Piling to OLE bases required	5	21-Nov-11 A	16-Jan-12 A	100%			Piling to OLE bases required											
1D-14C-H1-919	Place RC Improvement Slab (+ cure lag)	3	10-Jul-12 A	20-Jul-12 A	100%	22-Nov-11	25-Nov-11	Place RC Improvement Slab (+ cure lag)											
<b>Track Laying</b>		249	31-Mar-11 A	11-Sep-12 A	100%	03-Feb-12	10-Feb-12	11-Sep-12 A, Track Laying											
1D-14C-H1-941	Installation of Noise & Vibration Mat (if reqd)	0	31-Mar-11 A		100%	03-Feb-12		Installation of Noise & Vibration Mat											
1D-14C-H1-1110	Access for Track Laying	0	23-Aug-12 A		100%	03-Feb-12		Access for Track Laying											
1D-14C-TRCK-70(3)	Set staggered track (1x54m)(sleepers/rail)	4	27-Aug-12 A	30-Aug-12 A	100%	03-Feb-12	09-Feb-12	Set staggered track (1x54m)(sleepers/rail)											
1D-14C-H1-923	Welding & Grinding	2	27-Aug-12 A	30-Aug-12 A	100%	06-Feb-12	08-Feb-12	Welding & Grinding											
1D-14C-H1-955	Installation of IMU Boxes and Loops	2	28-Aug-12 A	30-Aug-12 A	100%	06-Feb-12	08-Feb-12	Installation of IMU Boxes and Loops											
1D-14C-H1-936	Final Rail Alignment - Check and Approve	2	28-Aug-12 A	07-Sep-12 A	100%	07-Feb-12	09-Feb-12	Final Rail Alignment - Check and Approve											
1D-14C-H1-934	Drainage / Rail Connections	2	28-Aug-12 A	29-Aug-12 A	100%	06-Feb-12	08-Feb-12	Drainage / Rail Connections											
<b>230mm Concrete Supporting Layer</b>		249	04-Sep-12 A	11-Sep-12 A	100%	08-Feb-12	10-Feb-12	11-Sep-12 A, 230mm Concrete Supporting Layer											
1D-14CD-H1-D100	tie in to 2A slab rescheduled	5	04-Sep-12 A	10-Sep-12 A	100%			tie in to 2A slab rescheduled											
1D-14C-H1-937	230mm Concrete Supporting Layer (incl cure lag)	2	10-Sep-12 A	11-Sep-12 A	100%	08-Feb-12	10-Feb-12	230mm Concrete Supporting Layer											
<b>Phase 1/2 - Inbound Track</b>		331	20-Apr-11 A	08-Jan-13	81.52%	09-Jan-12	04-Apr-12												
<b>Trackform</b>		230	21-May-12 A	15-Oct-12	100%	19-Jan-12	26-Jan-12	15-Oct-12, Trackform											
<b>Inspection &amp; Testing of Sub Grade</b>		1	17-Jul-12 A	17-Jul-12 A	100%	19-Jan-12	20-Jan-12	17-Jul-12 A, Inspection & Testing of Sub Grade											
1D-14D-H1-894	Carry out inspection and testing of Subgrade	1	17-Jul-12 A	17-Jul-12 A	100%	19-Jan-12	20-Jan-12	Carry out inspection and testing of Subgrade											
<b>Blinding</b>		228	21-May-12 A	15-Oct-12	100%	20-Jan-12	24-Jan-12	15-Oct-12, Blinding											
1D-14CD-H1-D174	TT retain possession of Grovenor Street junction	0	21-May-12 A	15-Oct-12	0%			TT retain possession of G											
1D-14D-H1-925	Blinding Concrete	2	25-Jun-12 A	18-Jul-12 A	100%	20-Jan-12	24-Jan-12	Blinding Concrete											
1D-14CD-H1-D181	TT take possession of area adjacent to Grahams Si	5	25-Jun-12 A	06-Jul-12 A	100%			TT take possession of area adjacent to Grahams Site											
1D-14CD-H1-D182	TT Retain Grosvenor Street	5	25-Jun-12 A	23-Jul-12 A	100%			TT Retain Grosvenor Street											
1D-14CD-H1-D184	Out of Sequence Working	5	25-Jun-12 A	12-Jul-12 A	100%			Out of Sequence Working											
1D-14CD-H1-D183	Services within Traction Ducts excavation	5	11-Jul-12 A	12-Jul-12 A	100%			Services within Traction Ducts excavation											
<b>Place RC Improvement Slab</b>		3	10-Jul-12 A	24-Jul-12 A	100%	23-Jan-12	26-Jan-12	24-Jul-12 A, Place RC Improvement Slab											
1D-14D-H1-906	Place RC Improvement Slab (+ cure lag)	3	10-Jul-12 A	24-Jul-12 A	100%	23-Jan-12	26-Jan-12	Place RC Improvement Slab (+ cure lag)											
<b>Excavation</b>		234	20-Apr-11 A	15-Oct-12	100%	09-Jan-12	17-Jan-12	15-Oct-12, Excavation											
<b>Plane</b>		0			0%														
<b>Excavate</b>		232	20-Apr-11 A	15-Oct-12	100%	09-Jan-12	13-Jan-12	15-Oct-12, Excavate											
1D-14CD-H1-D171	Out of sequence working	0	20-Apr-11 A	15-Oct-12	0%			Out of sequence working											
1D-14D-H1-889	Excavate to Formation for Carriageway and Track (incl for Capping/Type 1)	4	06-Feb-12 A	05-Jul-12 A	100%	09-Jan-12	13-Jan-12	Excavate to Formation for Carriageway and T											
1D-14CD-H1-D172	Excavation Continued by TT	0	28-Mar-12 A	21-May-12 A	100%			Excavation Continued by TT											
1D-14CD-H1-D173	TT retain possession of east end of H1	0	21-May-12 A	25-Jun-12 A	100%			TT retain possession of east end of H1											
1D-14CD-H1-889-D5	TT in possession north of inbound track	0	04-Oct-12 A	15-Oct-12	0%			TT in possession north of											
<b>Remove Kerbs</b>		0			0%														
<b>Suitability of Formation</b>		1	06-Feb-12 A	06-Feb-12 A	100%	09-Jan-12	10-Jan-12	06-Feb-12 A, Suitability of Formation											
1D-14D-H1-1080	Check suitability of formation (ongoing)	1	06-Feb-12 A	06-Feb-12 A	100%	09-Jan-12	10-Jan-12	Check suitability of formation (ongoing)											
<b>Capping Layer</b>		232	21-Oct-11 A	13-Feb-12 A	100%	10-Jan-12	13-Jan-12	13-Feb-12 A, Capping Layer											
1D-14CD-H1-D155	Piling to OLE Bases Required	0	21-Oct-11 A	16-Jan-12 A	100%			Piling to OLE Bases Required											
1D-14D-H1-901	Capping Layer to Adjacent Carriageway (600mm)	3	13-Feb-12 A	13-Feb-12 A	100%	10-Jan-12	13-Jan-12	Capping Layer to Adjacent Carriageway (600r											
<b>Make Good Formation</b>		2	13-Feb-12 A	17-Jul-12 A	100%	13-Jan-12	17-Jan-12	17-Jul-12 A, Make Good Formation											
1D-14D-H1-872	Make good Formation with Type 1 (Ave 220mm)	2	13-Feb-12 A	17-Jul-12 A	100%	13-Jan-12	17-Jan-12	Make good Formation with Type 1 (Ave 220r											
<b>Track Laying</b>		331	01-Aug-12 A	08-Jan-13	81.52%	03-Feb-12	04-Apr-12												

Date	Revision	Checked	Approved	Date	Revision	Checked	Approved
02-Feb...	Revision 0	SCS/M...	BSC	28-Jun-11	Revision 3a	SCS/MHE	BSC
16-Feb...	Revision 1	SCS/M...	BSC	08-Sep-11	Revision 4	SCS	BSC
18-Feb...	Revision 2	SCS/M...	BSC	16-Feb-12	Revision 4c	SCS	BBS
06-Ma...	Revision 3	SCS/M...	BSC	21-Jun-12	Revision 5c	SCS	BBS
				25-Oct-12	Rev. 5c Progressed to 121013	SCS	BBS

- █ Remaining Level of Effort
- █ Critical Remaining Work
- █ Changed Works
- ◆ Rev 5c Milestone
- Revision 5c
- ◆ Milestone
- Actual Work
- ◆ Changed Works
- Remaining Work
- ▶ Summary

Activity ID	Activity Name	Original Duration	Start	Finish	Duration % Complete	Rev 5c Start	Rev 5c Finish	2012													
								Jan	Feb	Mar	Apr	May	Jun	Jul	Aug	Sep	Oct	Nov	Dec		
1D-14D-H1-897	Access for Track Laying	0	19-Oct-12		0%	03-Feb-12															
1D-14D-H1-918	Installation of Noise & Vibration Mat (if reqd)	0	19-Oct-12		0%	03-Feb-12															
1D-14D-TRCK-70(3)	Set track (1x108m)(sleepers/rail)	5	19-Oct-12	26-Oct-12	0%	09-Feb-12	16-Feb-12														
1D-14D-H1-1090	Welding & Grinding	3	22-Oct-12	25-Oct-12	0%	10-Feb-12	15-Feb-12														
1D-14D-H1-911	Drainage/Rail Connections	3	22-Oct-12	25-Oct-12	0%	10-Feb-12	15-Feb-12														
1D-14D-H1-882	Installation of IMU Boxes and Loops	3	22-Oct-12	25-Oct-12	0%	10-Feb-12	15-Feb-12														
1D-14CD-H1-678	Mill Rail Joint / Sealing Compound	4	02-Jan-13	08-Jan-13	0%	29-Mar-12	04-Apr-12														
<b>230mm Concrete Supporting Layer</b>		282	01-Aug-12A	15-Oct-12	100%	15-Feb-12	21-Feb-12														
1D-14CD-H1-D206	Programme Logic	0	01-Aug-12A	15-Oct-12	0%																
1D-14D-H1-904	230mm Concrete Supporting Layer (incl cure lag)	4	30-Aug-12A	11-Sep-12 A	100%	15-Feb-12	21-Feb-12														
<b>Final Rail Alignment</b>		3	23-Oct-12	26-Oct-12	0%	13-Feb-12	16-Feb-12														
1D-14D-H1-893	Final Rail Alignment - Check and Approve	3	23-Oct-12	26-Oct-12	0%	13-Feb-12	16-Feb-12														
<b>Drainage &amp; Ducts</b>		275	03-Oct-11 A	13-Nov-12	92.18%	14-Oct-11	14-Mar-12														
1D-14CD-H1-603	Investigate services / outfall positions / inlet-outlet positions / levels	2	28-Oct-11 A	31-Oct-11 A	100%	14-Oct-11	18-Oct-11														
<b>Ducts</b>		275	11-Nov-11 A	13-Nov-12	92.18%	16-Nov-11	14-Mar-12														
<b>Traction Ducts</b>		228	21-Nov-11 A	12-Jul-12 A	100%	25-Nov-11	09-Jan-12														
1D-14CD-H1-D54	Piling to OLE bases required	0	21-Nov-11 A	16-Jan-12 A	100%																
1D-14CD-H1-D93	Piling to OLE	0	09-Jan-12 A	16-Jan-12 A	100%																
1D-14CD-H1-D94	Breaking down piles for OLE bases	0	17-Jan-12 A	23-Jan-12 A	100%																
1D-14CD-H1-D95	Clifton Terrace Void	0	17-Jan-12 A	03-Feb-12 A	100%																
1D-14CD-H1-D133	TT retain 50% of H1 for trial holes	0	20-Feb-12 A	28-Mar-12 A	100%																
1D-14CD-H1-D134	TT have possession of H1 for trial holes	0	02-Mar-12 A	20-Mar-12 A	100%																
1D-14CD-H1-D135	TT take possession of 100% of H1	0	28-Mar-12 A	21-May-12 A	100%																
1D-14CD-H1-D160	TT retain possession of east end of H1 to complete drainage works	0	21-May-12 A	25-Jun-12 A	100%																
1D-14CD-H1-666	Traction Ducts & Chambers	8	08-Jun-12 A	12-Jul-12 A	100%	25-Nov-11	09-Jan-12														
1D-14CD-H1-D161	Traction Ducts can commence due to resolution of comms ducts conflicts	0	08-Jun-12 A		100%																
1D-14CD-H1-D185	TT retain possession of Grosvenor St therefore cannot complete Traction Ducts	0	21-Jun-12 A	04-Jul-12 A	100%																
1D-14CD-H1-D186	Services under ramp at Haymarket Bar	0	10-Jul-12 A	12-Jul-12 A	100%																
<b>Comms Ducts</b>		247	02-Mar-12 A	15-Oct-12	100%	26-Jan-12	03-Feb-12														
1D-14CD-H1-D136	TT have possession of H1 for trial holes	0	02-Mar-12 A	20-Mar-12 A	100%																
1D-14CD-H1-D137	TT retain 50% of H1 for trial holes	0	20-Mar-12 A	28-Mar-12 A	100%																
1D-14CD-H1-D138	TT take possession of 100% of H1	0	28-Mar-12 A	21-May-12 A	100%																
1D-14CD-H1-D162	TT retain possession of Grosvenor St end of H1 to complete drainage works	0	21-May-12 A	28-Jun-12 A	100%																
1D-14CD-H1-657	Comms Ducts & Chambers	6	24-May-12 A	02-Jul-12 A	100%	26-Jan-12	03-Feb-12														
1D-14CD-H1-D164	Lagan Encounters services in duct run excavation	0	24-May-12 A	31-May-12 A	100%																
1D-14CD-H1-D165	Duct Bank Design ammended to avoid utilities	0	31-May-12 A	07-Jun-12 A	100%																
1D-14CD-H1-D204	TT in possession of carriageway	0	12-Sep-12 A	15-Oct-12	0%																
<b>Traffic Signal Ducts</b>		217	11-Nov-11 A	19-Oct-12	97.97%	16-Nov-11	22-Nov-11														
1D-14CD-H1-D46	H1 Handed over to TT for BT diversion	0	11-Nov-11 A	21-Nov-11 A	100%																
1D-14CD-H1-D47	Pile positions not yet IFC. Services still require relocation to allow piling	0	16-Nov-11 A	30-Nov-11 A	100%																
1D-14CD-H1-D48	Services exposed by TT still require backfilling and reinstatement of footpath	0	16-Nov-11 A	07-Dec-11 A	100%																

Date	Revision	Checked	Approved	Date	Revision	Checked	Approved
02-Feb...	Revision 0	SCS/M...	BSC	28-Jun-11	Revision 3a	SCS/MHE	BSC
16-Feb...	Revision 1	SCS/M...	BSC	08-Sep-11	Revision 4	SCS	BSC
18-Feb...	Revision 2	SCS/M...	BSC	16-Feb-12	Revision 4c	SCS	BBS
06-Ma...	Revision 3	SCS/M...	BSC	21-Jun-12	Revision 5c	SCS	BBS
				25-Oct-12	Rev. 5c Progressed to 121013	SCS	BBS

- Remaining Level of Effort
- Critical Remaining Work
- Changed Works
- ◆ Rev 5c Milestone
- Revision 5c
- ◆ Milestone
- Actual Work
- ◆ Changed Works
- Remaining Work
- Summary

Activity ID	Activity Name	Original Duration	Start	Finish	Duration % Complete	Rev 5c Start	Rev 5c Finish	2012											
								Jan	Feb	Mar	Apr	May	Jun	Jul	Aug	Sep	Oct	Nov	Dec
1D-14CD-H1-D53	Piling to OLE bases required	0	21-Nov-11 A	16-Jan-12 A	100%			Piling to OLE bases required											
1D-14CD-H1-D49	TT retain possession of 4 OLE bases in H1	0	30-Nov-11 A	07-Dec-11 A	100%			in possession of 4 OLE bases in H1											
1D-14CD-H1-D50	No IFC coordinates issued for Pile locations OLE 204B,182B,196B	0	30-Nov-11 A	08-Dec-11 A	100%			coordinates issued for Pile locations OLE 204B,182B,196B											
1D-14CD-H1-D51	11 Kva cable diversion	0	01-Dec-11 A	07-Dec-11 A	100%			cable diversion											
1D-14CD-H1-D52	Traffic signal ducts installed in footpath	0	12-Dec-11 A	14-Dec-11 A	100%			c signal ducts installed in footpath											
1D-14CD-H1-658	Traffic Signal Ducts	4	13-Dec-11 A	19-Oct-12	70%	16-Nov-11	22-Nov-11	Traffic Signal Ducts											
1D-14CD-H1-D89	Piling to OLE	0	09-Jan-12 A	16-Jan-12 A	100%			Piling to OLE											
1D-14CD-H1-D91	Breaking down piles for OLE bases	0	17-Jan-12 A	23-Jan-12 A	100%			Breaking down piles for OLE bases											
1D-14CD-H1-D92	Clifton Terrace Void	0	17-Jan-12 A	03-Feb-12 A	100%			Clifton Terrace Void											
1D-14CD-H1-D130	TT have possession of H1 for trial holes	0	02-Mar-12 A	20-Mar-12 A	100%			TT have possession of H1 for trial holes											
1D-14CD-H1-D131	TT retain 50% of H1 for trial holes	0	20-Mar-12 A	28-Mar-12 A	100%			TT retain 50% of H1 for trial holes											
1D-14CD-H1-D132	TT take possession of 100% of H1	0	28-Mar-12 A	21-May-12 A	100%			TT take possession of 100% of H1											
1D-14CD-H1-D159	TT retain possession of east end of H1 to complete drainage works	0	21-May-12 A	25-Jun-12 A	100%			TT retain possession of east end of H1 to complete drainage works											
1D-14CD-H1-D176	TT retain possession of Grosvenor Street	0	25-Jun-12 A	23-Jul-12 A	100%			TT retain possession of Grosvenor Street											
1D-14CD-H1-D209	tNC 682 issued	0	10-Sep-12 A	10-Sep-12 A	100%			tNC 682 issued											
1D-14CD-H1-D203	TT in possession of carriageway south of track	0	12-Sep-12 A	25-Sep-12 A	100%			TT in possession of carriageway south of track											
1D-14CD-H1-D210	TT in possession of carriageway north of track	0	25-Sep-12 A	15-Oct-12	0%			TT in possession of carriageway north of track											
<b>Lighting Ducts</b>		<b>275</b>	<b>12-Dec-11 A</b>	<b>13-Nov-12</b>	<b>92.18%</b>	<b>01-Mar-12</b>	<b>14-Mar-12</b>	<b>Lighting Ducts</b>											
1D-14CD-H1-649	Lighting Ducts	9	12-Dec-11 A	13-Nov-12	30%	01-Mar-12	14-Mar-12	Lighting Ducts											
1D-14CD-H1-D139	TT have possession of H1 for trial holes	0	02-Mar-12 A	20-Mar-12 A	100%			TT have possession of H1 for trial holes											
1D-14CD-H1-D187	TT retain 50% of H1 for trial holes	0	20-Mar-12 A	28-Mar-12 A	100%			TT retain 50% of H1 for trial holes											
1D-14CD-H1-D188	TT take possession of 100% of H1	0	28-Mar-12 A	21-May-12 A	100%			TT take possession of 100% of H1											
1D-14CD-H1-D189	TT retain possession of east end of H1 to complete drainage works	0	21-May-12 A	25-Jun-12 A	100%			TT retain possession of east end of H1 to complete drainage works											
1D-14CD-H1-D212	tNC 682 issued	0	10-Sep-12 A	10-Sep-12 A	100%			tNC 682 issued											
1D-14CD-H1-D211	TT in possession of carriageway south of tracks	0	12-Sep-12 A	25-Sep-12 A	100%			TT in possession of carriageway south of tracks											
1D-14CD-H1-D213	TT in possession of carriageway north of tracks	0	25-Sep-12 A	15-Oct-12	0%			TT in possession of carriageway north of tracks											
<b>Installation of IMU Drains and Cable Ducting</b>		<b>236</b>	<b>11-Nov-11 A</b>	<b>18-Jul-12 A</b>	<b>100%</b>	<b>17-Nov-11</b>	<b>19-Jan-12</b>	<b>Installation of IMU Drains and Cable Ducting</b>											
1D-14CD-H1-D67	H1 Handed over to TT for BT diversion	5	11-Nov-11 A	21-Nov-11 A	100%			H1 Handed over to TT for BT diversion											
1D-14CD-H1-D68	H1 Handed over to BBUK after BT slewed	5	21-Nov-11 A	01-Dec-11 A	100%			H1 Handed over to BBUK after BT slewed											
1D-14CD-H1-D69	Piling to OLE bases required	5	21-Nov-11 A	16-Jan-12 A	100%			Piling to OLE bases required											
1D-14CD-H1-D99	Clifton Terrace Void	0	17-Jan-12 A	03-Feb-12 A	100%			Clifton Terrace Void											
1D-14CD-H1-D190	TT take possession of 100% of H1	0	28-Mar-12 A	21-May-12 A	100%			TT take possession of 100% of H1											
1D-14CD-H1-D191	TT retain possession of east end of H1 to complete drainage works	0	21-May-12 A	25-Jun-12 A	100%			TT retain possession of east end of H1 to complete drainage works											
1D-14C-H1-926	Installation of IMU Drains and Cable Ducting	1	22-May-12 A	03-Jul-12 A	100%	17-Nov-11	18-Nov-11	Installation of IMU Drains and Cable Ducting											
1D-14D-H1-883	Installation of IMU Drains and Cable Ducting	2	22-May-12 A	03-Jul-12 A	100%	17-Jan-12	19-Jan-12	Installation of IMU Drains and Cable Ducting											
1D-14CD-H1-D192	Cannot complete due to TT possession	0	25-Jun-12 A	03-Jul-12 A	100%			Cannot complete due to TT possession											
1D-14CD-H1-D200	Out of Sequence Working	0	16-Jul-12 A	18-Jul-12 A	100%			Out of Sequence Working											
<b>Drains</b>		<b>220</b>	<b>03-Oct-11 A</b>	<b>27-Jul-12 A</b>	<b>100%</b>	<b>17-Oct-11</b>	<b>25-Nov-11</b>	<b>Drains</b>											
<b>Outfall Connections</b>		<b>197</b>	<b>03-Oct-11 A</b>	<b>27-Jul-12 A</b>	<b>100%</b>	<b>17-Oct-11</b>	<b>25-Oct-11</b>	<b>Outfall Connections</b>											
1D-14CD-H1-D11	ADDITIONAL WORKS - TRIAL HOLES - PW TNC 13C/13E	5	03-Oct-11 A	24-Oct-11 A	100%			ADDITIONAL WORKS - TRIAL HOLES - PW TNC 13C/13E											
1D-14CD-H1-D12	McNICOLAS WORKING ON OLE UTILITIES IN CLIFTON TERRACE PAVEMENT	5	20-Oct-11 A	02-Nov-11 A	100%			McNICOLAS WORKING ON OLE UTILITIES IN CLIFTON TERRACE PAVEMENT											
1D-14CD-H1-D13	BT FIBRE OPTICS TO BE SLEWED	5	02-Nov-11 A	21-Nov-11 A	100%			BT FIBRE OPTICS TO BE SLEWED											

Date	Revision	Checked	Approved	Date	Revision	Checked	Approved
02-Feb...	Revision 0	SCS/M...	BSC	28-Jun-11	Revision 3a	SCS/MHE	BSC
16-Feb...	Revision 1	SCS/M...	BSC	08-Sep-11	Revision 4	SCS	BSC
18-Feb...	Revision 2	SCS/M...	BSC	16-Feb-12	Revision 4c	SCS	BBS
06-Ma...	Revision 3	SCS/M...	BSC	21-Jun-12	Revision 5c	SCS	BBS
				25-Oct-12	Rev. 5c Progressed to 121013	SCS	BBS

■ Remaining Level of Effort     ■ Critical Remaining Work  
■ Changed Works     ◆ Rev 5c Milestone  
— Revision 5c     ◆ Milestone  
 Actual Work     ◆ Changed Works  
■ Remaining Work     ▶ Summary

Activity ID	Activity Name	Original Duration	Start	Finish	Duration % Complete	Rev 5c Start	Rev 5c Finish	2012											
								Jan	Feb	Mar	Apr	May	Jun	Jul	Aug	Sep	Oct	Nov	Dec
1D-14CD-H1-D38	Access to footpath required for TT for repair of virgin media ducting and construction of chambers	0	09-Nov-11 A	13-Dec-11 A	100%			Access to footpath required for TT for repair of virgin media ducting and construction of chambers											
1D-14CD-H1-D34	H1 Handed over to TT for BT diversion	0	11-Nov-11 A	21-Nov-11 A	100%			H1 Handed over to TT for BT diversion											
1D-14CD-H1-D35	H1 Handed over to BBUK after BT slewed	0	21-Nov-11 A	01-Dec-11 A	100%			H1 Handed over to BBUK after BT slewed											
1D-14CD-H1-D39	Piling to OLE bases required	0	21-Nov-11 A	16-Jan-12 A	100%			Piling to OLE bases required											
1D-14CD-H1-D84	Existing Manhole dimensions inadequate for internal back drop	0	28-Nov-11 A	01-Jul-12 A	100%			Existing Manhole dimensions inadequate for internal back drop											
1D-14CD-H1-D36	11 Kva cable diversion	0	01-Dec-11 A	07-Dec-11 A	100%			11 Kva cable diversion											
1D-14CD-H1-D37	Installation of service protection for piling operation	0	05-Dec-11 A	09-Dec-11 A	100%			Installation of service protection for piling operation											
1D-14CD-H1-D81	Piling to OLE	0	09-Jan-12 A	16-Jan-12 A	100%			Piling to OLE											
1D-14CD-H1-D82	Breaking down piles for OLE bases	0	17-Jan-12 A	23-Jan-12 A	100%			Breaking down piles for OLE bases											
1D-14CD-H1-D83	Clifton Terrace Void	0	17-Jan-12 A	03-Feb-12 A	100%			Clifton Terrace Void											
1D-14CD-H1-D117	Drainage Redesign	0	02-Mar-12 A	16-Apr-12 A	100%			Drainage Redesign											
1D-14CD-H1-D118	TT have possession of site for trial holes	0	02-Mar-12 A	20-Mar-12 A	100%			TT have possession of site for trial holes											
1D-14CD-H1-D119	TT have possession of 50% of site for trial holes	0	20-Mar-12 A	28-Mar-12 A	100%			TT have possession of 50% of site for trial holes											
1D-14CD-H1-D120	Details of scottish Water sewer connection	0	21-Mar-12 A	27-Jul-12 A	100%			Details of scottish Water sewer connection											
1D-14CD-H1-674	Outfall Connections	6	28-Mar-12 A	20-Jun-12 A	100%	17-Oct-11	25-Oct-11	Outfall Connections											
1D-14CD-H1-D121	TT retake possession of 100% of H1	0	28-Mar-12 A	21-May-12 A	100%			TT retake possession of 100% of H1											
1D-14CD-H1-D156	TT retain possession of east end of H1 to complete drainage works	0	21-May-12 A	25-Jun-12 A	100%			TT retain possession of east end of H1 to complete drainage works											
1D-14CD-H1-D175	TT retain possession of Grosvenor Street to complete works	0	25-Jun-12 A	23-Jul-12 A	100%			TT retain possession of Grosvenor Street to complete works											
<b>Drainage to Discharge Points</b>		<b>220</b>	<b>02-Nov-11 A</b>	<b>27-Jul-12 A</b>	<b>100%</b>	<b>09-Nov-11</b>	<b>25-Nov-11</b>	27-Jul-12 A, Drainage to Discharge Points											
1D-14CD-H1-D40	BT FIBRE OPTICS TO BE SLEWED	0	02-Nov-11 A	30-Nov-11 A	100%			BT FIBRE OPTICS TO BE SLEWED											
1D-14CD-H1-D41	H1 Handed over to TT for BT diversion	0	11-Nov-11 A	21-Nov-11 A	100%			H1 Handed over to TT for BT diversion											
1D-14CD-H1-D42	H1 Handed over to BBUK after BT slewed	0	21-Nov-11 A	01-Dec-11 A	100%			H1 Handed over to BBUK after BT slewed											
1D-14CD-H1-D43	Preparation for Piling to OLE bases	0	21-Nov-11 A	16-Jan-12 A	100%			Preparation for Piling to OLE bases											
1D-14CD-H1-D45	Piling to OLE bases required	0	21-Nov-11 A	16-Jan-12 A	100%			Piling to OLE bases required											
1D-14CD-H1-D44	11 Kva cable diversion	0	01-Dec-11 A	07-Dec-11 A	100%			11 Kva cable diversion											
1D-14CD-H1-D85	Piling to OLE	0	09-Jan-12 A	16-Jan-12 A	100%			Piling to OLE											
1D-14CD-H1-D86	Breaking down piles for OLE bases	0	17-Jan-12 A	23-Jan-12 A	100%			Breaking down piles for OLE bases											
1D-14CD-H1-D87	Clifton Terrace Void	0	17-Jan-12 A	03-Feb-12 A	100%			Clifton Terrace Void											
1D-14CD-H1-D88	MH 1D/04/03	0	31-Jan-12 A	28-Mar-12 A	100%			MH 1D/04/03											
1D-14CD-H1-D107	MH 1D/03/02	0	31-Jan-12 A	28-Mar-12 A	100%			MH 1D/03/02											
1D-14CD-H1-D108	MH 1D/05/01	0	31-Jan-12 A	28-Mar-12 A	100%			MH 1D/05/01											
1D-14CD-H1-D122	Drainage to discharge point	0	31-Jan-12 A	28-Mar-12 A	100%			Drainage to discharge point											
1D-14CD-H1-D123	Existing Gas Main	0	02-Feb-12 A	08-Feb-12 A	100%			Existing Gas Main											
1D-14CD-H1-685	Drainage to Discharge Points	12	10-Feb-12 A	27-Jul-12 A	100%	09-Nov-11	25-Nov-11	Drainage to Discharge Points											
1D-14CD-H1-D124	Drainage to be redesigned	0	02-Mar-12 A	28-Mar-12 A	100%			Drainage to be redesigned											
1D-14CD-H1-D125	TT have possession of H1 for trial holes	0	02-Mar-12 A	20-Mar-12 A	100%			TT have possession of H1 for trial holes											
1D-14CD-H1-D126	TT retain 50% of H1 for trial holes	0	20-Mar-12 A	28-Mar-12 A	100%			TT retain 50% of H1 for trial holes											
1D-14CD-H1-D127	MH on line of storm sewer	0	28-Mar-12 A	28-Mar-12 A	100%			MH on line of storm sewer											
1D-14CD-H1-D128	MH on line of storm sewer	0	28-Mar-12 A	28-Mar-12 A	100%			MH on line of storm sewer											
1D-14CD-H1-D129	TT take possession of 100% of H1	0	28-Mar-12 A	21-May-12 A	100%			TT take possession of 100% of H1											
1D-14CD-H1-D157	TT retain possession of east end of H1 to complete drainage works	0	21-May-12 A	25-Jun-12 A	100%			TT retain possession of east end of H1 to complete drainage works											
<b>Pavement Construction over tracks</b>		<b>292</b>	<b>10-Aug-12 A</b>	<b>02-Jan-13</b>	<b>80.42%</b>	<b>21-Feb-12</b>	<b>29-Mar-12</b>												
<b>Concrete Upstand</b>		<b>259</b>	<b>10-Aug-12 A</b>	<b>06-Nov-12</b>	<b>93.59%</b>	<b>21-Feb-12</b>	<b>08-Mar-12</b>	06-Nov-12, Concr											

Date	Revision	Checked	Approved	Date	Revision	Checked	Approved
02-Feb...	Revision 0	SCS/M...	BSC	28-Jun-11	Revision 3a	SCS/MHE	BSC
16-Feb...	Revision 1	SCS/M...	BSC	08-Sep-11	Revision 4	SCS	BSC
18-Feb...	Revision 2	SCS/M...	BSC	16-Feb-12	Revision 4c	SCS	BBS
06-Ma...	Revision 3	SCS/M...	BSC	21-Jun-12	Revision 5c	SCS	BBS
				25-Oct-12	Rev. 5c Progressed to 121013	SCS	BBS

- █ Remaining Level of Effort
- █ Critical Remaining Work
- Changed Works
- ◆ Rev 5c Milestone
- Revision 5c
- ◆ Milestone
- Actual Work
- ◆ Changed Works
- Remaining Work
- Summary



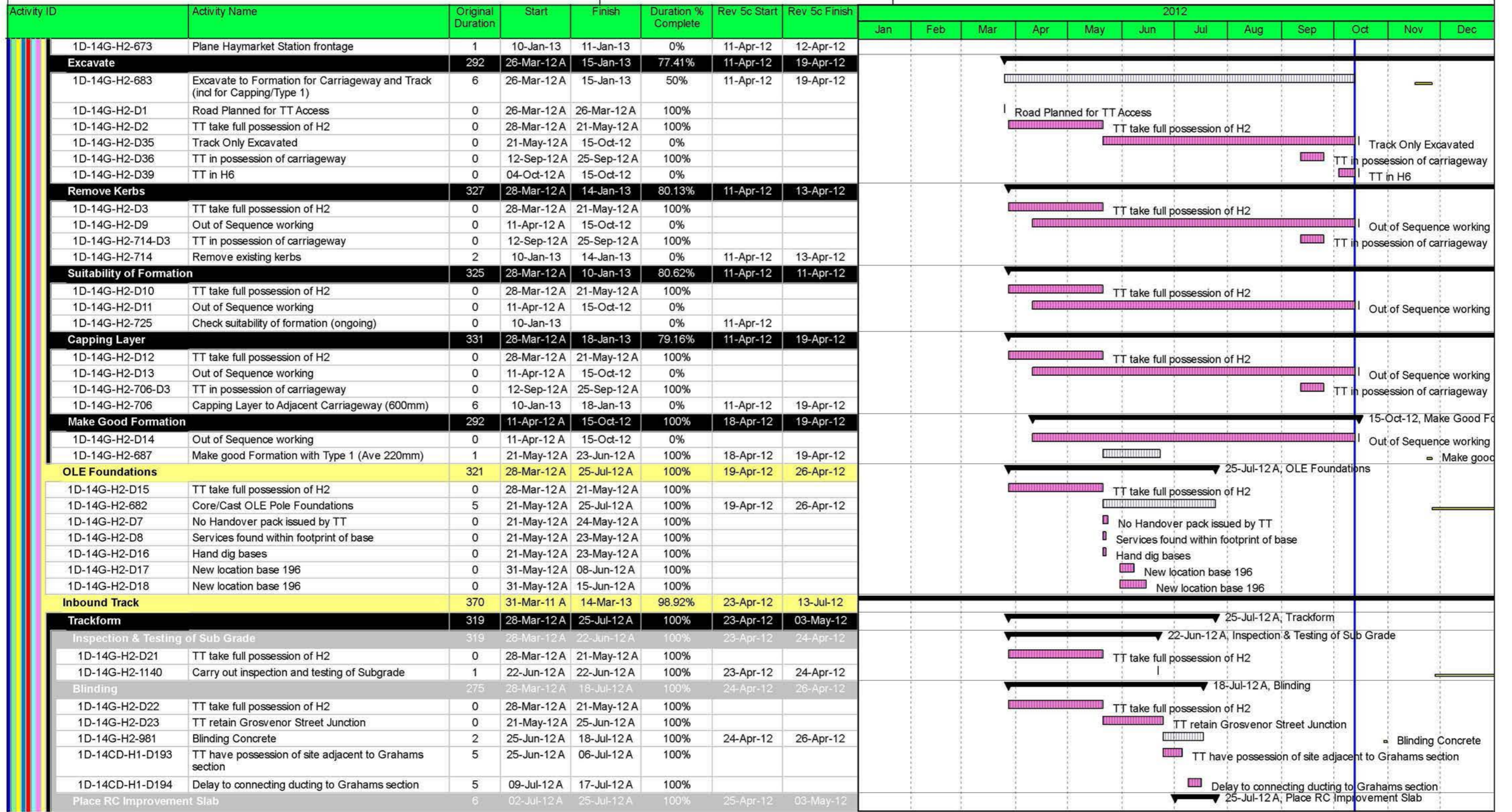
**EDINBURGH TRAM  
 NETWORK**

Activity ID	Activity Name	Original Duration	Start	Finish	Duration % Complete	Rev 5c Start	Rev 5c Finish	2012															
								Jan	Feb	Mar	Apr	May	Jun	Jul	Aug	Sep	Oct	Nov	Dec				
1D-14CD-H1-736-D2	Excavation of Carriageway	0	10-Aug-12 A	15-Oct-12	0%																		Excavation of Carriageway
1D-14CD-H1-736-D3	TT in possession of H6	0	04-Oct-12 A	15-Oct-12	0%																		TT in possession of H6
1D-14CD-H1-736	Concrete Upstand	12	11-Oct-12 A	06-Nov-12	30%	21-Feb-12	08-Mar-12																Concrete Upstand
<b>Sealant</b>		<b>26</b>	<b>27-Nov-12</b>	<b>02-Jan-13</b>	<b>0%</b>	<b>27-Mar-12</b>	<b>29-Mar-12</b>																
1D-14CD-H1-718	Sealant to Concrete Upstand	2	27-Nov-12	02-Jan-13	0%	27-Mar-12	29-Mar-12																
<b>Phase 1 Carriageway Construction</b>		<b>296</b>	<b>20-Apr-12 A</b>	<b>08-Jan-13</b>	<b>79.34%</b>	<b>21-Feb-12</b>	<b>03-Apr-12</b>																
1D-14CD-H1-701	Excavate Eastbound Lane to Formation (incl for Capping)	2	26-Oct-12	30-Oct-12	0%	22-Feb-12	24-Feb-12																Excavate Eastbound
1D-14CD-H1-692	Remove existing kerbs	2	26-Oct-12	30-Oct-12	0%	22-Feb-12	24-Feb-12																Remove existing kerbs
1D-14CD-H1-693	Check suitability of formation (ongoing)	0	26-Oct-12	30-Oct-12	0%	22-Feb-12	24-Feb-12																Check suitability of formation
1D-14CD-H1-724	Capping Layer to Eastbound Carriageway (600mm)	2	26-Oct-12	30-Oct-12	0%	22-Feb-12	24-Feb-12																Capping Layer to Eastbound
1D-14CD-H1-735	Sub-base 220mm all carriageway areas	4	30-Oct-12	05-Nov-12	0%	24-Feb-12	01-Mar-12																Sub-base 220mm
1D-14CD-H1-716	Kerbing K7 - Eastbound/Islands/Crossings	7	05-Nov-12	14-Nov-12	0%	01-Mar-12	12-Mar-12																Kerbing K7 - Eastbound
1D-14CD-H1-697	Kerbing K11	8	05-Nov-12	15-Nov-12	0%	01-Mar-12	13-Mar-12																Kerbing K11
1D-14CD-H1-711	Sub-base shape all carriageway areas	4	09-Nov-12	15-Nov-12	0%	07-Mar-12	13-Mar-12																Sub-base shape
1D-14CD-H1-699	Gullies	2	13-Nov-12	15-Nov-12	0%	09-Mar-12	13-Mar-12																Gullies
1D-14CD-H1-702	Traffic Signals	4	14-Nov-12	20-Nov-12	0%	12-Mar-12	16-Mar-12																Traffic Signals
1D-14CD-H1-703	Footpath Works	4	14-Nov-12	20-Nov-12	0%	14-Mar-12	20-Mar-12																Footpath Works
1D-14CD-H1-708	Setted Areas	9	15-Nov-12	28-Nov-12	0%	13-Mar-12	26-Mar-12																Setted Areas
1D-14CD-H1-734	225mm Base	5	15-Nov-12	22-Nov-12	0%	15-Mar-12	22-Mar-12																225mm Base
1D-14CD-H1-745	60mm Binder	2	22-Nov-12	26-Nov-12	0%	22-Mar-12	26-Mar-12																60mm Binder
1D-14CD-H1-726	35mm Wearing Course	1	26-Nov-12	27-Nov-12	0%	26-Mar-12	27-Mar-12																35mm Wearing Course
<b>Plane Access Area</b>		<b>244</b>	<b>20-Apr-12 A</b>	<b>26-Oct-12</b>	<b>96.23%</b>	<b>21-Feb-12</b>	<b>22-Feb-12</b>																
1D-14CD-H1-D207	Carriageway Value Engineering	0	20-Apr-12 A	15-Oct-12	0%																		Carriageway Value Engineering
1D-14CD-H1-910	Plane Access Area - Eastbound Lane	1	25-Oct-12	26-Oct-12	0%	21-Feb-12	22-Feb-12																Plane Access Area - Eastbound Lane
<b>Finishes</b>		<b>44</b>	<b>07-Nov-12</b>	<b>08-Jan-13</b>	<b>0%</b>	<b>05-Mar-12</b>	<b>03-Apr-12</b>																
1D-14CD-H1-920	Signs / Street Furniture	5	07-Nov-12	14-Nov-12	0%	05-Mar-12	12-Mar-12																Signs / Street Furniture
1D-14CD-H1-707	Road Signs and Markings	5	28-Nov-12	08-Jan-13	0%	27-Mar-12	03-Apr-12																Road Signs and Markings
<b>Expose and Infil Underground Chambers (ref TIE plan of 19 June 09)</b>		<b>13</b>	<b>20-Oct-11 A</b>	<b>16-Jan-12 A</b>	<b>100%</b>																		
1D-14CD-H1-D15	McNICOLAS WORKING ON OLE UTILITIES IN CLIFTON TERRACE PAVEMENT	5	20-Oct-11 A	02-Nov-11 A	100%																		McNICOLAS WORKING ON OLE UTILITIES IN CLIFTON TERRACE PAVEMENT
1D-14CD-H1-D16	BT FIBRE OPTICS TO BE SLEWED	0	02-Nov-11 A	21-Nov-11 A	100%																		BT FIBRE OPTICS TO BE SLEWED
1D-14CD-H1-D55	H1 Handed over to TT for BT diversion	0	11-Nov-11 A	21-Nov-11 A	100%																		H1 Handed over to TT for BT diversion
1D-14CD-H1-D56	H1 Handed over to BBUK after BT slewed	0	21-Nov-11 A	01-Dec-11 A	100%																		H1 Handed over to BBUK after BT slewed
1D-14CD-H1-D60	Piling to OLE bases required	0	21-Nov-11 A	16-Jan-12 A	100%																		Piling to OLE bases required
1D-14CD-H1-D57	TT retain possession of 4 OLE bases in H1	0	30-Nov-11 A	07-Dec-11 A	100%																		TT retain possession of 4 OLE bases in H1
1D-14CD-H1-D58	No IFC coordinates issued for Pile locations OLE 204B,182B,196B	0	30-Nov-11 A	08-Dec-11 A	100%																		No IFC coordinates issued for Pile locations OLE 204B,182B,196B
1D-14CD-H1-D59	11 Kva cable diversion	0	01-Dec-11 A	07-Dec-11 A	100%																		11 Kva cable diversion
1D-14CD-H1-D96	Piling to OLE	0	09-Jan-12 A	16-Jan-12 A	100%																		Piling to OLE
<b>Phase H2 - Haymarket Station frontage and approach to Viaduct</b>		<b>370</b>	<b>31-Mar-11 A</b>	<b>14-Mar-13</b>	<b>70.82%</b>	<b>04-Apr-12</b>	<b>13-Jul-12</b>																
<b>Excavation &amp; Track Construction</b>		<b>370</b>	<b>31-Mar-11 A</b>	<b>14-Mar-13</b>	<b>70.82%</b>	<b>04-Apr-12</b>	<b>13-Jul-12</b>																
1D-14G-H2-900	Erect Pedestrian Barrier	2	23-Mar-12 A	24-Mar-12 A	100%	04-Apr-12	09-Apr-12																Erect Pedestrian Barrier
1D-14G-H2-691	Site Clearance	2	26-Mar-12 A	09-Jan-13	60%	04-Apr-12	09-Apr-12																Site Clearance
<b>Excavation</b>		<b>331</b>	<b>26-Mar-12 A</b>	<b>18-Jan-13</b>	<b>79.16%</b>	<b>09-Apr-12</b>	<b>19-Apr-12</b>																
<b>Plane</b>		<b>42</b>	<b>26-Mar-12 A</b>	<b>11-Jan-13</b>	<b>95.24%</b>	<b>09-Apr-12</b>	<b>12-Apr-12</b>																
1D-14G-H2-672	Plane Main Carriageway 250mm	2	26-Mar-12 A	10-Jan-13	50%	09-Apr-12	11-Apr-12																Plane Main Carriageway 250mm

Date	Revision	Checked	Approved	Date	Revision	Checked	Approved
02-Feb...	Revision 0	SCS/M...	BSC	28-Jun-11	Revision 3a	SCS/MHE	BSC
16-Feb...	Revision 1	SCS/M...	BSC	08-Sep-11	Revision 4	SCS	BSC
18-Feb...	Revision 2	SCS/M...	BSC	16-Feb-12	Revision 4c	SCS	BBS
06-Mar...	Revision 3	SCS/M...	BSC	21-Jun-12	Revision 5c	SCS	BBS
				25-Oct-12	Rev. 5c Progressed to 121013	SCS	BBS

- Remaining Level of Effort
- Changed Works
- Revision 5c
- Actual Work
- Remaining Work
- Critical Remaining Work
- Rev 5c Milestone
- Milestone
- Changed Works
- Summary

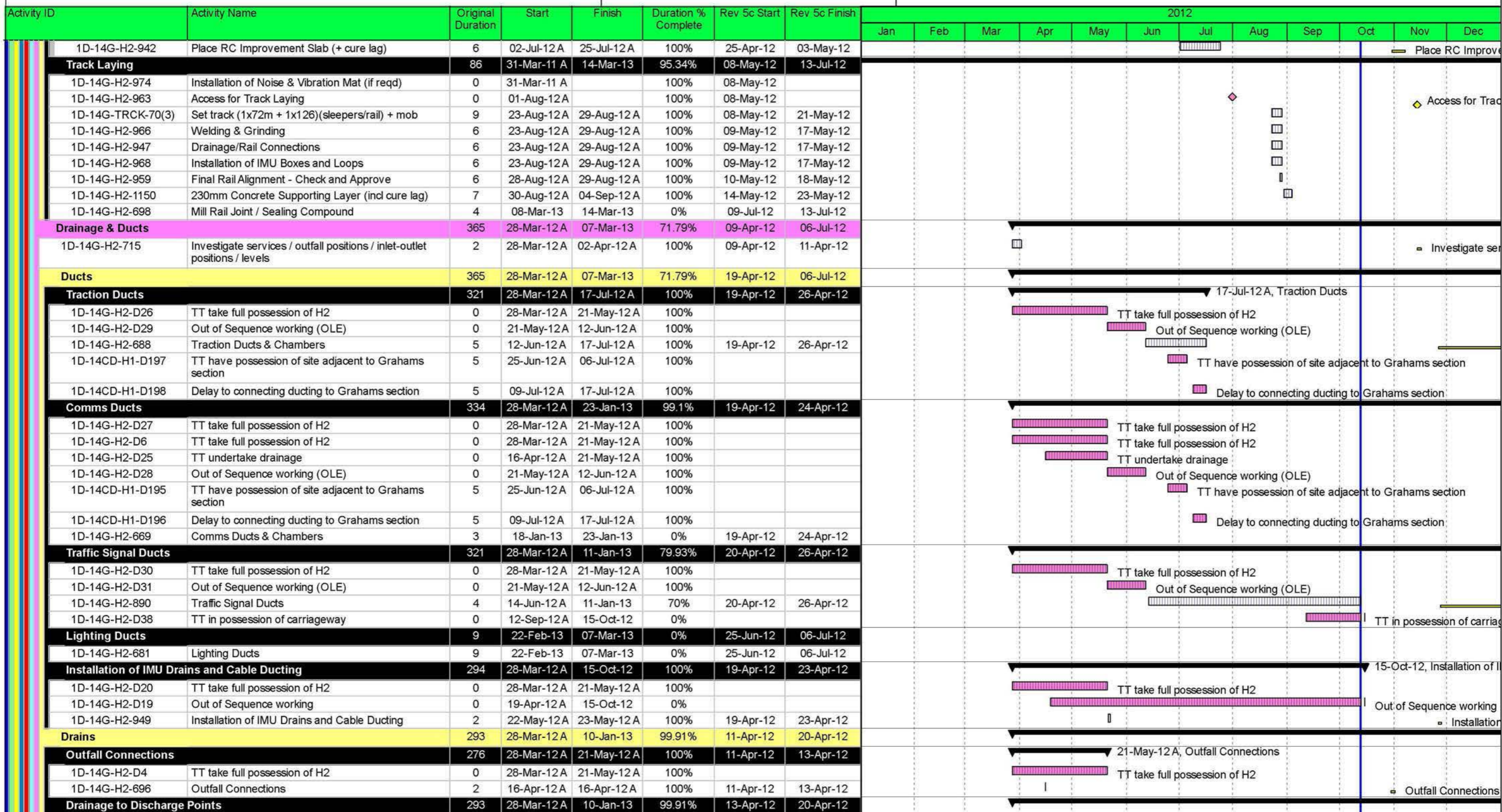
# EDINBURGH TRAM NETWORK



Date	Revision	Checked	Approved	Date	Revision	Checked	Approved
02-Feb...	Revision 0	SCS/M...	BSC	28-Jun-11	Revision 3a	SCS/MHE	BSC
16-Feb...	Revision 1	SCS/M...	BSC	08-Sep-11	Revision 4	SCS	BSC
18-Feb...	Revision 2	SCS/M...	BSC	16-Feb-12	Revision 4c	SCS	BBS
06-Ma...	Revision 3	SCS/M...	BSC	21-Jun-12	Revision 5c	SCS	BBS
				25-Oct-12	Rev. 5c Progressed to 121013	SCS	BBS

- █ Remaining Level of Effort
- █ Changed Works
- Revision 5c
- Actual Work
- Remaining Work
- █ Critical Remaining Work
- ◆ Rev 5c Milestone
- ◆ Milestone
- ◆ Changed Works
- ▬ Summary

## EDINBURGH TRAM NETWORK



Date	Revision	Checked	Approved	Date	Revision	Checked	Approved
02-Feb...	Revision 0	SCS/M...	BSC	28-Jun-11	Revision 3a	SCS/MHE	BSC
16-Feb...	Revision 1	SCS/M...	BSC	08-Sep-11	Revision 4	SCS	BSC
18-Feb...	Revision 2	SCS/M...	BSC	16-Feb-12	Revision 4c	SCS	BBS
06-Ma...	Revision 3	SCS/M...	BSC	21-Jun-12	Revision 5c	SCS	BBS
				25-Oct-12	Rev. 5c Progressed to 121013	SCS	BBS

**Page 47 of 56**

- █ Remaining Level of Effort
- █ Changed Works
- Revision 5c
- Actual Work
- Remaining Work

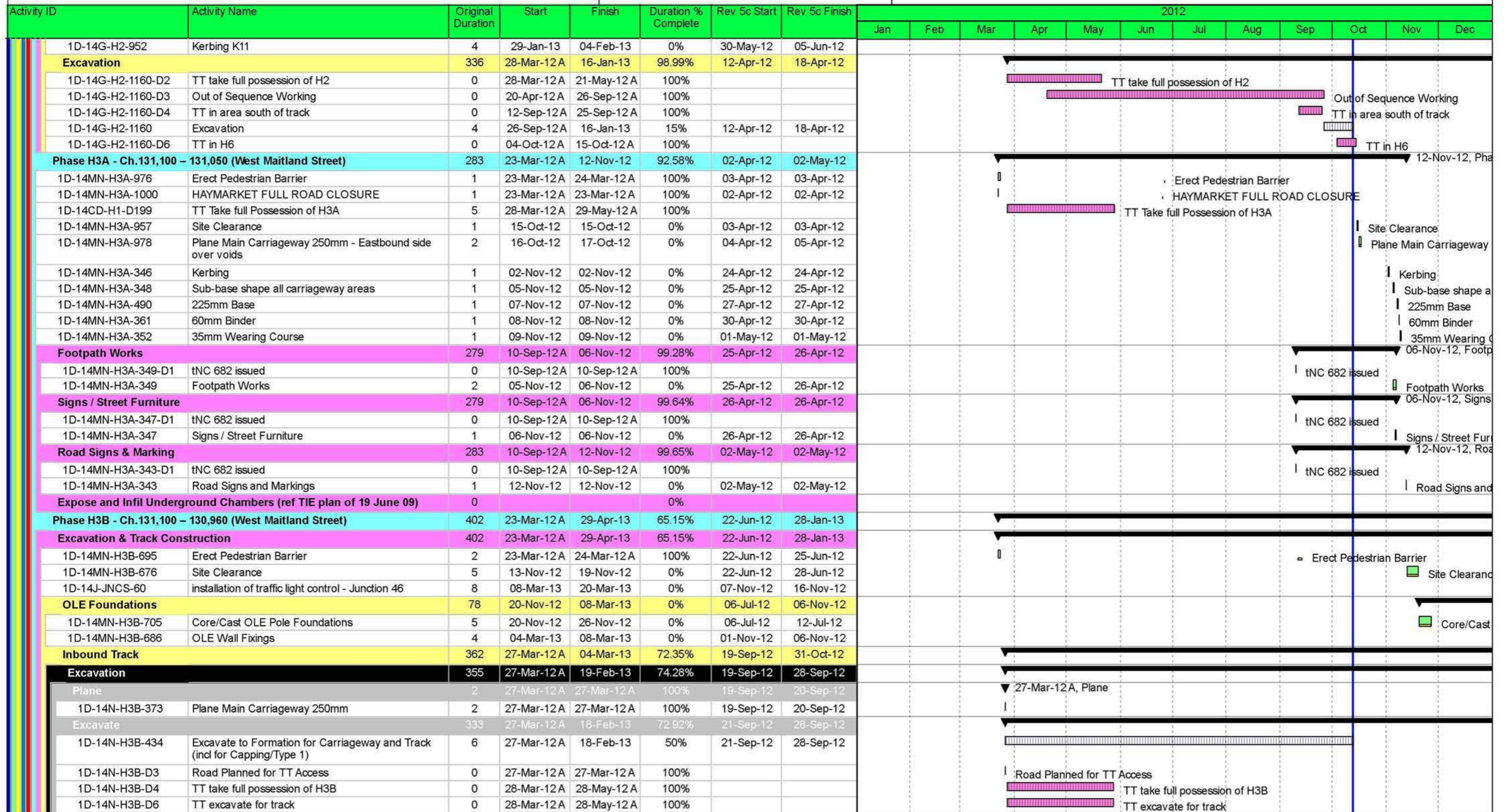
- █ Critical Remaining Work
- ◇ Rev 5c Milestone
- ◇ Milestone
- ◇ Changed Works
- Summary

Activity ID	Activity Name	Original Duration	Start	Finish	Duration % Complete	Rev 5c Start	Rev 5c Finish	2012													
								Jan	Feb	Mar	Apr	May	Jun	Jul	Aug	Sep	Oct	Nov	Dec		
1D-14G-H2-D5	TT take full possession of H2	0	28-Mar-12 A	21-May-12 A	100%																
1D-14G-H2-677	Drainage to Discharge Points	5	16-Apr-12 A	10-Jan-13	95%	13-Apr-12	20-Apr-12														
1D-14G-H2-D24	TT undertake drainage	0	16-Apr-12 A	21-May-12 A	100%																
1D-14G-H2-D37	TT in possession of carriageway	0	12-Sep-12 A	25-Sep-12 A	100%																
<b>Pavement Construction over tracks</b>		366	10-Aug-12 A	08-Mar-13	71.59%	23-May-12	09-Jul-12														
<b>Concrete Upstand</b>		354	10-Aug-12 A	05-Feb-13	76.9%	23-May-12	13-Jun-12														
1D-14G-H2-932-D2	Excavation	0	10-Aug-12 A	15-Oct-12	0%																
1D-14G-H2-932-D3	tNC 682	0	10-Sep-12 A	10-Sep-12 A	100%																
1D-14G-H2-932	Concrete Upstand	14	11-Oct-12 A	05-Feb-13	30%	23-May-12	13-Jun-12														
<b>Setts</b>		7	24-Jan-13	04-Feb-13	0%	29-May-12	07-Jun-12														
1D-14G-H2-953	Setts	7	24-Jan-13	04-Feb-13	0%	29-May-12	07-Jun-12														
<b>Sealant</b>		2	06-Mar-13	08-Mar-13	0%	05-Jul-12	09-Jul-12														
1D-14G-H2-964	Sealant to Concrete Upstand	2	06-Mar-13	08-Mar-13	0%	05-Jul-12	09-Jul-12														
<b>Carriageway Construction Westbound</b>		370	10-Sep-12 A	14-Mar-13	90.27%	23-May-12	13-Jul-12														
1D-14G-H2-986	Sub-base 220mm all carriageway areas	4	23-Jan-13	29-Jan-13	0%	23-May-12	30-May-12														
1D-14G-H2-967	Strengthened Kerb (ULE90130-01-HRL-01135)	6	29-Jan-13	06-Feb-13	0%	30-May-12	07-Jun-12														
1D-14G-H2-988	Kerbing K7 - Westbound/Islands/Crossings	12	06-Feb-13	22-Feb-13	0%	07-Jun-12	25-Jun-12														
1D-14G-H2-979	Gullies	4	19-Feb-13	25-Feb-13	0%	20-Jun-12	26-Jun-12														
1D-14G-H2-1001	Sub-base shape all carriageway areas	4	19-Feb-13	25-Feb-13	0%	20-Jun-12	26-Jun-12														
1D-14G-H2-994	225mm Base	5	25-Feb-13	04-Mar-13	0%	26-Jun-12	03-Jul-12														
1D-14G-H2-1025	60mm Binder	1	04-Mar-13	05-Mar-13	0%	03-Jul-12	04-Jul-12														
1D-14G-H2-996	35mm Wearing Course	1	05-Mar-13	06-Mar-13	0%	04-Jul-12	05-Jul-12														
<b>Traffic Signals</b>		360	10-Sep-12 A	28-Feb-13	98.89%	25-Jun-12	29-Jun-12														
1D-14G-H2-962-D1	tNC 682 issued	0	10-Sep-12 A	10-Sep-12 A	100%																
1D-14G-H2-962	Traffic Signals	4	22-Feb-13	28-Feb-13	0%	25-Jun-12	29-Jun-12														
<b>Footpath Works</b>		365	10-Sep-12 A	07-Mar-13	98.9%	02-Jul-12	06-Jul-12														
1D-14G-H2-983-D1	tNC 682 issued	0	10-Sep-12 A	10-Sep-12 A	100%																
1D-14G-H2-983	Footpath Works	4	01-Mar-13	07-Mar-13	0%	02-Jul-12	06-Jul-12														
<b>Finishes</b>		370	10-Sep-12 A	14-Mar-13	93.52%	11-Jun-12	13-Jul-12														
1D-14G-H2-1170	Signs / Street Furniture	5	08-Feb-13	15-Feb-13	0%	11-Jun-12	18-Jun-12														
<b>Road Signs &amp; Markings</b>		370	10-Sep-12 A	14-Mar-13	98.65%	06-Jul-12	13-Jul-12														
1D-14G-H2-977-D1	tNC 682 issued	0	10-Sep-12 A	10-Sep-12 A	100%																
1D-14G-H2-977	Road Signs and Markings	5	07-Mar-13	14-Mar-13	0%	06-Jul-12	13-Jul-12														
<b>Haymarket Station</b>		357	28-Mar-12 A	25-Feb-13	73.4%	12-Apr-12	26-Jun-12														
<b>Footpath Works</b>		337	28-Mar-12 A	28-Jan-13	77.75%	30-Apr-12	04-May-12														
1D-14G-H2-973-D2	TT take full possession of H2	0	28-Mar-12 A	21-May-12 A	100%																
1D-14G-H2-973-D3	Out of Sequence Works	0	20-Apr-12 A	15-Oct-12	0%																
1D-14G-H2-973-D4	TT in possession of area south of track	0	12-Sep-12 A	25-Sep-12 A	100%																
1D-14G-H2-973	Footpath Works / Finishes	4	22-Jan-13	28-Jan-13	0%	30-Apr-12	04-May-12														
<b>Setts</b>		357	12-Sep-12 A	25-Feb-13	95.8%	05-Jun-12	26-Jun-12														
1D-14G-H2-984-D1	TT in possession of area south of track	0	12-Sep-12 A	25-Sep-12 A	100%																
1D-14G-H2-984	Setted Areas	15	04-Feb-13	25-Feb-13	0%	05-Jun-12	26-Jun-12														
<b>Kerbing</b>		342	28-Mar-12 A	04-Feb-13	96.78%	26-Apr-12	05-Jun-12														
1D-14G-H2-D33	TT take full possession of H2	0	28-Mar-12 A	21-May-12 A	100%																
1D-14G-H2-952-D1	TT in possession of area south of track	0	12-Sep-12 A	25-Sep-12 A	100%																
1D-14G-H2-991	Kerbing K7	6	18-Jan-13	28-Jan-13	0%	26-Apr-12	04-May-12														

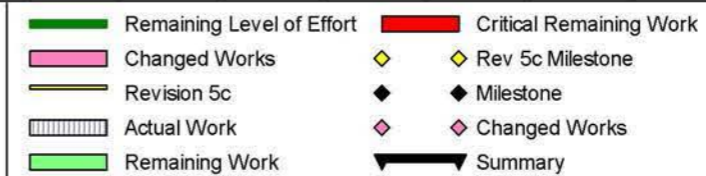
Date	Revision	Checked	Approved	Date	Revision	Checked	Approved
02-Feb...	Revision 0	SCS/M...	BSC	28-Jun-11	Revision 3a	SCS/MHE	BSC
16-Feb...	Revision 1	SCS/M...	BSC	08-Sep-11	Revision 4	SCS	BSC
18-Feb...	Revision 2	SCS/M...	BSC	16-Feb-12	Revision 4c	SCS	BBS
06-Ma...	Revision 3	SCS/M...	BSC	21-Jun-12	Revision 5c	SCS	BBS
				25-Oct-12	Rev. 5c Progressed to 121013	SCS	BBS

Remaining Level of Effort	Critical Remaining Work
Changed Works	Rev 5c Milestone
Revision 5c	Milestone
Actual Work	Changed Works
Remaining Work	Summary

# EDINBURGH TRAM NETWORK

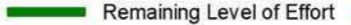
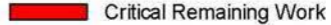
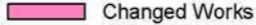



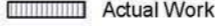

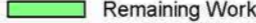



Date	Revision	Checked	Approved	Date	Revision	Checked	Approved
02-Feb...	Revision 0	SCS/M...	BSC	28-Jun-11	Revision 3a	SCS/MHE	BSC
16-Feb...	Revision 1	SCS/M...	BSC	08-Sep-11	Revision 4	SCS	BSC
18-Feb...	Revision 2	SCS/M...	BSC	16-Feb-12	Revision 4c	SCS	BBS
06-Ma...	Revision 3	SCS/M...	BSC	21-Jun-12	Revision 5c	SCS	BBS
				25-Oct-12	Rev. 5c Progressed to 121013	SCS	BBS



Activity ID	Activity Name	Original Duration	Start	Finish	Duration % Complete	Rev 5c Start	Rev 5c Finish	2012											
								Jan	Feb	Mar	Apr	May	Jun	Jul	Aug	Sep	Oct	Nov	Dec
1D-14N-H3B-D13	Excavation cannot be completed due to TM	0	20-May-12 A	15-Oct-12	0%														
1D-14N-H3B-D7	New design for floating track slab	0	30-May-12 A	05-Jul-12 A	100%														
1D-14N-H3B-D10	Works cannot be completed	0	24-Jul-12 A	15-Oct-12	0%														
Remove Kerbs		2	13-Feb-13	15-Feb-13	0%	21-Sep-12	24-Sep-12												
1D-14N-H3B-485	Remove existing kerbs	2	13-Feb-13	15-Feb-13	0%	21-Sep-12	24-Sep-12												
Suitability of Formation		0	25-Jul-12 A	25-Jul-12 A	0%	21-Sep-12	21-Sep-12												
1D-14N-H3B-426	Check suitability of formation (ongoing)	0	25-Jul-12 A	25-Jul-12 A	100%	21-Sep-12	21-Sep-12												
Capping Layer		2	14-Feb-13	18-Feb-13	0%	27-Sep-12	28-Sep-12												
1D-14N-H3B-377	Capping Layer to Adjacent Carriageway (600mm)	2	14-Feb-13	18-Feb-13	0%	27-Sep-12	28-Sep-12												
Make Good Formation		2	15-Feb-13	19-Feb-13	0%	27-Sep-12	28-Sep-12												
1D-14N-H3B-378	Make good Formation with Type 1 (Ave 220mm)	2	15-Feb-13	19-Feb-13	0%	27-Sep-12	28-Sep-12												
<b>Trackform</b>		<b>345</b>	<b>13-Jun-12 A</b>	<b>19-Feb-13</b>	<b>73.42%</b>	<b>03-Oct-12</b>	<b>10-Oct-12</b>												
Inspection & Testing of Sub Grade		340	13-Jun-12 A	19-Feb-13	73.09%	03-Oct-12	03-Oct-12												
1D-14N-H3B-D8	TT in possession of H3B	0	13-Jun-12 A	03-Jul-12 A	100%														
1D-14N-H3B-D9	Services Within Floating Track Slab	0	03-Jul-12 A	05-Jul-12 A	100%														
1D-14N-H3B-660	Carry out inspection and testing of Subgrade	1	24-Jul-12 A	19-Feb-13	90%	03-Oct-12	03-Oct-12												
1D-14N-H3B-D21	Excavation cannot be completed due to TM	0	24-Jul-12 A	15-Oct-12	0%														
Blinding		342	13-Jun-12 A	19-Feb-13	73.19%	04-Oct-12	05-Oct-12												
1D-14N-H3B-D11	TT in possession of H3B	0	13-Jun-12 A	03-Jul-12 A	100%														
1D-14N-H3B-D12	Services Within Floating Track Slab	0	03-Jul-12 A	05-Jul-12 A	100%														
1D-14N-H3B-431	Blinding Concrete	2	25-Jul-12 A	19-Feb-13	90%	04-Oct-12	05-Oct-12												
1D-14N-H3B-D22	Excavation cannot be completed due to TM	0	01-Aug-12 A	15-Oct-12	0%														
Place RC Improvement Slab		4	03-Aug-12 A	19-Feb-13	90%	05-Oct-12	10-Oct-12												
1D-14N-H3B-472	Place RC Improvement Slab (+ cure lag)	4	03-Aug-12 A	19-Feb-13	90%	05-Oct-12	10-Oct-12												
<b>Track Laying</b>		<b>362</b>	<b>04-Sep-12 A</b>	<b>04-Mar-13</b>	<b>72.35%</b>	<b>11-Oct-12</b>	<b>31-Oct-12</b>												
1D-14N-H3B-474	Installation of Noise & Vibration Mat (Ch 975 to 1095)	4	04-Sep-12 A	21-Feb-13	50%	11-Oct-12	16-Oct-12												
1D-14N-H3B-433	Access for Track Laying	0	12-Sep-12 A		100%	19-Oct-12													
1D-14N-TRCK-70(3)	Set track (1x144m)(sleepers/rail) + mob	6	12-Sep-12 A	25-Feb-13	90%	19-Oct-12	26-Oct-12												
1D-14N-H3B-476	Welding & Grinding	4	12-Sep-12 A	25-Feb-13	90%	22-Oct-12	25-Oct-12												
1D-14N-H3B-427	Drainage/Rail Connections	4	12-Sep-12 A	25-Feb-13	90%	22-Oct-12	25-Oct-12												
1D-14N-H3B-428	Installation of IMU Boxes and Loops	4	12-Sep-12 A	25-Feb-13	90%	22-Oct-12	25-Oct-12												
1D-14N-H3B-379	Final Rail Alignment - Check and Approve	4	12-Sep-12 A	25-Feb-13	90%	23-Oct-12	26-Oct-12												
230mm Concrete Supporting Layer		362	11-Oct-12 A	04-Mar-13	72.35%	25-Oct-12	31-Oct-12												
1D-14N-H3B-670-D7	Works Cannot be completed H3C	0	11-Oct-12 A	15-Oct-12	0%														
1D-14N-H3B-670	230mm Concrete Supporting Layer (incl cure lag)	5	25-Feb-13	04-Mar-13	0%	25-Oct-12	31-Oct-12												
<b>Outbound Track</b>		<b>402</b>	<b>27-Mar-12 A</b>	<b>29-Apr-13</b>	<b>65.15%</b>	<b>26-Jun-12</b>	<b>28-Jan-13</b>												
<b>Track Laying</b>		<b>402</b>	<b>24-Sep-12 A</b>	<b>29-Apr-13</b>	<b>65.15%</b>	<b>27-Jul-12</b>	<b>28-Jan-13</b>												
1D-14M-H3B-759	Installation of Noise & Vibration Mat (Ch 975 to Ch 1095)	4	24-Sep-12 A	27-Nov-12	90%	27-Jul-12	01-Aug-12												
1D-14M-H3B-788	Access for Track Laying	0	26-Sep-12 A		100%	06-Aug-12													
1D-14M-TRCK-70(3)	Set track (1x144m)(sleepers/rail)	6	26-Sep-12 A	02-Jan-13	90%	06-Aug-12	13-Aug-12												
1D-14M-H3B-781	Welding & Grinding	4	01-Oct-12 A	02-Jan-13	90%	07-Aug-12	10-Aug-12												
1D-14M-H3B-752	Drainage/Rail Connections	4	03-Oct-12 A	02-Jan-13	90%	07-Aug-12	10-Aug-12												
1D-14M-H3B-753	Installation of IMU Boxes and Loops	4	02-Jan-13	08-Jan-13	0%	07-Aug-12	10-Aug-12												
1D-14M-H3B-804	Final Rail Alignment - Check and Approve	4	02-Jan-13	08-Jan-13	0%	08-Aug-12	13-Aug-12												
1D-14N-H3B-471	Mill Rail Joint / Sealing Compound	6	19-Apr-13	29-Apr-13	0%	21-Jan-13	28-Jan-13												

Date	Revision	Checked	Approved	Date	Revision	Checked	Approved
02-Feb...	Revision 0	SCS/M...	BSC	28-Jun-11	Revision 3a	SCS/MHE	BSC
16-Feb...	Revision 1	SCS/M...	BSC	08-Sep-11	Revision 4	SCS	BSC
18-Feb...	Revision 2	SCS/M...	BSC	16-Feb-12	Revision 4c	SCS	BBS
06-Mar...	Revision 3	SCS/M...	BSC	21-Jun-12	Revision 5c	SCS	BBS
				25-Oct-12	Rev. 5c Progressed to 121013	SCS	BBS

	Remaining Level of Effort		Critical Remaining Work
	Changed Works		Rev 5c Milestone
	Revision 5c		Milestone
	Actual Work		Changed Works
	Remaining Work		Summary

# EDINBURGH TRAM NETWORK

Activity ID	Activity Name	Original Duration	Start	Finish	Duration % Complete	Rev 5c Start	Rev 5c Finish	2012											
								Jan	Feb	Mar	Apr	May	Jun	Jul	Aug	Sep	Oct	Nov	Dec
<b>230mm Concrete Supporting Layer</b>																			
1D-14N-H3B-835-D4	Out of Sequence Working	0	26-Sep-12 A	15-Oct-12	0%	10-Aug-12	16-Aug-12	Out of Sequence Working											
1D-14M-H3B-835	230mm Concrete Supporting Layer (incl cure lag)	5	04-Jan-13	11-Jan-13	0%	10-Aug-12	16-Aug-12												
<b>Trackform</b>																			
		269	13-Jun-12 A	27-Nov-12	88.31%	19-Jul-12	26-Jul-12	27-Nov-12											
<b>Inspection &amp; Testing of Sub Grade</b>																			
		264	13-Jun-12 A	27-Nov-12	88.16%	19-Jul-12	19-Jul-12	27-Nov-12											
1D-14N-H3B-D15	TT in possession of H3B	0	13-Jun-12 A	03-Jul-12 A	100%			TT in possession of H3B											
1D-14N-H3B-D16	Services Within Floating Track Slab	0	03-Jul-12 A	05-Jul-12 A	100%			Services Within Floating Track Slab											
1D-14N-H3B-D17	Basements within slab	0	17-Jul-12 A	19-Jul-12 A	100%			Basements within slab											
1D-14M-H3B-825	Carry out inspection and testing of Subgrade	1	24-Jul-12 A	27-Nov-12	90%	19-Jul-12	19-Jul-12	Carry out inspection and testing of Subgrade											
1D-14N-H3B-D18	Works cannot be completed due to TM	0	24-Jul-12 A	15-Oct-12	0%			Works cannot be completed due to TM											
<b>Blinding</b>																			
		266	17-Jul-12 A	27-Nov-12	88.17%	20-Jul-12	23-Jul-12	27-Nov-12											
1D-14N-H3B-D19	Basements within slab	0	17-Jul-12 A	19-Jul-12 A	100%			Basements within slab											
1D-14N-H3B-D20	Works cannot be completed due to TM	0	24-Jul-12 A	15-Oct-12	0%			Works cannot be completed due to TM											
1D-14M-H3B-806	Blinding Concrete	2	25-Jul-12 A	27-Nov-12	90%	20-Jul-12	23-Jul-12	Blinding Concrete											
<b>Place RC Improvement Slab</b>																			
		4	03-Aug-12 A	26-Nov-12	90%	23-Jul-12	26-Jul-12	26-Nov-12											
1D-14M-H3B-777	Place RC Improvement Slab (+ cure lag)	4	03-Aug-12 A	26-Nov-12	90%	23-Jul-12	26-Jul-12	Place RC Improvement Slab (+ cure lag)											
<b>Excavation</b>																			
		287	27-Mar-12 A	27-Nov-12	89.13%	26-Jun-12	16-Jul-12	27-Nov-12											
<b>Plane</b>																			
		2	13-Nov-12	14-Nov-12	0%	26-Jun-12	27-Jun-12	14-Nov-12, Plane Main Carriageway											
1D-14M-H3B-778	Plane Main Carriageway 250mm	2	13-Nov-12	14-Nov-12	0%	26-Jun-12	27-Jun-12	Plane Main Carriageway 250mm											
<b>Excavate</b>																			
		248	27-Mar-12 A	15-Nov-12	90.5%	28-Jun-12	05-Jul-12	15-Nov-12, Excavate to Formation											
1D-14M-H3B-749	Excavate to Formation for Carriageway and Track (incl for Capping/Type 1)	6	27-Mar-12 A	15-Nov-12	90%	28-Jun-12	05-Jul-12	Excavate to Formation for Carriageway and Track											
1D-14M-H3B-D1	Road Planned for TT Access	0	27-Mar-12 A	27-Mar-12 A	100%			Road Planned for TT Access											
1D-14M-H3B-D2	TT take full possession of H3B Excavate track only	0	28-Mar-12 A	15-Oct-12	0%			TT take full possession of H3B Excavate track only											
1D-14N-H3B-D14	Works Cannot be completed due to TM	0	24-Jul-12 A	15-Oct-12	0%			Works Cannot be completed due to TM											
<b>Remove Kerbs</b>																			
		2	15-Nov-12	16-Nov-12	0%	28-Jun-12	29-Jun-12	16-Nov-12, Remove existing kerbs											
1D-14M-H3B-960	Remove existing kerbs	2	15-Nov-12	16-Nov-12	0%	28-Jun-12	29-Jun-12	Remove existing kerbs											
<b>Suitability of Formation</b>																			
		0	25-May-12 A	25-May-12 A	0%	28-Jun-12	28-Jun-12	25-May-12 A, Suitability of Formation											
1D-14M-H3B-761	Check suitability of formation (ongoing)	0	25-May-12 A	25-May-12 A	100%	28-Jun-12	28-Jun-12	Check suitability of formation											
<b>Capping Layer</b>																			
		2	26-May-12 A	26-May-12 A	100%	04-Jul-12	05-Jul-12	26-May-12 A, Capping Layer											
1D-14M-H3B-742	Capping Layer to Adjacent Carriageway (600mm)	2	26-May-12 A	26-May-12 A	100%	04-Jul-12	05-Jul-12	Capping Layer to Adjacent Carriageway (600mm)											
<b>Make Good Formation</b>																			
		255	26-May-12 A	27-Nov-12	87.79%	13-Jul-12	16-Jul-12	27-Nov-12											
1D-14M-H3B-743	Make good Formation with Type 1 (Ave 220mm)	2	26-May-12 A	27-Nov-12	90%	13-Jul-12	16-Jul-12	Make good Formation with Type 1 (Ave 220mm)											
1D-14G-H3B-D20	New design for floating track slab	0	30-May-12 A	01-Jun-12 A	100%			New design for floating track slab											
1D-14G-H3B-D21	Palmerston / Torphichen St Junction (now H3C)	0	24-Jul-12 A	15-Oct-12	0%			Palmerston / Torphichen St Junction (now H3C)											
<b>Drainage &amp; Ducts</b>																			
		361	09-Apr-12 A	19-Feb-13	74.66%	26-Jun-12	02-Oct-12	19-Feb-13											
1D-14MN-H3B-668	Investigate services / outfall positions / inlet-outlet positions / levels	2	09-Apr-12 A	13-Apr-12 A	100%	26-Jun-12	27-Jun-12	Investigate services / outfall positions / inlet-outlet positions / levels											
<b>Ducts</b>																			
		361	21-May-12 A	20-Nov-12	99.77%	06-Jul-12	02-Oct-12	20-Nov-12											
<b>Traction Ducts</b>																			
		260	21-May-12 A	20-Nov-12	99.77%	06-Jul-12	23-Jul-12	20-Nov-12											
1D-14M-H3B-D11	TT Retain Grosvenor Street	0	21-May-12 A	13-Jun-12 A	100%			TT Retain Grosvenor Street											
1D-14M-H3B-D8	Design Change due to floating slab	0	30-May-12 A	31-May-12 A	100%			Design Change due to floating slab											
1D-14MN-H3B-651	Traction Ducts & Chambers	12	31-May-12 A	20-Nov-12	95%	06-Jul-12	23-Jul-12	Traction Ducts & Chambers											
1D-14M-H3B-D10	Hand Dig around Utilities	0	31-May-12 A	07-Jun-12 A	100%			Hand Dig around Utilities											
1D-14M-H3B-D12	TT take possession of H3B to address conflict with gas/water	0	13-Jun-12 A	03-Jul-12 A	100%			TT take possession of H3B to address conflict with gas/water											

Date	Revision	Checked	Approved	Date	Revision	Checked	Approved
02-Feb...	Revision 0	SCS/M...	BSC	28-Jun-11	Revision 3a	SCS/MHE	BSC
16-Feb...	Revision 1	SCS/M...	BSC	08-Sep-11	Revision 4	SCS	BSC
18-Feb...	Revision 2	SCS/M...	BSC	16-Feb-12	Revision 4c	SCS	BBS
06-Ma...	Revision 3	SCS/M...	BSC	21-Jun-12	Revision 5c	SCS	BBS
				25-Oct-12	Rev. 5c Progressed to 121013	SCS	BBS

- █ Remaining Level of Effort
- █ Changed Works
- Revision 5c
- Actual Work
- Remaining Work
- █ Critical Remaining Work
- ◆ Rev 5c Milestone
- ◆ Milestone
- ◆ Changed Works
- Summary

Activity ID	Activity Name	Original Duration	Start	Finish	Duration % Complete	Rev 5c Start	Rev 5c Finish	2012												
								Jan	Feb	Mar	Apr	May	Jun	Jul	Aug	Sep	Oct	Nov	Dec	
1D-14M-H3B-D15	Services Clash	0	10-Jul-12 A	17-Jul-12 A	100%															
<b>Comms Ducts</b>		256	29-May-12 A	20-Nov-12	99.84%	06-Jul-12	17-Jul-12													
1D-14M-H3B-D13	Redesign to avoid utility conflicts	0	29-May-12 A	08-Jun-12 A	100%															
1D-14MN-H3B-652	Comms Ducts & Chambers	8	08-Jun-12 A	20-Nov-12	95%	06-Jul-12	17-Jul-12													
1D-14M-H3B-D14	TT take possession of H3B to address conflict with gas/water	0	13-Jun-12 A	03-Jul-12 A	100%															
<b>Traffic Signal Ducts</b>		289	10-Sep-12 A	20-Nov-12	98.62%	13-Jul-12	18-Jul-12													
1D-14MN-H3B-653-D1	tNC 682 issued	0	10-Sep-12 A	10-Sep-12 A	100%															
1D-14MN-H3B-653	Traffic Signal Ducts	4	15-Nov-12	20-Nov-12	0%	13-Jul-12	18-Jul-12													
<b>Lighting Ducts</b>		340	10-Sep-12 A	31-Jan-13	100%	06-Sep-12	06-Sep-12													
1D-14MN-H3B-684-D1	tNC 682 issued	0	10-Sep-12 A	10-Sep-12 A	100%															
1D-14MN-H3B-684	Lighting Ducts	0	31-Jan-13		0%	06-Sep-12														
<b>Installation of IMU Drains and Cable Ducting</b>		361	28-May-12 A	19-Feb-13	74.66%	17-Jul-12	02-Oct-12													
1D-14N-H3B-369	Installation of IMU Drains and Cable Ducting	2	28-May-12 A	19-Feb-13	90%	01-Oct-12	02-Oct-12													
1D-14M-H3B-794	Installation of IMU Drains and Cable Ducting	2	29-May-12 A	29-May-12 A	100%	17-Jul-12	18-Jul-12													
1D-14M-H3B-D5	New Design for floating track slab	0	30-May-12 A	15-Oct-12	0%															
1D-14G-H3B-D22	Palmerston / Torphichen St Junction (now H3C)	0	24-Jul-12 A	15-Oct-12	0%															
<b>Drains</b>		41	16-Apr-12 A	14-Nov-12	95.08%	28-Jun-12	12-Jul-12													
<b>Outfall Connections</b>		2	13-Nov-12	14-Nov-12	0%	28-Jun-12	29-Jun-12													
1D-14MN-H3B-659	Outfall Connections	2	13-Nov-12	14-Nov-12	0%	28-Jun-12	29-Jun-12													
<b>Drainage to Discharge Points</b>		9	16-Apr-12 A	28-May-12 A	100%	02-Jul-12	12-Jul-12													
1D-14MN-H3B-860	Drainage to Discharge Points	9	16-Apr-12 A	28-May-12 A	100%	02-Jul-12	12-Jul-12													
<b>Carriageway Construction Westbound</b>		23	11-Jan-13	13-Feb-13	0%	17-Aug-12	18-Sep-12													
1D-14M-H3B-371	Sub-base 220mm all carriageway areas	4	11-Jan-13	17-Jan-13	0%	17-Aug-12	22-Aug-12													
1D-14M-H3B-372	Kerbing K7 - Westbound/Islands/Crossings	10	17-Jan-13	31-Jan-13	0%	23-Aug-12	05-Sep-12													
1D-14M-H3B-425	Sub-base shape all carriageway areas	4	28-Jan-13	01-Feb-13	0%	03-Sep-12	06-Sep-12													
1D-14M-H3B-363	Gullies	3	29-Jan-13	01-Feb-13	0%	04-Sep-12	06-Sep-12													
1D-14M-H3B-376	Traffic Signals	4	31-Jan-13	06-Feb-13	0%	06-Sep-12	11-Sep-12													
1D-14M-H3B-367	Footpath Works	7	31-Jan-13	11-Feb-13	0%	06-Sep-12	14-Sep-12													
1D-14M-H3B-368	225mm Base	3	01-Feb-13	06-Feb-13	0%	07-Sep-12	11-Sep-12													
1D-14M-H3B-359	60mm Binder	2	06-Feb-13	08-Feb-13	0%	12-Sep-12	13-Sep-12													
1D-14M-H3B-550	35mm Wearing Course	1	08-Feb-13	11-Feb-13	0%	14-Sep-12	14-Sep-12													
<b>Finishes</b>		17	21-Jan-13	13-Feb-13	0%	27-Aug-12	18-Sep-12													
1D-14M-H3B-374	Signs / Street Furniture	5	21-Jan-13	28-Jan-13	0%	27-Aug-12	31-Aug-12													
1D-14M-H3B-381	Road Signs and Markings	2	11-Feb-13	13-Feb-13	0%	17-Sep-12	18-Sep-12													
<b>Pavement Construction over tracks Outbound</b>		23	11-Jan-13	13-Feb-13	0%	17-Aug-12	18-Sep-12													
1D-14M-H3B-747	Concrete Upstand	10	11-Jan-13	25-Jan-13	0%	17-Aug-12	30-Aug-12													
1D-14M-H3B-739	Sealant to Concrete Upstand	2	11-Feb-13	13-Feb-13	0%	17-Sep-12	18-Sep-12													
<b>Carriageway Construction Stage 2</b>		34	04-Mar-13	19-Apr-13	0%	01-Nov-12	18-Jan-13													
1D-14N-H3B-386	Sub-base 220mm all carriageway areas	4	04-Mar-13	08-Mar-13	0%	01-Nov-12	06-Nov-12													
1D-14N-H3B-387	Drainage	5	08-Mar-13	15-Mar-13	0%	07-Nov-12	13-Nov-12													
1D-14N-H3B-520	Kerbing K11	11	08-Mar-13	25-Mar-13	0%	07-Nov-12	21-Nov-12													
1D-14N-H3B-388	Memorial Island	5	15-Mar-13	22-Mar-13	0%	14-Nov-12	20-Nov-12													
1D-14N-H3B-389	Kerbing K7 - Westbound/Islands/Crossings	10	22-Mar-13	08-Apr-13	0%	21-Nov-12	07-Jan-13													
1D-14N-H3B-392	Setted Areas	15	25-Mar-13	16-Apr-13	0%	22-Nov-12	15-Jan-13													
1D-14N-H3B-394	Sub-base shape all carriageway areas	4	03-Apr-13	09-Apr-13	0%	03-Jan-13	08-Jan-13													
1D-14N-H3B-391	Gullies	3	04-Apr-13	09-Apr-13	0%	04-Jan-13	08-Jan-13													

Date	Revision	Checked	Approved	Date	Revision	Checked	Approved
02-Feb...	Revision 0	SCS/M...	BSC	28-Jun-11	Revision 3a	SCS/MHE	BSC
16-Feb...	Revision 1	SCS/M...	BSC	08-Sep-11	Revision 4	SCS	BSC
18-Feb...	Revision 2	SCS/M...	BSC	16-Feb-12	Revision 4c	SCS	BBS
06-Ma...	Revision 3	SCS/M...	BSC	21-Jun-12	Revision 5c	SCS	BBS
				25-Oct-12	Rev. 5c Progressed to 121013	SCS	BBS

Remaining Level of Effort	Critical Remaining Work
Changed Works	Rev 5c Milestone
Revision 5c	Milestone
Actual Work	Changed Works
Remaining Work	Summary



# EDINBURGH TRAM NETWORK

Activity ID	Activity Name	Original Duration	Start	Finish	Duration % Complete	Rev 5c Start	Rev 5c Finish	2012												
								Jan	Feb	Mar	Apr	May	Jun	Jul	Aug	Sep	Oct	Nov	Dec	
1D-14N-H3B-395	Traffic Signals	4	08-Apr-13	12-Apr-13	0%	08-Jan-13	11-Jan-13													
1D-14N-H3B-396	Footpath Works	7	08-Apr-13	17-Apr-13	0%	08-Jan-13	16-Jan-13													
1D-14N-H3B-397	225mm Base	3	09-Apr-13	12-Apr-13	0%	09-Jan-13	11-Jan-13													
1D-14N-H3B-398	60mm Binder	2	12-Apr-13	16-Apr-13	0%	14-Jan-13	15-Jan-13													
1D-14N-H3B-399	35mm Wearing Course	1	16-Apr-13	17-Apr-13	0%	16-Jan-13	16-Jan-13													
<b>Finishes</b>		<b>18</b>	<b>26-Mar-13</b>	<b>19-Apr-13</b>	<b>0%</b>	<b>23-Nov-12</b>	<b>18-Jan-13</b>													
1D-14N-H3B-393	Signs / Street Furniture	5	26-Mar-13	03-Apr-13	0%	23-Nov-12	02-Jan-13													
1D-14N-H3B-530	Road Signs and Markings	2	17-Apr-13	19-Apr-13	0%	17-Jan-13	18-Jan-13													
<b>Pavement Construction over tracks Inbound</b>		<b>29</b>	<b>11-Mar-13</b>	<b>19-Apr-13</b>	<b>0%</b>	<b>08-Nov-12</b>	<b>18-Jan-13</b>													
1D-14N-H3B-382	Concrete Upstand	10	11-Mar-13	25-Mar-13	0%	08-Nov-12	21-Nov-12													
1D-14N-H3B-383	Setts	8	14-Mar-13	26-Mar-13	0%	13-Nov-12	22-Nov-12													
1D-14N-H3B-384	Sealant to Concrete Upstand	2	17-Apr-13	19-Apr-13	0%	17-Jan-13	18-Jan-13													
<b>Phase H4 – Haymarket Terrace Westbound</b>		<b>7</b>	<b>14-Mar-13</b>	<b>25-Mar-13</b>	<b>0%</b>	<b>13-Jul-12</b>	<b>24-Jul-12</b>													
1D-14-H4-403	Erect Barrier	1	14-Mar-13	15-Mar-13	0%	13-Jul-12	16-Jul-12													
1D-14-H4-404	Site Clearance	2	15-Mar-13	19-Mar-13	0%	16-Jul-12	18-Jul-12													
1D-14-H4-415	Plane Main Carriageway for Overlay	2	19-Mar-13	21-Mar-13	0%	18-Jul-12	20-Jul-12													
1D-14-H4-407	Road Signals and Markings	3	20-Mar-13	25-Mar-13	0%	19-Jul-12	24-Jul-12													
1D-14-H4-406	35mm Surface Course	1	21-Mar-13	22-Mar-13	0%	20-Jul-12	23-Jul-12													
<b>Phase H5 – West Maitland Street / Grosvenor Street</b>		<b>13</b>	<b>25-Mar-13</b>	<b>11-Apr-13</b>	<b>0%</b>	<b>01-Nov-12</b>	<b>16-Nov-12</b>													
<b>Roadworks</b>		<b>13</b>	<b>25-Mar-13</b>	<b>11-Apr-13</b>	<b>0%</b>	<b>01-Nov-12</b>	<b>16-Nov-12</b>													
1D-14-H5-409	Erect Barrier	1	25-Mar-13	26-Mar-13	0%	01-Nov-12	01-Nov-12													
1D-14-H5-560	Site Clearance	2	26-Mar-13	28-Mar-13	0%	02-Nov-12	05-Nov-12													
1D-14-H5-475	Excavation	2	26-Mar-13	28-Mar-13	0%	02-Nov-12	05-Nov-12													
1D-14-H5-416	Kerbing	5	28-Mar-13	05-Apr-13	0%	06-Nov-12	12-Nov-12													
1D-14-H5-419	Signs / Street Furniture	5	04-Apr-13	11-Apr-13	0%	12-Nov-12	16-Nov-12													
1D-14-H5-600	Road Signals and Markings	3	04-Apr-13	09-Apr-13	0%	12-Nov-12	14-Nov-12													
1D-14-H5-417	Footpath Works / Finishes	4	05-Apr-13	11-Apr-13	0%	13-Nov-12	16-Nov-12													
1D-14-H5-418	35mm Surface Course	1	05-Apr-13	08-Apr-13	0%	13-Nov-12	13-Nov-12													
<b>Drainage &amp; Ducts</b>		<b>5</b>	<b>26-Mar-13</b>	<b>02-Apr-13</b>	<b>0%</b>	<b>02-Nov-12</b>	<b>07-Nov-12</b>													
1D-14-H5-412	Investigate services / outfall positions / inlet-outlet positions / levels	1	26-Mar-13	27-Mar-13	0%	02-Nov-12	02-Nov-12													
<b>Ducts</b>		<b>4</b>	<b>27-Mar-13</b>	<b>02-Apr-13</b>	<b>0%</b>	<b>05-Nov-12</b>	<b>07-Nov-12</b>													
1D-14-H5-414	Traffic Signal and Lighting Ducts	3	27-Mar-13	02-Apr-13	0%	05-Nov-12	07-Nov-12													
<b>Drains</b>		<b>4</b>	<b>27-Mar-13</b>	<b>02-Apr-13</b>	<b>0%</b>	<b>05-Nov-12</b>	<b>07-Nov-12</b>													
1D-14-H5-413	Drainage to Discharge Points	3	27-Mar-13	02-Apr-13	0%	05-Nov-12	07-Nov-12													
<b>Phase H6/1 - Dalry Road (central island)</b>		<b>41</b>	<b>29-Apr-13</b>	<b>25-Jun-13</b>	<b>0%</b>	<b>29-Jan-13</b>	<b>22-Mar-13</b>													
<b>Phase 1</b>		<b>8</b>	<b>29-Apr-13</b>	<b>09-May-13</b>	<b>0%</b>	<b>29-Jan-13</b>	<b>06-Feb-13</b>													
1D-14-H6/1-423	Erect Barrier for island site	2	29-Apr-13	01-May-13	0%	29-Jan-13	30-Jan-13													
1D-14-H6/1-424	Site Clearance	3	01-May-13	07-May-13	0%	31-Jan-13	04-Feb-13													
1D-14-H6/1-435	Excavate and fill island for TM	2	07-May-13	09-May-13	0%	05-Feb-13	06-Feb-13													
<b>Phase 2</b>		<b>11</b>	<b>10-Jun-13</b>	<b>25-Jun-13</b>	<b>0%</b>	<b>08-Mar-13</b>	<b>22-Mar-13</b>													
1D-14-H6/1-477	Erect Barrier for island site	1	10-Jun-13	11-Jun-13	0%	08-Mar-13	08-Mar-13													
1D-14-H6/1-468	Excavation	2	11-Jun-13	13-Jun-13	0%	11-Mar-13	12-Mar-13													
1D-14-H6/1-429	Traffic Signal and Lighting Ducts	3	11-Jun-13	14-Jun-13	0%	11-Mar-13	13-Mar-13													
1D-14-H6/1-680	Core and Cast OLE Pole Foundations (1nr)	2	13-Jun-13	17-Jun-13	0%	13-Mar-13	14-Mar-13													
1D-14-H6/1-481	Kerbing	4	13-Jun-13	19-Jun-13	0%	13-Mar-13	18-Mar-13													
1D-14-H6/1-482	Footpath Works / Finishes	5	18-Jun-13	25-Jun-13	0%	18-Mar-13	22-Mar-13													

Date	Revision	Checked	Approved	Date	Revision	Checked	Approved
02-Feb...	Revision 0	SCS/M...	BSC	28-Jun-11	Revision 3a	SCS/MHE	BSC
16-Feb...	Revision 1	SCS/M...	BSC	08-Sep-11	Revision 4	SCS	BSC
18-Feb...	Revision 2	SCS/M...	BSC	16-Feb-12	Revision 4c	SCS	BBS
06-Ma...	Revision 3	SCS/M...	BSC	21-Jun-12	Revision 5c	SCS	BBS
				25-Oct-12	Rev. 5c Progressed to 121013	SCS	BBS

- Remaining Level of Effort
- Changed Works
- Revision 5c
- Actual Work
- Remaining Work
- Critical Remaining Work
- Rev 5c Milestone
- Milestone
- Changed Works
- Summary

# EDINBURGH TRAM NETWORK

Activity ID	Activity Name	Original Duration	Start	Finish	Duration % Complete	Rev 5c Start	Rev 5c Finish	2012												
								Jan	Feb	Mar	Apr	May	Jun	Jul	Aug	Sep	Oct	Nov	Dec	
1D-14-H6/1-473	Plane Main Carriageway for Overlay	1	19-Jun-13	20-Jun-13	0%	19-Mar-13	19-Mar-13													
1D-14-H6/1-505	Road Signals and Markings	3	19-Jun-13	24-Jun-13	0%	19-Mar-13	21-Mar-13													
1D-14-H6/1-484	35mm Surface Course	1	20-Jun-13	21-Jun-13	0%	20-Mar-13	20-Mar-13													
<b>Phase H6/2 - Dalry Road Eastbound</b>		<b>7</b>	<b>09-May-13</b>	<b>20-May-13</b>	<b>0%</b>	<b>07-Feb-13</b>	<b>15-Feb-13</b>													
1D-14-H6/2-437	Erect Barrier	1	09-May-13	10-May-13	0%	07-Feb-13	07-Feb-13													
1D-14-H6/2-438	Site Clearance	2	10-May-13	14-May-13	0%	08-Feb-13	11-Feb-13													
1D-14-H6/2-439	Traffic Signal and Lighting Ducts	2	10-May-13	14-May-13	0%	08-Feb-13	11-Feb-13													
1D-14-H6/2-650	Plane Main Carriageway for Overlay	2	14-May-13	16-May-13	0%	12-Feb-13	13-Feb-13													
1D-14-H6/2-442	Road Signals and Markings	3	15-May-13	20-May-13	0%	13-Feb-13	15-Feb-13													
1D-14-H6/2-441	35mm Surface Course	1	16-May-13	17-May-13	0%	14-Feb-13	14-Feb-13													
<b>Phase H6/3 - Morrison Street - Westbound Lane</b>		<b>8</b>	<b>20-May-13</b>	<b>30-May-13</b>	<b>0%</b>	<b>18-Feb-13</b>	<b>26-Feb-13</b>													
1D-14-H6/3-444	Erect Barrier	1	20-May-13	21-May-13	0%	18-Feb-13	18-Feb-13													
1D-14-H6/3-445	Site Clearance	2	21-May-13	23-May-13	0%	19-Feb-13	20-Feb-13													
1D-14-H6/3-446	Traffic Signal and Lighting Ducts	2	21-May-13	23-May-13	0%	19-Feb-13	20-Feb-13													
1D-14-H6/3-447	Plane Main Carriageway for Overlay	2	23-May-13	28-May-13	0%	21-Feb-13	22-Feb-13													
1D-14-H6/3-448	35mm Surface Course	1	28-May-13	29-May-13	0%	25-Feb-13	25-Feb-13													
1D-14-H6/3-449	Road Markings and Signs	1	29-May-13	30-May-13	0%	26-Feb-13	26-Feb-13													
<b>Phase H6/4 - Morrison Street - Dalry Road</b>		<b>21</b>	<b>30-May-13</b>	<b>28-Jun-13</b>	<b>0%</b>	<b>27-Feb-13</b>	<b>27-Mar-13</b>													
1D-14-H6/4-451	Erect Barrier	1	30-May-13	31-May-13	0%	27-Feb-13	27-Feb-13													
1D-14-H6/4-452	Site Clearance	2	31-May-13	04-Jun-13	0%	28-Feb-13	01-Mar-13													
1D-14-H6/4-453	Traffic Signal and Lighting Ducts	2	31-May-13	04-Jun-13	0%	28-Feb-13	01-Mar-13													
1D-14-H6/4-454	Plane Main Carriageway for Overlay	2	04-Jun-13	06-Jun-13	0%	04-Mar-13	05-Mar-13													
1D-14-H6/4-456	Road Signals and Markings	3	05-Jun-13	10-Jun-13	0%	05-Mar-13	07-Mar-13													
1D-15M-JNCS-60	installation of traffic light control - Junction 48	17	05-Jun-13	28-Jun-13	0%	05-Mar-13	27-Mar-13													
1D-14-H6/4-455	35mm Surface Course	1	06-Jun-13	07-Jun-13	0%	06-Mar-13	06-Mar-13													
<b>Phase H6/5 - Complete Memorial Island</b>		<b>12</b>	<b>10-Jun-13</b>	<b>26-Jun-13</b>	<b>0%</b>	<b>08-Mar-13</b>	<b>25-Mar-13</b>													
1D-14-H6/5-458	Erect Barrier	1	10-Jun-13	11-Jun-13	0%	08-Mar-13	08-Mar-13													
1D-14-H6/5-459	Plane Main Carriageway for Overlay	1	11-Jun-13	12-Jun-13	0%	11-Mar-13	11-Mar-13													
1D-14-H6/5-461	Traffic Signal and Lighting Ducts	3	11-Jun-13	14-Jun-13	0%	11-Mar-13	13-Mar-13													
1D-14-H6/5-510	Excavation	1	12-Jun-13	13-Jun-13	0%	12-Mar-13	12-Mar-13													
1D-14-H6/5-462	Core and Cast OLE Pole Foundations (1nr)	2	13-Jun-13	17-Jun-13	0%	13-Mar-13	14-Mar-13													
1D-14-H6/5-463	Kerbing	3	13-Jun-13	18-Jun-13	0%	13-Mar-13	15-Mar-13													
1D-14-H6/5-466	Signs / Street Furniture	5	13-Jun-13	20-Jun-13	0%	13-Mar-13	19-Mar-13													
1D-14-H6/5-464	Footpath Works / Finishes	2	18-Jun-13	20-Jun-13	0%	18-Mar-13	19-Mar-13													
1D-14-H6/5-465	35mm Surface Course	1	20-Jun-13	21-Jun-13	0%	20-Mar-13	20-Mar-13													
1D-14-H6/5-467	Road Signals and Markings	3	21-Jun-13	26-Jun-13	0%	21-Mar-13	25-Mar-13													
<b>Commissioning and Testing</b>		<b>10</b>	<b>29-Oct-13</b>	<b>12-Nov-13</b>	<b>0%</b>	<b>26-Jul-13</b>	<b>08-Aug-13</b>													
1D-14/15--817	Commissioning and Testing	10	29-Oct-13	12-Nov-13	0%	26-Jul-13	08-Aug-13													
<b>Princes Street West Tram Stop</b>		<b>159</b>	<b>31-Mar-11 A</b>	<b>28-Mar-13</b>	<b>25.16%</b>	<b>31-Mar-11</b>	<b>06-Sep-12</b>													
1C-15A-TRMS-20	wayleave issued	0	31-Mar-11 A		100%	31-Mar-11														
721	Tramstop Platform incl related cubicle foundations	20	15-Oct-12	09-Nov-12	0%	25-Apr-12	23-May-12													
1C-15A-TRMS-30	Access for visual inspection for E&M Tram Stop installation (01D Princess Street West)	0	25-Oct-12		0%	08-May-12														
1C-15A-TRMS-40	Deliver and Install Shelter	10	12-Nov-12	23-Nov-12	0%	24-May-12	07-Jun-12													
1C-15A-TRMS-31	Access for E&M Tram Stop installation (01D Princess Street West)	0	26-Nov-12		0%	08-Jun-12														
1C-15A-TRMS-45	Deliver and Install cubicle	10	26-Nov-12	10-Jan-13	0%	08-Jun-12	21-Jun-12													

◆ wayleave issued  
 Tramstop Platform  
◆ Access for visual inspection  
 Deliver and Install  
◆ Access for

Date	Revision	Checked	Approved	Date	Revision	Checked	Approved
02-Feb...	Revision 0	SCS/M...	BSC	28-Jun-11	Revision 3a	SCS/MHE	BSC
16-Feb...	Revision 1	SCS/M...	BSC	08-Sep-11	Revision 4	SCS	BSC
18-Feb...	Revision 2	SCS/M...	BSC	16-Feb-12	Revision 4c	SCS	BBS
06-Ma...	Revision 3	SCS/M...	BSC	21-Jun-12	Revision 5c	SCS	BBS
				25-Oct-12	Rev. 5c Progressed to 121013	SCS	BBS

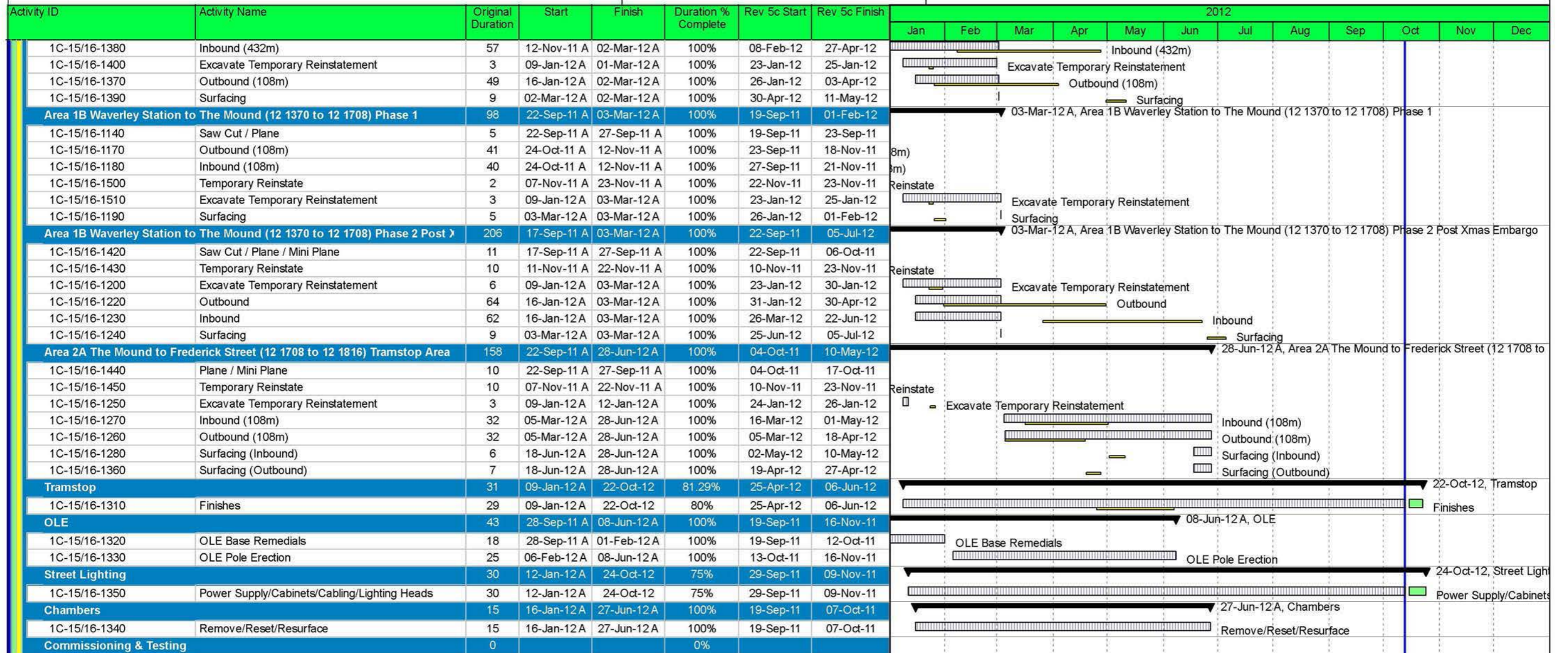
Remaining Level of Effort  
 Changed Works  
 Revision 5c  
 Actual Work  
 Remaining Work  
 Critical Remaining Work  
◆ Rev 5c Milestone  
◆ Milestone  
◆ Changed Works  
 Summary

Activity ID	Activity Name	Original Duration	Start	Finish	Duration % Complete	Rev 5c Start	Rev 5c Finish	2012												
								Jan	Feb	Mar	Apr	May	Jun	Jul	Aug	Sep	Oct	Nov	Dec	
1C-15A-TRMS-50	Install LV Power Supply and LV Power Equipment	25	11-Jan-13	14-Feb-13	0%	22-Jun-12	26-Jul-12													
1C-15A-TRMS-70	Install Telecon Equipment	20	15-Feb-13	14-Mar-13	0%	27-Jul-12	23-Aug-12													
1C-15A-TRMS-60	Install Station Control Equipment + AFC Equipment	25	15-Feb-13	21-Mar-13	0%	27-Jul-12	30-Aug-12													
1C-15A-TRMS-80	Package Test Tramstop	5	22-Mar-13	28-Mar-13	0%	30-Aug-12	06-Sep-12													
<b>Shadwick Place Tram Stop</b>		<b>226</b>	<b>31-Mar-11 A</b>	<b>02-Jul-13</b>	<b>23.89%</b>	<b>31-Mar-11</b>	<b>11-Mar-13</b>													
1D-14-TRMS-20	wayleave issued	0	31-Mar-11 A		100%	31-Mar-11														
1D-14-TRMS-90	Civil Engineering And Building Works	65	02-Nov-12	07-Mar-13	0%	18-Jul-12	16-Oct-12													
831	Ducting and Chambers	15	23-Nov-12	17-Jan-13	0%	08-Aug-12	28-Aug-12													
862	Tramstop Platform incl related cubicle foundations	40	17-Jan-13	14-Mar-13	0%	29-Aug-12	23-Oct-12													
1D-14-TRMS-30	Access for visual inspection for E&M Tram Stop installation (01D Shadwick Place)	0	26-Feb-13		0%	08-Oct-12														
1D-14-TRMS-40	Deliver and Install Shelter	10	14-Mar-13	28-Mar-13	0%	24-Oct-12	06-Nov-12													
1D-14-TRMS-31	Access for E&M Tram Stop installation (01D Shadwick Place)	0	28-Mar-13		0%	07-Nov-12														
1D-14-TRMS-45	Deliver and Install cubicle	10	28-Mar-13	12-Apr-13	0%	07-Nov-12	20-Nov-12													
1D-14-TRMS-50	Install LV Power Supply and LV Power Equipment	25	12-Apr-13	20-May-13	0%	21-Nov-12	28-Jan-13													
1D-14-TRMS-70	Install Telecon Equipment	20	20-May-13	18-Jun-13	0%	29-Jan-13	25-Feb-13													
1D-14-TRMS-60	Install Station Control Equipment + AFC Equipment	25	20-May-13	25-Jun-13	0%	29-Jan-13	04-Mar-13													
1D-14-TRMS-80	Package Test Tramstop	5	25-Jun-13	02-Jul-13	0%	05-Mar-13	11-Mar-13													
<b>01C &amp; 01D Waverley to Lothian Road</b>		<b>284</b>	<b>06-Jun-11 A</b>	<b>24-Oct-12</b>	<b>97.36%</b>	<b>06-Jun-11</b>	<b>05-Jul-12</b>													
<b>Constraints / Procedures / Documentation / Approvals</b>		<b>15</b>	<b>22-Aug-11 A</b>	<b>12-Sep-11 A</b>	<b>100%</b>	<b>22-Aug-11</b>	<b>12-Sep-11</b>	/ Documentation / Approvals												
1C-15/16-260	Prepare Method Statements & Risk Assessment	0	22-Aug-11 A		100%	22-Aug-11		nt												
1C-15/16-280	Apply for 3rd Party Licence	0	22-Aug-11 A		100%	22-Aug-11														
1C-15/16-270	Stakeholder Notifications (including Traffic Management))	0	03-Sep-11 A		100%	22-Aug-11		Management))												
1C-15/16-300	Request TTRO's	0	05-Sep-11 A		100%	05-Sep-11														
1C-15/16-290	Request Permit to Commence Work	0	12-Sep-11 A		100%	12-Sep-11														
<b>Traffic Management Enabling Works</b>		<b>75</b>	<b>06-Jun-11 A</b>	<b>17-Sep-11 A</b>	<b>100%</b>	<b>06-Jun-11</b>	<b>16-Sep-11</b>	abling Works												
1C-15/16-1110	Phase 1	20	06-Jun-11 A	24-Jun-11 A	100%	06-Jun-11	01-Jul-11													
1C-15/16-1130	Phase 2	10	02-Sep-11 A	17-Sep-11 A	100%	05-Sep-11	16-Sep-11													
<b>Area 1A Lothian Road to South Charlotte St. (13 0268 to 13 0376)</b>		<b>101</b>	<b>17-Sep-11 A</b>	<b>18-Nov-11 A</b>	<b>100%</b>	<b>19-Sep-11</b>	<b>06-Feb-12</b>	Area 1A Lothian Road to South Charlotte St. (13 0268 to 13 0376)												
1C-15/16-1080	Saw Cut / Plane	5	17-Sep-11 A	27-Sep-11 A	100%	19-Sep-11	23-Sep-11													
1C-15/16-1090	Outbound (108m)	41	22-Sep-11 A	18-Nov-11 A	100%	23-Sep-11	18-Nov-11	8m)												
1C-15/16-1100	Inbound (108m)	40	22-Sep-11 A	18-Nov-11 A	100%	27-Sep-11	21-Nov-11	8m)												
1C-15/16-1470	Excavate Temporary Reinstatement	3	07-Nov-11 A	07-Nov-11 A	100%	23-Jan-12	25-Jan-12	Excavate Temporary Reinstatement												
1C-15/16-1460	Temporary Reinstatement	2	07-Nov-11 A	07-Nov-11 A	100%	22-Nov-11	23-Nov-11	Reinstatement												
1C-15/16-1150	Surfacing	8	18-Nov-11 A	18-Nov-11 A	100%	26-Jan-12	06-Feb-12	Surfacing												
<b>Area 2B South Charlotte st. to Frederick St. (12 1816 to 13 0268) Phase 1</b>		<b>113</b>	<b>21-Sep-11 A</b>	<b>05-Mar-12 A</b>	<b>100%</b>	<b>20-Sep-11</b>	<b>23-Feb-12</b>	05-Mar-12 A, Area 2B South Charlotte st. to Frederick St. (12 1816 to 13 0268) Phase 1												
1C-15/16-1290	Saw Cut / Plane (outbound)	7	21-Sep-11 A	27-Sep-11 A	100%	20-Sep-11	28-Sep-11													
1C-15/16-1120	Outbound (324m)	30	25-Sep-11 A	05-Mar-12 A	100%	29-Sep-11	09-Nov-11	Outbound (324m)												
1C-15/16-1480	Temporary Reinstatement	10	05-Nov-11 A	23-Nov-11 A	100%	10-Nov-11	23-Nov-11	Reinstatement												
1C-15/16-1490	Excavate Temporary Reinstatement	3	09-Jan-12 A	12-Jan-12 A	100%	23-Jan-12	25-Jan-12	Excavate Temporary Reinstatement												
1C-15/16-1160	Outbound (324m) post Xmas	21	01-Feb-12 A	01-Mar-12 A	100%	26-Jan-12	23-Feb-12	Outbound (324m) post Xmas												
1C-15/16-1125	Surfacing (Outbound)	8	01-Mar-12 A	01-Mar-12 A	100%	14-Feb-12	23-Feb-12	Surfacing (Outbound)												
<b>Area 2B South Charlotte st. to Frederick St. (12 1816 to 13 0268) Phase 2</b>		<b>162</b>	<b>22-Sep-11 A</b>	<b>02-Mar-12 A</b>	<b>100%</b>	<b>29-Sep-11</b>	<b>11-May-12</b>	02-Mar-12 A, Area 2B South Charlotte st. to Frederick St. (12 1816 to 13 0268) Phase 2												
1C-15/16-1300	Plane / Mini Plane	9	22-Sep-11 A	27-Sep-11 A	100%	29-Sep-11	11-Oct-11													
1C-15/16-1410	Temporary Reinstatement	10	05-Nov-11 A	21-Nov-11 A	100%	10-Nov-11	23-Nov-11	Reinstatement												

Date	Revision	Checked	Approved	Date	Revision	Checked	Approved
02-Feb...	Revision 0	SCS/M...	BSC	28-Jun-11	Revision 3a	SCS/MHE	BSC
16-Feb...	Revision 1	SCS/M...	BSC	08-Sep-11	Revision 4	SCS	BSC
18-Feb...	Revision 2	SCS/M...	BSC	16-Feb-12	Revision 4c	SCS	BBS
06-Ma...	Revision 3	SCS/M...	BSC	21-Jun-12	Revision 5c	SCS	BBS
				25-Oct-12	Rev. 5c Progressed to 121013	SCS	BBS

- Remaining Level of Effort
- Changed Works
- Revision 5c
- Actual Work
- Remaining Work
- Critical Remaining Work
- Rev 5c Milestone
- Milestone
- Changed Works
- Summary

# EDINBURGH TRAM NETWORK



Date	Revision	Checked	Approved	Date	Revision	Checked	Approved
02-Feb...	Revision 0	SCS/M...	BSC	28-Jun-11	Revision 3a	SCS/MHE	BSC
16-Feb...	Revision 1	SCS/M...	BSC	08-Sep-11	Revision 4	SCS	BSC
18-Feb...	Revision 2	SCS/M...	BSC	16-Feb-12	Revision 4c	SCS	BBS
06-Ma...	Revision 3	SCS/M...	BSC	21-Jun-12	Revision 5c	SCS	BBS
				25-Oct-12	Rev. 5c Progressed to 121013	SCS	BBS

