

Network Rail: Form C Submissions

The Guaranteed Maximum Price is based on the standard requirements for Form C submissions and on approvals being given in line with the Programme. tie shall assist the Infraco in obtaining all relevant approvals.

Third Party Agreements at Edinburgh Park and Airport

The timetable constraints as detailed in the Third Party Agreement licence with Edinburgh Airport Ltd. (EAL), other than agreeing respective completion dates for the approved packages are not applicable in executing the scope of Project Carlisle.

The existing New Edinburgh Ltd. (NEL) license has deadlines of 18 months (excluding Edinburgh Park Viaduct) and 24 months (at the viaduct), which are about to expire. For the purposes of the Guaranteed Maximum Price Infraco has assumed that the required timeframes can be agreed with NEL by tie / CEC to allow Infraco to construct, test and commission in accordance with the GMP Programme.

Any impact of these dates on the GMP Programme shall be dealt with separately as a tie Change and an appropriate tie Change Order will be issued.

Overall Traffic Management Model Approval

The Guaranteed Maximum Price is based on the drawings, specifications and schedules ("GMP Drawings"). The Infraco shall comply with the requirements of the Employer's Requirements. Any required Change to the Employer's Requirements or any preferential or other design changes required by CEC will be dealt with separately as a tie Change and an appropriate tie Change Order will be issued.

OLE Vehicle Impact Report

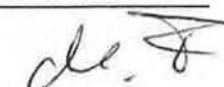
Infraco is responsible for obtaining CEC's acceptance and agreement. To date, CEC has not responded within the Approval Period as specified within the Infraco Contract. Any required Change due to late comments by CEC will be dealt with separately as a tie Change and an appropriate tie Change Order will be issued.

Lochside Avenue Junction

The Guaranteed Maximum Price is based on the drawings, specifications and schedules approved by CEC on 20 May 2010 and included in the electronic record of "GMP Drawings". The Guaranteed Maximum Price assumes no further comments or Informatives raised by CEC beyond those comments provided with the Approval of this design.

Changes to Traffic Regulation Orders (TROs)

tie is responsible for promotion and making of all necessary TROs to meet the PC Programme. tie confirms that Infraco have provided all necessary documentation and support required to support TRO 1 (defined as necessary for tram operations) for all on-street (Line 1) and off street (Line 2) sections. Further, Infraco is not responsible for the cost of any changes or amendments to any TRO documentation (drawings, schedules or reports) or to the design as a result of the TRO process or for any delays to the PC Programme due to a delay in the TRO process. Infraco is not responsible for the cost of any abortive works or delays due to the final "made" TRO impacting on the IFC design or changes to the GMP Drawings.



Drainage Alignment Drawings (Off-Street)

Any changes required to the current design on the drawings, specifications and schedules ("GMP Drawings), including both the impact on design and in construction, shall be dealt with separately as a tie Change and an appropriate tie Change Order will be issued.

OLE Interface at Tower Place Bridge

The Guaranteed Maximum Price is based on the drawings, specifications and schedules ("GMP Drawings").

OLE Interface at Russell Road Retaining Walls 3 & 4

The Guaranteed Maximum Price is based on the drawings, specifications and schedules ("GMP Drawings").

Interface with Scottish Power at Depot

Meter arrangements and Local Power supply provider shall be in place by 12 July 2010.

Way-leave clarification shall be finalised and approved by tie by 12 July 2010.

Washing Plant

The Guaranteed Maximum Price is based on the Siemens proposal and the actual status of design. Any additional arrangements shall be subject to a tie Notice of Change and an appropriate tie Change Order will be issued.

Combined Poles

The Guaranteed Maximum Price includes all pole extensions required to allow for the implementation of the street lighting integrated with the OLE poles for the original scope of work as indicated on the IFC drawings. The installation of the extensions and provision / installation of the street lighting beyond east end of Princess Street have to be performed by others.

Cable ducts

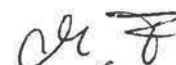
Cable duct connections between ETN and the Urban Traffic Control (UTC) and the City in View CCTV Control in a size of 150 mm diameter are not allowed in the Guaranteed Maximum Price due to an outstanding clarification on the right of way and the related design.

Noise & Vibration

Due to outstanding issues, the design and construction of the Floating Slab (Floating Track) as a Noise & Vibration protecting measures, no allowance has been made in the Guaranteed Maximum Price.

HV / LV Supplies

The Guaranteed Maximum Price includes the value confirmed in TNC 014. (INF CORR 2304/RB). Any modification required for the HV / LV supply shall be subject to additional TNC.



Utilities / Utility Works

The Guaranteed Maximum Price does not include for any Utilities, utilities or any Utilities Works that will be required to accommodate the Infraco Works other than those that have already been implemented through a tie Change Order.

Contaminated Materials

The Guaranteed Maximum Price does not include for dealing with contamination other than that which has been implemented through a tie Change Order. tie will be responsible for the risk associated with contaminated land, including contaminated materials and plants.

Below ground obstructions/voids

The Guaranteed Maximum Price does not include for any occurrence of archaeological findings, obstructions or voids below the original ground level other than those that have been implemented through a tie Change Order.

Trackbed & Foundation to Section 1D - Princes Street West to Haymarket

The Guaranteed Maximum Price is based on the "GMP Drawings".

Road Reconstruction to Section 1D - Princes Street West to Haymarket

The Guaranteed Maximum Price is based on the "GMP Drawings".

Duct Bank to City Chambers

No civil works have been allowed in the Guaranteed Maximum Price for any construction work from Princes Street to the City Chambers.

Design Assurance Statements

Infraco will carry out all necessary assurance statements, approvals and consents for the design, construction, testing and commissioning of the Edinburgh Tram Network in respect of those parts defined in this Proposal, with respect to the Safety Assurance Plan to enable tie to comply with ROGS and other key statutory requirements.

tie Change Orders

Infraco and tie are in the process of negotiating numerous tie Change Orders, however it is unlikely and unnecessary that they will be finalised prior to submission of this Proposal, in so far as the estimated amounts of these tie Change Orders have been incorporated in the GMP. Since Change Orders may have been issued after 30 June 2010 the GMP will require minor adjustment, as that the GMP only makes allowances for tie Change Orders issued prior to this date. However, in the instances where tie has issued Change Orders which contain qualifications, the qualifications remain valid and have been utilised in the development of the GMP.

Siemens' Materials and Equipment regarding the sections east of Terminal Point

The Guaranteed Maximum Price includes the value of all materials and equipment which Siemens has already ordered for the scope east of Terminal Point. The Guaranteed Maximum Price includes for delivery of all said materials and equipment, DDP (incoterms 2000) up to the defined projects warehouse in Edinburgh area. Arrangements



have to be made by tie for taking over the project warehouse after completion of construction works for the initial phase or the transport of materials and equipment to other suitable locations.

An itemised and priced material schedule will be provided for the sections east of the Terminus.

The Guaranteed Maximum Price is based on Infracore providing irrevocable vested ownership of these materials and equipment in favour of CEC, including transfer of title, risk and custody at a date which shall not exceed the Section C, Sectional Completion Date identified on the Programme, Revision 1- refer to activity ID 1000 of the Programme. For clarity, this is the latest date at which the last material or equipment should have been incorporated into the Works under the Programme, Revision 1.

The Guaranteed Maximum Price is predicated on the "Project Carlisle Change order allowing the immediate payment, per the itemised material schedule and within 60 days after physical delivery to the projects warehouse, of each and every such material and equipment for the sections east of Terminal Point.

The Guaranteed Maximum Price includes for warranty for all the above materials and equipment, for a warranty period expiring on 10 March 2013, i.e. two years after the Section C, Sectional Completion Date identified on the Programme, Revision 1.

Due to missing timeframes, cost for storage of the materials and equipment after providing irrevocable vested ownership as defined above is excluded from the Guaranteed Maximum Price. Siemens do not have long term arrangements beyond the Section C, Sectional Completion Date identified on the Programme; Revision 1 for its outsourced storage facilities in the Edinburgh area, the Guaranteed Maximum Price only includes cost for storage of the materials and equipment at Siemens' own or subcontracted onshore and/or offshore facilities, for the above, until that date.

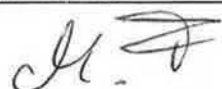
Tram Supply;

The Guaranteed Maximum Price includes for all costs incurred by CAF in storing trams at their factory in Spain (Option 1), and all other related costs (insurance, warranties etc) in accordance with Project Carlisle (See Appendix 1.3).

Designs Services (SDS)

Included in the Guaranteed Maximum Price is the cost for the preparation of all known works that the SDS Provider is currently aware of to complete the current scope. This includes the outstanding works relating to the original SDS design, design that has been subject to changes due to the alignment workshop process, changes requested by Infracore and changes driven by revised requirements from third party stakeholders and approvals bodies such as City of Edinburgh Council, tie, BAA, Forth Ports etc.

Also included in Appendix 1.4 CD, is a schedule of potential tie Changes that have been initiated, but for which, at the time of preparation of the Guaranteed Maximum Price, the scope was undefined. In these areas no instruction has been issued by tie. In most cases these tie Changes impact on a design that is complete, and compliant with the Employer's Requirements and the requirements of the Tram Design Manual, Third Party Agreements, CEC Standards and other core reference materials. These changes, if instructed, will result in changes to the GMP Drawings.

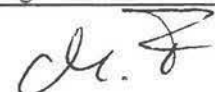


For the sake of clarity, these tie Changes have been excluded from the Guaranteed Maximum Price scope as it is recognised that it is entirely within the gift of tie to choose not to amend the current design presented and thereby mitigating cost and programme impact. Having reviewed the potential tie Changes for cost and programme savings we can see no added benefit in adopting the changes proposed in this schedule.

In preparing the Guaranteed Maximum Price, SDS has assumed that there will be no further changes required to the design, above and beyond those identified on the attached change schedules and as noted above. Given the exhaustive consultation approach that has been adopted with the relevant approvals bodies and the number of iterations of design that have been produced, comments received and subsequently incorporated, SDS believe the design to be robust and that all outstanding Technical and Prior Approvals could and should be granted by the relevant departments of the Approvals bodies without further change to the design. As such no allowance has been made for further design change in the production of the Guaranteed Maximum Price.

Specifically excluded from the Guaranteed Maximum Price are the following issues that at one point or another have been discussed, but not formalised or progressed by the Parties:

1. Stage E Landscape Drawings as per CEC Informative and Meeting held in September 2009;
2. South Gyle Access Bridge Detailed Design beyond Changes in S26 and W11 detailed in design as per DCR0133 feasibility report;
3. Tower Place Bridge design to reflect the removal of the ramp, concrete downstand, or revisions to the OLE, as per RDC154;
4. Forth Ports Section 1A fence alterations due to additional constraints in the Casino area;
5. Advanced Directional Signing for Constitution Street to address additional signs;
6. Lindsay Road phone mast construction conflicts;
7. Mounting of sign plates on buildings and railings;
8. Roseburn Street Viaduct curtain walls in lieu of the current fencing proposal at each abutment;
9. Murrayfield Tramstop Layout Changes to bollards, fence, and turnstiles;
10. Elder Street Junction redesign;
11. Picardy Place Detailed Design as per DCR0173 and DCR0221
12. Pedestrian Guardrail Changes;
13. Gogar Interchange name change to Edinburgh Gateway;
14. Relocation of the combined sewer at Gogar interchange.



Completion Dates and Liquidated Damages

Liquidated Damages will apply at the Infraco Contract rates and as per the terms of the Infraco Contract. However, the Planned Sectional Completion Dates are as identified in GMP Programme in Appendix 5 and are defined in the Executive Summary.

Liquidated Damages associated with tram delivery / tram commissioning in the Tram Supply Novation Agreement, the Tram Supply Agreement, and the Infraco Contract shall not apply any more, since the necessary progress of the tram delivery and tram commissioning has been included in the revised dates for the Planned Sectional Completion. The agreed commissioning dates for the Trams should be linked in the completion dates.

Schedule Part 4 Pricing Assumptions

We believe that a joint review of the existing Specified Exclusions and Pricing Assumptions in Schedule part 4 is required to enable agreement to be reached on a substantially reduced list.

Maintenance

The maintenance GMP is based on the current design as detailed in the GMP Drawings. If this is later subject to a Change Order, including any change to the agreed split of responsibilities within Schedule Part 2, then this shall be valued in accordance with clause 80.6.

The GMP is based on the assumption that the total maintenance period does not exceed 10 years starting with the service commencement date for Section D (as described in Appendix 5.2).

In view of the Project Carlisle revisions, we do not believe that certain conditions remain appropriate and we therefore we would like to review and to discuss the incorporation of the following points with respect to the Maintenance Services:

1. Removal of the voluntary termination by tie clause (89), which leads to a 10 year maintenance contract period.
2. Removal of the cap applicable to indexation on Spare Parts and infrastructure mobilization amounts, currently capped at a maximum aggregate amount of 50,000GBP.
3. Indexation: shall be for the full scope of maintenance, including mobilisation and initial spares.
4. Introduction of a Benchmarking point (at 5 years) regardless of whether there is any change in applicable law.
5. Renegotiation of Liability caps, as defined in Schedule Part 1, in the Maintenance Cap .



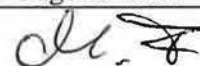
Maintenance Pricing

To reflect the Maintenance programming modifications required by Project Carlisle the Maintenance Pricing requires adjustment. The following Table identifies the Maintenance Pricing categories and Revised Amounts. Tram Maintenance and Mobilisation is included in the price provided by CAF, see APPENDIX 1.3 -CAF - Guaranteed Maximum Price Breakdown.

Maintenance Pricing

Infraco	Value
Infraco Maintenance limited to scope as defined in Infraco "Project Carlisle" Proposal	£25,133,013.00
Infraco Maintenance Mobilisation	£1,782,292.00
Infraco Maintenance	£26,915,305.00
Infraco Spare Parts	£1,013,090.00
Total Infraco	£27,928,395.00
CAF	Value
Tram Maintenance	TBA
Maintenance Mobilization	£2,275,806.00
Total CAF	TBA

TBA = To Be Adjusted by CAF/Tie when Km/year of operation is decided (it is presumed that the total amount will be below the minimum foreseen in Tram Maintenance Agreement table for price adjustment according to distance and will therefore require an agreement of the price per kilometre. If that is not the case, TMA prices will be applied)



APPENDIX 5

INFRACO PROJECT CARLISLE PROGRAMME

- 5.0 Narrative
- 5.1 GMP Programme
- 5.2 Sectional Completion Dates

5.0 Narrative

General

The start date (data date) of the programme is 12 July 2010. For work activities currently under construction their actual progress at 12 July 2010 is taken as the start point of the programme.

Our programme for the works recognises the allowed working hours stated in the Code of Construction Practice of 0700 to 1900 Monday to Friday and 0800 to 1300 on a Saturday. However a 40 hour effective working week has been used to calculate the duration of activities to take account of rest breaks, un-exceptional weather delays and travel between work sites. However construction work will be required outside the hours stated in the Code of Construction Practice for Rail Possessions, work on busy road junctions, works associated with piling at the A8 underpass, stringing catenary cables etc. Prior approval will be sought for such works in accordance with the tender documents and the programme assumes that such approval will be granted as necessary to maintain the Programme. Assumptions and factual statements upon which the Programme has been prepared are as set out in this document. General assumptions are as follows.

Version 59 of the SDS design programme has been used to establish milestone dates for the Issue for Construction drawings. We have assumed that there will be no amendments to the SDS design programme.

The programme is based on MUDFA having completed all works and all utilities being diverted that would conflict with INFRACO operations.

The scope of work considered is that for and set out in this Proposal. Therefore, this programme as set out in Appendix 5 was set up only with regard to the Project Carlisle Proposal and based upon the scope provided herein.

Section Completion Dates

Section 1A

The programme for the enabling works at Newhaven which includes Lindsay Road Retaining Wall and the lowering of Lindsay Road is an extract of the relevant sections of the proposed Programme Revision 3A. The construction sequence therefore relies upon the availability of the Forth Ports diversion road. This diversion route permits the simultaneous construction of Lindsay Road Retaining Wall W1A and the lowering of Lindsay Road whilst still maintaining traffic flows.

The GMP Programme assumes a commencement of work on 16 August 2010 for the lowering of Lindsay Road, any late commencement may impact the sectional completion date.

The Programme assumes that all necessary Utility diversions have been completed in this area prior to the Infraco Works commencing.



The GMP Programme assumes that all 3rd Party approvals / licences will be in place for these works to commence in accordance on 3 August 2010, any late commencement may impact the sectional completion date.

The programme for Tower Place Bridge enabling works is extracted from the Programme Revision 3A and progressed to 12 July 2012. The programme only accounts for the tie relocation of utilities from North to South. Any delay in relocating the utilities, or additional works undertaken by tie may impact the sectional completion date.

Section 1C / 1D

The GMP Programme assumes that the terminal point for the works is the east end of Princes Street where the tracks are currently constructed to.

The programme for the track works from Lothian Road to Haymarket is extracted from the OSSA programmes.

The GMP Programme assumes commencement of the on street works between Lothian Road and Haymarket work on 6 September 2010, any late commencement may impact the sectional completion date.

The programme assumes that the all necessary utilities will be diverted and all approvals/ licences in place to enable these works to commence on 6 September 2010.

Work scope now allows for:

- Additional excavation and construction to full depth including a 600mm capping layer and disposal of surplus material.
- Traffic Management and access issues related to the loss of working street width as a result of increased excavation depth.
- Support to excavations due to adjacent live traffic.
- Ground improvements beneath the track slab.
- Protection of existing ductwork exposed as a result of the increased depth of excavation.
- Addition of an RC Improvement Slab.
- Additional traffic management constraints, parking bays, bus stops, and taxi bays within working areas.

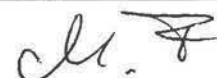
Pedestrian traffic will be catered for by controlled crossing points at specified locations, yet to be mapped.

The works are scheduled with no risk allowances for the condition of the street handed over after MUDFA/Utility Works.

Full construction depth is allowed for in the programme, but issues with services conflicts as a result are not allowed for in the plan.

The Works are also not scheduled with any risk allowances for unforeseen issues e.g. below ground obstructions, voids, soft or contaminated material

The programme is planned using a 5 day effective working week and the phasing of the works is in accordance with current approved traffic management schemes. Calendars include August and Christmas Embargo periods together with site holidays, but no shutdown for summertime trades holidays (2 weeks).



No demobilization and remobilization periods have been incorporated into the GMP Programme around embargo dates, as that the work areas will be secured utilizing the protective fencing and security services.

All the construction programmes assume that all MUDFA/Utility Works within the Works Areas are complete by the planned Commencement Dates. We understand that a "Utilities Conflict Schedule" is available; however no allowance for these activities is included. Any delays resulting from this may have a considerable effect on construction periods.

Section 2A

The GMP Programme assumes a commencement date of 9 August 2010 for the removal and replacement of soft ground, any late commencement may impact the sectional completion date.

Section 5A

Detailed programmes are available for all structures. The GMP Programme shows summaries of these programmes.

The construction works in general are subject to Network Rail approval. An eight week (plus three week "cooling off period") has been assumed for all Network Rail form C approvals. A four week (plus three week "cooling off period") has been allowed for the approval of all Works Package plans. The programme generally shows the latest dates for these approvals.

The GMP Programme assumes tie will procure all necessary approvals to allow the commencement of demolition in Plots 96, 97, 101 & 102, before 9 August 2010, any late commencement may impact the sectional completion date.

Section 5B

The GMP Programme assumes a commencement date of 30 August 2010 for the track drainage works in Section 5B, any late commencement may impact the sectional completion date.

Section 5C

The GMP Programme assumes a commencement date of 30 August 2010 for the track drainage works in Section 5C, any late commencement may impact the sectional completion date.

The completion of the track and M & E works at the depot is dependent on the completion of the depot access bridge superstructure. The Programme assumes that the works to the depot access bridge will be accelerated to 7 days a week working from the 1 September 2010.

Section 6A

No comments.



Section 7A

The Programme assumes that the settlement period for the Gogar Landfill Site will be limited to 3 months.

The Programme also assumes that BAA will grant a licence for works on their land to recommence on 24 August 2010.

Revisions to the W14 Retaining Wall, received on 16 July 2010, have required re-pricing by BSC, Sub Contractors, and Material Suppliers. At this time we believe the responsible response to this change is to include in the GMP the Conceptual Price provided by one Sub Contractor who is experienced in piling operations, of approximately £7MIO. This price is contingent upon the redesign of the piling components (Jumbo 610x36 pipe) to incorporate a more commonly available piling product (762x20 pipe). Additionally, the material will require delivery from Turkey. As such, the GMP shall be based upon these assumptions and risks, however should any of the assumptions change, Infracore reserves the right to revise the costs associated with this area of work.

Immediate Action Items

There are a number of time critical activities which require procurement of authorizations as well as procurement of long lead time materials. We propose to meet with you to discuss this particular issue, as well as similar issues, within the next few days in an effort to find an agreeable solution to avoid unnecessary impacts to the Programme. The following list is not all inclusive:

1. Commencement of work at Lindsay Road in Section 1A by 9 August 2010.
2. Removal and replacement of soft ground in Section 2A by 9 August 2010.
3. Permit to begin demolition in Section 5A by 9 August 2010.
4. Commencement of track drainage work in Section 5B and 5C by 30 August 2010.
5. Recommencement of work on BAA lands in Section 7A by 24 August 2010.
6. Finalisation of design to allow procurement of piling materials for Wall 14 C no later than 9 August 2010 to facilitate a 12 week fabrication and delivery requirement.



APPENDIX 5.1

INFRACO GMP PROGRAMME

See Attached Supplemental Information CD:

Appendix 5.1 – GMP Programme:
Project Carlisle Revision 00 (100729)
EDINBURGH TRAM NETWORK
Date 29-Jul-10
Pages 1 to 44

A handwritten signature in black ink, appearing to be 'M. T.', located at the bottom right of the page.

Activity ID	Activity Name	Original Duration	Start	Finish	Total Float	2011												2012												2013											
						Jul	A	S	Oct	N	D	Jan	F	M	Apr	M	J	Jul	A	S	Oct	N	D	Jan	F	M	Apr	M	J	Jul	A	S	Oct	N	Dec	Jan	F				
Project Carlisle Programme (100729)						19-Nov-12																																			
KEY DATES						19-Nov-12																																			
1000	Deliver/ handover of all Siemens material to tie	0d	10-Mar-11	10-Mar-11	0d	◆ Deliver/ handover of all Siemens material to tie																																			
313	Section Completion A	0d	24-May-11	24-May-11	375d	◆ Section Completion A																																			
314	Section Completion B	0d	15-Sep-11	15-Sep-11	296d	◆ Section Completion B																																			
281	Construction Completion Phase 1a Edinburgh Airport to Haymarket	0d	22-May-12	22-May-12	1d	◆ Construction Completion Phase 1a;Ed																																			
315	Section Completion C	0d	20-Aug-12	20-Aug-12	1d	◆ Section Completion C																																			
310	Commencement of Revenue Service Phase 1a Edinburgh Airport to Haymarket	0d	19-Nov-12	19-Nov-12	0d	◆ Commences																																			
325	Section Completion D	0d	19-Nov-12	19-Nov-12	0d	◆ Section Cor																																			
COMMISSIONING PHASE EDINBURGH AIRPORT TO HAYMARKET						18-Nov-12																																			
300	System Integration Test; Phase 1a Edinburgh Airport to Haymarket	30d	22-May-12	21-Jun-12	1d	◆ System Integration Test																																			
301	Test Running and Driver Familiarisation; Phase 1a Edinburgh Airport to Haymarket	30d	21-Jun-12	21-Jul-12	1d	◆ Test Running and Driver Familiarisation																																			
302	T1 Post Commissioning Test completed; Phase 1a Edinburgh Airport to Haymarket	0d	21-Jul-12	21-Jul-12	1d	◆ T1 Post Commissioning Test																																			
302.1	Test Running and Driver familiarisation performance ramp up 1a Airport to Haymarket	30d	21-Jul-12	20-Aug-12	1d	◆ Test Running and Driver familiarisation performance ramp up																																			
302.2	T2 Performance Test completed; Phase 1a Edinburgh Airport to Haymarket	0d	20-Aug-12	20-Aug-12	1d	◆ T2 Performance Test com																																			
302.3	Approval of HMRI; Phase 1a Edinburgh Airport to Haymarket	0d	20-Aug-12	20-Aug-12	1d	◆ Approval of HMRI; Phase																																			
302.4	Shadow running; Phase 1a Edinburgh Airport to Haymarket	90d	20-Aug-12	18-Nov-12	1d	◆ Shadow running; Phase 1a Edinburgh Airport to Haymarket																																			
302.5	T3 Pre-Operations Test Completed; Phase 1a Edinburgh Airport to Haymarket	0d	18-Nov-12	18-Nov-12	1d	◆ T3 Pre-Oper																																			
TRAM DELIVERY & COMMISSIONING						18-May-12, TRAM DELIVERY & COMMISSIONING																																			
Deliver & Commission First Tram						15-Sep-11, Deliver & Commission First Tram																																			
CAF-01(3)	Depot available for delivery of first Tram	0d	04-May-11	04-May-11	166d	◆ Depot available for delivery of first Tram																																			
CAF-02(3)	1st Tram Delivery & Inspection	1d	04-May-11	04-May-11	166d	◆ 1st Tram Delivery & Inspection																																			
CAF-03(3)	Commission First Tram	40d	21-Jul-11	15-Sep-11	131d	◆ Commission First Tram																																			
Deliver & Commission Remaining 26 Trams						18-May-12, Deliver & Commission Remaining 26 Trams																																			
CAF-04(3)	2nd Tram Delivery	0d	18-Aug-11	18-Aug-11	307d	◆ 2nd Tram Delivery																																			
CAF-05(3)	2nd Tram Commissioning	20d	18-Aug-11	15-Sep-11	307d	◆ 2nd Tram Commissioning																																			
CAF-06(3)	3rd Tram Delivery	0d	18-Aug-11	18-Aug-11	307d	◆ 3rd Tram Delivery																																			
CAF-07(3)	3rd Tram Commissioning	20d	18-Aug-11	15-Sep-11	307d	◆ 3rd Tram Commissioning																																			
CAF-08(3)	4th Tram Delivery	0d	18-Aug-11	18-Aug-11	307d	◆ 4th Tram Delivery																																			
CAF-09(3)	4th Tram Commissioning	20d	18-Aug-11	15-Sep-11	307d	◆ 4th Tram Commissioning																																			
CAF-10(3)	5th Tram Delivery	0d	18-Aug-11	18-Aug-11	131d	◆ 5th Tram Delivery																																			
CAF-11(3)	5th Tram Commissioning	20d	18-Aug-11	15-Sep-11	131d	◆ 5th Tram Commissioning																																			
CAF-12(3)	6th Tram Delivery	0d	26-Sep-11	26-Sep-11	285d	◆ 6th Tram Delivery																																			
CAF-13(3)	6th Tram Commissioning	15d	26-Sep-11	17-Oct-11	285d	◆ 6th Tram Commissioning																																			
CAF-14(3)	7th Tram Delivery	0d	26-Sep-11	26-Sep-11	131d	◆ 7th Tram Delivery																																			
CAF-15(3)	7th Tram Commissioning	15d	26-Sep-11	17-Oct-11	131d	◆ 7th Tram Commissioning																																			
CAF-16(3)	8th Tram Delivery	0d	26-Oct-11	26-Oct-11	263d	◆ 8th Tram Delivery																																			
CAF-17(3)	8th Tram Commissioning	15d	26-Oct-11	16-Nov-11	263d	◆ 8th Tram Commissioning																																			
CAF-18(3)	9th Tram Delivery	0d	26-Oct-11	26-Oct-11	263d	◆ 9th Tram Delivery																																			
CAF-19(3)	9th Tram Commissioning	15d	26-Oct-11	16-Nov-11	263d	◆ 9th Tram Commissioning																																			
CAF-20(3)	10th Tram Delivery	0d	26-Oct-11	26-Oct-11	131d	◆ 10th Tram Delivery																																			
CAF-21(3)	10th Tram Commissioning	15d	26-Oct-11	16-Nov-11	131d	◆ 10th Tram Commissioning																																			

Date	Revision	Checked	Approved
29-Jul-10	Project Carlisle Programme	SSC/MHE	BSC

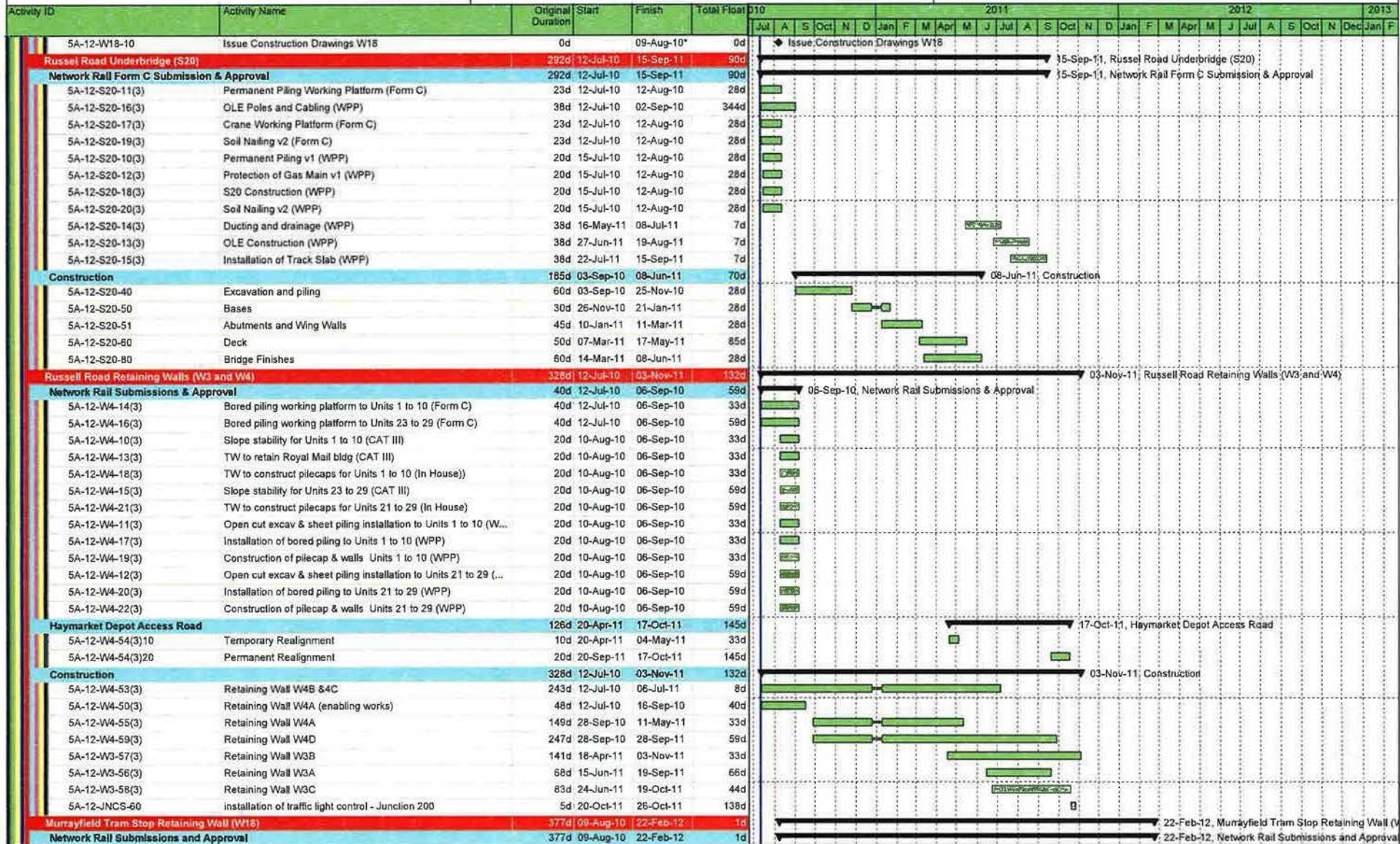
CEC00183919_0073

Activity ID	Activity Name	Original Duration	Start	Finish	Total Float	2011												2012												2013											
						Jul	A	S	Oct	N	D	Jan	F	M	Apr	M	J	Jul	A	S	Oct	N	D	Jan	F	M	Apr	M	J	Jul	A	S	Oct	N	Dec	Jan	F				
1A-24-5B-1000	Establish temporary traffic management	1d	16-Aug-10	17-Aug-10	230d																																				
1A-24-5B-1010	Site clearance	5d	17-Aug-10	24-Aug-10	230d																																				
1A-24-5B-1020	Investigate services / outfall positions / inlet-outlet positions / levels	1d	24-Aug-10	25-Aug-10	230d																																				
LINDSAY ROAD (WESTBOUND)						17-Jan-11, LINDSAY ROAD (WESTBOUND) ◆ COMMENCE ROAD WORKS (LINDSAY ROAD-WESTBOUND) ◆ ROAD WORKS COMPLETE (LINDSAY ROAD)																																			
1A-24-5B-1030	COMMENCE ROAD WORKS (LINDSAY ROAD-WESTBOU...	0d	25-Aug-10		230d																																				
1A-24-5B-1040	ROAD WORKS COMPLETE (LINDSAY ROAD)	0d		17-Jan-11	230d																																				
WESTBOUND						11-Jan-11, WESTBOUND																																			
1A-24-5B-1050	Remove existing footway	5d	25-Aug-10	01-Sep-10	230d																																				
1A-24-5B-1060	Plane Main Carriageway & Footway	5d	01-Sep-10	08-Sep-10	230d																																				
1A-24-5B-1070	Plane/break/lower / excavate to Formation (Lindsay Road)	49d	08-Sep-10	16-Nov-10	230d																																				
1A-24-5B-1080	Capping layer (600mm)	49d	09-Sep-10	17-Nov-10	232d																																				
1A-24-5B-1090	Drainage and Outfalls	49d	10-Sep-10	18-Nov-10	230d																																				
1A-24-5B-1100	Ducts and Chambers	49d	10-Sep-10	18-Nov-10	230d																																				
1A-24-5B-1110	Kerbing	10d	15-Nov-10	30-Nov-10	232d																																				
1A-24-5B-1120	Footpath Works	27d	18-Nov-10	11-Jan-11	230d																																				
SURFACING						06-Dec-10, SURFACING																																			
1A-24-5B-1130	220mm Sub-base	1d	30-Nov-10	01-Dec-10	248d																																				
1A-24-5B-1140	225mm Base	1d	01-Dec-10	02-Dec-10	248d																																				
1A-24-5B-1150	60mm Binder Course	1d	02-Dec-10	03-Dec-10	248d																																				
1A-24-5B-1160	35mm Surface Course - Main Carriageway and Boundary	1d	03-Dec-10	06-Dec-10	248d																																				
ROAD FINISHING						17-Jan-11, ROAD FINISHING																																			
1A-24-5B-1170	Road Signs and Markings	1d	06-Dec-10	07-Dec-10	248d																																				
1A-24-5B-1180	Landscaping	9d	20-Dec-10	14-Jan-11	230d																																				
1A-24-5B-1190	Remove temporary traffic management	1d	14-Jan-11	17-Jan-11	230d																																				
COMMISSIONING AND TESTING						24-Jan-11, COMMISSIONING AND TESTING ◆ Start remaining E&M works along track																																			
1A-24-5B-TEST-100	Handover / Acceptance of Roadworks and Trackworks	5d	17-Jan-11	24-Jan-11	230d																																				
1A-24-5B-TEST-110	Start remaining E&M works along track	0d	24-Jan-11		332d																																				
TTM PHASE 5A (LINDSAY ROAD EAST BOUND)						20-Jun-11, TTM PHASE 5A (LINDSAY ROAD EAST BOUND) ◆ TTM - PHASE 5A - Lindsay Road WB closed ◆ TTM PHASE 5A COMPLETE																																			
1A-24-TTM-05A-1000	TTM - PHASE 5A - Lindsay Road WB closed	0d	24-Jan-11		230d																																				
1A-24-TTM-05A-1010	TTM PHASE 5A COMPLETE	0d		20-Jun-11	230d																																				
TEMPORARY AND PRELIMINARY WORKS						09-Feb-11, TEMPORARY AND PRELIMINARY WORKS																																			
1A-24-5A-1000	Establish temporary traffic management	1d	24-Jan-11	25-Jan-11	230d																																				
1A-24-5A-1010	Site clearance	10d	25-Jan-11	08-Feb-11	230d																																				
1A-24-5A-1020	Investigate services / outfall positions / inlet-outlet positions / levels	1d	08-Feb-11	09-Feb-11	230d																																				
Lindsay Road Retaining Wall W1B						12-Apr-11, Lindsay Road Retaining Wall W1B 10-Feb-11, Preliminary works & excavation																																			
Preliminary works & excavation																																									
1A-24-5A-W1B-100	Mobilisation, site installation and temporary fencing	1d	24-Jan-11	25-Jan-11	239d																																				
1A-24-5A-W1B-110	Demolition	10d	25-Jan-11	08-Feb-11	239d																																				
1A-24-5A-W1B-120	Excavation	2d	08-Feb-11	10-Feb-11	239d																																				
RW Structure						10-Mar-11, RW Structure																																			
1A-24-5A-W1B-130	RW Foundation	9d	10-Feb-11	23-Feb-11	239d																																				
1A-24-5A-W1B-140	RC Wall	11d	23-Feb-11	10-Mar-11	239d																																				
RW Finishing Works and Backfilling						12-Apr-11, RW Finishing Works and Backfilling																																			
1A-24-5A-W1B-150	Waterproofing	2d	10-Mar-11	14-Mar-11	239d																																				
1A-24-5A-W1B-160	Drainage	5d	14-Mar-11	21-Mar-11	239d																																				
1A-24-5A-W1B-170	Stone drainage trench	2d	21-Mar-11	23-Mar-11	239d																																				
1A-24-5A-W1B-190	Brickwork	2d	21-Mar-11	23-Mar-11	239d																																				
1A-24-5A-W1B-180	Backfill and compact	1d	23-Mar-11	24-Mar-11	239d																																				

Date	Revision	Checked	Approved	Page 4 of 44	Remaining Work Critical Remaining Work Summary Actual Work Milestone
29-Jul-10	Project Carlisle Programme	SSC/MHE	BSC		

CEC00183919_0076

Handwritten signature



Handwritten signature/initials

CEC00183919_0097

Activity ID	Activity Name	Original Duration	Start	Finish	Total Float	2011												2012					2013															
						Jul	A	S	Oct	N	D	Jan	F	M	Apr	M	J	Jul	A	S	Oct	N	D	Jan	F	M	Apr	M	J	Jul	A	S	Oct	N	Dec	Jan	F	
5A-12-W18-11	W18 Construction v1 (WPP)	20d	09-Aug-10	06-Sep-10	7d																																	
5A-12-W18-14	Installation of Track Slab (WPP)	20d	04-Feb-11	04-Mar-11	7d																																	
5A-12-W18-16	Tramstop Construction (WPP)	20d	19-May-11	17-Jun-11	36d																																	
5A-12-W18-13	Ducting and drainage (WPP)	20d	10-Jun-11	08-Jul-11	7d																																	
5A-12-W18-12	OLE Construction (WPP)	20d	18-Aug-11	15-Sep-11	7d																																	
5A-12-W18-15	OLE Poles and Cabling (WPP)	20d	26-Jan-12	22-Feb-12	1d																																	
Construction		225d	09-Aug-10	08-Jul-11	7d																																	
5A-12-W18-02	Building Warrant Approval	0d	09-Aug-10*		8d	◆ Building Warrant Approval																																
5A-12-W18-21	demolish and rebuild	34d	09-Aug-10	24-Sep-10	8d																																	
5A-12-W18-01	Commence Works	0d	24-Sep-10*		8d	◆ Commence Works																																
5A-12-W18-31(3)	Site Clearance	20d	27-Sep-10	25-Oct-10	7d																																	
5A-12-W18-81(3)	North Main Stairs Wall	85d	27-Sep-10	08-Feb-11	52d																																	
5A-12-W18-50(3)	Foundations	15d	25-Oct-10	15-Nov-10	7d																																	
5A-12-W18-51(3)	Reinforced Earth Wall	130d	15-Nov-10	03-Jun-11	7d																																	
5A-12-W18-82(3)	North Main Stairs	80d	08-Feb-11	05-May-11	52d																																	
5A-12-W18-52(3)	Coping	15d	03-Jun-11	24-Jun-11	7d																																	
5A-12-W18-80(3)	Handrail	10d	24-Jun-11	08-Jul-11	7d																																	
Trackwork (470m)		146d	08-Jul-11	15-Feb-12	70d																																	
5A-12-TRCK-30	Sub Base	15d	08-Jul-11	29-Jul-11	7d																																	
5A-12-TRCK-50	Drainage	29d	29-Jul-11	09-Sep-11	7d																																	
5A-12-TRCK-51(3)	OLE Foundations & Ducts	19d	09-Sep-11	06-Oct-11	7d																																	
5A-12-TRCK-40	Track Slab	47d	06-Oct-11	13-Dec-11	7d																																	
5A-12-TRCK-70	Track Laying (470m) + mob	20d	13-Dec-11	24-Jan-12	7d																																	
5A-12-SIGN-60	wayside preparation for loops(0) and boxes(1)	1d	23-Jan-12	24-Jan-12	86d																																	
5A-12-TRCK-80	Track Finishes	16d	24-Jan-12	15-Feb-12	7d																																	
Murrayfield Stadium Tram Stop		424d	12-Jul-10	03-Apr-12	164d																																	
5A-12-TRMS-20	wayleave issued	0d	12-Jul-10		355d	◆ wayleave issued																																
5A-12-TRMS-90(3)	Civil Engineering and Building Works	130d	08-Jul-11	24-Jan-12	36d																																	
5A-12-TRMS-30	Access for visual inspection for E&M Tram Stop installation (05A Murrayfield)	0d	18-Nov-11		261d	◆ Access for visual inspection for E&M Tram Stop installation (05A Murrayfield)																																
5A-12-TRMS-40	Deliver and Install Shelter	10d	06-Dec-11	20-Dec-11	36d																																	
5A-12-TRMS-31	Access for E&M Tram Stop installation (05A Murrayfield)	0d	20-Dec-11		56d	◆ Access for E&M Tram Stop installation (05A Murrayfield)																																
5A-12-TRMS-45	Deliver and Install cubicle	10d	20-Dec-11	17-Jan-12	36d																																	
5A-12-TRMS-50	Install LV Power Supply and LV Power Equipment	25d	17-Jan-12	21-Feb-12	36d																																	
5A-12-TRMS-70	Install Telecon Equipment	20d	21-Feb-12	20-Mar-12	41d																																	
5A-12-TRMS-60	Install Station Control Equipment + AFC Equipment	25d	21-Feb-12	27-Mar-12	36d																																	
5A-12-TRMS-80	Package Test Tramstop	5d	27-Mar-12	03-Apr-12	36d																																	
Murrayfield Stadium (exc.) to Balgreen Road (inc.)		415d	12-Jul-10	20-Mar-12	173d																																	
Design		0d	08-Aug-10	09-Aug-10	211d																																	
5A-11-S21B-10(3)	Issue Construction Drawings 21B	0d	09-Aug-10*		55d	◆ Issue Construction Drawings 21B																																
5A-11-S21A-10(3)	Issue Construction Drawings S21A RC Portal Bridge	0d	09-Aug-10*		71d	◆ Issue Construction Drawings S21A RC Portal Bridge																																
5A-11-S21A-20(3)	Issue Construction Drawings S21A Steel Composite Bridge	0d	09-Aug-10*		61d	◆ Issue Construction Drawings S21A Steel Composite Bridge																																
5A-11-S21A-30(3)	Issue Construction Drawings S21A RE Structure S501	0d	09-Aug-10*		211d	◆ Issue Construction Drawings S21A RE Structure S501																																
5A-11-S21A-40(3)	Issue Construction Drawings S21A RE Structure S503	0d	09-Aug-10*		211d	◆ Issue Construction Drawings S21A RE Structure S503																																
5A-11-S21A-50(3)	Issue Construction Drawings S221A RE Structure S505	0d	09-Aug-10*		191d	◆ Issue Construction Drawings S221A RE Structure S505																																
Roseburn Street Viaduct (S21A)		362d	09-Aug-10	01-Feb-12	79d																																	
Network Rail Submissions & approval		362d	09-Aug-10	01-Feb-12	1d																																	
5A-11-S21A-16(3)	S504 Piling Working Platform (Form C)	40d	09-Aug-10	04-Oct-10	61d																																	
5A-11-S21A-13(3)	S502 Piling Working Platform (Form C)	40d	23-Aug-10	18-Oct-10	61d																																	

Date	Revision	Checked	Approved
29-Jul-10	Project Carlisle Programme	SSC/MHE	BSC

■ Remaining Work
 ■ Critical Remaining Work
 Summary
◆ Actual Work
 ◆ Milestone

CEC00183919_0098

Activity ID	Activity Name	Original Duration	Start	Finish	Total Float	2011												2012												2013							
						Jul	A	S	Oct	N	D	Jan	F	M	Apr	M	J	Jul	A	S	Oct	N	D	Jan	F	M	Apr	M	J	Jul	A	S	Oct	N	Dec	Jan	F
7A-04-SUBS-31	Access for E&M Substation installation (07A Ingliston Park and Ride)	0d	07-Feb-11		188d	◆ Access for E&M Substation installation (07A Ingliston Park and Ride)																															
7A-04-SUBS-40	Power Infeed from Public Net available inc HV cable	0d	28-Feb-11		183d	◆ Power Infeed from Public Net available inc HV cable																															
7A-04-SUBS-45	Install HV Power Supply and Equipment (SP)	15d	28-Feb-11	18-Mar-11	183d																																
7A-04-SUBS-50	Install LV Power Supply and LV Power Equipment	15d	21-Mar-11	11-Apr-11	346d																																
7A-04-SUBS-55	Energisation Scottish Power	0d	05-Apr-11		410d	◆ Energisation Scottish Power																															
7A-04-SUBS-70	Install Telecom and Scada	15d	12-Apr-11	03-May-11	346d																																
7A-04-SUBS-60	Installation of TPS Equipment	30d	04-May-11	15-Jun-11	346d																																
7A-04-SUBS-80	Testing and Commissioning	14d	16-Jun-11	05-Jul-11	346d																																
Tram		20d	19-Aug-11	16-Sep-11	295d	▼ 16-Sep-11, Tram																															
07-04-TRAM-20	Track Testing of Tram	20d	19-Aug-11	16-Sep-11	295d																																
Ingliston Park & Ride (exc.) to Edinburgh Airport (inc.)		298d	12-Jul-10	23-Sep-11	290d	▼ 23-Sep-11, Ingliston Park & Ride (exc.) to Edinburgh Airport (inc.)																															
Design		0d	12-Jul-10	12-Jul-10	588d	▼ 12-Jul-10, Design																															
7A-05-TRCK-10	Issue Construction Drawings Trackwork (New Ingliston Ltd)	0d	12-Jul-10	12-Jul-10*	588d	◆ Issue Construction Drawings Trackwork (New Ingliston Ltd)																															
7A-05-TRCK-20	Issue Construction Drawings Gogarburn RWs Redesign	0d	12-Jul-10	12-Jul-10*	119d	◆ Issue Construction Drawings Gogarburn RWs Redesign																															
Trackwork (833m)		255d	12-Jul-10	25-Jul-11	333d	▼ 25-Jul-11, Trackwork (833m)																															
7A-05-TRCK-70	Track Laying (833m)	30d	06-May-11	20-Jun-11	119d																																
7A-05-SIGN-70	point machine mechanical set up	20d	06-May-11	06-Jun-11	127d																																
7A-05-SIGN-60	wayside preparation for loops(4) and boxes(12)	10d	06-Jun-11	20-Jun-11	230d																																
7A-05-TRCK-76	Top Ballast	10d	16-Jun-11	30-Jun-11	119d																																
7A-05-JNCS-60	installation of traffic light control - Junction 210	4d	20-Jun-11	24-Jun-11	226d																																
7A-05-TRCK-80	Fencing & Trackside Finishes	17d	30-Jun-11	25-Jul-11	308d																																
Ingliston to Hilton Ch 1750 to 2040		13d	12-Jul-10	28-Jul-10	301d	▼ 28-Jul-10, Ingliston to Hilton Ch 1750 to 2040																															
7A-05-TRCK-60	Drainage	3d	12-Jul-10	14-Jul-10	288d																																
7A-05-TRCK-50	OLE Foundations & Ducts	3d	15-Jul-10	19-Jul-10	300d																																
7A-05-TRCK-40	Sub Base & Ballast	7d	20-Jul-10	28-Jul-10	301d																																
EAL Programme		200d	12-Jul-10	06-May-11	588d	▼ 06-May-11, EAL Programme																															
Phase A (Ch 2040 to 2200)		18d	15-Jul-10	10-Aug-10	298d	▼ 10-Aug-10, Phase A (Ch 2040 to 2200)																															
7A-05-W14A-40(3)	Drainage	5d	15-Jul-10	21-Jul-10	298d																																
7A-05-W14A-45(3)	OLE Foundations / Street Lighting & Ducts	8d	22-Jul-10	03-Aug-10	298d																																
7A-05-W14A-50(3)	Earthworks Finishes sand layer / sub base	5d	04-Aug-10	10-Aug-10	298d																																
Phase B		157d	12-Jul-10	04-Mar-11	431d	▼ 04-Mar-11, Phase B																															
7A-05-W14B-05(3)	Obtain EAL Permit	30d	12-Jul-10	24-Aug-10	162d																																
7A-05-W14B-10(3)	Earthworks (Fill 2300m3, Cut 2900m3, cap 660m3)	22d	24-Aug-10	23-Sep-10	162d																																
7A-05-W14B-15(3)	Drainage	10d	23-Sep-10	07-Oct-10	162d																																
7A-05-W14B-25(3)	Install Temporary Works	5d	23-Sep-10	30-Sep-10	162d																																
7A-05-W14b-20(3)	14b Reinforced Earth Wall	10d	30-Sep-10	14-Oct-10	162d																																
7A-05-W14B-30(3)	14c Reinforced Earth Wall	10d	07-Oct-10	21-Oct-10	162d																																
7A-05-W14B-35(3)	OLE Foundations / Street Lighting	10d	21-Oct-10	04-Nov-10	162d																																
7A-05-W14B-40(3)	Footpath Works	8d	04-Nov-10	16-Nov-10	162d																																
7A-05-W14B-45(3)	Signalised Junction at Eastfield Avenue	8d	16-Nov-10	26-Nov-10	162d																																
7A-05-W14B-50(3)	Earthworks sand / subbase / ballast	7d	26-Nov-10	08-Dec-10	162d																																
7A-05-W14B-55(3)	Crash Barrier Installation	8d	08-Dec-10	20-Dec-10	475d																																
7A-05-W14B-60(3)	Eastfield Avenue	52d	08-Dec-10	04-Mar-11	162d																																
Phase C		200d	12-Jul-10	06-May-11	119d	▼ 06-May-11, Phase C																															
7A-05-W14C-05(3)	Obtain EAL Permit	30d	12-Jul-10	24-Aug-10	119d																																
7A-05-W14C-10(3)	Earthworks (cut 3600m3, Fill 1900m3)	20d	24-Aug-10	21-Sep-10	119d																																
7A-05-W14C-15(3)	Install temporary works	20d	21-Sep-10	19-Oct-10	119d																																
7A-05-W14C-20(3)	14d RC Retaining Wall	98d	19-Oct-10	21-Mar-11	119d																																

Date	Revision	Checked	Approved
29-Jul-10	Project Carlisle Programme	SSC/MHE	BSC

Handwritten signature/initials

APPENDIX 5.2

SECTIONAL COMPLETION DATES

Section	Scope	Target Date	Remarks
A	Section A means completion of the Depot (fully functional including energisation) and the first Tram delivered to the Site and assembled;	24. May 2011	finish of access bridge construction not mandatory for that milestone
B	Section B means completion of the test track functional from the Depot west entry/exit to the airport, and five Trams delivered to the Site and assembled with the first Tram to have completed the Tram Type Test and the remaining Trams to have completed the Tram Commissioning Routine Tests, such tests as described in the Employer's Requirements and the completion of all tests required to enable the commencement of Driver Training;	15. September 2011	Allows one year + shadow running remaining time for driver training - lineside systems fully functional - OCC and radio communication functional only as far as available
C	Section C means the carrying out and completion of the section from Airport to Haymarket and the completion of all tests required by the Employer's Requirements in relation to that Section, including those System Acceptance Tests that must be successfully completed prior to shadow running as provided for in the Employer's Requirements;	End of construction 22. May 2012 End of T&C 20. August 2012	3 month for Testing & Commissioning (OCC and radio communication fully functional)
D	Section D means the completion of shadow running and commencement of revenue service approval obtained and the completion of all tests required by the Employer's Requirements in relation to that Section, including those System Acceptance Tests that must be successfully completed to enable Service Commencement; Tram Commissioning Routine Tests performed for trams	19. November 2012	

