

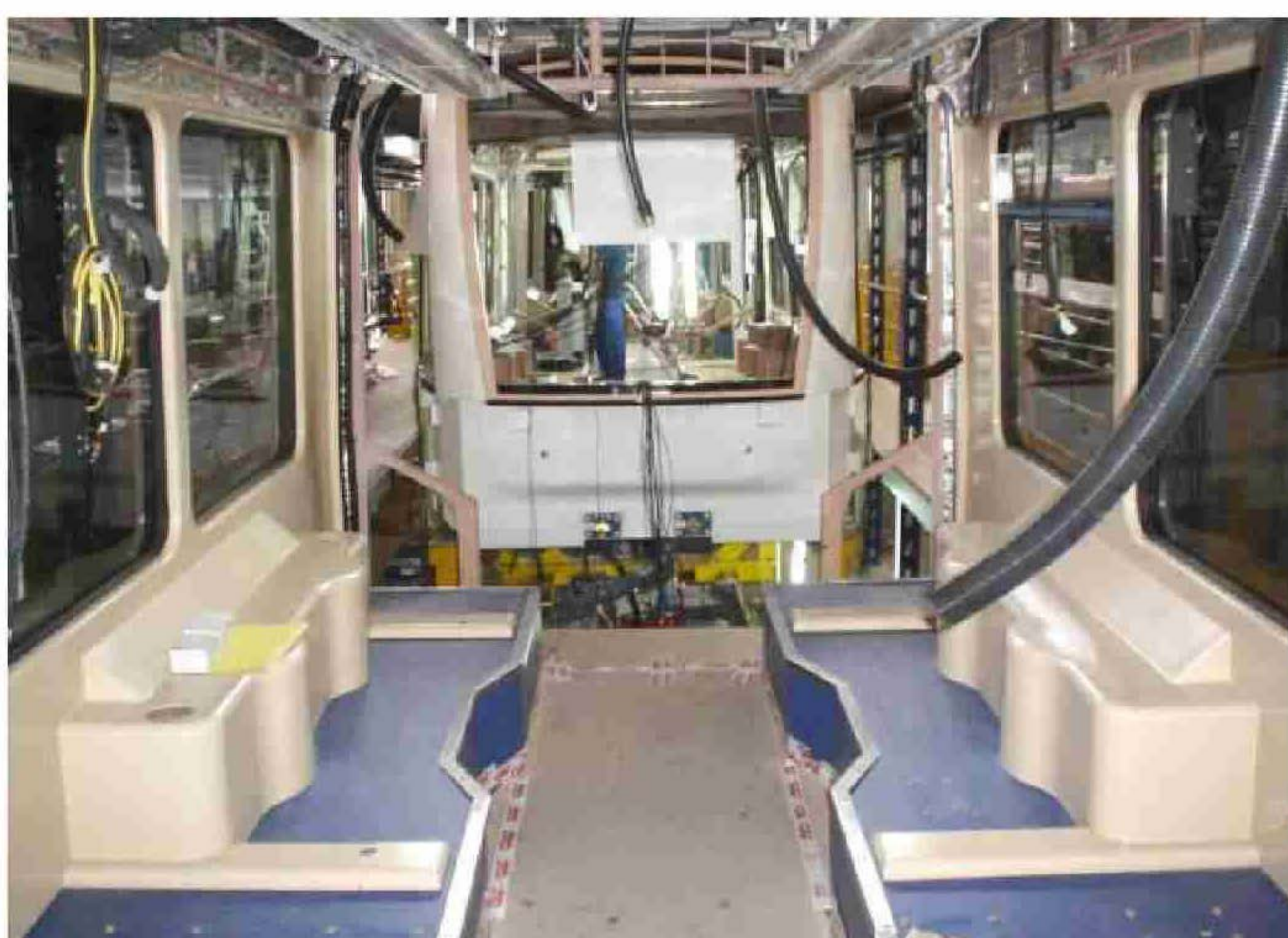
**INFORME DE AVANCE DE FABRICACIÓN
MANUFACTURING STATUS
"EDINBURGH TRAM"**

3.- CAJAS PINTADAS / PAINTED BODYSHELLS



B-3 Painted

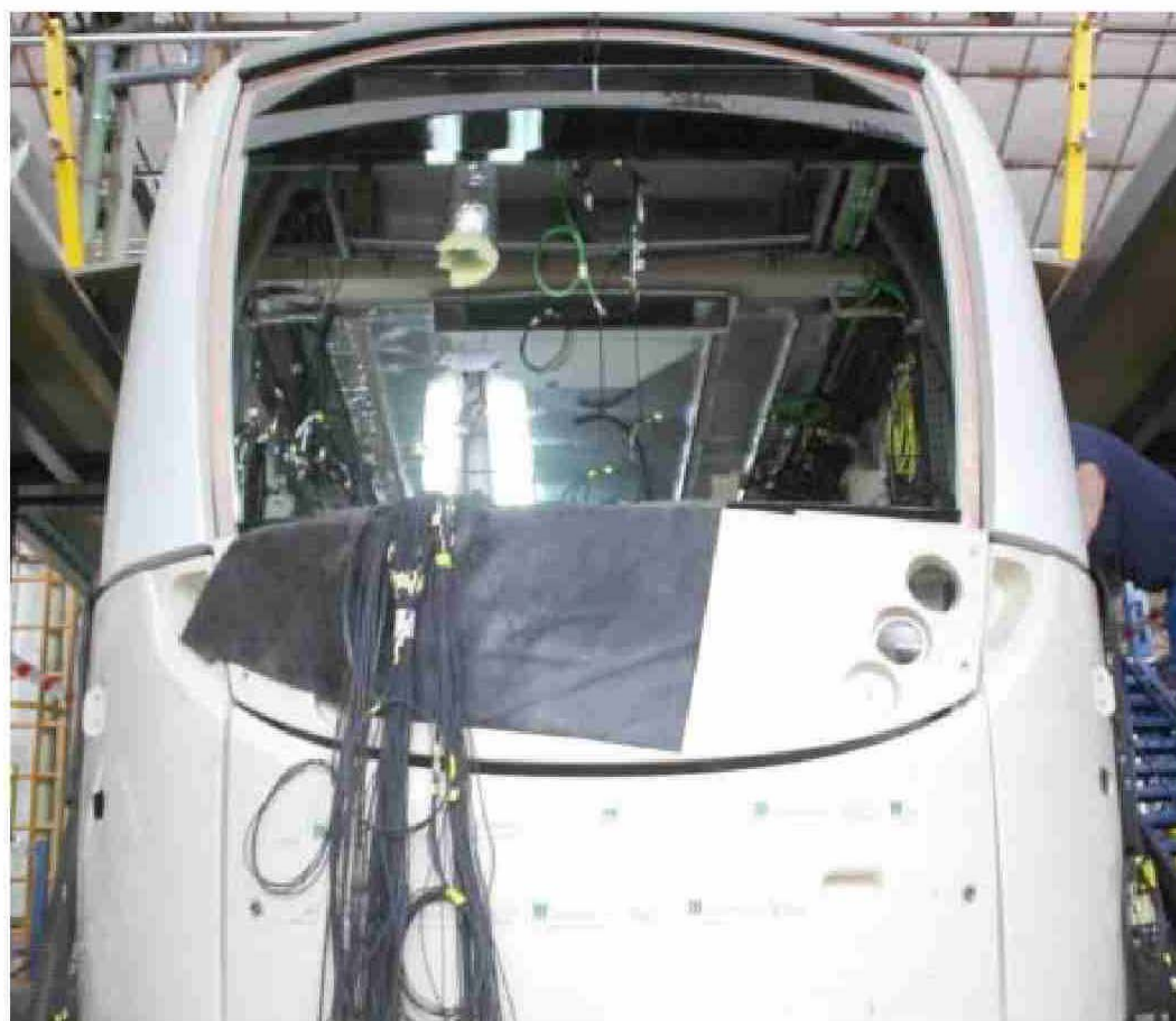
4.- MONTAJE DE PAVIMENTO/ FLOOR COVERING ASSEMBLY



A-1 Floor cover assembled

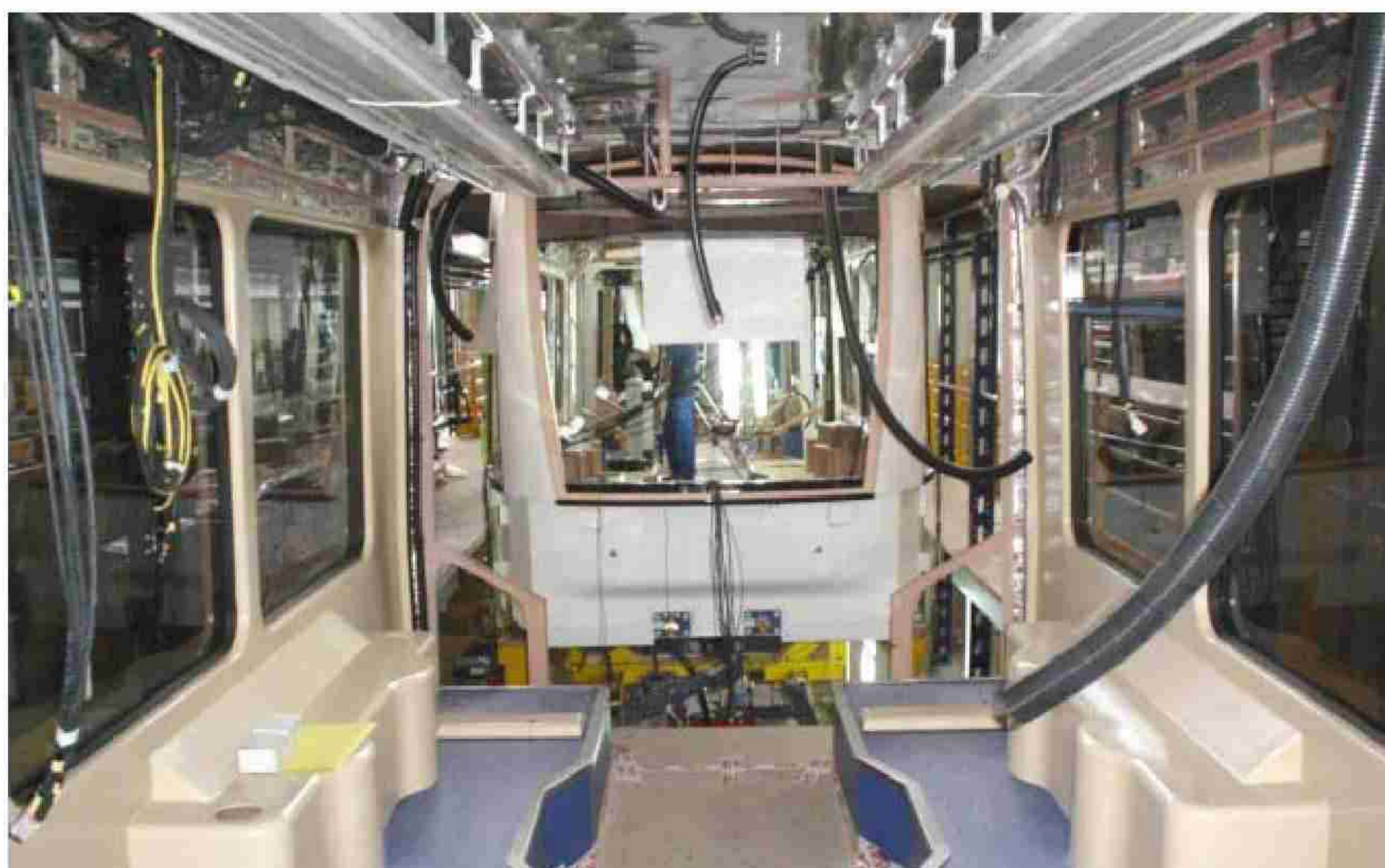
INFORME DE AVANCE DE FABRICACIÓN MANUFACTURING STATUS "EDINBURGH TRAM"

5.- MONTAJE DE TESTERO/ FRONT END ASSEMBLY



A-1 Front end assembled

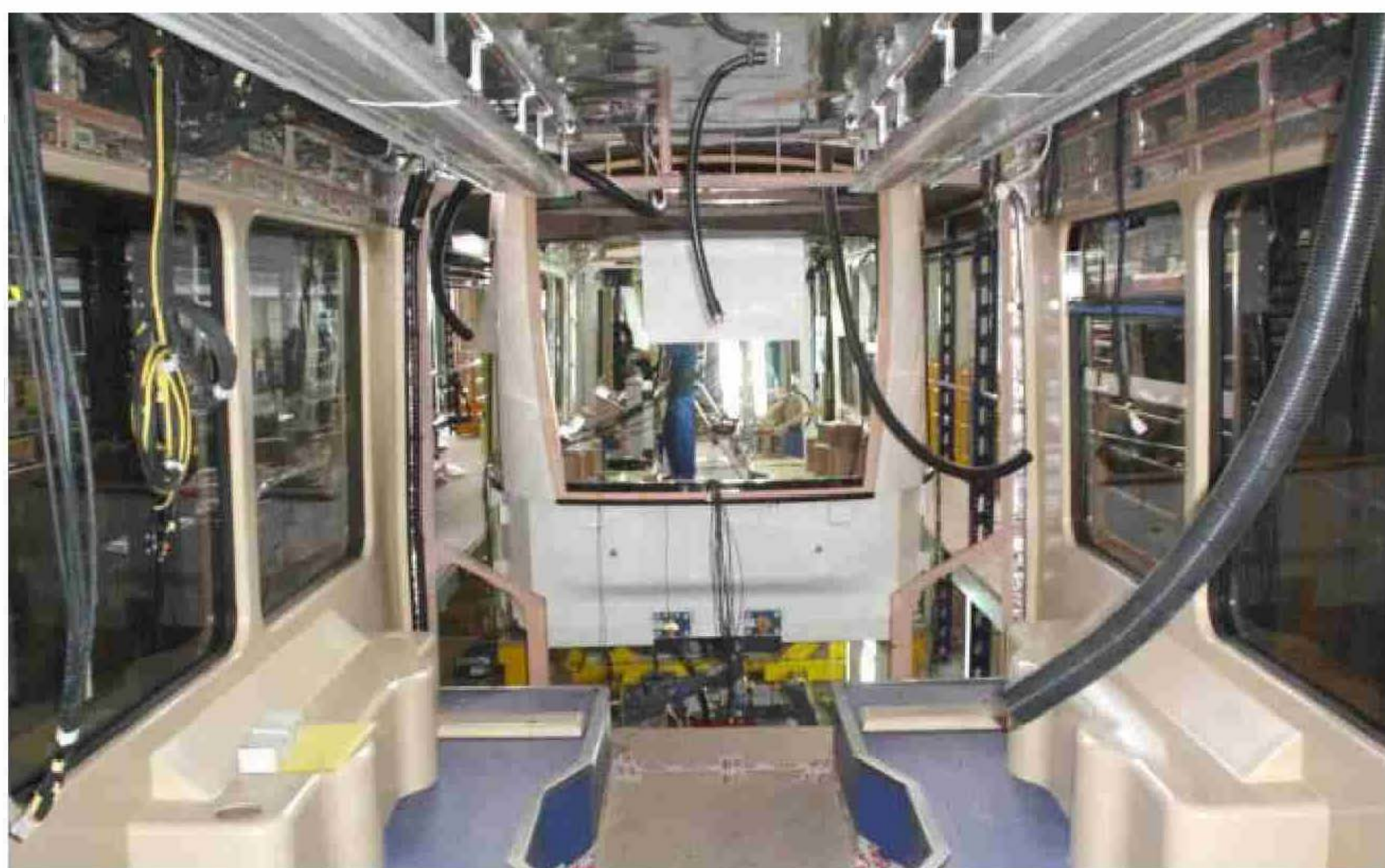
6.- PROCESO DE CABLEADO/ WIRING PROCESS



C-1 Wiring

**INFORME DE AVANCE DE FABRICACIÓN
MANUFACTURING STATUS
"EDINBURGH TRAM"**

7.-MONTAJE DE REVESTIMIENTOS/ LINING ASSEMBLY



C-1 Lining assembly

8.-MONTAJE DE APARATOS EN CUBIERTA / ROOF EQUIPMENT ASSEMBLY



A-1 Roof

**INFORME DE AVANCE DE FABRICACIÓN
MANUFACTURING STATUS
"EDINBURGH TRAM"**

9.-MONTAJE DE APARATOS BAJO BASTIDOR/ UNDERFRAME EQUIPMENT ASSEMBLY



A-1 Underframe



G-1 Underframe

**INFORME DE AVANCE DE FABRICACIÓN
MANUFACTURING STATUS
"EDINBURGH TRAM"**

UNIT	STATUS
A-1	Finishing process
B-1	Finishing process
C-1	Finishing process
F-1	Finishing process
G-1	Finishing process
D-1	Finishing process
E-1	Finishing process

UNIT	STATUS
A-2	Finishing process
B-2	Finishing process
C-2	Finishing process
F-2	Finishing process
G-2	Finishing process
D-2	Finishing process
E-2	Finishing process

UNIT	STATUS
A-3	Painting process
B-3	Painted
C-3	Painting process
F-3	Bodyshell assembly finished. To begin the process of painting
G-3	Bodyshell assembly finished. To begin the process of painting
D-3	Painting process
E-3	Painting process

UNIT	STATUS
A-4	Bodyshell assembly finished. To begin the process of painting
B-4	Bodyshell assembly finished. To begin the process of painting
C-4	Bodyshell assembly finished. To begin the process of painting
F-4	Bodyshell assembly finished. To begin the process of painting
G-4	Bodyshell assembly finished. To begin the process of painting
D-4	Bodyshell assembly finished. To begin the process of painting
E-4	Bodyshell assembly finished. To begin the process of painting

**INFORME DE AVANCE DE FABRICACIÓN
MANUFACTURING STATUS
"EDINBURGH TRAM"**

UNIT	STATUS
A-5	Painting process
B-5	Painting process
C-5	Painting process
F-5	Bodyshell fabrication
G-5	Bodyshell fabrication
D-5	Bodyshell fabrication
E-5	Bodyshell assembly finished. To begin the process of painting

UNIT	STATUS
A-6	Bodyshell fabrication. Measured
B-6	Bodyshell fabrication
C-6	Bodyshell fabrication
F-6	Bodyshell fabrication
G-6	Bodyshell fabrication
D-6	Bodyshell fabrication
E-6	Bodyshell fabrication

Signed: Idoia Garmendia
CAF Q.A.

10.5 RFI Register

Process Register

Company Bilfinger Berger Civil
Channel ETN (<http://etn.mybiw.com>)



Status	System Ref	WorkPackage Ref	Publishing Company	Title	Content	Publishing User	Issued Date
Needs further clarification	RFI-00065	BSC-64	Siemens Transportation Systems	RFI 065 - ELECTRICITY AND METER SUPPLIER	ELECTRICITY AND METER SUPPLIER Issued 03.07.08 Response Received 10.07.08 - TRN-1544	Roland Brueckmann	24/07/2008
Needs further clarification	RFI-00074	BSC-73	Siemens Transportation Systems	RFI 074 - WASHING PLANT DESIGN	WASHING PLANT DESIGN Issued 11.07.08 Response Received 16.07.08 - TRN-01584	Norbert Wunder	24/07/2008
Needs further clarification	RFI-00075	BSC-74	Siemens Transportation Systems	RFI 075 - REQUIREMENTS FPR FLOATING SLAB	REQUIREMENTS FPR FLOATING SLAB Issued 11.07.08 Response Received 21.07.08 - TRN-01600	Robert Kraemer	24/07/2008
Needs further clarification	RFI-00077	BSC-76	Siemens Transportation Systems	RFI 077 - RE-ISSUE OF RFI 067	RE-ISSUE OF RFI 067 Issued 14.07.08 Response Received 18.07.08 - TRN-01596	Robert Kraemer	24/07/2008
Needs further clarification	RFI-00082	BSC-81	Siemens Transportation Systems	RFI 082 - TRAMSOP LIGHTING	TRAMSOP LIGHTING Issued 31.07.08	Roland Brueckmann	31/07/2008
Needs further clarification	RFI-00099	BSC-98	Siemens Transportation Systems	RFI 00099-ETN(DWE)TIE&ABC050014_Compressed Air	Following previous versions of the ER the technical proposal for the DWE considers a Compressed Air	Robert Kraemer	15/08/2008
Needs further clarification	RFI-00100	BSC-99	Siemens Transportation Systems	RFI 00100-ETN(TRW)TIE&ABC#050020 - Value Engineering TRW	Value Engineering Opportunity – Change from Embedded track to ballasted track; Tie reference: INF_CO	Klaus Dieker	20/08/2008
Needs further clarification	RFI-00103	BSC-102	Siemens Transportation Systems	RFI 00103-ETN(SIG)TIE&ABC#050027 Timetable System	Please provide details of the tram timetable system proposed for the Edinburgh Tram project and in p	Robert Kraemer	25/08/2008

CEC00624371_0129

Open	RFI-00110		Siemens Transportation Systems	SERVICE VEHICLE PAYLOAD (ETN(DWE)TIE&ABC#050059)	In the Employer's Requirements, Section 29.14-Depot, Provisional Schedule of the Plant and Equipment	Frank Wenzel	23/09/2008
Needs further clarification	RFI-00116		Siemens Transportation Systems	Noise & Vibration Protecting Measures	During a meeting on the requirements for noise & vibration we have been informed by Tie, that co	Robert Kraemer	07/10/2008
Needs further clarification	RFI-00117		Siemens Transportation Systems	Gogar Depot OLE Sectioning	The designed sectioning is flexible but complex, there is an opportunity to simplify, reduced ca	Robert Kraemer	07/10/2008
Open	RFI-00156		Bilfinger Berger Civil	Section 1B	Thus ducts from chamber at approx ch 210 running to and through Jane St have not been lowered an	Frank Young	20/11/2008
Open	RFI-00162		Bilfinger Berger Civil	Section 1B Roadworks	New kerb alignment approx ch 510 - 530 runs through new BT and C&W chambers. Please advise (see	Frank Young	15/12/2008
Open	RFI-00165		Bilfinger Berger Civil	Section 1B Roadworks - high water valve	At approx ch550 RHS a water valve (currently in footpath) which is in the new road construction wi	Frank Young	06/01/2009
Open	RFI-00166		Bilfinger Berger Civil	Section 1B Roadworks - Drawpit ch474	A new electricity drawpit at approx ch 474 RHS currently on the footway but to be within carriag	Frank Young	06/01/2009
Open	RFI-00167		Bilfinger Berger Civil	Section 1B Roadworks - BT chamber ch 490	Edge of BT chamber cover at approx ch 490 LHS lies on line of new kerb. (See attached photo). Plea	Frank Young	06/01/2009
Needs further clarification	RFI-00168		Bilfinger Berger Civil	Section 1B Roadworks - ch 495 gas valve	A gas valve at approx ch 495 RHS will foul the new kerb line (see attached photo). Please advise	Frank Young	06/01/2009
Open	RFI-00169		Bilfinger Berger Civil	Section 1B Roadworks - C&W chamber north radius	A new chamber for C&W on the north radius of Crown Place, approx ch110, is fouling the new kerblin	Frank Young	06/01/2009
Open	RFI-00170		Bilfinger Berger Civil	FW:Section 1B Roadworks - ch399 jointing chamber	New chambe	Frank Young	07/01/2009
Open	RFI-00171		Bilfinger Berger Civil	Section 1B Roadworks - FH ch405 RHS	New fire hydrant at ch 405 RHS currently in footway has only120mm cover to spindle but will be in	Frank Young	08/01/2009
Open	RFI-00172		Bilfinger Berger Civil	Section 1B Roadworks -FHS ch446	2 No fire hydrants (1 old, 1 new ?) currently on footway but to be in new carriageway only have 85	Frank Young	09/01/2009
Open	RFI-00173		Bilfinger Berger Civil	Section 1B Roadworks - ch506 FH	Fire hydrant currently in footway but to be in new carriageway only has 80mm cover from current po	Frank Young	09/01/2009
Open	RFI-00174		Bilfinger Berger Civil	Section 1B Roadworks ch 592 drawpit	Drawpit fouling new kerb line at ch592 LHS (see attached photo). Please advise	Frank Young	09/01/2009
Open	RFI-00180		Bilfinger Berger Civil	Section 1B Roadworks - ch 625 RHS BT chamber	The new BT chamber built at ch625 RHS fouls the new kerblin and ducts exiting to the road will ha	Frank Young	14/01/2009
Needs further clarification	RFI-00181		Bilfinger Berger Civil	Section 1B Roadworks - ch 882 BT chamber	BT chamber at ch 882 RHS clashes with new kerblin and ducts exiting across carriageway will only	Frank Young	14/01/2009
Open	RFI-00182		Bilfinger Berger Civil	Section 1B Roadworks - ch710RHS water valve	Valve on new water main at ch 710 RHS lies on new kerblin (see attached photo). Please advise	Frank Young	14/01/2009
Needs further clarification	RFI-00183		Bilfinger Berger Civil	Section 1B Roadworks - ch900 LHS valve	New valve on water main approx ch 900 LHS clashes with new kerblin (see attached photo). Please a	Frank Young	14/01/2009
Needs further clarification	RFI-00184		Bilfinger Berger Civil	Section 1B Roadworks - ch 890 valve	New valve on water main approx ch 890 LHS clashes with new kerblin (see attached photo). Please a	Frank Young	14/01/2009
Needs further clarification	RFI-00185		Bilfinger Berger Civil	Section 1B Roadworks - ch 210 LHS valve	Water valve at ch 210 LHS currently in footway but will be in new carriageway has only approx 120m	Frank Young	14/01/2009
Needs further clarification	RFI-00186		Bilfinger Berger Civil	Section 1B Roadworks - ch 530 RHS drawpit	Existing chamber at approx ch 530 RHS clashes with new kerblin (see attached photos). Please advi	Frank Young	14/01/2009

Open	RFI-00188		Bilfinger Berger Civil	Section 1B Roadworks ch110602	Water valve/toy clashes with new kerbline at ch 110602 LHS (see attached photo). Please advise	Frank Young	20/01/2009
Open	RFI-00189		Bilfinger Berger Civil	Section 1B Roadworks ch110100	Water valve/toy clashes with new kerbline at ch 110100 (see attached photo)./ Please advise	Frank Young	20/01/2009
Open	RFI-00190		Bilfinger Berger Civil	Section 1B Roadworks	Water valve/toy at ch111106 LHS clashes with new kerbline (see attached photo). Please advise	Frank Young	20/01/2009
Open	RFI-00191		Bilfinger Berger Civil	Section 1B Roadworks ch111151	BT chamber at ch111151 LHS clashes with new kerbline (see attached photo). Please advise	Frank Young	20/01/2009
Open	RFI-00192		Bilfinger Berger Civil	Section 1B Roadworks ch111095	New fire hydrant and 2 valves clash with new kerbline at approx ch 111095 RHS (see attached photo)	Frank Young	20/01/2009
Open	RFI-00197		Bilfinger Berger Civil	Section 1B Roadworks ch 111150	New water mains at Leith Walk Railway Bridge are completely within pavement make up. Please advise	Frank Young	20/01/2009
Open	RFI-00211		Bilfinger Berger Civil	Section 1B Roadworks	At approx ch 125 RHS - Casselbank St an old steel pipe has been connected to new BT ducting immedi	Frank Young	03/03/2009
Needs further clarification	RFI-00213		Bilfinger Berger Civil	Section 7A - As Built Utility Information	Please provide as built utility information in Section 7A from Culvert 3 location to Airport.	Simon Nesbitt	03/04/2009
Needs further clarification	RFI-00215		Siemens Transportation Systems	TRAMSTOP CABINET KEY SUITE SYSTEM	Can TIE please provide the following:- •Type of key required for Tramstop Cabinet lock to equip	Michael Wilken	06/04/2009
Needs further clarification	RFI-00216		Siemens Transportation Systems	Postal address for Gogar depot and sub-station sites	In order to progress applications for radio license, BT circuit provision etc. Can Tie please	Michael Wilken	06/04/2009
Needs further clarification	RFI-00217		Siemens Transportation Systems	Radio system configuration	Further to the ORR Prelim design review and in particular the requirements for "radio to control c	Michael Wilken	06/04/2009
Needs further clarification	RFI-00218		Siemens Transportation Systems	ingiston Park and Ride existing CCTV cameras.	Section 35.9.1 of the ER (issue 4) states that "The ODN also needs to allow for 7 existing, plus t	Michael Wilken	06/04/2009
Needs further clarification	RFI-00219		Siemens Transportation Systems	Facilities to be provided at emergency/backup control	Section 35.11.1 of the ER states "The ODN shall support the emergency relocation of Control Centre	Michael Wilken	06/04/2009
Needs further clarification	RFI-00222		Siemens Transportation Systems	Lift operation at Murrayfield tramsop.	Section 35.8.1 of the ER (issue 4) states "Each Tramstop platform shall be equipped with at least o	Michael Wilken	06/04/2009
Needs further clarification	RFI-00223		Siemens Transportation Systems	Additional PHP call handler?	Within the Railcom Manager Outline Design review item 4.8 states "PHP call responses. In times of	Michael Wilken	10/04/2009
Open	RFI-00235		Bilfinger Berger Civil	110v power outlet	In the reply to RFI 229, it was stated that "TEL has intimated that the 110v supply is required fo	Clifford Styles	28/05/2009
Open	RFI-00237		Bilfinger Berger Civil	A buried structure has been uncovered during Mudfa	A buried structure has been uncovered during Mudfa Contract works. Photos,co-ordinates and sket	Graham Adcock	02/06/2009
Open	RFI-00238		Siemens Transportation Systems	Functionality of 4th IBIS button on the drivers cab	Reference tie's letter INF CORR 1247/LM dated 14 April 2009. Following item 2.2 of the comments to	Michael Wilken	03/06/2009
Open	RFI-00239		Siemens Transportation Systems	Provision of timetable and timetable data	Please would tie provide to BSC an initial operational timetable including:	Michael Wilken	15/06/2009
Open	RFI-00240		Siemens Transportation Systems	Definition of user categories for Control Centre	During the Signalling Design Review Meeting on 24 March 2009 it has been agreed that tie/Transdev	Michael Wilken	15/06/2009
Open	RFI-00241		Bilfinger Berger Civil	Russell Road Retaining Walls, Site Investigation	Further to the email from our Graeme Angus to your M. Paterson relating to TNC 076 on 04/06/09 at	Duncan Lambert	29/06/2009

Bilfinger Berger – Siemens – CAF Consortium

10.6 Civil Works Procurement Schedule

Subcontract Procurement / Register Contract : Edinburgh Tram Network				PROGRAMME REQUIREMENTS										PROCESSES									
Enquiry Ref Number	Subcontract Trade	Section	Company	Prospective Companies	QS	Enquiry Needs Sent Out By (F74-3)	Status	Order Needs Placed By	Status	Letter of Intent Issued / Limited Order to Proceed	Required for Start on Site	Design Package Issued for Construction	F74-1	F519-1	F74-4	F74-5	Authority to Place	CI-25.2	F74-9	Order Issued	Order Back	F74-11	F74-2
													Subcontract Questionnaire	Subcontract Performance Appraisal	Subcontract Enquiry (letter)	Subcontract Pre-Award/Start Meeting	Subcontract Quality Plan	Subcontract Environmental Questionnaire	Subcontract Review	Subcontract Review	Subcontract Review	Subcontract Review	Subcontract Review
1	Land Surveys (SW)	SW	Becker Geomatics Ltd	1	KB	n/a	✓	n/a	✓		n/a	n/a	✓		✓			n/a		✓	✓	✓	
2	Tree Felling / Advance Works (SW)	SW	W Laing	1	JT	n/a	✓	n/a	✓		n/a				✓			n/a		✓	✓	✓	
3	Site Clearance / Civils Package (7A)	7A	Farrans (Construction) Ltd	1	DG	n/a	✓	n/a	✓		n/a		✓	✓				n/a		✓		✓	
4	Setting Out Engineers / Advance Works	SW	Beattie Chalmers Ltd	1	JT	n/a	✓	n/a	✓		n/a		n/a					n/a		✓	✓	✓	
5	Demolition of Caley Alehouse	2A	John Graham (Dromore) Ltd	1	DG	n/a	✓	n/a	✓		16-Jun-08		✓	✓				n/a		✓		✓	
9	Existing Road Surveys	SW	Mouchel	1	KB	n/a	✓	n/a	✓		23-Jun-08		✓		✓			n/a		✓	✓	✓	
10	Erection of Temporary Trackside Fencing	5	Lumberjax Environmental	1	JT		✓		✓		21-Jun-08					✓		n/a		✓	✓	✓	
11	Civils Package	7A/5C		1	Farrans	DG	16-Jun-08	✓	28-Jul-08		06-Aug-08	04-Aug-08	✓	✓	✓			✓				✓	
12	Civils Package	2A1D5A		1	John Graham (Dromore) Ltd	GA	23-Jun-08	✓	21-Jul-08			02-Mar-09											
14	Advisory Services	SW	Hill International UK Ltd	1	KB																		
17	Temporary Works Design	SW	Tony Gee	1	TG	12-May-08	✓	23-Jun-08		30-Jun-08	n/a		✓	✓				n/a	✓			✓	
18	Formwork, Rebar, Concrete	5	Expanded Ltd	1	GA	23-Jun-08	✓	21-Jul-08		29-May-09	18-Aug-08		✓	n/a					✓				
20	PC Beams	5	Banagher	1	TG	23-Jun-08	✓	20-Oct-08	✓		01-Dec-08												
21	Site Clearance	5	Edinburgh Woodland	1	JT	04-May-09		19-May-09		n/a	25-Jun-09									✓			
24	Photography	SW	White House Studios	1	KB	04-Jun-08	✓	16-Jul-08		n/a	23-Jul-08		✓	✓	✓	n/a		n/a		✓	✓	✓	
25	Structural Steel	5	Fairfield Mabey	1	GA	Jan 08	✓			26-Jun-08	01-Dec-08	28-Jul-08	✓	n/a								✓	
26	Traffic Management (SW)	SW	Class One	1	TG		✓	22-Jul-08			05-Aug-08		✓	✓	✓	✓							
27	Timber Fencing	SW		1	G Walker, JKF, DE Fencing, Lumberjacks, Alter	TG		✓															
30	Deck waterproofing & Surface Treatment	SW		1	Universal Sealants, Pitchmastic, Stirling Loyd	DG																	
31	Metal railings and handrailing	SW		1	DE Fencing, JKF	DG																	
34	Designers	SW	Parsons Brickerhoff	1	KB													n/a				✓	
38	Civils Package	6	Barr Ltd	1	DG	26-May-08	✓	07-Jul-08	✓	02-Jun-08	04-Aug-08		✓		✓			✓		✓	✓		
42	Property Conditions Survey	SW		1	DM Hall / PT / DTZ	DG																	
44	Site Investigation Works	5	Raebum	1	JT	02-Jun-08	✓	30-Jun-08		n/a	07-Jul-08				✓					✓	✓	✓	
45	Civils Package	1B	Crummock	1	DG	04-Aug-08	✓	10-Oct-08		10-Sep-08	06-Oct-08	07-Jul-08	✓	✓	✓	✓	✓	✓				✓	
46	Civils Package	1D	MacKenzie	1	DG	04-Aug-08	✓	27-Oct-08		17-Dec-08	05-Jan-09	04-Jul-08	✓	✓	✓		✓	✓	✓			✓	
48	Control Network Survey Check - Site Wide		L & M Surveys	1	KB	03-Jul-08	✓	14-Jul-08			14-Jul-08							n/a		✓		✓	
49	Utility Diversions	SW		1	Core Construction, Clancy Docwra, Intuto	DG	14-Jul-08	✓															
53	Acoustic Monitoring	SW	RMP Acoustic Consultants	1	KB	n/a		20-Jul-08	✓		27-Jul-08		✓	✓	✓			n/a		✓	✓	✓	
55	Tree Felling Adjacent to NR Rail Network		W Laing	1	KB	17-Jul-08	✓	11-Aug-08	✓	n/a	25-Aug-08				✓					✓	✓	✓	
58	Ecologist	SW	JDC Ecology Ltd	1	KB										✓					✓	✓	✓	
65	Supply of CRE	SW	Siemens TS	1	SK	n/a		n/a	✓	n/a	n/a		n/a	n/a	n/a	n/a		n/a	n/a	✓	✓		
70	Groundworks	5	Gallagher Goundworks	1	SK	25-Jul-08	✓	04-Aug-08	✓	n/a	11-Aug-08							n/a		✓	✓	✓	
73	Edinburgh Park Hoarding	5	Rapid Hoard Ltd	1	JT	01-Aug-08	✓	15-Aug-08	✓	n/a	29-Aug-08		✓	✓	✓			n/a		✓	✓	✓	
74	A8 Underpass	5	Expanded Piling Ltd	1	GA	06-Aug-08	✓	03-Sep-08	✓	15-Sep-08	15-Sep-08		✓	✓	✓	✓	✓	✓	✓			✓	
77	Temporary Traffic Signals	SW		1	DG					n/a	02-Oct-08								n/a				
80	Welding Services		Andrew Turner	1	JA	n/a		19-Sep-08	✓	n/a	23-Sep-08		n/a	n/a	n/a	n/a		n/a	n/a	✓			
81	Edinburgh Park Structure	5	Expanded Structures Ltd	1	GA	03-Oct-08	✓	n/a		05-Nov-08	Nov 08		✓	n/a	✓		✓	✓	✓			✓	
82	Japanese Knotweed Eradication	5	TCM Ltd	1	GA	16-Sep-08	✓	n/a	✓	30-Sep-08	20-Oct-08		✓	n/a	✓				✓	✓			
84	Site Clearance	5	D Methuen Turnstone Ltd	1	JT	n/a		15-Sep-08	✓	n/a	16-Sep-08			n/a	✓	n/a		n/a		✓	✓	✓	
85	Traffic Management Design		Faber Maunsell	1	SK	12-Sep-08	✓	08-Oct-08	✓	n/a	10-Oct-08			n/a			✓			✓	✓	✓	
86	Steel Foundations	S27	Steel Foundations Ltd	1	DT					14-Oct-08	15-Oct-08		✓	n/a	✓		✓		✓			✓	
87	Temporary Sheet Piling Carrick Knowe	S23	McGrattan Piling Ltd	1	DT	06-Oct-08	✓	20-Oct-08		05-Nov-08	20-Nov-08		✓	n/a	✓				✓			✓	



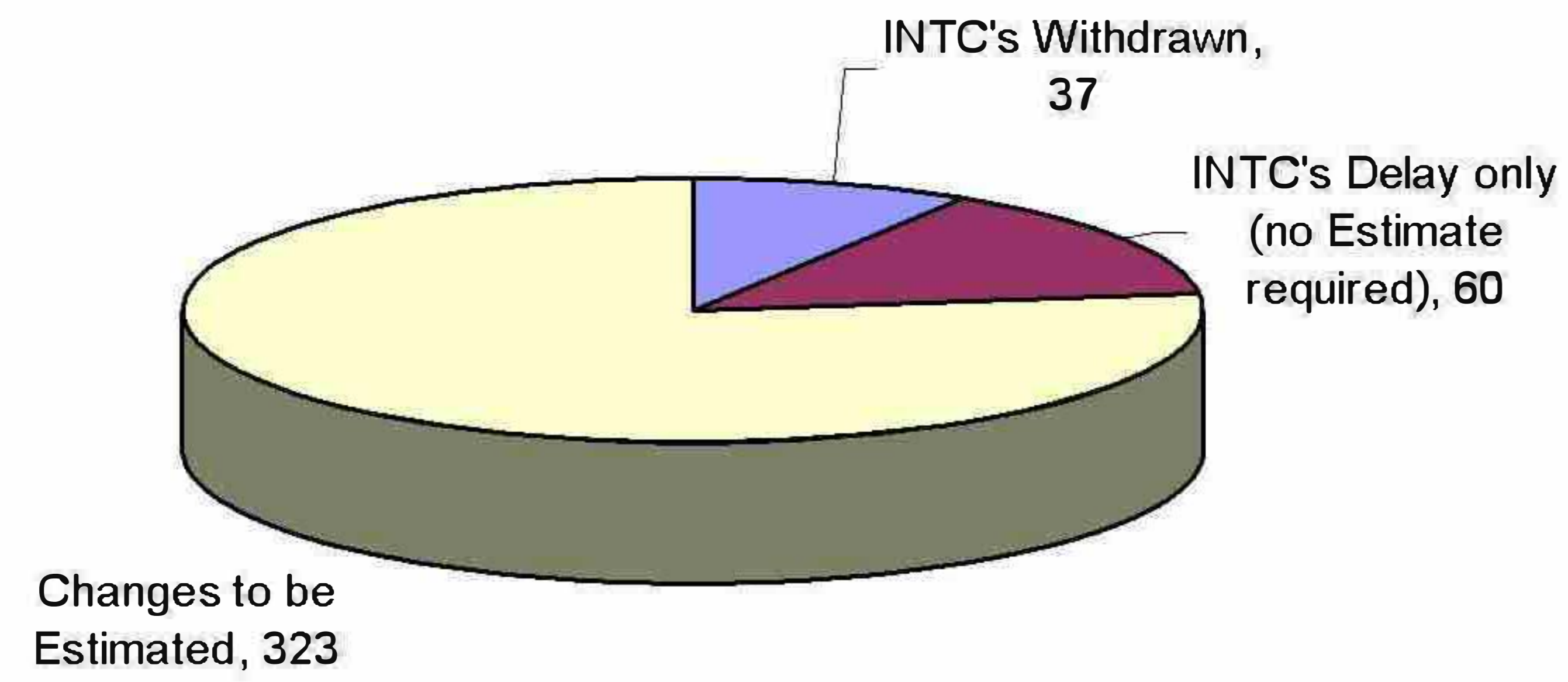
Subcontract Procurement / Register Contract : Edinburgh Tram Network				PROGRAMME REQUIREMENTS										PROCESSES												
88	Civils Package	1A1	Included in 89	1		SK	03-Oct-08	✓								✓	n/a					✓				
89	Civils Package	1A2	McKean	1		SK	03-Oct-08	✓	02-Sep-09		10-Jun-09	13-Jul-09				✓	n/a					✓				
90	W1, S16, S17 - Structures	1A	Included in 89	1		SK	03-Oct-08	✓								✓	n/a					✓				
91	Temporary Traffic Signals		Lochwynd	1		SK			21-Nov-08	✓		12-Dec-08				✓	n/a			✓	✓		✓	✓	✓	✓
95	Site Clearance	5B / 5C	MW Groundworks Ltd	1		JT	28-Nov-08	✓	12-Dec-08		n/a	22-Dec-08				✓	n/a	✓	n/a			✓	✓	✓	✓	✓
96	Fencing to Consortium Office		Willaim Houston Landscaping	1		JT	19-Dec-08	✓	16-Jan-09		n/a					✓	n/a		n/a			✓	✓	✓	✓	✓
100	Temporary Traffic Signals	1	Siemens Traffic Controls	1		SK				✓	09-Jan-09	10-Jan-09				n/a	n/a	n/a	n/a	✓	✓	n/a	✓	✓	✓	✓
101	Amendments to Existing Traffic Signals	1	Telent	1		SK	n/a		19-Jan-09	✓	n/a	26-Jan-09				✓	n/a			✓	n/a		✓	✓	✓	✓
102	Amendments to Existing Traffic Signals	1	Peek	1		SK	n/a		19-Jan-09	✓	n/a	26-Jan-09				✓	n/a	n/a	✓	✓	n/a	✓	✓		✓	✓
104	Civils Package	1C2		1	RJ McLeod, Barr Ltd, McKeen, Land Engineering, Malcom Group, WJ Harte	SS											n/a									
107	A8 Underpass Sheet Piling	5C	McGrattan Piling Ltd	1		DAT	01-Nov-08		16-Mar-09	✓	05-Mar-09	06-Apr-09				✓		✓		✓					✓	
61	Section 5 Civils	5		1	McKean, DCT, Dunnes, Expanded, Farrans, Malcolms	DAT	30-Nov-08		13-Jul-09																	
	Tramstop Shelters & Ancillary Equipment	SW		1	Broxap, McGrath, RWS, Clearchannel, Macemain	SK	01-Mar-09	✓				a				✓	n/a									
108	Substation Prefab Buildings	SW		1	Gladson, Portastor	SK	01-Mar-09	✓								✓	n/a									
109	Streetlighting	SW		1	BEAR, Harte, Pegasus, SBContracts, Lightways, Edminston & Brown, Orion	SK	17-Jul-09										n/a									
110	Temporary Lighting	5B	City of Edinburgh Council	1	City of Edinburgh Council, T & N Gilmartin	JL	02-Jun-09	✓	13-Jul-09		26-Jun-09	27-Jun-09				✓	n/a						✓			

CEC00624371_0134

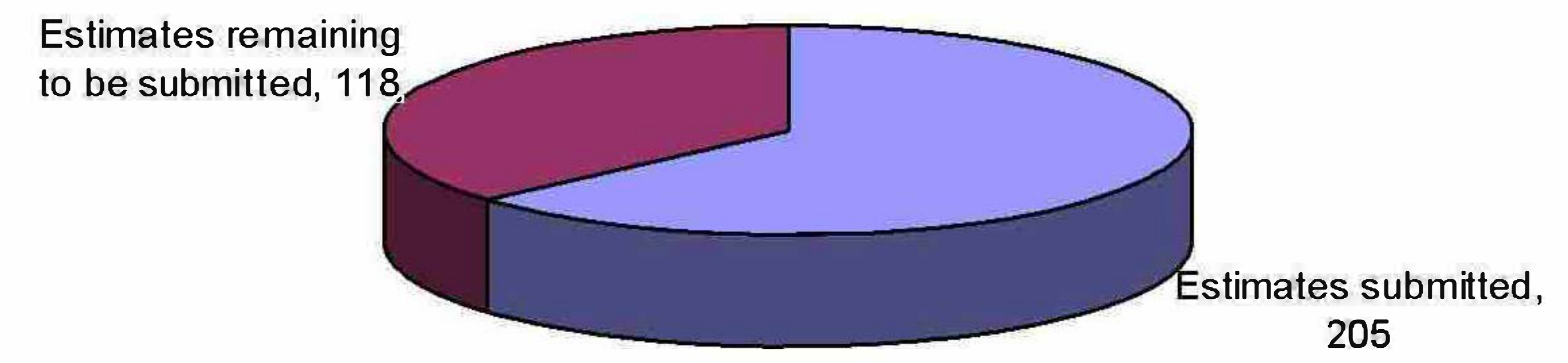
Bilfinger Berger – Siemens – CAF Consortium

10.7 Change Register

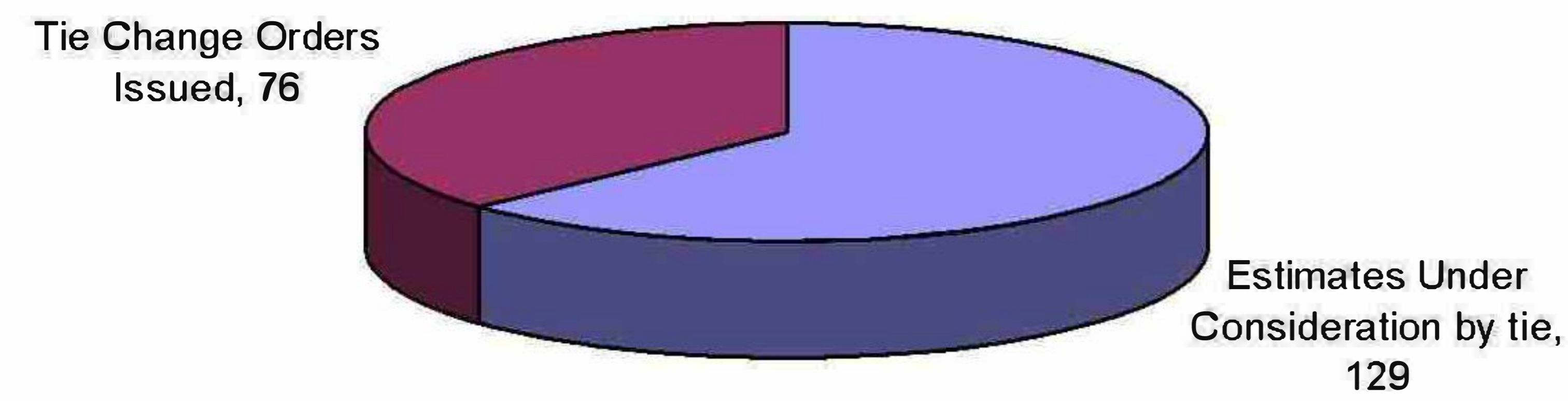
Overall Changes (TCN's & INTC's)
Total 420



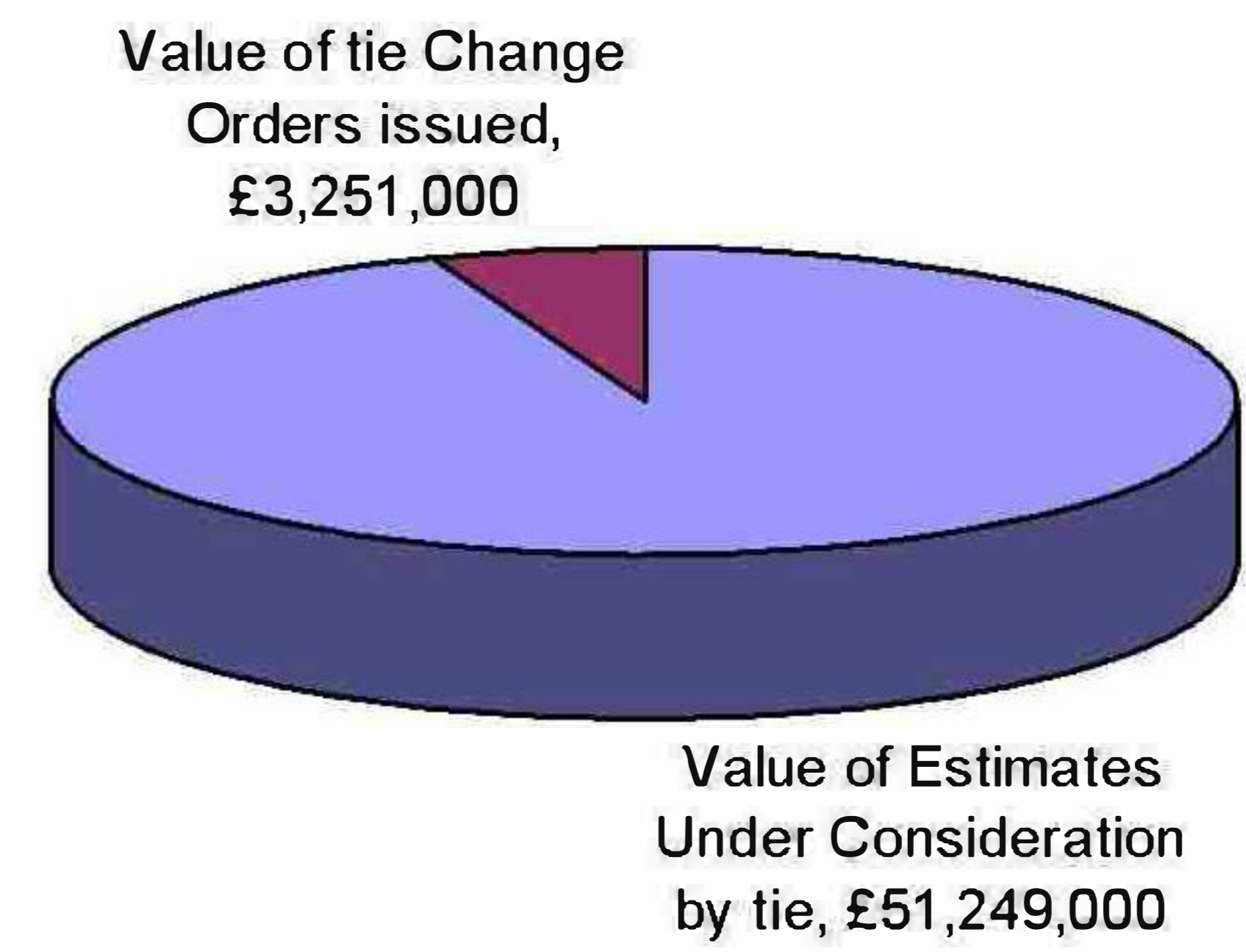
Overall Estimates (TCN's & INTC's)
Total 323



Overall Estimates (TCN's & INTC's) submitted and Tie Change Orders Issued
Total 205



Value of TCN's & INTC's submitted VS Tie Change Orders Issued





ETN INFRACO NOTIFICATION OF tie CHANGE (INTC)
CONFIDENTIAL

Withdrawn/Superseded/Not Delay Only
Often a Order Issued

Ref	Title	the Change Order TOID	Description	Date Notified	Date of further letters	Letter Ref	Agreed in Principle?	Estimate Issued? 1=Y,0=N	Compensation Event	Type	Change Type	Value Estimate (GBP)										Allocation of Cost		Location	Change Order Value (GBP)					
												£ Submitted (Euros) (CAF)										£ Agreed	£ Not Agreed	Psum or VE		Number	Section			
												See Notes	See Notes	See Notes	See Notes	See Notes	See Notes	See Notes	See Notes	See Notes	See Notes							See Notes	See Notes	See Notes
11			The GUARD on the electrical dig currently ongoing in the area of Bogart Terrace is delaying work disrupting the InfraCo in accessing and establishment of the site for the start Section 5C	28/05/2008	02/09/08 11/09/08 13/09/08 27/09/08 22/09/08 05/10/08	25.1.201/TM143 Ile-PR# CORR.40 25.1.201/TM153 Ile-PR# CORR.72 25.1.201/TM189 Ile-INV CORR.175 Emailed Re-Dig/Estimate	N/A	N/A				4	0	0	0	0	0	0	0	0	0	0	0	N/A	5C	0				
12			The GUARD on the electrical dig currently ongoing in the area of Bogart Terrace is causing damage to the tram corridor between 0h 210000-410000. This area will need to be made good once the tops are removed. It is complete potentially delaying and disrupting the InfraCo Works	28/05/2008	02/09/08 04/09/08 11/09/08 13/09/08 27/09/08 11/07/08 15/07/08 29/07/08 13/08/08 04/09/08 25/09/08	25.1.201/TM143 Ile-PR# CORR.40 Ile-PR# CORR.72 25.1.201/TM189 Emailed Engr Outline Emailed Engr City Point Meeting Emailed City Point Meeting Note Ile-DEL HSSE.1663 RFI 045 RFI 032 25.1.201/MS.7629	N/A	N/A				4	0	0	0	0	0	0	0	0	0	0	0	N/A	7	0				
13			Notified Departure in accordance with paragraph 3.4.5.1 and 3.5 Schedule Part 4 due to CEO Planning consents delays in connection with Rossmore Terrace Bridge, Tram stop and Retaining Walls being built between 3 April and 29 April 2008. Potentially causing disruption to the InfraCo intended sequence	30/05/2008	21/06/08 02/07/08 17/06/08	Emailed Email Application Process 25.1.201/TM143 Ile-PR# CORR.40 25.1.201/TM153	N/A	N/A				4	0	0	0	0	0	0	0	0	0	0	0	0	N/A	ALL	0			
14			Notified Departure in accordance with paragraph 3.4.5.1 and 3.5 Schedule Part 4 due to the MUBFA Contractor not having completed the 800mm dia Water Main diversion in the Depot area in accordance with the requirements of the Programme causing delay and disruption to the InfraCo's intended sequence	28/05/2008	02/09/08 11/09/08 13/09/08 27/09/08 09/10/08 02/12/08 19/12/08 30/01/09 20/01/09 26/01/09 04/02/09 06/02/09	25.1.201/TM143 Ile-PR# CORR.40 25.1.201/TM153 Ile-PR# CORR.72 25.1.201/TM189 25.1.201/MS25 25.1.201/MRH1076 Ile-INV CORR.489 25.1.201/MRH1076 Ile-INV CORR.597 25.1.201/MRH1076 Ile-INV CORR.597 25.1.201/MRH1395 Ile-INV CORR.599 25.1.201/MRH1506 Ile-INV CORR.932 25.1.201/MRH1939	N/A	N/A				4	0	0	0	0	0	0	0	0	0	0	0	0	N/A	6	0			
15			Notified Departure in accordance with paragraph 3.4.5.1 and 3.5 Schedule Part 4 due to the MUBFA Contractor not having completed the 250mm dia Water Main diversion in the Depot area in accordance with the requirements of the Programme causing delay and disruption to the InfraCo's intended sequence	28/05/2008	02/09/08 11/09/08 13/09/08 27/09/08 09/10/08 18/12/08 05/01/09 20/01/09 26/01/09 04/02/09 06/02/09 16/03/09	25.1.201/TM143 Ile-PR# CORR.40 25.1.201/TM153 25.1.201/MRH1076 Ile-INV CORR.489 25.1.201/MRH1076 Ile-INV CORR.597 25.1.201/MRH1395 Ile-INV CORR.599 25.1.201/MRH1506 Ile-INV CORR.932 25.1.201/MRH1939	N/A	N/A				4	0	0	0	0	0	0	0	0	0	0	0	0	N/A	6	0			
16			Notified Departure in accordance with paragraph 3.4.5.1 and 3.5 Schedule Part 4 due to the MUBFA Contractor not having completed the 1500mm dia Sewer diversion in the Depot area in accordance with the requirements of the Programme causing delay and disruption to the InfraCo's intended sequence	30/05/2008	02/09/08 11/09/08 13/09/08 27/09/08 09/10/08 02/12/08 18/12/08 05/01/09 20/01/09 26/01/09 04/02/09 06/02/09 16/03/09 29/03/09 09/04/09 07/04/09 09/09/09	25.1.201/TM143 Ile-PR# CORR.40 25.1.201/TM153 Ile-PR# CORR.72 25.1.201/TM189 25.1.201/MS25 Ile-INV CORR.288 25.1.201/MRH1076 Ile-INV CORR.489 25.1.201/MRH1076 Ile-INV CORR.597 25.1.201/MRH1395 Ile-INV CORR.599 Ile-INV CORR.934 25.1.201/MRH1506 Ile-INV CORR.933 25.1.201/MRH1076 Ile-INV CORR.1069/MP 25.1.201/MRH1232 Ile-INV CORR.1408/MP 25.1.201/MRH1939	N/A	N/A				4	0	0	0	0	0	0	0	0	0	0	0	0	N/A	6	0			
17			Notified Departure in accordance with paragraph 3.4.5.1 and 3.5 Schedule Part 4 due to the MUBFA Contractor not having completed the 1500mm dia Deep Sewer under the MUBFA Centre with the South Gyle Access Bridge west abutment pile foundations potentially causing delay and disruption to the InfraCo's intended sequence	28/06/2008	15/06/08 02/08/08 11/08/08 13/08/08 27/08/08 27/08/08 09/10/08 10/07/08 25/07/08 05/08/08 08/08/08 25/09/08 27/09/08 09/09/08 15/09/08 02/10/08 09/10/08 09/10/08 23/10/08 29/10/08 26/09/08 05/11/08 06/11/08 10/11/08 18/11/08 05/12/08 12/12/08 14/12/08 07/01/09 19/01/09 28/01/09	25.1.201/TM143 Ile-PR# CORR.40 25.1.201/TM153 Ile-PR# CORR.72 25.1.201/TM189 Ile-PR# CORR.184 SDS-ULE 130-05-LET-01325 25.1.201/MS25 SDS-ULE 130-05-LET-01325 25.1.201/MS.762 Ile-INV CORR.115 25.1.201/MS227 25.1.201/MRH1 Ile-INV CORR.162 25.1.201/MRH1504 25.1.201/MS572 SDS-ULE 130-05-LET-01325 25.1.201/MRH1939 Ile-INV CORR.282 25.1.201/MRH1939 25.1.201/MRH659 25.1.201/MRH679 Ile-INV CORR.571 Ile-INV CORR.456 25.1.201/MRH1140 Ile-INV CORR.597 25.1.201/MRH1947 Ile-INV CORR.579 SDS-ULE 130-05-LET-01362	Y	N/A				4	0	0	0	0	0	0	0	0	0	0	0	0	0	0	0	N/A	6C	0

CEC00624371_0138



ETN INFRACO NOTIFICATION of tie CHANGE (INTC)
CONFIDENTIAL

Withdrawn/Superseded/Not
Delay Only
On the Order Issued

Ref	Title	Change Order ID	Description	Date Notified	Date of further letters	Letter Ref	Agreed in Principle?	Estimate Issued? 1=Y, 0=N	Compensation Event	Type	Change Type	Value Estimate (€)											Allocation of Cost		Location Section	Change Order Value (€)														
												Submitted (Euros) (CAF)											Sum of VE	Number																
												See Notes	See Notes	See Notes	See Notes	See Notes	See Notes	See Notes	See Notes	See Notes	See Notes	See Notes					See Notes	See Notes	See Notes	See Notes	See Notes									
28			Delay to Issue For Construction (FC) Submissions - Section 18 due to changed approval periods notified by SDS in attached letter ULE9130-SW-LET-0027 dated 4 June 2008 in accordance with Schedule Part 4 paragraph 3.4.5.1.	17/06/2008	27/06/08 01/07/08 30/07/08 19/08/08 02/10/08 24/10/08 17/11/08 25/11/08 16/12/08	25.1.2017/M/169 IE-PO CORR 104A 25.1.2017/H/199 25.1.2017/JH/256 IE-INF CORR 169 25.1.2017/JH/595 SDS-ULE9130-SW-LET-0029 25.1.2017/JH/697 IE-INF CORR 352 25.1.2017/BS/1072 25.1.2017/JH/1181	N/A	N/A		M	1	1,2,3,4	0	0	0	0	0	0	0	0	0	0	0	0	0	0	0	0	0	0	0	0	0	0	0	0				
29			Delay to Haymarket Station One Park Access Road due additional and revisions initiated by us notified by SDS in their response to attached Technical Query BS0300 dated 5 June 2008 in accordance with Schedule Part 4 paragraph 3.4.5.4.	17/06/2008	27/06/08 01/07/08 30/07/08 19/08/08 02/10/08 16/11/08 16/12/08	25.1.2017/M/169 IE-PO CORR 104A 25.1.2017/JH/199 25.1.2017/JH/256 IE-INF CORR 100 25.1.2017/JH/595 SDS-ULE9130-SW-LET-0127 25.1.2017/JH/1187	N/A	N/A		M	1	1,2,3,4	0	0	0	0	0	0	0	0	0	0	0	0	0	0	0	0	0	0	0	0	0	0	0	0	0	0	0	
30			Instruction to SDS to accelerate the delivery of IFC to meet the SDS programme as SDS Letter 00331 in accordance with Schedule Part 4 paragraph 3.4.5.5.	17/06/2008	22/05/08 27/06/08 01/07/08 30/07/08 19/08/08 02/10/08 16/12/08 16/12/08 07/01/09	SDS-ULE9130-SW-LET-0031 25.1.2017/M/169 IE-PO CORR 104A 25.1.2017/JH/199 25.1.2017/JH/256 IE-INF CORR 169 25.1.2017/JH/595 25.1.2017/JH/1181 IE-INF CORR 537 25.1.2017/JH/247	N	1		M	1	1,2,3,4	17,931	0	0	0	17,931	1,793	1,327	0	0	0	0	0	21,051	0	0	0	0	0	0	0	0	0	0	0	0	0	0	
31			Instruction to SDS to provide a single handrail to Leland Road Bridge as SDS Letter 00257 in accordance with Schedule Part 4 paragraph 3.4.1.3.	17/06/2008	27/06/08 01/07/08 30/07/08 19/08/08 02/10/08 16/11/08	25.1.2017/M/169 IE-PO CORR 104A 25.1.2017/JH/199 25.1.2017/JH/256 IE-INF CORR 169 SDS-ULE9130-SW-LET-00267 25.1.2017/JH/697 SDS-ULE9130-SW-LET-01279	N/A	N/A		M			0	0	0	0	0	0	0	0	0	0	0	0	0	0	0	0	0	0	0	0	0	0	0	0	0	0	0	
32			DEC failure to approve within agreed timescales SDS Letter 00257 in accordance with Schedule Part 4 paragraph 3.4.5.1.	17/06/2008	07/06/08 20/06/08 03/07/08 12/07/08 13/07/08 04/08/08 24/08/08 23/09/08	25.1.2017/M/100 25.1.2017/G/105 25.1.2017/SW/107 25.1.2017/SW/109 25.1.2017/M/110 25.1.2017/SW/114 25.1.2017/SW/124 25.1.2017/M/134 & 135 & 136 25.1.2017/M/139	N/A	N/A		M			0	0	0	0	0	0	0	0	0	0	0	0	0	0	0	0	0	0	0	0	0	0	0	0	0	0	0	
33			Network Rail failure to approve within agreed timescales SDS Letter 00256 in accordance with Schedule Part 4 paragraph 3.4.2.7.	17/06/2008	27/06/08 01/07/08 14/07/08 25/07/08 30/07/08 31/07/08 19/08/08 02/10/08	25.1.2017/M/169 IE-PO CORR 104A 25.1.2017/JH/199 25.1.2017/JH/256 IE-INF CORR 056 25.1.2017/JH/595 25.1.2017/JH/697 IE-INF CORR 169 25.1.2017/JH/1181	N/A	N/A		M			0	0	0	0	0	0	0	0	0	0	0	0	0	0	0	0	0	0	0	0	0	0	0	0	0	0	0	0
34			New Requirements Introduced by Public Realm Design Workbook per SDS Letter 00649 in accordance with Schedule Part 4 paragraph 3.4.4.3.	17/06/2008	28/05/08 29/05/08 27/06/08 01/07/08 14/07/08 24/07/08 28/07/08 30/07/08 06/08/08 19/08/08 02/10/08 15/11/08	SDS-ULE9130-SW-LET-00645 SDS-ULE9130-SW-LET-00649 25.1.2017/M/169 IE-PO CORR 104A 25.1.2017/JH/199 25.1.2017/JH/255 IE-INF CORR 054 SDS-ULE9130-SW-LET-01130 25.1.2017/JH/595 IE-INF CORR 169 SDS-ULE9130-SW-LET-01202 IE-INF CORR 169 25.1.2017/JH/599 25.1.2017/JH/1181	N/A	N/A		M			0	0	0	0	0	0	0	0	0	0	0	0	0	0	0	0	0	0	0	0	0	0	0	0	0	0	0	
35			New Requirements Introduced by Public Realm Design Workbook per SDS Letter 00649 in accordance with Schedule Part 4 paragraph 3.4.4.3.	17/06/2008	27/06/08 01/07/08 20/07/08 31/07/08 26/08/08 09/09/08 15/09/08 02/10/08 02/10/08 30/11/08 15/11/08	25.1.2017/M/169 IE-PO CORR 104A 25.1.2017/JH/199 SDS-ULE9130-SW-LET-01130 25.1.2017/JH/595 IE-INF CORR 169 SDS-ULE9130-SW-LET-01202 IE-INF CORR 169 SDS-ULE9130-SW-LET-00813 25.1.2017/JH/697 25.1.2017/JH/805 SDS-ULE9130-SW-LET-01260	N/A	N/A		M			0	0	0	0	0	0	0	0	0	0	0	0	0	0	0	0	0	0	0	0	0	0	0	0	0	0	0	0
36			Delay and Disruption to Crew Road Gardens Bridge IFC as SDS Letter 00239 in accordance with Schedule Part 4 paragraph 3.4.5.1.	17/06/2008	23/05/08 27/06/08 01/07/08 28/07/08 30/07/08 19/08/08 02/10/08	SDS-ULE9130-SW-LET-00239 25.1.2017/M/169 IE-PO CORR 104A 25.1.2017/JH/199 SDS-ULE9130-SW-LET-01130 25.1.2017/JH/595 SDS-ULE9130-SW-LET-01202 IE-INF CORR 169 25.1.2017/JH/697	N/A	N/A		M			0	0	0	0	0	0	0	0	0	0	0	0	0	0	0	0	0	0	0	0	0	0	0	0	0	0	0	
37			Delay and Disruption to Roseburn Terrace Bridge, Roseburn Tramstop, Roseburn Road Bridge IFC as SDS Letter 00238 in accordance with Schedule Part 4 paragraph 3.4.1.3.	17/06/2008	21/05/08 22/05/08 27/06/08 01/07/08 28/07/08 30/07/08 19/08/08 02/10/08 23/10/08 16/12/08	EMAIL SENT to SDS SDS-ULE9130-SW-LET-00238 25.1.2017/M/169 IE-PO CORR 104A 25.1.2017/JH/199 SDS-ULE9130-SW-LET-01130 25.1.2017/JH/256 SDS-ULE9130-SW-LET-01002 IE-INF CORR 169 25.1.2017/JH/595 25.1.2017/JH/697 25.1.2017/JH/1181	N/A	N/A		M			0	0	0	0	0	0	0	0	0	0	0	0	0	0	0	0	0	0	0	0	0	0	0	0	0	0	0	

CEC00624371_0140

ETN INFRACO NOTIFICATION of the CHANGE (INTC)
CONFIDENTIAL

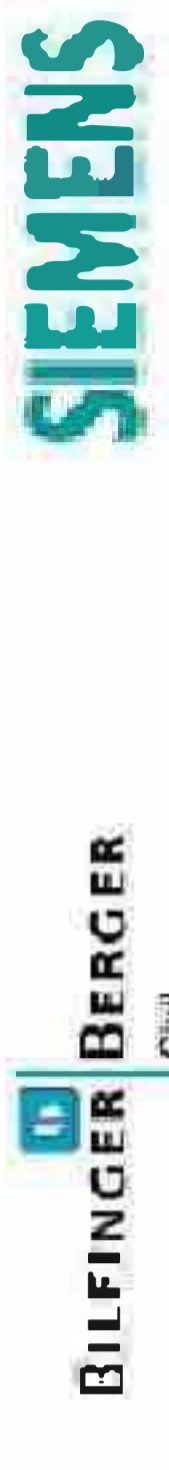


Table with columns: Ref, No, Description, Date Notified, Date of further letters, Letter Ref, Agreed in Principle?, Estimate Issued?, Compensation Event, Type, Change Type, Pricing Method, Location, Value Estimate (CAF), Allocation of Cost, Section, Change Order Value (BSQ). Rows 38-45 contain detailed change notification data.

ETN INFRACO NOTIFICATION OF CHANGE (NTOC)



Ref. No.	Item	TC#	Description	Date of further letters	Letter Ref	Agreed in Principle?	Estimated Event Type	Change Type	See Notes	See Notes	See Notes	Value Estimate (€M)	Value Estimate (€M)	Allocation of Cost	Section	Order Value (€M)
----------	------	-----	-------------	-------------------------	------------	----------------------	----------------------	-------------	-----------	-----------	-----------	---------------------	---------------------	--------------------	---------	------------------

46	1.00709	04/07/2008	1.00709	1.00709	1.00709	N/A	M									
47	04/07/2008	04/07/2008	04/07/2008	04/07/2008	04/07/2008	N/A	M									
48	1.00709	1.00709	1.00709	1.00709	1.00709	N/A	M									
49	2.0060000	2.0060000	2.0060000	2.0060000	2.0060000	Y	A									
50	1.00709	1.00709	1.00709	1.00709	1.00709	Y	A									
51	0.0000000	0.0000000	0.0000000	0.0000000	0.0000000											

ETN INFRACO NOTIFICATION of the CHANGE (INTC)

CONFIDENTIAL



Ref	The Change Order Ref	Description	Date Notified	Date of further letters	Letter Ref	Agreed in Principle?	Estimate Issued? (Y/N/0=N)	Compensation Event	Type	Change Type	Pricing Method	Value Estimate (comp)										Location								
												Sub-total	CAF	Siemens	Other	Consortium	Other	Plinies	Other	Plinies	Other		Plinies	Other	Plinies	Other	Plinies			
Ref	The Change Order Ref	Description	Date Notified	Date of further letters	Letter Ref	Agreed in Principle?	Estimate Issued? (Y/N/0=N)	Compensation Event	Type	Change Type	Pricing Method	£ Agreed	£ Not Agreed	Allocation of Cost	Section	Change Order Value (BSQ)														
																	£ Submitted (Excl of CAF)	£ CAF	£ Siemens	£ Other	£ Consortium	£ Other	£ Plinies	£ Other	£ Plinies	£ Other	£ Plinies	£ Other	£ Plinies	£ Other
52	3	7	05/06/2008	11/07/08 23/07/08 28/07/08 20/08/08 21/08/08 19/08/08 19/08/08 18/08/08 16/10/08 16/10/08 30/10/08 17/11/08 20/11/08 20/11/08 20/11/08 03/12/08 12/12/08 18/12/08 18/12/08 18/12/08 20/01/09 26/01/09 06/03/09 16/03/09 09/04/09 16/04/09	INC003 - Utilities diversions & associated works deemed more suitable for inclusion with infra works rather than MUFA works. Issued with drawings & schedule. Section 5b.	07/07/08 23/07/08 28/07/08 05/08/08 20/08/08 21/08/08 19/08/08 19/08/08 18/10/08 16/10/08 30/10/08 17/11/08 20/11/08 20/11/08 20/11/08 03/12/08 12/12/08 18/12/08 18/12/08 18/12/08 20/01/09 26/01/09 06/03/09 16/03/09 09/04/09 16/04/09	INC003 - Utilities diversions & associated works deemed more suitable for inclusion with infra works rather than MUFA works. Issued with drawings & schedule. Section 5b.	05/06/2008	11/07/08 23/07/08 28/07/08 20/08/08 21/08/08 19/08/08 19/08/08 18/08/08 16/10/08 16/10/08 30/10/08 17/11/08 20/11/08 20/11/08 20/11/08 03/12/08 12/12/08 18/12/08 18/12/08 18/12/08 20/01/09 26/01/09 06/03/09 16/03/09 09/04/09 16/04/09	Y	1	0	70,478	0	0	0	5,215	12,334	88,027	75,694	12,334	N/A	5B	75,694						
53	4	3	01/06/2008	07/07/08 23/07/08 28/07/08 05/08/08 20/08/08 21/08/08 19/08/08 19/08/08 18/10/08 16/10/08 30/10/08 17/11/08 20/11/08 20/11/08 20/11/08 03/12/08 12/12/08 18/12/08 18/12/08 18/12/08 20/01/09 26/01/09 06/03/09 16/03/09 09/04/09 16/04/09	INC004 - Utilities diversions & associated works deemed more suitable for inclusion with infra works rather than MUFA works. Issued with drawings & schedule. Section 5c.	01/06/2008	07/07/08 23/07/08 28/07/08 05/08/08 20/08/08 21/08/08 19/08/08 19/08/08 18/10/08 16/10/08 30/10/08 17/11/08 20/11/08 20/11/08 20/11/08 03/12/08 12/12/08 18/12/08 18/12/08 18/12/08 20/01/09 26/01/09 06/03/09 16/03/09 09/04/09 16/04/09	INC004 - Utilities diversions & associated works deemed more suitable for inclusion with infra works rather than MUFA works. Issued with drawings & schedule. Section 5c.	01/06/2008	1	0	31,389	0	0	0	2,324	5,495	38,218	33,723	5,495	N/A	6C	33,724							
53a			31/02/2008	26/06/09	25.1.201/AL/621	Y	1		1		94,031	0	0	94,031	9,068	126,513	0	126,513	0	0	0	0	0	0	0	0	0	0	0	
54	7		24/06/2008	15/07/08 28/07/08 31/07/08 05/08/08 01/09/08 22/09/08 26/09/08 17/12/08 18/12/08 07/01/09 07/01/09 20/01/09 20/01/09 26/01/09	INC007 - St Andrew Square Public Realm Works as CEC application (Draft). Site forming extended area over infra contract. Issued with drawings & Specification Volume 2 Part 7.	24/06/2008	15/07/08 28/07/08 31/07/08 05/08/08 01/09/08 22/09/08 26/09/08 17/12/08 18/12/08 07/01/09 07/01/09 20/01/09 20/01/09 26/01/09	INC007 - St Andrew Square Public Realm Works as CEC application (Draft). Site forming extended area over infra contract. Issued with drawings & Specification Volume 2 Part 7.	24/06/2008	0	0	0	0	0	0	0	0	0	0	0	0	0	0	0	0	0	0	0	0	0
55			29/07/2008	11/07/08	25.1.201/AL/919	N/A	N/A		M		0	0	0	0	0	0	0	0	0	0	0	0	0	0	0	0	0	0		
56			29/07/2008	02/09/08	25.1.201/AL/919	N/A	N/A		M		0	0	0	0	0	0	0	0	0	0	0	0	0	0	0	0	0	0		
57			29/07/2008	11/07/08	25.1.201/AL/918	N/A	N/A		M		0	0	0	0	0	0	0	0	0	0	0	0	0	0	0	0	0	0		
58			29/07/2008	11/07/08	25.1.201/AL/919	N/A	N/A		M		0	0	0	0	0	0	0	0	0	0	0	0	0	0	0	0	0	0		
59	5	5	31/07/2008	11/09/08 21/10/08 28/10/08 30/10/08 06/11/08	25.1.201/AL/937	Y	1		M		22,200	0	0	22,200	2,320	29,948	3,895	1,643	29,948	3,900	0	0	0	0	0	0	0	0		



ETN INFRACO NOTIFICATION of tie CHANGE (INTC)
CONFIDENTIAL

Withdrawn/Superseded/no cost
(delay on)
Change Order loss

Ref. No.	Change Order TCD	Description	Date Notified	Date of further letters	Letter Ref	Agreed in Principle?	Estimate Issued? 1=Y, 0=N	Compensation Event	Type	Change Type	Pricing Method	Value Estimate (GBP)							Allocation of Cost		Section	Change Order Value (BSQ)				
												Submitted (Euros) (CAF)	CH & P	Consortium Prelims	Other Prelims	Total	£ Agreed	£ Not Agreed	Sum of VET	Number						
50		Diversion of Existing Sewer at Gogarburn Bridge due to conflict with the existing 300mm dia soft lined sewer with the Gogarburn Bridge concrete piling potentially causing delay and disruption to the infra's intended sequence.	24/07/2008	06/08/08 08/08/08 11/08/08 25/08/08 09/09/08 16/09/08 19/09/08 26/09/08 24/09/08 30/09/08 02/10/08 03/10/08 10/10/08 29/10/08 31/10/08 05/11/08 18/12/08 07/01/09 17/01/09	file:INF CORR 053 SDS-ULE90130-07-LET-00350 25.1.201/AC/163 ETN(BSC)TIE&AEC#650009 file:INF CORR 118 25.1.201/VM471 file:INF CORR 182 25.1.201/JH/542 file:INF CORR 182 file:INF CORR 194 25.1.201/JH/582 Email BSC-T - Revised Estimate file:INF CORR 217 E-mail BSC - tie 25.1.201/JH/115 e-mail BSC - tie file:INF CORR 537 25.1.201/MRH/1247 E-mail BSC - tie	Y	1		M	1	4	8,553	30,122	0	0	38,675	3,194	2,862	6,271	49,532	25,945	23,987	N/A		7	0
51		Infra to investigate proposals for the re-use of the RBS Bunded Material within the final design.	08/09/2008	01/10/08 25/09/08 16/09/08 22/09/08 25/09/08 01/10/08 25/10/08 18/12/08 18/12/08 07/01/09 22/06/09 26/06/09	SDS-ULE90130-07-LET-00359 25.1.201/GC/366 file:INF CORR 119 file:INF CORR 140 SDS-ULE90130-SW-4ET-01204 25.1.201/AC/29 file:INF CORR 197 25.1.201/KC/1011 file:INF CORR 503 file:INF CORR 537 25.1.201/MRH/1247 25.1.201/JH/2897 25.1.201/JH/2257	Y	1		M	1	4	1,994	162,953	0	0	164,947	1,252	11,466	27,116	194,762	0	194,762	N/A		7	0
52		Draw down from Design Revisions Summary 2 - Section Review contributions to the Upper and Ingleton Park & Ride and Item 11 Scottish Power connections to Phase 13 sub-stations, in Schedule Pg 4 Appendix Table 1	08/09/2008	11/09/08 09/10/08 28/11/08 18/12/08 07/01/09 15/01/09 29/01/09	file:INF CORR 004 ETN(BSC)TIE&AEC#650009 file:INF CORR 203 ETN(BSC)TIE&AEC#650235 file:INF CORR 287 25.1.201/MRH/1247 file:INF CORR 555 file:INF CORR 544	N/A	N/A		Q		0	0	0	0	0	0	0	0	0	0	0	DPS	2	11	7	0
53		Tensioning of Overhead Contact System - tensioning method, comprising an Auto Tensioned Trrolley Wire for the street running a second Auto Tensioned Catenary System for Haymarket (exclusive) to the Airport.	15/09/2008	22/09/08 02/10/08	ETN(BSC)TIE&AEC#650012 file:INF CORR 106 file:INF CORR 202	Y	0		I		4	0	0	0	0	0	0	0	0	0	0	0	N/A		All	0
54	9	TNC009 - Ocean Terminal Revised Finishes	29/07/2008	21/10/08 10/10/08 23/10/08 06/11/08 18/11/08 03/12/08 18/12/08 18/12/08 07/01/09 09/04/09 06/05/09	file:INF CORR 027 25.1.201/AL/281 file:INF CORR 223 25.1.201/ML/759 file:INF CORR 337 25.1.201/ML/570 file:INF CORR 443 file:INF CORR 637 25.1.201/ML/4211 25.1.201/MRH/1247 file:INF CORR 1211/MP 25.1.201/ML/424	Y	1		I	4	1,231	0	3,829	0	0	3,829	0	287	0	4,166	0	4,166	DPS	18	1A	0
55		Murrayfield Stadium Retaining Walls Introduce visual pattern to Murrayfield RTW	23/07/2008	04/07/08 24/07/08 08/08/08 16/08/08 21/08/08 05/09/08 07/10/08 09/10/08 18/12/08 07/01/09 04/02/09 12/02/09 27/02/09 06/03/09 18/03/09 31/03/09 09/04/09 26/05/09	SDS-ULE90130-05-LET-00285 25.1.201/JH/267 file:INF CORR_050 file:INF CORR_059 SDS-ULE90130-05-LET-00310 25.1.201/JH/389 file:INF CORR 138 25.1.201/JH/570 SDS-ULE90130-SW-LET-01227 file:INF CORR 637 25.1.201/MRH/1247 SDS-ULE90130-SW-01967 25.1.201/MOC/1933 file:INF CORR 784 25.1.201/MOC/1799 file:INF CORR 1047 25.1.201/MOC/2134 file:INF CORR 1218/CO 25.1.201/MOC/2724	Y	1		M	1	4	2,263	0	0	0	2,263	276	204	0	3,243	0	3,243	N/A		5A	0

CEC00624371_0144



ETN INFRACO NOTIFICATION of tie CHANGE (INTC)
CONFIDENTIAL

Withdrawn/Suspended/Not
Delayed Only
Client Order Issued

Ref	Tie	Change Order TOD	Description	Date Notified	Date of further letters	Letter Ref	Agreed in Principle?	Estimate Issued? 1=Y, 0=N	Compensation Event	Type	Change Type	Pricing Method	Value Estimate (GBP)										Allocation of Cost		Section	Change Order Value (BSO)		
													£ Submitted (Euros) (CAF)										£ Agreed	£ Not Agreed			Psum or VE	Number
													SDS	Bilfinger	Siemens	CAF	Sub-total	H & P	Consortium Prelims	Other Prelims	Total							
74		63	Sewer Diversion, Gogar Landfill	05/08/2008	25/08/08 17/09/08 25/09/08 01/10/08 19/12/08 07/01/09 26/02/09 06/05/09 08/06/09	file INF CORR 075 25.1.201/SC/416 file INF CORR 160 25.1.201/IC/530 Email: T... - EST...@... file INF CORR 196 25.1.201/JH/2796 file INF CORR 537 25.1.201/MRH/1247 25.1.201/JH/1741 25.1.201/SC/2529 file INF CORR 1426/AS file INF CORR 1598/MP	Y	1		M	1	4		1,335	0	0	0	1,335	0	0	0	1,434	1,434	0	N/A	7	1,434	
74a			Sewer Diversion, Gogar Landfill				TBA	0		M	1	4	0	0	0	0	0	0	0	0	0	0	0	0	N/A	7		
75		47	Temporary Access Ramp from M9 to A66	05/08/2008	25/08/08 17/09/08 13/10/08 19/10/08 20/10/08 31/10/08 29/10/08 18/12/08 07/01/09 27/03/09 02/04/09	file INF CORR 076 25.1.201/SC/416 file INF CORR 161 25.1.201/MRH/665 file INF CORR 234 25.1.201/MRH/223 25.1.201/AL/413 file INF CORR 296 file INF CORR 537 25.1.201/MRH/1247 file INF CORR 1129 file INF CORR 1365	Y	1		M	1	4	0	12,222	0	0	0	12,222	1,222	004	2,189	14,487	14,489	2,290	N/A	6	14,189	
76		15	Gogar Depot: Public Tramstop proposals (SRIP options 4B & 4C)	08/08/2008	01/08/08 20/08/08 19/09/08 19/09/08 03/10/08 18/12/08 07/01/09 23/01/09 29/01/09 30/01/09 12/03/09 08/04/09 19/05/09 12/06/09 16/06/09	25.1.201/JH/538 file INF CORR 096 25.1.201/SC/395 SDS-ULE90130-06-LET-00106 SDS-ULE90130-06-LET-00107 25.1.201/AL/427 file INF CORR 537 25.1.201/MRH/1247 file INF CORR 622 25.1.201/JH/1440 25.1.201/JH/1442 SDS-ULE90130-SW-LET-01448 SDS-ULE90130-05-LET-00382 25.1.201/JH/2671 file INF CORR 1559/BS 25.1.201/JH/2065	Y	1		I	4	1,2 & 3	341,318	0	348,151	0	694,469	34,132	25,258	0	743,859	0	743,859	N/A	0	0		
77			DESIGN ONLY to Amend line of route design section 5C (Batch 5-22) Prior approval application Ref: 08/0221 1/P/A as tie letter INF CORR 055 dated 25th July 2008	29/08/2008	25/07/08 18/08/08 18/09/08 03/10/08 10/10/08 16/10/08 29/10/08 18/12/08 07/01/09 16/01/09 03/02/09 29/04/09 15/06/09	file INF CORR 085 SDS-ULE90130-05-LET-00317 25.1.201/JH/430 file INF CORR 155 25.1.201/MRH/613 file INF CORR 224 25.1.201/MRH/691 file INF CORR 291 file INF CORR 537 25.1.201/MRH/1247 25.1.201/AL/1174 SDS-ULE90130-SW-LET-01367 file INF CORR 1350/IE 25.1.201/JH/2635	Y (Part)	1		M	4	4	2,962	43,408	0	0	46,369	256	3,431	7,596	57,693	0	57,693	N/A	50	0		
78			Design Only for Alteration to design of Edinburgh Airport Tramstop and retaining wall design at Jubilee Road as tie letter INF CORR 072 dated 5th August 2008	02/09/2008	13/08/08 19/08/08 14/07/08 01/08/08 05/08/08 20/08/08 28/08/08 22/09/08 25/09/08 02/10/08 09/10/08 14/10/08 23/10/08 23/10/08 27/10/08 30/10/08 06/11/08 14/11/08 21/11/08 01/12/08 10/12/08 09/01/09 12/01/09 15/01/09 29/01/09 05/02/09 16/02/09 09/02/09 20/02/09 19/03/09 09/04/09	SDS-ULE90130-07-LET-00337 SDS-ULE90130-07-LET-00344 25.1.201/JH/261 25.1.201/SR/321 file INF CORR 072 SDS-ULE90130-07-LET-00363 file INF CORR 122 25.1.201/JH/444 25.1.201/JH/518 file INF CORR 184 25.1.201/JH/567 SDS-ULE90130-SW-LET-01228 25.1.201/MRH/675 file INF CORR 258 SDS-ULE90130-SW-LET-01248 25.1.201/MRH/738 file INF CORR 264 25.1.201/MRH/664 file INF CORR 338 25.1.201/MRH/593 SDS-ULE90130-SW-LET-01305 SDS-ULE90130-SW-LET-01312 25.1.201/OC/1265 file INF CORR 468 25.1.201/MRH/1291 file INF CORR 656 25.1.201/OC/1481 25.1.201/OC/1462 file INF CORR 723 25.1.201/MRH/1700 file INF CORR 1059 file INF CORR 1204/MP	Y	1		M	4	4	41,414	0	0	0	41,414	4,141	3,285	0	48,620	0	48,620	N/A	7	0		
79			Instruction from CEO to design an alternative layout for Haymarket Junction	03/08/2008	20/08/08 02/10/08 16/10/08 16/10/08 22/10/08 16/12/08 18/12/08 07/01/09 03/02/09 10/02/09 12/02/09 20/02/09 25/02/09 26/02/09 27/02/09 05/03/09 26/05/09	SDS-ULE90130-01-LET-00768 25.1.201/JH/452 25.1.201/JH/573 file INF CORR 238 SDS-ULE90130-SW-LET-01232 25.1.201/JH/740 25.1.201/JH/1181 file INF CORR 537 25.1.201/MRH/1247 SDS-ULE90130-SW-LET-01367 SDS-ULE90130-SW-LET-01379 25.1.201/JH/1580 file INF CORR 728 25.1.201/OC/1784 25.1.201/JH/1748 file INF CORR 794 25.1.201/OC/1799 25.1.201/OC/2724	Y	1		M	4	4	44,436	0	0	0	44,436	4,444	3,288	0	52,168	0	52,168	N/A	10	0		

CEC00624371_0146

ETN INFRACO NOTIFICATION of the CHANGE (INTC) CONFIDENTIAL



Withdrawn/Superseding cost Delay Only

Table with columns: Ref. No., Ref. No., The Change Order TCO, Description, Date Notified, Date of further letters, Letter Ref, Agreed in Principle?, Estimate Issued?, Compensation Event, Type, Change Type, Pricing Method, SCS, Bilfinger, Siemens, CAF, Submitted (Euros) (CAF), Value Estimate (comp), Consortium Prtelms, Other Prtelms, Total, E Agreed, 2. Not Agreed, Allocation of Cost, Location, Section, Change Order Value (BSQ)



ETN INFRACO NOTIFICATION of tie CHANGE (INTC)
CONFIDENTIAL

Withdrawn/Superseded/Not
Delayed/Only
Change Order Issued

Ref	Title	Change Order TOC	Description	Date Notified	Date of further letters	Letter Ref	Agreed in Principle?	Estimate Issued? 1=Y, 0=N	Compensation Event	Type	Change Type	Pricing Method	Value Estimate (GBP)							Allocation of Cost		Location	Change Order Value (BSO)						
													£ Submitted (Euros) (CAF)							£ Agreed	£ Not Agreed			Psum or VE	Number				
													See Notes	See Notes	See Notes	See Notes	See Notes	See Notes	See Notes							See Notes	See Notes	See Notes	See Notes
95	10		MUDFA TO INFRACO transfer of Utilities Diversion Section 1A, 1B, 1C and 1D	08/09/2009	20/09/09 20/09/09 21/09/09 17/10/09 14/10/09 16/10/09 23/10/09 27/10/09 29/10/09 17/11/09 20/11/09 23/11/09 24/11/09 27/11/09 29/11/09 12/12/09 12/12/09 18/12/09 18/12/09 19/12/09 18/12/09 05/01/09 07/01/09 20/11/09 20/11/09 20/01/09 02/04/09 09/04/09 16/04/09 27/04/09 29/04/09	file INF CORR 251 251 201/CC/384 251 201/AL/367 251 201/IL/393 file INF CORR 157 Email - Contract Services file INF CORR 244 251 201/IL/754 file INF CORR 273 251 201/MRH/796 file INF CORR 387 251 201/MRH/973 file INF CORR 407 file INF CORR 409 251 201/MRH/820 251 201/MRH/829 file INF CORR 521 file INF CORR 508 251 201/MRH/1183 file INF CORR 537 251 201/MRH/209 file INF CORR 489 251 201/MRH/229 251 201/MRH/247 file INF CORR 598 file INF CORR 617 251 201/MRH/389 file INF CORR 1193 09/04/09 251 201/MRH/2303 file INF CORR 1300/GCN file INF CORR 1332/20																							
97	11	4 13	Bus Installation at Leith Walk	17/07/2009	20/06/09 14/07/09 31/07/09 21/09/09 10/10/09 17/09/09 23/09/09 23/09/09 22/09/09 06/10/09 02/10/09 16/10/09 27/10/09 13/11/09 20/11/09 02/12/09 05/01/09 22/01/09	Email BR1 - re Estimate file INF CORR 090 email BR1 - re INF CORR 090 251 201/JH/528 251 201/AL/393 251 201/AL/475 file INF CORR 158 251 201/AL/520+Core Estimate 251 201/IL/520 file INF CORR 175 file INF CORR 202 email Infracore SDS (MRH) file INF CORR 240 file INF CORR 276 file INF CORR 389 251 201/MRH/554 file INF CORR 441 251 201/IL/237 file INF CORR 638																							
98	14		Power Connections Phase 1a	08/08/2009	25/09/09 16/10/09 26/11/09 09/12/09 18/12/09 04/01/09 07/01/09 09/01/09 22/01/09 28/01/09 29/01/09 10/03/09 16/03/09 30/03/09	file INF CORR 084 ETN(BSO)TIE&ABC#50055 file INF CORR 244 ETN(BSO)TIE&ABC#50235 ETN(BSO)TIE&ABC#50253 file INF CORR 637 file INF CORR 556 251 201/MRH/247 ETN(BSO)TIE&ABC#50268 ETN(BSO)TIE&ABC#50357 file INF CORR 642 file INF CORR 644 ETN(BSO)TIE&ABC#50485 file INF CORR 1035 file INF CORR 1079																							
99			Balfour Street Crossing	20/10/09	01/10/09 05/09/09 22/10/09 24/11/09 26/11/09 12/12/09 23/02/09 26/03/09 13/04/09 20/04/09 26/05/09	SDS ULES0130-01-LET-00748 251 201/CC/264 file INF CORR 104 251 201/JH/404 file INF CORR 412 251 201/MRH/119 251 201/JH/113 SDS ULES0130-01-LET-00932 251 201/JH/202 file INF CORR 1194/DS 251 201/JH/2334 251 201/CC/2724																							
99			Change order request - SDS Development Workshop Attendance	31/07/2009	30/07/09 23/07/09 21/08/09 26/09/09 16/12/09 18/12/09 07/01/09 23/02/09 12/03/09	file INF CORR 102 251 201/JH/541 251 201/JH/118 file INF CORR 637 251 201/MRH/1947 SDS ULES0130-01-LET-01104 251 201/CC/1808																							
91			Confirmation of Verbal Instruction Reference ETN002 - Compensation Event Notice Edinburgh Park Structure (S21) Earthworks/Foundations	18/09/2009	02/10/09 03/10/09 23/10/09 30/10/09 06/11/09 12/01/09 16/03/09	251 201/MRH/429 251 201/JH/580 file INF CORR 204 251 201/IL/756 file INF CORR 306 251 201/CC/266 251 201/CC/1272 file INF CORR 639																							

CEC00624371_0148

ETN INFRAQO NOTIFICATION OF THE CHANGE (INTC) CONFIDENTIAL



Ref.	The Change Order Ref.	Description	Date Notified	Date of further letters	Letter Ref	Agreed in Principle?	Estimate Issued? (Y/N/0=N)	Compensation Event	Type	Change Type	Rifling Method	Value Estimate (comp)										Location									
												CAF		Siemens		Other P. P.		Consortium		Other Profiles		Total		E. Agreed		E. Not Agreed		Allocation of Cost		Section	Change Order Value (BSQ)
												SIGS	Bilfinger	Siemens	CAF	Submitted	Other P. P.	Consortium	Other Profiles	Total	E. Agreed	E. Not Agreed	Form or V/E	Number	Site Notes						
92		Design the Russell Road raising will to ensure that this kerbs flashing with the existing sewer as per the letter INF_CORR_051 dated 23/07/08. 11/09/2008	11/09/2008	23/07/08 28/07/08 02/09/08 29/09/08 02/10/08 15/10/08 22/10/08 23/10/08 29/10/08 05/11/08 13/11/08 20/11/08 23/11/08 17/12/08 26/03/09 27/04/09 22/06/09	INF CORR 051 25.1.201/AH/213 SDS-ULE90130-05-LET-00324 25.1.201/AH/487 SDS-ULE90130-SW-LET-00330 25.1.201/AH/674 SDS-ULE90130-SW-LET-01530 25.1.201/AH/691 INF CORR 251 25.1.201/AH/737 INF CORR 260 25.1.201/AH/840 INF CORR 355 25.1.201/BOC/679 25.1.201/BOC/676 25.1.201/BOC/676 25.1.201/AH/198 SDS-ULE90130-SW-LET-01460 25.1.201/AH/2420 25.1.201/AH/2901 25.1.201/AH/626 INF CORR 246 25.1.201/BOC/246 25.1.201/BOC/693 16/12/08 18/12/08 07/01/09	TBA	1	M																							
93		Lindsay Road, Ocean Drive, Ocean Terminal & Lower Place Planning Permission 14/07/2008	14/07/2008	17/06/08 28/07/08 09/09/08 22/09/08 12/11/08 16/12/08 20/12/08 17/03/09 17/03/09	PE-ULE90130-07-LET-00339 25.1.201/AH/295 PE-ULE90130-07-LET-00370 25.1.201/AH/614 25.1.201/BOC/693 25.1.201/AH/181 INF CORR 775 25.1.201/BOC/1953 25.1.201/BOC/214 25.1.201/AH/258 INF CORR 069 25.1.201/AH/399 PE-ULE90130-06-LET-00105 25.1.201/ARH/689 25.1.201/BOC/693 25.1.201/BOC/693 INF CORR 054	N	1	M																							
94		Millen Hotel Full Planning 14/07/2008	14/07/2008	02/09/08 11/09/08 02/10/08 16/10/08 30/10/08 21/11/08 30/10/08 07/11/08 13/11/08 08/12/08 03/02/09 27/02/09 07/02/09 05/03/09 14/04/09 16/04/09 20/04/09 28/05/09 13/06/09	SDS-ULE90130-01-LET-00784 25.1.201/AH/489 SDS-ULE90130-SW-LET-01242 INF CORR 235 25.1.201/AH/732 INF CORR 299 25.1.201/AH/673 SDS-ULE90130-SW-LET-01514 SDS-ULE90130-SW-LET-01367 SDS-ULE90130-SW-LET-01517 INF CORR 754 INF CORR 1799 INF CORR 1042 25.1.201/BOC/2215 25.1.201/AH/232 SDS-ULE90130-SW-LET-00279 25.1.201/AH/258 ULE90130-05-LET-00300 INF CORR 056 25/07/08 29/09/08 23/09/08 02/10/08 09/10/08 15/10/08 30/10/08 13/11/08 24/11/08 18/12/08 07/01/09 03/02/09 12/02/09 19/02/09 27/02/09 06/03/09 17/03/09 18/03/09 19/03/09 27/03/09 17/04/09 06/04/09 08/05/09 18/05/09	Y	1	M																							
95		Additional Dept of Prior Approvals 14/07/2008	14/07/2008	05/09/08 22/09/08 09/09/08 10/10/08 12/11/08 14/11/08 17/12/08	INF CORR 069 25.1.201/AH/399 PE-ULE90130-06-LET-00105 25.1.201/ARH/689 25.1.201/BOC/693 25.1.201/BOC/693	N	1	0																							
96		Sharnick Place DEO / technical Treatments 24/07/2008	24/07/2008	02/09/08 11/09/08 02/10/08 16/10/08 30/10/08 21/11/08 30/10/08 07/11/08 13/11/08 08/12/08 03/02/09 27/02/09 07/02/09 05/03/09 14/04/09 16/04/09 20/04/09 28/05/09 13/06/09	SDS-ULE90130-01-LET-00784 25.1.201/AH/489 SDS-ULE90130-SW-LET-01242 INF CORR 235 25.1.201/AH/732 INF CORR 299 25.1.201/AH/673 SDS-ULE90130-SW-LET-01514 SDS-ULE90130-SW-LET-01367 SDS-ULE90130-SW-LET-01517 INF CORR 754 INF CORR 1799 INF CORR 1042 25.1.201/BOC/2215 25.1.201/AH/232 SDS-ULE90130-SW-LET-00279 25.1.201/AH/258 ULE90130-05-LET-00300 INF CORR 056 25/07/08 29/09/08 23/09/08 02/10/08 09/10/08 15/10/08 30/10/08 13/11/08 24/11/08 18/12/08 07/01/09 03/02/09 12/02/09 19/02/09 27/02/09 06/03/09 17/03/09 18/03/09 19/03/09 27/03/09 17/04/09 06/04/09 08/05/09 18/05/09	Y	1	M																							
97		Bligham road Bridge Amending / technical Design 14/07/2008	14/07/2008	23/07/08 25/07/08 29/09/08 23/09/08 02/10/08 09/10/08 15/10/08 30/10/08 13/11/08 24/11/08 18/12/08 07/01/09 03/02/09 12/02/09 19/02/09 27/02/09 06/03/09 17/03/09 18/03/09 19/03/09 27/03/09 17/04/09 06/04/09 08/05/09 18/05/09	25.1.201/AH/258 ULE90130-05-LET-00300 INF CORR 056 SDS-ULE90130-05-LET-00329 25.1.201/AH/691 SDS-ULE90130-SW-LET-01226 INF CORR 228 25.1.201/ARH/721 25.1.201/AH/607 25.1.201/AH/607 INF CORR 410 INF CORR 410 INF CORR 537 25.1.201/ARH/1247 SDS-ULE90130-SW-LET-01367 25.1.201/AH/1574 SDS-ULE90130-SW-LET-01396 INF CORR 753 INF CORR 754 INF CORR 849 INF CORR 849 SDS-ULE90130-SW-LET-01460 INF CORR 1045 25.1.201/AH/2010 SDS-ULE90130-SW-LET-01476 25.1.201/AH/62178 25.1.201/AH/2178 INF CORR 1410/05 25.1.201/AH/2648	Y	1	D																							
98		Notified Departure due to the issue of SIGS Design Programme V32. 15/10/08	11/09/2008	30/09/08 15/10/08 13/11/08	INF CORR 150 25.1.201/ARH/695 25.1.201/BOC/486	N/A		M																							
99		Notified Departure due to the issue of SIGS Design Programme V33. 15/10/08	11/09/2008	30/09/08 15/10/08 13/11/08	INF CORR 150 25.1.201/ARH/695 INF CORR 351	N/A		M																							
100		Notified Departure due to the issue of SIGS Design Programme V34. 15/10/08	11/09/2008	30/09/08 15/10/08 13/11/08	INF CORR 150 25.1.201/ARH/695 INF CORR 351	N/A		M																							



ETN INFRACO NOTIFICATION of tie CHANGE (INTC)
CONFIDENTIAL

Withdrawal/Superseding/Relay only
Change Order issued

Ref	Tie	Change Order TCO	Description	Date Notified	Date of further letters	Letter Ref	Agreed in Principle?	Estimate Issued? %Y, D=N	Compensation Event	Type	Change Type	Pricing Method	Value Estimate (GBP)										Allocation of Cost		Section	Change Order Value (BSO)					
													£ Submitted (Euros if CAF)										£ Agreed	£ Not Agreed			Sum of VE	Number			
													SDS	Bilfinger	Siemens	CAF	Sub-total	H & P	Consortium Prelims	Other Prelims	Total	£ Agreed	£ Not Agreed	Sum of VE	Number	Notes					
101			Netrad Degradation due to the use of SD3 Design programme V95.	11/09/2008	20/09/08 15/10/08 13/11/08	25.L.201/SD/486 25.L.201/SD/190 25.L.201/MRH/095 25.L.201/SD/251	N/A	N/A		M			0	0	0	0	0	0	0	0	0	0	0	0	0	0	0	0		0	
102			Section 5C - Gogar Church and Gogar Castle	27/09/2008	26/09/08 03/10/08 27/08/08 25/07/08 26/09/08 17/09/08	RFI 0045 25.L.201/TM/180 25.L.201/SD/190 25.L.201/MRH/181 25.L.201/TM/287 25.L.201/TM/441 CVI Ref: 50.0001 25.L.201/SD/163	N	0		D	I	1,2,3,4	0	0	0	0	0	0	0	0	0	0	0	0	0	0	0	0	0	5	0
103			IFC Drawing Changes - A5 Underpass	09/06/2009	25/06/09 06/07/09	25.L.201/MRH/2788 25.L.201/SD/287	TBA	0		D	I	1,2,3,4	0	0	0	0	0	0	0	0	0	0	0	0	0	0	0	0	0	50	0
104			IFC Drawing Change Blair Drive RTW	15/09/2008	23/09/08 27/10/08 23/10/08 29/10/08 30/10/08 04/11/08 04/12/08 11/12/08 04/02/09 07/05/09 27/05/09 02/06/09 18/06/09	25.L.201/SD/497 25.L.201/SD/179 25.L.201/JH/576 25.L.201/SD/757 25.L.201/JH/797 25.L.201/SD/312 25.L.201/MRH/434 25.L.201/MRH/134 25.L.201/JH/1473 25.L.201/SD/67 25.L.201/MRH/2160 25.L.201/SD/2564 25.L.201/SD/151/TC 25.L.201/SD/1539/MP 25.L.201/SD/1683/TC	TBA	1		M	I	1,4	0	2,747,351	3,995	0	2,750,726	161	203,243	480,783	3,434,973	0	3,434,973	0	0	0	0	0	0	5A	0
105			IFC Drawing Change Bilsgreen Road Retaining Wall	15/09/2008	23/09/08 27/10/08 23/10/08 29/10/08 30/10/08 04/11/08 04/12/08 11/12/08 04/02/09 16/03/09 02/04/09	25.L.201/SD/497 25.L.201/SD/179 25.L.201/JH/576 25.L.201/SD/757 25.L.201/JH/797 25.L.201/SD/312 25.L.201/MRH/434 25.L.201/MRH/134 25.L.201/JH/1472 25.L.201/SD/67 25.L.201/MRH/2160	TBA	0		M	I	1,4	0	0	0	0	0	0	0	0	0	0	0	0	0	0	0	0	0	5A	0
106			IFC Drawing Change Murrayfield Stadium RTW	15/09/2008	23/09/08 23/10/08 30/10/08 04/11/08 04/12/08 11/12/08 16/03/09 02/04/09	25.L.201/SD/497 25.L.201/SD/179 25.L.201/SD/757 25.L.201/SD/312 25.L.201/MRH/434 25.L.201/MRH/134 25.L.201/SD/67 25.L.201/MRH/2160	TBA	0		M	I	1,4	0	0	0	0	0	0	0	0	0	0	0	0	0	0	0	0	0	5A	0
107			IFC Drawing Change Bankhead RTW	15/09/2008	23/09/08 02/10/08 23/10/08 29/10/08 30/10/08 04/11/08 04/12/08 11/12/08 04/02/09 16/03/09 02/04/09	25.L.201/SD/493 25.L.201/SD/179 25.L.201/JH/576 25.L.201/SD/757 25.L.201/JH/797 25.L.201/SD/312 25.L.201/MRH/434 25.L.201/MRH/134 25.L.201/JH/1472 25.L.201/SD/67 25.L.201/MRH/2160	TBA	0		M	I	4	0	0	0	0	0	0	0	0	0	0	0	0	0	0	0	0	5A	0	
108			IFC Drawing Change Gyle Stop RTW	15/09/2008	23/09/08 23/10/08 30/10/08 04/11/08 04/12/08 11/12/08 16/03/09 02/04/09	25.L.201/SD/494 25.L.201/SD/179 25.L.201/SD/757 25.L.201/SD/312 25.L.201/MRH/434 25.L.201/MRH/134 25.L.201/SD/67 25.L.201/MRH/2160	TBA	0		M	I	1,4	0	0	0	0	0	0	0	0	0	0	0	0	0	0	0	0	50	0	
109			IFC Drawing Change Murrayfield Underpass	15/09/2008	23/09/08 23/10/08 30/10/08 04/11/08 04/12/08 11/12/08 16/03/09 02/04/09	25.L.201/SD/495 25.L.201/SD/179 25.L.201/SD/757 25.L.201/SD/312 25.L.201/MRH/434 25.L.201/MRH/134 25.L.201/SD/67 25.L.201/MRH/2160	TBA	0		M	I	1,4	0	0	0	0	0	0	0	0	0	0	0	0	0	0	0	0	50	0	
110			IFC Drawing Change South Gyle Access Bridge	15/09/2008	23/09/08 27/10/08 23/10/08 29/10/08 30/10/08 04/11/08 04/12/08 11/12/08 16/03/09 02/04/09	25.L.201/SD/496 25.L.201/SD/179 25.L.201/JH/576 25.L.201/SD/757 25.L.201/JH/797 25.L.201/SD/312 25.L.201/MRH/434 25.L.201/MRH/134 25.L.201/SD/67 25.L.201/MRH/2160	TBA	0		M	I	1,4	0	0	0	0	0	0	0	0	0	0	0	0	0	0	0	0	50	0	

CEC00624371_0150

ETN INFRACO NOTIFICATION of the CHANGE (INTC) CONFIDENTIAL



Ref.	The Change Order Ref.	Description	Date Notified	Date of further letters	Letter Ref	Agreed in Principle?	Estimate Issued? (Y/N/0=)	Compensation Event	Change Type	Pricing Method	Value Estimate (copy)											Change Order Value (BSQ)																																																																																																																																																																					
											Value Estimate (copy)		Allocation of Cost		Location																																																																																																																																																																												
											See Notes	See Notes	See Notes	See Notes	£ Agreed	£ Not Agreed	£ Agreed	£ Not Agreed	Number	Section	See Notes																																																																																																																																																																						
111	TFC Drawing Change Glasgow Bridge	19/09/2008	30/09/08 15/10/08 16/10/08 30/10/08 04/11/08 14/12/08 16/03/09 16/03/09 01/04/09 02/04/09 15/04/09 01/05/09 07/05/09 12/05/09 14/05/09 18/05/09 22/05/09	25.1.201/AMH/193 25.1.201/AMH/679 25.1.201/AMH/705 He NF CORR 313 25.1.201/AMH/694 He NF CORR 313 25.1.201/AMH/134 He NF CORR 887 25.1.201/AMH/134 25.1.201/AMH/2160 He NF CORR 1237/GMCG 25.1.201/ADR/2508 He NF CORR 2508 25.1.201/ADR/2524 He NF CORR 1489/GMCG 25.1.201/ADR/2656 He NF CORR 1489/GMCG	TBA	0	M	1, 4	0	232,846	3,395	0	294,241	0	294,240	0	0	40,745	17,231	0	0	0	0	0	294,240	0	7	0																																																																																																																																																															
																													112	TFC Drawing Change Haymarket Viaduct	19/09/2008	30/09/08 15/10/08 16/10/08 30/10/08 04/11/08 14/12/08 16/03/09 16/03/09 02/04/09	25.1.201/AMH/193 He NF CORR 193 25.1.201/AMH/679 25.1.201/AMH/705 He NF CORR 193 25.1.201/AMH/694 He NF CORR 434 25.1.201/AMH/134 He NF CORR 887 25.1.201/AMH/2160 He NF CORR 887	TBA	0	M	1, 4	0	0	0	0	0	0	0	0	0	0	0	0	0	0	0	0	2	0																																																																																																																																				
																																																								113	TFC Drawing Change Russell Road Bridge	19/09/2008	30/09/08 15/10/08 16/10/08 30/10/08 04/11/08 14/12/08 16/03/09 16/03/09 02/04/09	25.1.201/AMH/193 He NF CORR 193 25.1.201/AMH/679 25.1.201/AMH/705 He NF CORR 313 25.1.201/AMH/694 He NF CORR 434 25.1.201/AMH/134 He NF CORR 887 25.1.201/AMH/2160 He NF CORR 887	TBA	0	M	1, 4	0	0	0	0	0	0	0	0	0	0	0	0	0	0	0	2	0																																																																																																										
																																																																																		114	TFC Drawing Change Carnicknowe Bridge	19/09/2008	02/07/08 15/10/08 16/10/08 30/10/08 04/11/08 14/12/08 16/03/09 16/03/09 02/04/09 09/04/09 09/04/09 07/05/09 12/05/09 02/06/09 05/06/09	25.1.201/AMH/507 Email BB - paralets 25.1.201/AMH/679 25.1.201/AMH/705 He NF CORR 313 25.1.201/AMH/694 He NF CORR 434 25.1.201/AMH/134 He NF CORR 887 25.1.201/AMH/2160 He NF CORR 1222/GMCG He NF CORR 1022/GM 25.1.201/ADR/2508 He NF CORR 2508 25.1.201/ADR/2524 He NF CORR 1489/GMCG	Y (Part)	0	M	1, 4	239,909	3,395	0	249,304	0	303,042	41,684	17,793	0	0	0	0	0	0	0	0	5A	0																																																																															
																																																																																																													115	TFC Drawing Change Water of Leith Bridge	19/09/2008	05/10/08 15/10/08 16/10/08 30/10/08 04/11/08 14/12/08 16/03/09 16/03/09 02/04/09 09/04/09 09/04/09 07/05/09 12/05/09 02/06/09 05/06/09	25.1.201/AMH/193 He NF CORR 193 25.1.201/AMH/679 25.1.201/AMH/705 He NF CORR 313 25.1.201/AMH/694 He NF CORR 434 25.1.201/AMH/134 He NF CORR 887 25.1.201/AMH/2160 He NF CORR 1222/GMCG He NF CORR 1022/GM 25.1.201/ADR/2508 He NF CORR 2508 25.1.201/ADR/2524 He NF CORR 1489/GMCG	TBA	0	M	1, 4	0	0	0	0	0	0	0	0	0	0	0	0	0	0	0	5A	0																																																					
																																																																																																																																							117	Extra Demolition required at Russell Road Retaining wall to Roseburn Street Units & Roseburn Garage	18/09/2008	21/10/08 05/11/08 11/11/08 21/01/09 10/02/09 23/02/09 23/02/09 07/04/09 16/08/08 23/09/08 22/10/08 27/10/08 31/10/08 04/11/08 09/12/08 12/12/08 16/12/08 23/01/09 03/03/09 16/03/09 21/04/09 28/04/09	TO 086, PF1 102 25.1.201/AL/736 He NF CORR 325 25.1.201/AL/1316 25.1.201/AL/1316 He NF CORR 233 He NF CORR 233 25.1.201/AMH/1686 25.1.201/AMH/1701 He NF CORR 153 He NF CORR 258 He NF CORR 259 25.1.201/AMH/773 He NF CORR 259 25.1.201/AMH/778 He NF CORR 3178 25.1.201/AMH/696 25.1.201/AMH/693 He NF CORR 459 25.1.201/AMH/162 25.1.201/AMH/173 He NF CORR 803 He NF CORR 803 25.1.201/AMH/1533 He NF CORR 1300/DC 25.1.201/AMH/2450 25.1.201/AMH/2524	Y (Part)	0	M	A	0	0	0	0	0	0	0	0	0	0	0	0	0	0	0	5A	0																											
																																																																																																																																																																	119	TFC Drawing Change Cathedral Lane Station	14/10/2008	16/08/08 23/09/08 22/10/08 27/10/08 31/10/08 04/11/08 09/12/08 12/12/08 16/12/08 23/01/09 03/03/09 16/03/09 21/04/09 28/04/09	He NF CORR 153 He NF CORR 258 He NF CORR 259 25.1.201/AMH/773 He NF CORR 259 25.1.201/AMH/778 He NF CORR 3178 25.1.201/AMH/696 25.1.201/AMH/693 He NF CORR 459 25.1.201/AMH/162 25.1.201/AMH/173 He NF CORR 803 He NF CORR 803 25.1.201/AMH/1533 He NF CORR 1300/DC 25.1.201/AMH/2450 25.1.201/AMH/2524	TBA	0	M	1	0	1,145	0	1,145	0	1,230	0	85	0	0	0	0	0	0	1,230	0	10	0



ETN INFRACO NOTIFICATION OF THE CHANGE (INTC)
CONFIDENTIAL

Withdrawn/Superseding cost
Delay Only

Ref.	The Change Order Ref.	Description	Date Notified	Date of further letters	Letter Ref	Agreed in Principle?	Estimate Issued? (Y/N/0=)	Compensation Event	Type	Change Type	Pricing Method	Value Estimate (GBP)								Change Order Value (GBP)									
												Siemens	Bilfinger	Siemens	CAF	Subtotal	Other Prolims	Consentium Prolims	Other Prolims		Total	£ Agreed	£ Not Agreed	Allocation of Cost	Section				
													Location																
													E Agreed		E Not Agreed		Number		See Notes										
119		TFC Driveway Change Leith Walk Sub Station	14/07/2008	23/09/08 22/10/08 27/10/08 28/10/08 31/10/08 21/11/08 25/11/08 09/12/08 12/12/08 16/12/08 20/01/09 26/01/09 25/02/08 02/05/09	25.1.201/AMH/357 the INF CORR 258 the INF CORR 259 25.1.201/AMH/773 25.1.201/AMH/778 the INF CORR 318 25.1.201/AMH/636 25.1.201/AMH/637 the INF CORR 459 25.1.201/AMH/1162 25.1.201/AMH/1173 the INF CORR 575 25.1.201/AL/1954 the INF CORR 779 25.1.201/AL/1958	TBA	0		M			0	0	0	0	0	0	0	0	N/A			0						
120		TFC Driveway, demolition and reinforcing of existing building for Leith Walk Sub Station and existing building positioned in area of building to be demolished	14/07/2008	23/09/08 22/10/08 27/10/08 28/10/08 31/10/08 04/11/08 25/11/08 09/12/08 12/12/08 16/12/08 20/01/09 26/01/09 25/02/08 02/05/09	the INF CORR 258 the INF CORR 259 25.1.201/AMH/773 25.1.201/AMH/778 the INF CORR 318 25.1.201/AMH/636 25.1.201/AMH/637 the INF CORR 459 25.1.201/AMH/1162 25.1.201/AMH/1173 the INF CORR 575 25.1.201/AL/1954 the INF CORR 779 25.1.201/AL/1958	TBA	N/A		M			0	0	0	0	0	0	0	0	0	N/A			0					
121	16	Urban Traffic Controls (UTC) associated with delivery of the agreement	17/09/2008	13/10/08 23/09/08 27/10/08 06/11/08 14/11/08 21/11/08 25/11/08 07/01/09 09/04/09 21/04/09 21/04/09	the INF CORR 258 the INF CORR 259 25.1.201/AMH/773 25.1.201/AMH/778 the INF CORR 318 25.1.201/AMH/636 25.1.201/AMH/637 the INF CORR 459 25.1.201/AMH/1162 25.1.201/AMH/1173 the INF CORR 575 25.1.201/AL/1954 the INF CORR 779 25.1.201/AL/1958	Y	0	M			4	0	0	0	0	0	0	0	0	0	0	0	10	DPS	1A	0			
122		Delay in receipt of CEC prior approval Sections 1A1 & 1A2	31/07/2008	25/07/08 23/09/08 16/09/08 02/10/08 17/11/08 16/12/08	BBSC 25.1.201/AMH/327 the INF CORR 137 25.1.201/AMH/696 25.1.201/AMH/1161	N/A	N/A					0	0	0	0	0	0	0	0	0	0	0	0	N/A		0			
123		Fourth Party Agreement and Design Completion	16/09/2008	06/10/08 13/10/08 23/09/08 16/10/08 23/09/08 27/10/08 06/11/08 10/11/08 12/11/08 14/11/08 17/11/08 19/11/08 20/11/08 20/11/08 21/11/08 25/11/08 27/11/08 03/12/08 04/12/08 17/12/08 18/12/08 07/01/09 14/01/09 13/01/09	the INF CORR 154 the INF CORR 244 SDSULE0130-01-LET-00818 the INF CORR 258 25.1.201/AMH/773 the INF CORR 338 the INF CORR 339 25.1.201/AMH/693 SDSULE0130-01-LET-00864 the INF CORR 368 25.1.201/AMH/693 the INF CORR 969 the INF CORR 367 the INF CORR 432 25.1.201/AMH/693 SDSULE0130-01-LET-00886 the INF CORR 537 25.1.201/AMH/1209 SDSULE0130-SW-LET-01530 the INF CORR 559	Y	1	I		4	1,2,3,4	47,566	47,566	47,566	0	0	0	0	0	0	0	0	0	0	0	0	0	0	0
124		Requirement for Principal Contractor's License for Network Rail Related Works	10/10/2008	23/09/08 27/10/08 14/11/08 21/11/08 12/02/09 12/02/09 09/04/09 21/04/09 23/04/09	the INF CORR 258 the INF CORR 259 25.1.201/AMH/773 25.1.201/AMH/693 25.1.201/AMH/693 the INF CORR 1204MP 25.1.201/AMH/2360	N	0	I			4	0	842,771	842,771	842,771	0	0	0	0	0	0	0	0	0	0	N/A		0	
125		Unbroken Ground Conditions at Haymarket Viaduct	10/10/2008	13/11/08 08/01/09 25/01/09 10/02/09 23/02/09 06/03/09 23/03/09 30/04/09 12/06/09 12/06/09 16/06/09	the INF CORR 354 25.1.201/AMH/255 SDSULE0130-SW-LET-01379 25.1.201/AMH/699 the INF CORR 903 25.1.201/AMH/2037 the INF CORR 1599/TC the INF CORR 1649RE the INF CORR 1649CC 25.1.201/AMH/2855	Y	0	M					0	0	0	0	0	0	0	0	0	0	0	0	0	N/A		0	
126		Revised design for GLE poles in Section 1B	02/10/2008	19/09/08 30/01/09 06/05/09 12/05/09	ULLE0130-LET-00810 (SDS) 25.1.201/AMH/1431 SDSULE0130-SW-LET-01543 25.1.201/AMH/2801	N/A	N/A		0		4	0	0	0	0	0	0	0	0	0	0	0	0	0	N/A		0		

ETN INFRACO NOTIFICATION of the CHANGE (INTC)

CONFIDENTIAL



Ref.	The Change Order Title	Description	Date Notified	Date of further letters	Letter Ref	Agreed in Principle?	Estimate Issued? (Y/N/0=N)	Compensation Event	Type	Change Type	Rifling Method	Value Estimate (€/M)										Allocation of Cost	Change Order Value (€/M)				
												SIEMENS	BILFINGER	SIEMENS	C&A	SIEMENS	Other	Other	Other	Other	Other			Other	Other	Other	Other
121		SW Package for Prior Approvals Ocean Terminal to Port of Leith.	03/10/2008	22/09/08																							
122		CEC requestor change to roas design at Edinburgh Park Station Interchange	05/10/2008	21/10/08		N/A	N/A		M																		
123		CEC's Request for Extension of Time for Prior Approvals 1A1a, 1A1b and 1A1c	06/10/2008	10/10/08		N/A	N/A																				
124		Delay to issue of IFC Drawings for Ingleton Park and Ride Tram Stop	06/10/2008	20/08/08		N/A	N/A																				
125		Delay to Section 1B details MUDPA not having completed its works	08/10/2008	23/09/08																							
126		Section 1C - Picardy Place - Modifications to designs, additional design work outside LOD and additional works to pavements in front of the Playhouse.	08/10/2008	01/10/08		N/A	N/A																				
127		Sections 1A1 and 1A2 - CEC's proposed amendments to tree built-outs adjacent 4 Constitution Street	08/10/08	26/09/08																							
128		Design the piled foundations to the Water of Leith Bridge in sewer	05/08/2008	10/11/08																							



ETN INFRACO NOTIFICATION of tie CHANGE (INTC)
CONFIDENTIAL

Withdrawn/Suspended/Not Issued
Delay Only
Often e-Order Issued

Ref. Tie	Tie Change Order TOD	Description	Date Notified	Date of further letters	Letter Ref	Agreed in Principle?	Estimate Issued? 1=Y, 0=N	Compensation Event	Type	Change Type	Pricing Method	Value Estimate (GBP)								Allocation of Cost		Section	Change Order Value (BSQ)				
												£ Submitted (Euros) (CAF)								£ Agreed	£ Not Agreed			P sum or VE	Number		
												SDS	Bilfinger	Siemens	CAF	Sub-total	H & P	Consortium Prelims	Other Prelims	Total							
138		Revised location of OLE poles in Section 1A at the request of CEC.	09/10/2008	06/10/08 23/09/08 27/10/08 31/10/08 13/11/08 14/11/08 18/11/08 21/11/08 21/11/08 16/12/08 10/02/09 12/02/09 29/02/09 05/03/09 10/03/09 17/03/09 17/03/09 18/03/09 27/03/09 09/04/09 21/04/09 22/05/09 26/05/09		SDS-ULE90130-01-LET-00828 25.1.201/MRH/645 tie INF CORR 258 25.1.201/MRH/773 25.1.201/JH/619 tie INF CORR 382 tie INF CORR 389 SDS-ULE90130-01-LET-00867 25.1.201/MRH/893 25.1.201/JH/556 25.1.201/JH/1161 SDS-ULE90130-SW-LET-01379 25.1.201/JH/1584 tie INF CORR 294 25.1.201/MRH/1799 SDS-ULE90130-LET-00962 25.1.201/JH/1947 25.1.201/JH/1948 tie INF CORR 1048 25.1.201/JH/2114 tie INF CORR 1204/MRP 25.1.201/MRH/2350 tie INF CORR 1489/RD 25.1.201/MRH/2724	N	I		M	I	1,23,4	6,876	0	0	0	6,876	0	509	0	8,072	0	8,072	N/A		15	0
140		Delay in issue of IFO drawings for Part of Leith Train Stop Beyond Street Tram Stop. Focus of the Work Train Stop. 1A1 Road, Street Lighting, Landscape and Drainage 1A2 Road, Street Lighting, Landscape and Drainage West End Tram stop - revised requirements from CEC/ia.	09/10/2008	25/09/08 26/09/08	SDS-ULE90130-01-LET-00878 SDS-ULE90130-01-LET-00814 25.1.201/MRH/647	N/A	N/A												0	0	N/A		1A	0			
141	24		31/10/2008	28/10/08 30/10/08 04/11/08 06/11/08 13/11/08 17/11/08 19/11/08 20/11/08 11/12/08 11/12/08 17/12/08 18/12/08 07/01/09 08/03/09 09/04/09 20/04/09 20/04/09 08/05/09		SDS-ULE90130-01-LET-00848 25.1.201/JH/1161 SDS-ULE90130-SW-LET-01257 SDS-ULE90130-LET-00858 25.1.201/MRH/345 25.1.201/MRH/803 25.1.201/JH/935 SDS-ULE90130-SW-LET-01278 tie INF CORR 451 25.1.201/MRH/1127 25.1.201/MRH/1128 25.1.201/JH/1198 tie INF CORR 857 25.1.201/MRH/1247 SDS-ULE90130-SW-LET-01330 tie INF CORR 896 tie INF CORR 1220/DS 25.1.201/MRH/2331 25.1.201/JH/2333 tie INF CORR 1401/MRP	Y	I		M	I	8	14,551	0	0	0	14,551	1,455	1,077	0	17,083	16,636	447	N/A		1	18,535
142		Christmas and Festival Suspensions - top lift information	10/10/2008	05/11/08	SDS-ULE90130-01-LET-00858 tie INF CORR 896	N/A	N/A												0	0	N/A		A1	0			
143		CEC's intent to add private roads between Lochside Crescent and Lochside Avenue.	13/10/2008	09/10/08 27/10/08 06/11/08 06/11/08 12/11/08 20/11/08 28/11/08 08/05/09 13/05/09		SDS-ULE90130-05-LET-00336 25.1.201/MRH/666 tie INF CORR 256 25.1.201/JH/660 tie INF CORR 336 25.1.201/MRH/804 tie INF CORR 406 25.1.201/MRH/1028 tie INF CORR 1417/DS 25.1.201/JH/2614	Y	0		M	I	4	0	0	0	0	0	0	0	0	0	0	N/A		5C	0	
144		Land drainage in cuttings (to include area ch 210600 #10600)	07/11/2008	17/11/08 19/11/08 19/11/08 19/11/08 19/11/08 19/11/08		SDS-ULE90130-01-LET-00872 tie INF CORR 387 25.1.201/MRH/671 tie INF CORR 521 25.1.201/JH/1288 tie INF CORR 701 25.1.201/MRH/1627	N/A	N/A											0	0	N/A		7	0			
145		Additional work arising from CEC's additional comments on Section 5C Technical Approval.	13/10/2008	09/10/08 23/09/08 27/10/08 27/10/08 06/11/08 06/11/08 14/11/08 21/11/08 16/12/08 30/01/09 27/02/09 18/03/09 23/03/09 09/04/09 21/04/09		SDS-ULE90130-LET-00335 25.1.201/MRH/663 tie INF CORR 259 25.1.201/MRH/779 tie INF CORR 269 25.1.201/JH/666 tie INF CORR 342 tie INF CORR 388 25.1.201/MRH/893 25.1.201/JH/1181 25.1.201/JH/1434 SDS-ULE90130-05-LET-00380 SDS-ULE90130-SW-LET-01466 25.1.201/JH/2044 tie INF CORR 1204/MRP 25.1.201/MRH/2350	N	I		M	I	4	15,542	0	0	0	15,542	1,554	1,150	0	18,246	0	18,245	N/A		5C	0

CEC00624371_0154



ETN INFRACO NOTIFICATION of tie CHANGE (INTC)
CONFIDENTIAL

Withdrawn/Superseded/no call
@ relay (0)

Client Order/ISS

Ref. Tie	Tie Change Order TCD	Description	Date Notified	Date of further letters	Letter Ref	Agreed in Principle?	Estimate Issued? 1=Y, 0=N	Compensation Event	Type	Change Type	Pricing Method	Value Estimate (GBP)							Allocation of Cost		Section	Change Order Value (BSQ)			
												£ Submitted (Euros) (CAF)	£ Agreed	£ Not Agreed	Sum of VET	Number	See Notes	See Notes	See Notes	See Notes			See Notes	See Notes	See Notes
146		IFC Drawing Change Russell Road RTWs 1,2,3 & 4	14/10/2008	23/09/08 22/10/08 27/10/08 28/10/08 31/10/08 04/11/08 21/11/08 09/12/08 12/12/08 16/12/08 20/01/09 23/01/09 26/02/09 10/03/09 12/03/09 16/03/09 19/03/09 02/04/09 09/04/09 14/04/09 14/05/09 16/05/09 22/05/09 27/05/09 05/06/09 19/06/09	25.1.201/MR/682 file INF CORR 258 file INF CORR 258 25.1.201/MRH/773 25.1.201/MRH/776 file INF CORR 318 25.1.201/MRH/695 25.1.201/MRH/693 file INF CORR 459 25.1.201/MRH/1162 25.1.201/MRH/1173 file INF CORR 575 25.1.201/IL1356 25.1.201/RS/1352 file INF CORR 621 file INF CORR 688 file INF CORR 1032 25.1.201/MRH/2022 25.1.201/KDR/2102 file INF CORR 1217/TC file INF CORR 1235/TC 25.1.201/MRH/2625 25.1.201/KDR/2655 file INF CORR 1493/TC 25.1.201/MRH/2738 file INF CORR 1608 25.1.201/KDR/2830	Y (Part)	1		M	I	1,2,3	0	3,233,043	0	0	3,233,043	126,549	239,245	565,782	4,154,619	991,240	3,173,379	N/A	5A	0
147		IFC Drawings Change Murrayfield Training Pitches Retaining Wall	14/10/2008	23/09/08 27/10/08 06/11/08 10/11/08 14/11/08 21/11/08 09/12/08 21/12/08	25.1.201/MR/683 file INF CORR 258 25.1.201/MRH/773 file INF CORR 345 25.1.201/MRH/689 file INF CORR 368 25.1.201/MRH/693 file INF CORR 1204/MP 25.1.201/MRH/2350	TBA	0		M	I	1,2,3	0	0	0	0	0	0	0	0	0	0	N/A	5A	0	
148		IFC Drawing Change Dalgreen Road Underbridge (S27)	16/10/2008	23/09/08 22/10/08 27/10/08 28/10/08 31/10/08 04/11/08 21/11/08	25.1.201/MR/697 file INF CORR 258 file INF CORR 259 25.1.201/MRH/773 25.1.201/MRH/776 file INF CORR 318 25.1.201/MRH/336 25.1.201/MRH/593	TBA	0		M	I	1,2,3	0	0	0	0	0	0	0	0	0	0	N/A	5A	0	
149		Removal and deposition of material from previous works section 7 per sketch	16/10/2008	04/11/08 29/10/09	25.1.201/MR/698 file INF CORR 324 25.1.201/ID/2268	N	1		M	I	4	0	82,522	0	0	82,522	0	6,187	14,441	103,069	0	103,069	N/A	7	0
150		IFC Drawing Changes S21 Rosaburn Street Wallcut	31/10/2008	05/11/08 10/11/08 17/11/08 03/12/08 12/12/08	25.1.201/MR/699 file INF CORR 326 25.1.201/MR/695 file INF CORR 401 25.1.201/MR/671/053 file INF CORR 455	N/A	N/A		M			0	0	0	0	0	0	0	0	0	0	N/A	5A	0	
151	17	Excavate and replace existing material within existing utility trenches.	13/10/2008	20/10/08 27/10/08 29/10/08 30/10/08 30/10/08 26/11/08 01/12/08 12/12/08 16/12/08 16/12/08 18/12/08 07/01/09 20/01/09 26/01/09 29/01/09 04/02/09 05/02/09 06/03/09 24/03/09 19/05/09 13/05/09	file INF CORR 216 25.1.201/IL/728 file INF CORR 270 25.1.201/IL/729 E-mail to BSC file INF CORR 302 25.1.201/IL/1017 25.1.201/MRH/1048 file INF CORR 493 25.1.201/MRH/1178 file INF CORR 538 file INF CORR 537 25.1.201/MRH/1247 file INF CORR 615 25.1.201/MRH/1398 file INF CORR 658 25.1.201/MRH/1478 25.1.201/IL/1485 file INF CORR 930 25.1.201/MRH/2061 file INF CORR 1397/MP 25.1.201/MRH/2815	Y	1		I	I	1	0	44,136	0	0	44,136	0	3,270	77,39	55,189	20,246	34,978	N/A	1B	0
152		IFC Drawing changes Vertical and horizontal Alignment Section 5 - Sheet s 1 to 26	16/10/2008	23/09/08 22/10/08 27/10/08 28/10/08 31/10/08 04/11/08 05/11/08 10/11/08 09/12/08 12/12/08 16/12/08 20/12/08 04/02/09 06/03/09 11/03/09 18/03/09 18/03/09	25.1.201/G/700 file INF CORR 258 file INF CORR 259 25.1.201/MRH/773 25.1.201/MRH/776 file INF CORR 318 25.1.201/MRH/336 file INF CORR 330 25.1.201/MRH/697 file INF CORR 459 25.1.201/MRH/1162 25.1.201/MRH/1173 file INF CORR 575 25.1.201/IL/1357 file INF CORR 687 file INF CORR 666 25.1.201/MRH/994 25.1.201/MRH/1990	TBA	0		M	I	1,2,3	0	0	0	0	0	0	0	0	0	0	0	N/A	5A,5B,5C	0
153		IFC Drawing changes Soft Landscaping Section 5 sheets 1 to 26	16/10/2008	23/09/08 22/10/08 27/10/08 28/10/08 31/10/08 04/11/08 09/12/08 12/12/08 16/12/08 20/12/08 26/01/09 16/04/09 23/04/09	25.1.201/MR/701 file INF CORR 258 file INF CORR 258 25.1.201/MRH/773 25.1.201/MRH/776 file INF CORR 318 25.1.201/MRH/697 file INF CORR 459 25.1.201/MRH/1162 25.1.201/MRH/1173 file INF CORR 575 25.1.201/IL/1358 file INF CORR 1265/DC 25.1.201/MRH/2374	TBA	0		M	I	1,2,3	0	0	0	0	0	0	0	0	0	0	0	N/A	5A,5B,5C	0

CEC00624371_0155

ETN INFRACO NOTIFICATION OF THE CHANGE (INTC)

CONFIDENTIAL



Ref. No.	The Change Order Ref.	Description	Date Notified	Date of further letters	Letter Ref	Agreed in Principle?	Estimate Issued? (Y/N/0=N)	Compensation Event	Type	Change Type	Rifling Method	Site Notes	Value Estimate (GBP)								Allocation of Cost	Section	Change Order Value (GBP)						
													See Notes		See Notes		See Notes		See Notes					See Notes		E. Agreed	E. Not Agreed	Number	See Notes
													See Notes	See Notes	See Notes	See Notes	See Notes	See Notes	See Notes	See Notes				See Notes	See Notes				
154		IFC Drawing changes: QLE Section 5 sheets 1 to 13	16/10/2008	23/09/08 22/10/08 27/10/08 28/10/08 31/10/08 04/11/08 05/11/08 12/12/08 13/12/08 16/12/08 20/01/09 28/01/09	25.1.2010/07/03 He INF CORR 258 He INF CORR 259 25.1.2010/ARH/773 25.1.2010/ARH/778 He INF CORR 318 25.1.2010/ARH/459 He INF CORR 459 25.1.2010/ARH/182 25.1.2010/ARH/173 He INF CORR 575 25.1.2010/AL/199 He INF CORR 258 25.1.2010/ARH/773 25.1.2010/ARH/778 He INF CORR 318 25.1.2010/ARH/636 He INF CORR 459 25.1.2010/ARH/192 25.1.2010/ARH/173 He INF CORR 575 25.1.2010/AL/190 25.1.2010/AL/280 25.1.2010/AL/280	TBA	0	M	1	1,2,3	0	0	0	0	0	0	0	0	N/A	5A/5B/5C	0								
155		IFC Drawing changes Megaform RTVs 15A,15C, 14D	16/10/2008	23/09/08 23/10/08 27/10/08 29/10/08 31/10/08 04/11/08 09/12/08 12/12/08 13/12/08 16/12/08 20/01/09 28/01/09	25.1.2010/07/03 He INF CORR 258 25.1.2010/ARH/773 25.1.2010/ARH/778 He INF CORR 318 25.1.2010/ARH/636 He INF CORR 459 25.1.2010/ARH/192 25.1.2010/ARH/173 He INF CORR 575 25.1.2010/AL/190 25.1.2010/AL/280	TBA	1	M	1	1,2,3	0	919,090	0	919,090	0	0	0	0	0	N/A	7	0							
156		IFC Drawing changes Tramstops Balgownie Edinburgh Park Saughton and South Gyle	16/10/2008	23/09/08 22/10/08 27/10/08 28/10/08 04/11/08 09/12/08 12/12/08 16/12/08 20/01/09 28/01/09 03/02/09 13/05/09	25.1.2010/07/04 He INF CORR 258 He INF CORR 259 25.1.2010/ARH/773 25.1.2010/ARH/778 25.1.2010/ARH/636 He INF CORR 459 25.1.2010/ARH/162 25.1.2010/ARH/173 He INF CORR 575 25.1.2010/AL/190 25.1.2010/AL/280	TBA	0	M	1	1,2,3	0	0	0	0	0	0	0	0	N/A	5B	0								
157	50	Survey of Existing Drainage (Regular Landfill)	10/10/2008	15/10/08 29/10/08 07/04/09 01/05/09	He INF CORR 218 He INF CORR 693 He INF CORR 294 25.1.2010/AL/2187 He INF CORR 199/02B	Y	1	I	1	4	4	3756	0	3756	0	3,463	607	4,070	N/A	5	3,463								
158	18	Provisional Sum - Provide Crew Relief Facilities at Haymarket Station Via duct. Undefined Provisional Sum	10/10/2008	15/10/08 23/09/08 27/10/08 28/10/08 28/10/08 19/11/08 21/11/08 12/12/08 18/12/08 18/12/08 07/01/09 08/01/09 12/03/09 19/03/09 09/04/09 21/04/09	He INF CORR 258 25.1.2010/ARH/773 25.1.2010/AL/783 25.1.2010/AL/784 25.1.2010/AL/785 25.1.2010/AL/972 25.1.2010/ARH/693 He INF CORR 504 He INF CORR 537 25.1.2010/AL/205 25.1.2010/ARH/1247 He INF CORR 957 He INF CORR 1204/MP He INF CORR 1204/MP	Y	1	D	1	4	0	112,010	0	112,010	0	0	0	0	0	N/A	5	0							
159	19	Provisional Sum - Relocation of Ancient Monuments	14/10/2008	15/10/08 15/10/08 20/10/08 20/10/08 20/10/08 20/10/08 20/10/08 20/10/08 23/09/08 23/10/08 27/10/08 28/10/08 06/11/08 10/11/08 14/11/08 17/11/08 20/11/08 20/11/08 26/11/08 01/12/08 09/12/08 13/12/08 17/12/08 18/12/08	He INF CORR 222 He INF CORR 227 He INF CORR 237 25.1.2010/AL/709 25.1.2010/AL/710 25.1.2010/AL/711 25.1.2010/AL/712 25.1.2010/AL/713 25.1.2010/AL/714 25.1.2010/AL/715 He INF CORR 258 He INF CORR 255 25.1.2010/ARH/773 He INF CORR 259 He INF CORR 260 He INF CORR 346 25.1.2010/ARH/688 SDS-JULE9130-01-LET-0066 He INF CORR 388 25.1.2010/AL/950 He INF CORR 415 He INF CORR 420 He INF CORR 421 25.1.2010/ARH/1043 He INF CORR 482 25.1.2010/AL/155 He INF CORR 539 He INF CORR 537 25.1.2010/AL/105	Y	1	D	1	4	0	3718	0	3718	0	0	0	0	0	0	DPS	All	3,993						

ETN INFRACO NOTIFICATION OF THE CHANGE (INTC)
CONFIDENTIAL



Ref	The Change Order Title	Description	Date Notified	Date of further letters	Letter Ref	Agreed in Principle?	Estimate Issued? (Y/N/0=N)	Compensation Event	Type	Change Type	Pricing Method	Value Estimate (€)						Allocation of Cost	Change Order Value (€)				
												Siemens	Bilfinger	Other Prolims	Consortium Prolims	Other Prolims	Total			£ Agreed	£ Not Agreed	Form of V/E	Number
151	T&E Drawing changes - Edinburgh Park Bridge		16/10/2008	22/10/08 29/10/08 31/10/08 04/11/08 09/12/08 12/12/08 15/12/08 20/01/09 29/01/09 06/03/09 07/05/09 14/05/09	25.1.201/AMH/778 25.1.201/AMH/778 25.1.201/AMH/778 25.1.201/AMH/778 25.1.201/AMH/778 25.1.201/AMH/778 25.1.201/AMH/778 25.1.201/AMH/778 25.1.201/AMH/778 25.1.201/AMH/778 25.1.201/AMH/778 25.1.201/AMH/778	TBA	1	M	1	1,2,3	0	229,710	0	39,605	286,063	0	0	N/A	0	0	5B		
152	ETN Management, Temporary Traffic Signals Bus Tracker, TFS and Radio		16/10/2008	17/10/08 23/09/08 27/10/08 12/11/08 19/11/08 21/11/08 18/12/08 07/01/09 09/04/09 21/04/09 07/05/09	25.1.201/AMH/706 25.1.201/AMH/706 25.1.201/AMH/773 ETMS/ST/EM/AB/00102 25.1.201/AMH/706 25.1.201/AMH/706 25.1.201/AMH/706 25.1.201/AMH/706 25.1.201/AMH/706 25.1.201/AMH/706 25.1.201/AMH/706	Y	1	I	1	4	0	1,410,000	0	0	1,410,000	0	1,410,000	N/A	0	0	All		
153	Raymarket Taxi Stand		24/09/2008	29/10/08 07/11/08 18/11/08 18/12/08 07/01/09 10/02/09 13/02/09 27/02/09 05/03/09 27/03/09 04/04/09 07/04/09 15/05/09	SDS/ULE90130-01-LET-00751 25.1.201/AMH/292 25.1.201/AMH/676 SDS/ULE90130-01-LET-00871 25.1.201/AMH/1247 SDS/ULE90130-01-LET-01587 SDS/ULE90130-01-LET-01579 25.1.201/AMH/572 25.1.201/AMH/794 25.1.201/AMH/1799 INF CORR 1043 25.1.201/AMH/2164 25.1.201/AMH/2164 25.1.201/AMH/2164 25.1.201/AMH/2164	Y	1	I	1	4	22,710	0	0	22,710	2,271	0	25,662	0	25,662	N/A	0	2	
154	Deliver, Update, Building Consent Applications		29/07/2008	01/06/08 01/07/08 22/06/08 28/06/08 28/11/08 16/12/08 11/03/09	SDS/ULE90130-01-LET-00651 25.1.201/AMH/640 SDS/ULE90130-01-LET-00749 25.1.201/AMH/295 25.1.201/AMH/295 25.1.201/AMH/295 25.1.201/AMH/181 25.1.201/AMH/181	N/A	N/A					0	0	0	0	0	0	0	0	1			
155	Car park layout works for Section T44		17/10/08	23/09/08 27/10/08 14/11/08 14/11/08 21/11/08 28/11/08 16/12/08 09/04/09	25.1.201/AMH/707 25.1.201/AMH/707 25.1.201/AMH/707 25.1.201/AMH/707 25.1.201/AMH/707 25.1.201/AMH/707 25.1.201/AMH/707 25.1.201/AMH/707	N/A	N/A					0	0	0	0	0	0	0	0	0	1A4		
156	Benluepark existing garage and fuel tanks on Oseau Drive		20/10/2008	23/09/08 27/10/08 29/10/08 14/11/08 17/11/08 25/11/08 03/12/08 09/01/09 09/04/09	25.1.201/AMH/708 25.1.201/AMH/773 25.1.201/AMH/773 25.1.201/AMH/773 25.1.201/AMH/773 25.1.201/AMH/773 25.1.201/AMH/773 25.1.201/AMH/773 25.1.201/AMH/773	Y	1	I	1	4	0	14,500	0	0	14,500	1,450	0	2,538	17,023	2,538	1A		
157	Accommodation Works to Waverley Clubhouse Building at Murrayfield		20/10/2008	02/07/08 23/09/08 27/10/08 07/11/08 06/11/08 11/11/08 14/11/08 17/11/08 21/11/08 03/12/08 09/12/08 20/01/09 20/01/09 29/01/09 05/02/09 05/02/09 12/03/09 12/03/09 12/03/09 12/03/09 12/03/09 10/04/09 21/04/09 07/05/09 26/05/09	25.1.201/AMH/716 25.1.201/AMH/206 25.1.201/AMH/295 25.1.201/AMH/295 25.1.201/AMH/676 25.1.201/AMH/334 25.1.201/AMH/681 25.1.201/AMH/681 SDS/ULE90130-05-LET-00556 25.1.201/AMH/991 25.1.201/AMH/991 25.1.201/AMH/991 25.1.201/AMH/112 25.1.201/AMH/1305 25.1.201/AMH/1310 25.1.201/AMH/650 25.1.201/AMH/488 25.1.201/AMH/488 25.1.201/AMH/488 25.1.201/AMH/1515 25.1.201/AMH/1515 25.1.201/AMH/1515 25.1.201/AMH/1515 25.1.201/AMH/1515 25.1.201/AMH/1515 25.1.201/AMH/2360 25.1.201/AMH/2360 25.1.201/AMH/2360	Y	1	I	4	141,631	0	0	141,631	44,163	10,441	191,061	186,275	24,786	24,786	0	166,275	5A	



ETN INFRACO NOTIFICATION of the CHANGE (INTC)
CONFIDENTIAL

Withdrawn/Superseded/Cancelled
Delay Only
Often e-Order Issued

Ref. No.	Change Order ID	Description	Date Notified	Date of further letters	Letter Ref	Agreed in Principle?	Estimate Issued? 1=Y, 0=N	Compensation Event	Type	Change Type	Pricing Method	Value Estimate (€000)										Allocation of Cost		Section	Change Order Value (€000)		
												£ Submitted (Euros) (CAF)										£ Agreed	£ Not Agreed			Psum or VE	Number
												SDS	Bilfinger	Siemens	CAF	Sub-total	H & P	Consortium Prelims	Other Prelims	Total							
168	16	Demolition of existing building 433 Ocean Drive	20/10/2008	23/09/08 27/10/08 28/10/08 14/11/08 21/11/08 25/11/08 17/12/08 18/12/08 09/01/09 07/01/09 02/03/09 09/04/09	25.1.201/MRH/712 lie INF CORR 258 25.1.201/MRH/723 lie INF CORR 285 lie INF CORR 388 25.1.201/MRH/893 25.1.201/MRH/1015 lie INF CORR 512 lie INF CORR 537 25.1.201/MRH/1218 25.1.201/MRH/1247 lie INF CORR 785 lie INF CORR 1204/MP	Y	1		I	I	1,2,3	0	5,000	0	0	0	5,000	600	378	875	6,745	6,668	887	N/A	5	5,956	
169	44	Relocation of Pallets Bar/Coffee Bar - Picardy Place	20/10/2008	23/09/08 27/10/08 29/10/08 14/11/08 20/11/08 21/11/08 17/12/08 18/12/08 07/01/09 16/02/09 09/03/09 09/04/09 21/04/09 29/04/09	25.1.201/MRH/718 lie INF CORR 258 25.1.201/MRH/723 lie INF CORR 291 lie INF CORR 388 25.1.201/MRH/874 25.1.201/MRH/893 lie INF CORR 534 lie INF CORR 537 25.1.201/MRH/1242 25.1.201/MRH/1503 lie INF CORR 1079 lie INF CORR 1204/MP 25.1.201/MRH/2360 SDS-ULE90130-DI-LET-0099 lie INF CORR 1349/MP	Y	1		I	I	1,2,3	0	7,889	0	0	7,889	787	335	1,312	10,315	9,329	1,287	N/A	10	9,329		
170	92	Demolition and alteration of existing building at Cathedral Lane	20/10/2008	23/09/08 27/10/08 29/10/08 11/11/08 14/11/08 21/11/08 12/12/08 18/12/08 19/01/09 09/04/09 21/04/09 29/05/09	25.1.201/MRH/718 lie INF CORR 258 25.1.201/MRH/723 lie INF CORR 285 25.1.201/MRH/892 lie INF CORR 388 25.1.201/MRH/893 lie INF CORR 518 25.1.201/MRH/1201 lie INF CORR 571 lie INF CORR 1204/MP 25.1.201/MRH/2360 25.1.201/MRH/2369	Y	1		I	I	1,2,3	0	2,244	0	0	2,244	0	156	393	2,802	0	2,802	N/A	1A	0		
171	98	Contract with Fager Munnell for Transit and Linx Modelling Assessments	15/10/2008	07/11/08 12/02/08 09/02/09 16/08/09	25.1.201/MRH/718 lie INF CORR 555 25.1.201/MRH/1264 lie INF CORR 1662/2008	Y	1		I	I	4	0	22,277	0	0	22,277	2,228	1,645	3,998	30,552	64,809	34,757	N/A	All	64,809		
172	23	Traffic Modelling - Pedestrian Crossing Timing Standard	08/09/2008	14/10/08 15/10/08 16/10/08 20/10/08 22/10/08 23/10/08 30/10/08 06/11/08 08/11/08 21/11/08 11/12/08 15/12/08 18/12/08 07/01/09 20/01/09 04/02/09 05/02/09 09/02/09 20/02/09 24/02/09 27/02/09 05/03/09 02/04/09 07/04/09 08/04/09	25.1.201/SR/456 SDS-ULE90130-SW-LET-01238 lie INF CORR 239 lie INF CORR 245 25.1.201/MRH/729 25.1.201/MRH/742 25.1.201/MRH/762 lie INF CORR 304 25.1.201/MRH/899 lie INF CORR 323 SDS-ULE90130-SW-LET-01287 25.1.201/MRH/892 SDS-ULE90130-SW-LET-01323 25.1.201/MRH/1169 lie INF CORR 537 25.1.201/MRH/1247 lie INF CORR 630 SDS-ULE90130-SW-LET-01359 25.1.201/MRH/1480 25.1.201/MRH/1527 SDS-ULE90130-SW-LET-01399 25.1.201/MRH/1722 lie INF CORR 794 25.1.201/MRH/1799 lie INF CORR 1189 25.1.201/MRH/2188 25.1.201/MRH/2204	Y	1		I	I	4	36,874	0	0	0	36,874	3,687	2,729	0	43,290	0	43,290	N/A	All	0		
173	26	Discovery of underground petrol tank at National Car Rental Site	22/10/2008	30/10/08 04/11/08 09/12/08 09/12/08 12/12/08 18/12/08 21/01/09 11/02/09 12/02/09 23/02/09 06/03/09 27/03/09 07/04/09 07/04/09 09/05/09 14/05/09	25.1.201/MRH/204 lie INF CORR 300 25.1.201/MRH/835 lie INF CORR 458 25.1.201/MRH/1108 lie INF CORR 539 25.1.201/MRH/1166 25.1.201/MRH/1920 lie INF CORR 771 lie INF CORR 736 25.1.201/MRH/1698 25.1.201/MRH/1880 lie INF CORR 1112 25.1.201/MRH/2196 lie INF CORR 1122 lie INF CORR 1421/MP 25.1.201/MRH/2520	Y	1		I	I	4	0	4,108	0	0	4,108	381	383	718	5,581	4,813	718	N/A	6	4,813		

CEC00624371_0158