



ETN INFRACO NOTIFICATION of tie CHANGE (INTC)
CONFIDENTIAL

Withdrawn/Suspended/Not
Delayed Only
On the Order Issued

Ref	Tie	Change Order TOID	Description	Date Notified	Date of further letters	Letter Ref	Agreed in Principle?	Estimate Issued? 1=Y, 0=N	Compensation Event	Type	Change Type	Pricing Method	Value Estimate (GBP)										Allocation of Cost		Section	Change Order Value (BSO)		
													£ Submitted (Euros) (CAF)										£ Agreed	£ Not Agreed			Psum or VE	Number
													SDS	Bilfinger	Siemens	CAF	Sub-total	H & P	Consortium Prelims	Other Prelims	Total							
174			Discovery of new BT ducts under kerb line in Section 10	22/10/2008	27/10/08 29/10/08 30/10/08 06/11/08 01/12/08 16/12/08 05/01/09 20/01/09 26/01/09 12/02/09 20/02/09 06/03/09 10/03/09 27/03/09 07/04/09 16/04/09 08/05/09 18/05/09	25.1.201/MRH/741 tie INF CORR 272 25.1.201/MRH/792 tie INF CORR 303 tie INF CORR 348 25.1.201/MRH/1069 tie INF CORR 406 25.1.201/MRH/1233 tie INF CORR 518 25.1.201/MRH/1393 tie INF CORR 795 25.1.201/MRH/1692 tie INF CORR 928 25.1.201/MRH/1937 tie INF CORR 1117 25.1.201/MRH/2195 email SK/MRH tie INF CORR 1411/MP 25.1.201/MRH/2661	Y	1		M	I	4	0	0	0	0	0	0	0	0	0	0	0	VPS	2	10	0	
175			SDS Provisional Simple Battered Construction Support and Design Support Team	22/10/2008	16/10/08 27/10/08 30/10/08 17/11/08 30/10/08 06/11/08 20/11/08 29/11/08 03/12/08 16/12/08	25.1.201/FSR/626 25.1.201/MRH/743 tie INF CORR 253 25.1.201/CH/403 tie INF CORR 318 ULE9130-SW-LET-01250 25.1.201/JH/062 25.1.201/JH/062 25.1.201/JH/062 25.1.201/JH/062 25.1.201/JH/062 25.1.201/JH/062	N/A	N/A					0	0	0	0	0	0	0	0	0	0	N/A		All	0		
176	22	9	CVI - Construction Temporary Reimes (2 no) at Gosker Church Road Bannockburn Car Park	17/10/2008	02/07/08 17/11/08 26/11/08 17/12/08 18/12/08	25.1.201/IM/207 tie INF CORR 430 25.1.201/L/430 25.1.201/L/1070 tie INF CORR 528	Y	1		I	I	4	D	1,185	0	0	0	6,185	0	469	1,083	7,725	6,648	1,077	N/A		5C	6,643
177			Harcour Trackwork Storage Area	30/10/2008	14/11/08 16/12/08 09/01/09 20/01/09 05/03/09 12/03/09 08/05/09	ETN(BSD)TIE=14AOC#050185 tie INF CORR 537 25.1.201/MRH/1247 tie INF CORR 585 ETN(BSD)TIE=14AOC#050456 tie INF CORR 993 tie INF CORR 1435/C0	N	1		I	I	4	0	0	36,060	0	0	36,060	0	0	0	36,060	0	36,060	N/A		1A	0
178			Provisional Simple Mandatory Tie Change Defined in s.2.7.5 & s.2.8 No instruction issued by field trigger date	25/10/08	16/10/08 17/11/08 20/11/08 12/12/08 16/12/08 09/01/09 16/02/09	25.1.201/MRH/546 tie INF CORR 344 25.1.201/MRH/798 tie INF CORR 367 25.1.201/MRH/673 tie INF CORR 508 25.1.201/MRH/705 tie INF CORR 1210/MP 25.1.201/MRH/2303	N/A	N/A		M			0	0	0	0	0	0	0	0	0	0	0	0	0	0	0	0
179	24		Gatehouse Worksite Murrayfield Stadium	16/10/2008	28/10/08 07/11/08 16/12/08 07/01/09 11/02/09 24/02/09 27/02/09 05/03/09 12/03/09 19/03/09 29/04/09 05/05/09 12/05/09 14/05/09 14/05/09	tie INF CORR 246 25.1.201/MRH/776 25.1.201/JH/876 tie INF CORR 537 25.1.201/MRH/847 SDS-ULE90130-SW-LET-00366 25.1.201/MCC/1723 tie INF CORR 796 25.1.201/MCC/1802 25.1.201/MCC/1922 25.1.201/MCC/2024 SDS-ULE90130-SW-LET-00366V2 SDS-ULE90130-SW-LET-01539 tie INF CORR 1454/OC 25.1.201/JH/2636 25.1.201/JH/2631	Y	1		I	I	4	1,2,3	92,669	0	0	0	92,559	9,256	6,849	0	108,664	0	108,664	VPS		5A	0
180			Reduced land available at Murrayfield as a result of Third Party Agreement with SRU	30/10/2008	26/10/08 27/10/08 05/11/08 20/01/09 27/02/09 14/04/09	25.1.201/JH/750 25.1.201/JH/802 SDS-ULE90130-SW-LET-01250 tie INF CORR 329 25.1.201/MCC/1305 tie INF CORR 795 25.1.201/MRH/2651	N	0		M	I	4	0	0	0	0	0	0	0	0	0	0	0	N/A		5A	0	
181			VEC's requirement for a road closure at Roseburn Terrace requires that the Infraco installs a new controlled junction at Roseburn Street/Watfield Road/West Approach Road	28/10/2008	06/11/08 17/06/09 29/06/08 22/09/08 23/10/08	25.1.201/MRH/79 tie INF CORR 347 25.1.201/SGP/012870 tie INF CORR 132 25.1.201/JH/182 SDS-ULE90130-SW-LET-01248 25.1.201/JH/791 tie INF CORR 537 25.1.201/MRH/1247 SDS-ULE90130-SW-LET-01367 25.1.201/JH/1573 tie INF CORR 794 25.1.201/MCC/1799 tie INF CORR 1044 tie INF CORR 1150/DS 25.1.201/MCC/2203 25.1.201/JH/2062	TBA	1		D	I	4	0	135,941	0	0	135,941	7,159	10,060	23,790	178,950	0	176,950	N/A		5A	0	
182			Edinburgh Airport Tramstop Work	29/10/2008	16/12/08 07/01/09 09/02/09 12/02/09 27/02/09 05/03/09 27/03/09 06/04/09 08/04/09 14/04/09	25.1.201/MRH/79 tie INF CORR 347 25.1.201/SGP/012870 tie INF CORR 132 25.1.201/JH/182 SDS-ULE90130-SW-LET-01248 25.1.201/JH/791 tie INF CORR 537 25.1.201/MRH/1247 SDS-ULE90130-SW-LET-01367 25.1.201/JH/1573 tie INF CORR 794 25.1.201/MCC/1799 tie INF CORR 1044 tie INF CORR 1150/DS 25.1.201/MCC/2203 25.1.201/JH/2062	Y	1		M	I	1,2,3,4	11,602	0	0	11,602	1,160	659	0	13,621	0	13,621	N/A		7	0		
183			Leth Walk - temporary white lining	03/11/2008	03/12/08	25.1.201/ISC/24 tie INF CORR 401	N	0		D	I	4	0	0	0	0	0	0	0	0	0	0	0	N/A		10	0	

CEC00624371_0159

ETN INFRACO NOTIFICATION OF THE CHANGE (INTC)
CONFIDENTIAL



Ref	The Change Order Ref	Description	Date Notified	Date of further letters	Letter Ref	Agreed in Principle?	Estimate Issued? (Y/N/0=N)	Compensation Event	Type	Change Type	Pricing Method	Value Estimate (comp)										Location	
												£ CAF	£ Submitted (Excl of CAF)	Sub-total	Other P.	Consentium	Other Prelims	Total	£ Agreed	£ Not Agreed	Allocation of Cost		Section
184	47	Discovery of void around existing BT Duct - Change 350 RHS	13/11/2008	2011.08 01/12/08 12/12/08 18/12/08 18/12/08 18/12/08 26/01/09 26/01/09 12/02/09 20/02/09 24/03/09 31/03/09 04/04/09 22/04/09 29/04/09 08/05/09 12/05/09 14/05/09	25.1.201/AMH/425 he INF CORR 404 25.1.201/AMH/1049 he INF CORR 484 25.1.201/SC/1161 he INF CORR 494 25.1.201/AL/208 he INF CORR 520 25.1.201/AL/207 he INF CORR 521 25.1.201/AL/1384 he INF CORR 732 25.1.201/AMH/1652 he INF CORR 919 25.1.201/AMH/2050 he INF CORR 920 25.1.201/AMH/1901/088 he INF CORR 921 25.1.201/AMH/2366 he INF CORR 1349/MP he INF CORR 1387/CB he INF CORR 1448/PD 25.1.201/AMH/2633	Y	1	M	1	4	0	143	0	143	0	192	167	25	VPS	2	1B	167	
185		Discovery of Gas Main - Change 353 RHS	13/11/2008	2011.08 01/12/08 12/12/08 18/12/08 20/01/09 26/01/09 12/02/09 20/02/09 06/03/09 06/03/09 15/04/09 08/05/09 18/05/09	25.1.201/AMH/505 he INF CORR 404 25.1.201/AMH/1050 he INF CORR 485 he INF CORR 486 he INF CORR 487 he INF CORR 481 25.1.201/SC/W1777 he INF CORR 491 25.1.201/SC/1820 he INF CORR 1026 25.1.201/AMH/2046 he INF CORR 1080 he INF CORR 1081 he INF CORR 1237/AS he INF CORR 1250/AS SQS-JULE90130/SWILET/1512 25.1.201/AMH/2339 he INF CORR 1353/AS 25.1.201/AMH/2639 he INF CORR 967	N/A	N/A	M	1	4	0	0	0	0	0	0	0	N/A	N/A	1C	0		
187	26	Additional encased material at Depot	13/11/2008	27/11/08 05/12/08 06/03/09	25.1.201/SC/6237 he INF CORR 433 25.1.201/SC/1094 he INF CORR 653	Y	1	M	1	1	1	0	1,345,500	0	1,345,500	0	1,650,654	1,425,174	235,480	N/A	6	1,425,174	
188		Contaminated Material at Carrickrowe	04/11/2008	06/03/09 07/05/09 14/05/09 22/05/09 12/06/09	25.1.201/SC/6239 he INF CORR 488 he INF CORR 1668/MP 25.1.201/SC/2709 25.1.201/SC/2846	TBA	1	M	1	4	4	104,425	0	104,425	0	130,427	0	130,427	N/A	5B	0		
189		Discovery of Low Voltage Cable in Road Formation	13/11/2008	20/11/08 18/12/08 01/05/09	25.1.201/AMH/507 he INF CORR 404 25.1.201/AMH/1051 he INF CORR 484 25.1.201/SC/2950	N	0	M	1	4	4	0	0	0	0	0	0	0	VPS	2	1B	0	
190		Discovery of Gas Main - Change 353 RHS	13/11/2008	20/11/08 01/12/08 18/12/08 15/04/09	25.1.201/AMH/508 he INF CORR 404 25.1.201/AMH/1052 he INF CORR 484	N	1	M	1	4	4	0	0	0	0	0	0	0	VMS	2	1B	0	
191		Discovery of concrete encased lighting cable - Change 350 RHS	13/11/2008	20/11/08 12/12/08 18/12/08 20/01/09 26/01/09 25/01/09 20/02/09 06/03/09 16/03/09 08/05/09	25.1.201/AMH/509 he INF CORR 404 25.1.201/AMH/1053 he INF CORR 485 25.1.201/AL/207 he INF CORR 612 25.1.201/AL/207 he INF CORR 612 25.1.201/AL/207 he INF CORR 612 25.1.201/AL/207 he INF CORR 612 25.1.201/AMH/1660 he INF CORR 921 25.1.201/AMH/1935 he INF CORR 1416/MP 25.1.201/AMH/2658	Y	0	M	1	4	4	0	0	0	0	0	0	0	0	VPS	2	1B	0
192	14	Discovery of Cable & Wireless ducts - Change 108	17/11/2008	27/11/08 01/12/08 12/12/08 18/12/08 20/01/09 26/01/09 25/01/09 20/02/09 06/03/09 16/03/09 08/05/09	25.1.201/AMH/910 he INF CORR 404 25.1.201/AMH/1054 he INF CORR 485 25.1.201/AL/207 he INF CORR 612 25.1.201/AL/207 he INF CORR 612 25.1.201/AL/207 he INF CORR 612 25.1.201/AL/207 he INF CORR 612 25.1.201/AMH/1645 he INF CORR 923 25.1.201/AMH/1935 he INF CORR 1416/MP 25.1.201/AMH/2658	Y	1	M	1	4	4	150	0	150	0	167	161	26	VPS	2	1B	161	

CEC00624371_0160



ETN INFRACO NOTIFICATION of tie CHANGE (INTC)
CONFIDENTIAL

Withdrawn/Superseded/Cancelled
Delay Only
Other Order Issued

Ref. No.	Change Order ID	Description	Date Notified	Date of further letters	Letter Ref	Agreed in Principle?	Estimate Issued? 1=Y, 0=N	Compensation Event	Type	Change Type	Pricing Method	Value Estimate (GBP)										Allocation of Cost		Section	Change Order Value (BSQ)		
												£ Submitted (Euros) (CAF)										£ Agreed	£ Not Agreed			Psum or VE	Number
												See Notes	See Notes	See Notes	See Notes	See Notes	See Notes	See Notes	See Notes	See Notes	See Notes						
193	46	Discovery of Hydrant in Kerk life - Change 333 RHS	09/11/2008	20/11/08 01/12/08 12/12/08 13/12/08 20/12/08 26/12/08 12/01/09 20/02/09 06/03/09 16/03/09 03/04/09 16/04/09 20/04/09 08/05/09 09/05/09 10/05/09	25.1.201/MRH/151 file INF CORR 434 25.1.201/MRH/1055 file INF CORR 495 25.1.201/MRH/1207 file INF CORR 172 file INF CORR 374 file INF CORR 785 25.1.201/MRH/1661 file INF CORR 20 25.1.201/MRH/1936 25.1.201/MRH/2083 file INF CORR 1282/CB.1 25.1.201/MRH/2267 file INF CORR 1349/MP file INF CORR 1416/MP file INF CORR 1367/CB 25.1.201/MRH/2654	Y	1		M	F	4	0	333	0	0	333	33	26	58	449	354	59	VPS	2	15	381	
194		Discovery of Duct Crossings - Chainage 266 RHS	13/11/2008	20/11/08 01/12/08 15/12/08 15/04/09	25.1.201/MRH/812 file INF CORR 404 25.1.201/MRH/1656 file INF CORR 484 e-mail SC-MRH	N	1		M	F	4	0	0	0	0	0	0	0	0	0	0	0	VPS	2	10	0	
195	45	Discovery of temporary pedestrian crossing lighting ducts and junction box above formation and fouling kerk lines - Chainage 245-266 RHS	13/11/2008	20/11/08 01/12/08 12/12/08 10/01/09 26/01/09 12/02/09 20/02/09 25/02/09 06/03/09 16/03/09 27/03/09 08/04/09 29/04/09 08/05/09 10/05/09	25.1.201/MRH/813 file INF CORR 404 25.1.201/MRH/1057 file INF CORR 495 25.1.201/MRH/1207 file INF CORR 612 25.1.201/MRH/1375 file INF CORR 701 25.1.201/MRH/1664 25.1.201/MRH/1749 file INF CORR 817 25.1.201/MRH/1936 file INF CORR 1123 25.1.201/MRH/2254 file INF CORR 1349/MP file INF CORR 1416/MP 25.1.201/MRH/2654	Y	1		M	F	4	0	569	0	0	569	56	41	88	792	667	93	VPS	2	15	657	
196		Little King Street works required by GEC outside the Limits of Deviation	06/11/2008	30/11/08 07/11/08 27/11/08 26/01/09 10/02/09 12/02/09 27/02/09 05/03/09 27/03/09 03/04/09 07/04/09	SDS-ULE90130-01-LET-00552 25.1.201/JH/167 25.1.201/JH/176 file INF CORR 437 SDS-ULE90130-01-LET-00555 SDS-ULE90130-SW-LET-01379 25.1.201/MRH/1570 file INF CORR 794 25.1.201/MRH/1799 file INF CORR 1041 25.1.201/JH/2162 25.1.201/MRH/2155	Y	1		I	I	4	9,172	0	0	9,172	917	079	0	10,768	0	10,768	N/A		10	0		
197		Cycle path near Gyle tram stop. Widening of shared cycleway/footway required by GEC outside the Limits of Deviation.	07/11/2008	30/11/08 07/11/08 05/12/08 26/01/09 10/02/09 12/02/09 20/02/09 25/02/09 26/02/09 27/02/09 05/03/09 26/03/09	SDS-ULE90130-05-LET-00347 25.1.201/JH/170 25.1.201/JH/178 file INF CORR 457 SDS-ULE90130-05-LET-00360 SDS-ULE90130-SW-LET-01379 25.1.201/JH/1581 file INF CORR 777 25.1.201/MRH/1735 25.1.201/JH/1749 file INF CORR 794 25.1.201/MRH/1799 25.1.201/MRH/2162 25.1.201/MRH/2155	Y	1		I	I	4	10,346	0	0	10,346	1,035	766	0	12,146	0	12,146	N/A		50	0		
198	20	Coager Roundabout Lighting Full re-lighting required by GEC - a portion of the works is outside the Limits of Deviation.	10/11/2008	07/11/08 26/11/08 03/11/08 03/12/08 17/12/08 10/01/09 12/02/09 27/02/09 05/03/09 26/03/09 04/04/09 07/04/09 26/05/09	SDS-ULE90130-05-LET-00348 25.1.201/JH/178 25.1.201/JH/177 file INF CORR 429 25.1.201/MRH/1078 25.1.201/MRH/1078 SDS-ULE90130-05-LET-00361 file INF CORR 487 SDS-ULE90130-SW-LET-01379 25.1.201/MRH/1567 file INF CORR 794 25.1.201/MRH/1799 file INF CORR 1040 25.1.201/JH/2163 25.1.201/MRH/2163 25.1.201/MRH/2163 25.1.201/MRH/2163	Y	1		I	I	4	4,247	0	0	4,247	425	314	0	4,985	0	4,985	N/A		50	0		
199		IFC Drawing changes - Balgreen Bridge S22a	06/11/2008	19/11/08 19/11/08 26/01/09 02/02/09 03/02/09 06/03/09 18/03/09 18/03/09	25.1.201/MRH/366 file INF CORR 362 25.1.201/MRH/367 file INF CORR 621 25.1.201/MRH/1454 25.1.201/MRH/1457 file INF CORR 884 file INF CORR 883 25.1.201/MRH/1992 25.1.201/MRH/1993	TBA	0		M	F	1,2,3	0	0	0	0	0	0	0	0	0	0	N/A		50	0		
200		IFC Drawing changes - Saughton Bridge	06/11/2008	19/11/08 19/11/08 26/01/09 09/02/09	25.1.201/MRH/377 file INF CORR 372 25.1.201/MRH/365 file INF CORR 632 25.1.201/MRH/1545	TBA	0		M	F	1,2,3	0	0	0	0	0	0	0	0	0	0	N/A		50	0		
201		IFC Drawing changes - Deptford Access Bridge	06/11/2008	12/11/08 13/11/08 19/11/08 19/11/08 20/01/09 26/01/09 02/02/09 03/02/09 03/02/09 20/02/09 26/02/09	25.1.201/MRH/365 file INF CORR 368 file INF CORR 363 25.1.201/MRH/363 25.1.201/MRH/366 file INF CORR 634 25.1.201/MRH/1355 25.1.201/JH/1457 25.1.201/JH/1457 25.1.201/MRH/1470 file INF CORR 1298/AS 25.1.201/MRH/2448	TBA	0		M	F	1,2,3	0	0	0	0	0	0	0	0	0	0	N/A		50	0		

CEC00624371_0161

ETN INFRACO NOTIFICATION OF THE CHANGE (INTC)
CONFIDENTIAL



Ref.	The Change Order Ref.	Description	Date Notified	Date of further letters	Letter Ref	Agreed in Principle?	Estimate Issued? (Y/N/0=N)	Compensation Event	Change Type	Change Method	Value Estimate (€uros) (CAF)						Allocation of Cost	Section	Change Order Value (€SQ)							
											CAF	Siemens	Bilfinger	Subtotal	H&P	Consentium				Other	Total	£ Agreed	£ Not Agreed	Number	Location	
220	33	Discovery of Water extraction pipework above formation level - Channage 161 RHS	13/11/2008	20/11/08 01/12/08 12/12/08 18/12/08 20/01/09 30/01/09 30/01/09 20/02/09 06/03/09 16/03/09 31/03/09 16/04/09 17/04/09 17/04/09 18/05/09 08/05/09 18/05/09	25.1.201/AMRH/0919 the INF CORR 404 25.1.201/AMRH/1061 the INF CORR 485 25.1.201/AL/1207 the INF CORR 612 25.1.201/AMRH/1697 the INF CORR 713 25.1.201/AMRH/1667 the INF CORR 911 25.1.201/AMRH/1935 25.1.201/DMC/P01/12079 the INF CORR 1384/CB 25.1.201/AMRH/2369 the INF CORR 1416/MP 25.1.201/AMRH/1387 the INF CORR 1387 CE 25.1.201/AMRH/2658	Y	1	I	1	4	0	0	66	0	0	0	0	0	92	12	VPS	2	1B	80		
221		Discovery of MUBFA pipework containing water main and grommets fouling the new kerb line - Channage 125 RHS	13/11/2008	20/11/08 01/12/08 12/12/08 18/12/08 20/01/09 30/01/09 20/02/09 06/03/09 16/03/09 31/03/09 16/04/09 17/04/09 17/04/09 18/05/09 08/05/09 18/05/09	25.1.201/AMRH/0919 the INF CORR 404 25.1.201/AMRH/1061 the INF CORR 485 25.1.201/AL/1207 the INF CORR 612 25.1.201/AMRH/1697 the INF CORR 713 25.1.201/AMRH/1667 the INF CORR 911 25.1.201/AMRH/1935 25.1.201/DMC/P01/12079 the INF CORR 1384/CB 25.1.201/AMRH/2369 the INF CORR 1416/MP 25.1.201/AMRH/1387 the INF CORR 1387 CE 25.1.201/AMRH/2658	N/A	N/A	I	1	N/A		0	0	0	0	0	0	0	0	0	VPS	2	1B	0		
222	66	Discovery of valves and a hydrant fouling the new kerb line - Channage 120 RHS	13/11/2008	20/11/08 01/12/08 12/12/08 18/12/08 20/01/09 30/01/09 20/02/09 06/03/09 16/03/09 31/03/09 16/04/09 17/04/09 17/04/09 18/05/09 08/05/09 18/05/09	25.1.201/AMRH/0919 the INF CORR 404 25.1.201/AMRH/1061 the INF CORR 485 25.1.201/AL/1207 the INF CORR 612 25.1.201/AMRH/1697 the INF CORR 713 25.1.201/AMRH/1667 the INF CORR 911 25.1.201/AMRH/1935 25.1.201/DMC/P01/12079 the INF CORR 1384/CB 25.1.201/AMRH/2369 the INF CORR 1416/MP 25.1.201/AMRH/1387 the INF CORR 1387 CE 25.1.201/AMRH/2658	Y	1	I	1	4	0	0	627	0	0	0	0	0	0	0	0	0	VPS	2	1B	618
223	84	Discovery of stone culvert - Channage 100 RHS	17/11/2008	20/11/08 01/12/08 12/12/08 18/12/08 20/01/09 30/01/09 20/02/09 06/03/09 16/03/09 31/03/09 16/04/09 17/04/09 17/04/09 18/05/09 08/05/09 18/05/09	25.1.201/AMRH/0919 the INF CORR 404 25.1.201/AMRH/1061 the INF CORR 485 25.1.201/AL/1207 the INF CORR 612 25.1.201/AMRH/1697 the INF CORR 713 25.1.201/AMRH/1667 the INF CORR 911 25.1.201/AMRH/1935 25.1.201/DMC/P01/12079 the INF CORR 1384/CB 25.1.201/AMRH/2369 the INF CORR 1416/MP 25.1.201/AMRH/1387 the INF CORR 1387 CE 25.1.201/AMRH/2658	N/A	N/A	I	1	4	0	0	2,362	0	0	0	0	0	0	0	0	0	VPS	2	1B	1,018
224		Discovery of Scottish Power cables - Channage 90 RHS	17/11/2008	20/11/08 01/12/08 12/12/08 18/12/08 20/01/09 30/01/09 20/02/09 06/03/09 16/03/09 31/03/09 16/04/09 17/04/09 17/04/09 18/05/09 08/05/09 18/05/09	25.1.201/AMRH/0919 the INF CORR 404 25.1.201/AMRH/1061 the INF CORR 485 25.1.201/AL/1207 the INF CORR 612 25.1.201/AMRH/1697 the INF CORR 713 25.1.201/AMRH/1667 the INF CORR 911 25.1.201/AMRH/1935 25.1.201/DMC/P01/12079 the INF CORR 1384/CB 25.1.201/AMRH/2369 the INF CORR 1416/MP 25.1.201/AMRH/1387 the INF CORR 1387 CE 25.1.201/AMRH/2658	N/A	N/A	I	1	N/A		0	0	0	0	0	0	0	0	0	0	VPS	2	1B	0	
225	35	Repairs required to ramp to allow pedestrian access - Channage 170 RHS	17/11/2008	27/11/08 09/01/09 20/01/09 26/01/09 26/02/09 29/02/09	25.1.201/AMRH/0923 the INF CORR 438 25.1.201/AL/1286 the INF CORR 557 25.1.201/AL/1370 the INF CORR 753 25.1.201/AMRH/1494/MP	Y	1	I	1	4	0	0	264	0	0	0	0	0	0	0	0	N/A	0	1B	283	
226		Operational Design Review of Depot - changes arising	25/11/2008	20/02/09 11/03/09 30/02/09	the INF CORR 757 the INF CORR 757 the INF CORR 399	TBA	0	D	1	1,2,3,4	0	0	0	0	0	0	0	0	0	0	0	N/A	0	8	0	
227		Operational Design Review of Haymarket - changes arising	25/11/2008	30/02/09	the INF CORR 757	TBA	0	D	1	1,2,3,4	0	0	0	0	0	0	0	0	0	0	0	N/A	0	2	0	
228		Application of 100mm subwidth LCD at Princes Mill	09/12/08	09/12/08 12/12/08 30/01/09 03/03/09 06/03/09 23/03/09 16/04/09 23/04/09 24/04/09 06/05/09 08/05/09 11/05/09	SO5-ULE90130-SW/LET-01520 the INF CORR 483 25.1.201/AMRH/1138 25.1.201/AMRH/1435 the INF CORR 806 25.1.201/AMRH/1812 the INF CORR 1071 the INF CORR 1266/OS 25.1.201/AMRH/2301 SO5-ULE90130-SW/LET-01520 25.1.201/AMRH/2515 25.1.201/AMRH/2579 25.1.201/AMRH/2585	Y	1	I	1	4	5,080	0	0	0	5,080	0	0	0	0	0	0	0	N/A	0	1C	0
229		Operational Design Review of Haymarket - changes arising	25/11/2008	30/02/09	the INF CORR 757	TBA	0	D	1	1,2,3,4	0	0	0	0	0	0	0	0	0	0	0	N/A	0	2	0	
230		IFC Drawing Changes - Tower Bridge Structure	11/12/2008	06/03/09 18/03/09 10/06/09 29/06/09	25.1.201/AMRH/1132 the INF CORR 859 25.1.201/AMRH/1895 the INF CORR 1612/C 25.1.201/AMRH/2585	TBA	0	M	1	1,2,3	0	0	0	0	0	0	0	0	0	0	0	N/A	0	1A	0	
231		IFC Drawing Changes - Section 1C Drainage	12/12/2008	13/01/09 23/01/09 18/02/09 23/02/09 05/03/09 17/04/09 23/04/09 23/04/09	25.1.201/AMRH/1513 the INF CORR 453 25.1.201/AMRH/1346 the INF CORR 753 25.1.201/AMRH/1711 25.1.201/AMRH/1804 the INF CORR 1288/FPD 25.1.201/AMRH/2373	TBA	0	M	1	1,2,3	0	0	0	0	0	0	0	0	0	0	0	N/A	0	1C	0	
232		IFC Drawing Changes - Section 1C Road Section	12/12/2008	13/01/09 05/03/09 17/04/09	25.1.201/AMRH/1144 the INF CORR 551 25.1.201/AMRH/1806 the INF CORR 1288/FPD	TBA	0	M	1	1,2,3	0	0	0	0	0	0	0	0	0	0	0	N/A	0	1C	0	

ETN INFRACO NOTIFICATION OF THE CHANGE (INTC)
CONFIDENTIAL



Ref.	The Change Order Ref.	Description	Date Notified	Date of further letters	Letter Ref	Agreed in Principle?	Estimate Issued? (Y/N/0=N)	Compensation Event	Type	Change Type	Pricing Method	Value Estimate (€uros) (CAF)										Allocation of Cost	Location			
												Siemens	Bilfinger	CAF	Subtotal	Other P.P.	Consortium	Other Prelims	Total	£ Agreed	£ Not Agreed			Form of V/E	Number	Section
233		TEC Drawing Changes - Section 1C lighting layout	12/12/2008	13/01/09 05/03/09 12/03/09 18/03/09 23/04/09 07/05/09	25.1.201/07/145 the INF CORR 591 25.1.201/07/1805 the INF CORR 981 25.1.201/07/1957 the INF CORR 1318/5B 25.1.201/07/2034 the INF CORR 411	TBA	0		M	1	1,2,3	0	0	0	0	0	0	0	0	0	N/A	1	0			
234		Leith Walk (Section 1B) Groundworks - Move T&S ducts fouling kerbline to new loading bay - Ch.345 - 365	17/11/2008	20/11/08 01/12/08 12/12/08 20/01/09 25/01/09 20/02/09 06/03/09 16/03/09 17/04/09 08/05/09 18/05/09 12/06/09	25.1.201/07/2034 the INF CORR 411 25.1.201/AMRH/1067 the INF CORR 485 25.1.201/AL/1207 the INF CORR 612 25.1.201/AL/1392 the INF CORR 614 25.1.201/AMRH/1699 the INF CORR 909 25.1.201/AMRH/1935 25.1.201/DMA/P/01/1791 the INF CORR 1416/MP 25.1.201/AM/1255/0 the INF CORR 1396/MP 25.1.201/07/2034 the INF CORR 411	Y	1		I	1	4	4864	0	4864	486	360	851	5,562	0	5,562	0	VPS	2	1B	0	
235		Leith Walk (Section 1B) Groundworks - Move BT ducts fouling kerbline to new loading bay Ch.345 - 365	17/11/2008	20/11/08 01/12/08 12/12/08 20/01/09 25/01/09 20/02/09 06/03/09 16/03/09 17/04/09 08/05/09 18/05/09 12/06/09	25.1.201/07/2034 the INF CORR 411 25.1.201/AMRH/1068 the INF CORR 485 25.1.201/AL/1207 the INF CORR 612 25.1.201/AL/1392 the INF CORR 614 25.1.201/AMRH/1699 the INF CORR 909 25.1.201/AMRH/1935 25.1.201/DMA/P/01/1791 the INF CORR 1416/MP 25.1.201/AM/1255/0 the INF CORR 1396/MP 25.1.201/07/2034 the INF CORR 411	Y	1		I	1	4	0	0	0	0	0	0	0	0	0	0	0	VPS	2	1B	0
236		Plans for drainage outfall consent at the Airport	04/12/08	17/11/08 17/11/08 26/11/08	25.1.201/07/2034 the INF CORR 411 25.1.201/07/2034 the INF CORR 411 25.1.201/07/2034 the INF CORR 411	TBA	0		I	1	1,2,3	0	0	0	0	0	0	0	0	0	0	N/A	7	0		
237	10	Move site boundary fencing at Haymarket Car Park to facilitate transfer of night suppliers on 08 and 15/11/08. Temporary Traffic Lights opposite Manderston Street required because MUOFA works are incomplete	13/11/2008	09/12/08 17/12/08	25.1.201/AL/1120 the INF CORR 536 25.1.201/07/2034 the INF CORR 411	Y	1		I	1	4	791	0	791	0	59	138	938	850	138	0	VPS	1	2A	850	
238		Temporary Traffic Lights opposite Manderston Street required because MUOFA works are incomplete	12/12/2008	23/01/09 06/03/09 18/03/09 12/02/09 20/02/09 31/03/09 03/04/09 09/04/09 26/05/09	25.1.201/AMRH/1147 the INF CORR 626 25.1.201/07/2034 the INF CORR 411 25.1.201/07/2034 the INF CORR 411 25.1.201/07/2034 the INF CORR 411 25.1.201/07/2034 the INF CORR 411	Y	1		I	1	4	11,182	0	11,182	1,118	627	1,957	15,085	0	15,085	0	N/A	1B	0		
239	29	Additional Trenches at CH15 - CH160 (Section 1B) Removal and Reinstatement of Phone Box	20/11/2008	09/12/08 30/01/09	25.1.201/AMRH/1147 the INF CORR 626 25.1.201/07/2034 the INF CORR 411	Y	1		I	1	4	440	0	440	44	33	77	594	594	0	0	N/A	1B	0		
240		Removal and Reinstatement of Phone Box	05/01/2009	01/12/08 12/12/08 12/12/08 12/12/08 19/12/08 22/12/08 26/01/09 26/01/09 11/02/09 04/03/09 25/03/09 05/05/09 23/05/09	25.1.201/AMRH/1047 the INF CORR 626 25.1.201/07/2034 the INF CORR 411 25.1.201/07/2034 the INF CORR 411 25.1.201/07/2034 the INF CORR 411 25.1.201/07/2034 the INF CORR 411 25.1.201/07/2034 the INF CORR 411	Y	1		I	1	4	6,129	0	6,129	613	454	1,073	8,267	0	8,267	0	VPS	2	1B	0	
241		MUOFA has commenced works on Bankhead Drive preventing infraco progress in the area until its works are complete.	20/11/2008	12/12/08 06/03/09 18/03/09 12/02/09 14/04/09 08/05/09 18/05/09 12/06/09	25.1.201/AMRH/1149 the INF CORR 626 25.1.201/07/2034 the INF CORR 411 25.1.201/07/2034 the INF CORR 411 25.1.201/07/2034 the INF CORR 411	N/A	N/A					0	0	0	0	0	0	0	0	0	0	N/A	5B	0		
242		TRO Presentations by SDS to the public during September 2008 and changes to drawings arising from the consultation process.	20/11/08	21/11/08 21/11/08 04/02/09 25/02/09 25/02/09 25/02/09 11/03/09 16/03/09 18/03/09 14/05/09	25.1.201/AMRH/1695 the INF CORR 909 25.1.201/AMRH/1934 the INF CORR 841 25.1.201/AMRH/1934 the INF CORR 841 25.1.201/AMRH/1934 the INF CORR 841 25.1.201/AMRH/1934 the INF CORR 841 25.1.201/AMRH/1934 the INF CORR 841	N	0		D	1	1	0	0	0	0	0	0	0	0	0	0	N/A	All	0		
243	68	Porto Substation - lack of as-built information	24/11/2008	02/12/08 05/12/08 10/02/09 12/02/09 27/03/09 07/04/09 25/04/09 12/05/09	25.1.201/AMRH/1695 the INF CORR 909 25.1.201/AMRH/1934 the INF CORR 841 25.1.201/AMRH/1934 the INF CORR 841 25.1.201/AMRH/1934 the INF CORR 841 25.1.201/AMRH/1934 the INF CORR 841	Y	1		I	1	1	7,045	0	7,045	704	521	0	8,270	445	7,824	445	N/A	1A	7,824		

CEC00624371_0165

ETN INFRACO NOTIFICATION OF THE CHANGE (INTC)
CONFIDENTIAL



Ref.	The Change Order Ref.	Description	Date Notified	Date of further letters	Letter Ref	Agreed in Principle?	Estimate Issued? (Y/N/NA)	Compensation Event	Type	Change Type	Rifling Method	Value Estimate (comp)										Change Order Value (OSQ)				
												Siemens	Bilfinger	Other Prolims	Consortium Prolims	Other Prolims	Total	E Agreed	E Not Agreed	Allocation of Cost	Section		Location			
												Siemens	Bilfinger	Other Prolims	Consortium Prolims	Other Prolims	Total	E Agreed	E Not Agreed	Form of V/E	Number	See Notes	Section	Location		
		Carry out Scottish Power Diversion at Eagle Roundabout	18/12/2008	05/01/09 05/01/09 12/01/09 15/01/09 20/01/09 23/01/09 24/01/09 30/01/09 06/02/09 06/02/09 18/02/09 23/02/09 04/03/09 05/03/09 18/03/09 27/03/09 03/04/09 08/05/09 18/05/09	the INF CORR 487 25.1.201/AMRH/235 the INF CORR 579 25.1.201/AL/1289 the INF CORR 605 25.1.201/AMRH/1288 the INF CORR 605 30/01/09 25.1.201/AMRH/1496 the INF CORR 755 25.1.201/AMRH/706 25.1.201/AMRH/1496 the INF CORR 755 25.1.201/AMRH/1695 the INF CORR 1127 the INF CORR 1145 the INF CORR 1416/MP 25.1.201/AMRH/2658	Y	1		M	1	3	0	13,928	0	13,928	0	13,928	0	0	VPS						
220	20	Instructions arising from Trackform Development Workshop	18/12/2008	07/01/09 29/01/09 06/02/09 13/02/09 19/02/09 26/05/09	the INF CORR 545 25.1.201/AMRH/1245 SDS-ULE90130-SW-LET-01360 25.1.201/AMRH/1510 the INF CORR 755 25.1.201/AMRH/1510 25.1.201/AMRH/1510 25.1.201/AMRH/1510	Y	1		I	1,2,3	315,863	0	315,863	31,606	0	29,389	0	31,606	0	N/A			AI	371,058		
221		RBS5 Tramstop - Provide an Estimate for diversion of LV Power and Water supplies crossing the tram track	17/12/2008	07/01/09 09/01/09 06/03/09 12/02/09 17/03/09 09/04/09 18/04/09 18/04/09	the INF CORR 544 25.1.201/AL/1248 the INF CORR 854 25.1.201/AMRH/1505 the INF CORR 1568 the INF CORR 1229/AS 25.1.201/AL/2304 25.1.201/AMRH/2318	Y	1		M	1	3	4,506	0	4,506	0	333	789	0	5,628	VPS			5C	0		
222	19	Road Construction Details - Construction Methodology Statements for Road Conditions Required depth of reconstruction	18/12/2008	07/01/09 20/01/09 29/01/09 06/02/09 10/02/09 10/02/09 13/02/09 19/02/09 19/03/09 31/03/09 26/05/09	the INF CORR 547 25.1.201/AMRH/1246 SDS-ULE90130-SW-LET-01359 25.1.201/AMRH/1508 SDS-ULE90130-01-LET-01366 the INF CORR 755 25.1.201/AMRH/1548 25.1.201/AMRH/1548 SDS-ULE90130-SW-LET-01468 25.1.201/AMRH/2138 25.1.201/AMRH/2274	Y	1		M	1,2,3	317,206	0	317,206	31,733	0	29,462	0	317,206	0	317,206	N/A		AI	372,540		
223	11	Create a starter layer below subbase level at Carrickmore	18/12/2008	08/01/09 20/01/09 06/03/09 18/03/09 03/04/09 09/04/09 09/05/09 13/05/09	the INF CORR 545 25.1.201/AMRH/1254 the INF CORR 558 the INF CORR 927 25.1.201/AMRH/1997 the INF CORR 1138 25.1.201/AMRH/2240 the INF CORR 1380/MP 25.1.201/AMRH/2308	Y	1		I	4	0	77,308	0	77,308	0	5,721	13,529	0	96,558	N/A		5B	65,029			
224	35	Excavation Retaining Wall V14 - Re-design to accommodate Water Mains and Gas Main	12/01/2009	15/01/09 26/01/09 12/02/09 19/02/09 25/02/09 17/03/09 27/03/09 01/04/09 02/04/09 07/04/09 08/04/09 14/04/09 14/04/09 07/05/09 09/05/09 11/05/09 18/05/09	the INF CORR 230 25.1.201/AMRH/1367 the INF CORR 731 SDS-ULE90130-07-LET-00888 the INF CORR 948 the INF CORR 1126 the INF CORR 1126 SDS-ULE90130-SW-LET-01492 25.1.201/AMRH/2193 25.1.201/AMRH/2193 14/04/09 25.1.201/AMRH/2320 the INF CORR 1237/MB 25.1.201/AMRH/2573 the INF CORR 1416/MP 25.1.201/AMRH/2589	Y	1		M	1	3	380	662	0	77	0	1,157	0	1,157	N/A		7		0		
225	21	Princes Street Construction Works - closure to traffic during construction works	12/01/2009	15/01/09 18/01/09 13/02/09 16/02/09 04/03/09 06/03/09 18/03/09 24/03/09 08/04/09 08/04/09 15/04/09 25/05/09	the INF CORR 573 EINBSC-ULE90130-07-LET-00887 25.1.201/AMRH/1233 the INF CORR 758 25.1.201/AL/1668 the INF CORR 839 the INF CORR 914 25.1.201/AMRH/1692 18/03/09 the INF CORR 1006 25.1.201/AMRH/2067 the INF CORR 1109 the INF CORR 1154 25.1.201/AMRH/2291 the INF CORR 839	Y	1		I	1	3	0	5,576	0	413	876	0	6,965	418	N/A		1C,1D	6,547			
		BSL Tramstop - BSA Interface	06/01/2009	16/01/09 19/01/09 20/02/09 25/03/09 01/04/09 14/04/09 22/05/09 26/05/09	25.1.201/AMRH/1294 SDS-ULE90130-07-LET-00887 25.1.201/AMRH/2095 the INF CORR 1234/AS 25.1.201/AMRH/2210 25.1.201/AMRH/2274	Y	1		M	1	1,2,3	5,812	0	5,812	581	430	0	6,823	N/A		7		0			



ETN INFRACO NOTIFICATION of the CHANGE (INTC)
CONFIDENTIAL

Withdrawn/Superseded/no cost
(delay on)
Change Order less than

Ref. No.	Change Order TCD	Description	Date Notified	Date of further letters	Letter Ref	Agreed in Principle?	Estimate Issued? (Y/N)	Compensation Event	Type	Change Type	Pricing Method	Value Estimate (GBP)										Allocation of Cost		Section	Change Order Value (BSQ)				
												Submitted (Euros) (CAF)	£ Agreed	£ Not Agreed	Sum of VET	Number	See Notes	See Notes	See Notes	SDS	Bilfinger	Siemens	CAF			Sub-total	H & P	Consortium Prelims	Other Prelims
276		OLE Design changes in the area between Haymarket and Newhaven	15/01/2009	23/02/09 05/03/09 16/03/09 19/03/09	ETN (BSQ) TIE 00-APR090336 SDS-ULE90130-SW-LET-01483 ETN (REL) TIE 00-APR090336 File INF CORR 727 File INF CORR 1060	N/A	N/A		Q	1	1	0	0	0	0	0	0	0	0	0	0	0	0	0	0	N/A	1,2	0	
277	36	Airport Tramstop Canopy tie in options	20/01/2009	27/01/09 28/01/09 25/02/09 01/04/09 02/04/09 14/04/09 20/04/09 04/05/09 11/05/09	File INF CORR 614 25.1.201/AMH/1405 25.1.201/AMH/1417 SDS-ULE90130-07-LET-00390 25.1.201/DOC/2149 SDS-ULE90130-SW-LET-01494 File INF CORR 1234/AS 25.1.201/AMH/2335 File INF CORR 1278/SDS 25.1.201/AMH/2649	Y	1		M	4	1,2,3	42,954	0	0	0	42,954	4,295	3,179	0	50,428	0	50,428	N/A	7	0				
278		Wilder Area Modelling Progress	27/01/2009	23/09/2009	SDS-ULE90130-SW-LET-1208 25.1.201/AMH/1407	TBA	D		Q	1	3	0	0	0	0	0	0	0	0	0	0	0	0	0	0	VPS	All	0	
279		West Piton Tram stop	29/01/2009	29/01/09 12/02/09 27/02/09 13/03/09 18/03/09 23/03/09 25/03/09 26/03/09 30/04/09 06/05/09 23/05/09 26/05/09	25.1.201/AMH/1428 25.1.201/AMH/1425 File INF CORR 739 SDS-ULE90130-05-LET-00370 25.1.201/DOC/1933 SDS-ULE90130-03-LET-00270 SDS-ULE90130-SW-LET-01471 25.1.201/DOC/2072 25.1.201/AMH/2091 File INF CORR 1362/DS 25.1.201/AMH/2540 SDS-ULE90130-SW-LET-01597 25.1.201/AMH/2948	Y	1		Q	1	3	732	0	0	0	732	73	54	0	858	0	858	N/A	3	0				
280		Change to demarcation requirements	28/01/09 19/02/09	13/01/09 18/02/09 26/02/09 03/03/09 10/03/09 18/03/09 18/03/09 23/03/09 24/03/09 14/04/09 29/04/09 01/05/09	25.1.201/DOC/1421 File INF CORR 577 25.1.201/AMH/1679 25.1.201/AMH/1681 SDS-ULE90130-SW-LET-01395 File INF CORR 804 25.1.201/DOC/1903 File INF CORR 960 25.1.201/AMH/1971 SDS-ULE90130-SW-LET-01464 UL00130-01-LET-00972 25.1.201/AMH/2047 25.1.201/AMH/2271 SDS-ULE90130-01-LET-01005 File INF CORR 1566/DS	N	1		Q	1	1	22,897	0	0	0	22,897	2,290	1,694	0	26,881	0	26,881	N/A	All	0				
281		Revised proposals for Cathedral Lane Substation	22/01/2009	27/01/09 28/01/09 03/03/09 06/03/09 12/03/09 12/03/09 18/03/09 18/03/09 09/04/09 16/04/09 17/04/09 21/04/09 23/04/09 23/04/09 19/06/09	File INF CORR 628 25.1.201/AMH/1404 SDS-ULE90130-01-LET-00927 File INF CORR 603 SDS-ULE90130-01-LET-00960 25.1.201/AMH/1906 File INF CORR 375 25.1.201/AMH/1972 25.1.201/DOC/1975 File INF CORR 1204/MP File INF CORR 1266/DS SDS-ULE90130-01-LET-00996 25.1.201/AMH/2350 25.1.201/AMH/2371 25.1.201/AMH/2381 File INF CORR 1692/RS	Y	0		I	1	4	0	0	0	0	0	0	0	0	0	0	0	0	0	0	0	N/A	10	0
282		Request for instruction to deal with Japanese Knotweed at rear of First Scotland Haymarket Depot - Retaining Wall W4	28/01/2009	17/03/09 08/04/09 12/06/09	25.1.201/SC/1415 APP 24/534 (CCO) File INF CORR 1216 25.1.201/DMC/P01/2683	TBA	1		M	1	3,4	0	18,001	0	0	18,001	1,800	1,332	3,150	24,283	0	24,233	N/A	2	0				
283		Edinburgh Park Bridge (S27) - Pier 3 Base Formation	29/01/2009	12/02/09 12/03/09 17/03/09 04/04/09	25.1.201/AMH/1429 25.1.201/AMH/1589 File INF CORR 997 25.1.201/AMH/1568 25.1.201/APP/2751	TBA	1		M	1	3,4	0	7,914	0	0	7,914	791	556	1,585	10,246	0	10,676	N/A	5B	0				
284		Bussell Road Retaining Wall 4 - Options Report	30/01/2009	12/05/09	25.1.201/SC/1445 File INF CORR 1451/AS/6	TBA	0		M	1	3,4	0	0	0	0	0	0	0	0	0	0	0	0	0	N/A	5A	0		
285		Natural Disasters due to the issue of SDS Design programme V4.0	02/02/2009	02/02/09 13/03/09 17/03/09	25.1.201/AS/1449 25.1.201/SC/1450 File INF CORR 981 25.1.201/AMH/1868	N/A	N/A					0	0	0	0	0	0	0	0	0	0	0	0	0	0	N/A	All	0	
286		Princes Street Construction Works - Change to specification - full depth reconstruction	12/02/2009	25.1.201/AMH/1589	25.1.201/AMH/1589	TBA	0		M	1	1,2,3	0	0	0	0	0	0	0	0	0	0	0	0	0	0	N/A	1C,1D	0	
287		Forth Parts Traffic Signal - Section 1A4 - Widened Crossing (required)	06/02/2009	02/02/2009 06/02/09 26/02/09 24/03/09	SDS-ULE90130-01-LET-00929 25.1.201/DOC/1507 25.1.201/AMH/1511 SDS-ULE90130-01-LET-00938 25.1.201/AMH/2049	TBA	1		M	1	1,2,3	8,158	0	0	0	8,158	816	604	0	9,577	0	9,577	N/A	1A	0				
288	19	19	Deviation Road Ball Field (to be paid)	16/01/09 23/01/09	ETN (BSQ) TIE 00-APR090359 ETN (BSQ) TIE 00-APR090359 File INF CORR 511	Y	1		I	1		0	0	0	0	0	0	0	0	0	0	0	0	0	0	N/A	All	0	
289		Cyclaway change at Hawthornvale - Section 1A4	09/02/2009	28/01/09 09/02/09 10/02/09 12/03/09 17/03/09	SDS-ULE90130-01-LET-00925 25.1.201/DOC/1517 25.1.201/AMH/1524 25.1.201/AMH/1541 File INF CORR 999 25.1.201/AMH/1968	TBA	0		Q	1	1	0	0	0	0	0	0	0	0	0	0	0	0	0	0	N/A	1A	0	
290		CAF - Air Supply	10/02/2009	10/02/2009	CAF-ETN-0109	TBA	0					0	0	0	0	0	0	0	0	0	0	0	0	0	0			0	
291		CAF - Lifting System	10/02/2009	10/02/2009	CAF-ETN-0109	TBA	0					0	0	0	0	0	0	0	0	0	0	0	0	0	0			0	
292		Additional Ramp / Steps at Princes Street Retaining Wall - Section 1A4	09/02/2009	26/01/09 09/02/09 10/02/09 12/03/09 17/03/09 18/03/09 23/03/09 30/03/09 09/04/09 17/04/09 18/04/09	SDS-ULE90130-01-LET-00926 25.1.201/AMH/1518 25.1.201/AMH/1526 25.1.201/AMH/1540 File INF CORR 1000 25.1.201/AMH/1969 File INF CORR 1028 SDS-ULE90130-01-LET-00973 25.1.201/AMH/2129 25.1.201/AMH/2387 SDS-ULE90130-01-LET-01599 25.1.201/AMH/2891	N	0		M	1	1,2,3	0	0	0	0	0	0	0	0	0	0	0	0	0	0	0	N/A	1A	0

CEC00624371_0169



ETN INFRACO NOTIFICATION of tie CHANGE (INTC)
CONFIDENTIAL

Withdrawn/Suspended/Not Delay Only
Change Order Issued

Ref. No.	Change Order ID	Description	Date Notified	Date of further letters	Letter Ref	Agreed in Principle?	Estimate Issued? 1=Y, 0=N	Compensation Event	Type	Change Type	Pricing Method	Value Estimate (GBP)										Allocation of Cost		Section	Change Order Value (BSQ)		
												£ Submitted (Euros) (CAF)										£ Agreed	£ Not Agreed			Psum or VE	Number
												SDS	Bilfinger	Siemens	CAF	Sub-total	H & P	Consortium Prelims	Other Prelims	Total							
293	37	Gogar Castle Road tree felling	03/02/2009	17/02/09 24/03/09 31/03/09 09/04/09 17/04/09 25/04/09 08/05/09	25.1.201/SC/1521 25.1.201/SC/1543 file INF CORR 1076 25.1.201/SC/2143 file INF CORR 1223/CD 25.1.201/MRH/2521 file INF CORR 1349/MP file INF CORR 1447/CD	Y	1		M	1	3A	0	990	0	0	990	99	73	173	1,335	1,162	173	N/A	7A	1,162		
294	38	Rainwater access ramp at Gogar Depot	09/02/2009	16/03/09 11/03/09 18/03/09 30/03/09 08/04/09 19/04/09	25.1.201/SC/1521 file INF CORR 861 25.1.201/AD/1267 25.1.201/MRH/1936 INF CORR 1311 25.1.201/SC/2239 file INF CORR 1349/MP	Y	1		M	1	4	6,250	0	0	6,250	0	610	1,444	16,306	6,507	1,792	N/A	7A	8,507			
295	39	Carry-out works to protect existing SGN gas main at Culvert 2	09/02/2009	09/02/09 11/03/09 17/03/09 23/03/09 29/04/09	25.1.201/SC/1522 25.1.201/MRH/1526 file INF CORR 1001 25.1.201/MRH/1968 25.1.201/AL/1911 file INF CORR 1349/MP	Y	1		M	1	3A	0	12,390	0	0	12,390	0	917	2,161	15,475	14,123	1,352	DPS	7A	14,123		
296	39	Formation Level of Gogar Burn Bridge West Abutment	11/02/2009	12/02/09 05/03/09 12/03/09 24/03/09 29/04/09	25.1.201/SC/1555 25.1.201/MRH/1583 25.1.201/AD/246 file INF CORR 1003 file INF CORR 1067 file INF CORR 1349/MP4	Y	1		M	1	3A	0	14,892	0	0	14,892	0	1,043	2,766	17,651	11,595	6,044	N/A	7A	11,597		
297	40	Formation Level of Gogar Burn Bridge East Abutment	11/02/2009	12/02/09 05/03/09 12/03/09 17/03/09 29/04/09	25.1.201/SC/1556 25.1.201/MRH/1583 25.1.201/TA/563 file INF CORR 1002 25.1.201/MRH/1968 file INF CORR 1349/MP4	Y	1		M	1	3A	0	8,265	0	0	8,265	0	816	1,447	10,524	7,288	3,046	N/A	7A	7,288		
298		Revised access arrangements to Depot	16/02/2009	06/03/09 16/03/09 07/04/09 29/04/09 01/05/09	25.1.201/TA/1954 file INF CORR 902 25.1.201/MRH/1928 file INF CORR 1084 25.1.201/TA/2475 file INF CORR 1560/MP	N/A	N/A		M	1	3A	0	0	0	0	0	0	0	0	0	0	0	0	N/A	7A	0	
299		IFC Drawing changes - Edinburgh Park Bridge (Piers, bearing)	16/02/2009	06/03/09 16/03/09 07/04/09 29/04/09 01/05/09	25.1.201/TA/1954 file INF CORR 902 25.1.201/MRH/1928 file INF CORR 1084 25.1.201/TA/2475 file INF CORR 1560/MP	N/A	N/A		M	1	3A	0	0	0	0	0	0	0	0	0	0	0	0	0	N/A	5B	0
300		Network Rail equipment for CAT 3 checking	10/02/2009	10/02/09 26/02/09 26/03/09 08/04/09 08/04/09 08/05/09 04/06/09	25.1.201/SC/1536 25.1.201/SC/1535 file INF CORR 892 INF CORR 893 25.1.201/JR/2202 25.1.201/JR/2201 file INF CORR 1440/VP 25.1.201/SC/2209	N/A	D		M	1	3A	0	0	0	0	0	0	0	0	0	0	0	0	N/A	All	0	
301		Develop and seek approval for enabling works for diversionary route from Princess Street to George Street/Queen Street	26/01/2009	11/02/09 26/02/09 11/03/09 12/03/09 18/03/09 09/04/09 16/04/09 16/04/09 30/04/09 07/05/09	file INF CORR 903 25.1.201/MRH/1549 25.1.201/AL/1656 file INF CORR 890 25.1.201/AL/1998 file INF CORR 950/MP 25.1.201/MRH/2319 file INF CORR 1259/DB 25.1.201/AL/2484 25.1.201/SR/12495	Y	1		M	1	3	0	109,642	0	0	109,642	10,964	8,114	19,187	147,908	15,101	132,807	N/A	1D	0		
302		Protection of live utilities at Russell Road Bridge during construction	03/02/2009	11/02/09 12/02/09 12/03/09 19/03/09 03/04/09 09/04/09 16/04/09 06/05/09	file INF CORR 860 25.1.201/AL/1552 25.1.201/MRH/1587 file INF CORR 893 25.1.201/AL/2512 file INF CORR 1139 25.1.201/AL/2249 file INF CORR 1256/TC 25.1.201/AL/2530	N/A	0		M	1	3A	0	0	0	0	0	0	0	0	0	0	0	0	N/A	2	0	
303	39	Interior layout of Trams	05/02/2009	12/02/09 23/02/09 12/05/09 05/05/09	file INF CORR 859 CAF-ETN 0114 CAF-ETN 0133 file INF CORR 1499 file INF CORR 1631/CD	Y	1		M	1	3A	0	0	0	1,039,367	0	0	0	0	1,039,367	313,221	726,146	N/A	All	0		
304	49	Provisional Sum for Extra Drive for Shell Grip at Junctions	12/02/2009	23/02/09 08/05/09 15/06/09 19/05/09	25.1.201/AD/1590 25.1.201/MRH/1719 file INF CORR 1433/AS 25.1.201/MRH/2641 file INF CORR 1484/JO	T/A	0		M	1	3	0	0	0	0	0	0	0	0	0	0	0	0	DPS	All	0	
305		Crawley Tunnel - Insufficient ground cover	12/02/2009	12/02/09 16/02/09 12/03/09 17/03/09 12/04/09	25.1.201/SC/1597 25.1.201/AS/1539 25.1.201/MRH/1504 file INF CORR 1004 25.1.201/MRH/1968 25.1.201/JH/2847	T/A	0		M	1	1,2,3	0	0	0	0	0	0	0	0	0	0	0	0	N/A	1E	0	
306		Discovery of underground structure on Leith Walk	16/02/2009	04/02/09 12/03/09 13/03/09 30/03/09 08/04/09 14/05/09	file INF CORR 872 25.1.201/SC/1602 file INF CORR 986 25.1.201/SR/1930 25.1.201/JH/2132 25.1.201/JH/2218 25.1.201/SC/2570	Y	0		M	1	3A	0	0	0	0	0	0	0	0	0	0	0	0	N/A	1D	0	
307	76	Contaminated Soil assessment at Haymarket Depot	16/02/2009	07/05/09 22/05/09 27/05/09 11/06/09 26/06/09	25.1.201/SC/1501 25.1.201/CA/2493 E-mail file - 05 file INF CORR 1452/GM/03 25.1.201/MRH/2733 file INF CORR 1553/CD 25.1.201/EG/2927	T/A	1		M	1	3A	0	40,761	0	0	40,761	4,076	3,016	7,133	54,987	48,535	5,452	N/A	2	0		
308		Additional excavation at Carrickknowe South Abutment	23/02/2009	29/04/09 08/05/09 15/05/09 02/06/09	25.1.201/AD/476 file INF CORR 1425/TC 25.1.201/MRH/2844 file INF CORR 1570/MP	N/A	1		M	1	3A	0	29	0	0	29	3	2	5	39	0	39	N/A	5B	0		
309		Edinburgh Park Bridge (S27) - South Abutment Base Formation	23/02/2009	13/03/09 19/03/09 02/04/09 08/05/09	25.1.201/SR/1696 file INF CORR 1028 25.1.201/CA/2085 file INF CORR 1189 25.1.201/SR/2340	Y (Part)	1		M	1	3A	0	14,455	0	0	14,455	0	1,070	2,530	18,054	3,815	15,039	N/A	5B	0		

CEC00624371_0170

ETN INFRACO NOTIFICATION OF THE CHANGE (INTC)

Withdrawn/Superseding cost
Delay Only



Ref.	The Change Order Ref.	Description	Date Notified	Date of further letters	Letter Ref	Agreed in Principle?	Estimate Issued? (Y/N/0=N)	Compensation Event	Type	Change Type	Pricing Method	Value Estimate (€)										Change Order Value (€)			
												Subtotal	Siemens	Bilfinger	Siemens	CAF	Subtotal	Other Prelims	Consentium Prelims	Other Prelims	Total		£ Agreed	£ Not Agreed	Allocation of Cost
360	46	Allocation of Design Risk - earth works 19416	16/04/2009	23/04/09 23/04/09 24/04/09 08/05/09 11/05/09 25/05/09 25/05/09 27/05/09 08/06/09 12/06/09	25.1.201/AMH/2372 SOSULE90130-SW/LET-01519 SOSULE90130-01-LET-01017 SOSULE90130-01-LET-01017 25.1.201/AMH/2372 25.1.201/SNR/214 25.1.201/AMH/2372 25.1.201/AMH/2372 25.1.201/AMH/2372 25.1.201/AMH/2372	Y	1		I		1,2,3	10,544	0	0	10,544	1,054	780	0	12,379	11,933	446	DFS	1A	11,933	
361	41	Switch Power Utility Divisions near Murrayfield Station	24/03/2009	08/05/09 08/05/09 01/06/09 25/06/09	25.1.201/AMH/2372 25.1.201/AMH/2372 25.1.201/AMH/2372 25.1.201/AMH/2372	Y	1		I		3,4	6,957	0	6,957	0	515	1,218	0	8,690	8,690	0	VPS	5A	8,690	
362	35	Edinburgh Park Bridge - North and South Approach Works additional earthworks	14/04/2009	08/05/09 08/05/09 01/06/09 25/06/09	25.1.201/AMH/2372 25.1.201/AMH/2372 25.1.201/AMH/2372 25.1.201/AMH/2372	Y	1		M		1,2,3	180,719	0	180,719	0	13,373	31,626	0	225,719	141,582	84,137	N/A	5B	0	
363		Traffic Management - Provide Wider Area Signage to Princess Street	27/07/2009	16/04/09 07/05/09	25.1.201/AMH/2372 25.1.201/AMH/2372	N	1		D		3,4	8,920	0	8,920	882	653	1,544	0	11,889	11,889	0	N/A	1C,1D	0	
364		New Mainline (MHL) at Balmorie Place	31/03/2009	30/04/09 08/05/09	25.1.201/AMH/2372 25.1.201/AMH/2372	TBA	1		M		3,4	1,395	0	1,395	0	103	0	1,498	666	832	N/A	2	0		
365		Wider Area Flyover Survey and Proposals	08/04/09	08/04/09 16/04/09 23/04/09	25.1.201/AMH/2372 25.1.201/AMH/2372 25.1.201/AMH/2372	TBA	0		D		1,2,3,4	0	0	0	0	0	0	0	0	0	0	N/A	All	0	
366		Geopium Bridge East Abutment - excess ground water	01/05/2009	02/06/09 23/06/09 03/07/09	25.1.201/AMH/2372 25.1.201/AMH/2372 25.1.201/AMH/2372	TBA	1		M		4	2,864	0	2,864	286	212	501	0	3,654	3,654	0	N/A	7A	0	
367		Haymarket Station - Network Rail Access Doorway	22/04/2009	09/04/09 09/04/09	25.1.201/AMH/2372 25.1.201/AMH/2372	Y	0		D		3,4	0	0	0	0	0	0	0	0	0	0	N/A	2	0	
368	42	Demolish all Structures on Plots nos. 7 and 102 near Roseburn Street	27/03/2009	09/04/09 09/04/09	25.1.201/AMH/2372 25.1.201/AMH/2372	Y	0		I		3,4	0	0	0	0	0	0	0	0	0	0	N/A	6A	0	
369		Temporary works solution to maintain Thru and C & W services and disperse water main at A9 Underpass	14/04/2009	23/04/09 16/05/09 15/05/09	25.1.201/AMH/2372 25.1.201/AMH/2372 25.1.201/AMH/2372	TBA	0		M		3,4	0	0	0	0	0	0	0	0	0	0	N/A	5C	0	
370		Existing ground levels at Edinburgh Park Bridge	14/04/2009	22/04/09 01/06/09 03/07/09	25.1.201/AMH/2372 25.1.201/AMH/2372 25.1.201/AMH/2372	TBA	1		M		1,2,3,4	70,694	0	70,694	0	5,231	12,371	0	88,297	88,297	0	N/A	5B	0	
371	43	Transfer of MUDFA Utility Division - Section 5C - Conflict Schedule 5C/ET/D.05 - BT	09/04/2009	16/04/09 30/04/09 21/05/09 17/06/09	25.1.201/AMH/2372 25.1.201/AMH/2372 25.1.201/AMH/2372 25.1.201/AMH/2372	Y	1		I		3,4	1,357	0	1,357	0	100	238	0	1,695	666	639	VPS	2	856	
372	44	Transfer of MUDFA Utility Division - Section 5A - Conflict Schedule 5A/SPO/D.05 - Scottish Power	09/04/2009	16/04/09 16/04/09 27/05/09	25.1.201/AMH/2372 25.1.201/AMH/2372 25.1.201/AMH/2372	Y	N/A		I		3,4	0	0	0	0	0	0	0	0	0	0	VPS	2	0	
373	45	Transfer of MUDFA Utility Division - Section 4.2 - Conflict Schedule 5C/ET/D.05 - Virgin Media	03/04/2009	30/04/09 21/05/09 17/06/09	25.1.201/AMH/2372 25.1.201/AMH/2372 25.1.201/AMH/2372	Y	1		I		3,4	3,961	0	3,961	0	293	893	0	4,948	3,269	1,679	VPS	2	3,269	
374		TFC Drawing Changes - Soil Nailing and Reinforced Earth Treatment within Great Lead Hill area	24/04/2009	17/06/09	25.1.201/AMH/2372	TBA	0		M		3,4	0	0	0	0	0	0	0	0	0	0	N/A	7	0	
375		Revised OLE foundation and layout to Section1	04/04/2009	06/03/09 09/03/09 17/04/09 11/05/09 13/05/09 22/05/09 27/05/09 28/05/09 02/06/09 08/06/09 19/06/09 26/06/09	25.1.201/AMH/2372 25.1.201/AMH/2372 25.1.201/AMH/2372 25.1.201/AMH/2372 25.1.201/AMH/2372 25.1.201/AMH/2372 25.1.201/AMH/2372 25.1.201/AMH/2372 25.1.201/AMH/2372 25.1.201/AMH/2372 25.1.201/AMH/2372 25.1.201/AMH/2372	TBA	1		D		1,2,3	62,629	0	62,629	6,263	4,835	0	73,526	0	73,526	73,526	0	N/A	1A,1B,1C,1D	0
376		Redesign of OLE poles foundations due to increased loadings - Line 2	28/04/09	17/04/09 27/04/09 12/05/09 13/05/09 22/05/09 27/05/09 28/05/09 02/06/09 08/06/09 19/06/09 26/06/09	25.1.201/AMH/2372 25.1.201/AMH/2372 25.1.201/AMH/2372 25.1.201/AMH/2372 25.1.201/AMH/2372 25.1.201/AMH/2372 25.1.201/AMH/2372 25.1.201/AMH/2372 25.1.201/AMH/2372 25.1.201/AMH/2372 25.1.201/AMH/2372	TBA	1		D		1,2,3	75,018	0	75,018	7,302	5,409	0	87,729	0	87,729	87,729	0	N/A	All	0

CEC00624371_0173

ETN INFRACO NOTIFICATION of the CHANGE (INTC)
CONFIDENTIAL



Ref. No.	The Change Order Ref.	Description	Date Notified	Date of further letters	Letter Ref	Agreed in Principle?	Estimate Issued? (Y/N/0=)	Compensation Event	Type	Change Type	Pricing Method	Value Estimate (€)										Allocation of Cost	Location			
												Siemens	Bilfinger	Siemens	CAF	Subtotal	Other Prolims	Consentium Prolims	Other Prolims	Total	£ Agreed			£ Not Agreed	Number	Section
400		Cycle provision at Haymarket Steps	28/04/2009	29/05/09	25.1.201/HH/24/0 25.1.201/BOC/2761	TBA	0		M	1	1,2,3	0	0	0	0	0	0	0	0	0	0	N/A		2	0	
401		Additional earthworks to western approach embankment at Gosgarth Bridge	03/05/2009		25.1.201/BOC/2761	TBA	0		I	1	1,2,3	0	0	0	0	0	0	0	0	0	0	N/A		7A	0	
402		Addition of starter and capping layers in Section 5B	28/04/2009	04/06/09 18/06/09 23/06/09	25.1.201/IO/2452 He INF CORR 1878/TC He INF CORR 1711/AS	TBA	1		M	1	1,2	0	2,176,187	0	2,176,187	0	0	0	0	0	0	2,745,762	N/A		5B	0
403		Addition of starter and capping layers in Section 5C	28/04/2009	22/05/09 17/06/09 27/06/09	25.1.201/IO/2453 He INF CORR 1495/TC 25.1.201/ARH/2735 He INF CORR 1878/TC	TBA	0		M	1	1,2	0	0	0	0	0	0	0	0	0	0	N/A		5C	0	
404		Section 5E - Bridge Deck	07/05/2009	25/06/09	25.1.201/IO/2454 He INF CORR 1711/AS	TBA	1		M	1	1,2	0	4,463	0	4,463	0	0	0	0	0	0	5,574	N/A		5E	0
405		Additional Retaining Wall at Lower Bridge Pumping Station	11/05/2009	17/06/09	25.1.201/IO/2955 He INF CORR 1881/DC	TBA	1		M	1	1,2	0	5,410	0	5,410	0	0	0	0	0	0	6,757	N/A		1A	0
406		Geog Drain Earthworks - Northern Embankment Drainage Design	10/05/2009	26/06/09	25.1.201/IO/2956 He INF CORR 1881/DC	TBA	0		M	1	1,2	0	0	0	0	0	0	0	0	0	0	N/A		6	0	
407		Hard material within Geog excavation	12/05/2009	02/06/09 17/06/09	25.1.201/IO/2957 He INF CORR 1881/DC	Y	1		M	1	1,2,3	0	30,148	0	30,148	0	0	0	0	0	0	0	N/A		6	0
408		Hard material within Geog excavation	12/05/2009	29/06/09	25.1.201/IO/2958 He INF CORR 1881/DC	TBA	0		M	1	3,4	0	0	0	0	0	0	0	0	0	0	N/A		AI	0	
409		IFC Changes - Ductwork Specification	12/05/2009	18/06/09	25.1.201/IO/2959 He INF CORR 1876/CCN	TBA	0		M	1	1,2,3	0	0	0	0	0	0	0	0	0	0	0	N/A		AI	0
410	70	Fourth Ports - New construction at Ocean Drive	12/05/2009	27/05/09 10/06/09	25.1.201/HH/604 He INF CORR 1831/DC	Y	1		M	1	1,2,3	0	2,780	0	2,780	0	0	0	0	0	0	446	N/A		1A	2,818
411		IFC Drawing Changes - Trackform	16/06/2009		ETN(55)TIE=1A&C#053133	TBA	0		M	1	3,4	0	0	0	0	0	0	0	0	0	0	N/A		5	0	
412	46	Depot of Car - Pit for a manual bogie turntable	14/05/2009	20/05/09 21/05/09	He INF CORR 185/AR 25.1.201/HH/245	Y	1		D	1	3,4	7,593	0	7,593	0	0	0	0	0	0	0	0	N/A		7	0
413	51	Provide mesh protection of sewer at Change 711830	26/05/2009	06/07/09	SDS-JULE9130-06-LET-00142 Email - BOC-Few(Sims) Re Change Estimate	Y	1		D	1	1,2,3	1,999	0	1,999	0	0	0	0	0	0	0	0	VPS	2	7	0
414		Sample soil nailing at embankments between Russell Road and Water of Leith	15/05/2009	18/06/09 18/06/09 07/07/09	25.1.201/IO/2960 He INF CORR 1887/TC 25.1.201/ARH/3010	TBA	1		D	1	1,2,3	0	64,238	0	64,238	0	0	0	0	0	0	73,167	N/A		5A	0
415		Depot Pumping Station, materials and testing main	16/05/2009	05/05/09 09/06/09 12/06/09	25.1.201/IO/2961 He INF CORR 1856/AD 25.1.201/ARH/2945	Y	0		I	1	1,2,3	0	0	0	0	0	0	0	0	0	0	0	N/A		9	0
416	50	Construction of a new Manhole Ref. 1C2/0MP/6301	02/06/2009	08/06/09	He INF CORR 1856/AD 25.1.201/IO/2960	Y	0		I	1	1,2,3	0	0	0	0	0	0	0	0	0	0	0	N/A		1C	0
417	53	BAA Drilling Future Proofing (Eastfield Avenue)	02/06/2009	08/06/09	He INF CORR 1859/MP 25.1.201/IO/2960	Y	0		I	1	1,2,3	0	0	0	0	0	0	0	0	0	0	0	VPS	1	7	0
418		Russell Road Retaining Wall - Carry out site investigation to establish extent of contaminated material	22/05/2009		He INF CORR 1810/MSGS	Y	0		I	1	1,2,3	0	0	0	0	0	0	0	0	0	0	0	N/A		5A	0
419		Replace MASS barriers at St Andrews Square with vertical berthed build outs and infill bollards	15/05/2009	19/06/09	25.1.201/IO/2965 He INF CORR 1887/TC	TBA	1		I	1	1,2,3	0	0	0	0	0	0	0	0	0	0	24,891	N/A		1C	0
420		Trackform change on the Stuided Bypass	17/05/2009		WFN(SO)TIE=1A&C#053475	TBA	1		M	1	4	0	0	0	0	0	0	0	0	0	0	550,000	N/A		5B	0
421		Phase 1A/1B Design	22/05/2009	27/05/09	He INF CORR 1833/0S 25.1.201/BOC/2900	TBA	0		M	1	1,2,3	0	0	0	0	0	0	0	0	0	0	0	N/A		3	0
422		Remove Soft Material from Sub Grade of Deep Access Road as per CVL B&C/0007	29/05/2009	30/05/09	25.1.201/HH/2961	TBA	0		I	1	1,2,3	0	0	0	0	0	0	0	0	0	0	0	N/A		6	0
423		Remove Soft Material from Sub Grade of Deep Access Road as per CVL B&C/0007	29/05/2009		25.1.201/IO/2964	TBA	0		M	1	1,2,3	0	0	0	0	0	0	0	0	0	0	0	N/A		6	0
424		Remove Soft Material from Sub Grade of Deep Access Road as per CVL B&C/0007	30/05/2009		25.1.201/IO/2964	TBA	0		M	1	1,2,3	0	0	0	0	0	0	0	0	0	0	0	N/A		6	0
425		Remove Soft Material from Sub Grade of Deep Access Road as per CVL B&C/0007	06/07/2009		25.1.201/HH/2966	TBA	0		M	1	1,2,3	0	0	0	0	0	0	0	0	0	0	0	N/A		1A	0
426		Revisions to IFC drawings - Water of Leith Bridge	05/07/2009		25.1.201/IO/2904	TBA	0		M	1	1,2,3	0	0	0	0	0	0	0	0	0	0	0	N/A		5A	0
427		Provide insurance ducts at junctions near Prince Street	24/06/2009		He INF CORR 1894/CB	Y	0		I	1	1,2,3	0	0	0	0	0	0	0	0	0	0	0	VPS	2	10,10	0
							211					2,812,627	33,711,404	8,063,295	1,569,367	48,176,693	626,939	2,424,139	5,278,405	10,963,074	43,503,101			9,250,746		



ETN INFRACO NOTIFICATION of tie CHANGE (INTC)
CONFIDENTIAL

Withdrawn/Superseded/No Estimate
Delay Only
Client Order Issued

Ref	Tie	Change Order	Description	Date Notified	Date of further letters	Letter Ref	Agreed in Principle?	Estimate Issued? 1=Y, 0=N	Compensation Event	Type	Change Type	Pricing Method	Value Estimate (GBP)										Allocation of Cost	Section	Location	Change Order Value (BSO)
													£ Submitted (Euros) (CAF)													
													SDS	Bilfinger	Siemens	CAF	Sub-total	H & P	Consortium Prelims	Other Prelims	Total					

- Notes**
- Type
 - B: Notified Departure/Deemed tie Change
 - M: Notified Departure Mandatory tie Change
 - I: tie Instruction
 - Change Type
 - 1: tie Change
 - 2: Infraco Change
 - 3: Small Works Change
 - 4: Accommodation Works Change
 - 5: Qualifying Change In Law
 - 6: Network Expansion
 - 7: Labour & Landfill Tax Fluctuations
 - Pricing
 - 1: Schedule of Rates
 - 2: Derived Rates
 - 3: Fair Rates and Prices
 - 4: Actual Cost
 - any combination
 - Priority
 - 1: Urgent - Estimate required to allow work to commence
 - 2: Other
 - 3: Consortium Partner and Site Section
 - Allocation of Cost
 - DPS: Defined Provisional Sum
 - UPS: Undefined Provisional Sum
 - VE: Value Engineering
 - FVE: Further Value Engineering
 - N/A: None of the above

CEC00624371_0176

VALUE ENGINEERING

The following table summarises the agreed identified VE opportunities / savings which are fixed and firm reductions, save for the Key Qualifications noted.

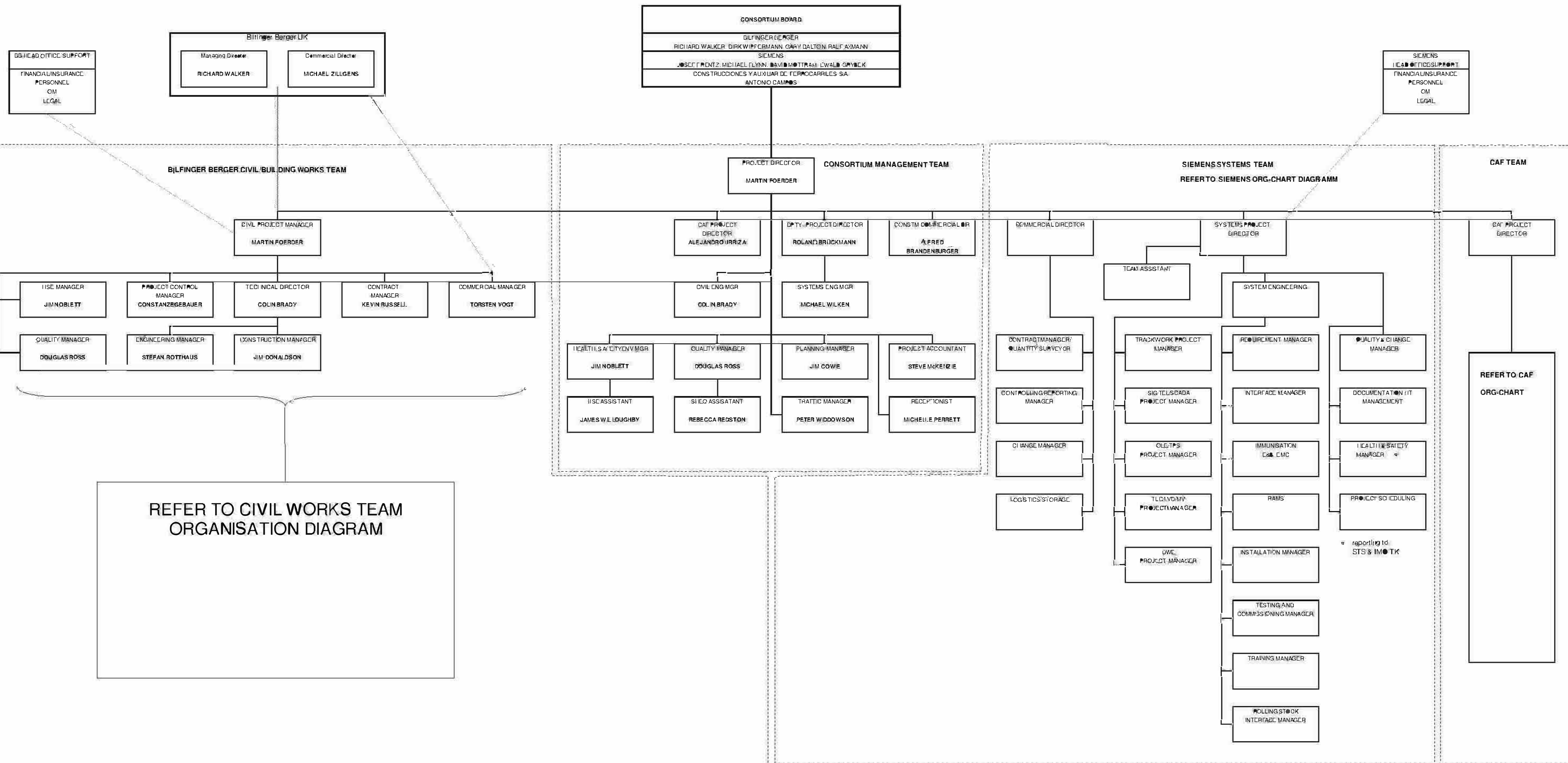
Item	Description of Identified VE Saving	£	Notes	Key Qualifications	Design To Cost (Y/N)	Tie to Instruct (Y/N)	Instructed		Further Correspondence			Costs				
							Date	Ref	Date	Ref	Description	Design Costs	Gross Saving	Net Saving	Variance	
1	Delete depot pumping station / storm tanks by utilizing existing gravity system	-193,526	tie may need to be added in cost of a small pump	Subject to tie issuing an instruction to implement the VE opportunity, tie carries specification/acceptance risk and cost of additional pump	N	Y	24/05/2008	tie-PRO_CORR_34	27/06/08 03/07/08 24/07/08 16/08/08	25.1.201/TM/183 25.1.201/JH/201 SDS-LLE90130-06-LET-00100 25.1.201/ED/260	BE>T - Confirmation to tie of SDS Instruction BE>SDS - Instruction to SDS to advise of proposals SDS>BE - Request for Design Change RUC001 Request for Increase in Contract Price	-	-	-	-	193,526
2	Build part of Depot now with provision to expand in the future / reduce size of car park facilities	-290,000	Initial supply of 100 car parking places agreed	Subject to tie issuing an instruction to implement the VE opportunity	N	Y	20/05/2008	tie-PRO_CORR_34	27/06/08 03/07/08 06/07/08 10/08/08	25.1.201/TM/183 25.1.201/JH/201 SDS-LLE90130-06-LET-00084 LLE90130-06-LET-00104	BE>T - Confirmation to tie of SDS Instruction BE>SDS - Instruction to SDS to advise of proposals SDS>BE - Deemed Client Change and EoT Request SDS>BE - Change Notice Estimate	-	-	-	-	290,000
3	Delete split vehicle accommodation system at Depot - requirement dependent on train vehicle selection	-27,500	Accommodation bodies are in Train Suppliers offer	Subject to tie issuing an instruction to implement the VE opportunity	N	Y	06/06/2008	tie-PRO_CORR_51	10/07/2008	SDS-LLE90130-SW-LET-01107	SDS>BE - Deemed Client Change and EoT Request	-	-	-	-	27,500
4	Rationalise scope requirement Track Maintenance Equipment at Depot and consider renting	-27,500		Subject to tie issuing an instruction to implement the VE opportunity	N	Y	09/06/2008	tie-HRQ_CORR_51	10/07/2008	SDS-LLE90130-SW-LET-01108	SDS>BE - Deemed Client Change and EoT Request	-	-	-	-	27,500
5	Reduction of one pavement (inner) to Depot	-36,000	Shown on latest site plan drawings	Subject to tie issuing an instruction to implement the VE opportunity	N	Y	20/05/2008	tie-PRO_CORR_34	27/06/08 03/07/08 16/08/08	25.1.201/TM/183 25.1.201/JH/201 SDS-LLE90130-06-LET-00099	BE>T - Confirmation to tie of SDS Instruction BE>SDS - Instruction to SDS to advise of proposals SDS>BE - Confirmation no additional design costs	-	-	-	-	36,000
6	Delete requirement for concrete apron to security fence at Depot	-6,000		Subject to tie issuing an instruction to implement the VE opportunity	N	Y	20/05/2008	tie-PRO_CORR_34	27/06/08 03/07/08 06/07/08 16/08/08	25.1.201/TM/183 25.1.201/JH/201 SDS-LLE90130-06-LET-00086 SDS-LLE90130-06-LET-00088	BE>T - Confirmation to tie of SDS Instruction BE>SDS - Instruction to SDS to advise of proposals SDS>BE - Request Client Notice of Change with scope of works SDS>BE - Confirmation no additional design costs	-	-	-	-	6,000
7	Brought forward £520,000 7 Consolidated VE items including those which result from changes to initial design driven by proximity to BAA runway and EARL decision as follows: - changes to initial Depot design driven by proximity to BAA runway (reduced bulk excavation) - reductions in structural loadings (gantry crane reduced in capacity and size impacting on building frame and envelope), - reduction in staff accommodation provision (reduced operational workforce reducing messing facilities, changing rooms, lockerspace, etc.) - reduction in fitout specification - reduction in domestic utility capacity (reduced building volume and	-2,200,000	Includes reductions in structural loadings (gantry crane reduced in capacity and size impacting on building frame and envelope), - reduction in staff accommodation provision (reduced operational workforce reducing messing facilities, changing rooms, lock, etc.)	Design to cost but compliant with current technical design info	Y	N	02/06/2008	tie-PRO_CORR_41	27/06/08 04/07/08 10/07/08 24/07/08	25.1.201/JH/184 25.1.201/JH/202 SDS-LLE90130-06-LET-00088 25.1.201/JH/282	BE>T - Confirmation to tie of SDS Instruction BE>SDS - Instruction to SDS to advise of proposals SDS>BE - Deemed Client Change and EoT Request BE>SDS - Referring SDS to JH/202	-	-	-	-	2,200,000
8	Delete standby generator and substitute with hot standby and power connection for portable generator	-150,000		Subject to tie issuing an instruction to implement the VE opportunity	N	Y	20/05/2008	tie-PRO_CORR_34	27/06/08 03/07/08	25.1.201/TM/183 25.1.201/JH/201	BE>T - Confirmation to tie of SDS Instruction BE>SDS - Instruction to SDS to advise of proposals	-	-	-	-	150,000
9	Material recovery and reprocessing (Infraco), 2 options - reconstituted slabs and Type 1R	-500,000		Level of saving is subject to adjustment of quantity of this item based on the final design.	N	N	27/06/2008	tie-INF_CORR_016	04/07/08 04/07/08 10/07/08 02/08/08 27/08/08 02/09/08 22/09/08 30/10/08 24/11/08	25.1.201/JH/183 25.1.201/JH/215 SDS-LLE90130-SW-LET-01111 tie-INF_CORR_016 25.1.201/GC/308 25.1.201/TM/442 tie-INF_CORR_129 tie-INF_CORR_174 25.1.201/ED/308 tie-INF_CORR_413	BE>SDS - Instruction to SDS to advise of proposals BE>T - Confirmation to tie of SDS Instruction SDS>BE - Request for Change Notice T>BE - Tie will not issue Change Order. All Reuse BE>T - Will only reuse where practical eg delay/BE BE>T - Reuse at Infraco discretion T>BE - To discuss how to remeasure at Change Meeting T>BE - 'Fixed and Firm' to the contract sum	-	-	-	-	500,000
10	Reduce kerb and associated reinstatement of pavement	-100,000		Level of saving is subject to adjustment of quantity of this item based on the final design.	N	N	27/06/2008	tie-INF_CORR_014	03/07/08 10/07/08	25.1.201/JH/196 SDS-LLE90130-SW-LET-01109	BE>SDS - Instruction to SDS to advise of proposals SDS>BE - Deemed Client Change and EoT Request	-	-	-	-	100,000
11	Reduce drainage run from guideway	-100,000		Level of saving is subject to adjustment of quantity of this item based on the final design.	N	N	27/06/2008	tie-INF_CORR_015	03/07/08 10/07/08	25.1.201/JH/197 SDS-LLE90130-SW-LET-01110	BE>SDS - Instruction to SDS to advise of proposals SDS>BE - Deemed Client Change and EoT Request	-	-	-	-	100,000

12	Einburgh Park Viaduct various savings including use of cross heads to eliminate temporary works steel or concrete beams	-1,470,000	This assumes continuation with 7 span structure	Subject to approval of NEL / CEC and subject to design to cost		Y	N	02/06/2008	tie-PRO-CORR 41	27/06/08 004/07/08 10/07/08 24/07/08 30/07/08 31/06/08 05/08/08 22/08/08 05/09/08 26/09/08 26/09/08 30/09/08 28/10/08 07/11/08 17/12/08 03/04/09	25.1.201/JH/124 25.1.201/JH/202 SDS-ULE90130-006-LET-002888 25.1.201/JH/292 25.1.201/SMCF/325 tie-INF-CORR-065 25.1.201/SMCF/348 25.1.201/CHB/401 tie-INF-CORR-133 25.1.201/JH/543 25.1.201/CHB/545 tie-INF-CORR-189 tie-INF-CORR-289 25.1.201/CHB/374 25.1.201/JH/1191 tie-INF-CORR-1195/MP	BB-T - Confirmation to tie of SDS Instruction BB-SDS - Instruction to SDS to advise of proposals BB-S-BB - Deemed Client Change and EoT Request BB-S-BB - Referring SDS to JH/202 BB-T - Advising Not Possible without Significant Delay T-BB - Stating Infracs have not complied with Contract BB-T - Infracs under 'impression' that VE was viable not viable. Consider estimate work to be unnecessary BB-T - Infracs outline current situation. Suggest non-structure redesign due to program T-BB - Tie state infracs failed to act and request proposals to minimise loss tie BB-SDS - DCI Instruction Nos 2- 4 BB-T - Infracs confirm agreement of net programme feasible T-BB - Failure to provide Estimate for Tie (Crases with letter 545) Response required Technically not feasible					1,470,000	
13	Carricknowe Bridge parapet - lowering grade from P6/P5 to N2 (reduce cost of parapet plus knock on effect on deck design / cost)	-85,000		Subject to approval of design by Network Rail		N	N	27/06/2008	tie-INF-CORR-013	03/07/08 10/07/08 30/09/08 12/01/09 26/01/09	25.1.201/JH/185 SDS-ULE90130-05-LET-00282 25.1.201/JH/555 tie-INF-CORR-289 25.1.201/JH/1387	BB-SDS - Instruction to SDS to advise of proposals SDS-BB - Deemed Client Change and EoT Request BB-T - letter to clarify position					85,000	
14	As Underpass - various initiatives	-850,000	Changing to a contiguous pile wall/leaner designs	Subject to being able to design to cost		Y	N	02/06/2008	tie-PRO-CORR 41	27/06/08 04/07/08 10/07/08 24/07/08 30/07/08 31/08/08 05/09/08 26/09/08 15/04/09 21/05/09	25.1.201/JH/124 25.1.201/JH/202 SDS-ULE90130-05-LET-00291 25.1.201/JH/292 25.1.201/SMCF/325 tie-INF-CORR-065 25.1.201/SMCF/348 25.1.201/JH/543 25.1.201/CHB/2289 SDS-ULE90130-SW-LET-01567	BB-S - Confirmation to tie of SDS Instruction BB-SDS - Instruction to SDS to advise of proposals SDS-BB - Deemed Client Change and EoT Request BB-S-BB - Referring SDS to JH/202 BB-T - Advising Not Possible without Significant Delay T-BB - Stating Infracs have not complied with Contract BB-T - Infracs under 'impression' that VE was viable not viable. Consider estimate work to be unnecessary BB-S-BB - Design Change Instruction Nos 2- 4					850,000	
15	Reaseam Street Viaduct - various initiatives	-1,375,000		Subject to approval of stakeholders - Network Rail and SRU and		N	N	20/05/2008	tie-PRO-CORR 34	20/05/08 03/06/08 27/06/08 07/07/08 10/07/08 29/07/08 30/07/08 05/08/08 22/08/08 03/09/08 02/10/08 04/10/08 04/10/08 09/10/08 22/10/08 30/10/08 06/11/08 07/11/08 13/11/08 16/11/08 17/11/08 30/01/09 09/04/09	PRO-CORR 34 25.1.201/JH/150 tie-INF-CORR-012 tie-INF-CORR-025 SDS-ULE90130-05-LET-00085 25.1.201/SMCF/284 tie-INF-CORR-065 25.1.201/SMCF/247 25.1.201/JH/396 SDS-ULE90130-05-LET-00325 25.1.201/JH/560 25.1.201/JH/601 SDS-ULE90130-05-LET-00337 25.1.201/JH/646 SDS-ULE90130-SW-LET-01233 SDS-ULE90130-05-LET-00338 tie-INF-CORR-309 25.1.201/BOC/244 25.1.201/JH/271 25.1.201/JH/271 25.1.201/BOC/244 tie-INF-CORR-401 25.1.201/JH/1441 tie-INF-CORR-1187/MP	T-BB (Received 29/05/08) Approvals (Key Qualifications) confirmation by tie BB-T - Sketch of proposals for approval by NWR, SRU and others. 5 points for approval. T-BB - ?? T-BB - Comments in T/150 do not require approval. Comments on 5 points. SDS-BB - Deemed Client Change and EoT Request BB-T - Contains SDS comments and request that VE should be 'Design to Cost' T-BB - Previous BB points not relevant. No 'Design to Cost'. Infracs to progress VE as requested BB-T - BB do not agree with T comments, enclosed provisional estimate, also BB have instructed SDS BB-SDS - Request for Design Change SDS-BB - Change Estimate = 10mths work, 342K BB-SDS - Instruction for 342K for full design BB-SDS - Reopen previous instruction. Request preliminary cost for design. SDS Assumptions and Constraints CURRENTLY UNDER REVIEW. NO SENI SDS-BB - SDS withdraw programme for DCR0024 Preliminary Design Estimate from SDS VE has been achieved Change Order requested Design Change to SDS DCI0000 tie SDS.					1,375,000	
16	Water of Leith initiatives	-150,000		Subject to being Designed to Cost		Y	N	02/06/2008	tie-PRO-CORR 41	27/06/08 10/07/08 24/07/08 30/07/08 01/08/08 05/08/08	25.1.201/JH/124 SDS-ULE90130-01-LET-00727 25.1.201/JH/292 25.1.201/SMCF/325 tie-INF-CORR-065 25.1.201/SMCF/348	BB-T - Design to Cost SDS-BB - Request for Client Notice of Change BB-SDS - Change Notice Request CR26-30 BB-S - Status report on progress for VE Nos 12, 14, 16, 17 T-BB - Non compliance of 'Design to Cost' BB-T - Reply to INF-CORR-065 and agreement to supply estimates and programmes					150,000	
17	Eight maintenance walkway structures - delete or reduce	-250,000		Subject to being Designed to Cost		Y	N	02/06/2008	tie-PRO-CORR 41	27/06/08 04/07/08 10/07/08 24/07/08 30/07/08 01/08/08 05/08/08	25.1.201/JH/124 25.1.201/JH/202 SDS-ULE90130-01-LET-01106 25.1.201/JH/292 25.1.201/SMCF/325 tie-INF-CORR-065 25.1.201/SMCF/348	BB-T - Design to Cost BB-SDS - Instruction to comply with PRO-CORR 41 SDS-BB - Request for Client Notice of Change BB-SDS - Change Notice Request CR26-30 BB-S - Status report on progress for VE nos 12, 14, 16, 17 T-BB - Non compliance of 'Design to Cost' BB-S - Reply to INF-CORR-065 and agreement to supply estimates and programmes					250,000	
18	Class 7 material conversion	-300,000		Level of savings is subject to adjustment of quantity of fill required by the final design.		N	N	18/07/2008	tie-INF-CORR-040								300,000	
19	Optimize the work site lengths wherever practical to ensure efficient construction outputs	-300,000		Subject to programme development with CEC		N	N											300,000
20	Accept more disruption over shorter period to maximize efficiency of construction operations	-100,000		Subject to programme development with CEC		N	N											100,000
21	Option to lease UPS provision from supplier rather than purchase	-300,000		Subject to agreement of Operator		N	N											300,000
22	PM integration including shared resources and colocation	-500,000		Subject to BBS / tie agreeing savings in resources and facilities terms from BBS and tie costs		N	N											500,000
23	Noise attenuation (outside of Reaseam Corridor) 3.650m of fencing	-50,000		Subject to property owners' claims		N	N	11/07/2008	tie-INF-CORR-029 SDS-ULE90130-SW-LET-01244									50,000
24	Reduce wall steel track thickness from 300mm to 200mm	-200,000				N	N	09/08/2008	tie-PRO-CORR-52	27/06/08 01/07/08 11/07/08	25.1.201/JH/124 25.1.201/JH/202 tie-INF-CORR-029	BB-T - Confirmation to tie of SDS Instruction BB-SDS - Instruction to SDS to advise of proposals T-BB - Instruction to implement items					200,000	
25	Urban Traffic Controls (UTC) associated with wider area impacts	-484,400		subject to tie issuing an instruction to implement the related Unidentified Provisional Sum at Item 6 in Table 2		N	Y	06/06/2008	tie-PRO-CORR 52	27/06/08 01/07/08	25.1.201/JH/124 25.1.201/JH/202	BB-S - Confirmation to tie of SDS Instruction BB-SDS - Instruction to SDS to advise of proposals					484,400	
		-9,985,000																

Item	Description of Initiative / Vt Saving	£	Notes	Key Qualifications	Arrivals Submitted
1	Further project management integration over 3 years	-500,000		Joint Target	
2	SDS design scope economy, variation and reduction	-500,000		Joint Target	
3	Frametops - standard finishes to circa 20% - 30% of steps	-500,000		Joint Target	
4	Picardy Place level flexing - MUDFA savings	-500,000		tie leg initiative	03/11/2008 03/12/08
5	Picardy Place level flexing - construction savings	-500,000		Joint Target	
6	Value engineer finishes on Edinburgh Park viaduct and other structures	-170,000		Subject to approval of NEL / CEC	

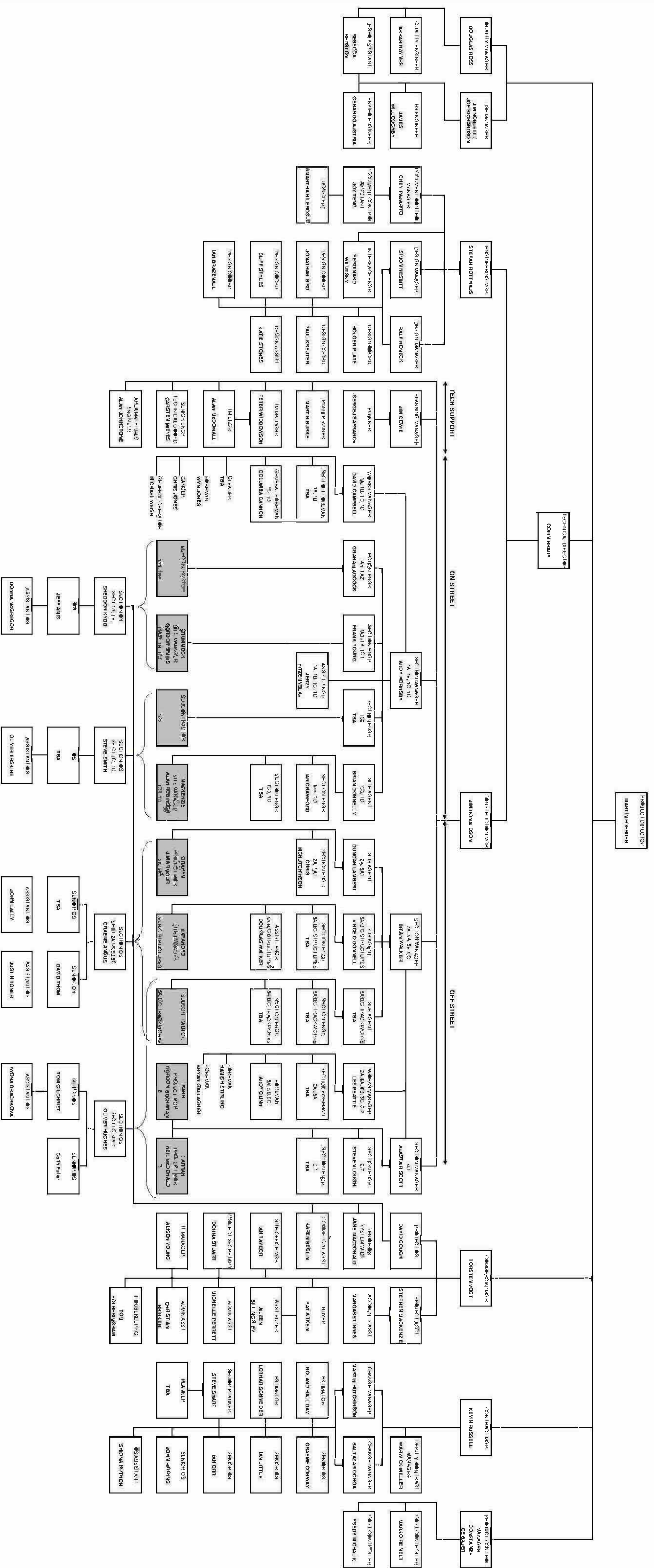
- 12,425,000

10.8 Organisation Charts



REFER TO CIVIL WORKS TEAM ORGANISATION DIAGRAM

EDINBURGH TRAM NETWORK
INFRACO ORGANISATION CHART
 REV 18 : 01/07/09



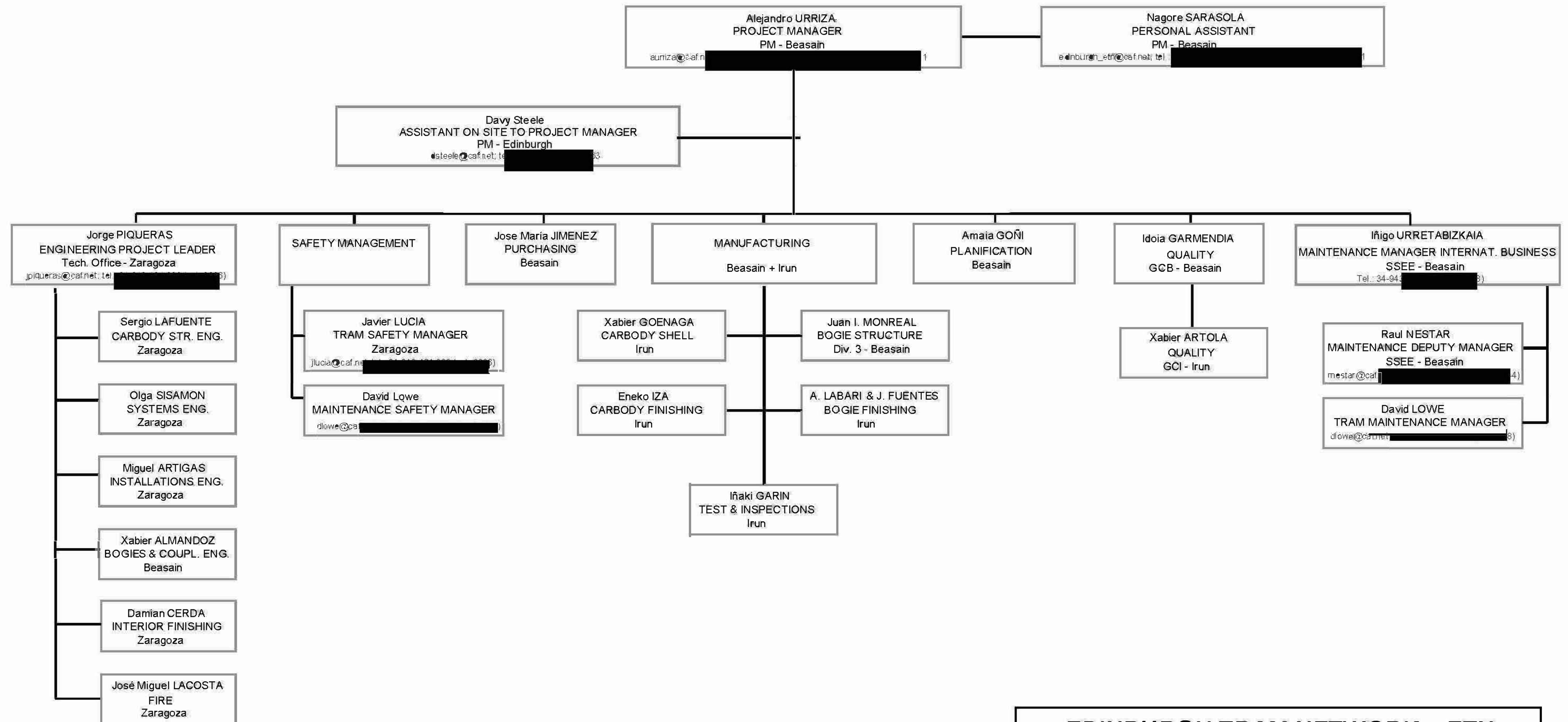
EDINBURGH TRAM NETWORK

CIVIL WORKS TEAM

REV 18 01/07/09



Construcciones y Auxiliar de Ferrocarriles, S.A.

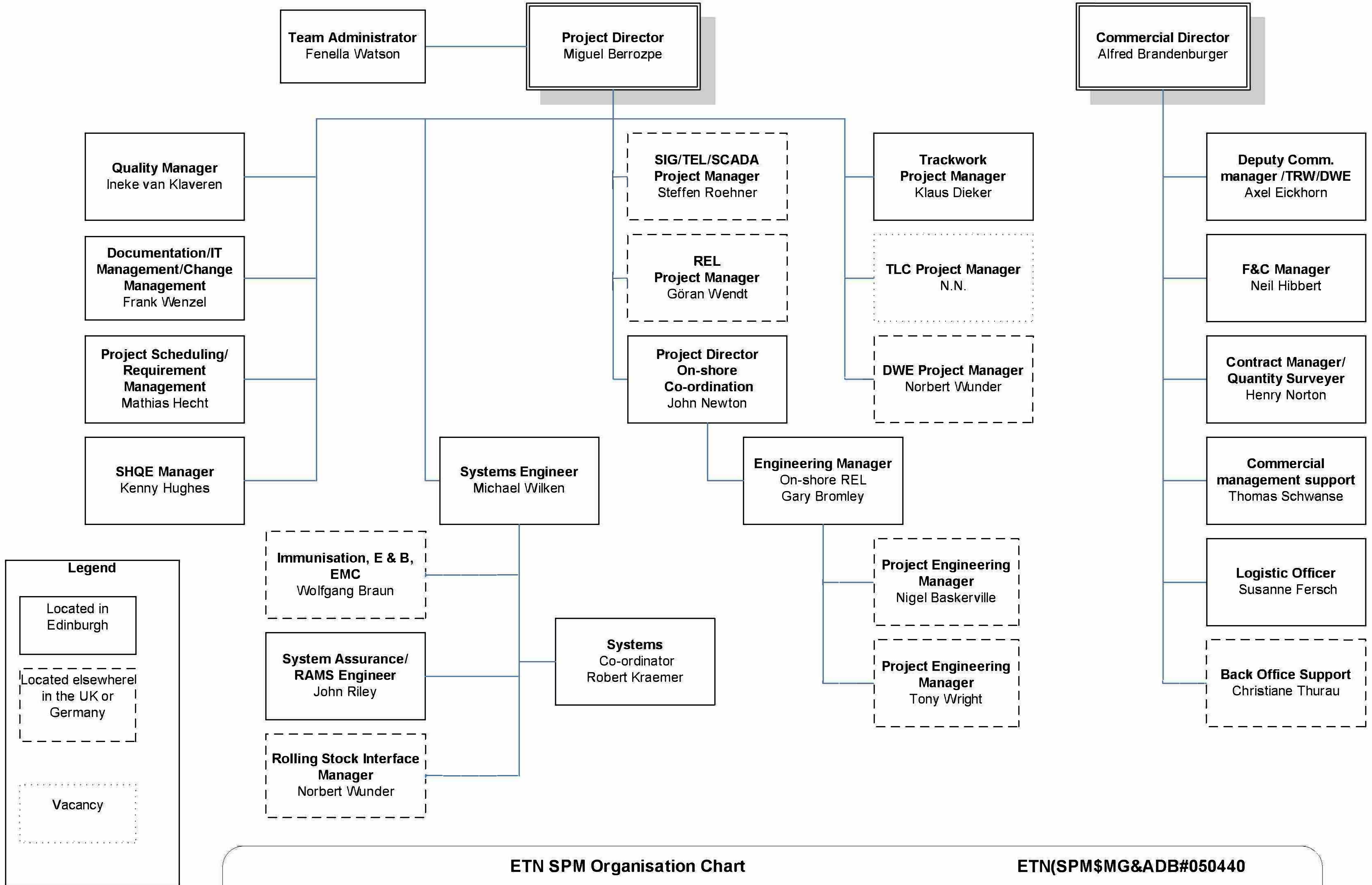


EDINBURGH TRAM NETWORK – ETN

CAF Organizational Chart – V2.2

2009/06/01

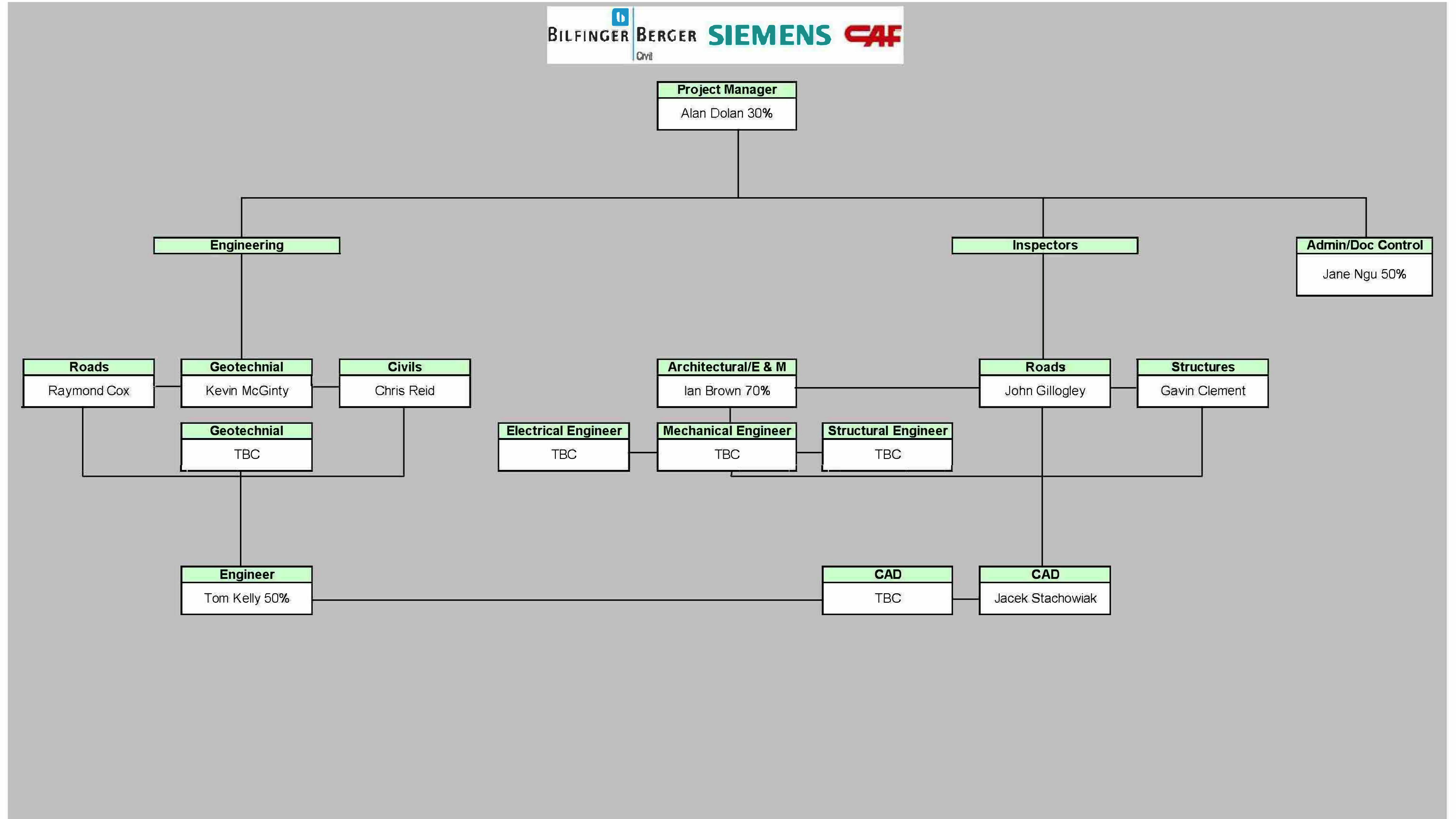
CEC00624371_0183

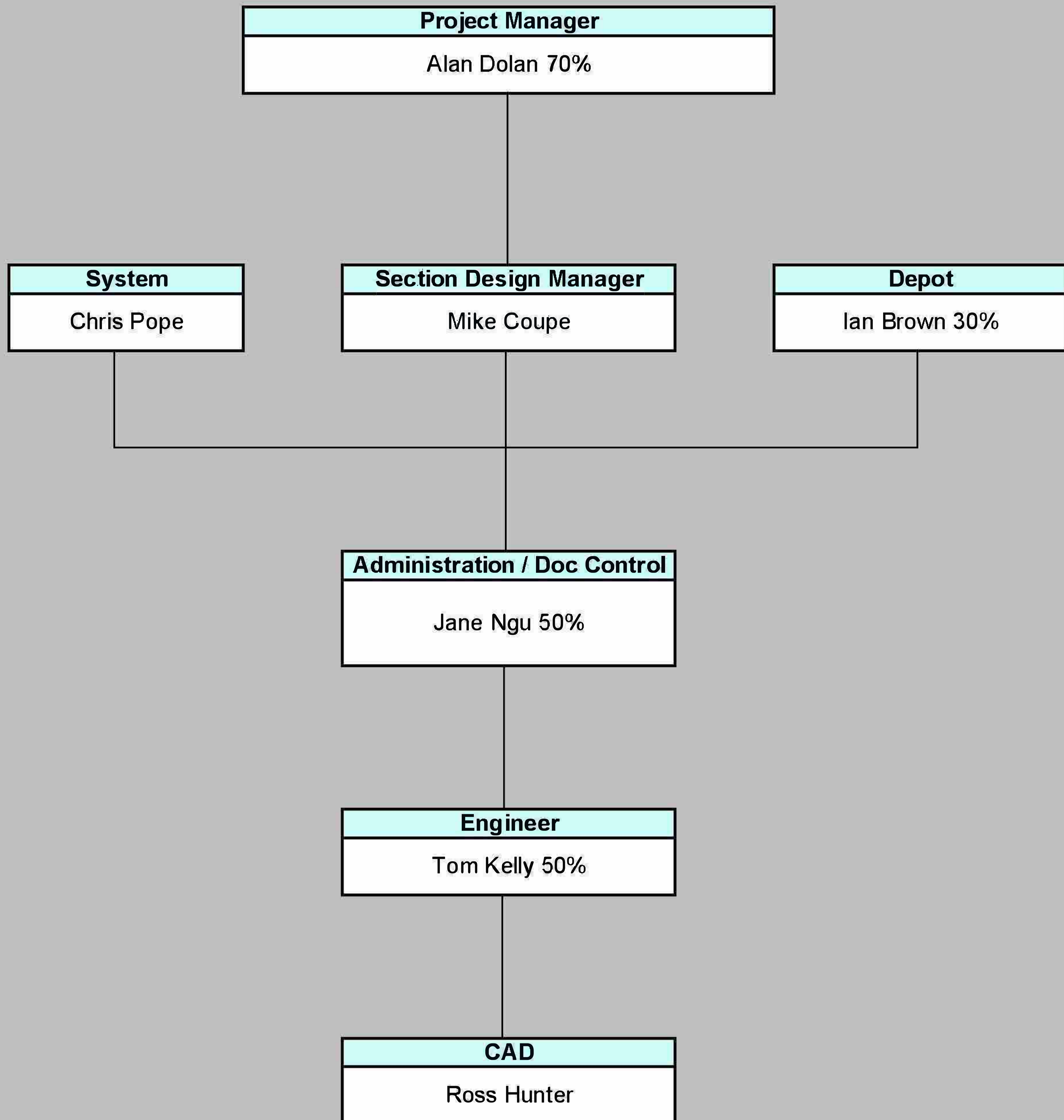


Bilfinger Berger – Siemens – CAF Consortium

10.9 Production of Design

Extended Construction Support Services - For The Period August 2009





Bilfinger Berger – Siemens – CAF Consortium

10.10 Issues and Concerns

Not Applicable