

INFORME DE AVANCE DE FABRICACIÓN
MANUFACTURING STATUS
"EDINBURGH TRAM"

UNIT	STATUS
A-8	Bodyshell fabrication. Measured
B-8	Bodyshell fabrication
C-8	Bodyshell fabrication. Measured
F-8	Bodyshell fabrication
G-8	Bodyshell fabrication
D-8	Bodyshell fabrication
E-8	Bodyshell fabrication

Signed: Idoia Garmendia
CAF Q.A.

10.5 RFI Register

Process Register

Company Bilfinger Berger Civil
 Channel ETN (<http://etn.mybiw.com>)



Status	System Ref	WorkPackage Ref	Publishing Company	Title	Content	Publishing User	Issued Date
Needs further clarification	RFI-00065	BSC-64	Siemens Transportation Systems	RFI 065 - ELECTRICITY AND METER SUPPLIER	ELECTRICITY AND METER SUPPLIER Issued 03.07.08 Response Received 10.07.08 - TRN-1544	Roland Brueckmann	24/07/2008
Needs further clarification	RFI-00074	BSC-73	Siemens Transportation Systems	RFI 074 - WASHING PLANT DESIGN	WASHING PLANT DESIGN Issued 11.07.08 Response Received 16.07.08 - TRN-01584	Norbert Wunder	24/07/2008
Needs further clarification	RFI-00075	BSC-74	Siemens Transportation Systems	RFI 075 - REQUIREMENTS FPR FLOATING SLAB	REQUIREMENTS FPR FLOATING SLAB Issued 11.07.08 Response Received 21.07.08 - TRN-01600	Robert Kraemer	24/07/2008
Needs further clarification	RFI-00077	BSC-76	Siemens Transportation Systems	RFI 077 - RE-ISSUE OF RFI 067	RE-ISSUE OF RFI 067 Issued 14.07.08 Response Received 18.07.08 - TRN-01596	Robert Kraemer	24/07/2008
Needs further clarification	RFI-00082	BSC-81	Siemens Transportation Systems	RFI 082 - TRAMSOP LIGHTING	TRAMSOP LIGHTING Issued 31.07.08	Roland Brueckmann	31/07/2008
Needs further clarification	RFI-00099	BSC-98	Siemens Transportation Systems	RFI 00099-ETN(DWE)TIE&ABC050014_Compres sed Air	Following previous versions of the ER the technical proposal for the DWE considers a Compressed Air	Robert Kraemer	15/08/2008
Needs further clarification	RFI-00100	BSC-99	Siemens Transportation Systems	RFI 00100-ETN(TRW)TIE&ABC#050020 - Value Engineering TRW	Value Engineering Opportunity – Change from Embedded track to ballasted track; Tie reference: INF_CO	Klaus Dieker	20/08/2008
Needs further clarification	RFI-00103	BSC-102	Siemens Transportation Systems	RFI 00103-ETN(SIG)TIE&ABC#050027 Timetable System	Please provide details of the tram timetable system proposed for the Edinburgh Tram project and in p	Robert Kraemer	25/08/2008
Needs further clarification	RFI-00116		Siemens Transportation Systems	Noise & Vibration Protecting Measures	During a meeting on the requirements for noise & vibration we have been informed by Tie, that co	Robert Kraemer	07/10/2008

CEC00624408_0137

Open	RFI-00156		Bilfinger Berger Civil	Section 1B	Thus ducts from chamber at approx ch 210 running to and through Jane St have not been lowered an	Frank Young	20/11/2008
Open	RFI-00162		Bilfinger Berger Civil	Section 1B Roadworks	New kerb alignment approx ch 510 - 530 runs through new BT and C&W chambers. Please advise (see	Frank Young	15/12/2008
Open	RFI-00165		Bilfinger Berger Civil	Section 1B Roadworks - high water valve	At approx ch550 RHS a water valve (currently in footpath) which is in the new road construction wi	Frank Young	06/01/2009
Open	RFI-00166		Bilfinger Berger Civil	Section 1B Roadworks - Drawpit ch474	A new electricity drawpit at approx ch 474 RHS currently on the footway but to be within carriag	Frank Young	06/01/2009
Open	RFI-00167		Bilfinger Berger Civil	Section 1B Roadworks - BT chamber ch 490	Edge of BT chamber cover at approx ch 490 LHS lies on line of new kerb. (See attached photo). Plea	Frank Young	06/01/2009
Needs further clarification	RFI-00168		Bilfinger Berger Civil	Section 1B Roadworks - ch 495 gas valve	A gas valve at approx ch 495 RHS will foul the new kerb line (see attached photo). Please advise	Frank Young	06/01/2009
Open	RFI-00169		Bilfinger Berger Civil	Section 1B Roadworks - C&W chamber north radius Crown Place	A new chamber for C&W on the north radius of Crown Place, approx ch110, is fouling the new kerblin	Frank Young	06/01/2009
Open	RFI-00170		Bilfinger Berger Civil	FW:Section 1B Roadworks - ch399 jointing chamber	New chambe	Frank Young	07/01/2009
Open	RFI-00171		Bilfinger Berger Civil	Section 1B Roadworks - FH ch405 RHS	New fire hydrant at ch 405 RHS currently in footway has only120mm cover to spindle but will be in	Frank Young	08/01/2009
Open	RFI-00172		Bilfinger Berger Civil	Section 1B Roadworks -FHs ch446	2 No fire hydrants (1 old, 1 new ?) currently on footway but to be in new carriageway only have 85	Frank Young	09/01/2009
Open	RFI-00173		Bilfinger Berger Civil	Section 1B Roadworks - ch506 FH	Fire hydrant currently in footway but to be in new carriageway only has 80mm cover from current po	Frank Young	09/01/2009
Open	RFI-00174		Bilfinger Berger Civil	Section 1B Roadworks ch 592 drawpit	Drawpit fouling new kerb line at ch592 LHS (see attached photo). Please advise	Frank Young	09/01/2009
Open	RFI-00180		Bilfinger Berger Civil	Section 1B Roadworks - ch 625 RHS BT chamber	The new BT chamber built at ch625 RHS fouls the new kerblin and ducts exiting to the road will ha	Frank Young	14/01/2009
Needs further clarification	RFI-00181		Bilfinger Berger Civil	Section 1B Roadworks - ch 882 BT chamber	BT chamber at ch 882 RHS clashes with new kerblin and ducts exiting across carriageway will only	Frank Young	14/01/2009
Open	RFI-00182		Bilfinger Berger Civil	Section 1B Roadworks - ch710RHS water valve	Valve on new water main at ch 710 RHS lies on new kerblin (see attached photo). Please advise	Frank Young	14/01/2009
Needs further clarification	RFI-00183		Bilfinger Berger Civil	Section 1B Roadworks - ch900 LHS valve	New valve on water main approx ch 900 LHS clashes with new kerblin (see attached photo). Please a	Frank Young	14/01/2009
Needs further clarification	RFI-00184		Bilfinger Berger Civil	Section 1B Roadworks - ch 890 valve	New valve on water main approx ch 890 LHS clashes with new kerblin (see attached photo). Please a	Frank Young	14/01/2009
Needs further clarification	RFI-00185		Bilfinger Berger Civil	Section 1B Roadworks - ch 210 LHS valve	Water valve at ch 210 LHS currently in footway but will be in new carriageway has only approx 120m	Frank Young	14/01/2009
Needs further clarification	RFI-00186		Bilfinger Berger Civil	Section 1B Roadworks - ch 530 RHS drawpit	Existing chamber at approx ch 530 RHS clashes with new kerblin (see attached photos). Please advi	Frank Young	14/01/2009
Open	RFI-00188		Bilfinger Berger Civil	Section 1B Roadworks ch110602	Water valve/toby clashes with new kerblin at ch 110602 LHS (see attached photo). Please advise	Frank Young	20/01/2009
Open	RFI-00189		Bilfinger Berger Civil	Section 1B Roadworks ch110100	Water valve/toby clashes with new kerblin at ch 110100 (see attached photo)./ Please advise	Frank Young	20/01/2009
Open	RFI-00190		Bilfinger Berger Civil	Section 1B Roadworks	Water valve/toby at ch111106 LHS clashes with new kerblin (see attached photo). Please advise	Frank Young	20/01/2009
Open	RFI-00191		Bilfinger Berger Civil	Section 1B Roadworks ch111151	BT chamber at ch111151 LHS clashes with new kerblin (see attached photo). Please advise	Frank Young	20/01/2009

Open	RFI-00192		Bilfinger Berger Civil	Section 1B Roadworks ch111095	New fire hydrant and 2 valves clash with new kerbline at approx ch 111095 RHS (see attached photo)	Frank Young	20/01/2009
Open	RFI-00197		Bilfinger Berger Civil	Section 1B Roadworks ch 111150	New water mains at Leith Walk Railway Bridge are completely within pavement make up. Please advise	Frank Young	20/01/2009
Open	RFI-00211		Bilfinger Berger Civil	Section 1B Roadworks	At approx ch 125 RHS - Casselbank St an old steel pipe has been connected to new BT ducting immedi	Frank Young	03/03/2009
Needs further clarification	RFI-00213		Bilfinger Berger Civil	Section 7A - As Built Utility Information	Please provide as built utility information in Section 7A from Culvert 3 location to Airport.	Simon Nesbitt	03/04/2009
Needs further clarification	RFI-00215		Siemens Transportation Systems	TRAMSTOP CABINET KEY SUITE SYSTEM INFORMATION	Can TIE please provide the following:- •Type of key required for Tramstop Cabinet lock to equip	Michael Wilken	06/04/2009
Needs further clarification	RFI-00217		Siemens Transportation Systems	Radio system configuration	Further to the ORR Prelim design review and in particular the requirements for "radio to control c	Michael Wilken	06/04/2009
Needs further clarification	RFI-00218		Siemens Transportation Systems	Ingliston Park and Ride existing CCTV cameras.	Section 35.9.1 of the ER (issue 4) states that "The ODN also needs to allow for 7 existing, plus t	Michael Wilken	06/04/2009
Needs further clarification	RFI-00219		Siemens Transportation Systems	Facilities to be provided at emergency/backup control room?	Section 35.11.1 of the ER states "The ODN shall support the emergency relocation of Control Centre	Michael Wilken	06/04/2009
Needs further clarification	RFI-00222		Siemens Transportation Systems	Lift operation at Murrayfield tramstop.	Section 35.8.1 of the ER (issue 4) states "Each Tramstop platform shall be equipped with at least o	Michael Wilken	06/04/2009
Needs further clarification	RFI-00223		Siemens Transportation Systems	Additional PHP call handler?	Within the Railcom Manager Outline Design review item 4.8 states "PHP call responses. In times of	Michael Wilken	10/04/2009
Needs further clarification	RFI-00239		Siemens Transportation Systems	Provision of timetable and timetable data	Please would tie provide to BSC an initial operational timetable including: 1. 'Compulsory' and	Michael Wilken	15/06/2009
Needs further clarification	RFI-00240		Siemens Transportation Systems	Definition of user categories for Control Centre	During the Signalling Design Review Meeting on 24 March 2009 it has been agreed that tie/Transdev	Michael Wilken	15/06/2009
Needs further clarification	RFI-00241		Bilfinger Berger Civil	Russell Road Retaining Walls, Site Investigation Testing Requirements (TNC 076)	Further to the email from our Graeme Angus to your M. Paterson relating to TNC 076 on 04/06/09 at	Duncan Lambert	29/06/2009
Needs further clarification	RFI-00242		Siemens Transportation Systems	Lightning Protection of Depot Main Workshop building	The Employer's Requirements list BS 6651:1999 "Code of Practice for protection of structures again	Michael Wilken	07/07/2009
Needs further clarification	RFI-00243		Siemens Transportation Systems	Location of playback facilities within Gogar Depot?	Section 35.14.13 of the Employer's Requirements (issue 4) states that "The system shall provide pl	Michael Wilken	07/07/2009
Needs further clarification	RFI-00244		Siemens Transportation Systems	Colour of cable sheaths for Earth bonds	Can Tie please specify the required cable sheath colour for earth bonds used at tramstops for b	Michael Wilken	08/07/2009
Open	RFI-00247		Bilfinger Berger Civil	North St Andrews St - Scottish Power - MUDFA issue	Please provide as built of diverted Scottish Power utility that is within the utility clearance zon	Simon Nesbitt	12/08/2009
Open	RFI-00248		Bilfinger Berger Civil	MH AND CHAMBERS PRINCES STREET	See drawing attached. 1/ A existing MH lies on the path of the outbound tram line. During excava	Graham Adcock	12/08/2009
Open	RFI-00249		Bilfinger Berger Civil	UTILITY DUCTS AND CLEARANCE ZONE	See attached Drawing. Points 5 and 6 are the centre of utility ducts within the utility clearance	Graham Adcock	12/08/2009

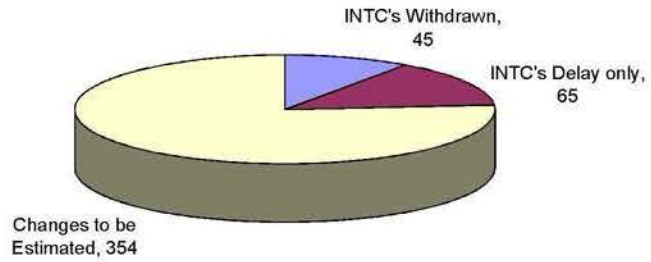
10.6 Civil Works Procurement Schedule

Subcontract Procurement / Register Contract : Edinburgh Tram Network				BILFINGER BERGER UK Limited								PROCESSES											
Enquiry Ref Number	Subcontract Trade	Section	Company	Prospective Companies	IG	PROGRAMME REQUIREMENTS						PROCESSES											
						Enquiry Needs Sent Out By (F74-3)	Status	Order Needs Placed By	Status	Letter of Intent Issued / Limited Order to Proceed	Required for Start on Site	Design Package Issued for Construction	F74-1 Subcontract Questionnaire	F519-1 Subcontract Questionnaire	F74-4 Pre-Award Start Meeting	F74-5 Quality Plan	Authority to Place	C128.2 Approval	F74-9 Subcontract Performance Appraisal	Order Issued	Order Back	F74-11 Subcontract Review	F74-2 Subcontract Review
1	Land Surveys (SW)	SW	Becker Geomatics Ltd		KB	n/a	✓	n/a	✓		n/a	n/a	✓					n/a	✓	✓	✓		
2	Tree Felling / Advance Works (SW)	SW	W Laing		JT	n/a	✓	n/a	✓		n/a							n/a	✓	✓	✓		
3	Site Clearance / Civils Package (7A)	7A	Farrans (Construction) Ltd		DG	n/a	✓	n/a	✓		n/a		✓	✓				n/a	✓		✓		
4	Setting Out Engineers / Advance Works	SW	Beattie Chalmers Ltd		JT	n/a	✓	n/a	✓		n/a		n/a					n/a	✓	✓	✓		
5	Demolition of Caley Alehouse	2A	John Graham (Dromore) Ltd		DG	n/a	✓	n/a	✓		16-Jun-08		✓	✓				n/a	✓		✓		
9	Existing Road Surveys	SW	Mouchel		KB	n/a	✓	n/a	✓		23-Jun-08		✓					n/a	✓		✓		
10	Erection of Temporary Trackside Fencing	5	Lumberjax Environmental		JT		✓		✓		21-Jun-08				✓			n/a	✓	✓	✓		
11	Civils Package	7A/5C		Farrans	DG	16-Jun-08		26-Jul-08		08-Aug-08	04-Aug-08		✓	✓	✓			✓				✓	
12	Civils Package	2A1D5A		John Graham (Dromore) Ltd	GA	23-Jun-08		21-Jul-08			02-Mar-09												
14	Advisory Services	SW	Hill International UK Ltd		KB																		
17	Temporary Works Design	SW	Tony Gee		TG	12-May-08	✓	23-Jun-08		30-Jun-08	n/a		✓	✓				n/a	✓			✓	
18	Formwork, Rebar, Concrete	5	Expanded Ltd		GA	23-Jun-08	✓	21-Jul-08		29-May-09	18-Aug-08		✓	n/a				✓					
20	PC Beams	5	Banagher		TG	23-Jun-08	✓	20-Oct-08	✓		01-Dec-08												
21	Site Clearance	5	Edinburgh Woodland		JT	04-May-09	✓	19-May-09	✓	n/a	25-Jun-09				✓					✓	✓	✓	
24	Photography	SW	White House Studios		KB	04-Jun-08	✓	16-Jul-08	✓	n/a	23-Jul-08		✓	n/a	✓	n/a		n/a	n/a	✓	✓	✓	
25	Structural Steel	5	Fairfield Mabey		GA	Jan 08	✓			26-Jun-08	01-Dec-08	28-Jul-08	✓	n/a	✓	✓						✓	
26	Traffic Management (SW)	SW	Class One		TG		✓	22-Jul-08		22-Jul-08	05-Aug-08		✓	✓	✓	✓							
27	Timber Fencing	SW		G Walker, JKF, DE Fencing, Lumberjacks, Alter	TG		✓																
30	Deck waterproofing & Surface Treatment	SW		Universal Sealants, Pitchmastic, Stirling Loyd	DG																		
31	Metal railings and handrailing	SW		DE Fencing, JKF	DG																		
34	Designers	SW	Parsons Brickerhoff		KB													n/a					✓
38	Civils Package	6	Barr Ltd		DG	26-May-08	✓	07-Jul-08	✓	02-Jun-08	04-Aug-08		✓		✓			✓		✓	✓		
42	Property Conditions Survey	SW		DM Hall / PT / DTZ	DG																		
44	Site Investigation Works	5	Raeburn		JT	02-Jun-08	✓	30-Jun-08		n/a	07-Jul-08				✓	n/a				✓	✓	✓	
45	Civils Package	1B	Crummock		DG	04-Aug-08	✓	10-Oct-08		10-Sep-08	06-Oct-08	07-Jul-08	✓	✓	✓	✓	✓	✓	✓	✓	✓	✓	
46	Civils Package	1D	MacKenzie		DG	04-Aug-08	✓	27-Oct-08		17-Dec-08	05-Jan-09	04-Jul-08	✓	✓	✓	✓	✓	✓	✓	✓	✓	✓	
48	Control Network Survey Check - Site Wide		L & M Surveys		KB	03-Jul-08	✓	14-Jul-08		n/a	14-Jul-08		✓	n/a	✓	n/a		n/a	✓	✓	✓	✓	
49	Utility Diversions	SW		Core Construction, Clancy Doowra, Intuto	DG	14-Jul-08	✓																
53	Acoustic Monitoring	SW	RMP Acoustic Consultants		KB	n/a		20-Jul-08	✓		27-Jul-08		✓	✓	✓			n/a		✓	✓	✓	
55	Tree Felling Adjacent to NR Rail Network		W Laing		KB	17-Jul-08	✓	11-Aug-08	✓	n/a	25-Aug-08				✓					✓	✓	✓	
58	Ecologist	SW	JDC Ecology Ltd		KB										✓					✓	✓	✓	
65	Supply of CRE	SW	Siemens TS		SK	n/a		n/a	✓	n/a	n/a		n/a	n/a	n/a	n/a		n/a	n/a	✓	✓	✓	
70	Groundworks	5	Gallagher Groundworks		SK	25-Jul-08	✓	04-Aug-08	✓	n/a	11-Aug-08							n/a		✓	✓	✓	
73	Edinburgh Park Hoarding	5	Rapid Hoard Ltd		JT	01-Aug-08	✓	15-Aug-08	✓	n/a	29-Aug-08		✓	✓	✓			n/a		✓	✓	✓	
74	A8 Underpass	5	Expanded Piling Ltd		GA	06-Aug-08	✓	03-Sep-08	✓	15-Sep-08	15-Sep-08		✓	✓	✓	✓	✓	✓	✓	✓	✓	✓	
77	Temporary Traffic Signals	SW			DG					n/a	02-Oct-08		n/a					n/a					
80	Welding Services		Andrew Turner		JA	n/a		19-Sep-08	✓	n/a	23-Sep-08		n/a	n/a	n/a	n/a		n/a	n/a	✓	✓	✓	
81	Edinburgh Park Structure	5	Expanded Structures Ltd		GA	03-Oct-08	✓	n/a		05-Nov-08	Nov 08		✓	n/a	✓		✓	✓	✓			✓	
82	Japanese Knotweed Eradication	5	TCM Ltd		GA	16-Sep-08	✓	n/a	✓	30-Sep-08	20-Oct-08		✓	n/a	✓	n/a			✓	✓	✓	✓	
84	Site Clearance	5	D Methuen Turnstone Ltd		JT	n/a		15-Sep-08	✓	n/a	16-Sep-08				✓	n/a		n/a		✓	✓	✓	
85	Traffic Management Design		Faber Maunsell		SK	12-Sep-08	✓	08-Oct-08	✓	n/a	10-Oct-08				✓				✓	✓	✓	✓	
86	Steel Foundations	S27	Steel Foundations Ltd		DT					14-Oct-08	15-Oct-08		✓	n/a	✓		✓	✓	✓	✓	✓	✓	

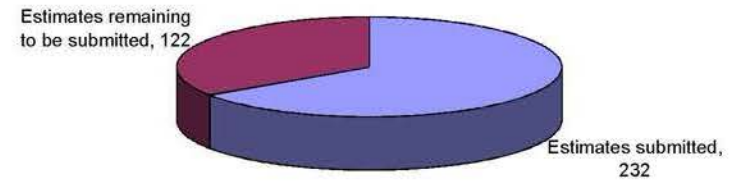
Subcontract Procurement / Register Contract : Edinburgh Tram Network				PROGRAMME REQUIREMENTS								PROCESSES							
Item No	Description	Code	Contractor	Start	End	Start	End	Start	End	Start	End	Start	End	Start	End	Start	End		
87	Temporary Sheet Piling Carrick Knowe	S23	McGrattan Piling Ltd	DT	06-Oct-08	✓	20-Oct-08	05-Nov-08	20-Nov-08	✓	n/a	✓			✓		✓		
88	Civils Package	1A1	Included in 89	SK	03-Oct-08	✓				✓	n/a				✓				
89	Civils Package	1A2	McKean	SK	03-Oct-08	✓	02-Sep-09	10-Jun-09	13-Jul-09	✓	n/a				✓				
90	W1, S16, S17 - Structures	1A	Included in 89	SK	03-Oct-08	✓				✓	n/a				✓				
91	Temporary Traffic Signals		Lochwynd	SK			21-Nov-08	✓	12-Dec-08	✓	n/a		✓	✓	✓	✓	✓		
95	Site Clearance	5B / 5C	MW Groundworks Ltd	JT	28-Nov-08	✓	12-Dec-08	n/a	22-Dec-08	✓	n/a	✓	n/a		✓	✓	✓		
96	Fencing to Consortium Office		William Houston Landscaping	JT	19-Dec-08	✓	16-Jan-09	n/a		✓	n/a	n/a		✓	✓	✓	✓		
100	Temporary Traffic Signals	1	Siemens Traffic Controls	SK			✓	09-Jan-09	10-Jan-09	n/a	n/a	n/a	n/a	✓	✓	n/a	✓		
101	Amendments to Existing Traffic Signals	1	Telent	SK	n/a		19-Jan-09	✓	n/a	26-Jan-09	✓	n/a		✓	n/a	✓	✓		
102	Amendments to Existing Traffic Signals	1	Peek	SK	n/a		19-Jan-09	✓	n/a	26-Jan-09	✓	n/a	n/a	✓	✓	n/a	✓		
104	Civils Package	1C2	RJ McLeod, Barr Ltd, McKean, Land Engineering, Malcom Group, WJ Harle	SS							n/a								
107	A8 Underpass Sheet Piling	5C	McGrattan Piling Ltd	DAT	01-Nov-08		16-Mar-09	✓	05-Mar-09	06-Apr-09	✓		✓	✓			✓		
	Section 5 Civils	5	McKean, DCT, Dunnes, Expanded, Farrans, Malcolms	DAT	30-Nov-08		13-Jul-09												
	Tramstop Shelters & Ancillary Equipment	SW	Broxap, McGrath, RWS, Clearchannel, Macemain	SK	01-Mar-09	✓				✓	n/a								
108	Substation Prefab Buildings	SW	Gladson, Portastor	SK	01-Mar-09	✓				✓	n/a								
109	Streetlighting	SW	BEAR, Harle, Pegasus, SBContracts, Lightways, Edminston & Brown, Onion	SK	17-Jul-09	✓					n/a								
110	Temporary Lighting	5B	City of Edinburgh Council	JL	02-Jun-09	✓	13-Jul-09	26-Jun-09	27-Jun-09	✓	n/a				✓				

10.7 Change Register

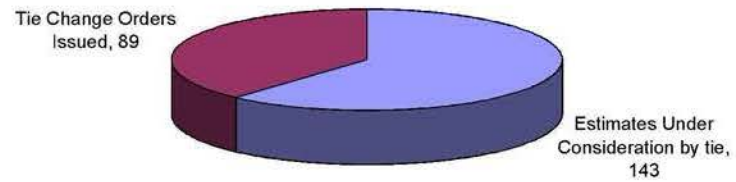
**Overall Changes (TCN's & INTC's)
Total 464**



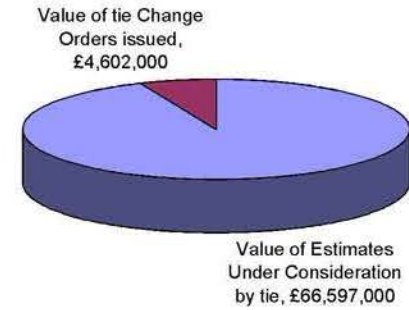
**Overall Estimates (TCN's & INTC's)
Total 354**



**Overall Estimates (TCN's & INTC's) submitted and Tie Change Orders Issued
Total 232**



Value of TCN's & INTC's submitted VS Tie Change Orders Issued



ITN INFRACO NOTIFICATION OF THE CHANGE (NTC)

CONFIDENTIAL

Westminster@infra.co.uk

Ref.	Id.	Use Change Order (LCO)	Description	Date Notified	Date of further letters	Letter Ref	Agreed in Principle?	Change Impact		Change Method	SOS	Value Estimate (GBP)						Allocation of Cost	Change Order Sections (See Note 1)		
								Impact	Type			Subtotal	Other P.P.	Construction	Other Prisms	Total	1.000			1.000	1.000
9			Work to be completed by currently ongoing in the area of... Order Transmittal is delayed and disrupting the infra in... the Station 7	20/05/2020	02/06/20 11/06/20 15/06/20 27/06/20	SE-1307/PM143 SE-1307/PM143 SE-1307/PM143 SE-1307/PM143	TBA	N/A	M	1	0	0	0	0	0	0	0	N/A	7	0	
10			Work to be completed by currently ongoing in the area of... Order Transmittal is delayed and disrupting the infra in... the site offices for Section 5C	20/05/2020	02/06/20 04/06/20 15/06/20 27/06/20	SE-1307/PM143 SE-1307/PM143 SE-1307/PM143 SE-1307/PM143	TBA	N/A	M	1	4	0	0	0	0	0	0	0	N/A	5C	0
11			Work to be completed by currently ongoing in the area of... Order Transmittal is delayed and disrupting the infra in... the site offices for Section 5C	20/05/2020	02/06/20 11/06/20 15/06/20 27/06/20	SE-1307/PM143 SE-1307/PM143 SE-1307/PM143 SE-1307/PM143	TBA	N/A	M	1	4	0	0	0	0	0	0	0	N/A	5C	0
12			The QUANGD technology is currently ongoing in the area of... Order Transmittal is delayed and disrupting the infra in... the site offices for Section 5C	20/05/2020	02/06/20 11/06/20 15/06/20 27/06/20	SE-1307/PM143 SE-1307/PM143 SE-1307/PM143 SE-1307/PM143	TBA	N/A	M	1	4	0	0	0	0	0	0	0	N/A	7	0
13			Work to be completed by currently ongoing in the area of... Order Transmittal is delayed and disrupting the infra in... the site offices for Section 5C	20/05/2020	02/06/20 11/06/20 15/06/20 27/06/20	SE-1307/PM143 SE-1307/PM143 SE-1307/PM143 SE-1307/PM143	N/A	N/A	D	0	1	0	0	0	0	0	0	0	N/A	ALL	0
14			Work to be completed by currently ongoing in the area of... Order Transmittal is delayed and disrupting the infra in... the site offices for Section 5C	20/05/2020	02/06/20 11/06/20 15/06/20 27/06/20	SE-1307/PM143 SE-1307/PM143 SE-1307/PM143 SE-1307/PM143	TBA	N/A	M	1	4	0	0	0	0	0	0	0	N/A	6	0
15			Work to be completed by currently ongoing in the area of... Order Transmittal is delayed and disrupting the infra in... the site offices for Section 5C	20/05/2020	02/06/20 11/06/20 15/06/20 27/06/20	SE-1307/PM143 SE-1307/PM143 SE-1307/PM143 SE-1307/PM143	TBA	N/A	M	1	4	0	0	0	0	0	0	0	N/A	6	0
16			Work to be completed by currently ongoing in the area of... Order Transmittal is delayed and disrupting the infra in... the site offices for Section 5C	20/05/2020	02/06/20 11/06/20 15/06/20 27/06/20	SE-1307/PM143 SE-1307/PM143 SE-1307/PM143 SE-1307/PM143	TBA	N/A	M	1	4	0	0	0	0	0	0	0	N/A	6	0



ETN INFRACO NOTIFICATION of the CHANGE (INTC) CONFIDENTIAL		Value Estimate (000£)										Allocation of Cost		Location		Change Order Value (BSC)											
Ref	Ref. No.	Use Change Order TCO	Description	Date Notified	Date of Further Notice	Letter Ref	Agreed in Principle?	Estimate Issued? Y/N/ Q/N	Type See Notes	Change Type See Notes	Pricing Method See Notes	£ Submitted (Series 1 CAF)							£ Agreed	£ Not Agreed	Sum of VE	Number	Section See Notes	Change Order Value (BSC)			
												Bilfinger	Siemens	CAF	Subtotal	OH & P	Contingency Premium	Other Premium	Total								
17			Notified Departure in accordance with paragraph 3.4.5.1 and 3.5 Schedule Part 4 due to conflict with the 1500mm dia Deep sewer under the MUDFA Contract with the South Cycle Access Bridge west abutment pier foundation potentially causing delay and disruption to the Infraco's intended programme	20/06/2008	15/06/08 02/06/08 11/06/08 13/06/08 22/06/08 27/06/08 10/07/08 25/07/08 05/08/08 09/08/08 25/08/08 27/08/08 30/08/08 16/09/08 02/10/08 09/10/08 23/10/08 29/10/08 29/10/08 05/11/08 10/11/08 13/11/08 03/12/08 12/12/08 10/12/08 07/01/09 12/01/09 30/01/09	See Memoirs of Meeting 25.1.2017/M143 See PRO CORR 40 25.1.2017/M152 See PRO CORR 73 25.1.2017/M188 See PRO CORR 104 SDS-ULE9030-06-LET-0009 25.1.2017/H208 SDS-ULE9030-06-LET-0038 25.1.2017/H207 See INF CORR 115 25.1.2017/H227 25.1.2017/M147 See INF CORR 183 25.1.2017/M148 25.1.2017/H272 SDS-ULE9030-SW-LET-0126 25.1.2017/H175 25.1.2017/M1750 See INF CORR 202 25.1.2017/H182 25.1.2017/H269 25.1.2017/H269 See INF CORR 211 See INF CORR 406 25.1.2017/H1140 See INF CORR 537 25.1.2017/M17247 See INF CORR 679 SDS-ULE9030-SW-LET-0136	N/A	N/A	D	4	0	0	0	0	0	0	0	0	0	0	0	0	0	0	N/A	5C	0
17a			Notified Departure in accordance with paragraph 3.4.5.1 and 3.5 Schedule Part 4 due to conflict with the 1500mm dia Deep sewer under the MUDFA Contract with the South Cycle Access Bridge west abutment Pierced with Design for Option 4	03/02/2009	10/02/09 10/02/09 20/02/09 24/02/09 24/02/09 27/02/09 05/03/09 06/03/09 18/03/09 24/03/09 07/04/09 14/04/09 05/05/09 07/05/09 08/05/09 12/05/09 14/05/09 18/05/09 22/05/09 29/05/09	25.1.2017/H1459 25.1.2017/H2158 SDS-ULE9030-SW-LET-01382 See INF CORR 788 25.1.2017/H2121 25.1.2017/H1742 See INF CORR 795 25.1.2017/H2100 See INF CORR 882 25.1.2017/H21974 SDS-ULE9030-SW-LET-01476 See INF CORR 11367C 25.1.2017/H2277 SDS-ULE9030-SW-LET-01638 25.1.2017/H2074 SDS-ULE9030-SW-LET-01547 25.1.2017/H2003 See INF CORR 1461DC 25.1.2017/H2851C See INF CORR 14967C 25.1.2017/H27977	TBA	I	D	1	4	61,843	0	0	0	61,843	-6,184	4,676	0	72,604	0	72,604	N/A	5B	0		
18			Notified Departure in accordance with paragraph 3.4.5.1 and 3.5 Schedule Part 4 due to the MUDFA Contractor not having completed the various Safety Operations in the Depot area in accordance with the requirements of the Programme causing delay and disruption to the Infraco's intended sequence. Site Offices and Compound	30/05/2008	18/04/08 05/05/08 05/05/08 13/05/08 22/05/08 06/06/08 09/06/08 11/06/08 13/06/08 19/06/08 19/06/08 27/06/08 01/07/08 17/07/08 28/07/08 05/08/08 03/12/08 18/12/08 07/01/09 09/05/09 15/05/09	See PRO INFRACO 20378B BB&E Email BB Email - site establishment See PRO Infra 2038 BB&E Email Depot 25.1.2017/M145 See PRO CORR 50 BB&E Email 25.1.2017/M154 See INF CORR 003 BB&E Email - 8 B&B&E Email 25.1.2017/M188 & BB&E Email 25.1.2017/M190 Siemens Proposal Email 25.1.2017/M206 See INF CORR 074 25.1.2017/M1705 See INF CORR 537 25.1.2017/M17247 See INF CORR 14720A	Y	I	D	1	4	0	33,170	0	0	33,170	3,317	2,465	5,806	44,746	0	44,746	N/A	6	0		
19		1	Retrospective instruction to carry out Archaeological Survey to the Calvey A16 House as per letter DEL CORR 176 dated 09 May 2008.	02/08/2008	08/05/08 10/06/08 27/06/08 02/07/08 05/07/08 05/07/08	See DEL CORR 176 25.1.2017/M147 See PRO CORR 57 25.1.2017/M196 25.1.2017/M204 25.1.2017/M242 See INF CORR 139 See INF CORR 170 - TCO 0001	Y	I	D	1	4	0	4,430	0	0	4,430	443	328	775	5,977	5,201	775	N/A	2A	5,201		
20			Discovered asbestos in Calvey A16 House over demolition, as per e-mail Jackson dated 12th March 2008 which is in identified Provisional State requiring an instruction in accordance with Schedule Part 4 paragraph 4.5 Appendix B Part 3 Table 2 item 1	02/06/2008	10/06/08 27/06/08 02/07/08 05/07/08	BB&E Email 25.1.2017/M147 See PRO CORR 57 25.1.2017/M196 25.1.2017/M204 See INF CORR 139	N/A	N/A	D	4	0	0	0	0	0	0	0	0	0	0	0	N/A	2A	0			
21		2	Notified Departure in accordance with 3.4.37 and 3.5 Schedule Part 4 due to the Asbestos Survey carried out by the site and the presence of Asbestos in the existing 300mm to 400mm dia Sewer causing delay and disruption to the Infraco's intended programme and method of work.	02/06/2008	22/05/08 23/05/08 19/06/08 27/06/08 02/07/08 09/07/08 16/07/08 05/08/08 15/08/08	RFT - BES 011 BB&E Email 25.1.2017/M147 See PRO CORR 57 25.1.2017/M196 25.1.2017/M204 25.1.2017/M242 See INF CORR 139 See INF CORR 171	Y	I	D	1	4	0	4,488	0	0	4,488	449	332	785	6,054	5,268	785	N/A	2A	5,268		
22			Notified Departure in accordance with paragraph 3.4.37 and 3.5 Schedule Part 4 due to the Asbestos Survey to be carried out by the site and the presence of Asbestos in the existing 300mm to 400mm dia Sewer causing delay and disruption to the Infraco's intended programme and method of work.	02/06/2008	10/06/08 27/06/08 02/07/08	25.1.2017/M147 See PRO CORR 57 25.1.2017/M196 25.1.2017/M204	TBA	N/A	M	1	4	0	0	0	0	0	0	0	0	0	0	N/A	2A	0			

CEC00624408_0147

Chg. Ref.	Ref. No.	Iss. Change Order Ref.	Description	Date Initiated	Date of Further Issues	Letter Ref.	Agreed in Principle?	Type	Change Type	Schedule	Value Estimate (GBP)								Allocation of Cost	Location		
											SOS	Bridge	Signals	Power	Other Prisms	Construction Prisms	Other Prisms	Total			F. 1/04/04	E. 1/01/04/04
23		12	Worked in accordance with paragraph 3.4.5.6 and 3.5 Schedule Part 4 due to the additional requirement to demolish the access ways to Heysham Station Carpark (HSC) and to install a new access way (AW) in accordance with paragraph 3.4.5.4 and 3.5 Schedule Part 4.	02/06/2008	1435/09 1006/09 0207/09 0812/09 25/01/09	25.1.2017/AM17 In-PC CORR 052/07 In-PC CORR 053/07 In-PC CORR 054/07 In-PC CORR 055/07	Y	M	1	0	1750	0	0	0	0	0	0	1750	341	N/A	2A	2/20
24		30/05/2009	Worked in accordance with paragraph 3.4.5.6 and 3.5 Schedule Part 4 due to the additional requirement to demolish the access ways to Heysham Station Carpark (HSC) and to install a new access way (AW) in accordance with paragraph 3.4.5.4 and 3.5 Schedule Part 4.	08/06/2009	1792/09 24/11/09 1971/09	In-PC CORR 056/07 In-PC CORR 057/07 In-PC CORR 058/07	TBA	M	1	4	0	0	0	0	0	0	0	0	0	N/A	2A	0
25		08/06/2009	Worked in accordance with paragraph 3.4.5.6 and 3.5 Schedule Part 4 due to the additional requirement to demolish the access ways to Heysham Station Carpark (HSC) and to install a new access way (AW) in accordance with paragraph 3.4.5.4 and 3.5 Schedule Part 4.	17/06/2009	2964/09 01/06/09 03/06/09	PRO Infra-2377 In-PC CORR 059/07 In-PC CORR 060/07	TBA	M	1	4	0	0	0	0	0	0	0	0	0	N/A	2A	0
26		17/06/2009	Worked in accordance with paragraph 3.4.5.6 and 3.5 Schedule Part 4 due to the additional requirement to demolish the access ways to Heysham Station Carpark (HSC) and to install a new access way (AW) in accordance with paragraph 3.4.5.4 and 3.5 Schedule Part 4.	17/06/2009	3409/09 01/07/09 3007/09 02/07/09 15/12/09	25.1.2017/AM18 In-PC CORR 061/07 In-PC CORR 062/07 In-PC CORR 063/07 In-PC CORR 064/07	TBA	M	1	4	0	0	0	0	0	0	0	0	0	N/A	2A	0
27		17/06/2009	Worked in accordance with paragraph 3.4.5.6 and 3.5 Schedule Part 4 due to the additional requirement to demolish the access ways to Heysham Station Carpark (HSC) and to install a new access way (AW) in accordance with paragraph 3.4.5.4 and 3.5 Schedule Part 4.	17/06/2009	3702/09 01/07/09 3007/09 02/07/09 17/11/09 25/11/09	25.1.2017/AM19 In-PC CORR 065/07 In-PC CORR 066/07 In-PC CORR 067/07 In-PC CORR 068/07 In-PC CORR 069/07	TBA	M	1	4	0	0	0	0	0	0	0	0	0	N/A	2A	0
28		17/06/2009	Worked in accordance with paragraph 3.4.5.6 and 3.5 Schedule Part 4 due to the additional requirement to demolish the access ways to Heysham Station Carpark (HSC) and to install a new access way (AW) in accordance with paragraph 3.4.5.4 and 3.5 Schedule Part 4.	17/06/2009	3702/09 01/07/09 3007/09 02/07/09 17/11/09 25/11/09	25.1.2017/AM20 In-PC CORR 070/07 In-PC CORR 071/07 In-PC CORR 072/07 In-PC CORR 073/07 In-PC CORR 074/07	TBA	M	1	4	0	0	0	0	0	0	0	0	0	N/A	2A	0
29		17/06/2009	Worked in accordance with paragraph 3.4.5.6 and 3.5 Schedule Part 4 due to the additional requirement to demolish the access ways to Heysham Station Carpark (HSC) and to install a new access way (AW) in accordance with paragraph 3.4.5.4 and 3.5 Schedule Part 4.	17/06/2009	3702/09 01/07/09 3007/09 02/07/09 17/11/09 25/11/09	25.1.2017/AM21 In-PC CORR 075/07 In-PC CORR 076/07 In-PC CORR 077/07 In-PC CORR 078/07 In-PC CORR 079/07	N/A	M	1	1,2,3,4	0	0	0	0	0	0	0	0	0	N/A	2A	0
30		17/06/2009	Worked in accordance with paragraph 3.4.5.6 and 3.5 Schedule Part 4 due to the additional requirement to demolish the access ways to Heysham Station Carpark (HSC) and to install a new access way (AW) in accordance with paragraph 3.4.5.4 and 3.5 Schedule Part 4.	17/06/2009	3702/09 01/07/09 3007/09 02/07/09 17/11/09 25/11/09	25.1.2017/AM22 In-PC CORR 080/07 In-PC CORR 081/07 In-PC CORR 082/07 In-PC CORR 083/07 In-PC CORR 084/07	N	M	1	1,2,3,4	17361	0	0	0	0	0	0	17361	0	N/A	AE	0
31		17/06/2009	Worked in accordance with paragraph 3.4.5.6 and 3.5 Schedule Part 4 due to the additional requirement to demolish the access ways to Heysham Station Carpark (HSC) and to install a new access way (AW) in accordance with paragraph 3.4.5.4 and 3.5 Schedule Part 4.	17/06/2009	3702/09 01/07/09 3007/09 02/07/09 17/11/09 25/11/09	25.1.2017/AM23 In-PC CORR 085/07 In-PC CORR 086/07 In-PC CORR 087/07 In-PC CORR 088/07 In-PC CORR 089/07	N/A	M	1	0	0	0	0	0	0	0	0	0	0	N/A	3	0
32		17/06/2009	Worked in accordance with paragraph 3.4.5.6 and 3.5 Schedule Part 4 due to the additional requirement to demolish the access ways to Heysham Station Carpark (HSC) and to install a new access way (AW) in accordance with paragraph 3.4.5.4 and 3.5 Schedule Part 4.	17/06/2009	3702/09 01/07/09 3007/09 02/07/09 17/11/09 25/11/09	25.1.2017/AM24 In-PC CORR 090/07 In-PC CORR 091/07 In-PC CORR 092/07 In-PC CORR 093/07 In-PC CORR 094/07	TBA	M	1	4	0	0	0	0	0	0	0	0	0	N/A	5	0
33		17/06/2009	Worked in accordance with paragraph 3.4.5.6 and 3.5 Schedule Part 4 due to the additional requirement to demolish the access ways to Heysham Station Carpark (HSC) and to install a new access way (AW) in accordance with paragraph 3.4.5.4 and 3.5 Schedule Part 4.	17/06/2009	3702/09 01/07/09 3007/09 02/07/09 17/11/09 25/11/09	25.1.2017/AM25 In-PC CORR 095/07 In-PC CORR 096/07 In-PC CORR 097/07 In-PC CORR 098/07 In-PC CORR 099/07	TBA	M	1	4	0	0	0	0	0	0	0	0	0	N/A	5	0
34		17/06/2009	Worked in accordance with paragraph 3.4.5.6 and 3.5 Schedule Part 4 due to the additional requirement to demolish the access ways to Heysham Station Carpark (HSC) and to install a new access way (AW) in accordance with paragraph 3.4.5.4 and 3.5 Schedule Part 4.	17/06/2009	3702/09 01/07/09 3007/09 02/07/09 17/11/09 25/11/09	25.1.2017/AM26 In-PC CORR 100/07 In-PC CORR 101/07 In-PC CORR 102/07 In-PC CORR 103/07 In-PC CORR 104/07	TBA	M	1	4	0	0	0	0	0	0	0	0	0	N/A	5	0



Ref.	RtC Ref.	RtC Title	Description	Date Notified	Date of Further Letters	Letter Ref	Agreed in Principle?	Change Type		Change Method	Value Estimate (GBP)						Allocation of Cost	Change Order Sections (See Notes)		
								1st, 2nd, 3rd, 4th, 5th	6th, 7th, 8th, 9th, 10th, 11th, 12th		1st	2nd	3rd	4th	5th	6th			7th	8th
36			Minor Rectification to the Road Bridge at Rosyth Station Westwork in SS L10045 in accordance with Schedule Part 4 paragraph 3.4.3	17/06/2008	2706/08 0107/08 3507/08 3507/08 1806/08 1506/08 2206/08 3010/08 3010/08 1911/08	SS-LEB015 SVW-LET-01200 SS-LEB015 SVW-LET-01150 INF-CORR-127 SVW-LET-01150 INF-CORR-127 SVW-LET-01150 INF-CORR-127 SVW-LET-01150 SS-LEB015 SVW-LET-01200 SS-LEB015 SVW-LET-01200 SS-LEB015 SVW-LET-01200 INF-CORR-127 SVW-LET-01150 INF-CORR-127 SVW-LET-01150 INF-CORR-127 SVW-LET-01150 INF-CORR-127 SVW-LET-01150 INF-CORR-127 SVW-LET-01150 INF-CORR-127 SVW-LET-01150 INF-CORR-127 SVW-LET-01150 INF-CORR-127 SVW-LET-01150 INF-CORR-127 SVW-LET-01150	N/A	M			0	0	0	0	0	0	N/A	1		
37			Delay and Disruption to Cross Rail Gateway Bridge (RC) at Rosyth Station Westwork in SS L10045 in accordance with paragraph 3.4.5.1	17/06/2008	2706/08 0107/08 3507/08 3507/08 1806/08 1506/08 2206/08 3010/08 3010/08 1911/08	SS-LEB015 SVW-LET-01200 SS-LEB015 SVW-LET-01150 INF-CORR-127 SVW-LET-01150 INF-CORR-127 SVW-LET-01150 INF-CORR-127 SVW-LET-01150 SS-LEB015 SVW-LET-01200 SS-LEB015 SVW-LET-01200 SS-LEB015 SVW-LET-01200 INF-CORR-127 SVW-LET-01150 INF-CORR-127 SVW-LET-01150 INF-CORR-127 SVW-LET-01150 INF-CORR-127 SVW-LET-01150 INF-CORR-127 SVW-LET-01150 INF-CORR-127 SVW-LET-01150 INF-CORR-127 SVW-LET-01150 INF-CORR-127 SVW-LET-01150 INF-CORR-127 SVW-LET-01150	TBA	M	4		0	0	0	0	0	0	0	N/A	3	
38			Delay and Disruption to Cross Rail Gateway Bridge (RC) at Rosyth Station Westwork in SS L10045 in accordance with paragraph 3.4.1.3	17/06/2008	2706/08 0107/08 3507/08 3507/08 1806/08 1506/08 2206/08 3010/08 3010/08 1911/08	SS-LEB015 SVW-LET-01200 SS-LEB015 SVW-LET-01150 INF-CORR-127 SVW-LET-01150 INF-CORR-127 SVW-LET-01150 INF-CORR-127 SVW-LET-01150 SS-LEB015 SVW-LET-01200 SS-LEB015 SVW-LET-01200 SS-LEB015 SVW-LET-01200 INF-CORR-127 SVW-LET-01150 INF-CORR-127 SVW-LET-01150 INF-CORR-127 SVW-LET-01150 INF-CORR-127 SVW-LET-01150 INF-CORR-127 SVW-LET-01150 INF-CORR-127 SVW-LET-01150 INF-CORR-127 SVW-LET-01150 INF-CORR-127 SVW-LET-01150 INF-CORR-127 SVW-LET-01150	TBA	M	4		0	0	0	0	0	0	0	0	N/A	3
39			Delay and Disruption to Cross Rail Gateway Bridge (RC) at Rosyth Station Westwork in SS L10045 in accordance with paragraph 3.4.5.1	17/06/2008	2706/08 0107/08 3507/08 3507/08 1806/08 1506/08 2206/08 3010/08 3010/08 1911/08	SS-LEB015 SVW-LET-01200 SS-LEB015 SVW-LET-01150 INF-CORR-127 SVW-LET-01150 INF-CORR-127 SVW-LET-01150 INF-CORR-127 SVW-LET-01150 SS-LEB015 SVW-LET-01200 SS-LEB015 SVW-LET-01200 SS-LEB015 SVW-LET-01200 INF-CORR-127 SVW-LET-01150 INF-CORR-127 SVW-LET-01150 INF-CORR-127 SVW-LET-01150 INF-CORR-127 SVW-LET-01150 INF-CORR-127 SVW-LET-01150 INF-CORR-127 SVW-LET-01150 INF-CORR-127 SVW-LET-01150 INF-CORR-127 SVW-LET-01150 INF-CORR-127 SVW-LET-01150	TBA	M	4		0	0	0	0	0	0	0	0	N/A	1
40			Delay and Disruption to Cross Rail Gateway Bridge (RC) at Rosyth Station Westwork in SS L10045 in accordance with paragraph 3.4.5.1	17/06/2008	2706/08 0107/08 3507/08 3507/08 1806/08 1506/08 2206/08 3010/08 3010/08 1911/08	SS-LEB015 SVW-LET-01200 SS-LEB015 SVW-LET-01150 INF-CORR-127 SVW-LET-01150 INF-CORR-127 SVW-LET-01150 INF-CORR-127 SVW-LET-01150 SS-LEB015 SVW-LET-01200 SS-LEB015 SVW-LET-01200 SS-LEB015 SVW-LET-01200 INF-CORR-127 SVW-LET-01150 INF-CORR-127 SVW-LET-01150 INF-CORR-127 SVW-LET-01150 INF-CORR-127 SVW-LET-01150 INF-CORR-127 SVW-LET-01150 INF-CORR-127 SVW-LET-01150 INF-CORR-127 SVW-LET-01150 INF-CORR-127 SVW-LET-01150 INF-CORR-127 SVW-LET-01150	TBA	M	4		0	0	0	0	0	0	0	0	N/A	1
41			Delay and Disruption to Cross Rail Gateway Bridge (RC) at Rosyth Station Westwork in SS L10045 in accordance with paragraph 3.4.1.3	17/06/2008	2706/08 0107/08 3507/08 3507/08 1806/08 1506/08 2206/08 3010/08 3010/08 1911/08	SS-LEB015 SVW-LET-01200 SS-LEB015 SVW-LET-01150 INF-CORR-127 SVW-LET-01150 INF-CORR-127 SVW-LET-01150 INF-CORR-127 SVW-LET-01150 SS-LEB015 SVW-LET-01200 SS-LEB015 SVW-LET-01200 SS-LEB015 SVW-LET-01200 INF-CORR-127 SVW-LET-01150 INF-CORR-127 SVW-LET-01150 INF-CORR-127 SVW-LET-01150 INF-CORR-127 SVW-LET-01150 INF-CORR-127 SVW-LET-01150 INF-CORR-127 SVW-LET-01150 INF-CORR-127 SVW-LET-01150 INF-CORR-127 SVW-LET-01150 INF-CORR-127 SVW-LET-01150	TBA	M	4		0	0	0	0	0	0	0	0	N/A	3
42			Delay and Disruption to Cross Rail Gateway Bridge (RC) at Rosyth Station Westwork in SS L10045 in accordance with paragraph 3.4.1.3	17/06/2008	2706/08 0107/08 3507/08 3507/08 1806/08 1506/08 2206/08 3010/08 3010/08 1911/08	SS-LEB015 SVW-LET-01200 SS-LEB015 SVW-LET-01150 INF-CORR-127 SVW-LET-01150 INF-CORR-127 SVW-LET-01150 INF-CORR-127 SVW-LET-01150 SS-LEB015 SVW-LET-01200 SS-LEB015 SVW-LET-01200 SS-LEB015 SVW-LET-01200 INF-CORR-127 SVW-LET-01150 INF-CORR-127 SVW-LET-01150 INF-CORR-127 SVW-LET-01150 INF-CORR-127 SVW-LET-01150 INF-CORR-127 SVW-LET-01150 INF-CORR-127 SVW-LET-01150 INF-CORR-127 SVW-LET-01150 INF-CORR-127 SVW-LET-01150 INF-CORR-127 SVW-LET-01150	Y	M	1		2,432	0	0	0	0	2,432	0	0	N/A	3



ETN INFRACO NOTIFICATION of the CHANGE (INTC)		CONFIDENTIAL	Bilfinger/Siemens/CAF	Change Order Issued	Location																							
Ref	Ref. No.	Use Change Order TCO	Description	Date Notified	Date of Further Letters	Letter Ref	Agreed in Principle?	Estimate Issued? (Y/N/On)	Type	Change Type	Pricing Method	Value Estimate (GBP)							Allocation of Cost		Section	Change Order Value (BSC)						
												Submitted (Bilfinger/CAF)	Submitted (Siemens)	Submitted (CAF)	Submitted (Subtotal)	OH & P	Contingency	Other Prelims	Total	Agreed			Not Agreed	From of VE	Number			
43			Order and Disruption due to amended design for Sharncliffe Place Lighting as SDS Letter 0068 in accordance with Schedule Part 4 paragraph 3.4.1.3	17/06/2009	27/06/09 21/07/09 14/07/09/09/09/09 24/07/09 25/07/09 30/07/09 30/08/09 13/09/09 13/09/09 02/10/09 16/10/09 07/01/09 10/02/09 21/06/09	25.1.2017MH03 In-Pr. CORR 10A 25.1.2017MH09 25.1.2017MH20/21/22/23/24/25/26/27/28/29/30/31-LET-0080/21 In-Inf CORR 054 SDS-ULER0130-SW-LET-01130 25.1.2017LH258 In-Inf CORR 057 SDS-ULER0130-SW-LET-01202 In-Inf CORR 169 25.1.2017MH03 25.1.2017MH195 SDS-ULER0130-SW-LET-01330 SDS-ULER0130-SW-LET-01379 In-Inf CORR 2093	N/A	N/A	M	I	1,2,3,4	0	0	0	0	0	0	0	0	0	0	0	0	0	0	0	0	0
44	1		TRC001 Amendments to Ocaish Terminal Layout	26/05/2008	11/06/08 13/06/08 26/06/08 02/07/08 28/07/08 01/08/08 16/08/08 19/08/08 23/09/08 16/10/08 17/11/08 20/11/08 04/12/08 12/12/08 18/12/08 18/12/08 05/01/09 07/01/09 05/04/09 16/04/09	In-TRC001 25.1.2017MH51 In-Inf CORR 002 25.1.2017K0781 25.1.2017TM004 SDS-ULER0130-SW-LET-01130 25.1.2017K0342 In-Inf CORR 154 SDS-ULER0130-SW-LET-01202 In-Inf CORR 185 25.1.2017CH0546 In-Inf CORR 244 In-Inf CORR 307 25.1.2017MRH573 25.1.2017K01057 In-Inf CORR 508 In-Inf CORR 537 25.1.2017MRH1208 In-Inf CORR 553 25.1.2017MRH1247 In-Inf CORR 1210AMP 25.1.2017MRH2263	Y	I	I	I	1	0	117,255	0	0	117,255	0	8,677	20,520	146,451	25,201	171,852	DRS	13	1A	0	0	
45			Order and Disruption due to amended design for A2500 Bulfinch Street Tram Stop as SDS Letter 00701 in accordance with Schedule Part 4 paragraph 3.4.1.3	04/07/2009	04/06/09 30/06/09 23/07/09 (22/07/09) 16/12/09	SDS-ULER0130-01-LET-00670 SDS-ULER0130-01-LET-00701 25.1.2017MH017 25.1.2017LH250 (inc Tn In-Inf CORR 045) 25.1.2017MH195	TBA	N/A	M	I	4	0	0	0	0	0	0	0	0	0	0	0	0	0	0	0	0	0
46			Order and Disruption due to amended design for 305250040 1B Roads Street Lighting, Landscaping and Drainage as SDS Letter 00701 in accordance with Schedule Part 4 paragraph 3.4.1.3	04/07/2009	04/06/09 30/06/09 01/07/09 11/07/09 22/07/09 23/07/09 23/07/09 16/12/09	SDS-ULER0130-01-LET-00670 SDS-ULER0130-01-LET-00701 SDS-ULER0130-01-LET-00701 25.1.2017LH217 SDS-ULER0130-01-LET-00732 In-Inf CORR 045 25.1.2017LH207 25.1.2017LH290 25.1.2017MH195	TBA	N/A	M	I	4	0	0	0	0	0	0	0	0	0	0	0	0	0	0	0	0	0
47			Order and Disruption due to amended design for 30524200 Issue Roads Design to Roads Authority for Approval Section 1A1 20225707 - Issue Roads Design to Roads Authority for Approval Section 1A2 30288010 - Issue Roads Design to Roads Authority for Approval Section 1A4 as SDS Letter 00701 in accordance with Schedule Part 4 paragraph 3.4.1.3	04/07/2009	04/06/09 30/06/09 30/06/09 11/07/09 22/07/09 23/07/09 16/12/09	SDS-ULER0130-01-LET-00670 SDS-ULER0130-01-LET-00701 SDS-ULER0130-01-LET-00701 25.1.2017LH217 SDS-ULER0130-01-LET-00721 In-Inf CORR 045 25.1.2017LH290 25.1.2017MH195	TBA	N/A	M	I	4	0	0	0	0	0	0	0	0	0	0	0	0	0	0	0	0	0
48	15		4400001 TRC Drawings as SDS letter ref ULE0130-SW-LET-01100 dated 4th July - Incorporation with SDS Agreement Schedule Clause 15, and Schedule 4 Clause 3.5.5.4	16/07/2009	04/07/09 17/11/09 18/12/09 07/01/09 22/01/09 03/02/09 06/02/09 08/02/09 25/04/09 09/04/09	SDS-ULER0130-SW-LET-0110 25.1.2017LH268 25.1.2017MH245 In-Inf CORR 537 25.1.2017MRH1247 In-Inf CORR 529 SDS-ULER0130-SW-LET-01367 25.1.2017LH1493 25.1.2017K01529 In-Inf CORR 137AMP	Y	I	D	I	3	3,404	0	0	0	3,404	340	252	0	3,996	3,550	446	N/A	All	3,500	0		
49	6		TRC 5 - Bernard Street Public Realm Works	24/06/2008	09/04/09 27/05/09 29/05/09 12/06/09 12/06/09 12/06/09 30/07/09 30/07/09 19/09/09 19/09/09 22/09/09 23/09/09 30/09/09 21/10/09 03/10/09 30/10/09 29/10/09 24/11/09 24/11/09 20/11/09 09/12/09 18/12/09 07/01/09 09/04/09 15/04/09	BBW-Email Bernard St Layout BBW-Email - Tramstop SDS-ULER0130-01-LET-00545 Email BBW-EC - Prior App Sub SDS-ULER0130-01-LET-00885 BBW-Email Paving In-Inf CORR 009 25.1.2017AL024 In-Inf CORR 121 25.1.2017LH295 Email BB-Crumb-paving SDS-ULER0130-01-LET-00813 In-Inf CORR 177 25.1.2017AL560 Email L-Link (Programme) 25.1.2017LH090 25.1.2017MH095 In-Inf CORR 278 25.1.2017AL096 In-Inf CORR 409 25.1.2017MRH1016 In-Inf CORR 84 25.1.2017AL126 In-Inf CORR 84 25.1.2017AL126 In-Inf CORR 537 25.1.2017MRH1247 In-Inf CORR 1218AD 25.1.2017AL0296	Y	I	I	I	4	1,2,83	0	1,846,220	0	0	1,846,220	0	77,420	183,088	1,206,728	720,356	586,372	N/A	1A	0	0	
50	22		Various Traffic Signal requirements to letter INF_CORR0301676	16/07/2009	07/02/09 16/07/09 07/09/09 03/09/09 24/09/09 18/12/09 07/01/09 09/04/09 15/04/09	25.1.2017MH03 In-Inf CORR 038 ETNBSCTIE-ABC In-Inf CORR 081 ETNBSCTIE-ABC#0029 In-Inf CORR 183 In-Inf CORR 537 25.1.2017MRH1247 In-Inf CORR 840 ETNBSCTIE-SPM#ABC#063430	Y	I	I	I	1	0	0	31,188	0	0	31,188	ind	ind	31,188	30,650	638	N/A	1	30,650	0		

CEC00624408_0150

EDINBURGH NETWORK NOTIFICATION of the CHANGE (NTC)

CONFIDENTIAL



Ref.	No. of Change Order	Date	Description	Date Notified	Date of further letters	Letter Ref	Agreed in Principle?	Change Impact	Change Type	Change Method	Value Estimate (GBP)				Allocation of Cost	Location		
											2025	2026	2027	2028				
51	2	6	1102001 - Various diversions & associated works required to allow for reduction in set two works (refer to MOP/Works) issued with drawings & schedule. Section 5a.	05/05/2020	27/02/08	16-0507/008-43												
					23/07/08	25.1.201/01281												
					07/06/09	16-0507/008-43												
					14/05/09	16-0507/008-43												
					21/06/09	25.1.201/01293												
					17/09/09	16-0507/008-43												
					09/10/09	16-0507/008-43												
					09/10/09	25.1.201/01288												
					09/10/09	25.1.201/01288												
					09/10/09	25.1.201/01288												
52	3	7	1102001 - Various diversions & associated works deemed available in addition with set two works (refer to MOP/Works) issued with drawings & schedule. Section 5a.	05/05/2020	11/02/08	16-0507/008-43												
					23/07/08	25.1.201/01280												
					07/06/09	16-0507/008-43												
					14/05/09	16-0507/008-43												
					21/06/09	25.1.201/01293												
					17/09/09	16-0507/008-43												
					09/10/09	16-0507/008-43												
					09/10/09	25.1.201/01288												
					09/10/09	25.1.201/01288												
					09/10/09	25.1.201/01288												
					09/10/09	25.1.201/01288												
					09/10/09	25.1.201/01288												
					09/10/09	25.1.201/01288												
					09/10/09	25.1.201/01288												
					09/10/09	25.1.201/01288												
					09/10/09	25.1.201/01288												
					09/10/09	25.1.201/01288												
					09/10/09	25.1.201/01288												
					09/10/09	25.1.201/01288												
					09/10/09	25.1.201/01288												
					09/10/09	25.1.201/01288												
53	4	3	1102001 - Various diversions & associated works deemed available in addition with set two works (refer to MOP/Works) issued with drawings & schedule. Section 5a.	05/05/2020	07/02/08	16-0507/008-43												
					23/07/08	25.1.201/01289												
					07/06/09	16-0507/008-43												
					14/05/09	16-0507/008-43												
					21/06/09	25.1.201/01293												
					17/09/09	16-0507/008-43												
					09/10/09	16-0507/008-43												
					09/10/09	25.1.201/01288												
					09/10/09	25.1.201/01288												
					09/10/09	25.1.201/01288												
54	7	7	1102001 - Various diversions & associated works deemed available in addition with set two works (refer to MOP/Works) issued with drawings & schedule. Section 5a.	05/05/2020	07/02/08	16-0507/008-43												
					23/07/08	25.1.201/01289												
					07/06/09	16-0507/008-43												
					14/05/09	16-0507/008-43												
					21/06/09	25.1.201/01293												
					17/09/09	16-0507/008-43												
					09/10/09	16-0507/008-43												
					09/10/09	25.1.201/01288												
					09/10/09	25.1.201/01288												
					09/10/09	25.1.201/01288												
55a	7	7	1102001 - Various diversions & associated works deemed available in addition with set two works (refer to MOP/Works) issued with drawings & schedule. Section 5a.	05/05/2020	07/02/08	16-0507/008-43												
					23/07/08	25.1.201/01289												
					07/06/09	16-0507/008-43												
					14/05/09	16-0507/008-43												
					21/06/09	25.1.201/01293												
					17/09/09	16-0507/008-43												
					09/10/09	16-0507/008-43												
					09/10/09	25.1.201/01288												
					09/10/09	25.1.201/01288												
					09/10/09	25.1.201/01288												

ITN IMPACT NOTIFICATION OF THE CHANGE (INTC)

CONFIDENTIAL

Order No.	Ref.	EC	Is Change Overtaken?	Description	Date Refined	Date of further letters	Letter Ref.	Approved in Principle?	Change Type	Change Method	Value Estimate (GBP)										Allocation of Cost	Change Order Sections				
											3. 2021/23	4. 2021/23	5. 2021/23	6. 2021/23	7. 2021/23	8. 2021/23	9. 2021/23	10. 2021/23	11. 2021/23	12. 2021/23			13. 2021/23	14. 2021/23	15. 2021/23	
63	10	5	No	Order No. 10 description was to be replaced by C&G of 2021/2300 - 3C Road Street Lighting Lamps by 2021/2300 and in accordance with...	29/07/2020			TBA	N/A	M	1	4	0	0	0	0	0	0	0	0	N/A	0	3	0		
64	9	5	No	Order No. 9 description was to be replaced by C&G of 2021/2300 - 3C Road Street Lighting Lamps by 2021/2300 and in accordance with...	29/07/2020			TBA	N/A	M	1	4	0	0	0	0	0	0	0	0	N/A	0	1A	0		
65	5	5	No	Order No. 5 description was to be replaced by C&G of 2021/2300 - 3C Road Street Lighting Lamps by 2021/2300 and in accordance with...	29/07/2020			TBA	N/A	M	1	4	0	0	0	0	0	0	0	0	N/A	0	10	0		
66	5	5	No	Order No. 5 description was to be replaced by C&G of 2021/2300 - 3C Road Street Lighting Lamps by 2021/2300 and in accordance with...	31/07/2020			Y	I	M	1	4	22,200	0	0	3,200	29,540	36,040	3,000	N/A	N/A	0	3A,5	26,040	0	
67	5	5	No	Order No. 5 description was to be replaced by C&G of 2021/2300 - 3C Road Street Lighting Lamps by 2021/2300 and in accordance with...	24/07/2020			Y	I	M	1	4	8,553	30,122	0	38,675	48,932	5,271	2,862	15,802	N/A	N/A	7	0	0	
68	5	5	No	Order No. 5 description was to be replaced by C&G of 2021/2300 - 3C Road Street Lighting Lamps by 2021/2300 and in accordance with...	05/09/2020			Y	I	M	1	4	1,994	152,263	0	154,247	194,782	27,116	11,466	194,782	N/A	N/A	7	0	0	
69	5	5	No	Order No. 5 description was to be replaced by C&G of 2021/2300 - 3C Road Street Lighting Lamps by 2021/2300 and in accordance with...	08/09/2020			Y	I	M	1	4	0	0	0	0	0	0	0	0	0	0	7	0	0	
70	5	5	No	Order No. 5 description was to be replaced by C&G of 2021/2300 - 3C Road Street Lighting Lamps by 2021/2300 and in accordance with...	15/07/2020			N/A	N/A	D	0	0	0	0	0	0	0	0	0	0	0	2	7	0	0	
71	5	5	No	Order No. 5 description was to be replaced by C&G of 2021/2300 - 3C Road Street Lighting Lamps by 2021/2300 and in accordance with...	02/10/20			Y	I	M	1	4	0	0	0	0	0	0	0	0	0	0	0	0	0	0
72	5	5	No	Order No. 5 description was to be replaced by C&G of 2021/2300 - 3C Road Street Lighting Lamps by 2021/2300 and in accordance with...	25/07/2020			Y	I	M	1	4	3,879	3,879	0	3,879	4,066	0	0	4,066	N/A	0	1A	0	0	
73	5	5	No	Order No. 5 description was to be replaced by C&G of 2021/2300 - 3C Road Street Lighting Lamps by 2021/2300 and in accordance with...	15/07/2020			Y	I	M	1	4	2,763	0	0	2,763	3,243	0	0	3,243	N/A	0	5A	0	0	

RTN IMPACT NOTIFICATION of CHANGE (INTC)
CONFIDENTIAL

Chg. Ref.	Ref. No.	Is Change Critical (Y/N)	Description	Date Initiated	Date of further review	Letter Ref.	Agreed in Principle?	Change Impact			Change Type	Change Method	Value Estimate (GBP)						Allocation of Cost	Change Order Refs (MCS)	Location							
								Lvl 1 Chg	Seq No	Seq No			Subtotal	Chg L.P.	Construction Points	Other Points	Total	1. F.102.014				1. F.102.014.01	1. F.102.014.02	1. F.102.014.03				
66	11		IMP 0115 Revised Specifications (RS) Organogram Teamwork Facilitation for mixed Teamwork based on Long and South Feasibility	23/07/2019	24/07/2019		Y	1	1	1	1	4	3	0	0	0	0	0	0	0	0	0	VPS	9	7	0		
66a			Revised Specifications (RS) Organogram Teamwork version 2		18/07/2019	SS-SALEB0130-LET-02072									7,154	66	629	0	7,883	0	7,883	VPS	9	7	0			
66b			Revised Specifications (RS) Organogram Teamwork version 2		27/07/2019	SS-SALEB0130-LET-02072									0	0	0	0	0	0	0	0	0	0	0	0		
67			IMP 0115 Revised Specifications (RS) Organogram Teamwork Facilitation of Incoherent	15/07/2019	24/07/2019		Y	1	1	1	1	4	4	0	0	0	0	0	0	0	0	0	0	0	0	0	SA	0
68			IMP 0115 Revised Specifications (RS) Organogram Teamwork Facilitation of Incoherent	23/07/2019	17/11/2019		TBA	N/A	M	M	M	M	M	0	0	0	0	0	0	0	0	0	0	0	0	0	0	
69			IMP 0115 Revised Specifications (RS) Organogram Teamwork Facilitation of Incoherent	23/07/2019	18/07/2019		TBA	N/A	M	M	M	M	M	0	0	0	0	0	0	0	0	0	0	0	0	0	0	
70			IMP 0115 Revised Specifications (RS) Organogram Teamwork Facilitation of Incoherent	23/07/2019	18/07/2019		TBA	N/A	M	M	M	M	M	0	0	0	0	0	0	0	0	0	0	0	0	0	0	
71			IMP 0115 Revised Specifications (RS) Organogram Teamwork Facilitation of Incoherent	23/07/2019	18/07/2019		TBA	N/A	M	M	M	M	M	0	0	0	0	0	0	0	0	0	0	0	0	0	0	
72			IMP 0115 Revised Specifications (RS) Organogram Teamwork Facilitation of Incoherent	23/07/2019	18/07/2019		TBA	N/A	M	M	M	M	M	0	0	0	0	0	0	0	0	0	0	0	0	0	0	

Ref.	Ref. No.	Iss Change Order Ref. (ICO)	Description	Date Initiated	Date of further issues	Letter Ref	Agreed in Principle?	Lvl (D/N)	Type	Change Type	Change Method	Value Estimate (GBP)										Change Order Ref. (MS)				
												2025	2026	2027	2028	2029	2030	2031	2032	2033	2034		2035	2036	2037	2038
73			Revised (only) Station Water - Construction Network	22/05/2008	17/09/09 24/11/09		N	D	M	1	4	0	0	0	0	0	0	0	0	0	0	0	0	5A	0	
74	63		Street Overpass, Coppi Laneoff	02/05/2008	25/09/08 07/10/08 15/10/08 20/10/08 29/10/08 18/12/08 18/12/08 25/02/09 09/02/09 09/02/09 09/02/09		Y	T	M	1	4	1,335	0	0	96	1,434	0	0	0	0	0	0	0	7	1,434	
75	27		Street Overpass, Coppi Laneoff Temporary Access Ramp from Coppi	02/05/2008	25/09/08 17/09/09 18/12/08 15/10/08 20/10/08 29/10/08 18/12/08 18/12/08 25/02/09 09/02/09 09/02/09		Y	T	M	1	4	12,222	0	0	904	13,222	1,222	2,298	0	0	0	0	0	0	7	14,189
76	95		Dogie Depot Public Tramway approach ONP options 4B, 4C	06/05/2008	20/09/08 19/09/08 03/10/08 18/12/08 23/01/09 29/01/09 12/02/09 09/04/09 10/04/09 10/04/09 10/04/09		Y	T	I	4	1,2,4,3	341,318	0	684,689	34,132	35,268	0	0	0	0	0	0	0	0	6	0
77			DESIGN ONLY to Award of route design section 5C (Bach 6/20) Peer approval application Ref:08/02/21 IFA, in liaison with COM 055 dated 25th July 2008.	26/05/2008	18/09/08 03/10/08 18/12/08 29/10/08 02/11/08 18/01/09 02/11/08 15/05/09		Y	T	M	4	4	2,962	43,689	48,389	206	3,431	7,596	0	0	0	0	0	0	5C	0	
78			Design Only for Alterations to design of Edinburgh Airport Tramway and retaining wall design at Jubilee Road as the latter (ref. COM 072 dated 05 August 2008)	01/06/2008	13/02/09 19/06/08 01/06/08 05/06/08 29/06/08 29/06/08 29/06/08 02/07/08 14/07/08 23/09/08 30/10/08 21/11/08 09/01/09 15/01/09 23/01/09 05/02/09 05/02/09 09/02/09 09/02/09 09/02/09		Y	T	M	4	4	41,414	0	41,414	4,141	3,065	0	0	0	0	0	0	0	7	0	

ITEM REFERENCE NOTIFICATION OF CHANGE (NFC) CONFIDENTIAL

Westminster/Edinburgh/Leith

Table with columns: Ref, Rf, Description, Date Notified, Date of Issue, Letter Ref, Agreed in Principle?, Change Impact, Change Type, Change Method, Value Estimate (GBP), Allocation of Cost, Location. Includes logos for Bilfinger Berger, Siemens, CAF, and CAF.

Ref. No.	Is Change Critical (Y/N)	Description	Date Notified	Date of further issues	Letter Ref	Agreed in Principle?	Type	Change Type	Change Method	Value Estimate (GBP)	Value Estimate (GBP)						Allocation of Cost	Location			
											Subtotal	Other P.	Contingency	Other Prisms	Total	1. 2017/18			2. 2018/19	3. 2019/20	4. 2020/21
85	B	INFRACO to carry out Electrical Work Cost Estimate (Where based on FCC Drawing is in Agreed with It)	03/07/2008	1601008	INF CORR 081																
				1601009	INF CORR 244																
				1712008	INF CORR 050																
				1812008	INF CORR 050																
				1912008	INF CORR 050																
				2010008	INF CORR 050																
				2101008	INF CORR 050																
				2201008	INF CORR 050																
				2301008	INF CORR 050																
				2401008	INF CORR 050																
				2501008	INF CORR 050																
				2601008	INF CORR 050																
				2701008	INF CORR 050																
86	B	MGT to INFRACO transfer of Utilities Division, Sections 1A, 1B, 1C and 1D.	03/08/2008	2006008	INF CORR 081																
				2106008	INF CORR 157																
				1705008	INF CORR 157																
				1810008	INF CORR 244																
				2310008	INF CORR 244																
				2410008	INF CORR 244																
				2510008	INF CORR 244																
				2610008	INF CORR 244																
				2710008	INF CORR 244																
				2810008	INF CORR 244																
				2910008	INF CORR 244																
				3010008	INF CORR 244																
				3110008	INF CORR 244																
87	B	Duct Installation at Lark Walk	11/07/2008	1407008	INF CORR 020																
				1507008	INF CORR 020																
				1607008	INF CORR 020																
				1707008	INF CORR 020																
				1807008	INF CORR 020																
				1907008	INF CORR 020																
				2007008	INF CORR 020																
				2107008	INF CORR 020																
				2207008	INF CORR 020																
				2307008	INF CORR 020																
				2407008	INF CORR 020																
				2507008	INF CORR 020																
				2607008	INF CORR 020																
88	B	Power Connections Phase 1a	08/09/2008	2508008	INF CORR 020																
				2608008	INF CORR 020																
				2708008	INF CORR 020																
				2808008	INF CORR 020																
				2908008	INF CORR 020																
				3008008	INF CORR 020																
				3108008	INF CORR 020																
				3208008	INF CORR 020																
				3308008	INF CORR 020																
				3408008	INF CORR 020																
				3508008	INF CORR 020																
				3608008	INF CORR 020																
				3708008	INF CORR 020																
89	B	Barrow Street Crossing	30/10/08	2809008	INF CORR 020																
				2909008	INF CORR 020																
				3009008	INF CORR 020																
				3109008	INF CORR 020																
				3209008	INF CORR 020																
				3309008	INF CORR 020																
				3409008	INF CORR 020																
				3509008	INF CORR 020																
				3609008	INF CORR 020																
				3709008	INF CORR 020																
				3809008	INF CORR 020																
				3909008	INF CORR 020																
				4009008	INF CORR 020																
4109008	INF CORR 020																				
90	B	Change of Work Request - 101 Glenpark Westway	11/07/2008	2307008	INF CORR 020																
				2407008	INF CORR 020																
				2507008	INF CORR 020																
				2607008	INF CORR 020																
				2707008	INF CORR 020																
				2807008	INF CORR 020																
				2907008	INF CORR 020																
				3007008	INF CORR 020																
				3107008	INF CORR 020																
				3207008	INF CORR 020																
				3307008	INF CORR 020																
				3407008	INF CORR 020																
				3507008	INF CORR 020																

ETN IMPACT NOTIFICATION of the CHANGE (INTC)
CONFIDENTIAL

Ref. No.	IC Change Order ID	Description	Date Notified	Date of further letters	Letter Ref	Agreed in Principle?	IC Change Impact	Type	Change Type	Change Method	Value Estimate (GBP)						Allocation of Cost	Sections	Change Order Refs			
											3000	3001	3002	3003	3004	3005				3006	3007	3008
102	15/09/2008	RFC Drawing Change Backward RTW	15/09/2008	23/10/08	SI 1301/0408																	
				02/11/08	SI 1301/0426																	
				29/11/08	SI 1301/0437																	
				30/10/08	SI 1301/0439																	
				04/11/08	SI 1301/0443																	
				11/12/08	SI 1301/0444																	
				04/02/09	SI 1301/0447A																	
				16/03/09	SI 1301/0447B																	
				17/02/09	SI 1301/0447C																	
				13/06/09	SI 1301/0527A																	
103	15/09/2008	RFC Drawing Change Oyle Stop RTW	15/09/2008	23/10/08	SI 1301/0434																	
				02/11/08	SI 1301/0437																	
				29/11/08	SI 1301/0439																	
				04/11/08	SI 1301/0443																	
				11/12/08	SI 1301/0444																	
				02/04/09	SI 1301/0447																	
				16/07/09	SI 1301/0447C																	
				08/08/09	SI 1301/0447D																	
				10/06/09	SI 1301/0527C																	
				23/10/08	SI 1301/0531B																	
104	15/09/2008	RFC Drawing Change Murrayfield Underpass	15/09/2008	23/10/08	SI 1301/0405																	
				02/11/08	SI 1301/0437																	
				29/11/08	SI 1301/0439																	
				04/11/08	SI 1301/0443																	
				11/12/08	SI 1301/0444																	
				02/04/09	SI 1301/0447																	
				16/07/09	SI 1301/0447C																	
				08/08/09	SI 1301/0447D																	
				10/06/09	SI 1301/0527E																	
				23/10/08	SI 1301/0531B																	
110	15/09/2008	RFC Drawing Change South Oyle Access Bridge	15/09/2008	02/11/08	SI 1301/0425																	
				23/10/08	SI 1301/0437																	
				29/11/08	SI 1301/0439																	
				04/11/08	SI 1301/0443																	
				11/12/08	SI 1301/0444																	
				02/04/09	SI 1301/0447																	
				16/07/09	SI 1301/0447C																	
				08/08/09	SI 1301/0447D																	
				10/06/09	SI 1301/0527F																	
				23/10/08	SI 1301/0531B																	
111	15/09/2008	RFC Drawing Change Goppartun Bridge	15/09/2008	30/06/08	SI 1301/0313																	
				15/10/08	SI 1301/0408																	
				30/10/08	SI 1301/0420																	
				04/11/08	SI 1301/0443																	
				11/12/08	SI 1301/0444																	
				02/04/09	SI 1301/0447																	
				16/07/09	SI 1301/0447C																	
				08/08/09	SI 1301/0447D																	
				10/06/09	SI 1301/0527G																	
				23/10/08	SI 1301/0531B																	
112	15/09/2008	RFC Drawing Change Haymarket Viaduct	15/09/2008	30/06/08	SI 1301/0304																	
				15/10/08	SI 1301/0408																	
				30/10/08	SI 1301/0420																	
				04/11/08	SI 1301/0443																	
				11/12/08	SI 1301/0444																	
				02/04/09	SI 1301/0447																	
				16/07/09	SI 1301/0447C																	
				08/08/09	SI 1301/0447D																	
				10/06/09	SI 1301/0527H																	
				23/10/08	SI 1301/0531B																	

ETN INFRACO NOTIFICATION of the CHANGE (INTC)
CONFIDENTIAL

Ref. No.	Date	Iss Change Order (ICO)	Description	Date Notified	Date of further letters	Letter Ref	Approved in Principle?	ICM Change Record	Change Type	Change Method	Value Estimate (GBP)						Allocation of Cost	Change Order Sections																																																																
											2017/10/01	2017/10/02	2017/10/03	2017/10/04	2017/10/05	2017/10/06			2017/10/07	2017/10/08	2017/10/09	2017/10/10																																																												
115	15/05/2008		RFC Drawing Change Rectifier Road Bridge	15/05/2008	300669 151008 301008 041108 117208 160309 160769 170209 170609 180569 200669 200869	In NF CORR 193 In NF CORR 193 In NF CORR 313 In NF CORR 313 In NF CORR 434 In NF CORR 434 In NF CORR 434 In NF CORR 434 In NF CORR 434 In NF CORR 434 In NF CORR 434 In NF CORR 434 In NF CORR 434 In NF CORR 434	TBA	M	1	1,4	0	0	0	0	0	0	0	0	2	0																																																														
																					116	15/05/2008		RFC Drawing Change Water of Lamb Bridge	15/05/2008	020769 151008 301008 041108 117208 160309 160769 170209 170609 180569 200669 200869	In NF CORR 193 In NF CORR 193 In NF CORR 313 In NF CORR 313 In NF CORR 434 In NF CORR 434 In NF CORR 434 In NF CORR 434 In NF CORR 434 In NF CORR 434 In NF CORR 434 In NF CORR 434 In NF CORR 434	Y (P4)	M	1	1,4	1	0	0	0	0	0	0	0	0	0																																									
																																										117	15/05/2008		Extra Demolition required at Rectifier Road Retaining wall to Aberdeen Street Road Retention Change	15/05/2008	217008 191108 210108 210108 210108 210108 210108 210108 210108 210108 210108 210108	TBA	M	1	1,4	0	0	0	0	0	0	0	0	0	0																					
																																																														118	14/03/2008		RFC Drawing Change Cathlam Lane Sub Station	14/03/2008	230569 227008 227008 317008 091208 127208 200169 230569 230569 230569 230569 230569	In NF CORR 153 In NF CORR 259 In NF CORR 259 In NF CORR 318 In NF CORR 318 In NF CORR 458 In NF CORR 458 In NF CORR 458 In NF CORR 458 In NF CORR 458 In NF CORR 458 In NF CORR 458	TBA	M	1	1	0	0	0	0	0	0	0	0	0	0



ETN INFRACO NOTIFICATION of the CHANGE (INTC)	CONFIDENTIAL	Wishart/Superstonedrive.com	Delay Only	Change Order Issued	Location	Change Order Value (BSC)																					
Ref	Ratf. File	Use Change Order TCO	Description	Date Notified	Date of Further Letters	Letter Ref	Agreed in Principle?	Estimate Issued? I-Y, O/N	Type	Change Type	Pricing Method	Value Estimate (GBP)										Allocation of Cost		Section Number	Change Order Value (BSC)		
												Bilfinger	Siemens	CAF	Sub-total	OH & P	Contingent Prelims	Other Prelims	Total	£ Agreed	£ Not Agreed	Sum of VE	Number				
119			P.C Drawing Change Leith Walk Sub Station	14/10/2008	2309/08 2710/08 2710/08 28/10/08 31/10/08 04/11/08 21/11/08 09/12/08 13/12/08 16/12/08 20/1/09 20/1/09 25/02/09 02/03/09	25.1.201MRH671 hw INF CORR 258 hw INF CORR 259 25.1.201MRH773 25.1.201MRH778 hw INF CORR 318 25.1.201MRH836 25.1.201MRH959 hw INF CORR 459 25.1.201MRH1192 25.1.201MRH1173 hw INF CORR 575 25.1.201AL1354 hw INF CORR 779 25.1.201A01789	TBA	0	M	I	0	0	0	0	0	0	0	0	0	0	0	0	0	N/A	1B	0	
120			P.C Drawing Demolish and reinforcing of existing building for Leith Walk Sub Station, sub station now positioned in area of building to be demolished	14/10/2008	2309/08 2710/08 2710/08 28/10/08 31/10/08 04/11/08 21/11/08 09/12/08 13/12/08 16/12/08 20/1/09 20/1/09 25/02/09 02/03/09	25.1.201COR672 hw INF CORR 303 hw INF CORR 259 25.1.201MRH773 25.1.201MRH778 hw INF CORR 318 25.1.201MRH836 25.1.201MRH959 hw INF CORR 455 25.1.201MRH1192 25.1.201MRH1173 hw INF CORR 576 25.1.201AL1356 hw INF CORR 399	TBA	NA	M	I	0	0	0	0	0	0	0	0	0	0	0	0	0	0	N/A	1B	0
121	16		Urban Traffic Control (UTC) associated with delivery of the alignment	17/03/2008	13/10/08 2309/08 27/10/08 09/11/08 14/11/08 21/11/08 18/12/08 07/01/09 09/04/09 21/04/09 21/04/09 17/07/09 20/07/09 29/07/09 05/08/09	hw INF CORR 135 25.1.201MRH487 hw INF CORR 258 25.1.201MRH773 hw INF CORR 339 hw INF CORR 388 25.1.201MRH993 hw INF CORR 537 25.1.201MRH1147 hw INF CORR 1204MR 25.1.201MRH2250 ETNBSCTIEACLAB0062091 ETNBSCTIEACLAB063657 25.1.201AL2086 ETNBSCTIEACLAB0063576 hw INF CORR 1973GB	Y	I	M	I	4	0	2,647,142	4,213,962	0	5,861,099	195,888	483,290	0	7,520,232	0	7,520,232	DPS	10	A8	0	
122			Delay in receipt of CEC prior approval Sections 1A1 & 1A2	31/07/2008	25/07/08 29/08/08 16/09/08 02/10/08 17/11/08 18/12/08	PB ULE90130-01-LET-00743 BSC 25.1.201MR037 ULE90130-01-LET-00779 hw INF CORR 137 25.1.201MR776 25.1.201MR936 25.1.201MR938	TBA	NA			0	0	0	0	0	0	0	0	0	0	0	0	N/A	1A	0		
123			Faith Funds Agreement and Design Completion	16/08/2008	08/10/08 14/10/08 13/10/08 16/10/08 23/09/08 27/10/08 31/10/08 09/11/08 09/11/08 10/11/08 12/11/08 14/11/08 17/11/08 19/11/08 17/11/08 18/11/08 20/11/08 20/11/08 21/11/08 21/11/08 25/11/08 27/11/08 02/12/08 03/12/08 04/12/08 17/12/08 19/12/08 19/12/08 19/12/08 07/01/09 07/01/09 13/01/09	hw INF CORR 14 25.1.201RS0643 25.1.201MRH454 SDS-ULE90130-01-LET-00818 hw INF CORR 244 hw INF CORR 259 25.1.201MRH778 25.1.201MRH820 hw INF CORR 338 SDS-ULE90130-01-LET-01293 25.1.201MRH983 SDS-ULE90130-01-LET-00864 hw INF CORR 388 25.1.201MRH931 25.1.201BCC969 hw INF CORR 307 SDS-ULE90130-01-LET-01273 25.1.201MRH973 25.1.201RS0004 25.1.201BCC998 25.1.201MRH993 SDS-ULE90130-01-LET-00882 hw INF CORR 432 25.1.201MRH1074 25.1.201MRH1090 SDS-ULE90130-01-LET-00996 25.1.201MRH1193 hw INF CORR 537 25.1.201MRH1209 25.1.201MRH1247 SDS-ULE90130-01-LET-01330 hw INF CORR 584	Y	I	I	4	12,34	47,566	0	0	0	47,566	4,787	3,620	0	55,942	0	55,942	N/A		1A	0	
124			Requirement for Principal Contractors License for Newark Road Related Works	10/10/2008	2309/08 27/10/08 14/11/08 21/11/08 13/02/09 06/03/09 09/04/09 21/04/09 23/04/09	25.1.201GC859 hw INF CORR 258 25.1.201MRH773 hw INF CORR 388 25.1.201MRH993 25.1.201RS0004 hw INF CORR 891 hw INF CORR 1204MR 25.1.201MRH2250 25.1.201GC0379	N	I	I	4	0	842,771	0	0	842,771	84,277	62,266	147,485	1,136,898	0	1,136,898	N/A	A8	0			
125			Unforeseen Ground Conditions at Haymarket Viaduct	10/10/2008	13/10/08 08/01/09 23/01/09 19/02/09 23/02/09 06/03/09 21/03/09 30/04/09 12/05/09 13/05/09 16/06/09	25.1.201GC860 hw INF CORR 364 25.1.201GC1256 hw INF CORR 625 SDS-ULE90130-01-LET-01378 25.1.201MRH999 hw INF CORR 903 25.1.201GC0377 hw INF CORR 1369/TC hw INF CORR 1848/R9 hw INF CORR 1856/GC 25.1.201MRH2866	Y	0	M	I	4	0	0	0	0	0	0	0	0	0	0	0	0	0	N/A	2	0

CEC00624408_0161

Ref.	Rev.	Description	Date Issued	Date of Further Issues	Letter Ref	Approved in Principle?	Change Order			Other Parties	Value Estimate (GBP)			Allocation of Cost	Location			
							Type	Change Type	Change Method		Subtotal	On P.P.	Contractual Price			T. Agreed	E. 100 / V. 100	T. 100 / V. 100
102		Revised design for OLE poles to Stations 18	07/10/2009	18/06/09	SOS-OLEP010-LET-00818		4	0	0	0	0	0	0		1B			
		Spare packages for Pole Approvals	03/10/2008	22/06/08	SOS-OLEP010-LET-01020		4	0	0	0	0	0	0					
		Column Terminal to Port of Lath.		30/06/08	25.1.201AH063													
				10/10/08	19/06/08	25.1.201AH063												
103		SEC's Request for Extension of Time for Pole Approvals	06/10/2008	19/06/08	SOS-OLEP010-LET-00818		1	0	0	0	4,894	489	0	5,724	1A			
		Clear to issue all PCC drawings for completion, Pole and Pole Train Stop.	06/10/2009	19/10/08	25.1.201AH064		4	0	0	0	0	0	0					
		Finals Section 18 due to BE/EP not being completed in time.	08/10/2009	20/06/08	SOS-OLEP010-LET-00818		0	0	0	0	0	0	0					
				15/04/08	25.1.201AH063													
				27/06/08	25.1.201AH063													
				09/10/08	19/06/08	25.1.201AH063												
				23/10/08	19/10/08	25.1.201AH063												
				09/04/09	25/04/09	25.1.201AH063												
104		Final Material Requisitions (Pole)	10/10/2008	23/06/07	SOS-OLEP010-LET-00818		1	0	0	0	0	0	0		2A			
				14/10/09	19/10/09	25.1.201AH063		1	0	0	0	0	0					
105		Lighting Columns to be issued to the contractor at BE/EP approval	06/10/2008	08/06/08	SOS-OLEP010-LET-00818		1	0	0	0	0	0	0		5C			
		Lighting Columns to be issued to the contractor at BE/EP approval		17/10/08	25.1.201AH064		1	0	0	0	0	0	0		5A			
106		Section 17 Pole Approach - Material to be assigned to contractor at BE/EP approval	06/10/2008	20/06/08	SOS-OLEP010-LET-00820		1	0	0	0	0	0	0		1C			
		Material to be assigned to contractor at BE/EP approval		27/06/08	25.1.201AH063		0	0	0	0	0	0	0					
107		Stations 1A1 and 1A2 - SEC's proposed arrangements to be issued adjacent 4 C condition area.	08/10/2008	23/06/08	SOS-OLEP010-LET-00817		1	0	0	0	0	0	0		1A			
				27/06/08	19/06/08	25.1.201AH063												
108		Design the pile foundations to the Water of Lath Bridge to meet the existing 300 x 120mm egg shape combined	05/08/2008	13/11/08	SOS-OLEP010-LET-00818		1	4	27,896	0	27,896	0	0	32,615	5A			
				19/11/08	SOS-OLEP010-LET-00818													
				19/02/09	SOS-OLEP010-LET-00818													
				13/05/09	SOS-OLEP010-LET-00818													
				05/07/09	SOS-OLEP010-LET-00818													
				14/08/09	SOS-OLEP010-LET-00818													
				21/08/09	SOS-OLEP010-LET-00818													
				09/04/09	SOS-OLEP010-LET-00818													
				15/04/09	SOS-OLEP010-LET-00818													
				21/04/09	SOS-OLEP010-LET-00818													
				22/05/09	SOS-OLEP010-LET-00818													
				13/11/08	19/11/08	25.1.201AH063												
				19/11/08	19/11/08	25.1.201AH063												
				19/02/09	13/05/09	25.1.201AH063												
				05/07/09	09/04/09	25.1.201AH063												
				14/08/09	20/04/09	25.1.201AH063												
				21/08/09	09/04/09	25.1.201AH063												
			09/04/09	09/04/09	25.1.201AH063													

Ref. No.	No. of Change	Description	Date Raised	Date of Further Issues	Letter Ref	Approved in Principle?	Change Impact	Change Type	Change Method	Value Estimate (GBP)						Allocation of Cost	Change Order	Sections	Change Order (MBS)				
										Subtotal	Other P.P.	Construction Points	Other Points	Total	F. 10/21/14					F. 10/21/14	F. 10/21/14	F. 10/21/14	
112	08/10/2008	Revised location of OLE poles in Section 1A at the request of CEC.	08/10/2008	2306/08	SOS-LE001030-LET-03620																		
				2307/08	SOS-LE001030-LET-03620																		
				2308/08	SOS-LE001030-LET-03620																		
				2309/08	SOS-LE001030-LET-03620																		
				2310/08	SOS-LE001030-LET-03620																		
				2311/08	SOS-LE001030-LET-03620																		
				2312/08	SOS-LE001030-LET-03620																		
				2313/08	SOS-LE001030-LET-03620																		
				2314/08	SOS-LE001030-LET-03620																		
				2315/08	SOS-LE001030-LET-03620																		
113	09/10/2009	Only to issue of R.C Drawing for Plus of Leith Train Stop. Please refer to the R.C Drawing for Plus of the W&A Train Stop. Please refer to the R.C Drawing for Plus of the W&A Train Stop. Please refer to the R.C Drawing for Plus of the W&A Train Stop.	09/10/2009	2500/09	SOS-LE001030-LET-03014	TBA																	
				2501/09	SOS-LE001030-LET-03014																		
				2502/09	SOS-LE001030-LET-03014																		
				2503/09	SOS-LE001030-LET-03014																		
				2504/09	SOS-LE001030-LET-03014																		
				2505/09	SOS-LE001030-LET-03014																		
				2506/09	SOS-LE001030-LET-03014																		
				2507/09	SOS-LE001030-LET-03014																		
				2508/09	SOS-LE001030-LET-03014																		
				2509/09	SOS-LE001030-LET-03014																		
114	10/10/2009	Customers and Patrons Suspensions - routing of information. CEC's intent to adopt the are roads between Leithside Crescent and Leithside Avenue.	10/10/2009	2510/09	SOS-LE001030-LET-03620																		
				2511/09	SOS-LE001030-LET-03620																		
				2512/09	SOS-LE001030-LET-03620																		
				2513/09	SOS-LE001030-LET-03620																		
				2514/09	SOS-LE001030-LET-03620																		
				2515/09	SOS-LE001030-LET-03620																		
				2516/09	SOS-LE001030-LET-03620																		
				2517/09	SOS-LE001030-LET-03620																		
				2518/09	SOS-LE001030-LET-03620																		
				2519/09	SOS-LE001030-LET-03620																		
115	13/10/2008	Additional work arising from CEC's additional comments on Section 5C Technical Approval.	13/10/2008	2700/08	SOS-LE001030-LET-03000																		
				2701/08	SOS-LE001030-LET-03000																		
				2702/08	SOS-LE001030-LET-03000																		
				2703/08	SOS-LE001030-LET-03000																		
				2704/08	SOS-LE001030-LET-03000																		
				2705/08	SOS-LE001030-LET-03000																		
				2706/08	SOS-LE001030-LET-03000																		
				2707/08	SOS-LE001030-LET-03000																		
				2708/08	SOS-LE001030-LET-03000																		
				2709/08	SOS-LE001030-LET-03000																		

RTN INFRACO NOTIFICATION OF THE CHANGE (INTC)
CONFIDENTIAL

Ref. No.	IC Change Order Ref. No.	Description	Date Notified	Date of further issues	Letter Ref.	Agreed in Principle?	Change Impact		Change Method	Value Estimate (GBP)							Allocation of Cost	Change Order Ref. No.	
							Y/N	Y/N		Subtotal	On E.P.	Construction	Other	Total	1	2			3
148	16102008	PC Drawing Change (Section 10/24) RTN 1,2,3,4	16102008	230069	In NF CORR 258	Y (P40)	M	1	1,2,3	0	3,233,043	136,549	239,246	565,792	4,864,619	3,173,379	N/A	5A	0
				237008	In NF CORR 259														
				237009	In NF CORR 260														
				237010	In NF CORR 261														
				237011	In NF CORR 262														
				237012	In NF CORR 263														
				237013	In NF CORR 264														
				237014	In NF CORR 265														
				237015	In NF CORR 266														
				237016	In NF CORR 267														
				237017	In NF CORR 268														
				237018	In NF CORR 269														
149	16102008	PC Drawing Change (Section 10/24) RTN 1,2,3,4	16102008	230069	In NF CORR 258	TBA	M	1	1,2,3	0	1,071,665	78	79,525	187,891	1,342,200	N/A	5A	0	
				237008	In NF CORR 259														
				237009	In NF CORR 260														
				237010	In NF CORR 261														
				237011	In NF CORR 262														
				237012	In NF CORR 263														
				237013	In NF CORR 264														
				237014	In NF CORR 265														
				237015	In NF CORR 266														
				237016	In NF CORR 267														
				237017	In NF CORR 268														
				237018	In NF CORR 269														
151	16102008	PC Drawing Change (Section 10/24) RTN 1,2,3,4	16102008	230069	In NF CORR 258	Y	I	1	0	44,186	0	3,270	7,733	56,189	34,873	N/A	1B	0	
				237008	In NF CORR 259														
				237009	In NF CORR 260														
				237010	In NF CORR 261														
				237011	In NF CORR 262														
				237012	In NF CORR 263														
				237013	In NF CORR 264														
				237014	In NF CORR 265														
				237015	In NF CORR 266														
				237016	In NF CORR 267														
				237017	In NF CORR 268														
				237018	In NF CORR 269														
152	16102008	PC Drawing Change (Section 10/24) RTN 1,2,3,4	16102008	230069	In NF CORR 258	TBA	M	1	1,2,3	0	0	0	0	0	0	N/A	5A	0	
				237008	In NF CORR 259														
				237009	In NF CORR 260														
				237010	In NF CORR 261														
				237011	In NF CORR 262														
				237012	In NF CORR 263														
				237013	In NF CORR 264														
				237014	In NF CORR 265														
				237015	In NF CORR 266														
				237016	In NF CORR 267														
				237017	In NF CORR 268														
				237018	In NF CORR 269														

Ref.	No.	Rev.	In Change	Date of Issue	Description	Date Retired	Date of Further Issues	Letter Ref.	Approved in Principle?	Change Impact			Value Estimate (GBP)			Allocation of Cost			Location					
										Change Type	Type	Impact	Subtotal	Other P.	Contingency	Other P.	Contingency	Other P.		Contingency	Other P.	Contingency	Other P.	Contingency
152			ICC	16/10/2008	ICC Drawing changes for Lathcote Street Section 6 sheets 1 to 36	16/10/2008	23/01/09	SA 1201/02/03		I	M	1	123	23/01/09							SA 38/50			
							23/01/09																	
							23/01/09																	
							31/10/08																	
							31/10/08																	
							09/12/08																	
							13/12/08																	
							20/01/09																	
							18/01/09																	
							23/01/09																	
							23/01/09																	
							23/01/09																	
							153									ICC	16/10/2008	ICC Drawing changes SOLE Section 5 sheets 1 to 13				16/10/2008	23/01/09	SA 1201/02/04
23/01/09																								
23/01/09																								
31/10/08																								
31/10/08																								
09/12/08																								
13/12/08																								
20/01/09																								
18/01/09																								
23/01/09																								
23/01/09																								
23/01/09																								
154			ICC	16/10/2008	ICC Drawing changes Region 14 SA 126, 140	16/10/2008		23/01/09	SA 1201/02/03				I						M	1	123		23/01/09	
							23/01/09																	
							23/01/09																	
							31/10/08																	
							31/10/08																	
							09/12/08																	
							13/12/08																	
							20/01/09																	
							18/01/09																	
							23/01/09																	
							23/01/09																	
							23/01/09																	
							155								ICC	16/10/2008	ICC Drawing changes Region 14 SA 126, 140	16/10/2008				23/01/09	SA 1201/02/03	
23/01/09																								
23/01/09																								
31/10/08																								
31/10/08																								
09/12/08																								
13/12/08																								
20/01/09																								
18/01/09																								
23/01/09																								
23/01/09																								
23/01/09																								
156			ICC	16/10/2008	Survey of Existing Damages (Signal Laneway)	16/10/2008			15/01/09	SA 1201/02/03										I	I	4		
							20/01/09																	
							20/01/09																	
							20/01/09																	
							20/01/09																	
							20/01/09																	
							20/01/09																	
							20/01/09																	
							20/01/09																	
							20/01/09																	
							20/01/09																	
							20/01/09																	
							158							ICC	16/10/2008	Proposed Sign - Provide Over Road Facilities at Haymarket Station - Variant 1	16/10/2008	15/01/09					SA 1201/02/03	
20/01/09																								
20/01/09																								
20/01/09																								
20/01/09																								
20/01/09																								
20/01/09																								
20/01/09																								
20/01/09																								
20/01/09																								
20/01/09																								
20/01/09																								
20/01/09																								

ETN INFRACO NOTIFICATION of the CHANGE (NTC)
CONFIDENTIAL

Ref. No.	No Change Order / TO	Description	Date Notified	Date of further letters	Letter Ref	Agreed in Principle?	Change Record		Change Method	Value Estimate (GBP)					Allocation of Cost	Location							
							Type	Type		Other P/Prms	Contractor Prms	Other P/Prms	Total	I. 1234567			E. 1234567	Sum of V. E. 1. 1234567					
																			1.4.1	1.4.2	1.4.3	1.4.4	1.4.5
152	19	Mechanical Sign - Relocation of Aspect Mountings	16/10/2008	15/10/08	S1-F00102681 I/NF CORR 222	Y	I	0	1	4	0	3718	0	275	0	3993	0	3993	DPS	3	AU	15/7/00	
				16/10/08																			S1-F00102682 I/NF CORR 652
				20/10/08																			S1-F00102683 I/NF CORR 657
				20/10/08																			S1-F00102684 I/NF CORR 658
				20/10/08																			S1-F00102685 I/NF CORR 659
				20/10/08																			S1-F00102686 I/NF CORR 660
				20/10/08																			S1-F00102687 I/NF CORR 661
				20/10/08																			S1-F00102688 I/NF CORR 662
				20/10/08																			S1-F00102689 I/NF CORR 663
				20/10/08																			S1-F00102690 I/NF CORR 664
153	30	JFC Drawing Changes - Edinburgh Jaws Bridge	16/10/2008	20/10/08	S1-F00102691 I/NF CORR 258	TBA	I	M	1	1,2,3	0	228315	0	0	0	39005	0	268383	N/A	56	0		
				20/10/08																		S1-F00102692 I/NF CORR 259	
				20/10/08																		S1-F00102693 I/NF CORR 260	
				20/10/08																		S1-F00102694 I/NF CORR 261	
				20/10/08																		S1-F00102695 I/NF CORR 262	
				20/10/08																		S1-F00102696 I/NF CORR 263	
				20/10/08																		S1-F00102697 I/NF CORR 264	
				20/10/08																		S1-F00102698 I/NF CORR 265	
				20/10/08																		S1-F00102699 I/NF CORR 266	
				20/10/08																		S1-F00102700 I/NF CORR 267	
154	35	Mechanical Sign - Relocation of Aspect Mountings	16/10/2008	15/10/08	S1-F00102701 I/NF CORR 255	Y	I	1	4	0	0	1410000	0	0	0	1410000	0	1410000	N/A	AE	0		
				16/10/08																		S1-F00102702 I/NF CORR 256	
				16/10/08																		S1-F00102703 I/NF CORR 257	
				16/10/08																		S1-F00102704 I/NF CORR 258	
				16/10/08																		S1-F00102705 I/NF CORR 259	
				16/10/08																		S1-F00102706 I/NF CORR 260	
				16/10/08																		S1-F00102707 I/NF CORR 261	
				16/10/08																		S1-F00102708 I/NF CORR 262	
				16/10/08																		S1-F00102709 I/NF CORR 263	
				16/10/08																		S1-F00102710 I/NF CORR 264	
155	25	Mechanical Sign - Relocation of Aspect Mountings	24/08/2008	20/10/08	S1-F00102711 I/NF CORR 268	TBA	I	1	4	0	0	14900	0	0	0	14900	0	14900	N/A	1A	17,023		
				20/10/08																		S1-F00102712 I/NF CORR 269	
				20/10/08																		S1-F00102713 I/NF CORR 270	
				20/10/08																		S1-F00102714 I/NF CORR 271	
				20/10/08																		S1-F00102715 I/NF CORR 272	
				20/10/08																		S1-F00102716 I/NF CORR 273	
				20/10/08																		S1-F00102717 I/NF CORR 274	
				20/10/08																		S1-F00102718 I/NF CORR 275	
				20/10/08																		S1-F00102719 I/NF CORR 276	
				20/10/08																		S1-F00102720 I/NF CORR 277	
156	8	Mechanical Sign - Relocation of Aspect Mountings	20/10/2008	20/10/08	S1-F00102721 I/NF CORR 250	Y	I	1	4	0	0	14900	0	1073	0	2538	0	17581	N/A	1A	17,023		
				20/10/08																		S1-F00102722 I/NF CORR 251	
				20/10/08																		S1-F00102723 I/NF CORR 252	
				20/10/08																		S1-F00102724 I/NF CORR 253	
				20/10/08																		S1-F00102725 I/NF CORR 254	
				20/10/08																		S1-F00102726 I/NF CORR 255	
				20/10/08																		S1-F00102727 I/NF CORR 256	
				20/10/08																		S1-F00102728 I/NF CORR 257	
				20/10/08																		S1-F00102729 I/NF CORR 258	
				20/10/08																		S1-F00102730 I/NF CORR 259	

Ref. No.	IC Change Order Ref. No.	Description	Date Notified	Date of further issues	Letter Ref.	Agreed in Principle?	Change Record		Change Type	Change Method	Value Estimate (GBP)						Allocation of Cost	Location			
							1st Chn	2nd No22			3rd No22	4th No22	5th No22	6th No22	7th No22	8th No22			9th No22	10th No22	11th No22
152	96	Maintenance Works to Westport Customer Building at Murrayfield.	20/02/2008	02/02/08	25.1.20/16/06	Y	1	1	4	1,2,3	0	141,831	10,481	24,788	191,681	24,788	186,275	24,788	1	5A	186,275
				03/02/08	25.1.20/16/06																
				04/02/08	25.1.20/16/06																
				05/02/08	25.1.20/16/06																
				06/02/08	25.1.20/16/06																
				07/02/08	25.1.20/16/06																
				08/02/08	25.1.20/16/06																
				09/02/08	25.1.20/16/06																
				10/02/08	25.1.20/16/06																
				11/02/08	25.1.20/16/06																
				12/02/08	25.1.20/16/06																
				13/02/08	25.1.20/16/06																
				14/02/08	25.1.20/16/06																
				15/02/08	25.1.20/16/06																
				153	18																
24/02/08	25.1.20/16/07																				
25/02/08	25.1.20/16/07																				
26/02/08	25.1.20/16/07																				
27/02/08	25.1.20/16/07																				
28/02/08	25.1.20/16/07																				
29/02/08	25.1.20/16/07																				
30/02/08	25.1.20/16/07																				
31/02/08	25.1.20/16/07																				
01/03/08	25.1.20/16/07																				
02/03/08	25.1.20/16/07																				
03/03/08	25.1.20/16/07																				
04/03/08	25.1.20/16/07																				
05/03/08	25.1.20/16/07																				
154	48	Relocation of Police Box Coffee Bar - Priority Place	20/02/2008			23/02/08	25.1.20/16/07	Y	1	1	1	1,2,3	0	7,889	787	1,277	9,229	1,267	8,000	N/A	N/A
				24/02/08	25.1.20/16/07																
				25/02/08	25.1.20/16/07																
				26/02/08	25.1.20/16/07																
				27/02/08	25.1.20/16/07																
				28/02/08	25.1.20/16/07																
				29/02/08	25.1.20/16/07																
				30/02/08	25.1.20/16/07																
				31/02/08	25.1.20/16/07																
				01/03/08	25.1.20/16/07																
				02/03/08	25.1.20/16/07																
				03/03/08	25.1.20/16/07																
				04/03/08	25.1.20/16/07																
				05/03/08	25.1.20/16/07																
				155	73	Construction and alteration of existing building at Edinburgh Leith	20/02/2008														
24/02/08	25.1.20/16/07																				
25/02/08	25.1.20/16/07																				
26/02/08	25.1.20/16/07																				
27/02/08	25.1.20/16/07																				
28/02/08	25.1.20/16/07																				
29/02/08	25.1.20/16/07																				
30/02/08	25.1.20/16/07																				
31/02/08	25.1.20/16/07																				
01/03/08	25.1.20/16/07																				
02/03/08	25.1.20/16/07																				
03/03/08	25.1.20/16/07																				
04/03/08	25.1.20/16/07																				
05/03/08	25.1.20/16/07																				
156	29	Contract with Adam Murray for Training and Living Neighbourhood Assessments.	15/02/2008					02/02/08	25.1.20/16/07	Y	1	1	1	4	0	22,277	2,226	1,648	30,252	3,896	64,809
				03/02/08	25.1.20/16/07																
				04/02/08	25.1.20/16/07																
				05/02/08	25.1.20/16/07																
				06/02/08	25.1.20/16/07																
				07/02/08	25.1.20/16/07																
				08/02/08	25.1.20/16/07																
				09/02/08	25.1.20/16/07																
				10/02/08	25.1.20/16/07																
				11/02/08	25.1.20/16/07																
				12/02/08	25.1.20/16/07																
				13/02/08	25.1.20/16/07																
				14/02/08	25.1.20/16/07																
				15/02/08	25.1.20/16/07																

ETN INFRACO NOTIFICATION of the CHANGE (INTC) CONFIDENTIAL



Table with columns: Intc Ref., Intc Title, Date Retired, Description, Date Retired, Letter Ref., Agreed in Principle?, Change Record, Type, Change Type, Includes Method, SCS, Bridge, Signals, C/P, Subtotal, Value Estimate (GBP), Other Payments, Total, Allocation of Cost, Location, Change Order Refs.

Ref.	No.	No. of Change	Description	Date Notified	Date of further letters	Letter Ref.	Agreed in Principle?	Change Impact	Change Type	Change Method	Value Estimate (GBP)							Allocation of Cost	Change Order Sections				
											2025	2026	2027	2028	2029	2030	2031			2032	2033	2034	
101	101	14	Discovery of concrete encased lighting cable - Change 239 RNS	13/11/2026	201168	25.1201AEN/020																	
					0111208	In NF CORR 404																	
					1811208	25.1201AEN/023																	
					200169	In NF CORR 612																	
					230269	In NF CORR 724																	
102	102	14	Discovery of Cable & Wireless ducts - Change 108	17/11/2026	211168	25.1201AEN/020																	
					1811208	In NF CORR 454																	
					1911208	25.1201AEN/027																	
					200169	In NF CORR 612																	
					230169	In NF CORR 724																	
103	103	48	Discovery of Pipework on each line - Change 333 RNS	13/11/2026	201168	25.1201AEN/020																	
					1811208	In NF CORR 454																	
					1911208	25.1201AEN/027																	
					200169	In NF CORR 612																	
					230169	In NF CORR 724																	
104	104	45	Discovery of Duct Crossing - Change 256 RNS	13/11/2026	201168	25.1201AEN/020																	
					1811208	In NF CORR 454																	
					1911208	25.1201AEN/027																	
					200169	In NF CORR 612																	
					230169	In NF CORR 724																	
105	105		Discovery of concrete encased lighting cable crossing bridge structure on adjacent formation and crossing each line - Change 246-258 RNS	13/11/2026	201168	25.1201AEN/020																	
					1811208	In NF CORR 454																	
					1911208	25.1201AEN/027																	
					200169	In NF CORR 612																	
					230169	In NF CORR 724																	
106	106		Line Aug Street works required by CEC outside the Limits of Deviation	06/11/08	071168	25.1201AEN/020																	
					271168	In NF CORR 437																	
					190169	In NF CORR 454																	
					130269	25.1201AEN/020																	
					240269	In NF CORR 798																	
107	107		Cycle path near Gyle railway Wharfedale shared cycleway required by CEC, Wharfedale Bx Limits of Deviation	07/11/08	071168	25.1201AEN/020																	
					280169	In NF CORR 437																	
					130269	25.1201AEN/020																	
					250269	In NF CORR 724																	
					270269	In NF CORR 798																	

RTN IMPACT NOTIFICATION of the CHANGE (INTC)
CONFIDENTIAL

Ref. No.	No. of Change Order	Date	Description	Date Initiated	Date of further issues	Letter Ref.	Approved in Principle?	Change Impact		Change Type	Change Method	Value Estimate (GBP)						Allocation of Cost	Change Order Sections			
								Y/N	Y/N			Subtotal	Other P.	Contractor	Other P.	Subtotal	Other P.			Contractor	Other P.	Subtotal
215	30		Simulation and alteration of existing bus loop at each WHS level - Change 100 RHS	13/11/2008	09/12/08 3001/09 2402/09 2502/09 1404/09 3007/09		Y	Y	0	186,567	0	0	186,567	13,000	32,649	251,679	0	251,679	N/A	1B	0	
216	31		Discovery of alternative water pipe above formation level - Change 205 RHS	13/11/2008	20/11/08 07/12/08 18/12/08 20/01/09 13/02/09 20/02/09 16/04/09 22/04/09 03/05/09		Y	Y	0	459	0	0	459	34	80	619	539	80	VPS	2	1B	539
217			Discovery of two ducts above formation level and existing bus loop - Change 200 RHS	13/11/2008	20/11/08 12/12/08 19/12/08 25/12/08 25/01/09 13/02/09 07/04/09 14/04/09 25/12/08		Y	Y	0	0	0	0	0	0	0	0	0	0	VPS	2	1B	0
218	32		Discovery of 2 No. LV and 1 No. LV cables above formation level - Change 100 RHS	13/11/2008	20/11/08 12/12/08 19/12/08 25/12/08 25/01/09 13/02/09 07/04/09 14/04/09 25/12/08		Y	Y	0	229	0	0	229	17	40	308	258	52	VPS	2	1B	258
219			Discovery of Hydrant above formation level - Change 177 RHS	13/11/2008	19/12/08 01/01/09		N	Y	0	0	0	0	0	0	0	0	0	0	VPS	2	1B	0
220	33		Discovery of 1000mm excavation pitwork above formation level - Change 181 RHS	13/11/2008	20/11/08 01/12/08 18/12/08 20/01/09 13/02/09 20/02/09 16/04/09 22/04/09 03/05/09		Y	Y	0	68	0	0	68	7	12	92	80	12	VPS	2	1B	80
221			Discovery of 1000mm excavation pitwork above formation level - Change 154 RHS	13/11/2008	20/11/08 01/12/08 18/12/08 20/01/09 13/02/09 20/02/09 16/04/09 22/04/09 03/05/09		N/A	N/A	0	0	0	0	0	0	0	0	0	0	VPS	2	1B	0
222	66		Discovery of pipe area a hydrant facing the one bus loop - Change 200 RHS	13/11/2008	20/11/08 07/12/08 18/12/08 20/01/09 13/02/09 20/02/09 16/04/09 22/04/09 03/05/09		Y	Y	0	627	0	0	627	46	110	846	618	228	VPS	2	1B	618

Ref.	No.	Is Change Owner (LO)?	Description	Date Notified	Date of Issue	Letter Ref.	Approved in Principle?	Change Impact	Change Type	Change Method	Value Estimate (GBP)						Allocation of Cost	Change Order (MBS)			
											Subtotal	Other P.	Contingency	Other P.	Contingency	Other P.			Contingency	Other P.	Contingency
203	34		Stocking of main cabinet - Change 303 RBS	1/11/2008	201168	SI-F01/06/051	Y	I	I	4	0	2,362	0	2,362	0	413	0	2,169	2	1,018	
					011200	SI-NF CORR 411															
					200169	SI-NF CORR 411															
					181208	SI-NF CORR 411															
					200169	SI-NF CORR 411															
					130209	SI-NF CORR 411															
					200209	SI-NF CORR 411															
					160309	SI-NF CORR 411															
					080409	SI-NF CORR 411															
					080409	SI-NF CORR 411															
120509	SI-NF CORR 411																				
204			Stocking of Substation Power Cables - Change 303 RBS	1/11/2008	201168	SI-F01/06/051	N/A	N/A	N/A	N/A	0	0	0	0	0	0	0	0	0	0	
					090109	SI-NF CORR 430															
					200169	SI-NF CORR 430															
					181208	SI-NF CORR 430															
					200169	SI-NF CORR 430															
					130209	SI-NF CORR 430															
					200209	SI-NF CORR 430															
					160309	SI-NF CORR 430															
					080409	SI-NF CORR 430															
					080409	SI-NF CORR 430															
120509	SI-NF CORR 430																				
205	35		Security of Substation Access - Changes arising	1/11/2008	201168	SI-F01/06/051	Y	I	I	4	0	264	0	264	0	46	0	46	N/A	10	
					090109	SI-NF CORR 430															
					200169	SI-NF CORR 430															
					181208	SI-NF CORR 430															
					200169	SI-NF CORR 430															
					130209	SI-NF CORR 430															
					200209	SI-NF CORR 430															
					160309	SI-NF CORR 430															
					080409	SI-NF CORR 430															
					080409	SI-NF CORR 430															
120509	SI-NF CORR 430																				
206			Operational Design Review of Depot - Changes arising	25/11/2008	200209	SI-NF CORR 420	TBA	D	I	12,234	0	0	0	0	0	0	0	0	N/A	6	
					100709	SI-NF CORR 420															
					200209	SI-NF CORR 420															
					300709	SI-NF CORR 420															
					310709	SI-NF CORR 420															
					091208	SI-NF CORR 420															
					300709	SI-NF CORR 420															
					091208	SI-NF CORR 420															
					300709	SI-NF CORR 420															
					091208	SI-NF CORR 420															
300709	SI-NF CORR 420																				
207			Operational Design Review of Hydrant - Changes arising	25/11/2008	200209	SI-NF CORR 420	TBA	D	I	12,234	0	0	0	0	0	0	0	0	N/A	6	
					100709	SI-NF CORR 420															
					200209	SI-NF CORR 420															
					300709	SI-NF CORR 420															
					310709	SI-NF CORR 420															
					091208	SI-NF CORR 420															
					300709	SI-NF CORR 420															
					091208	SI-NF CORR 420															
					300709	SI-NF CORR 420															
					091208	SI-NF CORR 420															
300709	SI-NF CORR 420																				
208			Allocation of bus stop within LOO at Pinnis Mill	01/12/08	091208	SI-NF CORR 430	Y	I	I	4	5,060	0	0	5,060	0	0	0	5,941	N/A	10	
					100709	SI-NF CORR 430															
					200209	SI-NF CORR 430															
					300709	SI-NF CORR 430															
					310709	SI-NF CORR 430															
					091208	SI-NF CORR 430															
					300709	SI-NF CORR 430															
					091208	SI-NF CORR 430															
					300709	SI-NF CORR 430															
					091208	SI-NF CORR 430															
300709	SI-NF CORR 430																				
209			IFC Drawing Changes - Section IC drainage	1/11/2008	130109	SI-NF CORR 381	TBA	M	I	12,3	0	0	0	0	0	0	0	0	0	N/A	10
					050209	SI-NF CORR 381															
					180209	SI-NF CORR 381															
					180209	SI-NF CORR 381															
					200209	SI-NF CORR 381															
					200209	SI-NF CORR 381															
					200209	SI-NF CORR 381															
					200209	SI-NF CORR 381															
					200209	SI-NF CORR 381															
					200209	SI-NF CORR 381															
200209	SI-NF CORR 381																				
210			IFC Drawing Changes - Section IC drainage	1/11/2008	130109	SI-NF CORR 381	TBA	M	I	12,3	0	0	0	0	0	0	0	0	0	N/A	10
					050209	SI-NF CORR 381															
					180209	SI-NF CORR 381															
					180209	SI-NF CORR 381															
					200209	SI-NF CORR 381															
					200209	SI-NF CORR 381															
					200209	SI-NF CORR 381															
					200209	SI-NF CORR 381															
					200209	SI-NF CORR 381															
					200209	SI-NF CORR 381															
200209	SI-NF CORR 381																				
211			IFC Drawing Changes - Section IC drainage	1/11/2008	130109	SI-NF CORR 381	TBA	M	I	12,3	0	0	0	0	0	0	0	0	0	N/A	10
					050209	SI-NF CORR 381															
					180209	SI-NF CORR 381															
					180209	SI-NF CORR 381															
					200209	SI-NF CORR 381															
					200209	SI-NF CORR 381															
					200209	SI-NF CORR 381															
					200209	SI-NF CORR 381															
					200209	SI-NF CORR 381															
					200209	SI-NF CORR 381															
200209	SI-NF CORR 381																				
212			IFC Drawing Changes - Section IC drainage	1/11/2008	130109	SI-NF CORR 381	TBA	M	I	12,3	0	0	0	0	0	0	0	0	0	N/A	10
					050209	SI-NF CORR 381															
					180209	SI-NF CORR 381															
					180209	SI-NF CORR 381															
					200209	SI-NF CORR 381															
					200209	SI-NF CORR 381															
					200209	SI-NF CORR 381															
					200209	SI-NF CORR 381															
					200209	SI-NF CORR 381															
					200209	SI-NF CORR 381															
200209	SI-NF CORR 381																				
213			IFC Drawing Changes - Section IC drainage	1/11/2008	130109	SI-NF CORR 381	TBA	M	I	12,3	0	0	0	0	0	0	0	0	0	N/A	10
					050209	SI-NF CORR 381															
					180209	SI-NF CORR 381															
					180209	SI-NF CORR 381															
					200209	SI-NF CORR 381															
					200209	SI-NF CORR 381															
					200209	SI-NF CORR 381															
					200209	SI-NF CORR 381															
					200209	SI-NF CORR 381															
					200209	SI-NF CORR 381															
200209	SI-NF CORR 381																				
214			IFC Drawing Changes - Section IC drainage	1/11/2008	130109	SI-NF CORR 381	Y	I	I	4	4,864	0	4,864	0	0	861	0	6,562	2	18	
					050209	SI-NF CORR 381															
					180209	SI-NF CORR 381															
					180209	SI-NF CORR 381															
					200209	SI-NF CORR 381															
					200209	SI-NF CORR 381															
					200209	SI-NF CORR 381															
					200209	SI-NF CORR 381															
					200209	SI-NF CORR 381															
					200209	SI-NF CORR 381															
200209	SI-NF CORR 381																				
215			IFC Drawing Changes - Section IC drainage	1/11/2008	130109	SI-NF CORR 381	Y	I	I	4	0	0	0	0	0	0	0	0	0	N/A	10
					050209	SI-NF CORR 381															
					180209	SI-NF CORR 381															
					180209	SI-NF CORR 381															
					200209	SI-NF CORR 381															
					200209	SI-NF CORR 381															
					200209	SI-NF CORR 381															
					200209	SI-NF CORR 381															
					200209	SI-NF CORR 381															
					200209	SI-NF CORR 381															
200209	SI-NF CORR 381																				

ETN INFRACO NOTIFICATION OF CHANGE (NOC) CONFIDENTIAL

Table with columns: Ref, Rev, Issue Date, Description, Date Notified, Date of further review, Letter Ref, Agreed in Principle?, Change Record, Change Type, Change Method, Value Estimate, Allocation of Cost, Location, etc.

Table with columns: Change Order, Sections, Change Order Ref

Ref.	Ref. No.	Is Change Order (TC)	Description	Date Raised	Date of Further	Letter Ref.	Approved in Principle?	Impact	Change Type	Change Method	Value Estimate (GBP)										Allocation of Cost	Location	Change Order Refs.						
											SOS	Effage	Signals	GP	Sub-stn	Overhead	Ch P	Construction	Other	Total				F. 2024	E. 2024	Sum 21-24	W024	W023	Site No.
245			Worked Programme due to the issue of SOS Change programme V26	10/12/2023	19/01/24		TBA	N/A	M	1	4	0	0	0	0	0	0	0	0	0	0	0	0	0	0	NA	AI	0	
247			Worked Programme due to the issue of SOS Change programme V17	10/12/2023	19/01/24		TBA	N/A	M	1	4	0	0	0	0	0	0	0	0	0	0	0	0	0	0	NA	AI	0	
248			Worked Programme due to the issue of SOS Change programme V28	10/12/2023	19/01/24		TBA	N/A	M	1	4	0	0	0	0	0	0	0	0	0	0	0	0	0	0	NA	AI	0	
249			Worked Programme due to the issue of SOS Change programme V29	10/12/2023	19/01/24		TBA	N/A	M	1	4	0	0	0	0	0	0	0	0	0	0	0	0	0	0	NA	AI	0	
250			With Wk - Changes 100-300 + add on work items to add on 'change' program	21/04/2024	22/02/24		TBA	1	M	1	3A	0	49,249	0	0	49,249	4,086	3,622	8,686	68,922	0	0	0	0	0	0	NA	18/1C	0
251			FC Drawing Changes - Section TC OLE Layed	12/12/2023	25/02/24		TBA	0	M	1	1,2,3	0	0	0	0	0	0	0	0	0	0	0	0	0	0	NA	1C	0	
252			FC Drawing Changes - Section TC Track Horizontal Alignment	12/12/2023	25/02/24		TBA	0	M	1	1,2,3	0	0	0	0	0	0	0	0	0	0	0	0	0	0	NA	1C	0	
253			FC Drawing Changes - Section TC Track Vertical Alignment	12/12/2023	25/02/24		TBA	0	M	1	1,2,3	0	0	0	0	0	0	0	0	0	0	0	0	0	0	NA	1C	0	
254			FC Drawing Changes - Section TC Track Management	12/12/2023	25/02/24		TBA	0	M	1	1,2,3	0	0	0	0	0	0	0	0	0	0	0	0	0	0	NA	1C	0	
255			Review all of sites of materials from central reserve on Prince Street	12/12/2023	25/02/24		TBA	0	M	1	3	0	0	0	0	0	0	0	0	0	0	0	0	0	0	NA	1C,1D	0	
256			Additional Work at East Lothian - Changes to AUM Working	09/12/2023	25/02/24		NA	NA	M	1	4	0	0	0	0	0	0	0	0	0	0	0	0	0	0	NA	1B	0	
257	28	44	FC Drawing Changes - Section TC Track Management	09/12/2023	12/12/23		Y	1	M	1	1	1,784	0	0	0	0	0	0	0	0	0	0	0	0	0	0	NA	1A, 1,2,3	0
258	27		FC Drawing Changes - Section TC Track Management	09/12/2023	12/12/23		Y	1	M	1	4	49,922	934,166	47,967	0	1,023,043	4,892	72,156	183,477	1,262,768	1,947,264	214,815	0	0	0	0	NA	1A, 1,2,3	0

ETN IMPACT NOTIFICATION OF THE CHANGE (INTC)
CONFIDENTIAL

Chg. Ref.	Chg. Ref. No.	Chg. Ref. Title	Date Rtd	Description	Date Rtd	Date of further Data	Letter Ref	Approved in Principle?	Type	Change Type	Change Method	Value Estimate (GBP)					Allocation of Cost	Change Order Sections						
												2023	2024	2025	2026	2027			Other Parties	Total	Other Parties	Total		
222	72	SC/way at Edinburgh Park Station repositioned across the LLOD	13/12/26					TBA	M	1	1.2.3	11,867	35,998	0	0	47,864	1,187	3,539	6,934	6,748	N/A	5B	52,095	
223	34	RF Drawing Changes - Section 18 - Balfor Street Item Skip	12/12/26					Y	M	1	4	0	1,098	0	0	1,098	109	30	190	1,465	365	N/A	1B	1,110
224		RF Drawing Changes - Section 18 - Balfor Street Item Skip	12/12/26					Y	M	1	1.2.3	0	0	0	0	0	0	0	0	0	0	N/A	1B	0
225		RF Drawing Changes - Section 5B - Track Drainage	02/03/26					TBA	M	1	1.2.3	1,504,600	1,153,200	0	0	1,153,200	66	85,341	20,821	1,440,422	N/A	N/A	5B	0
226		RF Drawing Changes - Section 1A - Victoria Dock Bridge	15/12/26					TBA	M	1	1.2.3	0	0	0	0	0	0	0	0	0	N/A	1A	0	
227		RF Drawing Changes - Edinburgh General Arrangement - Section 2A Access Retaining Wall - Verity House Accommodation Works	07/05/2025					TBA	M	1	1.2.3	0	0	0	0	0	0	0	0	0	N/A	1A, 1B, 1C, 1E	0	
228	25	Underway Monthly Track Monitoring of Network Rail Depots - Structures on East Coast North Line in vicinity of Gogar Depot	16/12/2026					Y	M	4	1.2.3	0	69,291	0	0	69,291	0	4,906	11,601	82,797	64,798	VPS	2	0
229		Underway Monthly Track Monitoring of Network Rail Depots - Structures on East Coast North Line in vicinity of Gogar Depot	16/12/2026					Y	M	1	3	0	3,800	0	0	3,800	268	295	697	5,369	697	N/A	6	4,673
230		Carry out Scottish Water Intervention at Gogar Roundabout	18/12/2026					Y	M	1	3	0	79,736	0	0	79,736	9,574	5,905	13,264	102,170	62,833	VPS	5C	0
231		Carry out Scottish Power Intervention at Gogar Roundabout	18/12/2026					Y	M	1	3	0	10,448	0	0	10,448	0	773	1,128	13,350	VPS	5C	0	

ETN/INR/CAO NOTIFICATION OF CHANGE (NOC)
CONFIDENTIAL



Change Order No.	Ref. No.	Is Change Order LC?	Description	Date Notified	Date of further Issues	Letter Ref	Approved in Principle?	Change Order Impact		Change Order Method	Value Estimate (GBP)						Change Order Sections (BACS)	Location																																		
								LCY Chn	Sett No/Est		Other Primes	Construction Primes	Chk P.P.	Salaries	Subcontract	Materials			Other Primes	Construction Primes	Chk P.P.	Salaries	Subcontract	Materials																												
20	202		Construction using from Framework Development Workshop	18/12/2008	07/01/09	IN WF CORR 841	Y	1	I	1	12.3	318,000	0	0	0	21,309	371,000	0	0	N/A	0				AI	371,000																										
					07/01/09	IN WF CORR 745																																														
					07/01/09	IN WF CORR 749																																														
					11/02/09	IN WF CORR 750																																														
					18/02/09	IN WF CORR 751																																														
19	211		BDS Framework - Private and Estimate for drainage of LV Plant and Vents supplied existing tram track	17/02/2009	07/01/09	IN WF CORR 844	Y	1	M	1	3	4,500	0	0	0	333	789	0	0	5,629	0						5C	0																								
					07/01/09	IN WF CORR 845																																														
					07/01/09	IN WF CORR 846																																														
					07/01/09	IN WF CORR 847																																														
					12/02/09	IN WF CORR 848																																														
					12/02/09	IN WF CORR 849																																														
11	222		SC&P Construction Details - Construction Methodology Statements for Establishing Ground Conditions Required for reconstruction	18/12/2008	07/01/09	IN WF CORR 746	Y	1	M	1	12.3	317,236	0	0	0	21,462	372,640	0	0	N/A	0						AI	372,640																								
					07/01/09	IN WF CORR 747																																														
					07/01/09	IN WF CORR 748																																														
					07/01/09	IN WF CORR 749																																														
					07/01/09	IN WF CORR 750																																														
					07/01/09	IN WF CORR 751																																														
					07/01/09	IN WF CORR 752																																														
					10/02/09	IN WF CORR 753																																														
					13/02/09	IN WF CORR 754																																														
					18/02/09	IN WF CORR 755																																														
					68	223							Organize Reaching with V&A - No design to accommodate Water Mains and Gas Mains	13/07/2009	18/02/09	IN WF CORR 850	Y	1	I	4	77,308	77,308	0	0	0	5,721	13,529	0	0	N/A	13,529	0					5B	83,029														
18/02/09	IN WF CORR 851																																																			
18/02/09	IN WF CORR 852																																																			
18/02/09	IN WF CORR 853																																																			
21	224		Organize Reaching with V&A - No design to accommodate Water Mains and Gas Mains	13/07/2009	18/02/09	IN WF CORR 854	Y	1	M	3	380	662	0	0	0	1,042	39	0	0	N/A	1,157	0					7	1,157																								
					18/02/09	IN WF CORR 855																																														
					18/02/09	IN WF CORR 856																																														
					18/02/09	IN WF CORR 857																																														
					18/02/09	IN WF CORR 858																																														
					18/02/09	IN WF CORR 859																																														
					18/02/09	IN WF CORR 860																																														
					18/02/09	IN WF CORR 861																																														
					18/02/09	IN WF CORR 862																																														
					18/02/09	IN WF CORR 863																																														
					18/02/09	IN WF CORR 864																																														
					18/02/09	IN WF CORR 865																																														
					20	225							Organize Short Construction Works - deliver to traffic during construction works	18/07/2009	15/01/09	ET/INSTR/15-01-0000302	Y	1	I	3	5,576	5,576	0	0	0	0	0	0	0	0	410	976	0	0	0	0	0	0														
															15/01/09	IN WF CORR 792																																				
15/01/09	IN WF CORR 793																																																			
20	226		GAN, Tunnel - B&A Interface	18/07/2009	18/02/09	IN WF CORR 866	Y	1	M	1	12.3	5,912	0	0	0	5,912	0	0	0	0	0	0	0	0	0	0	0	0																								
					18/02/09	IN WF CORR 867																																														
					18/02/09	IN WF CORR 868																																														
					18/02/09	IN WF CORR 869																																														
					18/02/09	IN WF CORR 870																																														
20	227		Gain Supply Change to the bus Station Payment and	18/07/2009	23/02/09	SG-SLE0135-SM-LET-01402	N/A	N/A	0	1	0	0	0	0	0	0	0	0	0	0	0	0	0	0	0	0	0	0	0																							
					05/03/09	ET/INSTR/05-03-0000036																																														
					12/03/09	IN WF CORR 871																																														
					18/03/09	IN WF CORR 872																																														
					18/03/09	IN WF CORR 873																																														
					27/03/09	IN WF CORR 874																																														
					28/03/09	IN WF CORR 875																																														
28/03/09	IN WF CORR 876																																																			
20	228		Align Tramway - Canary Wharf in options	20/07/2009	27/03/09	IN WF CORR 877	Y	1	M	4	12.3	42,364	0	0	0	4,296	0	0	0	0	0	0	0	0	0	0	0	0																								
					28/03/09	IN WF CORR 878																																														
					01/04/09	IN WF CORR 879																																														
					02/04/09	SG-SLE0135-SM-LET-01404																																														
					02/04/09	IN WF CORR 880																																														
					02/04/09	IN WF CORR 881																																														
					04/04/09	IN WF CORR 882																																														
18/05/09	IN WF CORR 883																																																			

CEC00624408_0178

Ref. No.	IC Change Order Ref. No.	Description	Date Initiated	Date of further Issues	Letter Ref.	Approved in Principle?	Change Type		Change Method	Value Estimate (GBP)						Allocation of Cost	Sections	Change Order Ref. No.		
							IC Type	IC Sub-Type		Subtotal	On P.P.	Construction	Other	Primes	Total				1.0000	2.0000
221	37	Signal CAB (Road) New Wiring	05/02/2019	17/02/19 14/03/19 24/03/19 09/04/19 17/04/19 25/04/19 05/05/19	25.1.201/05/143 In NE CORR 10/0 In NE CORR 12/2/19 25.1.201/06/1221 In NE CORR 14/2/19 25.1.201/07/121 In NE CORR 15/1 18/03/19 25.1.201/08/1998 In NE CORR 16/2 09/04/19 25.1.201/09/2229 In NE CORR 17/2/19 25.1.201/10/1521 In NE CORR 18/2/19	Y	M	1	3.4	0	990	0	0	173	1,336	1,162	173	N/A	7A	1,362
224	38	Reinstate access ramp at Gogar Depot	03/02/2019	09/02/19 18/03/19 23/03/19 09/04/19 25/04/19	25.1.201/07/1571 In NE CORR 19/2 25.1.201/08/1998 In NE CORR 20/2/19 25.1.201/09/2229 In NE CORR 21/2/19	Y	M	1	4	8,250	0	0	1,444	9,694	8,507	1,797	N/A	7A	8,207	
225	30	Carry out works to protect existing 30kV span main at Gogar 12	06/02/2019	09/02/19 18/03/19 23/03/19 09/04/19 25/04/19	25.1.201/08/1576 In NE CORR 22/2 25.1.201/09/2229 In NE CORR 23/2/19 25.1.201/10/1521 In NE CORR 24/2/19	Y	M	1	3.4	12,300	0	0	2,188	14,123	1,362	VPS	7A	14,123		
226	39	Formation Level of Gogarburn Bridge West Abutment	11/02/2019	12/02/19 09/03/19 17/03/19 24/03/19 29/03/19	25.1.201/08/1585 In NE CORR 25/2 25.1.201/09/2229 In NE CORR 26/2/19 25.1.201/10/1521 In NE CORR 27/2/19	Y	M	1	3.4	14,892	0	0	2,468	17,601	11,557	6,044	N/A	7A	11,557	
227	40	Formation Level of Gogarburn Bridge East Abutment	11/02/2019	12/02/19 09/03/19 17/03/19 24/03/19 29/03/19	25.1.201/07/1556 In NE CORR 28/2 25.1.201/08/1576 In NE CORR 29/2 25.1.201/09/2229 In NE CORR 30/2/19	Y	M	1	3.4	8,266	0	0	1,447	10,224	7,200	3,044	N/A	7A	7,200	
228		Reinforce access abutments to Road	18/02/2019	06/03/19 15/03/19 22/03/19 08/04/19 15/04/19	25.1.201/07/1554 In NE CORR 31/2 25.1.201/08/1576 In NE CORR 32/2 25.1.201/09/2229 In NE CORR 33/2/19	N	M	1	1.2,3	91	0	0	16	123	0	123	N/A	5B	0	
230		Network Rail requirement for CAT 3 cabling	16/02/2019	10/02/19 20/02/19 09/03/19 16/03/19 23/03/19 30/03/19	25.1.201/07/1555 In NE CORR 34/2 25.1.201/08/1576 In NE CORR 35/2 25.1.201/09/2229 In NE CORR 36/2/19	N	D	1	3.4	0	0	0	0	0	0	N/A	AI	0		
231		Design and work approval for masonry works for Sheelburn Road at Junction Prices Street to Gogar Street Down Street	26/01/2019	14/02/19 22/02/19 14/03/19 18/03/19 09/04/19 16/04/19 23/04/19	25.1.201/08/1583 In NE CORR 37/2 25.1.201/09/2229 In NE CORR 38/2/19 25.1.201/10/1521 In NE CORR 39/2/19 25.1.201/11/1521 In NE CORR 40/2/19	Y	I	1	3	109,842	0	0	19,107	147,906	130,257	27,651	N/A	1D	0	
232		Protection of the works at Russell Road Bridge during construction	03/02/2019	14/02/19 22/02/19 14/03/19 18/03/19 09/04/19 16/04/19 23/04/19	25.1.201/08/1584 In NE CORR 41/2 25.1.201/09/2229 In NE CORR 42/2/19 25.1.201/10/1521 In NE CORR 43/2/19 25.1.201/11/1521 In NE CORR 44/2/19	N	M	1	3.4	0	0	0	0	0	0	N/A	2	0		
233	29	renewal layout of frame	05/02/2019	07/02/19 12/02/19 20/02/19 09/03/19 16/03/19 23/03/19	25.1.201/08/1585 In NE CORR 45/2 25.1.201/09/2229 In NE CORR 46/2/19 25.1.201/10/1521 In NE CORR 47/2/19 25.1.201/11/1521 In NE CORR 48/2/19	Y	I	1	3.4	1,039,367	0	0	0	1,039,367	313,221	756,146	N/A	AI	0	
234	49	Reinforce Span for Extra Wire for Small Sign at Junctions	13/02/2019	23/02/19 01/03/19 08/03/19 15/03/19 22/03/19 29/03/19	25.1.201/07/1570 In NE CORR 49/2 25.1.201/08/1585 In NE CORR 50/2 25.1.201/09/2229 In NE CORR 51/2/19 25.1.201/10/1521 In NE CORR 52/2/19	Y	M	1	3	836,773	661	0	146,260	1,043,694	0	1,043,694	DPS	AI	0	
235		Utility Layout - reinforced ground cover	13/02/2019	12/02/19 17/02/19 24/02/19 03/03/19 10/03/19	25.1.201/08/1586 In NE CORR 53/2 25.1.201/09/2229 In NE CORR 54/2/19 25.1.201/10/1521 In NE CORR 55/2/19	TBA	M	1	12,3	6	0	0	0	6	0	N/A	1C	0		
236		Discovery of underground structure on Leith Walk	18/02/2019	04/03/19 12/03/19 19/03/19 26/03/19 02/04/19	25.1.201/08/1587 In NE CORR 56/2 25.1.201/09/2229 In NE CORR 57/2/19 25.1.201/10/1521 In NE CORR 58/2/19	Y	M	1	3.4	0	0	0	0	0	0	N/A	1C	0		
237	76A	Confirmed SOI assessment of Highmarket Depot	16/02/2019	07/02/19 20/02/19 27/02/19 06/03/19 13/03/19	25.1.201/08/1588 In NE CORR 59/2 25.1.201/09/2229 In NE CORR 60/2/19 25.1.201/10/1521 In NE CORR 61/2/19	TBA	M	1	3.4	4,076	40,761	0	7,133	64,967	54,907	N/A	2	54,967		

ETN INFRACO NOTIFICATION of the CHANGE (INTC)																		Location							
CONFIDENTIAL																									
Ref	Ref. ID	Use Change Order TCO	Description	Date Notified	Date of further letters	Letter Ref	Agreed in Principle?	Estimate Issued? (Y/N/On Hold)	Type	Change Type	Pricing Method	Value Estimate (GBP)								Allocation of Cost		Section	Change Order Value (BSC)		
												See Notes	See Notes	£ Submitted (Series 1 CAF)										£ Agreed	£ Not Agreed
												CAF	Subtotal	OH & P	Consentment Premiums	Other Premiums	Total								
208			Additional excavation at Carrick Knows South Abutment	2302/2009	2904/09 0609/09 1425/09 0206/09	25.1.201/AC/1833 25.1.201/AC/2476 25.1.201/AC/1425/T/C 25.1.201/AR/1254 25.1.201/AC/1538/M/P	N	Y	M	1	3.4	0	29	0	0	29	3	2	5	39	0	39	N/A	58	0
209			Edinburgh Park Bridge (S2) - South Abutment Base Formwork	2302/2009	1303/09 1903/09 0204/09 0905/09 21/09/09	25.1.201/AC/1028 25.1.201/AC/2008 25.1.201/AC/1160 25.1.201/CA/0340 E-mail to BSC	Y (Part)		M	1	3.4	0	14,465	0	0	14,465	0	1,070	2,530	18,064	7,527	10,538	N/A	58	0
210	30		Sugar Landfill Scottish Water Utility Diversion	1202/2009	1602/09 3004/09 0806/09 2305/09 0508/09 27/09/09	25.1.201/AC/724 25.1.201/AL/1556 25.1.201/AL/2496 25.1.201/AC/1427/AS 25.1.201/AR/0908 SDS-ULE90130-07-LET-00400 25.1.201/AR/0365	Y		I	1	3.4	16,204	3,022	0	19,206	1,801	1,429	529	23,195	0	23,195	N/A	7	0	
211			IFC Drawing Changes - Section 14 - Drainage	2602/2009			TBA	0	M	1	1.2,3	0	0	0	0	0	0	0	0	0	0	0	N/A	1A	0
212			IFC Drawing Changes - Section 7 Track Landscaping	1604/2009	0805/09 13/09/09	25.1.201/AC/2039 25.1.201/AR/1360/C/B 25.1.201/MR/0216	TBA	0	M	1	1.2,3	0	0	0	0	0	0	0	0	0	0	0	N/A	7	0
214			IFC Drawing Changes - Section 7 Track Vertical and Horizontal Alignment Drawings	1604/2009	1607/09 30/07/09	25.1.201/AC/2310 25.1.201/AR/1703/DS 25.1.201/AC/4169	TBA		M	1	1.2,3	0	276,696	0	0	276,696	incl	20,476	48,422	345,593	0	345,593	N/A	7	0
216			IFC Drawing Changes - Track Drainage - Gogalburn to Airport	2402/2009	1205/09 27/07/09	25.1.201/AR/0202 25.1.201/AR/04011/0284	TBA		M	1	1.2,3	0	1,680,327	0	0	1,680,327	incl	79,880	169,162	1,929,370	0	1,929,370	N/A	7	0
216			Section 10 IFC Drawing Changes - Roads, Site Clearance, Pavements, Kerbs, Footways and Paved Areas, Footpaths, Road Markings, Traffic Signs, Junctions and Crossings, Traffic Signal Ducting, Drainage, Horizontal and Vertical Alignment and Lighting	2002/2009	0306/09 16/07/09 17/07/09	25.1.201/AC/7699 25.1.201/AC/2780 25.1.201/AC/1774/T/C 25.1.201/AR/0078	0		M	1	1.2,3	0	0	0	0	0	0	0	0	0	0	0	N/A	10	0
217			Earthworks Quantity variances between IFC Trackwork Drawings and IFC M3 Data	1604/2009		25.1.201/AC/2311	TBA	0	M	1	1.2	0	0	0	0	0	0	0	0	0	0	0	N/A	7	0
218			IFC Drawing Changes - Drainage Relations - Train	2602/2009		25.1.201/AC/2005	N/A	N/A	M	1	1.2,3	0	0	0	0	0	0	0	0	0	0	0	N/A	7	0
219			Shandwick Place TR0 Storage	1902/2009	0405/09 07/05/09 09/05/09 13/09/09 19/09/09 21/09/09	25.1.201/GR/1677 25.1.201/AC/1390/DS 25.1.201/AC/2571 25.1.201/AC/1381/DS SDS-ULE90130-SW-LET-01669 25.1.201/AR/0363 25.1.201/AC/2033	TBA		D	1	1	7,143	0	0	7,143	714	529	0	8,386	0	8,386	N/A	10	0	
220			NOT ISSUE								0														
221	39		Revised alignment to Picardy Place, York Place and London Road Junctions	2002/2009	1802/09 16/04/09 17/04/09 20/03/09 05/04/09 30/04/09 19/07/09 30/07/09 31/07/09	25.1.201/AC/757 25.1.201/AL/5891 25.1.201/AC/1003 25.1.201/MR/0317 25.1.201/AC/1269/P/D 25.1.201/AC/1073 25.1.201/AC/1184 25.1.201/AC/1365/T/G SDS-ULE90130-SW-LET-01608 SDS-ULE90130-SW-LET-01643 25.1.201/AC/0190	Y		M	1	3.4	254,081	0	0	254,081	25,408	16,802	0	286,291	0	286,291	DPS	5	1C	0
222			Carrick Knows Underpass Obstructions	2302/2009	0904/09 12/06/09	25.1.201/AC/7103 25.1.201/AC/1091/W/B 25.1.201/CF/2779	N		M	1	3.4	0	2,035	0	0	2,035	203	161	356	2,745	0	2,745	N/A	5B	0
223			All Underpass Phase 1 Pile Top Levels	2302/2009	23/03/09 14/04/09 21/05/09 17/05/09 05/07/09 21/07/09	25.1.201/AC/7103 25.1.201/AC/1091/W/B 25.1.201/CF/2779 25.1.201/AC/7107 25.1.201/AC/1944 25.1.201/AC/1280/AS 25.1.201/CF/2690 25.1.201/AC/1893/M/G 25.1.201/CF/2892 25.1.201/AC/1899/M/G	N		M	1	3.4	0	27,477	0	0	27,477	0	2,033	4,600	34,310	0	34,310	N/A	5C	0
224	51		All Underpass Phase 1 Piling Obstructions	2302/09	18/02/09 25/03/09 09/04/09 09/04/09 14/04/09 01/05/09 17/07/09	25.1.201/AC/752 25.1.201/AC/1193 25.1.201/AC/1051 25.1.201/CH/802/4 25.1.201/AC/2291 25.1.201/AC/1236/AS 25.1.201/AC/2251 25.1.201/AC/1369/C/B 25.1.201/BC/W/0062	Y		M	1	3.4	0	3,420	0	0	3,420	342	253	599	4,614	4,015	599	N/A	5C	4,015
225			Advertisement Consents	2402/2009	27/03/09 05/03/09 02/04/09 09/04/09 04/05/09 06/06/09 17/06/09 21/07/09 22/07/09	25.1.201/GR/1716 25.1.201/AC/797 25.1.201/AC/1800 25.1.201/AC/1170 25.1.201/AC/2223 25.1.201/AC/1379/DS SDS-ULE90130-SW-LET-01542 25.1.201/AC/0876 25.1.201/AC/1816/DS 25.1.201/MR/0308	N		D	1	1	229,943	0	0	229,943	22,894	16,942	0	269,778	0	269,778	N/A	A8	0	
226			Expose existing gully connectors at Chisnagle 272-320 RHS	2402/2009	09/04/09 05/05/09 09/05/09 01/06/09 12/06/09	25.1.201/AC/1713 25.1.201/AC/1302/C/B 25.1.201/AC/1051/1 25.1.201/AC/0637 25.1.201/AC/1583/C/B 25.1.201/AC/1051/2/849	N		M	1	4	0	2,746	0	0	2,746	275	203	481	3,705	0	3,705	VPS	1B	0
227	41		Eye test and camera survey at Chisnagle 170 RHS	2402/2009	04/03/09 27/03/09 09/04/09 09/04/09 29/04/09 05/05/09 12/05/09	25.1.201/AC/1714 25.1.201/DM/CP/11753 25.1.201/AC/1120 25.1.201/AC/2228 25.1.201/AC/1203/C/B 25.1.201/AC/1349/M/P 25.1.201/AC/1051/1 25.1.201/AC/2629	Y		M	1	3.4	0	545	0	0	545	65	40	95	736	619	115	VPS	1B	619
229	42		Reinstate disabled footway following MUOPA works	2402/2009	04/03/09 06/03/09 18/03/09 27/03/09 09/04/09 29/04/09 09/05/09 12/05/09	25.1.201/AC/7116 25.1.201/AC/1051/1754 25.1.201/AC/877 25.1.201/MR/0341 25.1.201/AC/1120 25.1.201/AC/2228 25.1.201/AC/1349/M/P 25.1.201/AC/1430/AS 25.1.201/AC/2696	Y		M	1	3.4	0	1,099	0	0	1,099	110	61	192	1,462	1,207	276	VPS	1B	1,207

CEC00624408_0181

RTN IMPACT NOTIFICATION OF THE CHANGE (INTC) CONFIDENTIAL



Table with columns: No, Ref, No, Description, Date Notified, Date of Further Review, Letter Ref, Agreed in Principle?, Change Type, Change Method, Value Estimate (GBP), Allocation of Cost, Location, Change Order Sections, etc.

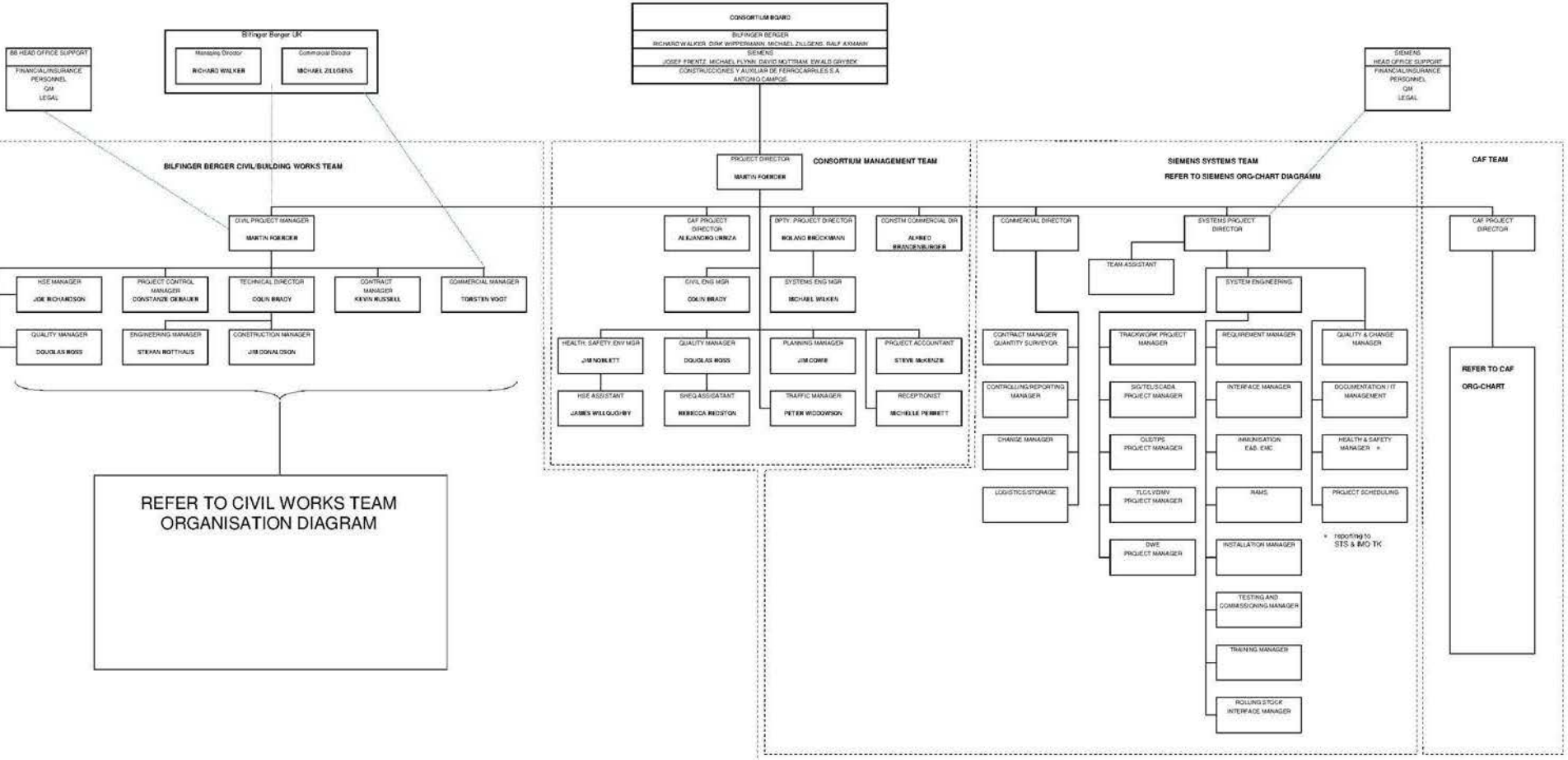


ETN INFRACO NOTIFICATION of the CHANGE (INTC) CONFIDENTIAL		Value Estimate (€000)										Allocation of Cost		Location		Change Order Value (BSC)													
Ref	Ref. No.	Use Change Order YCO	Description	Date Notified	Date of Further Issues	Letter Ref	Agreed in Principle?	Estimate Issued? Y=Yes, O=No	Change Type	Priority Method	Submitted (Series 4 CAF)							£ Agreed	£ Not Agreed	Form of VE	Number	See Notes	Change Order Value (BSC)						
											Bilfinger	Siemens	CAF	Subtotal	OH & P	Contingency	Other Preliims							Total					
223	45	74	Transfer of MUDFA Utility Diversion - Section 50 - Conflict Shear/AK50TE/ID05 - Virgin Media	05/04/2009	16/04/09 20/04/09 21/05/09 17/06/09 09/07/09	IN INF CORR 1206/00 25.1.201/AL2306 IN INF CORR 1395/AS 25.1.201/AL0032 IN INF CORR 1661/GM-G 25.1.201/AL0018	Y	1	1	1	3.4	0	3,961	0	0	0	3,961	0	293	693	4,948	3,269	1,679	VPS	2	5C	3,269		
224			IFC Drawing Changes - Soil Nailing and Reinforced Earth Treatment within Gogar Land fill area	24/04/2009		25.1.201/AL0291	TBA	0	M	1	3.4	0	0	0	0	0	0	0	0	0	0	0	0	0	0	N/A		7	0
224			Additional monitoring and testing to landfill area Revised OLE foundation and layout to Section	29/04/2009	06/05/09 09/05/09 17/04/09 11/06/09 12/06/09 13/05/09 22/05/09 27/05/09 23/05/09 01/06/09 02/06/09 08/05/09 08/06/09 19/06/09 23/05/09 26/05/09 17/07/09 23/07/09 27/07/09 28/07/09 30/07/09 10/08/09	25.1.201/HI1818 BBLABC#050741 IN INF CORR 1275/JM 25.1.201/HI0436 SDS-ULE90130-SW-LET-01552 25.1.201/KB/2595 IN INF CORR 1446/RB IN INF CORR 1490/RB 25.1.201/AMH/2739 SDS-ULE90130-SW-LET-01570 25.1.201/HI/2765 25.1.201/KB/2780 25.1.201/HI/2802 25.1.201/HI/2813 25.1.201/KB/2892 25.1.201/HI/2953 IN INF CORR 1697/RB ETN/SPM/BB-PBLABC#053480 25.1.201/KB/3124 IN INF CORR 1627/RB 25.1.201/KB/3149 25.1.201/KB/3173 25.1.201/HI/2953	TBA	1	D	1	1.2.3	62,629	0	0	0	62,629	6,263	4,635	0	73,526	0	73,526	N/A		IA,1B,1C,1D		0		
226			Relesign of OLE poles foundations due to increased loading Line 2	26/04/09	17/04/09 27/04/09 01/05/09 12/05/09 13/05/09 22/05/09 27/05/09 28/05/09 28/05/09 01/05/09 02/05/09 08/05/09 08/05/09 19/06/09 26/05/09 26/05/09 17/07/09 23/07/09 27/07/09 28/07/09 30/07/09 10/08/09	IN INF CORR 1275/JM 25.1.201/HI/0432 25.1.201/HI/0437 SDS-ULE90130-SW-LET-01534 25.1.201/KB/2595 IN INF CORR 1446/RB IN INF CORR 1490/RB 25.1.201/AMH/2739 SDS-ULE90130-SW-01570 25.1.201/SRO/2753 25.1.201/HI/2765 25.1.201/KB/2780 25.1.201/HI/2804 25.1.201/HI/2812 25.1.201/KB/2892 25.1.201/HI/2954 IN INF CORR 1697/RB ETN/SPM/BB-PBLABC#053480 25.1.201/KB/3124 IN INF CORR 1627/RB 25.1.201/KB/3149 25.1.201/KB/3173 25.1.201/HI/2954	TBA	1	D	1	1.2.3	73,018	0	0	0	73,018	7,302	5,483	0	85,723	0	85,723	N/A		All		0		
227			Amend OLE system design documents	26/04/09	17/04/09 27/04/09 01/05/09 12/05/09 13/05/09 22/05/09 27/05/09 28/05/09 28/05/09 01/05/09 02/05/09 08/05/09 08/05/09 19/06/09 26/05/09 26/05/09 17/07/09 23/07/09 27/07/09 28/07/09 30/07/09 10/08/09	IN INF CORR 1275/JM 25.1.201/HI/2404 25.1.201/HI/2438 SDS-ULE90130-SW-LET-01534 25.1.201/KB/2595 IN INF CORR 1446/RB IN INF CORR 1490/RB 25.1.201/AMH/2739 SDS-ULE90130-SW-01570 25.1.201/HI/2765 25.1.201/KB/2780 25.1.201/KB/2892 IN INF CORR 1697/RB ETN/SPM/BB-PBLABC#053480 25.1.201/KB/3124 IN INF CORR 1627/RB 25.1.201/KB/3149 25.1.201/KB/3173	TBA	1	D	1	1.2.3	6,511	0	0	0	6,511	651	482	0	7,644	0	7,644	N/A		All		0		
228			Amend 600 wide OLE building along loads and layout drawings	26/04/09	17/04/09 27/04/09 01/05/09 12/05/09 13/05/09 22/05/09 27/05/09 28/05/09 28/05/09 01/05/09 02/05/09 08/05/09 08/05/09 19/06/09 26/05/09 26/05/09 17/07/09 23/07/09 27/07/09 28/07/09 30/07/09 10/08/09	IN INF CORR 1275/JM 25.1.201/HI/2405 25.1.201/HI/2444 SDS-ULE90130-SW-LET-01534 25.1.201/KB/2595 IN INF CORR 1446/RB IN INF CORR 1490/RB 25.1.201/AMH/2739 SDS-ULE90130-SW-01570 25.1.201/HI/2765 25.1.201/KB/2780 25.1.201/HI/2802 25.1.201/HI/2814 25.1.201/KB/2892 25.1.201/HI/2955 IN INF CORR 1697/RB ETN/SPM/BB-PBLABC#053480 25.1.201/KB/3124 IN INF CORR 1627/RB 25.1.201/KB/3149 25.1.201/KB/3173 25.1.201/HI/2955	TBA	1	D	1	1.2.3	6,260	0	0	0	6,260	626	463	0	7,349	0	7,349	N/A		All		0		

CEC00624408_0184

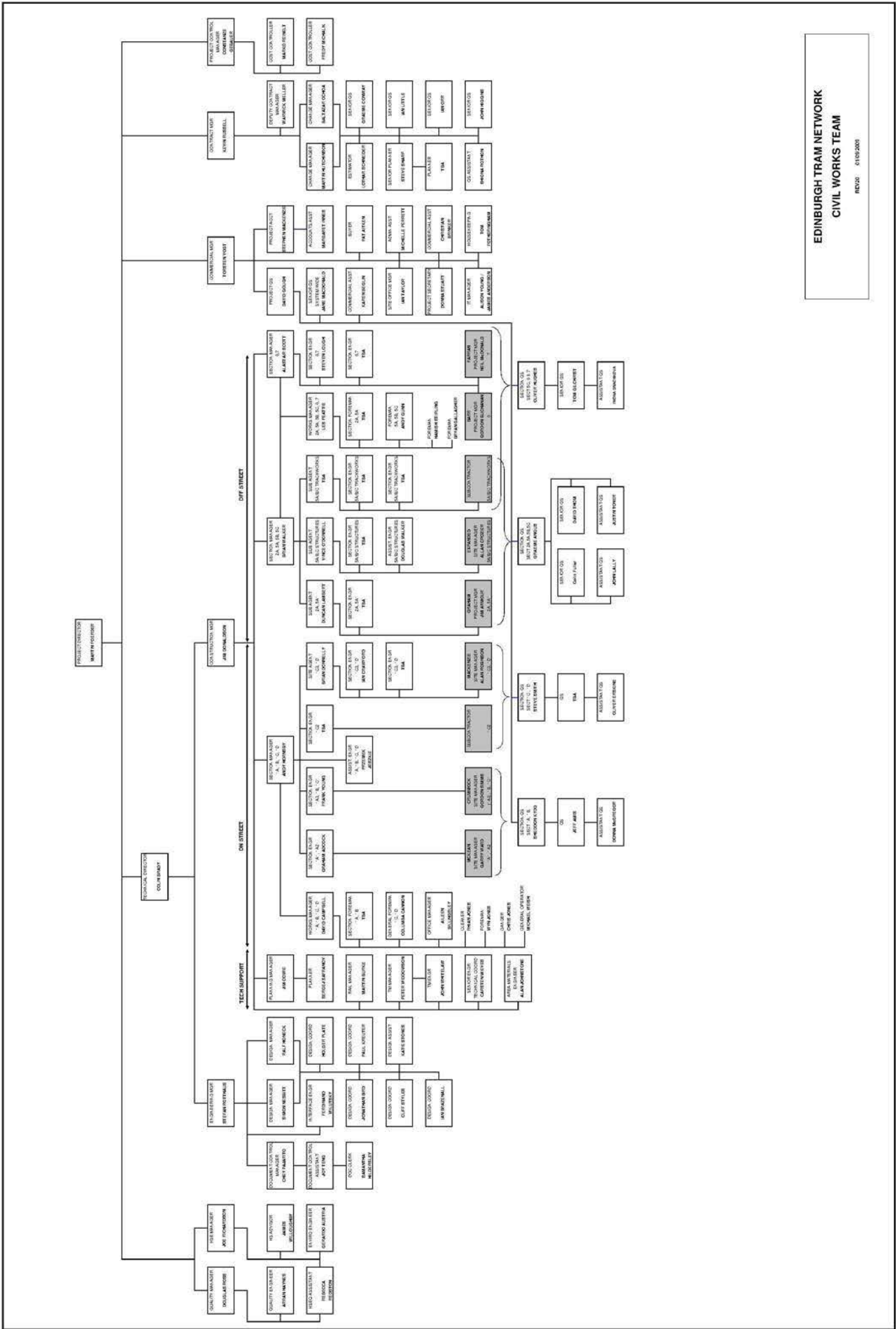
Chg. No.	Ref. No.	Is Change Order (Y/N)	Description	Date Notified	Date of Further Review	Letter Ref.	Approved in Principle?	Change Type		Change Method	Value Estimate (GBP)						Allocation of Cost	Change Order Sections (MBS)					
								Major	Minor		Subtotal	Other P.	Contingency	Other P.	Contingency	Other P.			Contingency	Other P.			
602			Addition of starter and rapping system in Section 6B	26/04/2009	04/05/09 18/05/09 03/07/09 08/07/09 27/07/09 27/07/09	ETN INFRACO 15/01/09 ETN INFRACO 15/01/09 ETN INFRACO 17/05/09 ETN INFRACO 15/01/09 ETN INFRACO 15/01/09 ETN INFRACO 15/01/09	TBA	M	1	1.2	0	2,176,497	0	161,000	480,215	2,745,702	0	2,745,702	N/A	5B	0		
603			Addition of starter and rapping system in Section 6C	26/04/2009	27/05/09 27/05/09 27/05/09 24/07/09 27/07/09 27/07/09 27/07/09 13/08/09 11/08/09 21/08/09 25/08/09	ETN INFRACO 14/05/09 ETN INFRACO 14/05/09 ETN INFRACO 17/11/09 ETN INFRACO 18/07/09 ETN INFRACO 18/07/09 ETN INFRACO 18/07/09 ETN INFRACO 18/07/09 ETN INFRACO 20/07/09 ETN INFRACO 20/07/09 ETN INFRACO 20/07/09 ETN INFRACO 20/07/09	TBA	M	1	1.2	0	704,336	661	621,231	123,259	879,716	0	879,716	N/A	5C	0		
604			Section 6B - Drainage Ditch	07/05/2009	05/05/09 05/05/09	ETN INFRACO 15/09/09 ETN INFRACO 15/09/09	N	M	1	1.2	0	-4,603	0	-330	-781	-5,574	0	-5,574	N/A	5B	0		
605			Additional Retaining Wall at Over Bridge Pumping Station	11/05/2009	20/05/09	ETN INFRACO 11/05/09	TBA	M	1	1.2	0	5,410	0	400	947	6,757	0	6,757	N/A	1A	0		
606			Geog Nerve Earthworks - Western Boundary Drainage	11/05/2009	11/05/09	ETN INFRACO 11/05/09	TBA	M	1	1.2	0	0	0	0	0	0	0	0	N/A	6	0		
607			Hard material within Geog excavation	12/05/2009	09/05/09 20/05/09	ETN INFRACO 17/05/09 ETN INFRACO 17/05/09	Y	M	1	1.2,3	0	30,148	0	3,015	2,231	46,870	0	40,870	N/A	6	0		
608			EC Changes - Concrete Specification	12/05/2009	18/05/09	ETN INFRACO 16/05/09	TBA	M	1	3.4	0	0	0	0	0	0	0	0	N/A	AI	0		
609		70	Earth Piles - New construction at Access Drive	12/05/2009	27/05/09 11/06/09	ETN INFRACO 15/01/09 ETN INFRACO 15/01/09	Y	M	1	1.2,3	2,760	0	2,760	-278	206	2,684	2,818	446	N/A	1A	2,818		
610			REVISION FOR ALUMINUM COUPLER			ETN INFRACO 15/01/09	?				0	0	0	0	0	0	0	0					
611			EC Drawing Changes - Truckform	16/06/2009	16/06/09 16/06/09 07/07/09 07/07/09	ETN INFRACO 16/06/09 ETN INFRACO 16/06/09 ETN INFRACO 17/06/09 ETN INFRACO 17/06/09	TBA	M	1	3.4	0	0	0	0	0	0	0	0	0	N/A	AI	0	
612		40	Upper Floor - R6 for a minimal loggia turbine	14/05/2009	09/05/09 21/05/09 24/05/09 19/05/09 04/07/09 05/08/09 11/08/09 11/08/09	ETN INFRACO 14/05/09 ETN INFRACO 14/05/09 ETN INFRACO 14/05/09 ETN INFRACO 14/05/09 ETN INFRACO 14/05/09 ETN INFRACO 14/05/09 ETN INFRACO 14/05/09 ETN INFRACO 14/05/09	Y	D	1	3.4	7,593	0	7,593	759	942	9,914	0	9,914	N/A	7	0		
613		84	Provide local protection of lower at Change 711990	26/05/2009	13/05/09 13/05/09	ETN INFRACO 15/05/09 ETN INFRACO 15/05/09	Y	D	1	1.2,3	1,999	0	1,999	200	149	2,897	2,697	0	VPS	2	7	0	
614			Simple site lighting to ambience between Russell Road and Water of Luth	16/06/2009	18/06/09 07/07/09	ETN INFRACO 16/06/09 ETN INFRACO 16/06/09	TBA	M	1	1.2,3	0	54,298	0	54,298	5,424	4,014	9,482	73,187	0	73,187	5A	0	
615		82	Provisional Sump	10/06/2009	05/06/09	ETN INFRACO 10/06/09	TBA	M	1	1.2,3	0	0	0	0	0	0	0	0	0	0	8	0	
616		90	Construction of a new Manhole Ref. 1220000001	02/06/2009	03/06/09 12/06/09	ETN INFRACO 15/06/09 ETN INFRACO 15/06/09	Y	M	1	1.2,3	0	0	0	0	0	0	0	0	0	0	1C	0	
617		93	SHA Drilling - Water Protection (at outside Avenue)	02/06/2009	03/06/09	ETN INFRACO 15/06/09	Y	M	1	1.2,3	0	0	0	0	0	0	0	0	0	0	1C	0	
618		82	Revised road retaining wall. Carry out site investigation to establish ground conditions and design with retained built out and wall details.	22/06/2009	03/06/09 10/07/09	ETN INFRACO 15/06/09 ETN INFRACO 15/06/09	Y	M	1	1.2,3	0	0	0	0	0	0	0	0	0	0	1	7	0
619		82	Replace MASS barrier at St Andrews Square with vertical, welded built out and wall details.	16/06/2009	16/06/09 14/07/09	ETN INFRACO 16/06/09 ETN INFRACO 16/06/09	Y	M	1	1.2,3	0	16,893	0	16,893	1,897	1,258	2,970	22,897	0	22,897	1C	22,897	
620			Lithium VVA - Greater Storage	24/07/2009	14/07/09	ETN INFRACO 15/07/09	TBA	M	1	4	0	37,919	0	37,919	3,792	2,789	6,519	61,017	0	61,017	N/A	1B	0
621		81	Revised road retaining wall. Carry out site investigation to establish ground conditions and design with retained built out and wall details.	17/06/2009	29/06/09 16/07/09	ETN INFRACO 17/06/09 ETN INFRACO 17/06/09	Y	M	1	4	0	0	0	0	0	0	0	0	0	0	0	5B	550,000
622			Phase 1A/1B (Veget)	22/06/2009	30/06/09	ETN INFRACO 15/06/09	N	M	1	1.2,3	0	0	0	0	0	0	0	0	0	0	3	0	
623			Remove Sump Material from Sub Grade of Drifted Access Road as per CIV 64800007	20/06/2009	15/07/09	ETN INFRACO 15/07/09	Y	M	1	1.2,3	0	29,467	0	29,467	461	2,181	6,167	36,804	0	36,804	N/A	6	0
624			Revised P.C. RSL Drawing Section 7	30/06/2009	22/07/09	ETN INFRACO 15/07/09	TBA	M	1	1.2,3	0	0	0	0	0	0	0	0	0	0	7	0	
625			Revised Street (revised south LOD)	16/07/2009	09/07/09 05/08/09	ETN INFRACO 16/07/09 ETN INFRACO 16/07/09	TBA	M	1	1.2,3	0	0	0	0	0	0	0	0	0	0	N/A	1A	0

10.8 Organisation Charts



**EDINBURGH TRAM NETWORK
 INFRACORE ORGANISATION CHART**
 REV20 01/09/2009

CEC00624408_0190



EDINBURGH TRAM NETWORK
CIVIL WORKS TEAM
REF: 01092008

BSC Infraco Consortium Office
 9 Lochside Avenue
 Edinburgh
 EH12 9DJ

ETN – Edinburgh Tram Network

Working Chart
 Execution Phase
 SPM: Siemens Project Management
 ETN(SPM\$MG&ABB#050486
 Rev E 12.08.2009

Fenella Watson
 Team assistent
 SPM
 +44 [REDACTED]

Miguel Berrozpe
 Project Director
 SPM
 +44 [REDACTED]

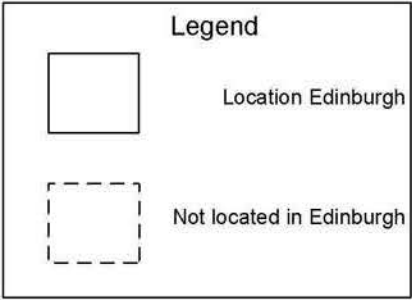
Alfred Brandenburger
 Commercial Director
 SPM
 +44 [REDACTED]

Ineke van Klaveren Quality Manager SQM	Kenny Hughes HSEQ Manager SRS	Mathias Hecht Scheduling / Requirement Management	Frank Wenzel Infrastruct., Docu- & Change Mgmt SDO/SCC	Axel Eickhorn Deputy Commercial Mgm/ Comm mngr DWE.	Thomas Schwanse Commercial Mgm. TRW	Henry Norton Contract Manager SCO +44 131 452 2867	Neil Hibbert Finance & Commercial Management	Susanne Fersch Logistic Officer SAD	Christiane Thureau Back office support SPM
--	-------------------------------------	--	--	---	---	---	---	---	--

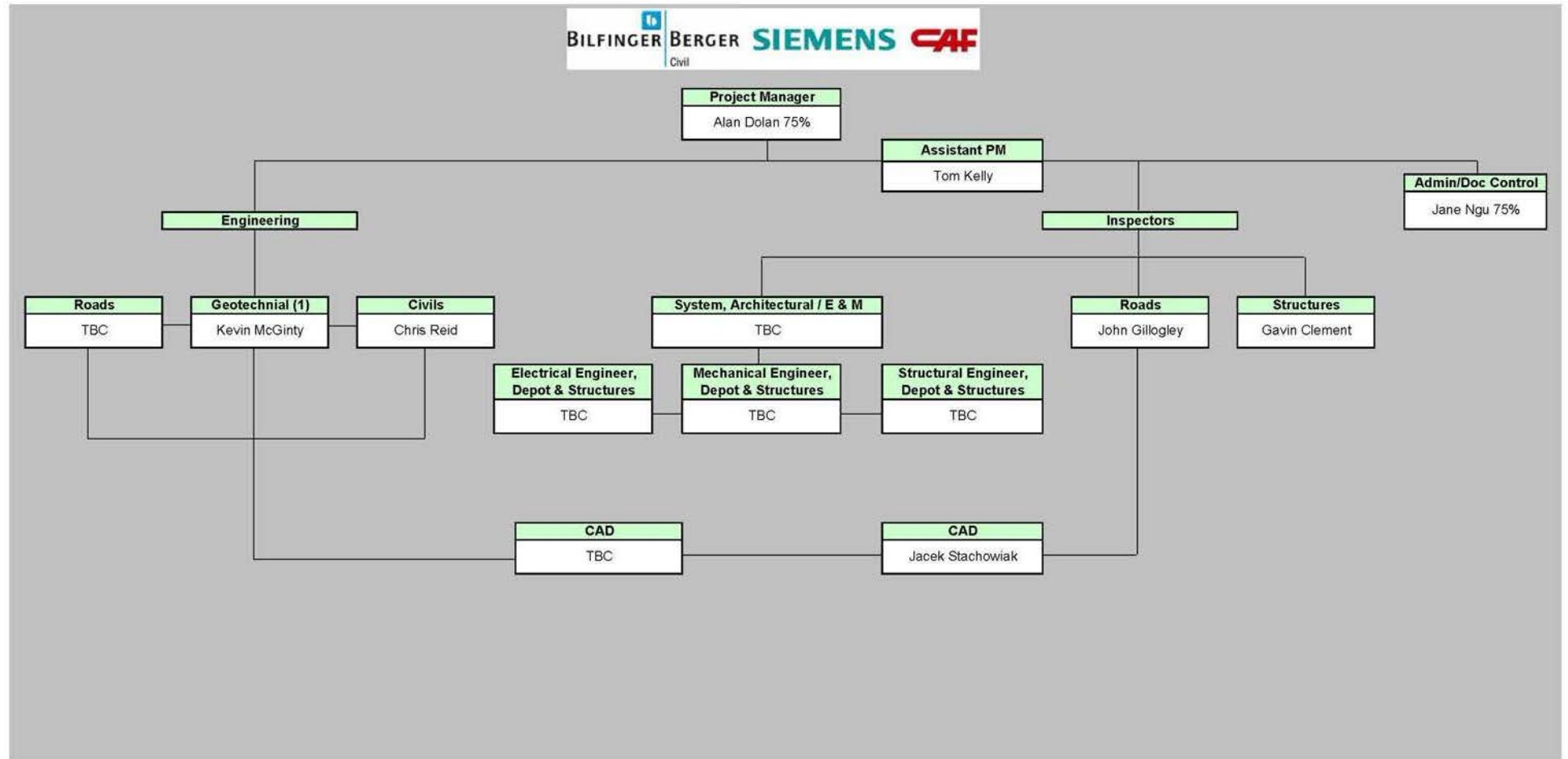
Michael Wilken Systems Engineer System coordination	Klaus Dieker Trackwork Manager TRW	Steffen Roehner SIG/TEL/SCADA Project Manager SIG	John Newton Project Director On-shore Coordination	Goeran Wendt Project Manager REL	Brian Sutherns TLC Manager TLC	Norbert Wunder DWE Project Manager DWE
---	--	---	--	--	--------------------------------------	--

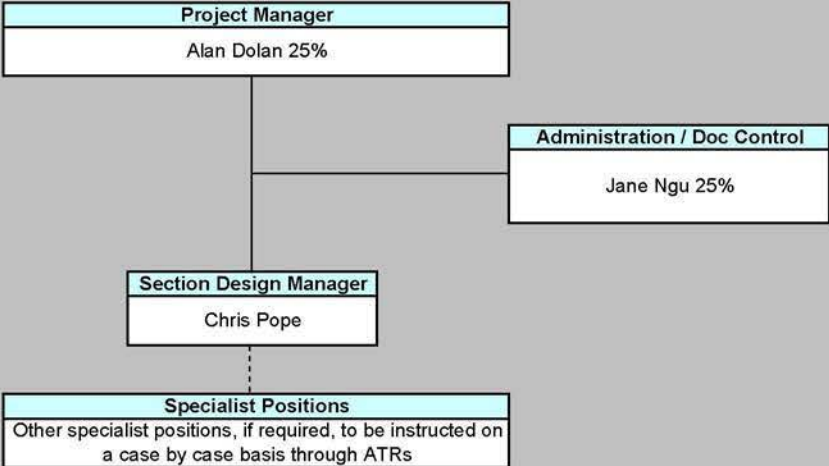
Robert Kraemer Technical Support HQ-Berlin	N.N. Testing and Commissioning Manager	Nigel Baskerville Engineering Manager RA	Tony Wright Engineering Manager COM/SCADA	Gary Bromley On-shore engineering Mngr REL +44 131 452 2867	Sven Abst Overhead Contact Line Manager OCL
--	---	--	---	--	---

Norbert Wunder Rolling Stock Interface Manager +49 30 386-52596	John Riley System Assurance / RAMS SRS	Wolfgang Braun Immunsation EMC/Earthing Bonding SE
---	--	--



Approved: Berrozpe
 Checked: (Brandenburger, Frentz)
 Prepared: (van Klaveren)
 File: ETN(SPM\$MG&ABB#050486_E.vsd
 Valid as of: 12.08.2009





10.9 Development Workshops

Misalignment Matrix

Version

03/09/2009

No.	Reference	Discipline	Item	Description / Scope of Work	Information from BBS to SDS	Description of Design Completion activities	BB / Siemens	SDS	Comments	Development Workshop	Date (scheduled)		Development Workshop Report and Instructions	
											BSC (SDS) Internal	confirmed date (to)	current version (issue date)	completed
1	Appendix 4	Civils	Power	Power distribution equipment foundation design				Yes	To be finalised in SDS/BBS alignment workshops	Substations	11/06/2009	05/08/2009		
2	Appendix 4	Civils	OLE	OLE support foundation design				Yes	To be finalised in SDS/BBS alignment workshops	OLE			11/03/2009	yes
3	Appendix 4	Civils	Bridges / Ret. Walls	Brief for any additional SI required				Yes	To be finalised in SDS/BBS alignment workshops	Not identified				
4	Appendix 4	OLE	OLE	Detailed design - catenary			Yes		To be finalised in SDS/BBS alignment workshops	OLE			11/03/2009	yes
5	Appendix 4	OLE	OLE	Detailed design - auto tensioned			Yes		To be finalised in SDS/BBS alignment workshops	OLE			11/03/2009	yes
6	Appendix 4	OLE	OLE	Building Fixing Report including design/approvals (excluding detailed wiring design and detailed building fixings locations)				Yes	To be finalised in SDS/BBS alignment workshops	OLE			11/03/2009	yes
7	Appendix 4	OLE	OLE	Pantograph interface and performance characteristics			Yes		To be finalised in SDS/BBS alignment workshops	OLE			11/03/2009	yes
8	Appendix 4	OLE	OLE	Typical cross sections and detailed cross sections			Yes		To be finalised in SDS/BBS alignment workshops	OLE			11/03/2009	yes
9	Appendix 4	OLE	OLE	Proposal for joles, wiring arrangements and the tensioning equipment			Yes		To be finalised in SDS/BBS alignment workshops	OLE			11/03/2009	yes
10	Appendix 4	OLE	OLE	Technical and performance specification for the OLE			Yes		To be finalised in SDS/BBS alignment workshops	OLE			11/03/2009	yes
11	Appendix 4	OLE	OLE	Proposal for equipment type and method of supporting the equipment along the route, including the wall fixings			Yes		To be finalised in SDS/BBS alignment workshops	OLE			11/03/2009	yes
12	Appendix 4	OLE	OLE	Detailed wiring layout design			Yes		To be finalised in SDS/BBS alignment workshops	OLE			11/03/2009	yes
13	Appendix 4	OLE	OLE	Detailed survey work including building location, height and condition, ground condition and pole location surveys				Yes	To be finalised in SDS/BBS alignment workshops	OLE			11/03/2009	yes
14	Appendix 4	OLE	OLE	Depot OLE Design			Yes		To be finalised in SDS/BBS alignment workshops	OLE			11/03/2009	yes
15	Appendix 4	OLE	OLE	Specify forces & moments for masts			Yes		To be finalised in SDS/BBS alignment workshops	OLE			11/03/2009	yes
16	Appendix 4	OLE	OLE	Mast foundations				Yes	To be finalised in SDS/BBS alignment workshops	OLE			11/03/2009	yes
17	Appendix 4	Power	Power Supplies	Substation external and Distribution design and approvals				Yes	To be finalised in SDS/BBS alignment workshops	Substations	11/06/2009	05/08/2009		
18	Appendix 4	Power	Power Supplies	Substation internal and Distribution design and approvals			Yes		To be finalised in SDS/BBS alignment workshops	Substations	11/06/2009	05/08/2009		
19	Appendix 4	Power	Power Supplies	Specify ducting requirements & mast to receive power supply			Yes		To be finalised in SDS/BBS alignment workshops	Radio Mast	31/03/2009	TBC		
20	Appendix 4	Power	Power Supplies	Design ducting from substation to specific mast				Yes	To be finalised in SDS/BBS alignment workshops	Substations	11/06/2009	05/08/2009		
21	Appendix 4	Power	Power Supplies	Substation Civil/Building design				Yes	To be finalised in SDS/BBS alignment workshops	Substations	11/06/2009	05/08/2009		
22	Appendix 4	Power	Earthing and Bonding	Outline schematic cabling routing, earthing and bonding arrangements				Yes	To be finalised in SDS/BBS alignment workshops	Earthing + Bonding	10/06/2009	11/08/2009		
23	Appendix 4	Power	Earthing and Bonding	Draft system earthing policy				Yes	To be finalised in SDS/BBS alignment workshops	Earthing + Bonding	10/06/2009	11/08/2009		
24	Appendix 4	Power	Earthing and Bonding	Typical detail sketches of earthing and bonding solutions as required				Yes	To be finalised in SDS/BBS alignment workshops	Earthing + Bonding	10/06/2009	11/08/2009		
25	Appendix 4	Power	Earthing and Bonding	Detail designs of earthing & bonding solutions as required			Yes		To be finalised in SDS/BBS alignment workshops	Earthing + Bonding	10/06/2009	11/08/2009		
26	Appendix 4	Power	Earthing and Bonding	Selection of specific earthing & bonding components				Yes	To be finalised in SDS/BBS alignment workshops	Earthing + Bonding	10/06/2009	11/08/2009		
27	Appendix 4	Power	Power Supplies	Determine traction power distribution equipment and principal component locations			Yes		To be finalised in SDS/BBS alignment workshops	TPS	TBC			
28	Appendix 4	Power	Power Supplies	Specification of traction power equipment and draft typical principal component location			Yes		To be finalised in SDS/BBS alignment workshops	TPS	TBC			
29	Appendix 4	Power	Power Supplies	Relevant schematics and diagrams showing trackside traction equipment				Yes	To be finalised in SDS/BBS alignment workshops	OLE			11/03/2009	yes
30	Appendix 4	Power	Power Supplies	Review overhead infeedable make-up proposed			Yes		To be finalised in SDS/BBS alignment workshops	OLE			11/03/2009	yes
31	Appendix 4	Power	Power Supplies	Define overhead infeedable electrical make-up conductor and cable sections and cable materials			Yes		To be finalised in SDS/BBS alignment workshops	OLE			11/03/2009	yes
32	Appendix 4	Power	Power Supplies	Review traction supply substation positions proposed			Yes		To be finalised in SDS/BBS alignment workshops	Substations	11/06/2009	05/08/2009		
33	Appendix 4	Power	Power Supplies	Define traction supply substation positions and ratings			Yes		To be finalised in SDS/BBS alignment workshops	Substations	11/06/2009	05/08/2009		
34	Appendix 4	Power	Power Supplies	Overhead infeedable make-up and traction supply substation positions input into Traction Power Study			Yes		To be finalised in SDS/BBS alignment workshops	TPS	TBC			
35	Appendix 4	Power	Power Supplies	Review results of traction power study. Revise make-up and traction supply substation positions and ratings as necessary			Yes		To be finalised in SDS/BBS alignment workshops	TPS	TBC			
36	Appendix 4	Power	Power Supplies	Track power feeding and sectioning diagrams for main lines and Depot			Yes		To be finalised in SDS/BBS alignment workshops	OLE			11/03/2009	yes
37	Appendix 4	Power	Power Supplies	Traction supply substation schematic drawings			Yes		To be finalised in SDS/BBS alignment workshops	Substations	11/06/2009	05/08/2009		
38	Appendix 4	Power	Power Supplies	Feed track bed electrical stray current control requirements to track discipline			Yes		To be finalised in SDS/BBS alignment workshops	Earthing + Bonding	10/06/2009	11/08/2009		
39	Appendix 4	Power	Power Supplies	Feed traction power distribution design information for the depot building and track system within the Depot complex, incorporating isolator interlocking with Depot plant and the terms within the general scope above, to the Overhead Line Equipment and Depot disciplines			Yes		To be finalised in SDS/BBS alignment workshops	TPS	22/06/2009			
40	Appendix 4	Power	Power Supplies	Work in conjunction with the Auxiliary Power discipline to specify the optimum method of supplying the Depot services: power supply requirements, and feed into the appropriate Specifications				Yes	To be finalised in SDS/BBS alignment workshops	TPS	22/06/2009			
41	Appendix 4	Power	Power Supplies	Traction power design report on overhead infeedable electrical make-up, traction supply substation positions, ratings, train loadings, protection settings, load/fault discrimination, pantograph voltages and rail touch voltages			Yes		To be finalised in SDS/BBS alignment workshops	TPS	TBC			
42	Appendix 4	Power	Power Supplies	Draft traction supply substation equipment specification for traction supply substation			Yes		To be finalised in SDS/BBS alignment workshops	Substations	11/06/2009	05/08/2009		
43	Appendix 4	Power	Power Supplies	Feed overhead infeedable electrical make-up, including parallel support cabling, feeder cabling and feeder and section isolators, to OLE discipline			Yes		To be finalised in SDS/BBS alignment workshops	OLE			11/03/2009	yes
44	Appendix 4	Power	Power Supplies	Feed traction power SCADA requirements to Systems and Communications discipline			Yes		To be finalised in SDS/BBS alignment workshops	TPS	TBC			
45	Appendix 4	Power	Power Supplies	Specify to Scottish Power the high and low voltage supply requirements as appropriate for traction, Depot services and substation building services			Yes		To be finalised in SDS/BBS alignment workshops	Substations	11/06/2009	05/08/2009		
46	Appendix 4	Power	Switch heating	Switch heating specification			Yes		To be finalised in SDS/BBS alignment workshops	Points Heating	TBC			
47	Appendix 4	Power	Permanent Way	Points heating			Yes		To be finalised in SDS/BBS alignment workshops	Points Heating	TBC			
48	Appendix 4	Power	Power Supplies	Power distribution equipment foundation design				Yes	To be finalised in SDS/BBS alignment workshops	Substations	11/06/2009	05/08/2009		
49	Appendix 4	Power	Power Supplies	Depot Substation and Distribution Design			Yes		To be finalised in SDS/BBS alignment workshops	TPS	22/06/2009			
50	Appendix 4	Supervisory, Control & Communications	Supervisory, Control & Communications	Define stop location			Yes		To be finalised in SDS/BBS alignment workshops	SCC			03/08/2009	
51	Appendix 4	Tram Stops	Passenger Info	Provision for Passenger Information System			Yes		To be finalised in SDS/BBS alignment workshops	Tramstops	09/06/2009	04/08/2009		
52	Appendix 4	Tram Stops	Passenger Info	Component selection Passenger Information System			Yes	Yes	BBS as part of procurement of the shelter and stop equipment	Tramstops	09/06/2009	04/08/2009		
53	Appendix 7, Part C	Accommodation Works		Design to be completed to IFC status, all design consents and approvals obtained and BBS will construct IFC Design	Complete Design				PS seeks clarification of this statement which is used on many occasions i.e. Which IFC Design has BBS allowed for to construct? Is this the SDS design or some variant which BBS is considering when referring to 'finalising design'	None known at present				
54	Appendix 7, Part C	Building (Depot)		Liaison on steelwork design for Depot Building may be required to allow BBS to comply with BAA requirements for notice period to lower crane jobs if BAA require use of the auxiliary runway. Any re-design is unlikely or minimal					BAA risks are assumed to remain with steelwork, where required, to allow BBS to comply with BAA requirements for notice period to lower crane jobs if BAA require the use of the auxiliary runway.					
55	Appendix 7, Part C	Drainage		Design to be completed to IFC status, all design consents and approvals obtained and BBS will construct IFC Design	Complete Design					Drainage	25/06/2009	25/08/2009		
56	Appendix 7, Part C	Drainage		Requirements for maximizing use of and connection to existing drainage network to be confirmed.	Review and complete design					Drainage	25/06/2009	25/08/2009		
57	Appendix 7, Part C	Earthworks		Design to be completed to IFC status, all design consents and approvals obtained and BBS will construct IFC Design	Complete Earthworks Design									

No.	Reference	Discipline	Item	Description / Scope of Work	Information from BBS to SDS	Description of Design Completion activities	BB / Siemens	SDS	Comments	Development Workshop	Date (scheduled)		Development Workshop Report and the Instructions	
											BSC (SDS) Internal	confirmed date (to)	current version issue date	completed
58	Appendix 7, Part C	Earthworks		Requirements for excavation and filling below Earthworks Outline to be designed and specified and assessment of anticipated formation conditions		Standard Details for the treatment of low CBR or Stiffness or Soft Material, excavate and replace with class 6 Lime Modification, Geotextiles			PB has carried out sufficient S/GI to inform the design. With reference to the Scope Split meetings a rolling programme of S/GI is to be carried out by BBS. PB will provide a suite of treatments which can be applied when the requirements are established by BBS. Note that this scope of work will be impacted by the lower void spanning capacity of BBS's Trackform offering in comparison with the PB reference design.	Trackform			11/03/2009	yes
59	Appendix 7, Part C	Earthworks				Extent, length, width and depth of areas requiring earthworks below Earthworks Outline			PB has carried out sufficient S/GI to inform the design. With reference to the Scope Split meetings a rolling programme of S/GI is to be carried out by BBS. PB will provide a suite of treatments which can be applied when the requirements are established by BBS. Note that this scope of work will be impacted by the lower void spanning capacity of BBS's Trackform offering in comparison with the PB reference design.	Trackform			11/03/2009	yes
60	Appendix 7, Part C	Earthworks		Formation requirements to be confirmed.		CBR or Stiffness Requirements at Formation for Highways and Track			PB has carried out sufficient S/GI to inform the design. With reference to the Scope Split meetings a rolling programme of S/GI is to be carried out by BBS. PB will provide a suite of treatments which can be applied when the requirements are established by BBS. Note that this scope of work will be impacted by the lower void spanning capacity of BBS's Trackform offering in comparison with the PB reference design.	Trackform			11/03/2009	yes
61	Appendix 7, Part C	Earthworks		Requirements for excavation and disposal of contaminated material and refilling of void, to be designed and specified.		Extent, length, width and depth of areas requiring earthworks below Earthworks Outline and materials to be used for refilling where required			It is assumed that BBS carries the risk associated with the discovery of contaminated land. It is also assumed that BBS carries the risk associated with Archaeological remains.	SDS design not changed				
62	Appendix 7, Part C	Earthworks		Special geotechnical measures, e.g. embankment slope steepening (by selection of fill type, re-enforced earth) cut slope steepening (by slope drains, buttresses, soil nails) soft ground treatment (by surcharging/consolidation, load transfer platforms) to be designed and specified.		Embankment slope steepening (by selection of fill type, re-enforced earth) cut slope steepening (by slope drains, buttresses, soil nails) soft ground treatment (by surcharging/consolidation, load transfer platforms) to be designed and specified.				SDS design not changed				
63	Appendix 7, Part C	Earthworks		Design special Geotechnical measures for Gogar Landfill Site. Solution to be developed.		Design solution to be developed with BBS Engineers for surcharge embankment with appropriate consolidation period and excavation and replacement in the vicinity of Gogarburn Bridge East Abutment				SDS design not changed				
64	Appendix 7, Part C	Geometry, Horizontal Alignment		Design to be completed to IFC status, all design consents and approvals obtained and BBS will construct IFC design		Complete Design				Vertical and Horizontal Alignment	25/08/2009	TBC		
65	Appendix 7, Part C	Geometry, Horizontal Alignment		Confirmation required that alignment is compatible with CAF Tram D/E and L/O.		incorporate CAF Tram D/E in Design			Change required to wording Confirmation required that CAF Tram is compatible with the alignment.	Vertical and Horizontal Alignment	25/08/2009	TBC		
66	Appendix 7, Part C	Landscaping		Design to be completed to IFC status, all design consents and approvals obtained and BBS will construct IFC design		Complete Design				None known at present				
67	Appendix 7, Part C	OLE Foundations		Design to be completed to IFC status, all design consents and approvals obtained and BBS will construct IFC Design	Information from BBS to be issued on OLE poles, including loadings.	Design OLE Foundations			PB is preparing a suite of standard OLE base designs which should cover the requirement.	OLE			11/03/2009	yes
68	Appendix 7, Part C	Roads		Design to be completed to IFC status, all design consents and approvals obtained and BBS will construct IFC Design		Complete Design				Roads			27/02/2008	yes
69	Appendix 7, Part C	Roads		Subject to survey, pavement design to be developed and finalised to minimise work scope		Pavement design is to be revised to a plane and re-surface (new regulating and surface course only) when survey information is available and where it confirms the feasibility of this design solution Note This activity is and alternative to the Vertical Alignment activity above.			PB cannot identify where this approach may apply. Clarification sought from BBS. Any surveys to be carried out and paid for by BBS.	Roads			27/02/2008	yes
70	Appendix 7, Part C	Roads		Further pavement surveys and assessments are required		GPR and/or Pavement Condition surveys as required by scope (above)			Clarification sought from BBS	Roads			27/02/2008	yes
71	Appendix 7, Part C	Site Clearance		Design to be completed to IFC status, all design consents and approvals obtained and BBS will construct IFC design		Complete Design				None known at present				
72	Appendix 7, Part C	Site Clearance		Design to be completed to IFC status, all design consents and approvals obtained.		Complete Design				None known at present				
73	Appendix 7, Part C	Sub-station Buildings		Design to be completed to IFC status, all design consents and approvals obtained and BBS will construct IFC Design	Information on Sub-station equipment to be supplied to SDS by BBS	Complete Design			For the purposes of the Infraco Procurement SDS has provided comprehensive procurement information, including detailed dimensioned drawings, schematics, wiring diagrams, protection diagrams etc. all of which are based upon the many useful technical deliverables and Scottish Power meetings. All substation equipment performance and functionality has been approved by SP as have the equipment layouts within the associated substations which themselves have progressed through planning. Completion of the Sub-station designs is to be a BBS responsibility.	Substations	11/08/2009	06/08/2009		
74	Appendix 7, Part C	Systems and Power Cable Ducts		Design to be completed to IFC status, all design consents and approvals obtained and BBS will construct IFC Design	Information on cabling requirements to be supplied to SDS by BBS	Design duct group and spacing to accommodate cabling requirements and incorporate information on drawings			Comprehensive SDS cable duct drawings and layouts have been produced based upon the approved SAS design and procurement documentation. The cabling requirements may change dependent upon the BBS proprietary solution. Identification of scope and incorporation on drawings to be BBS responsibility	System and Power-cable ducts	24/08/2009	TBC		
75	Appendix 7, Part C	Trackform		Design to be completed to IFC status, all design consents and approvals obtained and BBS will construct IFC Design					All Trackform design and development issues are to be the responsibility of BBS. PB provides the horizontal and vertical alignment design together with Civils infrastructure design within the Trackform envelope. All design within the envelope is assumed to be the responsibility of BBS. PB (SDS) will not engage in agreement and approval in relation to the BBS Trackform design.	Trackform			11/03/2009	yes

No.	Reference	Discipline	Item	Description / Scope of Work	Information from BBS to SDS	Description of Design Completion activities	BB / Siemens	SDS	Comments	Development Workshop	Date (scheduled)		Development Workshop Report and the Instructions	
											BSC (SDS) Internal	confirmed date (to)	current version issue date	completed
76	Appendix 7, Part C	Trackform		Cross sections required to reflect BBS's selected track system, including minimum track construction depths (top of rail to formation) with corresponding formation condition requirements	SDS believe that loadings are required to enable them to complete this Design activity.	Incorporate BBS selected Trackform on drawings and confirm minimum track construction depth and corresponding formation condition requirement as Pricing Assumption or at some other depth condition measure to be agreed/approved by SDS, BBS, te and CEC			All Trackform design and development issues are to be the responsibility of BBS. PB provides the horizontal and vertical alignment design together with Civilis infrastructure design outwith the Trackform envelope. All design within the envelope is assumed to be the responsibility of BBS. PB (SDS) will not engage in agreement and approval in relation to the BBS Trackform design.	Trackform			11/03/2009	yes
77	Appendix 7, Part C	Trackform		Cross sections required to reflect BBS's selected track system, including minimum track construction depths (top of rail to formation) with corresponding formation condition requirements		Incorporate BBS selected Trackform on drawings and confirm minimum track construction depth and corresponding formation condition requirement as Pricing Assumption or at some other depth condition measure to be agreed/approved by SDS, BBS, te and CEC			All Trackform design and development issues are to be the responsibility of BBS. PB provides the horizontal and vertical alignment design together with Civilis infrastructure design outwith the Trackform envelope. All design within the envelope is assumed to be the responsibility of BBS. PB (SDS) will not engage in agreement and approval in relation to the BBS Trackform design.	Trackform			11/03/2009	yes
78	Appendix 7, Part C	Tramstops		Design to be completed to IFC status, all design consents and approvals obtained and BBS will construct IFC Design		Complete Design				Tramstops	08/06/2009	04/08/2009		
79	Appendix 7, Part C	Vertical Alignment		Design to be completed to IFC status, all design consents and approvals obtained and BBS will construct IFC Design		Complete Design				Vertical and Horizontal Alignment	25/06/2009	TBC		
80	Appendix 7, Part C	Vertical Alignment		Revise alignment, where possible and where Programme permits for on street section to minimise Roads work-scope		Revise, generally raise, vertical alignment of Track			It is assumed that PB will complete the SDS Alignment Design as currently agreed and that any changes which are deemed to be possible will be instructed and paid for when they are identified and agreed.	Vertical and Horizontal Alignment	25/06/2009	TBC		
81	Appendix 7, Part C	Vertical Alignment		Revise alignment, where possible and where Programme permits to minimise Roads work-scope		Revise, generally raise, vertical alignment of Track			The SDS alignment is designated to accommodate the most economical vertical and horizontal passage of the tram throughout its journey. It should also be noted that any change in the track alignment may impact other aspects of the infrastructure e.g. tramstops.	Vertical and Horizontal Alignment	25/06/2009	TBC		
82	Appendix 7, Part C	Vertical Alignment		Revised alignment required to facilitate direct fixing of rails to structures and guideway		Revise, lower, vertical alignment of Track			Trackform issue - BBS responsibility	Vertical and Horizontal Alignment	25/06/2009	TBC		
83	Appendix 7, Part C	Vertical Alignment		Revised alignment required to facilitate direct fixing of rails to structures		Revise, lower, vertical alignment of Track			Trackform issue - BBS responsibility	Vertical and Horizontal Alignment	25/06/2009	TBC		
84	Appendix 7, Part C	W1 Lindsay Road		Design to be completed to IFC Status, all design consents and approvals obtained and BBS will construct IFC Design						None known at present				
85	Appendix 7, Part C	S16 Victoria Dock Entrance		Design to be completed to IFC Status, all design consents and approvals obtained and BBS will construct IFC Design						Trackform	TBC			
86	Appendix 7, Part C	S17 Tower Place		Design to be completed to IFC Status, all design consents and approvals obtained and BBS will construct IFC Design						Trackform	TBC			
87	Appendix 7, Part C	S18 Leith Walk Railway		Design to be completed to IFC Status, all design consents and approvals obtained and BBS will construct IFC Design						Trackform	TBC			

10.10 Issues and Concerns

Not Applicable