

**Edinburgh Tram Network
Progress Report No. 12**

Period 12 – August 2006



Parsons Brinckerhoff Limited
Edinburgh Tram Network
SDS Provider
City Point, 65 Haymarket Terrace
Edinburgh, EH12 5HD

Telephone: +44 (0) 131 623 8600
Facsimile: +44 (0) 131 623 8601
Email: edinburghtram@pbworld.com

1st September 2006
Doc Ref: ULE90130B-SW-REP-00265

CEC01359145_0001



Author: Sally Bristow
Reviewer: Jes Hansen
Approved by: David Hutchison
Date: 1st September 2006



Table of Contents

1.0 Progress Summary	4
Progress Summary	4
Outstanding Issues	4
Four Week Look Ahead and Critical Activities	6
Change in Scope	6
2.0 Capital Cost	9
3.0 Health and Safety	9
4.0 Quality Management	10
5.0 Engineering.....	11
5.1 Tram System Engineering	11
5.2 Site Investigations	12
5.3 Road and Traffic Management	13
6.0 Procurement	13
Appendix A - Programme	15

1.0 Progress Summary

Progress Summary

The overall design progress is estimated to 43%. Once SDS have approval for Preliminary Design and agreed a workable detailed design baseline, the planned overall progress figure can be ascertained.

Requirements Definition Phase

All Requirements Definition Deliverables have been confirmed by **tie**, accepted with comments. SDS is awaiting the Milestone Completion Certificate.

Preliminary Design Phase

The Preliminary Design Phase progress is 99% against the baseline of 19th April of 100%. There are still approvals outstanding & SDS is awaiting comments from **tie**.

Detailed Design Phase

The Detailed Design Phase progress is 5.71%.

Outstanding Issues

Programme

Programme slippage as a result of changes, late feedback and acceptance decisions on preliminary design and lack of client instructions.

RD Close-out

SDS has submitted all deliverables for the RD phase and they have been accepted by **tie**. SDS is awaiting the Milestone Completion Certificate and outstanding sums for this phase.

PD Close-out

Preliminary Design Submission response comments have taken 43 days to be returned from **tie**. Some comments are still not officially received on Review Response Document and do not indicate their contractual status. SDS Team have taken it upon themselves to formalise the return on SDS response sheets, such that **tie** may simply "tick-box" the sheets and formalise each comment.

SDS awaits the Formal Review Comments from the Design Review Panels held during this period. Again all comments received have been recorded, colour coded by SDS and sent to **tie** for their action.

SDS requires a clear statement of **tie**'s evaluation of the progress for the respective areas together with any other deliverables **tie** require in order completing the Preliminary Design. SDS has not yet received a clear statement of what items are missing nor have the Milestone Completion Certificates for the preliminary system wide design or sub sector design been received.

TEL Board Changes

No formal Change Order has been received by SDS and the time bar of 30 days outlined under Clause 15 of The Agreement has been barred. SDS is working at risk and is considering terminating the work until a formal Change Order is received.

Charette changes

To date no Change Orders (cost or determination) have been agreed and further design work in Section 1 is delayed until a **tie** decision / instruction is received. All "go/no go" optioneering have been carried out at risk to SDS. All SDS options have been proposed at each Friday Planning Summit throughout this period. SDS is working at risk and is considering terminating the work until a formal Change Order is received.

Utilities additional work

tie has requested a CapEx estimate for the utility diversions. SDS considers this to be outside the scope of services as it is clearly stated in the scope of services that the CapEx only relates to InfraCo. SDS has requested a formal Change Order from **tie**. SDS is not progressing the work until the formal Change Order has been received.

VE Additional work

tie has requested a detailed value engineering of the relocation of the depot to the Leith site. SDS considers this to fall outside the SDS scope and is awaiting a formal Change Order before progressing the work.

Procurement Support

SDS has provided procurement support which is outside the scope of the SDS Agreement to **tie** since 25th May 06. On numerous occasions, SDS has requested a resolution of the cost associated with this and has not to date received a formal Change Order.

Traffic Modelling Claim

PB presented a compliant tender submission including a full modelling suite / scope during the tender stages. **tie** removed the cost and scope from the compliant tender and replaced it with **tie's** preferred subconsultant; SDG, as a result of a cost saving exercise. This was accepted by PB on the basis that SDG would execute the full scope as priced in PB's tender submission.

It is now evident that SDG is not executing the TRANSYT/LINSIG Modelling work for local junction evaluation. SDG believes that it has made this clear to **tie** during the tender stages.

No interaction between PB and SDG took place during the tender stages. The scope reallocation and financials were entirely handled by **tie**.

PB is making every effort on behalf of **tie** to mitigate the impact on the programme by resourcing and mobilising resources to execute the (**tie**) omitted scope.

Evaluation of the scope of work has been undertaken by SDS and a programme has been produced to model and analyse the traffic movements through the junctions.

PB has forwarded a Cost Estimate to **tie** and is awaiting a formal Change Order for this work.

Close-out of Change Notice CNS001

No decision by **tie** (cost or determination) on Change Order 001. CNS001 has time barred the 30 days outlined under Clause 15 of The Agreement. Discussion on this change during the period has not produced any movement on the issue. SDS considers terminating work on these until a formal Change Order is received.

EARL Structures - tie Change Notices 10 & 11

SDS has submitted Cost Estimates for the additional Earl Structures. SDS is awaiting formal Change Orders before implementing the changes.

Earl Utilities – Change Notices 6 & 7

SDS has submitted Change Estimates for incorporating the Earl utility design along line 2. No Change Order has yet been received and SDS considers disregarding the work until a clear direction from **tie** is received.

PB Change Requests 5 & 6 - Baird Street and Depot Bridge

SDS has submitted Change Requests for the additional cost associated with Baird Drive High Level Option and the Depot Road Bridge. No formal Change Order has yet been received.

Resource to CEC

The arrangement with Tom Clarke working directly for the CEC needs to be resolved.

Formal Notification of tie's Contract Representative

No formal notification of **tie's** Contract Representative has been received to date. SDS requests a clear notification of its contract representative.

Procurement Strategy and Documentation required

SDS has requested The Infraco Procurement Strategy and the deliverables list at the last three procurement meetings. It is not clear to SDS what needs to be provided for the different procurements of contracts. In order to successfully provide tie with the documentation, SDS needs clear guidance and a deliverables list of what is required for each procurement including InfraCo, TramCo, and MUDFA together with a clear procurement programme.

NR Design Costs

SDS has carried out an asset-survey of the Network Rail Assets where the tram alignment runs adjacent to Network Rail. The changes to the Network rail infrastructure is outside the SDS scope.

Land compensation costs for access

The compensation costs to landowners for access to their land is considered to be outside the SDS Scope.

Four Week Look Ahead and Critical Activities

Please refer to Appendix A for a 4 week look ahead extracted from the P3e programme. The Submittal Programme and Approvals Matrix is currently being updated and will be uploaded to the tie Extranet on Monday 4th September.

Change in Scope

SDS has received 18 Change Notices to our agreement since elective date. The 'live' changes are summarised below:

Change Notice No. 1 – Re-phasing of the Edinburgh Tram Network

SDS has re-submitted an estimate to tie on the 15th May 06.

Change Notice No. 3 - Traffic Regulation Orders

SDS has formally responded to Change Notice CNS003 in letter issued 3rd April 2005, stating its position. The action is with tie to review and respond.

Change Notice No. 4 - Temporary Traffic Regulation Orders

SDS has formally responded to Change Notice CNS003 in letter issued 3rd April 2005, stating its position. The action is with tie to review and respond.

Change Notice No. 6 - Decrease in Utility Scope / Earl

SDS has formally provided an SDS Change Estimate to tie on the 5th May 06. SDS has not received the official Change Order yet. A decision is very critical in order to progress the Design.

Change Notice No. 7 - Increase in Utility Scope / Earl

SDS has formally provided an SDS Change Estimate to tie on the 5th May 06. SDS has not received the official Change Order yet. A decision is very critical in order to progress the Design.

Change Notice No. 10 – EARL – Tram Depot and Stabling Arrangements

SDS received CNS010 on 31st July and formally provided tie with an SDS Change Estimate on 18th August.

Change Notice No. 11 – EARL Bridge Structure

SDS received CNS011 on 31st July and formally provided tie with an SDS Change Estimate on 18th August.

Change Request 05 CRT – High Level Option at Baird Street

SDS has formally submitted a Change Request 06 on the 16th May 06. The Change Request has been rejected by tie. SDS disagrees with the rejection and will respond to tie as soon as practicable.

Change Request 06 CRT– New Bridge over Tramway at Depot

SDS has formally submitted a Change Request 06 on the 16th May 06. SDS has not yet received a formal response. The Change Request has been rejected by tie. SDS disagrees with the rejection and will respond to tie as soon as practicable.

Change Notices Issued and Approved by TEL

Change Notice No. 1 – Interchange Design and Cost/Benefit

SDS received CNB002 on Friday 16th June. SDS has formally submitted a Change Estimate to **tie** on 4th July 2006.

Change Notice No. 2 – CCTV Arrangement

SDS received CNB002 on Friday 16th June. SDS formally provided an SDS Change Estimate to **tie** on the 4th July 2006.

Change Notice No. 3 – PI Arrangement

SDS received CNB003 on Friday 16th June. SDS formally provided an SDS Change Estimate to **tie** on the 4th July 2006.

Change Notice No. 4 – Back-Office Systems

SDS received CNB004 on Friday 16th June. SDS formally provided an SDS Change Estimate to **tie** on the 4th July 2006.

Change Notice No. 5 – Inspector/Conductors – on board security

SDS received CNB005 on Friday 16th June. SDS formally provided an SDS Change Estimate to **tie** on the 4th July 2006.

Change Notice No. 6 – Common Ticketing

SDS received CNB006 on Friday 16th June. SDS formally provided an SDS Change Estimate to **tie** on the 4th July 2006.

Change Notice No. 7 – Stop Locations

SDS received CNB007 on Friday 16th June. SDS formally provided an SDS Change Estimate to **tie** on the 4th July 2006.

Change Notice No. 8 – Princes Street and Leith Walk Tramway Alignment

SDS received CNB008 on Friday 16th June. SDS formally provided an SDS Change Estimate to **tie** on the 4th July 2006.

Change Notice No. 9 – Branding

SDS received CNS009 on 23rd June and formally provided **tie** with an SDS Change Estimate on 9th June 2006.

Change Notice No. 10 – St Andrews Square Alignment

SDS received CNB0010 on Friday 16th June. SDS formally provided an SDS Change Estimate to **tie** on the 4th July 2006.

Change Notices arising from the Charatte Workshop

Change Notice No. 10a – St Andrews Square Alignment

SDS received CNB010A on Wednesday 19th July. SDS formally provided an SDS Change Estimate to **tie** on the 1st August 2006.

Change Notice No. 11 – Shandwick Place Stop Location

SDS received CNB011 on Wednesday 19th July. SDS formally provided an SDS Change Estimate to **tie** on the 1st August 2006.

Change Notice No. 12 – Princess Street and Leith Walk Tramway Alignment

SDS received CNB012 on Wednesday 19th July. SDS formally provided an SDS Change Estimate to **tie** on the 1st August 2006.

Change Notice No. 13 – Picardy Place Tram Road Realignment

SDS received CNB013 on Wednesday 19th July. SDS formally provided an SDS Change Estimate to **tie** on the 1st August 2006.

Change Notice No. 14 – Leith Walk Alignment Confirmation



SDS received CNB014 on Wednesday 19th July. SDS formally provided an SDS Change Estimate to **tie** on the 1st August 2006.

Change Notice No. 15 – Foot of Leith Walk Stop Location

SDS received CNB015 on Wednesday 19th July. SDS formally provided an SDS Change Estimate to **tie** on the 1st August 2006.

2.0 Capital Cost

General

Requirements Definition Phase

This Phase is now complete.

Preliminary Design Phase

Draft Pricing Schedule and CapEx Estimate for the Infraco portion of the works was delivered to the client for review and comment on the 22nd August 2006.

Current Activities:

At present work has commenced on an independent review and sense check of both the Pricing Schedule and the CapEx. Revised CapEx will be issued on the 6th September 2006 with the final version of the Pricing Schedule being issued on the 14th September 2006.

Achieved milestones for the period:

No milestones applicable for this period.

Planned work for next period:

Revised CapEx will be issued on the 6th September 2006 with the final version of the Pricing Schedule being issued on the 14th September 2006.

Capex/Cost Estimate Movement between Requirements Definition and Detailed Design Phase:

Table 1 below details the main changes in from Requirements Definition Phase to Preliminary Design Phase.

REF	WBS CODE	DESCRIPTION	FEASIBILITY UPDATE JUN '05	COST MODEL/COST CHECK FEB '06	Prelim Design Aug '06 (SDS Est Rev 8)	REQUIREMENTS DEFINITION APR '06 (SDS Est Rev 5)	PERIOD MOVEMENT	COMMENTS
B1		Track and Formation	£ 57,705.00	£ 64,330.00	£ 54,212.00	£ 56,998.00	£ 2,786.00	Reduction due primarily due to better understanding of the actual trackform types to be adopted. Therefore more certainty of cost
B2		Tram Stops	£ 8,980.00	£ 8,960.00	£ 3,493.00	£ 3,365.00	£ 108.00	Originally priced based on exemplar stop drawings. Actual arrangements now known
B3		Depot	£ 15,698.00	£ 17,040.00	£ 15,629.00	£ 14,372.00	£ 1,257.00	excavation costs of depot site being moved from Structures into this section
B4		Highways	£ 24,791.00	£ 59,130.00	£ 12,345.00	£ 24,509.00	£ 12,164.00	Reduction due to prelim design giving more detail of works involved. Risk item should however be raised as volume quantities are based on assumptions not cross-sections. No cross-sections available at time of preparation of this estimate
B5		Buildings			£ 1,279.00	£ 1,928.00	£ 649.00	Result of 1 Substation being deleted
B6		Structures	£ 23,110.00		£ 20,229.00	£ 37,439.00	£ 17,210.00	Risk item should be raised as the designs of most of the structures are not fully developed
C1		Supervisory and Comms + Onboard Comms	£ 7,455.00		£ 7,905.00	£ 7,207.00	£ 698.00	currently being carried out and the actual final figure is likely to be some £5m plus. A risk item should be raised in respect of this item
C2		Comms						
C3		Tram Stop and Park & Ride Equipment						
C4		Depot Equipment						
		E & P	£ 19,328.00	£ 49,330.00	£ 19,153.00	£ 19,894.00	£ 741.00	Result of 1 Substation being deleted
		Prelims & Contractors Desi	£ 47,931.00		£ 25,412.00	£ 29,832.00	£ 4,420.00	Reduction is a function of the reduced capital works above
		Traffic Management			£ 1,200.00	£ 1,225.00	£ 25.00	This item is being checked. Reduction is due to function of reduced cost of the highways works
		Trainin / S/aires			£ 350.00	£ 350.00	£ -	
		Network Rail		£ 5,800.00				
		Network Effect	£ 1,000.00	£ 1,000.00				
		Efficiency Savin	£ 10,000.00	£ 10,000.00				
		Errors in SDS Sheet						
			£ 195,988.00	£ 195,480.00	£ 161,207.00	£ 197,139.00	£ 35,932.00	

3.0 Health and Safety

General

CDM Health and Safety activities are being developed as appropriate.



There are ongoing reviews of Method Statements and Risk Assessments for non-intrusive and intrusive surveys.

There is progressive delivery of tie's and SDS's Edinburgh Tram Induction packages to all members of the SDS team.

Input of Safety Hazards/Risks to the Project Risk Register and the revision of Safety Management Plan for Preliminary Design Phase are also occurring.

Comments have been received from tie regarding the SDS Safety Management Plan. These comments are currently being addressed.

Site investigations works have commenced, these works will intensify over the coming months, as such there will be a continuous monitoring of site activities to ensure adherence to site safety plans and method statements.

Discussions have been ongoing with Network Rail regarding the safety implications of the various options being proposed for the Balgreen road access.

Achieved Milestones in the Period:

- The revised Health and Safety Plan was accepted by tie with comments
- A number of Method Statements have been submitted to tie (e.g. ground Investigation works) for acceptance and risk Assessments continue to issued to tie for information prior to site work commencing for survey of Network Rail assets submitted to tie for review.
- A CDM presentation was delivered to SDS by the Planning Supervisor, assisted by SDS Quality & Safety team. This was followed by a robust question answer session,

Planned Milestones for Next Period:

- Finalise method statements for bridgeworks along the Roseburn corridor.
- Monitor through site health and safety inspections the onsite activities of the GI contractors to ensure adherence to the approved construction health and safety plan and method statements.
- Continue discussions with Network Rail regarding the safety implications for tram and heavy rail for the Balgreen road options.

4.0 Quality Management

General

Comments regarding the Preliminary Design Quality Management Plan have been received from tie, these comments are being addressed. Quality documentation has been submitted by SDS Sub contractors engaged in the Ground Investigations works.

There have been no quality issues raised by tie.

Achieved Milestones in the Period:

- All subcontractors' quality documentation reviewed and commented on.
- Taking on board tie comments from Preliminary Design submissions, a more robust Drawing Control Procedure and a supplementary CADD manual has been developed. This document will be issued for internal approval.

Planned Milestones for Next Period:

- There will be continued review of QA processes and preparation for internal audits and monitoring by tie.
- Continue with internal audits/monitoring. Audit the various disciplines for evidence of formal and informal design reviews.
- Undertake joint quality and technical audit of the IDC process
- Continue quality meetings with tie.
- Accompany tie on any planned process monitoring.



- Monitor the onsite activities of the GI contractors to ensure adherence to their quality systems and procedures. An emphasis will be placed upon the inspection of the calibration certification for instruments and equipment to ensure their validity when being used on site.
- Develop a process for capturing lessons learned to date to facilitate continuous improvement through the Detailed Design stage.

5.0 Engineering

5.1 Tram System Engineering

Section 1

- Coordinated and completed IDC for Line Section 1
- Participated in Planning Summits each Friday with **tie** / TEL / CEC
- Updated and verified Limits of Deviation transfer from OS Grid (as provided to SDS) into Localized grid.
- Developed junction summary plan to support Preliminary Design submittal.
- Reviewed and submitted Section 1B and 1C Temporary Traffic Management Plans.
- Reviewed and authorized distribution of various utility drawings to stakeholders.
- Developed required design for Charette options in preparation for Planning Summit meetings, including St. Andrew Square and Picardy Place.
- Develop "advantages" and "disadvantages" for each charette option.
- Developed a "rough" traffic model for 2 options in Haymarket junction coming out of the charette summary.
- Presented Lighting Strategy and Charette Change Updates to Tram Design Working Group Meeting 30th August.
- Presented Section 1A to Design Approval Panel on 22nd August. Note that Sections 1B thru 1D were not addressed due to the proposed charettes in these areas.
- Met with CEC 30-Aug to develop initial Traffic Management Strategy for St. Andrew Square. Progressing draft white paper to summarize and progress.
- Initiate coordination with CEC Designer for St. Andrew Square Capital Streets Project to coordinate / integrate details from the tram project to the CEC project to be let at the beginning of October.
- Attended meeting with **tie** (P. Douglas) at Forth Ports re: Ocean Terminal on 22nd August.
- Attended meeting with **tie** (A. Harper) for Historic Scotland and World Heritage re: St. Andrew Square charette on 24th August.
- Participated in Roads Design Working Group on 24th August and 31st August.
- Met with TSS on 29th August to discuss re-working of Roads Design Working Group.

Section 2

- Coordinated and 95% completed IDC for Section 2, 5 & 7.
- Updated and verified Limits of Deviation transfer from OS Grid (as provided to SDS) into Localized grid.
- Presented Section 2, 5 & 7 to Design Approval Panel on 22nd August. Substations, Stops and Structures were addressed at panels the week before.
- Seven design features were given 'Red' status at Approval Panels. 2 Stops, 3 Structures, 1 Substation, Ingliston P&R as a whole due to future proofing for Newbridge Branch. Awaiting formal comments/direction from **tie**.
- Two structures have been added to the design program and will require a PD - Murrayfield Stop retaining wall and Gyle Stop retaining wall.
- Ongoing liaison with Network Rail, Structures workshop (no.2) was held on 10th August. Letter regarding Murrayfield Underpass will be sent to **tie** today.
- Meeting with NWR, **tie** and Transdev held on 24th August to assess alignment/bridge options at Balgreen Rd. Option 3 to be progressed with another meeting to be scheduled for mid September. Baird Drive residents to be consulted on 13th September.
- BAA/EARL interface meeting was held early August - highlighted requirement for **tie** to instruct SDS of the way forward regarding: Utilities survey and design, Tram alignment at Eastfield Ave and replacement of Burnside Road on BAA land. Next meeting is on 7th September.



- KS and tie met with BAA and NATS (National Air Traffic Control Service) who confirmed that their Utility paths do not affect Tram, BAA 'owned' Utilities only will require diversion.
- Meeting (no.2) with SDS & Tony Gee & Partners on 17th August confirmed SDS/TGP coordination required to enable a HV cable to be buried underneath the 'at grade' crossing' in the ScotRail depot - ongoing coordination.
- SDS & NEL meeting on the 8th August confirmed that proposed development levels and PD tram vertical alignment are approx 2m different. Coordination and direction from tie required - ongoing coordination.
- Archeological Surveys and some GI have been postponed due to Land Access issues.
- Letter issued to Scottish Natural Heritage by SDS on 15th August regarding Badger and Otter fencing, sett and tunnel requirements. Awaiting response to enable completion of Mitigation Strategy.

Section 3

- One further iteration of OLE design completed (3A). Now matches latest iteration of Track design
- One further iteration of 3A drainage design completed. Additional outfalls and additional pumping station required. Other options are currently being assessed
- Scottish Water, at this time refusing to allow tram project run-off into pipe network. Second pumping station now required (Queensferry Road & possibly Telford Road)
- Possible additional access identified at Telford Road - CEC Parks team to advise following Roseburn Corridor Access site meeting
- OLE sighting/pole location study ongoing (3A)
- RFI ULE90103-03-RFI-00002 Submitted (Crewe Toll land)
- DAP completed all disciplines (10 reds - 3 bridges, 3 roads/track/ole, 1 roads, 1 roads/track, 2 sub-stations)
- Development of Roseburn cross-sections (demarcation/pole locations) to inform HMRI submission
- presented Roseburn retaining walls to TDWG
- LOD's updated. Finalised LOD at bottlenecks TBC following completion of additional topo survey
- IDC's 95% complete

Depot

- IDC completed
- Presentation Section 6 to Design Approval Panel
- Work to Access Road off Gogar round-about commenced
- Work to Retaining wall along A8 boundary commenced
- Review of Depot Layout undertaken to facilitate 43m tram length (Alstrom proposal) Report input to Procurement Team
- Review and amendments to internal accommodation to reflect Tram Tenderers comments to enable the Procurement Team to complete their Tender Documentation
- Meeting with Utilities to determine site entry locations
- Review and amendment of access to Meadowfield Farm and Airport Emergency Route from proposed turning head to keep work within LOD.
- Review of tie / CEC PD Comments commenced

5.2 Site Investigations

General

Roseburn Corridor Structures Assessment: Method Statements for CAN and CTS approved by SDS and issued to tie for approval. Plan to start works (subject to contractor availability) 6 weeks from issue of Method Statements to tie.

Topographic: Phase 2 (validation of BKS aerial survey and correction of CETM survey) is now complete. Phase 3 (additional topographical survey requirements) has been prepared and the contractor selected after a 3-week delay due to a request for a further (fourth) price for undertaking the works.

Network Rail T2 Asset Survey: The inspection went ahead as scheduled, however, it was not possible to complete the inspection as the second span was sealed (steel grill on one entrance and plywood on the other). Network Rail is to be approached to determine whether they are planning an inspection and how the area should be accessed safely.

Archaeological: Metal detection was due to start 14 August but it was cancelled due to access issues. New proposed date will be after the harvest is collected in late September.

Geotechnical: The ground investigation started on 23 August.

Drainage Survey: A site visit to Roseburn Corridor was undertaken on 25 July 2006 to establish what existing drainage is present throughout the corridor. We do not propose to undertake any further drainage survey.

Achieved Milestones in the Period:

- Topographical: Phase 2 works, correction of CETM survey and submission of BKS aerial survey Verification Report.
- Structural: Rail-level (topographical) surveys at Carricknowe and Edinburgh Park are programmed for mid-August.
- Drainage survey of Roseburn Corridor.
- Environmental Invasive Species survey completed.

Work Planned for Next Period

- Topographical: Phase 3 works filling the gaps in the topographical survey.
- Archaeological: Field work for the metal detection survey is programmed to start late September after the harvest. Archaeological trenching.
- Geotechnical: Boreholes and trial pits.

5.3 Road and Traffic Management

General

While we have received unofficial comments on the Preliminary Design from **tie** and CEC Roads and we have participated in the Preliminary Design Approval Panels (DAPs), we have yet to receive any official comments on our Preliminary Design. We expected those comments by 28 July. Our detailed design cannot commence until we receive official sign-off from **tie**.

We undertook charette feasibility assessments and sketched proposals for Picardy Place and St Andrew Square. We presented the findings to **tie** and CEC, but we have not received agreement to proceed with further work on the charette options.

We completed a walk over study of the existing bus stop network, and CEC have provided an asset list of the bus stop network. We have prepared a list of possible solutions for the Bus Stop Working Party to review.

The production of Temporary Traffic Management Plans is ongoing for the on-street sections. We have submitted plans for Sections 1B, 1C and 1D to **tie** for review.

Achieved Milestones in the Period:

- Presented charette proposals for Picardy Place and St Andrew Square to **tie** and CEC.
- Completion of preliminary design IDC process
- Temporary Traffic Management Plans issued for sections 1B, 1C and 1D

Planned Milestones for Next Period:

- We cannot plan design work until we receive approval on our preliminary design from **tie**.
- Participation at the Roads Design Working Group
- Issue Temporary Traffic Management Plans for sections 2A, 3B and 5C

6.0 Procurement



General

The SDS provider procurement team continue to support the **tie** team leading Tramco and Infraco procurement however the workload has reduced as the project circumstances change.

Infraco ITN now early October 2006.

Kim Dorrington has taken the role of PB Detail Design Manager.

Tony Goodyear continues to support the Tram Procurement process by answering questions and providing clarification to the tram Procurement Manager following the issue of the Tram ITN on 7th July 2006.

Bruce Ennion's role continues full time supporting the tie Procurement team covering commercial and technical aspects of the Infraco ITN although a formal response to the requested submission of a proposal for the provision of resource to support the non-technical aspects of the procurement documentation is still awaited.

After further consideration by **tie** the family of documents produced by the SDS Procurement team and entitled Employers Requirements are not to be re-branded by **tie** as '**tie** Requirements'. These are to remain Employers Requirements and the legal documentation revised to suite.

Achieved Milestones in the Period:

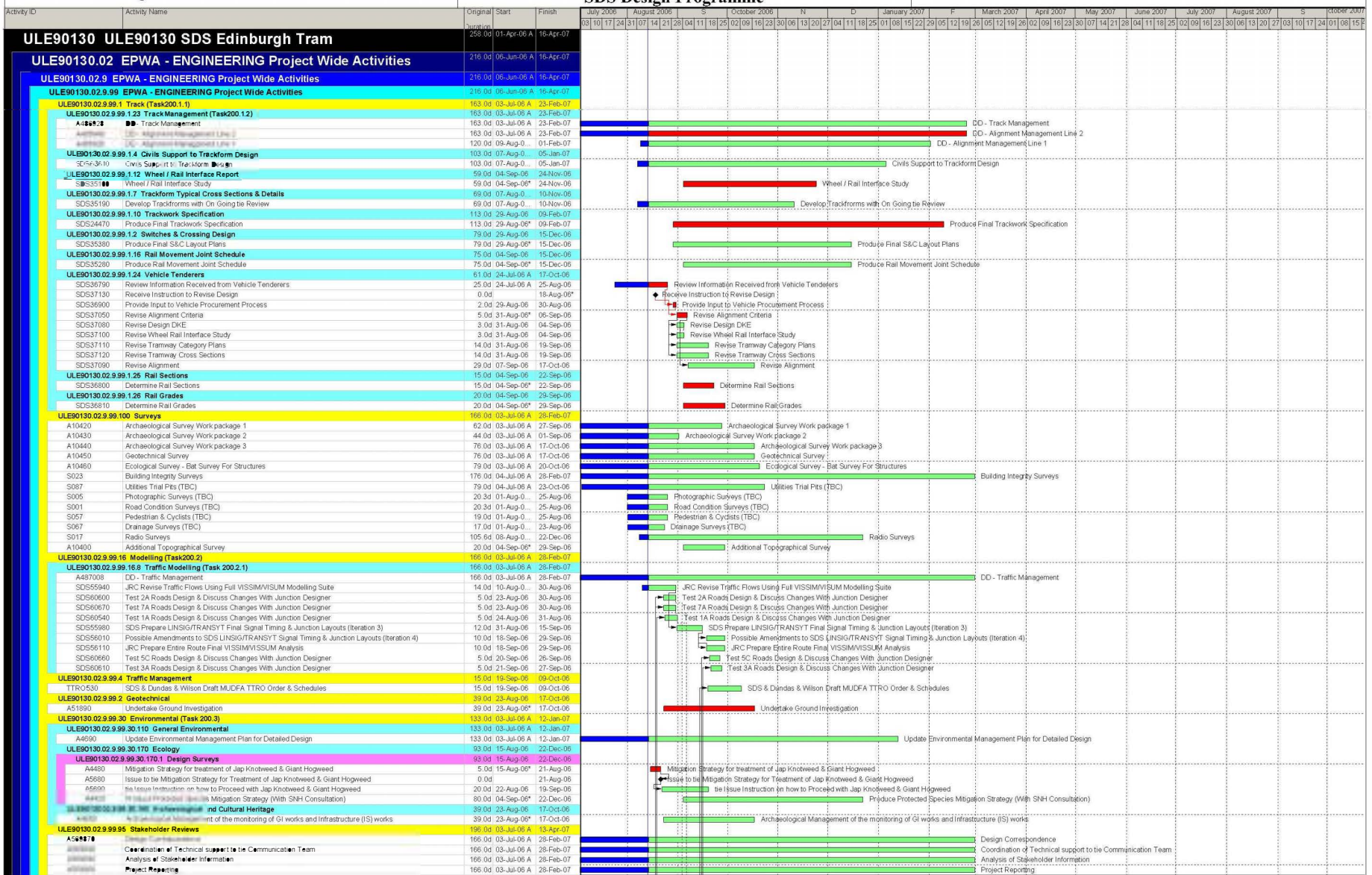
- A second review of the **tie**/DLA draft Infraco Scope of Works Schedule has been completed and issued internally for discussion within **tie**/DLA.
- The development and production of an Employers Requirements – General Specification, covering administrative, procedural and general aspects of the Infraco obligations continues.

Planned Milestones for Next Period:

None

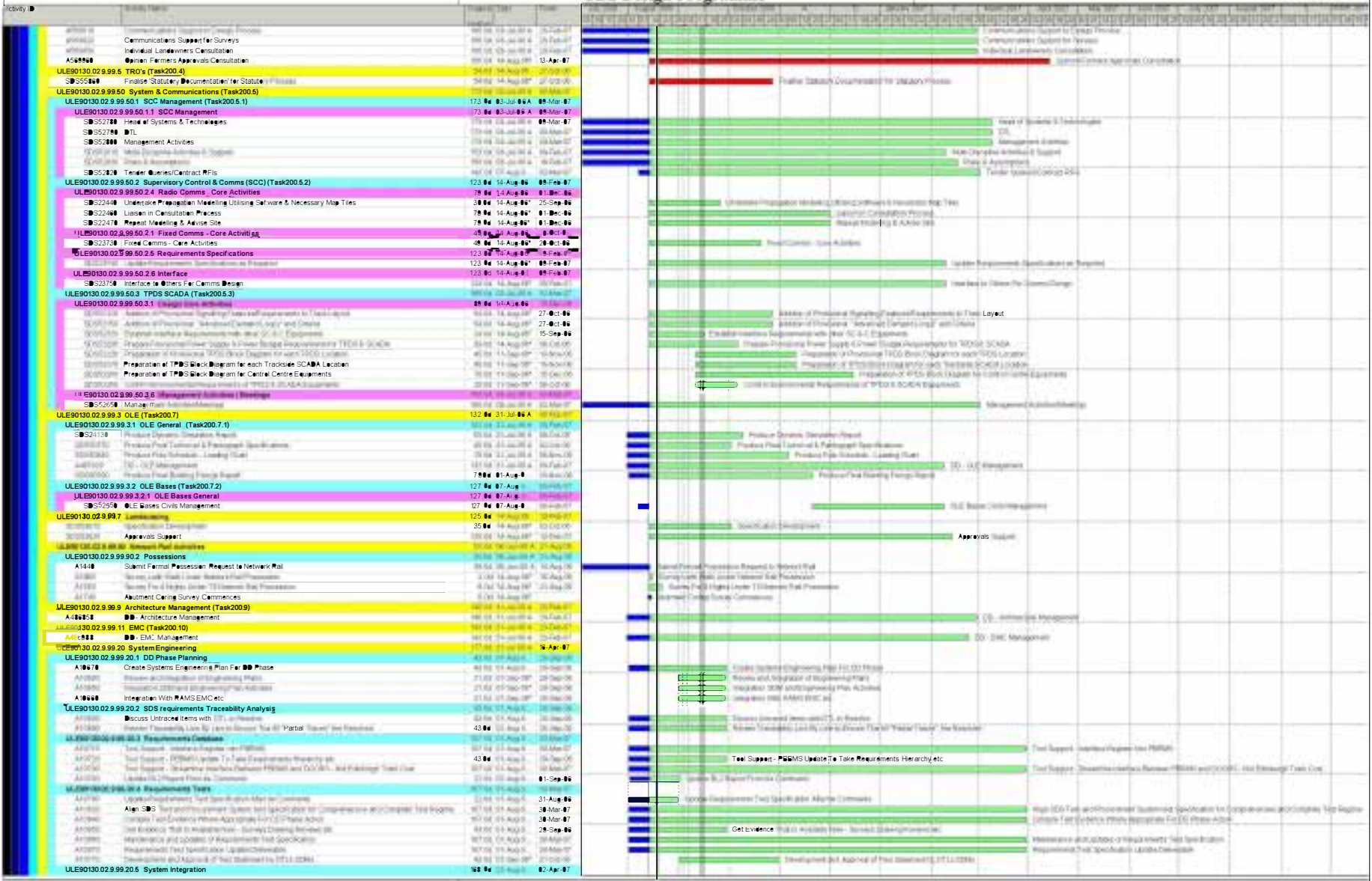


Appendix A - Programme



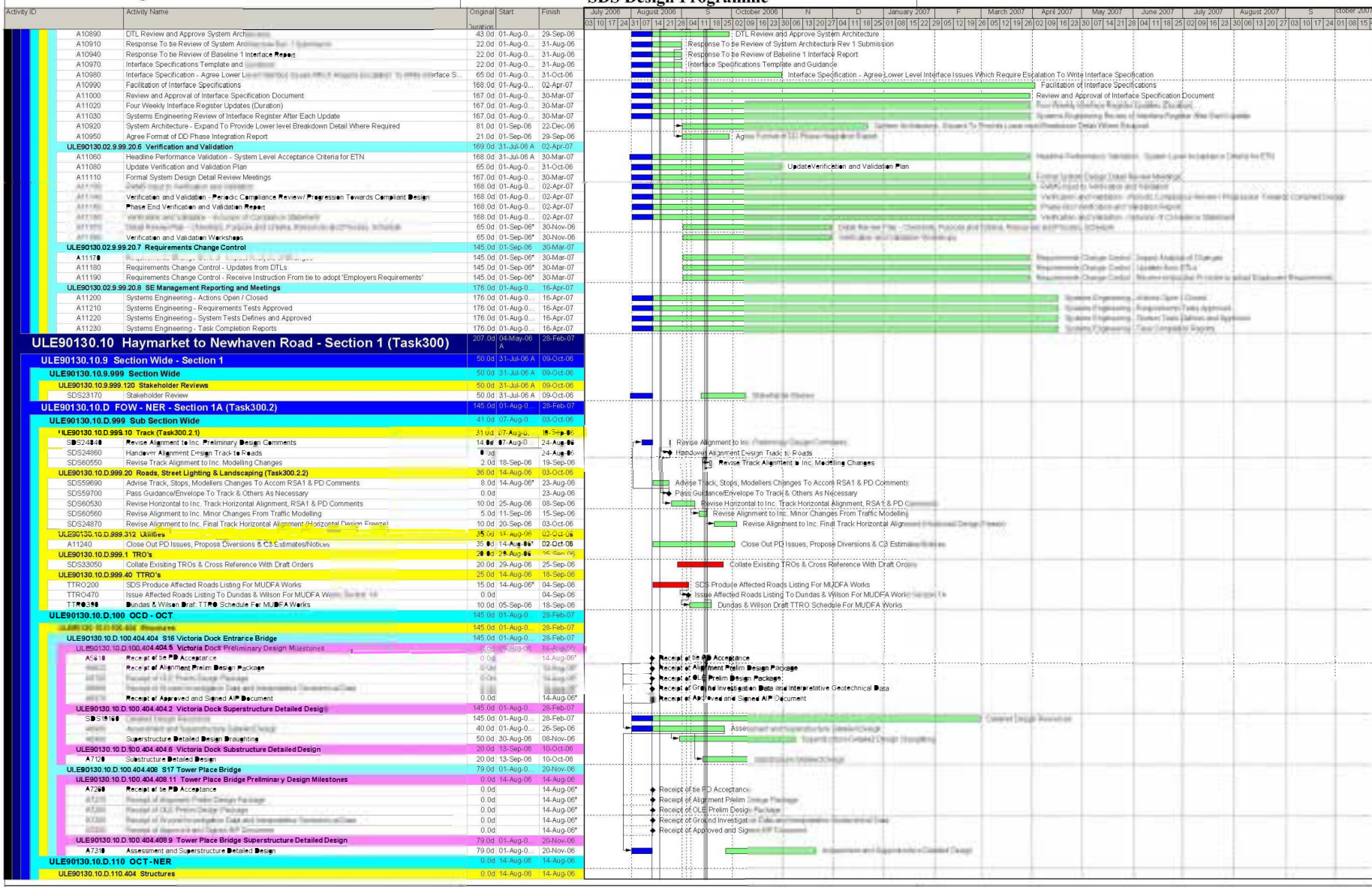
Actual Work Remaining Work Critical Remaining Work Milestone

CEC01359145_0016



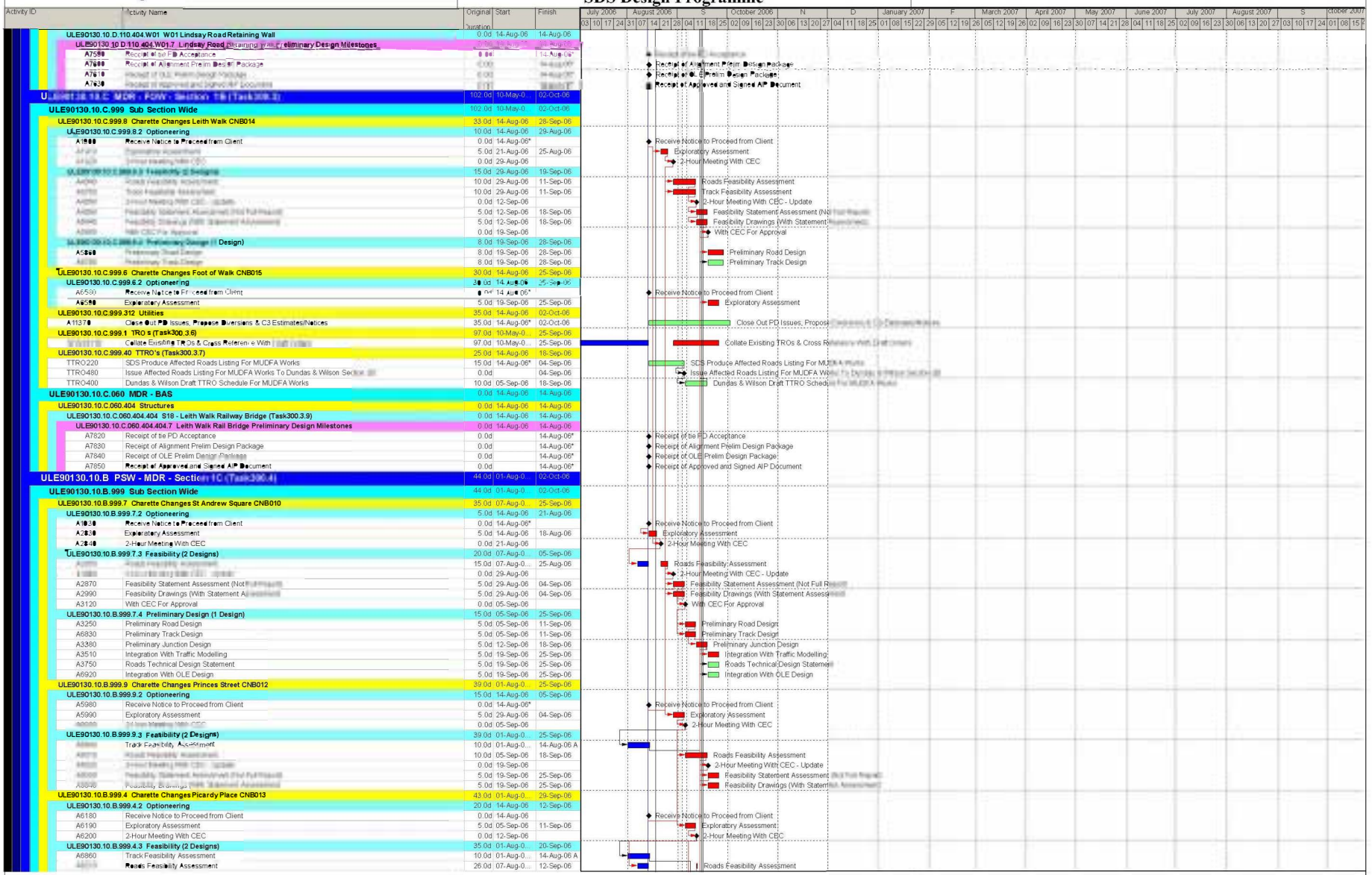
█ Actual Work █ Critical Remaining Work
█ Remaining Work ◆ Milestone

CEC01359145_0017



█ Actual Work
 █ Remaining Work
 █ Critical Remaining Work
 ◆ Milestone

CEC01359145_0018



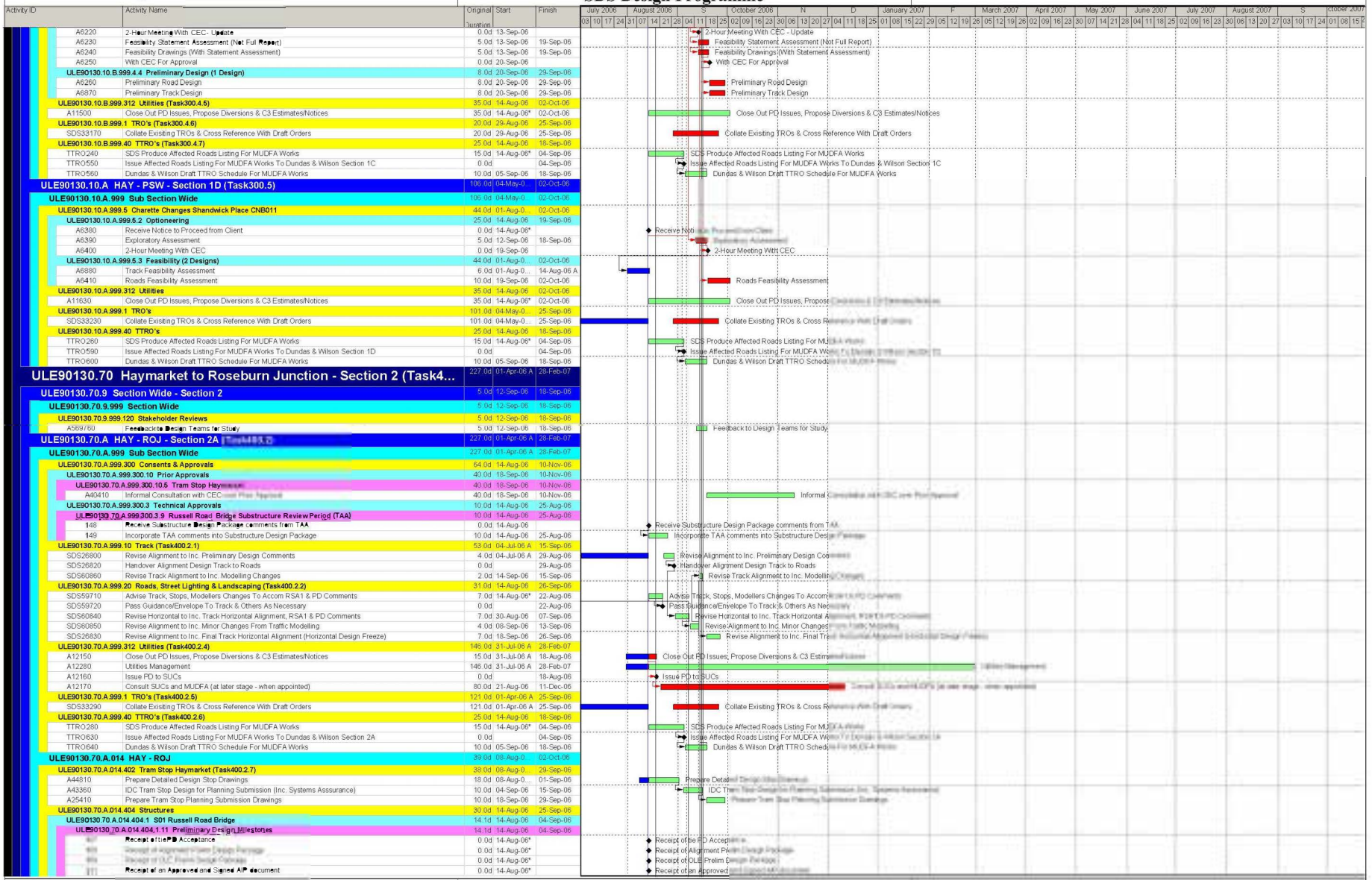
■ Actual Work ■ Critical Remaining Work
■ Remaining Work ◆ Milestone

CEC01359145_0019

ULE90130 SDS Edinburgh Tram

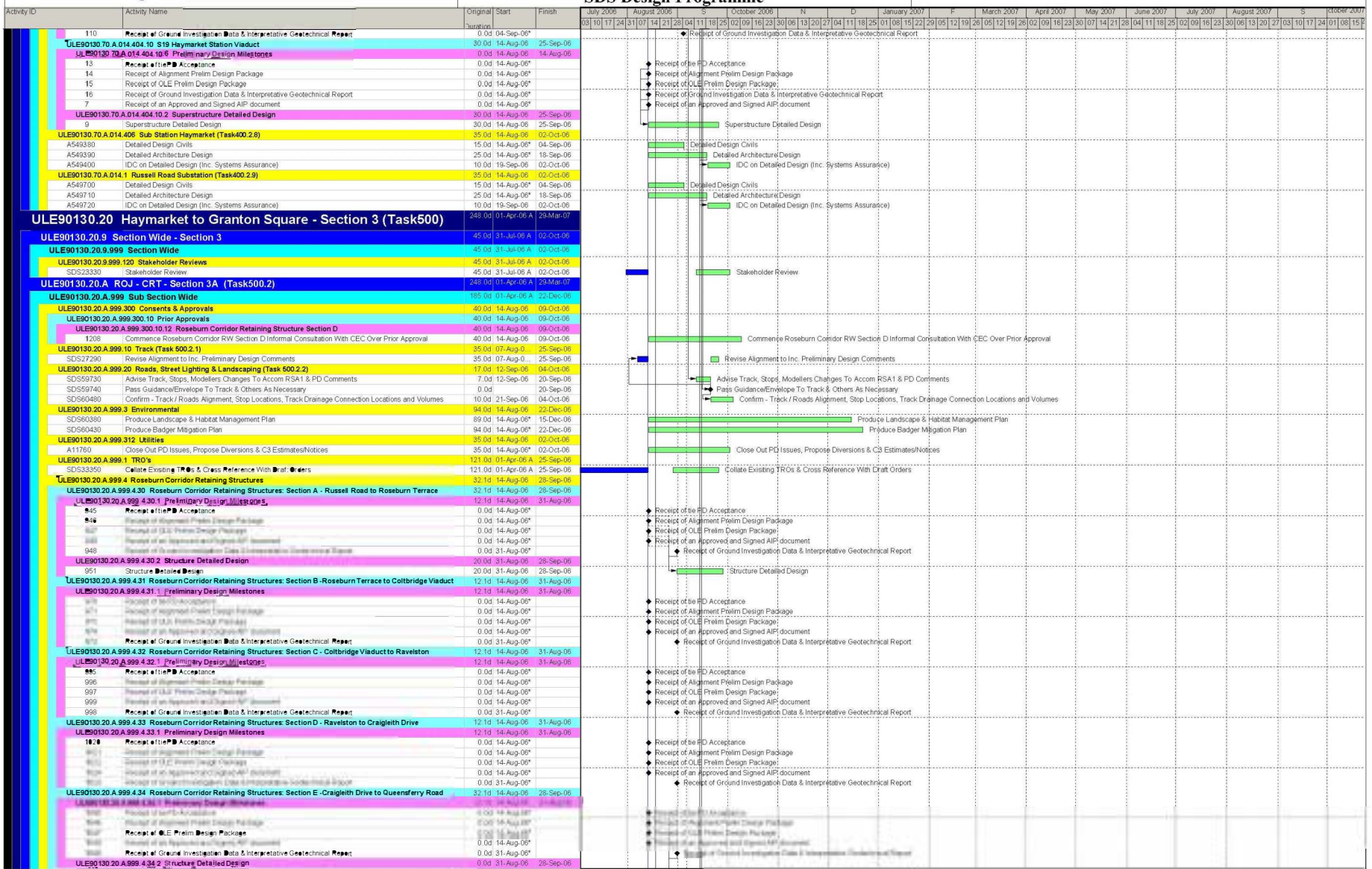
SDS Design Programme

01-Sep-06 12:01



CEC01359145_0020

█ Actual Work █ Critical Remaining Work █ Remaining Work ◆ Milestone



Actual Work Remaining Work Critical Remaining Work Milestone

CEC01359145_0021

Activity	Start Date	End Date	Notes
ULE90130.20.A.999.4.36 Roseburn Corridor Retaining Structures, Section F - Queensferry Road to Groathill	01-Aug-06	31-Aug-06	Structure Detailed Design
ULE90130.20.A.999.4.36.1 Preliminary Design Milestones	01-Aug-06	31-Aug-06	◆ Milestone
A1070	01-Aug-06	31-Aug-06	Receipt of PD Acceptance
A1071	01-Aug-06	31-Aug-06	Receipt of Alignment Prelim Design Package
A1072	01-Aug-06	31-Aug-06	Receipt of ULC Prelim Design Package
A1073	01-Aug-06	31-Aug-06	Receipt of Approved and Signed A/P Document
A1074	01-Aug-06	31-Aug-06	Receipt of Ground Investigation Data & Interpretative Geotechnical Report
ULE90130.20.A.999.4.36 Roseburn Corridor Retaining Structures, Section G - Groathill to Telford Road	01-Aug-06	31-Aug-06	Structure Detailed Design
ULE90130.20.A.999.4.36.1 Preliminary Design Milestones	01-Aug-06	31-Aug-06	◆ Milestone
A1075	01-Aug-06	31-Aug-06	Receipt of PD Acceptance
A1076	01-Aug-06	31-Aug-06	Receipt of Alignment Prelim Design Package
A1077	01-Aug-06	31-Aug-06	Receipt of ULC Prelim Design Package
A1078	01-Aug-06	31-Aug-06	Receipt of Approved and Signed A/P Document
A1079	01-Aug-06	31-Aug-06	Receipt of Ground Investigation Data & Interpretative Geotechnical Report
ULE90130.20.A.999.4.37 Roseburn Corridor Retaining Structures, Section H - Telford Road to Ferry Road	01-Aug-06	31-Aug-06	Structure Detailed Design
ULE90130.20.A.999.4.37.1 Preliminary Design Milestones	01-Aug-06	31-Aug-06	◆ Milestone
A1120	01-Aug-06	31-Aug-06	Receipt of PD Acceptance
A1121	01-Aug-06	31-Aug-06	Receipt of Alignment Prelim Design Package
A1122	01-Aug-06	31-Aug-06	Receipt of ULC Prelim Design Package
A1123	01-Aug-06	31-Aug-06	Receipt of Approved and Signed A/P Document
A1124	01-Aug-06	31-Aug-06	Receipt of Ground Investigation Data & Interpretative Geotechnical Report
ULE90130.20.A.010.ROJ - ROJ'S	01-Aug-06	31-Aug-06	Structure Detailed Design
ULE90130.20.A.010.404.10 S01 Roseburn Terrace Bridge	01-Aug-06	31-Aug-06	Structure Detailed Design
ULE90130.20.A.010.404.10.5 Roseburn Terrace Bridge Preliminary Design Milestones	01-Aug-06	31-Aug-06	◆ Milestone
A8870	01-Aug-06	31-Aug-06	Receipt of PD Acceptance
A8871	01-Aug-06	31-Aug-06	Receipt of Alignment Prelim Design Package
A8872	01-Aug-06	31-Aug-06	Receipt of ULC Prelim Design Package
A8873	01-Aug-06	31-Aug-06	Receipt of Approved and Signed A/P Document
A8874	01-Aug-06	31-Aug-06	Receipt of Ground Investigation Data & Interpretative Geotechnical Report
ULE90130.20.A.010.ROJ - RAD	01-Aug-06	31-Aug-06	Structure Detailed Design
ULE90130.20.A.020.404 Structures	01-Aug-06	31-Aug-06	Structure Detailed Design
ULE90130.20.A.020.404.10 S02 Colbride Viaduct	01-Aug-06	31-Aug-06	Structure Detailed Design
ULE90130.20.A.020.404.10.1 Colbride Viaduct Preliminary Design Milestones	01-Aug-06	31-Aug-06	◆ Milestone
A8370	01-Aug-06	31-Aug-06	Receipt of PD Acceptance
A8371	01-Aug-06	31-Aug-06	Receipt of Alignment Prelim Design Package
A8372	01-Aug-06	31-Aug-06	Receipt of ULC Prelim Design Package
A8373	01-Aug-06	31-Aug-06	Receipt of Approved and Signed A/P Document
A8374	01-Aug-06	31-Aug-06	Receipt of Ground Investigation Data & Interpretative Geotechnical Report
ULE90130.20.A.020.404.20 S03 St Georges School Access Bridge	01-Aug-06	31-Aug-06	Structure Detailed Design
ULE90130.20.A.020.404.20.1 St Georges School Access Bridge Preliminary Design Milestones	01-Aug-06	31-Aug-06	◆ Milestone
A8570	01-Aug-06	31-Aug-06	Receipt of PD Acceptance
A8571	01-Aug-06	31-Aug-06	Receipt of Alignment Prelim Design Package
A8572	01-Aug-06	31-Aug-06	Receipt of ULC Prelim Design Package
A8573	01-Aug-06	31-Aug-06	Receipt of Approved and Signed A/P Document
A8574	01-Aug-06	31-Aug-06	Receipt of Ground Investigation Data & Interpretative Geotechnical Report
ULE90130.20.A.020.404.20.2 St Georges School Access Bridge Structure Detailed Design	01-Aug-06	31-Aug-06	Structure Detailed Design
A8580	01-Aug-06	31-Aug-06	Receipt of PD Acceptance
A8581	01-Aug-06	31-Aug-06	Receipt of Alignment Prelim Design Package
A8582	01-Aug-06	31-Aug-06	Receipt of ULC Prelim Design Package
A8583	01-Aug-06	31-Aug-06	Receipt of Approved and Signed A/P Document
A8584	01-Aug-06	31-Aug-06	Receipt of Ground Investigation Data & Interpretative Geotechnical Report
ULE90130.20.A.020.404.30 S04 St Georges School Footbridge	01-Aug-06	31-Aug-06	Structure Detailed Design
ULE90130.20.A.020.404.30.1 St Georges School Footbridge Preliminary Design Milestones	01-Aug-06	31-Aug-06	◆ Milestone
A8770	01-Aug-06	31-Aug-06	Receipt of PD Acceptance
A8771	01-Aug-06	31-Aug-06	Receipt of Alignment Prelim Design Package
A8772	01-Aug-06	31-Aug-06	Receipt of ULC Prelim Design Package
A8773	01-Aug-06	31-Aug-06	Receipt of Approved and Signed A/P Document
ULE90130.20.A.030.RAD - CRA	01-Aug-06	31-Aug-06	Structure Detailed Design
ULE90130.20.A.030.404.10 S05 Ravelston Dykes Bridge	01-Aug-06	31-Aug-06	Structure Detailed Design
ULE90130.20.A.030.404.10.1 Ravelston Dykes Bridge Preliminary Design Milestones	01-Aug-06	31-Aug-06	◆ Milestone
A8970	01-Aug-06	31-Aug-06	Receipt of PD Acceptance
A8971	01-Aug-06	31-Aug-06	Receipt of Alignment Prelim Design Package
A8972	01-Aug-06	31-Aug-06	Receipt of ULC Prelim Design Package
A8973	01-Aug-06	31-Aug-06	Receipt of Approved and Signed A/P Document
A8974	01-Aug-06	31-Aug-06	Receipt of Ground Investigation Data & Interpretative Geotechnical Report
ULE90130.20.A.030.404.10.2 Ravelston Dykes Bridge Structure Detailed Design	01-Aug-06	31-Aug-06	Structure Detailed Design
SB35474 Detailed Design Resourcing	01-Aug-06	31-Aug-06	Structure Detailed Design
A8975	01-Aug-06	31-Aug-06	Receipt of PD Acceptance
A8976	01-Aug-06	31-Aug-06	Receipt of Alignment Prelim Design Package
A8977	01-Aug-06	31-Aug-06	Receipt of ULC Prelim Design Package
A8978	01-Aug-06	31-Aug-06	Receipt of Approved and Signed A/P Document
A8979	01-Aug-06	31-Aug-06	Receipt of Ground Investigation Data & Interpretative Geotechnical Report
ULE90130.20.A.030.404.20 Craigleith Drive Bridge	01-Aug-06	31-Aug-06	Structure Detailed Design
ULE90130.20.A.030.404.20.5 Craigleith Drive Bridge Preliminary Design Milestones	01-Aug-06	31-Aug-06	◆ Milestone
A9170	01-Aug-06	31-Aug-06	Receipt of PD Acceptance
A9171	01-Aug-06	31-Aug-06	Receipt of Alignment Prelim Design Package
A9172	01-Aug-06	31-Aug-06	Receipt of ULC Prelim Design Package
A9173	01-Aug-06	31-Aug-06	Receipt of Approved and Signed A/P Document
A9174	01-Aug-06	31-Aug-06	Receipt of Ground Investigation Data & Interpretative Geotechnical Report
ULE90130.20.A.030.404.20.2 Craigleith Drive Bridge Structure Detailed Design	01-Aug-06	31-Aug-06	Structure Detailed Design
A9180	01-Aug-06	31-Aug-06	Receipt of PD Acceptance
A9181	01-Aug-06	31-Aug-06	Receipt of Alignment Prelim Design Package
A9182	01-Aug-06	31-Aug-06	Receipt of ULC Prelim Design Package
A9183	01-Aug-06	31-Aug-06	Receipt of Approved and Signed A/P Document
A9184	01-Aug-06	31-Aug-06	Receipt of Ground Investigation Data & Interpretative Geotechnical Report
ULE90130.20.A.030.404.40 Craigleith Drive Bridge	01-Aug-06	31-Aug-06	Structure Detailed Design
A9175	01-Aug-06	31-Aug-06	Receipt of PD Acceptance
A9176	01-Aug-06	31-Aug-06	Receipt of Alignment Prelim Design Package
A9177	01-Aug-06	31-Aug-06	Receipt of ULC Prelim Design Package
A9178	01-Aug-06	31-Aug-06	Receipt of Approved and Signed A/P Document
A9179	01-Aug-06	31-Aug-06	Receipt of Ground Investigation Data & Interpretative Geotechnical Report

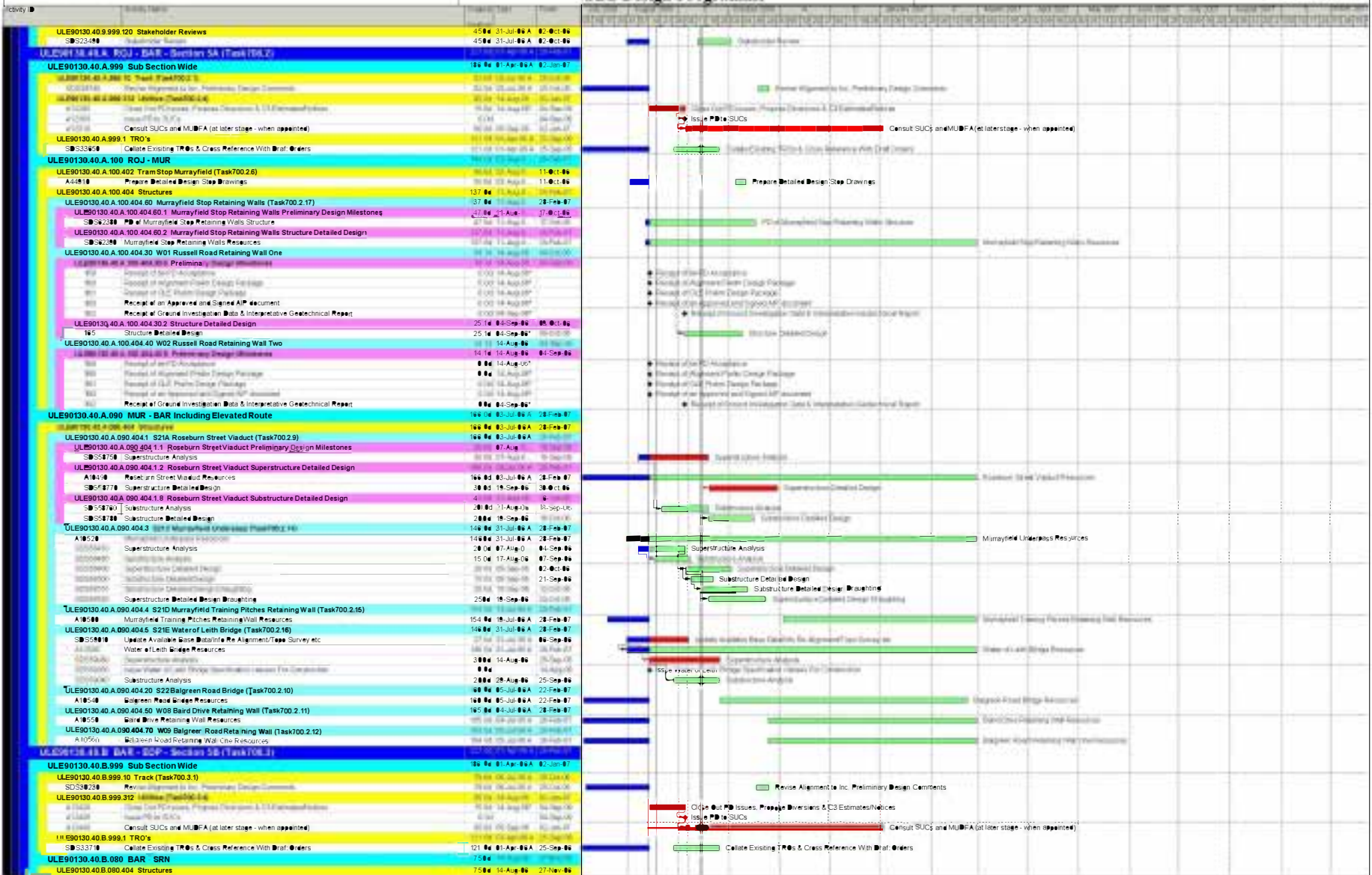
█ Actual Work █ Critical Remaining Work
█ Remaining Work ◆ Milestone

CEC01359145_0022

Activity ID	Activity Name	Original Start	Original Finish	July 2006	August 2006	September 2006	October 2006	November 2006	December 2006	January 2007	February 2007	March 2007	April 2007	May 2007	June 2007	July 2007	August 2007	September 2007	October 2007	
ULE90130.20.A.030.404.10 Queensferry Road Bridge Preliminary Design Milestones																				
A1308	Receipt of the PD Acceptance	0.0d	14-Aug-06*																	
A1309	Receipt of Alignment Prelim Design Package	0.0d	14-Aug-06*																	
A1310	Receipt of OLE Prelim Design Package	0.0d	14-Aug-06*																	
A1311	Receipt of Approved and Signed AIP Document	0.0d	14-Aug-06*																	
A1312	Receipt of Ground Investigation Data and Interpretative Geotechnical Data	0.0d	31-Aug-06*																	
ULE90130.20.A.040 CRA WGH																				
ULE90130.20.A.040.404 Structures																				
ULE90130.20.A.040.404.10 S09 Growth Road South Bridge																				
ULE90130.20.A.040.404.10.1 Growth Road South Bridge Preliminary Design Milestones																				
A1401	Receipt of the PD Acceptance	0.0d	14-Aug-06*																	
A1402	Receipt of Alignment Prelim Design Package	0.0d	14-Aug-06*																	
A1403	Receipt of OLE Prelim Design Package	0.0d	14-Aug-06*																	
A1404	Receipt of Approved and Signed AIP Document	0.0d	14-Aug-06*																	
A1405	Receipt of Ground Investigation Data and Interpretative Geotechnical Data	0.0d	14-Aug-06*																	
A1406	Receipt of Approved and Signed AIP Document	0.0d	31-Aug-06*																	
A1407	Receipt of Ground Investigation Data and Interpretative Geotechnical Data	13.0d	14-Aug-06																	
A1408	Receipt of the PD Acceptance	0.0d	14-Aug-06*																	
A1409	Receipt of Alignment Prelim Design Package	0.0d	14-Aug-06*																	
A1410	Receipt of OLE Prelim Design Package	0.0d	14-Aug-06*																	
A1411	Receipt of Approved and Signed AIP Document	0.0d	14-Aug-06*																	
A1412	Receipt of Ground Investigation Data and Interpretative Geotechnical Data	0.0d	31-Aug-06*																	
A1413	Receipt of Ground Investigation Data and Interpretative Geotechnical Data	13.0d	14-Aug-06																	
A1414	Receipt of the PD Acceptance	0.0d	14-Aug-06*																	
A1415	Receipt of Alignment Prelim Design Package	0.0d	14-Aug-06*																	
A1416	Receipt of OLE Prelim Design Package	0.0d	14-Aug-06*																	
A1417	Receipt of Approved and Signed AIP Document	0.0d	14-Aug-06*																	
A1418	Receipt of Ground Investigation Data and Interpretative Geotechnical Data	0.0d	31-Aug-06*																	
A1419	Receipt of Ground Investigation Data and Interpretative Geotechnical Data	13.0d	14-Aug-06																	
A1420	Receipt of the PD Acceptance	0.0d	14-Aug-06*																	
A1421	Receipt of Alignment Prelim Design Package	0.0d	14-Aug-06*																	
A1422	Receipt of OLE Prelim Design Package	0.0d	14-Aug-06*																	
A1423	Receipt of Approved and Signed AIP Document	0.0d	14-Aug-06*																	
A1424	Receipt of Ground Investigation Data and Interpretative Geotechnical Data	0.0d	31-Aug-06*																	
A1425	Receipt of Ground Investigation Data and Interpretative Geotechnical Data	13.0d	14-Aug-06																	
ULE90130.20.A.040.404 Sub Section Design (Task500.3)																				
A1426	Receipt of the PD Acceptance	0.0d	14-Aug-06*																	
A1427	Receipt of Alignment Prelim Design Package	0.0d	14-Aug-06*																	
A1428	Receipt of OLE Prelim Design Package	0.0d	14-Aug-06*																	
A1429	Receipt of Approved and Signed AIP Document	0.0d	14-Aug-06*																	
A1430	Receipt of Ground Investigation Data and Interpretative Geotechnical Data	0.0d	31-Aug-06*																	
A1431	Receipt of Ground Investigation Data and Interpretative Geotechnical Data	13.0d	14-Aug-06																	
ULE90130.20.A.050 WGH - CRT																				
ULE90130.20.A.050.404 Structures																				
ULE90130.20.A.050.404.20 W02 Ferry Road Retaining Wall																				
ULE90130.20.A.050.404.20.1 Ferry Road Retaining Wall Preliminary Design Milestones																				
A1432	Receipt of the PD Acceptance	0.0d	14-Aug-06*																	
A1433	Receipt of Alignment Prelim Design Package	0.0d	14-Aug-06*																	
A1434	Receipt of OLE Prelim Design Package	0.0d	14-Aug-06*																	
A1435	Receipt of Approved and Signed AIP Document	0.0d	14-Aug-06*																	
A1436	Receipt of Ground Investigation Data and Interpretative Geotechnical Data	0.0d	31-Aug-06*																	
A1437	Receipt of Ground Investigation Data and Interpretative Geotechnical Data	13.0d	14-Aug-06																	
ULE90130.20.B CRT - CAP - Section 3B (Task500.3)																				
ULE90130.20.B.999 Sub Section Wide																				
A1199	Close Out PD Issues, Propose Diversions & C3 Estimates/Notices	0.0d	02-Oct-06																	
SDS27780	Revise Alignment to Inc. Preliminary Design Comments	3.0d	17-Jul-06 A																	
SDS33410	Collate Existing TRO's & Cross Reference With Draft Orders	103.0d	02-May-0																	
TTR0300	SDS Produce Affected Roads Listing For MUDFA Works	15.0d	14-Aug-06*																	
TTR0670	Issue Affected Roads Listing For MUDFA Works To Dundas & Wilson	0.0d	04-Sep-06																	
TTR0680	Dundas & Wilson Draft TTR0 Schedule For MUDFA Works	10.0d	05-Sep-06																	
ULE90130.20.B.060 CRT - WGA																				
ULE90130.20.B.060.404.10 S12 Crewe Road Gardens Bridge																				
ULE90130.20.B.060.404.10.1 Crewe Road Gardens Bridge Preliminary Design Milestones																				
A1899	Receipt of the PD Acceptance	0.0d	14-Aug-06*																	
A1900	Receipt of Alignment Prelim Design Package	0.0d	14-Aug-06*																	
A1901	Receipt of OLE Prelim Design Package	0.0d	14-Aug-06*																	
A1902	Receipt of Approved and Signed AIP Document	0.0d	14-Aug-06*																	
A1903	Receipt of Ground Investigation Data and Interpretative Geotechnical Data	0.0d	31-Aug-06*																	
A1904	Receipt of Ground Investigation Data and Interpretative Geotechnical Data	13.0d	14-Aug-06																	
ULE90130.20.B.070 WGA - CAP																				
ULE90130.20.B.070.406 Sub Station Grant Main East (Task500.3.9)																				
A54950	Detailed Design Civils	15.0d	14-Aug-06*																	
A54950	Detailed Architecture Design	25.0d	14-Aug-06*																	
A550350	Issue for Construction Drawings	0.0d	14-Aug-06																	
A550300	IDC on Detailed Design (Inc. Systems Assurance)	10.0d	19-Sep-06																	
ULE90130.20.C CAP - GRS - Section 3C (Task500.4)																				
ULE90130.20.C.999 Sub Section Wide																				
SDS28270	Revise Alignment to Inc. Preliminary Design Comments	95.0d	10-Jul-06 A																	
A12300	Close Out PD Issues, Propose Diversions & C3 Estimates/Notices	35.0d	14-Aug-06*																	
SDS33470	Collate Existing TRO's & Cross Reference With Draft Orders	121.0d	01-Aug-06 A																	
TTR0320	SDS Produce Affected Roads Listing For MUDFA Works	15.0d	14-Aug-06*																	
TTR0730	Issue Affected Roads Listing For MUDFA Works To Dundas & Wilson	0.0d	04-Sep-06																	
TTR0740	Dundas & Wilson Draft TTR0 Schedule For MUDFA Works	10.0d	05-Sep-06																	
ULE90130.20.C.080 CAP - GRW																				
ULE90130.20.C.080.406 Sub Station Granton Road (Task500.4.10)																				
A549540	Detailed Design Civils	15.0d	14-Aug-06*																	
A549550	Detailed Architecture Design	25.0d	14-Aug-06*																	
A549560	IDC on Detailed Design (Inc. Systems Assurance)	10.0d	19-Sep-06																	
ULE90130.40 Roseburn Junction to Gogarburn - Section 5 (Task7...																				
ULE90130.40.9 Section Wide - Section 5																				
ULE90130.40.9.999 Section Wide																				

■ Actual Work ■ Critical Remaining Work
■ Remaining Work ◆ Milestone

CEC01359145_0023



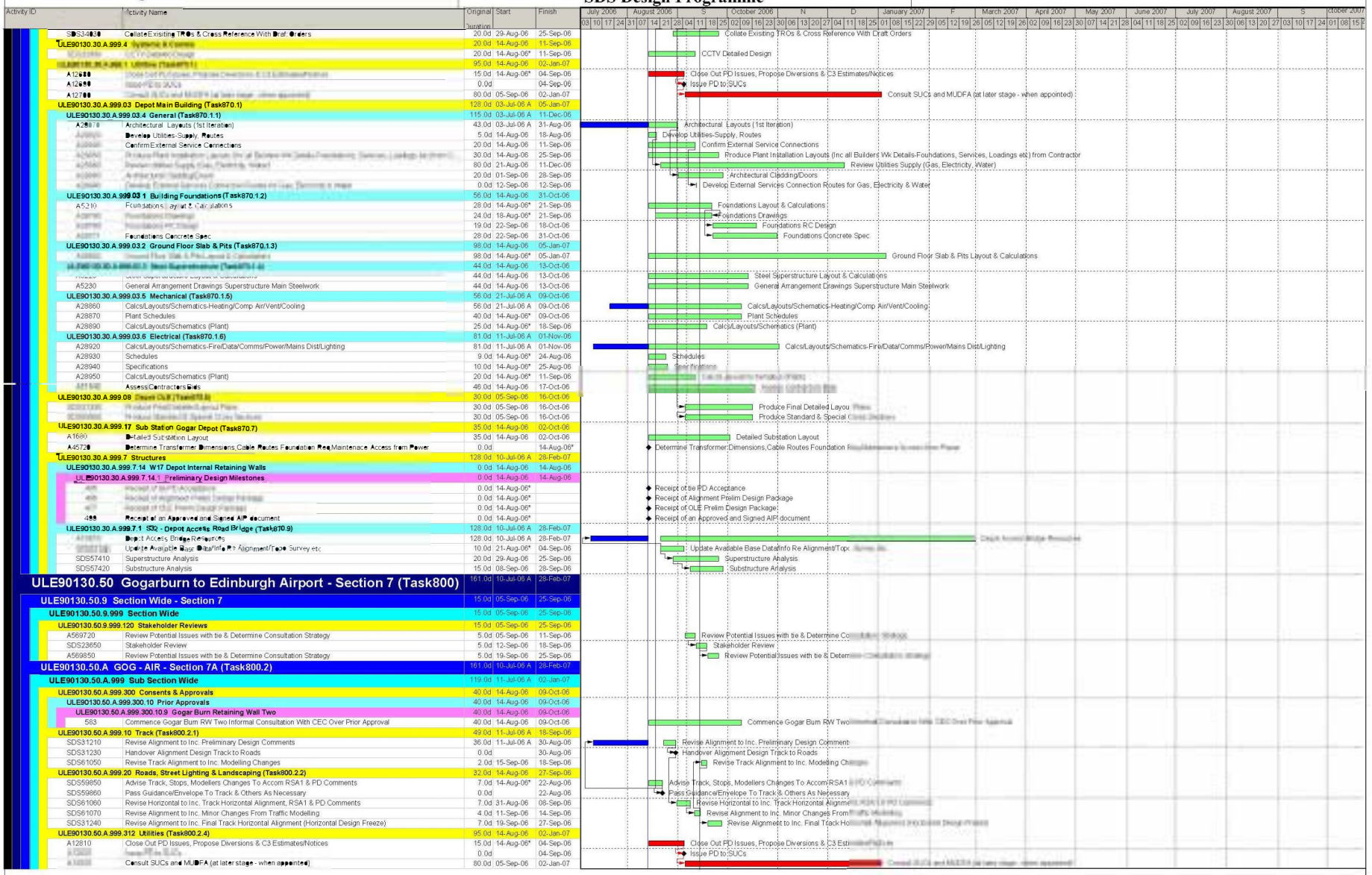
█ Actual Work █ Critical Remaining Work
█ Remaining Work ◆ Milestone

CEC01359145_0024

Activity ID	Activity Name	Original Start	Original Finish	Actual Start	Actual Finish	Remaining Work	Critical Remaining Work
ULE90130.40.B.080.404.S02	Superstructure Detailed Design	75.0d	14-Aug-06	27-Nov-06			
219	Receipt of the PD Acceptance	0.0d	14-Aug-06				
220	Receipt of Alignment Prelim Design Package	0.0d	14-Aug-06				
221	Receipt of OLE Prelim Design Package	0.0d	14-Aug-06				
222	Receipt of Ground Investigation Data & Interpretive Geotechnical Report	0.0d	14-Aug-06				
223	Receipt of an Approved and Signed AIP document	0.0d	14-Aug-06				
ULE90130.40.B.080.404.S04	Superstructure Detailed Design	50.0d	14-Aug-06	23-Oct-06			
226	Superstructure Detailed Design	50.0d	14-Aug-06	27-Nov-06			
ULE90130.40.B.080.404.S04	Existing Saughton Road Bridge	0.0d	14-Aug-06	14-Aug-06			
ULE90130.40.B.080.404.S04.1	Preliminary Design Milestones	0.0d	14-Aug-06	14-Aug-06			
218	Receipt of the PD Acceptance	0.0d	14-Aug-06				
219	Receipt of Alignment Prelim Design Package	0.0d	14-Aug-06				
220	Receipt of OLE Prelim Design Package	0.0d	14-Aug-06				
221	Receipt of Ground Investigation Data & Interpretive Geotechnical Report	0.0d	14-Aug-06				
222	Receipt of an Approved and Signed AIP document	0.0d	14-Aug-06				
ULE90130.40.B.080.404.S06	Sub Station Jenner's Depository (Task700.3.9)	25.0d	29-Aug-06	02-Oct-06			
A54778	Detailed Arch Design	15.0d	29-Aug-06	18-Sep-06			
A549790	Detailed Arch Design	25.0d	29-Aug-06	02-Oct-06			
ULE90130.40.B.070	SRN - Structures	163.0d	06-Jul-06	28-Feb-07			
ULE90130.40.B.070.404	Structures	163.0d	06-Jul-06	28-Feb-07			
ULE90130.40.B.070.404.10	306 Existing Broomhouse Road Bridge	88.0d	14-Aug-06	14-Aug-06			
ULE90130.40.B.070.404.10.1	Preliminary Design Milestones	88.0d	14-Aug-06	14-Aug-06			
218	Receipt of the PD Acceptance	0.0d	14-Aug-06				
219	Receipt of Alignment Prelim Design Package	0.0d	14-Aug-06				
220	Receipt of OLE Prelim Design Package	0.0d	14-Aug-06				
221	Receipt of Ground Investigation Data & Interpretive Geotechnical Report	0.0d	14-Aug-06				
222	Receipt of an Approved and Signed AIP document	0.0d	14-Aug-06				
ULE90130.40.B.070.404.20	S28 South City Access Road Bridge (Task700.3.12)	163.0d	06-Jul-06	28-Feb-07			
A10571	South City Access Bridge Resources	35.0d	07-Aug-06	25-Sep-06			
ULE90130.40.B.070.404.50	W11 Bankhead Drive Retaining Wall (Task700.3.11)	161.0d	06-Jul-06	28-Feb-07			
A18188	Bankhead Drive Retaining Wall Resources	161.0d	06-Jul-06	28-Feb-07			
SS55718	Retaining Wall Detailed Design	25.0d	29-Aug-06	02-Oct-06			
ULE90130.40.B.060	SGA - EPS	40.0d	14-Aug-06	09-Oct-06			
ULE90130.40.B.060.404.10	Edinburgh Park Station Viaduct	40.0d	14-Aug-06	09-Oct-06			
ULE90130.40.B.060.404.10.6	Superstructure Detailed Design	0.0d	14-Aug-06	14-Aug-06			
55	Receipt of the PD Acceptance	0.0d	14-Aug-06				
56	Receipt of Alignment Prelim Design Package	0.0d	14-Aug-06				
57	Receipt of OLE Prelim Design Package	0.0d	14-Aug-06				
58	Receipt of Ground Investigation Data & Interpretive Geotechnical Report	0.0d	14-Aug-06				
59	Receipt of an Approved and Signed AIP document	0.0d	14-Aug-06				
61	Superstructure Detailed Design	40.0d	14-Aug-06	09-Oct-06			
ULE90130.40.C	EDP - GOG - Section 5C (Task700.4)	206.0d	05-May-07	28-Feb-07			
ULE90130.40.C.999	Sub Section Wide	165.0d	05-May-07	02-Jan-07			
ULE90130.40.C.999.10	Track (Task700.4.1)	57.0d	10-Jul-06	27-Sep-06			
SDS30720	Revise Alignment to Inc. Preliminary Design Comments	57.0d	10-Jul-06	27-Sep-06			
ULE90130.40.C.999.20	Roads, Street Lighting & Landscaping (Task700.4.2)	7.0d	11-Sep-06	19-Sep-06			
SDS59830	Advise Track Stops, Modifiers Changes to Accom RSA1 & PD Comments	7.0d	11-Sep-06	19-Sep-06			
SDS59840	Pass Guidance/Envelope To Track & Others As Necessary	0.0d		19-Sep-06			
ULE90130.40.C.999.312	Utilities (Task700.4.4)	95.0d	14-Aug-06	02-Jan-07			
A12550	Close Out PD Issues, Propose Diversions & C3 Estimates/Notices	15.0d	14-Aug-06	04-Sep-06			
A12560	Issue PD to SUCs	0.0d		04-Sep-06			
A12570	Consult SUCs and MUDFA (at later stage - when appointed)	80.0d	05-Sep-06	02-Jan-07			
ULE90130.40.C.999.1	TRO's	100.0d	05-May-07	25-Sep-06			
SDS33770	Collate Existing TRO's & Cross Reference With Draft Orders	100.0d	05-May-07	25-Sep-06			
ULE90130.40.C.999.40	TTRO's	25.0d	14-Aug-06	18-Sep-06			
TTR0340	SDS Produce Affected Roads Listing For MUDFA Works	15.0d	14-Aug-06	04-Sep-06			
TTR0750	Issue Affected Roads Listing For MUDFA Works To Dundas & Wilson	0.0d		04-Sep-06			
TTR0760	Dundas & Wilson Draft TTR0 Schedule For MUDFA Works	10.0d	05-Sep-06	18-Sep-06			
ULE90130.40.C.030	GYL - DEH (including A8 Underpass)	162.0d	07-Jul-06	28-Feb-07			
ULE90130.40.C.030.404	Structures	162.0d	07-Jul-06	28-Feb-07			
ULE90130.40.C.030.404.60	A8 Retaining Walls (Task870.11)	142.0d	04-Aug-06	28-Feb-07			
SDS52210	A8 Retaining Wall Resources	142.0d	04-Aug-06	28-Feb-07			
ULE90130.40.C.030.404.10	S28 A8 Underpass (Task700.4.9)	162.0d	07-Jul-06	28-Feb-07			
A10590	A8 Underpass Resources	162.0d	07-Jul-06	28-Feb-07			
ULE90130.30	GDE DEPOT - Section 6 (Task870)	133.0d	03-Jul-06	28-Feb-07			
ULE90130.30.A	GDE DEPOT - Section Wide	133.0d	03-Jul-06	28-Feb-07			
ULE90130.30.A.999	DEPOT	133.0d	03-Jul-06	28-Feb-07			
ULE90130.30.A.999.120	Stakeholder Reviews	10.0d	12-Sep-06	25-Sep-06			
SDS22570	Stakeholder Review	5.0d	12-Sep-06	18-Sep-06			
A598830	Review Potential Issues with Be & Determine Consultation Strategy	5.0d	19-Sep-06	25-Sep-06			
ULE90130.30.A.999.11	Track (Task870.2)	31.0d	11-Aug-06	25-Sep-06			
A4190	Design Alignment	15.0d	11-Aug-06	04-Sep-06			
A4290	IDC Track Design	10.0d	05-Sep-06	18-Sep-06			
A4580	Revise Final Alignment to Inc. IDC Comments	5.0d	19-Sep-06	25-Sep-06			
ULE90130.30.A.999.9	TRO's	20.0d	29-Aug-06	25-Sep-06			

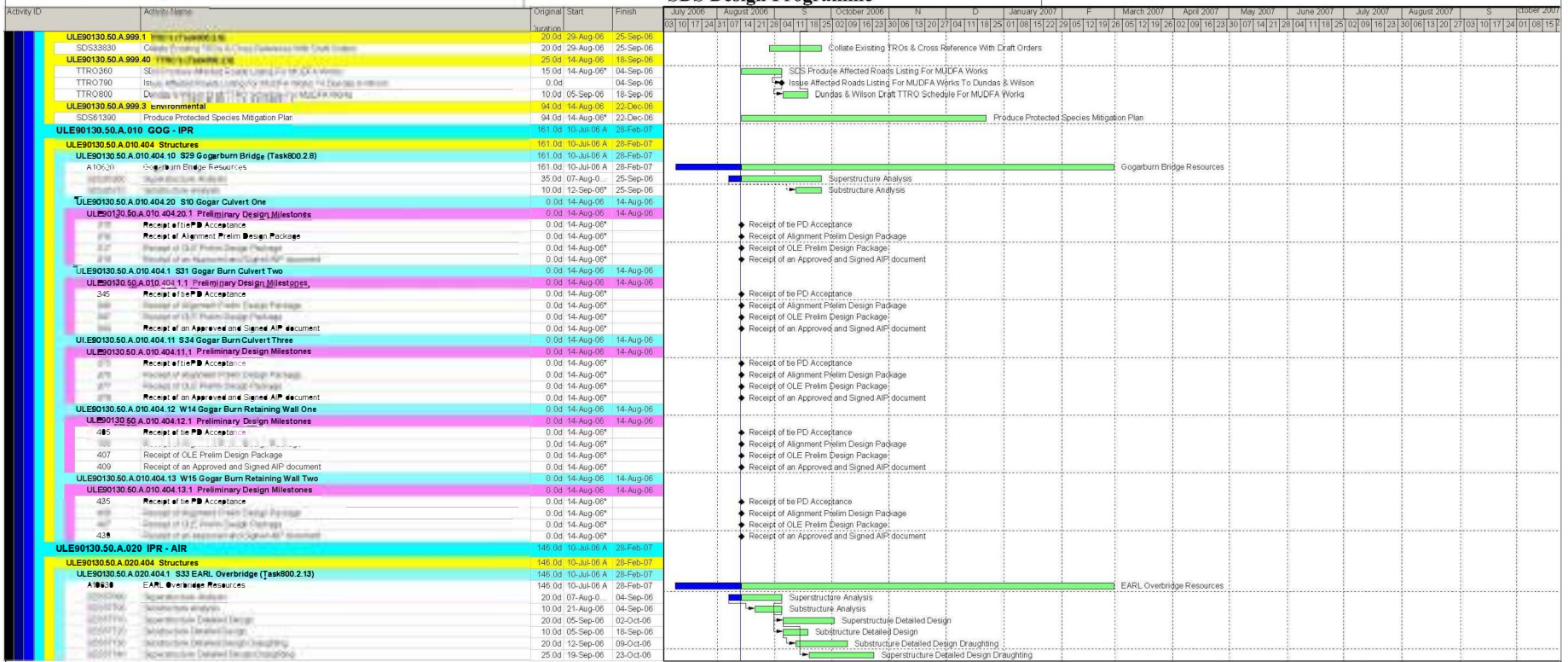
■ Actual Work ■ Critical Remaining Work
■ Remaining Work ◆ Milestone

CEC01359145_0025



█ Actual Work █ Critical Remaining Work
█ Remaining Work ◆ Milestone

CEC01359145_0026



█ Actual Work █ Critical Remaining Work
█ Remaining Work ◆ Milestone

CEC01359145_0027

This document was created with Win2PDF available at <http://www.daneprairie.com>.
The unregistered version of Win2PDF is for evaluation or non-commercial use only.

CEC01359145_0028