

APPENDIX 4

PROJECT CARLISLE SCOPE

As previously stated, we have updated this Revised Proposal to reflect the scope Infraco will be able to agree on. In essence, we will carry out the works shown on the GMP Drawings for scope of work between the Airport to Haymarket, and the enabling works.

In General

The Guaranteed Maximum Price is for the construction and delivery of the design shown on the drawings, specifications, schedules and submissions contained in the electronic record of "GMP Drawings", as they pertain to the scope of work. Changes in Procurement Laws, Tax Rates, Design Standards or Specifications, or changes in the Code of Construction Practice shall be considered a tie Change.

For the avoidance of doubt and further reference below to the Guaranteed Maximum Price being based on the GMP Drawings in the individual localities, is simply for added emphasis. Infraco shall not be obliged to build anything other than the design shown in the GMP Drawings unless instructed otherwise by tie through a tie Change Order, or as negotiated between the Parties.

Specific Identification of the Scope

1. **HAYMARKET TO AIRPORT (including Enabling Works)**
 - 1.1.1 Haymarket Corridor (chainages 200000 to 200814)
 - 1.1.2 Roseburn Junction to Balgreen (chainages 510000 to 511477);
 - 1.1.3 Balgreen to Edinburgh Park Central (chainages 520000 to 524555);
 - 1.1.4 Edinburgh Park Central to Gogar (chainages 530000 to 531898);
 - 1.1.5 Gogar Depot;
 - 1.1.6 Gogar to Edinburgh Airport (chainages 710000 to 712580).
- 1.2 All enabling works as shown in the sketches included in Infraco's Project Carlisle Proposal, dated 29 July 2010:
- 1.3 The completed, approved, assured, integrated and compliant Design for the Edinburgh Tram Network Phases 1a, to include certification thereof by each Infraco Member, the SDS Provider and any Infraco Party or SDS Provider Party involved in the production or development of Design or the Infraco's Design.

Exclusions and Qualifications

Roseburn Viaduct

Pricing is based as defined in the electronic record of "GMP Drawings" which are the IFEA Drawings (issued for external Approval) issued to CEC and Scottish Power for approval. Any impact on the design of the "GMP Drawings" shall be dealt with separately as a tie Change and an appropriate tie Change Order will be issued.

Pricing is based on the basis of an inclusion within GMP, the installation of a suitable and secure gate at the entrance to the portal (S502) to prevent unwarranted access to the Haymarket Rail Depot and potential for graffiti within the portal structure and on the basis of an inclusion within GMP, the installation of a "Trespa" system or similar approved architectural lightweight cladding finish on the face of the street facing walls of S501, S503 and S504 as an additional anti-graffiti measure and to improve the amenity of the area, a small area of additional soft landscaping up to a maximum area of 30m², and the installation of false walls in front of the abutments of S504 based on the "Trespa" system or similar to match the cladding of the street facing walls. Initial details are shown on Drawing Number ULE90130-05-PLG-00265 rev 2 draft *[based on attached sketch, to be further developed]* (See Appendix 3).

Gogarburn Landfill Site (Section 7A)

The Guaranteed Maximum Price is based on tie's recommendation, which is included in the electronic record of "GMP Drawings", which amends trackform to ballast and includes a track retaining structure in the vicinity of the 50m radius curve to the east of Gogarburn Bridge and an element of earth retention. The GMP Programme assumes that a maximum three month surcharge period is required and that access will thereafter be available to Infracore in accordance with its GMP Programme.

Outstanding Approvals etc.

Consents from Third Parties, in so far as it is required to obtain agreement of approval, have been identified when possible in the Programme. In the event other Consents or Third Party Approvals are required they shall be procured by tie in accordance with the GMP Programme, and in the event of a delay or additional cost Infracore shall be compensated by tie Change Order.

Trackform Type Confirmation

The trackform type at each location is based on the actual design as defined in the electronic record of "GMP Drawings"

Murrayfield Stadium Accommodation Works

These works are being carried out by others with an expected completion date of 31 October 2010. The GMP Programme is based upon this completion date and assumes that access will be available thereafter in accordance with the GMP Programme.

South Gyle Access Bridge – sewer clash at [Structure Number 26]

The sewer is being diverted by others with an expected completion date of 31 October 2010. The GMP Programme is based upon this completion date and assumes that access will be available thereafter in accordance with the GMP Programme.

The Guaranteed Maximum Price is based on the Drawings as included in the electronic record of "GMP Drawings".

Gogar Interchange

The Guaranteed Maximum Price does not include for the Gogar Interchange. The Guaranteed Maximum Price is based on the GMP Drawings.

New Ingliston Limited ('NIL')

The Guaranteed Maximum Price is based on the Drawings to be included in the electronic record of "GMP Drawings", and the drawings attached (See Appendix 3)

Airport Retaining Walls W14 & W15

The Guaranteed Maximum Price is based on an alternative piling solution to that shown in the electronic record of "GMP Drawings". As such, the fully developed drawings will not constitute a tie Change, to the extent of the revisions to the alternative piling solution. However, in the event that an alternative piling solution cannot be achieved, the return to the original piling solution will constitute a tie Change. Any changes required to accommodate the outcome of the flood modelling works are not at the risk of Infracore save for alterations required to the weir within Culvert No.3, as indicated on the drawing attached (See Appendix 3).

Airport Kiosk Design

No further future proofing is allowed in the Guaranteed Maximum Price.

The Guaranteed Maximum Price is based on the current developed elliptical design which is included on the drawings as included in the electronic record of "GMP Drawings".

Tramstop Design

The Guaranteed Maximum Price is based on the Drawings as included in the electronic record of "GMP Drawings".

Substation Design

The Guaranteed Maximum Price is based on the Drawings as included in the electronic record of "GMP Drawings".

Protection of Services

The protection and support of the gas main along Russell Road, as well any unknown service, is excluded from the Guaranteed Maximum Price. The protection and support of known services have been included in the GMP. The known services are:

INTC	Area and Description of Works
51	TNC002 : Utilities diversions & associated works - Section 5a.
52	TNC003 : Utilities diversions & associated works -Section 5b.
53	TNC004 : Utilities diversions & associated works - Section 5c. (excl 5C/PW/D/003)
53a	Section 5C - SW Diversion 5C/PW/D/003 at Gogar Roundabout
267	Carry out Scottish Water Diversion at Gogar Roundabout
268	Carry out Scottish Power Diversion at Gogar Roundabout
302	Protection of live utilities at Russell Road Bridge during construction
340	Edinburgh Park Bridge South Abutment Base - Existing service (cable)
361	Scottish Power Utility Diversion Murrayfield Underpass
369	Temp works for Thus and C & W and dismantle water main at A8 Underpass
431	Slew existing BT duct at A8 underpass
474.	Additional manhole requirement - Section 5B
475	A8 Underpass - BT works - Slew 2 way and 4 way ducts
479	Proposed sewer lining at Water of Leith Bridge
517	Scottish Power Utility Diversion 5A/SP/D/05 at Russell Road Retaining Wall
523	A8 Underpass - support and protect BT equipment
555	Section 5B - Busgate, protection / diversion of existing services
559	5C A8 Underpass - SGN Diversion
560	5C - A8 Underpass - Grouting of existing sewer
561	5C.- SP Cable at Gyle Stop Retaining Wall (Conflict ref 5C/SP/11)
577	Section 5C - W19 Gyle Stop RTW - Protection of existing services
601	5B - Busgate - SP LV Cable
602	5B - Busgate - Scottish Water existing Sewer
604	5B - Busgate - Street lighting power supply cable and ducting
611	5B - Busgate - Existing drainage
616	A8 Underpass - slew & protect GEONET apparatus
635	2A Haymarket Viaduct - Existing BT cable and drainage pipe

Landscaping

In respect of landscaping works, Infracore shall be deemed to have met all requirements relevant to landscaping which are necessary to enable the issue of a Certificate of Sectional Completion provided that the only outstanding works relate to planting. Infracore shall then carry out the planting works at the beginning of the next planting season.

Section 2A at Haymarket: Phase 1a/1b Interface Design

The Guaranteed Maximum Price is based on the Drawings as included in the electronic record of "GMP Drawings". The Guaranteed Maximum Price does not include any work within Section 3A as part of Phase 1a or Phase 1b.

Network Rail: Form C Submissions

The Guaranteed Maximum Price is based on the standard requirements for Form C submissions and on approvals being given in line with the Programme. tie shall assist the Infraco in obtaining all relevant approvals.

Third Party Agreements at Edinburgh Park and Airport

The timetable constraints as detailed in the Third Party Agreement licence with Edinburgh Airport Ltd. (EAL), other than agreeing respective completion dates for the approved packages are not applicable in executing the scope of Project Carlisle.

The existing New Edinburgh Ltd. (NEL) license has deadlines of 18 months (excluding Edinburgh Park Viaduct) and 24 months (at the viaduct), which are about to expire. For the purposes of the Guaranteed Maximum Price Infraco has assumed that the required timeframes can be agreed with NEL by tie / CEC to allow Infraco to construct, test and commission in accordance with the GMP Programme.

Any impact of these dates on the GMP Programme shall be dealt with separately as a tie Change and an appropriate tie Change Order will be issued.

Overall Traffic Management Model Approval

The Guaranteed Maximum Price is based on the drawings, specifications and schedules ("GMP Drawings"). The Infraco shall comply with the requirements of the Employer's Requirements. Any required Change to the Employer's Requirements or any preferential or other design changes required by CEC will be dealt with separately as a tie Change and an appropriate tie Change Order will be issued.

OLE Vehicle Impact Report

Infraco is responsible for obtaining CEC's acceptance and agreement provided such acceptance and agreement is provided in accordance with the timescales assumed in the programme. To date, CEC has not responded within the Approval Period as specified within the Infraco Contract. Any required Change due to late comments by CEC will be dealt with separately as a tie Change and an appropriate tie Change Order will be issued.

Lochside Avenue Junction

The Guaranteed Maximum Price is based on the drawings, specifications and schedules approved by CEC on 20 May 2010 and included in the electronic record of "GMP Drawings". The Guaranteed Maximum Price assumes no further comments or Informatives raised by CEC beyond those comments provided with the Approval of this design.

Changes to Traffic Regulation Orders (TROs)

tie is responsible for promotion and making of all necessary TROs to meet the PC Programme. tie confirms that Infraco have provided all necessary documentation and support required to support TRO 1 (defined as necessary for tram operations) for all on-street (Line 1) and off street (Line 2) sections. Further, Infraco is not responsible for the cost of any changes or amendments to any TRO documentation (drawings, schedules or reports) or to the design as a result of the TRO process or for any delays to the PC Programme due to a delay in the TRO process. Infraco is not responsible for the cost of any abortive works or delays due to the final "made" TRO impacting on the IFC design or changes to the GMP Drawings.

Drainage Alignment Drawings (Off-Street)

Any changes required to the current design on the drawings, specifications and schedules ("GMP Drawings), including both the impact on design and in construction, shall be dealt with separately as a tie Change and an appropriate tie Change Order will be issued.

OLE Interface at Tower Place Bridge

The Guaranteed Maximum Price is based on the drawings, specifications and schedules ("GMP Drawings").

OLE Interface at Russell Road Retaining Walls 3 & 4

The Guaranteed Maximum Price is based on the drawings, specifications and schedules ("GMP Drawings").

Interfaces with Energy Suppliers at Depot

Agreement for Local Power supply, meter arrangements, and gas supply, in this area remain outstanding. Additional issues regarding Way-leave clarification are also outstanding. Any further delay in these matters incurred beyond 12 July 2010 shall be to the full responsibility of tie, and subject to an extension of time.

Washing Plant

The Guaranteed Maximum Price is based on the Siemens proposal and the actual status of design. Any additional arrangements shall be subject to a tie Notice of Change and an appropriate tie Change Order will be issued.

Combined Poles

The Guaranteed Maximum Price includes in the material and equipment the complete set of pole extensions required to allow for the implementation of the street lighting integrated with the OLE poles for the original scope of work as indicated on the GMP Drawings.

Cable ducts

Cable duct connections between ETN and the Urban Traffic Control (UTC) and the City in View CCTV Control in a size of 150 mm diameter are not allowed in the Guaranteed Maximum Price due to an outstanding clarification on the right of way and the related design. For the execution of this work a tie change order may be required.

Noise & Vibration

Due to outstanding issues, the design and construction of the Floating Slab (Floating Track) as a Noise & Vibration protecting measures, no allowance has been made in the Guaranteed Maximum Price and a tie change order may be required.

HV / LV Supplies

The Guaranteed Maximum Price includes the value confirmed in TNC 014. (INF CORR 2304/RE). Any modification required for the HV / LV supply shall be subject to additional tie change order.

Utilities / Utility Works

The Guaranteed Maximum Price does not include for any Utilities, utilities or any Utilities Works that will be required to accommodate the Infraco Works other than those that have already been implemented through a tie Change Order.

Contaminated Materials

The Guaranteed Maximum Price includes for dealing with contamination, in the locations listed below, to a maximum aggregate quantity of 51,000 cubic metres, comprised of 13,000 cubic metres of hazardous material, and the remaining 38,000 considered non-hazardous. Any additional amounts shall be addressed through a tie Change Order.

2A Haymarket Yards Replacement Carpark
2A Russell Road RWs W3 & W4 including temporary stockpile on Haymarket Yards Car Park
W18 Retaining Wall at Murrayfield Tramstop
S21B and D Murrayfield Stadium and Training Pitches Retaining Walls
W8 Baird Drive Retaining Wall
S23 Carricknowe Bridge South Approach Ramp
5B Edinburgh Park Bridge to South Gyle Access Bridge

Below ground obstructions/voids

The Guaranteed Maximum Price does not include for any occurrence of archaeological findings. All obstructions and voids shall be addressed through a tie Change Order.

Duct Bank to City Chambers

The GMP does not include for duct construction from Princes Street to the City Chambers.

Design Assurance Statements

Infraco will carry out all necessary assurance statements, approvals and consents for the design, construction, testing and commissioning of the Edinburgh Tram Network as defined in this Revised Proposal (Phase 1a), with respect to the Safety Assurance Plan to enable tie to comply with ROGS and other key statutory requirements.

Ongoing tie Change Orders

Infraco and tie are in the process of negotiating numerous tie Change Orders, however it is unlikely and unnecessary that they will be finalised prior to submission of this Revised Proposal, in so far as the estimated amounts of these tie Change Orders have been incorporated in the GMP. Since Change Orders may have been issued after 30 June 2010 the GMP will require minor adjustment, as that the GMP only makes allowances for tie Change Orders issued prior to this date. However, in the instances where tie has issued Change Orders which contain qualifications, the qualifications remain valid and have been utilised in the development of the GMP.

Siemens' Materials and Equipment regarding the sections east of Haymarket

The Guaranteed Maximum Price includes the value of all materials and equipment which Siemens has already contracted for the scope east of Haymarket. The Guaranteed Maximum Price includes for delivery of all said materials and equipment, DDP (incoterms 2000) up to the defined projects warehouse in Edinburgh area. Arrangements have to be made by tie for taking over the project warehouse after completion of construction works for the initial phase or the transport of materials and equipment to other suitable locations.

An itemised and priced material schedule will be provided for the scope of work between Haymarket and Newhaven.

The Guaranteed Maximum Price is based on Infraco providing irrevocable vested ownership of these materials and equipment in favour of CEC, including transfer of title, risk and custody at a date which shall not exceed the Section C, Sectional Completion Date identified on the Programme, Revision 1- refer to activity ID 1000 of the Programme. For clarity, this is the latest date at which the last material or equipment should have been incorporated into the Works under the Programme, Revision 1.

The Guaranteed Maximum Price is predicated on the "Project Carlisle Change order allowing the immediate payment, per the itemised material schedule and within 60 days after physical delivery to the projects warehouse, of each and every such material and equipment for the scope of work between Haymarket and Newhaven.

The Guaranteed Maximum Price includes for warranty for all the above materials and equipment, for a warranty period expiring on 10 March 2013, i.e. two years after the Section C, Sectional Completion Date identified on the Programme, Revision 1.

Due to missing timeframes, cost for storage of the materials and equipment after providing irrevocable vested ownership as defined above is excluded from the Guaranteed Maximum Price. Siemens do not have long term arrangements beyond the Section C, Sectional Completion Date identified on the Programme; Revision 1 for its outsourced storage facilities in the Edinburgh area, the Guaranteed Maximum Price only includes cost for storage of the materials and equipment at Siemens' own or subcontracted onshore and/or offshore facilities, for the above, until that date.

Tram Supply:

The Guaranteed Maximum Price includes for all costs incurred by CAF in storing trams at their factory in Spain, and all other related costs (insurance, warranties etc) in accordance with Project Carlisle (See Appendix 1.3). For the sake of clarity, any reduction in the number of trams is not accepted by Infraco.

Designs Services (SDS)

Included in the Guaranteed Maximum Price is the cost for the preparation of all known works that the SDS Provider is currently aware of to complete the current scope. This includes the outstanding works relating to the original SDS design, design that has been subject to changes due to the alignment workshop process, changes requested by Infracore and changes driven by revised requirements from third party stakeholders and approvals bodies such as City of Edinburgh Council, tie, BAA, Forth Ports etc.

Also included in Appendix 1.4 CD, is a schedule of potential tie Changes that have been initiated, but for which, at the time of preparation of the Guaranteed Maximum Price, the scope was undefined. In these areas no instruction has been issued by tie. In most cases these tie Changes impact on a design that is complete, and compliant with the Employer's Requirements and the requirements of the Tram Design Manual, Third Party Agreements, CEC Standards and other core reference materials. These changes, if instructed, will result in changes to the GMP Drawings.

For the sake of clarity, these tie Changes have been excluded from the Guaranteed Maximum Price scope as it is recognised that it is entirely within the gift of tie to choose not to amend the current design presented and thereby mitigating cost and programme impact. Having reviewed the potential tie Changes for cost and programme savings we can see no added benefit in adopting the changes proposed in this schedule.

In preparing the Guaranteed Maximum Price, SDS has assumed that there will be no further changes required to the design, above and beyond those identified on the attached change schedules and as noted above. Given the exhaustive consultation approach that has been adopted with the relevant approvals bodies and the number of iterations of design that have been produced, comments received and subsequently incorporated, SDS believe the design to be robust and that all outstanding Technical and Prior Approvals could and should be granted by the relevant departments of the Approvals bodies without further change to the design. As such no allowance has been made for further design change in the production of the Guaranteed Maximum Price.

Specifically excluded from the Guaranteed Maximum Price are the following issues that at one point or another have been discussed, but not formalised or progressed by the Parties:

1. Stage E Landscape Drawings as per CEC Informative and Meeting held in September 2009;
2. South Gyle Access Bridge Detailed Design beyond Changes in S26 and W11 detailed in design as per DCR0133 feasibility report;
3. Tower Place Bridge design to reflect the removal of the ramp, concrete downstand, or revisions to the OLE, as per RDC154;
4. Forth Ports Section 1A fence alterations due to additional constraints in the Casino area;
5. Advanced Directional Signing for Constitution Street to address additional signs;
6. Landsay Road phone mast construction conflicts;
7. Mounting of sign plates on buildings and railings;

8. Roseburn Street Viaduct curtain walls in lieu of the current fencing proposal at each abutment;
9. Murrayfield Tramstop Layout Changes to bollards, fence, and turnstiles;
10. Elder Street Junction redesign;
11. Picardy Place Detailed Design as per DCR0173 and DCR0221
12. Pedestrian Guardrail Changes;
13. Gogar Interchange name change to Edinburgh Gateway;
14. Relocation of the combined sewer at Gogar interchange.

Completion Dates and Liquidated Damages

Liquidated Damages will apply at the Infraco Contract rates and as per the terms of the Infraco Contract. However, the Planned Sectional Completion Dates are as identified in GMP Programme in Appendix 5 and are defined in the Executive Summary.

Liquidated Damages associated with tram delivery / tram commissioning in the Tram Supply Novation Agreement, the Tram Supply Agreement, and the Infraco Contract shall not apply any more, since the necessary progress of the tram delivery and tram commissioning has been included in the revised dates for the Planned Sectional Completion. The agreed commissioning dates for the Trams should be linked in the completion dates.

Schedule Part 4 Pricing Assumptions

We believe that a joint review of the existing Specified Exclusions and Pricing Assumptions in Schedule part 4 is required to enable agreement to be reached on a substantially reduced list.

Specific Contract Clause Modifications

We believe there is positive merit to the proposed Clause changes identified in your letter, and also believe that a joint review of the specific Clause modifications would enable both Parties to find agreement for the betterment of the Project.

Maintenance

The maintenance GMP is based on the current design as detailed in the GMP Drawings. If this is later subject to a Change Order, including any change to the agreed split of responsibilities within Schedule Part 2, then this shall be valued in accordance with clause 80.6.

The GMP is based on the assumption that the total maintenance period does not exceed 10 years starting with the service commencement date for Section D (as described in Appendix 5.2).

In view of the Project Carlisle revisions, we do not believe that certain conditions remain appropriate and we therefore we would like to review and to discuss the incorporation of the following points with respect to the Maintenance Services:

1. Removal of the voluntary termination by tie clause (89), which leads to a 10 year maintenance contract period.
2. Removal of the cap applicable to indexation on Spare Parts and infrastructure mobilization amounts, currently capped at a maximum aggregate amount of 50,000GBP.
3. Indexation: shall be for the full scope of maintenance, including mobilisation and initial spares.
4. Introduction of a Benchmarking point (at 5 years) regardless of whether there is any change in applicable law.
5. Renegotiation of Liability caps, as defined in Schedule Part 1, in the Maintenance Cap.

Maintenance Pricing

To reflect the Maintenance programming modifications required by Project Carlisle the Maintenance Pricing requires adjustment. The following Table identifies the Maintenance Pricing categories and Revised Amounts. Tram Maintenance and Mobilisation is included in the price provided by CAF, see APPENDIX 1.3 -CAF - Guaranteed Maximum Price Breakdown.

Maintenance Pricing

Infraco	Value
Infraco Maintenance limited to scope as defined in Infraco "Project Carlisle" Proposal	£25,133,013.00
Infraco Maintenance Mobilisation	£1,782,292.00
Infraco Spare Parts	£1,013,090.00
Total Infraco	£27,928,395.00
CAF	Value
Tram Maintenance	TBA
Maintenance Mobilization	£2,275,806.00
Total CAF	TBA

TBA = To Be Adjusted by CAF/Tie when Km/year of operation is decided (it is presumed that the total amount will be below the minimum foreseen in Tram Maintenance Agreement table for price adjustment according to distance and will therefore require an agreement of the price per kilometre. If that is not the case, TMA prices will be applied)

APPENDIX 5

INFRACO PROJECT CARLISLE PROGRAMME

- 5.0 Narrative
- 5.1 GMP Programme
- 5.2 Sectional Completion Dates

5.0 Narrative

General

The start date (data date) of the programme is 03 September 2010. For work activities currently under construction their actual progress at 03 September 2010 is taken as the start point of the programme.

Our programme for the works recognises the allowed working hours stated in the Code of Construction Practice of 0700 to 1900 Monday to Friday and 0800 to 1300 on a Saturday. However a 40 hour effective working week has been used to calculate the duration of activities to take account of rest breaks, un-exceptional weather delays and travel between work sites. However construction work will be required outside the hours stated in the Code of Construction Practice for Rail Possessions, work on busy road junctions, works associated with piling at the A8 underpass, stringing catenary cables etc. Prior approval will be sought for such works in accordance with the tender documents and the programme assumes that such approval will be granted as necessary to maintain the Programme. Assumptions and factual statements upon which the Programme has been prepared are as set out in this document. General assumptions are as follows.

Version 59 of the SDS design programme has been used to establish milestone dates for the Issue for Construction drawings. We have assumed that there will be no amendments to the SDS design programme.

The programme is based on MUDFA having completed all works and all utilities being diverted that would conflict with INFRACO operations.

The scope of work considered is that for and set out in this Proposal. Therefore, this programme as set out in Appendix 5 was set up only with regard to the Project Carlisle Proposal and based upon the scope provided herein.

Section Completion Dates

Section 1A

The programme for the enabling works at Newhaven which includes Lindsay Road Retaining Wall and the lowering of Lindsay Road is an extract of the relevant sections of the proposed Programme Revision 3A. The construction sequence therefore relies upon the availability of the Forth Ports diversion road. This diversion route permits the simultaneous construction of Lindsay Road Retaining Wall W1A and the lowering of Lindsay Road whilst still maintaining traffic flows.

The GMP Programme assumes a

The Programme assumes that all necessary Utility diversions have been completed in this area prior to the Infraco Works commencing.

The GMP Programme assumes that all 3rd Party approvals / licences will be in place for these works to commence in accordance on 01 November 2010.

The programme for Tower Place Bridge enabling works is extracted from the Programme Revision 3A and progressed to 03 September 2010. The programme only accounts for the tie relocation of utilities from North to South. Any delay in relocating the utilities, or additional works undertaken by tie may impact the sectional completion date.

Section 2A

The GMP programme assumes the termination point for the works to be the east end of Haymarket Viaduct. No track work is envisaged beyond the eastern end of the reinforced concrete viaduct deck.

The GMP Programme assumes a commencement date of 20 September 2010 for the removal and replacement of soft ground

Section 5A

Detailed programmes are available for all structures. The GMP Programme shows summaries of these programmes.

The construction works in general are subject to Network Rail approval. An eight week (plus three week "cooling off period") has been assumed for all Network Rail form C approvals. A four week (plus three week "cooling off period") has been allowed for the approval of all Works Package plans. The programme generally shows the latest dates for these approvals.

The GMP Programme assumes tie will procure all necessary approvals and issue the necessary Change Orders to allow the commencement of demolition in Plots 96, 97, 101 & 102, before 20 September 2010

Section 5C

The completion of the track and M & E works at the depot is dependent on the completion of the depot access bridge superstructure. The Programme assumes that the works to the depot access bridge will be accelerated to 7 days a week working from the 11 October 2010.

Section 6A

No comments.

Section 7A

The Programme assumes that the settlement period for the Gogar Landfill Site will be limited to 3 months and removal of the surcharge can commence on 15 October 2010.

The Programme also assumes that BAA will grant a licence for works on their land to recommence on 24 September 2010.

Revisions to the W14 Retaining Wall, to the extent that an alternative piling solution will be fully developed, have been included in the Programme. In the event that the approval process, by third parties, causes a delay beyond the dates included in the Programme, Infracore reserves the right to claim an extension of time.

Immediate Action Items

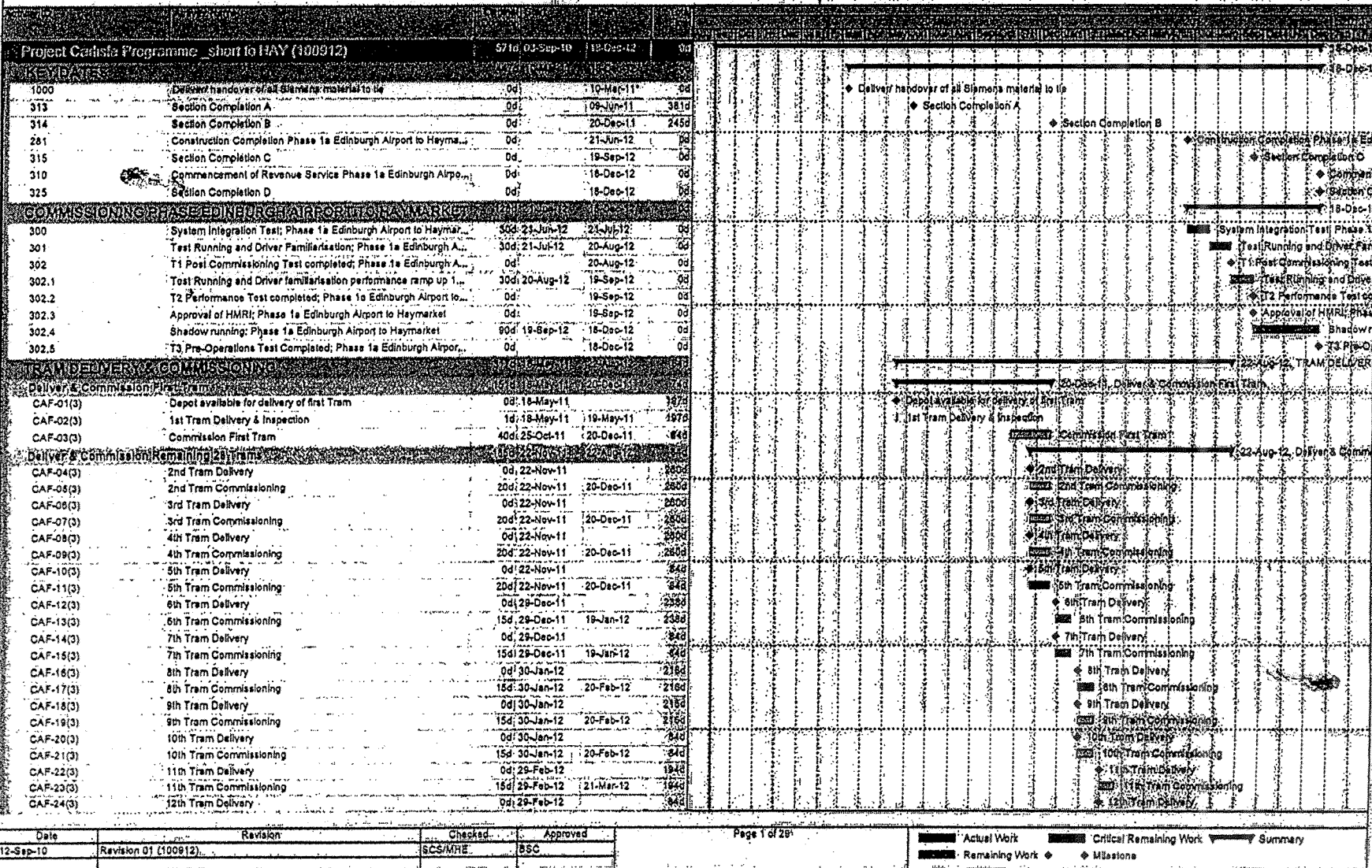
There are a number of time critical activities which require procurement of authorizations as well as procurement of long lead time materials. We propose to meet with tie to discuss this particular issue, as well as similar issues, within the next few days in an effort to find an agreeable solution to avoid unnecessary impacts to the Programme. The following list is not all inclusive:

1. Commencement of work at Lindsay Road in Section 1A by 01 November 2010
2. Removal and replacement of soft ground in Section 2A by 20 September 2010.
3. Permit to begin & Change Order issued for demolition in Section 5A by 20 September 2010.
4. Re commencement of work on BAA lands in Section 7A by 24 September 2010.
5. Finalisation of design to allow procurement of piling materials for Wall 14 C no later than 9 November 2010 to facilitate a 12 week fabrication and delivery requirement.

APPENDIX 5.1

INFRACO GMP PROGRAMME

Appendix 5.1 - GMP Programme:
Project Carlisle Programme - Airport to Haymarket
(Revision 01 100912)
Project Carlisle Programme - short to HAY (100912)
EDINBURGH TRAM NETWORK
Date 12-Sep-10
Pages 1 to 29



Date	Revision	Revision	Checked	Approved	Page 3 of 26	Legend
12-Sep-10	Revision 01 (100912)		SCS/MHE	BSC		<ul style="list-style-type: none"> Actual Work Remaining Work Critical Remaining Work Milestone Summary

Item ID	Description	Start Date	End Date	Value	Status
1A-24-W1A-120	RW Foundation	5p 04-Nov-10	10-Nov-10	3400	Completed
1A-24-W1A-130	RC Wall	7d 15-Nov-10	23-Nov-10	3400	Completed
1A-24-W1A-140	Coping	8d 25-Nov-10	06-Dec-10	3400	Completed
1A-24-W1A-150	Waterproofing	2d 15-Dec-10	16-Dec-10	3400	Completed
1A-24-W1A-190	Brickwork	3d 17-Dec-10	21-Dec-10	3400	Completed
1A-24-W1A-180	Drainage	2d 22-Dec-10	28-Dec-10	3400	Completed
1A-24-W1A-170	Stone drainage trench	3d 11-Jan-11	18-Jan-11	3400	Completed
1A-24-W1A-180	Backfill and compact (inc demog of exist RW)	11d 19-Jan-11	02-Feb-11	3400	Completed
1A-24-W1A-200	Vehicle Parapets	2d 03-Feb-11	04-Feb-11	3400	Completed
1A-24-SA-W1A-370	LINDSAY ROAD RW W1A - PHASE 1 (4 OF 21 UNITS) COMP...	0d	20-Feb-11	3400	Completed
1A-24-SA-W1D-130	RC Wall	7d 03-Sep-10	10-Sep-10	3270	Completed
1A-24-SA-W1D-140	Waterproofing	1d 14-Sep-10	14-Sep-10	3270	Completed
1A-24-SA-W1D-150	Drainage	1d 15-Sep-10	15-Sep-10	3270	Completed
1A-24-SA-W1D-150	Stone drainage trench	1d 16-Sep-10	16-Sep-10	3270	Completed
1A-24-SA-W1D-180	Brickwork	1d 18-Sep-10	18-Sep-10	3270	Completed
1A-24-SA-W1D-170	Backfill and compact	1d 17-Sep-10	17-Sep-10	3270	Completed
1A-24-SA-W1D-190	Vehicle Parapets + Crash Barrier	1d 20-Sep-10	20-Sep-10	3270	Completed
1A-24-SA-W1D-200	Kerbing	1d 20-Sep-10	20-Sep-10	3270	Completed
1A-24-SA-W1D-210	Footway and Road Surfacing	10d 21-Sep-10	04-Oct-10	3270	Completed
1A-24-SA-W1D-220	LINDSAY ROAD RW W1D COMPLETE	0d	04-Oct-10	3270	Completed
1A-24-SA-W1C-140	Coping	5d 03-Sep-10	10-Sep-10	3270	Completed
1A-24-SA-W1C-150	Waterproofing	1d 13-Sep-10	13-Sep-10	3270	Completed
1A-24-SA-W1C-160	Drainage	1d 14-Sep-10	14-Sep-10	3270	Completed
1A-24-SA-W1C-170	Stone drainage trench	3d 15-Sep-10	17-Sep-10	3270	Completed
1A-24-SA-W1C-190	Brickwork	3d 15-Sep-10	17-Sep-10	3270	Completed
1A-24-SA-W1C-180	Backfill and compact	1d 20-Sep-10	20-Sep-10	3270	Completed
1A-24-SA-W1C-200	Vehicle Parapets + Crash Barrier	1d 21-Sep-10	21-Sep-10	3270	Completed
1A-24-SA-W1C-210	Kerbing	1d 21-Sep-10	21-Sep-10	3270	Completed
1A-24-SA-W1C-220	Footway and Road Surfacing	10d 22-Sep-10	06-Oct-10	3270	Completed
1A-24-SA-W1C-230	LINDSAY ROAD RW W1C COMPLETE	0d	06-Oct-10	3270	Completed
1A-24-TTM-05B-1000	TTM - PHASE 5B - Lindsay Road EB closed	10d 01-Nov-10	11-Nov-10	1930	Completed
1A-24-TTM-05B-01	Complete TTM Works	0d 01-Nov-10	01-Nov-10	1930	Completed
1A-24-TTM-05B-1010	TTM PHASE 5B COMPLETE	0d	11-Nov-10	1930	Completed
1A-24-SB-1000	Establish temporary traffic management	1d 03-Nov-10	03-Nov-10	1930	Completed
1A-24-SB-1010	Site clearance	3d 05-Nov-10	08-Nov-10	1930	Completed
1A-24-SB-1020	Investigate services / confirm positions / install	1d 09-Nov-10	09-Nov-10	1930	Completed

Date	Revision	Checked	Approved
12-Sep-10	Revision 01 (100912)	GCS/MHE	BSC

Item ID	Description	Start	End	Actual	Remaining	Milestone
1A-24-5B-1030	COMMENCE ROAD WORKS (LINDSAY ROAD WESTBOUND)	08:10-Nov-10	19:30			
1A-24-5B-1040	ROAD WORKS COMPLETE (LINDSAY ROAD)	08:04-Apr-11	19:30			
1A-24-5B-1050	Remove existing footway	09:10-Nov-10	17-Nov-10	19:30		
1A-24-5B-1060	Plane Main Carriageway & Footway	05:17-Nov-10	24-Nov-10	19:30		
1A-24-5B-1070	Plane/break/flower / excavate to Formation (Lindsay Road)	49:24-Nov-10	18-Feb-11	19:30		
1A-24-5B-1080	Capping layer (800mm)	49:25-Nov-10	17-Feb-11	19:30		
1A-24-5B-1090	Drainage and Outfalls	49:26-Nov-10	18-Feb-11	19:30		
1A-24-5B-1100	Ducts and Chambers	49:26-Nov-10	18-Feb-11	19:30		
1A-24-5B-1110	Kerbing	10:15-Feb-11	01-Mar-11	19:30		
1A-24-5B-1120	Footpath Works	27:18-Feb-11	29-Mar-11	19:30		
1A-24-5B-1130	220mm Sub-base	1:01-Mar-11	02-Mar-11	21:00		
1A-24-5B-1140	225mm Base	1:02-Mar-11	03-Mar-11	21:00		
1A-24-5B-1150	80mm Binder Course	1:03-Mar-11	04-Mar-11	21:00		
1A-24-5B-1160	35mm Surface Course - Main Carriageway and Boundary	1:04-Mar-11	07-Mar-11	21:00		
1A-24-5B-1170	Road Signs and Markings	1:07-Mar-11	08-Mar-11	21:00		
1A-24-5B-1180	Landscaping	9:27-Mar-11	01-Apr-11	19:30		
1A-24-5B-1190	Remove temporary traffic management	13:04-Apr-11	04-Apr-11	19:30		
COMMISSIONING AND TESTING						
1A-24-5B-TEST-100	Handover / Acceptance of Road works and Trackwork	0:04-Apr-11	11-Apr-11	19:30		
1A-24-5B-TEST-110	Start remaining E&M works along track	0:11-Apr-11	29:00			
TTM PHASE 5A (LINDSAY ROAD EAST BOUND)						
1A-24-TTM-05A-1000	TTM PHASE 5A - Lindsay Road W/closed	03:11-Apr-11	19:30			
1A-24-TTM-05A-1010	TTM PHASE 5A COMPLETE	0:05-Sep-11	19:30			
TEMPORARY AND PRELIMINARY WORKS						
1A-24-5A-1000	Establish temporary traffic management	1:13-Apr-11	12-Apr-11	19:30		
1A-24-5A-1010	Site clearance	10:12-Apr-11	27-Apr-11	19:30		
1A-24-5A-1020	Investigate services / outfall positions / inlet/outlet positions / etc...	1:27-Apr-11	28-Apr-11	19:30		
1A-24-5A-W1B-100	Installation, site installation and temporary fencing	1:11-Apr-11	12-Apr-11	20:20		
1A-24-5A-W1B-110	Demolition	10:12-Apr-11	27-Apr-11	20:20		
1A-24-5A-W1B-120	Excavation	2:24-Apr-11	28-Apr-11	20:20		
1A-24-5A-W1B-130	RW Foundation	9:29-Apr-11	13-May-11	20:20		
1A-24-5A-W1B-140	RC Wall	11:13-May-11	31-May-11	20:20		
1A-24-5A-W1B-150	Waterproofing	2:31-May-11	02-Jun-11	20:20		
1A-24-5A-W1B-160	Drainage	5:02-Jun-11	09-Jun-11	20:20		
1A-24-5A-W1B-170	Stone drainage trench	2:09-Jun-11	13-Jun-11	20:20		
1A-24-5A-W1B-180	Brickwork	2:09-Jun-11	13-Jun-11	20:20		
1A-24-5A-W1B-190	Backfill and compact	1:13-Jun-11	14-Jun-11	20:20		
1A-24-5A-W1B-200	Vehicle Parapets	2:14-Jun-11	16-Jun-11	21:00		
1A-24-5A-W1B-210	Kerbing	2:14-Jun-11	18-Jun-11	20:20		
1A-24-5A-W1B-220	Footway and Road Surfacing	10:16-Jun-11	30-Jun-11	20:20		

Date	Revision	Checked	Approved	Page # of #	Summary
12-Sep-10	Revision 01 (100912)	SCS/MHE	BSC		Summary

Item ID	Description	Start	End	Duration	Notes
1A-24-5A-W1B-230	LINDSAY ROAD RW W/RE COMPLETE	06	30-Aug-11	242d	
1A-24-5A-1030	COMMENCE ROAD WORKS (LINDSAY ROAD)	06	28-Apr-11	193d	
1A-24-5A-1040	ROAD WORKS COMPLETE (LINDSAY ROAD-EASTBOUND)	06	30-Aug-11	193d	
1A-24-5A-1050	Remove existing footway	11d	28-Apr-11	16-May-11	193d
1A-24-5A-1060	Plane Main Carriageway & Footway	3d	16-May-11	20-May-11	193d
1A-24-5A-1070	Plane/break/lower / excavate to Formation (Lindsay Road)	38d	20-May-11	14-Jul-11	193d
1A-24-5A-1080	Earthworks New Link Road	15d	20-May-11	13-Jun-11	216d
1A-24-5A-1090	Capping layer (600mm)	38d	23-May-11	15-Jul-11	193d
1A-24-5A-1100	Drainage and Outfalls	38d	24-May-11	18-Jul-11	194d
1A-24-5A-1120	Ducts and Chambers	38d	24-May-11	18-Jul-11	194d
1A-24-5A-1110	Manholes & Catchpits (3nos)	9d	24-May-11	07-Jun-11	223d
1A-24-5A-1130	Kerbing	9d	13-Jul-11	26-Jul-11	193d
1A-24-5A-1140	Footpath Works	29d	18-Jul-11	29-Aug-11	194d
1A-24-5A-1150	220mm Sub-base	1d	26-Jul-11	27-Aug-11	211d
1A-24-5A-1160	225mm Base	1d	27-Jul-11	28-Jul-11	211d
1A-24-5A-1170	60mm Binder Course	1d	28-Jul-11	29-Jul-11	211d
1A-24-5A-1180	35mm Surface Course - Main Carriageway and Boundary	1d	28-Jul-11	02-Aug-11	211d
1A-24-5A-1190	Parapets, Guard rails	6d	26-Jul-11	02-Aug-11	193d
1A-24-5A-1210	Installation of traffic light control	0d	02-Aug-11	02-Aug-11	212d
1A-24-5A-1220	Road Signs and Markings	1d	02-Aug-11	03-Aug-11	211d
1A-24-5A-1200	Landscaping	15d	08-Aug-11	29-Aug-11	193d
1A-24-5A-1230	Remove temporary traffic management	1d	29-Aug-11	30-Aug-11	193d
1A-24-5A-TEST-100	Handover / Acceptance of Roadworks and Trackworks	6d	30-Aug-11	05-Sep-11	193d
1A-24-5A-TEST-110	Start remaining EAM works along track	6d	05-Sep-11	10-Sep-11	193d
1A-24-TTM-07-1000	TTM PHASE 7 - Road closed (CR.200-450)	06	03-Sep-10	04-Sep-10	47d
1A-24-TTM-07-1020	Old Ponds Road Diversion Available / Ponds Licence	06	03-Sep-10	05-Sep-10	47d
1A-24-TTM-07-1010	TTM PHASE 7 COMPLETE	06	04-Mar-11	04-Mar-11	47d
1A-24-B-7-1000	Establish temporary traffic management	1d	03-Sep-10	04-Sep-10	47d
1A-24-B-7-1030	Site clearance	1d	03-Sep-10	04-Sep-10	47d
1A-24-B-7-1020	Investigate services / outfall positions / inlet/outlet positions	3d	07-Sep-10	09-Sep-10	47d
1A-24-7-W1A-110	Excavation	1d	08-Sep-10	09-Sep-10	47d
1A-24-7-W1A-120	RW Foundation	15d	15-Sep-10	03-Oct-10	47d
1A-24-7-W1A-130	RC Wall	25d	30-Sep-10	04-Nov-10	47d
1A-24-7-W1A-140	Coping	6d	05-Nov-10	11-Nov-10	47d
1A-24-7-W1A-150	Waterproofing	9d	12-Nov-10	21-Nov-10	47d
1A-24-7-W1A-160	Drainage	6d	19-Nov-10	02-Dec-10	47d

Date	Revision	Checked	Approved	Page	Actual Work	Critical Remaining Work	Summary
12-Sep-10	Revision 01 (100912)	SCS/AHE	BSC	Page 8 of 21	Remaining Work	Milestone	
1A-24-7-WIA-190	Brickwork	13d 25-Nov-10	1b-Dec-10	4594			
1A-24-7-WIA-170	Stone drainage trench	13d 25-Nov-10	1b-Dec-10	4476			
1A-24-7-WIA-180	Backfill and compact (incl. demolition of exist. RW)	48d 06-Dec-10	22-Feb-11	4476			
1A-24-7-WIA-200	Vehicle Parapets	8d 22-Feb-11	04-Mar-11	4476			
1A-24-7-WIA-210	LINDSAY ROAD RW WTA COMPLETE	0d	04-Mar-11	4476			
Ocean Terminal to Port of Leith							
Tower Place Bridge (S17)							
1A-1-S17-1000	TOWER PLACE BRIDGE (S17) STRUCTURE COMPLETE	437d 03-Sep-10	20-Jun-11	4340			
1A-1-S17-1020	Precast ramp units	80d 03-Sep-10	25-Nov-10	4294			
1A-1-S17-1030	Ducting	30d 20-Sep-10	29-Oct-10	3134			
1A-1-S17-1140	Demolition of existing abutment structure	2d 03-Sep-10	05-Sep-10	3218			
1A-1-S17-1200	Construct formwork to ballast walls	2d 07-Sep-10	08-Sep-10	5610			
1A-1-S17-1210	Pour concrete to ballast walls	1d 09-Sep-10	09-Sep-10	5610			
1A-1-S17-1350	Cut Back existing topping beam and sheet piling	1d 07-Sep-10	07-Sep-10	5600			
1A-1-S17-1360	Demolition of existing abutment structure	3d 08-Sep-10	10-Sep-10	5600			
1A-1-S17-1410	Construct formwork to ballast walls	2d 06-Sep-10	08-Sep-10	5600			
1A-1-S17-1420	Pour concrete to ballast walls	1d 10-Sep-10	10-Sep-10	5600			
Demolition of existing deck section							
1A-1-S17-1480	Remove existing deck section by robotition	10d 03-Sep-10	15-Sep-10	3134			
South Footpath							
1A-1-S17-1630	Install service ducting to south footway	2d 01-Nov-10	02-Nov-10	3134			
1A-1-S17-1640	Kerbing	2d 01-Nov-10	02-Nov-10	3134			
1A-1-S17-1650	Install in-fill concrete	2d 03-Nov-10	04-Nov-10	3134			
1A-1-S17-1660	Divert services back to South footpath (by others)	1d 03-Nov-10	05-Nov-10	3134			
Concrete work on deck							
1A-1-S17-1550	Install formwork to deck slab extension	20d 17-Sep-10	14-Oct-10	3134			
1A-1-S17-1560	Install reinforcement to deck slab	16d 24-Sep-10	20-Oct-10	3134			
1A-1-S17-1570	Pour concrete to deck slab	18d 01-Oct-10	22-Oct-10	3134			
1A-1-S17-1580	Install formwork to deck cope	16d 02-Oct-10	20-Oct-10	3134			
1A-1-S17-1590	Pour concrete to deck cope	15d 03-Oct-10	27-Oct-10	3134			
1A-1-S17-1610	Strip formwork to underside of deck section (allowing for require...	20d 21-Oct-10	17-Nov-10	3134			
1A-1-S17-1600	Install pedestrian/cycleway barrier to cope	2d 28-Oct-10	29-Oct-10	3134			
1A-1-S17-1620	Waterproofing to deck concrete	10d 03-Sep-10	04-Sep-10	3134			
Paintwork							
1A-1-S17-1820	Paintwork	10d 03-Sep-10	04-Sep-10	3134			
North Footpath							
1A-1-S17-1750	Install service ducting to North verge	10d 28-Jan-11	08-Feb-11	3134			
1A-1-S17-1800	Install in-fill concrete	1d 09-Feb-11	09-Feb-11	3134			
1A-1-S17-1810	Install ducting suspended from underside of soffit	5d 10-Feb-11	16-Feb-11	3134			
Move Pontoon (North side of bridge)							
1A-1-S17-1870	Move pontoons to North side of Bridge	1d 28-Oct-10	28-Oct-10	3134			
1A-1-S17-1860	Cut and remove existing parapet cope by diamond wire sawing	7d 28-Oct-10	05-Nov-10	3134			
1A-1-S17-1890	Remove existing deck section by robotition	10d 03-Nov-10	12-Nov-10	3134			

Code	Description	Start	End	Value
1A-1-S17-1700	Install formwork to deck slab extension	25d 22-Nov-10	10d Jan-11	3150
1A-1-S17-1710	Install reinforcement to deck slab	25d 06-Dec-10	14d Jan-11	3150
1A-1-S17-1720	Pour concrete to deck slab	18d 13-Dec-10	17d Jan-11	3150
1A-1-S17-1730	Install formwork for deck cope	18d 18-Dec-10	18d Jan-11	3500
1A-1-S17-1740	Pour concrete to deck cope	14d 17-Dec-10	19d Jan-11	2150
1A-1-S17-1770	Strip formwork to underside of deck section	25d 10-Jan-11	09-Feb-11	3150
1A-1-S17-1750	Strip cope formwork	2d 20-Jan-11	12d Jan-11	3150
1A-1-S17-1780	Waterproofing to deck concrete	2d 24-Jan-11	25d Jan-11	3150
1A-1-S17-1790	Install pedestrian/cycleway barrier to cope	2d 26-Jan-11	27d Jan-11	3210
WEST RAMP COMPLETE				
1A-1-S17-1830	Excavate area for south West ramp	3d 30-Sep-10	04d Oct-10	4500
1A-1-S17-1840	Blinding for precast units	2d 05-Oct-10	06d Oct-10	4500
1A-1-S17-1850	Place precast ramp units	2d 28-Nov-10	29d Nov-10	4200
1A-1-S17-1860	Install ramp sections	12d 01-Dec-10	16d Dec-10	4200
1A-1-S17-1870	Bitumen paint to concrete	2d 17-Dec-10	20d Dec-10	4200
1A-1-S17-1880	Backfill paving area	3d 21-Dec-10	23d Dec-10	4200
1A-1-S17-1890	Install paving to footway	4d 24-Dec-10	12d Jan-11	4200
1A-1-S17-1900	Install pedestrian/cycleway barrier	2d 13-Jan-11	14d Jan-11	4200
1A-1-S17-1910	WEST RAMP COMPLETE	0d	14d Jan-11	4810
1A-1-S17-1920	Excavate area for South East ramp	3d 17-Jan-11	19d Jan-11	4200
1A-1-S17-1930	Excavate area for retaining wall	2d 20-Jan-11	21d Jan-11	4200
1A-1-S17-1940	Construct retaining wall	10d 24-Jan-11	04-Feb-11	4200
1A-1-S17-1950	Blinding for units	2d 07-Feb-11	09d Feb-11	4200
1A-1-S17-1960	Place precast ramp units	2d 09-Feb-11	10d Feb-11	4200
1A-1-S17-1970	Bitumen paint to concrete	2d 11-Feb-11	14d Feb-11	4200
1A-1-S17-1980	Install triefl kerbs	3d 15-Feb-11	17d Feb-11	4200
1A-1-S17-1990	Install Aco channel	2d 18-Feb-11	21d Feb-11	4200
1A-1-S17-2000	Install deterrent paving	2d 22-Feb-11	23d Feb-11	4200
1A-1-S17-2010	Install pedestrian/cycleway barrier	2d 24-Feb-11	25d Feb-11	4200
1A-1-S17-2020	Install paving to footway	2d 28-Feb-11	01d Mar-11	4200
1A-1-S17-2030	EAST RAMP COMPLETE	0d	01d Mar-11	4400
1A-1-S17-2040	Works TBC	20d 02-Mar-11	20d Mar-11	4200
1A-1-S17-2050	PUMPING HOUSE RW COMPLETE	0d	28d Mar-11	4200
1A-1-1020	Plan/excavate existing road surface (Tower Bridge)	4d 17-Feb-11	22d Feb-11	3150
1A-1-1030	Remove existing deck waterproofing	3d 23-Feb-11	26d Feb-11	3150
1A-1-1040	New waterproofing and sand carpet	3d 28-Feb-11	02d Mar-11	3150
1A-1-1060	Surfacing to carriageway	5d 03-Mar-11	09d Mar-11	3150
1A-1-1070	Road markings	4d 10-Mar-11	15d Mar-11	3150

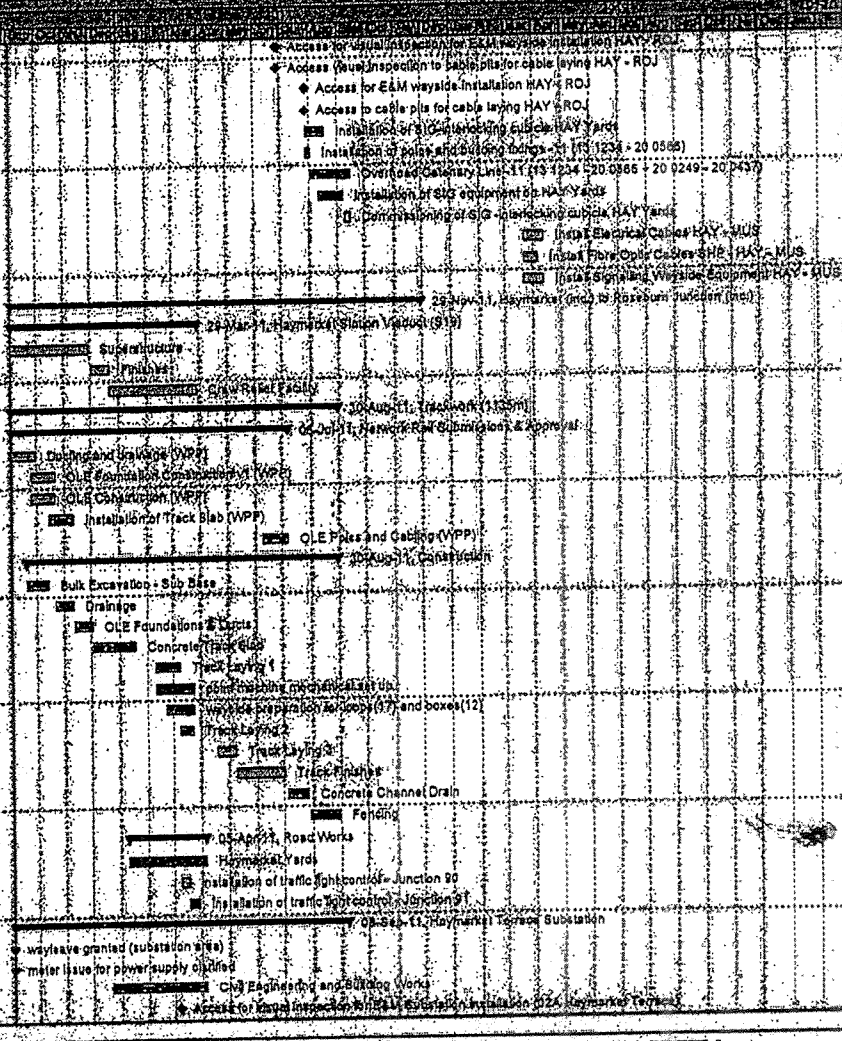
Code	Description	Start	End	Value
1A-1-S17-1700	Install formwork to deck slab extension	25d 22-Nov-10	10d Jan-11	3150
1A-1-S17-1710	Install reinforcement to deck slab	25d 06-Dec-10	14d Jan-11	3150
1A-1-S17-1720	Pour concrete to deck slab	18d 13-Dec-10	17d Jan-11	3150
1A-1-S17-1730	Install formwork for deck cope	18d 18-Dec-10	18d Jan-11	3500
1A-1-S17-1740	Pour concrete to deck cope	14d 17-Dec-10	19d Jan-11	2150
1A-1-S17-1770	Strip formwork to underside of deck section	25d 10-Jan-11	09-Feb-11	3150
1A-1-S17-1750	Strip cope formwork	2d 20-Jan-11	12d Jan-11	3150
1A-1-S17-1780	Waterproofing to deck concrete	2d 24-Jan-11	25d Jan-11	3150
1A-1-S17-1790	Install pedestrian/cycleway barrier to cope	2d 26-Jan-11	27d Jan-11	3210
WEST RAMP COMPLETE				
1A-1-S17-1830	Excavate area for south West ramp	3d 30-Sep-10	04d Oct-10	4500
1A-1-S17-1840	Blinding for precast units	2d 05-Oct-10	06d Oct-10	4500
1A-1-S17-1850	Place precast ramp units	2d 28-Nov-10	29d Nov-10	4200
1A-1-S17-1860	Install ramp sections	12d 01-Dec-10	16d Dec-10	4200
1A-1-S17-1870	Bitumen paint to concrete	2d 17-Dec-10	20d Dec-10	4200
1A-1-S17-1880	Backfill paving area	3d 21-Dec-10	23d Dec-10	4200
1A-1-S17-1890	Install paving to footway	4d 24-Dec-10	12d Jan-11	4200
1A-1-S17-1900	Install pedestrian/cycleway barrier	2d 13-Jan-11	14d Jan-11	4200
1A-1-S17-1910	WEST RAMP COMPLETE	0d	14d Jan-11	4810
1A-1-S17-1920	Excavate area for South East ramp	3d 17-Jan-11	19d Jan-11	4200
1A-1-S17-1930	Excavate area for retaining wall	2d 20-Jan-11	21d Jan-11	4200
1A-1-S17-1940	Construct retaining wall	10d 24-Jan-11	04-Feb-11	4200
1A-1-S17-1950	Blinding for units	2d 07-Feb-11	09d Feb-11	4200
1A-1-S17-1960	Place precast ramp units	2d 09-Feb-11	10d Feb-11	4200
1A-1-S17-1970	Bitumen paint to concrete	2d 11-Feb-11	14d Feb-11	4200
1A-1-S17-1980	Install triefl kerbs	3d 15-Feb-11	17d Feb-11	4200
1A-1-S17-1990	Install Aco channel	2d 18-Feb-11	21d Feb-11	4200
1A-1-S17-2000	Install deterrent paving	2d 22-Feb-11	23d Feb-11	4200
1A-1-S17-2010	Install pedestrian/cycleway barrier	2d 24-Feb-11	25d Feb-11	4200
1A-1-S17-2020	Install paving to footway	2d 28-Feb-11	01d Mar-11	4200
1A-1-S17-2030	EAST RAMP COMPLETE	0d	01d Mar-11	4400
1A-1-S17-2040	Works TBC	20d 02-Mar-11	20d Mar-11	4200
1A-1-S17-2050	PUMPING HOUSE RW COMPLETE	0d	28d Mar-11	4200
1A-1-1020	Plan/excavate existing road surface (Tower Bridge)	4d 17-Feb-11	22d Feb-11	3150
1A-1-1030	Remove existing deck waterproofing	3d 23-Feb-11	26d Feb-11	3150
1A-1-1040	New waterproofing and sand carpet	3d 28-Feb-11	02d Mar-11	3150
1A-1-1060	Surfacing to carriageway	5d 03-Mar-11	09d Mar-11	3150
1A-1-1070	Road markings	4d 10-Mar-11	15d Mar-11	3150

SECTION 2 HAYMARKET BORRDOIR
1A-1-1020 to 1A-1-1070
E & M Installation
03d 20-Mar-11 11d Apr-11

SECTION 2 HAYMARKET BORRDOIR
1A-1-1020 to 1A-1-1070
E & M Installation
11d Apr-11 22d May-11

Date	Revision	Checked	Approved	Page	Legend
12-Sep-10	Revision 01 (100912)	SCS/MHE	BSC	Page 2 of 29	■ Actual Work ■ Critical Remaining Work ▬ Summary ■ Remaining Work ◆ Milestone

Item ID	Description	Start Date	End Date	Value
2A-13-OHLE-40	Access for visual inspection for E&M wayside installation HAY - ROJ	04-28-Jun-11	04-28-Jun-11	4026
2A-13-ELEC-40	Access visual inspection to cable pits for cable laying HAY - ROJ	04-28-Jun-11	04-28-Jun-11	4026
2A-13-OHLE-41	Access for E&M wayside installation HAY - ROJ	04-28-Jul-11	04-28-Jul-11	239d
2A-13-ELEC-41	Access to cable pits for cable laying HAY - ROJ	04-28-Jul-11	04-28-Jul-11	221d
2A-13-SIGN-40	Installation of SIG-interlocking cubicle HAY Yards	15d-28-Jul-11	17-Aug-11	234d
2A-13/14-OHLE-50	Installation of poles and building footings -11 (13 1234 - 20 0566)	4d-28-Jul-11	02-Aug-11	204d
2A-13/14-OHLE-60	Overhead Catenary Line -11 (13 1234 - 20 0566 + 20 0249 - 20...	11d-03-Aug-11	14-Sep-11	204d
2A-13-SIGN-90	Installation of SIG equipment on HAY Yards	20d-11-Aug-11	07-Sep-11	234d
2A-13-SIGN-80	Commissioning of SIG -interlocking cubicle HAY Yards	5d-08-Sep-11	14-Sep-11	234d
2A-12/13-ELEC-60	Install Electrical Cables HAY - MUS	14d-21-Mar-12	11-Apr-12	49d
2A-12/13/14-TELC-60	Install Fibre Optic Cables SHP - HAY - MUS	11d-21-Mar-12	05-Apr-12	52d
2A-12/13-SIGNV-60	Install Signalling Wayside Equipment HAY - MUS	14d-21-Mar-12	11-Apr-12	49d
Haymarket (inc) to Roseburn Junction (inc)				
Haymarket Station (inc) (S19)				
2A-13-S19-80	Superstructure	02d-03-Sep-10	29-Nov-10	183d
2A-13-S19-80	Finishes	15d-01-Dec-10	21-Dec-10	163d
2A-13-S19-80(3)	Crew Relief Facility	60d-22-Dec-10	29-Mar-11	234d
Trackwork (1135m)				
Haymarket to Roseburn Junction (1135m)				
2A-13-TRCK-12	Ducting and drainage (WPP)	20d-03-Sep-10	30-Sep-10	166d
2A-13-TRCK-10	OLE Foundation Construction v1 (WPP)	20d-24-Sep-10	21-Oct-10	166d
2A-13-TRCK-11	OLE Construction (WPP)	20d-24-Sep-10	21-Oct-10	166d
2A-13-TRCK-13	Installation of Track Slab (WPP)	20d-14-Oct-10	10-Nov-10	166d
2A-13-TRCK-14	OLE Poles and Cabling (WPP)	20d-08-Jun-11	08-Jul-11	205d
Construction				
2A-13-TRCK-30	Bulk Excavation - Sub Base	15d-20-Sep-10	13-Oct-10	172d
2A-13-TRCK-60	Drainage	15d-22-Oct-10	11-Nov-10	166d
2A-13-TRCK-50(3)	OLE Foundations & Ducts	14d-12-Nov-10	02-Dec-10	166d
2A-13-TRCK-40	Concrete Track Slab	23d-03-Dec-10	18-Jan-11	166d
2A-13A-TRCK-70	Track Laying 1	19d-10-Feb-11	08-Mar-11	166d
2A-13-SIGN-70	point machine mechanical set up	30d-10-Feb-11	23-Mar-11	439d
2A-13-SIGN-60	wayside preparation for loops(17) and boxes(12)	23d-21-Feb-11	23-Mar-11	449d
2A-13B-TRCK-70	Track Laying 2	10d-09-Mar-11	22-Mar-11	166d
2A-13C-TRCK-70	Track Laying 3	14d-18-Apr-11	09-May-11	166d
2A-13-TRCK-6B	Track Finishes	39d-10-May-11	01-Jul-11	166d
2A-13-TRCK-80(3)	Concrete Channel Drain	18d-04-Jul-11	27-Jul-11	166d
2A-13-TRCK-81	Fencing	23d-28-Jul-11	30-Aug-11	166d
Road Works				
2A-13C-ROAD-80(3)	Haymarket Yards	62d-10-Jan-11	05-Apr-11	317d
2A-13B-JNCS-60	Installation of traffic light control - Junction 90	7d-05-Mar-11	17-Mar-11	320d
2A-13B-JNCS-70	Installation of traffic light control - Junction 91	7d-18-Mar-11	25-Mar-11	320d
Haymarket Roseburn Substation				
2A-13-SUBS-110	Wayleave granted (substation site)	0d	03-Sep-10	285d
2A-13-SUBS-120	meter issue for power supply clarified	0d	03-Sep-10	285d
2A-13-SUBS-90	Civil Engineering and Building Works	65d-22-Dec-10	05-Apr-11	131d
2A-13-SUBS-30	Access for visual inspection for E&M Substation installation (02...	0d-07-Mar-11	07-Mar-11	166d



Date	Revision	Checked	Approved
12-Sep-10	Revision 01 (100912)	BCS/MHE	BBC

Item ID	Description	Start Date	End Date	Duration	Notes
2A-13-SUBS-100	Cable duct for Power Infeed	28/07-Mar-11	14-Mar-11	161d	
2A-13-SUBS-130	Installation HV cable	30d/14-Mar-11	26-Apr-11	191d	
2A-13-SUBS-31	Access for E&M Substation Installation (02A Haymarket Terrace)	0d/06-Apr-11		196d	
2A-13-SUBS-40	Power Infeed from Public Net available Inc HV cable	0d/25-Apr-11		191d	
2A-13-SUBS-45	Install HV Power Supply and Equipment (SP)	25d/26-Apr-11	26-May-11	191d	
2A-13-SUBS-50	Install LV Power Supply and LV Power Equipment	18d/25-May-11	16-Jun-11	191d	
2A-13-SUBS-55	Energisation Scottish Power	0d/09-Jun-11		197d	
2A-13-SUBS-70	Install Telecom and SCADA	15d/18-Jun-11	07-Jul-11	191d	
2A-13-SUBS-60	Installation of TPS Equipment	30d/07-Jul-11	19-Aug-11	197d	
2A-13-SUBS-80	Testing and Commissioning	12d/12-Aug-11	08-Sep-11	197d	
Haymarket Station Tram Stop					
2A-13-TRMS-20	Wayleave issued	3d/04-Sep-10		216d	
2A-13-TRMS-30	Civil Engineering and Building Works	85d/01-Oct-10	15-Mar-11	137d	
2A-13-TRMS-30	Access for visual inspection for E&M Tram Stop Installation (02A Haymarket Station)	0d/24-Jan-11		199d	
2A-13-TRMS-40	Deliver and Install Shelter	10d/09-Feb-11	22-Feb-11	133d	
2A-13-TRMS-31	Access for E&M Tram Stop Installation (02A Haymarket Station)	0d/23-Feb-11		199d	
2A-13-TRMS-45	Deliver and Install cubicle	10d/23-Feb-11	08-Mar-11	133d	
2A-13-TRMS-50	Install LV Power Supply and LV Power Equipment	25d/09-Mar-11	12-Apr-11	133d	
2A-13-TRMS-70	Install Telecom Equipment	20d/13-Apr-11	12-May-11	133d	
2A-13-TRMS-60	Install Station Control Equipment - AFC Equipment	25d/13-Apr-11	19-May-11	133d	
2A-13-TRMS-80	Package Test, Tramstop	5d/20-May-11	26-May-11	133d	
Landscaping					
2A-13-LAND-100(3)	Landscaping to Section 2A	85d/31-Aug-11	27-Nov-11	129d	
SECTION 05 ROSEBURN JUNCTION TO GOSFORTH					
MUDPA Works (installs) to INFRACO					
5A-BT-D-02(3)	BT Russell Road Ret Wall	80d/16-Mar-11	27-Apr-11	43d	
5A-BT-D-03(3)	BT Russell Road Ret Wall	30d/16-Mar-11	27-Apr-11	43d	
5A-SGN-D-02(3)	Gas Russell Road Ret Wall	30d/16-Mar-11	27-Apr-11	43d	
5A-SF-D-01(3)	Electric Russell Road Ret Wall	30d/16-Mar-11	27-Apr-11	43d	
5A-BT-D-01(3)	BT Russell Road Ret Wall	30d/16-Mar-11	27-Apr-11	43d	
5A-SF-D-02(3)	Electric Balgreen Road	20d/22-Jun-11	19-Jul-11	391d	
E&M Installations					
5A-11-OHLE-30	Access for visual inspection for E&M wayside installation MUS - BAL	0d/03-Feb-12		222d	
5A-11-ELEC-30	Access for visual inspection to cable pits for cable laying MUS - BAL	0d/03-Feb-12		222d	
5A-12-ELEC-30	Access for visual inspection to cable pits for cable laying ROJ - MUS	0d/20-Feb-12		211d	
5A-12-OHLE-30	Access for visual inspection for E&M wayside installation ROJ - MUS	0d/20-Feb-12		211d	
5A-11-ELEC-40	Install Electrical Cables MUS - BAL	11d/08-Mar-12	20-Mar-12	63d	
5A-11-SGNW-40	Install Signalling Wayside Equipment MUS - BAL	11d/08-Mar-12	20-Mar-12	63d	
5A-10/11-OHLE-50	Installation of poles and building fixings -13 (51 0770 - 62 0754)	13d/08-Mar-12	22-Mar-12	15d	
5A-11-OHLE-31	Access for E&M wayside installation MUS - BAL	0d/08-Mar-12		131d	
5A-11-ELEC-31	Access to cable pits for cable laying MUS - BAL	0d/08-Mar-12		62d	
5A-11/12/13-TELC-40	Install Fibre Optic Cables HAY - MUS - BAL	12d/21-Mar-12	09-Apr-12	91d	
5A-11/12/13-OHLE-50	Installation of poles and building fixings -12 (20 0457 - 51 0966)	13d/21-Mar-12	10-Apr-12	0d	
5A-12-ELEC-31	Access to cable pits for cable laying ROJ - MUS	0d/21-Mar-12		131d	
5A-12-OHLE-31	Access for E&M wayside installation ROJ - MUS	0d/21-Mar-12		131d	

Date	Revision	Checked	Approved
12-Sep-10	Revision 01 (100912)	BSC/MHE	BSC

Critical Remaining Work
 Summary
 Milestone
 Remaining Work

Project Carlisle - Airport to Haymarket

(Revision 01 100912)

EDINBURGH TRAM NETWORK

BILFINGER BERGER SIEMENS CAF
Civil

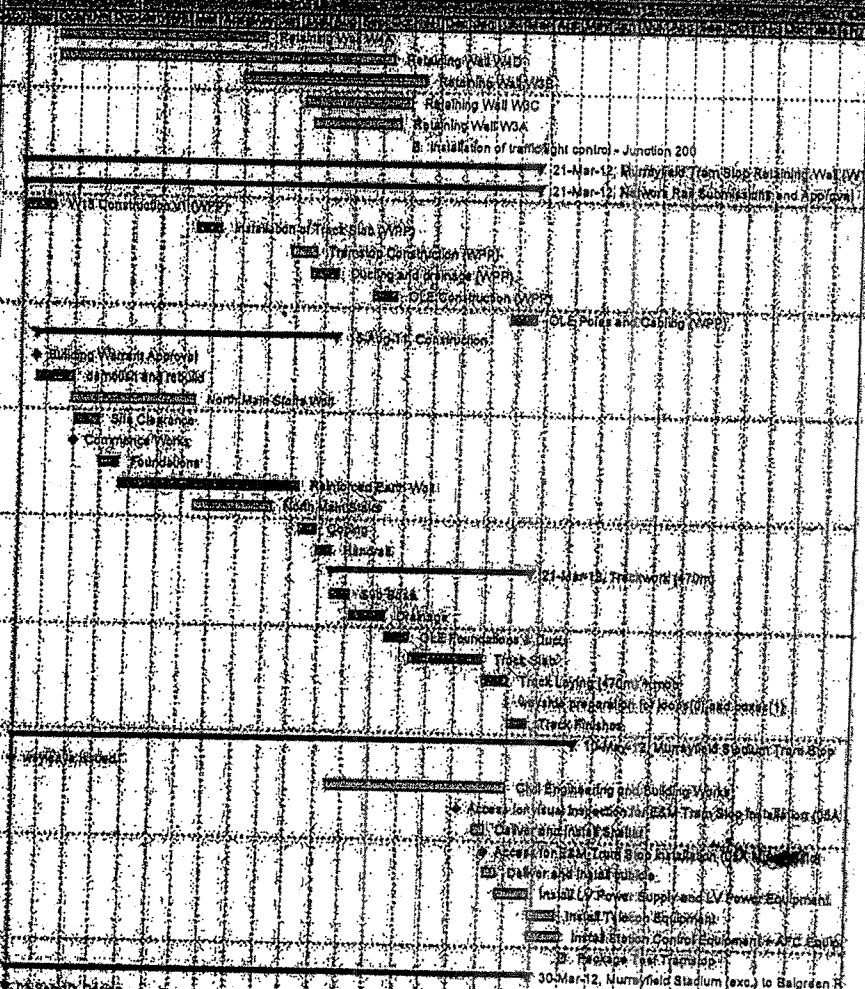
13-Sep-10

Date	Revision	Checked	Approved
12-Sep-10	Revision 01 (100912)	SCS/MHE	BSC

Item ID	Description	Start Date	End Date	Days
5A-10/11-OHLE-60	Overhead Catenary Line #13 (20 0770 - 52 0754)	28d 23-Mar-12	30-Apr-12	78d
5A-11/12/13-OHLE-60	Overhead Catenary Line -12 (20 0457 - 51 0969)	20d 10-Apr-12	23-May-12	60d
5A-11/12/13-OHLE-70	Testing & Commissioning	20d 23-May-12	21-Jun-12	60d
Roseburn Junction (exc) to Haymarket Station (exc)		21d 03-Sep-10	10-May-12	1000d
Design		04d 03-Sep-10	04-Sep-10	19d
5A-12-WTB-10	Issue Construction Drawings WTB	04d 03-Sep-10	03-Sep-10	19d
Russell Road Underbridge (S20)		27d 03-Sep-10	20-Oct-11	63d
5A-12-S20-11(3)	Permanent Piling Working Platform (Form C)	11d 03-Sep-10	17-Sep-10	20d
5A-12-S20-16(3)	OLE Poles and Cabling (WPP)	28d 03-Sep-10	28-Oct-10	324d
5A-12-S20-17(3)	Crane Working Platform (Form C)	11d 03-Sep-10	17-Sep-10	20d
5A-12-S20-19(3)	Soil Nailing v2 (Form C)	11d 03-Sep-10	17-Sep-10	20d
5A-12-S20-10(3)	Permanent Piling v1 (WPP)	3d 15-Sep-10	17-Sep-10	20d
5A-12-S20-12(3)	Protection of Gas Main v1 (WPP)	3d 15-Sep-10	17-Sep-10	20d
5A-12-S20-18(3)	S20 Construction (WPP)	3d 15-Sep-10	17-Sep-10	20d
5A-12-S20-20(3)	Soil Nailing v2 (WPP)	3d 15-Sep-10	17-Sep-10	20d
5A-12-S20-14(3)	Ducting and drainage (WPP)	28d 21-Jun-11	15-Aug-11	60d
5A-12-S20-13(3)	OLE Construction (WPP)	28d 02-Aug-11	23-Sep-11	60d
5A-12-S20-15(3)	Installation of Track Slab (WPP)	28d 29-Aug-11	20-Oct-11	60d
CONSTRUCTION		04d 03-Sep-10	16-Nov-11	1440d
5A-12-S20-40	Excavation and piling	60d 11-Oct-10	17-Jan-11	20d
5A-12-S20-50	Bases	30d 18-Jan-11	28-Feb-11	20d
5A-12-S20-51	Abutments and Wing Walls	45d 15-Feb-11	15-Apr-11	32d
5A-12-S20-60	Deck	50d 12-Apr-11	23-Jun-11	77d
5A-12-S20-80	Bridge Finishes	60d 19-Apr-11	14-Jul-11	20d
Russell Road Retaining Walls (W3 and W4)		20d 03-Sep-10	16-Nov-11	1440d
CONSTRUCTION SUBMISSIONS		10d 03-Sep-10	16-Sep-10	43d
5A-12-W4-10(3)	Slope stability for Units 1 to 10 (CAT III)	10d 03-Sep-10	16-Sep-10	43d
5A-12-W4-13(3)	TW to retain Royal Mail bldg (CAT III)	10d 03-Sep-10	16-Sep-10	43d
5A-12-W4-14(3)	Bored piling working platform to Units 1 to 10 (Form C)	10d 03-Sep-10	16-Sep-10	43d
5A-12-W4-18(3)	TW to construct pilecaps for Units 1 to 10 (In House)	10d 03-Sep-10	16-Sep-10	43d
5A-12-W4-15(3)	Slope stability for Units 23 to 29 (CAT III)	10d 03-Sep-10	16-Sep-10	43d
5A-12-W4-16(3)	Bored piling working platform to Units 23 to 29 (Form C)	10d 03-Sep-10	16-Sep-10	43d
5A-12-W4-21(3)	TW to construct pilecaps for Units 21 to 29 (In House)	10d 03-Sep-10	16-Sep-10	43d
5A-12-W4-11(3)	Open cut excav & sheet piling installation to Units 1 to 10 (WPP)	10d 03-Sep-10	16-Sep-10	43d
5A-12-W4-17(3)	Installation of bored piling to Units 1 to 10 (WPP)	10d 03-Sep-10	16-Sep-10	43d
5A-12-W4-19(3)	Construction of pilecap & walls Units 1 to 10 (WPP)	10d 03-Sep-10	16-Sep-10	43d
5A-12-W4-12(3)	Open cut excav & sheet piling installation to Units 21 to 29 (WPP)	10d 03-Sep-10	16-Sep-10	43d
5A-12-W4-20(3)	Installation of bored piling to Units 21 to 29 (WPP)	10d 03-Sep-10	16-Sep-10	43d
5A-12-W4-22(3)	Construction of pilecap & walls Units 21 to 29 (WPP)	10d 03-Sep-10	16-Sep-10	43d
CONSTRUCTION SUBMISSIONS		10d 03-Sep-10	16-Sep-10	43d
5A-12-W4-54(3)10	Temporary Realignment	10d 03-May-11	16-May-11	43d
5A-12-W4-54(3)20	Permanent Realignment	20d 20-Oct-11	16-Nov-11	1440d
CONSTRUCTION		10d 03-Sep-10	16-Sep-10	43d
5A-12-W4-53(3)	Retaining Wall W4B & 4C	20d 03-Sep-10	08-Jul-11	20d
5A-12-W4-50(3)	Retaining Wall W4A (enabling works)	10d 03-Sep-10	16-Sep-10	43d

Actual Work
 Critical Remaining Work
 Summary
 Remaining Work
 Milestone

5A-12-W4-35(3)	Retaining Wall W4A	149d	08-Oct-10	23-Mar-11	24d
5A-12-W4-39(3)	Retaining Wall W4B	247d	06-Oct-10	10-Oct-11	89d
5A-12-W3-57(3)	Retaining Wall W3B	141d	28-Apr-11	16-Nov-11	43d
5A-12-W3-58(3)	Retaining Wall W3C	63d	08-Jul-11	31-Oct-11	54d
5A-12-W3-58(3)	Retaining Wall W3A	66d	15-Jul-11	19-Oct-11	62d
5A-12-JNCS-60	Installation of traffic light control - Junction 200	53d	01-Nov-11	07-Nov-11	148d
Murrayfield Tram Stop Retaining Wall (W19)					
5A-12-W18-11	W18 Construction v1 (WPP)	25d	03-Sep-10	05-Oct-10	1d
5A-12-W18-14	Installation of Track Slab (WPP)	20d	11-Mar-11	09-Apr-11	0d
5A-12-W18-16	Tramstop Construction (WPP)	20d	24-Jun-11	22-Jul-11	29d
5A-12-W18-13	Ducting and drainage (WPP)	20d	15-Jul-11	15-Aug-11	0d
5A-12-W18-12	OLE Construction (WPP)	20d	22-Sep-11	20-Oct-11	0d
5A-12-W18-15	OLE Poles and Cabling (WPP)	20d	22-Feb-12	21-Mar-12	0d
Other Works					
5A-12-W18-02	Building Warrant Approval	0d	20-Sep-10		0d
5A-12-W18-21	Demolition and rebuild	30d	20-Sep-10	01-Nov-10	0d
5A-12-W18-31(3)	North Main Stairs Wall	65d	29-Oct-10	14-Mar-11	42d
5A-12-W18-31(3)	Site Clearance	20d	01-Nov-10	28-Nov-10	0d
5A-12-W18-01	Commence Works	0d	01-Nov-10		0d
5A-12-W18-50(3)	Foundations	15d	29-Nov-10	21-Dec-10	0d
5A-12-W18-51(3)	Reinforced Earth Wall	130d	21-Dec-10	08-Jul-11	0d
5A-12-W18-52(3)	North Main Stairs	60d	14-Mar-11	08-Jun-11	43d
5A-12-W18-52(3)	Coping	15d	05-Jul-11	29-Jul-11	0d
5A-12-W18-50(3)	Handrail	10d	29-Jul-11	15-Aug-11	0d
Trackwork (470m)					
5A-12-TRCK-50	Sub Base	15d	13-Aug-11	05-Sep-11	0d
5A-12-TRCK-60	Drainage	29d	08-Sep-11	14-Oct-11	0d
5A-12-TRCK-51(3)	OLE Foundations & Ducts	19d	14-Oct-11	10-Nov-11	0d
5A-12-TRCK-40	Track Slab	47d	10-Nov-11	31-Jan-12	0d
5A-12-TRCK-70	Track Laying (470m) + mob	20d	31-Jan-12	28-Feb-12	0d
5A-12-SIGN-80	wayside preparation for loops(0) and boxes(1)	1d	27-Feb-12	28-Feb-12	79d
5A-12-TRCK-80	Track Finishes	16d	28-Feb-12	21-Mar-12	0d
Murrayfield Stadium Tram Stop					
5A-12-TRMS-20	Wayleave issued	0d	03-Sep-10		212d
5A-12-TRMS-30(3)	Civil Engineering and Building Works	130d	15-Aug-11	28-Feb-12	29d
5A-12-TRMS-30	Access for visual inspection for E&M Tram Stop installation (05)	0d	06-Jan-12		247d
5A-12-TRMS-40	Deliver and install Shelter	10d	24-Jan-12	07-Feb-12	29d
5A-12-TRMS-31	Access for E&M Tram Stop installation (05A Murrayfield)	0d	07-Feb-12		398
5A-12-TRMS-45	Deliver and install cubicle	10d	07-Feb-12	21-Feb-12	29d
5A-12-TRMS-60	Install LV Power Supply and LV Power Equipment	25d	21-Feb-12	27-Mar-12	23d
5A-12-TRMS-70	Install Telecom Equipment	20d	27-Mar-12	25-Apr-12	34d
5A-12-TRMS-60	Install Station Control Equipment + AFC Equipment	25d	27-Mar-12	02-May-12	29d
5A-12-TRMS-60	Package Test Tramstop	5d	02-May-12	10-May-12	28d
Murrayfield Stadium (exc.) to Balgreen Road (Inc.)					
Design		305d	03-Sep-10	30-Mar-12	160d



Date	Revision	Checked	Approved
12-Sep-10	Revision 01 (100912)	SCS/MHE	BEC

Actual Work
 Critical Remaining Work
 Summary
 Remaining Work
 Milestone

Date	Revision	Checked	Approved	Page 18 of 28	Actual Work	Critical Remaining Work	Summary
12-Sep-10	Revision 01 (100912)	SCS/MHE	BSC		Remaining Work	Milestones	

Item ID	Description	Start	End	Duration	Actual Work	Critical Remaining Work	Summary
5A-11-S21B-10(3)	Issue Construction Drawings 21B	0d	03-Sep-10	36d			
5A-11-S21A-10(3)	Issue Construction Drawings S21A RC Portal Bridge	0d	03-Sep-10	35d			
5A-11-S21A-20(3)	Issue Construction Drawings S21A Steel Composite Bridge	0d	03-Sep-10	25d			
5A-11-S21A-30(3)	Issue Construction Drawings S21A RE Structure S501	0d	03-Sep-10	210d			
5A-11-S21A-40(3)	Issue Construction Drawings S21A RE Structure S503	0d	03-Sep-10	210d			
5A-11-S21A-50(3)	Issue Construction Drawings S21A RE Structure S505	0d	03-Sep-10	190d			
Roseburn Street Viaduct (S21A)							
		23-Feb-12	23-Feb-12	0d			23-Feb-12, Roseburn Street Viaduct (S21A)
							29-Feb-12, Network Rail Submissions & approval
5A-11-S21A-15(3)	S504 Construction (WPP)	40d 03-Sep-10	29-Oct-10	25d			
5A-11-S21A-16(3)	S504 Piling Working Platform (Form C)	40d 03-Sep-10	29-Oct-10	25d			
5A-11-S21A-13(3)	S502 Piling Working Platform (Form C)	40d 15-Sep-10	11-Nov-10	28d			
5A-11-S21A-12(3)	S502 Construction (WPP)	20d 14-Oct-10	11-Nov-10	26d			
5A-11-S21A-18(3)	S504 Bridge Beam Working Crane Platform (Form C)	40d 24-Jan-11	21-Mar-11	26d			
5A-11-S21A-17(3)	S504 Bridge Beam Installation (WPP)	20d 21-Feb-11	21-Mar-11	26d			
5A-11-S21A-21(3)	S505 Sheet Piling / Temp Works. (Form C)	40d 25-Apr-11	22-Jun-11	36d			
5A-11-S21A-19(3)	S505 Construction (WPP)	20d 24-May-11	22-Jun-11	36d			
5A-11-S21A-11(3)	S501 Construction (WPP)	20d 08-Jun-11	06-Jul-11	26d			
5A-11-S21A-14(3)	S503 Construction (WPP)	20d 08-Jun-11	06-Jul-11	26d			
5A-11-S21A-22(3)	OLE Construction (WPP)	20d 11-Aug-11	07-Sep-11	11d			
5A-11-S21A-23(3)	Ducting and drainage (WPP)	20d 08-Sep-11	05-Oct-11	11d			
5A-11-S21A-24(3)	Installation of Track Slab (WPP)	20d 20-Oct-11	16-Nov-11	11d			
5A-11-S21A-25(3)	OLE Poles and Cabling (WPP)	20d 01-Feb-12	29-Feb-12	0d			
Construction							
5A-11-S21A-70(3)10	Completion of Murrayfield Stadium Accommodation Works (by ...)	0d	31-Oct-10	69d			
5A-11-S21A-70(3)	Structure S504	180d 19-Nov-10	08-Oct-11	26d			
5A-11-S21A-71(3)	Structure S502	120d 03-Dec-10	27-Jul-11	26d			
5A-11-S21A-64(3)	Structure S505	80d 13-Jul-11	03-Nov-11	39d			
5A-11-S21A-62(3)	Structure S501	80d 27-Jul-11	17-Nov-11	26d			
5A-11-S21A-63(3)	Structure S503	80d 27-Jul-11	17-Nov-11	26d			
5A-11-JNCS-60	Installation of traffic light control - Junction 201	4d 08-Oct-11	12-Oct-11	167d			
Murrayfield Retaining Walls (S21B)							
		26-Jul-11	05-Oct-11	11d			05-Oct-11, Network Rail Submissions & Approval
5A-11-S21B-12(3)	Installation of sheet piles (WPP)	20d 03-Sep-10	30-Sep-10	16d			
5A-11-S21B-13(3)	Installation of sheet piles (design) (Form C)	30d 03-Sep-10	14-Oct-10	6d			
5A-11-S21B-14(3)	Construction of steep green slope section (WPP)	20d 14-Feb-11	11-Mar-11	9d			
5A-11-S21B-17(3)	Installation of Lower Ballast (WPP)	20d 05-Jul-11	05-Aug-11	11d			
5A-11-S21B-15(3)	OLE Construction (WPP)	20d 11-Aug-11	07-Sep-11	11d			
5A-11-S21B-16(3)	Ducting and drainage (WPP)	20d 08-Sep-11	05-Oct-11	11d			
Construction							
5A-11-S21B-61(3)	Sheet Piling, Ground Anchors, Bulk Excavation	22d 07-Nov-10	03-Apr-11	1d			
5A-11-S21B-31	Site Clearance	20d 21-Feb-11	18-Mar-11	9d			
5A-11-S21B-32	Demolition	10d 07-Mar-11	18-Mar-11	9d			
5A-11-S21B-51	Foundations	15d 21-Mar-11	08-Apr-11	9d			
5A-11-S21B-52	Reinforced Earth Wall	74d 04-Apr-11	19-Jul-11	9d			
5A-11-S21B-53	Coping	15d 20-Jul-11	10-Aug-11	9d			
5A-11-S21B-50	Handrail	10d 11-Aug-11	24-Aug-11	9d			

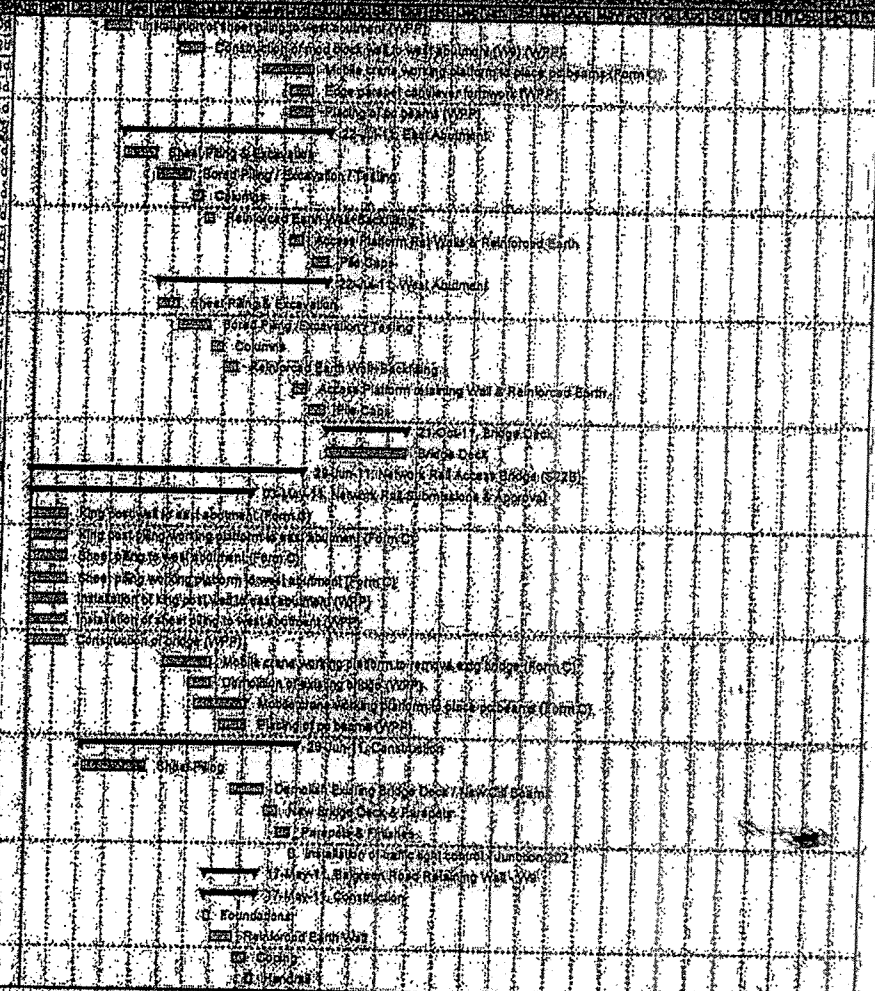
Item ID	Description	Start Date	End Date	Status
Murrayfield Stadium Underpass (S21C)				
5A-11-S21C-31	Site Clearance	10d 04-Feb-11	17-Feb-11	9d
5A-11-S21C-32	Temporary Works - Demolition	20d 16-Feb-11	17-Mar-11	9d
5A-11-S21C-32(3)	Additional Sheet Piling	20d 16-Mar-11	14-Apr-11	9d
5A-11-S21C-33	Earthworks	10d 15-Apr-11	24-Apr-11	9d
5A-11-S21C-51	Base	10d 03-May-11	16-May-11	9d
5A-11-S21C-52	Walls	20d 17-May-11	14-Jun-11	9d
5A-11-S21C-61	Roof	20d 16-Jun-11	12-Jul-11	9d
5A-11-S21C-62	Parapet Walls	15d 06-Jul-11	26-Jul-11	9d
5A-11-S21C-60	Finishes	10d 27-Jul-11	16-Aug-11	9d
Murrayfield Retaining Walls (S21D)				
5A-11-S21D-25(3)	Network Rail Form C Submission & Approval	25d 03-Sep-10	20-Oct-10	9d
5A-11-S21D-11(3)	Crane Working Platform (Form C)	25d 03-Sep-10	07-Oct-10	9d
5A-11-S21D-13(3)	Soil Nailing Working Platform (Form C)	25d 03-Sep-10	07-Oct-10	9d
5A-11-S21D-10(3)	Construction v2 (WPP)	20d 03-Dec-10	13-Jan-11	9d
5A-11-S21D-12(3)	Soil Nailing v2 (WPP)	20d 28-Jan-11	14-Feb-11	9d
Water of Leith Bridge (S21E)				
5A-11-S21E-13(3)	Mobile crane working platform to construct bridge (Form C)	5d 03-Sep-10	09-Sep-10	9d
5A-11-S21E-14(3)	Installation of sheet piling to centre pier (VPP)	5d 03-Sep-10	09-Sep-10	9d
5A-11-S21E-15(3)	Installation of bored piling to centre pier (VPP)	5d 03-Sep-10	09-Sep-10	9d
5A-11-S21E-16(3)	Construction of centre pier (WPP)	5d 03-Sep-10	09-Sep-10	9d
5A-11-S21E-11(3)	Sheet piling working platform to centre pier (Form C)	5d 03-Sep-10	09-Sep-10	9d
5A-11-S21E-12(3)	Bored piling working platform to centre pier (Form C)	5d 03-Sep-10	09-Sep-10	9d
5A-11-S21E-17(3)	Construction of abutments (WPP)	5d 02-Dec-10	09-Dec-10	9d
5A-11-S21E-18(3)	Construction of deck (WPP)	20d 15-Mar-11	11-Apr-11	11d

Date	Revision	Checked	Approved	Page 13 of 29	<input type="checkbox"/> Actual Work <input type="checkbox"/> Remaining Work <input type="checkbox"/> Critical Remaining Work <input type="checkbox"/> Milestone <input type="checkbox"/> Summary
12-Sep-10	Revision 01 (100912)	SCS/JMR	ESC		

Date	Revision	Checked	Approved
12-Sep-10	Revision 01 (100912)	SCS/MHE	BSC

Item ID	Description	Start Date	End Date	Duration
5A-11-S21E-19(3)	Sisal Work Carried out by Maybe Construction	20d 15-Mar-11	31-Apr-11	41d
5A-11-S21E-25(3)	Sewer Enabling Works	20d 03-Sep-10	30-Sep-10	28d
5A-11-S21E-45(3)	Formation to East Abutment (Murrayfield)	48d 22-Oct-10	32-Jan-11	63d
5A-11-S21E-46(3)	Bankseat	25d 18-Jan-11	18-Feb-11	30d
5A-11-S21E-47(3)	Phase 2	11d 25-Jul-11	04-Aug-11	10d
5A-11-S21E-51	Leaf Pier	106d 01-Oct-10	28-Apr-11	189d
5A-11-S21E-52	Formation to West Abutment (Baird Drive)	85d 19-Nov-10	07-Apr-11	110d
5A-11-S21E-53	Bankseat	17d 08-Apr-11	04-May-11	27d
5A-11-S21E-53	Phase 2	26d 14-Jul-11	19-Aug-11	35d
5A-11-S21E-60	Bridge Deck & Finishes	40d 05-May-11	25-Aug-11	79d
5A-11-WB-10(3)	Slope stability for steep green slope section (Form C)	10d 03-Sep-10	16-Sep-10	14d
5A-11-WB-11(3)	Sheet piling to eastern end (WoL) (Form C)	40d 03-Sep-10	28-Oct-10	56d
5A-11-WB-12(3)	Sheet piling working platform to eastern end (WoL) (Form C)	40d 03-Sep-10	28-Oct-10	56d
5A-11-WB-25(3)160	Site Setup (WPP)	10d 03-Sep-10	16-Sep-10	14d
5A-11-WB-13(3)	Sheet piling to western end (Balgreen) (Form C)	40d 17-Sep-10	11-Nov-10	55d
5A-11-WB-14(3)	Sheet piling working platform to western end (Balgreen) (Form C)	40d 17-Sep-10	11-Nov-10	55d
5A-11-WB-16(3)	Installation of sheet piling to eastern end (WoL) (WPP)	20d 01-Oct-10	28-Oct-10	27d
5A-11-WB-16(3)	Installation of sheet piling to western end (Balgreen) (WPP)	20d 15-Oct-10	11-Nov-10	27d
5A-11-WB-15(3)	Construction of steep green slope section (WPP)	20d 24-Nov-10	22-Dec-10	29d
5A-11-WB-19(3)	Construction of mod block wall to western end (Balgreen) (WPP)	20d 18-Apr-11	17-May-11	30d
5A-11-WB-17(3)	Construction of mod block wall to eastern end (WoL) (WPP)	20d 21-Apr-11	20-May-11	30d
5A-11-WB-20(3)	Construction of NWR Access Road (WPP)	20d 09-Jul-11	05-Aug-11	27d
5A-11-WB-23(3)	Installation of Lower Ballast (WPP)	20d 08-Jul-11	06-Aug-11	29d
5A-11-WB-21(3)	OLE Construction (WPP)	20d 11-Aug-11	07-Sep-11	27d
5A-11-WB-22(3)	Quoting and drainage (WPP)	20d 08-Sep-11	05-Oct-11	28d
5A-11-WB-24(3)	OLE Poles and Cabling (WPP)	20d 17-Jan-12	13-Feb-12	27d
5A-11-WB-51(3)	Bulk Excavation	35d 20-Sep-10	05-Nov-10	46d
5A-11-WB-52	Starter Layer	26d 05-Oct-10	08-Nov-10	34d
5A-11-WB-52	Green Slope	67d 27-Jan-11	15-Apr-11	79d
5A-11-WB-53	Parapet	10d 04-Jul-11	15-Jul-11	11d
5A-11-S22A-12(3)	Bored piling working platform to both abutments (Form C)	40d 12-Oct-10	07-Dec-10	56d
5A-11-S22A-10(3)	Sheet piling to west abutment (Form C)	40d 15-Oct-10	10-Dec-10	56d
5A-11-S22A-11(3)	Sheet piling working platform to west abutment (Form C)	40d 15-Oct-10	10-Dec-10	56d
5A-11-S22A-19(3)	Construction of bridge (WPP)	20d 15-Oct-10	11-Nov-10	27d
5A-11-S22A-27(3)	Mobilise	5d 29-Oct-10	04-Nov-10	6d
5A-11-S22A-16(3)	Installation of bored piling to both abutments (WPP)	20d 09-Nov-10	10-Dec-10	31d

Item No.	Description	Start Date	End Date	Duration
5A-11-S22A-16(3)	Installation of sheet piling to west abutment (WPP)	29d 12-Nov-10	10-Dec-10	40d
5A-11-S22A-17(3)	Construction of mud block wall to west abutment (WPP)	20d 03-Feb-11	02-Mar-11	42d
5A-11-S22A-18(3)	Mobile crane working platform to place pc beams (Form C)	40d 06-May-11	01-Jul-11	84d
5A-11-S22A-14(3)	Edge parapet cantilever formwork (WPP)	20d 09-Jun-11	01-Jul-11	24d
5A-11-S22A-19(3)	Placing of pc beams (WPP)	20d 06-Jun-11	01-Jul-11	24d
EXTENSION				
5A-11-S22A-130(3)	Sheet Piling & Excavation	17d 09-Dec-10	11-Jan-11	43d
5A-11-S22A-160(3)	Bored Piling / Excavation / Testing	28d 12-Jan-11	18-Feb-11	43d
5A-11-S22A-180(3)	Columns	10d 21-Feb-11	04-Mar-11	43d
5A-11-S22A-190(3)	Reinforced Earth Wall/Backfilling	9d 07-Mar-11	17-Mar-11	43d
5A-11-S22A-220(3)	Access Platform Ret Walls & Reinforced Earth	12d 09-Jun-11	24-Jun-11	40d
5A-11-S22A-200(3)	Pile Caps	15d 04-Jul-11	22-Jul-11	24d
WEST ABUTMENT				
5A-11-S22A-210(3)	Sheet Piling & Excavation	17d 17-Jun-11	08-Feb-11	40d
5A-11-S22A-240(3)	Bored Piling / Excavation / Testing	28d 09-Feb-11	16-Mar-11	40d
5A-11-S22A-260(3)	Columns	10d 17-Mar-11	06-Mar-11	40d
5A-11-S22A-280(3)	Reinforced Earth Wall/Backfilling	12d 31-Mar-11	15-Apr-11	40d
5A-11-S22A-380(3)	Access Platform retaining Wall & Reinforced Earth	12d 16-Jun-11	01-Jul-11	40d
5A-11-S22A-390(3)	Pile Caps	15d 04-Jul-11	22-Jul-11	24d
BRIDGE DECK				
5A-11-S22A-290(3)	Bridge Deck	24d 25-Jul-11	21-Oct-11	84d
Network Rail Access Bridge (NAB)				
5A-11-S22B-10(3)	King post wall to east abutment (Form C)	30d 03-Sep-10	14-Oct-10	40d
5A-11-S22B-11(3)	King post piling working platform to east abutment (Form C)	30d 03-Sep-10	14-Oct-10	40d
5A-11-S22B-12(3)	Sheet piling to west abutment (Form C)	30d 03-Sep-10	14-Oct-10	40d
5A-11-S22B-13(3)	Sheet piling working platform to west abutment (Form C)	30d 03-Sep-10	14-Oct-10	40d
5A-11-S22B-16(3)	Installation of king post wall to east abutment (WPP)	30d 03-Sep-10	14-Oct-10	40d
5A-11-S22B-17(3)	Installation of sheet piling to west abutment (WPP)	30d 03-Sep-10	14-Oct-10	40d
5A-11-S22B-20(3)	Construction of bridge (WPP)	30d 03-Sep-10	14-Oct-10	40d
5A-11-S22B-14(3)	Mobile crane working platform to remove extg bridge (Form C)	40d 31-Jan-11	25-Mar-11	60d
5A-11-S22B-18(3)	Demolition of existing bridge (WPP)	20d 28-Feb-11	25-Mar-11	40d
5A-11-S22B-15(3)	Mobile crane working platform to place pc beams (Form C)	40d 07-Mar-11	03-May-11	60d
5A-11-S22B-19(3)	Placing of pc beams (WPP)	20d 04-Apr-11	03-May-11	40d
CONSTRUCTION				
5A-11-S22B-10(3)	Sheet Piling	40d 06-Nov-10	14-Jan-11	40d
5A-11-S22B-20(3)	Demolish Existing Bridge Deck / New CII Beams	28d 18-Apr-11	24-May-11	40d
5A-11-S22B-30(3)	New Bridge Deck & Parapets	10d 25-May-11	08-Jun-11	40d
5A-11-S22B-40(3)10	Parapets & Finishes	11d 09-Jun-11	23-Jun-11	240d
5A-11-JNCS-70(3)	Installation of traffic light control - Junction 202	4d 24-Jun-11	28-Jun-11	240d
Balgreen (Road Retaining Wall) - R10				
5A-11-W9-110(3)	Foundations	5d 24-Mar-11	30-Mar-11	82d
5A-11-W9-115(3)	Reinforced Earth Wall	17d 31-Mar-11	25-Apr-11	82d
5A-11-W9-120(3)	Coping	10d 26-Apr-11	10-May-11	82d
5A-11-W9-125(3)	Handrail	5d 11-May-11	17-May-11	82d



Date	Revision	Checked	Approved
12-Sep-10	Revision 01 (100912)	BSC/SJHE	BSC

Taskwork ID (100000)	Description	Start	End	Days
5A-11-TRCK-30	Prepare Formation & Lower Ballast	23d 28-Aug-11	28-Sep-11	11d
5A-11-TRCK-50	OLE Foundations	20d 28-Sep-11	28-Oct-11	11d
5A-11-TRCK-60	Drainage & ducts	30d 27-Oct-11	08-Nov-11	11d
5A-11-TRCK-40	Upper Ballast	20d 08-Dec-11	18-Jan-12	11d
5A-11-TRCK-45	Track Slab	20d 08-Dec-11	18-Jan-12	11d
5A-11-TRCK-70	Tracklaying (1006m)	27d 20-Jan-12	27-Feb-12	11d
5A-11-SIGN-80	Wayside preparation for loops(0) and boxes(4)	2d 24-Feb-12	27-Feb-12	206d
5A-11-TRCK-80	Top Ballast	5d 28-Feb-12	05-Mar-12	11d
5A-11-TRCK-81	Fencing & Finishing	19d 08-Mar-12	30-Mar-12	58d
Balgreen Road Tram Stop				
5A-11-TRMS-20	Wayleave issued	0d 03-Sep-10		338d
5A-11-TRMS-90	Civil Engineering and Builders Work	65d 22-Jun-11	21-Sep-11	170d
5A-11-TRMS-30	Access for visual inspection for E&M Tram Stop Installation (05...	0d 02-Aug-11		400d
5A-11-TRMS-40	Deliver and Install Shelter	10d 18-Aug-11	31-Aug-11	170d
5A-11-TRMS-31	Access for E&M Tram Stop Installation (05A Balgreen Road)	0d 01-Sep-11		214d
5A-11-TRMS-45	Deliver and Install cubicles	10d 01-Sep-11	14-Sep-11	170d
5A-11-TRMS-50	Install LV Power Supply and LV Power Equipment	25d 15-Sep-11	19-Oct-11	170d
5A-11-TRMS-70	Install Telecom Equipment	20d 20-Oct-11	16-Nov-11	175d
5A-11-TRMS-60	Install Station Control Equipment + AFC Equipment	26d 20-Oct-11	23-Nov-11	170d
5A-11-TRMS-80	Package Test Tramstop	5d 24-Nov-11	01-Dec-11	170d
Jenners Depository Sub Station				
5A-11-SUBS-120	Wayleave granted (substation area)	0d	03-Sep-10	271d
5A-11-SUBS-110	meter issue for power supply clarified	0d	03-Sep-10	281d
5A-11-SUBS-90	Civil Engineering and Building Works	65d 17-Nov-10	02-Mar-11	198d
5A-11-SUBS-30	Access for visual inspection for E&M Substation Installation (05...	0d 01-Feb-11		204d
5B-11-SUBS-100	cable duct for Power Infeed	5d 01-Feb-11	08-Feb-11	206d
5A-11-SUBS-130	Installation HV cable	30d 05-Feb-11	22-Mar-11	200d
5A-11-SUBS-31	Access for E&M Substation Installation (05A Jenners Depository)	0d 03-Mar-11		204d
5A-11-SUBS-40	Power Infeed from Public Net available inc HV cable	0d 22-Mar-11		204d
5B-10-SUBS-45	Install HV Power Supply and Equipment (SP)	16d 30-Mar-11	20-Apr-11	194d
5A-11-SUBS-50	Install LV Power Supply and LV Power Equipment	15d 20-Apr-11	13-May-11	245d
5B-11-SUBS-55	Energisation Scottish Power	0d 08-May-11		404d
5A-11-SUBS-70	Install Telecom and Scada	15d 13-May-11	06-Jun-11	244d
5A-11-SUBS-80	Installation of TPS Equipment	30d 05-Jun-11	16-Jul-11	244d
5A-11-SUBS-80	Testing and Commissioning	14d 18-Jul-11	08-Aug-11	244d
05B BALGREEN ROAD (EX-10) EDINBURGH TRAM CONTROL POINT				
5B-05-UTL-1003	Saughton Road North to Bankhead (South Gyle Access Sawp...	0d	01-Nov-10	540
E&M Installations				
5B-10-ELEC-30	Access for visual inspection to cable pits for cable laying BAL -	0d 20-May-11		455d
5B-10-OHLE-30	Access for visual inspection for E&M wayside installation BAL -	0d 20-May-11		455d
5B-08-OHLE-30	Access for visual inspection for E&M wayside installation BNK -	0d 24-May-11		428d
5B-08-ELEC-30	Access for visual inspection to cable pits for cable laying BNK -	0d 24-May-11		428d
5B-09-10-OHLE-50	Installation of poles and building fixings -14 (52 0836 - 52 2032)	10d 22-Jun-11	08-Jul-11	249d
5B-10-ELEC-31	Access to cable pits for cable laying BAL - SGT	0d 22-Jun-11		279d

Date	Revision	Checked	Approved
12-Sep-10	Revision 01 (100912)	SCS/MHE	BSC

Legend:
 Active Work
 Critical Remaining Work
 Summary
◆ Milestone

Date	Revision	Checked	Approved	Page 17 of 20	Actual Work	Critical Remaining Work	Summary
12-Sep-10	Revision 01 (100912)	SCS/MHE	BBC		Remaining Work	Milestone	
58-10-OHLE-31	Access for E&M wayside installation BAL - SGT	0d 22-Jun-11	226d		Access for E&M wayside installation BAL - SGT		
58-08-SIGN-40	Installation of SIG-interlocking cubicle EPS	16d 24-Jun-11	277d		Installation of SIG-interlocking cubicle EPS		
58-08-ELEC-31	Access to cable pits for cable laying BNK - EPS	0d 24-Jun-11	260d		Access to cable pits for cable laying BNK - EPS		
58-08-OHLE-31	Access for E&M wayside installation BNK - EPS	0d 24-Jun-11	247d		Access for E&M wayside installation BNK - EPS		
58-08-ELEC-60	Install Electrical Cables BNK - EPS	8d 24-Jun-11	273d		Install Electrical Cables BNK - EPS		
58-07-OHLE-30	Access for visual inspection for E&M wayside installation EPS -	0d 01-Jul-11	409d		Access for visual inspection for E&M wayside installation EPS -		
58-07-ELEC-30	Access for visual inspection to cable pits for cable laying EPS -	0d 01-Jul-11	409d		Access for visual inspection to cable pits for cable laying EPS -		
58-09/10-OHLE-60	Overhead Catenary Line -14 (52 0535 - 52 2032)	26d 08-Jul-11	249d		Overhead Catenary Line -14 (52 0535 - 52 2032)		
58-08-SIGN-90	Installation of SIG equipment on crossover EPS	5d 08-Jul-11	277d		Installation of SIG equipment on crossover EPS		
58-08-SIGN-80	Commissioning of SIG-interlocking cubicle EPS	6d 15-Jul-11	277d		Commissioning of SIG-interlocking cubicle EPS		
58-07-ELEC-80	Install Electrical Cables EPS - EDP	7d 03-Aug-11	254d		Install Electrical Cables EPS - EDP		
58-07-OHLE-31	Access for E&M wayside installation EPS - EDP	0d 03-Aug-11	228d		Access for E&M wayside installation EPS - EDP		
58-07-ELEC-31	Access to cable pits for cable laying EPS - EDP	0d 03-Aug-11	248d		Access to cable pits for cable laying EPS - EDP		
58-07/08-TELC-60	Install Fibre Optic Cables BNK - EPS - EDP	8d 03-Aug-11	253d		Install Fibre Optic Cables BNK - EPS - EDP		
58-07-SGNW-60	Install Signalling Wayside Equipment EPS - EDP	7d 03-Aug-11	249d		Install Signalling Wayside Equipment EPS - EDP		
58-07/08-OHLE-30	Installation of poles and building fixings -15 (52 3059 - 52 4464)	9d 03-Aug-11	228d		Installation of poles and building fixings -15 (52 3059 - 52 4464)		
58-08-SGNW-60	Install Signalling Wayside Equipment BNK - EPS	8d 12-Aug-11	248d		Install Signalling Wayside Equipment BNK - EPS		
58-07/08-OHLE-60	Overhead Catenary Line -16 (52 3059 - 52 4464 + 52 3821 - 52...	24d 16-Aug-11	229d		Overhead Catenary Line -16 (52 3059 - 52 4464 + 52 3821 - 52...		
58-09-ELEC-30	Access for visual inspection to cable pits for cable laying SGT -	0d 28-Sep-11	302d		Access for visual inspection to cable pits for cable laying SGT -		
58-09-OHLE-30	Access for visual inspection for E&M wayside installation SGT -	0d 28-Sep-11	302d		Access for visual inspection for E&M wayside installation SGT -		
58-09-SGNW-60	Install Signalling Wayside Equipment SGT - BNK	10d 31-Oct-11	137d		Install Signalling Wayside Equipment SGT - BNK		
58-09-ELEC-31	Access to cable pits for cable laying SGT - BNK	0d 31-Oct-11	137d		Access to cable pits for cable laying SGT - BNK		
58-09/09-TELC-60	Install Fibre Optic Cables SGT - BNK - EPS	8d 31-Oct-11	137d		Install Fibre Optic Cables SGT - BNK - EPS		
58-09-OHLE-31	Access for E&M wayside installation SGT - BNK	0d 31-Oct-11	137d		Access for E&M wayside installation SGT - BNK		
58-09-ELEC-60	Install Electrical Cables SGT - BNK	10d 31-Oct-11	137d		Install Electrical Cables SGT - BNK		
58-09/10-TELC-60	Install Fibre Optic Cables BAL - SGT - BNK	12d 11-Nov-11	137d		Install Fibre Optic Cables BAL - SGT - BNK		
58-10-SGNW-60	Install Signalling Wayside Equipment BAL - SGT	13d 14-Nov-11	197d		Install Signalling Wayside Equipment BAL - SGT		
58-10-ELEC-60	Install Electrical Cables BAL - SGT	13d 14-Nov-11	137d		Install Electrical Cables BAL - SGT		
58-08/09-OHLE-50	Installation of poles and building fixings -15 (52 1827 - 52 3273)	10d 22-Nov-11	120d		Installation of poles and building fixings -15 (52 1827 - 52 3273)		
58-08/09-OHLE-60	Overhead Catenary Line -15 (52 1827 - 52 3273)	24d 07-Dec-11	180d		Overhead Catenary Line -15 (52 1827 - 52 3273)		
58-10/11-TELC-60	Install Fibre Optic Cables MUS - BAL - SGT	12d 08-Mar-12	53d		Install Fibre Optic Cables MUS - BAL - SGT		
Station Road (opp. to) to Station Road North (opp.)				12d 08-Sep-10	131d 07-11	322d	
Carnegie Bridge (B21)				12d 08-Sep-10	131d 07-11	322d	
58-10-S23-10(3)				24d 01-Sep-10	30-Sep-10	459d	
58-10-S23-11(3)				20d 03-May-11	31-May-11	210d	
Abutment Wall				28d 06-Sep-10	12-Oct-10	386d	
58-10-S23-55N(3)				28d 06-Sep-10	12-Oct-10	386d	
Wing Walls				24d 00-Sep-10	06-Oct-10	642d	
58-10-S23-76N				24d 00-Sep-10	06-Oct-10	642d	
Wing Walls				17d 06-Sep-10	27-Sep-10	418d	
58-10-S23-75S				17d 06-Sep-10	27-Sep-10	418d	
Abutment Wall				21d 02-Sep-10	01-Oct-10	399d	
58-10-S23-66S(3)				21d 02-Sep-10	01-Oct-10	399d	

Date	Revision	Revision	Checked	Approved
12-Sep-10	Revision 01 (100912)		SCS/MRE	BSC

Item ID	Description	Start Date	End Date	Value
5B-10-S23-82	Waterproofing (inc. deck curing)	03-Sep-10	08-Sep-10	432d
5B-10-S23-83	Walkway Construction	03-Sep-10	21-Sep-10	276d
5B-10-S23-80	Expansion Joints	09-Sep-10	10-Sep-10	288d
5B-10-S23-81	Parapet Rails	22-Oct-10	28-Oct-10	432d
5B-10-S23-71	Backfill and cast slab south	04-Oct-10	13-Oct-10	312d
5B-10-S23-70	Backfill and cast slab north	13-Oct-10	22-Oct-10	360d
5B-10B-S23-84	Containment Slabs	03-Sep-10	30-Sep-10	432d
5B-10-S23-85	Drainage	22-Sep-10	13-Oct-10	432d
5B-10B-TRCK-70	Fix Rails	25-Oct-10	03-Nov-10	396d
5B-10C-SIGN-800	wayside preparation for loops(0) and boxes(2)	03-Nov-10	03-Nov-10	360d
Trackwork (3490m)				
5B-10C-TRCK-30	Earthworks - Subbase	22-Sep-10	08-Nov-10	326d
5B-10C-TRCK-40	OLE Foundations - Drainage - Ducts	08-Nov-10	13-Dec-10	326d
5B-10C-TRCK-41(3)	Additional Drainage	14-Sep-10	25-Jan-11	326d
5B-10C-TRCK-70	Track laying	22-Jun-11	05-Jul-11	326d
5B-10C-SIGN-80	wayside preparation for loops(0) and boxes(3)	04-Jul-11	05-Jul-11	326d
5B-10C-TRCK-80	Fencing & Finishes	08-Jul-11	21-Jul-11	326d
Blairhall Tram Stop				
5B-10A-TRCK-30	Earthworks - Subbase	03-Sep-10	30-Sep-10	170d
5B-10A-TRCK-31(3)	Additional Earthworks	01-Oct-10	14-Oct-10	170d
5B-10A-TRCK-30	OLE Foundations - Drainage	15-Oct-10	18-Nov-10	170d
5B-10A-TRCK-60	Additional Drainage	17-Nov-10	15-Dec-10	170d
5B-10A-TRCK-40	Bottom Ballast - Ducts	16-Dec-10	31-Jan-11	170d
5B-10A-TRCK-70	Track laying (1160m)	26-Mar-11	28-Apr-11	170d
5B-10A-SIGN-60	wayside preparation for loops(0) and boxes(4)	28-Apr-11	28-Apr-11	323d
5B-10A-TRCK-78	Top Ballast	27-Apr-11	18-May-11	170d
5B-10A-TRCK-60	Fencing & Trackside Finishes	19-May-11	21-Jun-11	170d
Saughton Road North (exc.) to Bankhead (inc.)				
5B-10-TRMS-20	waysave issued	03-Sep-10		288d
5B-10-TRMS-90	Civil Engineering and Building Works	06-Sep-10	08-Dec-10	284d
5B-10-TRMS-30	Access for visual inspection for E&M Tram Stop Installation (05B Saughton Road North)	14-Oct-10		543d
5B-10-TRMS-40	Deliver and Install Shelter	01-Nov-10	12-Nov-10	264d
5B-10-TRMS-31	Access for E&M Tram Stop Installation (05B Saughton Road North)	15-Nov-10		380d
5B-10-TRMS-45	Deliver and Install cubicle	15-Nov-10	28-Nov-10	274d
5B-10-TRMS-60	Install LV Power Supply and LV Power Equipment	29-Nov-10	17-Jan-11	174d
5B-10-TRMS-70	Install Telecom Equipment	16-Jan-11	14-Feb-11	324d
5B-10-TRMS-60	Install Station Control Equipment + AFG Equipment	18-Jan-11	21-Feb-11	324d
5B-10-TRMS-80	Package Test Tramstop	22-Feb-11	23-Feb-11	324d
Saughton Road North (exc.) to Bankhead (inc.)				
5B-09-SUBS-110	waysave granted (substation area)			276d
5B-09-SUBS-120	waysave issued for power supply clarified			291d

Item ID	Description	Start Date	End Date	Value
5B-10-TRMS-20	waysave issued	03-Sep-10		288d
5B-10-TRMS-90	Civil Engineering and Building Works	06-Sep-10	08-Dec-10	284d
5B-10-TRMS-30	Access for visual inspection for E&M Tram Stop Installation (05B Saughton Road North)	14-Oct-10		543d
5B-10-TRMS-40	Deliver and Install Shelter	01-Nov-10	12-Nov-10	264d
5B-10-TRMS-31	Access for E&M Tram Stop Installation (05B Saughton Road North)	15-Nov-10		380d
5B-10-TRMS-45	Deliver and Install cubicle	15-Nov-10	28-Nov-10	274d
5B-10-TRMS-60	Install LV Power Supply and LV Power Equipment	29-Nov-10	17-Jan-11	174d
5B-10-TRMS-70	Install Telecom Equipment	16-Jan-11	14-Feb-11	324d
5B-10-TRMS-60	Install Station Control Equipment + AFG Equipment	18-Jan-11	21-Feb-11	324d
5B-10-TRMS-80	Package Test Tramstop	22-Feb-11	23-Feb-11	324d
Saughton Road North (exc.) to Bankhead (inc.)				
5B-09-SUBS-110	waysave granted (substation area)			276d
5B-09-SUBS-120	waysave issued for power supply clarified			291d

Item ID	Description	Start Date	End Date	Value
5B-10-TRMS-20	waysave issued	03-Sep-10		288d
5B-10-TRMS-90	Civil Engineering and Building Works	06-Sep-10	08-Dec-10	284d
5B-10-TRMS-30	Access for visual inspection for E&M Tram Stop Installation (05B Saughton Road North)	14-Oct-10		543d
5B-10-TRMS-40	Deliver and Install Shelter	01-Nov-10	12-Nov-10	264d
5B-10-TRMS-31	Access for E&M Tram Stop Installation (05B Saughton Road North)	15-Nov-10		380d
5B-10-TRMS-45	Deliver and Install cubicle	15-Nov-10	28-Nov-10	274d
5B-10-TRMS-60	Install LV Power Supply and LV Power Equipment	29-Nov-10	17-Jan-11	174d
5B-10-TRMS-70	Install Telecom Equipment	16-Jan-11	14-Feb-11	324d
5B-10-TRMS-60	Install Station Control Equipment + AFG Equipment	18-Jan-11	21-Feb-11	324d
5B-10-TRMS-80	Package Test Tramstop	22-Feb-11	23-Feb-11	324d
Saughton Road North (exc.) to Bankhead (inc.)				
5B-09-SUBS-110	waysave granted (substation area)			276d
5B-09-SUBS-120	waysave issued for power supply clarified			291d

Date	Revision	Checked	Approved	Page 18 of 25	Actual Work	Critical Remaining Work	Summary
12-Sep-10	Revision 01 (100912)	BCS/MHE	BBC		█	█	◆

ID	Description	Start	End	Duration	Work Type
5B-09-SUBS-00	Civil Engineering and Building Works	35d 11-Oct-10	28-Nov-10	29d	Actual Work
5B-09-SUBS-30	Access for visual inspection for E&M Substation Installation (05B Bankhead Drive)	0d 29-Oct-10		27d	Actual Work
5B-09-SUBS-100	cable duct for Power Infeed	5d 29-Oct-10	04-Nov-10	26d	Actual Work
5B-09-SUBS-130	Installation HV cable	25d 05-Nov-10	10-Dec-10	26d	Actual Work
5B-09-SUBS-31	Access for E&M Substation Installation (05B Bankhead Drive)	0d 29-Nov-10		27d	Actual Work
5B-09-SUBS-40	Power Infeed from Public Net available for HV cable	0d 13-Dec-10		26d	Actual Work
5B-09-SUBS-45	Install HV Power Supply and Equipment (SP)	15d 13-Dec-10	17-Jan-11	26d	Actual Work
5B-09-SUBS-50	Install LV Power Supply and LV Power Equipment	15d 17-Jan-11	07-Feb-11	28d	Actual Work
5B-09-SUBS-55	Commissioning Scottish Power	0d 31-Jan-11		47d	Actual Work
5B-09-SUBS-70	Install Telecom and Scada	15d 07-Feb-11	28-Feb-11	28d	Actual Work
5B-09-SUBS-60	Installation of TPS Equipment	30d 28-Feb-11	11-Apr-11	28d	Actual Work
5B-09-SUBS-80	Testing and Commissioning	14d 11-Apr-11	03-May-11	28d	Actual Work
5B-09-TRMS-20	Wayleave issued	0d 03-Sep-10		33d	Actual Work
5B-09-TRMS-00	Civil Engineering and Building Works	65d 26-Sep-11	10-Jan-12	64d	Actual Work
5B-09-TRMS-30	Access for visual inspection for E&M Tram Stop Installation (05B South Gyle)	0d 04-Nov-11		29d	Actual Work
5B-09-TRMS-40	Deliver and Install Shelter	10d 21-Nov-11	08-Dec-11	64d	Actual Work
5B-09-TRMS-31	Access for E&M Tram Stop Installation (05B South Gyle)	0d 08-Dec-11		64d	Actual Work
5B-09-TRMS-45	Deliver and install cubicle	10d 08-Dec-11	20-Dec-11	64d	Actual Work
5B-09-TRMS-50	Install LV Power Supply and LV Power Equipment	25d 20-Dec-11	07-Feb-12	64d	Actual Work
5B-09-TRMS-70	Install Telecom Equipment	20d 07-Feb-12	105-Mar-12	88d	Actual Work
5B-09-TRMS-60	Install Station Control Equipment + AFC Equipment	25d 07-Feb-12	13-Mar-12	64d	Actual Work
5B-09-TRMS-80	Package Test Tramstop	5d 13-Mar-12	20-Mar-12	64d	Actual Work
5B-09-S26-11	Sheet piling working platform to toe of embankment (Form C)	25d 08-Sep-10	11-Oct-10	64d	Actual Work
5B-09-S26-12	Bored piling working platform to abutments (Form C)	25d 08-Sep-10	11-Oct-10	64d	Actual Work
5B-09-S26-13	Mobile crane working platform to place pc beams (Form C)	25d 08-Sep-10	11-Oct-10	64d	Actual Work
5B-09-S26-10	Sheet piling along toe of embankment (WPP)	20d 13-Sep-10	11-Oct-10	64d	Actual Work
5B-09-S26-15	Installation of sheet piling to toe of embankment (WPP)	20d 13-Sep-10	11-Oct-10	64d	Actual Work
5B-09-S26-16	Installation of bored piling to abutments (WPP)	20d 13-Sep-10	11-Oct-10	64d	Actual Work
5B-09-S26-17	Construction of abutments (WPP)	20d 13-Sep-10	11-Oct-10	64d	Actual Work
5B-09-S26-18	Construction of mod block wall to abutments (W11) (WPP)	20d 13-Sep-10	11-Oct-10	64d	Actual Work
5B-09-S26-20	Construction of bridge (WPP)	20d 13-Sep-10	11-Oct-10	64d	Actual Work
5B-09-S26-14	Edge parapet cantilever formwork (WPP)	20d 03-Mar-11	31-Mar-11	68d	Actual Work
5B-09-S26-19	Placing of pc beams (WPP)	20d 03-Mar-11	31-Mar-11	68d	Actual Work
5B-09-S26-100	Completion of Sewer Diversion (by others)	0d	31-Oct-10	64d	Actual Work
5B-09-S26-90	Substructure	112d 31-Nov-10	21-Apr-11	64d	Actual Work
5B-09-S26-01	Superstructure	76d 21-Apr-11	11-Aug-11	88d	Actual Work
5B-09-W11-100	Retaining Wall Construction	89d 01-Nov-10	04-Apr-11	97d	Actual Work
5B-09-JNCS-00	Installation of traffic light control - Junction 202B-2	4d 04-Apr-11	08-Apr-11	99d	Actual Work
5B-09-TRCK-00	Earthworks and Subbase	153d 23-May-11	31-Oct-11	167d	Actual Work

Code	Description	Start Date	End Date	Duration	Actual Work	Critical Remaining Work	Summary
5B-06-TRCK-40(3)	Additional Earthworks	17d 03-Jun-11	28-Jun-11	14d			
5B-06-TRCK-50	OLE Foundations - Drainage - Ducts	28d 28-Jun-11	05-Aug-11	38d			
5B-06-TRCK-60(3)	Additional Drainage	25d 08-Aug-11	12-Sep-11	14d			
5B-06-TRCK-70	Track laying (1200m) + mob	10d 12-Sep-11	20-Sep-11	10d			
5B-06-SIGN-80	wayside preparation for loops(0) and boxes(6)	30d 21-Sep-11	20-Sep-11	17d			
5B-06-TRCK-80	Fencing & Trackside Finishes	23d 28-Sep-11	05-Oct-11	13d			
Bankhead (exc.) to Edinburgh Park Station (inc.)		205d 03-Sep-10	27-Oct-11	323d			
Trackwork (790m)		16d 07-Sep-10	29-Jun-11	234d			
5B-06-TRCK-30	Earthworks & Subbase	15d 03-Sep-10	29-Sep-10	192d			
5B-06-TRCK-31(3)	Additional Earthworks	21d 24-Sep-10	22-Oct-10	192d			
5B-06-TRCK-50	OLE Foundations - Drainage	32d 25-Oct-10	08-Dec-10	192d			
5B-06-TRCK-51	Additional drainage	29d 09-Dec-10	01-Feb-11	192d			
5B-06-TRCK-40	Ducts and Bottom Ballast	16d 02-Feb-11	20-Feb-11	192d			
5B-06-TRCK-70	Track laying (790m)	20d 18-Apr-11	17-May-11	192d			
5B-06-SIGN-80	wayside preparation for loops(0) and boxes(4)	2d 16-May-11	17-May-11	307d			
5B-06-TRCK-78	Top Ballast (S2 2917 - S2 3526)	10d 18-May-11	01-Jun-11	247d			
5B-06-TRCK-80	Fencing and Trackside finishes	16d 02-Jun-11	23-Jun-11	247d			
Edinburgh Park Station Tram Stop		260d 02-Sep-10	27-Oct-11	323d			
5B-06-TRMS-80	wayside issued	0d 03-Sep-10		333d			
5B-06-SIG-80	Commissioning of SIG - Interlocking cubicle	2d 04-May-11	10-May-11	162d			
5B-06-TRMS-90	Civil Engineering and Builderworks	65d 18-May-11	18-Aug-11	162d			
5B-07-JNCS-60	Installation of traffic light control - Junction 203	4d 20-Jun-11	24-Jun-11	233d			
5B-06-JNCS-60	Installation of traffic light control - Junction 203A	4d 24-Jun-11	28-Jun-11	263d			
5B-06-TRMS-30	Access for visual inspection for E&M Tram Stop installation (05B)	0d 28-Jun-11		423d			
5B-06-TRMS-40	Deliver and Install Shelter	10d 14-Jul-11	27-Jul-11	162d			
5B-06-TRMS-31	Access for E&M Tram Stop installation (05B Edinburgh Park St...)	0d 26-Jul-11		314d			
5B-06-TRMS-45	Deliver and Install cubicle	10d 28-Jul-11	11-Aug-11	162d			
5B-06-TRMS-50	Install LV Power Supply and LV Power Equipment	25d 12-Aug-11	15-Sep-11	162d			
5B-06-TRMS-70	Install Telecom Equipment	20d 15-Sep-11	13-Oct-11	162d			
5B-06-TRMS-60	Install Station Control Equipment + AFC Equipment	25d 16-Sep-11	20-Oct-11	162d			
5B-06-TRMS-80	Package Test Tramstop	9d 21-Oct-11	27-Oct-11	162d			
Edinburgh Park Station (exc.) to Edinburgh Park Central (inc.)		307d 03-Sep-10	29-Nov-11	307d			
Edinburgh Park Central Tram Stop		307d 03-Sep-10	29-Nov-11	307d			
5B-07-TRMS-20	wayside issued	0d 03-Sep-10		333d			
5B-07-TRMS-80	Civil Engineering and Building Works	65d 31-May-11	30-Aug-11	178d			
5B-07-TRMS-30	Access for visual inspection for E&M Tram Stop installation (05B)	0d 01-Aug-11		406d			
5B-07-TRMS-40	Deliver and Install Shelter	10d 17-Aug-11	30-Aug-11	162d			
5B-07-TRMS-31	Access for E&M Tram Stop installation (05B Edinburgh Park)	0d 31-Aug-11		162d			
5B-07-TRMS-45	Deliver and Install cubicle	10d 31-Aug-11	13-Sep-11	178d			
5B-07-TRMS-50	Install LV Power Supply and LV Power Equipment	25d 14-Sep-11	18-Oct-11	178d			
5B-07-TRMS-70	Install Telecom Equipment	20d 19-Oct-11	15-Nov-11	178d			
5B-07-TRMS-60	Install Station Control Equipment + AFC Equipment	25d 19-Oct-11	22-Nov-11	178d			
5B-07-TRMS-80	Package Test Tramstop	9d 23-Nov-11	29-Nov-11	178d			
Trackwork (854m)		223d 04-Sep-10	16-Jun-11	283d			
5B-07-TRCK-30	Earthworks - Subbase	17d 04-Sep-10	19-Sep-10	178d			
5B-07-TRCK-01(3)	Commence Works	0d 03-Sep-10		178d			

Date	Revision	Checked	Approved
12-Sep-10	Revision 01 (100912)	BCB/MHE	BBC

Actual Work Critical Remaining Work Summary
 Remaining Work Milestone

Date	Revision	Checked	Approved
12-Sep-10	Revision 01 (100912)	BSC/MHE	BSC

Code	Description	Start	End	Duration	Actual Work	Critical Remaining Work	Summary
5B-07-TRCK-31(3)	Additional Earthworks	20-Sep-10	08-Sep-10	178d			
5B-07-TRCK-50	OLE Foundations - Drainage	09-Dec-10	18-Jan-11	178d			
5B-07-TRCK-51(3)	Additional Drainage	19-Jan-11	10-Feb-11	178d			
5B-07-TRCK-40	Track Formation - Ducts	11-Feb-11	04-Mar-11	178d			
5B-07-TRCK-70	Track laying (854m)	10-May-11	11-Jul-11	176d			
5B-07-SIGN-60	wayside preparation for loops(0) and boxes(4)	06-Jul-11	11-Jul-11	402d			
5B-07-TRCK-80	Track Finishes	12-Jul-11	05-Aug-11	226d			
5B-07-TRCK-81	Fencing	03-Aug-11	18-Aug-11	261d			
Edinburgh Park Station Bridge (S27)							
5B-07-S27-10	Installation of Rails	19-Mar-11	14-Apr-11	132d			
5B-07-S27-11	OLE Poles and Cabling	14-Apr-11	18-May-11	154d			
5B-07-S27-30	Bridge Finishes	03-Sep-10	19-Sep-10	268d			
MUDFA & Utilities Completions							
5C-06-UTL-10(2)	Edinburgh Park Central to Gyle	03-Sep-10	01-Sep-10	420d			
5C-03-UTL-10(3)	Gyle to Depot	03-Sep-10	03-Sep-10	120d			
E&M Installations							
5C-02-OHLE-40	Access for visual inspection for E&M wayside installation DEH	08-Feb-11	14-Apr-11	445d			
5C-02-ELEC-40	Access for visual inspection to cable pits for cable laying DEH	08-Mar-11		446d			
5C-02-OHLE-41	Access for E&M wayside installation DEH - GBN	07-Apr-11		265d			
5C-02-ELEC-70	Install Electrical Cables DEH - GBN	07-Apr-11	14-Apr-11	282d			
5C-02-ELEC-41	Access to cable pits for cable laying DEH - GBN	07-Apr-11		282d			
5C-06-ELEC-30	Access for visual inspection to cable pits for cable laying EDP	10-Aug-11		336d			
5C-06-OHLE-30	Access for visual inspection for E&M wayside installation EDP	10-Aug-11		336d			
5C-06-ELEC-31	Access to cable pits for cable laying EDP - GYL	09-Sep-11		167d			
5C-06/07-TELC-60	Install Fibre Optic Cables EPS - EDP - GYL	08-Sep-11	20-Sep-11	182d			
5C-06-SGNW-60	Install Signalling Wayside Equipment EDP - GYL	09-Sep-11	22-Sep-11	180d			
5C-06/07-OHLE-50	Installation of poles and building fixings -17 (52 4265 - 53 0590)	09-Sep-11	19-Sep-11	167d			
5C-06-OHLE-31	Access for E&M wayside installation EDP - GYL	09-Sep-11		148d			
5C-06-ELEC-60	Install Electrical Cables EDP - GYL	09-Sep-11	22-Sep-11	169d			
5C-06/07-OHLE-60	Overhead Catenary Line -17 (52 4265 - 53 0590)	20-Sep-11	11-Oct-11	187d			
5C-03-ELEC-30	Access for visual inspection to cable pits for cable laying GYL	01-Feb-12		224d			
5C-03-OHLE-30	Access for visual inspection for E&M wayside installation GYL	01-Feb-12		224d			
5C-01/03/06-TELC-60	Install Fibre Optic Cables EDP - GYL - DEH + DEP	15-Mar-12	22-Mar-12	53d			
5C-03-SGNW-60	Install Signalling Wayside Equipment GYL - DEH	02-Mar-12	14-Mar-12	61d			
5C-02/03/06-OHLE-50	Installation of poles and building fixings -18 (53 0456 - 53 1740)	02-Mar-12	19-Mar-12	56d			
5C-03-ELEC-31	Access to cable pits for cable laying GYL - DEH	02-Mar-12		53d			
5C-03-OHLE-31	Access for E&M wayside installation GYL - DEH	02-Mar-12		54d			
5C-03-ELEC-60	Install Electrical Cables GYL - DEH	02-Mar-12	14-Mar-12	87d			
5C-02-SGNW-70	Install Signalling Wayside Equipment DEH - GBN	15-Mar-12	22-Mar-12	61d			
5C-02/03/06-OHLE-60	Overhead Catenary Line -18 (53 0456 - 53 1740)	20-Mar-12	01-May-12	349d			
5C-02/03-TELC-60	Install Fibre Optic Cables GYL - DEH - GBN	23-Mar-12	03-Apr-12	65d			
Edinburgh Park (excl) to Gyle Centre (incl)							
5C-02/03-TELC-60	Install Fibre Optic Cables GYL - DEH - GBN	03-Sep-10	20-Jun-12	231d			
Trackwork (760m)							
5C-02/03-TELC-60	Install Fibre Optic Cables GYL - DEH - GBN	04-Oct-10	18-Sep-11	169d			

Item ID	Description	Start Date	End Date	Duration	Actual Work	Critical Remaining Work	Summary
5C-06-TRCK-30	Earthworks and Subbase	20d 04-Oct-10	28-Oct-10	9d			
5C-06-TRCK-25	Commence Works	0d 04-Oct-10		0d			
5C-06-TRCK-31(3)	Additional Earthworks	58d 01-Nov-10	01-Feb-11	99d			
5C-06-TRCK-50	OLE Foundations - Drainage	30d 02-Feb-11	15-Mar-11	49d			
5C-06-TRCK-60	Additional Drainage	40d 16-Mar-11	12-May-11	59d			
5C-06-TRCK-40	Track Formation and Ducts	18d 13-May-11	08-Jun-11	26d			
5C-06-TRCK-90	Road Crossings + mob (track laying activities only)	23d 07-Jun-11	07-Jul-11	31d			
5C-06-JNCS-70	Installation of traffic light control - Junction 205	7d 28-Jun-11	08-Jul-11	11d			
5C-06-TRCK-70	Track laying (760m)	20d 05-Jul-11	05-Aug-11	31d			
5C-06-JNCS-60	Installation of traffic light control - Junction 204	8d 08-Jul-11	15-Jul-11	7d			
5C-06-SIGN-60	wayside preparation for loops(1) and boxes(15)	9d 25-Jul-11	05-Aug-11	11d			
5C-06-TRCK-80	Track Finishes	24d 05-Aug-11	08-Sep-11	44d			
5C-06-TRCK-81	Fencing	16d 09-Sep-11	30-Sep-11	14d			
5C-06-TRCK-81	Fencing	16d 09-Sep-11	30-Sep-11	14d			
5C-06-TRMS-20	wayleave issued	0d 03-Sep-10		0d			
5C-06-TRMS-90	Civil Engineering and Building Works	65d 06-Aug-11	04-Nov-11	99d			
5C-06-TRMS-30	Access for visual inspection for E&M Tram Stop installation (05C Gyle)	0d 15-Sep-11		0d			
5C-06-TRMS-40	Deliver and install Shelter	10d 03-Oct-11	14-Oct-11	11d			
5C-06-TRMS-31	Access for E&M Tram Stop installation (05C Gyle)	0d 17-Oct-11		0d			
5C-06-TRMS-45	Deliver and install cubicle	10d 17-Oct-11	28-Oct-11	11d			
5C-06-TRMS-50	Install LV Power Supply and LV Power Equipment	26d 31-Oct-11	05-Dec-11	35d			
5C-06-TRMS-70	Install Telecon Equipment	20d 06-Dec-11	18-Jan-12	43d			
5C-06-TRMS-60	Install Station Control Equipment + AFC Equipment	25d 08-Dec-11	23-Jan-12	46d			
5C-06-TRMS-80	Package Test Tramstop	5d 24-Jan-12	30-Jan-12	6d			
5C-06-TRMS-80	Package Test Tramstop	5d 24-Jan-12	30-Jan-12	6d			
5C-06-W16-113(3)	Temporary Works	15d 11-Oct-10	01-Nov-10	16d			
5C-06-W16-110(3)	Commence Works	0d 11-Oct-10		0d			
5C-06-W16-112(3)	Excavation	16d 02-Nov-10	25-Nov-10	19d			
5C-06-W16-113(3)	Base Construction	24d 18-Nov-10	20-Dec-10	26d			
5C-06-W16-114(3)	Wall Construction	24d 24-Nov-10	11-Jan-11	49d			
5C-06-W16-115(3)	Drainage & Backfill	11d 12-Jan-11	25-Jan-11	13d			
5C-06-W16-116(3)	Finishes	13d 27-Jan-11	14-Feb-11	18d			
5C-06-W16-116(3)	Finishes	13d 27-Jan-11	14-Feb-11	18d			
5C-03-W28-90(3)10	Deck Construction	17d 03-Sep-10	17-Sep-10	14d			
5C-03-W28-90(3)20	North Portal	17d 03-Sep-10	27-Sep-10	24d			
5C-03-W28-90(3)30	Finishes	87d 20-Sep-10	25-Oct-10	65d			
5C-03-W28-92(3)10	Deck Construction	30d 03-Sep-10	14-Oct-10	44d			
5C-03-W28-92(3)20	South Portal	55d 01-Oct-10	17-Dec-10	77d			
5C-03-W28-92(3)30	Finishes	73d 15-Oct-10	09-Feb-11	114d			
5C-03-W28-91(3)10	Deck Construction	78d 10-Feb-11	02-Jun-11	114d			
5C-03-W28-91(3)20	Temporary Works	11d 17-Mar-11	31-Mar-11	14d			
5C-03-W28-91(3)30	Reinstate Retaining Wall	6d 19-May-11	28-May-11	9d			

Date	Revision	Checked	Approved
12-Sep-10	Revision 01 (100912)	SCS/MRE	BSC

Legend	Description
[Green Bar]	Actual Work
[Red Bar]	Critical Remaining Work
[Blue Bar]	Summary
[Red Arrow]	Remaining Work
[Blue Diamond]	Milestone