









Activity ID	Activity Name	Planned Duration	Start	Finish	Total Float	2012												2013												2014												
						Sep	Oct	Nov	Dec	Jan	Feb	Mar	Apr	May	Jun	Jul	Aug	Sep	Oct	Nov	Dec	Jan	Feb	Mar	Apr	May	Jun	Jul	Aug	Sep	Oct	Nov	Dec	Jan	Feb	Mar	Apr	May	Jun			
<b>Approved Changes</b>			289d	10-Oct-11	03-Dec-12	-26d																																				
<b>E &amp; M Installations</b>			135d	07-Feb-13	14-Aug-13	-23d																																				
<b>Newhaven Road (inc.) to Ocean Terminal (exc.) 1A4</b>			730d	15-Jan-10	04-Mar-13	-23d																																				
<b>Ch 160-265</b>			77d	06-Jul-12	22-Oct-12	-161d																																				
<b>Ch 0-160</b>			64d	12-Oct-11	25-Jan-12	-29d																																				

- Actual Work
- Remaining Work
- Critical Remaining Work
- Baseline Milestone
- Milestone
- Summary



**Edinburgh Tram Project**

**Transport Scotland Full tie Programme Period 07 - OFRS 10Feb14**

Page 3 of 28



































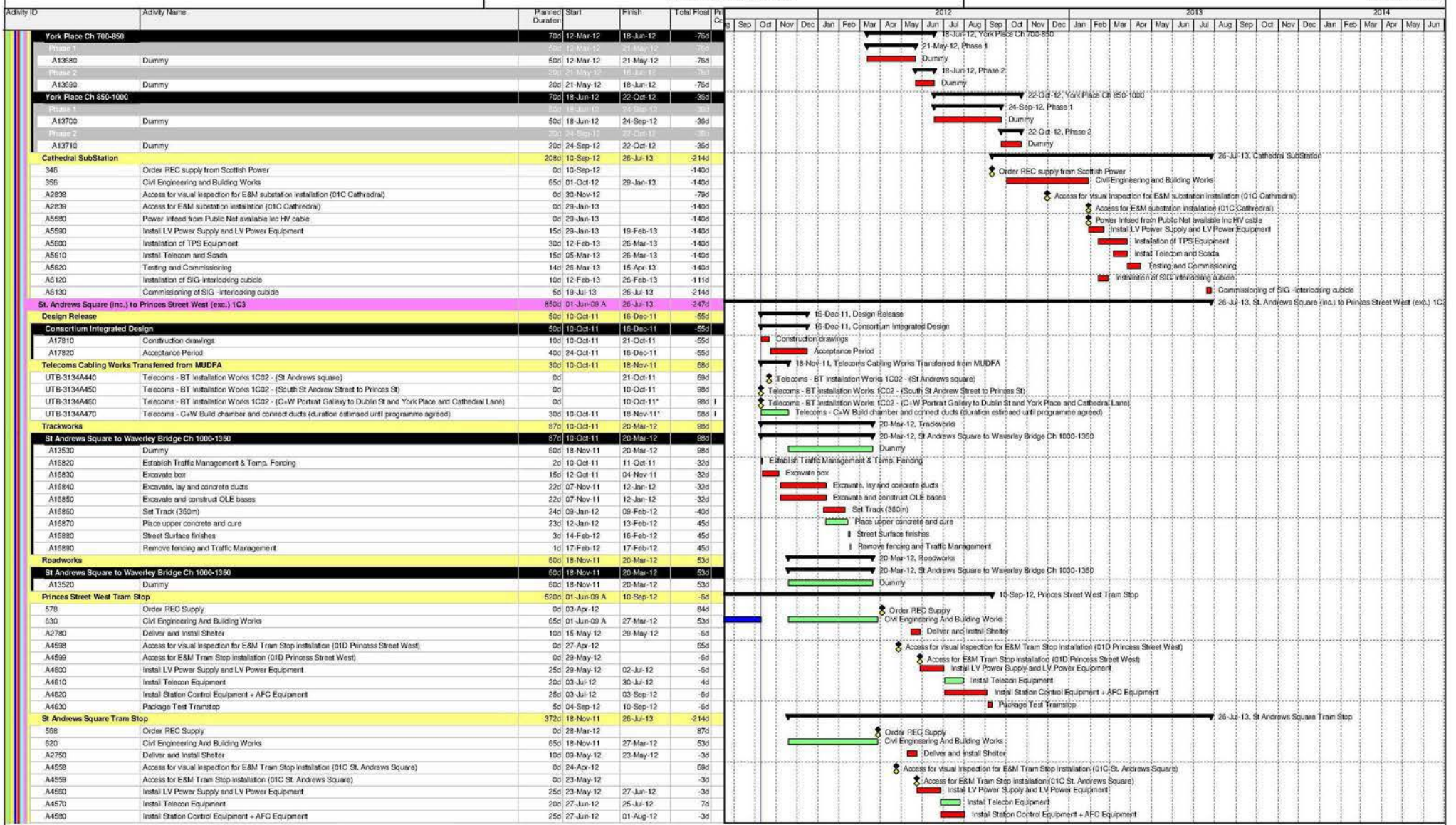












**Legend:**

- █ Actual Work
- █ Remaining Work
- █ Critical Remaining Work
- ◆ Baseline Milestone
- ◆ Milestone
- ▬ Summary

**Edinburgh Tram Project**

**Transport Scotland Full tie Programme Period 07 - OFRS 10Feb14**

Page 14 of 28

























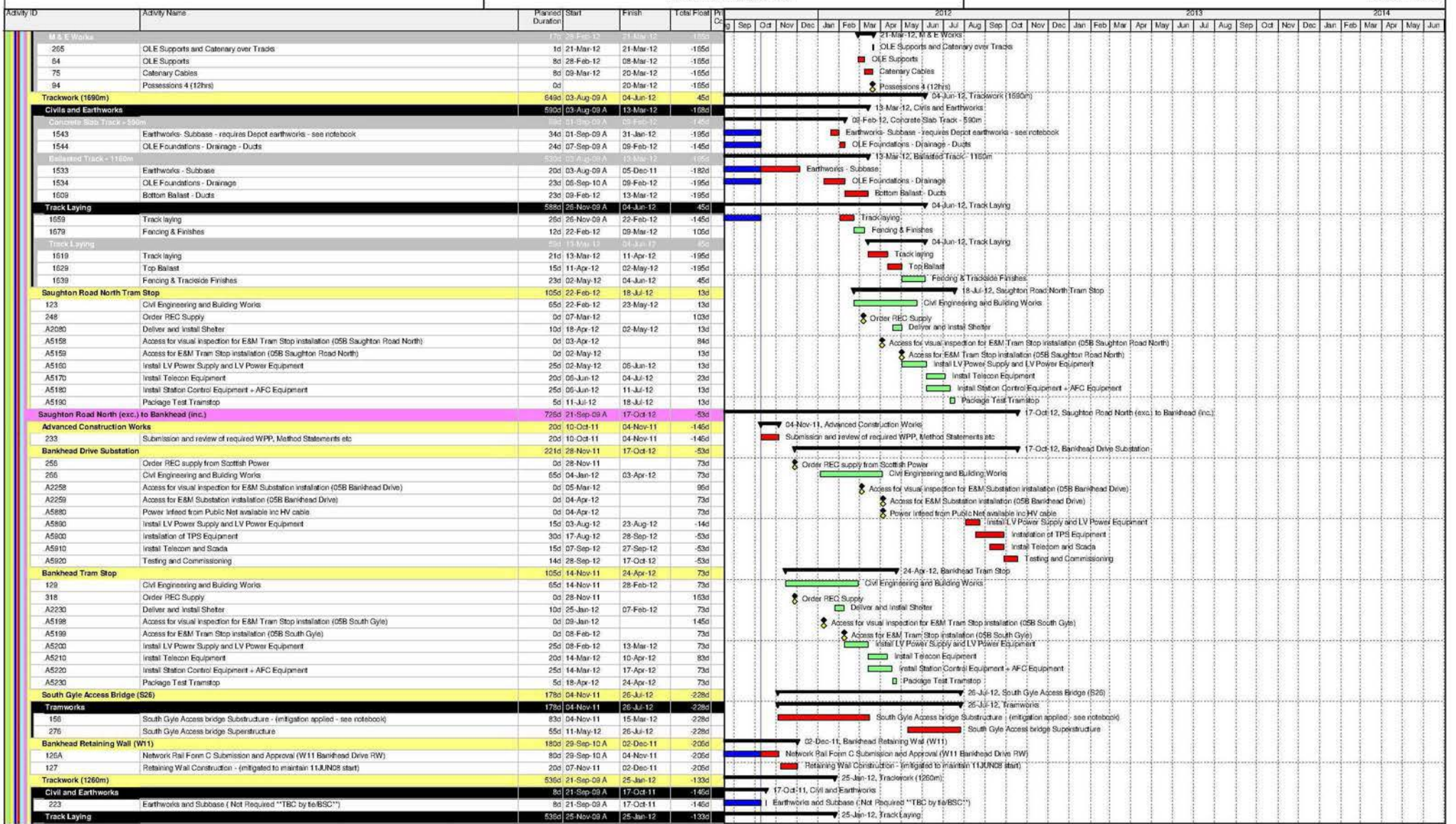












- █ Actual Work
- █ Remaining Work
- █ Critical Remaining Work
- ◆ Baseline Milestone
- ◆ Milestone
- ▬ Summary



**Edinburgh Tram Project**

**Transport Scotland Full tie Programme Period 07 - OFRS 10Feb14**

Page 23 of 28









Activity ID	Activity Name	Planned Duration	Start	Finish	Total Float	M C	2012												2013												2014											
							Sep	Oct	Nov	Dec	Jan	Feb	Mar	Apr	May	Jun	Jul	Aug	Sep	Oct	Nov	Dec	Jan	Feb	Mar	Apr	May	Jun	Jul	Aug	Sep	Oct	Nov	Dec	Jan	Feb	Mar	Apr	May	Jun		
<b>Approved Changes</b>							<ul style="list-style-type: none"> <li>18-Nov-11, Approved Changes</li> <li>COP 204 Boundary Hedge between Gogarburn Tramstop &amp; Depot</li> <li>COP215a COP215a Stage 1 design change - SC DEC Comments for Locheide Av up to Adoptable Standard</li> <li>COP465 COP465 Protection of Existing Services at Edinburgh Park</li> </ul>																																			
<b>E &amp; M Installations</b>							<ul style="list-style-type: none"> <li>07-Jan-13, E &amp; M Installations</li> <li>07-Jan-13, E &amp; M Edinburgh Park to Depot</li> <li>30-Jul-12, E &amp; M Depot to Gogarburn</li> <li>11-Sep-12, Edinburgh Park (exc.) to Gyle Centre (inc.)</li> <li>12-Jun-12, Trackwork (760m)</li> <li>12-Jun-12, Track Laying</li> <li>11-Sep-12, Gyle Centre Tram Stop</li> <li>02-Aug-12, Gyle Centre (exc.) to Depot Stop (inc.)</li> <li>02-Aug-12, Trackwork (562m)</li> </ul>																																			
<b>E &amp; M Edinburgh Park to Depot</b>							<ul style="list-style-type: none"> <li>A4163 Access for visual inspection for E&amp;M wayside installation (OSC)</li> <li>A4164 Access for E&amp;M wayside installation (OSC)</li> <li>A4165 Installation of poles and building fixings</li> <li>A4170 Overhead Catenary Line</li> <li>A4178 Access for visual inspection to cable pits for cable laying (OSC)</li> <li>A4179 Access to cable pits for cable laying (OSC)</li> <li>A4180 Install Electrical Cables</li> <li>A4190 Install Fibre Optic Cables</li> <li>A4200 Install Signalling Wayside Equipment</li> </ul>																																			
<b>E &amp; M Depot to Gogarburn</b>							<ul style="list-style-type: none"> <li>A16900 Access for visual inspection for E&amp;M wayside installation (OSC)</li> <li>A16910 Access for E&amp;M wayside installation (OSC)</li> <li>A16920 Installation of poles and building fixings</li> <li>A16930 Overhead Catenary Line</li> <li>A16940 Access for visual inspection to cable pits for cable laying (OSC)</li> <li>A16950 Access to cable pits for cable laying (OSC)</li> <li>A16960 Install Electrical Cables</li> <li>A16970 Install Fibre Optic Cables</li> <li>A16980 Install Signalling Wayside Equipment</li> </ul>																																			
<b>Edinburgh Park (exc.) to Gyle Centre (inc.)</b>							<ul style="list-style-type: none"> <li>Design Release</li> <li>SDS109590 Issue For Construction Drawings - Gyle Tramstop</li> <li>Consortium Integrated Design</li> <li>A18030 Construction drawings</li> <li>A18040 Acceptance Period</li> <li>Trackwork (760m)</li> <li>Civil and Earthworks</li> <li>1 Track Formation and Ducts</li> <li>183 OLE Foundations - Drainage</li> <li>220 Complete Earthworks and Subbase</li> <li>Track Laying</li> <li>789 Track laying Edinburgh Park to Gyle</li> <li>799 Track Finishes</li> <li>809 Road Crossings</li> <li>819 Fencing</li> <li>Gyle Centre Tram Stop</li> <li>141 Civil Engineering and Building Works</li> <li>298 Order REC Supply</li> <li>A2170 Deliver and Install Shelter</li> <li>A5318 Access for visual inspection for E&amp;M Tram Stop installation (OSC Gyle)</li> <li>A5319 Access for E&amp;M Tram Stop installation (OSC Gyle)</li> <li>A5320 Install LV Power Supply and LV Power Equipment</li> <li>A5330 Install Telecom Equipment</li> <li>A5340 Install Station Control Equipment + AFC Equipment</li> <li>A5350 Package Test Tramstop</li> <li>Gyle Centre Tram Stop Retaining Wall (W16)</li> <li>139 Gyle TS Retaining Wall Construction</li> </ul>																																			
<b>Gyle Centre (exc.) to Depot Stop (inc.)</b>							<ul style="list-style-type: none"> <li>Design Release</li> <li>SDS104320 Issue For Construction Drawings and MX Model Edinburgh Gateway</li> <li>SDS105910 Issue For Construction Drawings - Edinburgh Gateway RW</li> <li>SDS109550 Issue For Construction Drawings - Revised Drainage at Gogarburn Lodge</li> <li>A8 Underpass (W28)</li> <li>Tramworks</li> <li>529 Phase 3</li> <li>549 Subway Construction</li> <li>Trackwork (562m)</li> <li>Civil and Earthworks</li> <li>1079 Drainage and OLE Foundations</li> </ul>																																			

- █ Actual Work
- █ Remaining Work
- █ Critical Remaining Work
- ◆ Baseline Milestone
- ◆ Milestone
- ▬ Summary



**Edinburgh Tram Project**  
 Transport Scotland Full tie Programme Period 07 - OFRS 10Feb14











