



**THIS IS SCHEDULE PART 15 REFERRED TO IN THE
FOREGOING AGREEMENT BETWEEN TIE AND THE
INFRACO**

SCHEDULE PART 15

PROGRAMME

The Programme consists of the following documents:

- Programme following mediation on 8 – 12 March 2011 (110908) Revision 4
- Narrative to Programme following mediation on 8 – 12 March 2011 (110908) Revision 4
- Consents Programme (derived from the SDS Design Programme V75 – ULE90130-SW-PRO-00010 V75 Remaining Activities)

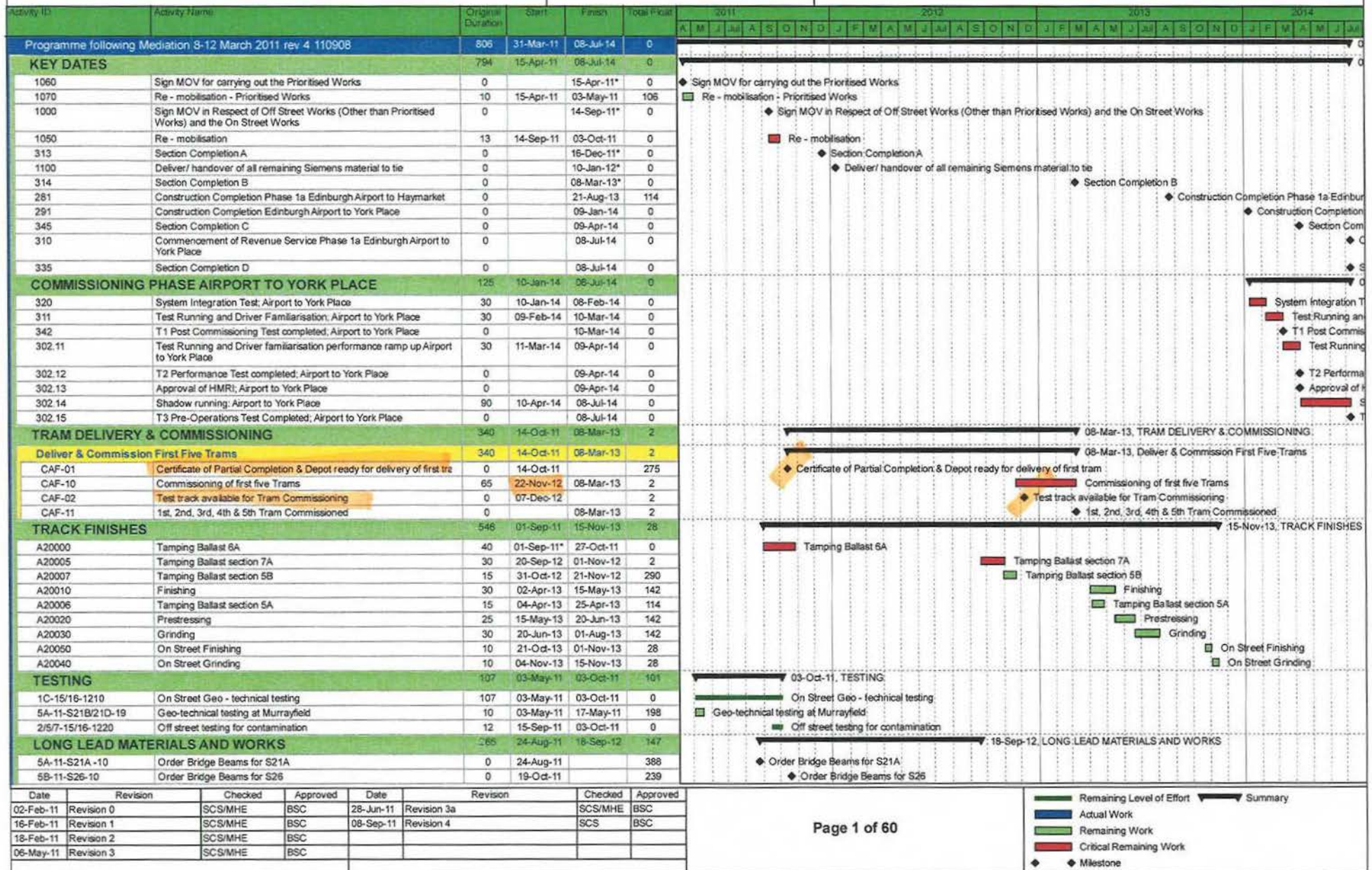
END

Programme following Mediation
on 8 - 12 March 2011 (110908)

EDINBURGH TRAM NETWORK



08-Sep-11 10:13

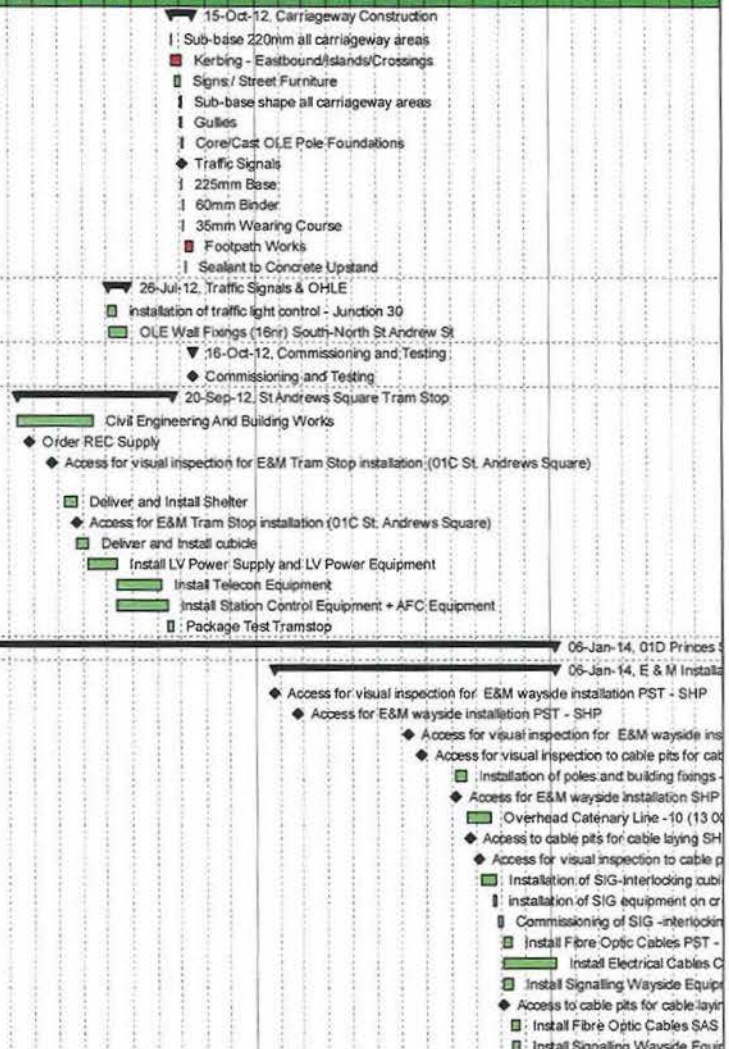


CEC02085650_0003

■ Remaining Level of Effort ■ Actual Work ■ Remaining Work ■ Critical Remaining Work ◆ Milestone

▶ Summary

Activity ID	Activity Name	Original Duration	Start	Finish	Total Float	2011												2012												2013												2014															
						A	M	J	J	A	S	O	N	D	J	F	M	A	M	J	J	A	S	O	N	D	J	F	M	A	M	J	J	A	S	O	N	D	J	F	M	A	M	J	J	A	S	O	N	D							
Carriageway Construction						18	20-Sep-12	15-Oct-12	422																																																
1C-16B-SAS4-328	Sub-base 220mm all carriageway areas	1	20-Sep-12	20-Sep-12	0																																																				
1C-16B-SAS4-309	Kerbing - Eastbound/Islands/Crossings	8	21-Sep-12	02-Oct-12	0																																																				
1C-16B-SAS4-332	Signs / Street Furniture	5	25-Sep-12	01-Oct-12	6																																																				
1C-16B-SAS4-303	Sub-base shape all carriageway areas	3	01-Oct-12	03-Oct-12	387																																																				
1C-16B-SAS4-331	Gullies	2	02-Oct-12	03-Oct-12	387																																																				
1C-16B-SAS4-450	Core/Cast OLE Pole Foundations	3	03-Oct-12	05-Oct-12	0																																																				
1C-16B-SAS4-334	Traffic Signals	0	03-Oct-12		6																																																				
1C-16B-SAS4-336	225mm Base	1	03-Oct-12	03-Oct-12	5																																																				
1C-16B-SAS4-337	60mm Binder	1	04-Oct-12	04-Oct-12	5																																																				
1C-16B-SAS4-338	35mm Wearing Course	1	05-Oct-12	05-Oct-12	5																																																				
1C-16B-SAS4-365	Footpath Works	6	08-Oct-12	15-Oct-12	0																																																				
1C-16B-SAS4-319	Sealant to Concrete Upstand	1	08-Oct-12	08-Oct-12	5																																																				
Traffic Signals & OHLE						17	04-Jul-12	26-Jul-12	478																																																
1C-16A-JNCS-60	Installation of traffic light control - Junction 30	8	04-Jul-12	13-Jul-12	487																																																				
1C-16A-SAS1-233	OLE Wall Fixings (16nr) South-North St Andrew St	16	05-Jul-12	26-Jul-12	416																																																				
Commissioning and Testing						0	16-Oct-12	16-Oct-12	0																																																
1C-16-SAS-323	Commissioning and Testing	0	16-Oct-12		0																																																				
St Andrews Square Tram Stop						134	13-Mar-12	20-Sep-12	439																																																
1C-16-TRMS-90	Civil Engineering And Building Works	65	13-Mar-12	14-Jun-12	396																																																				
1C-16-TRMS-20	Order REC Supply	0	27-Mar-12		563																																																				
1C-16-TRMS-30	Access for visual inspection for E&M Tram Stop installation (01C St. Andrews Square)	0	23-Apr-12		544																																																				
1C-16-TRMS-40	Deliver and Install Shelter	10	10-May-12	23-May-12	396																																																				
1C-16-TRMS-31	Access for E&M Tram Stop installation (01C St. Andrews Square)	0	24-May-12		468																																																				
1C-16-TRMS-45	Deliver and Install outside	10	24-May-12	07-Jun-12	396																																																				
1C-16-TRMS-50	Install LV Power Supply and LV Power Equipment	25	08-Jun-12	12-Jul-12	396																																																				
1C-16-TRMS-70	Install Telecon Equipment	20	13-Jul-12	06-Sep-12	406																																																				
1C-16-TRMS-60	Install Station Control Equipment + AFC Equipment	25	13-Jul-12	13-Sep-12	396																																																				
1C-16-TRMS-80	Package Test Tramstop	5	14-Sep-12	20-Sep-12	439																																																				
01D Princes Street (inc.) to Haymarket (exc.)						678	31-Mar-11	06-Jan-14	195																																																
E & M Installation						234	23-Jan-13	06-Jan-14	195																																																
1D-15-OHLE-30	Access for visual inspection for E&M wayside installation PST - SHP	0	23-Jan-13		385																																																				
1D-15-OHLE-31	Access for E&M wayside installation PST - SHP	0	22-Feb-13		207																																																				
1D-14-OHLE-30	Access for visual inspection for E&M wayside installation SHP - HAY	0	09-Jul-13		269																																																				
1D-14-ELEC-30	Access for visual inspection to cable pits for cable laying SHP - HAY	0	25-Jul-13		257																																																				
1D-14/15-OHLE-50(3)	Installation of poles and building fixings -10 (13 0037 - 20 0022)	10	05-Sep-13	18-Sep-13	91																																																				
1D-14-OHLE-31	Access for E&M wayside installation SHP - HAY	0	05-Sep-13		91																																																				
1D-14/15-OHLE-60(3)	Overhead Catenary Line -10 (13 0037 - 20 0022 + 13 0731 - 13 08)	22	19-Sep-13	18-Oct-13	91																																																				
1D-14-ELEC-31	Access to cable pits for cable laying SHP - HAY	0	23-Sep-13		206																																																				
1D-15-ELEC-30	Access for visual inspection to cable pits for cable laying PST - SHP	0	03-Oct-13		227																																																				
1D-14-SIGN-40	Installation of SIG-interlocking outside SHP	15	07-Oct-13	25-Oct-13	206																																																				
1D-14-SIGN-90	Installation of SIG equipment on crossover SHP	5	21-Oct-13	25-Oct-13	206																																																				
1D-14-SIGN-80	Commissioning of SIG -interlocking outside SHP	5	28-Oct-13	01-Nov-13	206																																																				
1D-14/15-TELC-70	Install Fibre Optic Cables PST - SHP - HAY	6	04-Nov-13	13-Nov-13	191																																																				
1D-13/17-ELEC-60	Install Electrical Cables CAE - HTE	23	04-Nov-13	06-Jan-14	183																																																				
1D-15-SGNW-60	Install Signalling Wayside Equipment PST - SHP	9	04-Nov-13	14-Nov-13	191																																																				
1D-15-ELEC-31	Access to cable pits for cable laying PST - SHP	0	04-Nov-13		183																																																				
1D-15/16-TELC-60	Install Fibre Optic Cables SAS - PST - SHP	7	14-Nov-13	22-Nov-13	191																																																				
1D-14-SGNW-60	Install Signalling Wayside Equipment SHP - HAY	6	15-Nov-13	22-Nov-13	191																																																				



Date	Revision	Checked	Approved	Date	Revision	Checked	Approved
02-Feb-11	Revision 0	SCS/MHE	BSC	28-Jun-11	Revision 3a	SCS/MHE	BSC
16-Feb-11	Revision 1	SCS/MHE	BSC	08-Sep-11	Revision 4	SCS	BSC
18-Feb-11	Revision 2	SCS/MHE	BSC				
06-May-11	Revision 3	SCS/MHE	BSC				

- Remaining Level of Effort
- Actual Work
- Remaining Work
- Critical Remaining Work
- Milestone
- Summary

