

Tree Proposals



01



02



03



04



05



06

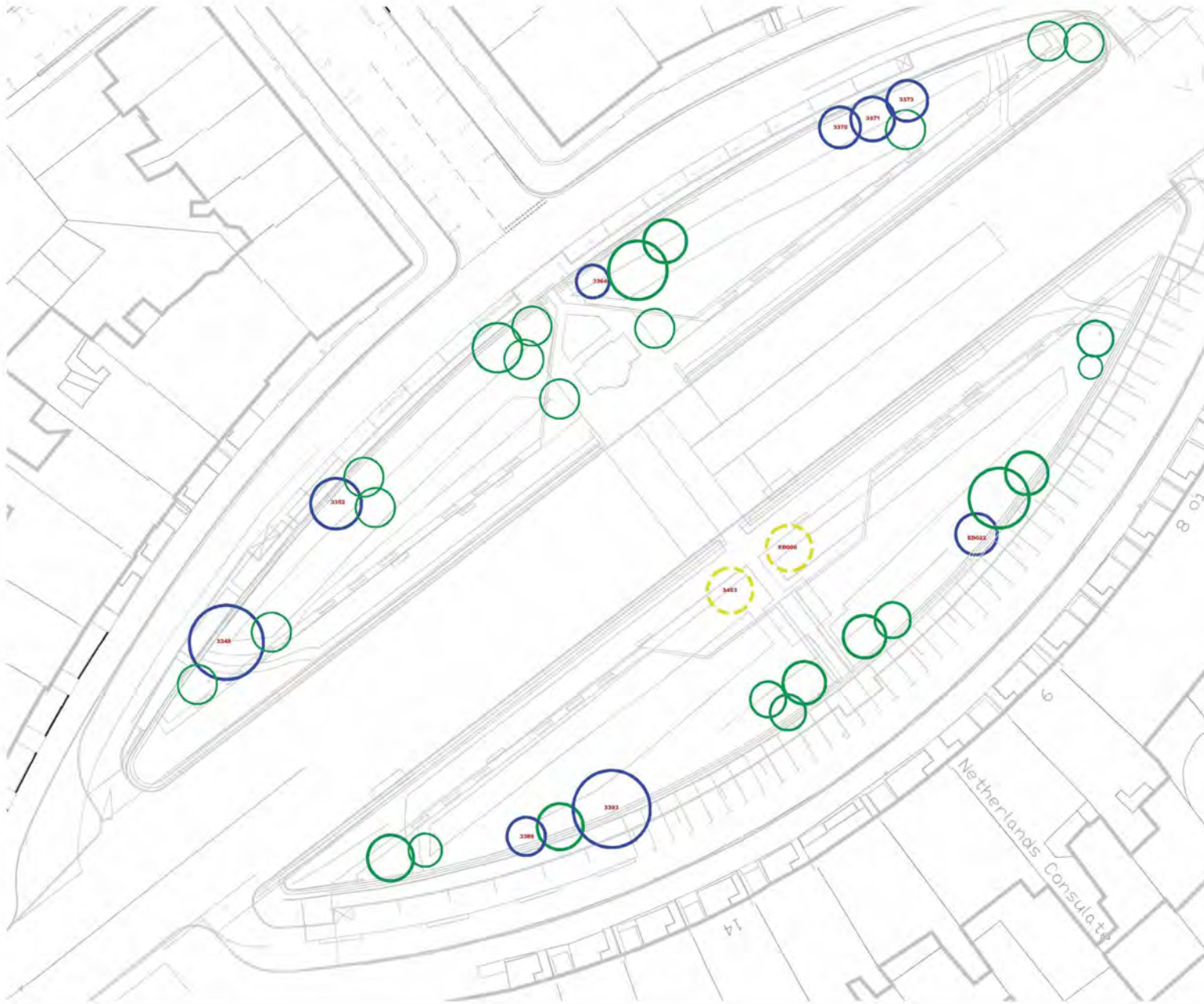





07

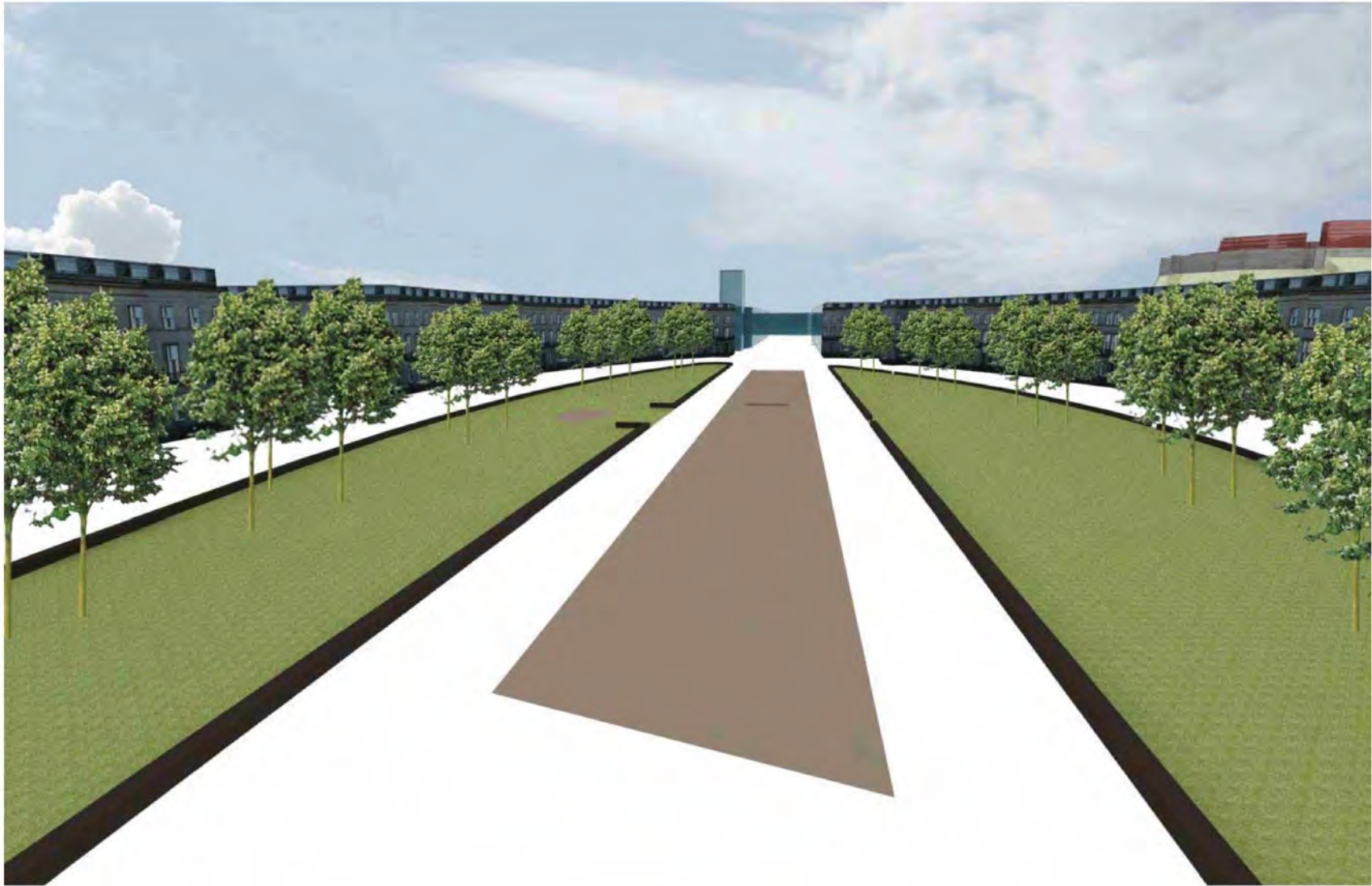




Proposal 1 : Tree clusters dictated by retained Trees



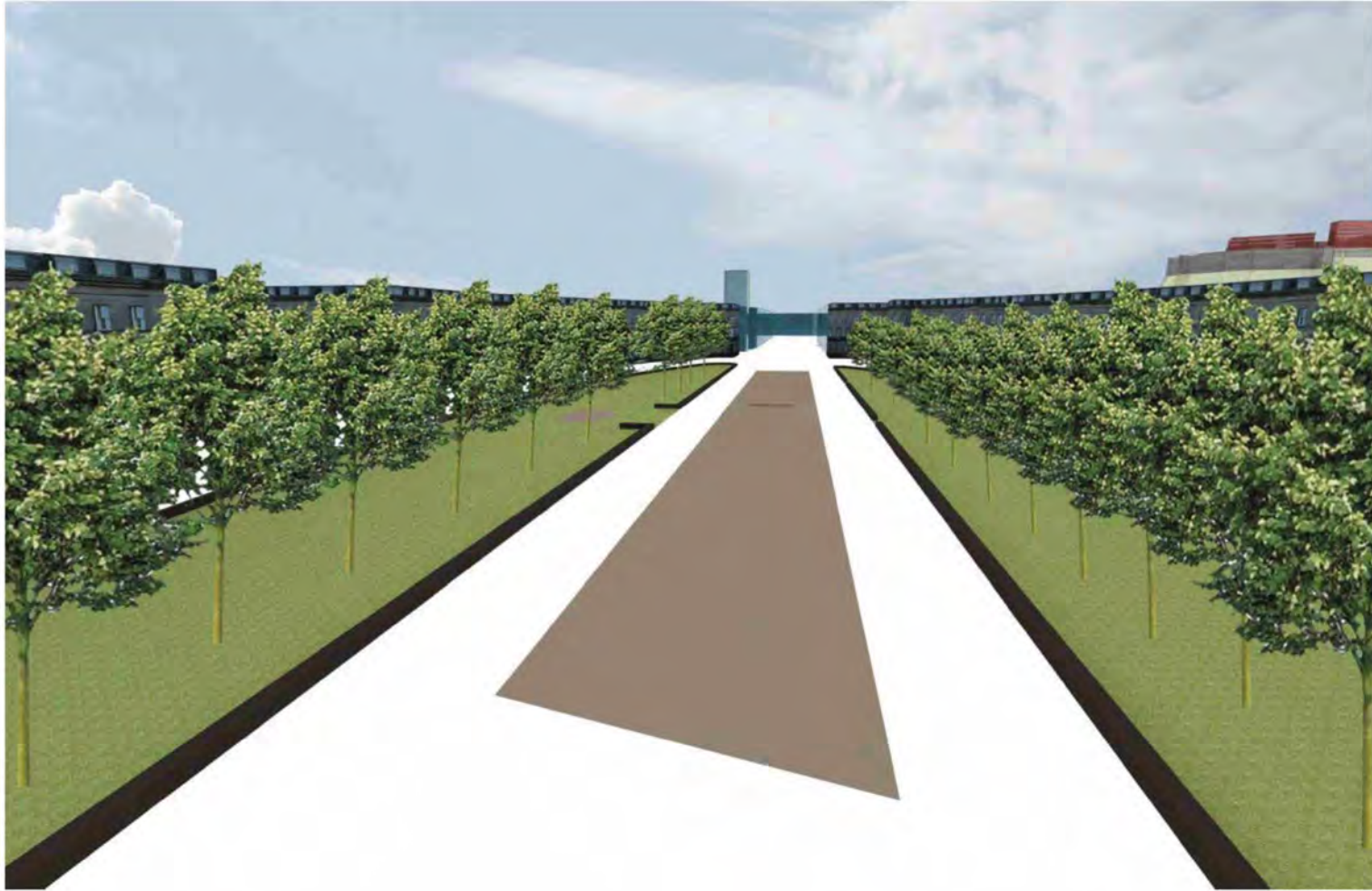
-  Retained Trees
-  Repositioned Trees
-  Proposed Tree

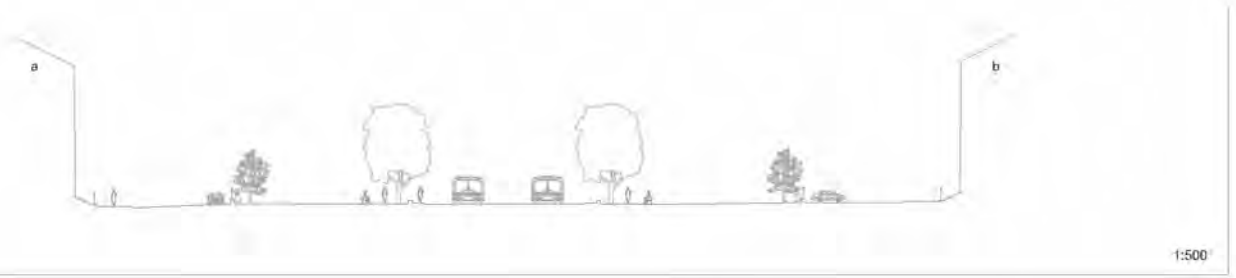


Proposal 2 : Tree Avenue



-  Relocated Trees
-  Proposed Tree

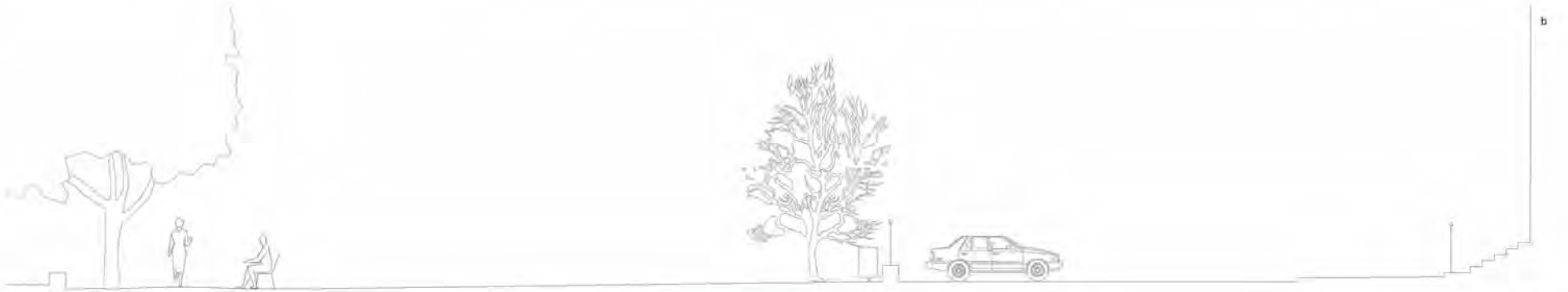




1:500



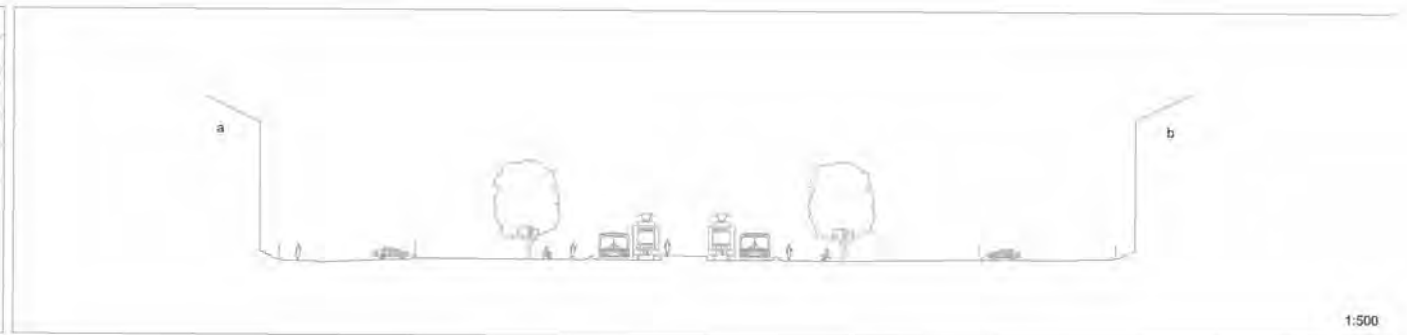
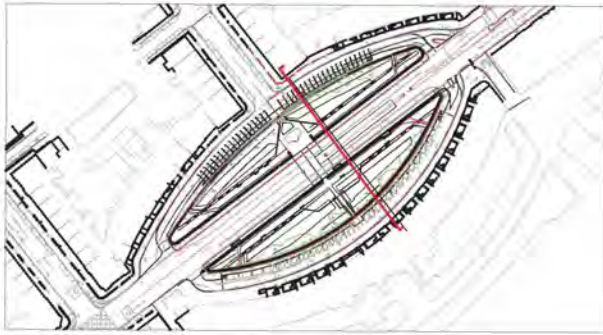
1:100



1:100

Edinburgh/Atholl Crescent - Existing Parking - Cross Section

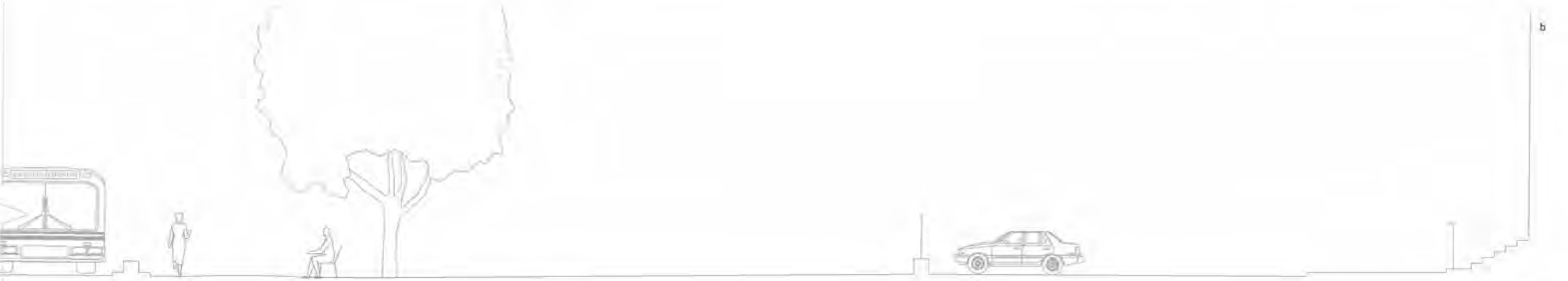
Copyright of EDAW plc. All Dimensions are to be checked not scaled. EDAW plc accept no liability for any expense loss or nature and however arising from any variation made to this drawing or in the execution of the work to which it relates without to them and their approval obtained.



1:500



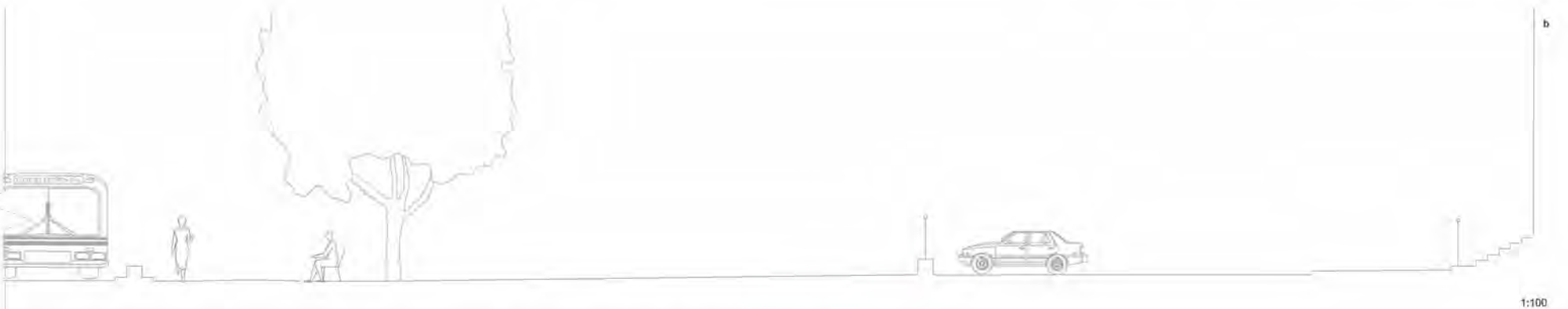
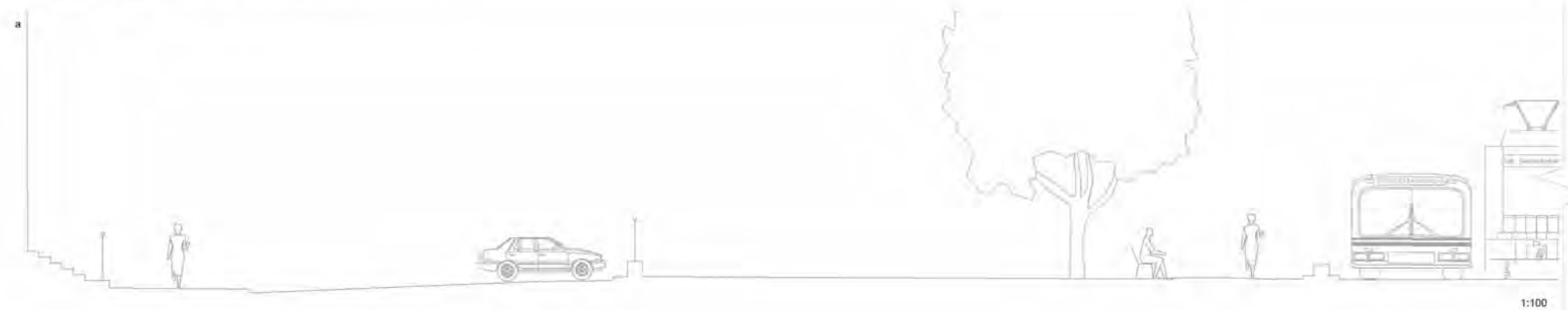
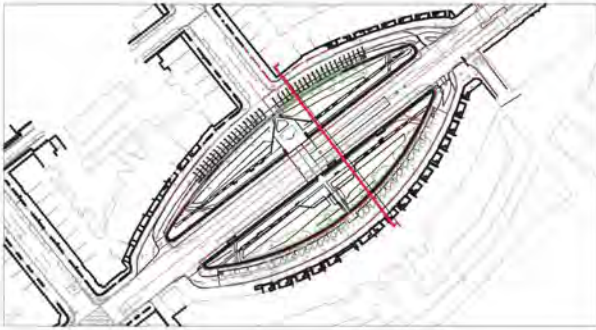
1:100



1:100

Coates/Atholl Crescent - Echelon Parking Option - Cross Section

This drawing is the copyright of EDAW plc. All Dimensions are to be checked not scaled. EDAW plc accept no liability for any expense loss or damage of whatsoever nature and however arising from any variation made to this drawing or in the execution of the work to which it relates which has not been referred to them and their approval obtained.



Coates/Atholl Crescent - Parallel Parking Option - Cross Section

This drawing is the copyright of EDAW plc. All Dimensions are to be checked not scaled. EDAW plc accepts no liability for any expense, loss or damage of whatsoever nature and however arising from any variation made to this drawing or in the execution of the work to which it relates which has not been referred to them and their approval obtained.

COATES CRESCENT STREETScape STUDY Existing Survey



Street Elements

Light Green	Light Purple
Yellow	Orange
Small Wholly Beech	Red
Small Tree	Light Blue
Tree	Dark Green
Blue	Light Green
Orange	Red
Medium Tree	Dark Blue
Light Green	Light Green

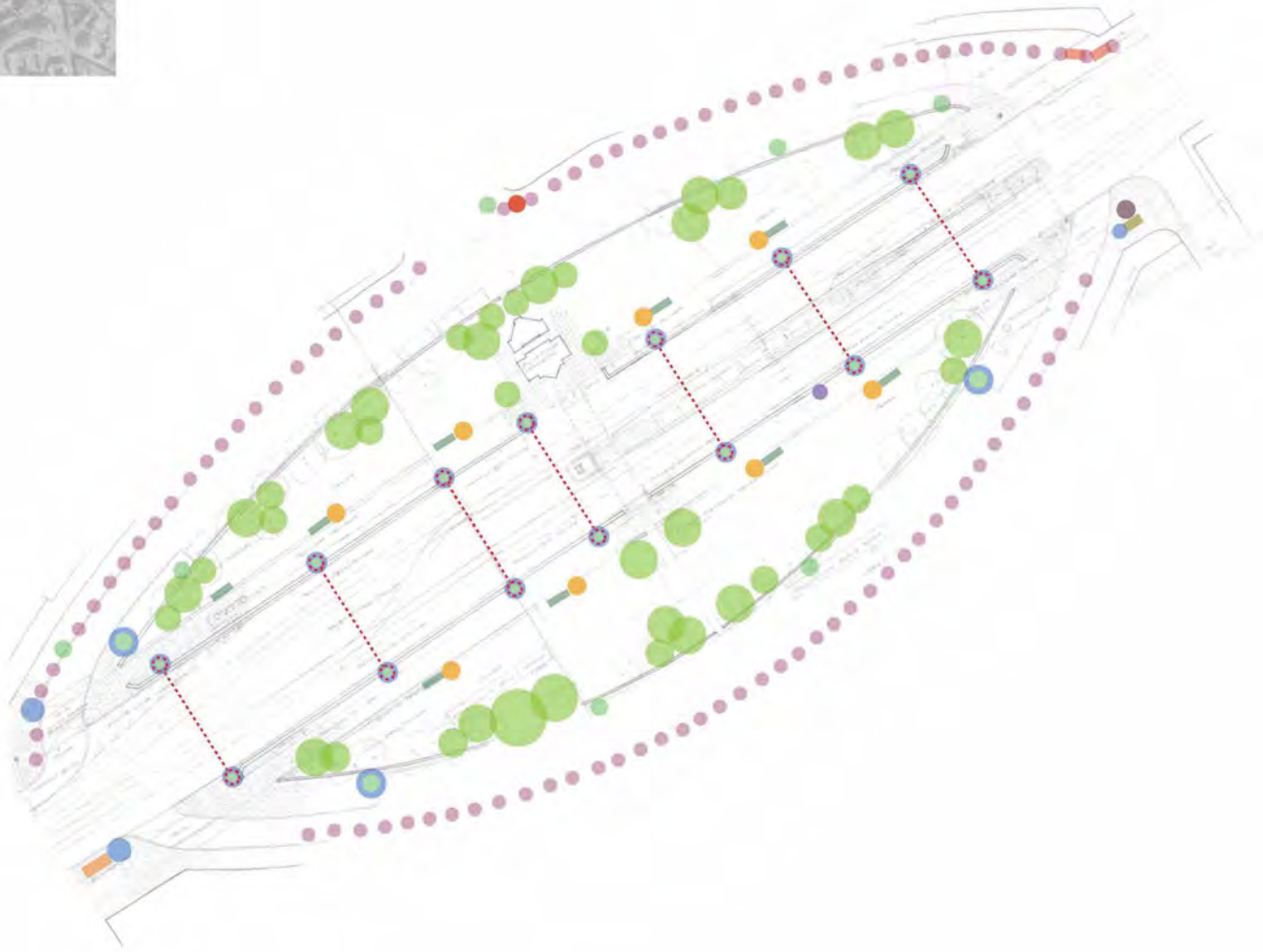
COATES CRESCENT STREETSCAPE STUDY Existing Survey plus Tram



Street Elements

Electric	Tram stop
Small Wheely Bin	Bus stop
Small wheely bin	Bus shelter
Tree	Tree
Sign	Tram stop
Bin	Bus stop
Tram stop	Bike stand
Tram stop	Tram stop

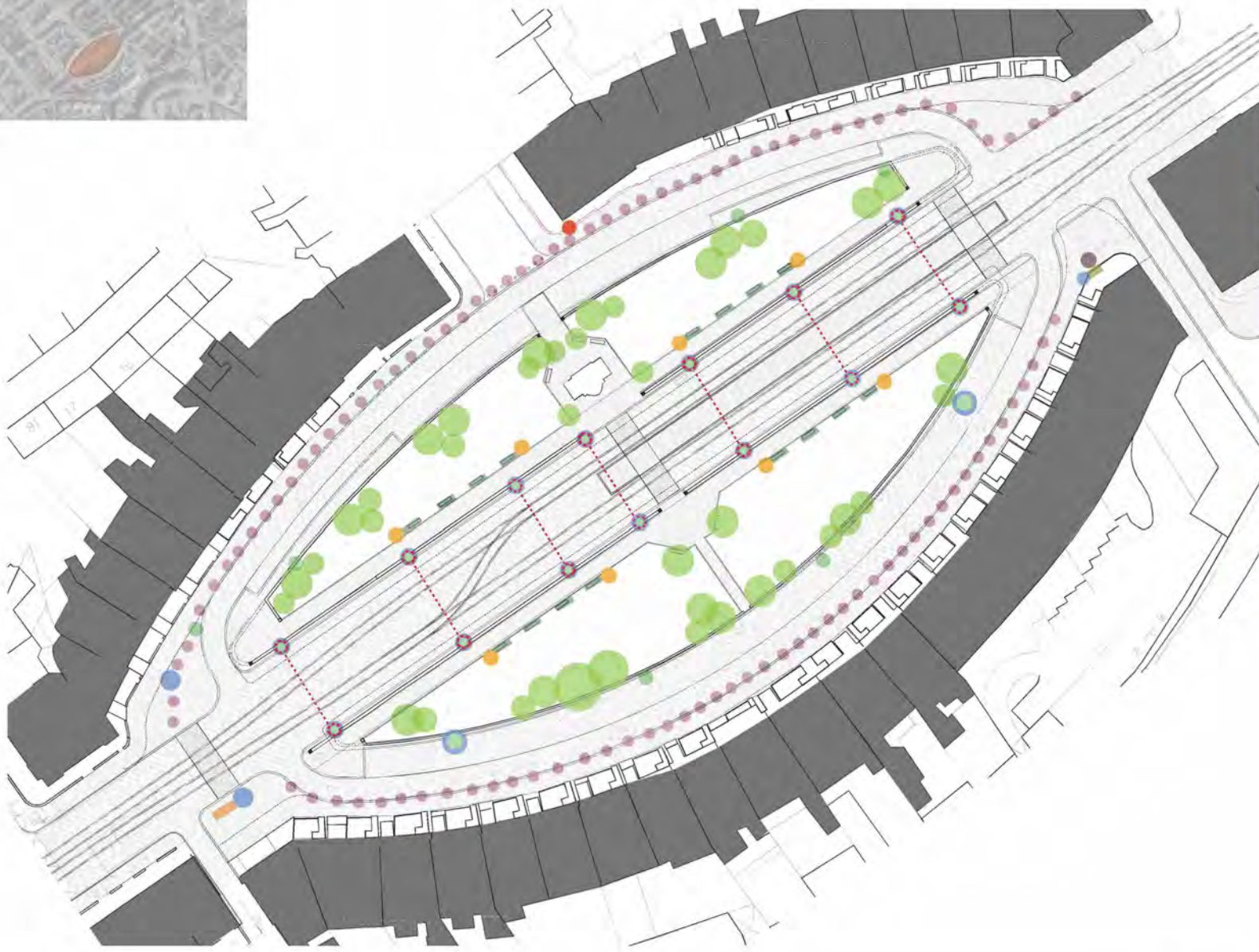
COATES CRESCENT STREETSCAPE STUDY Rationalised plus Tram Plan



Street Elements

Column	Handrails
Large Benches	Bus Stop
Small Wheely Bin	Bus timetable
Small Benches	Tram shelter
Tree	Tree
Sign	Traffic signs
Service Bin	Post Box
Telephone Box	Bike stand
Lighting poles	New street

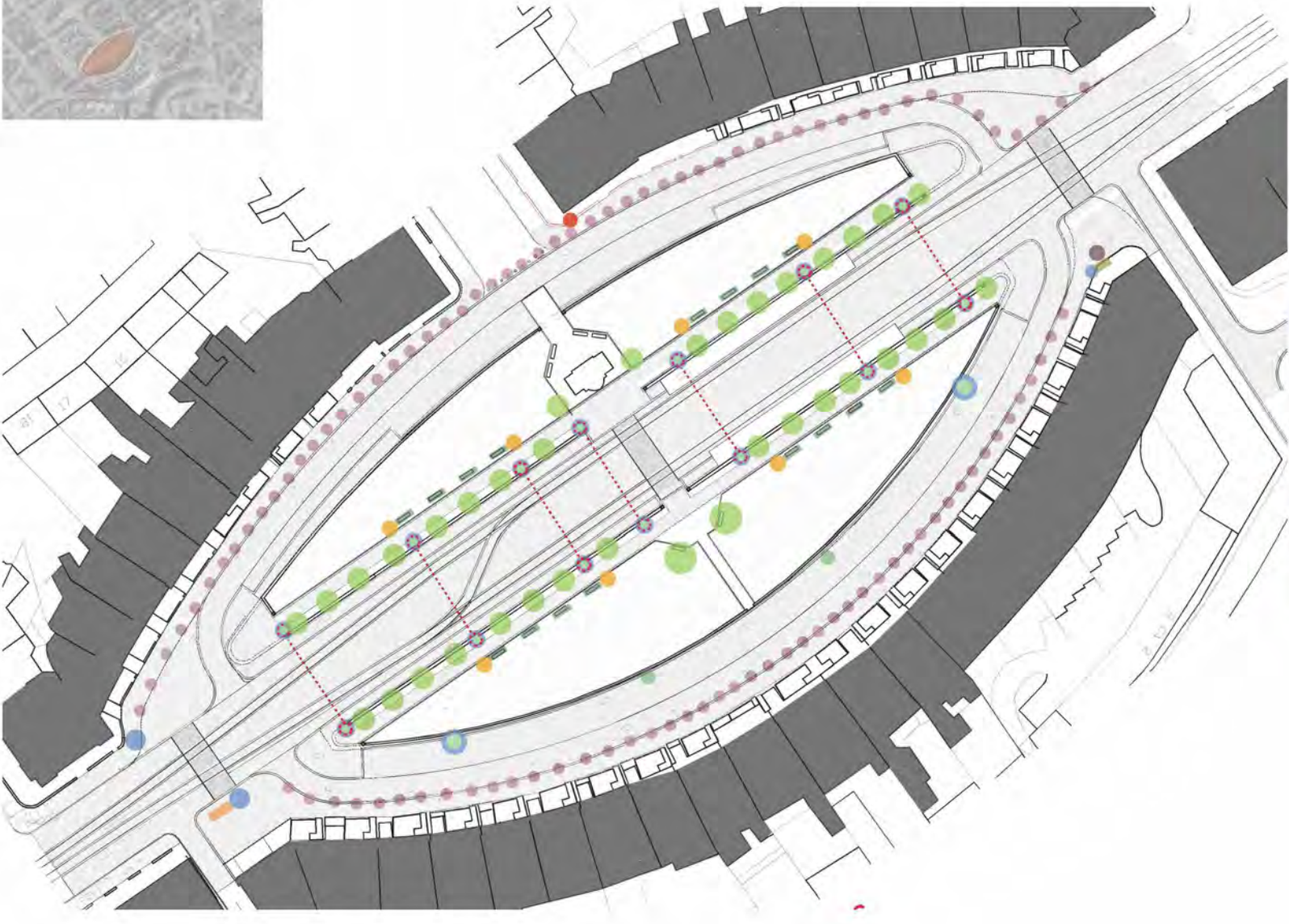
COATES CRESCENT STREETSCAPE STUDY
Rationalized Central Platform Study 080129



Street Elements

Lighting	Planters
Planters	Art Benches
Small Wheeled Benches	Art Benches
Street Furniture	Street Furniture
Street Furniture	Street Furniture
Street Furniture	Street Furniture
Street Furniture	Street Furniture
Street Furniture	Street Furniture
Street Furniture	Street Furniture
Street Furniture	Street Furniture

COATES CRESCENT STREETSCAPE STUDY Rationalized Side Platforms Study 080129



Street Elements

Bus Stop	Bus Shelter
Street Furniture	Art Piece
Small Wheeled Bin	Bus Stop Sign
Street Signage	Light Pole
Tree	Planter
Light Pole	Light Pole
Benches	Tree Box
Bus Stop Sign	Bike Stand
Planters	Planters

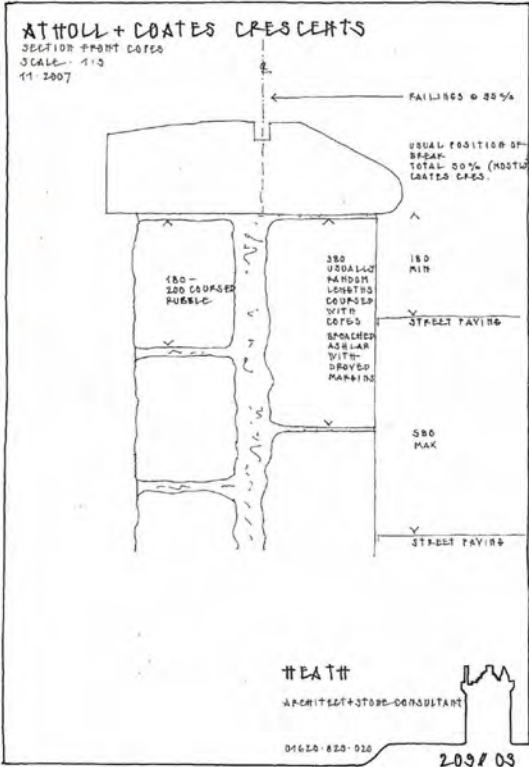
COATES CRESCENT STONE WALL TREATMENT



In support of the stone assessment by 'Heath' Architect and Stone Consultants the scheme proposes to rationalise the wall openings as shown in plan. While we are taking out more wall than the original scheme to rationalise the openings, we are not re-aligning the kerbs across the line of the wall. If in future the back footpath was desired to be shut, and the wall re-instated to it's original line, it could be in line of the old wall could even be traced at ground level in the paving pattern similar to that of the Flodden wall in parts of the city.



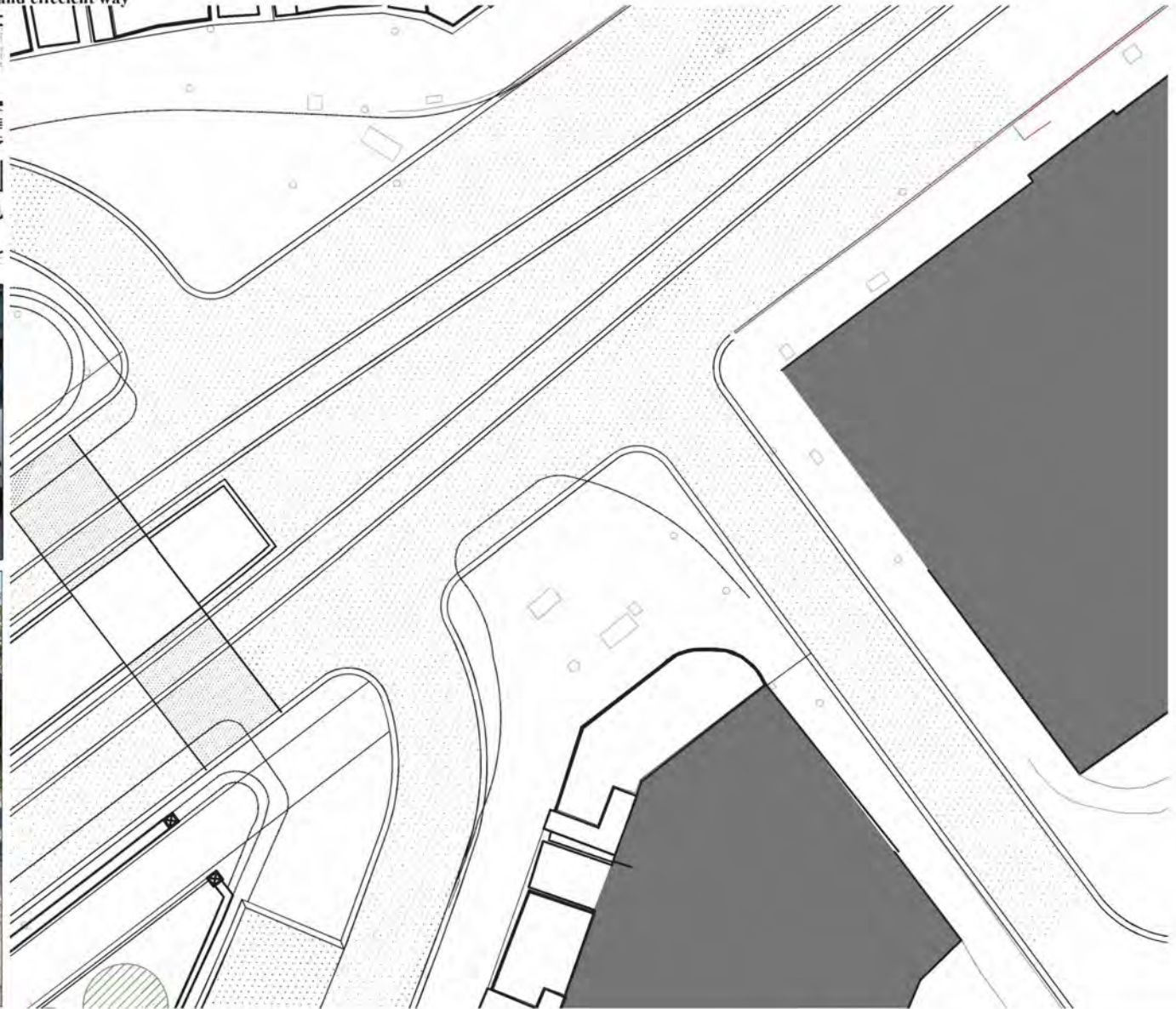
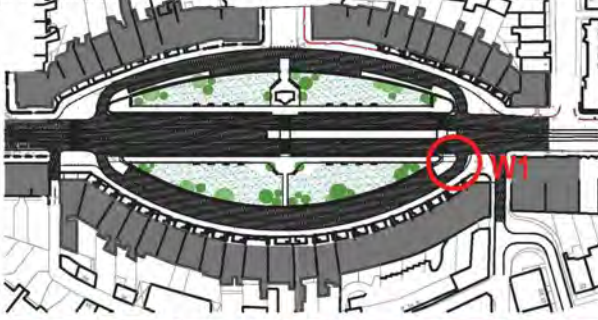
Splicing of the copes as shown in the photos above show a recommended practice as in the Quartermile Development. It demonstrates a valid approach which is hugely cost effective compared to new copes.



COATES CRESCENT STONE WALL DETAIL (W1)

Wall section 1

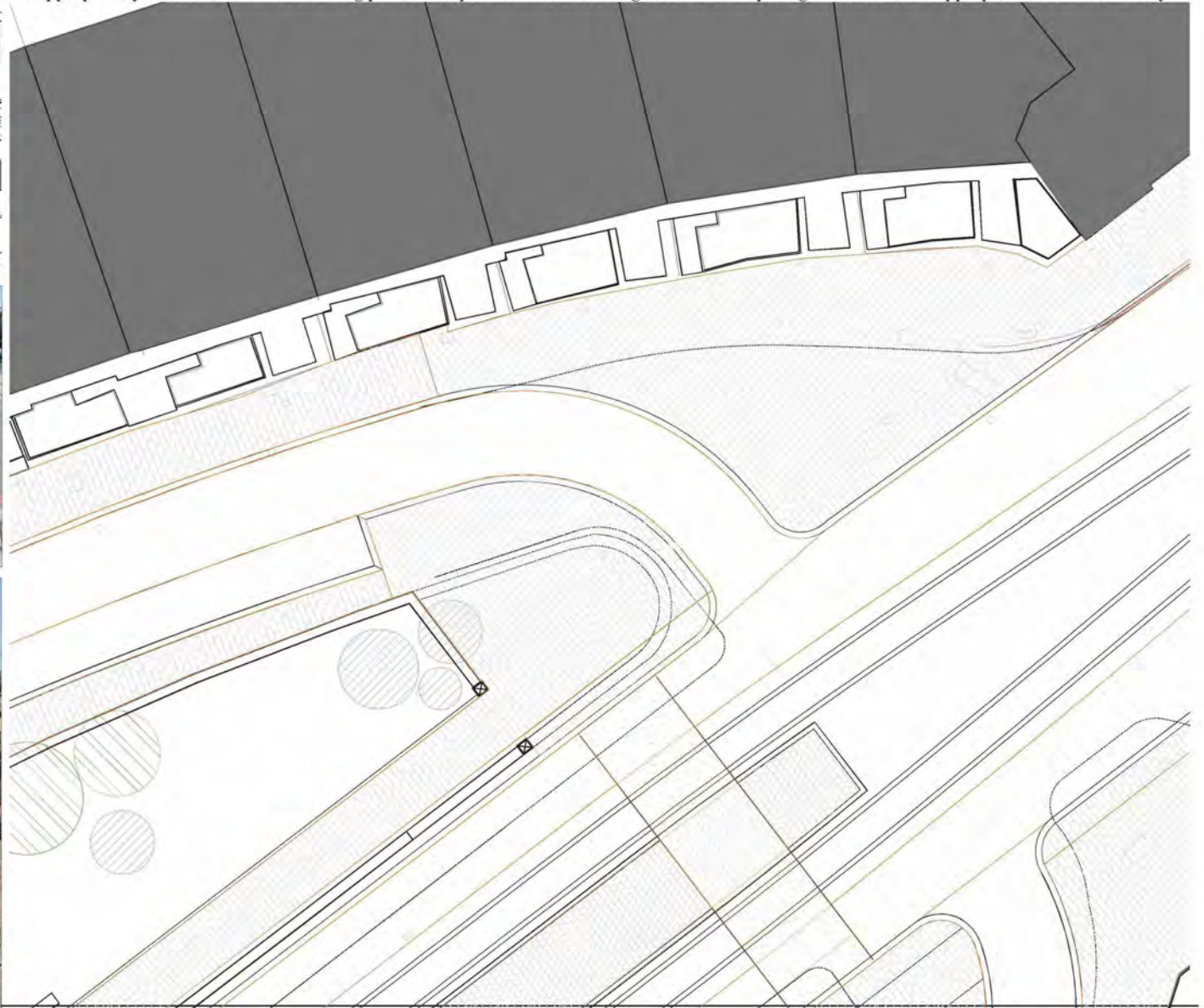
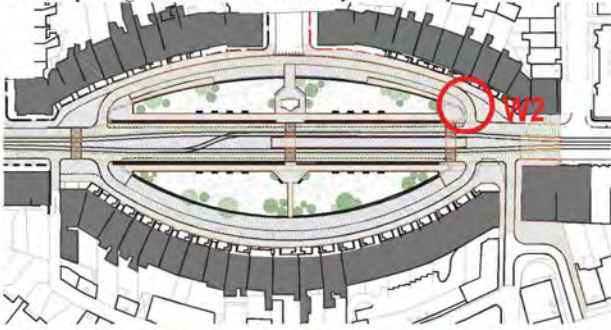
- a. realigned kerb geometary has allowed for a more generous public realm and new crossing alignments. The opening in the walls needs to respond to this scale and form and not set up situations that will lead to people feeling confined and or encouraged to jump the wall and short cut.
- b. The walls have been cut back and given terminating pillars to afford a terminus to any future railing re-instatement, and to form a strong gateway threshold for people emerging from the safety of the path behind the wall, into a vehicular environment.
- c. Primary pedestrian flow is accommodated for in the most direct and effecient way



COATES CRESCENT STONE WALL DETAIL (W2)

Wall section 2

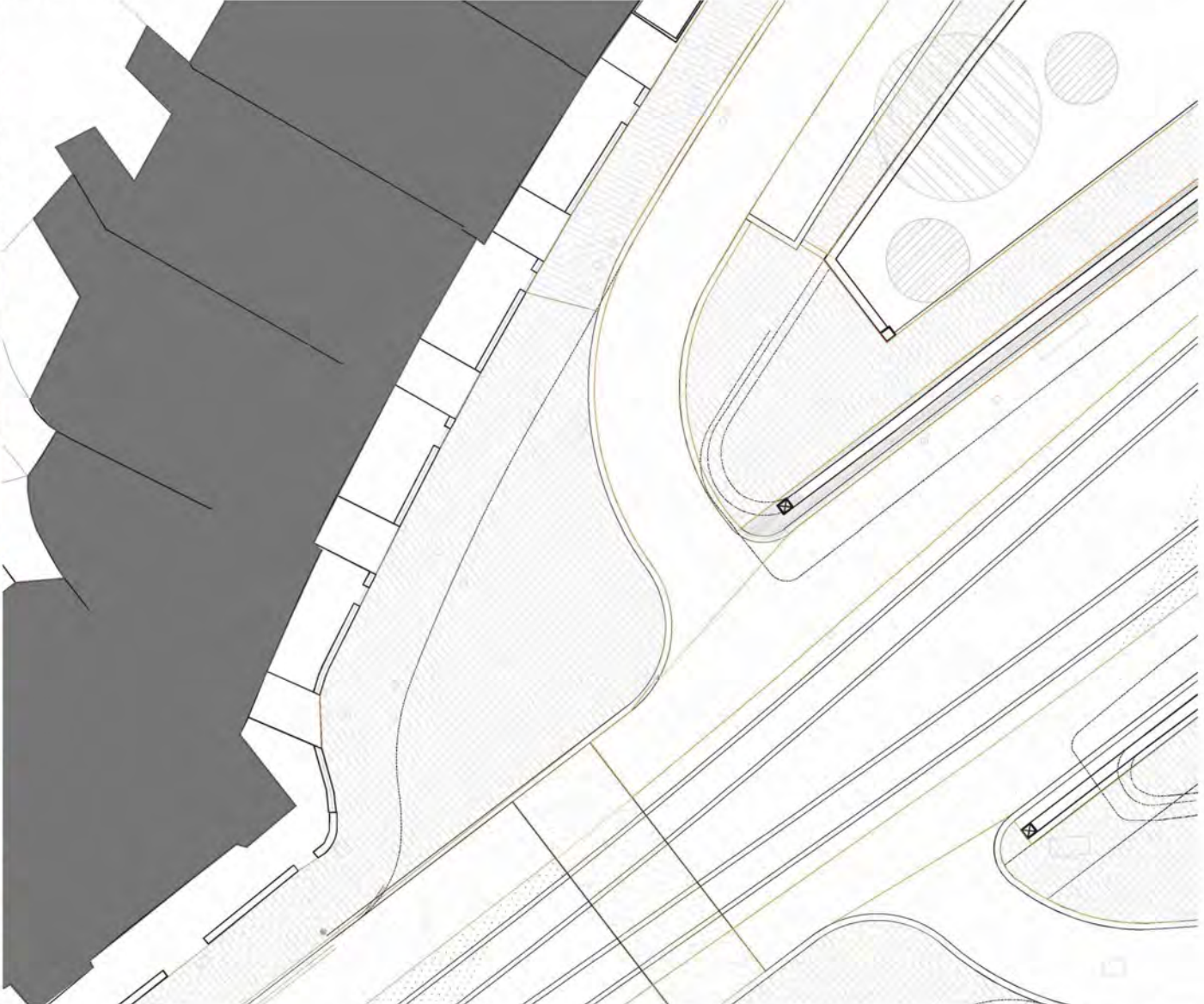
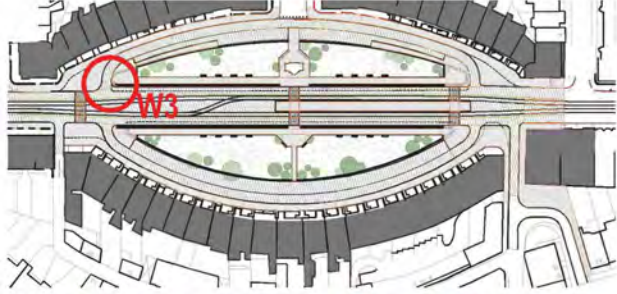
- a. realigned kerb geometry has allowed for a more generous public realm and new crossing alignments. The opening in the walls needs to respond to this scale and form and not set up situations that will lead to people feeling confined and or encouraged to jump the wall and short cut.
- b. The walls have been cut back and given terminating pillars to afford a terminus to any future railing re-instatement, and to form a strong gateway threshold for people emerging from the safety of the path behind the wall, into a vehicular environment.
- c. Primary pedestrian flow is accommodated for in the most direct and efficient way
- d the opening formed acts in simetary with the oposite side to afford an appropriately scaled location for a crossing point to teh platform. The resulting breadth of the opening is reduced to an appropriate scale with a newly



COATES CRESCENT STONE WALL DETAIL (W3)

Wall section3

- a. realigned kerb geometary has allowed for a more generous public realm and new crossing alignments. The opening in the walls needs to respond to this scale and form and not set up situations that will lead to people feeling confined and or encouraged to jump the wall and short cut.
- b. The walls have been cut back and given terminating pillars to afford a terminus to any future railing re-instatement, and to form a strong gateway threshold for people emerging from the safety of the path behind the wall, into a vehicular environment.
- c. Primary pedestrian flow is accommodated for in the most direct and effecient way



COATES CRESCENT STONE WALL DETAIL (W4)

Wall section 4

- a. realigned kerb geometary has allowed for a more generous public realm and new crossing alignments. The opening in the walls needs to respond to this scale and form and not set up situations that will lead to people feeling confined and or encouraged to jump the wall and short cut.
- b. The walls have been cut back and given terminating pillars to afford a terminus to any future railing re-instatement, and to form a strong gateway threshold for people emerging from the safety of the path behind the wall, into a vehicular environment.
- c. Primary pedestrian flow is accommodated for in the most direct and effecient way

