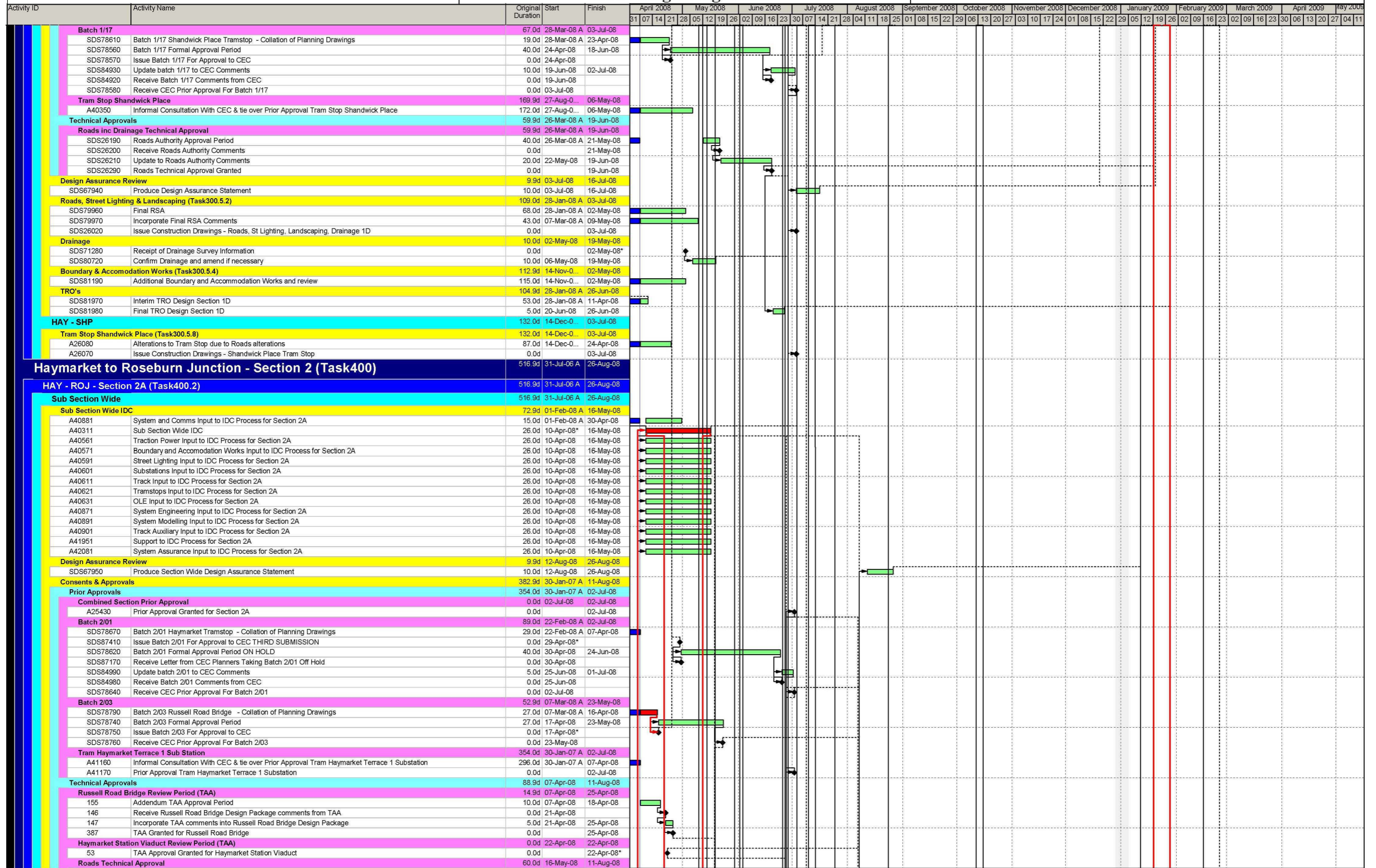


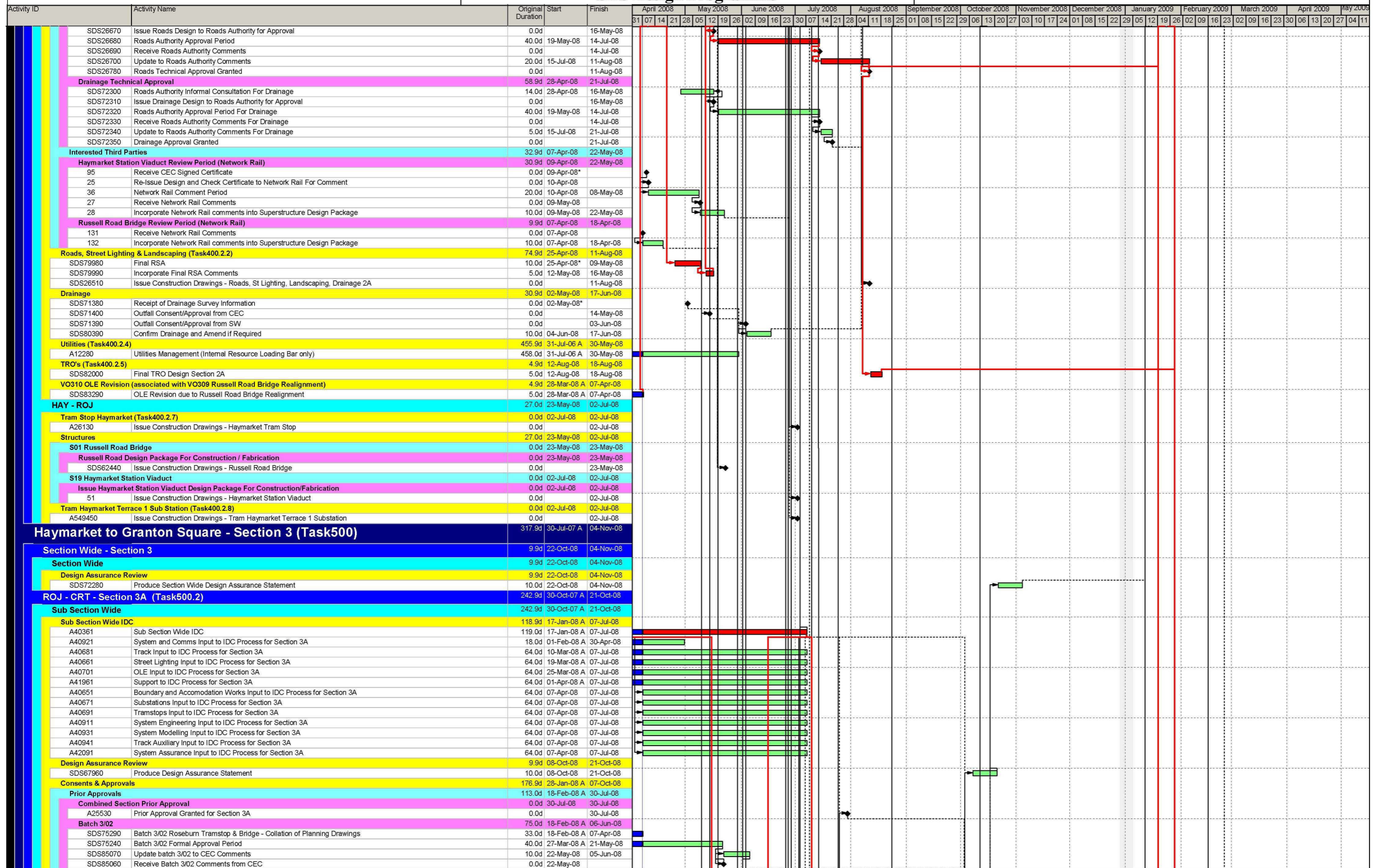
■ Actual Work ■ Critical Remaining Work
■ Remaining Work ◆ Milestone

V31 Remaining Activities



Actual Work Remaining Work Critical Remaining Work Milestone

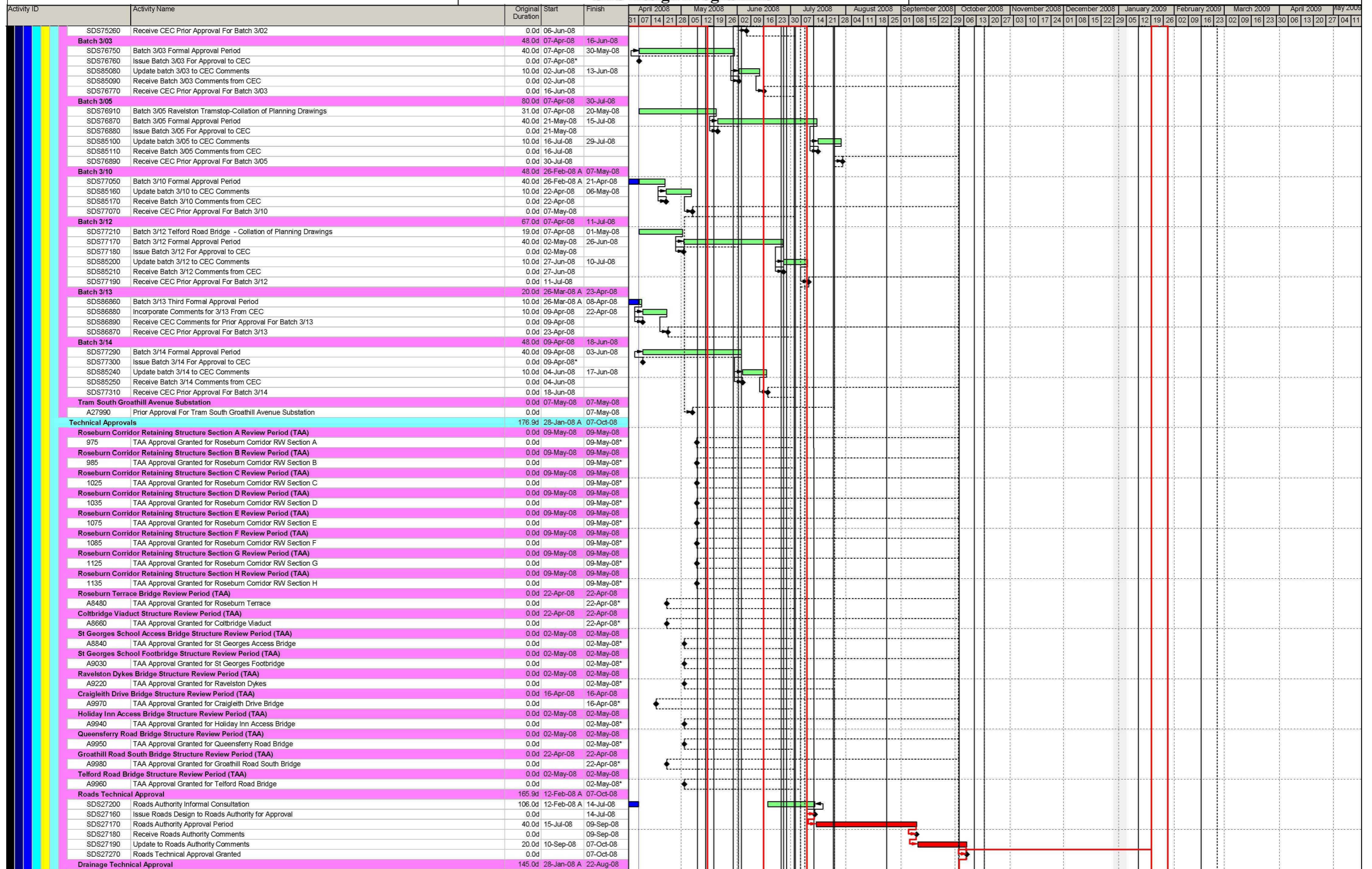
V31 Remaining Activities



█ Actual Work █ Critical Remaining Work
█ Remaining Work ◆ Milestone

V31 Remaining Activities

SDS Design Programme



█ Actual Work █ Critical Remaining Work
█ Remaining Work ◆ Milestone

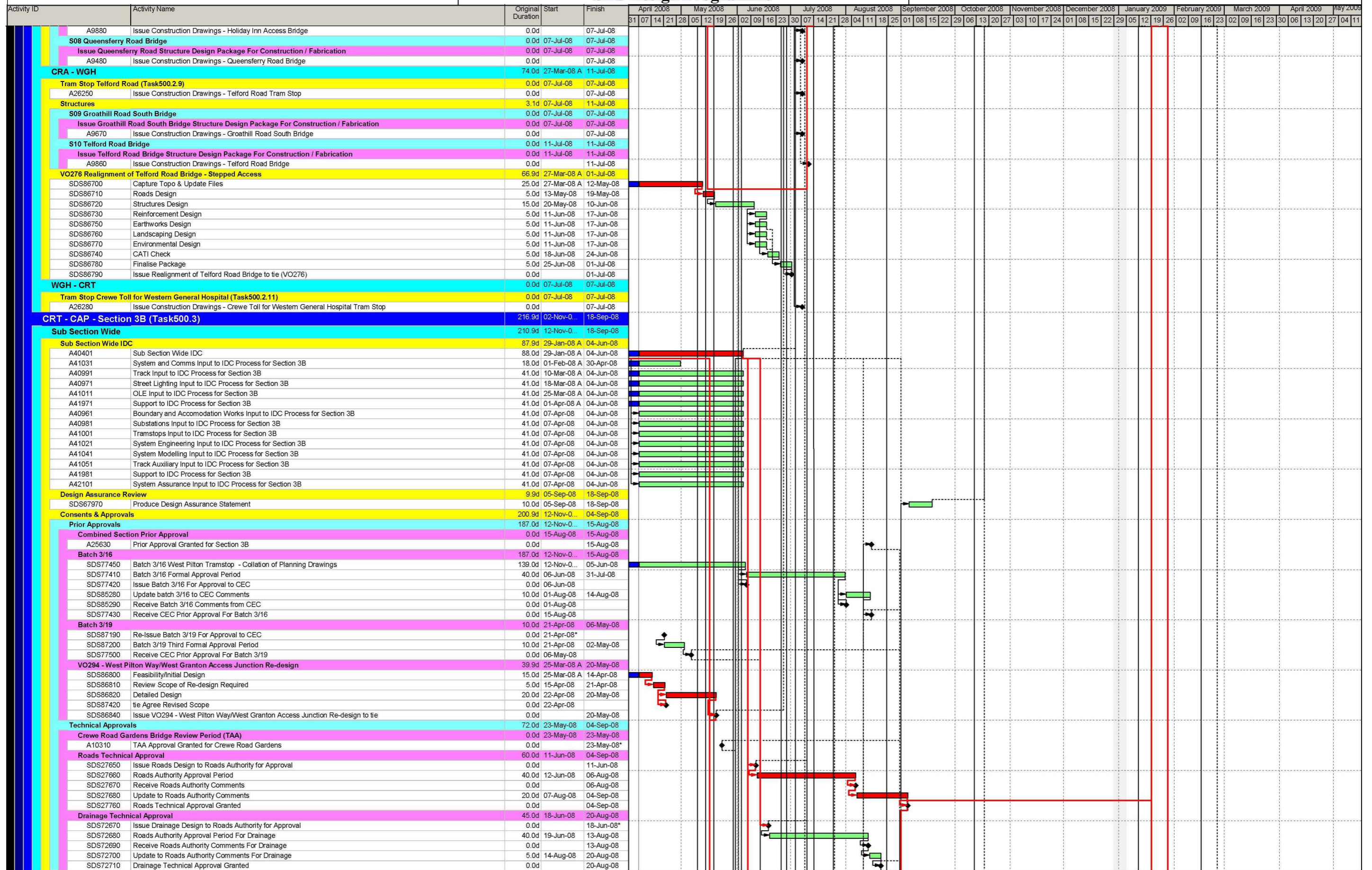
V31 Remaining Activities

SDS Design Programme

Activity ID	Activity Name	Original Duration	Start	Finish	April 2008	May 2008	June 2008	July 2008	August 2008	September 2008	October 2008	November 2008	December 2008	January 2009	February 2009	March 2009	April 2009	May 2009	
SDS72600	Roads Authority Informal Consultation For Drainage	100.0d	28-Jan-08	20-Jun-08															
SDS72610	Issue Drainage Design to Roads Authority for Approval	0.0d		20-Jun-08*															
SDS72620	Roads Authority Approval Period For Drainage	40.0d	20-Jun-08	15-Aug-08															
SDS72630	Receive Roads Authority Comments For Drainage	0.0d		15-Aug-08															
SDS72640	Update to Roads Authority Comments For Drainage	5.0d	15-Aug-08	22-Aug-08															
SDS72650	Drainage Technical Approval Granted	0.0d		22-Aug-08															
Roads, Street Lighting & Landscaping (Task 500.2.2)																			
SDS80000	Final RSA	10.0d	20-May-08	03-Jun-08															
SDS80010	Incorporate Final RSA Comments	5.0d	04-Jun-08	10-Jun-08															
SDS27000	Issue Construction Drawings - Roads, St Lighting, Landscaping, Drainage 3A	0.0d		07-Oct-08															
Drainage																			
SDS71480	Receipt of Drainage Survey Information	0.0d		02-May-08*															
SDS71500	Outfall Consent/Approval from CEC	0.0d		14-May-08															
SDS71490	Outfall Consent/Approval from SW	0.0d		03-Jun-08															
SDS80430	Confirm Drainage and Amend if Required	10.0d	04-Jun-08	17-Jun-08															
Boundary & Accomodation Works (Task 500.2.3)																			
SDS81200	Additional Boundary and Accommodation Works and review	123.9d	30-Oct-07	02-May-08															
Environmental																			
Badger Mitigation Plan																			
SDS87220	CEC Approval Period	62.0d	21-Feb-08	15-May-08															
SDS60510	LHMP & Badger Mitigation Plan Approval	0.0d		15-May-08															
SDS87210	Planning Committee	0.0d		15-May-08*															
SDS87230	Update to Planning Committee Comments	10.0d	16-May-08	30-May-08															
SDS87240	Issue Construction Drawings - Badger Mitigation Plan and LHMP	0.0d		30-May-08															
TRO's																			
SDS82020	Final TRO Design Section 3A	4.9d	08-Oct-08	14-Oct-08															
Roseburn Corridor Retaining Structures																			
Roseburn Corridor Retaining Structures: Section A - Russell Road to Roseburn Terrace																			
Issue Roseburn Corridor Retaining Structure A Design Package For Construction/Fabrication																			
966	Issue Construction Drawings - Roseburn Corridor Retaining Structure A	0.0d		07-Jul-08															
Roseburn Corridor Retaining Structures: Section B - Roseburn Terrace to Coltbridge Viaduct																			
Issue Roseburn Corridor Retaining Structure B Design Package For Construction/Fabrication																			
991	Issue Construction Drawings - Roseburn Corridor Retaining Structure B	0.0d		08-Jul-08															
Roseburn Corridor Retaining Structures: Section C - Coltbridge Viaduct to Ravelston																			
Issue Roseburn Corridor Retaining Structure C Design Package For Construction/Fabrication																			
1016	Issue Construction Drawings - Roseburn Corridor Retaining Structure C	0.0d		07-Jul-08															
Roseburn Corridor Retaining Structures: Section D - Ravelston to Craigleith Drive																			
Issue Roseburn Corridor Retaining Structure D Design Package For Construction/Fabrication																			
1041	Issue Construction Drawings - Roseburn Corridor Retaining Structure D	0.0d		07-Jul-08															
Roseburn Corridor Retaining Structures: Section E - Craigleith Drive to Queensferry Road																			
Issue Roseburn Corridor Retaining Structure E Design Package For Construction/Fabrication																			
1066	Issue Construction Drawings - Roseburn Corridor Retaining Structure E	0.0d		07-Jul-08															
Roseburn Corridor Retaining Structures: Section F - Queensferry Road to Groathill																			
Issue Roseburn Corridor Retaining Structure F Design Package For Construction/Fabrication																			
1091	Issue Construction Drawings - Roseburn Corridor Retaining Structure F	0.0d		07-Jul-08															
Roseburn Corridor Retaining Structures: Section G - Groathill to Telford Road																			
Issue Roseburn Corridor Retaining Structure G Design Package For Construction/Fabrication																			
1116	Issue Construction Drawings - Roseburn Corridor Retaining Structure G	0.0d		07-Jul-08															
Roseburn Corridor Retaining Structures: Section H - Telford Road to Ferry Road																			
Issue Roseburn Corridor Retaining Structure H Design Package For Construction/Fabrication																			
1141	Issue Construction Drawings - Roseburn Corridor Retaining Structure H	0.0d		11-Jul-08															
ROJ - ROS																			
Tram Stop Roseburn (Task500.2.6)																			
A26160	Issue Construction Drawings - Roseburn Tram Stop	0.0d		07-Jul-08															
Structures																			
S01 Roseburn Terrace Bridge																			
Issue Design Package For Construction / Fabrication																			
SDS62410	Issue Construction Drawings - Roseburn Terrace Bridge	0.0d		07-Jul-08															
ROS - RAD																			
Tram Stop Ravelston (Task500.2.7)																			
A26190	Issue Construction Drawings - Ravelston Tram Stop	0.0d		30-Jul-08															
Structures																			
S02 Coltbridge Viaduct																			
Issue Coltbridge Viaduct Structure Design Package For Construction / Fabrication																			
A8540	Issue Construction Drawings - Coltbridge Viaduct	0.0d		07-Jul-08															
S03 St Georges School Access Bridge																			
Issue St Georges School Access Bridge Structure Design Package For Construction / Fabrication																			
A8730	Issue Construction Drawings - St Georges School Access Bridge	0.0d		07-Jul-08															
S04 St Georges School Footbridge																			
Issue St Georges School Footbridge Structure Design Package For Construction / Fabrication																			
A8910	Issue Construction Drawings - St Georges School Footbridge	0.0d		07-Jul-08															
RAD - CRA																			
Tram Stop Craigleith (Task500.2.8)																			
A26220	Issue Construction Drawings - Craigleith Tram Stop	0.0d		07-Jul-08															
Structures																			
S05 Ravelston Dykes Bridge																			
Issue Ravelston Dykes Structure Design Package For Construction / Fabrication																			
A9100	Issue Construction Drawings - Ravelston Dykes	0.0d		30-Jul-08															
S06 Craigleith Drive Bridge																			
Issue Craigleith Drive Bridge Structure Design Package For Construction / Fabrication																			
A9290	Issue Construction Drawings - Craigleith Drive Bridge	0.0d		07-Jul-08															
S07 Holiday Inn Access Bridge																			
Issue Holiday Inn Access Bridge Structure Design Package For Construction / Fabrication																			

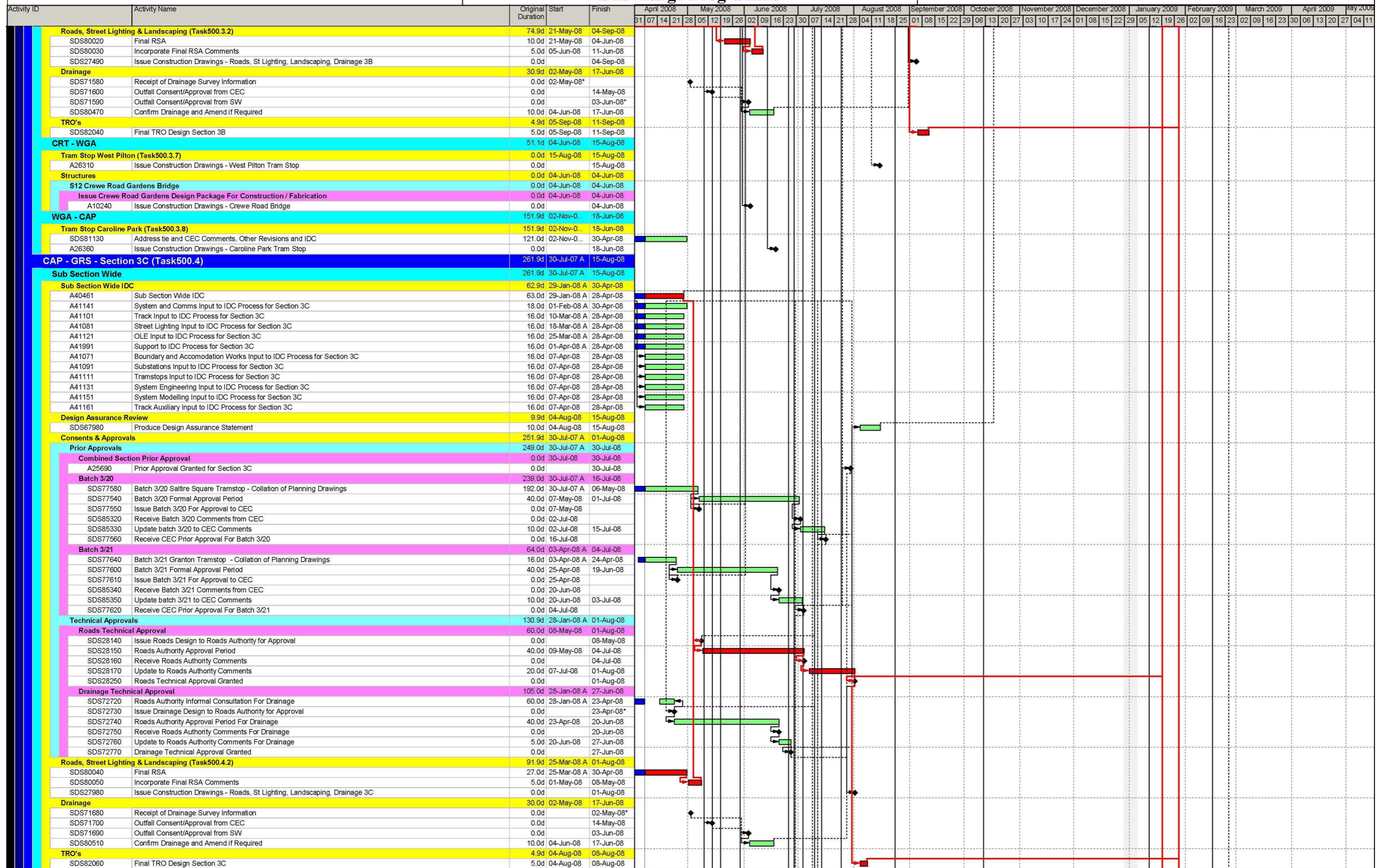
■ Actual Work ■ Critical Remaining Work
■ Remaining Work ◆ Milestone

V31 Remaining Activities



█ Actual Work █ Critical Remaining Work
█ Remaining Work ◆ Milestone

V31 Remaining Activities



█ Actual Work █ Critical Remaining Work
█ Remaining Work ◆ Milestone

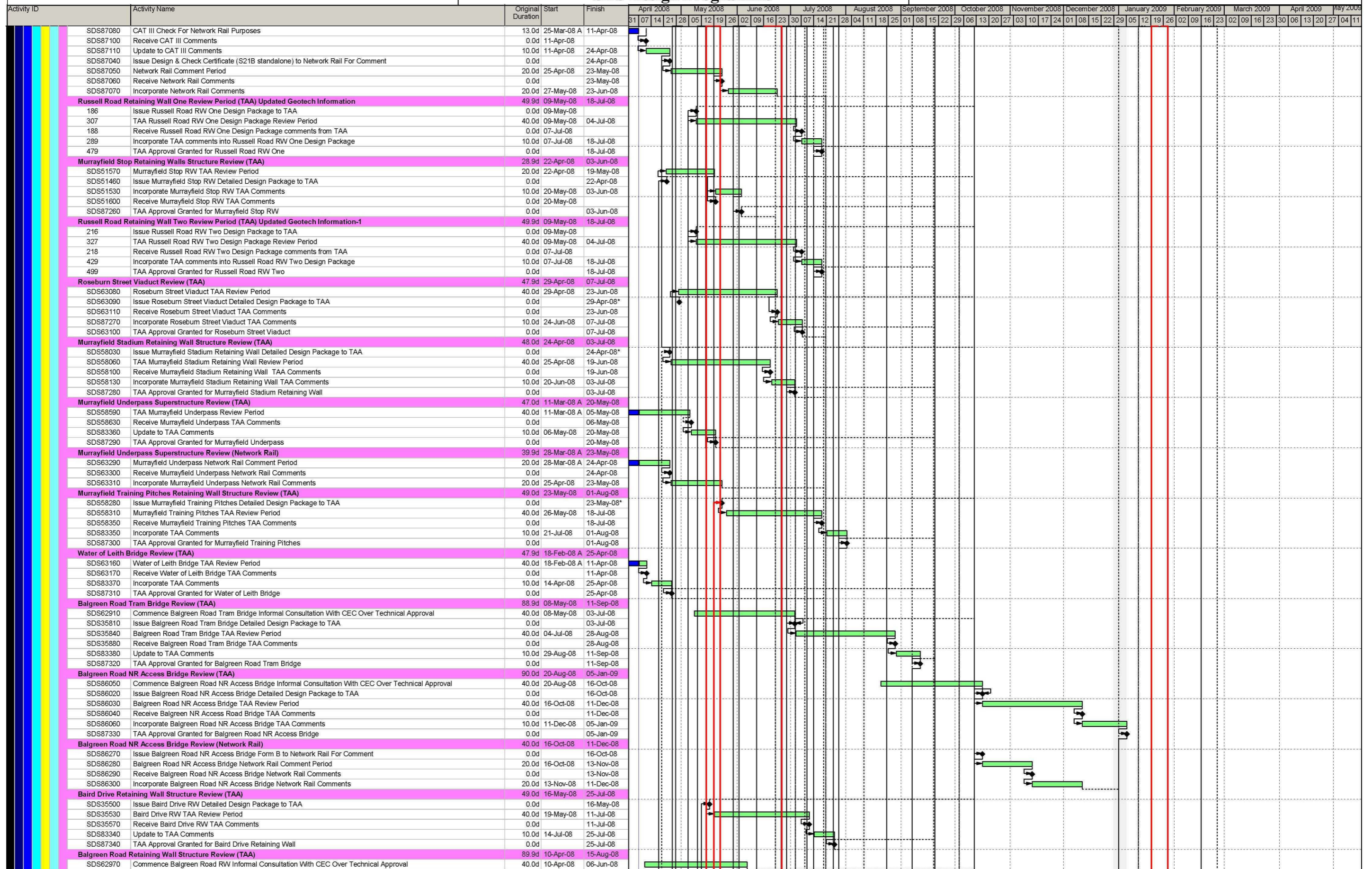
V31 Remaining Activities

Activity ID	Activity Name	Original Duration	Start	Finish	Timeline																											
					April 2008	May 2008	June 2008	July 2008	August 2008	September 2008	October 2008	November 2008	December 2008	January 2009	February 2009	March 2009	April 2009	May 2009														
CAP - GRW																																
Tram Stop Saltire Square (Task500.4.7)																																
A26440	Issue Construction Drawings - Saltire Square Tram Stop	0.0d	16-Jul-08	16-Jul-08																												
GRW - GRS																																
Tram Stop Granton (Task500.4.9)																																
A26520	Issue Construction Drawings - Granton Tram Stop	0.0d	04-Jul-08	04-Jul-08																												
Roseburn Junction to Gogarburn - Section 5 (Task700)																																
Section Wide - Section 5																																
Section Wide																																
Section Wide Design Assurance Review																																
SDS72280	Produce Section Wide Design Assurance Statement	10.0d	08-Oct-08	21-Oct-08																												
ROJ - BAR - Section 5A (Task700.2)																																
Sub Section Wide																																
Sub Section Wide IDC																																
A41251	System and Comms Input to IDC Process for Section 5A	24.0d	01-Feb-08 A	16-Jun-08																												
A40511	Sub Section Wide IDC	20.0d	19-May-08	16-Jun-08																												
A41171	Traction Power Input to IDC Process for Section 5A	20.0d	19-May-08	16-Jun-08																												
A41181	Boundary and Accomodation Works Input to IDC Process for Section 5A	20.0d	19-May-08	16-Jun-08																												
A41191	Street Lighting Input to IDC Process for Section 5A	20.0d	19-May-08	16-Jun-08																												
A41201	Substations Input to IDC Process for Section 5A	20.0d	19-May-08	16-Jun-08																												
A41211	Track Input to IDC Process for Section 5A	20.0d	19-May-08	16-Jun-08																												
A41221	Tramstops Input to IDC Process for Section 5A	20.0d	19-May-08	16-Jun-08																												
A41231	OLE Input to IDC Process for Section 5A	20.0d	19-May-08	16-Jun-08																												
A41241	System Engineering Input to IDC Process for Section 5A	20.0d	19-May-08	16-Jun-08																												
A41261	System Modelling Input to IDC Process for Section 5A	20.0d	19-May-08	16-Jun-08																												
A41271	Track Auxiliary Input to IDC Process for Section 5A	20.0d	19-May-08	16-Jun-08																												
A41281	Structures Input to IDC Process for Section 5A	20.0d	19-May-08	16-Jun-08																												
A42001	Support to IDC Process for Section 5A	20.0d	19-May-08	16-Jun-08																												
A42111	System Assurance Input to IDC Process for Section 5A	20.0d	19-May-08	16-Jun-08																												
Design Assurance Review																																
SDS67990	Produce Design Assurance Statement	10.0d	24-Sep-08	07-Oct-08																												
Consents & Approvals																																
Prior Approvals																																
Combined Section Prior Approval																																
A25780	Prior Approval Granted for Section 5A	0.0d	25-Jul-08	25-Jul-08																												
Batch 5/05																																
SDS75350	Batch 5/05 Russell Road RW - Collation of Planning Drawings	10.0d	07-Apr-08*	18-Apr-08																												
SDS75300	Batch 5/05 Formal Approval Period	40.0d	21-Apr-08	13-Jun-08																												
SDS75310	Issue Batch 5/05 For Approval to CEC	0.0d	21-Apr-08*																													
SDS85370	Update batch 5/05 to CEC Comments	10.0d	16-Jun-08	27-Jun-08																												
SDS85380	Receive Batch 5/05 Comments from CEC	0.0d	16-Jun-08																													
SDS75320	Receive CEC Prior Approval For Batch 5/05	0.0d	30-Jun-08																													
Batch 5/06																																
SDS75410	Batch 5/06 Murrayfield Stadium Tramstop - Collation of Planning Drawings	195.0d	16-Jul-07 A	24-Apr-08																												
SDS75360	Batch 5/06 Formal Approval Period	40.0d	25-Apr-08	19-Jun-08																												
SDS75370	Issue Batch 5/06 For Approval to CEC	0.0d	25-Apr-08																													
SDS85400	Update batch 5/06 to CEC Comments	5.0d	20-Jun-08	26-Jun-08																												
SDS85390	Receive Batch 5/06 Comments from CEC	0.0d	20-Jun-08																													
SDS75380	Receive CEC Prior Approval For Batch 5/06	0.0d	27-Jun-08																													
Batch 5/07																																
SDS75470	Batch 5/07 Roseburn Street and Murrayfield Stadium - Collation of Planning Drawings	10.0d	09-May-08*	22-May-08																												
SDS75420	Batch 5/07 Formal Approval Period	40.0d	23-May-08	17-Jul-08																												
SDS75430	Issue Batch 5/07 For Approval to CEC ON HOLD AS PER TIE INSTRUCTION	0.0d	23-May-08																													
SDS85420	Update batch 5/07 to CEC Comments	5.0d	18-Jul-08	24-Jul-08																												
SDS85410	Receive Batch 5/07 Comments from CEC	0.0d	18-Jul-08																													
SDS75440	Receive CEC Prior Approval For Batch 5/07	0.0d	25-Jul-08																													
Batch 5/08																																
SDS75530	Batch 5/08 Murrayfield Pitches and Water of Leith - Collation of Planning Drawings	28.0d	07-Apr-08*	15-May-08																												
SDS75480	Batch 5/08 Formal Approval Period	40.0d	16-May-08	10-Jul-08																												
SDS75490	Issue Batch 5/08 For Approval to CEC	0.0d	16-May-08																													
SDS85500	Update batch 5/08 to CEC Comments	10.0d	11-Jul-08	24-Jul-08																												
SDS85490	Receive Batch 5/08 Comments from CEC	0.0d	11-Jul-08																													
SDS75500	Receive CEC Prior Approval For Batch 5/08	0.0d	25-Jul-08																													
Batch 5/10																																
SDS75650	Batch 5/10 Baird Drive and Balgreen Road - Collation of Planning Drawings	8.0d	02-May-08	14-May-08																												
SDS75600	Batch 5/10 Formal Approval Period	40.0d	15-May-08	09-Jul-08																												
SDS75610	Issue Batch 5/10 For Approval to CEC	0.0d	15-May-08																													
SDS85520	Update batch 5/10 to CEC Comments	10.0d	10-Jul-08	23-Jul-08																												
SDS85510	Receive Batch 5/10 Comments from CEC	0.0d	10-Jul-08																													
SDS75620	Receive CEC Prior Approval For Batch 5/10	0.0d	24-Jul-08																													
Technical Approvals																																
Network Rail & CAT III Check (21D, W8, W9)																																
SDS63440	CAT III Check For Network Rail Purposes	16.0d	30-Apr-08	22-May-08																												
SDS83320	Issue Design For CAT III Check For Network Rail Purposes	0.0d	30-Apr-08																													
SDS63450	Receive CAT III Comments	0.0d	23-May-08																													
SDS63500	Update to CAT III Comments	10.0d	23-May-08	06-Jun-08																												
SDS63400	Issue Design & Check Certificate (S21D, W8, W9) to Network Rail For Comment	0.0d		06-Jun-08																												
SDS63410	Network Rail Comment Period	20.0d	09-Jun-08	04-Jul-08																												
SDS63420	Receive Network Rail Comments	0.0d		04-Jul-08																												
SDS63430	Incorporate Network Rail Comments	20.0d	07-Jul-08	01-Aug-08																												
Network Rail & CAT III Check (21B)																																
62.9d 25-Mar-08 A 23-Jun-08																																

█ Actual Work █ Critical Remaining Work
█ Remaining Work ◆ Milestone

V31 Remaining Activities

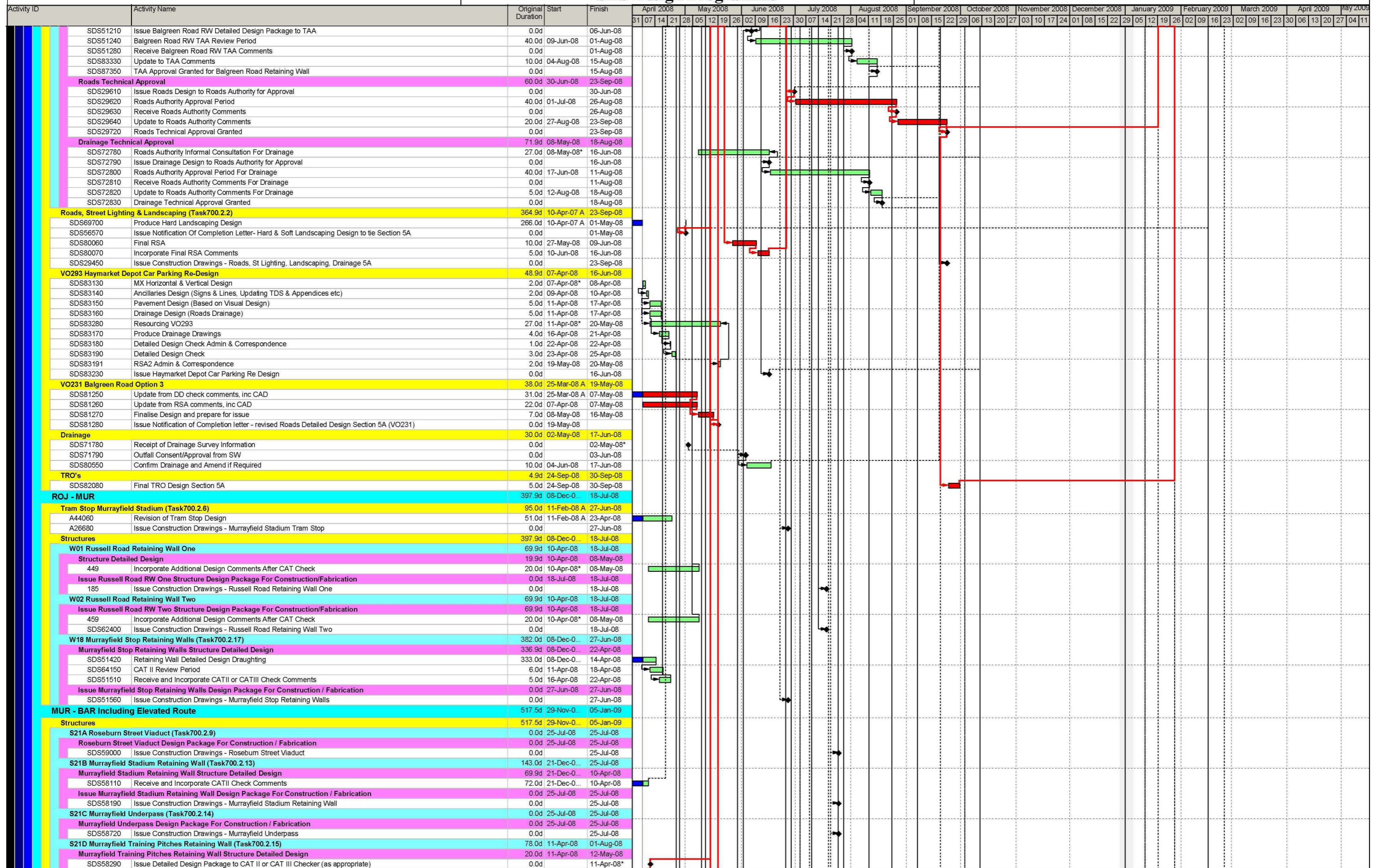
SDS Design Programme



█ Actual Work █ Critical Remaining Work
█ Remaining Work ◆ Milestone

V31 Remaining Activities

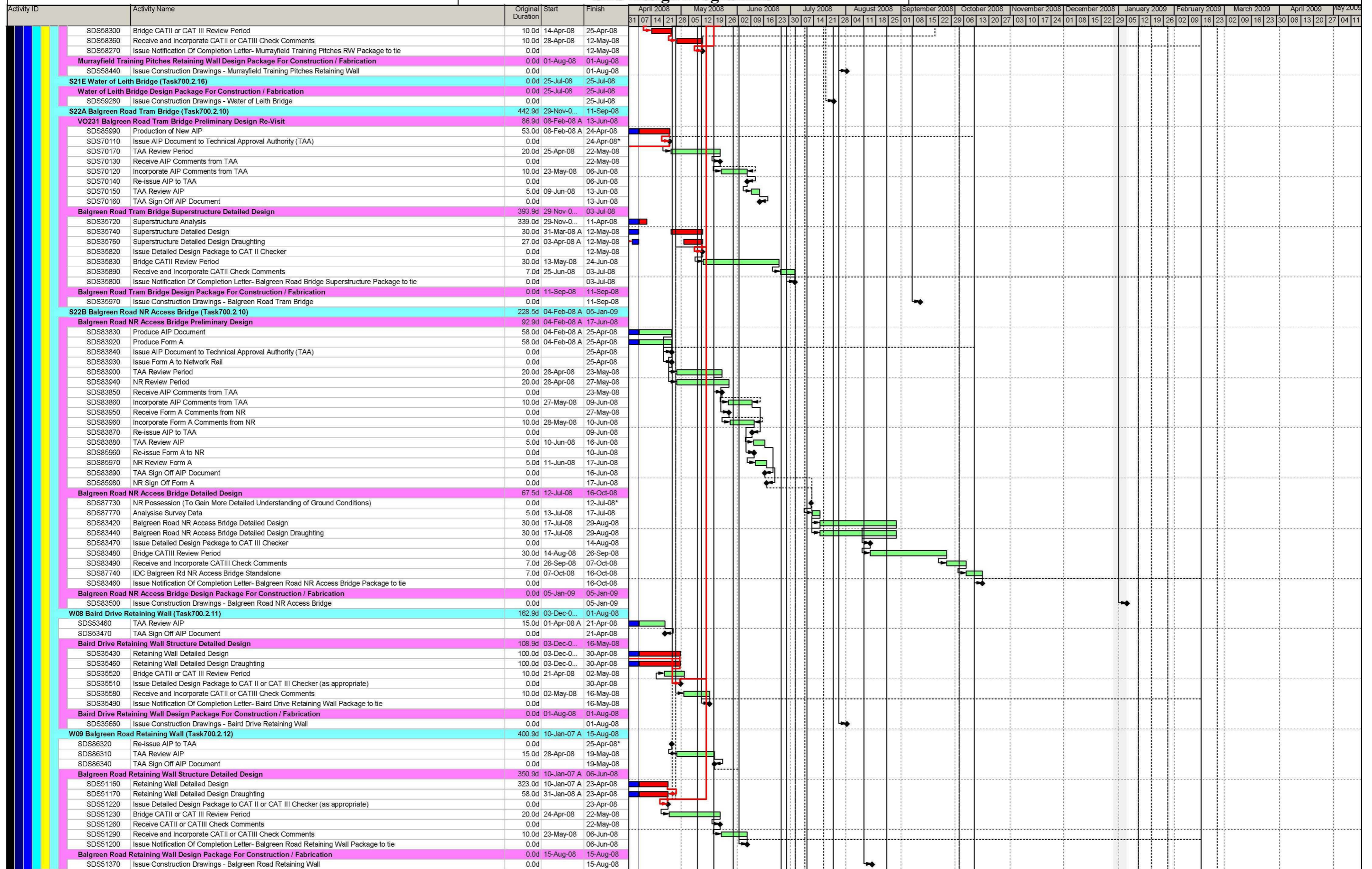
SDS Design Programme



█ Actual Work █ Critical Remaining Work
█ Remaining Work ◆ Milestone

V31 Remaining Activities

SDS Design Programme



█ Actual Work █ Critical Remaining Work
█ Remaining Work ◆ Milestone

V31 Remaining Activities