



**Condition Report Princes St Saturday 19th Sunday 20th February
following on from Saturday 12th February 2011**

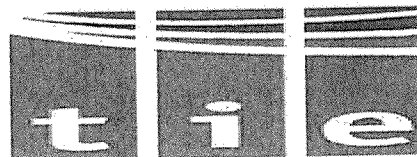
Minimum 90% of mastic and tar laid up to the Tram Running Track along Prince's St is in need of repair with some repair work urgent.

See additional photos from the survey 12th February uploaded to TIE extranet. Follow [LINK](#)

See additional photos from the survey 19th/20th February uploaded to TIE extranet. Follow [LINK](#)

Privileged and confidential – prepared in contemplation of mediation
FOISA exempt

CONDITIONAL REPORT FOR PRINCES ST



1.

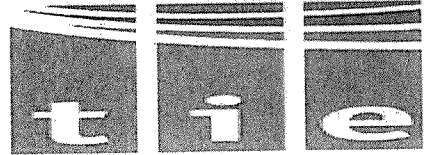
12/2/11

19/2/11 SAME

Dip in levels at Waverly where the laid track meets existing road on west bound carriageway needs addressed with possible ramp signage put in place



CONDITIONAL REPORT FOR PRINCES ST

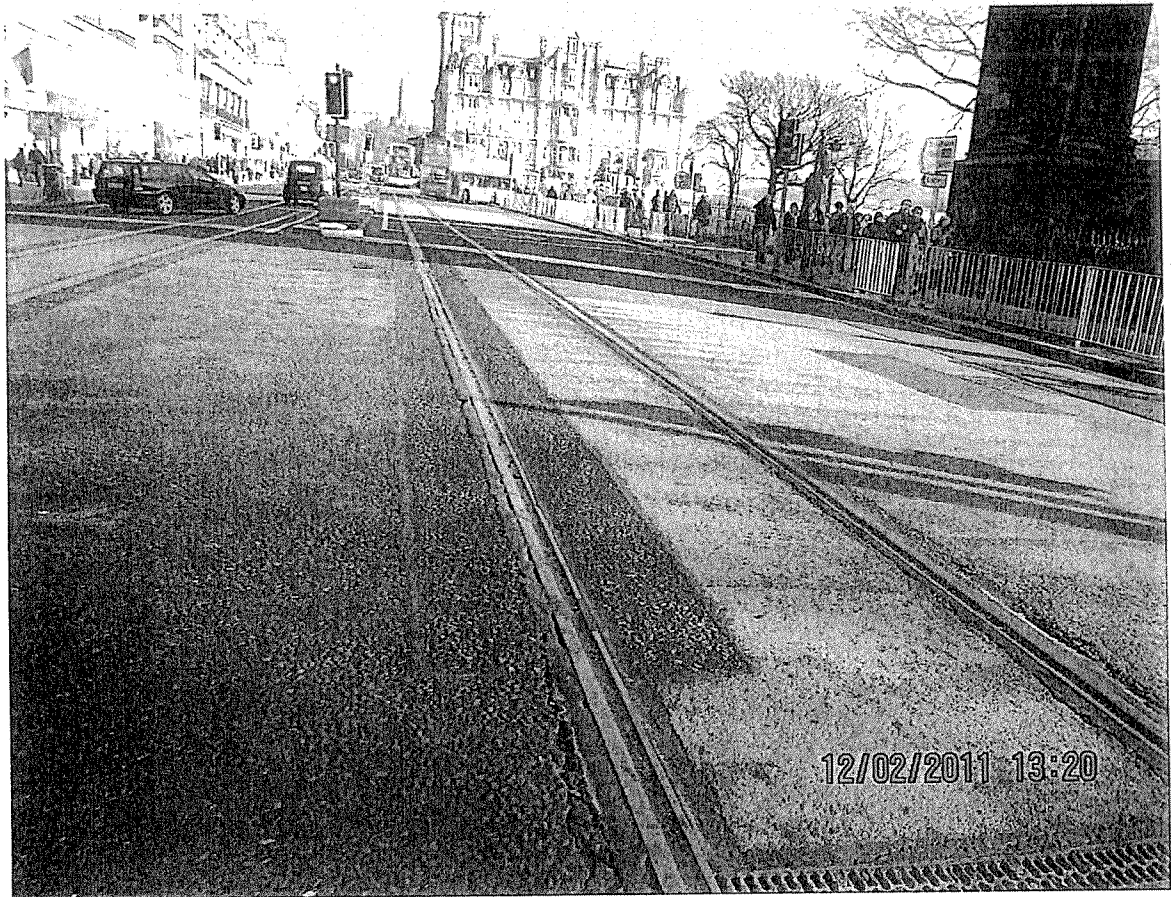


2.

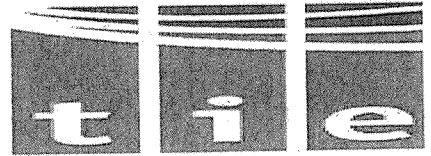
12/2/11

19/2/11 SAME

BT COVER AT SCOTT MONUMENT WEST BOUND CARRIAGEWAY LOOSE AND RATTLING



CONDITIONAL REPORT FOR PRINCES ST



3.

12/2/11

19/2/11 SAME AS BELOW

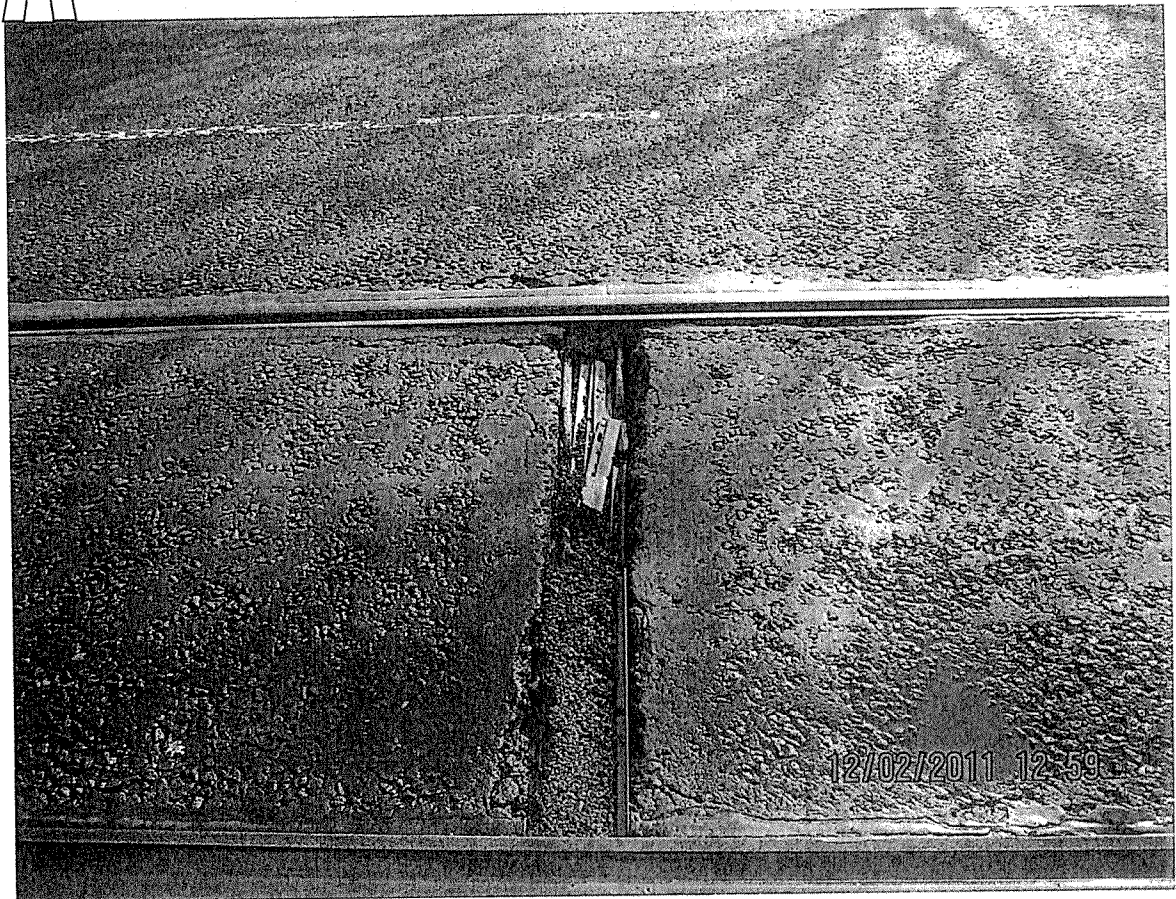
19/2/11 SOME DRAINS REMOVED AND FILLED IN WITH TAR AS PART OF BILFINGER
REMEDIAL WORKS PHOTO C

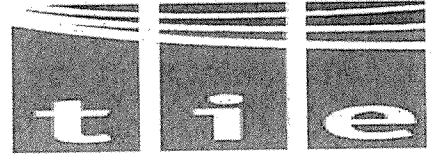
ALL DRAINS CROSSING TRACK NEED SOME KIND OF REPAIR, EITHER BROKEN
GRATING OR TAR FAILING, WITH SOME COLAPSED

PHOTO A, THE COVER BELOW WAS REPORTED TO TIE ON CALL 12/2/11

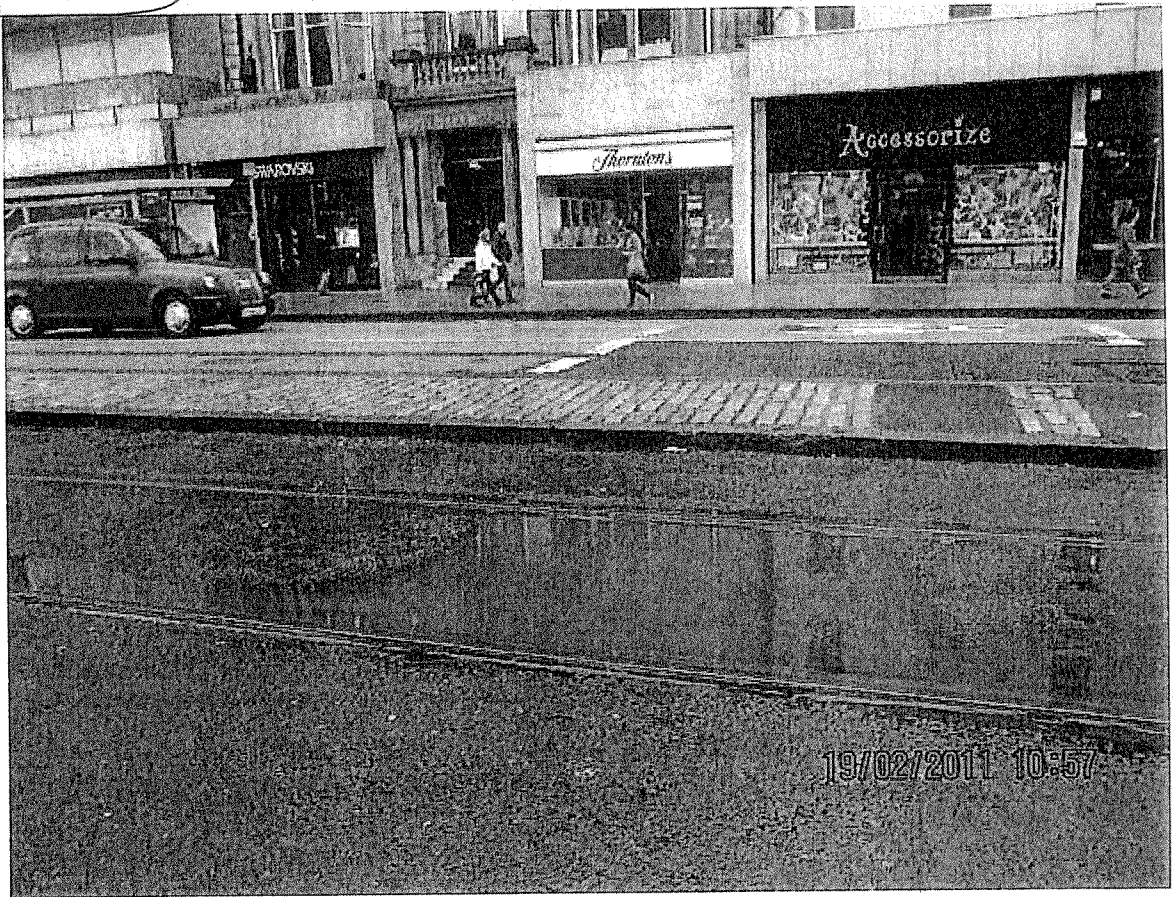
PHOTO B, TAKEN OF SAME COVER 19/2/11, CONDITION UNKNOWN

A





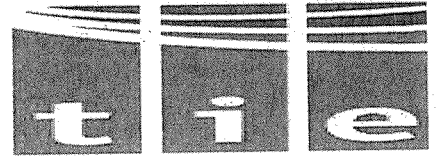
B



C

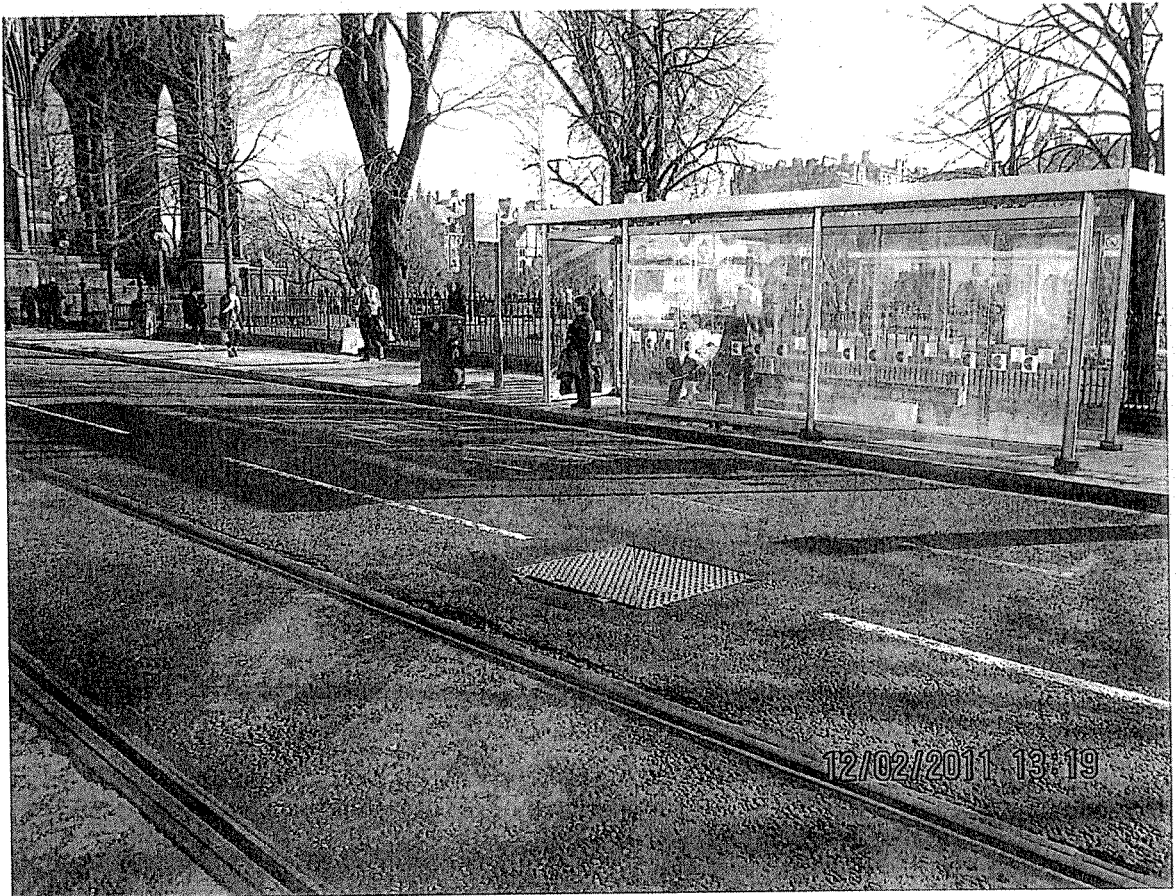


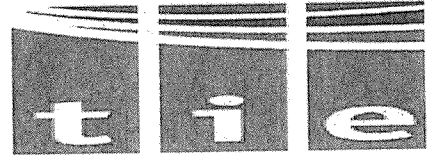
CONDITIONAL REPORT FOR PRINCES ST



4.
12/2/11
19/2/11 NO CHANGE

TRACKSIDE DUCT BOX LID WEST BOUND CARRIAGEWAY AT RAMADA HOTEL VERY LOOSE AND NOISY.





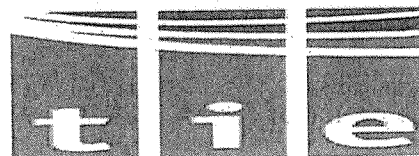
5.

12/2/11 Trackside drainage lid sunk below tolerable level outside Jenner's east bound carriageway in need of repair. PHOTO A

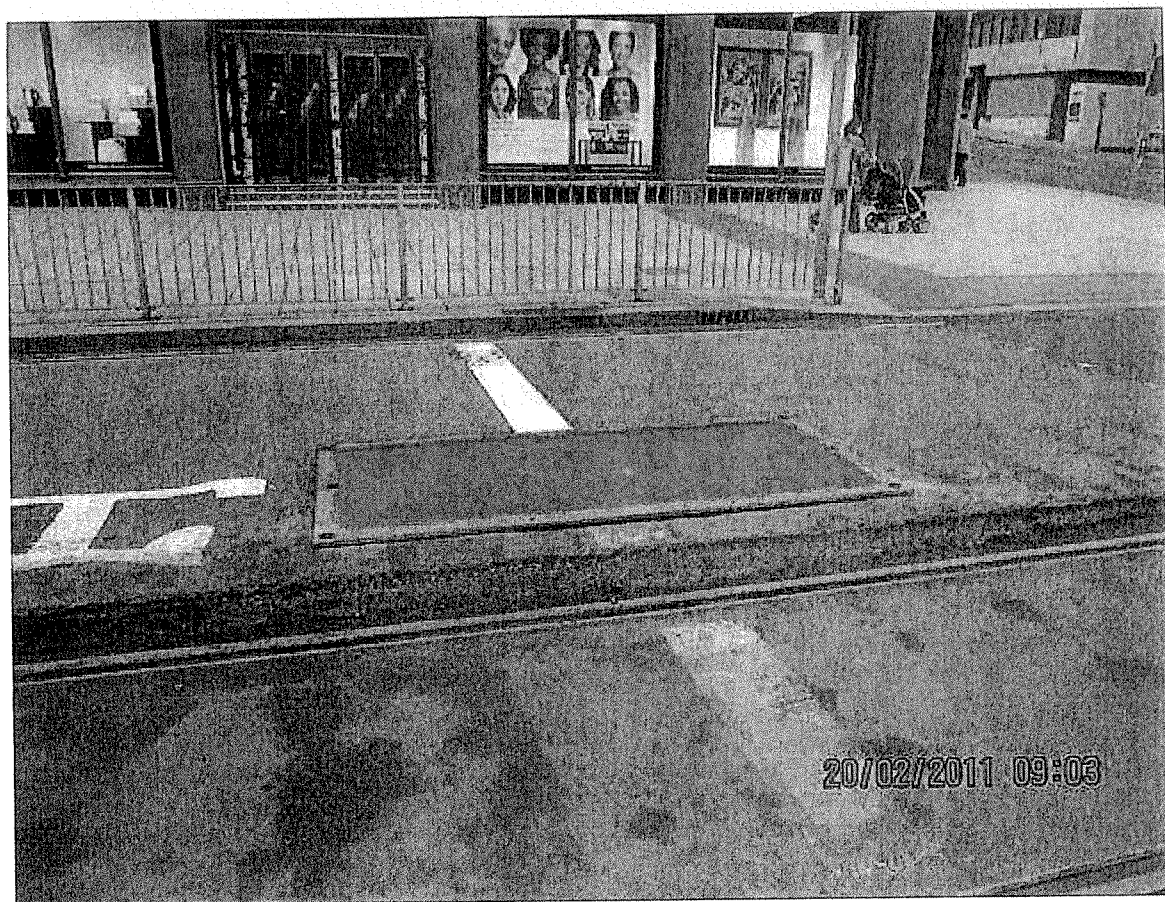
20/2/11 TEMPORARY MEASURE TAKEN BY BILFINGER, NON-SLIP CARRIAGEWAY PLATE BOLTED OVER THE MANHOLE LID PHOTO B

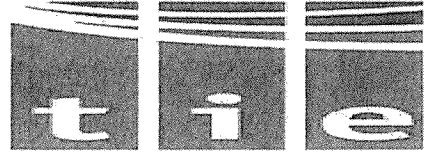
A





B





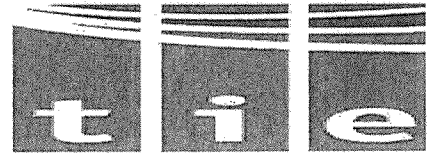
6.

12/2/11 Track Drain at BHS on west bound carriageway in need of urgent repair, PHOTO A

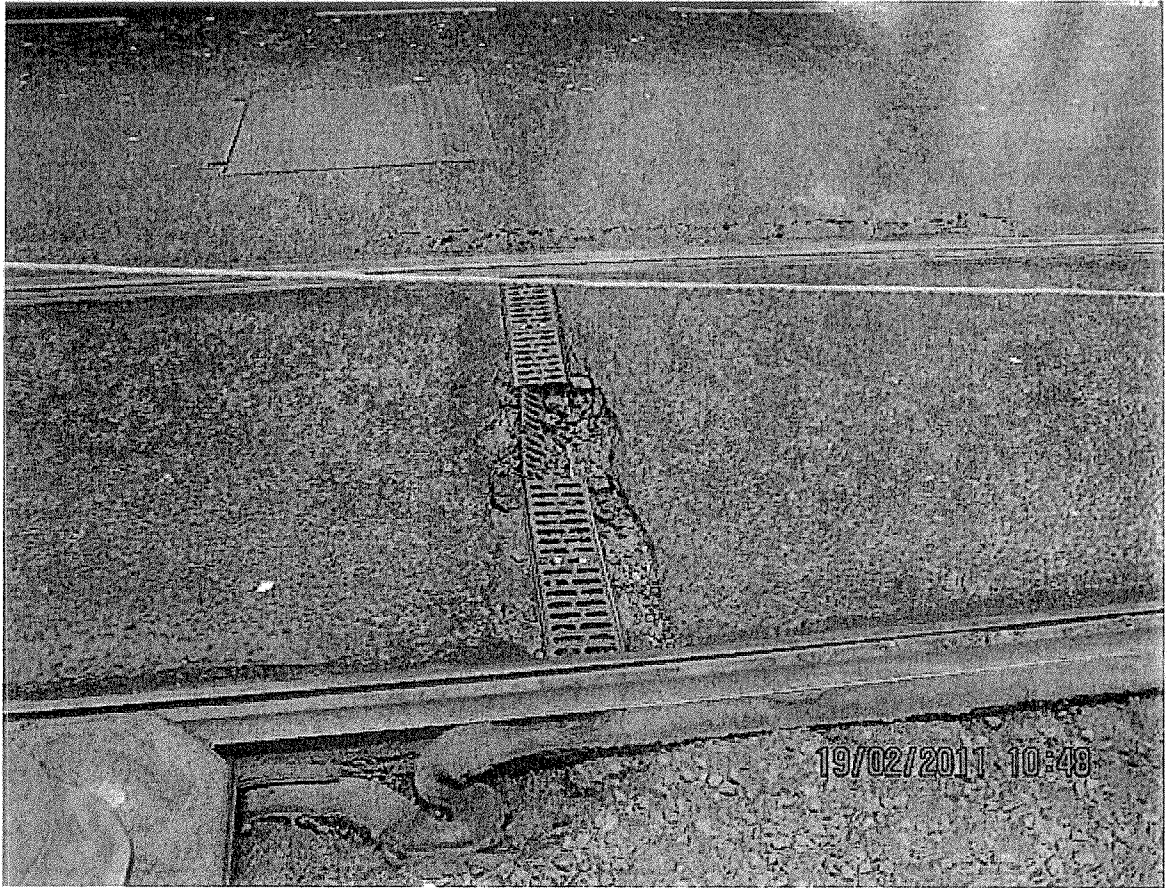
19/2/11 SAME CONDITION, PHOTO B

A

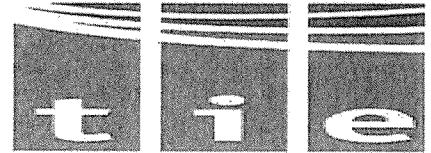




B



CONDITIONAL REPORT FOR PRINCES ST



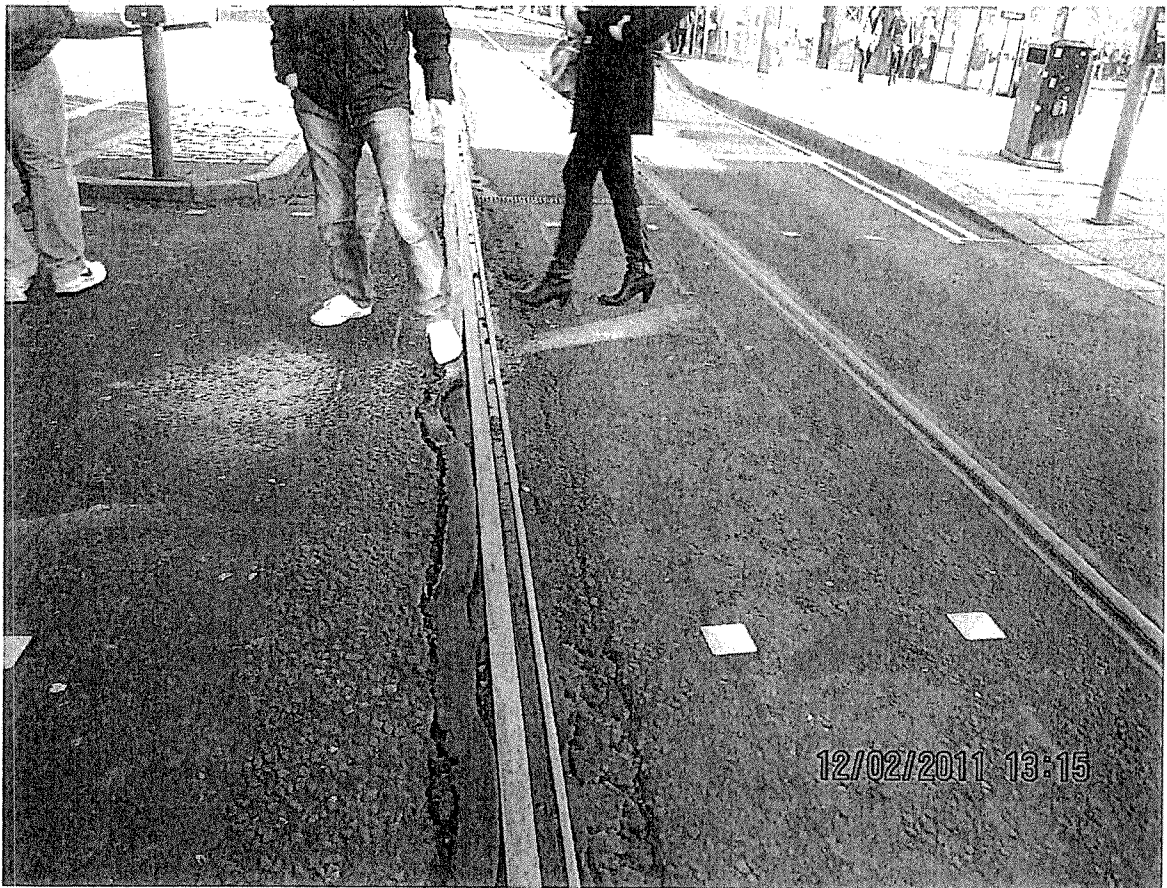
7.

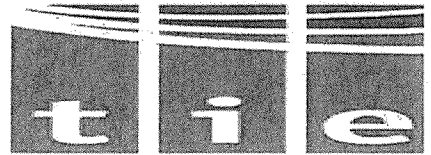
12/2/11

Pedestrian Crossing to Gallery Precinct on west bound carriageway as laid mastic and tar beside running track in need of urgent repair (dangerous) PHOTO A

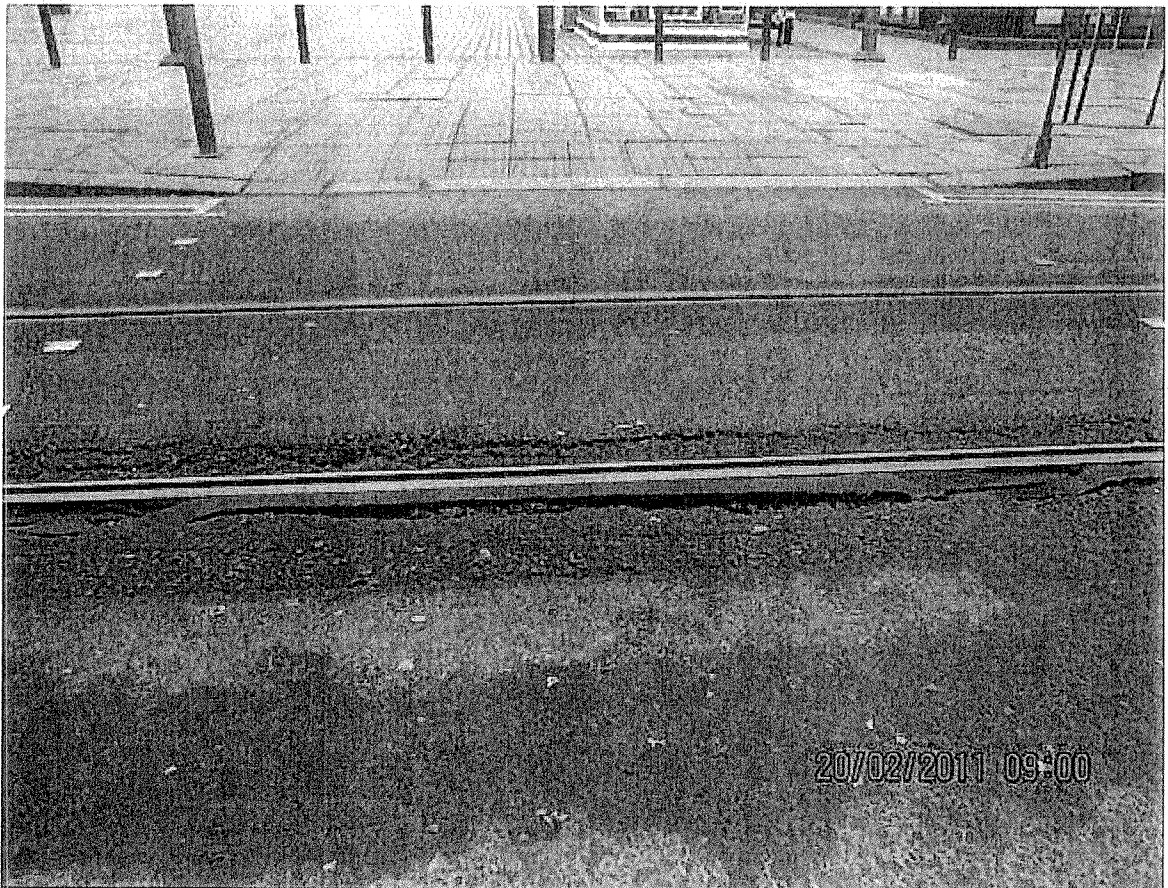
19/2/11 CONDITION CONTINUES TO DETERIORATE, PHOTO B

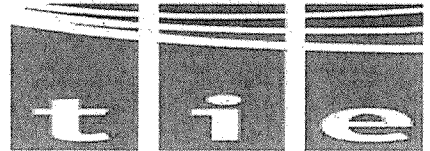
A





B





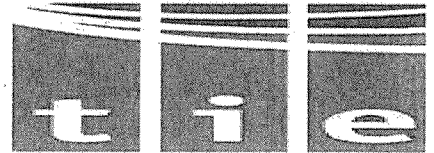
8.

12/2/11 Pedestrian crossing at Mound central island on Princes St
puddling badly and unusable, in need of urgent repair, PHOTO A

19/2/11 NO CHANGE, PHOTO B

A

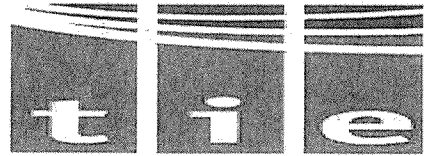




B



CONDITIONAL REPORT FOR PRINCES ST



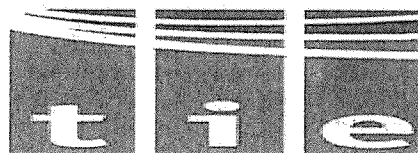
9.

12/2/11 Pedestrian crossing to Mound from Princes St, kerb stone sticking out of carriageway east bound causing trip hazard. PHOTO A

19/2/11 REMEDIAL REPAIR DONE BY BILFINGER, KERB REMOVED AND VOID FILLED WITH TAR, PHOTO B

A

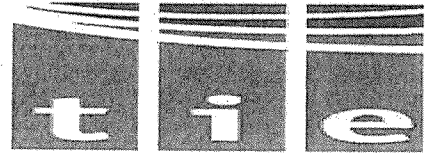




B



CONDITIONAL REPORT FOR PRINCES ST



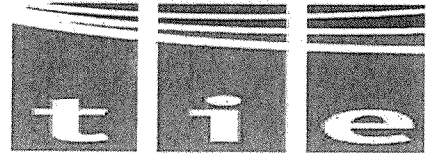
10.

12/2/11 Cobble grouting failing on both east and west bound carriageway at Tram Stop, PHOTO A

19/2/11 SAME CONDITION, PHOTO B

A

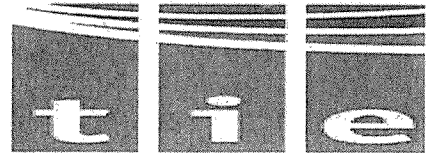




B



CONDITIONAL REPORT FOR PRINCES ST

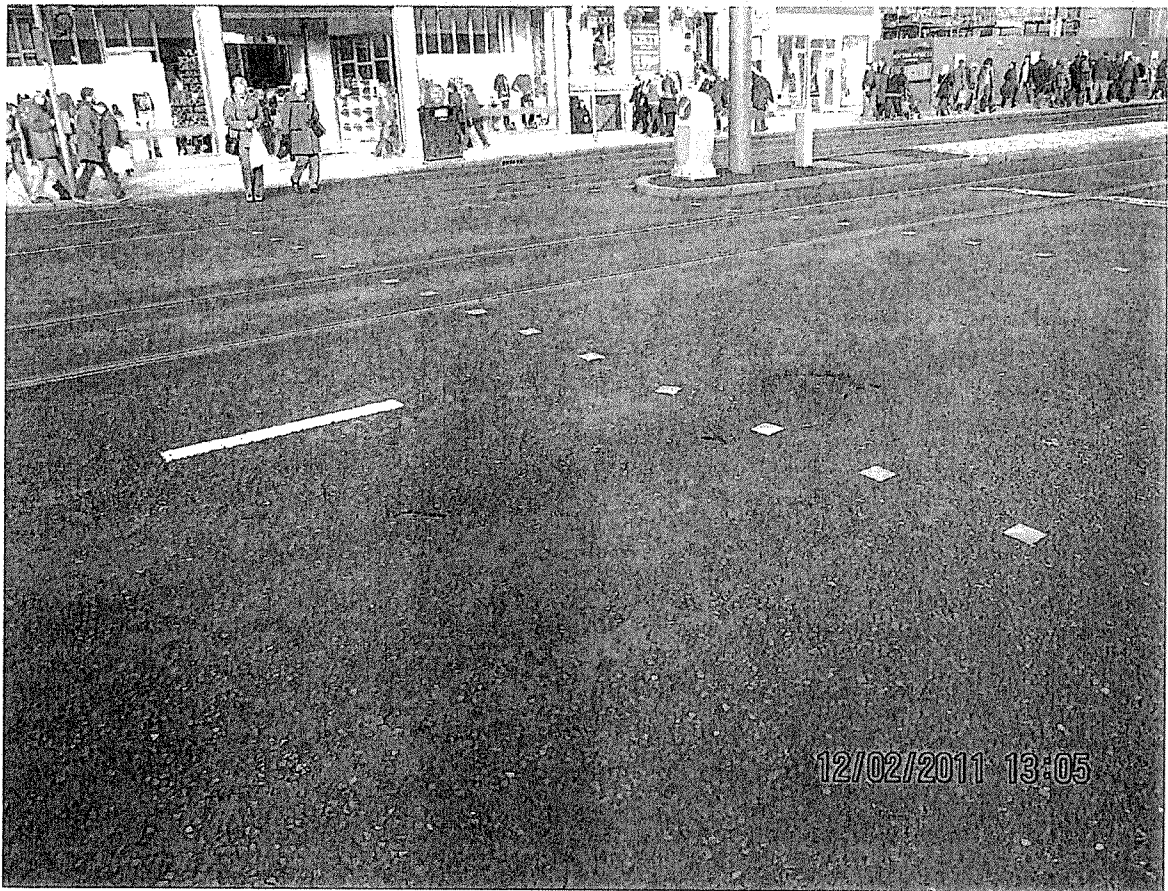


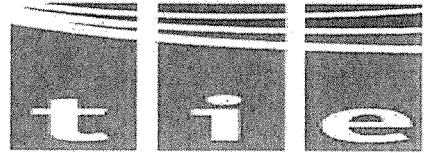
11.

12/2/11 Pedestrian Crossing from Fredrick St to South side Prince's St
on west bound carriageway showing sign of failure PHOTO A

19/2/11 SAME CONDITION, PHOTO B

A

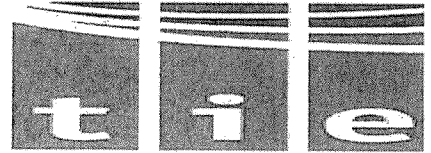




B



CONDITIONAL REPORT FOR PRINCES ST

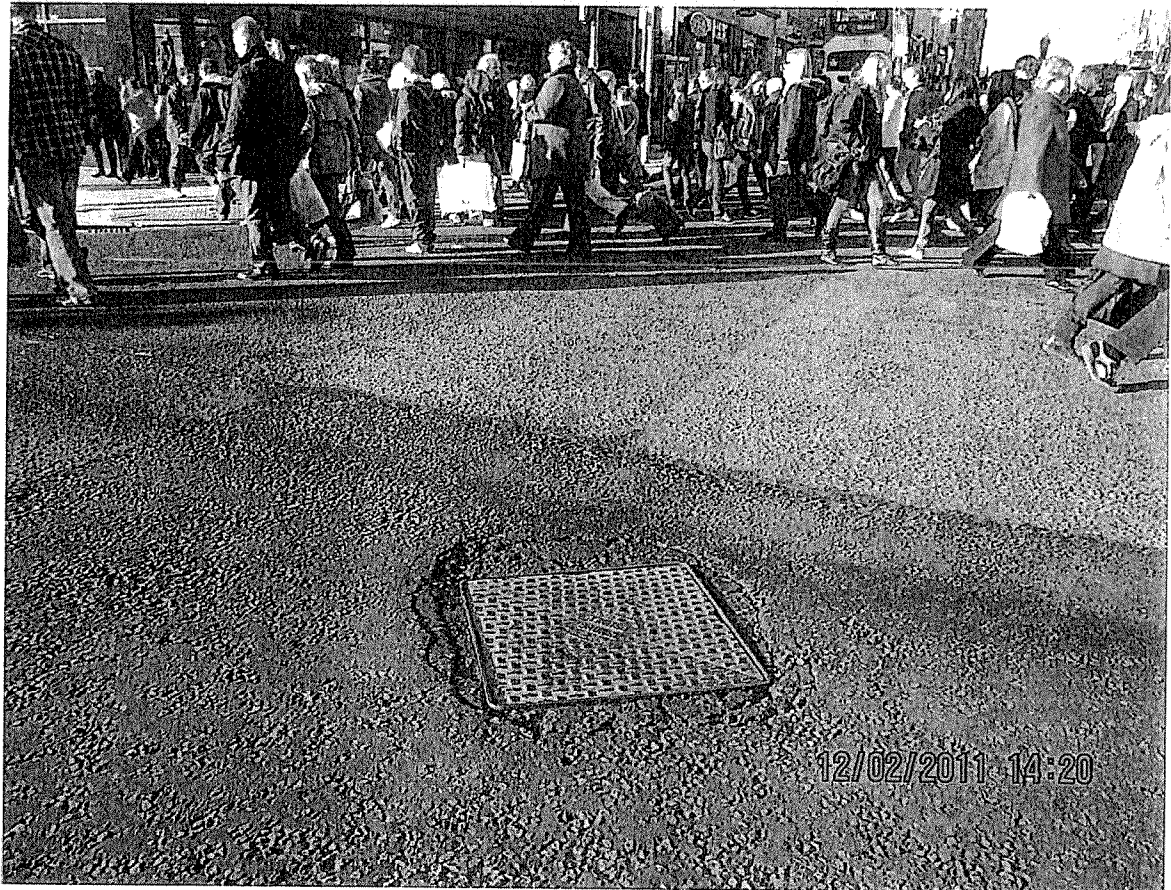


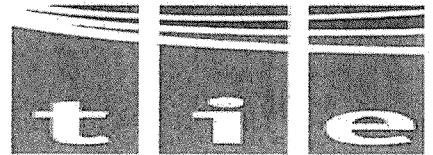
12.

12/2/11 Track side duct box failing at Fredrick St junction onto Princes St. PHOTO A

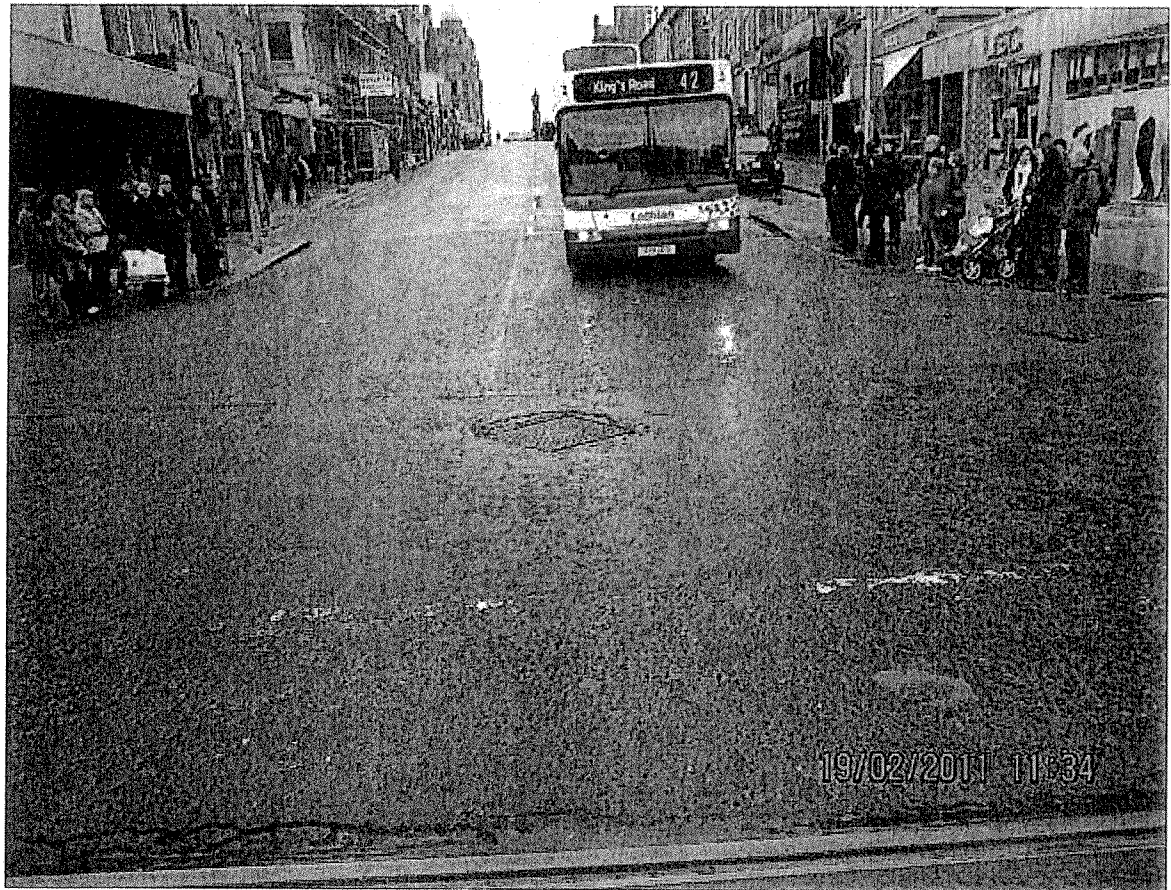
19/2/11 SAME CONDITION, PHOTO B

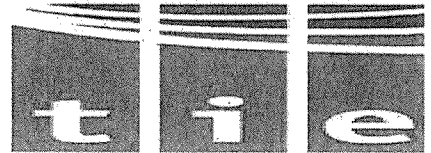
A





B

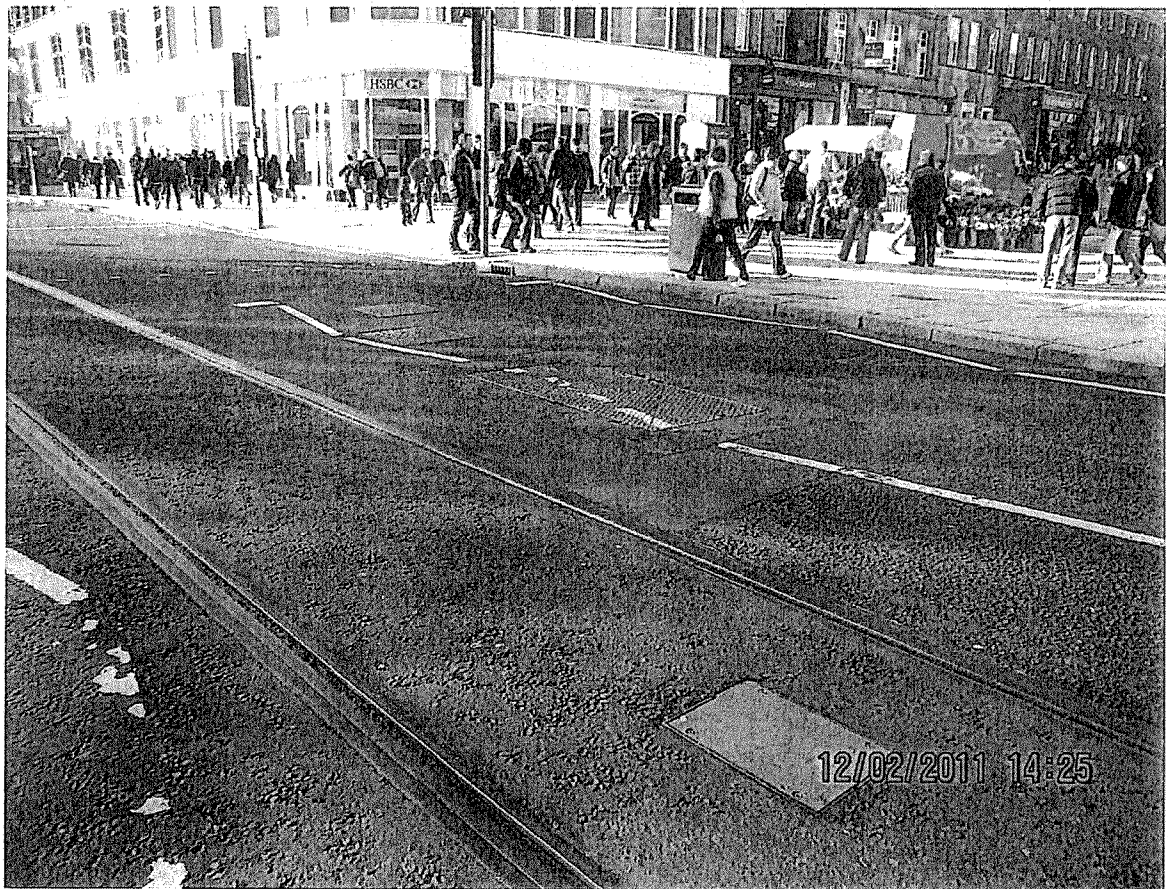


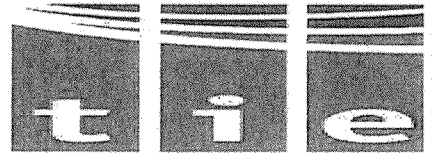


13.

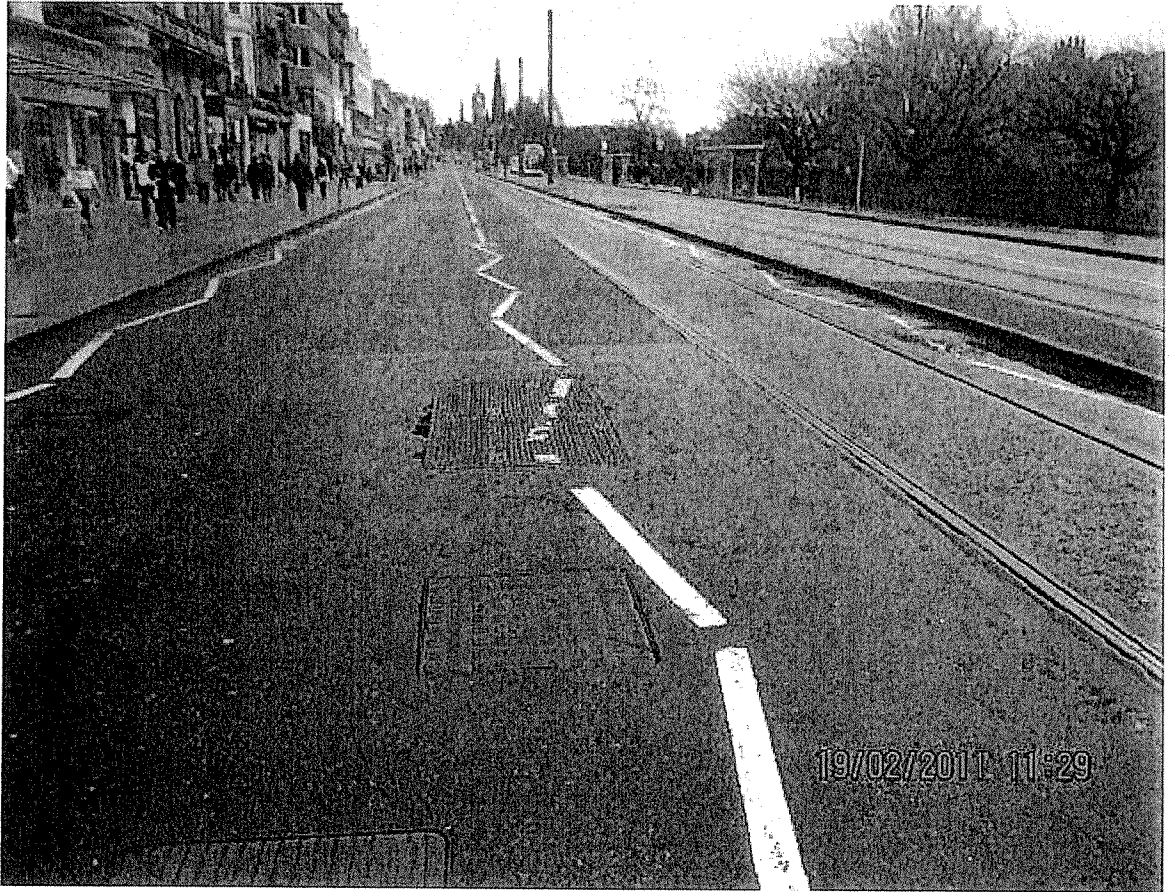
12/2/11 previously repaired tack side duct box east bound at east end
Castle St loose and noisy PHOTO A

A

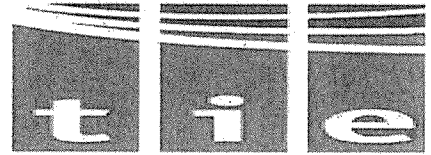




B



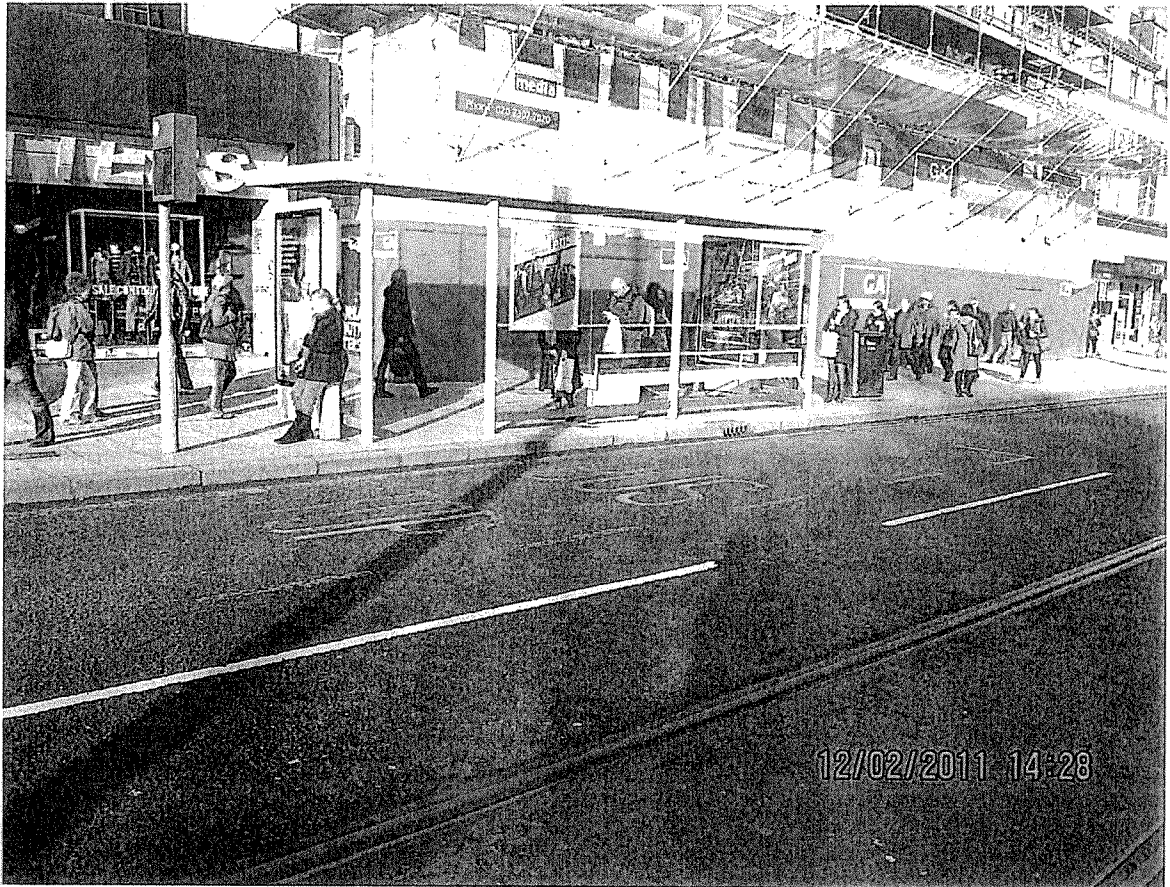
CONDITIONAL REPORT FOR PRINCES ST

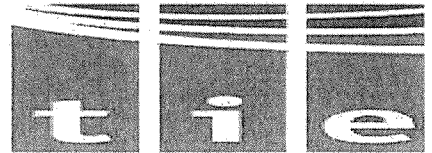


14.

12/2/11 All yellow carriageway marking needs redone, (check speck for life and liability)

19/2/11 SAME CONDITION





17.

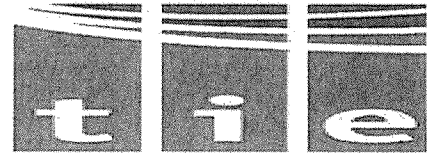
19/2/11 PREVIOUSLY REPAIRED SECTIONS SHOWING SIGNS OF NON-CONFORMANCE WHERE BILFINGER INCORPORATED SMA, NOW PITTING OUT BADLY

PHOT A THE MOUND 19/2/11

PHOTO B PEDESTRIAN CROSSING FROM PRINCES ST TO PRINCES ST GARDENS AT SOUTH CHARLOTTE ST 19/2/11

A





B

