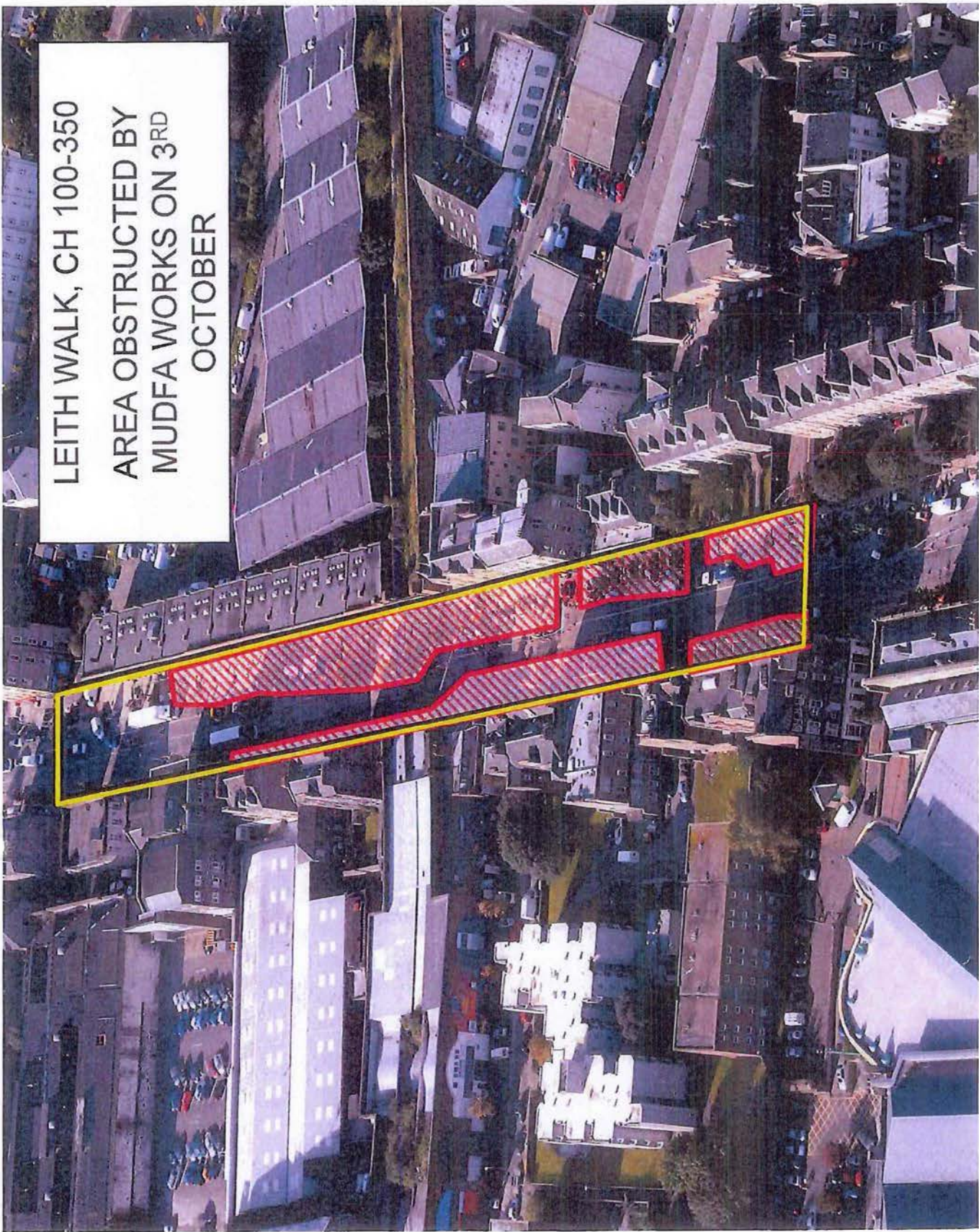


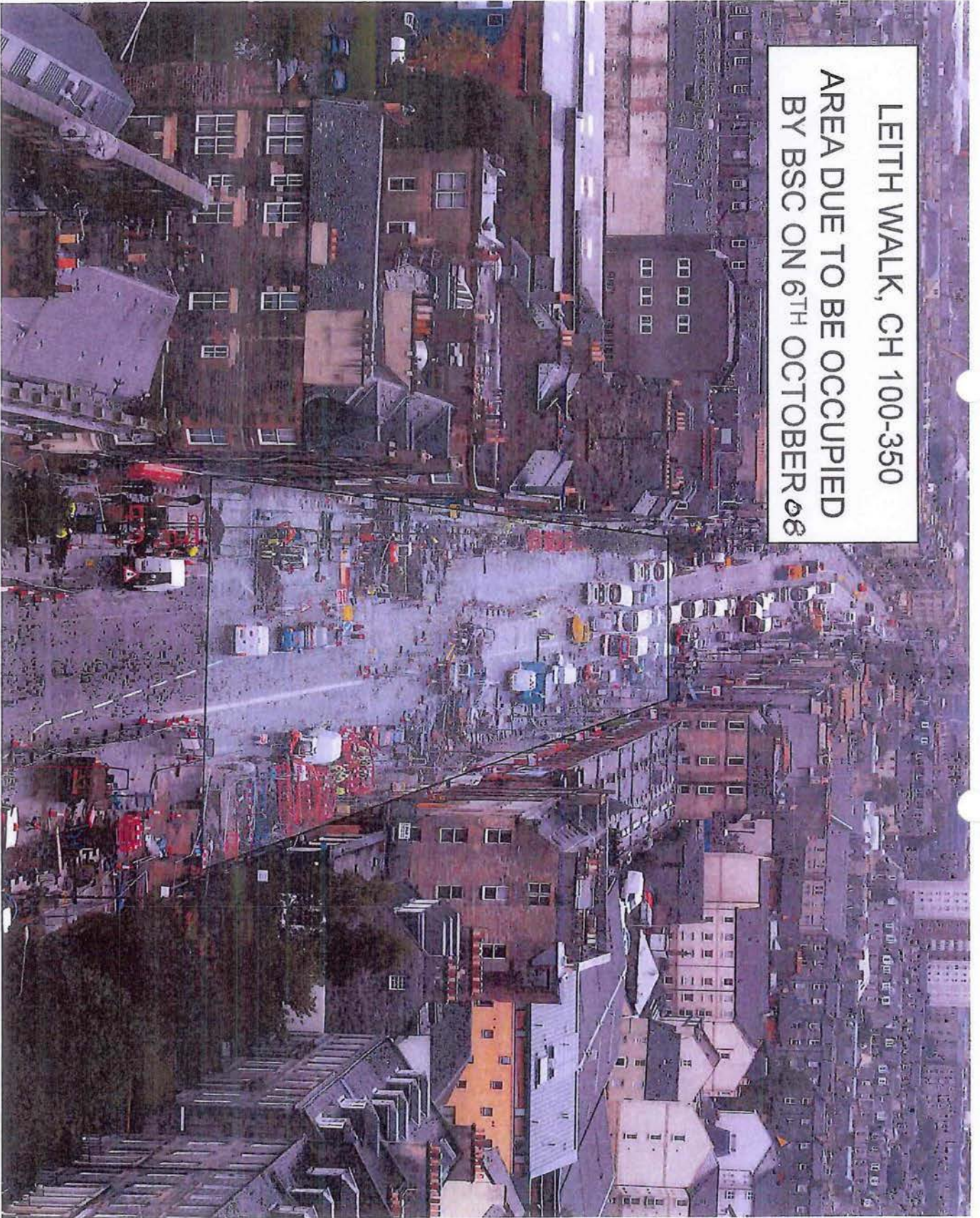
LEITH WALK
2ND OCTOBER 2008

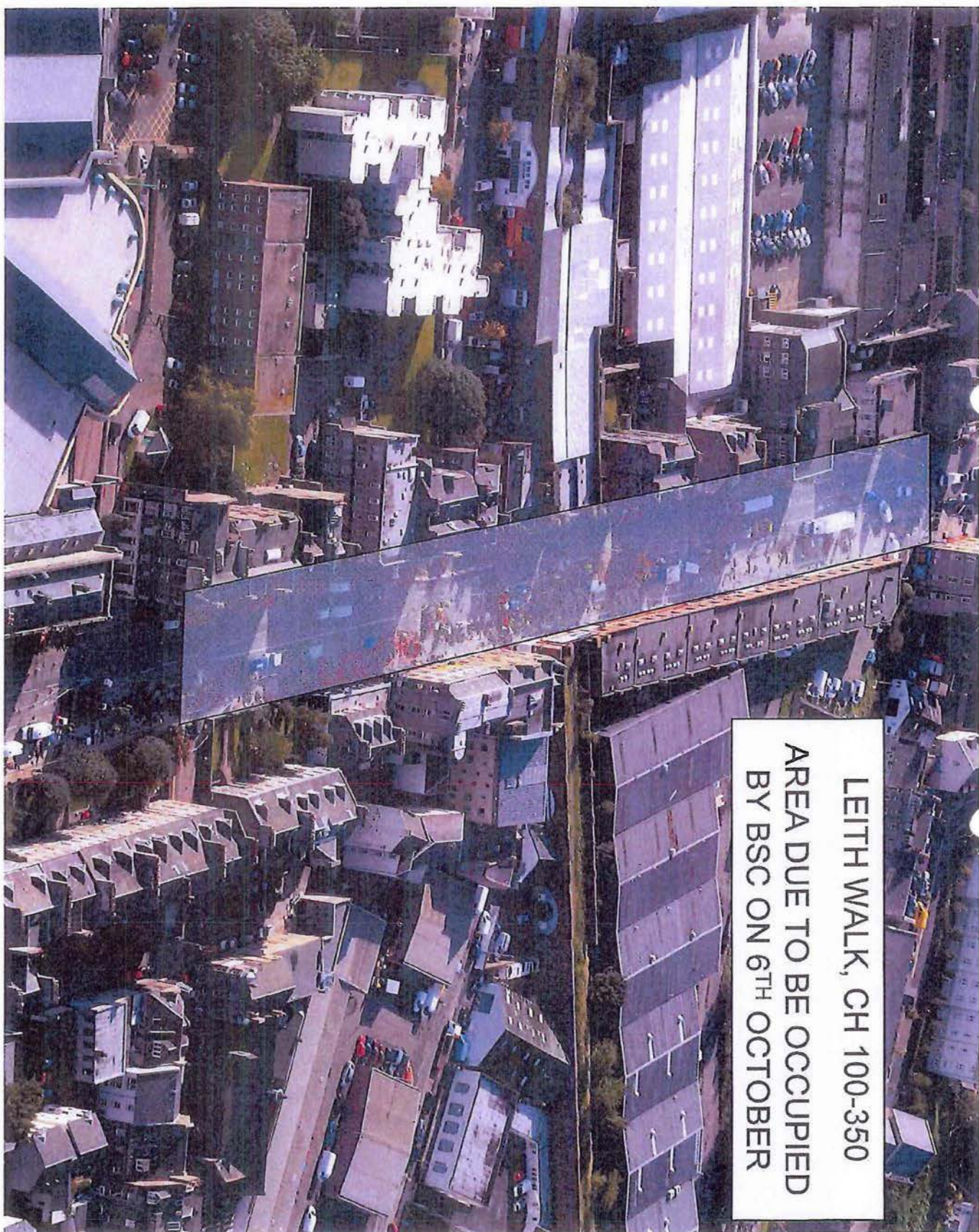
LEITH WALK, CH 100-350
AREA OBSTRUCTED BY
MUDFA WORKS ON 3RD
OCTOBER



2008

LEITH WALK, CH 100-350
AREA DUE TO BE OCCUPIED
BY BSC ON 6TH OCTOBER 08





LEITH WALK, CH 100-350
AREA DUE TO BE OCCUPIED
BY BSC ON 6TH OCTOBER



Photo 1, Telecoms ducts, gas pipe on kerb line



Photo 3, Traffic Light controller and cabling, required for MUDFA works



Photo 5, Incomplete water main (MUDFA)



Photo 6, Telecoms ducts

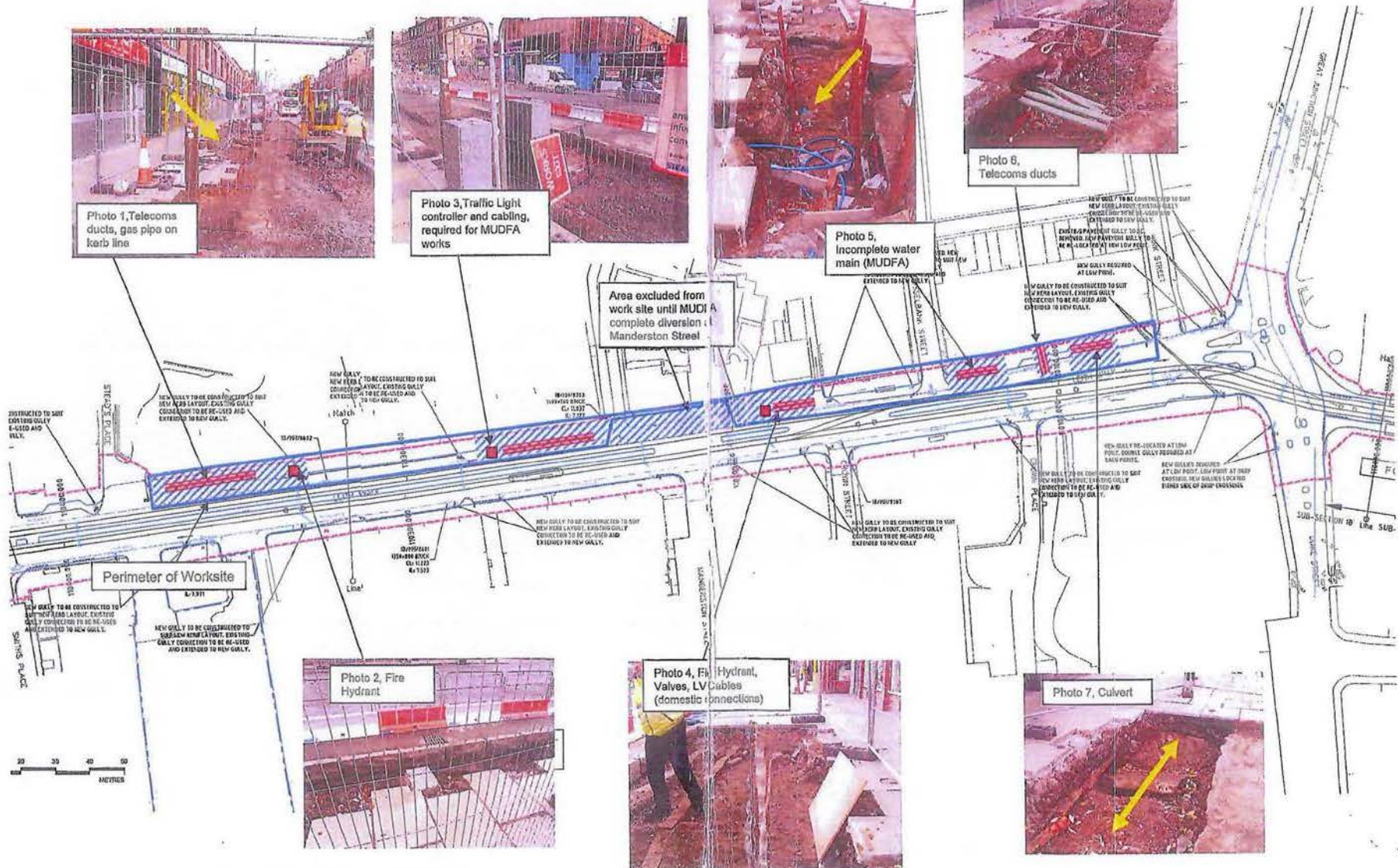


Photo 2, Fire Hydrant



Photo 4, Fire Hydrant, Valves, LV Cables (domestic connections)

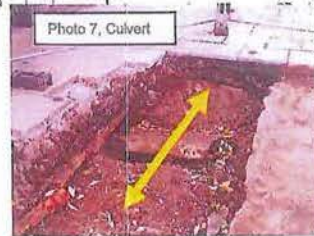


Photo 7, Culvert



Leith Walk, 23/10/08 : Obstructions to Infracore Works