

Contract Programme Tracked for V31 and V33 of Design Programme and Progress to 21 June 2008

EDINBURGH TRAM NETWORK



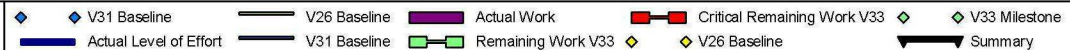
Activity ID	Activity Name	Start	Finish	Original Duration	Total Float	2008												2009				2010				2011			
						Qtr 4	Qtr 1	Qtr 2	Qtr 3	Qtr 4	Qtr 1	Qtr 2	Qtr 3	Qtr 4	Qtr 1	Qtr 2	Qtr 3	Qtr 4	Qtr 1	Qtr 2	Qtr 3	Qtr 4	Qtr 1	Qtr 2	Qtr 3	Qtr 4			
Edinburgh Tram Contract Programme Progress to 21 June 2008						18-Aug-08, Design Stage Consents																							
Design Stage Consents						18-Aug-08, Design Stage Consents																							
A17260	Forth Ports	27-Sep-07	18-Aug-08	100	7	Forth Ports																							
A17270	Network Rail	27-Sep-07	18-Aug-08	100	779	Network Rail																							
A17300	British Airports Authority	27-Sep-07	02-Jul-08	75	812	British Airports Authority																							
A17310	Stakis Hotels	27-Sep-07	18-Aug-08	100	186	Stakis Hotels																							
A17320	Other 3rd Parties	27-Sep-07	18-Aug-08	100	60	Other 3rd Parties																							
A17330	Network Rail APA		14-May-08	0		Network Rail APA																							
TIE Consents						16-Nov-09, TIE Consents																							
A17280	Obtain TTRO's	01-Oct-07	25-Apr-08	100		Obtain TTRO's																							
A17290	Obtain TRO's	01-Oct-07	16-Nov-09	350	306	Obtain TRO's																							
Advanced Works Contract						14-Aug-08, Advanced Works Contract																							
161	Award Advanced Works/Mobilisation Contract	01-Oct-07		0		Award Advanced Works/Mobilisation Contract																							
Finalise Contract in Accordance with Draft Deal						20-May-08 A, Finalise Contract in Accordance with Draft Deal																							
A1000	Staff And Office Running Costs	01-Oct-07	14-May-08	116		Staff And Office Running Costs																							
A1010	Instruct Legal Advise	05-Nov-07	14-May-08	75		Instruct Legal Advise																							
A1020	Instruct Remeasurement of Quantities for Fixed Price	05-Nov-07	14-May-08	75		Instruct Remeasurement of Quantities for Fixed Price																							
A1030	Integration of the Execution Schedules of SDS, TRAMCO, and MUDFA into BBS	03-Dec-07	14-May-08	55		Integration of the Execution Schedules of SDS, TRAMCO, and MUDFA into BBS																							
A1040	Method Statement	17-Dec-07	14-May-08	65		Method Statement																							
A1050	Insurance Certificate	14-May-08	20-May-08	5		Insurance Certificate																							
A1060	Advance Works Programme	04-Feb-08	11-Feb-08	6		Advance Works Programme																							
Mobilise Personnel / Project Management						14-May-08 A, Mobilise Personnel / Project Management																							
A1070	Project Staff Salaries and Expenses	05-Nov-07	14-May-08	106		Project Staff Salaries and Expenses																							
A1080	Recruitment Fees	26-Nov-07	14-May-08	80		Recruitment Fees																							
A1120	Develop Quality Assurance Manual	07-Jan-08	14-May-08	60		Develop Quality Assurance Manual																							
A17220	Develop Project Manual (E&M Part)	07-Jan-08	14-May-08	60		Develop Project Manual (E&M Part)																							
A17230	Develop Manual for E & M Project Management and Integration	07-Jan-08	14-May-08	60		Develop Manual for E & M Project Management and Integration																							
A17240	Develop Manual for Documentation Management	07-Jan-08	14-May-08	60		Develop Manual for Documentation Management																							
Review of SDS Design by BBS						14-May-08 A, Review of SDS Design by BBS																							
A1240	Benaim (Value Engineering)	05-Nov-07	03-Dec-07	20		Benaim (Value Engineering)																							
A1250	Review of Operation Concept	05-Nov-07	14-May-08	75		Review of Operation Concept																							

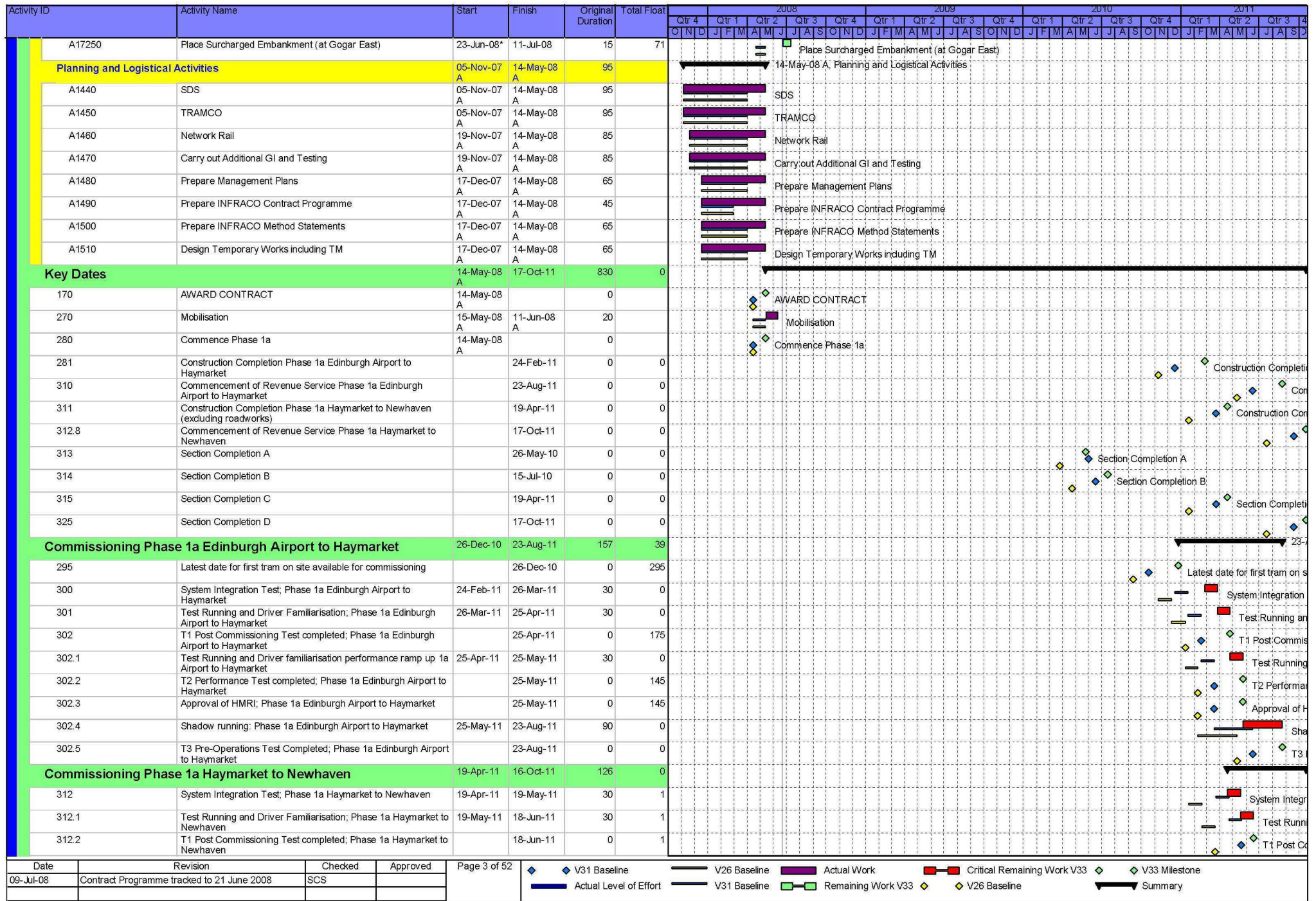
Date	Revision	Checked	Approved	Page 1 of 52	
09-Jul-08	Contract Programme tracked to 21 June 2008	SCS			

CEC00793593_0001

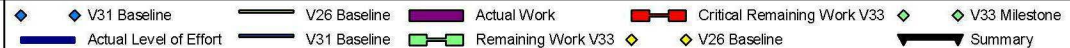
Activity ID	Activity Name	Start	Finish	Original Duration	Total Float	2008												2009				2010				2011			
						Qtr 4	Qtr 1	Qtr 2	Qtr 3	Qtr 4	Qtr 1	Qtr 2	Qtr 3	Qtr 4	Qtr 1	Qtr 2	Qtr 3	Qtr 4	Qtr 1	Qtr 2	Qtr 3	Qtr 4	Qtr 1	Qtr 2	Qtr 3	Qtr 4			
A1260	Review of Overall System Design Concepts	05-Nov-07	14-May-08	75		Review of Overall System Design Concepts																							
A1265	Review of Commissioning Procedures	05-Nov-07	14-May-08	75		Review of Commissioning Procedures																							
A1270	Review of System Design for E & M LOTS	05-Nov-07	14-May-08	75		Review of System Design for E & M LOTS																							
A1290	Finalisation of RST Parameters	05-Nov-07	14-May-08	75		Finalisation of RST Parameters																							
Undertake Procurement Activities		08-Feb-08	27-Jun-08	15	814	27-Jun-08; Undertake Procurement Activities																							
A1130	Place Order for Main Project Office Units	08-Feb-08	14-Feb-08	5		Place Order for Main Project Office Units																							
A1140	Place Order for BT Office Connection	23-Jun-08*	27-Jun-08	5	814	Place Order for BT Office Connection																							
A1150	Place Order for SP Office Power Connection	23-Jun-08*	27-Jun-08	5	814	Place Order for SP Office Power Connection																							
A1160	Place Advance Works Order with BARR Construction	23-Jun-08*	27-Jun-08	5	814	Place Advance Works Order with BARR Construction																							
A1170	Place Advance Works Order with RJ MCLEOD	23-Jun-08*	27-Jun-08	5	814	Place Advance Works Order with RJ MCLEOD																							
A1180	Place Advance Works Order with FARRANS	23-Jun-08*	27-Jun-08	5	814	Place Advance Works Order with FARRANS																							
A1190	Place Advance Works Order with GRAHAMS	23-Jun-08*	27-Jun-08	5	814	Place Advance Works Order with GRAHAMS																							
A1200	Place Advance Works order with AN Other	23-Jun-08*	27-Jun-08	5	814	Place Advance Works order with AN Other																							
A1210	Place Advance Works Order with AN Other	23-Jun-08*	27-Jun-08	5	814	Place Advance Works Order with AN Other																							
A1220	Place Order for Temporary Generator and Fuel Tank	23-Jun-08*	27-Jun-08	5	814	Place Order for Temporary Generator and Fuel Tank																							
A1230	Place Order for IT Hardware and Software	05-May-08	09-May-08	5		Place Order for IT Hardware and Software																							
Establish Site Offices		23-Jun-08	04-Jul-08	10	809	04-Jul-08; Establish Site Offices																							
A1370	Build Offices	23-Jun-08*	27-Jun-08	5	814	Build Offices																							
A1380	Fit Out Offices	23-Jun-08*	04-Jul-08	10	809	Fit Out Offices																							
Set Up Site		23-Jun-08	21-Jul-08	21	798	21-Jul-08; Set Up Site																							
A1300	Commence Sewer Connection	23-Jun-08*	04-Jul-08	10	809	Commence Sewer Connection																							
A1310	Security Fence and Light	23-Jun-08*	04-Jul-08	10	809	Security Fence and Light																							
A1320	Car Park and Access	23-Jun-08*	11-Jul-08	15	804	Car Park and Access																							
A1340	Plinth for Generator	23-Jun-08*	27-Jun-08	5	814	Plinth for Generator																							
A1350	Temporary Generator and Fuel Bowser	23-Jun-08*	27-Jun-08	5	814	Temporary Generator and Fuel Bowser																							
A1360	Install Foundations for Office Units	23-Jun-08*	21-Jul-08	20	826	Install Foundations for Office Units																							
Interface Allocation and Clarification between BBS, SDS, TRAMCO & 3rd Parties		05-Nov-07	14-Aug-08	75	782	14-Aug-08; Interface Allocation and Clarification between BBS, SDS, TRAMCO & 3rd Parties																							
A1580	Interface Allocation and Clarification between BBS, SDS, TRAMCO & 3rd Parties	05-Nov-07	14-Aug-08	75	782	Interface Allocation and Clarification between BBS, SDS, TRAMCO & 3rd Parties																							
Advance Construction Works		17-Mar-08	18-Jul-08	30	799	18-Jul-08; Advance Construction Works																							
A1520	Site Clearance Area 7 (trees and bushes)	27-Mar-08	23-Jun-08	10	58	Site Clearance Area 7 (trees and bushes)																							
A1525	Site Clearance Area 5 (trees and bushes)	17-Mar-08	02-Jul-08	10	812	Site Clearance Area 5 (trees and bushes)																							
A1530	Temporary Fencing Area 7	23-Jun-08*	18-Jul-08	20	799	Temporary Fencing Area 7																							
A1540	Plant Crossing (Castle Gogar Road)	23-Jun-08*	27-Jun-08	5	814	Plant Crossing (Castle Gogar Road)																							
A1550	Soil Strip	23-Jun-08*	27-Jun-08	5	814	Soil Strip																							
A1560	Excavate (at Depot)	23-Jun-08*	18-Jul-08	20	799	Excavate (at Depot)																							
A1570	Divert Cycleway at Gogarburn and erect hoarding (RBS Variation)	23-Jun-08*	11-Jul-08	15	804	Divert Cycleway at Gogarburn and erect hoarding (RBS Variation)																							

Date	Revision	Checked	Approved
09-Jul-08	Contract Programme tracked to 21 June 2008	SCS	



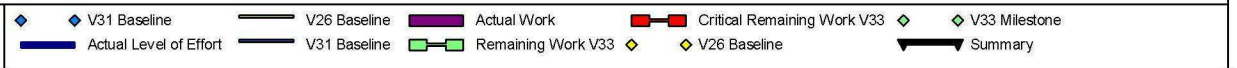


Date	Revision	Checked	Approved
09-Jul-08	Contract Programme tracked to 21 June 2008	SCS	



Activity ID	Activity Name	Start	Finish	Original Duration	Total Float	2008												2009												2010												2011												
						Qtr 4			Qtr 1			Qtr 2			Qtr 3			Qtr 4			Qtr 1			Qtr 2			Qtr 3			Qtr 4			Qtr 1			Qtr 2			Qtr 3			Qtr 4												
						O	N	D	J	F	M	A	M	J	J	A	S	O	N	D	J	F	M	A	M	J	J	A	S	O	N	D	J	F	M	A	M	J	J	A	S	O	N	D	J	F	M	A	M	J	J	A	S	
312.3	Test Running and Driver familiarisation performance ramp up 1a Haymarket to Newhaven	18-Jun-11	18-Jul-11	30	1																																																	Test RU
312.4	T2 Performance Test completed; Phase 1a Haymarket to Newhaven		18-Jul-11	0	1																																																	T2 Perf
312.5	Approval of HMRI; Phase 1a Haymarket to Newhaven		18-Jul-11	0	1																																																	Approv
312.6	Shadow running: Phase 1a Haymarket to Newhaven	18-Jul-11	16-Oct-11	90	1																																																	
312.7	T3 Pre-Operations Test Completed; Phase 1a Haymarket to Newhaven		16-Oct-11	0	1																																																	
M & E Design		21-Jun-08	27-Jan-10	390	429	27-Jan-10; M & E Design																																																
740	M & E Requirement Definition Phase Complete		21-Jun-08*	0	-51	M & E Requirement Definition Phase Complete																																																
750	M & E Preliminary Design Phase	21-Jun-08	20-Aug-08	60	1003	M & E Preliminary Design Phase																																																
760	M & E Review of Preliminary Design	20-Aug-08	19-Sep-08	30	1003	M & E Review of Preliminary Design																																																
770	M & E Detail Design Phase	19-Sep-08	18-Dec-08	90	1003	M & E Detail Design Phase																																																
780	M & E Review of Detailed Design	18-Dec-08	17-Jan-09	30	1003	M & E Review of Detailed Design																																																
790	M & E Design Freeze		17-Jan-09	0	1003	M & E Design Freeze																																																
Railway Electrification		23-Jun-08	27-Jan-10	390	26	27-Jan-10; Railway Electrification																																																
A17080	SDS Issue Track Alignment Drawings		23-Jun-08*	0	-77	SDS Issue Track Alignment Drawings																																																
A17090	Basic Design TPS	07-Jul-08	25-Nov-08	100	26	Basic Design TPS																																																
A17100	Detail Design TPS	02-Sep-08	04-Feb-09	100	26	Detail Design TPS																																																
A17110	Basic Design OCS	07-Jul-08	25-Nov-08	100	26	Basic Design OCS																																																
A17120	Detail Design OCS	02-Sep-08	04-Feb-09	100	26	Detail Design OCS																																																
A17130	Procurement	30-Sep-08	04-Mar-09	100	26	Procurement																																																
A17140	Manufacturing	28-Oct-08	17-Nov-09	260	26	Manufacturing																																																
A17150	Dispatch	04-Feb-09	27-Jan-10	240	26	Dispatch																																																
A17160	SDS Design OLE Foundations	14-Oct-08	18-Mar-09	100	27	SDS Design OLE Foundations																																																
MUDFA & UTILITIES		23-May-08	19-Dec-08	137	692	19-Dec-08; MUDFA & UTILITIES																																																
180	MUDFA & Utilities work area 1 completion		31-Oct-08*	0	91	MUDFA & Utilities work area 1 completion																																																
190	MUDFA & Utilities work area 2 completion		01-Aug-08*	0	91	MUDFA & Utilities work area 2 completion																																																
200	MUDFA & Utilities work for sub section 1C		31-Oct-08*	0	147	MUDFA & Utilities work for sub section 1C																																																
210	MUDFA & Utilities work for sub section 1D		19-Dec-08*	0	54	MUDFA & Utilities work for sub section 1D																																																
220	MUDFA & Utilities work area 5		21-Jun-08*	0	1213	MUDFA & Utilities work area 5																																																
230	MUDFA & Utilities work for sub section 5B		21-Jun-08*	0	27	MUDFA & Utilities work for sub section 5B																																																
240	MUDFA & Utilities work for sub section 5C		21-Jun-08*	0	124	MUDFA & Utilities work for sub section 5C																																																
245	Depot SGN Diversion		23-May-08	0		Depot SGN Diversion																																																
255	Depot Watermain Diversion		21-Jun-08*	0	-21	Depot Watermain Diversion																																																
260	MUDFA & Utilities work area 9 completion		21-Jun-08*	0	123	MUDFA & Utilities work area 9 completion																																																
Third Party Notice Periods		21-Jun-08	08-Sep-09	300	519	08-Sep-09; Third Party Notice Periods																																																
A14170	ADM Milling	21-Oct-08	18-Nov-08	28	1056	ADM Milling																																																
A14180	CGM Edinburgh Ltd.	12-Aug-08	09-Sep-08	28	1126	CGM Edinburgh Ltd.																																																

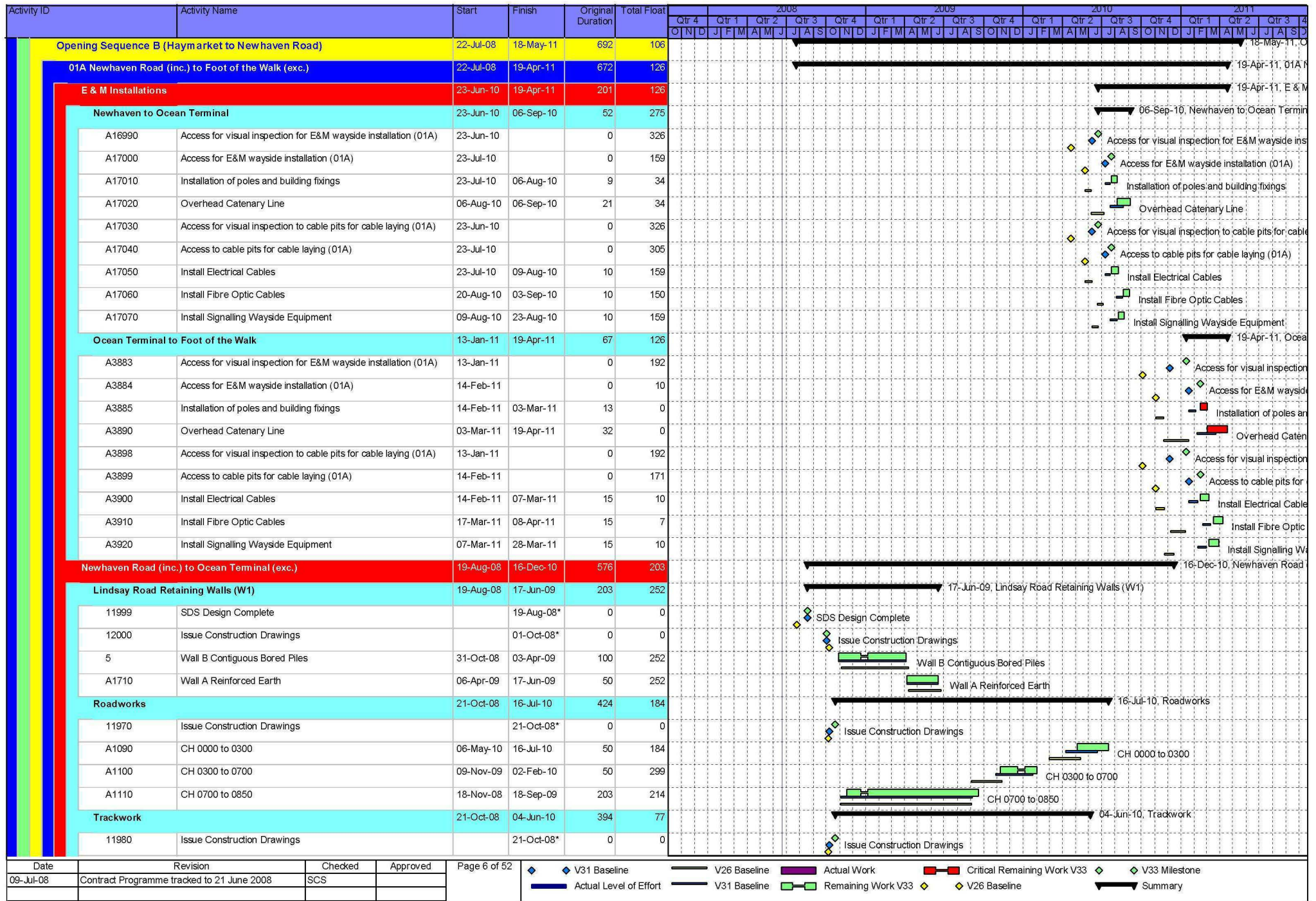
Date	Revision	Checked	Approved
09-Jul-08	Contract Programme tracked to 21 June 2008	SCS	



CEC00793593_0005

Activity ID	Activity Name	Start	Finish	Original Duration	Total Float	2008																2009				2010				2011							
						Qtr 4	Qtr 1	Qtr 2	Qtr 3	Qtr 4	Qtr 1	Qtr 2	Qtr 3	Qtr 4	Qtr 1	Qtr 2	Qtr 3	Qtr 4	Qtr 1	Qtr 2	Qtr 3	Qtr 4	Qtr 1	Qtr 2	Qtr 3	Qtr 4	Qtr 1	Qtr 2	Qtr 3	Qtr 4							
A14190	Forth Ports	03-Oct-08	31-Oct-08	28	1074	Gantt chart for Forth Ports (Oct 2008 - Oct 2008)																															
A14200	ICAS	21-Jun-08	22-Dec-08	184	1021	Gantt chart for ICAS (Jun 2008 - Dec 2008)																															
A14210	Kenmore Capital	12-Aug-08	09-Sep-08	28	1126	Gantt chart for Kenmore Capital (Aug 2008 - Sep 2008)																															
A14220	Land Securities Trillium	06-Dec-08	05-Jan-09	28	1010	Gantt chart for Land Securities Trillium (Dec 2008 - Jan 2009)																															
A14230	NULAP	09-Jul-08	09-Sep-08	62	1126	Gantt chart for NULAP (Jul 2008 - Sep 2008)																															
A14240	Ocean Terminal	11-Aug-09	08-Sep-09	28	765	Gantt chart for Ocean Terminal (Aug 2009 - Sep 2009)																															
A14250	Royal Yacht Britannia	11-Aug-09	08-Sep-09	28	765	Gantt chart for Royal Yacht Britannia (Aug 2009 - Sep 2009)																															
A14260	Trustees of City Point	12-Aug-08	09-Sep-08	28	1126	Gantt chart for Trustees of City Point (Aug 2008 - Sep 2008)																															
A14270	Verity Trustees	12-Aug-08	09-Sep-08	28	1126	Gantt chart for Verity Trustees (Aug 2008 - Sep 2008)																															
A14280	CGM Edinburgh Ltd	12-Aug-08	09-Sep-08	28	1126	Gantt chart for CGM Edinburgh Ltd (Aug 2008 - Sep 2008)																															
A14350	BAA	21-Jun-08	19-Jul-08	28	1177	Gantt chart for BAA (Jun 2008 - Jul 2008)																															
A14360	Clerical Medical Investment Group	05-Aug-08	02-Sep-08	28	1133	Gantt chart for Clerical Medical Investment Group (Aug 2008 - Sep 2008)																															
A14370	Jenners (JPSE)	23-Feb-09	23-Mar-09	28	933	Gantt chart for Jenners (JPSE) (Feb 2009 - Mar 2009)																															
A14380	Murrayfield Indoor Sports Centre	21-Jun-08	19-Jul-08	28	1177	Gantt chart for Murrayfield Indoor Sports Centre (Jun 2008 - Jul 2008)																															
A14390	NEL & EPML	18-Aug-08	15-Sep-08	28	1120	Gantt chart for NEL & EPML (Aug 2008 - Sep 2008)																															
A14400	Royal Mail	22-Jul-08	19-Aug-08	28	1147	Gantt chart for Royal Mail (Jul 2008 - Aug 2008)																															
A14410	Safeway - Morrisons	13-Oct-08	10-Nov-08	28	1064	Gantt chart for Safeway - Morrisons (Oct 2008 - Nov 2008)																															
A14420	SRU	21-Jun-08	19-Jul-08	28	1177	Gantt chart for SRU (Jun 2008 - Jul 2008)																															
A14430	UGC Properties	19-Aug-08	16-Sep-08	28	1119	Gantt chart for UGC Properties (Aug 2008 - Sep 2008)																															
A14440	Universities Superannuation Scheme	18-Aug-08	15-Sep-08	28	1120	Gantt chart for Universities Superannuation Scheme (Aug 2008 - Sep 2008)																															
A14450	West Craigs Ltd	21-Jun-08	19-Jul-08	28	1177	Gantt chart for West Craigs Ltd (Jun 2008 - Jul 2008)																															
A14470	NIL	06-Dec-08	05-Jan-09	28	1010	Gantt chart for NIL (Dec 2008 - Jan 2009)																															
A14500	Adshel	21-Jun-08	22-Jul-08	31	1174	Gantt chart for Adshel (Jun 2008 - Jul 2008)																															
A14510	BT	21-Jun-08	19-Jul-08	28	1177	Gantt chart for BT (Jun 2008 - Jul 2008)																															
A14520	Cable & Wireless	21-Jun-08	19-Jul-08	28	1177	Gantt chart for Cable & Wireless (Jun 2008 - Jul 2008)																															
A14530	Easynet Telecomms Ltd.	21-Jun-08	19-Jul-08	28	1177	Gantt chart for Easynet Telecomms Ltd. (Jun 2008 - Jul 2008)																															
A14540	Historic Scotland	21-Jun-08	19-Jul-08	28	1177	Gantt chart for Historic Scotland (Jun 2008 - Jul 2008)																															
A14550	Network rail	16-Sep-08	14-Oct-08	28	1090	Gantt chart for Network rail (Sep 2008 - Oct 2008)																															
A14560	NTL	21-Jun-08	19-Jul-08	28	1177	Gantt chart for NTL (Jun 2008 - Jul 2008)																															
A14570	Royal Mail	21-Jun-08	19-Sep-08	90	1115	Gantt chart for Royal Mail (Jun 2008 - Sep 2008)																															
A14580	Scotrail	21-Jun-08	19-Jul-08	28	1177	Gantt chart for Scotrail (Jun 2008 - Jul 2008)																															
A14590	Scottish Water	21-Jun-08	19-Jul-08	28	1177	Gantt chart for Scottish Water (Jun 2008 - Jul 2008)																															
A14600	Thus	21-Jun-08	19-Jul-08	28	1177	Gantt chart for Thus (Jun 2008 - Jul 2008)																															
A14610	Transco	21-Jun-08	19-Jul-08	28	1177	Gantt chart for Transco (Jun 2008 - Jul 2008)																															
A14620	Roseburn Garage	21-Jun-08	22-Dec-08	184	1021	Gantt chart for Roseburn Garage (Jun 2008 - Dec 2008)																															
SECTION 01 NEWHAVEN ROAD TO HAYMARKET		22-Jul-08	18-May-11	692	106	Summary bar for Section 01																															

Date	Revision	Checked	Approved	Page 5 of 52								
09-Jul-08	Contract Programme tracked to 21 June 2008	SCS										



Date	Revision	Checked	Approved	Page 6 of 52	
09-Jul-08	Contract Programme tracked to 21 June 2008	SCS			

Activity ID	Activity Name	Start	Finish	Original Duration	Total Float	2008												2009												2010												2011											
						Qtr 4			Qtr 1			Qtr 2			Qtr 3			Qtr 4			Qtr 1			Qtr 2			Qtr 3			Qtr 4			Qtr 1			Qtr 2			Qtr 3			Qtr 4											
						O	N	D	J	F	M	A	M	J	J	A	S	O	N	D	J	F	M	A	M	J	J	A	S	O	N	D	J	F	M	A	M	J	J	A	S	O	N	D	J	F	M	A	M	J	J	A	S
Ch 0-265						06-May-10, Ch 0-265																																															
A15970	Establish Traffic Management & Temp. Fencing	15-Jan-10	06-May-10	77	97	Establish Traffic Management & Temp. Fencing																																															
A15980	Excavate box	19-Jan-10	03-Feb-10	11	113	Excavate box																																															
A15990	Excavate, lay and concrete ducts	03-Feb-10	25-Feb-10	16	113	Excavate, lay and concrete ducts																																															
A16000	Excavate and construct OLE bases	03-Feb-10	25-Feb-10	16	113	Excavate and construct OLE bases																																															
A16010	Set Track (265m)	16-Mar-10	21-Apr-10	25	0	Set Track (265m)																																															
A16020	Place upper concrete and cure	19-Mar-10	26-Apr-10	25	97	Place upper concrete and cure																																															
A16030	Street Surface finishes	26-Apr-10	05-May-10	6	97	Street Surface finishes																																															
A16040	Remove fencing and Traffic Management	05-May-10	06-May-10	1	97	Remove fencing and Traffic Management																																															
Ch 265-425						09-Nov-09, Ch 265-425																																															
A15890	Establish Traffic Management & Temp. Fencing	26-Aug-09	28-Aug-09	2	169	Establish Traffic Management & Temp. Fencing																																															
A15900	Excavate box	28-Aug-09	07-Sep-09	6	169	Excavate box																																															
A15910	Excavate, lay and concrete ducts	07-Sep-09	18-Sep-09	9	169	Excavate, lay and concrete ducts																																															
A15920	Excavate and construct OLE bases	07-Sep-09	18-Sep-09	9	169	Excavate and construct OLE bases																																															
A15930	Set Track (160m)	09-Oct-09	26-Oct-09	11	16	Set Track (160m)																																															
A15940	Place upper concrete and cure	14-Oct-09	29-Oct-09	11	151	Place upper concrete and cure																																															
A15950	Street Surface finishes	29-Oct-09	06-Nov-09	6	151	Street Surface finishes																																															
A15960	Remove fencing and Traffic Management	06-Nov-09	09-Nov-09	1	151	Remove fencing and Traffic Management																																															
Ch 425-475						26-May-09, Ch 425-475																																															
A15810	Establish Traffic Management & Temp. Fencing	14-Apr-09	16-Apr-09	2	30	Establish Traffic Management & Temp. Fencing																																															
A15820	Excavate box	16-Apr-09	20-Apr-09	2	30	Excavate box																																															
A15830	Excavate, lay and concrete ducts	20-Apr-09	23-Apr-09	3	30	Excavate, lay and concrete ducts																																															
A15840	Excavate and construct OLE bases	20-Apr-09	23-Apr-09	3	30	Excavate and construct OLE bases																																															
A15850	Set Track (50m)	07-May-09	14-May-09	5	21	Set Track (50m)																																															
A15860	Place upper concrete and cure	12-May-09	19-May-09	5	234	Place upper concrete and cure																																															
A15870	Street Surface finishes	19-May-09	22-May-09	3	234	Street Surface finishes																																															
A15880	Remove fencing and Traffic Management	22-May-09	26-May-09	1	234	Remove fencing and Traffic Management																																															
Ch 475-600						14-Apr-09, Ch 475-600																																															
A15730	Establish Traffic Management & Temp. Fencing	12-Feb-09	16-Feb-09	2	32	Establish Traffic Management & Temp. Fencing																																															
A15740	Excavate box	16-Feb-09	23-Feb-09	5	32	Excavate box																																															
A15750	Excavate, lay and concrete ducts	23-Feb-09	05-Mar-09	8	32	Excavate, lay and concrete ducts																																															
A15760	Excavate and construct OLE bases	23-Feb-09	05-Mar-09	8	32	Excavate and construct OLE bases																																															
A15770	Set Track (125m)	16-Mar-09	30-Mar-09	10	25	Set Track (125m)																																															
A15780	Place upper concrete and cure	19-Mar-09	02-Apr-09	10	30	Place upper concrete and cure																																															
A15790	Street Surface finishes	02-Apr-09	13-Apr-09	6	30	Street Surface finishes																																															
A15800	Remove fencing and Traffic Management	13-Apr-09	14-Apr-09	1	30	Remove fencing and Traffic Management																																															

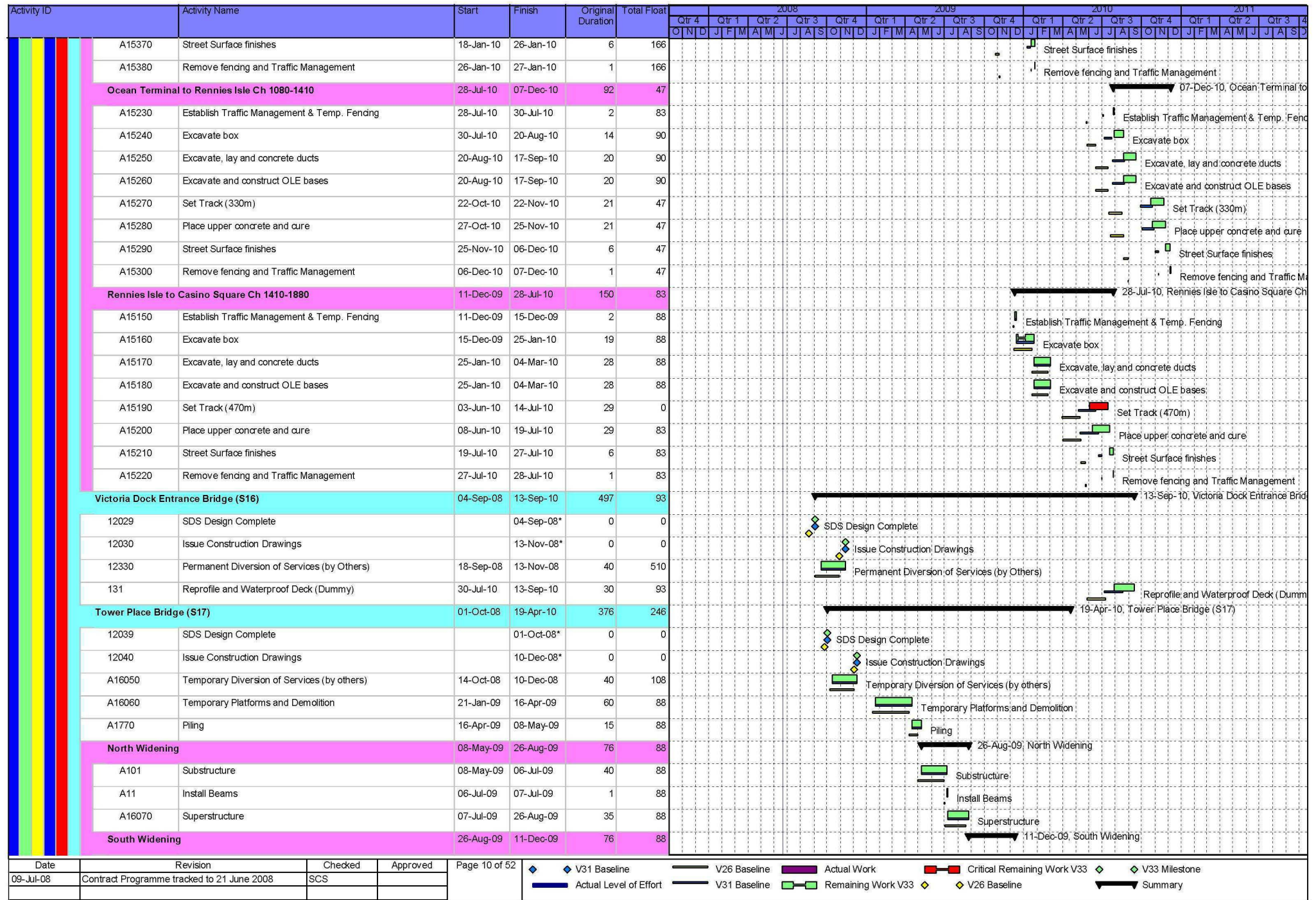
Date	Revision	Checked	Approved
09-Jul-08	Contract Programme tracked to 21 June 2008	SCS	

◆ V31 Baseline V26 Baseline Actual Work Critical Remaining Work V33 ◆ V33 Milestone
 Actual Level of Effort V31 Baseline Remaining Work V33 ◆ V26 Baseline Summary

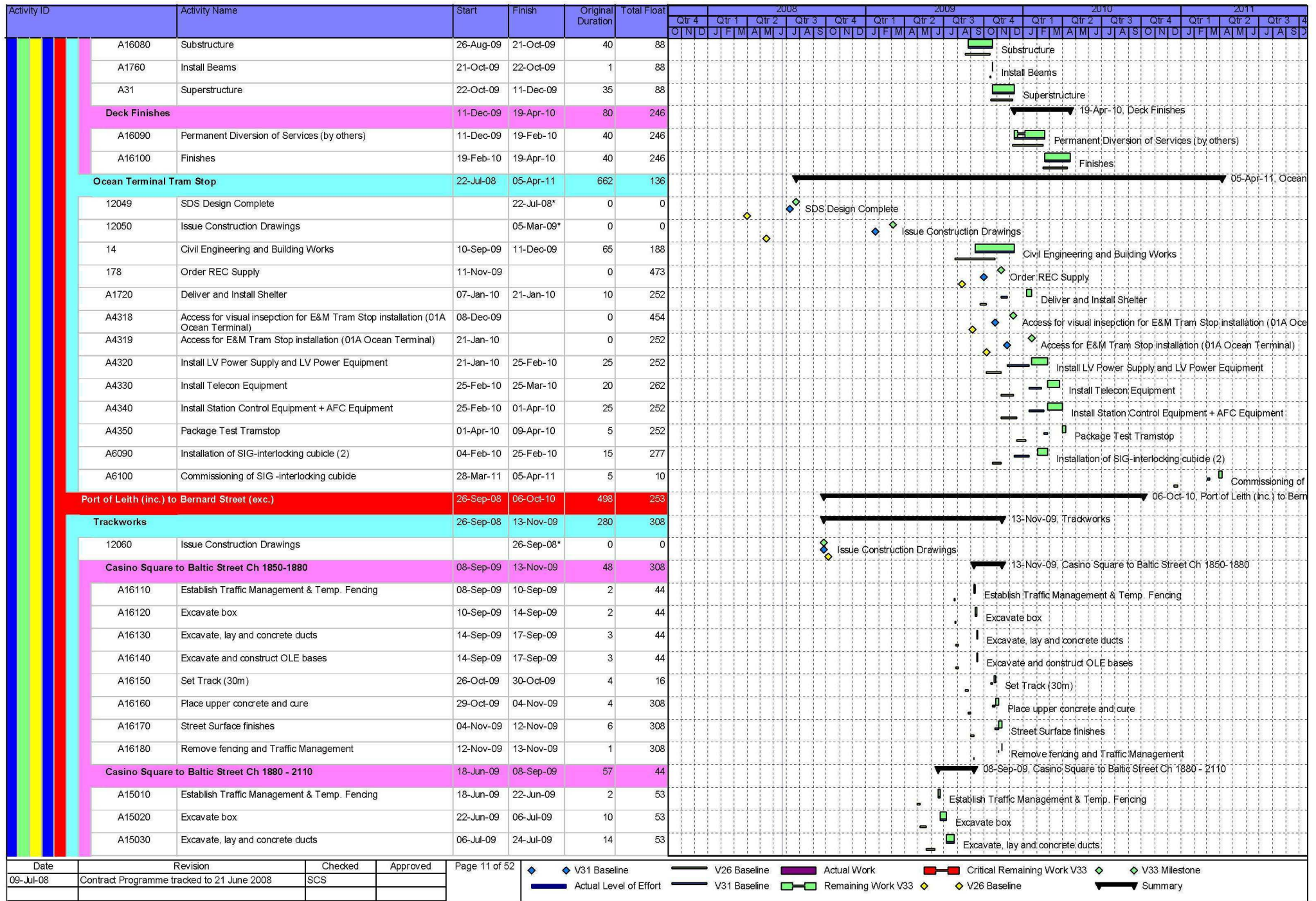
Activity ID	Activity Name	Start	Finish	Original Duration	Total Float	2008																2009																2010																2011															
						Qtr 4				Qtr 1				Qtr 2				Qtr 3				Qtr 4				Qtr 1				Qtr 2				Qtr 3				Qtr 4				Qtr 1				Qtr 2				Qtr 3				Qtr 4															
						O	N	D	J	J	F	M	A	M	J	J	A	S	O	N	D	J	F	M	A	M	J	J	A	S	O	N	D	J	F	M	A	M	J	J	A	S	O	N	D	J	F	M	A	M	J	J	A	S	O														
Ch 600-700		18-Nov-08	12-Feb-09	51	32	12-Feb-09, Ch 600-700																																																															
A15650	Establish Traffic Management & Temp. Fencing	18-Nov-08	20-Nov-08	2	42	Establish Traffic Management & Temp. Fencing																																																															
A15660	Excavate box	20-Nov-08	26-Nov-08	4	42	Excavate box																																																															
A15670	Excavate, lay and concrete ducts	26-Nov-08	05-Dec-08	6	42	Excavate, lay and concrete ducts																																																															
A15680	Excavate and construct OLE bases	26-Nov-08	05-Dec-08	6	42	Excavate and construct OLE bases																																																															
A15690	Set Track (100m)	19-Jan-09	29-Jan-09	8	21	Set Track (100m)																																																															
A15700	Place upper concrete and cure	22-Jan-09	03-Feb-09	8	32	Place upper concrete and cure																																																															
A15710	Street Surface finishes	03-Feb-09	11-Feb-09	6	32	Street Surface finishes																																																															
A15720	Remove fencing and Traffic Management	11-Feb-09	12-Feb-09	1	32	Remove fencing and Traffic Management																																																															
Ch 700-850		19-Mar-10	04-Jun-10	52	77	04-Jun-10, Ch 700-850																																																															
A15570	Establish Traffic Management & Temp. Fencing	19-Mar-10	23-Mar-10	2	95	Establish Traffic Management & Temp. Fencing																																																															
A15580	Excavate box	23-Mar-10	31-Mar-10	6	95	Excavate box																																																															
A15590	Excavate, lay and concrete ducts	31-Mar-10	14-Apr-10	9	95	Excavate, lay and concrete ducts																																																															
A15600	Excavate and construct OLE bases	31-Mar-10	14-Apr-10	9	95	Excavate and construct OLE bases																																																															
A15610	Set Track (150m)	06-May-10	20-May-10	10	4	Set Track (150m)																																																															
A15620	Place upper concrete and cure	11-May-10	25-May-10	10	77	Place upper concrete and cure																																																															
A15630	Street Surface finishes	25-May-10	03-Jun-10	6	77	Street Surface finishes																																																															
A15640	Remove fencing and Traffic Management	03-Jun-10	04-Jun-10	1	77	Remove fencing and Traffic Management																																																															
Newhaven Road Tram stop		05-Feb-09	16-Dec-10	465	203	16-Dec-10, Newhaven Road																																																															
11990	Issue Construction Drawings		05-Feb-09*	0	0	Issue Construction Drawings																																																															
8	Civil and Building Works	06-May-10	09-Aug-10	65	129	Civil and Building Works																																																															
98	Order REC Supply	04-Aug-10		0	298	Order REC Supply																																																															
A1680	Deliver and Install Shelter	15-Sep-10	29-Sep-10	10	77	Deliver and Install Shelter																																																															
A4288	Access for visual inspection for E&M Tram Stop installation (01A Newhaven Road)	30-Aug-10		0	279	Access for visual inspection for E&M Tram Stop installation																																																															
A4289	Access for E&M Tram Stop installation (01A Newhaven Road)	29-Sep-10		0	77	Access for E&M Tram Stop installation																																																															
A4290	Install LV Power Supply and LV Power Equipment	29-Sep-10	03-Nov-10	25	77	Install LV Power Supply and LV Power Equipment																																																															
A4300	Install Telecon Equipment	03-Nov-10	02-Dec-10	20	87	Install Telecon Equipment																																																															
A4310	Install Station Control Equipment + AFC Equipment	03-Nov-10	09-Dec-10	25	77	Install Station Control Equipment																																																															
A4315	Package Test Tramstop	09-Dec-10	16-Dec-10	5	77	Package Test Tramstop																																																															
Leith Sands Sub Station		14-Apr-10	29-Oct-10	139	236	29-Oct-10, Leith Sands Sub Station																																																															
36	Order REC supply from Scottish Power	14-Apr-10		0	154	Order REC supply from Scottish Power																																																															
6	Civil Engineering and Building Works	06-May-10	09-Aug-10	65	154	Civil Engineering and Building Works																																																															
A5480	Power Infeed from Public Net available inc HV cable	09-Aug-10		0	154	Power Infeed from Public Net available inc HV cable																																																															
A5483	Access for visual inspection for E&M Substation installation (01A Leith Sands)	07-Jul-10		0	316	Access for visual inspection for E&M Substation installation																																																															
A5484	Access for E&M Substation installation (01A Leith Sands)	09-Aug-10		0	154	Access for E&M Substation installation																																																															
A5490	Install LV Power Supply and LV Power Equipment	16-Aug-10	06-Sep-10	15	149	Install LV Power Supply and LV Power Equipment																																																															

Date	Revision	Checked	Approved
09-Jul-08	Contract Programme tracked to 21 June 2008	SCS	

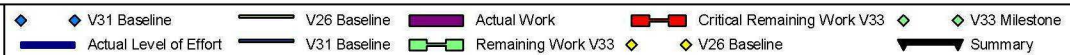
◆ V31 Baseline
 — V26 Baseline
 ■ Actual Work
 ■ Critical Remaining Work V33
 ◆ V33 Milestone
▬ Actual Level of Effort
▬ V31 Baseline
■ Remaining Work V33
◆ V26 Baseline
▬ Summary

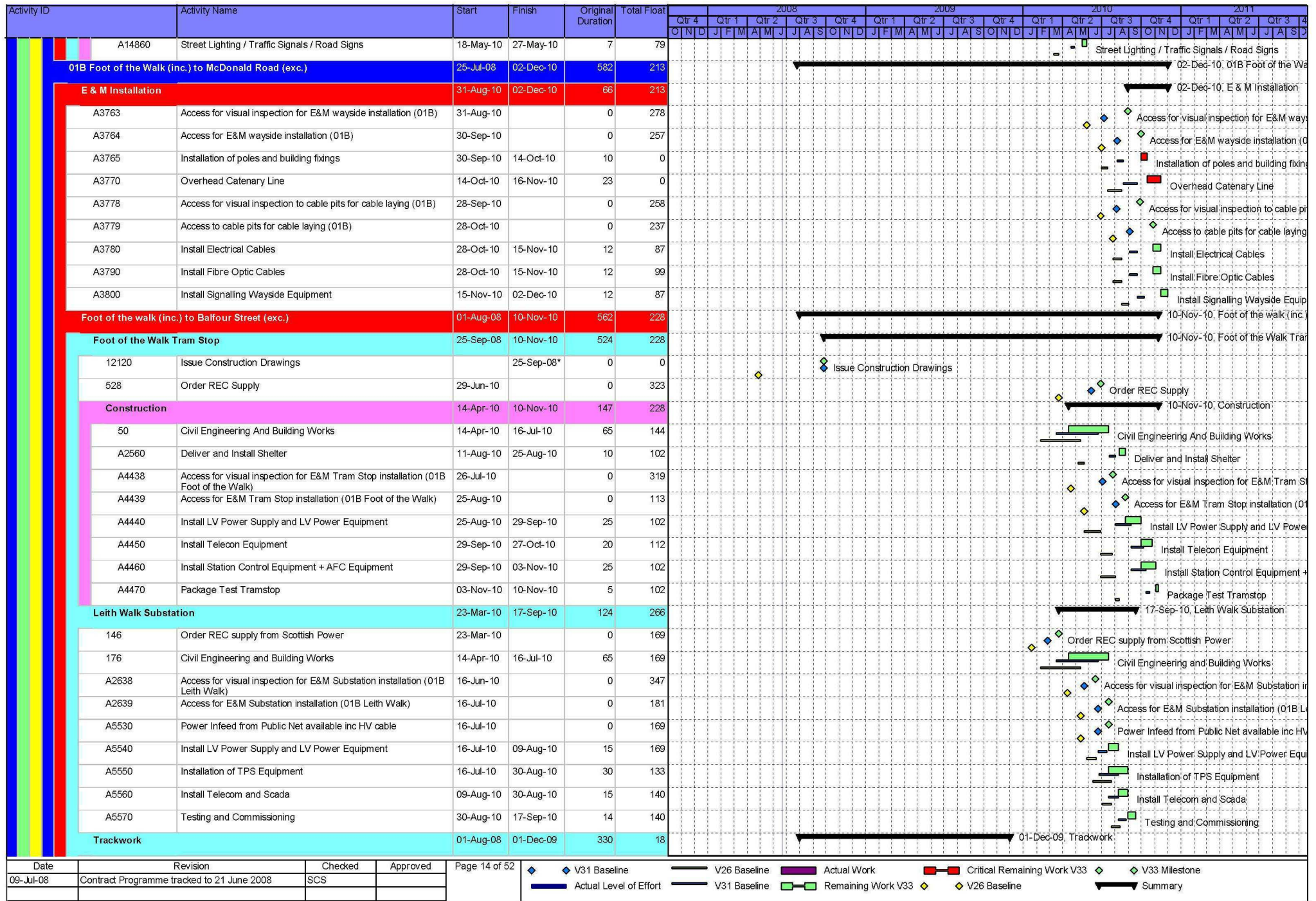


Date	Revision	Checked	Approved	Page 10 of 52	
09-Jul-08	Contract Programme tracked to 21 June 2008	SCS			

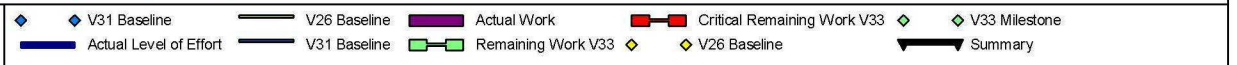


Date	Revision	Checked	Approved
09-Jul-08	Contract Programme tracked to 21 June 2008	SCS	





Date	Revision	Checked	Approved
09-Jul-08	Contract Programme tracked to 21 June 2008	SCS	



Activity ID	Activity Name	Start	Finish	Original Duration	Total Float	2008																2009																2010																2011															
						Qtr 4	Qtr 1	Qtr 2	Qtr 3	Qtr 4	Qtr 1	Qtr 2	Qtr 3	Qtr 4	Qtr 1	Qtr 2	Qtr 3	Qtr 4	Qtr 1	Qtr 2	Qtr 3	Qtr 4	Qtr 1	Qtr 2	Qtr 3	Qtr 4	Qtr 1	Qtr 2	Qtr 3	Qtr 4	Qtr 1	Qtr 2	Qtr 3	Qtr 4																																			
Leith Walk Ch 350-100		14-Oct-08	26-Nov-08	31	44	28-Nov-08, Leith Walk Ch 350-100																																																															
A11970	Establish Traffic Management & Temp. Fencing	14-Oct-08	16-Oct-08	2	44	Establish Traffic Management & Temp. Fencing																																																															
A11980	Excavate for new channel and kerb line / remove existing kerbs	16-Oct-08	30-Oct-08	10	44	Excavate for new channel and kerb line / remove existing kerbs																																																															
A11990	Construct Kerb lines	21-Oct-08	07-Nov-08	13	44	Construct Kerb lines																																																															
A12000	Reset Gullies	28-Oct-08	14-Nov-08	13	45	Reset Gullies																																																															
A12010	Surface new channel	14-Nov-08	24-Nov-08	6	45	Surface new channel																																																															
A12020	Pavement Works	07-Nov-08	25-Nov-08	12	44	Pavement Works																																																															
A12030	Street Lighting / Traffic Signals / Road Signs	07-Nov-08	18-Nov-08	7	49	Street Lighting / Traffic Signals / Road Signs																																																															
A12040	Remove fencing and Traffic Management	25-Nov-08	26-Nov-08	1	44	Remove fencing and Traffic Management																																																															
Leith Walk Ch 350-600		26-Nov-08	23-Jan-09	31	44	23-Jan-09, Leith Walk Ch 350-600																																																															
A12050	Establish Traffic Management & Temp. Fencing	26-Nov-08	28-Nov-08	2	44	Establish Traffic Management & Temp. Fencing																																																															
A12060	Excavate for new channel and kerb line / remove existing kerbs	28-Nov-08	15-Dec-08	10	44	Excavate for new channel and kerb line / remove existing kerbs																																																															
A12070	Construct Kerb lines	04-Dec-08	06-Jan-09	13	44	Construct Kerb lines																																																															
A12080	Reset Gullies	11-Dec-08	13-Jan-09	13	45	Reset Gullies																																																															
A12090	Surface new channel	13-Jan-09	21-Jan-09	6	45	Surface new channel																																																															
A12100	Pavement Works	06-Jan-09	22-Jan-09	12	44	Pavement Works																																																															
A12110	Street Lighting / Traffic Signals / Road Signs	06-Jan-09	15-Jan-09	7	49	Street Lighting / Traffic Signals / Road Signs																																																															
A12120	Remove fencing and Traffic Management	22-Jan-09	23-Jan-09	1	44	Remove fencing and Traffic Management																																																															
Balfour Street (inc.) to McDonald Road (exc.)		25-Jul-08	18-Nov-10	573	222	18-Nov-10, Balfour Street (inc.)																																																															
Trackwork		01-Aug-08	18-Nov-10	568	0	18-Nov-10, Trackwork																																																															
12150	Issue Construction Drawings		01-Aug-08*	0	0	Issue Construction Drawings																																																															
Balfour Street Ch 600-850		01-Dec-09	17-May-10	107	0	17-May-10, Balfour Street Ch 600-850																																																															
1st half		01-Dec-09	04-Feb-10	37	43	04-Feb-10, 1st half																																																															
A12850	Establish Traffic Management & Temp. Fencing	01-Dec-09	03-Dec-09	2	18	Establish Traffic Management & Temp. Fencing																																																															
A12860	Excavate box	03-Dec-09	10-Dec-09	5	18	Excavate box																																																															
A12870	Excavate, lay and concrete ducts	10-Dec-09	05-Jan-10	8	18	Excavate, lay and concrete ducts																																																															
A12880	Excavate and construct OLE bases	10-Dec-09	05-Jan-10	8	18	Excavate and construct OLE bases																																																															
A12900	Set Track (250m)	13-Jan-10	27-Jan-10	10	12	Set Track (250m)																																																															
A12910	Place upper concrete and cure	18-Jan-10	01-Feb-10	10	43	Place upper concrete and cure																																																															
A12920	Street Surface finishes	01-Feb-10	04-Feb-10	3	43	Street Surface finishes																																																															
2nd half		04-Feb-10	17-May-10	70	0	17-May-10, 2nd half																																																															
A13250	Excavate box	04-Feb-10	08-Feb-10	2	43	Excavate box																																																															
A13260	Excavate, lay and concrete ducts	08-Feb-10	18-Feb-10	8	43	Excavate, lay and concrete ducts																																																															
A13290	Set Track	21-Apr-10	06-May-10	10	0	Set Track																																																															
A13300	Place upper concrete and cure	26-Apr-10	11-May-10	10	0	Place upper concrete and cure																																																															
A13310	Street Surface finishes	11-May-10	14-May-10	3	0	Street Surface finishes																																																															

Date	Revision	Checked	Approved
09-Jul-08	Contract Programme tracked to 21 June 2008	SCS	

