

**INFORME DE AVANCE DE FABRICACIÓN
MANUFACTURING STATUS
"EDINBURGH TRAM"**

1. PLANTILLA ARMADO BASTIDOR (A-E-C) / FRAME ASSEMBLY(A-E-C):



**INFORME DE AVANCE DE FABRICACIÓN
MANUFACTURING STATUS
"EDINBURGH TRAM"**

2. PLANTILLA DE SOLDADURA DE BASTIDOR (A-E-C) / FRAME WELDING JIG (A-E-C):



**INFORME DE AVANCE DE FABRICACIÓN
MANUFACTURING STATUS
"EDINBURGH TRAM"**

3. COLOCACION DE SOPORTES / SUPPORTS' PLACING:



INFORME DE AVANCE DE FABRICACIÓN MANUFACTURING STATUS "EDINBURGH TRAM"

4. ARMADO DE CAJA/ BODYSHELL ASSEMBLY



1.- Armado de caja E-1 / E-1 Bodyshell assembly

5. ENDEREZADO DE CAJA / BODYSHELL STRAIGHTEN



2. Enderezado caja A-1 / A-1 Bodyshell straighten

INFORME DE AVANCE DE FABRICACIÓN MANUFACTURING STATUS "EDINBURGH TRAM"

6. COLOCACIÓN SOPORTERÍA / BODYSHELL SUPPORTS PLACING



3 Caja F-1 / Bodyshell F-1

7. PLANTILLA MEDICIÓN CAJA / BODYSHELL MEASUREMENT JIG



4 Cajas C-1 y D-1 en posición de medida / Bodyshells C-1 and D-1
measuring

**INFORME DE AVANCE DE FABRICACIÓN
MANUFACTURING STATUS
"EDINBURGH TRAM"**

8.- MONTAJE TABLEROS DE PISO/ FLOOR PANEL ASSEMBLY

9.- PROCESO DE PINTURA / BODY SHELL PAINTING PROCESS (PRIMER)



INFORME DE AVANCE DE FABRICACIÓN
MANUFACTURING STATUS
"EDINBURGH TRAM"

Coche / Car	Posición / Status
A-1	Enderezando / Straightening
B-1	Pintura / Painting
C-1	Medido / Measured
F-1	Enderezado. Colocación soportes/ Straighthen.Supports pending
G-1	Armando / Assembling
D-1	Medido /Measured
E-1	Armado de caja / Bodysshell assembly

Fdo. / *Signed*: Idoia Garmendia
Resp. G. Calidad CAF / CAF Q.A.

10.5 RFI Register

Process Register

Company Bilfinger Berger Civil
Channel etn



Status	System Ref	WorkPackage Ref	Publishing Company	Title	Content	Publishing User	Issued Date
Open	RFI-00048	1111-1	Graham Construction	RFI 048 - LOD AT ROSEBURN GARAGES- MURRAYFIELD SECTION 5A	LOD AT ROSEBURN GARAGES - MURRAYFIELD SECTION 5A Issued 13.06.08	Des Millar	23/07/2008
Open	RFI-00059	BSC-58	Siemens Transportation Systems	RFI 059 - ELECTRICITY SUPPLIES	Response Received 03.07.08 - TRN- ELECTRICITY SUPPLIES Issued 25.06.08	Nigel Baskerville	24/07/2008
Open	RFI-00060	BSC-59	PB	RFI 060 - RETAINING WALLS	response Received 03.07.08 - TRN-01512 RETAINING WALLS Issued 27.06.08	Alan Dolan	24/07/2008
Open	RFI-00065	BSC-64	Siemens Transportation Systems	RFI 065 - ELECTRICITY AND METER SUPPLIER	Response Received 16.07.08 - TRN-01584 ELECTRICITY AND METER SUPPLIER Issued 03.07.08	Roland Brueckmann	24/07/2008
Open	RFI-00073	BSC-72	Siemens Transportation Systems	RFI 073 - DEPOT TRANSFORMER	Response Received 10.07.08 - TRN-1544 DEPOT TRANSFORMER Issued 11.07.08	Robert Kraemer	24/07/2008
Open	RFI-00074	BSC-73	Siemens Transportation Systems	RFI 074 - WASHING PLANT DESIGN	Response Received 16.07.08 - TRN-01584 WASHING PLANT DESIGN Issued 11.07.08	Norbert Wunder	24/07/2008
Open	RFI-00075	BSC-74	Siemens Transportation Systems	RFI 075 - REQUIREMENTS FPR FLOATING SLAB	Response Received 16.07.08 - TRN-01584 REQUIREMENTS FPR FLOATING SLAB Issued 11.07.08	Robert Kraemer	24/07/2008
Open	RFI-00076	BSC-75	Siemens Transportation Systems	RFI 076 - DATA REQUIRED FOR NEW ELECTRICITY APPLICATIONS	Response Received 21.07.08 - TRN-01600 DATA REQUIRED FOR NEW ELECTRICITY APPLICATIONS Issued 11.07.08	Nigel Baskerville	24/07/2008
Open	RFI-00077	BSC-76	Siemens Transportation Systems	RFI 077 - RE-ISSUE OF RFI 067	Response Received 18.07.08 RE-ISSUE OF RFI 067 Issued 14.07.08	Robert Kraemer	24/07/2008
Open	RFI-00079	BSC-78	PB	RFI 079 - LAND	Response Received 18.07.08 - TRN-01596 LAND Issued 18.07.08	Alan Dolan	24/07/2008
Open	RFI-00082	BSC-81	Siemens Transportation Systems	RFI 082 - TRAMSOP LIGHTING	Response Received 21.07.08 TRAMSOP LIGHTING Issued 31.07.08	Roland Brueckmann	31/07/2008
Open	RFI-00098	BSC-97	Siemens Transportation Systems	RFI 00098- ETN(TRW)TIE&ABC#050013; Additional Turnouts	Drawing No. ULE90130-01-TAL-00004 Rev. 4 (see attachment) illustrates a scissor crossover as provisi	Robert Kraemer	15/08/2008

Process Register

Company Bilfinger Berger Civil
Channel etn



Open	RFI-00099	BSC-98	Siemens Transportation Systems	RFI 00099-ETN(DWE)TIE&ABC050014_Compresed Air	Following previous versions of the ER the technical proposal for the DWE considers a Compressed Air	Robert Kraemer	15/08/2008
Open	RFI-00100	BSC-99	Siemens Transportation Systems	RFI 00100- ETN(TRW)TIE&ABC#050020 - Value Engineering TRW	Value Engineering Opportunity – Change from Embedded track to ballasted track; Tie reference: INF_CO	Klaus Dieler	20/08/2008
Open	RFI-00103	BSC-102	Siemens Transportation Systems	RFI 00103- ETN(SIG)TIE&ABC#050027 Timetable System	Please provide details of the tram timetable system proposed for the Edinburgh Tram project and in p	Robert Kraemer	25/08/2008
Open	RFI-00110		Siemens Transportation Systems	SERVICE VEHICLE PAYLOAD (ETN(DWE)TIE&ABC#050059)	In the Employer's Requirements, Section 29.14-Depot, Provisional Schedule of the Plant and Equipment	Frank Wenzel	23/09/2008
Open	RFI-00111		Siemens Transportation Systems	Track Support Stiffness (Please see also attached PDF-File!)	See attached RFI form and the attached PDF: ETN(TRW)TIE=T&ABC_055661 Track Support Stiffness_iss2_re	Klaus Dieler	26/09/2008
Open	RFI-00114		Siemens Transportation Systems	Ducts	ER Chap 18.2 is demanding 20% spare duct capacity of the maximum sized duct. Considering the heat	Robert Kraemer	02/10/2008
Open	RFI-00116		Siemens Transportation Systems	Noise & Vibration Protecting Measures	During a meeting on the requirements for noise & vibration we have been informed by Tie, that co	Robert Kraemer	07/10/2008
Open	RFI-00117		Siemens Transportation Systems	Gogar Depot OLE Sectioning	The designed sectioning is flexible but complex, there is an opportunity to simplify, reduced ca	Robert Kraemer	07/10/2008
Open	RFI-00124		Siemens Transportation Systems	Emergency Telephone Lines	In order to progress the Emergency Line requirements listed in the Employee Requirements can Tie pl	Robert Kraemer	13/10/2008
Open	RFI-00125		Siemens Transportation Systems	Depot PABX requirements	In order to progress the PABX design can Tie / Transdev, please specify the number of PABX exten	Robert Kraemer	20/10/2008
Open	RFI-00156		Bilfinger Berger Civil	Section 1B	Thus ducts from chamber at approx ch 210 running to and through Jane St have not been lowered an	Frank Young	20/11/2008
Open	RFI-00162		Bilfinger Berger Civil	Section 1B Roadworks	New kerb alignment approx ch 510 - 530 runs through new BT and C&W chambers. Please advise (see	Frank Young	15/12/2008
Open	RFI-00164		Siemens Transportation Systems	Depot PABX Emergency Lines	Further to the meeting held with members of Transdev (Keating / Parkes), Siemens (Smith) and the	Michael Wilken	17/12/2008
Open	RFI-00165		Bilfinger Berger Civil	Section 1B Roadworks - high water valve	At approx ch550 RHS a water valve (currently in footpath) which is in the new road construction wi	Frank Young	06/01/2009
Open	RFI-00166		Bilfinger Berger Civil	Section 1B Roadworks - Drawpit ch474	A new electricity drawpit at approx ch 474 RHS currently on the footway but to be within carriag	Frank Young	06/01/2009
Open	RFI-00167		Bilfinger Berger Civil	Section 1B Roadworks - BT chamber ch 490	Edge of BT chamber cover at approx ch 490 LHS lies on line of new kerb. (See attached photo). Plea	Frank Young	06/01/2009

Process Register

Company Bilfinger Berger Civil
Channel etn



Open	RFI-00168	Bilfinger Berger Civil	Section 1B Roadworks - ch 495 gas valve	A gas valve at approx ch 495 RHS will foul the new kerb line (see attached photo). Please advise	Frank Young	06/01/2009
Open	RFI-00169	Bilfinger Berger Civil	Section 1B Roadworks - C&W chamber north radius Crown Place	A new chamber for C&W on the north radius of Crown Place, approx ch110, is fouling the new kerblin	Frank Young	06/01/2009
Open	RFI-00170	Bilfinger Berger Civil	FW:Section 1B Roadworks - ch399 jointing chamber	raised by Young, Frank of Bilfinger Berger Civil on 07/01/2009----- New chambe	Frank Young	07/01/2009
Open	RFI-00171	Bilfinger Berger Civil	Section 1B Roadworks - FH ch405 RHS	New fire hydrant at ch 405 RHS currently in footway has only 120mm cover to spindle but will be in	Frank Young	08/01/2009
Open	RFI-00172	Bilfinger Berger Civil	Section 1B Roadworks - FHs ch446	2 No fire hydrants (1 old, 1 new ?) currently on footway but to be in new carriageway only have 85	Frank Young	09/01/2009
Open	RFI-00173	Bilfinger Berger Civil	Section 1B Roadworks - ch506 FH	Fire hydrant currently in footway but to be in new carriageway only has 80mm cover from current po	Frank Young	09/01/2009
Open	RFI-00174	Bilfinger Berger Civil	Section 1B Roadworks ch 592 drawpit	Drawpit fouling new kerb line at ch592 LHS (see attached photo). Please advise	Frank Young	09/01/2009
Open	RFI-00180	Bilfinger Berger Civil	Section 1B Roadworks - ch 625 RHS BT chamber	The new BT chamber built at ch625 RHS fouls the new kerbline and ducts exiting to the road will ha	Frank Young	14/01/2009
Open	RFI-00181	Bilfinger Berger Civil	Section 1B Roadworks - ch 882 BT chamber	BT chamber at ch 882 RHS clashes with new kerbline and ducts exiting across carriageway will only	Frank Young	14/01/2009
Open	RFI-00182	Bilfinger Berger Civil	Section 1B Roadworks - ch710RHS water valve	Valve on new water main at ch 710 RHS lies on new kerbline (see attached photo). Please advise	Frank Young	14/01/2009
Open	RFI-00183	Bilfinger Berger Civil	Section 1B Roadworks - ch900 LHS valve	New valve on water main approx ch 900 LHS clashes with new kerbline (see attached photo). Please a	Frank Young	14/01/2009
Open	RFI-00184	Bilfinger Berger Civil	Section 1B Roadworks - ch 890 valve	New valve on water main approx ch 890 LHS clashes with new kerbline (see attached photo). Please a	Frank Young	14/01/2009
Open	RFI-00185	Bilfinger Berger Civil	Section 1B Roadworks - ch 210 LHS valve	Water valve at ch 210 LHS currently in footway but will be in new carriageway has only approx 120m	Frank Young	14/01/2009
Open	RFI-00186	Bilfinger Berger Civil	Section 1B Roadworks - ch 530 RHS drawpit	Existing chamber at approx ch 530 RHS clashes with new kerbline (see attached photos). Please advi	Frank Young	14/01/2009
Open	RFI-00188	Bilfinger Berger Civil	Section 1B Roadworks ch110602	Water valve/toby clashes with new kerbline at ch 110602 LHS (see attached photo). Please advise	Frank Young	20/01/2009
Open	RFI-00189	Bilfinger Berger Civil	Section 1B Roadworks ch110100	Water valve/toby clashes with new kerbline at ch 110100 (see attached photo). Please advise	Frank Young	20/01/2009
Open	RFI-00190	Bilfinger Berger Civil	Section 1B Roadworks	Water valve/toby at ch11106 LHS clashes with new kerbline (see attached photo). Please advise	Frank Young	20/01/2009

Process Register

Company Bilfinger Berger Civil
Channel etn



Open	RFI-00191	Bilfinger Berger Civil	Section 1B Roadworks ch1111151	BT chamber at ch1111151 LHS clashes with new kerbline (see attached photo). Please advise	Frank Young	20/01/2009
Open	RFI-00192	Bilfinger Berger Civil	Section 1B Roadworks ch1111095	New fire hydrant and 2 valves clash with new kerbline at approx ch 111095 RHS (see attached photo)	Frank Young	20/01/2009
Open	RFI-00197	Bilfinger Berger Civil	Section 1B Roadworks ch 111150	New water mains at Leith Walk Railway Bridge are completely within pavement make up. Please advise	Frank Young	20/01/2009
Open	RFI-00203	Bilfinger Berger Civil	Section 1C - Princes Street -A removable Tram stop?	There is no stated requirement within "Schedule Part 2" the "Employers Requirements" for the Princes	Clifford Styles	05/02/2009
Open	RFI-00207	Bilfinger Berger Civil	SECTION 5A - HAYMARKET DEPOT	Further to RFI 176 – Haymarket Depot entrance existing utilities	Holger Plate	03/03/2009
Open	RFI-00208	Bilfinger Berger Civil	SECTION 1B - SITE CLEARANCE	The answer to the above RFI is u Further to RFI 177 – Section 1b Site Clearance	Holger Plate	03/03/2009
Open	RFI-00209	Bilfinger Berger Civil	SECTION 1B - SITE CLEARANCE	The answer to the above RFI is unsatisfactory and Further to RFI 178 – Section 1b Site Clearance	Holger Plate	03/03/2009
Open	RFI-00210	Bilfinger Berger Civil	SECTION 1B - SITE CLEARANCE	The answer to the above RFI is unsatisfactory and Further to RFI 179 – Section 1b Site Clearance	Holger Plate	03/03/2009
Open	RFI-00211	Bilfinger Berger Civil	Section 1B Roadworks	The answer to the above RFI is unsatisfactory and At approx ch 125 RHS - Casselbank St an old steel pipe has been connected to new BT ducting immedi	Frank Young	03/03/2009

10.6 Civil Works Procurement Schedule

10.7 Change Register

Notations/Supplements:
Approved Work Order linked

Ref	Ref. No.	Iss Change Order / TCO	Description	Date Notified	Date of Issue	Letter Ref	Approved / Approved	Compendium Event	Type	Change Type	Picking Method	Priority	SEIS	Bilfinger	Sera Notes	Value Estimate (€)			Allocation of Cost	Section	Risk Agreed Value
																Estimate	Est. Statement (€)	Est. Agreed			
10			The 01/42001 work order is currently ongoing in the area of access and establishments of the site offices for Section 5C. Original Transmission is being and disrupting the release in the area of access and establishments of the site offices for Section 5C.	20/06/2008	02/06/08 04/06/08 11/06/08 13/06/08 27/06/08	25.1.2017/M/43 In-PRO-CORR-40 25.1.2017/M/83 In-PRO-CORR-72 25.1.2017/M/83 In-PRO-CORR-72 25.1.2017/M/83 In-PRO-CORR-72	N/A		D		4					0	0	0	N/A	5C	0
11			The 01/42001 work order is currently ongoing in the area of access and establishments of the site offices for Section 5C. Original Transmission is being and disrupting the release in the area of access and establishments of the site offices for Section 5C.	20/06/2008	11/06/08 27/06/08 29/06/08	25.1.2017/M/83 In-PRO-CORR-40 25.1.2017/M/83 In-PRO-CORR-72 25.1.2017/M/83 In-PRO-CORR-72	N/A		D		4					0	0	0	N/A	5C	0
12			The 01/42001 work order is currently ongoing in the area of access and establishments of the site offices for Section 5C. Original Transmission is being and disrupting the release in the area of access and establishments of the site offices for Section 5C.	20/06/2008	02/06/08 11/06/08 13/06/08 27/06/08 29/06/08 30/06/08 26/06/08	25.1.2017/M/43 In-PRO-CORR-40 25.1.2017/M/83 In-PRO-CORR-72 25.1.2017/M/83 In-PRO-CORR-72 25.1.2017/M/83 In-PRO-CORR-72 25.1.2017/M/83 In-PRO-CORR-72 25.1.2017/M/83 In-PRO-CORR-72	N/A		D		4					0	0	0	N/A	7	0
13			Notified Deposition in accordance with paragraph 3.4.5.1 and 3.5. Schedule Part 4 due to CEC Planning, with delay as a result of the 250kV line work. The 250kV line work is currently ongoing in the area of access and establishments of the site offices for Section 5C. Original Transmission is being and disrupting the release in the area of access and establishments of the site offices for Section 5C.	20/06/2008	11/06/08	25.1.2017/M/43 In-PRO-CORR-40 25.1.2017/M/83 In-PRO-CORR-72	N/A		D		4					0	0	0	N/A	ALL	0
14			Notified Deposition in accordance with paragraph 3.4.5.1 and 3.5. Schedule Part 4 due to CEC Planning, with delay as a result of the 250kV line work. The 250kV line work is currently ongoing in the area of access and establishments of the site offices for Section 5C. Original Transmission is being and disrupting the release in the area of access and establishments of the site offices for Section 5C.	20/06/2008	02/06/08 11/06/08 13/06/08 27/06/08 29/06/08 30/06/08	25.1.2017/M/43 In-PRO-CORR-40 25.1.2017/M/83 In-PRO-CORR-72 25.1.2017/M/83 In-PRO-CORR-72 25.1.2017/M/83 In-PRO-CORR-72	N/A		D		4					0	0	0	N/A	8	0
15			Notified Deposition in accordance with paragraph 3.4.5.1 and 3.5. Schedule Part 4 due to CEC Planning, with delay as a result of the 250kV line work. The 250kV line work is currently ongoing in the area of access and establishments of the site offices for Section 5C. Original Transmission is being and disrupting the release in the area of access and establishments of the site offices for Section 5C.	20/06/2008	02/06/08 11/06/08 13/06/08 27/06/08 29/06/08 30/06/08	25.1.2017/M/43 In-PRO-CORR-40 25.1.2017/M/83 In-PRO-CORR-72 25.1.2017/M/83 In-PRO-CORR-72 25.1.2017/M/83 In-PRO-CORR-72	N/A		D		4					0	0	0	N/A	8	0
16			Notified Deposition in accordance with paragraph 3.4.5.1 and 3.5. Schedule Part 4 due to CEC Planning, with delay as a result of the 250kV line work. The 250kV line work is currently ongoing in the area of access and establishments of the site offices for Section 5C. Original Transmission is being and disrupting the release in the area of access and establishments of the site offices for Section 5C.	20/06/2008	02/06/08 11/06/08 13/06/08 27/06/08 29/06/08 30/06/08	25.1.2017/M/43 In-PRO-CORR-40 25.1.2017/M/83 In-PRO-CORR-72 25.1.2017/M/83 In-PRO-CORR-72 25.1.2017/M/83 In-PRO-CORR-72	N/A		D		4					0	0	0	N/A	8	0
17			Notified Deposition in accordance with paragraph 3.4.5.1 and 3.5. Schedule Part 4 due to CEC Planning, with delay as a result of the 250kV line work. The 250kV line work is currently ongoing in the area of access and establishments of the site offices for Section 5C. Original Transmission is being and disrupting the release in the area of access and establishments of the site offices for Section 5C.	20/06/2008	02/06/08 11/06/08 13/06/08 27/06/08 29/06/08 30/06/08	25.1.2017/M/43 In-PRO-CORR-40 25.1.2017/M/83 In-PRO-CORR-72 25.1.2017/M/83 In-PRO-CORR-72 25.1.2017/M/83 In-PRO-CORR-72	Y		D		4	3				0	0	0	N/A	5C	0

ITEM INFRACO NOTIFICATION OF THE CHANGE (INTC)



Notations/Supplements:
Approved NCC Order Sheet

Item Ref	Infraco Order ID	Date Refiled	Description	Date of Infraco	Letter Ref	Approved/Amended	Compendium Event	Type	Change Type	Priority	SEIS	Budget	Schemes	Value Estimate (Gross £'000)			Allocation of Cost	Section	Risk Appraised Value			
														CFP	Sub-CP	OT & P				Programs	Other	Approved
39		17/06/2008	Order to Strengthen Run-in Area Stone Base (110) Values in SS2 L&R 0046 in accordance with Schedule Part 4, paragraph 3.4.5.1	28/02/08 27/02/08 20/02/08 30/07/08 18/06/08 02/10/08	SS2-LE0103-SM-LET-0130 SS-PP CORR 10A SS-LE0103-SM-LET-0130 SS-LE0103-SM-LET-0130 SS-LE0103-SM-LET-0130 SS-LE0103-SM-LET-0130	N/A		M											1	0		
40		17/06/2008	Order and Disruption to Ground Line Signs at SS2 L&R 0047 in accordance with Clause 18 and Clause 65	27/06/08 01/07/08 30/07/08 19/06/08	SS-PP CORR 10A SS-LE0103-SM-LET-0130 SS-LE0103-SM-LET-0130 SS-LE0103-SM-LET-0130	N/A		M												1	0	
41		17/06/2008	Order and Disruption to Brackets, Turnstiles, Roverskin Drive Bicycles, Roverskin Bicycles and SS2 L&R 0048 in accordance with Schedule Part 4 paragraph 3.4.1.3	20/07/08 3/07/08 19/06/08 02/10/08	SS2-LE0103-SM-LET-0130 SS-PP CORR 10A SS-LE0103-SM-LET-0130 SS-LE0103-SM-LET-0130	N/A		M												3	0	
42		17/06/2008	Order and Disruption to Brackets, Turnstiles, Landscaping in accordance with Schedule Part 4 paragraph 3.4.1.3	06/12/08 27/06/08 01/07/08 30/07/08 19/06/08 02/10/08 21/10/08 19/11/08 21/11/08 17/12/08	SS-PP CORR 10A SS-LE0103-SM-LET-0130 SS-LE0103-SM-LET-0130 SS-LE0103-SM-LET-0130 SS-LE0103-SM-LET-0130 SS-LE0103-SM-LET-0130 SS-LE0103-SM-LET-0130 SS-LE0103-SM-LET-0130 SS-LE0103-SM-LET-0130 SS-LE0103-SM-LET-0130	Y	M	1	4	2432	0	0	0	2432	243	2096	0	2096	N/A	3	0	
43		17/06/2008	Order and Disruption to Brackets, Turnstiles, Landscaping in accordance with Schedule Part 4 paragraph 3.4.1.3	07/07/08 01/07/08 14/07/08 24/07/08 20/07/08 08/06/08 19/06/08 02/10/08 16/12/08 17/12/08 10/02/08	SS-PP CORR 10A SS-LE0103-SM-LET-0130 SS-LE0103-SM-LET-0130 SS-LE0103-SM-LET-0130 SS-LE0103-SM-LET-0130 SS-LE0103-SM-LET-0130 SS-LE0103-SM-LET-0130 SS-LE0103-SM-LET-0130 SS-LE0103-SM-LET-0130 SS-LE0103-SM-LET-0130	N	M	1	1,2,3,4	4	0	0	0	0	0	0	0	0	N/A	10	0	
44	1	20/06/2008	INTC001 - Amendments to Ocean Terminal Layout	11/06/08 19/06/08 20/06/08 01/06/08 01/06/08 19/06/08 23/06/08 20/06/08 17/11/08 20/11/08 12/12/08 19/12/08 05/01/08 07/01/08	SS-LE0103-SM-LET-0130 SS-PP CORR 10A SS-LE0103-SM-LET-0130 SS-LE0103-SM-LET-0130 SS-LE0103-SM-LET-0130 SS-LE0103-SM-LET-0130 SS-LE0103-SM-LET-0130 SS-LE0103-SM-LET-0130 SS-LE0103-SM-LET-0130 SS-LE0103-SM-LET-0130 SS-LE0103-SM-LET-0130 SS-LE0103-SM-LET-0130 SS-LE0103-SM-LET-0130	Y	I	1	4	117,265	0	117,265	0	117,265	6,977	125,932	151,133	0	0	13	1A	0
45		14/07/2008	Order and Disruption due to amended design for A2050000 in accordance with Schedule Part 4 paragraph 3.4.1.3	30/06/08 23/07/08 14/07/08	SS-LE0103-SM-LET-0070 SS-LE0103-SM-LET-0070 SS-LE0103-SM-LET-0070	N/A	M													1B	0	
46		14/07/2008	Order and Disruption due to amended design for SS20500000 in accordance with Schedule Part 4 paragraph 3.4.1.3	04/06/08 01/06/08 11/06/08 23/07/08 15/07/08 15/07/08	SS-LE0103-SM-LET-0070 SS-LE0103-SM-LET-0070 SS-LE0103-SM-LET-0070 SS-LE0103-SM-LET-0070 SS-LE0103-SM-LET-0070 SS-LE0103-SM-LET-0070	N/A	M														1E	0
47		14/07/2008	Order and Disruption due to amended design for SS20200000 in accordance with Schedule Part 4 paragraph 3.4.1.3	04/06/08 01/06/08 11/06/08 23/07/08 15/07/08 15/07/08	SS-LE0103-SM-LET-0070 SS-LE0103-SM-LET-0070 SS-LE0103-SM-LET-0070 SS-LE0103-SM-LET-0070 SS-LE0103-SM-LET-0070 SS-LE0103-SM-LET-0070	N/A	M														1A	0
48	15	16/07/2008	Additional TEC Drawings to SS2 L&R ref LLE0103-SM-LET-0100 dated 06 July in accordance with SS2 Agreement Schedule Clause 15, and Schedule 4 Clause 3.5.6.4	04/07/08 19/11/08 07/01/08 02/01/08 06/02/08 09/02/08	SS-LE0103-SM-LET-0110 SS-LE0103-SM-LET-0110 SS-LE0103-SM-LET-0110 SS-LE0103-SM-LET-0110 SS-LE0103-SM-LET-0110 SS-LE0103-SM-LET-0110	Y	D	1	3	3,404	0	0	0	3,404	340	3,064	446	3,550	N/A	A4	3,550	

ETN INFRACO NOTIFICATION OF THE CHANGE (INFC)



Notations/Supplements:
 Accepted Work Order linked

Ref ID	Ref. No.	Iss Change Order / I.C.O.	Description	Date Notified	Date of Issue	Letter Ref	Approved / Approved?	Compendium Event	Type	Change Type	Picking Method	Priority	SECS	Budget	Schemes	Value Estimate (GBP)			Allocation of Cost	Section	Risk Agreed Value									
																Est. Statement (E-est. T. & P.)	Est. Statement (E-est. T. & P.)	Est. Statement (E-est. T. & P.)												
49	6		TNC 4: Bannock Street Public Realm Works	24/06/2008	18/07/08	BB94-Email-Transmit 31 Layout																								
					27/07/08	SS5-LE00130-D1-LET (08045)																								
					28/07/08	SS5-LE00130-D1-LET (08045)																								
					12/08/08	SS5-LE00130-D1-LET (08065)																								
					12/08/08	BB94-Email-Transmit 31 Layout																								
					30/07/08	SS5-LE00130-D1-LET (08045)																								
					28/07/08	SS5-LE00130-D1-LET (08045)																								
					27/07/08	SS5-LE00130-D1-LET (08045)																								
					27/07/08	SS5-LE00130-D1-LET (08045)																								
					30/08/08	SS5-LE00130-D1-LET (08013)																								
					21/10/08	SS5-LE00130-D1-LET (08013)																								
					28/10/08	SS5-LE00130-D1-LET (08013)																								
					28/11/08	SS5-LE00130-D1-LET (08013)																								
					30/12/08	SS5-LE00130-D1-LET (08013)																								
					18/12/08	SS5-LE00130-D1-LET (08013)																								
					07/01/09	SS5-LE00130-D1-LET (08013)																								
					50			Newcastle TNC Signal Requirements via letter INF_CORR 035 10/06/08	18/07/2008	07/02/08	SS5-LE00130-D1-LET (08045)																			
										18/07/08	ETN/SCOTIE & ABC																			
										09/08/08	INF CORR 183																			
										24/09/08	INF CORR 183																			
18/12/08	INF CORR 183																													
07/02/08	INF CORR 183																													
27/08/08	INF CORR 183																													
28/07/08	INF CORR 183																													
07/02/08	INF CORR 183																													
20/08/08	INF CORR 183																													
17/08/08	INF CORR 183																													
51	7	6	TNC 4: Bannock Street Public Realm Works	24/06/2008						08/10/08	SS5-LE00130-D1-LET (08045)																			
					09/10/08	SS5-LE00130-D1-LET (08045)																								
					09/10/08	SS5-LE00130-D1-LET (08045)																								
					27/10/08	SS5-LE00130-D1-LET (08045)																								
					29/10/08	SS5-LE00130-D1-LET (08045)																								
					20/11/08	SS5-LE00130-D1-LET (08045)																								
					20/11/08	SS5-LE00130-D1-LET (08045)																								
					20/11/08	SS5-LE00130-D1-LET (08045)																								
					20/11/08	SS5-LE00130-D1-LET (08045)																								
					12/12/08	SS5-LE00130-D1-LET (08045)																								
					06/01/09	SS5-LE00130-D1-LET (08045)																								
					26/01/09	SS5-LE00130-D1-LET (08045)																								
52	3	7	TNC 4: Bannock Street Public Realm Works	24/06/2008	11/07/08	SS5-LE00130-D1-LET (08045)																								
					25/07/08	SS5-LE00130-D1-LET (08045)																								
					28/07/08	SS5-LE00130-D1-LET (08045)																								
					21/08/08	SS5-LE00130-D1-LET (08045)																								
					09/09/08	SS5-LE00130-D1-LET (08045)																								
					09/09/08	SS5-LE00130-D1-LET (08045)																								
					09/09/08	SS5-LE00130-D1-LET (08045)																								
					20/10/08	SS5-LE00130-D1-LET (08045)																								
					20/10/08	SS5-LE00130-D1-LET (08045)																								
					20/10/08	SS5-LE00130-D1-LET (08045)																								
					20/10/08	SS5-LE00130-D1-LET (08045)																								
					20/10/08	SS5-LE00130-D1-LET (08045)																								
53	3	7	TNC 4: Bannock Street Public Realm Works	24/06/2008	17/11/08	SS5-LE00130-D1-LET (08045)																								
					20/11/08	SS5-LE00130-D1-LET (08045)																								
					20/11/08	SS5-LE00130-D1-LET (08045)																								
					10/12/08	SS5-LE00130-D1-LET (08045)																								
					12/12/08	SS5-LE00130-D1-LET (08045)																								
					06/01/09	SS5-LE00130-D1-LET (08045)																								
					06/01/09	SS5-LE00130-D1-LET (08045)																								
					06/01/09	SS5-LE00130-D1-LET (08045)																								
					06/01/09	SS5-LE00130-D1-LET (08045)																								
					06/01/09	SS5-LE00130-D1-LET (08045)																								
					06/01/09	SS5-LE00130-D1-LET (08045)																								
					06/01/09	SS5-LE00130-D1-LET (08045)																								
54	3	7	TNC 4: Bannock Street Public Realm Works	24/06/2008	11/07/08	SS5-LE00130-D1-LET (08045)																								
					25/07/08	SS5-LE00130-D1-LET (08045)																								
					28/07/08	SS5-LE00130-D1-LET (08045)																								
					21/08/08	SS5-LE00130-D1-LET (08045)																								
					09/09/08	SS5-LE00130-D1-LET (08045)																								
					09/09/08	SS5-LE00130-D1-LET (08045)																								
					09/09/08	SS5-LE00130-D1-LET (08045)																								
					20/10/08	SS5-LE00130-D1-LET (08045)																								
					20/10/08	SS5-LE00130-D1-LET (08045)																								
					20/10/08	SS5-LE00130-D1-LET (08045)																								
					20/10/08	SS5-LE00130-D1-LET (08045)																								
					20/10/08	SS5-LE00130-D1-LET (08045)																								

ETN INFRACO NOTIFICATION of the CHANGE (MTC)



Notations/Supplements:
 Approved Work Order linked

Ref ID	MTC Change Order ID	Description	Date Notified	Date of Issue	Letter Ref	Approved/Proposed?	Compensation Event	Type	Change Type	Picking Method	Priority	SECS	Bilfinger	Services	Programs	MTC #1	Values Estimate (GBP)			Allocation of Cost	Section	Risk			
																	E. Statement (Euros T.2.2)	SPS Total	OT & TP				E. Agreed	E. Not Agreed	Point to E
86	10	M&E/A TO THE B&CO Boundary of Station Conversion Section HA,1B,1C and 1D	05/06/2008	20/06/08 20/06/08 17/06/08 14/06/08 23/06/08 27/06/08 17/11/08 20/11/08 24/11/08 20/11/08 27/11/08 12/12/08 12/12/08 19/12/08 19/12/08 05/01/09 07/01/09 20/01/09 20/01/09 26/01/09	HAINE CORR 181 25.1.201/HA180 HAINE CORR 157 25.1.201/HA174 HAINE CORR 272 25.1.201/HA174 HAINE CORR 387 25.1.201/HA169/173 HAINE CORR 458 25.1.201/HA102/103 HAINE CORR 523 HAINE CORR 508 HAINE CORR 503 HAINE CORR 537 25.1.201/HA102/109 25.1.201/HA107/128 25.1.201/HA107/147 HAINE CORR 617 25.1.201/HA107/139	Y	Y	M	1	1,2,3	3	0	0	0	0	0	0	0	0	N/A	1	0			
87	11 13	Duct Installation at Leith Walk	11/07/2008	14/07/08 17/07/08 10/06/08 17/06/08 22/06/08 22/06/08 08/10/08 16/10/08 13/11/08 08/11/08 05/01/09 22/01/09	email:BB888 & HAINE CORR 100 25.1.201/HA128 25.1.201/HA175 HAINE CORR 158 25.1.201/HA175 25.1.201/HA175 HAINE CORR 175 HAINE CORR 175 email:InfraCO-SOS MRMH HAINE CORR 240 HAINE CORR 383 HAINE CORR 395 25.1.201/HA106/104 25.1.201/HA173/177 HAINE CORR 830	Y		I	1	4	4	0	255	0	0	26	299	300	0	N/A	18	300			
88	14	Power Connection Phase 14	05/06/2008	26/06/08 16/10/08 08/10/08 07/01/09 20/01/09 07/06/08 20/06/08 20/06/08 24/11/08 12/12/08 20/07/08 20/07/08	HAINE CORR 244 HAINE CORR 559 25.1.201/HA174/177 HAINE CORR 544 SOS-LEEDS/100-101-LET-000/48 25.1.201/HA104 HAINE CORR 412 HAINE CORR 412 25.1.201/HA119 SOS-LEEDS/100-101-LET-000/52 LEEDS/100-101-LET-000/65 25.1.201/HA141 25.1.201/HA181 25.1.201/HA174/177 SOS-LEEDS/100-101-LET-000/4 25.1.201/HA179 25.1.201/HA180 25.1.201/HA196 HAINE CORR 336 25.1.201/HA1272 HAINE CORR 189	Y		M	1	4	4	0	0	0	0	0	0	0	0	0	0	0	11	AM	0
89		Skidway Sheet Cracking	30/10/08	20/06/08 20/06/08 24/11/08 12/12/08 20/07/08	SOS-LEEDS/100-101-LET-000/48 25.1.201/HA104 HAINE CORR 412 25.1.201/HA119	Y		M	1	1,2,3	4	0	0	0	0	0	0	0	0	0	N/A	18	0		
90		Worked under contract - SOS Development Workshop Agreement	31/07/2008	23/07/08 21/06/08 16/12/08 07/01/09 20/07/08	LEEDS/100-101-LET-000/65 25.1.201/HA141 25.1.201/HA181 25.1.201/HA174/177 SOS-LEEDS/100-101-LET-000/4	N/A	N/A	I	1		3	0	0	0	0	0	0	0	0	N/A	NA	0			
91		Confirmation of Work Instruction Reference ET14002- Compression Event Mitigation (MTC) - Edinburgh Foundations	10/06/2008	02/07/08 27/06/08 30/06/08 12/01/09 05/07/09	25.1.201/HA180 25.1.201/HA196 HAINE CORR 336 25.1.201/HA1272 HAINE CORR 189	Y		I	1	1,2,3	1	0	282,276	0	133,265	NA	468,531	0	0	0	465,031	N/A	5	0	
92		Worked under contract - SOS Development Workshop Agreement	11/06/2008	20/06/08 20/06/08 20/07/08 15/10/08 27/06/08 06/11/08 13/11/08 20/11/08 12/12/08 12/12/08	SOS-LEEDS/100-101-LET-000/4 SOS-LEEDS/100-101-LET-000/7 HAINE CORR 235 25.1.201/HA1272 25.1.201/HA140 HAINE CORR 395 HAINE CORR 500 25.1.201/HA1272	N/A	N/A	I				0	0	0	0	0	0	0	0	0	N/A	5	0		
93		Cracks Repair - Ocean Drive, Ocean Terminal, Tower Place Parking Permission	14/06/2008	20/06/08 24/06/08 16/12/08 16/12/08 08/01/09	25.1.201/HA180 25.1.201/HA181 HAINE CORR 537 25.1.201/HA174/177	N		M	1	4	4	40,137	440	0	3,000	4,666	47,637	0	0	47,637	N/A	1A	0		

ITEM INFRACO NOTIFICATION OF THE CHANGE (INTC)

Notations/Supplements:
Approved NCC Order 1144

Item Ref	Ref. ID	Int Change Order TCO	Description	Date Notified	Date in Effect	Letter Ref	Approved/Amended?	Compendium Event	Type	Change Type	Pricing Method	Priority	SECS	Bilfinger	Comments	Value Estimate (GBP)			Allocation of Cost	Section	Risk
																Estimate	Estimate	Estimate			
101			Station Detail Full Planning	14/07/2008		01/15/03/02/04/LET-02038	N			1	4	3	0	0	0	0	0	0	N/A	7	0
						25.1.201/AM/056															
						IN INF CORR 025 174															
						25.1.201/AM/057															
						25.1.201/AM/058															
						25.1.201/AM/059															
						25.1.201/AM/060															
						25.1.201/AM/061															
						25.1.201/AM/062															
						25.1.201/AM/063															
102			Additional Output Prior Approvals	14/07/2008		25.1.201/AM/064	N			1	4	3	0	0	0	0	0	N/A	8	0	
						IN INF CORR 025 175															
						25.1.201/AM/065															
						25.1.201/AM/066															
						25.1.201/AM/067															
						25.1.201/AM/068															
						25.1.201/AM/069															
						25.1.201/AM/070															
						25.1.201/AM/071															
						25.1.201/AM/072															
103			Shuntwork Plans (RED) professional 7 rework	24/07/2008		25.1.201/AM/073	Y		M	4	4	4	48,867	0	0	6,428	48,847	0	58,742	10	0
						25.1.201/AM/074															
						25.1.201/AM/075															
						25.1.201/AM/076															
						25.1.201/AM/077															
						25.1.201/AM/078															
						25.1.201/AM/079															
						25.1.201/AM/080															
						25.1.201/AM/081															
						25.1.201/AM/082															
104			Bilfinger road Bridge Arming/ Technical Design	14/07/2008		25.1.201/AM/083	N			1	4	3	2,465	0	0	276	2,465	0	2,388	5	0
						25.1.201/AM/084															
						25.1.201/AM/085															
						25.1.201/AM/086															
						25.1.201/AM/087															
						25.1.201/AM/088															
						25.1.201/AM/089															
						25.1.201/AM/090															
						25.1.201/AM/091															
						25.1.201/AM/092															
105			Notified Drawings due to the issue of S05 Design programme V2.	11/08/2008		25.1.201/AM/093	N/A		M												
						25.1.201/AM/094															
						25.1.201/AM/095															
						25.1.201/AM/096															
						25.1.201/AM/097															
						25.1.201/AM/098															
						25.1.201/AM/099															
						25.1.201/AM/100															
						25.1.201/AM/101															
						25.1.201/AM/102															
106			Notified Drawings due to the issue of S02 Design programme V3.	11/08/2008		25.1.201/AM/103	N/A		M												
						25.1.201/AM/104															
						25.1.201/AM/105															
						25.1.201/AM/106															
						25.1.201/AM/107															
						25.1.201/AM/108															
						25.1.201/AM/109															
						25.1.201/AM/110															
						25.1.201/AM/111															
						25.1.201/AM/112															
107			Notified Drawings due to the issue of S05 Design programme V4.	11/08/2008		25.1.201/AM/113	N/A		M												
						25.1.201/AM/114															
						25.1.201/AM/115															
						25.1.201/AM/116															
						25.1.201/AM/117															
						25.1.201/AM/118															
						25.1.201/AM/119															
						25.1.201/AM/120															
						25.1.201/AM/121															
						25.1.201/AM/122															
108			Notified Drawings due to the issue of S05 Design programme V5.	11/08/2008		25.1.201/AM/123	N/A		M												
						25.1.201/AM/124															
						25.1.201/AM/125															
						25.1.201/AM/126															
						25.1.201/AM/127															
						25.1.201/AM/128															
						25.1.201/AM/129															
						25.1.201/AM/130															
						25.1.201/AM/131															
						25.1.201/AM/132															
109			Notified Drawings due to the issue of S05 Design programme V6.	11/08/2008		25.1.201/AM/133	N/A		M												
						25.1.201/AM/134															
						25.1.201/AM/135															
						25.1.201/AM/136															
						25.1.201/AM/137															
						25.1.201/AM/138															
						25.1.201/AM/139															
						25.1.201/AM/140															
						25.1.201/AM/141															
						25.1.201/AM/142															
110			Notified Drawings due to the issue of S05 Design programme V7.	11/08/2008		25.1.201/AM/143	N/A		M												
						25.1.201/AM/144															
						25.1.201/AM/145															
						25.1.201/AM/146															
						25.1.201/AM/147															
						25.1.201/AM/148															
						25.1.201/AM/149															
						25.1.201/AM/150															
						25.1.201/AM/151															
						25.1.201/AM/152															
111			Notified Drawings due to the issue of S05 Design programme V8.	11/08/2008		25.1.201/AM/153	N/A		M												
						25.1.201/AM/154															
						25.1.201/AM/155															
						25.1.201/AM/156															
						25.1.201/AM/157															
						25.1.201/AM/158															
						25.1.201/AM/159															
						25.1.201/AM/160															
						25.1.201/AM/161															
						25.1.201/AM/162															
112			Notified Drawings due to the issue of S05 Design programme V9.	11/08/2008		25.1.201/AM/163	N/A		M												
						25.1.201/AM/164															
						25.1.201/AM/165															
						25.1.201/AM/166															
						25.1.201/AM/167															
						25.1.201/AM/168															
						25.1.201/AM/169															
						25.1.201/AM/170															
						25.1.201/AM/171															
						25.1.201/AM/172															
113			Notified Drawings due to the issue of S05 Design programme V10.	11/08/2008		25.1.201/AM/173	N/A		M												
						25.1.201/AM/174															
						25.1.201/AM/175															
						25.1.201/AM/176															
						25.1.201/AM/177															
						25.1.201/AM/178															
						25.1.201/AM/179															
						25.1.201/AM/180															
						25.1.201/AM/181															
						25.1.201/AM/182															
114			Notified Drawings due to the issue of S05 Design programme V11.	11/08/2008		25.1.201/AM/183	N/A		M												
						25.1.201/AM/184															
						25.1.201/AM/185															
						25.1.201/AM/186															
						25.1.201/AM/187															
						25.1.201/AM/188															
						25.1.201/AM/189															
						25.1.201/AM/190															
						25.1.201/AM/191															
						25.1.201/AM/192															
115			Notified Drawings due to the issue of S05 Design programme V12.	11/08/2008		25.1.201/AM/193	N/A		M												
						25.1.201/AM/194															
						25.1.201/AM/195															
						25.1.201/AM/196															
						25.1.201/AM/197															
						25.1.201/AM/198															
						25.1.201/AM/199															
						25.1.201/AM/200															
						25.1.201/AM/201															
						25.1.201/AM/202															
116			Notified Drawings due to the issue of S05 Design programme V13.	11/08/2008		25.1.201/AM/203	N/A		M												
						25.1.201/AM/204															
						25.1.201/AM/205															
						25.1.201/AM/206															
						25.1.201/AM/207															
						25.1.201/AM/208															
						25.1.201/AM/209															
						25.1.201/AM/210															
						25.1.201/AM/211															
						25.1.201/AM/212															
117			Notified Drawings due to the issue of S05 Design programme V14.	11/08/2008		25.1.201/AM/213	N/A		M												
						25.1.201/AM/214															
						25.1.201/AM/215															
						25.1.201/AM/216															
						25.1.201/AM/217															
						25.1.201/AM/218															
						25.1.201/AM/219															
						25.1.201/AM/220															
						25.1.201/AM/221															
						25.1.201/AM/222															
118			Notified Drawings due to the issue of S05 Design programme V15.	11/08/2008		25.1.201/AM/223	N/A		M												
						25.1.201/AM/224															
						25.1.201/AM/225															
						25.1.201/AM/226															
						25.1.201/AM/227															
						25.1.201/AM/228															
						25.1.201/AM/229															
						25.1.201/AM/230															
						25.1.201/AM/231															
						25.1.201/AM/232															
119			Notified Drawings due to the issue of S05 Design programme V16.	11/08/2008		25.1.201/AM/233	N/A		M												
						25.1.201/AM/234															
						25.1.201/AM/235															
						25.1.201/AM/236															
						25.1.201/AM/237															
						25.1.201/AM/238															
						25.1.201/AM/239															
						25.1.201/AM/240															
						25.1.201/AM/241															
						25.1.201/AM/242															
120			Notified Drawings due to the issue of S05 Design programme V17.	11/08/2008		25.1.201/AM/243	N/A		M												
						25.1.201/AM/244															
						25.1.201/AM/245															
						25.1.201/AM/246															
						25.1.201/AM/247															
						25.1.201/AM/248															
						25.1.201/AM/249															
						25.1.201/AM/250															
						25.1.201/AM/251															
						25.1.201/AM/252															



ITEM INFRACO NOTIFICATION OF THE CHANGE (IMTC)

Medium/Significant
Approved/Not Order Valid

Item Ref	Ref. No.	Inf Change Order / ICD	Description	Date Refiled	Date of Issue	Letter Ref	Approved/Authorised?	Completion Event	Type	Change Type	Pricing Method	Priority	SECS	Blomberg	Services	Value Estimate (GBP)			Allocation of Cost	Section	Risk			
																Estimate	Estimate (cont)	Estimate (cont)						
211			IFC Drawing changes - Hydrant in form Shop	06/12/2008	13/11/08 19/11/08 23/01/09 03/02/09 06/03/09		TBA	Y	M	1	12.3	3	0	0	0	0	0	0	N/A	2A	0			
212			IFC Drawing changes - Hoops and Street Signage, including and Change Scheme 2A	06/12/2008	19/11/08 20/01/09		TBA	Y	M	1	12.3	3	0	0	0	0	0	0	N/A	2A	0			
213			IFC Drawing changes - Hydrant Street Substation	06/12/2008	13/11/08 19/11/08 02/01/09		TBA	Y	M	1	12.3	3	0	0	0	0	0	0	N/A	2A	0			
214			Allow bus traffic to continue to use existing along Princes Street during construction of tram track	06/12/2008	11/11/08		Y	Y	I	1	3	1	0	0	0	0	0	0	N/A	1C	0			
215	30		Demolition and installation of existing Bus Depot at Leith Wk	13/11/2008	20/11/08 30/01/09 19/02/09 25/02/09		Y	Redund under IMTC 130	I	1	3	3	0	0	0	0	0	0	N/A	1B	0			
216			Discovery of water pipe above formation level - Change 105 RHS	13/11/2008	20/11/08 12/12/08 20/01/09 20/01/09 20/01/09 20/02/09		Y	Y	I	1	4	2	0	0	0	0	0	0	VPS	2	1B	0		
217			Discovery of two ducts above formation level and during this line - Change 150 RHS	13/11/2008	20/11/08 12/12/08 20/01/09 20/01/09 20/02/09		Y	Y	I	1	4	2	0	0	0	0	0	0	0	VPS	2	1B	0	
218			Discovery of No. LV and No. LV cables above formation level - Change 102 RHS	13/11/2008	20/11/08 12/12/08 20/01/09 20/01/09 20/02/09		Y	Y	I	1	4	2	0	229	0	0	229	0	0	VPS	2	1B	0	
219			Discovery of Hydrant above formation level - Change 117 RHS	13/11/2008	20/11/08 12/12/08 20/01/09 20/01/09		N	Y	I	1	4	2	0	0	0	0	0	0	0	VPS	2	1B	0	
220			Discovery of Water connection pipework above formation level - Change 101 RHS	13/11/2008	20/11/08 12/12/08 20/01/09 20/01/09 20/02/09		Y	Y	I	1	4	2	0	0	0	0	0	0	0	0	VPS	2	1B	0
221			Discovery of 2400V AC power connection, connection of connection (along the new left line - Change 125 RHS)	13/11/2008	20/11/08 12/12/08 20/01/09 20/01/09 20/02/09		Y	Y	I	1	4	2	0	0	0	0	0	0	0	0	VPS	2	1B	0
222			Discovery of water with a hydrant being the new left line - Change 120 RHS	13/11/2008	20/11/08 12/12/08 20/01/09 20/01/09 20/02/09		N	Y	I	1	4	2	0	0	0	0	0	0	0	0	VPS	2	1B	0
223			Discovery of stone culvert - Change 100 RHS	17/11/2008	09/11/08 12/12/08 20/01/09 20/01/09 20/02/09		Y	Y	I	1	4	2	0	0	0	0	0	0	0	0	VPS	2	1B	0
224			Discovery of 2400V AC power connection, connection of connection (along the new left line - Change 101 RHS)	17/11/2008	20/11/08 09/01/09 20/01/09 20/01/09 20/02/09		N/A	Y	I	1	4	2	0	0	0	0	0	0	0	0	VPS	2	1B	0
225			Discovery of water connection pipework above formation level - Change 119 RHS	17/11/2008	09/01/09 20/01/09 20/01/09 20/02/09		Y	Y	I	1	4	2	0	364	0	0	364	0	0	0	N/A	1B	0	
226			Operational Design Review of Depot - changes arising	25/11/2008	20/02/09 11/03/09		TBA	Y	I	1	1,2,3,4	4	0	0	0	0	0	0	0	0	N/A	6	0	
227			Operational Design Review of Haymarket - changes arising	25/11/2008	20/02/09		TBA	Y	I	1	1,2,3,4	3	0	0	0	0	0	0	0	0	N/A	2A	0	

Notations/Supplements:

Ref	Ref. No.	Alt. Change Order / TOC	Description	Date Referred	Date of Issue	Letter Ref	Approved / Proposed?	Compensation Event	Type	Change Type	Priority	Value Estimate (GBP)	OT & P	Program	Program	Allocations of Cost	Section	Final Agreed Value	

- Notes:
- Notified Dependent Elements for Change
 - Notified in the Instruction
 - Notified in the Instruction for Change
 - Notified in the Instruction
- Change Type:
1. M Change
 2. B Change
 3. C Change
 4. A Change
 5. L Change
 6. Q Change
 7. S Change
 8. T Change
 9. U Change
 10. V Change
 11. W Change
 12. X Change
 13. Y Change
 14. Z Change
- Priority:
1. Schedule of Rates
 2. Defined Rates
 3. Defined Rates
 4. Defined Rates
- Priority:
1. Work in progress January 2009
 2. Work complete December 2009
 3. Work in progress April 2009
 4. Work post April 2009
3. Consortium Partner and Site Section
- Allocation of Cost:
- GPS: Defined Provisional Sum
 - VE: Provisional Sum
 - PVE: Value Engineering
 - NA: Further Value Engineering
 - NA: None of the above





ETN INFRACO NOTIFICATION OF THE CHANGE (INTC)
CONFIDENTIAL

Ref	INTC NUMBER	INTC NUMBER	S4 Change Order	Description	Date Notified	Date of further letters	Letter Ref	Agreed in Principle?	Type	Change Type	Pricing Method	Priority	SOS	Billings	Surrender	E Submitted	Value Estimate (GBP)	E Agreed	E Not Agreed	Allocation of Cost	Section	Pilot Agreed Cost	
																							From or To
1				Failure of the SDS Provider to achieve the release of IFC drawings by the dated identified in Programme - Section 5A - Rows, ledges, footways, paved areas, drainage, lighting and	21/01/2009	11/02/09 19/02/09	25.1.2010MRH1318 NF CORR 743																
2				Failure of the SDS Provider to achieve the release of IFC drawings by the dated identified in Programme - Section 5C - Rows, ledges, footways, paved areas, drainage, lighting and	14/01/2009	12/02/09 19/02/09	25.1.2010MRH1368 NF CORR 729																
3				Failure of the SDS Provider to achieve the release of IFC drawings by the dated identified in Programme - Section 7A - Rows, ledges, footways, paved areas, drainage, lighting and	16/01/2009	11/02/09 19/02/09	25.1.2010MRH1358 NF CORR 744																
4				Failure of the SDS Provider to achieve the release of IFC drawings by the dated identified in Programme - Section 7A - Rows, ledges, footways, paved areas, drainage, lighting and	23/01/2009	12/02/09	25.1.2010MRH1365 NF CORR 730																
5				Failure of the SDS Provider to achieve the release of IFC drawings by the dated identified in Programme - Section 1B - Rows, ledges, footways, paved areas, drainage, lighting and	19/12/2008	26/01/09 19/02/09	25.1.2010MRH1300 NF CORR 728																
6				Failure of the SDS Provider to achieve the release of IFC drawings by the dated identified in Programme - Section 2A - Rows, ledges, footways, paved areas, drainage, lighting and	12/01/2009	12/02/09	25.1.2010MRH1078 NF CORR 728																
7				Failure of the SDS Provider to achieve the release of IFC drawings by the dated identified in Programme - Section 2A - Rows, ledges, footways, paved areas, drainage, lighting and	11/02/2008	12/02/09	25.1.2010MRH1038 NF CORR 717																
8				Failure of the SDS Provider to achieve the release of IFC drawings by the dated identified in Programme - Section 2A - Rows, ledges, footways, paved areas, drainage, lighting and	05/12/2008	20/01/09 19/02/09	25.1.2010MRH1386 NF CORR 802																
9				Failure of the SDS Provider to achieve the release of IFC drawings by the dated identified in Programme - Section 2A - Rows, ledges, footways, paved areas, drainage, lighting and	05/12/2008	20/01/09 19/02/09	25.1.2010MRH1386 NF CORR 803																
10				Failure of the SDS Provider to achieve the release of IFC drawings by the dated identified in Programme - Section 2A - Rows, ledges, footways, paved areas, drainage, lighting and	22/01/2009	19/02/09	25.1.2010MRH1223 NF CORR 878																
11				Failure of the SDS Provider to achieve the release of IFC drawings by the dated identified in Programme - Section 2A - Rows, ledges, footways, paved areas, drainage, lighting and	22/01/2009	19/02/09	25.1.2010MRH1226 NF CORR 879																
12				Failure of the SDS Provider to achieve the release of IFC drawings by the dated identified in Programme - Section 2A - Rows, ledges, footways, paved areas, drainage, lighting and	22/01/2009	19/02/09	25.1.2010MRH1227 NF CORR 882																
13				Failure of the SDS Provider to achieve the release of IFC drawings by the dated identified in Programme - Section 2A - Rows, ledges, footways, paved areas, drainage, lighting and	22/01/2009	19/02/09	25.1.2010MRH1228 NF CORR 883																
14				Failure of the SDS Provider to achieve the release of IFC drawings by the dated identified in Programme - Section 2A - Rows, ledges, footways, paved areas, drainage, lighting and	22/01/2009	19/02/09	25.1.2010MRH1229 NF CORR 884																
15				Failure of the SDS Provider to achieve the release of IFC drawings by the dated identified in Programme - Section 2A - Rows, ledges, footways, paved areas, drainage, lighting and	22/01/2009	19/02/09	25.1.2010MRH1230 NF CORR 885																
16				Failure of the SDS Provider to achieve the release of IFC drawings by the dated identified in Programme - Section 2A - Rows, ledges, footways, paved areas, drainage, lighting and	22/01/2009	19/02/09	25.1.2010MRH1231 NF CORR 886																
17				Failure of the SDS Provider to achieve the release of IFC drawings by the dated identified in Programme - Section 2A - Rows, ledges, footways, paved areas, drainage, lighting and	22/01/2009	19/02/09	25.1.2010MRH1232 NF CORR 887																
18				Failure of the SDS Provider to achieve the release of IFC drawings by the dated identified in Programme - Section 2A - Rows, ledges, footways, paved areas, drainage, lighting and	22/01/2009	19/02/09	25.1.2010MRH1233 NF CORR 888																
19				Failure of the SDS Provider to achieve the release of IFC drawings by the dated identified in Programme - Section 2A - Rows, ledges, footways, paved areas, drainage, lighting and	22/01/2009	19/02/09	25.1.2010MRH1234 NF CORR 889																
20				Failure of the SDS Provider to achieve the release of IFC drawings by the dated identified in Programme - Section 2A - Rows, ledges, footways, paved areas, drainage, lighting and	22/01/2009	19/02/09	25.1.2010MRH1235 NF CORR 890																
21				Failure of the SDS Provider to achieve the release of IFC drawings by the dated identified in Programme - Section 2A - Rows, ledges, footways, paved areas, drainage, lighting and	22/01/2009	19/02/09	25.1.2010MRH1236 NF CORR 891																
22				Failure of the SDS Provider to achieve the release of IFC drawings by the dated identified in Programme - Section 2A - Rows, ledges, footways, paved areas, drainage, lighting and	22/01/2009	19/02/09	25.1.2010MRH1237 NF CORR 892																
23				Failure of the SDS Provider to achieve the release of IFC drawings by the dated identified in Programme - Section 2A - Rows, ledges, footways, paved areas, drainage, lighting and	22/01/2009	19/02/09	25.1.2010MRH1238 NF CORR 893																
24				Failure of the SDS Provider to achieve the release of IFC drawings by the dated identified in Programme - Section 2A - Rows, ledges, footways, paved areas, drainage, lighting and	22/01/2009	19/02/09	25.1.2010MRH1239 NF CORR 894																
25				Failure of the SDS Provider to achieve the release of IFC drawings by the dated identified in Programme - Section 2A - Rows, ledges, footways, paved areas, drainage, lighting and	22/01/2009	19/02/09	25.1.2010MRH1240 NF CORR 895																
26				Failure of the SDS Provider to achieve the release of IFC drawings by the dated identified in Programme - Section 2A - Rows, ledges, footways, paved areas, drainage, lighting and	22/01/2009	19/02/09	25.1.2010MRH1241 NF CORR 896																
27				Failure of the SDS Provider to achieve the release of IFC drawings by the dated identified in Programme - Section 2A - Rows, ledges, footways, paved areas, drainage, lighting and	22/01/2009	19/02/09	25.1.2010MRH1242 NF CORR 897																
28				Failure of the SDS Provider to achieve the release of IFC drawings by the dated identified in Programme - Section 2A - Rows, ledges, footways, paved areas, drainage, lighting and	22/01/2009	19/02/09	25.1.2010MRH1243 NF CORR 898																
29				Failure of the SDS Provider to achieve the release of IFC drawings by the dated identified in Programme - Section 2A - Rows, ledges, footways, paved areas, drainage, lighting and	22/01/2009	19/02/09	25.1.2010MRH1244 NF CORR 899																
30				Failure of the SDS Provider to achieve the release of IFC drawings by the dated identified in Programme - Section 2A - Rows, ledges, footways, paved areas, drainage, lighting and	22/01/2009	19/02/09	25.1.2010MRH1245 NF CORR 900																
31				Failure of the SDS Provider to achieve the release of IFC drawings by the dated identified in Programme - Section 2A - Rows, ledges, footways, paved areas, drainage, lighting and	22/01/2009	19/02/09	25.1.2010MRH1246 NF CORR 901																



ETN INFRACO NOTIFICATION OF THE CHANGE (INTC)
CONFIDENTIAL

Ref	INTC NUMBER	INTC ORDER	Description	Date Notified	Date of further letters	Letter Ref	Agreed in Principle?	Type*	Change Type	Pricing Method	Priority	Value Estimate (GBP)				Section	Post Agreed Cost	
												From	To	Agreed	Not Agreed			
32		14	Water main and sewer diversions at the airport	05/01/2008	200108 200109 200110 06/02/08	25.1.2010MHH1238 NF CORR 597 25.1.2010MHH1984 NF CORR 598 25.1.2010MHH1508												
33		15	Water main and sewer diversions at the airport	05/01/2008	200109 200110 04/02/08	25.1.2010MHH1238 NF CORR 597 25.1.2010MHH1984 NF CORR 598 25.1.2010MHH1508												
34		18	Water main and sewer diversions at the airport	05/01/2008	200109 200110 04/02/08	25.1.2010MHH1238 NF CORR 597 25.1.2010MHH1984 NF CORR 598 25.1.2010MHH1508												
35	2	51	Transfer of (S&W) Diversions from MUDFA to INFRACO Sections 5A	28/11/2008	05/01/09 200109 200110 06/02/08	25.1.2010MHH1238 NF CORR 608 25.1.2010MHH1984 NF CORR 609 25.1.2010MHH1508												
36	3	52	Transfer of (S&W) Diversions from MUDFA to INFRACO Sections 5B	28/11/2008	05/01/09 200109 200110 06/02/08	25.1.2010MHH1238 NF CORR 617 25.1.2010MHH1984 NF CORR 618 25.1.2010MHH1508												
37	4	53	Transfer of (S&W) Diversions from MUDFA to INFRACO Sections 5C	28/11/2008	18/12/08 200109 200110 06/02/08	25.1.2010MHH1238 NF CORR 617 25.1.2010MHH1984 NF CORR 618 25.1.2010MHH1508												
38		69	Day Stop Retaining Wall	19/12/2008	200109 200110	25.1.2010MHH1178 NF CORR 810 25.1.2010MHH1984 NF CORR 811												
39		70	Delivery completion of MUDFA Works at Barnhead, Bannockburn	19/12/2008	200109 200110 05/01/09	25.1.2010MHH1178 NF CORR 810 25.1.2010MHH1984 NF CORR 811												
40	10	96	Delivery completion of MUDFA Works at Barnhead, Bannockburn	28/11/08	18/12/08 200109 200110 05/01/09	25.1.2010MHH1183 NF CORR 810 25.1.2010MHH1984 NF CORR 811												
41		91	Estimate all works arising from unstable ground conditions	12/01/2008	13/02/08 200209	25.1.2010MHH1892 NF CORR 810												
42		117	Extra demolition required at Rural Road retaining wall to Reclaim Street Cells and Reservoir Garage	21/01/108	13/02/08 200209	25.1.2010MHH1892 NF CORR 810												
43		151	Removal Works to Services Diversions due to non-compliance by MUDFA	01/12/2008	18/12/08 200109 200110 06/02/08	25.1.2010MHH1488 NF CORR 810 25.1.2010MHH1984 NF CORR 811 25.1.2010MHH1508												
44		173	Discovery of underground petrol tank at National Car Rental Site	21/01/2008	13/02/08 200209	25.1.2010MHH1892 NF CORR 810												
45		174	BT Cables under cables CSMS-365 NHS Leith Walk	01/12/2008	18/12/08 200109 200110 06/02/08	25.1.2010MHH1892 NF CORR 810 25.1.2010MHH1984 NF CORR 811												
46		184	Removal Works to Services Diversions due to non-compliance by MUDFA	01/12/2008	18/12/08 200109 200110 06/02/08	25.1.2010MHH1488 NF CORR 810 25.1.2010MHH1984 NF CORR 811												
47		185	Dealing with utilities conflicting with reconnection of road kerbs and road widening Leith Walk	01/12/2008	18/12/08 200109 200110 06/02/08	25.1.2010MHH1488 NF CORR 810 25.1.2010MHH1984 NF CORR 811												
48		189	Dealing with utilities conflicting with reconnection of road kerbs and road widening Leith Walk	01/12/2008	18/12/08 200109 200110 06/02/08	25.1.2010MHH1488 NF CORR 810 25.1.2010MHH1984 NF CORR 811												
49		180	Dealing with utilities conflicting with reconnection of road kerbs and road widening Leith Walk	01/12/2008	18/12/08 200109 200110 06/02/08	25.1.2010MHH1488 NF CORR 810 25.1.2010MHH1984 NF CORR 811												
50		191	Dealing with utilities conflicting with reconnection of road kerbs and road widening Leith Walk	01/12/2008	18/12/08 200109 200110 06/02/08	25.1.2010MHH1488 NF CORR 810 25.1.2010MHH1984 NF CORR 811												
51		192	Dealing with utilities conflicting with reconnection of road kerbs and road widening Leith Walk	01/12/2008	18/12/08 200109 200110 06/02/08	25.1.2010MHH1488 NF CORR 810 25.1.2010MHH1984 NF CORR 811												
52		193	Dealing with utilities conflicting with reconnection of road kerbs and road widening Leith Walk	01/12/2008	18/12/08 200109 200110 06/02/08	25.1.2010MHH1488 NF CORR 810 25.1.2010MHH1984 NF CORR 811												
53		194	Dealing with utilities conflicting with reconnection of road kerbs and road widening Leith Walk	01/12/2008	18/12/08 200109 200110 06/02/08	25.1.2010MHH1488 NF CORR 810 25.1.2010MHH1984 NF CORR 811												



ETN INFRACO NOTIFICATION OF THE CHANGE (INTC)
CONFIDENTIAL

Ref	INTC NUMBER	INTC ORDER	IN Change Order	Description	Date Notified	Date of further letters	Letter Ref	Agreed in Principle?	Type	Change Type	Pricing Method	Priority	SCS	Edinger	Stevens	Submittal	Value Estimate (GBP)	Comments	FCP	E Agreed	E Not Agreed	Allocation of Cost	Section	Post Agreed Cost
54	195	201	201	Dealing with utilities conflicting with reconnection of road kerbs and road widening Leith Walk.	01/12/2008	19/12/2008	25.1.2010MWH1067																	
55	201	201	201	Scouring Gas Networks - Gas Main protection at Culvert no 2 Leith Walk, Christmas Embankment	20/11/2008	19/12/2008	25.1.2010MWH1068																	
56	218	218	218	Dealing with utilities conflicting with reconnection of road kerbs and road widening Leith Walk.	01/12/2008	19/12/2008	25.1.2010MWH1069																	
57	217	217	217	Dealing with utilities conflicting with reconnection of road kerbs and road widening Leith Walk.	01/12/2008	19/12/2008	25.1.2010MWH1070																	
58	218	218	218	Dealing with utilities conflicting with reconnection of road kerbs and road widening Leith Walk.	01/12/2008	19/12/2008	25.1.2010MWH1071																	
59	217	217	217	Dealing with utilities conflicting with reconnection of road kerbs and road widening Leith Walk.	01/12/2008	19/12/2008	25.1.2010MWH1072																	
60	218	218	218	Dealing with utilities conflicting with reconnection of road kerbs and road widening Leith Walk.	01/12/2008	19/12/2008	25.1.2010MWH1073																	
61	219	219	219	Dealing with utilities conflicting with reconnection of road kerbs and road widening Leith Walk.	01/12/2008	19/12/2008	25.1.2010MWH1074																	
62	220	220	220	Dealing with utilities conflicting with reconnection of road kerbs and road widening Leith Walk.	01/12/2008	19/12/2008	25.1.2010MWH1075																	
63	221	221	221	Dealing with utilities conflicting with reconnection of road kerbs and road widening Leith Walk.	01/12/2008	19/12/2008	25.1.2010MWH1076																	
64	222	222	222	Dealing with utilities conflicting with reconnection of road kerbs and road widening Leith Walk.	01/12/2008	19/12/2008	25.1.2010MWH1077																	
65	223	223	223	Dealing with utilities conflicting with reconnection of road kerbs and road widening Leith Walk.	01/12/2008	19/12/2008	25.1.2010MWH1078																	
66	224	224	224	Dealing with utilities conflicting with reconnection of road kerbs and road widening Leith Walk.	01/12/2008	19/12/2008	25.1.2010MWH1079																	
67	225	225	225	Dealing with utilities conflicting with reconnection of road kerbs and road widening Leith Walk.	01/12/2008	19/12/2008	25.1.2010MWH1080																	
68	228	228	228	Dealing with utilities conflicting with reconnection of road kerbs and road widening Leith Walk.	01/12/2008	19/12/2008	25.1.2010MWH1081																	
69	241	241	241	Section 5 - MUEFA works at Bainshead Drive	12/12/2008	19/12/2008	25.1.2010MWH1082																	
70	245	245	245	SRU Murrayfield - Major Event Notification - 17 June 2009	19/12/2008	19/12/2008	25.1.2010MWH1083																	
71	267	267	267	Section 5C - Scotiabank Water Diversion at Coglar Roundabout	05/01/2009	19/12/2008	25.1.2010MWH1084																	
72	269	269	269	Section 5C - Scotiabank Water Diversion at Coglar Roundabout	05/01/2009	19/12/2008	25.1.2010MWH1085																	
73	272	272	272	Extra works to allow formation at Carrick Knowe Change	09/01/2009	19/12/2008	25.1.2010MWH1086																	
74	33	273	273	Extra works to change signage & construct Retaining Wall M14	26/01/2009	19/12/2008	25.1.2010MWH1087																	
75	274	274	274	Introduction - Project Street Construction Works	16/01/2009	19/12/2008	25.1.2010MWH1088																	
76	131	274	274	Failure of the SDS Provider to achieve the release of PC	29/02/2009	19/12/2008	25.1.2010MWH1089																	
77	285	285	285	Failure of the SDS Provider to achieve the release of PC	04/02/2009	19/12/2008	25.1.2010MWH1090																	
78	285	285	285	Failure of the SDS Provider to achieve the release of PC	04/02/2009	19/12/2008	25.1.2010MWH1091																	
79	285	285	285	Failure of the SDS Provider to achieve the release of PC	04/02/2009	19/12/2008	25.1.2010MWH1092																	
80	285	285	285	Failure of the SDS Provider to achieve the release of PC	04/02/2009	19/12/2008	25.1.2010MWH1093																	



ETN INFRACO NOTIFICATION OF THE CHANGE (INTC)

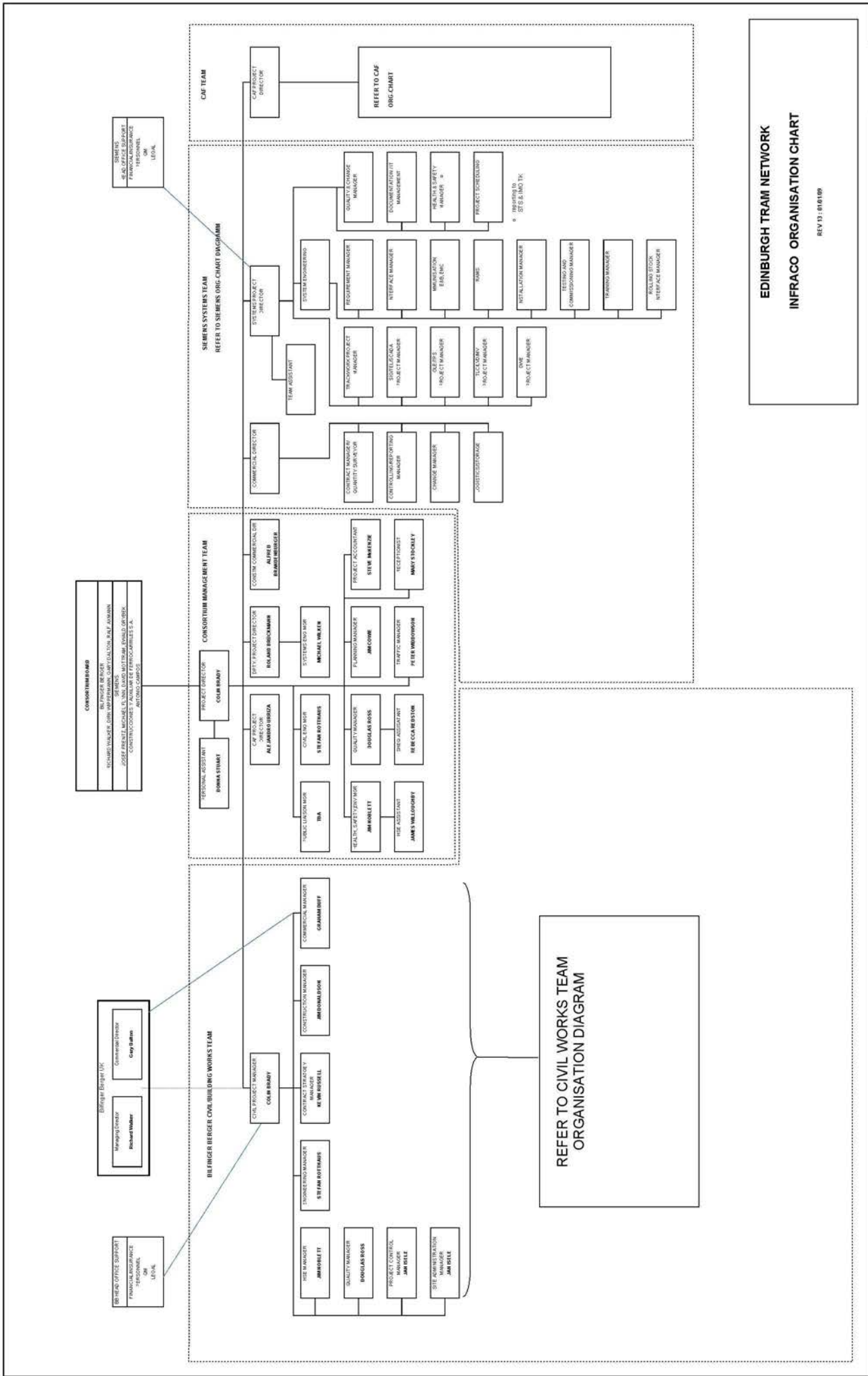
CONFIDENTIAL

Ref	INTC NUMBER	INTC NUMBER	S4 Change Order	Description	Date Notified	Date of further letters	Letter Ref	Agreed in Principle?	Type	Change Type	Pricing Method	Priority	Value Estimate (GBP)					Total Agreed	Allocation of Cost	Section	PST Agreed Cost					
													SCS	Edinger	Services	Sub-Work	Other P					Others	FCP	E Agreed	E Not Agreed	From or To
81				Failure of the SCS Provider to achieve the release of JFC drawings by the date identified in the Programme - Section 1A - Edinger connection with Network Rail (Edinburgh to Edinburgh Park)	10/02/2009		25.1.2010MRH1817																			
82		300		Failure of the SCS Provider to achieve the release of JFC drawings by the date identified in the Programme - Section 1B - Edinger connection with Network Rail (Edinburgh to Edinburgh Park)	10/02/2009		25.1.2010MRH1815																			
83		292		Failure of the SCS Provider to achieve the release of JFC drawings by the date identified in the Programme - Section 1C - Edinger connection with Network Rail (Edinburgh to Edinburgh Park)	10/02/2009		25.1.2010MRH1814																			
84		289		Failure of the SCS Provider to achieve the release of JFC drawings by the date identified in the Programme - Section 1D - Edinger connection with Network Rail (Edinburgh to Edinburgh Park)	10/02/2009		25.1.2010MRH1813																			
85		292		Failure of the SCS Provider to achieve the release of JFC drawings by the date identified in the Programme - Section 1E - Edinger connection with Network Rail (Edinburgh to Edinburgh Park)	10/02/2009		25.1.2010MRH1812																			
86		285		Failure of the SCS Provider to achieve the release of JFC drawings by the date identified in the Programme - Section 1F - Edinger connection with Network Rail (Edinburgh to Edinburgh Park)	10/02/2009		25.1.2010MRH1811																			
87		240		Failure of the SCS Provider to achieve the release of JFC drawings by the date identified in the Programme - Section 1G - Edinger connection with Network Rail (Edinburgh to Edinburgh Park)	10/02/2009		25.1.2010MRH1810																			
88				Failure of the SCS Provider to achieve the release of JFC drawings by the date identified in the Programme - Section 1H - Edinger connection with Network Rail (Edinburgh to Edinburgh Park)	10/02/2009		25.1.2010MRH1809																			
89				Failure of the SCS Provider to achieve the release of JFC drawings by the date identified in the Programme - Section 1I - Edinger connection with Network Rail (Edinburgh to Edinburgh Park)	10/02/2009		25.1.2010MRH1808																			
90		302		Failure of the SCS Provider to achieve the release of JFC drawings by the date identified in the Programme - Section 1J - Edinger connection with Network Rail (Edinburgh to Edinburgh Park)	10/02/2009		25.1.2010MRH1807																			
91		283		Failure of the SCS Provider to achieve the release of JFC drawings by the date identified in the Programme - Section 1K - Edinger connection with Network Rail (Edinburgh to Edinburgh Park)	10/02/2009		25.1.2010MRH1806																			
92		298		Failure of the SCS Provider to achieve the release of JFC drawings by the date identified in the Programme - Section 1L - Edinger connection with Network Rail (Edinburgh to Edinburgh Park)	10/02/2009		25.1.2010MRH1805																			
93		305		Failure of the SCS Provider to achieve the release of JFC drawings by the date identified in the Programme - Section 1M - Edinger connection with Network Rail (Edinburgh to Edinburgh Park)	10/02/2009		25.1.2010MRH1804																			
94				Failure of the SCS Provider to achieve the release of JFC drawings by the date identified in the Programme - Section 1N - Edinger connection with Network Rail (Edinburgh to Edinburgh Park)	10/02/2009		25.1.2010MRH1803																			
95				Failure of the SCS Provider to achieve the release of JFC drawings by the date identified in the Programme - Section 1O - Edinger connection with Network Rail (Edinburgh to Edinburgh Park)	10/02/2009		25.1.2010MRH1802																			
96				Failure of the SCS Provider to achieve the release of JFC drawings by the date identified in the Programme - Section 1P - Edinger connection with Network Rail (Edinburgh to Edinburgh Park)	10/02/2009		25.1.2010MRH1801																			
97				Failure of the SCS Provider to achieve the release of JFC drawings by the date identified in the Programme - Section 1Q - Edinger connection with Network Rail (Edinburgh to Edinburgh Park)	10/02/2009		25.1.2010MRH1800																			
98		284		Failure of the SCS Provider to achieve the release of JFC drawings by the date identified in the Programme - Section 1R - Edinger connection with Network Rail (Edinburgh to Edinburgh Park)	10/02/2009		25.1.2010MRH1799																			
99				Failure of the SCS Provider to achieve the release of JFC drawings by the date identified in the Programme - Section 1S - Edinger connection with Network Rail (Edinburgh to Edinburgh Park)	10/02/2009		25.1.2010MRH1798																			
100				Failure of the SCS Provider to achieve the release of JFC drawings by the date identified in the Programme - Section 1T - Edinger connection with Network Rail (Edinburgh to Edinburgh Park)	10/02/2009		25.1.2010MRH1797																			
101				Failure of the SCS Provider to achieve the release of JFC drawings by the date identified in the Programme - Section 1U - Edinger connection with Network Rail (Edinburgh to Edinburgh Park)	10/02/2009		25.1.2010MRH1796																			
102				Failure of the SCS Provider to achieve the release of JFC drawings by the date identified in the Programme - Section 1V - Edinger connection with Network Rail (Edinburgh to Edinburgh Park)	10/02/2009		25.1.2010MRH1795																			
103				Failure of the SCS Provider to achieve the release of JFC drawings by the date identified in the Programme - Section 1W - Edinger connection with Network Rail (Edinburgh to Edinburgh Park)	10/02/2009		25.1.2010MRH1794																			
104				Failure of the SCS Provider to achieve the release of JFC drawings by the date identified in the Programme - Section 1X - Edinger connection with Network Rail (Edinburgh to Edinburgh Park)	10/02/2009		25.1.2010MRH1793																			
105				Failure of the SCS Provider to achieve the release of JFC drawings by the date identified in the Programme - Section 1Y - Edinger connection with Network Rail (Edinburgh to Edinburgh Park)	10/02/2009		25.1.2010MRH1792																			
106				Failure of the SCS Provider to achieve the release of JFC drawings by the date identified in the Programme - Section 1Z - Edinger connection with Network Rail (Edinburgh to Edinburgh Park)	10/02/2009		25.1.2010MRH1791																			
107				Failure of the SCS Provider to achieve the release of JFC drawings by the date identified in the Programme - Section 1AA - Edinger connection with Network Rail (Edinburgh to Edinburgh Park)	10/02/2009		25.1.2010MRH1790																			
108				Failure of the SCS Provider to achieve the release of JFC drawings by the date identified in the Programme - Section 1AB - Edinger connection with Network Rail (Edinburgh to Edinburgh Park)	10/02/2009		25.1.2010MRH1789																			
109				Failure of the SCS Provider to achieve the release of JFC drawings by the date identified in the Programme - Section 1AC - Edinger connection with Network Rail (Edinburgh to Edinburgh Park)	10/02/2009		25.1.2010MRH1788																			
110				Failure of the SCS Provider to achieve the release of JFC drawings by the date identified in the Programme - Section 1AD - Edinger connection with Network Rail (Edinburgh to Edinburgh Park)	10/02/2009		25.1.2010MRH1787																			

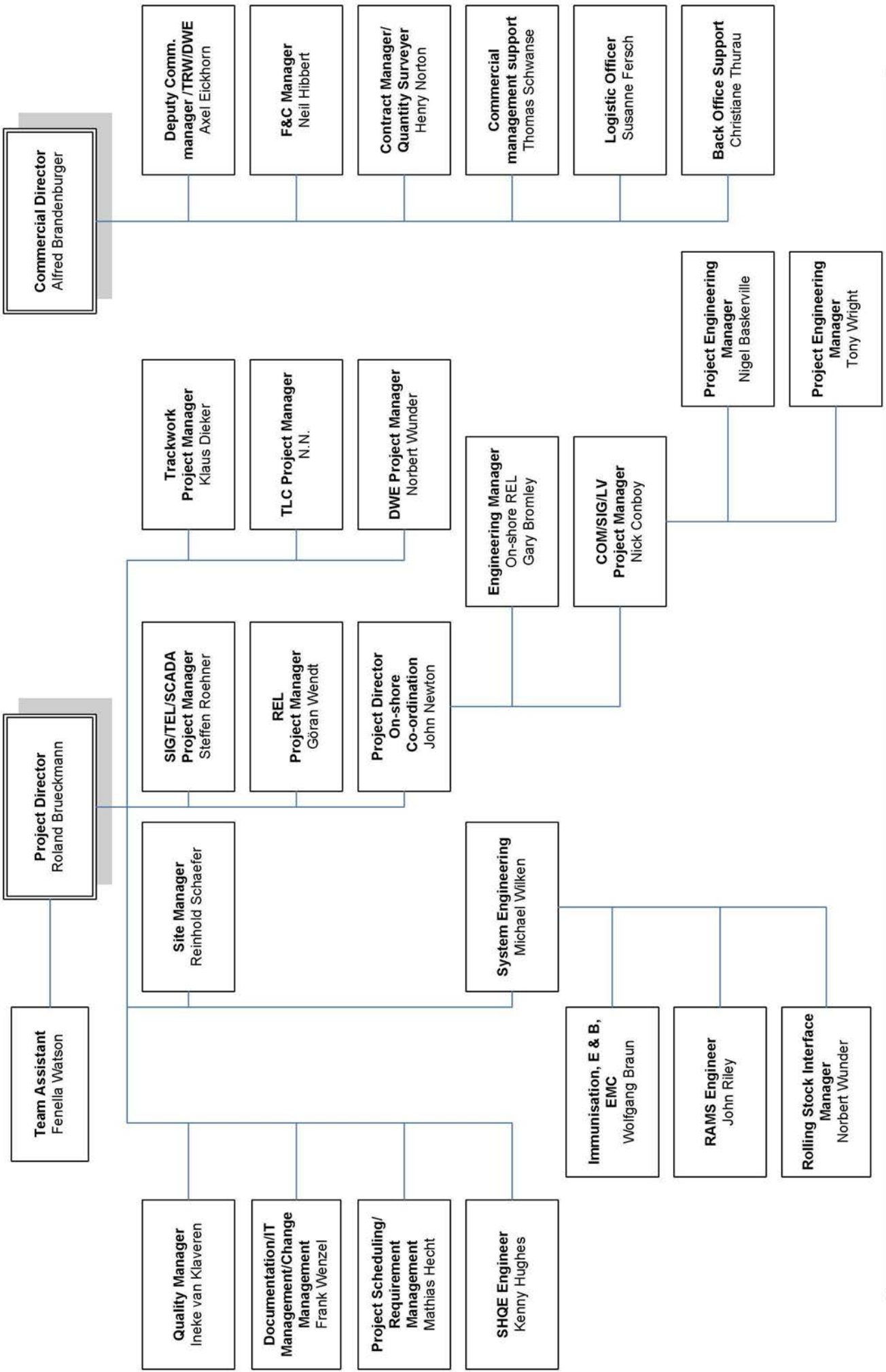
Item	Description	Quantity	Unit	Material	Cost	Notes	Response required	Comments
14	14-AE Outgaskets - various materials	800,000						
15	15-010000 Sheet Pile - Various materials	1,375,000						
16	16-010000 Sheet Pile - Various materials	150,000						
17	17-010000 Sheet Pile - Various materials	250,000						
18	18-010000 Sheet Pile - Various materials	300,000						
19	19-010000 Sheet Pile - Various materials	300,000						
20	20-010000 Sheet Pile - Various materials	100,000						
21	21-010000 Sheet Pile - Various materials	300,000						
22	22-010000 Sheet Pile - Various materials	500,000						
23	23-010000 Sheet Pile - Various materials	50,000						
24	24-010000 Sheet Pile - Various materials	300,000						
25	25-010000 Sheet Pile - Various materials	487,000						
26	26-010000 Sheet Pile - Various materials	9,883,000						
27	27-010000 Sheet Pile - Various materials	300,000						
28	28-010000 Sheet Pile - Various materials	600,000						
29	29-010000 Sheet Pile - Various materials	500,000						
30	30-010000 Sheet Pile - Various materials	600,000						
31	31-010000 Sheet Pile - Various materials	600,000						
32	32-010000 Sheet Pile - Various materials	970,000						

Item	Description	Quantity	Unit	Material	Cost	Notes	Response required	Comments
33	33-010000 Sheet Pile - Various materials	300,000						
34	34-010000 Sheet Pile - Various materials	600,000						
35	35-010000 Sheet Pile - Various materials	500,000						
36	36-010000 Sheet Pile - Various materials	600,000						
37	37-010000 Sheet Pile - Various materials	600,000						
38	38-010000 Sheet Pile - Various materials	970,000						

10.8 Organisation Charts



EDINBURGH TRAM NETWORK
INFRACO ORGANISATION CHART
 REV 13: 01/10/09



ETN SPM Organisation Chart

ETN(SPM\$MG&ADB#050440

Rev C

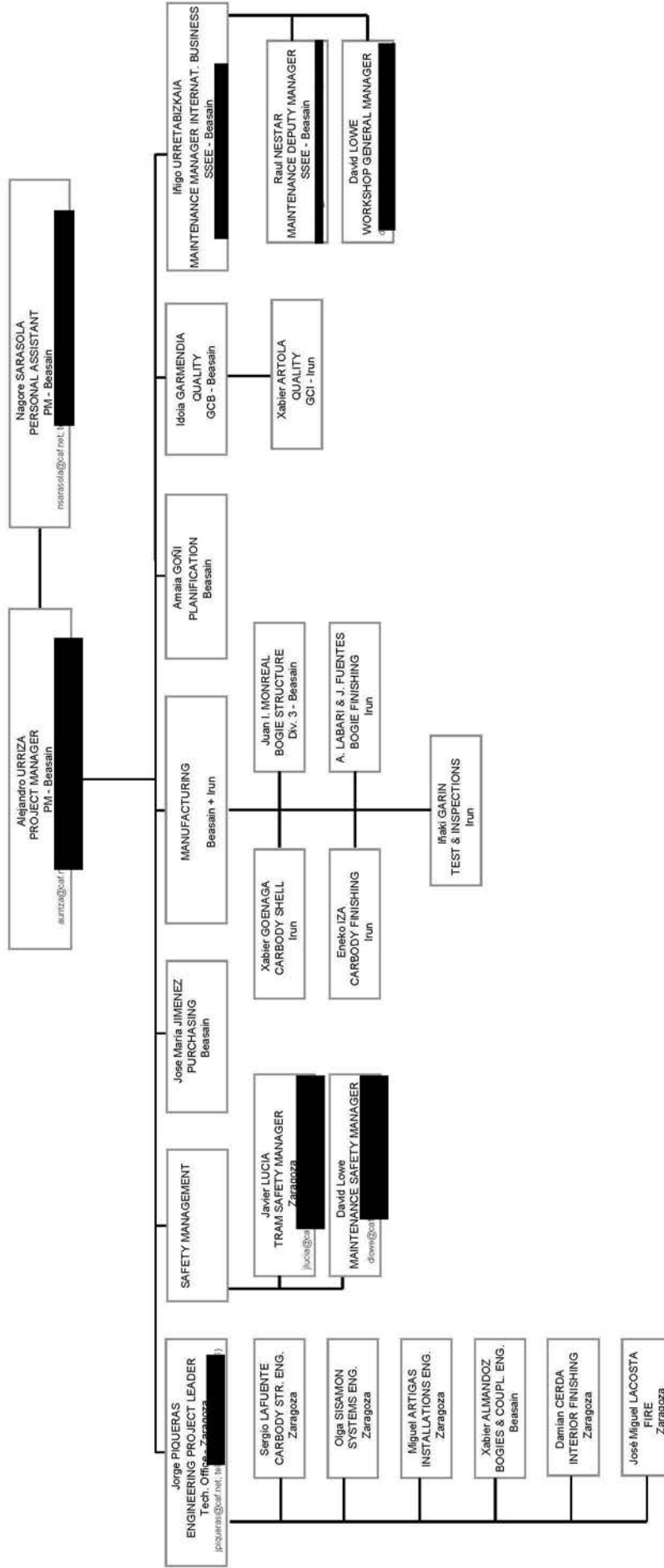
11.03.2009

Checked: I. van Klaveren
Released: R. Brueckmann



CONSTRUCCIONES Y AUXILIAR DE FERROCARRILES S.A.

Construcciones y Auxiliar de Ferrocarriles, S.A.



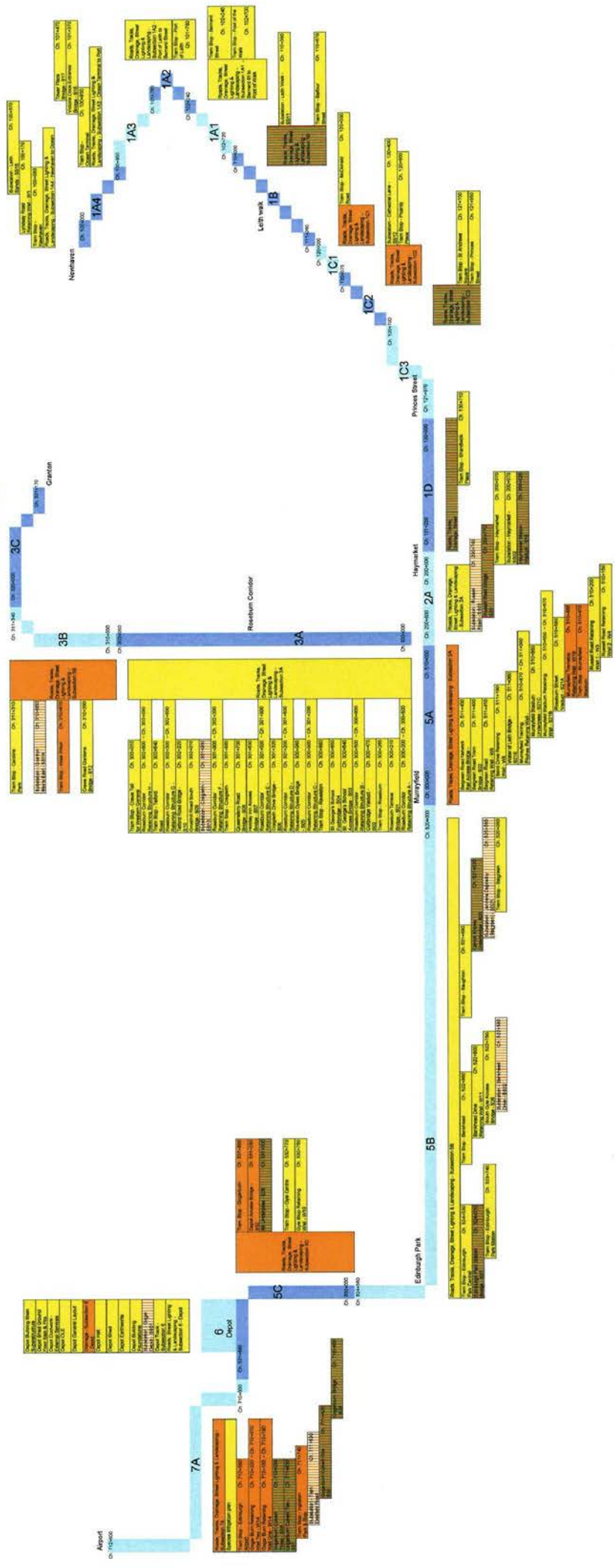
EDINBURGH TRAM NETWORK – ETN
CAF Organizational Chart - V1.1
 2009/01/23

10.9 Production of Design

Design Package Tracker

16/03/2009

System Wide:



- 0 Not Started
- 1 Not Approved/Not Started
- 2 Not Approved/Not Started
- 3 Not Approved/Not Started
- 4 Not Approved/Not Started
- 5 Not Approved/Not Started
- 6 Not Approved/Not Started
- 7 Not Approved/Not Started
- 8 Not Approved/Not Started

10.9.1 Development Schedule

Development Workshop Programme

Note: missions marked yellow

Version 7

13/03/2009

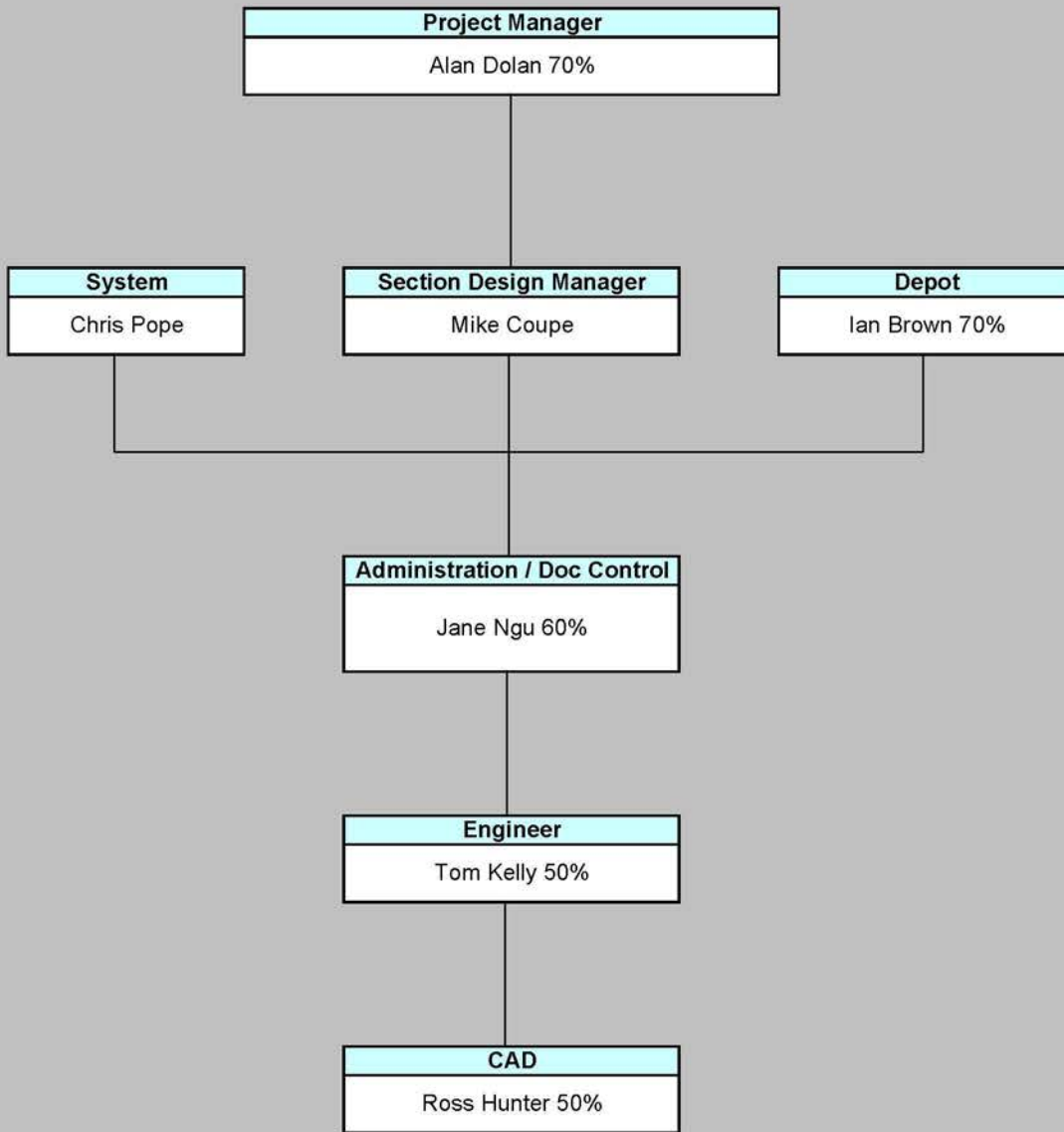
No. (Priority)	Development Workshop Title	No.	Design Package or Discipline Title	SDS Programme IFC Activity ID	DPR No.	Type	Contract Section	Date (schedule)			Development Workshop Report and its Instructions		
								BSC Internal	with SDS	with IIA	previous version Issue date	to Change Order Issue date	current version Issue date
1	Roads	Discipline Pavement											
2	Trackform	Discipline Trackform											
3	OLE	Discipline OLE Poles											
4		Discipline Pole Foundations											
5	A8 Underpass	5531 A8 Underpass - S29		SDS30780	S29	Bridge	5C						
6	Cable Ducts and Draw Pits	Discipline Cable Ducts											
7	Structures Section 5B	5525 Edinburgh Park Station Bridge - S27		B1	S27	Bridge	5B						
8	Substations	8111 Substation - Leith Sures - SS16		???	???	Substation	1A						
9		8121 Substation - Leith Walk - SS11		A549180	SS11	Substation	1B						
10		8131 Substation - Cathcart Lane - SS12		A549290	SS12	Substation	1C						
11		8211 Substation - Haymarket - SS02		A549450	SS02	Substation	2A						
12		8212 Substation - Russell Road - SS03		???	???	Substation	2A						
13		8521 Substation - Jamieson Depository (Balgownie) - SS21		???	???	Substation	5B						
14		8522 Substation - Bankhead Drive - SS22		???	???	Substation	5B						
15		8611 Substation - Oogar Depot - SS01		???	???	Substation	6						
16		8711 Substation - Tram Eastfield Road		???	???	Substation	7A						
17		Discipline Substations											
18	Roads and Tracks Sub-Section 2A incl Haymarket Viaduct	5211 Haymarket Station Viaduct - S19		51	S19	Bridge	2A		24/11/2008	28/01/2009			
19		4211 Roads, Tracks, Drainage, Street Lighting & Landscaping - Subsection 2A		SDS26510		Road	2A						
20	Roads and Tracks Sub-Section 1B	4121 Roads, tracks, drainage, Street Lighting & Landscaping - Subsection 1B		SDS25040		Road	1B		13/01/2009	18/11/2009			
21	Power Supply	Discipline Power Supply											
22		4134 Roads, Tracks, Drainage, Street Lighting & Landscaping - Subsection 1C		SDS25530		Road	1C		14/01/2009				
23		4141 Roads, Tracks, Drainage, Street Lighting & Landscaping - Subsection 1D		SDS26820		Road	1D		01/12/2008				
24	Roads, Corridors and Traffic	Discipline Corridors and Traffic											
25	Signals	Discipline Earthing & Bonding											
26	14	Depot	3811 Drainage - Subsection 6 - Depot	VO2760		Drainage	6						
27		4811 Depot Earthworks		VO2750		Road	6						
28		4812 Roads, Street Lighting & Landscaping - Subsection 6 - Depot		VO2720		Road	6						
29		6611 Depot Track - Subsection 6		VO2580		Track	6						
30		7651 Depot Hall		A27240		Train Stop	6						
31		7811 Depot OLE		VO2140		Overhead Line Equipment	6						
32		8651 Depot Building Foundations		SDS98990		Building	6						
33		8652 Depot Ductwork - External Services		A45810		Building	6						
34		8653 Depot General Layout		SDS86660		Building	6						
35		8654 Depot Shed		SDS86220		Building	6						
36		8655 Depot Street Ground Floor Slab & Pits		SDS87020		Building	6						
37		8656 Depot Building Steel Superstructure		SDS86090		Building	6						
38	Traffic Lights	Discipline Traffic Lights											
39	Roads and Tracks Sub-Section 5B and 5C incl Carrick Knowe and South Cycle Access Bridge	4521 Roads, Tracks, Drainage, Street Lighting & Landscaping - Subsection 5B		SDS39940		Road	5B						
40		4531 Roads, Tracks, Drainage, Street Lighting & Landscaping - Subsection 5C		SDS30430		Road	5C						
41		5521 Carrick Knowe Underbridge - S23		267	S23	Bridge	5B						
42		5524 South Cycle Access Bridge - S26		SDS36240	S26	Bridge	5B						
43	Roads Sub-Section 7A	4711 Roads, Tracks, Drainage, Street Lighting & Landscaping - Subsection 7A		SDS30920		Road	7A						
44		1710 Speciosa Mitigator plan		SDS87750		Other	7A						

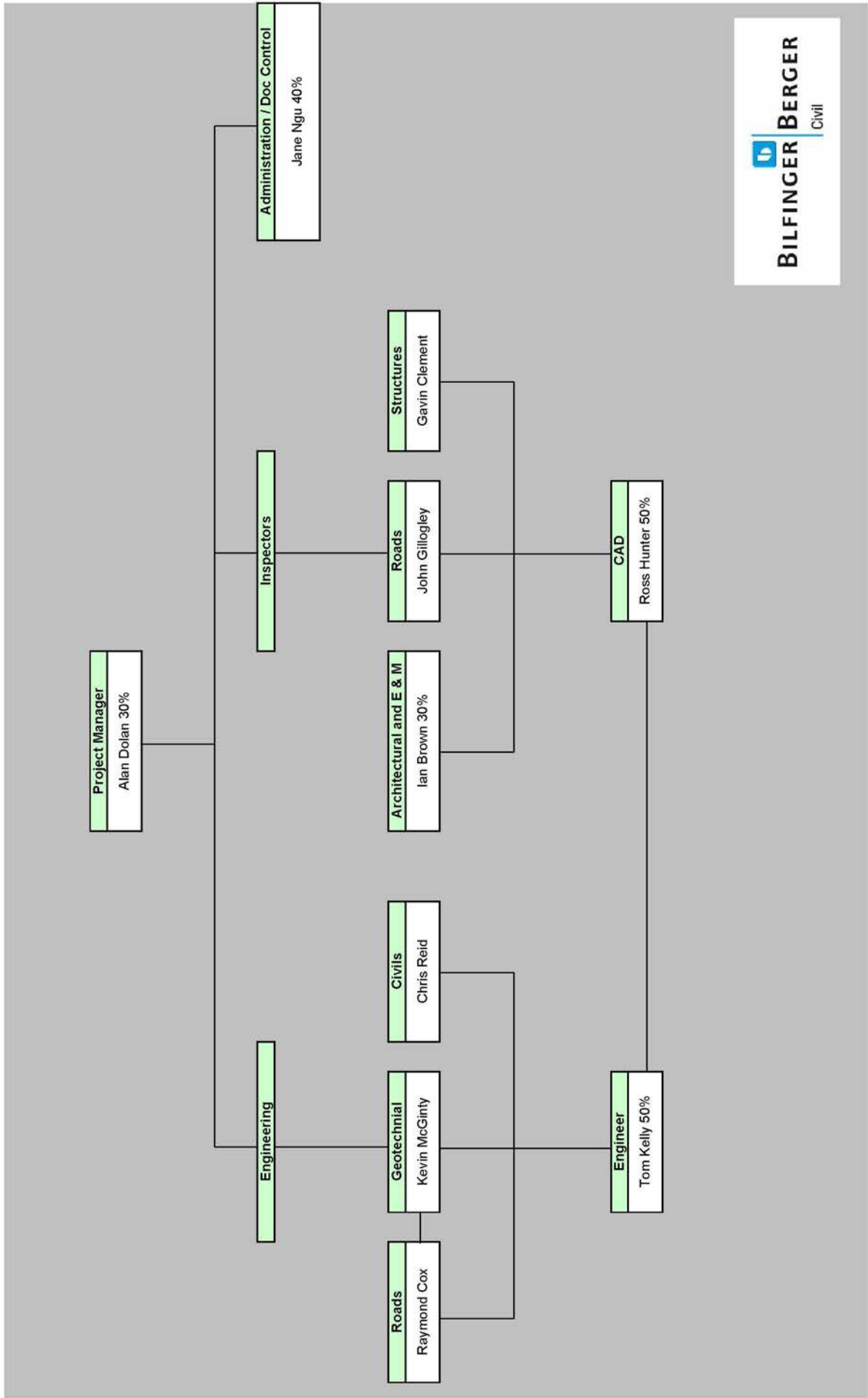
No. (Priority)	Title	Development Workshop		Design Package or Discipline		SOS Programme #C Activity ID	DP No.	Type	Contract Section	Date (schedule)		Development Workshop Report and its Instructions		
		No.	Title	No.	Title					with SDS	with the	Previous version Issue date	Current version Issue date	
46	Structures Section 7A and Depot Access Bridge and Cycle Stop Retaining Wall	19.0	Balgonie Magdalenian Plan	SDS57240	W14	431	W14	Retaining Wall	7A	1307/2009				
47		5613	Gogar Burn Retaining Wall One - W14			461	W15	Retaining Wall	7A					
48		5614	Gogar Burn Retaining Wall Two - W15			SDS56610	S29	Bridge	7A					
49		5611	Gogar Burn Retaining Wall - S29			341	S30	Bridge	7A					
50		5612	Gogar Burn Culvert One - S30			371	S31	Bridge	7A					
51		5613	Gogar Burn Culvert Two - S31			401	S34	Bridge	7A					
52		5614	Gogar Burn Culvert Three - S34			SDS57660	S32	Bridge	5C					
53		5615	Depot Access Bridge - S32			SDS66500	W19	Retaining Wall	5C					
54		4511	Cycle Stop Retaining Wall - W19	Roads, Tracks, Drainage, Street Lighting & Landscaping - Subsection 5A	SDS24450			Road	5A		2907/2009			
55		5612	Russell Road Bridge - S20			SDS62440	S20	Bridge	2A					
56		5601	Russell Road Retaining Wall - W3			185	W3	Retaining Wall	5A					
57		5602	Russell Road Retaining Wall 2 - W4			SDS62400	W4	Retaining Wall	5A					
58		5511	Roseburn Street Viaduct - S27A			SDS59000	S27A	Bridge	5A					
59		5612	Murrayfield Station Underpass - S27C			SDS58720	S27C	Bridge	5A					
60		5513	Water of Leith Bridge - S27E			SDS59250	S27E	Bridge	5A					
61		5614	Balgreen Road Tram Bridge - S22			SDS39970	S22	Bridge	5A					
62		5615	Balgreen Road Network Rail Access Bridge - S22			SDS83300	S22	Bridge	5A					
63		5604	Balgreen Road Retaining Wall - W8			SDS35660	W8	Retaining Wall	5A					
64	5605	Murrayfield Station Retaining Wall - S27B			SDS51370	W8	Retaining Wall	5A						
65	5606	Murrayfield Trainstop Retaining Wall - W19			SDS51190	S27B	Retaining Wall	5A						
66	5607	Murrayfield Training Pitches Retaining Wall - S27D			SDS51560	W18	Retaining Wall	5A						
67	5608	Barrhead Drive Retaining Wall - W11			SDS66440	S27D	Retaining Wall	5A						
68	4111	Roads, Tracks, Drainage, Street Lighting & Landscaping - Subsection 1A1 - Bernard St to Foot of Walk			SDS57950	W11	Retaining Wall	5B		0503/2009				
69	4112	Roads, Tracks, Drainage, Street Lighting & Landscaping - Subsection 1A2 - Port of Leith to Bernard Street			SDS24540		Road	1A						
70	4113	Roads, Tracks, Drainage, Street Lighting & Landscaping - Subsection 1A3 - Ocean Terminal to Port of Leith			SDS7810		Road	1A						
71	4114	Roads, Tracks, Drainage, Street Lighting & Landscaping - Subsection 1A4 - Newhaven to Ocean Terminal			SDS78940		Road	1A						
72	5111	Victoria Dock Entrance Bridge - S18			SDS78620		Road	1A						
73	5112	Tower Place Bridge - S17			SDS62420	S18	Bridge	1A						
74	5151	Lynsay Road Retaining Wall - W1			SDS62430	S17	Bridge	1A						
75	7151	Train Stop - Newhaven			A7610	W1	Retaining Wall	1A						
76	7152	Train Stop - Ocean Terminal			A25890		Train Stop	1A						
77	7153	Train Stop - Port of Leith			A25890		Train Stop	1A						
78	7154	Train Stop - Bernard Street			A25630		Train Stop	1A						
79	7155	Train Stop - Foot of the Walk			A25810		Train Stop	1A						
80	7161	Train Stop - Balfour Street			A25650		Train Stop	1A						
81	7171	Train Stop - McDonald Road			A25920		Train Stop	1B						
82	7172	Train Stop - Picaury Place			A26040		Train Stop	1C						
83	7173	Train Stop - St Andrew's Square			A26070		Train Stop	1C						
84	7174	Train Stop - Picaury Street			A26100		Train Stop	1C						
85	7181	Train Stop - Sharnbrook Place			A26070		Train Stop	1D						
86	7251	Train Stop - Haymarket			A26130		Train Stop	2A						
87	7551	Train Stop - Murrayfield Station			A26680		Train Stop	5A						
88	7551	Train Stop - Balgreen			A26760		Train Stop	5B						

Development Workshop		Design Package or Discipline		SOS Programme IFC Activity ID	DP No.	Type	Contract Section	Date (schedule)		Development Workshop Report and its Instructions		
No. (Priority)	Title	No.	Title					BSC Internal	with SDS	with the	previous version issue date	to Change Order issue date
96		7562	Tram Stop - Saughton	A278543		Tram Stop	5B					
97		7563	Tram Stop - Bankhead	A278620		Tram Stop	5B					
98		7564	Tram Stop - Edinburgh Park Central	A277000		Tram Stop	5B					
99		7565	Tram Stop - Edinburgh Park Central	A270889		Tram Stop	5B					
100		7571	Tram Stop - Cyle Centre	A271810		Tram Stop	5C					
101		7572	Tram Stop - Gogarburn	A273220		Tram Stop	5C					
102		7751	Tram Stop - Ingliston Park & Rice	A277710		Tram Stop	7A					
103		7752	Tram Stop - Edinburgh Airport	A278909		Tram Stop	7A					
96	22	Discipline: Earthworks					SW	1003/2009	(13/03/2009)			
99	n.a.	4311	Rouss, Tracks, Drainage, Street Lighting & Landscaping - Substation 3A	SDS27000		Road	3A					
100	n.a.	4321	Rouss, Tracks, Drainage, Street Lighting & Landscaping - Substation 3B	SDS27490		Road	3B					
101	n.a.	4331	Rouss, Track, Drainage, Street Lighting & Landscaping - Substation 3C	SDS27960		Road	3C					
102	n.a.	5311	Roseburn Terrace Bridge - S01	SDS62410		Bridge	3A					
103	n.a.	5312	Collegiate Viaduct - S02	AS540		Bridge	3A					
104	n.a.	5313	St. George's School Access Bridge - S03	A9730		Bridge	3A					
105	n.a.	5314	St George's School Footbridge - S04	A9870		Bridge	3A					
106	n.a.	5315	Revelation Dykes Bridge - S05	A9100		Bridge	3A					
107	n.a.	5316	Craigleith Drive Bridge - S06	A9290		Bridge	3A					
108	n.a.	5317	Hokley Inn Access Bridge - S07	A9880		Bridge	3A					
109	n.a.	5318	Queensberry Road Bridge - S08	A9490		Bridge	3A					
110	n.a.	5319	Connaught Road South Bridge - S09	A9870		Bridge	3A					
111	n.a.	5320	Talbot Road Bridge - S10	A9860		Bridge	3A					
112	n.a.	5322	Grewe Road Gardens Bridge - S12	A10240		Bridge	3B					
113	n.a.	5352	Roseburn Corridor Retaining Structure A - W100	968		Retaining Wall	3A					
114	n.a.	5353	Roseburn Corridor Retaining Structure B - W100	991		Retaining Wall	3A					
115	n.a.	5354	Roseburn Corridor Retaining Structure C - W100	1018		Retaining Wall	3A					
116	n.a.	5355	Roseburn Corridor Retaining Structure D - W100	1041		Retaining Wall	3A					
117	n.a.	5356	Roseburn Corridor Retaining Structure E - W100	1068		Retaining Wall	3A					
118	n.a.	5357	Roseburn Corridor Retaining Structure F - W100	1091		Retaining Wall	3A					
119	n.a.	5358	Roseburn Corridor Retaining Structure G - W100	1116		Retaining Wall	3A					
120	n.a.	5359	Roseburn Corridor Retaining Structure H - W100	1141		Retaining Wall	3A					
121	n.a.	7391	Tram Stop - Roseburn	A28180		Tram Stop	3A					
122	n.a.	7392	Tram Stop - Roseburn	A28180		Tram Stop	3A					
123	n.a.	7393	Tram Stop - Craigleith	A28220		Tram Stop	3A					
124	n.a.	7594	Tram Stop - Talbot Road	A28250		Tram Stop	3A					
125	n.a.	7395	Tram Stop - Crewe Toll for Western General Hospital	A28260		Tram Stop	3A					
126	n.a.	7391	Tram Stop - West Pilton	A28310		Tram Stop	3B					
127	n.a.	7392	Tram Stop - Carleton Park	A28360		Tram Stop	3B					
128	n.a.	7371	Tram Stop - Salkins Square	A28440		Tram Stop	3C					
129	n.a.	7372	Tram Stop - Granton	A28520		Tram Stop	3C					
130	n.a.	8311	Substation - Craigleith - SS13	???		Substation	3A					
131	n.a.	8321	Substation - Granton Main East - SS14	???		Substation	3B					
132	n.a.	8331	Substation - Granton Road - SS15	???		Substation	3C					

Bilfinger Berger – Siemens – CAF Consortium

10.9.2 Proposed Staffing Chart (Construction Support)





Bilfinger Berger – Siemens – CAF Consortium

10.10 Issues and Concerns

Not Applicable