

Activity ID	Activity Name	Original Duration	Start	Finish	Duration % Complete	Rev 5c Start	Rev 5c Finish	2012												
								Jan	Feb	Mar	Apr	May	Jun	Jul	Aug	Sep	Oct	Nov	Dec	
Programme following Mediation 8-12 March 2011 rev 5c 120621 On Street Progress t																				
<b>KEY DATES</b>																				
1060	Sign MOV for carrying out the Prioritised Works	0	31-Mar-11 A	11-May-14	49.51%	31-Mar-11	04-Feb-14													
1070	Re - mobilisation - Prioritised Works	10	15-Apr-11 A	03-May-11 A	100%	15-Apr-11	03-May-11													
1050	Re - mobilisation	13	01-Aug-11 A	02-Sep-11 A	100%	14-Sep-11	03-Oct-11													
1000	Sign MOV in Respect of Off Street Works (Other than Prioritised Works) and the On Street Works	0		15-Sep-11 A	100%		14-Sep-11													
291	Construction Completion Edinburgh Airport to York Place	0		12-Nov-13	0%		08-Aug-13													
345	Section Completion C	0		10-Feb-14	0%		06-Nov-13													
310	Commencement of Revenue Service Phase 1a Edinburgh Airport to York Place	0		11-May-14	0%		04-Feb-14													
335	Section Completion D	0		11-May-14	0%		04-Feb-14													
<b>COMMISSIONING PHASE AIRPORT TO YORK PLACE</b>																				
320	System Integration Test; Airport to York Place	30	12-Nov-13	12-Dec-13	0%	08-Aug-13	07-Sep-13													
311	Test Running and Driver Familiarisation; Airport to York Place	30	12-Dec-13	11-Jan-14	0%	07-Sep-13	07-Oct-13													
342	T1 Post Commissioning Test completed; Airport to York Place	0		11-Jan-14	0%		07-Oct-13													
302.11	Test Running and Driver familiarisation performance ramp up Airport to York Place	30	11-Jan-14	10-Feb-14	0%	07-Oct-13	06-Nov-13													
302.12	T2 Performance Test completed; Airport to York Pla	0		10-Feb-14	0%		06-Nov-13													
302.13	Approval of HMRI; Airport to York Place	0		10-Feb-14	0%		06-Nov-13													
302.14	Shadow running: Airport to York Place	90	10-Feb-14	11-May-14	0%	06-Nov-13	04-Feb-14													
302.15	T3 Pre-Operations Test Completed; Airport to York Place	0		11-May-14	0%		04-Feb-14													
<b>TRACK FINISHES</b>																				
A20050	On Street Finishing	10	30-Jul-13	14-Aug-13	0%	24-Apr-13	08-May-13													
A20040	On Street Grinding	10	14-Aug-13	28-Aug-13	0%	09-May-13	22-May-13													
<b>TESTING</b>																				
1C-15/16-1210	On Street Geo - technical testing	3	03-May-11 A	02-Sep-11 A	100%	03-May-11	03-Oct-11													
<b>SECTION 01 NEWHAVEN ROAD TO HAYMARKET</b>																				
<b>01C McDonald Road (inc.) to Princess Street West (exc.)</b>																				
<b>MUDFA &amp; Utilities Completions</b>																				
1C-16-A16830	St Andrews Square	0		14-Feb-12 A	100%		31-Aug-11													
1C-16-A16840	St Andrews Square to Princes Street West	0		27-Apr-12 A	100%		31-Aug-11													
1C-17-A16820	Picardy Place to St Andrews Square	0		15-Oct-12*	0%		31-Aug-11													
<b>E &amp; M Installations</b>																				
<b>Communications</b>																				
1C-16/17-TELC-60	Install Fibre Optic Cables PPL - SAS - PST	6	24-May-13	04-Jun-13	0%	14-Feb-13	21-Feb-13													
1C-17/18-TELC-60	Install Fibre Optic Cables MDR - PPL - SAS	6	04-Jun-13	12-Jun-13	0%	22-Feb-13	01-Mar-13													
<b>Signalling</b>																				
1C-16-SGNW-60	Install Signalling Wayside Equipment SAS - PST	6	06-Nov-12	14-Nov-12	0%	22-Jun-12	29-Jun-12													
1C-17-SGNW-60	Install Signalling Wayside Equipment PPL - SAS	6	24-May-13	04-Jun-13	0%	14-Feb-13	21-Feb-13													
1C-17-SIGN-40	Installation of SIG-interlocking cubicle York Place	15	10-Jun-13	01-Jul-13	0%	28-Feb-13	20-Mar-13													
1C-17-SIGN-90	installation of SIG equipment on crossover York Pla	5	24-Jun-13	01-Jul-13	0%	14-Mar-13	20-Mar-13													

Date	Revision	Checked	Approved	Date	Revision	Checked	Approved
02-Feb...	Revision 0	SCS/M...	BSC	28-Jun-11	Revision 3a	SCS/MHE	BSC
16-Feb...	Revision 1	SCS/M...	BSC	08-Sep-11	Revision 4	SCS	BSC
18-Feb...	Revision 2	SCS/M...	BSC	16-Feb-12	Revision 4c	SCS	BBS
06-Ma...	Revision 3	SCS/M...	BSC	21-Jun-12	Revision 5c	SCS	BBS
				25-Oct-12	Rev. 5c Progressed to 121013	SCS	BBS

█ Remaining Level of Effort     █ Critical Remaining Work  
█ Changed Works     ◆ Rev 5c Milestone  
█ Revision 5c     ◆ Milestone  
 Actual Work     ◆ Changed Works  
█ Remaining Work     ▶ Summary



# EDINBURGH TRAM NETWORK

Activity ID	Activity Name	Original Duration	Start	Finish	Duration % Complete	Rev 5c Start	Rev 5c Finish	2012														
								Jan	Feb	Mar	Apr	May	Jun	Jul	Aug	Sep	Oct	Nov	Dec			
1C-17-SIGN-80	Commissioning of SIG -interlocking cubicle York Pla	5	01-Jul-13	08-Jul-13	0%	21-Mar-13	27-Mar-13															
<b>Testing &amp; Commissioning</b>		0			0%																	
<b>OLE &amp; TPS</b>		62	14-May-13	08-Aug-13	0%	03-Sep-12	30-Apr-13															
1C-15/16-OHLE-50	Installation of poles and building fixings -9 (12 1376 - 13 0120)	4	14-May-13	20-May-13	0%	03-Sep-12	06-Sep-12															
1C-15/16-OHLE-60	Overhead Catenary Line -9 (12 1376 - 13 0120)	12	20-May-13	06-Jun-13	0%	07-Sep-12	24-Sep-12															
1C-16/17-OHLE-50	Installation of poles and building fixings -8 (12 0890 - 12 01429)	5	18-Jul-13	25-Jul-13	0%	10-Apr-13	16-Apr-13															
1C-17/18/19-OHLE-50	Installation of poles and building fixings - part 7	3	18-Jul-13	23-Jul-13	0%	10-Apr-13	12-Apr-13															
1C-17/18/19-OHLE-60	Overhead Catenary Line -7 ( part 11 0825 - 12 0960 + 12 0720 - 12 0804)	6	23-Jul-13	31-Jul-13	0%	15-Apr-13	22-Apr-13															
1C-16/17-OHLE-60	Overhead Catenary Line -8 (12 0890 - 12 01429)	10	25-Jul-13	08-Aug-13	0%	17-Apr-13	30-Apr-13															
<b>Access</b>		199	15-Oct-12	18-Jul-13	0%	22-May-12	10-Apr-13															
1C-16-ELEC-30	Access for visual inspection to cable pits for cable laying SAS - PST	0	15-Oct-12		0%	22-May-12																
1C-16-ELEC-31	Access to cable pits for cable laying SAS - PST	0	06-Nov-12		0%	22-Jun-12																
1C-16-OHLE-30	Access for visual inspection for E&M wayside installation SAS - PST	0	12-Apr-13		0%	02-Aug-12																
1C-17-ELEC-30	Access for visual inspection to cable pits for cable laying PPL - SAS	0	24-Apr-13		0%	15-Jan-13																
1C-16-OHLE-31	Access for E&M wayside installation SAS - PST	0	14-May-13		0%	03-Sep-12																
1C-17-ELEC-31	Access to cable pits for cable laying PPL - SAS	0	24-May-13		0%	14-Feb-13																
1C-17-OHLE-30	Access for visual inspection for E&M wayside installation PPL - SAS	0	19-Jun-13		0%	08-Mar-13																
1C-17-OHLE-31	Access for E&M wayside installation PPL - SAS	0	18-Jul-13		0%	10-Apr-13																
<b>Picardy Place (inc.) to St. Andrews Square (exc.)</b>		333	09-May-12 A	03-Oct-13	33.76%	29-Jul-11	02-Jul-13															
<b>Design</b>		0	09-May-12 A	25-May-12 A	0%	29-Jul-11	27-Sep-11															
1C-17-SUBS-20	IFC Drawings Cathedral Sub Station	0		09-May-12 A	100%		27-Sep-11															
1C-17-TRCK-10	IFC Drawings Roads, Street Lighting, Landscaping 1C2	0		25-May-12 A	100%		29-Jul-11															
<b>Road &amp; Trackworks</b>		166	28-Nov-12	18-Jul-13	0%	03-Aug-12	09-Apr-13															
<b>York Place Ch 680 to 1027</b>		166	28-Nov-12	18-Jul-13	0%	03-Aug-12	09-Apr-13															
<b>Constraints / Procedures / Documentation / Approvals</b>		16	28-Nov-12	20-Dec-12	0%	03-Aug-12	27-Aug-12															
1C-17-YP-60	Prepare Method Statements & Risk Assessment	0	28-Nov-12		0%	03-Aug-12																
1C-17-YP-70	Stakeholder Notifications (including Traffic Management)	0	28-Nov-12		0%	03-Aug-12																
1C-17-YP-80	Apply for 3rd Party Licence	0	28-Nov-12		0%	03-Aug-12																
1C-17-YP-100	Request TTRO's	0	13-Dec-12		0%	20-Aug-12																
1C-17-YP-90	Request Permit to Commence Work	0	20-Dec-12		0%	27-Aug-12																
<b>Phase 1 inbound Ch 680 to 960</b>		98	10-Jan-13	28-May-13	0%	03-Sep-12	14-Feb-13															
<b>Traffic Management &amp; Site Establishment</b>		17	10-Jan-13	04-Feb-13	0%	03-Sep-12	25-Sep-12															
1C-17-YP1-179	York Place TM enabling Works	5	10-Jan-13	17-Jan-13	0%	03-Sep-12	07-Sep-12															
1C-17-YP1-272	Erect Pedestrian Barrier	1	17-Jan-13	18-Jan-13	0%	10-Sep-12	10-Sep-12															
1C-17-YP1-203	Site Compound & Site Clearance	12	17-Jan-13	04-Feb-13	0%	10-Sep-12	25-Sep-12															
1C-17-YP1-264	Investigate services / outfall positions / inlet-outlet positions / levels	4	18-Jan-13	24-Jan-13	0%	11-Sep-12	14-Sep-12															
<b>Excavation &amp; Track Construction</b>		52	18-Jan-13	02-Apr-13	0%	11-Sep-12	20-Nov-12															
<b>Track Laying</b>		15	12-Mar-13	02-Apr-13	0%	01-Nov-12	20-Nov-12															

Date	Revision	Checked	Approved	Date	Revision	Checked	Approved
02-Feb...	Revision 0	SCS/M...	BSC	28-Jun-11	Revision 3a	SCS/MHE	BSC
16-Feb...	Revision 1	SCS/M...	BSC	08-Sep-11	Revision 4	SCS	BSC
18-Feb...	Revision 2	SCS/M...	BSC	16-Feb-12	Revision 4c	SCS	BBS
06-Ma...	Revision 3	SCS/M...	BSC	21-Jun-12	Revision 5c	SCS	BBS
				25-Oct-12	Rev. 5c Progressed to 121013	SCS	BBS

- Remaining Level of Effort
- Critical Remaining Work
- Changed Works
- Rev 5c Milestone
- Revision 5c
- Milestone
- Actual Work
- Changed Works
- Remaining Work
- Summary



# EDINBURGH TRAM NETWORK

Activity ID	Activity Name	Original Duration	Start	Finish	Duration % Complete	Rev 5c Start	Rev 5c Finish	2012														
								Jan	Feb	Mar	Apr	May	Jun	Jul	Aug	Sep	Oct	Nov	Dec			
1C-17-YP1-214	Access for Track Laying	0	12-Mar-13		0%	01-Nov-12																
1C-17-YP1-235	Installation of Noise & Vibration Mat (if reqd)	0	12-Mar-13		0%	01-Nov-12																
1C-17-TRCK-90	Set track (1x280m)(sleepers/rail)	13	12-Mar-13	01-Apr-13	0%	01-Nov-12	19-Nov-12															
1C-17-YP1-297	Welding & Grinding	11	13-Mar-13	28-Mar-13	0%	02-Nov-12	16-Nov-12															
1C-17-YP1-308	Drainage / Rail Connections	11	14-Mar-13	01-Apr-13	0%	05-Nov-12	19-Nov-12															
1C-17-YP1-289	Installation of IMU Boxes and Loops	11	14-Mar-13	01-Apr-13	0%	05-Nov-12	19-Nov-12															
1C-17-YP1-440	Final Rail Alignment - Check and Approve	11	14-Mar-13	01-Apr-13	0%	05-Nov-12	19-Nov-12															
1C-17-YP1-261	230mm Concrete Supporting Layer (+ cure lag)	11	15-Mar-13	02-Apr-13	0%	06-Nov-12	20-Nov-12															
<b>OLE Foundations</b>		<b>6</b>	<b>07-Feb-13</b>	<b>15-Feb-13</b>	<b>0%</b>	<b>01-Oct-12</b>	<b>08-Oct-12</b>															
1C-17-YP1-174	Core/Cast OLE Pole Foundations	6	07-Feb-13	15-Feb-13	0%	01-Oct-12	08-Oct-12															
<b>Trackform</b>		<b>15</b>	<b>15-Feb-13</b>	<b>08-Mar-13</b>	<b>0%</b>	<b>09-Oct-12</b>	<b>29-Oct-12</b>															
1C-17-YP1-221	Carry out inspection and testing of Subgrade	1	15-Feb-13	18-Feb-13	0%	09-Oct-12	09-Oct-12															
1C-17-YP1-222	Blinding Concrete	4	18-Feb-13	22-Feb-13	0%	10-Oct-12	15-Oct-12															
1C-17-YP1-233	Place RC Improvement Slab (+ cure lag)	10	22-Feb-13	08-Mar-13	0%	16-Oct-12	29-Oct-12															
<b>Excavation</b>		<b>16</b>	<b>18-Jan-13</b>	<b>11-Feb-13</b>	<b>0%</b>	<b>11-Sep-12</b>	<b>02-Oct-12</b>															
1C-17-YP1-206	Plane Main Carriageway 250mm	6	18-Jan-13	28-Jan-13	0%	11-Sep-12	18-Sep-12															
1C-17-YP1-225	Excavate to Formation for Carriageway and Track (incl for Capping/Type 1)	8	28-Jan-13	07-Feb-13	0%	19-Sep-12	28-Sep-12															
1C-17-YP1-216	Remove existing kerbs to store.	8	28-Jan-13	07-Feb-13	0%	19-Sep-12	28-Sep-12															
1C-17-YP1-287	Check suitability of formation (ongoing)	0	28-Jan-13		0%	19-Sep-12																
1C-17-YP1-298	Capping Layer to Adjacent Carriageway (600mm)	8	28-Jan-13	07-Feb-13	0%	19-Sep-12	28-Sep-12															
1C-17-YP1-279	Make good Formation with Type 1 (Ave 220mm)	4	05-Feb-13	11-Feb-13	0%	27-Sep-12	02-Oct-12															
<b>Drainage &amp; Ducts</b>		<b>57</b>	<b>24-Jan-13</b>	<b>15-Apr-13</b>	<b>0%</b>	<b>17-Sep-12</b>	<b>04-Jan-13</b>															
<b>Drains</b>		<b>24</b>	<b>24-Jan-13</b>	<b>27-Feb-13</b>	<b>0%</b>	<b>17-Sep-12</b>	<b>18-Oct-12</b>															
1C-17-YP1-318	Outfall Connections	6	24-Jan-13	01-Feb-13	0%	17-Sep-12	24-Sep-12															
1C-17-YP1-209	Drainage to Discharge Points	22	28-Jan-13	27-Feb-13	0%	19-Sep-12	18-Oct-12															
<b>Ducts</b>		<b>47</b>	<b>07-Feb-13</b>	<b>15-Apr-13</b>	<b>0%</b>	<b>01-Oct-12</b>	<b>04-Jan-13</b>															
1C-17-YP1-450	Traction Ducts & Chambers	0	07-Feb-13		0%	01-Oct-12																
1C-17-YP1-231	Comms Ducts & Chambers	18	07-Feb-13	05-Mar-13	0%	01-Oct-12	24-Oct-12															
1C-17-YP1-430	Installation of IMU Drains and Cable Ducting	4	11-Feb-13	15-Feb-13	0%	03-Oct-12	08-Oct-12															
1C-17-YP1-232	Traffic Signal Ducts	12	27-Feb-13	15-Mar-13	0%	19-Oct-12	05-Nov-12															
1C-17-YP1-243	Lighting Ducts	32	27-Feb-13	15-Apr-13	0%	19-Oct-12	04-Jan-13															
<b>Pavement Construction over tracks</b>		<b>18</b>	<b>02-Apr-13</b>	<b>26-Apr-13</b>	<b>0%</b>	<b>21-Nov-12</b>	<b>17-Jan-13</b>															
1C-17-YP1-274	Concrete Upstands	11	02-Apr-13	17-Apr-13	0%	21-Nov-12	08-Jan-13															
1C-17-YP1-255	Lay Setts	9	05-Apr-13	18-Apr-13	0%	26-Nov-12	09-Jan-13															
1C-17-YP1-276	Sealant to Rail Joints	6	18-Apr-13	26-Apr-13	0%	10-Jan-13	17-Jan-13															
<b>Carriageway Construction</b>		<b>78</b>	<b>07-Feb-13</b>	<b>28-May-13</b>	<b>0%</b>	<b>01-Oct-12</b>	<b>14-Feb-13</b>															
1C-17-YP1-218	Sub-base 220mm all carriageway areas (bituminous and setts)	6	07-Feb-13	15-Feb-13	0%	01-Oct-12	08-Oct-12															
1C-17-YP1-219	Kerbing	20	02-Apr-13	30-Apr-13	0%	21-Nov-12	21-Jan-13															
1C-17-YP1-460	Gullies	10	17-Apr-13	01-May-13	0%	09-Jan-13	22-Jan-13															
1C-17-YP1-242	Sub-base shape all carriageway areas	2	29-Apr-13	01-May-13	0%	21-Jan-13	22-Jan-13															
1C-17-YP1-224	Footpath Works	18	30-Apr-13	28-May-13	0%	22-Jan-13	14-Feb-13															
1C-17-YP1-256	225mm Base	4	07-May-13	13-May-13	0%	28-Jan-13	31-Jan-13															
1C-17-YP1-207	60mm Binder	2	13-May-13	15-May-13	0%	01-Feb-13	04-Feb-13															
1C-17-YP1-228	35mm Wearing Course	2	15-May-13	17-May-13	0%	05-Feb-13	06-Feb-13															
<b>Finishes</b>		<b>36</b>	<b>04-Apr-13</b>	<b>24-May-13</b>	<b>0%</b>	<b>23-Nov-12</b>	<b>13-Feb-13</b>															

Date	Revision	Checked	Approved	Date	Revision	Checked	Approved
02-Feb...	Revision 0	SCS/M...	BSC	28-Jun-11	Revision 3a	SCS/MHE	BSC
16-Feb...	Revision 1	SCS/M...	BSC	08-Sep-11	Revision 4	SCS	BSC
18-Feb...	Revision 2	SCS/M...	BSC	16-Feb-12	Revision 4c	SCS	BBS
06-Ma...	Revision 3	SCS/M...	BSC	21-Jun-12	Revision 5c	SCS	BBS
				25-Oct-12	Rev. 5c Progressed to 121013	SCS	BBS

- Remaining Level of Effort
- Changed Works
- Revision 5c
- Actual Work
- Remaining Work
- Critical Remaining Work
- Rev 5c Milestone
- Milestone
- Changed Works
- Summary



# EDINBURGH TRAM NETWORK



Activity ID	Activity Name	Original Duration	Start	Finish	Duration % Complete	Rev 5c Start	Rev 5c Finish	2012														
								Jan	Feb	Mar	Apr	May	Jun	Jul	Aug	Sep	Oct	Nov	Dec			
1C-17-YP1-241	Signs / Street Furniture	10	04-Apr-13	18-Apr-13	0%	23-Nov-12	09-Jan-13															
1C-17-YP1-238	Sealant against concrete upstand	6	16-May-13	24-May-13	0%	06-Feb-13	13-Feb-13															
<b>Traffic Lights</b>		<b>9</b>	<b>30-Apr-13</b>	<b>13-May-13</b>	<b>0%</b>	<b>22-Jan-13</b>	<b>31-Jan-13</b>															
1C-17-YP1-273	Traffic Signals	8	30-Apr-13	13-May-13	0%	22-Jan-13	31-Jan-13															
<b>Phase 3 inbound Ch 960 to 1027, outbound Ch 680 to 820 &amp; Ch 865 to 1061</b>		<b>109</b>	<b>15-Feb-13</b>	<b>18-Jul-13</b>	<b>0%</b>	<b>09-Oct-12</b>	<b>09-Apr-13</b>															
<b>Phase 3.1 outbound Ch 865 to 1061</b>		<b>86</b>	<b>15-Feb-13</b>	<b>17-Jun-13</b>	<b>0%</b>	<b>09-Oct-12</b>	<b>06-Mar-13</b>															
<b>Excavation &amp; Track Construction</b>		<b>39</b>	<b>15-Feb-13</b>	<b>11-Apr-13</b>	<b>0%</b>	<b>09-Oct-12</b>	<b>02-Jan-13</b>															
<b>Excavation</b>		<b>10</b>	<b>15-Feb-13</b>	<b>01-Mar-13</b>	<b>0%</b>	<b>09-Oct-12</b>	<b>22-Oct-12</b>															
1C-17-YP3.1-256	Plane Main Carriageway 250mm	3	15-Feb-13	20-Feb-13	0%	09-Oct-12	11-Oct-12															
1C-17-YP3.1-315	Excavate to Formation for Carriageway and Track (incl for Capping/Type 1)	5	20-Feb-13	27-Feb-13	0%	12-Oct-12	18-Oct-12															
1C-17-YP3.1-326	Remove existing kerbs to store.	5	20-Feb-13	27-Feb-13	0%	12-Oct-12	18-Oct-12															
1C-17-YP3.1-347	Check suitability of formation (ongoing)	0	20-Feb-13		0%	12-Oct-12																
1C-17-YP3.1-388	Capping Layer to Adjacent Carriageway (600mm)	5	20-Feb-13	27-Feb-13	0%	12-Oct-12	18-Oct-12															
1C-17-YP3.1-339	Make good Formation with Type 1 (Ave 220mm)	3	26-Feb-13	01-Mar-13	0%	18-Oct-12	22-Oct-12															
<b>OLE Foundations</b>		<b>2</b>	<b>27-Feb-13</b>	<b>01-Mar-13</b>	<b>0%</b>	<b>19-Oct-12</b>	<b>22-Oct-12</b>															
1C-17-YP3.1-184	Core/Cast OLE Pole Foundations	2	27-Feb-13	01-Mar-13	0%	19-Oct-12	22-Oct-12															
<b>Trackform</b>		<b>9</b>	<b>05-Mar-13</b>	<b>18-Mar-13</b>	<b>0%</b>	<b>25-Oct-12</b>	<b>06-Nov-12</b>															
1C-17-YP3.1-341	Carry out inspection and testing of Subgrade	1	05-Mar-13	06-Mar-13	0%	25-Oct-12	25-Oct-12															
1C-17-YP3.1-332	Blinding Concrete	2	06-Mar-13	08-Mar-13	0%	26-Oct-12	29-Oct-12															
1C-17-YP3.1-323	Place RC Improvement Slab (+ cure lag)	6	08-Mar-13	18-Mar-13	0%	30-Oct-12	06-Nov-12															
<b>Track Laying</b>		<b>18</b>	<b>18-Mar-13</b>	<b>11-Apr-13</b>	<b>0%</b>	<b>07-Nov-12</b>	<b>02-Jan-13</b>															
1C-17-YP3.1-325	Installation of Noise & Vibration Mat (Ch 935 to 109)	6	18-Mar-13	26-Mar-13	0%	07-Nov-12	14-Nov-12															
1C-17-YP3.1-264	Access for Track Laying	0	28-Mar-13		0%	19-Nov-12																
1C-17-TRCK-130	Set track (1x196m)(sleepers/rail)	8	28-Mar-13	10-Apr-13	0%	19-Nov-12	28-Nov-12															
1C-17-YP3.1-357	Welding & Grinding	6	01-Apr-13	09-Apr-13	0%	20-Nov-12	27-Nov-12															
1C-17-YP3.1-398	Drainage / Rail Connections	6	02-Apr-13	10-Apr-13	0%	21-Nov-12	28-Nov-12															
1C-17-YP3.1-349	Installation of IMU Boxes and Loops	6	02-Apr-13	10-Apr-13	0%	21-Nov-12	28-Nov-12															
1C-17-YP3.1-560	Final Rail Alignment - Check and Approve	6	02-Apr-13	10-Apr-13	0%	21-Nov-12	28-Nov-12															
1C-17-YP3.1-351	230mm Concrete Supporting Layer (+ cure lag)	6	03-Apr-13	11-Apr-13	0%	22-Nov-12	02-Jan-13															
<b>Drainage &amp; Ducts</b>		<b>39</b>	<b>15-Feb-13</b>	<b>11-Apr-13</b>	<b>0%</b>	<b>09-Oct-12</b>	<b>02-Jan-13</b>															
<b>Ducts</b>		<b>31</b>	<b>27-Feb-13</b>	<b>11-Apr-13</b>	<b>0%</b>	<b>19-Oct-12</b>	<b>02-Jan-13</b>															
1C-17-YP3.1-570	Comms Ducts & Chambers	0	27-Feb-13		0%	19-Oct-12																
1C-17-YP3.1-361	Traction Ducts & Chambers	11	27-Feb-13	14-Mar-13	0%	19-Oct-12	02-Nov-12															
1C-17-YP3.1-550	Installation of IMU Drains and Cable Ducting	2	01-Mar-13	05-Mar-13	0%	23-Oct-12	24-Oct-12															
1C-17-YP3.1-342	Traffic Signal Ducts	7	12-Mar-13	21-Mar-13	0%	01-Nov-12	09-Nov-12															
1C-17-YP3.1-333	Lighting Ducts	21	12-Mar-13	11-Apr-13	0%	01-Nov-12	02-Jan-13															
<b>Drains</b>		<b>17</b>	<b>15-Feb-13</b>	<b>12-Mar-13</b>	<b>0%</b>	<b>09-Oct-12</b>	<b>31-Oct-12</b>															
1C-17-YP3.1-408	Outfall Connections	3	15-Feb-13	20-Feb-13	0%	09-Oct-12	11-Oct-12															
1C-17-YP3.1-269	Drainage to Discharge Points	14	20-Feb-13	12-Mar-13	0%	12-Oct-12	31-Oct-12															
<b>Pavement Construction over tracks</b>		<b>13</b>	<b>11-Apr-13</b>	<b>30-Apr-13</b>	<b>0%</b>	<b>03-Jan-13</b>	<b>21-Jan-13</b>															
1C-17-YP3.1-324	Concrete Upstand	8	11-Apr-13	23-Apr-13	0%	03-Jan-13	14-Jan-13															
1C-17-YP3.1-335	Setts	6	16-Apr-13	24-Apr-13	0%	08-Jan-13	15-Jan-13															
1C-17-YP3.1-336	Sealant to Rail Joint	4	24-Apr-13	30-Apr-13	0%	16-Jan-13	21-Jan-13															
<b>Carriageway Construction</b>		<b>78</b>	<b>27-Feb-13</b>	<b>17-Jun-13</b>	<b>0%</b>	<b>19-Oct-12</b>	<b>06-Mar-13</b>															
1C-17-YP3.1-278	Sub-base 220mm all carriageway areas (bituminous and setts)	3	27-Feb-13	04-Mar-13	0%	19-Oct-12	23-Oct-12															

Date	Revision	Checked	Approved	Date	Revision	Checked	Approved
02-Feb...	Revision 0	SCS/M...	BSC	28-Jun-11	Revision 3a	SCS/MHE	BSC
16-Feb...	Revision 1	SCS/M...	BSC	08-Sep-11	Revision 4	SCS	BSC
18-Feb...	Revision 2	SCS/M...	BSC	16-Feb-12	Revision 4c	SCS	BBS
06-Ma...	Revision 3	SCS/M...	BSC	21-Jun-12	Revision 5c	SCS	BBS
				25-Oct-12	Rev. 5c Progressed to 121013	SCS	BBS

- Remaining Level of Effort
- Critical Remaining Work
- Changed Works
- Revision 5c
- Actual Work
- Remaining Work
- Rev 5c Milestone
- Milestone
- Changed Works
- Summary



# EDINBURGH TRAM NETWORK

Activity ID	Activity Name	Original Duration	Start	Finish	Duration % Complete	Rev 5c Start	Rev 5c Finish	2012													
								Jan	Feb	Mar	Apr	May	Jun	Jul	Aug	Sep	Oct	Nov	Dec		
1C-17-YP3.1-279	Kerbing	10	11-Apr-13	25-Apr-13	0%	03-Jan-13	16-Jan-13														
1C-17-YP3.1-580	Gullies	5	19-Apr-13	26-Apr-13	0%	11-Jan-13	17-Jan-13														
1C-17-YP3.1-352	Sub-base shape all carriageway areas	1	25-Apr-13	26-Apr-13	0%	17-Jan-13	17-Jan-13														
1C-17-YP3.1-343	Traffic Signals	4	25-Apr-13	01-May-13	0%	17-Jan-13	22-Jan-13														
1C-17-YP3.1-362	Setts	2	26-Apr-13	30-Apr-13	0%	18-Jan-13	21-Jan-13														
1C-17-YP3.1-346	225mm Base	2	30-Apr-13	02-May-13	0%	22-Jan-13	23-Jan-13														
1C-17-YP3.1-237	60mm Binder	1	02-May-13	03-May-13	0%	24-Jan-13	24-Jan-13														
1C-17-YP3.1-288	35mm Wearing Course	1	03-May-13	07-May-13	0%	25-Jan-13	25-Jan-13														
1C-17-YP3.1-334	Footpath Works	14	28-May-13	17-Jun-13	0%	15-Feb-13	06-Mar-13														
<b>Finishes</b>		20	15-Apr-13	13-May-13	0%	07-Jan-13	31-Jan-13														
1C-17-YP3.1-371	Signs / Street Furniture	5	15-Apr-13	22-Apr-13	0%	07-Jan-13	11-Jan-13														
1C-17-YP3.1-298	Joint Sealing Compound to upstand	4	07-May-13	13-May-13	0%	28-Jan-13	31-Jan-13														
<b>Phase 3.2 outbound Ch 680 to 865</b>		84	20-Feb-13	18-Jun-13	0%	12-Oct-12	07-Mar-13														
<b>Excavation &amp; Track Construction</b>		58	20-Feb-13	13-May-13	0%	12-Oct-12	31-Jan-13														
<b>Excavation</b>		12	20-Feb-13	08-Mar-13	0%	12-Oct-12	29-Oct-12														
1C-17-YP3.2-1000	Plane Main Carriageway 250mm	4	20-Feb-13	26-Feb-13	0%	12-Oct-12	17-Oct-12														
1C-17-YP3.2-1010	Excavate to Formation for Carriageway and Track (incl for Capping/Type 1)	6	26-Feb-13	06-Mar-13	0%	18-Oct-12	25-Oct-12														
1C-17-YP3.2-1020	Remove existing kerbs to store.	6	26-Feb-13	06-Mar-13	0%	18-Oct-12	25-Oct-12														
1C-17-YP3.2-1030	Check suitability of formation (ongoing)	0	26-Feb-13		0%	18-Oct-12															
1C-17-YP3.2-1040	Capping Layer to Adjacent Carriageway (600mm)	6	26-Feb-13	06-Mar-13	0%	18-Oct-12	25-Oct-12														
1C-17-YP3.2-1050	Make good Formation with Type 1 (Ave 220mm)	4	04-Mar-13	08-Mar-13	0%	24-Oct-12	29-Oct-12														
<b>OLE Foundations</b>		0			0%																
<b>Trackform</b>		16	13-Mar-13	04-Apr-13	0%	02-Nov-12	22-Nov-12														
1C-17-YP3.2-1070	Carry out inspection and testing of Subgrade	2	13-Mar-13	15-Mar-13	0%	02-Nov-12	05-Nov-12														
1C-17-YP3.2-1080	Blinding Concrete	3	15-Mar-13	20-Mar-13	0%	06-Nov-12	08-Nov-12														
1C-17-YP3.2-1090	Place RC Improvement Slab (+ cure lag)	10	20-Mar-13	04-Apr-13	0%	09-Nov-12	22-Nov-12														
<b>Track Laying</b>		27	04-Apr-13	13-May-13	0%	23-Nov-12	31-Jan-13														
1C-17-YP3.2-1100	Installation of Noise & Vibration Mat (Ch 735 to Ch 735)	6	04-Apr-13	12-Apr-13	0%	23-Nov-12	03-Jan-13														
1C-17-YP3.2-1110	Access for Track Laying	0	16-Apr-13		0%	08-Jan-13															
1C-17-YP3.2-1120	Set Cross over	10	16-Apr-13	30-Apr-13	0%	08-Jan-13	21-Jan-13														
1C-17-YP3.2-1130	Set track (1x185m)(sleepers/rail)	8	30-Apr-13	13-May-13	0%	22-Jan-13	31-Jan-13														
1C-17-YP3.2-1140	Welding & Grinding	6	01-May-13	10-May-13	0%	23-Jan-13	30-Jan-13														
1C-17-YP3.2-1150	Drainage / Rail Connections	6	02-May-13	13-May-13	0%	24-Jan-13	31-Jan-13														
1C-17-YP3.2-1160	Installation of IMU Boxes and Loops	6	02-May-13	13-May-13	0%	24-Jan-13	31-Jan-13														
1C-17-YP3.2-1170	Final Rail Alignment - Check and Approve	6	02-May-13	13-May-13	0%	24-Jan-13	31-Jan-13														
1C-17-YP3.2-1180	230mm Concrete Supporting Layer (+ cure lag)	4	07-May-13	13-May-13	0%	28-Jan-13	31-Jan-13														
<b>Drainage &amp; Ducts</b>		44	20-Feb-13	23-Apr-13	0%	12-Oct-12	14-Jan-13														
<b>Ducts</b>		34	06-Mar-13	23-Apr-13	0%	26-Oct-12	14-Jan-13														
1C-17-YP3.2-1210	Comms Ducts & Chambers	0	06-Mar-13		0%	26-Oct-12															
1C-17-YP3.2-1220	Traction Ducts & Chambers	13	06-Mar-13	25-Mar-13	0%	26-Oct-12	13-Nov-12														
1C-17-YP3.2-1060	Installation of IMU Drains and Cable Ducting	3	08-Mar-13	13-Mar-13	0%	30-Oct-12	01-Nov-12														
1C-17-YP3.2-1230	Traffic Signal Ducts	9	20-Mar-13	03-Apr-13	0%	09-Nov-12	21-Nov-12														
1C-17-YP3.2-1240	Lighting Ducts	23	20-Mar-13	23-Apr-13	0%	09-Nov-12	14-Jan-13														
<b>Drains</b>		20	20-Feb-13	20-Mar-13	0%	12-Oct-12	08-Nov-12														
1C-17-YP3.2-1190	Outfall Connections	4	20-Feb-13	26-Feb-13	0%	12-Oct-12	17-Oct-12														
1C-17-YP3.2-1200	Drainage to Discharge Points	16	26-Feb-13	20-Mar-13	0%	18-Oct-12	08-Nov-12														

Date	Revision	Checked	Approved	Date	Revision	Checked	Approved
02-Feb...	Revision 0	SCS/M...	BSC	28-Jun-11	Revision 3a	SCS/MHE	BSC
16-Feb...	Revision 1	SCS/M...	BSC	08-Sep-11	Revision 4	SCS	BSC
18-Feb...	Revision 2	SCS/M...	BSC	16-Feb-12	Revision 4c	SCS	BBS
06-Ma...	Revision 3	SCS/M...	BSC	21-Jun-12	Revision 5c	SCS	BBS
				25-Oct-12	Rev. 5c Progressed to 121013	SCS	BBS

- Remaining Level of Effort
- Critical Remaining Work
- Changed Works
- Rev 5c Milestone
- Revision 5c
- Milestone
- Actual Work
- Changed Works
- Remaining Work
- Summary



# EDINBURGH TRAM NETWORK

Activity ID	Activity Name	Original Duration	Start	Finish	Duration % Complete	Rev 5c Start	Rev 5c Finish	2012												
								Jan	Feb	Mar	Apr	May	Jun	Jul	Aug	Sep	Oct	Nov	Dec	
<b>Pavement Construction over tracks</b>																				
1C-17-YP3.2-1250	Concrete Upstand	10	13-May-13	31-May-13	0%	01-Feb-13	19-Feb-13													
1C-17-YP3.2-1260	Setts	6	16-May-13	24-May-13	0%	06-Feb-13	13-Feb-13													
1C-17-YP3.2-1270	Sealant to Rail Joint	4	24-May-13	31-May-13	0%	14-Feb-13	19-Feb-13													
<b>Carriageway Construction</b>																				
1C-17-YP3.2-1280	Sub-base 220mm all carriageway areas (bituminous and setts)	4	06-Mar-13	12-Mar-13	0%	26-Oct-12	31-Oct-12													
1C-17-YP3.2-1290	Kerbing	11	13-May-13	29-May-13	0%	01-Feb-13	15-Feb-13													
1C-17-YP3.2-1310	Gullies	6	21-May-13	30-May-13	0%	11-Feb-13	18-Feb-13													
1C-17-YP3.2-1320	Sub-base shape all carriageway areas	2	28-May-13	30-May-13	0%	15-Feb-13	18-Feb-13													
1C-17-YP3.2-1330	Traffic Signals	5	29-May-13	05-Jun-13	0%	18-Feb-13	22-Feb-13													
1C-17-YP3.2-1340	Footpath Works	14	29-May-13	18-Jun-13	0%	18-Feb-13	07-Mar-13													
1C-17-YP3.2-1350	225mm Base	3	04-Jun-13	07-Jun-13	0%	22-Feb-13	26-Feb-13													
1C-17-YP3.2-1360	60mm Binder	2	07-Jun-13	11-Jun-13	0%	27-Feb-13	28-Feb-13													
1C-17-YP3.2-1370	35mm Wearing Course	2	11-Jun-13	13-Jun-13	0%	01-Mar-13	04-Mar-13													
<b>Finishes</b>																				
1C-17-YP3.2-1300	Signs / Street Furniture	6	15-May-13	23-May-13	0%	05-Feb-13	12-Feb-13													
1C-17-YP3.2-1380	Joint Sealing Compound to Concrete Upstand	1	13-Jun-13	14-Jun-13	0%	05-Mar-13	05-Mar-13													
<b>Traffic Lights</b>																				
<b>Phase 3.3 inbound Ch 960 to 1027</b>																				
<b>Excavation &amp; Track Construction</b>																				
<b>Excavation</b>																				
1C-17-YP3.3-246	Plane Main Carriageway 250mm	1	13-May-13	14-May-13	0%	01-Feb-13	01-Feb-13													
1C-17-YP3.3-285	Excavate to Formation for Carriageway and Track (incl for Capping/Type 1)	2	14-May-13	16-May-13	0%	04-Feb-13	05-Feb-13													
1C-17-YP3.3-296	Remove existing kerbs to store.	1	14-May-13	15-May-13	0%	04-Feb-13	04-Feb-13													
1C-17-YP3.3-327	Check suitability of formation (ongoing)	0	14-May-13		0%	04-Feb-13														
1C-17-YP3.3-358	Capping Layer to Adjacent Carriageway (600mm)	2	14-May-13	16-May-13	0%	04-Feb-13	05-Feb-13													
1C-17-YP3.3-319	Make good Formation with Type 1 (Ave 220mm)	1	16-May-13	17-May-13	0%	06-Feb-13	06-Feb-13													
<b>OLE Foundations</b>																				
<b>Trackform</b>																				
1C-17-YP3.3-301	Carry out inspection and testing of Subgrade	1	20-May-13	21-May-13	0%	08-Feb-13	08-Feb-13													
1C-17-YP3.3-302	Blinding Concrete	1	21-May-13	22-May-13	0%	11-Feb-13	11-Feb-13													
1C-17-YP3.3-293	Place RC Improvement Slab (+ cure lag)	4	22-May-13	29-May-13	0%	12-Feb-13	15-Feb-13													
<b>Track Laying</b>																				
1C-17-YP3.3-295	Installation of Noise & Vibration Mat (Ch 935 to 109)	4	29-May-13	04-Jun-13	0%	18-Feb-13	21-Feb-13													
1C-17-YP3.3-254	Access for Track Laying	0	06-Jun-13		0%	26-Feb-13														
1C-17-TRCK-120	Set track (1x67m)(sleepers/rail)	5	06-Jun-13	13-Jun-13	0%	26-Feb-13	04-Mar-13													
1C-17-YP3.3-337	Welding & Grinding	3	11-Jun-13	14-Jun-13	0%	01-Mar-13	05-Mar-13													
1C-17-YP3.3-368	Drainage / Rail Connections	3	11-Jun-13	14-Jun-13	0%	01-Mar-13	05-Mar-13													
1C-17-YP3.3-329	Installation of IMU Boxes and Loops	3	11-Jun-13	14-Jun-13	0%	01-Mar-13	05-Mar-13													
1C-17-YP3.3-520	Final Rail Alignment - Check and Approve	3	12-Jun-13	17-Jun-13	0%	04-Mar-13	06-Mar-13													
1C-17-YP3.3-311	230mm Concrete Supporting Layer (+ cure lag)	3	14-Jun-13	19-Jun-13	0%	06-Mar-13	08-Mar-13													
<b>Drainage &amp; Ducts</b>																				
<b>Ducts</b>																				
1C-17-YP3.3-530	Traction Ducts & Chambers	0	16-May-13	24-May-13	0%	06-Feb-13	13-Feb-13													
1C-17-YP3.3-321	Comms Ducts & Chambers	4	16-May-13	22-May-13	0%	06-Feb-13	11-Feb-13													

Date	Revision	Checked	Approved	Date	Revision	Checked	Approved
02-Feb...	Revision 0	SCS/M...	BSC	28-Jun-11	Revision 3a	SCS/MHE	BSC
16-Feb...	Revision 1	SCS/M...	BSC	08-Sep-11	Revision 4	SCS	BSC
18-Feb...	Revision 2	SCS/M...	BSC	16-Feb-12	Revision 4c	SCS	BBS
06-Ma...	Revision 3	SCS/M...	BSC	21-Jun-12	Revision 5c	SCS	BBS
				25-Oct-12	Rev. 5c Progressed to 121013	SCS	BBS

- Remaining Level of Effort
- Changed Works
- Revision 5c
- Actual Work
- Remaining Work
- Critical Remaining Work
- Rev 5c Milestone
- Milestone
- Changed Works
- Summary



# EDINBURGH TRAM NETWORK

Activity ID	Activity Name	Original Duration	Start	Finish	Duration % Complete	Rev 5c Start	Rev 5c Finish	2012													
								Jan	Feb	Mar	Apr	May	Jun	Jul	Aug	Sep	Oct	Nov	Dec		
1C-17-YP3.3-510	Installation of IMU Drains and Cable Ducting	1	17-May-13	20-May-13	0%	07-Feb-13	07-Feb-13														
1C-17-YP3.3-312	Traffic Signal Ducts	4	20-May-13	24-May-13	0%	08-Feb-13	13-Feb-13														
1C-17-YP3.3-303	Lighting Ducts	4	20-May-13	24-May-13	0%	08-Feb-13	13-Feb-13														
<b>Drains</b>		5	13-May-13	20-May-13	0%	01-Feb-13	07-Feb-13														
1C-17-YP3.3-378	Outfall Connections	1	13-May-13	14-May-13	0%	01-Feb-13	01-Feb-13														
1C-17-YP3.3-249	Drainage to Discharge Points	4	14-May-13	20-May-13	0%	04-Feb-13	07-Feb-13														
<b>Pavement Construction over tracks</b>		8	19-Jun-13	01-Jul-13	0%	11-Mar-13	20-Mar-13														
1C-17-YP3.3-304	Concrete Upstand	5	19-Jun-13	26-Jun-13	0%	11-Mar-13	15-Mar-13														
1C-17-YP3.3-305	Setts	3	24-Jun-13	27-Jun-13	0%	14-Mar-13	18-Mar-13														
1C-17-YP3.3-306	Rail Joint Sealant	2	27-Jun-13	01-Jul-13	0%	19-Mar-13	20-Mar-13														
<b>Carriageway Construction</b>		40	16-May-13	11-Jul-13	0%	06-Feb-13	02-Apr-13														
1C-17-YP3.3-258	Sub-base 220mm all carriageway areas (bituminous and setts)	2	16-May-13	20-May-13	0%	06-Feb-13	07-Feb-13														
1C-17-YP3.3-259	Kerbing	2	19-Jun-13	21-Jun-13	0%	11-Mar-13	12-Mar-13														
1C-17-YP3.3-540	Gullies	2	20-Jun-13	24-Jun-13	0%	12-Mar-13	13-Mar-13														
1C-17-YP3.3-322	Sub-base shape all carriageway areas	1	21-Jun-13	24-Jun-13	0%	13-Mar-13	13-Mar-13														
1C-17-YP3.3-313	Traffic Signals	4	21-Jun-13	27-Jun-13	0%	13-Mar-13	18-Mar-13														
1C-17-YP3.3-314	Footpath Works	5	21-Jun-13	28-Jun-13	0%	13-Mar-13	19-Mar-13														
1C-17-YP3.3-324	Setts	5	24-Jun-13	01-Jul-13	0%	14-Mar-13	20-Mar-13														
1C-17-YP3.3-316	225mm Base	2	03-Jul-13	05-Jul-13	0%	25-Mar-13	26-Mar-13														
1C-17-YP3.3-227	60mm Binder	1	05-Jul-13	08-Jul-13	0%	27-Mar-13	27-Mar-13														
1C-17-YP3.3-268	35mm Wearing Course	1	08-Jul-13	09-Jul-13	0%	28-Mar-13	28-Mar-13														
<b>Finishes</b>		14	21-Jun-13	11-Jul-13	0%	13-Mar-13	02-Apr-13														
1C-17-YP3.3-331	Signs / Street Furniture	2	21-Jun-13	25-Jun-13	0%	13-Mar-13	14-Mar-13														
1C-17-YP3.3-288	Carriageway Joint Sealing Compound to upstand	2	09-Jul-13	11-Jul-13	0%	01-Apr-13	02-Apr-13														
<b>Commissioning &amp; Testing</b>		5	11-Jul-13	18-Jul-13	0%	03-Apr-13	09-Apr-13														
1C-17-YP3.3-278	Commissioning & Testing	5	11-Jul-13	18-Jul-13	0%	03-Apr-13	09-Apr-13														
<b>Traffic Lights &amp; Points Machine</b>		48	30-Apr-13	05-Jul-13	0%	22-Jan-13	26-Mar-13														
1C-17D-SIGN-70	point machine mechanical set up	10	30-Apr-13	15-May-13	0%	22-Jan-13	04-Feb-13														
1C-17D-SIGN-80	point machine mechanical set up	10	15-May-13	30-May-13	0%	05-Feb-13	18-Feb-13														
1C-17F-JNCS-60	installation of traffic light control - Junction 26	18	24-May-13	20-Jun-13	0%	14-Feb-13	11-Mar-13														
1C-17H-JNCS-60	installation of traffic light control - Junction 27 part1	3	20-Jun-13	25-Jun-13	0%	12-Mar-13	14-Mar-13														
1C-17I-JNCS-60	installation of traffic light control - Junction 27 part2	4	25-Jun-13	01-Jul-13	0%	15-Mar-13	20-Mar-13														
1C-17J-JNCS-60	installation of traffic light control - Junction 28 part1	4	01-Jul-13	05-Jul-13	0%	21-Mar-13	26-Mar-13														
<b>Picardy Place Temporary Tram Stop</b>		119	22-Feb-13	08-Aug-13	0%	16-Oct-12	29-Apr-13														
1C-17-TRMS-90	Civil Engineering And Building Works	65	22-Feb-13	29-May-13	0%	16-Oct-12	15-Feb-13														
1C-17-TRMS-20	Order REC Supply	0	08-Mar-13		0%	30-Oct-12															
1C-17-TRMS-30	Access for visual inspection for E&M Tram Stop installation (01C Picardy Place)	0	05-Apr-13		0%	13-Dec-12															
1C-17-TRMS-40	Deliver and Install Shelter	10	22-Apr-13	07-May-13	0%	14-Jan-13	25-Jan-13														
1C-17-TRMS-31	Access for E&M Tram Stop installation (01C Picardy Place)	0	07-May-13		0%	28-Jan-13															
1C-17-TRMS-45	Deliver and Install cubicle	10	07-May-13	21-May-13	0%	28-Jan-13	08-Feb-13														
1C-17-TRMS-50	Install LV Power Supply and LV Power Equipment	25	21-May-13	26-Jun-13	0%	11-Feb-13	15-Mar-13														
1C-17-TRMS-70	Install Telecon Equipment	20	26-Jun-13	24-Jul-13	0%	18-Mar-13	15-Apr-13														
1C-17-TRMS-60	Install Station Control Equipment + AFC Equipment	25	26-Jun-13	31-Jul-13	0%	18-Mar-13	22-Apr-13														
1C-17-TRMS-80	Package Test Tramstop	5	31-Jul-13	08-Aug-13	0%	23-Apr-13	29-Apr-13														

Date	Revision	Checked	Approved	Date	Revision	Checked	Approved
02-Feb...	Revision 0	SCS/M...	BSC	28-Jun-11	Revision 3a	SCS/MHE	BSC
16-Feb...	Revision 1	SCS/M...	BSC	08-Sep-11	Revision 4	SCS	BSC
18-Feb...	Revision 2	SCS/M...	BSC	16-Feb-12	Revision 4c	SCS	BBS
06-Ma...	Revision 3	SCS/M...	BSC	21-Jun-12	Revision 5c	SCS	BBS
				25-Oct-12	Rev. 5c Progressed to 121013	SCS	BBS

- Remaining Level of Effort
- Changed Works
- Revision 5c
- Actual Work
- Remaining Work
- Critical Remaining Work
- Rev 5c Milestone
- Milestone
- Changed Works
- Summary



# EDINBURGH TRAM NETWORK



Activity ID	Activity Name	Original Duration	Start	Finish	Duration % Complete	Rev 5c Start	Rev 5c Finish	2012											
								Jan	Feb	Mar	Apr	May	Jun	Jul	Aug	Sep	Oct	Nov	Dec
<b>Cathedral SubStation</b>																			
1C-17-SUBS-90	Civil Engineering and Building Works	65	03-Sep-12 A	23-May-13	5%	16-Oct-12	02-Jul-13												
1C-17-SUBS-30	Access for visual inspection for E&M substation installation (01C Cathedral)	0	22-Apr-13		0%	17-Jan-13													
1C-17-SUBS-100	cable duct for Power Infeed	5	22-Apr-13	29-Apr-13	0%	17-Jan-13	24-Jan-13												
1C-17-SUBS-31	Access for E&M substation installation (01C Cathedral)	0	23-May-13		0%	18-Feb-13													
1C-17-SUBS-45	Install HV Power Supply and Equipment (SP)	20	23-May-13	21-Jun-13	0%	18-Feb-13	15-Mar-13												
1C-17-SUBS-50	Install LV Power Supply and LV Power Equipment	15	21-Jun-13	12-Jul-13	0%	18-Mar-13	08-Apr-13												
1C-17-SUBS-55	Energisation Scottish Power	0	05-Jul-13		0%	02-Apr-13													
1C-17-SUBS-40	Power Infeed from Public Net available inc HV cable	0	08-Jul-13		0%	03-Apr-13													
1C-17-SUBS-70	Install Telecom and Scada	15	12-Jul-13	02-Aug-13	0%	09-Apr-13	29-Apr-13												
1C-17-SUBS-60	Installation of TPS Equipment	30	02-Aug-13	13-Sep-13	0%	30-Apr-13	12-Jun-13												
1C-17-SUBS-80	Testing and Commissioning	14	13-Sep-13	03-Oct-13	0%	13-Jun-13	02-Jul-13												
<b>St. Andrews Square (inc.) to Princes Street West (exc.)</b>																			
<b>Road &amp; Track Works</b>																			
<b>St Andrews Square Ch 1027 to 1171</b>																			
<b>Constraints / Procedures / Documentation / Approvals</b>																			
1C-16-SAS-240	Request Permit to Commence Work	0	03-Oct-11 A	10-Jan-12 A	100%	31-Jan-12													
1C-16-SAS-250	Request TTRO's	0	12-Dec-11 A		100%	24-Jan-12													
1C-16-SAS-210	Prepare Method Statements & Risk Assessment	0	10-Jan-12 A		100%	10-Jan-12													
1C-16-SAS-220	Stakeholder Notifications (including Traffic Management)	0	10-Jan-12 A		100%	10-Jan-12													
1C-16-SAS-230	Apply for 3rd Party Licence	0	10-Jan-12 A		100%	10-Jan-12													
<b>Traffic Management &amp; Site Establishment</b>																			
1C-16-SAS-169	St Andrews Square TM enabling Works	5	19-Dec-11 A	06-Jan-12 A	100%	07-Feb-12	13-Feb-12												
1C-16-SAS-262	Erect Pedestrian Barrier	1	07-Jan-12 A	08-Jan-12 A	100%	14-Feb-12	14-Feb-12												
1C-16-SAS-193	Site Compound & Site Clearance	12	09-Jan-12 A	17-Oct-12	80%	14-Feb-12	29-Feb-12												
1C-16-SAS-254	Investigate services / outfall positions / inlet-outlet positions / levels	4	02-Apr-12 A	02-Apr-12 A	100%	15-Feb-12	20-Feb-12												
<b>Phase 1 - Inbound Ch 1027 to 1171</b>																			
<b>Excavation &amp; Track Construction</b>																			
<b>Excavation</b>																			
<b>Make Good Formation</b>																			
1C-16-SAS1-259-D1	Service Diversion Works by T&T	0	24-Feb-12 A	27-Mar-12 A	100%														
1C-16-SAS1-259-D3	Awaiting VE Scope	0	15-Mar-12 A	15-Oct-12	0%														
1C-16-SAS1-259	Make good Formation with Type 1 (Ave 220mm)	2	22-Mar-12 A	17-Oct-12	95%	24-Feb-12	27-Feb-12												
1C-16-SAS1-259-D2	Works Commenced Out of Sequence	0	22-Mar-12 A	06-Jun-12 A	100%														
1C-16-SAS1-259-D4	North Clyde St Lane Access	0	06-Jun-12 A	15-Oct-12	0%														
<b>Plane</b>																			
1C-16-SAS1-186	Plane Main Carriageway 250mm	3	09-Jan-12 A	22-Jun-12 A	100%	15-Feb-12	17-Feb-12												
1C-16-SAS1-186-D1	Service Investigations by T&T	0	09-Jan-12 A	22-Jun-12 A	100%														
<b>Excavate</b>																			
1C-16-SAS1-195	Excavate to Formation for Carriageway and Track (ind for Capping/Type 1)	4	22-Feb-12 A	15-Oct-12	85%	20-Feb-12	23-Feb-12												
1C-16-SAS1-195-D1	Service Investigations by T&T	0	24-Feb-12 A	08-Mar-12 A	100%														
1C-16-SAS1-195-D2	Service Investigations by T&T	0	28-Feb-12 A	09-Mar-12 A	100%														

Date	Revision	Checked	Approved	Date	Revision	Checked	Approved
02-Feb...	Revision 0	SCS/M...	BSC	28-Jun-11	Revision 3a	SCS/MHE	BSC
16-Feb...	Revision 1	SCS/M...	BSC	08-Sep-11	Revision 4	SCS	BSC
18-Feb...	Revision 2	SCS/M...	BSC	16-Feb-12	Revision 4c	SCS	BBS
06-Ma...	Revision 3	SCS/M...	BSC	21-Jun-12	Revision 5c	SCS	BBS
				25-Oct-12	Rev. 5c Progressed to 121013	SCS	BBS

- Remaining Level of Effort
- Critical Remaining Work
- Changed Works
- Revision 5c
- Actual Work
- Remaining Work
- Rev 5c Milestone
- Milestone
- Changed Works
- Summary







Activity ID	Activity Name	Original Duration	Start	Finish	Duration % Complete	Rev 5c Start	Rev 5c Finish	2012											
								Jan	Feb	Mar	Apr	May	Jun	Jul	Aug	Sep	Oct	Nov	Dec
<b>Access For Track Laying</b>		233	22-Mar-12 A	20-Aug-12 A	100%	22-Mar-12	22-Mar-12	20-Aug-12 A, Access For Track Laying											
1C-16-SAS1-194-D1	Service Investigation Works by T&T	0	22-Mar-12 A	29-Jun-12 A	100%			Service Investigation Works by T&T											
1C-16-SAS1-194	Access for Track Laying	0	20-Aug-12 A		100%	22-Mar-12		Access for Track Laying											
<b>Set Track</b>		241	29-Jun-12 A	24-Oct-12	97.07%	22-Mar-12	02-Apr-12	24-Oct-12, Set Track											
1C-16-SAS1-80-D1	Out of Sequence Working	0	29-Jun-12 A	15-Oct-12	0%			Out of Sequence Working											
1C-16-TRCK-80	Set track (1x144m)(sleepers/rail)	8	20-Aug-12 A	24-Oct-12	85%	22-Mar-12	02-Apr-12	Set track (1x144m)(sleepers/rail)											
<b>Drainage &amp; Ducts</b>		209	01-Jun-11 A	31-Oct-12	94.12%	17-Feb-12	28-Mar-12	31-Oct-12, Drainage											
<b>Ducts</b>		209	24-Feb-12 A	31-Oct-12	94.12%	24-Feb-12	28-Mar-12	31-Oct-12, Ducts											
<b>Traffic Signal Ducts</b>		199	24-Feb-12 A	19-Oct-12	97.94%	07-Mar-12	14-Mar-12	19-Oct-12, Traffic Signal											
1C-16-SAS1-202-D1	Site Investigation works by T&T	0	24-Feb-12 A	24-May-12 A	100%			Site Investigation works by T&T											
1C-16-SAS1-202	Traffic Signal Ducts	6	14-May-12 A	19-Oct-12	50%	07-Mar-12	14-Mar-12	Traffic Signal Ducts											
1C-16-SAS1-202-D2	Out of Sequence Working	0	25-May-12 A	15-Oct-12	0%			Out of Sequence Working											
<b>Comms Ducts</b>		195	24-Feb-12 A	22-Oct-12	97.03%	24-Feb-12	07-Mar-12	22-Oct-12, Comms Ducts											
1C-16-SAS1-201-D1	Site Investigation works by T&T	0	24-Feb-12 A	24-May-12 A	100%			Site Investigation works by T&T											
1C-16-SAS1-201	Comms Ducts & Chambers	9	14-May-12 A	22-Oct-12	80%	24-Feb-12	07-Mar-12	Comms Ducts & Chambers											
1C-16-SAS1-201-D2	Out of Sequence Working	0	25-May-12 A	15-Oct-12	0%			Out of Sequence Working											
<b>Traction Ducts</b>		186	24-Feb-12 A	15-Oct-12	100%	24-Feb-12	24-Feb-12	15-Oct-12, Traction Ducts											
1C-16-SAS1-410-D1	Site Investigation works by T&T	0	24-Feb-12 A	24-May-12 A	100%			Site Investigation works by T&T											
1C-16-SAS1-410-D2	Out of Sequence Working	0	25-May-12 A	15-Oct-12	0%			Out of Sequence Working											
1C-16-SAS1-410	Traction Ducts & Chambers	0	04-Jun-12 A		100%	24-Feb-12		Traction Ducts & Chambers											
<b>Lighting Ducts</b>		209	07-Mar-12 A	31-Oct-12	94.12%	07-Mar-12	28-Mar-12	31-Oct-12, Lighting											
1C-16-SAS1-213-D1	Site Investigation works by T&T	0	07-Mar-12 A	24-May-12 A	100%			Site Investigation works by T&T											
1C-16-SAS1-213	Lighting Ducts	16	14-May-12 A	31-Oct-12	30%	07-Mar-12	28-Mar-12	Lighting Ducts											
1C-16-SAS1-213-D2	Out of Sequence Working	0	25-May-12 A	15-Oct-12	0%			Out of Sequence Working											
<b>Installation of IMU Drains and Cable Ducting</b>		187	28-Feb-12 A	14-Jun-12 A	100%	28-Feb-12	29-Feb-12	14-Jun-12 A, Installation of IMU Drains and Cable Ducting											
1C-16-SAS1-390-D1	Service Investigation Works by T&T	0	28-Feb-12 A	07-Mar-12 A	100%			Service Investigation Works by T&T											
1C-16-SAS1-390-D2	Drainage & Ducting works on hold pending re design	0	09-Mar-12 A	06-Jun-12 A	100%			Drainage & Ducting works on hold pending re design											
1C-16-SAS1-390	Installation of IMU Drains and Cable Ducting	2	15-Apr-12 A	14-Jun-12 A	100%	28-Feb-12	29-Feb-12	Installation of IMU Drains and Cable Ducting											
<b>Drains</b>		193	01-Jun-11 A	16-Oct-12	99.43%	17-Feb-12	06-Mar-12	16-Oct-12, Drains											
<b>Outfall Connections</b>		185	17-Feb-12 A	15-Oct-12	100%	17-Feb-12	21-Feb-12	15-Oct-12, Outfall Connections											
1C-16-SAS1-288-D1	T&T Service Investigations	0	17-Feb-12 A	24-May-12 A	100%			T&T Service Investigations											
1C-16-SAS1-288-D2	Remedial Works after works by others	0	24-May-12 A	01-Jun-12 A	100%			Remedial Works after works by others											
1C-16-SAS1-288	Outfall Connections	3	28-May-12 A	15-Oct-12	100%	17-Feb-12	21-Feb-12	Outfall Connections											
<b>Drainage to Discharge Points</b>		193	01-Jun-11 A	16-Oct-12	99.43%	21-Feb-12	06-Mar-12	16-Oct-12, Drainage to Discharge Points											
1C-16-SAS1-189-D2	Remedial Works to blinding Required	0	01-Jun-11 A	15-Oct-12	0%			Remedial Works to blinding											
1C-16-SAS1-189-D1	Service Investigations by T&T	0	21-Feb-12 A	24-May-12 A	100%			Service Investigations by T&T											
1C-16-SAS1-189	Drainage to Discharge Points	11	23-Apr-12 A	16-Oct-12	90%	21-Feb-12	06-Mar-12	Drainage to Discharge Points											
1C-16-SAS1-189-D3	Out of Sequence Working	0	25-May-12 A	15-Oct-12	0%			Out of Sequence Working											
<b>Pavement Construction over tracks</b>		186	19-Apr-12 A	05-Nov-12	91.52%	11-Apr-12	20-Apr-12	05-Nov-12, Pavement Construction											
<b>Setts</b>		183	19-Apr-12 A	31-Oct-12	93.02%	11-Apr-12	17-Apr-12	31-Oct-12, Setts											
1C-16-SAS1-223-D1	Site Occupied by TT	0	19-Apr-12 A	15-Oct-12	0%			Site Occupied by TT											
1C-16-SAS1-223	Setts	5	24-Oct-12	31-Oct-12	0%	11-Apr-12	17-Apr-12	Setts											
<b>124 Binder</b>		184	25-Apr-12 A	01-Nov-12	92.52%	17-Apr-12	18-Apr-12	01-Nov-12, 124 Binder											
1C-16-SAS1-264-D1	Site Occupied by TT	0	25-Apr-12 A	15-Oct-12	0%			Site Occupied by TT											
1C-16-SAS1-264	124mm Binder	2	30-Oct-12	01-Nov-12	0%	17-Apr-12	18-Apr-12	124mm Binder											
<b>335mm wearing course</b>		185	27-Apr-12 A	02-Nov-12	92.02%	19-Apr-12	19-Apr-12	02-Nov-12, 335mm wearing course											

Date	Revision	Checked	Approved	Date	Revision	Checked	Approved
02-Feb...	Revision 0	SCS/M...	BSC	28-Jun-11	Revision 3a	SCS/MHE	BSC
16-Feb...	Revision 1	SCS/M...	BSC	08-Sep-11	Revision 4	SCS	BSC
18-Feb...	Revision 2	SCS/M...	BSC	16-Feb-12	Revision 4c	SCS	BBS
06-Ma...	Revision 3	SCS/M...	BSC	21-Jun-12	Revision 5c	SCS	BBS
				25-Oct-12	Rev. 5c Progressed to 121013	SCS	BBS

█ Remaining Level of Effort     █ Critical Remaining Work  
█ Changed Works     ◆ Rev 5c Milestone  
█ Revision 5c     ◆ Milestone  
█ Actual Work     ◆ Changed Works  
█ Remaining Work     ▶ Summary







# EDINBURGH TRAM NETWORK

Activity ID	Activity Name	Original Duration	Start	Finish	Duration % Complete	Rev 5c Start	Rev 5c Finish	2012											
								Jan	Feb	Mar	Apr	May	Jun	Jul	Aug	Sep	Oct	Nov	Dec
<b>Excavate</b>								25-Oct-12, Excavate											
1C-16-SAS2-238	Excavate to Formation for Carriageway and Track (ind for Capping/Type 1)	5	22-Feb-12 A	25-Oct-12	80%	23-Apr-12	27-Apr-12	Excavate to Formation											
1C-16-SAS2-238-D1	Service Investigations by T&T	0	24-Feb-12 A	08-Mar-12 A	100%			Service Investigations by T&T											
1C-16-SAS2-238-D2	Service Investigations by T&T	0	28-Feb-12 A	09-Mar-12 A	100%			Service Investigations by T&T											
1C-16-SAS2-238-D3	Design Change to OLE Bases	0	29-Feb-12 A	02-Mar-12 A	100%			Design Change to OLE Bases											
1C-16-SAS2-238-D4	T&T hand over north area of site to Crummock	0	09-Mar-12 A	15-Mar-12 A	100%			T&T hand over north area of site to Crummock											
1C-16-SAS2-238-D5	BBUK instruction to cease work on 9/03/12	0	09-Mar-12 A	15-Mar-12 A	100%			BBUK instruction to cease work on 9/03/12											
1C-16-SAS2-238-D6	BBUK instruction to commence track work	0	15-Mar-12 A	21-Mar-12 A	100%			BBUK instruction to commence track work											
1C-16-SAS2-238-D7	Excavation halted due to virgin media duct	0	23-Mar-12 A	28-Mar-12 A	100%			Excavation halted due to virgin media duct											
1C-16-SAS2-238-D8	T&T continue to occupy areas of site and compound	0	29-Mar-12 A	04-Jun-12 A	100%			T&T continue to occupy areas of site and compound											
1C-16-SAS2-238-D9	Work Stopped due to utilities conflicting with formation level	0	02-Apr-12 A	06-Jun-12 A	100%			Work Stopped due to utilities conflicting with formation level											
1C-16-SAS2-238-D10	VE Review	0	06-Jun-12 A	15-Oct-12	0%			VE Review											
1C-16-SAS2-238-D11	Service Investigations by T & T	0	22-Aug-12 A	15-Oct-12	0%			Service Investigations by T & T											
<b>Remove Kerbs</b>								31-Oct-12, Remove											
1C-16-SAS2-209-D1	Service Investigations by T&T	0	23-Feb-12 A	14-Mar-12 A	100%			Service Investigations by T&T											
1C-16-SAS2-209-D2	Awaiting VE Scope	0	15-Mar-12 A	15-Oct-12	0%			Awaiting VE Scope											
1C-16-SAS2-209	Remove existing kerbs to store.	5	24-Oct-12	31-Oct-12	0%	23-Apr-12	27-Apr-12	Remove existing kerbs											
<b>Suitability of Formation</b>								23-Feb-12 A, Suitability of Formation											
1C-16-SAS2-360-D1	removal of Existing Concrete Slab	0	20-Feb-12 A	23-Feb-12 A	100%			removal of Existing Concrete Slab											
1C-16-SAS2-360	Check suitability of formation (ongoing)	0	22-Feb-12 A		100%	23-Apr-12		Check suitability of formation (ongoing)											
<b>Capping Layer</b>								31-Oct-12, Capping											
1C-16-SAS2-241	Capping Layer to Adjacent Carriageway (600mm)	5	24-Oct-12	31-Oct-12	0%	23-Apr-12	27-Apr-12	Capping Layer to Adjacent Carriageway (600mm)											
<b>Make Good Formation</b>								01-Nov-12, Make G											
1C-16-SAS2-242-D3	Awaiting VE Scope	0	15-Mar-12 A	15-Oct-12	0%			Awaiting VE Scope											
1C-16-SAS2-242	Make good Formation with Type 1 (Ave 220mm)	2	22-Mar-12 A	01-Nov-12	75%	30-Apr-12	01-May-12	Make good Formation											
1C-16-SAS2-242-D1	Service Investigations by T&T	0	22-Mar-12 A	26-Mar-12 A	100%			Service Investigations by T&T											
1C-16-SAS2-242-D2	Out of Sequence Working	0	22-Mar-12 A	06-Jun-12 A	100%			Out of Sequence Working											
<b>OLE Foundations</b>								0%											
<b>Trackform</b>								01-Nov-12, Trackfo											
<b>Inspection &amp; Testing of Sub Grade</b>								01-Nov-12, Inspecti											
1C-16-SAS2-234	Carry out inspection and testing of Subgrade	1	21-Mar-12 A	01-Nov-12	75%	04-May-12	04-May-12	Carry out inspection											
1C-16-SAS2-234-D1	Service investigation by T&T	0	15-May-12 A	06-Jun-12 A	100%			Service investigation by T&T											
<b>Blinding</b>								15-Oct-12, Blinding											
1C-16-SAS2-215-D1	Service investigations by T&T	0	02-Mar-12 A	21-Mar-12 A	100%			Service investigations by T&T											
1C-16-SAS2-215-D2	T&T in possession of site to install drainage	0	02-Mar-12 A	08-May-12 A	100%			T&T in possession of site to install drainage											
1C-16-SAS2-215	Blinding Concrete	2	23-Mar-12 A	02-Oct-12 A	100%	08-May-12	09-May-12	Blinding Concrete											
1C-16-SAS2-215-D3	T&T occupying site	0	16-May-12 A	24-May-12 A	100%			T&T occupying site											
1C-16-SAS2-215-D4	Service Investigations by T & T	0	22-Aug-12 A	15-Oct-12	0%			Service Investigations by T & T											
<b>Place RC Improvement Slab</b>								01-Nov-12, Place R											
1C-16-SAS2-236	Place RC Improvement Slab (+ cure lag)	5	26-Mar-12 A	01-Nov-12	95%	10-May-12	16-May-12	Place RC Improvement Slab (+ cure lag)											
1C-16-SAS2-236-D1	Out of Sequence working	0	26-Mar-12 A	15-Oct-12	0%			Out of Sequence working											
1C-16-SAS2-236-D2	Site Occupied by T&T	0	11-Apr-12 A	24-May-12 A	100%			Site Occupied by T&T											
1C-16-SAS2-236-D3	Site Occupied by T&T	0	25-Apr-12 A	08-May-12 A	100%			Site Occupied by T&T											
1C-16-SAS2-236-D4	Site Handed back to CSL	0	08-May-12 A	08-May-12 A	100%			Site Handed back to CSL											
1C-16-SAS2-236-D5	Site Occupied bt T&T	0	08-May-12 A	25-May-12 A	100%			Site Occupied bt T&T											

Date	Revision	Checked	Approved	Date	Revision	Checked	Approved
02-Feb...	Revision 0	SCS/M...	BSC	28-Jun-11	Revision 3a	SCS/MHE	BSC
16-Feb...	Revision 1	SCS/M...	BSC	08-Sep-11	Revision 4	SCS	BSC
18-Feb...	Revision 2	SCS/M...	BSC	16-Feb-12	Revision 4c	SCS	BBS
06-Ma...	Revision 3	SCS/M...	BSC	21-Jun-12	Revision 5c	SCS	BBS
				25-Oct-12	Rev. 5c Progressed to 121013	SCS	BBS

- █ Remaining Level of Effort
- █ Critical Remaining Work
- Changed Works
- ◆ Rev 5c Milestone
- Revision 5c
- ◆ Milestone
- Actual Work
- ◆ Changed Works
- Remaining Work
- ▶ Summary











# EDINBURGH TRAM NETWORK

Activity ID	Activity Name	Original Duration	Start	Finish	Duration % Complete	Rev 5c Start	Rev 5c Finish	2012													
								Jan	Feb	Mar	Apr	May	Jun	Jul	Aug	Sep	Oct	Nov	Dec		
<b>St Andrews Sq. South</b>																					
1C-16-TRCK-190	Road works & Hardlandscaping	60	15-Feb-13	14-May-13	0%	05-Jun-12	27-Aug-12														
<b>South St Andrews / Waverley Junction St. Ch 1150 to 1370</b>																					
<b>Constraints / Procedures / Documentation / Approvals</b>																					
1C-16A-SAS-290	Request Permit to Commence Work	0	03-Oct-11 A		100%	31-Jan-12															
1C-16A-SAS-300	Request TTRO's	0	12-Dec-11 A		100%	24-Jan-12															
1C-16A-SAS-260	Prepare Method Statements & Risk Assessment	0	10-Jan-12 A		100%	10-Jan-12															
1C-16A-SAS-270	Stakeholder Notifications (including Traffic Management)	0	10-Jan-12 A		100%	10-Jan-12															
1C-16A-SAS-280	Apply for 3rd Party Licence	0	10-Jan-12 A		100%	10-Jan-12															
<b>Traffic Management</b>																					
1C-16A-SAS-135	Phase 1 - South-North St Andrew St Closed, Bus Lane Closed	0	07-Jan-12 A		100%	07-Feb-12															
1C-16A-SAS-156	Phase 2 - Bus Lane Reopen	0	07-Jan-13		0%	24-May-12															
<b>Phase 1 - Outbound Ch 1220 to 1370</b>																					
<b>Traffic Management &amp; Site Establishment</b>																					
1C-16A-SAS1-1010	Erect Pedestrian Barrier	1	07-Jan-12 A	07-Jan-12 A	100%	07-Feb-12	07-Feb-12														
1C-16A-SAS1-1020	Site Clearance & Site Compound	12	09-Jan-12 A	26-Apr-12 A	100%	07-Feb-12	22-Feb-12														
1C-16A-SAS1-1030	Investigate services / outfall positions / inlet-outlet positions / levels	4	02-Apr-12 A	02-Apr-12 A	100%	08-Feb-12	13-Feb-12														
<b>Excavation &amp; Track Construction</b>																					
<b>Excavation</b>																					
<b>Plane</b>																					
1C-16A-SAS1-1040	Plane Main Carriageway 250mm	4	09-Jan-12 A	30-Mar-12 A	100%	08-Feb-12	13-Feb-12														
1C-16A-SAS1-320-D1	Road Planned for TT Access	0	09-Jan-12 A	09-Jan-12 A	100%																
<b>Excavate</b>																					
1C-16A-SAS1-1050	Excavate to Formation for Carriageway and Track (incl for Capping/Type 1)	7	27-Mar-12 A	30-Mar-12 A	100%	14-Feb-12	22-Feb-12														
1C-16A-SAS1-198-D1	Service Investigations by T&T	0	16-Apr-12 A	30-Apr-12 A	100%																
1C-16A-SAS1-198-D2	Duct Track Conflict	0	04-May-12 A	01-Jun-12 A	100%																
1C-16A-SAS1-198-D3	Out of Sequence Working	0	09-Jun-12 A	15-Oct-12	0%																
1C-16A-SAS1-198-D4	Out of Sequence Working	0	09-Jun-12 A	15-Oct-12	0%																
1C-16A-SAS1-198-D5	Utility Conflict	0	21-Aug-12 A	03-Sep-12 A	100%																
<b>Remove Kerbs</b>																					
1C-16A-SAS1-199-D1	Service Investigations by T&T	0	16-Apr-12 A	30-Apr-12 A	100%																
1C-16A-SAS1-199-D2	Duct Track Conflict	0	04-May-12 A	01-Jun-12 A	100%																
1C-16A-SAS1-199-D3	Out of Sequence Working	0	09-Jun-12 A	15-Oct-12	0%																
1C-16A-SAS1-1060	Remove existing kerbs to store.	7	15-Oct-12	23-Oct-12	0%	14-Feb-12	22-Feb-12														
<b>Suitability of Formation</b>																					
1C-16A-SAS1-1070	Check suitability of formation (ongoing)	0	02-Apr-12 A		100%	14-Feb-12															
1C-16A-SAS1-330-D1	Service Investigations by T&T	0	16-Apr-12 A	30-Apr-12 A	100%																
1C-16A-SAS1-330-D2	Duct Track Conflict	0	04-May-12 A	01-Jun-12 A	100%																
1C-16A-SAS1-330-D3	Out of Sequence Working	0	09-Jun-12 A	15-Oct-12	0%																
1C-16A-SAS1-330-D4	Out of Sequence Working	0	09-Jun-12 A	15-Oct-12	0%																
1C-16A-SAS1-330-D5	Utility Conflict	0	21-Aug-12 A	03-Sep-12 A	100%																
<b>Capping Layer</b>																					
1C-16A-SAS1-1080	Capping Layer to Adjacent Carriageway (600mm)	7	02-Apr-12 A	02-Apr-12 A	100%	14-Feb-12	22-Feb-12														

Date	Revision	Checked	Approved	Date	Revision	Checked	Approved
02-Feb...	Revision 0	SCS/M...	BSC	28-Jun-11	Revision 3a	SCS/MHE	BSC
16-Feb...	Revision 1	SCS/M...	BSC	08-Sep-11	Revision 4	SCS	BSC
18-Feb...	Revision 2	SCS/M...	BSC	16-Feb-12	Revision 4c	SCS	BBS
06-Ma...	Revision 3	SCS/M...	BSC	25-Oct-12	Rev. 5c Progressed to 121013	SCS	BBS

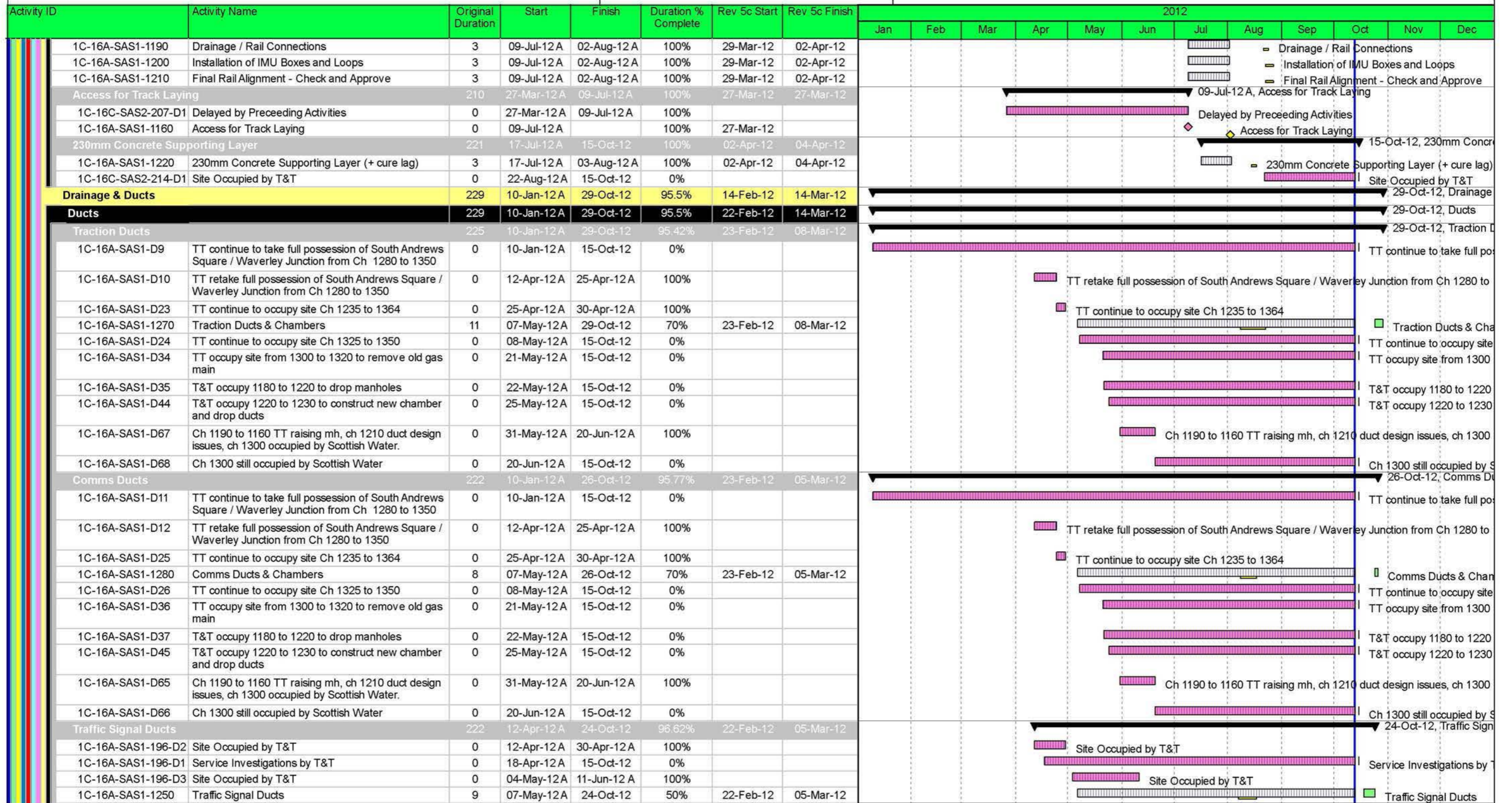
- █ Remaining Level of Effort
- █ Critical Remaining Work
- █ Changed Works
- █ Revision 5c
- █ Actual Work
- █ Remaining Work
- ◆ Rev 5c Milestone
- ◆ Milestone
- ◆ Changed Works
- ▶ Summary







# EDINBURGH TRAM NETWORK



Date	Revision	Checked	Approved	Date	Revision	Checked	Approved
02-Feb...	Revision 0	SCS/M...	BSC	28-Jun-11	Revision 3a	SCS/MHE	BSC
16-Feb...	Revision 1	SCS/M...	BSC	08-Sep-11	Revision 4	SCS	BSC
18-Feb...	Revision 2	SCS/M...	BSC	16-Feb-12	Revision 4c	SCS	BBS
06-Ma...	Revision 3	SCS/M...	BSC	21-Jun-12	Revision 5c	SCS	BBS
				25-Oct-12	Rev. 5c Progressed to 121013	SCS	BBS

- Remaining Level of Effort
- Changed Works
- Revision 5c
- Actual Work
- Remaining Work
- Critical Remaining Work
- Rev 5c Milestone
- Milestone
- Changed Works
- Summary























# EDINBURGH TRAM NETWORK

Activity ID	Activity Name	Original Duration	Start	Finish	Duration % Complete	Rev 5c Start	Rev 5c Finish	2012											
								Jan	Feb	Mar	Apr	May	Jun	Jul	Aug	Sep	Oct	Nov	Dec
<b>Sub base</b>								25-Oct-12, Sub base											
1C-16A-SAS2-1310-D1	Service Investigations by T&T	0	20-Feb-12 A	15-Oct-12	0%	07-Jun-12	12-Jun-12	Service Investigations by T&T											
1C-16A-SAS2-1310	Sub-base 220mm all carriageway areas (bituminous and setts)	4	20-Aug-12 A	25-Oct-12	20%	07-Jun-12	12-Jun-12	Sub-base 220mm all c											
<b>Kerbing</b>								06-Nov-12, Kerbir											
1C-16A-SAS2-1320-D1	Service Investigations by T&T	0	03-Apr-12 A	15-Oct-12	0%	18-Jul-12	31-Jul-12	Service Investigations by T											
1C-16A-SAS2-1320	Kerbing	10	13-Aug-12 A	06-Nov-12	25%	18-Jul-12	31-Jul-12	Kerbing											
<b>Gullies</b>								07-Nov-12, Gulle											
1C-16A-SAS2-1340	Gullies	8	11-Jun-12 A	07-Nov-12	30%	23-Jul-12	01-Aug-12	Gullies											
<b>Sub base shape to all areas</b>								07-Nov-12, Sub B											
1C-16A-SAS2-1350-D1	Service Investigations by T&T	0	18-Apr-12 A	15-Oct-12	0%			Service Investigations by T											
1C-16A-SAS2-1350	Sub-base shape all carriageway areas	4	20-Aug-12 A	07-Nov-12	20%	27-Jul-12	01-Aug-12	Sub-base shape a											
<b>traffic signals</b>								12-Nov-12, traf											
1C-16A-SAS2-1360-D1	Service Investigations by T&T	0	18-Apr-12 A	15-Oct-12	0%			Service Investigations by T											
1C-16A-SAS2-1360	Traffic Signals	4	06-Nov-12	12-Nov-12	0%	01-Aug-12	06-Aug-12	Traffic Signals											
<b>Setts</b>								26-Nov-12											
1C-16A-SAS2-1380-D1	Service Investigations by T&T	0	19-Apr-12 A	15-Oct-12	0%			Service Investigations by T											
1C-16A-SAS2-1380	Setts	13	07-Nov-12	26-Nov-12	0%	02-Aug-12	20-Aug-12	Setts											
<b>225 Base</b>								16-Nov-12, 22											
1C-16A-SAS2-1390-D1	Service Investigations by T&T	0	25-Apr-12 A	15-Oct-12	0%			Service Investigations by T											
1C-16A-SAS2-1390	225mm Base	3	20-Aug-12 A	16-Nov-12	10%	08-Aug-12	10-Aug-12	225mm Base											
<b>60 Binder</b>								19-Nov-12, 6											
1C-16A-SAS2-1400-D1	Service Investigations by T&T	0	27-Apr-12 A	15-Oct-12	0%			Service Investigations by T											
1C-16A-SAS2-1400	60mm Binder	2	20-Aug-12 A	19-Nov-12	10%	13-Aug-12	14-Aug-12	60mm Binder											
<b>35 Wearing Course</b>								21-Nov-12,											
1C-16A-SAS2-1410	35mm Wearing Course	2	20-Aug-12 A	21-Nov-12	0%	15-Aug-12	16-Aug-12	35mm Wear											
<b>Traffic Signals &amp; OHLE</b>								07-De											
1C-16A-SAS2-1440	OLE Wall Fixings (16nr) South-North St Andrew St	16	15-Oct-12	05-Nov-12	0%	31-Mar-11	21-Apr-11	OLE Wall Fixings (											
1C-16B-JNC2-60	installation of traffic light control - Junction 30	8	26-Oct-12	06-Nov-12	0%	19-Jul-12	30-Jul-12	installation of traffi											
1C-16C-JNCS-60	installation of traffic light control - Junction 31	14	07-Nov-12	26-Nov-12	0%	31-Jul-12	20-Aug-12	installation											
1C-16A-JNCS-60	installation of traffic light control - Junction 32	8	27-Nov-12	07-Dec-12	0%	21-Aug-12	30-Aug-12	installa											
<b>Commissioning and Testing</b>																			
1C-16A-SAS-2000	Commissioning and Testing	5	03-Jan-13	10-Jan-13	0%	27-Aug-12	31-Aug-12												
<b>St Andrews Square Tram Stop</b>								23-Aug-12											
1C-16-TRMS-90	Civil Engineering And Building Works	65	13-Mar-12 A	28-Jan-13	25%	13-Mar-12	14-Jun-12												
1C-16-TRMS-20	Order REC Supply	0	15-Oct-12		0%	27-Mar-12		Order REC Supply											
1C-16-TRMS-40	Deliver and Install Shelter	10	20-Nov-12	07-Jan-13	0%	10-May-12	23-May-12	Access for v											
1C-16-TRMS-30	Access for visual inspection for E&M Tram Stop installation (01C St. Andrews Square)	0	22-Nov-12		0%	23-Apr-12													
1C-16-TRMS-31	Access for E&M Tram Stop installation (01C St. Andrews Square)	0	07-Jan-13		0%	24-May-12													
1C-16-TRMS-45	Deliver and Install cubicle	10	07-Jan-13	21-Jan-13	0%	24-May-12	07-Jun-12												
1C-16-TRMS-50	Install LV Power Supply and LV Power Equipment	25	21-Jan-13	25-Feb-13	0%	08-Jun-12	12-Jul-12												
1C-16-TRMS-70	Install Telecon Equipment	20	25-Feb-13	25-Mar-13	0%	13-Jul-12	09-Aug-12												
1C-16-TRMS-60	Install Station Control Equipment + AFC Equipment	25	25-Feb-13	02-Apr-13	0%	13-Jul-12	16-Aug-12												
1C-16-TRMS-80	Package Test Tramstop	5	02-Apr-13	09-Apr-13	0%	16-Aug-12	23-Aug-12												
<b>01D Princes Street (inc.) to Haymarket (exc.)</b>								08-Aug-13											

Date	Revision	Checked	Approved	Date	Revision	Checked	Approved
02-Feb...	Revision 0	SCS/M...	BSC	28-Jun-11	Revision 3a	SCS/MHE	BSC
16-Feb...	Revision 1	SCS/M...	BSC	08-Sep-11	Revision 4	SCS	BSC
18-Feb...	Revision 2	SCS/M...	BSC	16-Feb-12	Revision 4c	SCS	BBS
06-Ma...	Revision 3	SCS/M...	BSC	21-Jun-12	Revision 5c	SCS	BBS
				25-Oct-12	Rev. 5c Progressed to 121013	SCS	BBS

- Remaining Level of Effort
- Critical Remaining Work
- Changed Works
- Revision 5c
- Remaining Work
- Rev 5c Milestone
- Milestone
- Changed Works
- Summary



Activity ID	Activity Name	Original Duration	Start	Finish	Duration % Complete	Rev 5c Start	Rev 5c Finish	2012														
								Jan	Feb	Mar	Apr	May	Jun	Jul	Aug	Sep	Oct	Nov	Dec			
<b>E &amp; M Installation</b>		199	23-Jan-13	29-Oct-13	0%	07-Sep-12	25-Jul-13															
<b>Access</b>		176	23-Jan-13	26-Sep-13	0%	07-Sep-12	25-Jun-13															
1D-15-OHLE-30	Access for visual inspection for E&M wayside installation PST - SHP	0	23-Jan-13		0%	07-Sep-12																
1D-15-OHLE-31	Access for E&M wayside installation PST - SHP	0	22-Feb-13		0%	09-Oct-12																
1D-14-OHLE-30	Access for visual inspection for E&M wayside installation SHP - HAY	0	16-Jul-13		0%	10-Apr-13																
1D-14-ELEC-30	Access for visual inspection to cable pits for cable laying SHP - HAY	0	16-Jul-13		0%	10-Apr-13																
1D-14-OHLE-31	Access for E&M wayside installation SHP - HAY	0	15-Aug-13		0%	13-May-13																
1D-14-ELEC-31	Access to cable pits for cable laying SHP - HAY	0	15-Aug-13		0%	13-May-13																
1D-15-ELEC-30	Access for visual inspection to cable pits for cable laying PST - SHP	0	27-Aug-13		0%	23-May-13																
1D-15-ELEC-31	Access to cable pits for cable laying PST - SHP	0	26-Sep-13		0%	25-Jun-13																
<b>OLE &amp; TPS</b>		53	15-Aug-13	29-Oct-13	0%	13-May-13	25-Jul-13															
1D-14/15-OHLE-50(3)	Installation of poles and building fixings -10 (13 0037 - 20 0022)	10	15-Aug-13	29-Aug-13	0%	13-May-13	24-May-13															
1D-14/15-OHLE-60(3)	Overhead Catenary Line -10 (13 0037 - 20 0022 + 13 0731 - 13 0810)	22	29-Aug-13	30-Sep-13	0%	28-May-13	26-Jun-13															
1D-13//17-ELEC-60	Install Electrical Cables CAE - HTE	23	26-Sep-13	29-Oct-13	0%	25-Jun-13	25-Jul-13															
<b>Communications</b>		15	26-Sep-13	17-Oct-13	0%	25-Jun-13	15-Jul-13															
1D-14/15-TELC-70	Install Fibre Optic Cables PST - SHP - HAY	8	26-Sep-13	08-Oct-13	0%	25-Jun-13	04-Jul-13															
1D-15/16-TELC-60	Install Fibre Optic Cables SAS - PST - SHP	7	08-Oct-13	17-Oct-13	0%	05-Jul-13	15-Jul-13															
<b>Signalling</b>		35	29-Aug-13	17-Oct-13	0%	28-May-13	15-Jul-13															
1D-14-SIGN-40	Installation of SIG-interlocking cubicle SHP	15	29-Aug-13	19-Sep-13	0%	28-May-13	17-Jun-13															
1D-14-SIGN-90	installation of SIG equipment on crossover SHP	5	12-Sep-13	19-Sep-13	0%	11-Jun-13	17-Jun-13															
1D-14-SIGN-80	Commissioning of SIG -interlocking cubicle SHP	5	19-Sep-13	26-Sep-13	0%	18-Jun-13	24-Jun-13															
1D-15-SGNW-60	Install Signalling Wayside Equipment PST - SHP	9	26-Sep-13	09-Oct-13	0%	25-Jun-13	05-Jul-13															
1D-14-SGNW-60	Install Signalling Wayside Equipment SHP - HAY	6	09-Oct-13	17-Oct-13	0%	08-Jul-13	15-Jul-13															
<b>Testing &amp; Commissioning</b>		0			0%																	
<b>Shandwick Place / Haymarket Junction (Sections 1D Ch.130,380 to 2A Ch.20</b>		551	31-Mar-11 A	12-Nov-13	49%	31-Mar-11	08-Aug-13															
<b>MUDFA &amp; Utilities Completions</b>		0	15-Oct-12	15-Oct-12	0%	31-Aug-11	31-Aug-11															
<b>Utilities</b>		0	15-Oct-12	15-Oct-12	0%	31-Aug-11	31-Aug-11															
1D-14-1065	Utility completion Haymarket Junction	0		15-Oct-12*	0%		31-Aug-11															
1D-15-1075	Utility completion Shandwick Place area	0		15-Oct-12*	0%		31-Aug-11															
<b>Traffic Management</b>		41	22-Sep-11 A	13-Jan-12 A	100%	03-Oct-11	06-Mar-12															
1D-14-1055	Enabling Works - Haymarket Junction	7	22-Sep-11 A	28-Sep-11 A	100%	03-Oct-11	12-Oct-11															
1D-14-H1-928	TM Phase H1 - (Main Area - Eastbound Side)	2	30-Sep-11 A	02-Oct-11 A	100%	10-Oct-11	12-Oct-11															
1D-15-1016	Enabling Works - Shandwick Place	19	19-Dec-11 A	12-Jan-12 A	100%	07-Feb-12	02-Mar-12															
1D-15-SP1-935	TM Phase Ch.130,960 - 130,380 (Palmerston Place - Princes Street)	2	12-Jan-12 A	13-Jan-12 A	100%	05-Mar-12	06-Mar-12															
<b>Phases SP1,2,3,4,5,6,7. Ch.130,960 - 130,380 (Palmerston Place - Princes S</b>		520	31-Mar-11 A	10-Oct-13	50.4%	10-Jan-12	08-Jul-13															
<b>Constraints / Procedures / Documentation / Approvals</b>		15	03-Oct-11 A	06-Jan-12 A	100%	10-Jan-12	31-Jan-12															
1D-14-SP-90	Request Permit to Commence Work	0	03-Oct-11 A		100%	31-Jan-12																
1D-14-SP-80	Apply for 3rd Party Licence	0	06-Dec-11 A		100%	10-Jan-12																
1D-14-SP-60	Prepare Method Statements & Risk Assessment	0	06-Jan-12 A		100%	10-Jan-12																

Date	Revision	Checked	Approved	Date	Revision	Checked	Approved
02-Feb...	Revision 0	SCS/M...	BSC	28-Jun-11	Revision 3a	SCS/MHE	BSC
16-Feb...	Revision 1	SCS/M...	BSC	08-Sep-11	Revision 4	SCS	BSC
18-Feb...	Revision 2	SCS/M...	BSC	16-Feb-12	Revision 4c	SCS	BBS
06-Ma...	Revision 3	SCS/M...	BSC	21-Jun-12	Revision 5c	SCS	BBS
				25-Oct-12	Rev. 5c Progressed to 121013	SCS	BBS

█ Remaining Level of Effort     █ Critical Remaining Work  
 Changed Works     ◆ Rev 5c Milestone  
 Revision 5c     ◆ Milestone  
 Actual Work     ◆ Changed Works  
 Remaining Work      Summary







**EDINBURGH TRAM NETWORK**

Activity ID	Activity Name	Original Duration	Start	Finish	Duration % Complete	Rev 5c Start	Rev 5c Finish	2012														
								Jan	Feb	Mar	Apr	May	Jun	Jul	Aug	Sep	Oct	Nov	Dec			
1D-140-SP1-820	Make good Formation with Type 1 (Ave 220mm)	2	13-Apr-12 A	16-Jul-12 A	100%	13-Apr-12	16-Apr-12															
<b>OLE Foundations</b>		83	24-Feb-12 A	24-Oct-12	92.81%	20-Mar-12	08-Jun-12															
1D-140-SP1-514	Core/Cast OLE Pole Foundations	5	24-Feb-12 A	23-Mar-12 A	100%	20-Mar-12	26-Mar-12															
1D-140-SP1-655	OLE Wall Fixings Inbound	6	16-Oct-12	24-Oct-12	0%	01-Jun-12	08-Jun-12															
<b>Trackform</b>		13	15-Jun-12 A	27-Jun-12 A	100%	19-Apr-12	08-May-12															
1D-140-SP1-512	Carry out inspection and testing of Subgrade	1	15-Jun-12 A	19-Jun-12 A	100%	19-Apr-12	19-Apr-12															
1D-140-SP1-513	Blinding Concrete	4	18-Jun-12 A	25-Jun-12 A	100%	20-Apr-12	25-Apr-12															
1D-140-SP1-654	250mm RC Improvement Slab (+ cure lag)	8	19-Jun-12 A	27-Jun-12 A	100%	26-Apr-12	08-May-12															
<b>Inspection &amp; Testing of Sub Grade</b>		0			0%																	
<b>Blinding</b>		0			0%																	
<b>Place RC Improvement Slab</b>		0			0%																	
<b>Track Laying</b>		65	31-Mar-11 A	01-Nov-12	90.7%	11-May-12	05-Jul-12															
1D-140-SP1-596	Installation of Noise & Vibration Mat (if reqd)	0	31-Mar-11 A		100%	11-May-12																
1D-140-SP1-665	Access for Track Laying	0	11-Jul-12 A		100%	11-May-12																
1D-140-TRCK-70(3)	Set track (1x288m)(sleepers/rail) + mob	14	11-Jul-12 A	01-Aug-12 A	100%	11-May-12	31-May-12															
1D-140-SP1-508	Welding & Grinding	8	11-Jul-12 A	01-Aug-12 A	100%	14-May-12	23-May-12															
1D-140-SP1-499	Drainage / Rail Connections	8	11-Jul-12 A	01-Aug-12 A	100%	14-May-12	23-May-12															
1D-140-SP1-830	Installation of IMU Boxes and Loops	8	11-Jul-12 A	01-Aug-12 A	100%	14-May-12	23-May-12															
1D-140-SP1-521	Final Rail Alignment - Check and Approve	8	11-Jul-12 A	01-Aug-12 A	100%	15-May-12	24-May-12															
1D-140-SP1-522	230mm Concrete Supporting Layer (+ cure lag)	10	06-Aug-12 A	20-Aug-12 A	100%	17-May-12	31-May-12															
1D-140-SP1-523	Mill Rail Joint / Sealing Compound	6	24-Oct-12	01-Nov-12	0%	28-Jun-12	05-Jul-12															
<b>Drainage &amp; Ducts</b>		269	02-Mar-12 A	23-Oct-12	97.62%	16-Mar-12	14-Jun-12															
<b>Ducts</b>		269	23-Mar-12 A	23-Oct-12	97.62%	13-Apr-12	14-Jun-12															
<b>Traction Ducts</b>		0	16-Oct-12	16-Oct-12	0%	13-Apr-12	13-Apr-12															
1D-140-SP1-690	Traction Ducts & Chambers	0	16-Oct-12		0%	13-Apr-12																
<b>Comms Ducts</b>		219	24-Mar-12 A	22-Jun-12 A	100%	13-Apr-12	08-May-12															
1D-140-SP1-D16	TT take possession of site to resolve drainage issues	0	24-Mar-12 A	11-May-12 A	100%																	
1D-140-SP1-491	Comms Ducts & Chambers	17	02-May-12 A	22-Jun-12 A	100%	13-Apr-12	08-May-12															
1D-140-SP1-D17	TT working to resolve comm ducts conflicts	0	17-May-12 A	11-Jun-12 A	100%																	
1D-140-SP1-D18	TT take possession of SP1	0	18-May-12 A	11-Jun-12 A	100%																	
<b>Traffic Signal Ducts</b>		207	23-Mar-12 A	18-Oct-12	98.21%	16-Apr-12	19-Apr-12															
1D-140-SP1-D28	Out of Sequence Working	0	23-Mar-12 A	15-Oct-12	0%																	
1D-140-SP1-492	Traffic Signal Ducts	4	23-May-12 A	18-Oct-12	50%	16-Apr-12	19-Apr-12															
1D-140-SP1-D30	Traffic Signal Ducting to be extended by Lagan	0	19-Jul-12 A	27-Aug-12 A	100%																	
1D-140-SP1-D31	TT to install ducting in footpath	0	28-Aug-12 A	15-Oct-12	0%																	
1D-140-SP1-492-D5	tNC 682 issued	0	10-Sep-12 A	10-Sep-12 A	100%																	
<b>Lighting Ducts</b>		269	10-Sep-12 A	23-Oct-12	99.26%	13-Jun-12	14-Jun-12															
1D-140-SP1-483-D1	tNC 682 issued	0	10-Sep-12 A	10-Sep-12 A	100%																	
1D-140-SP1-483	Lighting Ducts	2	19-Oct-12	23-Oct-12	0%	13-Jun-12	14-Jun-12															
<b>Installation of IMU Drains and Cable Ducting</b>		2	01-May-12 A	21-Jun-12 A	100%	17-Apr-12	18-Apr-12															
1D-140-SP1-511	Installation of IMU Drains and Cable Ducting	2	01-May-12 A	21-Jun-12 A	100%	17-Apr-12	18-Apr-12															
<b>Drains</b>		267	02-Mar-12 A	19-Oct-12	98.61%	16-Mar-12	18-Apr-12															
<b>Outfall Connections</b>		189	02-Mar-12 A	27-Aug-12 A	100%	16-Mar-12	22-Mar-12															
1D-140-SP1-D13	TT working on drainage and services in the area of Stafford Street	0	02-Mar-12 A	11-May-12 A	100%																	

Date	Revision	Checked	Approved	Date	Revision	Checked	Approved
02-Feb...	Revision 0	SCS/M...	BSC	28-Jun-11	Revision 3a	SCS/MHE	BSC
16-Feb...	Revision 1	SCS/M...	BSC	08-Sep-11	Revision 4	SCS	BSC
18-Feb...	Revision 2	SCS/M...	BSC	16-Feb-12	Revision 4c	SCS	BBS
06-Ma...	Revision 3	SCS/M...	BSC	21-Jun-12	Revision 5c	SCS	BBS
				25-Oct-12	Rev. 5c Progressed to 121013	SCS	BBS

- Remaining Level of Effort
- Changed Works
- Revision 5c
- Actual Work
- Remaining Work
- Critical Remaining Work
- Rev 5c Milestone
- Milestone
- Changed Works
- Summary







