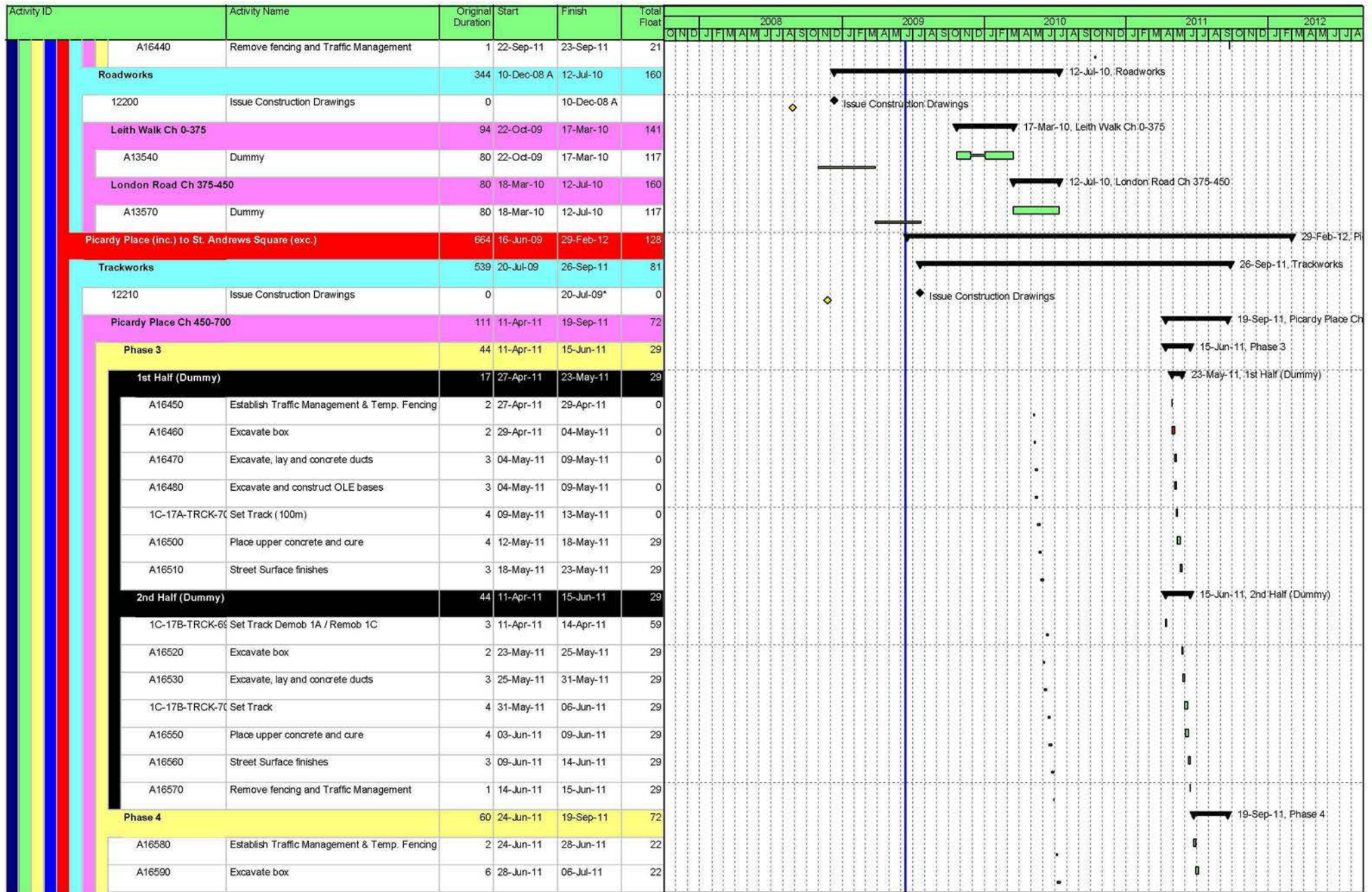


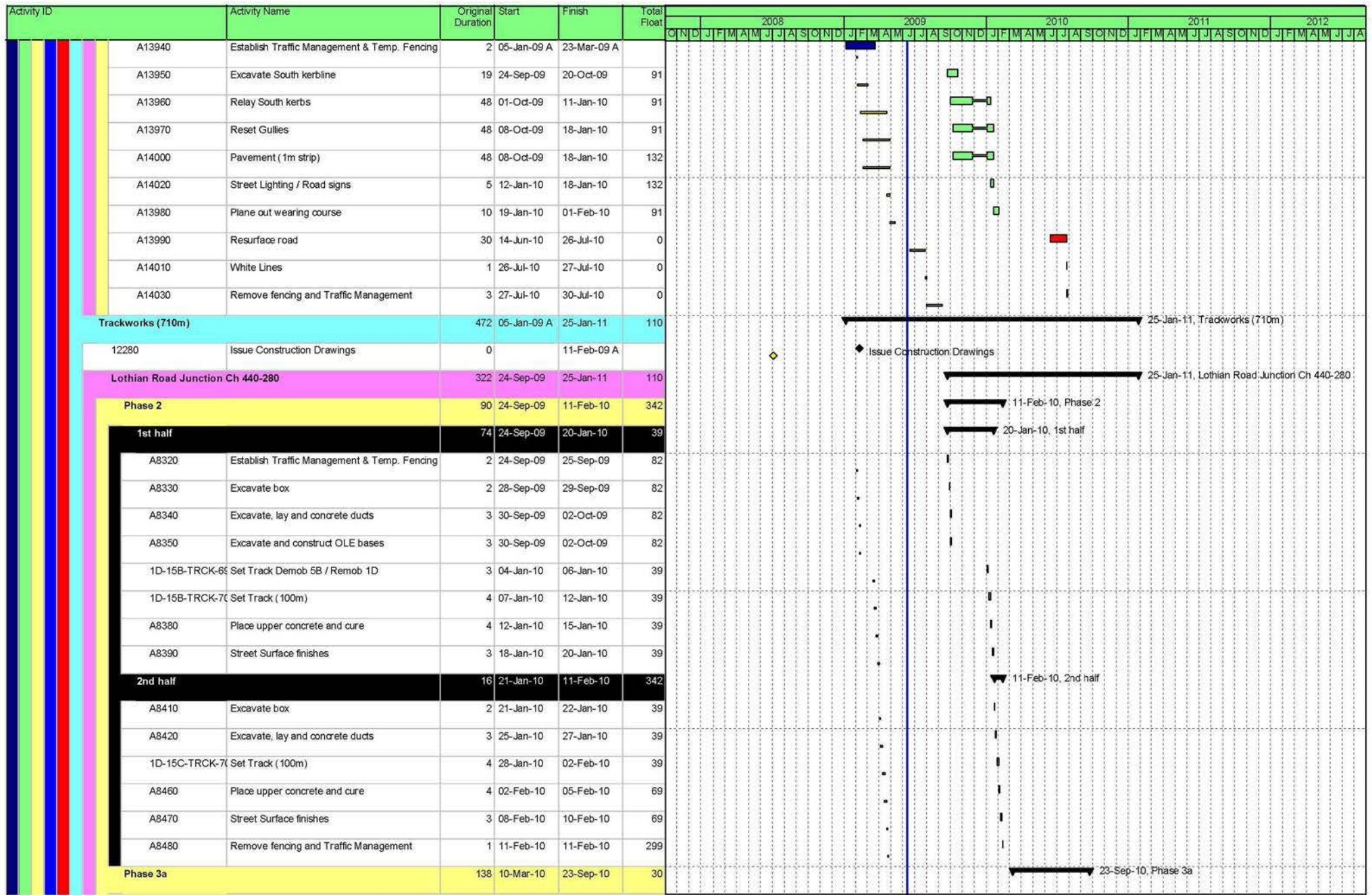
Activity ID	Activity Name	Original Duration	Start	Finish	Total Float	2008												2009												2010												2011												2012																											
						O	N	D	J	F	M	A	M	J	J	A	S	O	N	D	J	F	M	A	M	J	J	A	S	O	N	D	J	F	M	A	M	J	J	A	S	O	N	D	J	F	M	A	M	J	J	A	S	O	N	D	J	F	M	A	M	J	J	A	S	O	N	D	J	F	M	A	M	J	J	A	S	O	N	D	
Leith Walk Ch 0-375						139	26-Nov-10	30-Jun-11	13																																																																								
1st Half (Dummy)						58	26-Nov-10	03-Mar-11	42																																																																								
A16190	Establish Traffic Management & Temp. Fencing	2	26-Nov-10	30-Nov-10	45																																																																												
A16200	Excavate box	8	30-Nov-10	19-Jan-11	45																																																																												
A16210	Excavate, lay and concrete ducts	11	19-Jan-11	03-Feb-11	45																																																																												
A16220	Excavate and construct OLE bases	11	19-Jan-11	03-Feb-11	45																																																																												
1C-18A-TRCK-70	Set Track (375m)	14	03-Feb-11	23-Feb-11	42																																																																												
A16240	Place upper concrete and cure	14	08-Feb-11	28-Feb-11	42																																																																												
A16250	Street Surface finishes	3	28-Feb-11	03-Mar-11	42																																																																												
2nd Half (Dummy)						81	03-Mar-11	30-Jun-11	13																																																																								
A16330	Excavate box	8	03-Mar-11	15-Mar-11	42																																																																												
A16340	Excavate, lay and concrete ducts	11	15-Mar-11	30-Mar-11	42																																																																												
1C-18B-TRCK-70	Set Track (375m)	14	01-Jun-11	21-Jun-11	1																																																																												
A16360	Place upper concrete and cure	14	06-Jun-11	24-Jun-11	13																																																																												
A16370	Street Surface finishes	3	24-Jun-11	29-Jun-11	13																																																																												
A16380	Remove fencing and Traffic Management	1	29-Jun-11	30-Jun-11	13																																																																												
London Road Ch 375-450						60	30-Jun-11	23-Sep-11	21																																																																								
1st Half (Dummy)						17	30-Jun-11	25-Jul-11	48																																																																								
A16260	Establish Traffic Management & Temp. Fencing	2	30-Jun-11	04-Jul-11	13																																																																												
A16270	Excavate box	2	04-Jul-11	06-Jul-11	13																																																																												
A16280	Excavate, lay and concrete ducts	3	06-Jul-11	11-Jul-11	13																																																																												
A16290	Excavate and construct OLE bases	3	06-Jul-11	11-Jul-11	13																																																																												
1C-18C-TRCK-70	Set Track (300m)	4	11-Jul-11	15-Jul-11	13																																																																												
A16310	Place upper concrete and cure	4	14-Jul-11	20-Jul-11	29																																																																												
A16320	Street Surface finishes	3	20-Jul-11	25-Jul-11	29																																																																												
2nd Half (Dummy)						43	25-Jul-11	23-Sep-11	21																																																																								
A16390	Excavate box	2	25-Jul-11	27-Jul-11	29																																																																												
A16400	Excavate, lay and concrete ducts	3	27-Jul-11	01-Aug-11	29																																																																												
1C-18D-TRCK-70	Set Track	4	08-Sep-11	14-Sep-11	21																																																																												
A16420	Place upper concrete and cure	4	13-Sep-11	19-Sep-11	21																																																																												
A16430	Street Surface finishes	3	19-Sep-11	22-Sep-11	21																																																																												

Date	Revision	Checked	Approved
05-Jun-09		scs/mh	

— Rev 1 Baseline ■ Remaining Work ◆ Rev 1 Baseline Milestone ◆ Milestone
 ■ Actual Work ■ Critical Remaining Work ◆ Milestone Summary



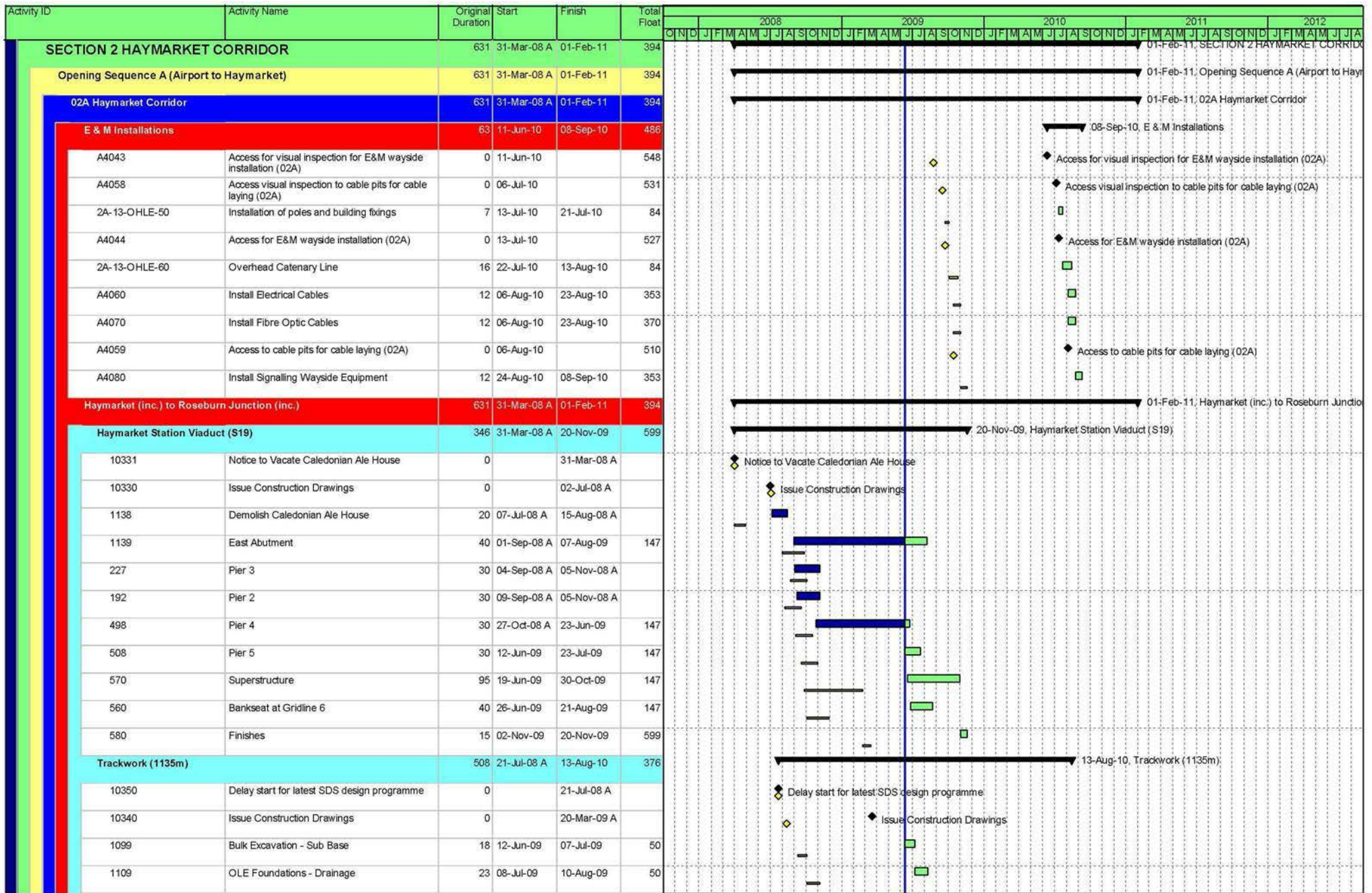
Date	Revision	Checked	Approved	Page 22 of 61	
05-Jun-09		scs/mh			



Date	Revision	Checked	Approved
05-Jun-09		scs/mh	

Rev 1 Baseline
 Remaining Work
 Rev 1 Baseline Milestone
 Milestone
 Summary

Actual Work
 Critical Remaining Work
 Milestone



Date	Revision	Checked	Approved
05-Jun-09		scs/mh	

■ Rev 1 Baseline
 ■ Remaining Work
 ◆ Rev 1 Baseline Milestone
 ◆ Milestone
 ▬ Summary
■ Actual Work
 ■ Critical Remaining Work
 ◆ Milestone

CEC00624393_0085



Date	Revision	Checked	Approved
05-Jun-09		scs/mh	

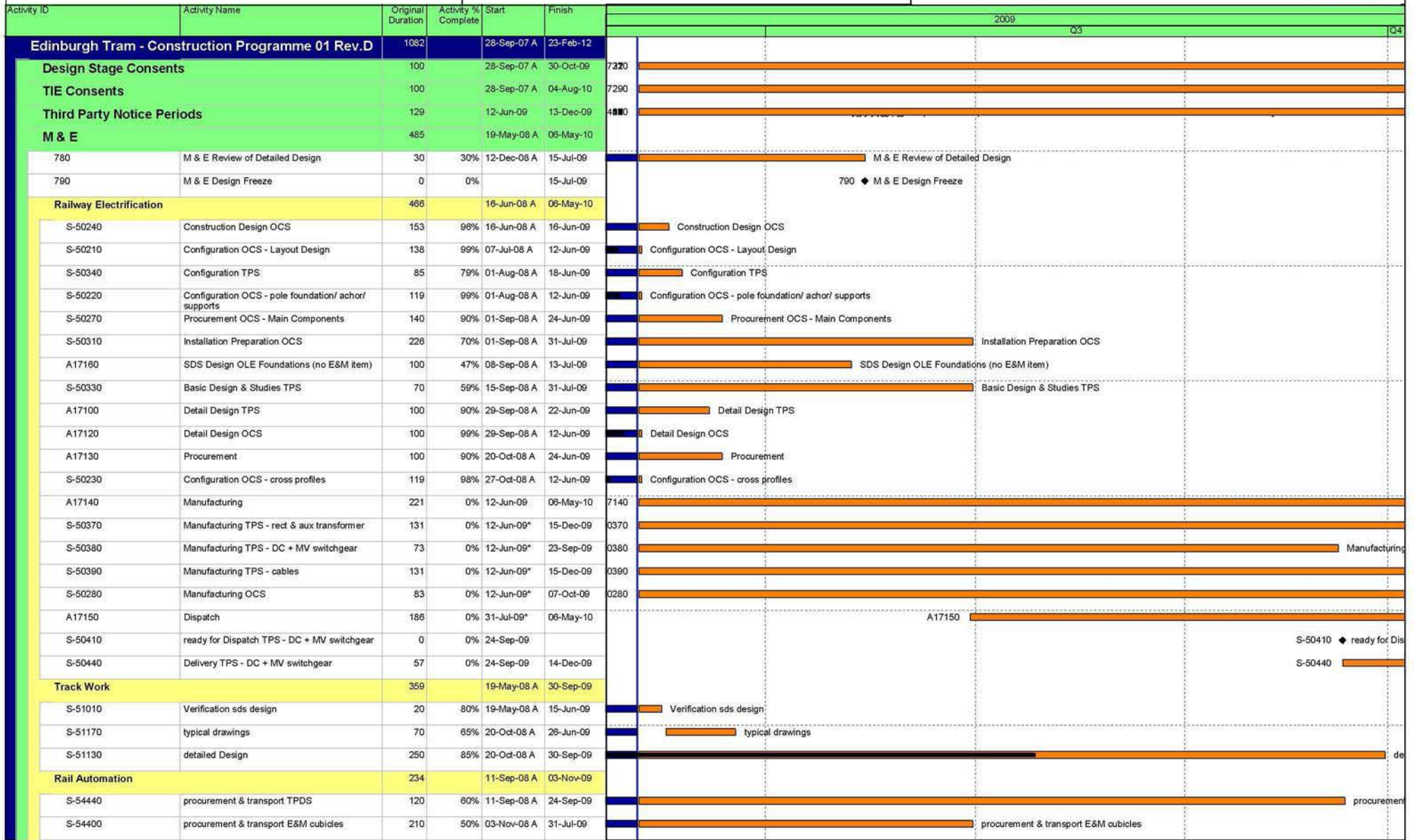


10.3 Look Ahead Programme

Three Month Look Ahead Programme

June 2009 - September 2009

EDINBURGH TRAM NETWORK



Date	Revision	Chec...	Approved
12-Jun-09	Construction Programme Updated V45 & Progress	JAC	

■ Actual Work ◆ Milestone
■ Normal ■ % Complete

CEC00624393_0109

Three Month Look Ahead Programme

June 2009 - September 2009

EDINBURGH TRAM NETWORK



Activity ID	Activity Name	Original Duration	Activity % Complete	Start	Finish	2009			
						Q3			Q4
S-54420	procurement & transport fibre optic	120	50%	03-Nov-08 A	23-Oct-09	[Gantt bar]			
S-54430	procurement & transport PABX	120	45%	10-Nov-08 A	03-Nov-09	[Gantt bar]			
S-54450	procurement & transport UPS	120	65%	10-Nov-08 A	13-Aug-09	[Gantt bar] procurement & transport UPS			
S-54410	procurement & transport radio system	218	50%	24-Nov-08 A	14-Oct-09	[Gantt bar]			
Workshop Equipment		381		19-Sep-08 A	15-Mar-10				
S-53000	detail design DWE	70	90%	19-Sep-08 A	09-Jul-09	[Gantt bar] detail design DWE			
S-53310	ordering DWE	170	28%	20-Oct-08 A	02-Jul-09	[Gantt bar] ordering DWE			
S-53010	Approval detail design DWE	129	40%	24-Oct-08 A	31-Aug-09	[Gantt bar] Approval detail design DWE			
S-53220	manufacture DWE	242	30.99%	09-Mar-09 A	17-Feb-10	[Gantt bar]			
S-53320	transport DWE	120	0%	14-Sep-09*	15-Mar-10	[Gantt bar] S-53320			
S-53410	storage for DWE available	0	0%	14-Sep-09*		[Gantt bar] S-53410 ◆ storage for DWE available			
SECTION 01 NEWHAVEN ROAD TO HAYMARKET		1082		28-Sep-07 A	23-Feb-12				
1	SECTION 01 NEWHAVEN ROAD TO HAYMARKET	1611	38.74%	28-Sep-07 A	23-Feb-12	[Gantt bar]			
01A Newhaven Road (inc.) to Foot of the Walk (exc.)		1080		28-Sep-07 A	21-Feb-12				
3	01A Newhaven Road (inc.) to Foot of the Walk (exc.)	1609	38.78%	28-Sep-07 A	21-Feb-12	[Gantt bar]			
Design Stage Consents		100		28-Sep-07 A	12-Jun-09				
A17200	Forth Ports Agreement	100	99%	28-Sep-07 A	12-Jun-09	[Gantt bar] Forth Ports Agreement			
MUDFA & Utilities Completion Dates		0		12-Jun-09	12-Jun-09	[Gantt bar] MUDFA & Utilities Completion Dates			
Newhaven Road (inc.) to Ocean Terminal (exc.)		733		30-Sep-08 A	22-Sep-11				
4	Newhaven Road (inc.) to Ocean Terminal (exc.)	1087	23.65%	30-Sep-08 A	22-Sep-11	[Gantt bar]			
Design		0		25-Jun-09	25-Jun-09				
B01100	Lindsay Rd RW1 Ch.100-170 - Change - CEC comment	0	0%		25-Jun-09	[Gantt bar] B01100 ◆ Lindsay Rd RW1 Ch.100-170 - Change - CEC comment			
Lindsay Road Retaining Walls (W1)		164		15-Jun-09	15-Feb-10				
WBSSum001	Lindsay Road Retaining Walls (W1) (WBS Summary)	246	0%	15-Jun-09	15-Feb-10	[Gantt bar] WBSSum001			
A20440	Agreement of Change	25	0%	15-Jun-09*	17-Jul-09	[Gantt bar] A20440 Agreement of Change			
Wall A Construction		51		06-Jul-09	15-Sep-09				
12330	Permanent Diversion of Services (by Others)	51	0%	06-Jul-09*	15-Sep-09	[Gantt bar] 12330 Permanent Diversion of Se			
Wall B Construction		100		14-Sep-09	15-Feb-10				
5	Wall B	100	0%	14-Sep-09*	15-Feb-10	[Gantt bar] 5			
Ocean Terminal (inc.) to Port of Leith (exc.)		767		11-Nov-08 A	07-Feb-12				
9	Ocean Terminal (inc.) to Ocean Drive (exc.)	1152	15.72%	11-Nov-08 A	07-Feb-12	[Gantt bar]			
Design		0		23-Jun-09	23-Jun-09				
B01010	Scottish Water - Outfall Consent	0	0%		23-Jun-09*	[Gantt bar] B01010 ◆ Scottish Water - Outfall Consent			
Tower Place Bridge (S17)		339		12-Jun-09	21-Oct-10				
A20040	Agreement of Change	6	0%	12-Jun-09	19-Jun-09*	[Gantt bar] A20040 Agreement of Change			

Date	Revision	Chec...	Approved
12-Jun-09	Construction Programme Updated V45 & Progress	JAC	

█ Actual Work ◆ Milestone
█ Normal █ % Complete

CEC00624393_0110

Three Month Look Ahead Programme

June 2009 - September 2009

EDINBURGH TRAM NETWORK



Activity ID	Activity Name	Original Duration	Activity % Complete	Start	Finish	2009			
						Q3			Q4
Services									
A16050	Temporary Diversion of Services (by others)	22	0%	26-Jun-09	27-Jul-09	A16050 Temporary Diversion of Services (by others)			
S17 Works									
A16080	Temporary Platforms and Demolition	60	0%	28-Jul-09*	20-Oct-09	A16080			
WBSSum003	Tower Place Bridge (S17) (WBS Summary)	451	0%	28-Jul-09	21-Oct-10	WBSSum003			
Trackwork									
A20430	Agreement of Change	16	0%	12-Jun-09	03-Jul-09*	A20430 Agreement of Change			
Port of Leith (inc.) to Bernard Street (exc.)									
15	Ocean Drive (inc.) to Constitution Street (exc.)	891	51.52%	03-Feb-09 A	04-May-11				
Bernard Street (inc.) to Foot of the Walk (exc.)									
18	Constitution Street (inc.) to Foot of the Walk (exc.)	944	54.03%	16-Feb-09 A	15-Dec-11				
01B Foot of the Walk (inc.) to McDonald Road (exc.)									
21	01B Foot of the Walk (inc.) to McDonald Road (exc.)	1190	27.57%	15-Jul-08 A	21-Oct-11				
A20050	Agreement of Change (Trackform)	46	0%	12-Jun-09	17-Aug-09*	A20050 Agreement of Change (Trackform)			
MUDFA & Utilities Completion Dates									
Foot of the walk (inc.) to Balfour Street (exc.)									
22	Foot of the walk (inc.) to Balfour Street (exc.)	1054	24.29%	01-Oct-08 A	19-Aug-11				
Design									
B01270	Works in Leith Walk suspended until access issues resolved	121	46.28%	10-Mar-09 A	11-Sep-09	B01270 Works in Leith Walk suspended until access issues resolved			
Roadwork									
Leith Walk Ch.100-350									
Northbound									
A12390	Construct Kerb lines	12	95%	30-Oct-08 A	14-Sep-09	A12390 Construct Kerb lines			
B25030	Footpath Works	12	95%	17-Nov-08 A	15-Sep-09	B25030 Footpath Works			
A12400	Reset Gullies & Inspection Chambers	5	100%	17-Nov-08 A	14-Sep-09	A12400 Reset Gullies & Inspection Chambers			
A12420	Surface New Carriageway	5	15%	01-Dec-08 A	18-Sep-09	A12420 Surface New Carriageway			
B25410	Re-commence Works	0	0%	14-Sep-09*		B25410 Re-commence Works			
B25020	Duct Works (Jane Street)	8	0%	14-Sep-09	24-Sep-09	B25020 Duct Works			
B25040	Road Markings & Anti-Skid	1	0%	18-Sep-09	21-Sep-09	B25040 Road Markings &			
A12430	Ducts / Street Lighting / Traffic Signals / Road Signs	7	0%	24-Sep-09	05-Oct-09	A12430			
Balfour Street (inc.) to McDonald Road (exc.)									
25	Balfour Street (inc.) to McDonald Road (exc.)	1141	48.7%	15-Jul-08 A	02-Sep-11				
01C McDonald Road (inc.) to Princess Street West (exc.)									
29	01C McDonald Road (inc.) to Princess Street West (exc.)	1270	22.29%	01-Sep-08 A	23-Feb-12				
A20080	Agreement of Change (Roadworks & Trackform)	24	0%	14-Jul-09*	17-Aug-09	A20080 Agreement of Change (Roadworks & Trackform)			

Date	Revision	Chc...	Approved
12-Jun-09	Construction Programme Updated V45 & Progress	JAC	

█ Actual Work ◆ Milestone
█ Normal █ % Complete

CEC00624393_0111

Three Month Look Ahead Programme

June 2009 - September 2009

EDINBURGH TRAM NETWORK



Activity ID	Activity Name	Original Duration	Activity % Complete	Start	Finish	2009			
						Q3	Q4	Q1	Q2
MUDFA & Utilities Completion Dates									
		1		12-Jun-09	15-Jun-09				
McDonald Road (inc.) to Picardy Place (exc.)									
		751		01-Sep-08 A	19-Sep-11				
30	McDonald Road (inc.) to Picardy Place (exc.)	1113	33.69%	01-Sep-08 A	19-Sep-11				
Roadwork									
		94		11-Sep-09	05-Feb-10				
Leith Walk Ch 0-375									
		94		11-Sep-09	05-Feb-10				
A13540	Leith Walk Ch 0-375 Construction	80	0%	11-Sep-09	05-Feb-10	A13540			
Northbound									
B25160	Establish Traffic Management & Temp. Fencing	5	0%	14-Sep-09	18-Sep-09	B25160 Establish Traffic Mana			
B25170	Excavate for new channel and kerb line / remove existing kerbs & gullies	11	0%	18-Sep-09	02-Oct-09	B25170			
B25180	Site Clearance	17	0%	21-Sep-09	13-Oct-09	B25180			
B25190	Construct Kerb lines	18	0%	23-Sep-09	16-Oct-09	B25190			
B25210	Reset Gullies & Inspection Chambers	8	0%	30-Sep-09	09-Oct-09	B25210			
Picardy Place (inc.) to St. Andrews Square (exc.)									
		749		06-Feb-09 A	23-Feb-12				
33	Picardy Place (inc.) to St. Andrews Square (exc.)	1112	11.6%	06-Feb-09 A	23-Feb-12				
Design									
		24		16-Jun-09	20-Jul-09				
12220	Issue Construction Drawings - Picardy Place Tram stop	0	0%		16-Jun-09*	12220 Issue Construction Drawings - Picardy Place Tramstop			
12210	Issue Construction Drawings - Trackwork	0	0%		20-Jul-09*	12210 Issue Construction Drawings - Trackwork			
12230	Issue Construction Drawings - Roadwork	0	0%		20-Jul-09*	12230 Issue Construction Drawings - Roadwork			
St. Andrews Square (inc.) to Princes Street West (exc.)									
		749		12-Dec-08 A	23-Feb-12				
46	St. Andrews Square (inc.) to Princess Street West (exc.)	1112	19.07%	12-Dec-08 A	23-Feb-12				
Princes Street West Tram Stop									
		79		07-Sep-09	08-Jan-10				
630	Civil Engineering And Building Works	65	0%	07-Sep-09*	08-Jan-10	630			
01D Princes Street (inc.) to Haymarket (exc.)									
		653		24-Nov-08 A	29-Jul-11				
39	01D Princess Street (inc.) to Haymarket (exc.)	974	20.13%	24-Nov-08 A	29-Jul-11				
A20070	Agreement of Change (Haymarket)	30	30%	15-May-09 A	02-Jul-09*	A20070 Agreement of Change (Haymarket)			
MUDFA & Utilities Completion Dates									
		76		12-Jun-09	29-Sep-09	650 MUDFA & Utilities - 320-16 Street LEAD & CHILLER STATION West Lothian Road MUDFA & Utilities - Sub-Section 1D 590-14 MUDFA & Utilities - BT Works			
Princes Street West (inc.) to Shandwick Place (exc.)									
		475		24-Nov-08 A	05-Nov-10				
40	Princes Street West (inc.) to Shadwick Place (exc.)	704	27.27%	24-Nov-08 A	05-Nov-10				
Roadwork									
		314		23-Mar-09 A	28-Oct-09				
Princes Street Ch 380-0,1980-1360									
		314		23-Mar-09 A	28-Oct-09				
West Section Eastbound Side									
		109		23-Mar-09 A	21-Sep-09				
A13850	Trackworks (576+432)	105	27%	23-Mar-09 A	21-Sep-09	A13850 Trackworks (576			
A20210	Eastbound Carriageway	46	0%	07-Aug-09*	21-Sep-09	A20210 Eastbound Carri			
A13930	Remove fencing and Traffic Management	1	0%	21-Sep-09	21-Sep-09	A13930 Remove fencing			
East Section Eastbound Side									
		309		24-Apr-09 A	06-Oct-09				

Date	Revision	Chc...	Approved
12-Jun-09	Construction Programme Updated V45 & Progress	JAC	

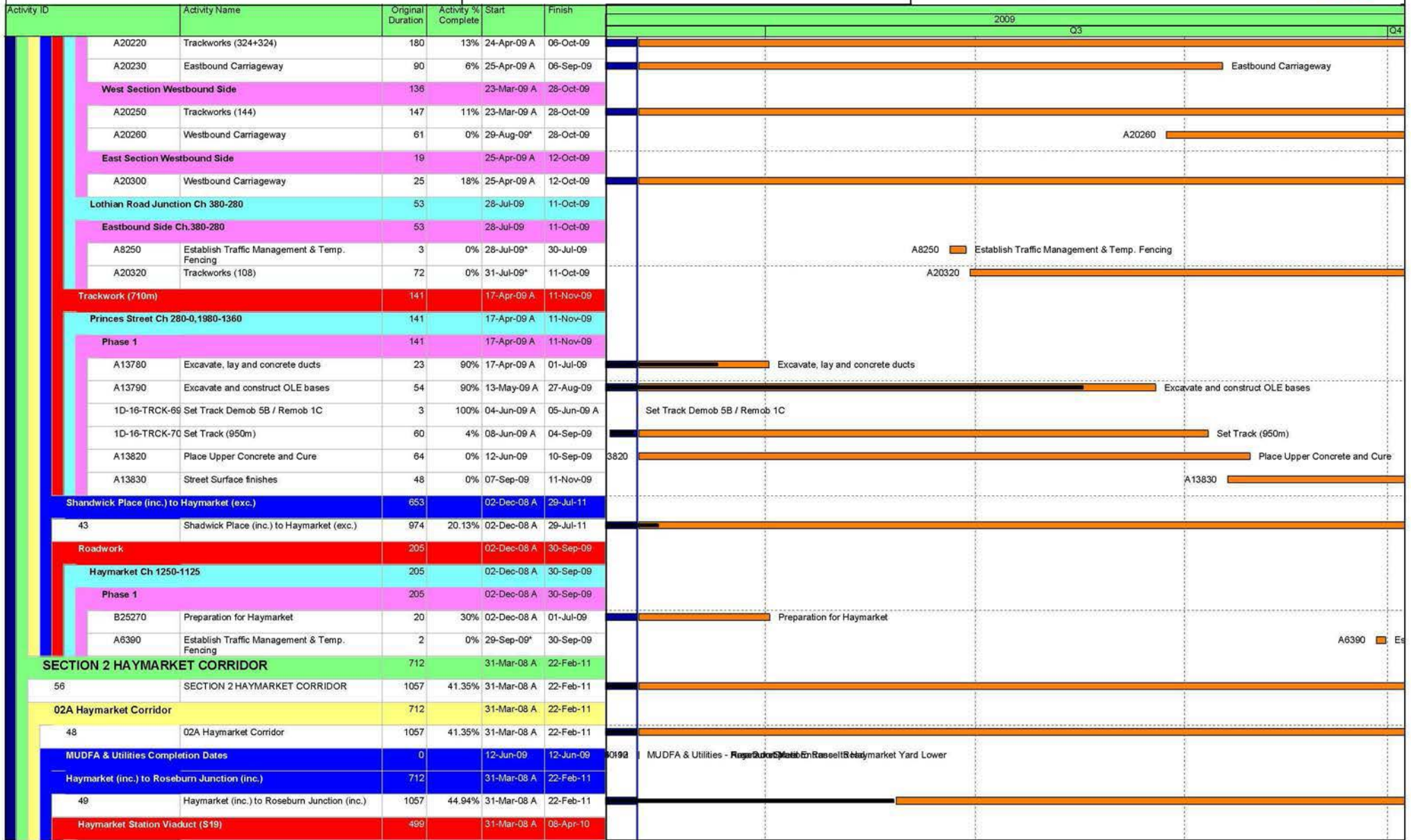
■ Actual Work ◆ Milestone
■ Normal ■ % Complete

CEC00624393_0112

Three Month Look Ahead Programme

June 2009 - September 2009

EDINBURGH TRAM NETWORK



Date	Revision	Chc...	Approved
12-Jun-09	Construction Programme Updated V45 & Progress	JAC	

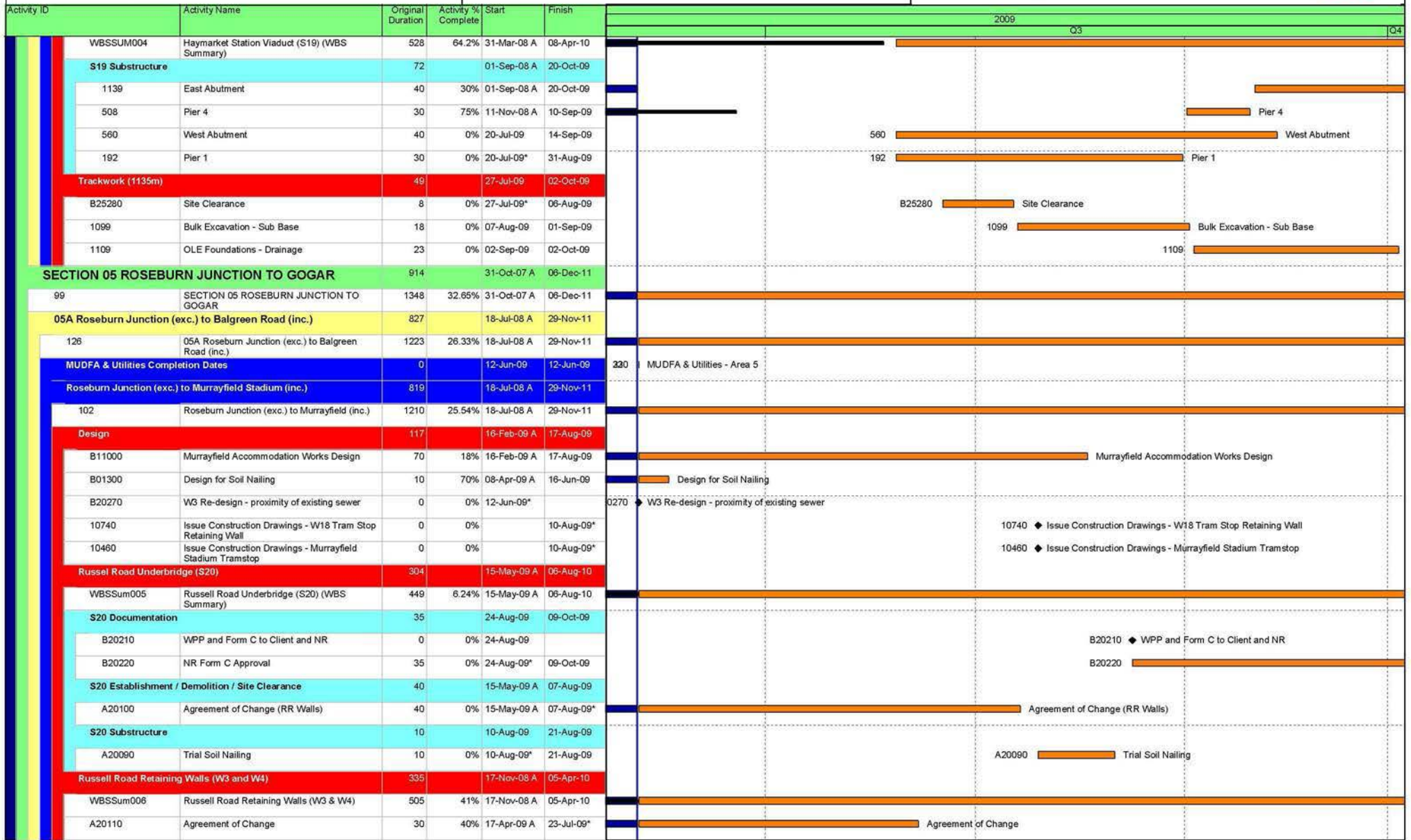
█ Actual Work ◆ Milestone
█ Normal █ % Complete

CEC00624393_0113

Three Month Look Ahead Programme

June 2009 - September 2009

EDINBURGH TRAM NETWORK



Date	Revision	Chec...	Approved
12-Jun-09	Construction Programme Updated V45 & Progress	JAC	

█ Actual Work ◆ Milestone
█ Normal █ % Complete

CEC00624393_0114

Three Month Look Ahead Programme

June 2009 - September 2009

EDINBURGH TRAM NETWORK



Activity ID	Activity Name	Original Duration	Activity % Complete	Start	Finish	2009			
						Q3			Q4
Demolition / Site Clearance									
250	Demolish Existing Buildings	20	0%	03-Jul-09	30-Jul-09	250 Demolish Existing Buildings			
Wall 3 Construction									
107	Site Clearance	10	50%	17-Nov-08 A	30-Jul-09	107 Site Clearance			
Wall 4 Construction									
B25310	Site Clearance	10	50%	17-Nov-08 A	30-Jul-09	B25310 Site Clearance			
B25320	Temporary Access Road	15	0%	23-Jul-09*	13-Aug-09	B25320 Temporary Access Road			
B25330	Pile Caps	15	0%	14-Aug-09	03-Sep-09	B25330 Pile Caps			
B25340	Retaining Wall	5	0%	04-Sep-09	10-Sep-09	B25340 Retaining Wall			
B25350	Waterproofing	20	0%	11-Sep-09	08-Oct-09	B25350 Waterproofing			
B25360	Imported Fill	25	0%	25-Sep-09	29-Oct-09	B25360 Imported Fill			
Murrayfield Tram Stop Retaining Wall (W18)									
WBSSum007	Murrayfield Tramstop Retaining Wall (W18) (WBS Summary)	459	5.23%	24-Nov-08 A	20-Aug-10	WBSSum007 Murrayfield Tramstop Retaining Wall (W18) (WBS Summary)			
B25309	Agreement of Change	100	0%	12-Jun-09	19-Sep-09	B25309 Agreement of Change			
Foundations									
182	Foundations	15	0%	21-Sep-09	09-Oct-09	182 Foundations			
Wall 18 Construction									
108	Site Clearance	20	20%	24-Nov-08 A	29-Sep-09	108 Site Clearance			
Murrayfield Stadium (exc.) to Balgreen Road (inc.)									
136	Murrayfield (exc.) to Balgreen Road (inc.)	1218	26.44%	24-Jul-08 A	24-Nov-11	136 Murrayfield (exc.) to Balgreen Road (inc.)			
A20380	Agreement of Change	40	0%	12-Jun-09	07-Aug-09*	A20380 Agreement of Change			
Design									
B20280	Temporary Works Design - S21C Underpass	65	0%	01-Sep-08 A	25-Jun-09	B20280 Temporary Works Design - S21C Underpass			
B20320	SDS Re-Design (Ground Improvement) - S21D	65	0%	01-Oct-08 A	09-Jul-09	B20320 SDS Re-Design (Ground Improvement) - S21D			
10780	Re-design - S21E Water of Leith Bridge	50	68%	02-Mar-09 A	06-Jul-09	10780 Re-design - S21E Water of Leith Bridge			
Baird Drive Retaining Walls (W8)									
B25319	Agreement of Change	98	0%	12-Jun-09	17-Sep-09	B25319 Agreement of Change			
WBSSum008	Baird Drive Retaining Walls (W8) (WBS Summary)	237	0%	01-Sep-09 A	03-Feb-10	WBSSum008 Baird Drive Retaining Walls (W8) (WBS Summary)			
Foundations									
114	Site Clearance	10	20%	01-Sep-09 A	29-Sep-09	114 Site Clearance			
458	Foundations	15	0%	30-Sep-09	20-Oct-09	458 Foundations			
Roseburn Street Viaduct (S21A)									
WBSSum010	Roseburn Street Viaduct (S21A) (WBS Summary)	1026	66.57%	01-Sep-08 A	23-Jun-11	WBSSum010 Roseburn Street Viaduct (S21A) (WBS Summary)			
Murrayfield Retaining Walls (S21B)									
110	Site Clearance	20	65%	14-Oct-08 A	08-Jan-10	110 Site Clearance			

Date	Revision	Chec...	Approved
12-Jun-09	Construction Programme Updated V45 & Progress	JAC	

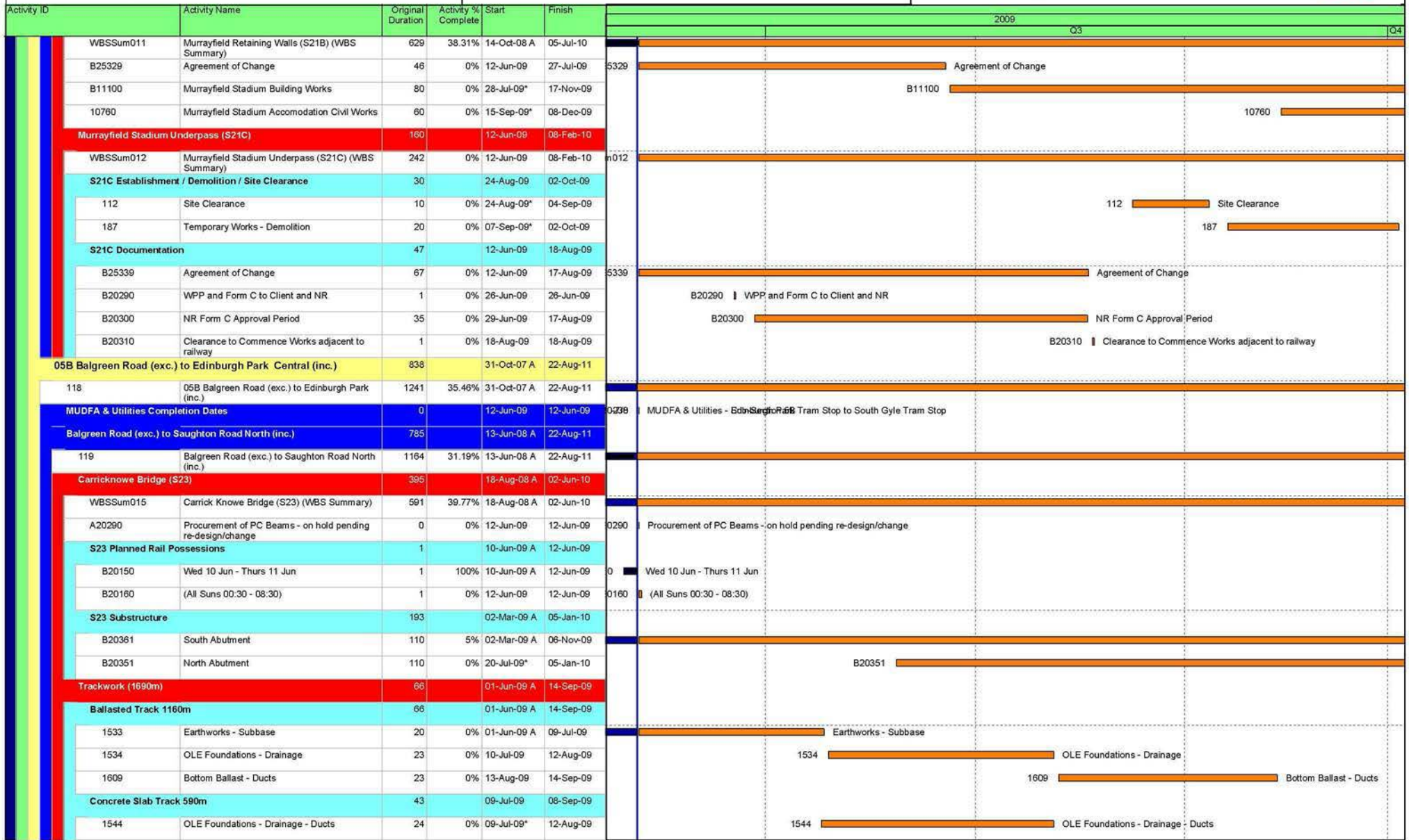
█ Actual Work ◆ Milestone
█ Normal █ % Complete

CEC00624393_0115

Three Month Look Ahead Programme

June 2009 - September 2009

EDINBURGH TRAM NETWORK



Date	Revision	Chec...	Approved
12-Jun-09	Construction Programme Updated V45 & Progress	JAC	

█ Actual Work ◆ Milestone
█ Normal █ % Complete

CEC00624393_0116

Three Month Look Ahead Programme

June 2009 - September 2009

EDINBURGH TRAM NETWORK



Activity ID	Activity Name	Original Duration	Activity % Complete	Start	Finish	2009			
						Q3			Q4
1543	Trackwork	34	0%	15-Jul-09	01-Sep-09	1543 Trackwork			
5B-10C-TRCK-69	Track laying Demob 1A / Remob 5B	3	0%	29-Jul-09	31-Jul-09	5B-10C-TRCK-69 Track laying Demob 1A / Remob 5B			
5B-10C-TRCK-70	Track laying	28	0%	04-Aug-09	08-Sep-09	5B-10C-TRCK-70 Track laying			
Saughton Road North (exc.) to Bankhead (inc.)		685		11-Jul-08 A	05-May-11				
124	Saughton road North (exc.) to South Gyle Access (inc.)	728	32.15%	11-Jul-08 A	05-May-11	124			
Design		30		12-Jun-09	24-Jul-09				
10860	Issue Construction Drawings - W11	0	0%	12-Jun-09*	12-Jun-09*	0860	Issue Construction Drawings - W11		
12880	Issue Construction Drawings - S26	0	0%	12-Jun-09*	12-Jun-09*	2880	Issue Construction Drawings - S26		
B20340	S26 "On Hold" awaiting TIE decision on design	0	0%	12-Jun-09*		0340	S26 "On Hold" awaiting TIE decision on design		
13240	W11 - Re-design	30	0%	12-Jun-09	24-Jul-09*	3240	W11 - Re-design		
Bankhead Retaining Wall (W11)		20		24-Aug-09	21-Sep-09				
WBSSum016	Bankhead Retaining Wall (W11) (WBS Summary)	28	0%	24-Aug-09	21-Sep-09		WBSSum016	Bankhead Retain	
Wall 11 Construction		20		24-Aug-09	21-Sep-09				
127	Retaining Wall Construction	20	0%	24-Aug-09	21-Sep-09		127	Retaining Wall Co	
South Gyle Access Bridge (S26)		188		12-Jun-09	18-Mar-10				
WBSSum017	South Gyle Access Bridge (S26) (WBS Summary)	280	0%	12-Jun-09	18-Mar-10	017	WBSSum017		
A20390	Agreement of Change	40	0%	12-Jun-09	07-Aug-09*	0390	Agreement of Change		
S26 Substructure		83		24-Aug-09	17-Dec-09				
156	Substructure	83	0%	24-Aug-09	17-Dec-09		156	Substructure	
Trackwork (1260m)		36		20-Jul-09	08-Sep-09				
223	Earthworks and Subbase	8	0%	20-Jul-09*	29-Jul-09		223	Earthworks and Subbase	
510	OLE Foundations - Drainage - Ducts	28	0%	30-Jul-09	08-Sep-09		510	OLE Foundations - Drainage - Ducts	
Bankhead (exc.) to Edinburgh Park Station (inc.)		668		11-Jul-08 A	29-Mar-11				
130	South Gyle Access (exc.) to Edinburgh Park Station (inc.)	707	33.82%	11-Jul-08 A	29-Mar-11	130			
A20420	Agreement of Change	40	0%	12-Jun-09	07-Aug-09*	0420	Agreement of Change		
Trackwork (790m)		254		14-Oct-08 A	22-Oct-09				
213	Earthworks and Subbase	15	0%	14-Oct-08 A	17-Jul-09		213	Earthworks and Subbase	
500	OLE Foundations - Drainage	32	0%	17-Jul-09	02-Sep-09		500	OLE Foundations - Drainage	
859	Ducts and Bottom Ballast	16	0%	02-Sep-09	24-Sep-09		859	Ducts and B	
5B-08-TRCK-70	Track laying (790m)	20	0%	24-Sep-09	22-Oct-09			5B-08-TRCK-70	
Edinburgh Park Station (exc.) to Edinburgh Park Central (inc.)		813		31-Oct-07 A	15-Jul-11				
133	Edinburgh Park Station (exc.) to Edinburgh Park (inc.)	1203	36.58%	31-Oct-07 A	15-Jul-11	133			
Design		0		12-Jun-09	12-Jun-09				
B01210	Scottish Water - Outfall Consent	0	0%	12-Jun-09*	12-Jun-09*	1210	Scottish Water - Outfall Consent		
Edinburgh Park Station Bridge (S27)		523		31-Oct-07 A	13-May-10				

Date	Revision	Chec...	Approved
12-Jun-09	Construction Programme Updated V45 & Progress	JAC	

█ Actual Work ◆ Milestone
█ Normal █ % Complete

CEC00624393_0117

Three Month Look Ahead Programme

June 2009 - September 2009

EDINBURGH TRAM NETWORK



Activity ID	Activity Name	Original Duration	Activity % Complete	Start	Finish	2009			
						Q3			Q4
WBSSum018	Edinburgh Park Station Bridge (S27) (WBS Summary)	775	56.76%	31-Oct-07 A	13-May-10	[Gantt bar]			
S27 Planned Rail Possessions									
B20080	Wed 10 Jun - Thurs 11 Jun	1	0%	12-Jun-09*	12-Jun-09	0080	Wed 10 Jun - Thurs 11 Jun		
B20090	(All Suns 00:30 - 08:30)	1	0%	12-Jun-09	12-Jun-09	0090	(All Suns 00:30 - 08:30)		
S27 Superstructure									
B20110	Superstructure	151	15%	08-Apr-09 A	22-Jan-10	[Gantt bar]			
S27 Finishes									
13440	North Approach Ramp	53	10%	03-Nov-08 A	26-Aug-09	[Gantt bar] North Approach Ramp			
13450	South Approach Ramp	53	0%	12-Jun-09	26-Aug-09	[Gantt bar] South Approach Ramp			
Trackwork (854m)									
203	Earthworks- Subbase	11	5%	15-Sep-08 A	24-Aug-09	[Gantt bar] Earthworks- Subbase			
869	Fencing	10	45%	01-May-09 A	30-Sep-10	[Gantt bar]			
490	OLE Foundations - Drainage	19	0%	24-Aug-09	18-Sep-09	[Gantt bar] 490 OLE Foundations - Dr			
829	Track Formation - Ducts	16	0%	18-Sep-09	12-Oct-09	[Gantt bar] 829			
05C Edinburgh Park Central (exc.) to Gogarburn (inc.)									
137	05C Edinburgh Park (exc.) to Gogarburn (inc.)	1225	25.89%	13-May-08 A	06-Dec-11	[Gantt bar]			
690-2/3/6	MUDFA & Utilities - Gogarburn TS to Edinburgh Park TS BT Works	0	0%	12-Jun-09*		2/3/6	MUDFA & Utilities - Gogarburn TS to Edinburgh Park TS BT Works		
MUDFA & Utilities Completion Dates									
Edinburgh Park Central (exc.) to Gyle Centre (inc.)									
138	Edinburgh Park (exc.) to Gyle (inc.)	809	33.76%	13-May-08 A	30-Nov-10	[Gantt bar]			
Gyle Centre Tram Stop Retaining Wall (W19)									
WBSSum019	Gyle Centre Tramstop Retaining Wall (W19) (WBS Summary)	71	0%	12-Jun-09	21-Aug-09	[Gantt bar] Gyle Centre Tramstop Retaining Wall (W19) (WBS Summary)			
A20400	Agreement of Change	20	0%	12-Jun-09	09-Jul-09*	[Gantt bar] Agreement of Change			
Wall 19 Construction									
139	Wall Construction	20	0%	24-Jul-09	21-Aug-09	[Gantt bar] 139 Wall Construction			
Trackwork (760m)									
140	Earthworks and Subbase	20	0%	24-Aug-09	18-Sep-09	[Gantt bar] 140 Earthworks and Subba			
183	OLE Foundations - Drainage	30	0%	21-Sep-09	30-Oct-09	[Gantt bar] 183			
Gyle Centre (exc.) to Depot Stop (inc.)									
142	Gyle (exc.) to Depot Stop (inc.)	1133	27.99%	28-Jul-08 A	05-Sep-11	[Gantt bar]			
Design									
13160	Re-design S28 A8 Underpass	40	50%	17-Mar-09 A	09-Jul-09*	[Gantt bar] Re-design S28 A8 Underpass			
A8 Underpass (S28)									
WBSSum020	A8 Underpass (S28) (WBS Summary)	435	17.01%	15-Oct-08 A	08-Jun-10	[Gantt bar]			
S28 Establishment / Demolition / Site Clearance									

Date	Revision	Chec...	Approved
12-Jun-09	Construction Programme Updated V45 & Progress	JAC	

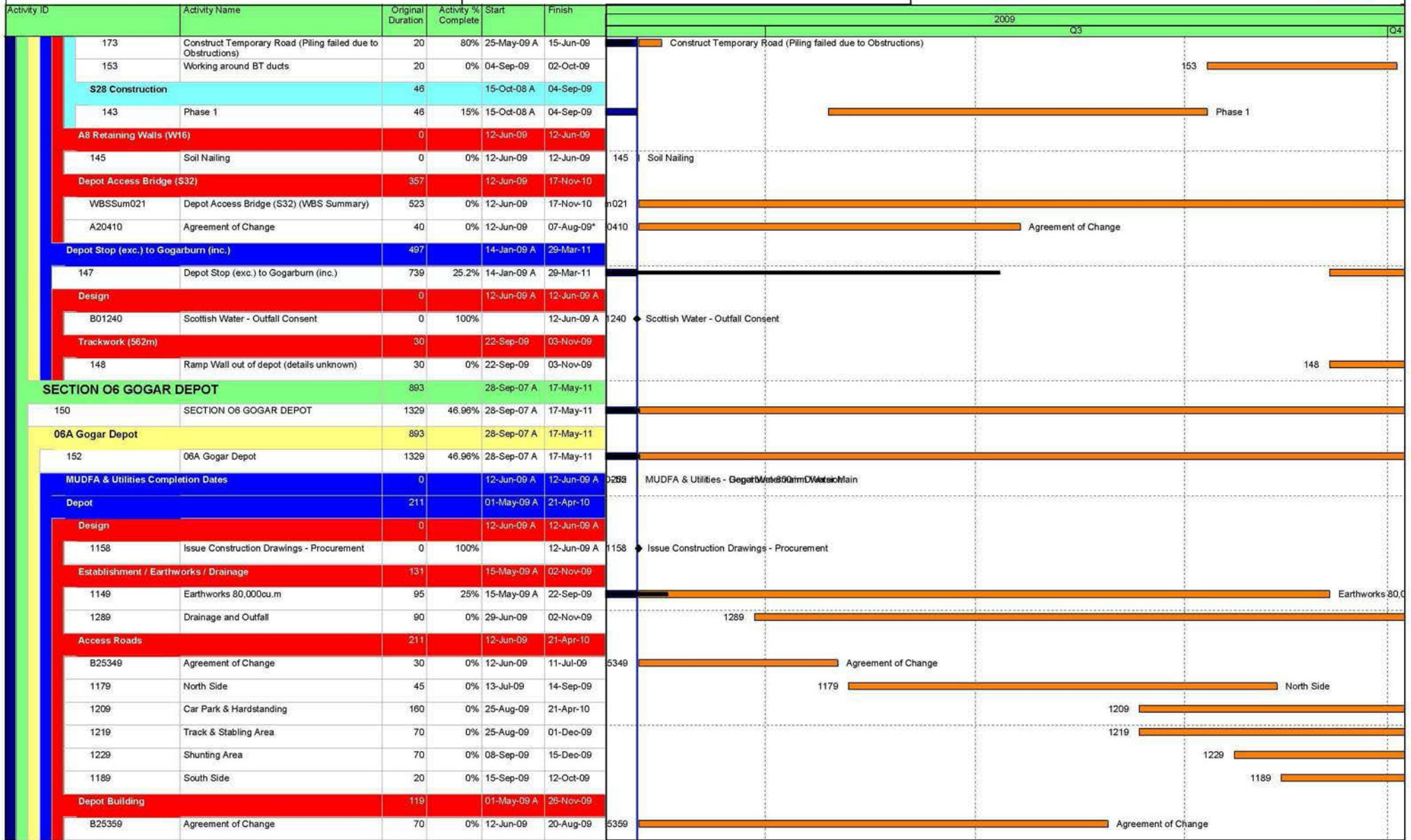
█ Actual Work ◆ Milestone
█ Normal █ % Complete

CEC00624393_0118

Three Month Look Ahead Programme

June 2009 - September 2009

EDINBURGH TRAM NETWORK



Date	Revision	Chec...	Approved
12-Jun-09	Construction Programme Updated V45 & Progress	JAC	

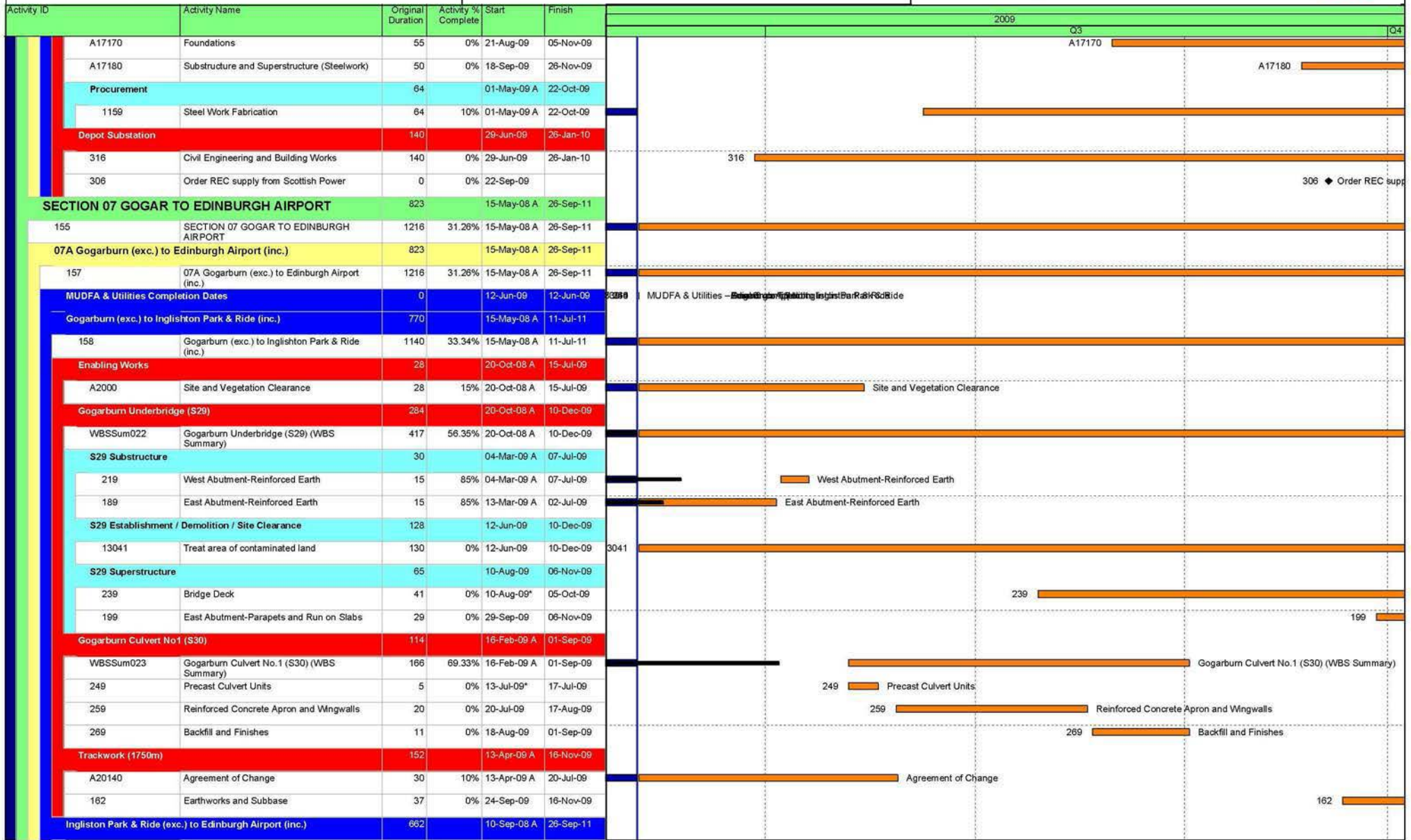
█ Actual Work ◆ Milestone
█ Normal █ % Complete

CEC00624393_0119

Three Month Look Ahead Programme

June 2009 - September 2009

EDINBURGH TRAM NETWORK



Date	Revision	Chec...	Approved
12-Jun-09	Construction Programme Updated V45 & Progress	JAC	

█ Actual Work ◆ Milestone
█ Normal █ % Complete

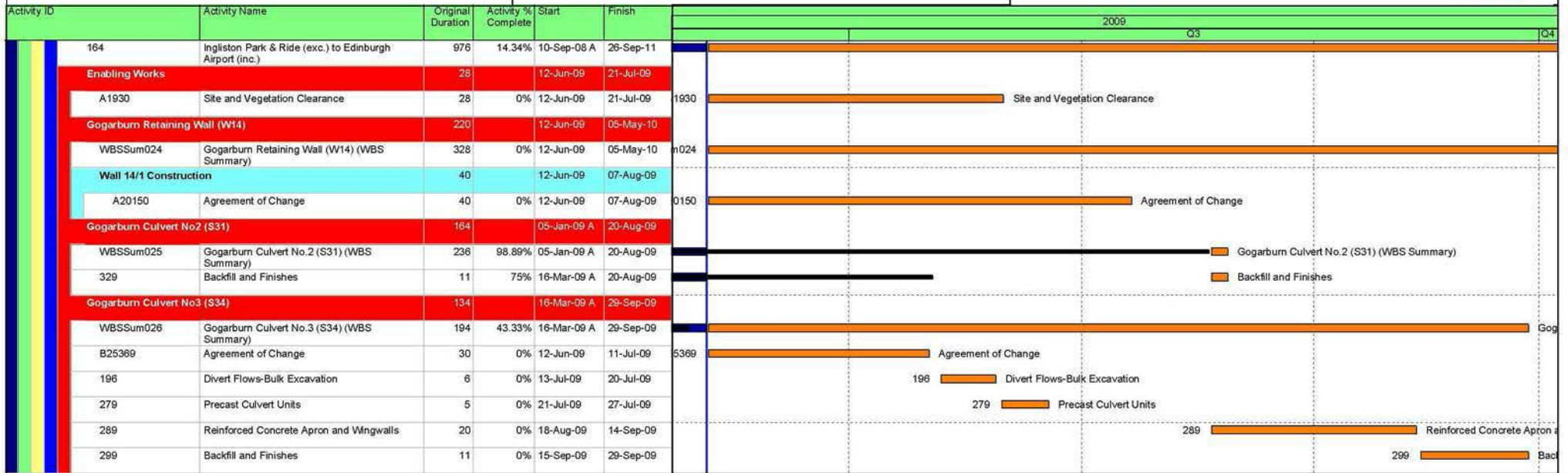
CEC00624393_0120

Three Month Look Ahead Programme

EDINBURGH TRAM NETWORK



June 2009 - September 2009



Date	Revision	Chec...	Approved
12-Jun-09	Construction Programme Updated V45 & Progress	JAC	

█ Actual Work ◆ Milestone
█ Normal █ % Complete

CEC00624393_0121

10.4 Tram Programme



SUPPLY OF 27 TRAMS FOR THE EDINBURGH TRAM NETWORK

PROJECT PLANNING up to 30th of June

Id	Name	%	Start	Finish	2008												2009												2010												2011											
					M	A	M	J	J	A	S	O	N	D	E	F	M	A	M	J	J	A	S	O	N	D	E	F	M	A	M	J	J	A	S	O	N	D	E	F	M	A	M	J	J							
1	GENERAL	100%	06/05/08	06/05/08																																																
2	NTP	100%	06/05/08	06/05/08																																																
3	ENGINEERING	100%	06/05/08	15/05/09																																																
4	BASIC ENGINEERING	100%	06/05/08	13/11/08																																																
5	MOCK-UP	100%	13/05/08	05/11/08																																																
6	DESIGN & MANUFACTURING MOCK-UP	100%	13/05/08	29/09/08																																																
7	APPROVAL MOCK-UP	100%	30/09/08	05/11/08																																																
8	UNDERFRAME DESIGN	100%	01/07/08	24/11/08																																																
9	CARBODY DESIGN	100%	28/08/08	29/04/09																																																
10	LIST OF STEEL MATERIALS	100%	11/06/08	11/06/08																																																
11	INSTALLATIONS DESIGN	100%	24/10/08	14/04/09																																																
12	INTERIORS & FINISHING DESIGN	100%	25/11/08	15/05/09																																																
13	BOGIES DESIGN	100%	23/07/08	15/01/09																																																
14	1st TRAMSET PROCUREMENT	98%	06/05/08	10/07/09																																																
15	SYSTEMS	99%	06/05/08	10/07/09																																																
16	SPECIFICATIONS	100%	06/05/08	04/06/08																																																
17	SELECTION OF SUPPLIERS	100%	21/05/08	01/07/08																																																
18	ORDERS	100%	17/06/08	29/07/08																																																
19	INTERFACE 1- Systems Interface Basic Definition	100%	30/07/08	29/04/09																																																
20	CAF SYSTEMS	100%	30/07/08	31/10/08																																																
21	TPDS	100%	30/07/08	09/01/09																																																
22	RADIO	100%	30/07/08	04/02/09																																																
23	BUS TRACKER	100%	30/07/08	29/04/09																																																
24	INTERFACE 2- Systems Interface Complete Definition	100%	25/09/08	29/04/09																																																
25	CAF SYSTEMS	100%	25/09/08	15/12/08																																																
26	TPDS	100%	25/09/08	06/02/09																																																
27	RADIO	100%	25/09/08	04/03/09																																																
28	BUS TRACKER	100%	25/09/08	29/04/09																																																
29	MANUFACTURING & PURCHASING & TESTING	97%	27/06/08	10/07/09																																																
30	DELIVERY PREASSEMBLIES COMPONENTS	100%	15/04/09	15/04/09																																																
31	DELIVERY FIRST EQUIPMENT	87%	15/04/09	10/07/09																																																
32	OTHERS COMPONENTS & MATERIALS	98%	11/06/08	10/07/09																																																
33	STEEL MATERIALS	100%	11/06/08	24/11/08																																																
34	CARBODY COMPONENTS	100%	24/10/08	16/03/09																																																
35	INSTALLATIONS COMPONENTS	100%	16/12/08	29/05/09																																																
36	INTERIORS & FINISHING COMPONENTS	92%	17/02/09	10/07/09																																																
37	1st TRAM MANUFACTURING & TESTING	52%	14/11/08	04/06/10																																																
38	BODYSHELLS MANUFACTURING	100%	14/11/08	02/06/09																																																
39	JIGS & TOOLING MANUFACTURING	100%	14/11/08	16/03/09																																																
40	FRAME TOOLING	100%	14/11/08	09/02/09																																																
41	BODYSHELL TOOLING	100%	12/01/09	16/03/09																																																
42	1st BODYSHELL MANUFACTURING	100%	25/11/08	16/04/09																																																
43	FIRST PIECES LOT	100%	25/11/08	07/01/09																																																



SUPPLY OF 27 TRAMS FOR THE EDINBURGH TRAM NETWORK
PROJECT PLANNING up to 30th of June

Id	Name	%	Start	Finish	2008												2009												2010												2011											
					M	A	M	J	J	A	S	O	N	D	E	F	M	A	M	J	J	A	S	O	N	D	E	F	M	A	M	J	J	A	S	O	N	D	E	F	M	A	M	J	J							
75	REMAINING TRAM'S	4%	18/03/09	04/02/11	[Gantt bar from March 2009 to February 2011]																																															
76	2nd Tram	24%	18/03/09	04/06/10	[Gantt bar from March 2009 to June 2010]																																															
77	BODYSHELLS MANUFACTURING & FINISHING	41%	18/03/09	24/12/09	[Gantt bar from March 2009 to December 2009]																																															
78	FACTORY & DYNAMIC TESTS	0%	09/12/09	19/04/10	[Gantt bar from December 2009 to April 2010]																																															
79	TRANSPORT	0%	19/04/10	10/05/10	[Gantt bar from April 2010 to May 2010]																																															
80	DELIVERY OF THE TRAM	0%	10/05/10	10/05/10	[Gantt bar from May 2010 to May 2010]																																															
81	COMMISSIONING OF THE TRAM	0%	10/05/10	04/06/10	[Gantt bar from May 2010 to June 2010]																																															
82	3rd Tram	20%	07/04/09	04/06/10	[Gantt bar from April 2009 to June 2010]																																															
83	BODYSHELLS MANUFACTURING & FINISHING	33%	07/04/09	20/01/10	[Gantt bar from April 2009 to January 2010]																																															
84	FACTORY TESTS	0%	05/01/10	22/03/10	[Gantt bar from January 2010 to March 2010]																																															
85	TRANSPORT	0%	22/03/10	12/04/10	[Gantt bar from March 2010 to April 2010]																																															
86	DELIVERY OF THE TRAM	0%	12/04/10	12/04/10	[Gantt bar from April 2010 to April 2010]																																															
87	COMMISSIONING OF THE TRAM	0%	12/04/10	04/06/10	[Gantt bar from April 2010 to June 2010]																																															
88	4th Tram	16%	29/04/09	04/06/10	[Gantt bar from April 2009 to June 2010]																																															
89	BODYSHELLS MANUFACTURING & FINISHING	25%	29/04/09	09/02/10	[Gantt bar from April 2009 to February 2010]																																															
90	FACTORY TESTS	0%	25/01/10	29/03/10	[Gantt bar from January 2010 to March 2010]																																															
91	TRANSPORT	0%	29/03/10	19/04/10	[Gantt bar from March 2010 to April 2010]																																															
92	DELIVERY OF THE TRAM	0%	19/04/10	19/04/10	[Gantt bar from April 2010 to April 2010]																																															
93	COMMISSIONING OF THE TRAM	0%	19/04/10	04/06/10	[Gantt bar from April 2010 to June 2010]																																															
94	5th Tram	12%	20/05/09	04/06/10	[Gantt bar from May 2009 to June 2010]																																															
95	BODYSHELLS MANUFACTURING & FINISHING	17%	20/05/09	01/03/10	[Gantt bar from May 2009 to March 2010]																																															
96	FACTORY TESTS	0%	12/02/10	05/04/10	[Gantt bar from February 2010 to April 2010]																																															
97	TRANSPORT	0%	05/04/10	26/04/10	[Gantt bar from April 2010 to April 2010]																																															
98	DELIVERY OF THE TRAM	0%	26/04/10	26/04/10	[Gantt bar from April 2010 to April 2010]																																															
99	COMMISSIONING OF THE TRAM	0%	26/04/10	04/06/10	[Gantt bar from April 2010 to June 2010]																																															
100	6th Tram	3%	19/06/09	05/07/10	[Gantt bar from June 2009 to July 2010]																																															
101	BODYSHELLS MANUFACTURING & FINISHING	5%	19/06/09	16/03/10	[Gantt bar from June 2009 to March 2010]																																															
102	FACTORY TESTS	0%	26/02/10	01/06/10	[Gantt bar from February 2010 to June 2010]																																															
103	TRANSPORT	0%	01/06/10	15/06/10	[Gantt bar from June 2010 to June 2010]																																															
104	DELIVERY OF THE TRAM	0%	15/06/10	15/06/10	[Gantt bar from June 2010 to June 2010]																																															
105	COMMISSIONING OF THE TRAM	0%	15/06/10	05/07/10	[Gantt bar from June 2010 to July 2010]																																															
106	7th Tram	0%	21/07/09	05/07/10	[Gantt bar from July 2009 to July 2010]																																															
107	BODYSHELLS MANUFACTURING & FINISHING	0%	21/07/09	31/03/10	[Gantt bar from July 2009 to March 2010]																																															
108	FACTORY TESTS	0%	15/03/10	01/06/10	[Gantt bar from March 2010 to June 2010]																																															
109	TRANSPORT	0%	01/06/10	15/06/10	[Gantt bar from June 2010 to June 2010]																																															
110	DELIVERY OF THE TRAM	0%	15/06/10	15/06/10	[Gantt bar from June 2010 to June 2010]																																															
111	COMMISSIONING OF THE TRAM	0%	15/06/10	05/07/10	[Gantt bar from June 2010 to July 2010]																																															
112	8th Tram	0%	17/09/09	04/08/10	[Gantt bar from September 2009 to August 2010]																																															
113	BODYSHELLS MANUFACTURING & FINISHING	0%	17/09/09	15/04/10	[Gantt bar from September 2009 to April 2010]																																															
114	FACTORY TESTS	0%	30/03/10	01/07/10	[Gantt bar from March 2010 to July 2010]																																															
115	TRANSPORT	0%	01/07/10	15/07/10	[Gantt bar from July 2010 to July 2010]																																															
116	DELIVERY OF THE TRAM	0%	15/07/10	15/07/10	[Gantt bar from July 2010 to July 2010]																																															
117	COMMISSIONING OF THE TRAM	0%	15/07/10	04/08/10	[Gantt bar from July 2010 to August 2010]																																															

INFORME DE AVANCE DE FABRICACIÓN MANUFACTURING STATUS "EDINBURGH TRAM"

1. ENDEREZADO DE CAJA / BODYSHELL STRAIGHTEN



G-4 Bodyshell straighten

2. PLANTILLA MEDICIÓN CAJA / BODYSHELL MEASUREMENT JIG



A-4 + B-4 Bodyshells in the measurement jig