

Date	Revision	Checked	Approved	Date	Revision	Checked	Approved
02-Feb-11	Revision 0	SCS/MHE	BSC	28-Jun-11	Revision 3a	SCS/MHE	BSC
16-Feb-11	Revision 1	SCS/MHE	BSC	08-Sep-11	Revision 4	SCS	BSC
18-Feb-11	Revision 2	SCS/MHE	BSC				
06-May-11	Revision 3	SCS/MHE	BSC				

- █ Remaining Level of Effort
- █ Actual Work
- █ Remaining Work
- █ Critical Remaining Work
- ◆ Milestone
- ▬ Summary



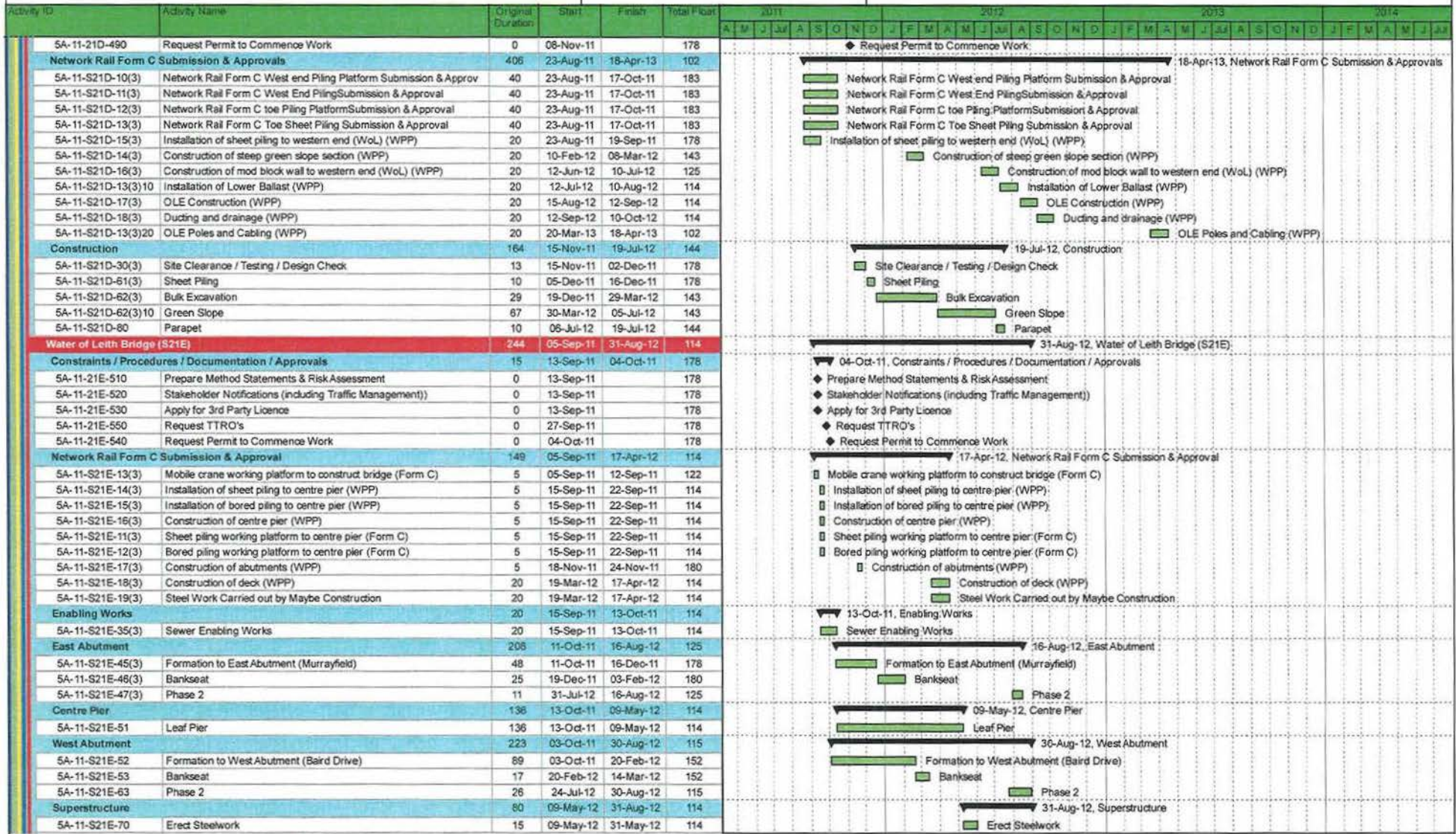
Programme following Mediation

on 8 - 12 March 2011 (110908)

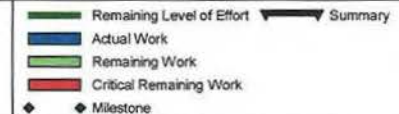
EDINBURGH TRAM NETWORK



08-Sep-11 10:13



Date	Revision	Checked	Approved	Date	Revision	Checked	Approved
02-Feb-11	Revision 0	SCS/MHE	BSC	28-Jun-11	Revision 3a	SCS/MHE	BSC
18-Feb-11	Revision 1	SCS/MHE	BSC	08-Sep-11	Revision 4	SCS	BSC
18-Feb-11	Revision 2	SCS/MHE	BSC				
06-May-11	Revision 3	SCS/MHE	BSC				



CEC02085650\_0045



























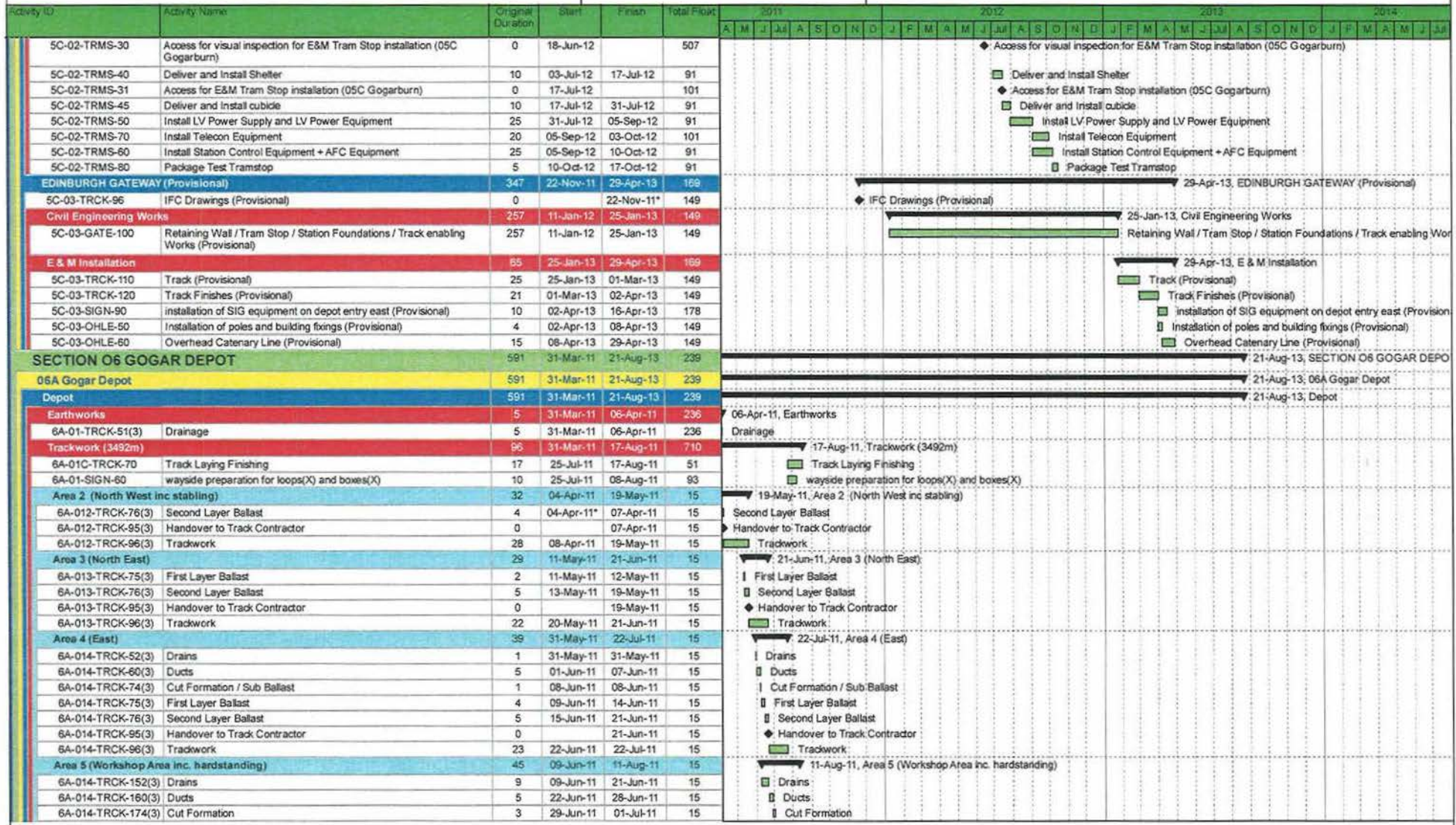


Programme following Mediation  
on 8 - 12 March 2011 (110908)

## EDINBURGH TRAM NETWORK



08-Sep-11 10:13



Date	Revision	Checked	Approved	Date	Revision	Checked	Approved
02-Feb-11	Revision 0	SCS/MHE	BSC	28-Jun-11	Revision 3a	SCS/MHE	BSC
16-Feb-11	Revision 1	SCS/MHE	BSC	08-Sep-11	Revision 4	SCS	BSC
18-Feb-11	Revision 2	SCS/MHE	BSC				
06-May-11	Revision 3	SCS/MHE	BSC				

- Remaining Level of Effort
- Actual Work
- Remaining Work
- Critical Remaining Work
- ◆ Milestone

CEC02085650\_0058

# Programme following Mediation

on 8 - 12 March 2011 (110908)

## EDINBURGH TRAM NETWORK



08-Sep-11 10:13

Activity ID	Activity Name	Original Duration	Start	Finish	Total Float	2011 2012 2013 2014																																	
						A M J J A S O N D J F M A M J J A S O N D J F M A M J J A S O N D J F M A M J J A S O N D J																																	
6A-014-TRCK-175(3)	Subbase	5	04-Jul-11	08-Jul-11	15																																		
6A-014-TRCK-178(3)	Track Slab	10	11-Jul-11	22-Jul-11	15																																		
6A-014-TRCK-195(3)	Handover to Track Contractor	0		22-Jul-11	15																																		
6A-014-TRCK-196(3)	Trackwork	13	25-Jul-11	11-Aug-11	15																																		
Area 6 (East of Access Bridge)		0	31-Mar-11	31-Mar-11	806																																		
6A-013-TRCK-195	Works suspended awaiting Edinburgh Gateway decision	0		31-Mar-11	806																																		
Depot Building		140	31-Mar-11	18-Oct-11	42																																		
E & M Workshop Equipment Installation		120	31-Mar-11	20-Sep-11	42																																		
6A-01-BLDS-72	Installation of workshop equipment	120	31-Mar-11	20-Sep-11	42																																		
Inspection & Handover		20	21-Sep-11	18-Oct-11	42																																		
6A-01-BLDS-81	Inspection and Testing	20	21-Sep-11	18-Oct-11	42																																		
Access Roads		98	31-Mar-11	19-Aug-11	314																																		
6A-01-ROAD-94(3)	Access Road	22	31-Mar-11	03-May-11	84																																		
6A-01-ROAD-90(3)	Carpark	6	04-Apr-11*	11-Apr-11	404																																		
6A-01-ROAD-95(3)	Complete Access Road & Finishes	70	04-May-11	11-Aug-11	84																																		
6A-01-ROAD-91(3)	Hardstanding	40	16-Jun-11	11-Aug-11	90																																		
6A-01-JNCS-60	Installation of traffic light control - Junction 208	6	12-Aug-11	19-Aug-11	84																																		
E & M Installations		128	20-Jun-11	16-Dec-11	624																																		
6A-01-ELEC-40	Access for visual inspection to cable pits for cable laying (Depot)	0	20-Jun-11		752																																		
6A-01-OHLE-40	Access for visual inspection for E&M Depot installation	0	23-Jun-11		748																																		
6A-01-SGNW-70	Install Signalling Wayside Equipment (Depot)	12	25-Jul-11	10-Aug-11	91																																		
6A-01-OHLE-50(3)	Installation of poles and building fixings (Depot)	12	25-Jul-11	10-Aug-11	15																																		
6A-01-OHLE-41	Access for E&M Depot installation	0	25-Jul-11		15																																		
6A-01-ELEC-41	Access to cable pits for cable laying (Depot)	0	25-Jul-11		63																																		
6A-01-ELEC-70	Install Electrical Cables Depot	25	25-Jul-11	29-Aug-11	78																																		
6A-01-SIGN-40	Installation of 2 SIG-interlocking cubicles depot entries	25	09-Aug-11	12-Sep-11	63																																		
5C-02-SIGN-90	Installation of SIG equipment on depot entry west	10	23-Aug-11	05-Sep-11	63																																		
6A-01-OHLE-60(3)	Overhead Catenary Line (Depot)	61	31-Aug-11	24-Nov-11	0																																		
6A-01-TRCK-80	Points machine mechanical set up	20	29-Sep-11	27-Oct-11	25																																		
6A-01-SIGN-80	Commissioning of 2 SIG -interlocking cubicles depot entries	10	27-Oct-11	10-Nov-11	25																																		
6A-01-OHLE-60(3)10	OCS Testing & Commissioning	15	24-Nov-11	16-Dec-11	0																																		
Operation Control Center (OCC)		591	31-Mar-11	21-Aug-13	114																																		
6A-01-SIGN-150	equipment floor fit out SIG/COM/SCADA/Radio	25	31-Mar-11	06-May-11	132																																		
6A-01-SIGN-110	operating floor fit out	25	09-May-11	13-Jun-11	132																																		
6A-01-SIGN-200	testing and commissioning OCC equipment AIR - HAY	60	28-May-13	21-Aug-13	114																																		
<b>SECTION 07 GOGAR TO EDINBURGH AIRPORT</b>		461	31-Mar-11	14-Feb-13	345																																		
07A Gogarburn (exc.) to Edinburgh Airport (inc.)		461	31-Mar-11	14-Feb-13	345																																		
E & M Installations		185	19-Mar-12	07-Dec-12	386																																		
Constraints / Procedures / Documentation / Approvals		15	20-Mar-12	11-Apr-12	125																																		
7A-4/5-OHLE-510	Prepare Method Statements & Risk Assessment	0	20-Mar-12		125																																		
7A-4/5-OHLE-520	Stakeholder Notifications (including Traffic Management))	0	20-Mar-12		125																																		
7A-4/5-OHLE-530	Apply for 3rd Party Licence	0	20-Mar-12		125																																		
7A-4/5-OHLE-550	Request TTRO's	0	03-Apr-12		125																																		
7A-4/5-OHLE-540	Request Permit to Commence Work	0	11-Apr-12		125																																		
Installation		185	19-Mar-12	07-Dec-12	386																																		
7A-04-OHLE-30	Access for visual inspection for E&M wayside installation GBN - IPR	0	19-Mar-12		569																																		
7A-04-OHLE-31	Access for E&M wayside installation GBN - IPR	0	18-Apr-12		125																																		
7A-04-ELEC-30	Access for visual inspection to cable pits for cable laying GBN - IPR	0	22-Jun-12		503																																		
7A-04-OHLE-50	Installation of poles and building fixings -20 (71 0581 - 71 1351)	4	25-Jun-12	28-Jun-12	137																																		

Date	Revision	Checked	Approved	Date	Revision	Checked	Approved
02-Feb-11	Revision 0	SCS/MHE	BSC	28-Jun-11	Revision 3a	SCS/MHE	BSC
16-Feb-11	Revision 1	SCS/MHE	BSC	08-Sep-11	Revision 4	SCS	BSC
18-Feb-11	Revision 2	SCS/MHE	BSC				
06-May-11	Revision 3	SCS/MHE	BSC				

- Remaining Level of Effort
- Actual Work
- Remaining Work
- Critical Remaining Work
- Milestone
- Summary







**NARRATIVE TO PROGRAMME FOLLOWING MEDIATION ON 8 - 12 MARCH 2011 (110908) Revision 4.**

Without prejudice to any other provision of this Agreement and in particular Schedule Part 45 (On Street Works), for the avoidance of doubt any departure or variation from any of the assumptions and statements in this narrative shall not be, and shall not entitle Infraco to claim, that such departure or variation comprises a Pricing Assumption Variation, Compensation Event, tie Change or On Street Works tie Change.

**General**

The data date of the Programme is 31 March 2011. For work activities currently under construction their anticipated actual progress at 31 March 2011 has been taken as the start point of the Programme.

The Programme for the works recognises the constraints of the allowed working hours stated in the Code of Construction Practice of 0700 to 1900 Monday to Friday and 0800 to 1300 on a Saturday. However a 40 hour effective working week has been used to calculate the duration of activities to take account of rest breaks and travel between work sites. Construction work will be required outside the hours stated in the Code of Construction Practice. The necessary approvals will be sought in advance for these works and the Programme assumes that such approval will be granted as necessary to maintain the Programme. These works include, but shall not be limited to the following activities;

- Enabling works for and establishment/removal of traffic management phases;
  - York Place phases 1 to 3 and sub phases.
  - St Andrews Square phases 1 and 2 and sub phases.
  - St Andrews Square North.
  - St Andrews Square South.
  - St Andrews Square West.
  - South St Andrews/Waverley Junction phases 1 to 4 and sub phases.
  - Princes Street and sub phases.
  - Shandwick Place phases 1 to 7 and sub phases.
  - Haymarket phases 1 to 6 and sub phases.
- Road surfacing tie-ins and white lining at the above locations.
- The delivery and offloading of materials to on-street locations including, but not limited to, track, sleepers, OLE poles & cables, canopies.
- The erection of On Street OLE poles, building fixings and cables.
- The pouring, finishing and curing of concrete that cannot be completed within normal working hours.
- All works including earthworks, structures, rail and systems between Haymarket and Edinburgh Park that due to their proximity to the Network Rail system required which are to be undertaken in a railway possession. These works include but are not limited to;
  - All work adjacent to live rails.
  - Temporary sheet piling and its removal.
  - Concrete Piling works.
  - Ground improvement works.
  - Erection of bridge beams.
  - Operation of craneage to move concrete formwork, reinforcing bars etc.
  - Delivery and off- loading of contractors plant and materials.
  - Positioning of tram rails.
  - Erection of OLE poles and cables.
- The fuelling and maintenance of pumps.
- The maintenance of safety equipment, including traffic management, fencing etc.
- Enabling works for and establishment/removal of traffic management phases;
  - Haymarket Yards.
  - Russell Road.
  - Roseburn Street.

- Balgreen Road.
- South Gyle Access.
- Hermiston Gate.
- Gyle Broadway.
- A8.
- Eastfield Avenue.
- Road surfacing tie-ins and white lining at the above locations.
- Permanent Piling and temporary earthworks support to the A8 underpass.
- Erection of canopy structure at Edinburgh Airport Tram Stop.
- In compliance with the wishes of third parties and subsequent instruction from CEC/tie.
- The delivery / offloading and positioning of package substations.
- Tamping of ballast off street track.
- Stringing catenary cables.
- Commissioning activities.

Assumptions and factual statements upon which the Programme has been prepared are as set out in this document. General assumptions are as follows.

The Programme assumes that all Third Party approvals / licenses will be in place for On Street and Off Street Works to commence and proceed as shown on the Programme.

The Programme assumes that the required Network Rail Possessions will be available for Off Street Works to commence and proceed as shown on the Programme. The construction works in Section 2 and 5 are subject to Network Rail approval. An eleven week period has been assumed for all WPP and form C approvals, which includes a two week CRE approval, a two week Third Party Representative approval, a four week Network Rail approval and a three week "cooling off period" for the WPP. The Programme shows the latest dates by which these approvals must be obtained.

The Programme assumes periods that CAF have previously provided in respect of Tram Delivery and Testing & Commissioning to allow calculation of the dates for Planned Sectional Completion Section A and Planned Sectional Completion Section B. Note that the Programme excludes all TSA/TMA activities. Planned Sectional Completion Section C assumes that all Trams are delivered, tested and applicable System Acceptance Tests successfully completed to allow shadow running to commence.

The Programme is based on the deployment of 3 track gangs and 2 OLE gangs..These resources are shared between On Street and Off Street Works. Should a delay occur on the On Street Works where the resource is not able to be redeployed to the Off Street Works, additional resources will be required to mitigate or negate any delay to the Off Street Works and vice versa.

A delay in the On Street Works will not cause a delay to the Off Street Works or any section thereof or vice versa except where such delay requires the deployment of more than 3 track gangs and 2 OLE gangs.

The Programme is based on the revised "Section A" which is the completion of the Depot (including energisation) excluding the area east of the Depot Access Bridge as shown on drawing ULE90130-06-DEP-00016 Rev6 overmarked and included in Schedule Part 2 of MOV 4; and

The Programme is based on the revised "Section B" which is the completion of the test track (including energisation) functional from the Depot west entry/exit to the airport (excluding the completion of the Kiosk & Canopy at the Airport), and five Trams delivered to the Site and assembled with the first Tram to have completed the Tram Type Test and the remaining Trams to have completed the Tram Commissioning Routine Tests, such tests as described in the Employer's Requirements and the completion of all tests required to enable the commencement of Driver Training.

The Programme is based on the revised "Section C" which is the carrying out and completion of the section from Airport to York Place (including energisation) and the completion of all tests required by the Employer's Requirements in relation to the section from Airport to York Place, including those System Acceptance Tests that must be successfully completed prior to shadow running as provided for in the Employer's Requirements;

The Programme is based on the revised "Section D" which is the completion of shadow running and commencement of revenue service approval obtained and the completion of all tests required by the Employer's Requirements in relation to the section from Airport to York Place, including those System Acceptance Tests that must be successfully completed to enable Service Commencement;

Revised Planned Sectional Completion Dates are as follows:

Section A	16 December 2011
Section B	8 March 2013
Section C	9 April 2014
Section D	8 July 2014

### **Designated Working Areas**

"Designated Working Area means the smallest area to which it is apparent from the Programme that Infracore requires exclusive access in order to carry out the following elements of works as shown in the Programme":

#### **Off-Street Works (and "Prioritised Works")**

##### *Intermediate Section 1A*

Lindsay Road Retaining Wall W1A  
Lindsay Road Retaining Wall W1B  
Lindsay Road Retaining Wall W1C  
Lindsay Road Retaining Wall W1D  
Lindsay Road works  
Tower Place Bridge

##### *Intermediate Section 1C/1D*

Princes Street Remedial Works

##### *Intermediate Section 2A*

E & M Installation 2A  
Haymarket Viaduct (S19)  
Haymarket Tram Stop  
Haymarket Substation  
Track work Haymarket to Roseburn (CH 0 to 260)  
Track work Haymarket to Roseburn (CH 260 to 799)

##### *Intermediate Section 5A*

E & M Installation 5A  
Russell Road Bridge (S20)  
Russell Road Retaining Walls (W3 and W4)  
Murrayfield Tram Stop Retaining Walls (W18)  
Murrayfield Tram Stop  
Track work Roseburn to Murrayfield (CH 0 to 470)



Roseburn Street Viaduct (S21A 501)  
 Roseburn Street Viaduct (S21A 502)  
 Roseburn Street Viaduct (S21A 503)  
 Roseburn Street Viaduct (S21A 504)  
 Roseburn Street Viaduct (S21A 505)  
 Murrayfield Stadium Retaining Walls (S21B)  
 Murrayfield Underpass (S21C)  
 Murrayfield Training Pitches Retaining Wall (S21D)  
 Water of Leith Bridge (S21E) (centre pier)  
 Water of Leith Bridge (S21E) (end supports)  
 Water of Leith Bridge (S21E) (Deck)  
 Baird Drive Retaining Wall (W8)  
 Balgreen Road Bridge (S22A)  
 Balgreen Road Bridge (S22B)  
 Balgreen Road Retaining Walls (W9)  
 Track work Murrayfield to Balgreen (CH 470 to 1476)  
 Jenners Substation

*Intermediate Section 5B*

E & M Installation 5B  
 Carrick Knowe Bridge (S23)  
 Track work Balgreen to Saughton (CH 0 to 1160)  
 Track work Balgreen to Saughton (CH 1160 to 1690)  
 Retaining Wall W500  
 Balgreen Tram Stop  
 Saughton Tram Stop  
 South Gyle Access Bridge (S26)  
 Bankhead Drive Retaining Wall (W11)  
 Bankhead Tram Stop  
 Track work Saughton to Bankhead (CH 1690 to 2950)  
 Track work Bankhead to Edinburgh Park Station (CH 2950 to 3740)  
 Edinburgh Park Station Tram Stop  
 Track work Edinburgh Park Station to Central (CH 3740 to 4594)  
 Edinburgh Park Central Tram Stop  
 Bankhead Sub Station

*Intermediate Section 5C*

E & M Installation 5C  
 Gyle Retaining Wall (W19)  
 Track work Edinburgh Park to Gyle (CH 0 to 760)  
 A8 Underpass (W28) Phase 1  
 A8 Underpass (W28) Phase 2  
 A8 Underpass (W28) Phase 3  
 A8 Underpass (W28) Phase 4  
 Edinburgh Gateway  
 Mini Test Track  
 Track work Gyle to Depot (CH 760 to 1322)  
 Depot Access Bridge (S32)  
 Track work Depot to Gogarburn (CH 1322 to 1884)  
 Gogarburn Tram Stop

*Intermediate Section 6A*

E & M Installation 6A  
Depot Building  
Track work

*Intermediate Section 7A*

E & M Installation 7A  
Track work Gogar Landfill Site (Ch 0 to 400)  
Track work Gogarburn To Ingliston (CH 400 to 800)  
Track work Gogarburn To Ingliston (CH 800 to 1750)  
Ingliston Tram Stop  
Track works Ingliston to Airport (CH 1750 to 2583)  
Airport Tram Stop  
Ingliston Sub Station

**On-Street Works**

*Intermediate Section 1C*

E & M Installation 1C  
York Place Ch 680 to 1070  
St Andrew Square Ch 1027 to 1171  
St Andrew Square (south) Princes St East (Ch  
1150 to 1370)

St Andrew Square North  
St Andrew Square South  
St Andrew Square West

Picardy Place Temporary Tram Stop  
Cathedral Sub Station  
St Andrew Square Tram Stop  
Princes Street Tram Stop

*Intermediate Section 1D*

E & M Installation 1D

Shandwick Place Phase 1  
Shandwick Place Phase 2  
Shandwick Place Phase 3  
Shandwick Place Phase 4  
Shandwick Place Phase 5  
Shandwick Place Phase 6

Haymarket Phase 1  
Haymarket Phase 2  
Haymarket Phase 3  
Haymarket Phase 4  
Haymarket Phase 5  
Haymarket Phase 6/1  
Haymarket Phase 6/2  
Haymarket Phase 6/3  
Haymarket Phase 6/4  
Haymarket Phase 6/5

Shandwick Place Tram Stop

## Prioritised Works

Works commenced on 3 May 2011 following the agreement of the form of MoV 4, with the exception of the mini test track and the Depot external works which recommenced on 4 April 2011 and the works on Princes Street which has been postponed from 3 May 2011 to 4 July 2011 and is now programmed to commence on 19 September 2011 following CEC's instruction in this regard.

### Princes Street

The Programme is based on the programme assumption that the whole of Princes Street shall be available from 19 September 2011. With traffic management enabling works being undertaken in June, August and September 2011.

Further, there is no allowance in the Programme for the discovery of any Utilities which require to be diverted or in respect of which protective works are required to allow the completion of the Princes Street remedial works and / or be required to carry out subsequent execution of diversion or protective works associated with any Utilities (as defined in the Infraco Contract) apparatus or delay resulting therefrom.

### Scope

#### 1. Princes Street Road/Rail Joint – Enhanced Design

The works involve the removal and replacement of bituminous surfacing adjacent to the rails on Princes Street with coloured concrete to try and match the adjacent asphalt road surface. All road markings, road studs and areas of Antiskid/Coloured Surfacing within the areas that are affected by the works will be replaced / reinstated.

The length of the works is as detailed below.

#### Inbound Track (East Bound Carriageway)

- Section 1C Chainage 12 1370 - Chainage 12 1976
- Section 1D Chainage 13 0000 - Chainage 13 0380

#### Outbound Track (West Bound Carriageway)

- Section 1C Chainage 12 1374 - Chainage 12 1980
- Section 1D Chainage 13 0000 - Chainage 13 0380

September 2011: Works will commence on the tram tracks on the north and south side of Princes Street, involving planing to a depth of 250mm along the entirety of the street with planing machines working from both ends. Work will subsequently be carried out to infill the area around the tram rails with reinforced concrete. The south side footpath will remain open throughout the remedial works.

End November 2011: All work on Princes Street will cease for the duration of the Christmas/New Year shopping season and the areas where construction has not been completed will be temporarily surfaced and the site compound will be removed. Princes Street will remain pedestrianised.

January 2012: Work will recommence on Princes Street to complete the reinforcement of the outstanding section of tram track and carry out ancillary work, erecting overhead line poles, and associated equipment and to install the street furniture at the tram stop.

Early July 2012: Target completion date.

## 2. OLE Works & Street Lighting

OLE Foundations within the section from Hanover Street to Waverley Junction (7 nr) and South Charlotte Street to Lothian Road (4 nr) will be completed. Note there are utility/basement/design conflicts associated with these foundations that require resolution. All OLE poles will be erected and street lighting installed.

## 3. Tram Stop

The tramstop finishes will be completed but no furniture including the shelter, PID, bins etc will be installed at this time. The outstanding furniture etc will be installed when the catenary wires are installed as shown on the Programme.

## 4. Scottish Water

Completion of works from the original phase of construction works will be undertaken and includes provision of additional crossing due to OLE conflict. The pipework is in place and only the connection has to be completed.

## 5. BT

BT remedial works in the area of South St David Street will be completed.

## 6. Chambers

The remedial works will commence after 19 September 2011 and be completed.

## 7. Finishes

All outstanding works to footways, pedestrian barrier, signs and track drainage will be completed.

### Haymarket Viaduct

The Track is to be constructed from the tangent point at the end of the straight section of track at the eastern end of Haymarket Viaduct to the tangent point at inbound track (Ch 20 0260) and the tangent point at outbound track (Ch 20 0207) and the road fully reinstated. Prioritised Works to Haymarket Viaduct is restricted to that necessary to lay the tracks including the concrete infill of the Rheda City track construction. (N.B. construction work on track curves must start and finish at tangent points).

Although the track bed is constructed in the second phase of traffic management, a third phase of traffic management is required (that can only take place after phases 1 & 2) to complete the outbound track (Ch 20 0207 to 20 0260) that runs in Haymarket Yards. This third phase is not part of the Prioritised Works.

### Depot Access Bridge

Construction is complete.

### The Depot

Internal work on the Depot Building continues. External works recommenced on 4 April 2011.

The Depot Building will be available to take delivery of up to the first five trams from 15 October 2011 following the issue by tie of a partial completion certificate in respect of the Depot Building. The trams will be unloaded on track 15 and stabled inside the Depot Building. The unloading and shunting activities of each tram into the Depot Building shall be within

reasonable times agreed between BB, Siemens and CAF to minimise the disruption of the Prioritised Works. The Programme assumes that tie/CEC shall provide CAF with adequate notice to permit delivery of Trams in accordance with the Programme.

The works in the Depot area to the east of the Depot Access Bridge that become redundant once the Edinburgh Gateway is instructed have been deleted from the Programme and hence "Section A" has been redefined in MoV 4. The Depot (excluding area east of Depot Access Bridge) will be available to take delivery of any further trams from 16 December 2011 following the issue by tie of a completion certificate in respect of Section A. Note warranty period commences with the issue of the sectional completion certificate. This will involve handover of Depot and commencement of handover procedures with the Operator.

To create a Programme that represents a complete scope of works, provisional activities have been added to represent what may require construction under the Edinburgh Gateway. The duration and logic applied to these activities is provisional only. The actual impact of the Edinburgh Gateway on the Programme can only be determined once the works are instructed and the appropriate IFC drawings are available.

#### Mini Test Track

To achieve the shortest programme period the mini test track constitutes a single track on the inbound track from Ch 53 1230 to 53 1800. These locations are determined by the OHLE design. This track will be connected to the depot via the depot west entrance switch. A temporary Overhead Catenary System will be installed using the permanent (as originally designed) back stay at Ch 53 1749 at the west end and a new back stay to be installed around Ch 53 1260 in the east end of the mini test track. This will result in an energised and usable track of about 400m. The period reflected in the Programme includes a 2 week period for energisation tests. A temporary Overhead Catenary System will be designed and implemented on the east side of the Depot Access Bridge to enable all tracks within the Depot to be energised. The additional costs associated with implementing this temporary Overhead Catenary System to accommodate energisation of the mini test track will need to be agreed. This temporary Overhead Catenary System to the east of the section feeder location Ch 53 1310 will be replaced with the line of route design. Overhead Catenary System to the west will remain unaffected in a permanent line of route design.

The Edinburgh Gateway works also prevent the installation of the final radio mast in time to be available for the operation of the mini test track.

The Programme considers that all works adjacent to the mini test track and the final works on the mini test track area will be executed under normal construction conditions, without any restrictions. Therefore this track cannot be permanently used for testing purposes until the final installation is completed. Further, it will not be possible to complete all Site Commissioning Tests in respect of the Trams on the mini test track.

#### A8 Underpass

Phases 1, 2 and 4 recommenced on 3 May 2011 and construction continues.

#### Auxiliary Items

The Programme includes for the following auxiliary items:

- Additional Testing in Murrayfield Corridor
- Water of Leith Sewer Lining Works
- Demolition of Plots 97/102
- Testing of Contamination
- Advanced Site investigation Works in Section 1C/1D

## On-Street Works

The remaining on-street works, from the terminal point in York Place to Haymarket Station, are programmed to commence on 3 October 2011 following the signing of MoV5 and after CEC has issued to the Parties the Funding Satisfaction Date Letter.

The on-street works are programmed to be undertaken in 3 elements as follows;

- York Place / St Andrew Square – comprises all works between the terminal point in York Place (assumed to be Ch 12 0680 [west of Broughton Street]) and the eastern end of the works already constructed in Princes Street (Ch 12 1370).
- Shandwick Place – comprises all works between the western end of the works already constructed in Princes Street (Ch 13 0376) and Palmerston Place (Ch 13 0960).
- Haymarket – comprises all works between Palmerston Place (Ch 13 0960) and Haymarket Station (Ch 13 1250)<sup>1</sup>.

Each element comprises a number of traffic management phases which will be executed in a predetermined sequence. These phases have been designed to not only maintain traffic flows but also to enable the efficient construction of the works. Due to traffic management constraints there are inter-dependencies between the phases in the Haymarket element and the Shandwick Place element. The Programme assumes that this traffic Management phasing will not require modification and the works can therefore be constructed as planned and programmed.

The York Place / St Andrew Square element is programmed to commence in February 2012 and upon completion of the Princes Street works between Waverley (Ch 12 1370) and St David Street South (Ch 13 1478).

The Shandwick Place element is programmed to commence in February 2012 and on completion of the Princes Street works between Lothian Road (Ch 13 0376) and South Charlotte Street (Ch 13 0268).

The Haymarket element is programmed to commence on 3 October 2011 following the signing of MoV5 and after CEC has issued to the Parties the Funding Satisfaction Date Letter.

The Programme assumes that the works on the York Place / St Andrew Square and Shandwick Place elements can commence whilst the work in Princes Street between South Charlotte Street and South St David Street continues. No traffic modelling has currently been performed to confirm this assumption and no agreement has been reached with CEC, Lothian Busses and Lothian and Borders Police.

There is no allowance in the Programme for the discovery of any Utilities which require to be diverted or in respect of which protective works are required to allow the completion of the On Street Works in accordance with this Agreement and / or be required to carry out subsequent execution of diversion or protective works associated with any Utilities (as defined in the Infraco Contract) apparatus or delay resulting therefrom. There is no allowance in the Programme for amendments to and construction of changes to the On Street Design Information to accommodate utilities, working alongside utility companies and their contractors (see designated working areas below).

<sup>1</sup> Note that Haymarket Station (Ch 13 1250) is the same as Haymarket Viaduct (Ch 20 0000), [Section 1D and Section 2A have different Chainages]

### **Off-Street Works (and Intermediate Section 1A enabling Works)**

The remaining Off-Street Works, from Haymarket Station to Edinburgh Airport, are programmed to commence on 3 October 2011 following the signing of MoV5 and after CEC has issued to the Parties the Funding Satisfaction Date Letter.

The following preconditions and assumptions have been made;

#### **Intermediate Section 1A**

The Programme assumes that tie/ CEC provides a licence obtained from Forth Ports to recommence the enabling works at Lindsay Road and Tower Place Bridge in October 2011.

#### **Intermediate Section 2A**

The track work in Section 2A is programmed to continue after the Prioritised Works in Haymarket Yards have been completed. The sub-station, crew relief facility, tram stop and viaduct finishes are programmed so as not to conflict with the track work.

#### **Intermediate Section 5A**

The construction works in Section 2 and 5 are subject to Network Rail approval.

#### **Intermediate Section 5B and 5C**

The structures at Edinburgh Park and Carrick Knowe will be completed on the recommencement of the works. The remaining construction phases of the A8 Underpass will continue as the completion of the Prioritised Works will allow. A new structure and retaining wall are to be constructed at South Gyle Access. Track work will commence once the bridgeworks are sufficiently advanced to provide continuity of work for the resources available / deployed.

The alignment of the "mini test track" is being constructed to that required for the Edinburgh Gateway. In addition the turnout for the Depot entry east has been procured to the Edinburgh Gateway design. All works, including those to the currently approved design, in the "foot print" of Edinburgh Gateway have been removed from the Programme and been replaced with provisional activities. The programming of these works can only be established once an instruction is given as to whether Edinburgh Gateway is to be built and the actual design for this area is thus know.

#### **Intermediate Section 7A**

The Programme assumes that CEC / tie can obtain a licence from Edinburgh Airport Limited for the remaining works.

ULE90130 SDS Edinburgh Tram V75		SDS Design Programme						12-Sep-11 17:15																		
Activity ID	Activity Name	Original Duration	V75 Start	V75 Finish	V74 Start	V74 Finish	Variance - V74	July 2011	A	S	O	N	D	J	F											
ULE90130 SDS Edinburgh Tram V75								0	1	2	3	0	1	2	0	1	2	0	1	2	0	1	2	0	1	1
MS - Programme Key Milestones								101																		
MS - Programme Key Milestones								101																		
MS - Programme Key Milestones								101																		
SDS Key Milestones								69																		
Detail Design Submittals to tie/BSC								0																		
SDS030	Complete All Detail Design Submittals to BSC	0	17-Oct-11	17-Oct-11	14-Sep-11	14-Sep-11	-22																			
Issue for Construction Drawings to BSC								0																		
SDS109820	Complete All IFC Submittals to BSC	0	19-Jan-12	19-Jan-12	03-Jan-12	03-Jan-12	-13																			
CEC Section Approval								76																		
SDS110140	CEC Approval of Section 2A	0	31-Aug-11	31-Aug-11*	08-Aug-11	08-Aug-11	-15																			
SDS109440	CEC Approval of Section 7	0	29-Sep-11	29-Sep-11	30-Sep-11	30-Sep-11	1																			
SDS109430	CEC Approval of Section 5	0	24-Nov-11	24-Nov-11	14-Nov-11	14-Nov-11	-7																			
SDS109420	CEC Approval of Section 1	0	15-Dec-11	15-Dec-11	15-Dec-11	15-Dec-11	0																			
EPWA - ENGINEERING Project Wide Activities								1374																		
EPWA - ENGINEERING Project Wide Activities								1374																		
EPWA - ENGINEERING Project Wide Activities								1374																		
System Wide IDC								808																		
A41851	System Engineering Input to System Wide IDC Process	740	27-Aug-08 A	28-Oct-11	27-Aug-08	26-Oct-11	-1																			
A41771	System Wide IDC	709	13-Oct-08 A	28-Oct-11	13-Oct-08	26-Oct-11	-1																			
A41901	Support to System Wide IDC Process	658	05-Jan-09 A	28-Oct-11	05-Jan-09	26-Oct-11	-1																			
Track								139																		
DCR0237 - Floating Track Design								139																		
SDS107210	Design	87	03-May-11 A	12-Oct-11	03-May-11	06-Sep-11	-26																			
SDS109330	Receive Workshop Drawings from Siemens	0	05-Aug-11 A	05-Aug-11	05-Aug-11	05-Aug-11	0																			
SDS108630	Receive Noise & Vibration Floating Slab Criteria from Siemens	0	25-Aug-11 A	16-Sep-11*	05-Aug-11	05-Aug-11	-14																			
SDS109380	Confirm Noise and Vibration Criteria Suitable for SDS Design	0	12-Oct-11	08-Sep-11	08-Sep-11	08-Sep-11	-22																			
SDS109340	Issue to CEC for Technical Approval	19	12-Oct-11	09-Nov-11	08-Sep-11	06-Oct-11	-22																			
SDS109350	CEC Technical Approval Period	3	09-Nov-11	14-Nov-11	06-Oct-11	11-Oct-11	-22																			
SDS109360	Prepare IFC Drawings	0	14-Nov-11	12-Oct-11	12-Oct-11	12-Oct-11	-23																			
SDS107220	Issue For Construction Drawings - DCR0237 Floating Track Design	78	29-Jun-11 A	17-Oct-11	29-Jun-11	14-Sep-11	-22																			
Modelling								67																		
DCR0265 Tram Turnback Strategy								67																		
SDS109030	Review Revised Scope	12	29-Jun-11 A	15-Jul-11 A	29-Jun-11	18-Jul-11	1																			
SDS108990	Receive BSC Comments	0	25-Jul-11 A	01-Aug-11	01-Aug-11	01-Aug-11	5																			
SDS108570	Update to BSC Comments	5	26-Jul-11 A	01-Aug-11 A	26-Jul-11	01-Aug-11	0																			
SDS108670	Prepare Drawings for Tram/Traffic Signalling to Reflect Strategy Paper	5	26-Jul-11 A	01-Aug-11 A	26-Jul-11	01-Aug-11	0																			
SDS105390	Issue For Information - DCR0265 Tram Turnback Strategy	0	04-Aug-11 A	01-Aug-11	01-Aug-11	01-Aug-11	-3																			
SDS105392	Siemens Update Signal Design	10	05-Aug-11 A	14-Sep-11	14-Sep-11	14-Sep-11	0																			
SDS105422	CEC Approval of Signal Design	5	15-Sep-11	22-Sep-11	22-Sep-11	22-Sep-11	0																			
SDS105402	Update Ducting and Drainage Drawings	5	22-Sep-11	29-Sep-11	29-Sep-11	29-Sep-11	0																			
SDS105412	Issue for Construction - DCR0265 Tram Turnback Strategy	0	29-Sep-11	17-Oct-11	17-Oct-11	17-Oct-11	-22																			
Revised Traffic Modelling								65																		
A570230	Receive Instruction to Proceed from BSC	0	18-Jul-11 A	01-Aug-11	01-Aug-11	01-Aug-11	9																			
SDS109450	Review and Revise LINSIG Traffic Models	14	18-Jul-11 A	01-Sep-11	18-Jul-11	05-Aug-11	-16																			
A570560	Update LINSIG Traffic Models With CEC Comments	2	15-Aug-11 A	26-Aug-11 A	15-Aug-11	16-Aug-11	-8																			
A570530	Issue Design to CEC for Review	0	01-Sep-11	08-Sep-11	05-Aug-11	05-Aug-11	-16																			
A570540	CEC Review Period of LINSIG Traffic Models	5	01-Sep-11	08-Sep-11	08-Aug-11	12-Aug-11	-16																			
A570510	Prepare Revised TRANSYT Traffic Models	14	08-Sep-11	29-Sep-11	08-Aug-11	26-Aug-11	-21																			
A570550	Receive CEC Comments of LINSIG / VISSIM Modelling	0	08-Sep-11	12-Aug-11	12-Aug-11	12-Aug-11	-16																			
A570180	Issue TRANSYT Traffic Models Design to CEC for Review	0	29-Sep-11	26-Aug-11	26-Aug-11	26-Aug-11	-21																			

■ Remaining Level of Effort
 ■ Actual Work
 ■ Critical Remaining ...
 ■ Actual Level of Effort
 ■ Remaining Work
 ◆ Milestone

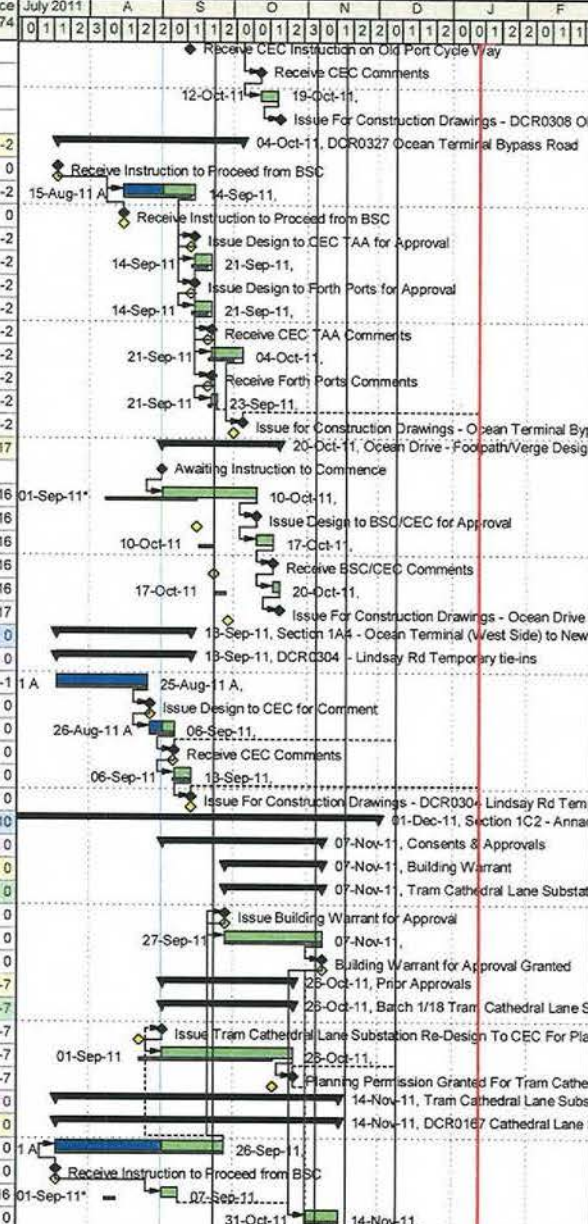


ULE90130 SDS Edinburgh Tram V75		SDS Design Programme					12-Sep-11 17:15												
Activity ID	Activity Name	Original Duration	V75 Start	V75 Finish	V74 Start	V74 Finish	Variance -V74	Gantt Chart (July 2011 to Feb 2012)											
A570190	CEC Review Period of TRANSYT Traffic Models	9	29-Sep-11	13-Oct-11	30-Aug-11	12-Sep-11	-21	[Gantt bar: 29-Sep-11 to 13-Oct-11]											
A570200	Receive CEC Comments of TRANSYT Traffic Models	0		13-Oct-11		12-Sep-11	-21	[Milestone: 13-Oct-11]											
A570210	Update TRANSYT Traffic Models With CEC Comments	2	13-Oct-11	17-Oct-11	13-Sep-11	14-Sep-11	-21	[Gantt bar: 13-Oct-11 to 17-Oct-11]											
A570220	Issue Revised Traffic Models to BSC/CEC	0		17-Oct-11		14-Sep-11	-21	[Milestone: 17-Oct-11]											
A570520	Final Approval of Traffic Modelling by CEC	0		17-Oct-11		14-Sep-11	-21	[Milestone: 17-Oct-11]											
<b>System Engineering</b>		21	06-Jun-11 A	04-Jul-11 A	06-Jun-11	04-Jul-11	0	[Gantt bar: 04-Jul-11 A, System Engineering]											
<b>Verification and Validation</b>		21	06-Jun-11 A	04-Jul-11 A	06-Jun-11	04-Jul-11	0	[Gantt bar: 04-Jul-11 A, Verification and Validation]											
A11110	SDDR Support	20	06-Jun-11 A	04-Jul-11 A	06-Jun-11	04-Jul-11	0	[Gantt bar: 04-Jul-11 A, SDDR Support]											
<b>Systems Assurance</b>		1374	03-Jul-06 A	22-Nov-11	03-Jul-06	22-Nov-11	0	[Gantt bar: 16-Aug-11 A, Systems Assurance Management]											
<b>Systems Assurance Management</b>		1304	03-Jul-06 A	16-Aug-11 A	03-Jul-06	16-Aug-11	0	[Gantt bar: 16-Aug-11 A, Systems Assurance Management]											
SDS66850	Systems Assurance Management	1222	03-Jul-06 A	16-Aug-11 A	03-Jul-06	16-Aug-11	0	[Gantt bar: 16-Aug-11 A, Systems Assurance Management]											
<b>System Safety</b>		804	30-Sep-08 A	22-Nov-11	30-Sep-08	22-Nov-11	0	[Gantt bar: 16-Aug-11 A, System Safety]											
<b>DDCS</b>		20	07-Jun-11 A	04-Jul-11 A	07-Jun-11	04-Jul-11	0	[Gantt bar: 04-Jul-11 A, DDCS]											
SDS74550	Detailed Design Case for Safety Approval Period	19	07-Jun-11 A	04-Jul-11 A	07-Jun-11	04-Jul-11	0	[Gantt bar: 04-Jul-11 A, DDCS]											
<b>Safety Analysis</b>		804	30-Sep-08 A	22-Nov-11	30-Sep-08	22-Nov-11	0	[Gantt bar: 16-Sep-11, On Street Trackform and Line 2 Crossings]											
SDS74840	Support to BSC with Closure of Hazard Log	759	30-Sep-08 A	22-Nov-11	30-Sep-08	22-Nov-11	0	[Gantt bar: 16-Sep-11, On Street Trackform and Line 2 Crossings]											
<b>On Street Trackform and Line 2 Crossings</b>		72	09-Jun-11 A	16-Sep-11	09-Jun-11	16-Aug-11	-23	[Gantt bar: 16-Sep-11, On Street Trackform and Line 2 Crossings]											
SDS109000	Additional Drawings Requested by CEC	32	09-Jun-11 A	26-Jul-11 A	09-Jun-11	26-Jul-11	1	[Gantt bar: 26-Jul-11 A, Additional Drawings Requested by CEC]											
SDS108390	Issue to BSC/ CEC for IDR/Technical Approval	0		26-Jul-11 A		01-Aug-11	4	[Milestone: 26-Jul-11 A]											
SDS108930	Issue to CEC for Prior Approval	0		26-Jul-11 A		01-Aug-11	4	[Milestone: 26-Jul-11 A]											
SDS108430	IDR/Technical Approval Period	9	27-Jul-11 A	09-Aug-11 A	27-Jul-11	09-Aug-11	0	[Gantt bar: 09-Aug-11 A, IDR/Technical Approval Period]											
SDS108940	BSC Approval Period	13	27-Jul-11 A	15-Aug-11 A	27-Jul-11	15-Aug-11	0	[Gantt bar: 15-Aug-11 A, BSC Approval Period]											
SDS108440	Receive IDR/TAA Comments	0		09-Aug-11 A		09-Aug-11	0	[Milestone: 09-Aug-11 A]											
SDS108450	Update to Comments	2	09-Aug-11 A	10-Aug-11 A	09-Aug-11	10-Aug-11	0	[Gantt bar: 10-Aug-11 A, Update to Comments]											
SDS108950	Receive BSC Comments	0		15-Aug-11 A		15-Aug-11	0	[Milestone: 15-Aug-11 A]											
SDS108980	Update for CEC Final Comments	2	15-Aug-11 A	16-Sep-11	15-Aug-11	16-Aug-11	-21	[Gantt bar: 16-Sep-11, Update for CEC Final Comments]											
SDS109920	CEC Final Approval	0		02-Sep-11*				[Milestone: 02-Sep-11*]											
SDS108460	Issue For Construction Drawings- On Street Trackform	0		16-Sep-11		16-Aug-11	-21	[Milestone: 16-Sep-11]											
<b>Track Improvement Layer at Dock Bridge</b>		56	26-Aug-11 A	24-Oct-11	04-Aug-11	30-Sep-11	-15	[Gantt bar: 24-Oct-11, Track Improvement Layer at Dock Bridge]											
SDS108320	Receive Details of Rail Expansion and Transition Details from BSC	5	26-Aug-11 A	05-Sep-11	04-Aug-11	11-Aug-11	-14	[Gantt bar: 05-Sep-11, Receive Details of Rail Expansion and Transition Details from BSC]											
SDS108330	Design Interface of Bridge with TIL	14	05-Sep-11	26-Sep-11	11-Aug-11	02-Sep-11	-14	[Gantt bar: 26-Sep-11, Design Interface of Bridge with TIL]											
SDS108340	Issue Designs for BSC Comment	0		27-Sep-11		05-Sep-11	-14	[Milestone: 27-Sep-11]											
SDS108530	BSC Review Period	5	27-Sep-11	04-Oct-11	05-Sep-11	12-Sep-11	-14	[Gantt bar: 04-Oct-11, BSC Review Period]											
SDS108350	Incorporate Comments	5	04-Oct-11	11-Oct-11	12-Sep-11	19-Sep-11	-14	[Gantt bar: 11-Oct-11, Incorporate Comments]											
SDS108410	Issue to CEC for Approval	0		11-Oct-11		19-Sep-11	-14	[Milestone: 11-Oct-11]											
SDS108520	CEC Approval Period	5	11-Oct-11	18-Oct-11	19-Sep-11	26-Sep-11	-14	[Gantt bar: 18-Oct-11, CEC Approval Period]											
SDS108540	Incorporate Comments and Prepare IFC Drawings	4	18-Oct-11	24-Oct-11	26-Sep-11	30-Sep-11	-14	[Gantt bar: 24-Oct-11, Incorporate Comments and Prepare IFC Drawings]											
SDS108420	Issue For Construction Drawings - Track Improvement Layer at Dock Bridge	0		24-Oct-11		30-Sep-11	-14	[Milestone: 24-Oct-11]											
<b>Building Mounted Lighting</b>		18	07-Sep-11	30-Sep-11				[Gantt bar: 30-Sep-11, Building Mounted Lighting]											
SDS110650	CEC Review	9	07-Sep-11*	20-Sep-11				[Gantt bar: 20-Sep-11, CEC Review]											
SDS110550	Meet With Property Owners to Confirm Routing of Supplies	0		21-Sep-11*				[Milestone: 21-Sep-11*]											
SDS110560	Prepare Drawings	5	22-Sep-11*	29-Sep-11				[Gantt bar: 29-Sep-11, Prepare Drawings]											
SDS110570	Issue Revised IFC Drawings - Building Mounted Lighting	0		30-Sep-11*				[Milestone: 30-Sep-11*]											
<b>PWINC - 13 Redesign to Avoid Utilities</b>		44	22-Jul-11 A	01-Nov-11				[Gantt bar: 01-Nov-11, PWINC - 13 Redesign to Avoid Utilities]											
<b>OLE</b>		44	22-Jul-11 A	01-Nov-11				[Gantt bar: 01-Nov-11, OLE]											
SDS110460	Redesign of 6 Number Bases at Clifton Terrace	5	22-Jul-11 A	25-Oct-11				[Gantt bar: 25-Oct-11, Redesign of 6 Number Bases at Clifton Terrace]											
SDS110470	Issue Revised IFC Drawings - Revised OLE Bases	0		25-Oct-11				[Milestone: 25-Oct-11]											
SDS110520	BSC / CEC Approval Period	5	25-Oct-11	01-Nov-11				[Gantt bar: 01-Nov-11, BSC / CEC Approval Period]											
SDS110530	Final Construction Issue of OLE Bases	0		01-Nov-11				[Milestone: 01-Nov-11]											
<b>Track Work</b>		27	31-Aug-11 A	07-Oct-11				[Gantt bar: 07-Oct-11, Track Work]											
SDS110490	Revised Track Formation Design that deals with Localised Shadow Utilities	20	31-Aug-11 A	30-Sep-11				[Gantt bar: 30-Sep-11, Revised Track Formation Design that deals with Localised Shadow Utilities]											

■ Remaining Level of Effort   
 ■ Actual Work   
 ■ Critical Remaining ...  
■ Actual Level of Effort   
 ■ Remaining Work   
 ◆ Milestone



Activity ID	Activity Name	Original Duration	V75 Start	V75 Finish	V74 Start	V74 Finish	Variance -V74	July 2011	A	S	O	N	D	J	F	
SDS110420	Receive CEC Instruction on Old Port Cycle Way	0	12-Sep-11*					0	1	2	3	0	1	2	3	
A570640	Receive CEC Comments	0		12-Oct-11												
A570650	SDS Incorporate CEC Comments & Prepare IFC Drawings	5	12-Oct-11	19-Oct-11												
SDS110410	Issue For Construction Drawings - DCR0308 Old Port Rd Footway	0		20-Oct-11												
<b>DCR0327 Ocean Terminal Bypass Road</b>																
A570340	Receive Instruction to Proceed from BSC	0	18-Jul-11 A	04-Oct-11	18-Jul-11	30-Sep-11	-2									
A570290	Design of Ocean Terminal Bypass Road	19	15-Aug-11 A	14-Sep-11	15-Aug-11	12-Sep-11	-2									
A570570	Receive Instruction to Proceed from BSC	0	15-Aug-11 A		15-Aug-11		0									
A570240	Issue Design to CEC TAA for Approval	0		14-Sep-11		12-Sep-11	-2									
A570270	CEC TAA Approval Period	5	14-Sep-11	21-Sep-11	13-Sep-11	19-Sep-11	-2									
A570300	Issue Design to Forth Ports for Approval	0		14-Sep-11		12-Sep-11	-2									
A570330	Forth Ports Approval Period	5	14-Sep-11	21-Sep-11	13-Sep-11	19-Sep-11	-2									
A570250	Receive CEC TAA Comments	0		21-Sep-11		19-Sep-11	-2									
A570260	SDS Incorporate CEC TAA Comments & Prepare IFC Drawings	8	21-Sep-11	04-Oct-11	20-Sep-11	30-Sep-11	-2									
A570310	Receive Forth Ports Comments	0		21-Sep-11		19-Sep-11	-2									
A570320	SDS Incorporate Forth Ports Comments & Prepare IFC Drawings	2	21-Sep-11	23-Sep-11	20-Sep-11	21-Sep-11	-2									
A570280	Issue for Construction Drawings - Ocean Terminal Bypass Road	0		04-Oct-11		30-Sep-11	-2									
<b>Ocean Drive - Footpath/Verge Design</b>																
A570670	Awaiting Instruction to Commence	0		31-Aug-11			-17									
A570580	Ocean Drive Footpath/Verge Design	26	01-Sep-11*	10-Oct-11	08-Aug-11	15-Sep-11	-16									
A570590	Issue Design to BSC/CEC for Approval	0		10-Oct-11		15-Sep-11	-16									
A570600	BSC/CEC Approval Period	5	10-Oct-11	17-Oct-11	16-Sep-11	22-Sep-11	-16									
A570610	Receive BSC/CEC Comments	0		17-Oct-11		22-Sep-11	-16									
A570620	SDS Incorporate BSC/CEC Comments & Prepare IFC Drawings	3	17-Oct-11	20-Oct-11	23-Sep-11	27-Sep-11	-16									
SDS110380	Issue For Construction Drawings - Ocean Drive Footpath/Verge Design	0		20-Oct-11		28-Sep-11	-17									
<b>Section 1A4 - Ocean Terminal (West Side) to Newhaven</b>																
<b>DCR0304 - Lindsay Rd Temporary tie-ins</b>																
SDS107450	Design	28	18-Jul-11 A	25-Aug-11 A	18-Jul-11	25-Aug-11	-1									
A570140	Issue Design to CEC for Comment	0		26-Aug-11 A		26-Aug-11	0									
A570150	CEC Review Period	5	26-Aug-11 A	06-Sep-11	26-Aug-11	05-Sep-11	0									
A570160	Receive CEC Comments	0		06-Sep-11		05-Sep-11	0									
A570170	SDS Incorporate CEC Comments & Prepare IFC Drawings	5	06-Sep-11	13-Sep-11	05-Sep-11	12-Sep-11	0									
SDS107460	Issue For Construction Drawings - DCR0304 Lindsay Rd Temp Tie ins	0		13-Sep-11		13-Sep-11	0									
<b>Section 1C2 - Annadale Street to York Place (Picardy Place)</b>																
<b>Consents &amp; Approvals</b>																
<b>Building Warrant</b>																
<b>Tram Cathedral Lane Substation DCR0167</b>																
A28160	Issue Building Warrant for Approval	0	27-Sep-11	07-Nov-11	27-Sep-11	07-Nov-11	0									
A28180	Building Warrant for Approval Period	28	27-Sep-11	07-Nov-11	27-Sep-11	07-Nov-11	0									
A28170	Building Warrant for Approval Granted	0		07-Nov-11		07-Nov-11	0									
<b>Prior Approvals</b>																
<b>Batch 1/18 Tram Cathedral Lane Substation Re-design DCR0167</b>																
A28030	Issue Tram Cathedral Lane Substation Re-Design To CEC For Planning Permission	0	01-Sep-11	26-Oct-11	22-Aug-11	17-Oct-11	-7									
A41150	Batch 1/18 Formal Approval Period	38	01-Sep-11	26-Oct-11	22-Aug-11	17-Oct-11	-7									
A28100	Planning Permission Granted For Tram Cathedral Lane Substation	0		26-Oct-11		17-Oct-11	-7									
<b>Tram Cathedral Lane Substation</b>																
<b>DCR0167 Cathedral Lane Substation Misalignment</b>																
SDS105240	Detailed Design	47	18-Jul-11 A	26-Sep-11	18-Jul-11	26-Sep-11	0									
SDS109040	Receive Instruction to Proceed from BSC	0		18-Jul-11 A		18-Jul-11	0									
SDS110370	Earthing & Bonding Design	5	01-Sep-11*	07-Sep-11	08-Aug-11	12-Aug-11	-16									
SDS108890	IDC	9	31-Oct-11	14-Nov-11	31-Oct-11	14-Nov-11	0									



■ Remaining Level of Effort   
 ■ Actual Work   
 ■ Critical Remaining ...  
■ Actual Level of Effort   
 ■ Remaining Work   
 ◆ Milestone

Activity ID	Activity Name	Original Duration	V75 Start	V75 Finish	V74 Start	V74 Finish	Variance - V74	July 2011	A	S	O	N	D	J	F
SDS106630	Prepare IFC Drawings	5	07-Nov-11	14-Nov-11	07-Nov-11	14-Nov-11	0								
SDS106650	Issue For Construction Drawings - Redesign Cathedral Lane Subn to suit Henderson Global...	0		14-Nov-11		14-Nov-11	0								
DCR0278 Picardy Place Redesign															
SDS107010	Detailed Design	140	20-May-11 A	01-Dec-11	20-May-11	15-Dec-11	10								
SDS109300	Optioneering Review	119	20-May-11 A	01-Nov-11	01-Nov-11	08-Nov-11	4								
SDS108060	Prepare Planning Drawings	11	11-Jul-11 A	26-Jul-11 A	11-Jul-11	26-Jul-11	-1								
SDS109310	Instruction to Proceed from BSC/CEC	16	26-Aug-11 A	03-Oct-11	26-Aug-11	19-Sep-11	-10								
SDS108040	Signs and Lines	0	30-Aug-11 A		27-Jul-11		-24								
SDS108050	TRCs	11	01-Sep-11	15-Sep-11	10-Aug-11	25-Aug-11	-16								
SDS108070	Traffic Signals	16	01-Sep-11	22-Sep-11	10-Aug-11	31-Aug-11	-16								
SDS110190	Instruction to Proceed from BSC/CEC	11	01-Sep-11	15-Sep-11	10-Aug-11	25-Aug-11	-16								
SDS108080	Stage 2 RSA	0	01-Sep-11*		10-Aug-11		-16								
SDS108080	Stage 2 RSA	22	03-Oct-11	01-Nov-11	13-Oct-11	11-Nov-11	8								
SDS108960	Issue Design Package for Prior Approval	0		03-Oct-11		19-Sep-11	-10								
SDS107030	Planning Approval	38	04-Oct-11	24-Nov-11	20-Sep-11	10-Nov-11	-10								
SDS107020	Issue Design Package to CEC for Roads Technical Approval	0		01-Nov-11		14-Nov-11	8								
SDS107050	CEC Roads Approval Period	19	02-Nov-11	28-Nov-11	15-Nov-11	13-Dec-11	11								
SDS107060	Prepare IFC Package	3	28-Nov-11	01-Dec-11	13-Dec-11	15-Dec-11	10								
SDS104280	Issue For Construction Drawings - DCR0278 Picardy Place Redesign	0		01-Dec-11		15-Dec-11	10								
Blenheim Place Roads Design															
SDS109490	Issue Blenheim Place Roads Feasibility Design for CEC Approval	29	16-Aug-11 A	14-Sep-11	05-Aug-11	26-Aug-11	-14								
SDS109520	Instruction to Proceed from BSC/CEC	0	16-Aug-11 A		05-Aug-11		-7								
SDS109510	Update Drawings to Incorporate Planning Comments	0	01-Sep-11		12-Aug-11		-14								
SDS109480	Issue For Construction Drawings - Blenheim Place Roads Design	9	01-Sep-11	14-Sep-11	12-Aug-11	25-Aug-11	-12								
Section 1C3 - York Place to 1D															
Consents & Approvals															
Prior Approvals - York Place															
York Place Tramstop															
A570030	Issue Prior Approval Notice	36	17-Nov-11	05-Jan-12	21-Oct-11	01-Dec-11	-25								
A570050	Prior Approval Period	36	17-Nov-11	05-Jan-12	21-Oct-11	01-Dec-11	-25								
A570040	Prior Approval Granted	0		05-Jan-12		01-Dec-11	-18								
Roads, Street Lighting & Landscaping															
DCR0276 Elder Street Change															
SDS98240	Design Elder Street Change	43	03-Oct-11	01-Dec-11	13-Oct-11	15-Dec-11	10								
SDS98290	Incorporate Comments and Prepare IFC Drawings	9	03-Oct-11	17-Oct-11	13-Oct-11	26-Oct-11	7								
SDS98300	Issue for Construction Drawings - DCR0276 Elder Street Change	3	28-Nov-11	01-Dec-11	13-Dec-11	15-Dec-11	10								
DCR0264 Listed Building Consents for Dublin Street															
SDS105350	Revised Design	171	09-May-11 A	03-Jan-12	09-May-11	22-Nov-11	-29								
SDS109010	Decision Required from CEC Planners & Technical to Advise Alternatives to Listed Building ...	65	09-May-11 A	04-Aug-11 A	09-May-11	12-Aug-11	6								
SDS105320	Issue for CEC Approval	0	04-Jul-11 A		01-Aug-11		19								
SDS105310	CEC Approval Period	0	04-Aug-11 A		15-Aug-11		7								
SDS110440	Historic Scotland Meeting	56	05-Aug-11 A	26-Oct-11	15-Aug-11	07-Nov-11	8								
SDS110450	Update Drawings to Include Historic Scotland and CEC Comments	0	31-Aug-11 A												
SDS110455	LBC Approval Period	10	05-Sep-11*	19-Sep-11											
SDS105360	Update Drawings	60	19-Sep-11	16-Dec-11											
SDS105330	Issue for Construction Drawings - DCR0264 Listed Building Consents Dublin St	5	16-Dec-11	23-Dec-11	08-Nov-11	22-Nov-11	-22								
DCR0273 Junction of Mound, Princes Street and Hanover Street															
SDS109020	Receive Confirmation to Proceed on Mound Design	0	18-Jul-11 A		01-Aug-11		9								
SDS105590	Revised Design	13	18-Jul-11 A	31-Aug-11 A	18-Jul-11	04-Aug-11	-16								
SDS105560	Issue for CEC Approval	0	01-Sep-11		05-Aug-11		-17								
SDS105550	CEC Approval Period	19	01-Sep-11	29-Sep-11	05-Aug-11	02-Sep-11	-17								
SDS105600	Update Drawings	5	29-Sep-11	06-Oct-11	05-Sep-11	08-Sep-11	-17								

█ Remaining Level of Effort   
 █ Actual Work   
 █ Critical Remaining ...  
█ Actual Level of Effort   
 █ Remaining Work   
 ◆ Milestone



Activity ID	Activity Name	Original Duration	V75 Start	V75 Finish	V74 Start	V74 Finish	Variance - V74	Calendar											
								July 2011	A	S	O	N	D	J	F				
DCR0261 Roseburn Street Viaduct Curtain Walls								15-Sep-11, DCR0261 Roseburn Street Viaduct Curtain Walls											
SDS105250	CEC Prior Approval Period	37	09-May-11 A	04-Jul-11 A	09-May-11	01-Jul-11	0	04-Jul-11 A											
SDS108930	Finalise Technical Drawings	54	01-Jun-11 A	19-Aug-11 A	01-Jun-11	19-Aug-11	0	19-Aug-11 A											
SDS105300	Update Drawings With Planning Comments	5	11-Jul-11 A	15-Jul-11 A	11-Jul-11	15-Jul-11	0	15-Jul-11 A											
SDS109320	Scottish Power Access - Update Technical Drawings	19	25-Jul-11 A	19-Aug-11 A	25-Jul-11	19-Aug-11	0	19-Aug-11 A											
SDS108900	Issue for CEC Technical Approval	0	01-Aug-11 A	01-Aug-11	01-Aug-11	01-Aug-11	0	Issue for CEC Technical Approval											
SDS108910	CEC Technical Approval Period	9	01-Aug-11 A	12-Aug-11 A	01-Aug-11	12-Aug-11	0	12-Aug-11 A											
SDS108920	Update Drawings	5	15-Aug-11 A	19-Aug-11 A	15-Aug-11	19-Aug-11	0	15-Aug-11 A											
SDS105270	Issue For Construction Drawings - DCR0261 Roseburn St Curtain Walls	0	01-Aug-11 A	31-Aug-11 A	01-Aug-11	19-Aug-11	-7	Issue For Construction Drawings - DCR0261 Roseburn St Curtain Walls											
SDS105370	Prepare Final IFC Drawings for Curtain Walling	10	01-Sep-11	15-Sep-11	01-Sep-11	15-Sep-11	0	01-Sep-11											
Section 5B								05-Sep-11, Section 5B											
Sub Section Wide								05-Sep-11, Sub Section Wide											
Roads, Street Lighting & Landscaping								05-Sep-11, Roads, Street Lighting & Landscaping											
SDS108940	Propose Design for the DDA Crossing (With Possible Removal of W500)	41	31-May-11 A	29-Jul-11 A	31-May-11	29-Jul-11	-1	29-Jul-11 A											
VO88280	Issue Revised Drainage Design to CEC	0	09-Aug-11 A	09-Aug-11 A	09-Aug-11	09-Aug-11	-7	Issue Revised Drainage Design to CEC											
VO88270	CEC Approval Period	4	10-Aug-11 A	01-Sep-11	29-Jul-11	03-Aug-11	-18	01-Sep-11											
VO88290	SDS Incorporate CEC Comments	2	01-Sep-11	02-Sep-11	05-Aug-11	08-Aug-11	-17	02-Sep-11											
SDS108950	Issue Construction Drawings - Roads 5B (Inc Saughton Mains / W500)	0	05-Sep-11	05-Sep-11	09-Aug-11	09-Aug-11	-18	Issue Construction Drawings - Roads 5B (Inc Saughton Mains / W500)											
Section 5C								20-Oct-11, Section 5C											
Sub Section Wide								20-Oct-11, Sub Section Wide											
Revised Drainage at Gogarburn Lodge								20-Oct-11, Revised Drainage at Gogarburn Lodge											
SDS109560	Receive Instruction from BSC to Proceed	0	07-Jul-11 A	07-Jul-11	07-Jul-11	07-Jul-11	0	Receive Instruction from BSC to Proceed											
SDS109540	Design	21	21-Jul-11 A	14-Sep-11	21-Jul-11	18-Aug-11	-19	14-Sep-11											
VO88250	Issue Revised Drainage Design to CEC/SW	0	14-Sep-11	14-Sep-11	19-Aug-11	19-Aug-11	-16	Issue Revised Drainage Design to CEC/SW											
VO88240	CEC / SW Approval Period	19	15-Sep-11	13-Oct-11	19-Aug-11	19-Sep-11	-16	13-Oct-11											
VO88260	SDS Incorporate CEC/ SW Comments	5	13-Oct-11	20-Oct-11	19-Sep-11	26-Sep-11	-16	20-Oct-11											
SDS109550	Issue For Construction Drawings - Revised Drainage at Gogarburn Lodge	0	20-Oct-11	27-Sep-11	27-Sep-11	27-Sep-11	-17	Issue For Construction Drawings - Revised Drainage at Gogarburn Lodge											
Gyle Tramstop								06-Oct-11, Gyle Tramstop											
SDS109680	Roads Design for Gyle Tramstop	8	21-Jul-11 A	01-Sep-11	21-Jul-11	02-Aug-11	-22	01-Sep-11											
VO88300	CEC Approval Period	19	01-Sep-11	29-Sep-11	02-Aug-11	31-Aug-11	-19	29-Sep-11											
VO88310	Issue Revised Design to CEC	0	01-Sep-11	02-Aug-11	02-Aug-11	02-Aug-11	-19	Issue Revised Design to CEC											
VO88320	SDS Incorporate CEC Comments	5	29-Sep-11	06-Oct-11	31-Aug-11	07-Sep-11	-19	06-Oct-11											
SDS109690	Issue For Construction Drawings - Gyle Tramstop	0	06-Oct-11	08-Sep-11	08-Sep-11	08-Sep-11	-20	Issue For Construction Drawings - Gyle Tramstop											
Edinburgh Gateway								03-Jan-12, Edinburgh Gateway											
Edinburgh Gateway Retaining Wall Design								03-Jan-12, Edinburgh Gateway Retaining Wall Design											
Design Process								03-Jan-12, Design Process											
SDS106700	Detailed Design	43	12-May-11 A	14-Jul-11 A	12-May-11	14-Jul-11	0	14-Jul-11 A											
SDS106740	General Arrangement Drawings	38	16-Jun-11 A	15-Aug-11 A	16-Jun-11	09-Aug-11	-4	15-Aug-11 A											
SDS106760	Prepare Specification	6	15-Jul-11 A	22-Jul-11 A	15-Jul-11	22-Jul-11	0	22-Jul-11 A											
SDS106770	Internal Design Check (IDC) by PB	5	25-Jul-11 A	29-Jul-11 A	25-Jul-11	29-Jul-11	0	29-Jul-11 A											
SDS106750	Reinforced Concrete Drawings	22	01-Sep-11*	30-Sep-11	26-Aug-11	27-Sep-11	-3	30-Sep-11											
SDS106780	Cat3 Check	23	21-Sep-11	21-Oct-11	16-Sep-11	18-Oct-11	-3	21-Sep-11											
SDS106790	Preparation of Design & Check Certificate (PB)	9	14-Oct-11	28-Oct-11	13-Oct-11	26-Oct-11	-2	28-Oct-11											
SDS106800	Prepare IFC Drawings	5	21-Dec-11	28-Dec-11	22-Dec-11	29-Dec-11	1	28-Dec-11											
SDS106810	Issue For Construction Drawings - Edinburgh Gateway RW	0	03-Jan-12	03-Jan-12	03-Jan-12	03-Jan-12	0	Issue For Construction Drawings - Edinburgh Gateway RW											
CEC Technical Approval								24-Nov-11, CEC Technical Approval											
SDS106720	Informal Issue of data to CEC	19	03-Oct-11	28-Oct-11	29-Sep-11	25-Oct-11	-2	28-Oct-11											
SDS106850	Submission of final data to CEC	0	01-Nov-11	28-Oct-11	28-Oct-11	28-Oct-11	-1	Submission of final data to CEC											
SDS106860	CEC Review Period	9	01-Nov-11	14-Nov-11	31-Oct-11	11-Nov-11	-1	14-Nov-11											
SDS106870	Formal Approval of CEC	0	24-Nov-11	14-Nov-11	14-Nov-11	14-Nov-11	-7	Formal Approval of CEC											
CEC AIP Approval								11-Jul-11 A, CEC AIP Approval											

█ Remaining Level of Effort   
 █ Actual Work   
 █ Critical Remaining ...  
█ Actual Level of Effort   
 █ Remaining Work   
 ◆ Milestone

CEC02085650\_0079

Activity ID	Activity Name	Original Duration	V75 Start	V75 Finish	V74 Start	V74 Finish	Variance - V74	July 2011	A	S	O	N	D	J	F								
SDS106830	CEC/Tie Review Period	19	13-Jun-11 A	08-Jul-11 A	13-Jun-11	08-Jul-11	1	0	1	1	2	3	0	1	2	2	0	1	1	2	0	1	1
SDS106840	Principal Approval Awarded	0		11-Jul-11 A		11-Jul-11	0	0	1	1	2	3	0	1	2	2	0	1	1	2	0	1	1
SW & NR Approvals																							
SDS106900	Negotiations with Scottish Water	94	15-Jul-11 A	24-Nov-11	15-Jul-11	23-Nov-11	0																
SDS106910	SW Review Period	19	15-Jul-11 A	11-Aug-11 A	15-Jul-11	10-Aug-11	-1																
SDS106920	SW Approval	0	09-Sep-11		08-Sep-11		0																
SDS106730	Negotiations with Network Rail	19	21-Oct-11	17-Nov-11	20-Oct-11	15-Nov-11	-2																
SDS106880	Network Rail Final Approval	5	17-Nov-11	23-Nov-11	17-Nov-11	23-Nov-11	0																
SDS106890	Network Rail Approval	0	24-Nov-11		23-Nov-11		0																
Building Warrant Approvals																							
A570440	Issue Drawings Varying Building Warrant	0	24-Nov-11		24-Nov-11		0																
A570460	Building Warrant Variations - Clarification Period	19	24-Nov-11	21-Dec-11	24-Nov-11	21-Dec-11	0																
A570450	Building Warrant for Approval Granted	0		21-Dec-11		21-Dec-11	0																
Edinburgh Gateway Tramstop																							
SDS109910	Tramstop Detailed Design Amendments	80	22-Jul-11 A	10-Nov-11	22-Jul-11	10-Nov-11	0																
SDS110000	Alterad A8 Drainage Design and Attenuation	38	22-Jul-11 A	15-Sep-11	22-Jul-11	14-Sep-11	-1																
SDS110010	Amended Track Alignment for Drainage	28	12-Aug-11 A	12-Aug-11	12-Aug-11	12-Aug-11	-1																
SDS110020	Amended Track Alignment for Ductwork	19	12-Aug-11 A	08-Sep-11	12-Aug-11	08-Sep-11	0																
SDS110030	Informal Issue of Data to CEC	19	15-Sep-11	12-Oct-11	16-Sep-11	12-Oct-11	0																
A570470	Issue Edinburgh Gateway Tramstop for Variation to Planning	0	23-Sep-11		23-Sep-11		0																
A570480	Planning Approval Period	28	23-Sep-11	03-Nov-11	23-Sep-11	03-Nov-11	0																
SDS110040	Submission of final data to CEC	0	12-Oct-11		13-Oct-11		1																
SDS110050	CEC Review Period	9	12-Oct-11	25-Oct-11	14-Oct-11	27-Oct-11	1																
SDS110060	Formal Approval of CEC	0	27-Oct-11		28-Oct-11		2																
A570490	Receive Planning Application Comments	0		03-Nov-11		03-Nov-11	0																
SDS109980	Prepare IFC Drawings	5	03-Nov-11	10-Nov-11	04-Nov-11	10-Nov-11	0																
Final Issue for Construction Issue																							
SDS104300	Issue For Construction Drawings and MX Model Edinburgh Gateway	0	03-Jan-12	03-Jan-12	03-Jan-12	03-Jan-12	0																
Gogarburn to Edinburgh Airport - Section 7																							
Section 7A																							
Sub Section Wide																							
Consents & Approvals																							
Technical Approvals																							
Building Warrant Edinburgh Airport DCR0146 & DCR0095																							
SDS94200	Building Warrant Formal Approval Period	28	25-May-11 A	06-Jul-11 A	25-May-11	06-Jul-11	1																
SDS94260	Revise Drainage Design for Building Warrent Approval	15	03-Aug-11 A	24-Aug-11 A																			
SDS94220	Receive Building Warrant for Edinburgh Airport Canopy Structure	0		01-Sep-11*		05-Aug-11	-17																
BAA Approvals																							
SDS109710	Issue to BAA for Approval	0		01-Sep-11		05-Aug-11	-17																
SDS109720	BAA Approval Period	19	01-Sep-11	29-Sep-11	05-Aug-11	05-Sep-11	-16																
SDS109730	Incorporate BAA Comments	2	29-Sep-11	03-Oct-11	05-Sep-11	07-Sep-11	-16																
DCR0226 - Special OLE Base at Stop/Canopy																							
SDS107150	Design OLE Base	14	01-Sep-11	21-Sep-11	15-Aug-11	06-Sep-11	-11																
SDS107850	CEC Approval Period	9	01-Sep-11*	13-Sep-11	15-Aug-11	26-Aug-11	-13																
SDS107160	Issue For Construction Drawings - DCR0226 Special OLE Base	5	14-Sep-11	20-Sep-11	29-Aug-11	02-Sep-11	-12																
Road Safety Audit (Eastfield Road)																							
SDS109750	Revision to RSA at Eastfield Road - Revised Alignment of Burnside Road to be Considered	41	08-Aug-11 A	04-Oct-11	08-Aug-11	05-Oct-11	1																
SDS109780	Receive Instruction from BSC to Proceed	0	08-Aug-11 A		08-Aug-11		0																
SDS109790	Issue to BAA for Approval	0		10-Aug-11 A		02-Sep-11	15																
SDS109800	BAA Approval Period	19	10-Aug-11 A	29-Sep-11	02-Sep-11	30-Sep-11	1																
SDS109810	Incorporate BAA Comments	2	30-Sep-11	03-Oct-11	30-Sep-11	04-Oct-11	1																

█ Remaining Level of Effort   
 █ Actual Work   
 █ Critical Remaining ...  
█ Actual Level of Effort   
 █ Remaining Work   
 ◆ Milestone

Activity ID	Activity Name	Original Duration	V75 Start	V75 Finish	V74 Start	V74 Finish	Variance - V74	July 2011	A	S	O	N	D	J	F															
SDS109760	Issue For Construction Drawings (Eastfield Rd)	0	04-Oct-11		05-Oct-11		-1	0	1	1	2	3	0	1	2	2	0	1	1	2	0	0	1	2	0	1	2	0	1	1
DCR0095 - Edinburgh Airport Kiosk		0	03-Oct-11	03-Oct-11	07-Sep-11	07-Sep-11	-17																							
SDS94310	Issue For Construction Drawings - DCR0095 Edinburgh Airport Kiosk	0		03-Oct-11		07-Sep-11	-16																							
DCR0146 - Design of Canopy Structure at Airport Kiosk		0	03-Oct-11	03-Oct-11	07-Sep-11	07-Sep-11	-17																							
SDS94250	Issue For Construction Drawings - DCR0146 Canopy Structure at Airport Kiosk	0		03-Oct-11		07-Sep-11	-16																							

- Issue For Construction Drawings (Eastfield Rd)
- 03-Oct-11, DCR0095 - Edinburgh Airport Kiosk
- Issue For Construction Drawings - DCR0095 Edinburgh Airport Kiosk
- 03-Oct-11, DCR0146 - Design of Canopy Structure at Airport Kiosk
- Issue For Construction Drawings - DCR0146 Canopy Structure at Airport Kiosk

■ Remaining Level of Effort   
 ■ Actual Work   
 ■ Critical Remaining ...  
■ Actual Level of Effort   
 ■ Remaining Work   
 ◆ Milestone

CEC02085650\_0081