

Infraco Works Commenced/Completed during the Period: 3.12 (ref. Update Programme)

Period Ending: 18/02/2011

Activity ID	Activity Name	Planned Start	Planned Finish	Actual Start	Ongoing	Actual Finish	Note
<b>Section 1C/D (Princes Street)</b>							
	<b>01D Princes Street (inc.) to Haymarket (exc.)</b>	05-Jan-09 A	02-Apr-13				
	Princes St – Scottish Water and outstanding/remedial works.						Complete at this stage



Infraco Works Commenced/Completed during the Period: 3.12 (ref. Update Programme)

Period Ending: 18/02/2011

Activity ID	Activity Name	Planned Start	Planned Finish	Actual Start	Ongoing	Actual Finish	Note
<b>Section 1D (Shandwick to Haymarket)</b>							
	<b>01D Princes Street (inc.) to Haymarket (exc.)</b>	05-Jan-09 A	02-Apr-13				
	MUDFA/Utilities Work (by others)				y		
	Works Not Started			Awaiting Permit to Commence			



Infraco Works Commenced/Completed during the Period: 3.12 (ref. Update Programme)

Period Ending: 18/02/2011

Activity ID	Activity Name	Planned Start	Planned Finish	Actual Start	Ongoing	Actual Finish	Note
<b>Section 2A</b>							
<b>02A Haymarket Corridor</b>		31-Mar-08 A	31-Aug-12				
<b>Russel Road Underbridge (S20)</b>		23-May-08 A	31-May-11				
	Network Rail Form C Submission & Approval - Piling Platform				y		

BFB00003289\_0250



Infraco Works Commenced/Completed during the Period: 3.12 (ref. Update Programme)  
 Period Ending: 18/02/2011

Activity ID	Activity Name	Planned Start	Planned Finish	Actual Start	Ongoing	Actual Finish	Note
<b>Section 5A1</b>							
<b>05A Roseburn Junction (exc.) to Balgreen Road (inc.)</b>		23-May-08 A	24-May-13				
<b>Russell Road Retaining Walls (W3 and W4)</b>		18-Jul-08 A	17-Apr-12				
	Network Rail Form C Submission & Approval - Slope Stability to Units 20-29				y		
	Network Rail Form C Submission & Approval - Bored Piling Platform to Units 1-10				y		
	Network Rail Form C Submission & Approval - Sheet Piling to Units 20-29				y		
	Network Rail Form C Submission & Approval - Bored Piling Platform to Units 20-29				y		
<b>Murrayfield Tram Stop Retaining Wall (W18)</b>		10-Nov-08 A	01-May-12				
	Network Rail Form C Submission & Approval - Temp Works				y		
<b>Roseburn Street Viaduct (S21A)</b>		01-Apr-09 A	21-Nov-11				
	Network Rail Form C Submission & Approval - S504 Piling Platform				y		
	Network Rail Form C Submission & Approval - S502 Piling Platform				y		
<b>Murrayfield Retaining Walls (S21D)</b>		01-Aug-08 A	21-Jul-11				
	Network Rail Form C Submission & Approval - Sheet Piling to West End				y		
	Network Rail Form C Submission & Approval - Sheet Piling Platform to West End				y		

BFB00003289\_0251



Infraco Works Commenced/Completed during the Period: 3.12 (ref. Update Programme)  
Period Ending: 18/02/2011

Activity ID	Activity Name	Planned Start	Planned Finish	Actual Start	Ongoing	Actual Finish	Note
<b>Section 5A2</b>							
<b>Water of Leith Bridge (S21E)</b>		25-Jul-08 A	08-Jun-11				
	Network Rail Form C Submission & Approval - Sheet/Bored Piling to Centre Pier				y		Continuing with approvals.
	Network Rail Form C Submission & Approval - Temp SP Wall to East Abutment				y		Continuing with approvals.
<b>Baird Drive Retaining Walls (W8)</b>		01-Aug-08 A	23-Jun-11				
	Network Rail Form C Submission & Approval - Sheet Piling to East End				y		
	Network Rail Form C Submission & Approval - Sheet Piling to West End				y		
	Network Rail Form C Submission & Approval - Sheet Piling Platform to East End				y		
	Network Rail Form C Submission & Approval - Sheet Platform Piling to West End				y		
<b>Balgreen Road Bridge (S22A)</b>		08-Jul-10	26-Oct-11				
	Network Rail Form C Submission & Approval - Bored Piling Platform to East Abutment				y		Continuing with approvals.
	Network Rail Form C Submission & Approval - Sheet Piling to West Abutment				y		
	Network Rail Form C Submission & Approval - Sheet Piling Platform to West Abutment				y		
	Network Rail Form C Submission & Approval - Bored Piling Platform to West Abutment				y		
<b>Network Rail Access Bridge (S22B)</b>		18-Nov-10	28-Jun-11				
	Network Rail Form C Submission & Approval - King Posts to East Abutment				y		Continuing with approvals.
	Network Rail Form C Submission & Approval - Sheet Piling to West Abutment				y		
	Network Rail Form C Submission & Approval - King Post Platform to East Abutment				y		
	Network Rail Form C Submission & Approval - Sheet Piling Platform to West Abutment				y		

BFB00003289\_0252



Infraco Works Commenced/Completed during the Period: 3.12 (ref. Update Programme)  
Period Ending: 18/02/2011

Activity ID	Activity Name	Planned Start	Planned Finish	Actual Start	Ongoing	Actual Finish	Note
<b>Section 5B</b>							
<b>Carricknowe Bridge (S23)</b>		10-Jul-08 A	23-Jun-10				
5B-10-S23-76S	Parapet Beams	05-Apr-10	12-Apr-10	19-Jul-10	n		Design/level issue
5B-10-S23-81	Parapet Rails	19-Apr-10	26-Apr-10	21-Jul-10	n		Design/level issue
5B-10-S23-71	Backfill and cast slab south	19-Apr-10	29-Apr-10	06-Sep-10	n		Design/level issue
<b>Ballasted Track 1160m</b>		26-Apr-10	03-Dec-10				
5B-10A-TRCK-30	Earthworks - Subbase	26-Apr-10	25-May-10	03-May-10	n		Affected by change
5B-10A-TRCK-31(3)	Additional Earthworks	25-May-10	09-Jun-10	03-May-10	n		Affected by change
5B-10A-TRCK-50	OLE Foundations - Drainage	09-Jun-10	12-Jul-10	12-Jul-10	n		Affected by change
5B-10A-TRCK-60	Additional Drainage	12-Jul-10	10-Aug-10	12-Jul-10	n		Affected by change
<b>Concrete Slab Track 590m</b>		02-Jun-10	27-Oct-10				
5B-10C-TRCK-30	Earthworks- Subbase	02-Jun-10	20-Jul-10	21-Jun-10	n		Affected by change
<b>Saughton Road North (exc.) to Bankhead (inc.)</b>		11-Jul-08 A	08-Oct-12				
<b>Bankhead Retaining Wall (W11)</b>		18-Jun-10	22-Nov-10				
5B-09-W11-25	Network Rail Form C Submission & Approval	18-Jun-10	11-Oct-10	29-Sep-10	y		
<b>South Gyle Access Bridge (S26)</b>		18-Jun-10	08-Jun-11				
	Network Rail Form C Submission & Approval - Sheet Piling to Embankment				y		
	Network Rail Form C Submission & Approval - Bored Piling Platform to Abutments				y		
<b>Edinburgh Park Station Tram Stop</b>		11-Jul-08 A	18-Oct-11				
5B-08-TRMS-90	Civil Engineering and Builderworks	09-May-11	09-Aug-11	19-Feb-10	n		Affected by change
<b>Bankhead (exc.) to Edinburgh Park Station (inc.)</b>		11-Jul-08 A	18-Oct-11				
<b>Trackwork (790m)</b>		25-Nov-08 A	14-Jun-11				
5B-08-TRCK-30	Earthworks and Subbase	17-May-10	08-Jun-10	19-Feb-10	n		Affected by change
5B-08-TRCK-50	OLE Foundations - Drainage	07-Jul-10	23-Aug-10	28-Jun-10	n		Affected by change
5B-08-TRCK-51	Additional drainage	23-Aug-10	01-Oct-10	28-Jun-10	n		Affected by change
<b>Trackwork (854m)</b>		25-Nov-08 A	09-Feb-11				
5B-07-TRCK-30	Earthworks- Subbase	04-May-10	18-May-10	09-Aug-10	n		Affected by change
5B-07-TRCK-31(3)	Additional Earthworks	19-May-10	09-Aug-10	09-Aug-10	n		Affected by change
<b>Edinburgh Park Station Bridge (S27)</b>		23-May-08 A	16-Jun-10				
<b>Superstructure</b>		23-Mar-09 A	16-Jun-10				
5B-07-S27-80	Bridge Finishes	24-Feb-10*	16-Jun-10		n		Affected by change

BFB00003289\_0253



Infraco Works Commenced/Completed during the Period: 3.12 (ref. Update Programme)  
Period Ending: 18/02/2011

Activity ID	Activity Name	Planned Start	Planned Finish	Actual Start	Ongoing	Actual Finish	Note
<b>Section 5C</b>							
<b>Edinburgh Park (exc.) to Gyle Centre (inc.)</b>		13-May-08 A	21-May-12				
<b>Trackwork (760m)</b>		14-Jan-09 A	06-Jun-11				
5C-06-TRCK-30	Earthworks and Subbase	02-Jun-10	29-Jun-10	06-Aug-10	n		Affected by change
<b>A8 Underpass (W28)</b>		28-Jul-08 A	13-Sep-11				
<b>Phase 4</b>		30-Apr-10	17-Nov-10				
5C-03-W28-92(3)10	Deck Construction	30-Apr-10	06-Aug-10		n		Affected by change
<b>Phases 1 &amp; 2</b>		29-Mar-10	02-Nov-10				
5C-03-W28-90(3)10	Deck Construction	07-May-10	29-Jul-10	25-May-10	n		Affected by change
5C-03-W28-90(3)20	North Portal	14-Jun-10	10-Aug-10	27-May-10	n		Affected by change
5C-03-W28-90(3)30	Finishes	29-Jul-10	02-Nov-10	03-Sep-10	n		Affected by change
<b>Depot Access Bridge (S32)</b>		07-Oct-08 A	11-May-11				
<b>Centre Columns</b>		29-Mar-10	05-Nov-10				
<b>North Abutment</b>		22-Mar-10	20-Aug-10				
5C-03-S32-20(3)	Drainage & Backfill	29-Jul-10	20-Aug-10	16-Aug-10	y		
<b>South Abutment</b>		06-Apr-10	18-Jan-11				
5C-03-S32-55(3)	Walls	04-Oct-10	07-Dec-10	09-Sep-10		02-Feb-11	
5C-03-S32-60(3)	Drainage & Backfill	30-Nov-10	18-Jan-11	25-Oct-10	y		
<b>Superstructure</b>		17-Nov-10	11-May-11				
5C-03-S32-65(3)	Deck	17-Nov-10	30-Mar-11	13-Dec-10			

BFB00003289\_0254



Infraco Works Commenced/Completed during the Period: 3.12 (ref. Update Programme)  
 Period Ending: 18/02/2011

Activity ID	Activity Name	Planned Start	Planned Finish	Actual Start	Ongoing	Actual Finish	Note
<b>Section 6A</b>							
<b>06A Gogar Depot</b>		29-May-08 A	05-Jul-13				
<b>Depot</b>		29-May-08 A	05-Jul-13				
<b>6A-01-TRCK-50(3)</b>	Drainage and Outfall (remaining quantity)	12-Apr-10	09-Jun-10		y		
<b>6A-01-TRCK-51(3)</b>	Additional Drainage	09-Jun-10	21-Jul-10		y		
<b>6A-01-BLDS-65</b>	Building Envelope	23-Nov-09	13-Apr-10		y		
<b>6A-01-BLDS-55</b>	Pits	04-Jan-10*	26-Feb-10		y		
<b>6A-01-BLDS-71</b>	Fitting out and Finishes	16-Mar-10	29-Oct-10		y		
<b>Access Roads</b>		04-May-10	23-Jun-11				
<b>6A-01-ROAD-95(3)</b>	Complete Access Road & Finishes	11-May-11	23-Jun-11				
<b>Depot Substation</b>		05-Apr-10	05-May-11				
<b>6A-01-SUBS-90</b>	Civil Engineering and Building Works	05-Apr-10	21-Oct-10	10-May-10	y		



Infraco Works Commenced/Completed during the Period: 3.12 (ref. Update Programme)  
 Period Ending: 18/02/2011

Activity ID	Activity Name	Planned Start	Planned Finish	Actual Start	Ongoing	Actual Finish	Note
<b>Section 7A</b>							
<b>07A Gogarburn (exc.) to Edinburgh Airport (inc.)</b>		15-May-08 A	23-Apr-12				
	<b>Gogarburn Underbridge (S29)</b>	15-May-08 A	28-Jan-10				
<b>Gogarburn (exc.) to Inglishton Park &amp; Ride (inc.)</b>		15-May-08 A	23-Apr-12				
<b>7A-04-TRCK-30</b>	Earthworks and Subbase	26-Apr-10	04-Jun-10		y		
<b>7A-04-TRCK-51(3)</b>	Additional Drainage	27-Jan-11	07-Feb-11		y		
	<b>Gogar Landfill Site</b>	17-May-10	10-Aug-11				
<b>Inglishton Park &amp; Ride (exc.) to Edinburgh Airport (inc.)</b>		10-Sep-08 A	26-Mar-12				
	<b>Phase B</b>	12-Mar-10	01-Feb-11				
	<b>7A-05-W14B-25(3)</b>	23-Aug-10	30-Aug-10	05-Jul-10			
	<b>Trackwork (833m)</b>	14-Jan-09 A	16-May-11				
	<b>7A-05--TRCK-01(3)</b>	12-Apr-10*			y		
	<b>7A-05-TRCK-51(3)</b>	13-Sep-10	22-Sep-10		y		



### **10.3 Look Ahead Programme**



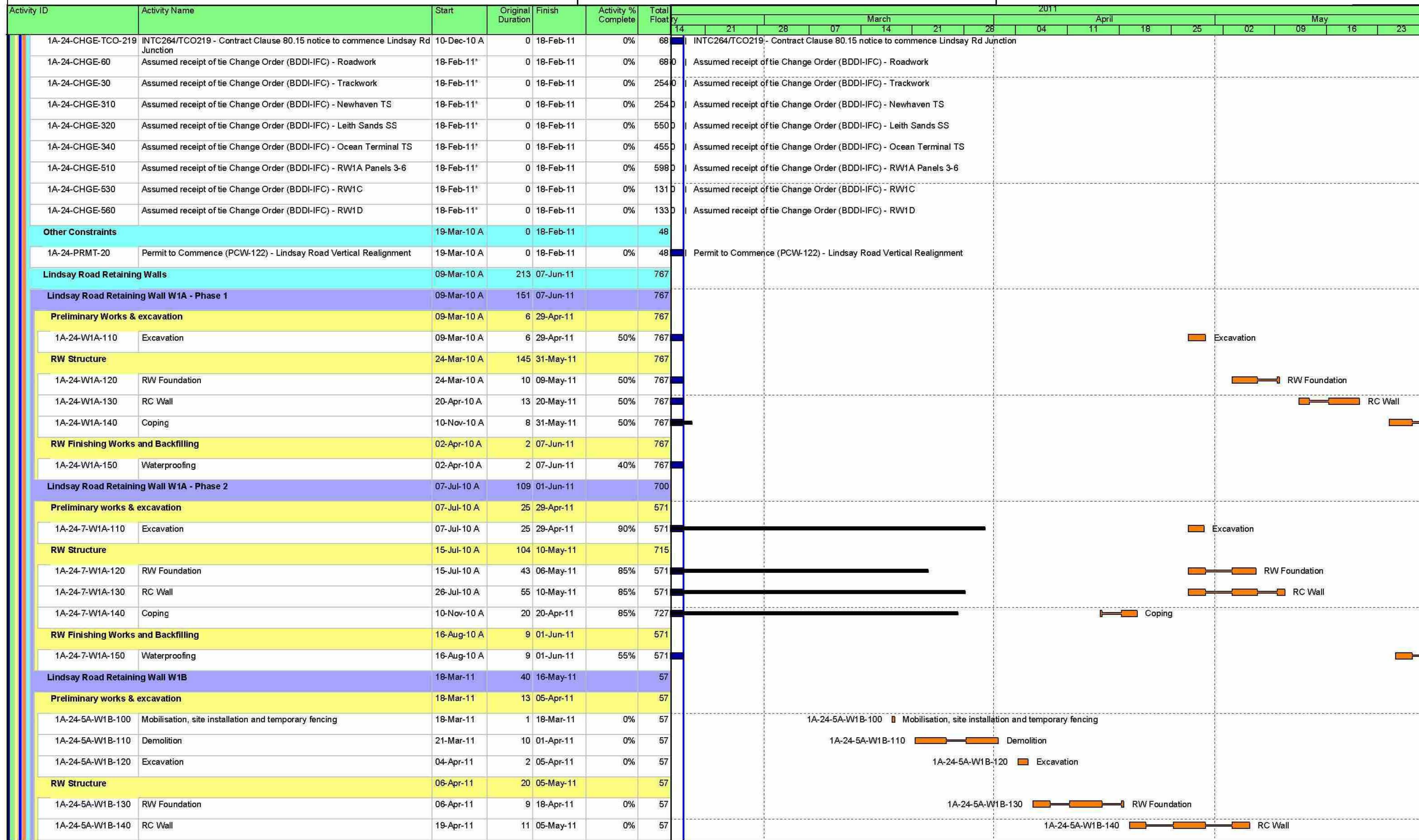




4 Week Look-Ahead Programme

19 February - 18 March 2011 (extended to 13 May 2011)

EDINBURGH TRAM NETWORK



Date	Revision	Checked	Approved
18-Feb-11	Construction Programme Updated V67 & Progress	JAC	

Page 2 of 24

- Actual Work
- % Complete
- Normal
- WBS Summary Activity
- Milestone

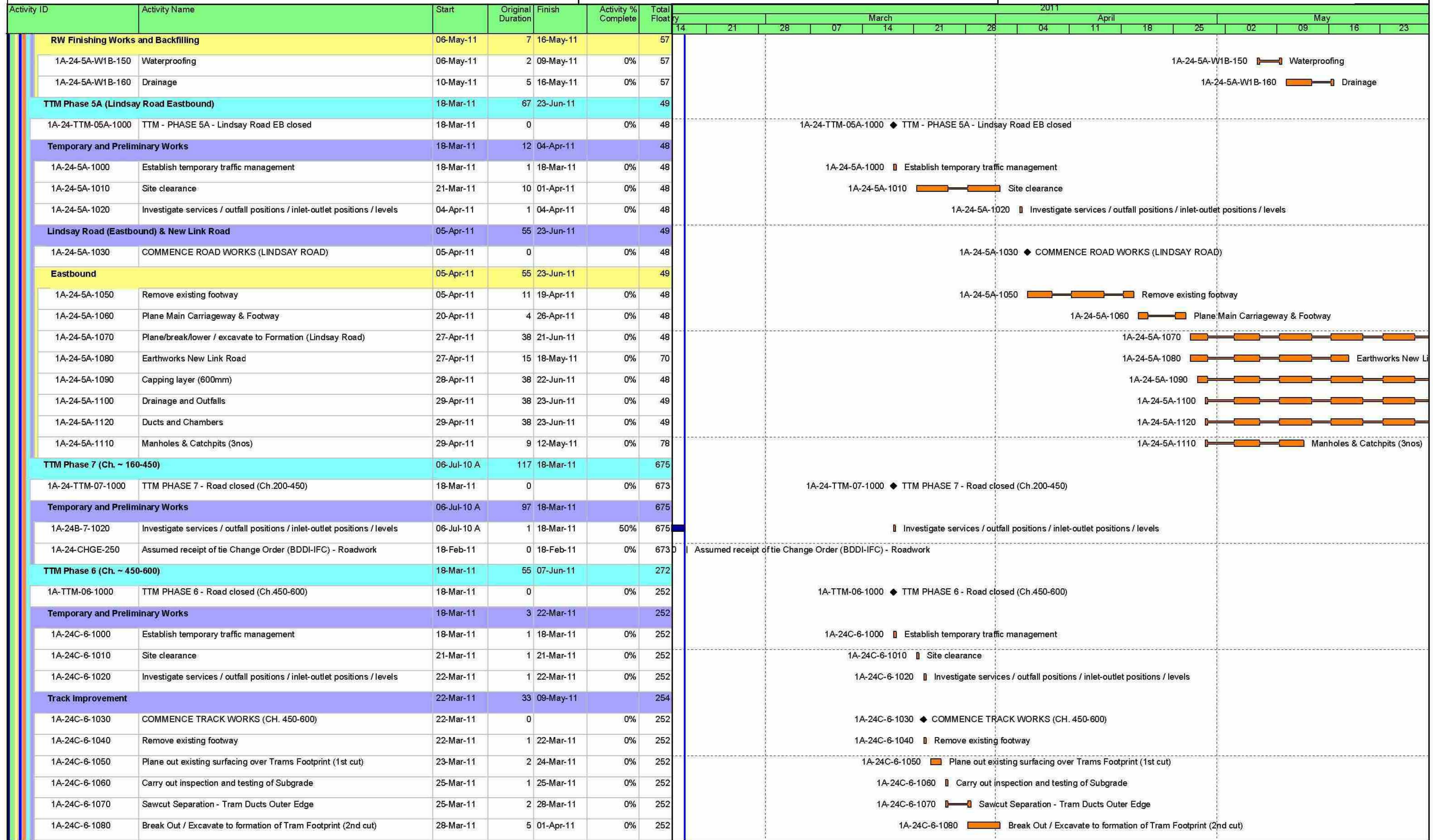
"This programme is provided for information and coordination purposes only, and without prejudice to the rights of the Infraco under the Agreement. This programme constitutes a target programme and as such, contains durations that are based on a risk profile not consistent with the Accepted Programme."

BFB00003289\_0259



**4 Week Look-Ahead Programme**  
**19 February - 18 March 2011 (extended to 13 May 2011)**

**EDINBURGH TRAM NETWORK**



Date	Revision	Checked	Approved
18-Feb-11	Construction Programme Updated V67 & Progress	JAC	

■ Actual Work    ■ % Complete  
■ Normal        ■ WBS Summary Activity  
◆ Milestone

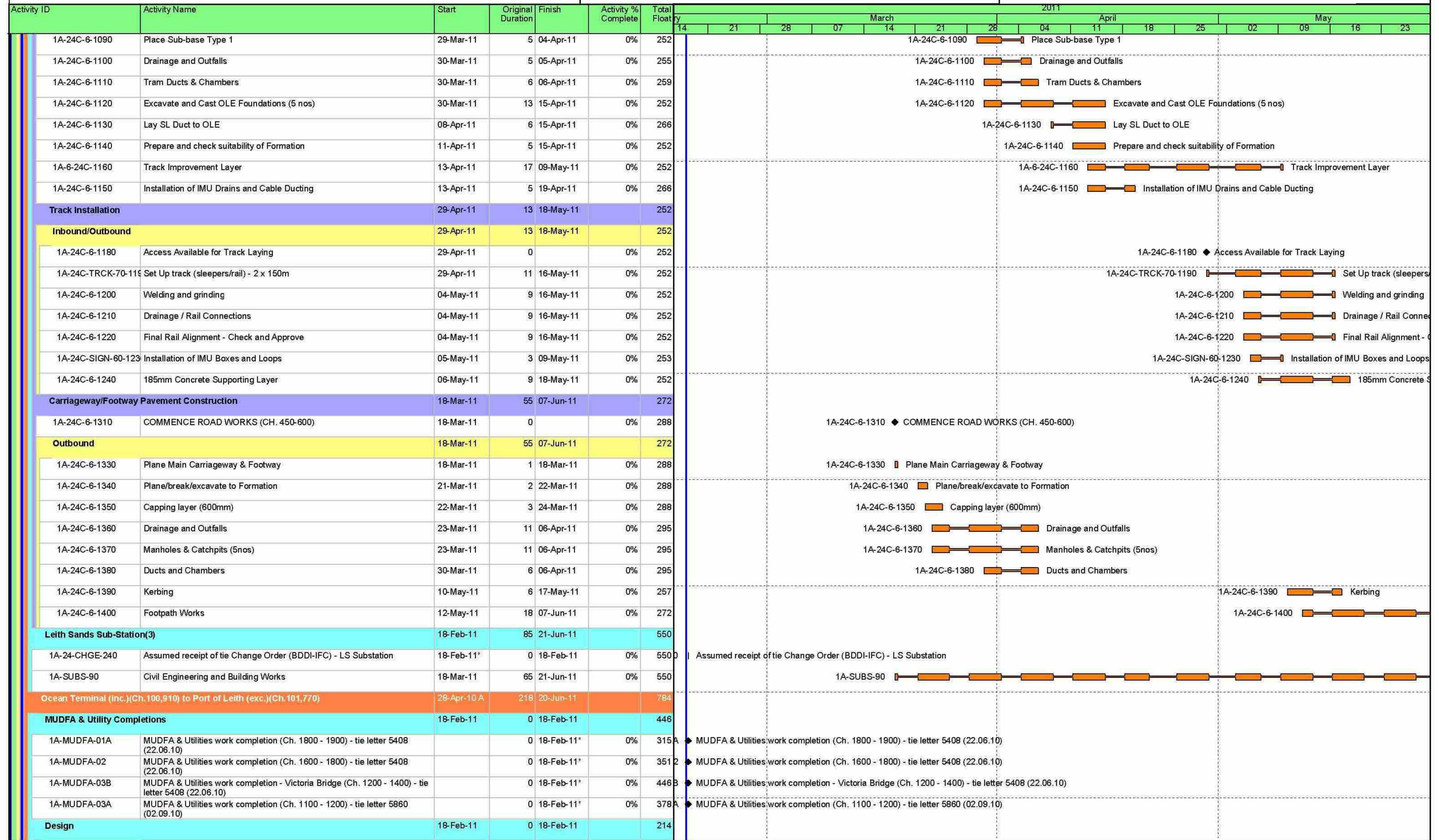
"This programme is provided for information and coordination purposes only, and without prejudice to the rights of the Infraco under the Agreement. This programme constitutes a target programme and as such, contains durations that are based on a risk profile not consistent with the Accepted Programme."

BFB00003289\_0260



**4 Week Look-Ahead Programme**  
**19 February - 18 March 2011 (extended to 13 May 2011)**

**EDINBURGH TRAM NETWORK**



Date	Revision	Checked	Approved
18-Feb-11	Construction Programme Updated V67 & Progress	JAC	

■ Actual Work    ■ % Complete  
■ Normal        ■ WBS Summary Activity  
◆ Milestone

"This programme is provided for information and coordination purposes only, and without prejudice to the rights of the Infraco under the Agreement. This programme constitutes a target programme and as such, contains durations that are based on a risk profile not consistent with the Accepted Programme."

BFB00003289\_0261



# 4 Week Look-Ahead Programme

19 February - 18 March 2011 (extended to 13 May 2011)

# EDINBURGH TRAM NETWORK



Activity ID	Activity Name	Start	Original Duration	Finish	Activity % Complete	Total Float	2011														
							Feb	Mar	Apr	May											
1A-3-DSG-ROAD-130	Tower Bridge Access Ramp (under review FPA/CEC)		0	18-Feb-11*	0%	218	14	21	28	07	14	21	28	04	11	18	25	02	09	16	23
<b>Change</b>							Tower Bridge Access Ramp (under review FPA/CEC)														
1A-24-CHGE-70	Assumed receipt of tie Change Order (BDDI-IFC) - Roadwork	18-Feb-11*	0	18-Feb-11	0%	249	Assumed receipt of tie Change Order (BDDI-IFC) - Roadwork														
1A-24-CHGE-40	Assumed receipt of tie Change Order (BDDI-IFC) - Trackwork	18-Feb-11*	0	18-Feb-11	0%	271	Assumed receipt of tie Change Order (BDDI-IFC) - Trackwork														
1A-24-CHGE-150	Assumed receipt of tie Change Order (BDDI-IFC) - S16 Victoria Dock Entrance Bridge	18-Feb-11*	0	18-Feb-11	0%	446	Assumed receipt of tie Change Order (BDDI-IFC) - S16 Victoria Dock Entrance Bridge														
1A-24-CHGE-330	Assumed receipt of tie Change Order (BDDI-IFC) - Casino Access Road	18-Feb-11*	0	18-Feb-11	0%	315	Assumed receipt of tie Change Order (BDDI-IFC) - Casino Access Road														
1A-24-CHGE-350	Assumed receipt of tie Change Order (BDDI-IFC) - Port of Leith TS	18-Feb-11*	0	18-Feb-11	0%	375	Assumed receipt of tie Change Order (BDDI-IFC) - Port of Leith TS														
<b>Other Constraints</b>							18-Feb-11 60 16-May-11 338														
1A-BYPASS-100	Ocean Terminal Bypass Road (by others)	18-Feb-11*	60	16-May-11	0%	338	Ocean Terminal Bypass Road (by others)														
<b>TTM Phase 1 (Ch. ~ 1,400-1,650)</b>							28-Apr-10 A 218 20-Jun-11 784														
<b>Tower Place Bridge (S17)</b>							28-Apr-10 A 218 20-Jun-11 784														
<b>tie Change Order</b>							18-Feb-11 0 18-Feb-11 234														
1A-1-S17-2061	tie Change Order for S17 open 19Nov10 - 10Jan11 excl		0	18-Feb-11*	0%	234	tie Change Order for S17 open 19Nov10 - 10Jan11 excl														
<b>Procurement</b>							18-Feb-11 0 18-Feb-11 234														
1A-1-S17-1020	Ramp Units (In-Situ)	18-Feb-11	0	18-Feb-11	0%	234	Ramp Units (In-Situ)														
<b>Works to West Abutment</b>							28-May-10 A 2 18-Feb-11 868														
1A-1-S17-D082	Delay - Awaiting instruction from tie	28-May-10 A	2	18-Feb-11	100%	868	Delay - Awaiting instruction from tie														
<b>South footway works</b>							18-Feb-11 1 18-Feb-11 255														
1A-1-S17-1660	Divert services back to South footpath (by others)	18-Feb-11	1	18-Feb-11	0%	255	Divert services back to South footpath (by others)														
<b>Pontoon</b>							28-Apr-10 A 152 20-Jun-11 784														
1A-1-S17-1820	Pontoon	28-Apr-10 A	152	20-Jun-11	44.74%	784	Pontoon														
<b>Demolition of North cope and deck</b>							18-Mar-11 17 11-Apr-11 229														
1A-1-S17-1670	Move pontoons to North side of Bridge	18-Mar-11	1	18-Mar-11	0%	229	1A-1-S17-1670 Move pontoons to North side of Bridge														
1A-1-S17-1680	Cut and remove existing parapet cope by diamond wire sawing	18-Mar-11	7	28-Mar-11	0%	229	1A-1-S17-1680 Cut and remove existing parapet cope by diamond wire sawing														
1A-1-S17-1690	Remove existing deck section by robolition	29-Mar-11	10	11-Apr-11	0%	229	1A-1-S17-1690 Remove existing deck section by robolition														
<b>Concrete works to North Deck section</b>							12-Apr-11 32 27-May-11 229														
1A-1-S17-1700	Install formwork to deck slab extension	12-Apr-11	25	18-May-11	0%	229	1A-1-S17-1700 Install formwork to deck slab extension														
1A-1-S17-1710	Install reinforcement to deck slab	26-Apr-11	20	24-May-11	0%	229	1A-1-S17-1710 Install reinforcement to deck slab														
1A-1-S17-1720	Pour concrete to deck slab	04-May-11	16	25-May-11	0%	229	1A-1-S17-1720 Pour concrete to deck slab														
1A-1-S17-1730	Install formwork for deck cope	06-May-11	15	26-May-11	0%	229	1A-1-S17-1730 Install formwork for deck cope														
1A-1-S17-1740	Pour concrete to deck cope	10-May-11	14	27-May-11	0%	229	1A-1-S17-1740 Pour concrete to deck cope														
<b>South access ramps</b>							18-Mar-11 40 16-May-11 306														
<b>West ramp</b>							18-Mar-11 25 21-Apr-11 321														
1A-1-S17-1850	Ramp Units	18-Mar-11	2	21-Mar-11	0%	214	1A-1-S17-1850 Ramp Units														
1A-1-S17-1860	Insitu ramp sections	22-Mar-11	12	06-Apr-11	0%	214	1A-1-S17-1860 Insitu ramp sections														
1A-1-S17-1870	Bitumen paint to concrete	07-Apr-11	2	08-Apr-11	0%	214	1A-1-S17-1870 Bitumen paint to concrete														
1A-1-S17-1880	Backfill paving area	11-Apr-11	3	13-Apr-11	0%	214	1A-1-S17-1880 Backfill paving area														
1A-1-S17-1890	Install paving to footway	14-Apr-11	4	19-Apr-11	0%	214	1A-1-S17-1890 Install paving to footway														

Date	Revision	Checked	Approved
18-Feb-11	Construction Programme Updated V67 & Progress	JAC	

█ Actual Work    █ % Complete  
█ Normal        █ WBS Summary Activity  
◆ Milestone

"This programme is provided for information and coordination purposes only; and without prejudice to the rights of the Infraco under the Agreement. This programme constitutes a target programme and as such, contains durations that are based on a risk profile not consistent with the Accepted Programme."

BFB00003289\_0262



**4 Week Look-Ahead Programme**  
**19 February - 18 March 2011 (extended to 13 May 2011)**

**EDINBURGH TRAM NETWORK**



Activity ID	Activity Name	Start	Original Duration	Finish	Activity % Complete	Total Float	2011															
							Feb	Mar	Apr	May												
1A-1-S17-1900	Install pedestrian/cycleway barrier	20-Apr-11	2	21-Apr-11	0%	214																
1A-1-S17-1910	WEST RAMP COMPLETE		0	21-Apr-11	0%	321																
<b>East ramp</b>		25-Apr-11	15	16-May-11		214																
1A-1-S17-1920	Excavate area for South East ramp	25-Apr-11	3	27-Apr-11	0%	214																
1A-1-S17-1930	Excavate area for retaining wall	28-Apr-11	2	29-Apr-11	0%	214																
1A-1-S17-1940	Construct retaining wall	03-May-11	10	16-May-11	0%	214																
<b>TTM Phase 1A (Casino Access Road)</b>		18-Mar-11	36	11-May-11		812																
1A-TTM-01A-1000	TTM PHASE 1A - Road closed (Ch.1850-1880)	18-Mar-11	0		0%	315																
1A-TTM-01A-1010	TTM PHASE 1A COMPLETE		0	10-May-11	0%	315																
<b>Roadworks</b>		18-Mar-11	31	03-May-11		315																
1A-1A-1000	COMMENCE ROAD WORKS (CH. 1850-1880)	18-Mar-11	0		0%	315																
1A-1A-1010	Site clearance	18-Mar-11	2	21-Mar-11	0%	315																
1A-1A-1020	Investigate services / outfall positions / inlet-outlet positions / levels	22-Mar-11	3	24-Mar-11	0%	315																
1A-1A-1030	Remove existing kerbing / footway	25-Mar-11	3	29-Mar-11	0%	315																
1A-1A-1040	Plane/break/excavate to Formation	30-Mar-11	3	01-Apr-11	0%	315																
1A-1A-1050	Drainage and Outfalls	04-Apr-11	6	11-Apr-11	0%	319																
1A-1A-1060	Manholes & Catchpits (3 nos)	04-Apr-11	9	14-Apr-11	0%	319																
1A-1A-1070	Ducts and Chambers	04-Apr-11	12	19-Apr-11	0%	315																
1A-1A-1080	Kerbing	11-Apr-11	8	20-Apr-11	0%	315																
1A-1A-1090	Footpath Works	21-Apr-11	3	26-Apr-11	0%	319																
1A-1A-1100	Surfacing	21-Apr-11	3	26-Apr-11	0%	315																
1A-1A-1110	Road Signs and Markings	27-Apr-11	1	27-Apr-11	0%	315																
1A-1A-1120	Landscaping	28-Apr-11	3	03-May-11	0%	315																
1A-1A-1130	ROAD WORKS COMPLETE (CH. 1850-1880)		0	03-May-11	0%	315																
<b>Commissioning and Testing</b>		04-May-11	5	11-May-11		812																
1A-1A-TEST-100	Handover / Acceptance of Roadworks	04-May-11	5	10-May-11	0%	315																
1A-1A-TEST-110	Start remaining E&M works along track	11-May-11	0		0%	812																
<b>Port of Leith (Inc.) (Ch.101,770 to Bernard Street (exc.)(Ch. 102, 150)</b>		18-Feb-11	0	18-Feb-11		848																
<b>MUDFA &amp; Utility Completions</b>		18-Feb-11	0	18-Feb-11		655																
1A-MUDFA-17	MUDFA & Utilities work completion (Ch. 1900 - 2000) - tie letter 6361 (06.10.10)		0	18-Feb-11*	0%	579																
1A-MUDFA-16	MUDFA & Utilities work completion (Ch. 2000 - 2100) - tie letter 6361 (06.10.10)		0	18-Feb-11*	0%	568																
1A-MUDFA-15	MUDFA & Utilities work completion (Ch. 2100 - 2300) - tie letter 6361 (06.10.10)		0	18-Feb-11*	0%	655																
1A-MUDFA-18	MUDFA & Utilities work completion (Ch. 1800 - 1900) - tie letter 6361 (06.10.10)		0	18-Feb-11*	0%	579																
<b>Design</b>		18-Feb-11	0	18-Feb-11		591																
1A-2-DSG-ROAD-110	Re-Issue Construction Drawings - Roadworks		0	18-Feb-11*	0%	591																
<b>Change</b>		18-Feb-11	0	18-Feb-11		848																
1A-24-CHGE-80	Assumed receipt of tie Change Order (BDDI-IFC) - Roadwork	18-Feb-11*	0	18-Feb-11	0%	568																
1A-24-CHGE-90	Assumed receipt of tie Change Order (BDDI-IFC) - Trackwork	18-Feb-11*	0	18-Feb-11	0%	571																

Date	Revision	Checked	Approved
18-Feb-11	Construction Programme Updated V67 & Progress	JAC	

Page 6 of 24

█ Actual Work    █ % Complete  
█ Normal        █ WBS Summary Activity  
◆ Milestone

"This programme is provided for information and coordination purposes only, and without prejudice to the rights of the Infraco under the Agreement. This programme constitutes a target programme and as such, contains durations that are based on a risk profile not consistent with the Accepted Programme."

BFB00003289\_0263



**4 Week Look-Ahead Programme**  
**19 February - 18 March 2011 (extended to 13 May 2011)**

**EDINBURGH TRAM NETWORK**



Activity ID	Activity Name	Start	Original Duration	Finish	Activity % Complete	Total Float	2011															
							March			April			May									
							14	21	28	07	14	21	28	04	11	18	25	02	09	16	23	
1A-24-CHGE-360	Assumed receipt of tie Change Order (BDDI-IFC) - Bernard St TS	18-Feb-11*	0	18-Feb-11	0%	848																
<b>Bernard Street (inc.) (Ch.102,150) to Foot of the Walk (exc.) (Ch.102,700)</b>		18-Feb-11	62	18-May-11		517																
<b>MUDFA &amp; Utility Completions</b>		18-Feb-11	0	18-Feb-11		566																
1A-MUDFA-14	MUDFA & Utilities work completion (Ch. 2100 - 2300) - tie letter 6361 (06.10.10)		0	18-Feb-11*	0%	339																
1A-MUDFA-10-1-2-3	MUDFA & Utilities work completion (Ch. 110.000 - 110.100) - tbc		0	18-Feb-11*	0%	566																
<b>Design</b>		18-Feb-11	18	16-Mar-11		274																
1A-1-DSG-ROAD-110	Re-Issue Construction Drawings Roadworks (Bernard Street to Foot of the Walk)		0	18-Feb-11*	0%	292																
1A-21-ROAD-30	Re-Issue Construction Drawings - Roadwork		0	18-Feb-11*	0%	-96																
1A-21-ROAD-40	IFC - Constitution Street Graveyard Wall		0	16-Mar-11*	0%	0																
<b>Change</b>		18-Feb-11	0	18-Feb-11		579																
1A-24-CHGE-100	Assumed receipt of tie Change Order (BDDI-IFC) - Roadwork	18-Feb-11*	0	18-Feb-11	0%	269																
1A-24-CHGE-110	Assumed receipt of tie Change Order (BDDI-IFC) - Trackwork	18-Feb-11*	0	18-Feb-11	0%	272																
1A-24-CHGE-380	Assumed receipt of tie Change Order (BDDI-IFC) - Foot of the Walk TS	18-Feb-11*	0	18-Feb-11	0%	579																
<b>TTM Phase 14 (Ch. ~ 2,145-2,296)</b>		18-Mar-11	42	18-May-11		347																
1A-TTM-14-1000	TTM PHASE (14) - Road closed (Ch. ~ 2145-2296)	18-Mar-11*	0		0%	339																
<b>Temporary and Preliminary Works</b>		18-Mar-11	3	23-Mar-11		339																
1A-14-1000	Establish temporary traffic management	18-Mar-11	1	18-Mar-11	0%	339																
1A-14-1010	Site clearance	21-Mar-11	1	21-Mar-11	0%	339																
1A-14-1020	Investigate services / outfall positions / inlet-outlet positions / levels	22-Mar-11	1	22-Mar-11	0%	339																
1A-14-1030	COMMENCE TRACK/ROAD WORKS (Ch. ~ 2145-2296)	23-Mar-11	0		0%	339																
<b>Outbound</b>		23-Mar-11	39	18-May-11		347																
<b>Track Improvement + Carriageway/Footway Subgrade</b>		23-Mar-11	34	11-May-11		352																
1A-14-1040	Remove existing footway	23-Mar-11	3	25-Mar-11	0%	339																
1A-14-1050	Plane out existing surfacing over Trams Footprint (1st cut)	28-Mar-11	2	29-Mar-11	0%	339																
1A-14-1060	Carry out inspection and testing of Subgrade	30-Mar-11	1	30-Mar-11	0%	339																
1A-14-1070	Sawcut Separation - Tram Ducts Outer Edge	30-Mar-11	1	30-Mar-11	0%	339																
1A-14-1080	Break Out / Excavate to formation of Tram Footprint (2nd cut)	31-Mar-11	9	12-Apr-11	0%	339																
1A-14-1100	Capping layer (600mm)	01-Apr-11	9	13-Apr-11	0%	370																
1A-14-1090	Place Sub-base Type 1 (Track)	01-Apr-11	9	13-Apr-11	0%	370																
1A-14-1120	Tram Ducts & Chambers	04-Apr-11	6	11-Apr-11	0%	345																
1A-14-1130	Excavate and Cast OLE Foundations (3 nos)	04-Apr-11	12	19-Apr-11	0%	339																
1A-14-1140	Lay SL Duct to OLE	12-Apr-11	6	19-Apr-11	0%	353																
1A-14-1110	Drainage and Outfalls	13-Apr-11	3	15-Apr-11	0%	341																
1A-14-1150	Prepare and check suitability of Formation	18-Apr-11	2	19-Apr-11	0%	339																
1A-14-1160	Track Improvement Layer	20-Apr-11	14	11-May-11	0%	339																
1A-14-1170	Installation of IMU Drains and Cable Ducting	20-Apr-11	5	27-Apr-11	0%	348																
<b>Track Installation</b>		12-May-11	5	18-May-11		339																
1A-14-1200	Access Available for Track Laying	12-May-11	0		0%	339																

Date	Revision	Checked	Approved
18-Feb-11	Construction Programme Updated V67 & Progress	JAC	

Page 7 of 24

█ Actual Work    █ % Complete  
█ Normal        █ WBS Summary Activity  
◆ Milestone

"This programme is provided for information and coordination purposes only, and without prejudice to the rights of the Infraco under the Agreement. This programme constitutes a target programme and as such, contains durations that are based on a risk profile not consistent with the Accepted Programme."

BFB00003289\_0264







4 Week Look-Ahead Programme

19 February - 18 March 2011 (extended to 13 May 2011)

EDINBURGH TRAM NETWORK



Activity ID	Activity Name	Start	Original Duration	Finish	Activity % Complete	Total Float	2011																
							Feb	Mar	Apr	May													
<b>Phase 1 Northbound (Leith) Carriageway (Ch 80-350)</b>							14	21	28	07	14	21	28	04	11	18	25	02	09	16	23		
1B-20D-ROAD-20(3)	Establish Traffic Management & Temp. Fencing	18-Mar-11	2	21-Mar-11	0%	103																	
1B-20D-ROAD-22(3)	Trial Holes for Services	22-Mar-11	3	24-Mar-11	0%	103																	
1B-20D-ROAD-31(3)	Excavate Existing Carriageway	25-Mar-11	8	05-Apr-11	0%	103																	
1B-20D-ROAD-30(3)	Excavate Existing Kerbs	29-Mar-11	3	31-Mar-11	0%	136																	
1B-20D-ROAD-32(3)	Capping	01-Apr-11	5	07-Apr-11	0%	103																	
1B-20D-TRCK-60	Lay and Concrete Ducts (& Chambers)	08-Apr-11	20	09-May-11	0%	103																	
1B-20D-ROAD-51(3)	Relocate Existing Manholes	08-Apr-11	20	09-May-11	0%	103																	
1B-20D-ROAD-61(3)	Subbase	10-May-11	8	19-May-11	0%	103																	
<b>Balfour Street (inc.)(Ch.110,640) to McDonald Road (exc.)(Ch.120,020)</b>																							
<b>MUDFA &amp; Utility Completions</b>																							
1B-19-A20050	Balfour Street to McDonald Road - tie letter 6361 (06.10.10)		0	18-Feb-11*	0%	16																	
<b>Design</b>																							
1B-19-TRCK-20	Issue Construction Drawings - S18 LWRB Trackform		0	18-Feb-11*	0%	-97																	
<b>Change</b>																							
1A-24-CHGE-130	Assumed receipt of tie Change Order (BDDI-IFC) - Roadwork		0	18-Feb-11	0%	16																	
1A-24-CHGE-160	Assumed receipt of tie Change Order (BDDI-IFC) - Trackwork		0	18-Feb-11	0%	196																	
1A-24-CHGE-390	Assumed receipt of tie Change Order (BDDI-IFC) - Balfour St TS		0	18-Feb-11	0%	445																	
<b>Other Constraints</b>																							
1A-24-PRMT-40	Permit to Commence (PCW-126) - 1B Ch.900-1,250 and 1C Ch.000-150		0	18-Feb-11	0%	299																	
<b>Road &amp; Track Works</b>																							
<b>Balfour Street Ch 630-920</b>																							
<b>Phase 1 Northbound (Leith) Carriageway (Ch 630-920)</b>																							
1B-19A-ROAD-20(3)	Establish Traffic Management & Temp. Fencing	18-Mar-11	2	21-Mar-11	0%	16																	
1B-19A-ROAD-22(3)	Trial Holes for Services	22-Mar-11	3	24-Mar-11	0%	16																	
1B-19A-ROAD-31(3)	Excavate Existing Carriageway	25-Mar-11	11	08-Apr-11	0%	16																	
1B-19A-ROAD-30(3)	Excavate Existing Kerbs	29-Mar-11	3	31-Mar-11	0%	55																	
1B-19A-ROAD-32(3)	Capping	01-Apr-11	7	11-Apr-11	0%	16																	
1B-19A-TRCK-60	Lay and Concrete Ducts (& Chambers)	12-Apr-11	24	17-May-11	0%	16																	
1B-19A-ROAD-51(3)	Relocate Existing Manholes	12-Apr-11	20	11-May-11	0%	20																	
<b>Leith Walk Railway Bridge (S18)</b>																							
1B-19-S18-100	Existing Structure		0	03-Mar-11	0%	858																	
<b>01C McDonald Road (inc.) to Princess Street West (exc.) (Ch.120,000 - 121,980/130,000)</b>																							
<b>McDonald Road (inc.)(Ch.120,020) to Picardy Place (exc.)(Ch.120,600)</b>																							
<b>MUDFA &amp; Utility Completions</b>																							
1C-17-A16820	Picardy Place to St Andrews Square - tie letter 6361 (06.10.10)		0	18-Feb-11*	0%	95																	
1A-16-A16830	St Andrews Square - tie letter 6361 (06.10.10)		0	18-Feb-11*	0%	190																	
1C-18-A20060	McDonald Road to Picardy Place - tie letter 6361 (06.10.10)		0	18-Feb-11*	0%	284																	

Date	Revision	Checked	Approved
18-Feb-11	Construction Programme Updated V67 & Progress	JAC	

■ Actual Work    ■ % Complete  
■ Normal        ■ WBS Summary Activity  
◆ Milestone

"This programme is provided for information and coordination purposes only, and without prejudice to the rights of the Infraco under the Agreement. This programme constitutes a target programme and as such, contains durations that are based on a risk profile not consistent with the Accepted Programme."

BFB00003289\_0266



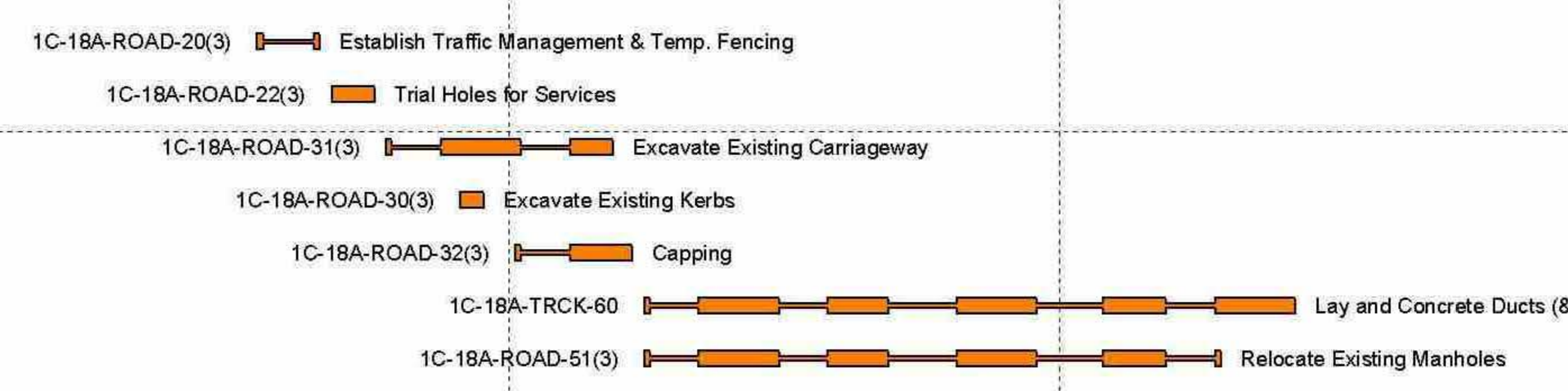
4 Week Look-Ahead Programme

19 February - 18 March 2011 (extended to 13 May 2011)

EDINBURGH TRAM NETWORK



Activity ID	Activity Name	Start	Original Duration	Finish	Activity % Complete	Total Float	2011											
							14	21	28	07	14	21	28	04	11	18	25	02
<b>Design</b>																		
B01280	Works in Leith Walk suspended until access issues resolved	10-Mar-09 A	470	18-Feb-11	0%	868												
1C-18-ROAD-20	Issue Construction Drawings - Leith Walk Cable Tunnel Interface			18-Feb-11*	0%	-97												
1C-18-ROAD-30	Issue Construction Drawings - London Road Shelter			18-Feb-11*	0%	-118												
<b>Change</b>																		
1A-24-CHGE-140	Assumed receipt of tie Change Order (BDDI-IFC) - Roadwork	18-Feb-11*		18-Feb-11	0%	284												
1A-24-CHGE-170	Assumed receipt of tie Change Order (BDDI-IFC) - Trackwork	18-Feb-11*		18-Feb-11	0%	413												
1A-24-CHGE-400	Assumed receipt of tie Change Order (BDDI-IFC) - McDonald Rd TS	18-Feb-11*		18-Feb-11	0%	443												
<b>Road &amp; Track Works</b>																		
<b>Leith Walk Ch 0-200</b>																		
<b>Phase 1 Northbound (Leith) Carriageway Ch 0-200</b>																		
1C-18A-ROAD-20(3)	Establish Traffic Management & Temp. Fencing	18-Mar-11	39	21-Mar-11	0%	284												
1C-18A-ROAD-22(3)	Trial Holes for Services	22-Mar-11	3	24-Mar-11	0%	284												
1C-18A-ROAD-31(3)	Excavate Existing Carriageway	25-Mar-11	9	06-Apr-11	0%	284												
1C-18A-ROAD-30(3)	Excavate Existing Kerbs	29-Mar-11	2	30-Mar-11	0%	322												
1C-18A-ROAD-32(3)	Capping	01-Apr-11	5	07-Apr-11	0%	284												
1C-18A-TRCK-60	Lay and Concrete Ducts (& Chambers)	08-Apr-11	24	13-May-11	0%	284												
1C-18A-ROAD-51(3)	Relocate Existing Manholes	08-Apr-11	20	09-May-11	0%	288												
<b>London Road Ch 375-500</b>																		
<b>Phase 1</b>																		
1C-18CD-ROAD-110	Dummy	18-Mar-11	170	30-Jan-12	0%	449												
<b>Picardy Place (inc.)(Ch.120,600) to St. Andrews Square (exc.)(Ch.121,150)</b>																		
<b>Design</b>																		
1C-3-DSG-ROAD-100	IFC Drawings Roads, St. Lighting, Drainage, OLE, Track, 1C2	18-Feb-11	41	18-Apr-11	0%	650												
1C-3-DSG-ROAD-120	IFC Drawings Picardy Place Change Design 1 Widened Footway	18-Feb-11		18-Feb-11*	0%	95												
1C-18-ROAD-40	Issue Construction Drawings - Playhouse Interface			18-Feb-11*	0%	-266												
1C-18-ROAD-50	Issue Construction Drawings - Picardy Place Roundabout Re-Design			18-Feb-11*	0%	-162												
1C-18-ROAD-60	Issue Construction Drawings - Picardy Place Widened Footway Re-Design			18-Feb-11*	0%	-167												
1C-3-DSG-ROAD-110	IFC Drawings Picardy Place Change Design 1 New Roundabout	18-Feb-11		18-Apr-11*	0%	54												
1C-3-DSG-ROAD-140	IFC Drawings Cathedral Lane Substation re-design incl equipment	18-Feb-11		18-Apr-11*	0%	650												
1C-3-DSG-ROAD-150	IFC Drawings Elder Street Change	18-Feb-11		18-Apr-11*	0%	262												
<b>Change</b>																		
1A-24-CHGE-180	Assumed receipt of tie Change Order (BDDI-IFC) - Roadwork	18-Feb-11*		18-Feb-11	0%	95												
1A-24-CHGE-190	Assumed receipt of tie Change Order (BDDI-IFC) - Trackwork	18-Feb-11*		18-Feb-11	0%	540												
1A-24-CHGE-410	Assumed receipt of tie Change Order (BDDI-IFC) - Picardy PI TS	18-Feb-11*		18-Feb-11	0%	545												
1A-24-CHGE-420	Assumed receipt of tie Change Order (BDDI-IFC) - Cathedral SS	18-Feb-11*		18-Feb-11	0%	671												
<b>St. Andrews Square (inc.)(Ch.121,150) to Princes Street West (exc.)(Ch.121,750)</b>																		
<b>Change</b>																		



Date	Revision	Checked	Approved
18-Feb-11	Construction Programme Updated V67 & Progress	JAC	

■ Actual Work    ■ % Complete  
■ Normal        ■ WBS Summary Activity  
◆ Milestone

"This programme is provided for information and coordination purposes only, and without prejudice to the rights of the Infraco under the Agreement. This programme constitutes a target programme and as such, contains durations that are based on a risk profile not consistent with the Accepted Programme."

BFB00003289\_0267



**4 Week Look-Ahead Programme**  
**19 February - 18 March 2011 (extended to 13 May 2011)**

**EDINBURGH TRAM NETWORK**



Activity ID	Activity Name	Start	Original Duration	Finish	Activity % Complete	Total Float	2011														
							March			April			May								
							14	21	28	07	14	21	28	04	11	18	25	02	09	16	23
1A-24-CHGE-200	Assumed receipt of tie Change Order (BDDI-IFC) - Roadwork	18-Feb-11*	0	18-Feb-11	0%	141	Assumed receipt of tie Change Order (BDDI-IFC) - Roadwork														
1A-24-CHGE-210	Assumed receipt of tie Change Order (BDDI-IFC) - Trackwork	18-Feb-11*	0	18-Feb-11	0%	150	Assumed receipt of tie Change Order (BDDI-IFC) - Trackwork														
1A-24-CHGE-430	Assumed receipt of tie Change Order (BDDI-IFC) - St Andrew Sq TS	18-Feb-11*	0	18-Feb-11	0%	268	Assumed receipt of tie Change Order (BDDI-IFC) - St Andrew Sq TS														
<b>Road &amp; Track Works</b>																					
<b>North St Andrews Square</b>																					
1C-16-TRCK-170	Dummy	18-Mar-11	100	13-Sep-11	0%	163	1C-16-TRCK-170														
<b>Waverley Junction / South St Andrews St. Ch 370 to 150</b>																					
<b>tie Change Order</b>																					
1C-16-SAS-160	Assumed receipt of tie Change Order BDDI to IFC	18-Feb-11*	0	18-Feb-11	0%	141	Assumed receipt of tie Change Order BDDI to IFC														
<b>Traffic Management</b>																					
1C-16-SAS-135	Phase 1 - South-North St Andrew St Closed	18-Mar-11	0	18-Mar-11	0%	141	1C-16-SAS-135 ◆ Phase 1 - South-North St Andrew St Closed														
1C-16-SAS-156	Phase 2 - Bus Traffic to Nearside Westbound Lane	18-Mar-11	0	18-Mar-11	0%	143	1C-16-SAS-156 ◆ Phase 2 - Bus Traffic to Nearside Westbound Lane														
<b>Phases 1 &amp; 2</b>																					
1C-16A-SAS1-252	Erect Pedestrian Barrier	18-Mar-11*	1	18-Mar-11	0%	117	1C-16A-SAS1-252 Erect Pedestrian Barrier														
1C-16A-SAS1-143	Site Clearance & Site Compound	18-Mar-11	12	04-Apr-11	0%	699	1C-16A-SAS1-143 Site Clearance & Site Compound														
1C-16A-SAS1-244	Investigate services / outfall positions / inlet-outlet positions / levels	21-Mar-11	4	24-Mar-11	0%	159	1C-16A-SAS1-244 Investigate services / outfall positions / inlet-outlet positions / levels														
<b>Phase 1 - Inbound SSAS + PS</b>																					
1C-16A-SAS1-166	Plane Main Carriageway 250mm	21-Mar-11	3	23-Mar-11	0%	117	1C-16A-SAS1-166 Plane Main Carriageway 250mm														
1C-16A-SAS1-165	Excavate to Formation for Carriageway and Track (incl for Capping/Type 1)	24-Mar-11	5	30-Mar-11	0%	117	1C-16A-SAS1-165 Excavate to Formation for Carriageway and Track (incl for Capping/Type 1)														
1C-16A-SAS1-176	Remove existing kerbs to store.	24-Mar-11	5	30-Mar-11	0%	702	1C-16A-SAS1-176 Remove existing kerbs to store.														
1C-16A-SAS1-247	Check suitability of formation (ongoing)	24-Mar-11	0	18-Mar-11	0%	121	1C-16A-SAS1-247 Check suitability of formation (ongoing)														
1C-16A-SAS1-248	Capping Layer to Adjacent Carriageway (600mm)	24-Mar-11	5	30-Mar-11	0%	121	1C-16A-SAS1-248 Capping Layer to Adjacent Carriageway (600mm)														
1C-16A-SAS1-154	Core/Cast OLE Pole Foundations	31-Mar-11	3	04-Apr-11	0%	161	1C-16A-SAS1-154 Core/Cast OLE Pole Foundations														
1C-16A-SAS1-239	Make good Formation with Type 1 (Ave 220mm)	31-Mar-11	2	01-Apr-11	0%	117	1C-16A-SAS1-239 Make good Formation with Type 1 (Ave 220mm)														
1C-16A-SAS1-370	Installation of IMU Drains and Cable Ducting	04-Apr-11	2	05-Apr-11	0%	117	1C-16A-SAS1-370 Installation of IMU Drains and Cable Ducting														
1C-16A-SAS1-171	Carry out inspection and testing of Subgrade	06-Apr-11	1	06-Apr-11	0%	117	1C-16A-SAS1-171 Carry out inspection and testing of Subgrade														
1C-16A-SAS1-172	Blinding Concrete	07-Apr-11	2	08-Apr-11	0%	117	1C-16A-SAS1-172 Blinding Concrete														
1C-16A-SAS1-163	Place RC Improvement Slab (+ cure lag)	11-Apr-11	6	18-Apr-11	0%	117	1C-16A-SAS1-163 Place RC Improvement Slab (+ cure lag)														
1C-16A-SAS1-174	Access for Track Laying	21-Apr-11	0	18-Apr-11	0%	117	1C-16A-SAS1-174 Access for Track Laying														
1C-16A-SAS1-175	Installation of Noise & Vibration Mat (if reqd)	21-Apr-11	0	18-Apr-11	0%	117	1C-16A-SAS1-175 Installation of Noise & Vibration Mat (if reqd)														
1C-16A-TRCK-70	Set track (1x198m)(sleepers/rail)	21-Apr-11	8	04-May-11	0%	117	1C-16A-TRCK-70 Set track (1x198m)(sleepers/rail)														
1C-16A-SAS1-257	Welding & Grinding	25-Apr-11	6	03-May-11	0%	117	1C-16A-SAS1-257 Welding & Grinding														
1C-16A-SAS1-258	Drainage / Rail Connections	25-Apr-11	6	03-May-11	0%	120	1C-16A-SAS1-258 Drainage / Rail Connections														
1C-16A-SAS1-249	Installation of IMU Boxes and Loops	25-Apr-11	6	03-May-11	0%	120	1C-16A-SAS1-249 Installation of IMU Boxes and Loops														
1C-16A-SAS1-380	Final Rail Alignment - Check and Approve	26-Apr-11	6	04-May-11	0%	117	1C-16A-SAS1-380 Final Rail Alignment - Check and Approve														
1C-16A-SAS1-241	230mm Concrete Supporting Layer (+ cure lag)	28-Apr-11	6	06-May-11	0%	117	1C-16A-SAS1-241 230mm Concrete Supporting Layer (+ cure lag)														
<b>Drainage &amp; Ducts</b>																					
1C-16A-SAS1-238	Outfall Connections	23-Mar-11	3	25-Mar-11	0%	165	1C-16A-SAS1-238 Outfall Connections														

Date	Revision	Checked	Approved
18-Feb-11	Construction Programme Updated V67 & Progress	JAC	

█ Actual Work    █ % Complete  
█ Normal        █ WBS Summary Activity  
◆ Milestone

"This programme is provided for information and coordination purposes only, and without prejudice to the rights of the Infraco under the Agreement. This programme constitutes a target programme and as such, contains durations that are based on a risk profile not consistent with the Accepted Programme."

BFB00003289\_0268















**4 Week Look-Ahead Programme**  
**19 February - 18 March 2011 (extended to 13 May 2011)**

**EDINBURGH TRAM NETWORK**



Activity ID	Activity Name	Start	Original Duration	Finish	Activity % Complete	Total Float	2011																	
							Feb 14	Feb 21	Feb 28	Mar 07	Mar 14	Mar 21	Mar 28	Apr 04	Apr 11	Apr 18	Apr 25	May 02	May 09	May 16	May 23			
<b>Change</b>																								
A20920	Assumed receipt of tie Change Order (BDDI-IFC) - S20	18-Feb-11	0	18-Feb-11*	0%	-311																		
A20930	Assumed receipt of tie Change Order (BDDI-IFC) - W3 & 4	18-Feb-11	0	18-Feb-11*	0%	-311																		
1A-24-CHGE-480	Assumed receipt of tie Change Order (BDDI-IFC) - Russell Rd SS	18-Feb-11*	0	18-Feb-11	0%	868																		
1A-24-CHGE-490	Assumed receipt of tie Change Order (BDDI-IFC) - Murrayfield TS RW	18-Feb-11*	0	18-Feb-11	0%	351																		
1A-24-CHGE-500	Assumed receipt of tie Change Order (BDDI-IFC) - Murrayfield TS	18-Feb-11*	0	18-Feb-11	0%	544																		
2A-24-CHGE-250	Assumed receipt of tie Change Order (BDDI-IFC) - Trackwork	18-Feb-11*	0	18-Feb-11	0%	574																		
<b>Design</b>																								
5A-12-TRCK-20	Issue Construction Drawings - S20 Trackform		0	18-Feb-11*	0%	-14																		
166	Re-Issue for Construction Drawings - Roadworks		0	18-Feb-11*	0%	-23																		
5A-12-W18-10	Issue Construction Drawings W18		0	30-Mar-11 A	100%																			
<b>Russel Road Underbridge (S20)</b>																								
5A-12-S20-25(3)20	S20 Russell Rd Br - NR Form C Submission & Approval - Piling Platform	19-Aug-10 A	55	17-Mar-11	70%	288																		
5A-12-S20-40	Excavation and piling	18-Mar-11	60	14-Jun-11	0%	288																		
<b>Russell Road Retaining Walls (W3 and W4)</b>																								
5A-12-W3-53(3)	Retaining Wall W4B & 4C	25-Jan-10 A	317	29-Feb-12	26%	76																		
5A-12-W4-35	W4 Russell Rd RW - NR Form C Submission & Approval - Slope Stability to Units 20-29	14-Jul-10 A	55	13-Apr-11	30%	60																		
5A-12-W4-45	W4 Russell Rd RW - NR Form C Submission & Approval - Sheet Piling to Units 20-29	08-Sep-10 A	55	13-Apr-11	30%	60																		
5A-12-W4-55	W4 Russell Rd RW - NR Form C Submission & Approval - Bored Piling Platform to Units 20-29	08-Sep-10 A	55	13-Apr-11	55%	60																		
5A-12-W3-55(3)	Retaining Wall W4A	18-Mar-11	149	18-Oct-11	0%	162																		
5A-12-W3-52(3)	Retaining Wall W4D	13-Apr-11	233	23-Mar-12	0%	60																		
<b>Murrayfield Tram Stop Retaining Wall (W18)</b>																								
5A-12-W18-25(3)10	W18 - NR Form C Submission & Approval - Temp Works	17-Sep-10 A	55	01-Apr-11*	45%	341																		
5A-12-W18-01	Assumed receipt of tie Change Order (BDDI-IFC)	18-Feb-11*	0		0%	341																		
5A-12-W18-31(3)	Site Clearance (Dummy)	01-Apr-11	20	03-May-11	0%	341																		
5A-12-W18-50(3)	Foundations (Dummy)	03-May-11	15	24-May-11	0%	341																		
<b>Murrayfield Stadium (exc.)(Ch.510,470) to Balgreen Road (Inc.)(Ch.520,040)</b>																								
<b>Design</b>																								
5A-11-S21B-30	Issue Construction Drawings - Re-design of Temporary Works (TQ 1809)	23-Aug-10 A	30	07-Mar-11*	60%	-116																		
5A-11-S21B-40	Issue Construction Drawings - Re-design of Sewer Lining (unforseen MH)	30-Aug-10 A	30	18-Feb-11*	100%	-104																		
5A-11-S21B-20(3)	Issue Construction Drawings Murrayfield Accomodation Works		0	18-Feb-11*	0%	-170																		
5A-11-TRCK-10	Issue Construction Drawings - Track Model 5A		0	18-Feb-11*	0%	-343																		
5A-11-21B-40	Issue Construction Drawings - Murrayfield Stad Accom Works - Other		0	18-Feb-11*	0%	-201																		
5A-11-S21B-10(3)	Issue Construction Drawings 21B		0	13-Apr-11*	0%	-70																		
5A-11-S21A-10(3)	Issue Construction Drawings S21A RC Portal Bridge		0	09-May-11*	0%	151																		
5A-11-S21A-20(3)	Issue Construction Drawings S21A Steel Composite Bridge		0	09-May-11*	0%	83																		
5A-11-S21A-30(3)	Issue Construction Drawings S21A RE Structure S501		0	09-May-11*	0%	230																		
5A-11-S21A-40(3)	Issue Construction Drawings - S21A RE Structure S503		0	09-May-11*	0%	359																		

Date	Revision	Checked	Approved
18-Feb-11	Construction Programme Updated V67 & Progress	JAC	

█ Actual Work    █ % Complete  
█ Normal        █ WBS Summary Activity  
◆ Milestone

"This programme is provided for information and coordination purposes only, and without prejudice to the rights of the Infraco under the Agreement. This programme constitutes a target programme and as such, contains durations that are based on a risk profile not consistent with the Accepted Programme."

BFB00003289\_0272





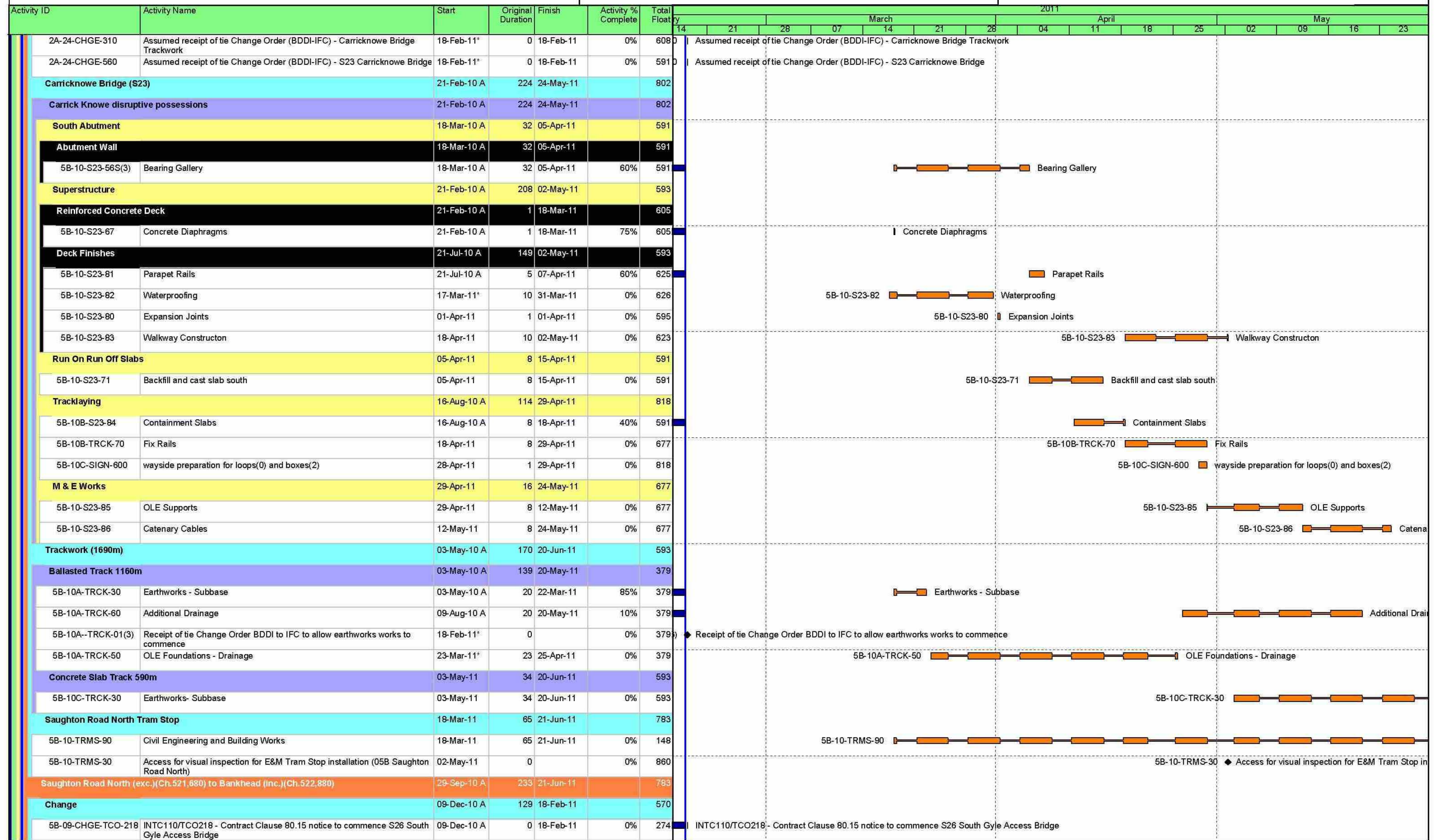






**4 Week Look-Ahead Programme**  
**19 February - 18 March 2011 (extended to 13 May 2011)**

**EDINBURGH TRAM NETWORK**



Date	Revision	Checked	Approved
18-Feb-11	Construction Programme Updated V67 & Progress	JAC	

█ Actual Work    █ % Complete  
█ Normal        █ WBS Summary Activity  
◆ Milestone

"This programme is provided for information and coordination purposes only; and without prejudice to the rights of the Infraco under the Agreement. This programme constitutes a target programme and as such, contains durations that are based on a risk profile not consistent with the Accepted Programme."

BFB00003289\_0275



# 4 Week Look-Ahead Programme

19 February - 18 March 2011 (extended to 13 May 2011)

# EDINBURGH TRAM NETWORK



Activity ID	Activity Name	Start	Original Duration	Finish	Activity % Complete	Total Float	2011											
							14	21	28	07	14	21	28	04	11	18	25	02
5B-09-CHGE-TCO-118	INTC107/TCO118 - Contract Clause 80.15 notice to commence W11 Bankhead Drive Retaining Wall	13-Dec-10 A	0	18-Feb-11	0%	367	INTC107/TCO118 - Contract Clause 80.15 notice to commence W11 Bankhead Drive Retaining Wall											
5B-10A-TRCK-01(3)20	Assumed receipt of tie Change Order (BDDI-IFC) - Bankhead SS	18-Feb-11*	0		0%	570	Assumed receipt of tie Change Order (BDDI-IFC) - Bankhead SS											
5B-10A-TRCK-01(3)30	Assumed receipt of tie Change Order (BDDI-IFC) - Bankhead RW	18-Feb-11*	0		0%	367	Assumed receipt of tie Change Order (BDDI-IFC) - Bankhead RW											
5B-10A-TRCK-01(3)40	Assumed receipt of tie Change Order (BDDI-IFC) - South Gyle Acc Bridge	18-Feb-11*	0		0%	254	Assumed receipt of tie Change Order (BDDI-IFC) - South Gyle Acc Bridge											
2A-24-CHGE-320	Assumed receipt of tie Change Order (BDDI-IFC) - Trackwork	18-Feb-11*	0	18-Feb-11	0%	377	Assumed receipt of tie Change Order (BDDI-IFC) - Trackwork											
2A-24-CHGE-330	Assumed receipt of tie Change Order (BDDI-IFC) - Bankhead TS	18-Feb-11*	0	18-Feb-11	0%	465	Assumed receipt of tie Change Order (BDDI-IFC) - Bankhead TS											
<b>Bankhead Drive Substation</b>		18-Mar-11	65	21-Jun-11		570												
5B-09-SUBS-90	Civil Engineering and Building Works	18-Mar-11	65	21-Jun-11	0%	570	5B-09-SUBS-90											
<b>Bankhead Retaining Wall (W11)</b>		13-Apr-11	30	27-May-11		800												
5B-09-W11-100(3)	Additional Excavation	13-Apr-11	10	28-Apr-11	0%	329	5B-09-W11-100(3) Additional Excavation											
5B-09-W11-100	Retaining Wall Construction	28-Apr-11	20	27-May-11	0%	329	5B-09-W11-100											
5B-09-JNCS-60	installation of traffic light control - Junction 202B-2	28-Apr-11	4	05-May-11	0%	816	5B-09-JNCS-60 installation of traffic light control - Junction 202B-2											
<b>South Gyle Access Bridge (S26)</b>		29-Sep-10 A	210	18-May-11		279												
5B-09-S26-25-00	S26 South Gyle Acc Br - NR Form C Submission & Approval - Sheet Piling to Emb	29-Sep-10 A	55	13-Apr-11	30%	236	5B-09-S26-25-00											
5B-09-S26-25-20	S26 South Gyle Acc Br - NR Form C Submission & Approval - Bored Piling platform to Abuts	10-Jan-11 A	55	13-May-11	45%	236	5B-09-S26-25-20											
5B-09-S26-25-40	S26 South Gyle Acc Br - CEC Form B Submission & Approval - Edge Cant Formwork	28-Feb-11	55	18-May-11	0%	279	5B-09-S26-25-40											
5B-09-S26-89(3)	Additional Excavation & Piling	13-Apr-11	20	13-May-11	0%	236	5B-09-S26-89(3)											
<b>Bankhead (exc.)(Ch.522,880) to Edinburgh Park Station (inc.)(Ch.523,740)</b>		19-Feb-10 A	198	14-Nov-11		106												
<b>Change</b>		18-Feb-11	0	18-Feb-11		220												
2A-24-CHGE-340	Assumed receipt of tie Change Order (BDDI-IFC) - Trackwork	18-Feb-11*	0	18-Feb-11	0%	106	2A-24-CHGE-340											
2A-24-CHGE-350	Assumed receipt of tie Change Order (BDDI-IFC) - Edinburgh Park TS	18-Feb-11*	0	18-Feb-11	0%	220	2A-24-CHGE-350											
<b>Trackwork (790m)</b>		19-Feb-10 A	182	03-Aug-11		106												
5B-08-TRCK-30	Earthworks and Subbase	19-Feb-10 A	15	05-Apr-11	19%	106	5B-08-TRCK-30											
5B-08-TRCK-50	OLE Foundations - Drainage	28-Jun-10 A	32	15-Jun-11	14%	106	5B-08-TRCK-50											
5B-08-TRCK-51	Additional drainage	28-Jun-10 A	29	19-Jul-11	19%	106	5B-08-TRCK-51											
5B-08-TRCK-40	Ducts and Bottom Ballast	15-Jul-10 A	16	03-Aug-11	34%	106	5B-08-TRCK-40											
5B-08-TRCK-31(3)	Additional Earthworks	05-Apr-11	21	06-May-11	0%	106	5B-08-TRCK-31(3)											
<b>Edinburgh Park Station Tram Stop</b>		19-Feb-10 A	65	14-Nov-11		106												
5B-08-TRMS-90	Civil Engineering and Builderworks	19-Feb-10 A	65	14-Nov-11	19%	106	5B-08-TRMS-90											
<b>Edinburgh Park Station (exc.)(Ch.523,740) to Edinburgh Park Central (inc.)(Ch.524,500)</b>		23-Nov-09 A	251	17-Jun-11		137												
<b>Change</b>		18-Feb-11	0	18-Feb-11		213												
2A-24-CHGE-360	Assumed receipt of tie Change Order (BDDI-IFC) - Trackwork	18-Feb-11*	0	18-Feb-11	0%	85	2A-24-CHGE-360											
2A-24-CHGE-370	Assumed receipt of tie Change Order (BDDI-IFC) - Edinburgh Park Central TS	18-Feb-11*	0	18-Feb-11	0%	213	2A-24-CHGE-370											
2A-24-CHGE-570	Assumed receipt of tie Change Order (BDDI-IFC) - Edinburgh Park Bridge	18-Feb-11*	0	18-Feb-11	0%	183	2A-24-CHGE-570											
<b>Trackwork (854m)</b>		16-Feb-10 A	251	17-Jun-11		85												
5B-07-TRCK-30	Earthworks- Subbase	16-Feb-10 A	11	25-Mar-11	50%	85	5B-07-TRCK-30											
5B-07-TRCK-01(3)10	Assumed receipt of tie Change Order - Drainage	18-Feb-11*	0		0%	147	5B-07-TRCK-01(3)10											
5B-07-TRCK-31(3)	Additional Earthworks	25-Mar-11	57	17-Jun-11	0%	85	5B-07-TRCK-31(3)											

Date	Revision	Checked	Approved
18-Feb-11	Construction Programme Updated V67 & Progress	JAC	

█ Actual Work    █ % Complete  
█ Normal        █ WBS Summary Activity  
◆ Milestone

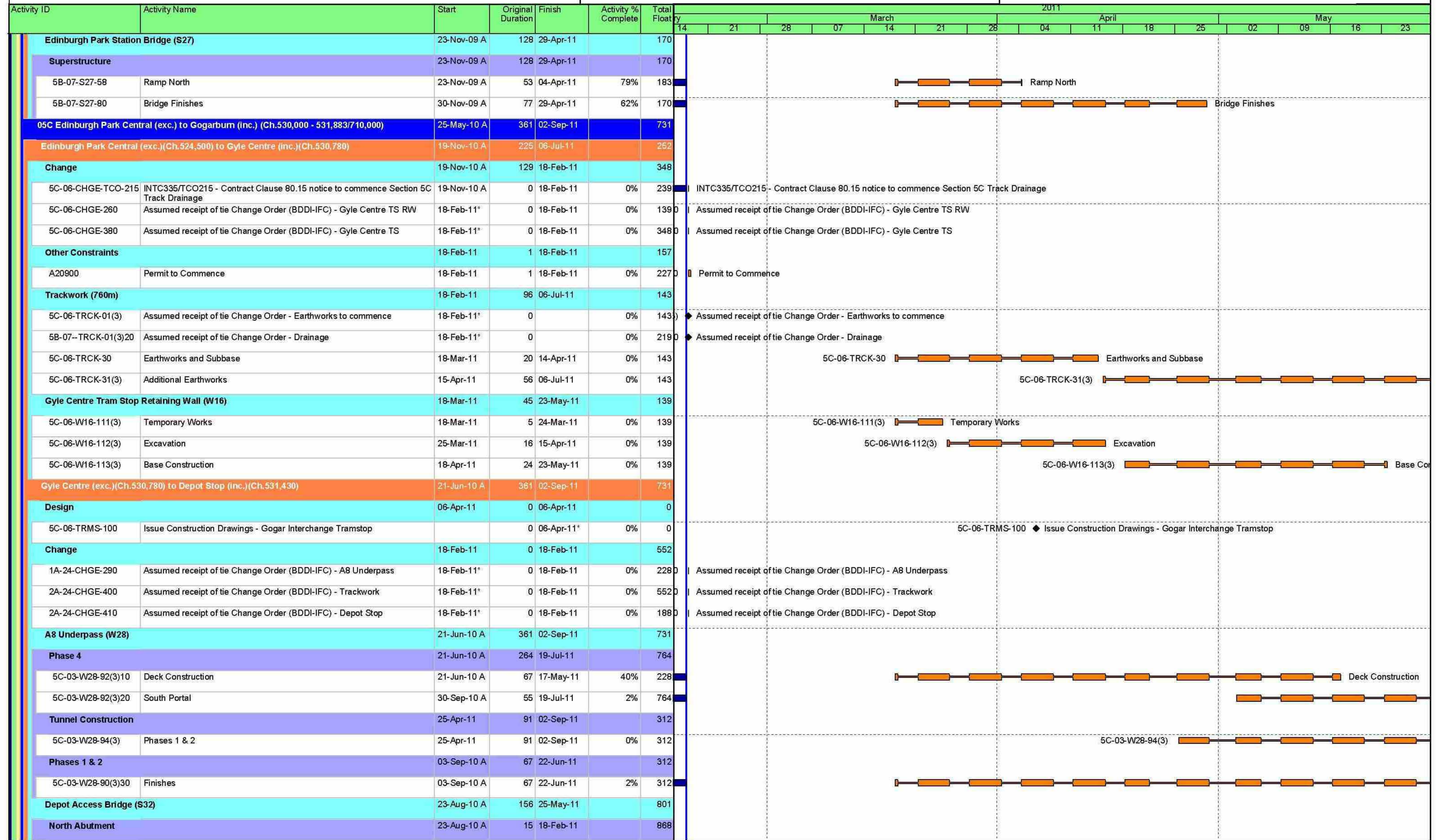
"This programme is provided for information and coordination purposes only; and without prejudice to the rights of the Infraco under the Agreement. This programme constitutes a target programme and as such, contains durations that are based on a risk profile not consistent with the Accepted Programme."

BFB00003289\_0276



**4 Week Look-Ahead Programme**  
**19 February - 18 March 2011 (extended to 13 May 2011)**

**EDINBURGH TRAM NETWORK**



Date	Revision	Checked	Approved
18-Feb-11	Construction Programme Updated V67 & Progress	JAC	

█ Actual Work    █ % Complete  
█ Normal        █ WBS Summary Activity  
◆ Milestone

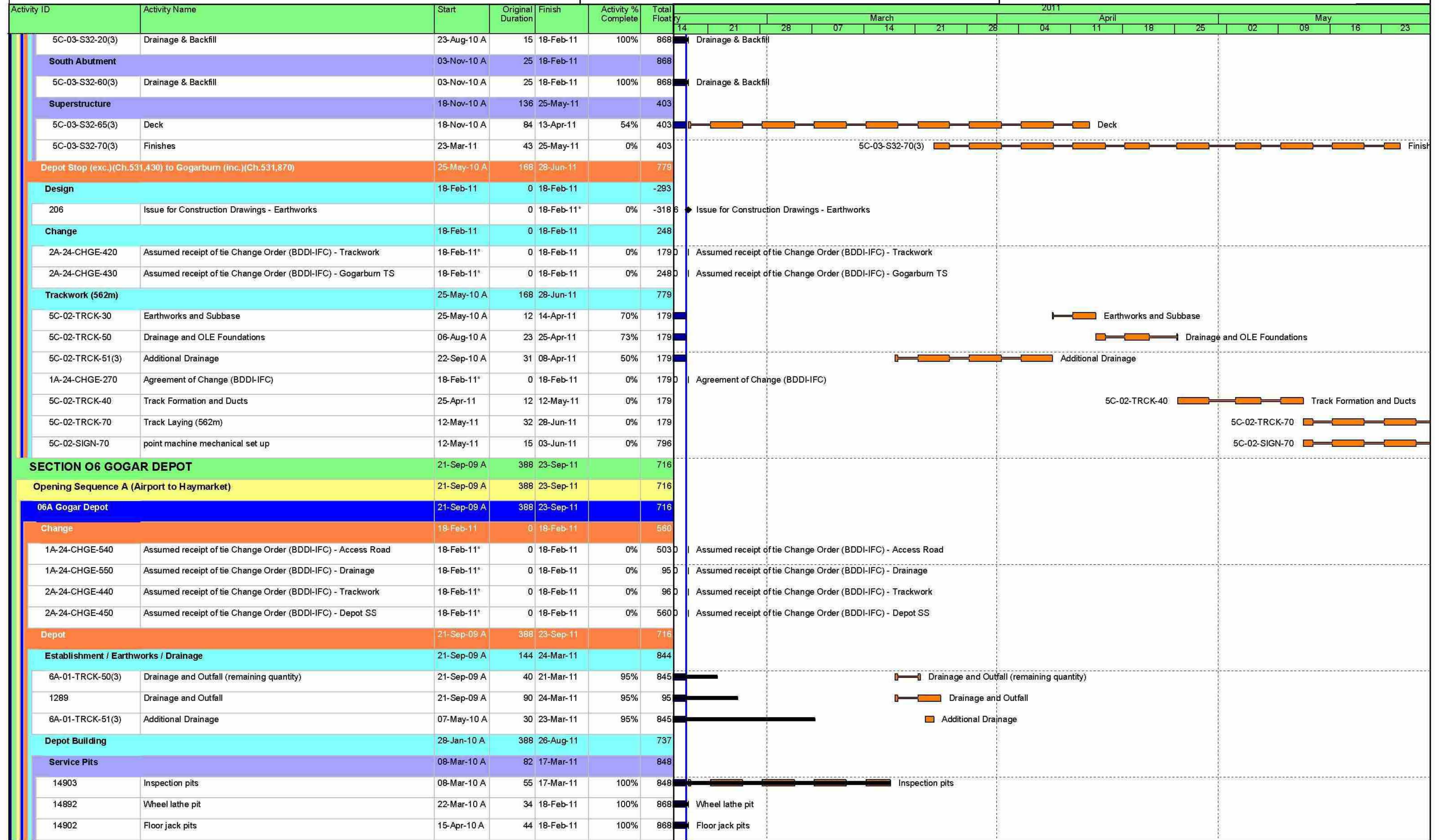
"This programme is provided for information and coordination purposes only, and without prejudice to the rights of the Infraco under the Agreement. This programme constitutes a target programme and as such, contains durations that are based on a risk profile not consistent with the Accepted Programme."

BFB00003289\_0277



**4 Week Look-Ahead Programme**  
**19 February - 18 March 2011 (extended to 13 May 2011)**

**EDINBURGH TRAM NETWORK**



Date	Revision	Checked	Approved
18-Feb-11	Construction Programme Updated V67 & Progress	JAC	

Page 21 of 24

- Actual Work
- Normal
- WBS Summary Activity
- Milestone
- % Complete

"This programme is provided for information and coordination purposes only, and without prejudice to the rights of the Infraco under the Agreement. This programme constitutes a target programme and as such, contains durations that are based on a risk profile not consistent with the Accepted Programme."

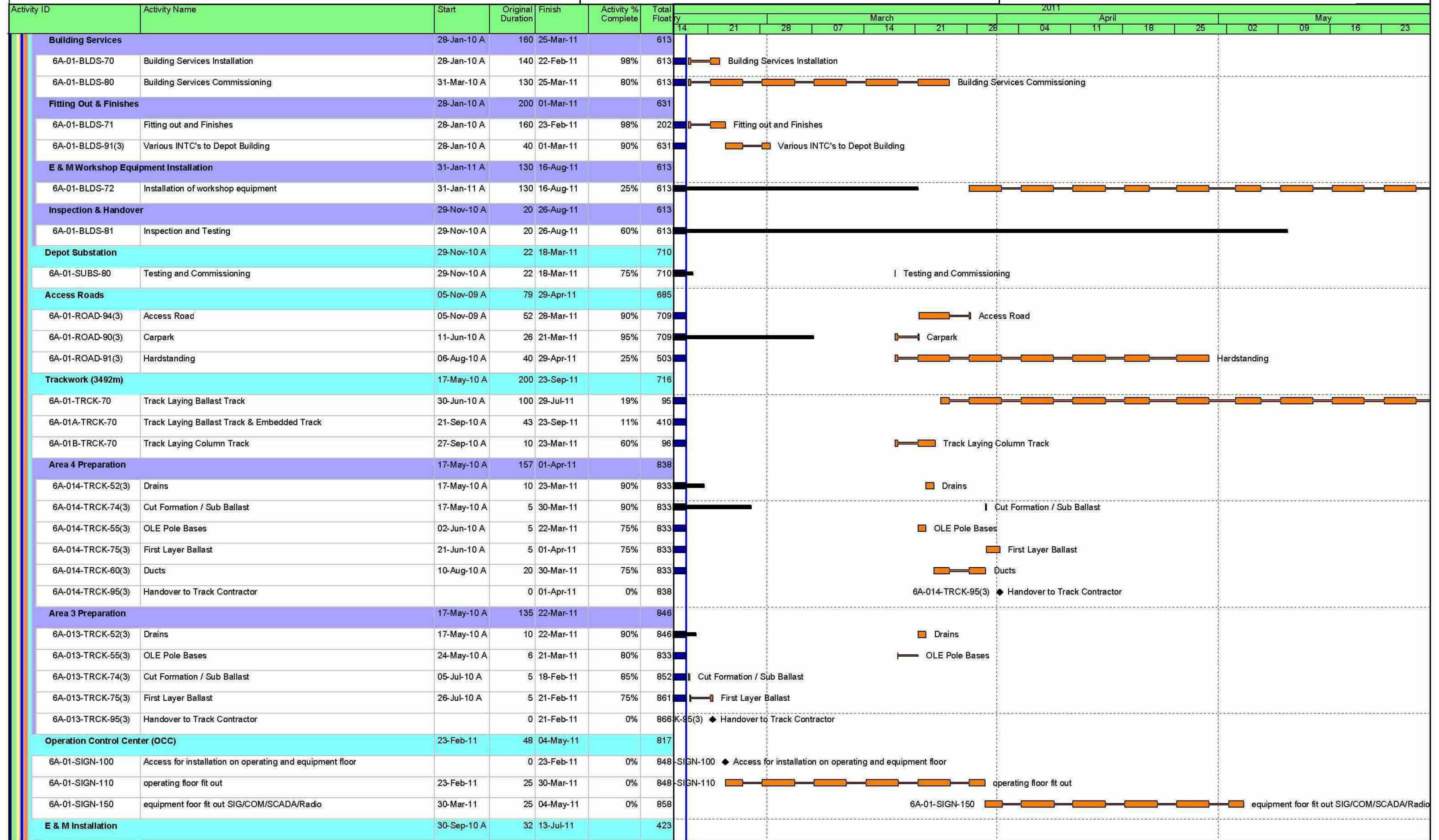
BFB00003289\_0278



# 4 Week Look-Ahead Programme

19 February - 18 March 2011 (extended to 13 May 2011)

# EDINBURGH TRAM NETWORK



Date	Revision	Checked	Approved
18-Feb-11	Construction Programme Updated V67 & Progress	JAC	

Page 22 of 24

- Actual Work
- Normal
- Milestone
- % Complete
- WBS Summary Activity

"This programme is provided for information and coordination purposes only; and without prejudice to the rights of the Infraco under the Agreement. This programme constitutes a target programme and as such, contains durations that are based on a risk profile not consistent with the Accepted Programme."

BFB00003289\_0279



4 Week Look-Ahead Programme

19 February - 18 March 2011 (extended to 13 May 2011)

EDINBURGH TRAM NETWORK



Activity ID	Activity Name	Start	Original Duration	Finish	Activity % Complete	Total Float	2011																	
							Feb	Mar	Apr	May														
6A-01-OHLE-50(3)	Installation of poles and building fixings (Depot)	30-Sep-10 A	32	13-Jul-11	45%	423	14	21	28	07	14	21	28	04	11	18	25	02	09	16	23			
<b>SECTION 07 GOGAR TO EDINBURGH AIRPORT</b>																								
<b>Opening Sequence A (Airport to Haymarket)</b>																								
<b>07A Gogarburn (exc.) to Edinburgh Airport (inc.) (Ch.710,000 - 712,579)</b>																								
<b>Gogarburn (exc.)(Ch.531,870) to Ingliston Park &amp; Ride (inc.)(Ch.711,580)</b>																								
<b>Design</b>																								
7a-04-ROAD-40	Re-Issue Construction Drawings - Roadwork			18-Feb-11*	0%	-101																		
<b>Change</b>																								
2A-24-CHGE-460	Assumed receipt of tie Change Order (BDDI-IFC) - Ingliston TS			18-Feb-11*	0%	328																		
2A-24-CHGE-470	Assumed receipt of tie Change Order (BDDI-IFC) - Culvert 1			18-Feb-11*	0%	868																		
2A-24-CHGE-480	Assumed receipt of tie Change Order (BDDI-IFC) - Culvert 2			18-Feb-11*	0%	868																		
2A-24-CHGE-490	Assumed receipt of tie Change Order (BDDI-IFC) - Culvert 3			18-Feb-11*	0%	868																		
2A-24-CHGE-500	Assumed receipt of tie Change Order (BDDI-IFC) - Gogarburn Bridge			18-Feb-11*	0%	855																		
2A-24-CHGE-510	Assumed receipt of tie Change Order (BDDI-IFC) - Trackwork			18-Feb-11*	0%	282																		
2A-24-CHGE-520	Assumed receipt of tie Change Order (BDDI-IFC) - Ingliston SS			18-Feb-11*	0%	570																		
<b>Trackwork (1750m)</b>																								
7A-04-TRCK-31(3)	Additional Earthworks	05-May-10 A	127	30-Mar-11	100%	282																		
7A-04-TRCK-30	Earthworks and Subbase	11-May-10 A	27	30-Mar-11	70%	282																		
7A-04-TRCK-50	Drainage and OLE Foundations	05-Jul-10 A	30	07-Apr-11	80%	282																		
7A-04-TRCK-40	Bottom Balast and Ducts	19-Jul-10 A	30	26-Apr-11*	60%	282																		
7A-04-TRCK-70	Track Laying (1750m)	26-Apr-11	50	07-Jul-11	0%	282																		
<b>Gogar Landfill Site</b>																								
7A-04-TRCK-110(3)	Three Months Settlement Period (provisional)	30-Jun-10 A	66	18-Feb-11	100%	379																		
7A-04-TRCK-120(3)	Remove Surcharge	13-Sep-10 A	32	20-Apr-11	25%	359																		
7A-04-TRCK-130(3)	Soil Nailing	21-Apr-11	60	18-Jul-11	0%	359																		
<b>Ingliston Park and Ride Substation</b>																								
1A-24-CHGE-280	Assumed receipt of tie Change Order (BDDI-IFC)			18-Feb-11*	0%	570																		
7A-04-SUBS-90	Civil Engineering and Building Works			18-Mar-11	65	21-Jun-11	0%	570																
<b>Ingliston Park &amp; Ride (exc.)(Ch.711,580) to Edinburgh Airport (inc.)(Ch.712,550)</b>																								
<b>Design</b>																								
7A-05-TRCK-10	Issue Construction Drawings Trackwork (New Ingliston Ltd)			18-Feb-11*	0%	277																		
7A-05-TRCK-20	Issue Construction Drawings Gogarburn RW's Redesign			18-Feb-11*	0%	86																		
7a-04-ROAD-70	Re-Issue Construction Drawings - Roadwork			18-Feb-11*	0%	-101																		
<b>Change</b>																								
2A-24-CHGE-530	Assumed receipt of tie Change Order (BDDI-IFC) - Gogarburn RW			18-Feb-11*	0%	216																		
2A-24-CHGE-540	Assumed receipt of tie Change Order (BDDI-IFC) - Edinburgh Airport TS			18-Feb-11*	0%	308																		
2A-24-CHGE-550	Assumed receipt of tie Change Order (BDDI-IFC) - Trackwork			18-Feb-11*	0%	287																		
<b>EAL Programme</b>																								

Date	Revision	Checked	Approved
18-Feb-11	Construction Programme Updated V67 & Progress	JAC	

■ Actual Work    ■ % Complete  
■ Normal        ■ WBS Summary Activity  
◆ Milestone

"This programme is provided for information and coordination purposes only, and without prejudice to the rights of the Infraco under the Agreement. This programme constitutes a target programme and as such, contains durations that are based on a risk profile not consistent with the Accepted Programme."

BFB00003289\_0280



**4 Week Look-Ahead Programme**  
**19 February - 18 March 2011 (extended to 13 May 2011)**

**EDINBURGH TRAM NETWORK**



Activity ID	Activity Name	Start	Original Duration	Finish	Activity % Complete	Total Float	2011														
							Feb	Mar	Apr	May	Feb	Mar	Apr	May	Feb	Mar	Apr	May			
<b>Procurement</b>							14	21	28	07	14	21	28	04	11	18	25	02	09	16	23
1A-24-CHGE-300	Assumed receipt of tie Change Order (BDDI-IFC)	18-Feb-11*	0	18-Feb-11	0%	156	Assumed receipt of tie Change Order (BDDI-IFC)														
7A-05-W14	Procure Sheet Piles	18-Mar-11	60	14-Jun-11	0%	156	7A-05-W14														
<b>Phase A</b>																					
7A-05-W14A-45(3)	OLE Foundations / Street Lighting	21-Jun-10 A	14	21-Mar-11	90%	306	OLE Foundations / Street Lighting														
7A-05-W14A-50(3)	Earthworks Finishes sand layer / sub base	03-Aug-10 A	5	21-Mar-11	75%	287	Earthworks Finishes sand layer / sub base														
<b>Phase B</b>																					
7A-05-W14B-10(3)	Earthworks (Fill 2300m3, Cut 2900m3, cap 660m3)	21-Jul-10 A	32	23-Mar-11	90%	216	Earthworks (Fill 2300m3, Cut 2900m3, cap 660m3)														
7A-05-W14B-15(3)	Drainage	03-Aug-10 A	10	23-Mar-11	85%	216	Drainage														
<b>Phase C</b>																					
7A-05-W14C-05(3)10	Resolve BAA Flood Risk Objection	18-Feb-11	100	12-Jul-11	0%	86	Resolve BAA Flood Risk Objection														
7A-05-W14C-05(3)	Obtain EAL Permit	04-Mar-11	90	12-Jul-11*	0%	86	7A-05-W14C-05(3)														
<b>Trackwork (833m)</b>																					
7A-05-TRCK-30	Earthworks and Subbase	12-Apr-10 A	114	01-Apr-11	95%	277	Earthworks and Subbase														
7A-05-TRCK-51(3)	Additional Drainage	14-May-10 A	7	22-Mar-11	90%	277	Additional Drainage														
7A-05-TRCK-40	Bottom Ballast and Ducts	21-Jun-10 A	16	01-Apr-11*	50%	277	Bottom Ballast and Ducts														
<b>CHANGE</b>																					
<b>INFRACO Notices of Tie Change (INTC)</b>																					
CR0085	"TNC008 - Lindsay Road Retaining Wall Cost Estimate (Now based on IFC Drawings as agreed with tie)"	02-Jul-08 A	832	18-Feb-11	100%	868	"TNC008 - Lindsay Road Retaining Wall Cost Estimate (Now based on IFC Drawings as agreed with tie)"														
INTC0112	Haymarket Viaduct	18-Feb-11	1	18-Feb-11	0%	1276	Haymarket Viaduct														
INTC0201	S32 Depot Access Bridge	18-Feb-11	0	18-Feb-11	0%	868	S32 Depot Access Bridge														

Date	Revision	Checked	Approved
18-Feb-11	Construction Programme Updated V67 & Progress	JAC	

Actual Work   
  % Complete  
 Normal   
  WBS Summary Activity  
 Milestone

"This programme is provided for information and coordination purposes only, and without prejudice to the rights of the Infraco under the Agreement. This programme constitutes a target programme and as such, contains durations that are based on a risk profile not consistent with the Accepted Programme."

BFB00003289\_0281



## **10.4 Tram Programme**



**INFORME DE AVANCE DE FABRICACIÓN**  
**MANUFACTURING STATUS**  
**“EDINBURGH TRAM”**

UNIT	STATUS
A-1	FATT issued
B-1	FATT issued
C-1	FATT issued
F-1	FATT issued
G-1	FATT issued
D-1	FATT issued
E-1	FATT issued

UNIT	STATUS
A-2	Delivered at Princes Street. FART issued
B-2	Delivered at Princes Street. FART issued
C-2	Delivered at Princes Street. FART issued
F-2	Delivered at Princes Street. FART issued
G-2	Delivered at Princes Street. FART issued
D-2	Delivered at Princes Street. FART issued
E-2	Delivered at Princes Street. FART issued

UNIT	STATUS
A-3	Ready for Transport, FART issued
B-3	Ready for Transport, FART issued
C-3	Ready for Transport, FART issued
F-3	Ready for Transport, FART issued
G-3	Ready for Transport, FART issued
D-3	Ready for Transport, FART issued
E-3	Ready for Transport, FART issued

UNIT	STATUS
A-4	Ready for Transport, FART issued
B-4	Ready for Transport, FART issued
C-4	Ready for Transport, FART issued
F-4	Ready for Transport, FART issued
G-4	Ready for Transport, FART issued
D-4	Ready for Transport, FART issued
E-4	Ready for Transport, FART issued

UNIT	STATUS
A-5	Ready for Transport, FART issued
B-5	Ready for Transport, FART issued
C-5	Ready for Transport, FART issued
F-5	Ready for Transport, FART issued
G-5	Ready for Transport, FART issued
D-5	Ready for Transport, FART issued
E-5	Ready for Transport, FART issued



**INFORME DE AVANCE DE FABRICACIÓN**  
**MANUFACTURING STATUS**  
**"EDINBURGH TRAM"**

UNIT	STATUS
A-6	Ready for Transport, FART issued
B-6	Ready for Transport, FART issued
C-6	Ready for Transport, FART issued
F-6	Ready for Transport, FART issued
G-6	Ready for Transport, FART issued
D-6	Ready for Transport, FART issued
E-6	Ready for Transport, FART issued

UNIT	STATUS
A-7	Ready for Transport, FART issued
B-7	Ready for Transport, FART issued
C-7	Ready for Transport, FART issued
F-7	Ready for Transport, FART issued
G-7	Ready for Transport, FART issued
D-7	Ready for Transport, FART issued
E-7	Ready for Transport, FART issued

UNIT	STATUS
A-8	Ready for Transport, FART issued
B-8	Ready for Transport, FART issued
C-8	Ready for Transport, FART issued
F-8	Ready for Transport, FART issued
G-8	Ready for Transport, FART issued
D-8	Ready for Transport, FART issued
E-8	Ready for Transport, FART issued

UNIT	STATUS
A-9	Ready for Transport, FART issued
B-9	Ready for Transport, FART issued
C-9	Ready for Transport, FART issued
F-9	Ready for Transport, FART issued
G-9	Ready for Transport, FART issued
D-9	Ready for Transport, FART issued
E-9	Ready for Transport, FART issued

UNIT	STATUS
A-10	Ready for Transport, FART issued
B-10	Ready for Transport, FART issued
C-10	Ready for Transport, FART issued
F-10	Ready for Transport, FART issued
G-10	Ready for Transport, FART issued
D-10	Ready for Transport, FART issued
E-10	Ready for Transport, FART issued



**INFORME DE AVANCE DE FABRICACIÓN**  
**MANUFACTURING STATUS**  
**"EDINBURGH TRAM"**

UNIT	STATUS
A-11	Ready for Transport, FART issued
B-11	Ready for Transport, FART issued
C-11	Ready for Transport, FART issued
F-11	Ready for Transport, FART issued
G-11	Ready for Transport, FART issued
D-11	Ready for Transport, FART issued
E-11	Ready for Transport, FART issued

UNIT	STATUS
A-12	Ready for Transport, FART issued
B-12	Ready for Transport, FART issued
C-12	Ready for Transport, FART issued
F-12	Ready for Transport, FART issued
G-12	Ready for Transport, FART issued
D-12	Ready for Transport, FART issued
E-12	Ready for Transport, FART issued

UNIT	STATUS
A-13	Ready for Transport, FART issued
B-13	Ready for Transport, FART issued
C-13	Ready for Transport, FART issued
F-13	Ready for Transport, FART issued
G-13	Ready for Transport, FART issued
D-13	Ready for Transport, FART issued
E-13	Ready for Transport, FART issued

UNIT	STATUS
A-14	Ready for Transport, FART issued
B-14	Ready for Transport, FART issued
C-14	Ready for Transport, FART issued
F-14	Ready for Transport, FART issued
G-14	Ready for Transport, FART issued
D-14	Ready for Transport, FART issued
E-14	Ready for Transport, FART issued

UNIT	STATUS
A-15	Ready for Transport, FART issued
B-15	Ready for Transport, FART issued
C-15	Ready for Transport, FART issued
F-15	Ready for Transport, FART issued
G-15	Ready for Transport, FART issued
D-15	Ready for Transport, FART issued
E-15	Ready for Transport, FART issued