

**INFORME DE AVANCE DE FABRICACIÓN**  
**MANUFACTURING STATUS**  
**“EDINBURGH TRAM”**

| UNIT | STATUS                           |
|------|----------------------------------|
| A-16 | Ready for Transport, FART issued |
| B-16 | Ready for Transport, FART issued |
| C-16 | Ready for Transport, FART issued |
| F-16 | Ready for Transport, FART issued |
| G-16 | Ready for Transport, FART issued |
| D-16 | Ready for Transport, FART issued |
| E-16 | Ready for Transport, FART issued |

| UNIT | STATUS                           |
|------|----------------------------------|
| A-17 | Ready for transport, FART issued |
| B-17 | Ready for transport, FART issued |
| C-17 | Ready for transport, FART issued |
| F-17 | Ready for transport, FART issued |
| G-17 | Ready for transport, FART issued |
| D-17 | Ready for transport, FART issued |
| E-17 | Ready for transport, FART issued |

| UNIT | STATUS                           |
|------|----------------------------------|
| A-18 | Ready for transport, FART issued |
| B-18 | Ready for transport, FART issued |
| C-18 | Ready for transport, FART issued |
| F-18 | Ready for transport, FART issued |
| G-18 | Ready for transport, FART issued |
| D-18 | Ready for transport, FART issued |
| E-18 | Ready for transport, FART issued |

| UNIT | STATUS                                   |
|------|--|
| A-19 | Ready for transport, FART will be issued |
| B-19 | Ready for transport, FART will be issued |
| C-19 | Ready for transport, FART will be issued |
| F-19 | Ready for transport, FART will be issued |
| G-19 | Ready for transport, FART will be issued |
| D-19 | Ready for transport, FART will be issued |
| E-19 | Ready for transport, FART will be issued |

| UNIT | STATUS                                   |
|------|--|
| A-20 | Ready for transport, FART will be issued |
| B-20 | Ready for transport, FART will be issued |
| C-20 | Ready for transport, FART will be issued |
| F-20 | Ready for transport, FART will be issued |
| G-20 | Ready for transport, FART will be issued |
| D-20 | Ready for transport, FART will be issued |
| E-20 | Ready for transport, FART will be issued |

**INFORME DE AVANCE DE FABRICACIÓN**  
**MANUFACTURING STATUS**  
**"EDINBURGH TRAM"**

| UNIT | STATUS                                   |
|------|--|
| A-21 | Ready for transport, FART will be issued |
| B-21 | Ready for transport, FART will be issued |
| C-21 | Ready for transport, FART will be issued |
| F-21 | Ready for transport, FART will be issued |
| G-21 | Ready for transport, FART will be issued |
| D-21 | Ready for transport, FART will be issued |
| E-21 | Ready for transport, FART will be issued |

| UNIT | STATUS        |
|------|---------------|
| A-22 | Factory tests |
| B-22 | Factory tests |
| C-22 | Factory tests |
| F-22 | Factory tests |
| G-22 | Factory tests |
| D-22 | Factory tests |
| E-22 | Factory tests |

| UNIT | STATUS                          |
|------|---------------------------------|
| A-23 | Coupled. To begin factory tests |
| B-23 | Finishing process               |
| C-23 | Finishing process               |
| F-23 | Finishing process               |
| G-23 | Finishing process               |
| D-23 | Finishing process               |
| E-23 | Finishing process               |

| UNIT | STATUS            |
|------|-------------------|
| A-24 | Finishing process |
| B-24 | Finishing process |
| C-24 | Finishing process |
| F-24 | Finishing process |
| G-24 | Finishing process |
| D-24 | Finishing process |
| E-24 | Finishing process |

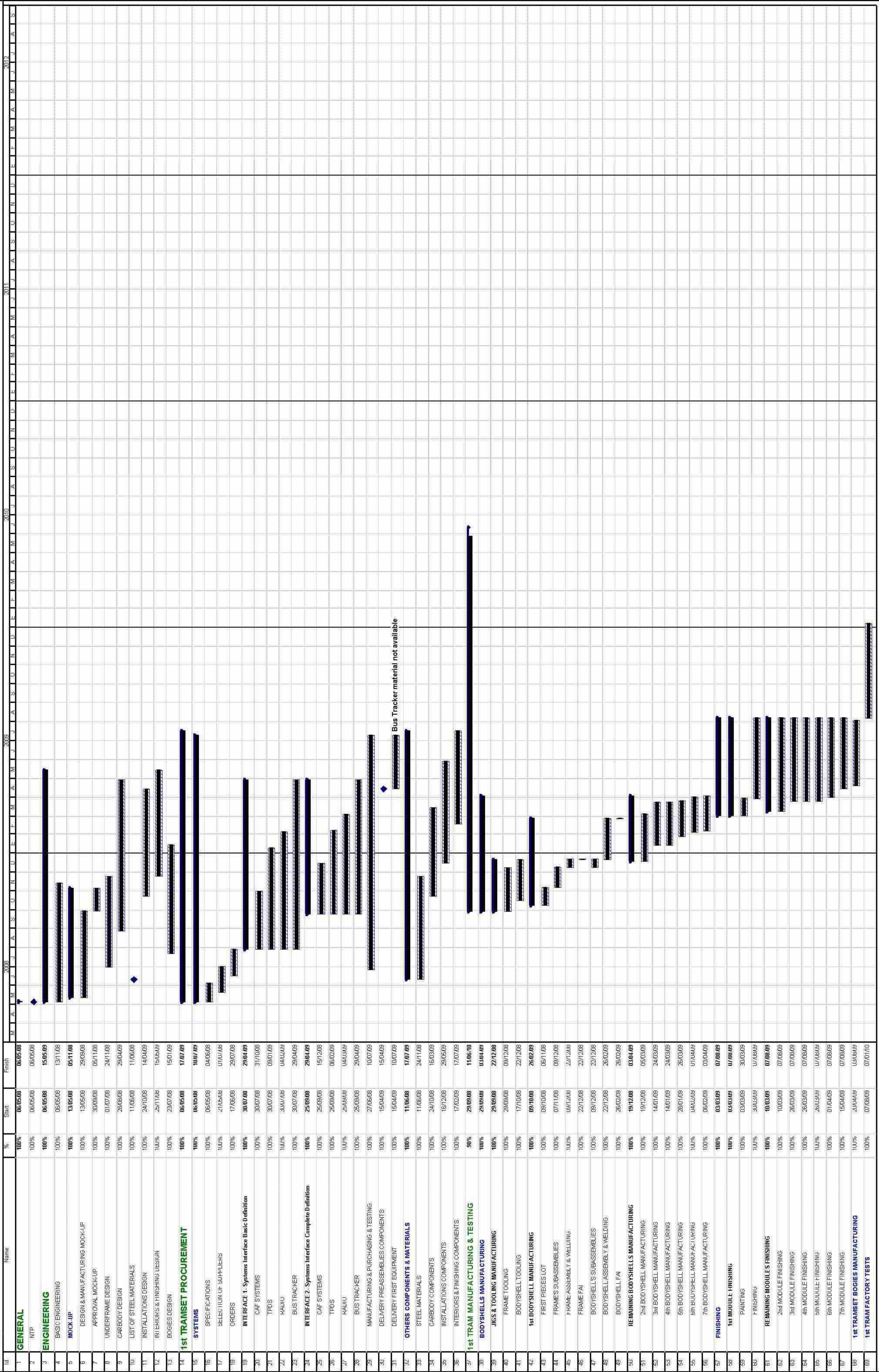
| UNIT | STATUS            |
|------|-------------------|
| A-25 | Finishing process |
| B-25 | Finishing process |
| C-25 | Finishing process |
| F-25 | Finishing process |
| G-25 | Finishing process |
| D-25 | Finishing process |
| E-25 | Finishing process |

**INFORME DE AVANCE DE FABRICACIÓN**  
**MANUFACTURING STATUS**  
**"EDINBURGH TRAM"**

| UNIT | STATUS            |
|------|-------------------|
| A-26 | Finishing process |
| B-26 | Finishing process |
| C-26 | Finishing process |
| F-26 | Finishing process |
| G-26 | Finishing process |
| D-26 | Finishing process |
| E-26 | Finishing process |

| UNIT | STATUS            |
|------|-------------------|
| A-27 | Finishing process |
| B-27 | Finishing process |
| C-27 | Finishing process |
| F-27 | Finishing process |
| G-27 | Finishing process |
| D-27 | Finishing process |
| E-27 | Finishing process |

*Signed:* Gorka Galdeano  
CAF Q.A.

















## **10.5 RFI Register**

## Civil Process Register

**Company** Bilfinger Berger Civil  
**Channel** ETN (<http://etn.mybiw.com>)



| Status                     | System Ref | WorkPackage Ref | Publishing Company     | Title  | Content  | Publishing User | Issued Date |
|----------------------------|------------|-----------------|------------------------|--|--|-----------------|-------------|
| Open                       | RFI-00277  |                 | Bilfinger Berger Civil | Haymarket Viaduct and Haymarket Yards                        | Could tie confirm if the works to Haymarket Viaduct and the Haymarkets yards area, are included within the embargo. (See attached RFI).  | Hornsby, Andy   | 08/07/2010  |
| Need further clarification | RFI-00278  |                 | Bilfinger Berger Civil | BAA Canopy & Kiosk   | Please would tie advise on the following queries in relation to the Airport Canopy and Kiosk works.<br><ul style="list-style-type: none"> <li>• Location and position of existing Main Water or proposed if BAA are diverting - tie will require a meter system – please advise</li> <li>• Mains incoming supply for kiosk and canopy - location of existing or if BAA are diverting - plus meter location of proposed works</li> <li>• Foul connection to existing - check if new loads can cope with a WC and Kitchen waste on the existing system – BAA to advise and report to tie</li> <li>• Surface water discharge point to existing - if there is a singular system and not combined - positions and locations</li> <li>• G.I report for the location on the canopy and kiosk – report required for S.E. works and conditions</li> </ul> | Simon,Nesbitt   | 05/08/2010  |
| Open                       | RFI-00281  |                 | Bilfinger Berger Civil | Section 1A Tower Place Bridge utility diversion              | Reference Drawing ULE90130-01-UTL-00712 rev4 and the MUDFA drawing ULE90130-01-ASB-00011 rev1.<br>Could tie please confirm what other (if any) utility works are required in the area of tower Place Bridge and Victoria Bridge.   | Crawford,Iain   | 12/08/2010  |
| Open                       | RFI-00282  |                 | Bilfinger Berger Civil | Scottish Water Foul Sewer Diversion Ch 523+670 to Ch 523+750 | Drawing ref ULE90130-05-UTL-00418 v2 shows the existing Foul Sewer, conflict ref 5B/FS/05 that is to be diverted with the existing manhole and sewer to be abandoned. It appears that this diversion has not been carried out and there remains a conflict with an OLE Foundation, see attached sketch.<br>Please confirm your programme for completing service diversions in this area to allow our works to progress.  | Duncan,Lambert  | 12/08/2010  |
| Open                       | RFI-00286  |                 | Bilfinger Berger Civil | ULE90130-05-LDS-00001  | Further to the Informatives Workshop on 27 January 2011 where Mr Damian Sharp of tie stated that the landscaping works at the Russell Road TPH site were not to be carried out, please confirm by return that this proposal is acceptable to tie (and CEC) and that this modification can be captured in the as built drawings without any amendment to the design drawing ULE90130-05-LDS-00001.  | Simon,Nesbitt   | 28/01/2011  |

BFB00003289\_0297

**Bilfinger Berger – Siemens – CAF Consortium**

## **10.6 Civil Works Procurement Schedule**

| Subcontract Procurement / Register<br>Contract : Edinburgh Tram Network |                          |  |         |                                      |    | BILFINGER BERGER<br>UK Limited    |        | Appendix 10.6         |        |  |                            |  |                                  |                            |                                  |                           |                  |                  |                               |                    |              |            |                     |                          |  |
|---|--------------------------|--|---------|--------------------------------------|----|-----------------------------------|--------|-----------------------|--------|--|----------------------------|--|----------------------------------|----------------------------|----------------------------------|---------------------------|------------------|------------------|-------------------------------|--------------------|--------------|------------|---------------------|--------------------------|--|
|   |                          |  |         |                                      |    | PROGRAMME REQUIREMENTS            |        |                       |        |  |                            | PROCESSES                              |                                  |                            |                                  |                           |                  |                  |                               |                    |              |            |                     |                          |  |
| Enquiry Ref Number  | Subcontract Order Number | Subcontract Trade                        | Section | Company                              | OS | Enquiry Needs Sent Out By (F74-3) | Status | Order Needs Placed By | Status | Letter of Intent Issued / Limited Order to Proceed | Required for Start on Site | Design Package Issued for Construction | F74-01 Subcontract Questionnaire | F74-9 Questionnaire Review | F519-1 Subcontract Questionnaire | F74-14 Authority to Place | CI 28.2 Approval | CI 28.4 Approval | F74-4 Pre-Award/Start Meeting | F74-5 Quality Plan | Order Issued | Order Back | F74-11 Starter Form | F74-2 Performance Review |  |
| 1   |                          | Land Surveys (SW)                        | SW      | Becker Geomatics Ltd                 | KB | n/a                               | ✓      | n/a                   | ✓      | n/a  | n/a                        | n/a                                    | ✓                                |                            |                                  |                           | n/a              |                  | ✓                             |                    | ✓            | ✓          | ✓                   |                          |  |
| 2   |                          | Tree Felling / Advance Works (SW)        | SW      | W Laing                              | JT | n/a                               | ✓      | n/a                   | ✓      | n/a  | n/a                        |  |                                  |                            |                                  |                           | n/a              |                  | ✓                             |                    | ✓            | ✓          | ✓                   |                          |  |
| 3   |                          | Site Clearance / Civils Package (7A)     | 7A      | Farrans (Construction) Ltd           | DG | n/a                               | ✓      | n/a                   | ✓      |  | n/a                        |  | ✓                                |                            |                                  |                           | n/a              |                  |                               |                    | ✓            |            | ✓                   |                          |  |
| 4   |                          | Setting Out Engineers / Advance Works    | SW      | Beattie Chalmers Ltd                 | JT | n/a                               | ✓      | n/a                   | ✓      |  | n/a                        |  | n/a                              |                            |                                  |                           | n/a              |                  |                               |                    | ✓            | ✓          | ✓                   |                          |  |
| 5   |                          | Demolition of Caley Alehouse             | 2A      | John Graham (Dromore) Ltd            | DG | n/a                               | ✓      | n/a                   | ✓      |  | 16-Jun-08                  |  | ✓                                |                            |                                  |                           | n/a              |                  |                               |                    | ✓            |            | ✓                   |                          |  |
| 9   |                          | Existing Road Surveys                    | SW      | Mouchel                              | KB | n/a                               | ✓      | n/a                   | ✓      | n/a  | 23-Jun-08                  |  | ✓                                |                            |                                  |                           | n/a              |                  | ✓                             |                    | ✓            | ✓          | ✓                   |                          |  |
| 10  |                          | Erection of Temporary Trackside Fencing  | 5       | Lumberjax Environmental              | JT | n/a                               | ✓      | n/a                   | ✓      |  | 21-Jun-08                  |  |                                  | ✓                          |                                  |                           | n/a              |                  |                               | ✓                  | ✓            | ✓          | ✓                   |                          |  |
| 11  |                          | Civils Package                           | 7A/5C   | Farrans (Construction) Ltd           | DG | 16-Jun-08                         |        | 28-Jul-08             |        | 06-Aug-08  | 04-Aug-08                  |  | ✓                                | ✓                          |                                  |                           |                  |                  | ✓                             |                    |              |            | ✓                   |                          |  |
| 12  |                          | Civils Package                           | 2A1D5A  | John Graham (Dromore) Ltd            | GA | 23-Jun-08                         |        | 21-Jul-08             |        |  | 02-Mar-09                  |  | ✓                                |                            |                                  | ✓                         |                  |                  | ✓                             |                    | ✓            |            |                     |                          |  |
| 17  |                          | Temporary Works Design                   | SW      | Tony Gee                             | TG | 12-May-08                         | ✓      | 23-Jun-08             |        | 30-Jun-08  | n/a                        |  | ✓                                |                            |                                  |                           | n/a              |                  |                               |                    |              |            | ✓                   |                          |  |
| 18  |                          | Formwork, Rebar, Concrete                | 5       | Expanded Ltd                         | GA | 23-Jun-08                         | ✓      | 21-Jul-08             |        | 29-May-09  | 18-Aug-08                  |  | ✓                                |                            | n/a                              |                           | n/a              |                  |                               |                    |              |            |                     |                          |  |
| 20  |                          | PC Beams                                 | 5       | Banagher                             | TG | 23-Jun-08                         | ✓      | 20-Oct-08             | ✓      |  | 01-Dec-08                  |  |                                  |                            |                                  |                           | ✓                |                  |                               |                    |              |            |                     |                          |  |
| 21  |                          | Site Clearance                           | 5       | Edinburgh Woodland                   | JT | 04-May-09                         | ✓      | 19-May-09             | ✓      | n/a  | 25-Jun-09                  |  |                                  |                            |                                  |                           | n/a              |                  | ✓                             | n/a                | ✓            | ✓          | ✓                   |                          |  |
| 23  |                          | A8 Lighting Column Relocation            | 5       | Harte Lighting & TRL Signs           | JT |                                   |        | 18-Jan-09             | ✓      | n/a  | 18-Jan-09                  |  | ✓                                | ✓                          |                                  |                           | ✓                |                  |                               | n/a                | ✓            | ✓          | ✓                   |                          |  |
| 24  |                          | Photography                              | SW      | White House Studios                  | KB | 04-Jun-08                         | ✓      | 16-Jul-08             | ✓      | n/a  | 23-Jul-08                  |  | ✓                                |                            | n/a                              |                           | n/a              |                  | ✓                             | n/a                | ✓            | ✓          | ✓                   |                          |  |
| 25  |                          | Structural Steel                         | 5       | Fairfield Mabey                      | GA | Jan 08                            | ✓      |                       |        | 26-Jun-08  | 01-Dec-08                  | 28-Jul-08                              | ✓                                | ✓                          | n/a                              |                           | ✓                |                  |                               |                    |              |            | ✓                   |                          |  |
| 26  |                          | Traffic Management (SW)                  | SW      | Class One                            | TG |                                   | ✓      | 22-Jul-08             |        | 22-Jul-08  | 05-Aug-08                  |  | ✓                                | ✓                          | ✓                                |                           | n/a              |                  | ✓                             | ✓                  |              |            |                     |                          |  |
| 34  |                          | Designers                                | SW      | Parsons Brickerhoff                  | KB |                                   |        |                       |        |  |                            |  |                                  | ✓                          |                                  |                           | ✓                |                  |                               |                    |              |            | ✓                   |                          |  |
| 38  |                          | Civils Package                           | 6       | Barr Ltd                             | DG | 26-May-08                         | ✓      | 07-Jul-08             | ✓      | 02-Jun-08  | 04-Aug-08                  |  | ✓                                | n/a                        |                                  |                           |                  |                  | ✓                             |                    | ✓            | ✓          |                     |                          |  |
| 39  |                          | Murrayfield Clubhouse                    | 5A      | BMR Developments                     | JT | 09-Mar-09                         | ✓      | 07-Sep-09             |        | n/a  | 07-Sep-09                  |  | ✓                                | ✓                          |                                  |                           | ✓                |                  | ✓                             | n/a                | ✓            |            | ✓                   |                          |  |
| 42  |                          | Property Conditions Survey               | SW      |                                      | DG |                                   |        |                       |        |  |                            |  |                                  | ✓                          |                                  |                           | n/a              |                  |                               |                    |              |            |                     |                          |  |
| 44  |                          | Site Investigation Works                 | 5       | Raeburn                              | JT | 02-Jun-08                         | ✓      | 30-Jun-08             | ✓      | n/a  | 07-Jul-08                  |  |                                  |                            |                                  |                           | n/a              |                  | ✓                             | n/a                | ✓            | ✓          | ✓                   |                          |  |
| 45  |                          | Civils Package                           | 1B      | Crummock                             | DG | 04-Aug-08                         | ✓      | 10-Oct-08             |        | 10-Sep-08  | 06-Oct-08                  | 07-Jul-08                              | ✓                                |                            | ✓                                | ✓                         | ✓                |                  | ✓                             | ✓                  |              |            | ✓                   |                          |  |
| 46  |                          | Civils Package                           | 1D      | Mackenzie                            | DG | 04-Aug-08                         | ✓      | 27-Oct-08             |        | 17-Dec-08  | 05-Jan-09                  | 04-Jul-08                              | ✓                                | ✓                          | ✓                                | ✓                         |                  |                  | ✓                             |                    |              |            | ✓                   |                          |  |
| 48  |                          | Control Network Survey Check - Site Wide | SW      | L & M Surveys                        | KB | 03-Jul-08                         | ✓      | 14-Jul-08             | ✓      | n/a  | 14-Jul-08                  |  | ✓                                | n/a                        | n/a                              |                           | ✓                |                  | ✓                             | n/a                | ✓            | ✓          | ✓                   |                          |  |
| 49  |                          | Civils                                   | CW      | Land & Building Services             | DG | 14-Jul-08                         | ✓      |                       | ✓      | n/a  |                            |  | ✓                                | ✓                          |                                  | ✓                         | ✓                |                  | ✓                             | n/a                | ✓            | ✓          | ✓                   |                          |  |
| 53  |                          | Acoustic Monitoring                      | SW      | RMP Acoustic Consultants             | KB | n/a                               | ✓      | 20-Jul-08             | ✓      |  | 27-Jul-08                  |  | ✓                                |                            | ✓                                |                           | n/a              |                  | ✓                             |                    | ✓            | ✓          | ✓                   |                          |  |
| 55  |                          | BT Duct & Cable works                    | SW      | Fujitsu                              | CF | n/a                               | ✓      | 12-Oct-09             | ✓      |  | 20-Oct-09                  |  | ✓                                |                            | n/a                              | ✓                         |                  |                  | ✓                             |                    | ✓            | ✓          | ✓                   |                          |  |
| 58  |                          | Ecologist                                | SW      | JDC Ecology Ltd                      | KB |                                   | ✓      |                       | ✓      |  |                            |  |                                  |                            |                                  |                           |                  |                  | ✓                             |                    | ✓            | ✓          | ✓                   |                          |  |
| 60  |                          | Demolition                               | SW      | Hunter Demolition                    | SK | 14-Jul-08                         | ✓      | 01-Aug-08             | ✓      | 28-Jul-08  | 18-Aug-08                  |  | ✓                                |                            | n/a                              | ✓                         |                  |                  | ✓                             |                    | ✓            | ✓          | ✓                   |                          |  |
| 61  |                          | Archaeology                              | SW      | Glasgow University Research Division | TG | n/a                               | ✓      | n/a                   | ✓      | n/a  | 04-Aug-08                  |  | n/a                              |                            | n/a                              |                           |                  |                  | ✓                             | n/a                | ✓            | ✓          | ✓                   |                          |  |
| 65  |                          | Supply of CRE                            | SW      | Siemens TS                           | SK | n/a                               | ✓      | n/a                   | ✓      | n/a  | n/a                        |  | n/a                              |                            | n/a                              |                           |                  |                  | n/a                           | n/a                | ✓            | ✓          | ✓                   |                          |  |
| 70  |                          | Groundworks                              | 5       | Gallagher Goundworks                 | SK | 25-Jul-08                         | ✓      | 04-Aug-08             | ✓      | n/a  | 11-Aug-08                  |  |                                  |                            |                                  |                           | n/a              |                  |                               |                    | ✓            | ✓          | ✓                   |                          |  |
| 73  |                          | Edinburgh Park Hoarding                  | 5       | Rapid Hoard Ltd                      | JT | 01-Aug-08                         | ✓      | 15-Aug-08             | ✓      | n/a  | 29-Aug-08                  |  | ✓                                |                            | ✓                                |                           | n/a              |                  | ✓                             | n/a                | ✓            | ✓          | ✓                   |                          |  |
| 74  |                          | A8 Underpass                             | 5       | Expanded Piling Ltd                  | GA | 06-Aug-08                         | ✓      | 03-Sep-08             | ✓      | 15-Sep-08  | 15-Sep-08                  |  | ✓                                | ✓                          | ✓                                | ✓                         | ✓                |                  | ✓                             | ✓                  |              |            | ✓                   |                          |  |
| 77  |                          | Temporary Traffic Signals                | SW      |                                      | DG |                                   |        |                       |        | n/a  | 02-Oct-08                  |  | n/a                              |                            |                                  |                           |                  |                  |                               |                    |              |            |                     |                          |  |
| 81  |                          | Section 5 Structures                     | 5       | Expanded Structures Ltd              | GA | 03-Oct-08                         | ✓      | n/a                   |        | 05-Nov-08  | Nov 08                     |  | ✓                                | ✓                          | n/a                              | ✓                         | ✓                |                  | ✓                             |                    |              |            | ✓                   |                          |  |
| 82  |                          | Japanese Knotweed Eradication            | 5       | TCM Ltd                              | GA | 16-Sep-08                         | ✓      | n/a                   | ✓      | 30-Sep-08  | 20-Oct-08                  |  | ✓                                |                            | n/a                              |                           |                  |                  | ✓                             | n/a                | ✓            | ✓          | ✓                   |                          |  |

Key : F74-1 Subcontractor Questionnaire; F74-2 Subcontract Performance Appraisal; F74-3 Subcontract Enquiry (letter); F74-4 Subcontractor Pre-Award/ Start Meeting; F74-5 Subcontract Quality Plan; F519-1 Subcontract Environmental Questionnaire

BFB00003289\_0299

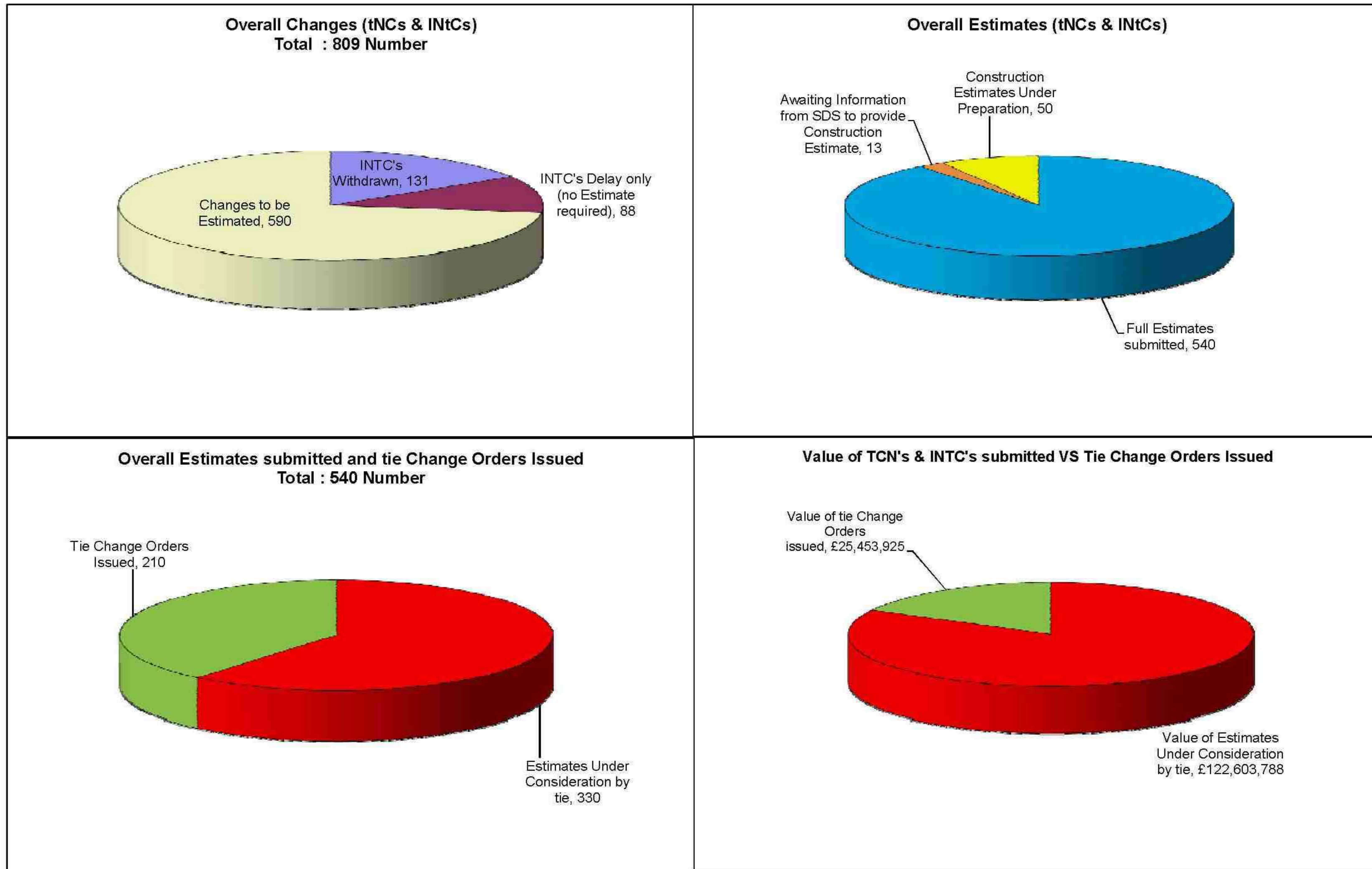
| Subcontract Procurement / Register<br>Contract : Edinburgh Tram Network |                          |  |         |                             |     | BILFINGER BERGER<br>UK Limited    |        |                       |        |  |                            |  |                                  |                            |                                  |                           |                  |                  |                               |                    |              | Appendix 10.6 |                     |                          |  |
|---|--------------------------|--|---------|-----------------------------|-----|-----------------------------------|--------|-----------------------|--------|--|----------------------------|--|----------------------------------|----------------------------|----------------------------------|---------------------------|------------------|------------------|-------------------------------|--------------------|--------------|---------------|---------------------|--------------------------|--|
|   |                          |  |         |                             |     | PROGRAMME REQUIREMENTS            |        |                       |        |  |                            | PROCESSES                              |                                  |                            |                                  |                           |                  |                  |                               |                    |              |               |                     |                          |  |
| Enquiry Ref Number  | Subcontract Order Number | Subcontract Trade                        | Section | Company                     | §   | Enquiry Needs Sent Out By (F74-3) | Status | Order Needs Placed By | Status | Letter of Intent Issued / Limited Order to Proceed | Required for Start on Site | Design Package Issued for Construction | F74-01 Subcontract Questionnaire | F74-9 Questionnaire Review | F519-1 Subcontract Questionnaire | F74-14 Authority to Place | CI 28.2 Approval | CI 28.4 Approval | F74-4 Pre-Award/Start Meeting | F74-5 Quality Plan | Order Issued | Order Back    | F74-11 Starter Form | F74-2 Performance Review |  |
| 84  |                          | Site Clearance                           | 5       | D Methuen Turnstone Ltd     | JT  | n/a                               | ✓      | 15-Sep-08             | ✓      | n/a  | 16-Sep-08                  |  |                                  |                            | n/a                              |                           | n/a              |                  | ✓                             | n/a                | ✓            | ✓             | ✓                   |                          |  |
| 85  |                          | Traffic Management Design                |         | Faber Maunsell              | SK  | 12-Sep-08                         | ✓      | 08-Oct-08             | ✓      | n/a  | 10-Oct-08                  |  |                                  |                            | n/a                              | ✓                         |                  |                  |                               |                    | ✓            | ✓             | ✓                   |                          |  |
| 86  |                          | Steel Foundations                        | S27     | Steel Foundations Ltd       | DT  |                                   |        |                       |        | 14-Oct-08  | 15-Oct-08                  |  | ✓                                | ✓                          | n/a                              | ✓                         |                  |                  | ✓                             | n/a                |              |               | ✓                   |                          |  |
| 87  |                          | Temporary Sheet Piling Carrick Knowe     | S23     | McGrattan Piling Ltd        | DT  | 06-Oct-08                         | ✓      | 20-Oct-08             |        | 05-Nov-08  | 20-Nov-08                  |  | ✓                                |                            | n/a                              |                           |                  |                  | ✓                             |                    |              |               | ✓                   |                          |  |
| 88  |                          | Civils Package                           | 1A1     | Included in 89              | SK  | 03-Oct-08                         | ✓      |                       |        |  |                            |  | ✓                                |                            | n/a                              |                           | n/a              |                  |                               |                    |              |               |                     |                          |  |
| 89  |                          | Civils Package                           | 1A2     | McKean                      | SK  | 03-Oct-08                         | ✓      | 02-Sep-09             |        | 10-Jun-09  | 13-Jul-09                  |  | ✓                                |                            | n/a                              |                           |                  |                  |                               |                    |              |               |                     |                          |  |
| 90  |                          | W1, S16, S17 - Structures                | 1A      | Included in 89              | SK  | 03-Oct-08                         | ✓      |                       |        |  |                            |  | ✓                                |                            | n/a                              |                           | n/a              |                  |                               |                    |              |               |                     |                          |  |
| 91  |                          | Temporary Traffic Signals                |         | Lochwynd                    | SK  |                                   |        | 21-Nov-08             | ✓      |  | 12-Dec-08                  |  | ✓                                |                            | n/a                              | ✓                         | n/a              |                  |                               |                    |              | ✓             | ✓                   | ✓                        |  |
| 95  |                          | Site Clearance                           | 5B / 5C | MW Groundworks Ltd          | JT  | 28-Nov-08                         | ✓      | 12-Dec-08             |        | n/a  | 22-Dec-08                  |  | ✓                                | ✓                          | n/a                              |                           | ✓                |                  | ✓                             | n/a                | ✓            | ✓             | ✓                   |                          |  |
| 96  |                          | Fencing to Consortium Office             |         | William Houston Landscaping | JT  | 19-Dec-08                         | ✓      | 16-Jan-09             | ✓      | n/a  |                            |  | ✓                                | ✓                          | n/a                              |                           | n/a              |                  |                               | n/a                | ✓            | ✓             | ✓                   |                          |  |
| 100   |                          | Temporary Traffic Signals                | 1       | Siemens Traffic Controls    | SK  |                                   |        |                       | ✓      | 09-Jan-09  | 10-Jan-09                  |  | n/a                              |                            | n/a                              | ✓                         |                  |                  | n/a                           | n/a                | ✓            | ✓             | ✓                   |                          |  |
| 101   |                          | Amendments to Existing Traffic Signals   | 1       | Telent                      | SK  | n/a                               |        | 19-Jan-09             | ✓      | n/a  | 26-Jan-09                  |  | ✓                                |                            | n/a                              | ✓                         | n/a              |                  |                               |                    | ✓            | ✓             | ✓                   |                          |  |
| 102   |                          | Amendments to Existing Traffic Signals   | 1       | Peek                        | SK  | n/a                               |        | 19-Jan-09             | ✓      | n/a  | 26-Jan-09                  |  | ✓                                |                            | n/a                              | ✓                         | n/a              |                  | n/a                           | ✓                  | ✓            |               | ✓                   |                          |  |
| 103   |                          | Earthworks                               | 6       | Duncan Collier Haulage      | JL  |                                   |        |                       |        | 03-Apr-09  | 04-Apr-09                  |  | ✓                                |                            | n/a                              | ✓                         | n/a              |                  | ✓                             | ✓                  | ✓            | ✓             | ✓                   |                          |  |
| 104   |                          | Civils Package                           | 1C2     |                             | SS  |                                   |        |                       |        |  |                            |  |                                  |                            | n/a                              |                           |                  |                  |                               |                    |              |               |                     |                          |  |
| 107   |                          | A8 Underpass Sheet Piling                | 5C      | McGrattan Piling Ltd        | DAT | 01-Nov-08                         |        | 16-Mar-09             | ✓      | 05-Mar-09  | 06-Apr-09                  |  | ✓                                |                            | n/a                              | ✓                         |                  |                  | ✓                             |                    | ✓            | ✓             | ✓                   |                          |  |
| 108   |                          | Substation Prefab Buildings              | SW      | Portastor                   | SK  | 01-Mar-09                         | ✓      | 01-Jul-10             |        |  |                            |  | ✓                                |                            | n/a                              |                           |                  |                  |                               |                    |              |               |                     |                          |  |
| 109   |                          | Environmental Emergency Response         | SW      | DAMM Environmental Ltd      | JL  | 04-May-09                         | ✓      | 04-Jun-09             |        | 26-Jun-09  | 26-Jun-09                  |  | ✓                                |                            | n/a                              | ✓                         |                  |                  | ✓                             |                    | ✓            | ✓             | ✓                   |                          |  |
| 110   |                          | Temporary Lighting                       | 5B      | City of Edinburgh Council   | JL  | 02-Jun-09                         | ✓      | 13-Jul-09             |        | 26-Jun-09  | 27-Jun-09                  |  | ✓                                |                            | n/a                              | ✓                         |                  |                  |                               |                    | ✓            | ✓             | ✓                   |                          |  |
| 111   |                          | OHLE Piling Contractors (Guided Busway)  | 5       | MG Construction             | JL  |                                   | ✓      |                       |        | 07-Aug-09  | 24-Aug-09                  |  | ✓                                |                            | n/a                              | ✓                         |                  |                  | ✓                             |                    | ✓            |               | ✓                   |                          |  |
| 112   |                          | Site clearance - billboards              | 5       | Primesight Limited          | JT  | n/a                               | ✓      | 01-Apr-11             |        |  | 01-Apr-11                  |  |                                  |                            | n/a                              |                           |                  |                  |                               |                    |              |               |                     |                          |  |
| 118   |                          | Temporary Staircase - JB McLean Building | 2A      | Interserve                  | DT  |                                   |        | 04-Jan-10             |        |  | 06-Jan-10                  |  | ✓                                |                            | n/a                              | ✓                         |                  |                  | ✓                             |                    | ✓            | ✓             | ✓                   |                          |  |
| 122   |                          | Power Cable Diversions                   | 5C      |                             | CF  |                                   |        |                       |        |  |                            |  |                                  |                            | n/a                              |                           |                  |                  |                               |                    |              |               |                     |                          |  |
|   |                          | Tramstop Shelters & Ancillary Equipment  | SW      | RWS                         | SK  | 01-Mar-09                         | ✓      | 01-Jul-10             |        |  |                            |  | ✓                                |                            | n/a                              |                           |                  |                  |                               |                    |              |               |                     |                          |  |

BFB00003289\_0300

## **10.7 Change Register**



**INFRACO ESTIMATES SUBMITTED VS TIE CHANGE ORDERS ISSUED  
STATUS AT 10 February 2011**



EDINBURGH TRAM NETWORK  
 INFRACO CHANGE REGISTER  
 CONFIDENTIAL

| GENERAL INFORMATION |     |     |                        |                     |   |              |            |                |             |                                     |            |             |                    |     | FINANCIAL INFORMATION |  |           |           |     |           |        |                    |               |           |        |
|---------------------|-----|-----|------------------------|---------------------|---|--------------|------------|----------------|-------------|-------------------------------------|------------|-------------|--------------------|-----|-----------------------|--|-----------|-----------|-----|-----------|--------|--------------------|---------------|-----------|--------|
| References          |     |     | Location / Description |                     |   | Notification |            | Type of Change |             | Principle of Change Status with tie |            |             | Actions / Comments |     |                       | Value of Estimate Submission / Change Order (£GBP) |           |           |     |           |        |                    |               |           |        |
| INTC                | INC | ICO | Section                | Activity Identifier | Brief Description of Change   | Date         | Letter Ref | Type           | Change Type | Agreed                              | Not Agreed | No Decision | BSC                | Tie | By Date               | SDS  | BBUK      | Siemens   | CAF | Sub-total | OH & P | Consortium Prelims | Other Prelims | Total     |        |
| 1                   |     | 116 | SW                     | Preliminaries       | The Issued for Construction (IFC) dates from the Design Delivery Programme have been entered into the Schedule Part 15 Programme and there are differences from the Base Case Assumption resulting in a Notified Departure - SECTIONS A,B,C & D   | 21-May-08    | 138        | D              | -1          | 2871                                |            |             |                    |     |                       |  | 2,225,000 | 1,299,000 |     | 3,524,000 | incl   | incl               | incl          | 3,524,000 |        |
| 2                   |     |     | 7A                     | Accommodation Works | Instruction to proceed with the Hilton Hotel Car Park (Letter FICU Infraco 211U dated 15/05/08) is work in respect of Undefined Provisional Sum Item 1 Accommodation Works, in Schedule Part 4 Appendix B Table 2   | 21-May-08    | 136        | D              | -4          |                                     | 1          |             |                    | Tie |                       |  | 76,236    |           |     | 76,236    | 7,624  | 5,642              | 13,342        | 102,845   |        |
| 3                   |     | 43  | SW ON                  | Site Investigation  | Receipt of letter PRO Infraco 2106 dated 9 May 2008 instructing us to proceed with road surveys   | 21-May-08    | 138        | D              | -1          | 1561                                |            |             |                    |     |                       |  | 66,012    |           |     | 66,012    | 6,601  | 4,886              | 11,552        | 89,050    |        |
| 4                   |     |     | 5A                     | Preliminaries       | Received the letter PRO Infraco 2107 dated 9 May 2008 instructing us to proceed with Russell Road Bridge in advance of receiving IFC drawings which is a notified departure and mandatory be Change   | 21-May-08    | 138        | M              | -1          |                                     |            | 1           |                    | BSC |                       | TBA  |           |           |     |           |        |                    |               |           |        |
| 5                   |     |     | 2A                     | Preliminaries       | Received the letter PRO Infraco 2108 dated 9 May 2008 instructing us to proceed with Haymarket Viaduct in advance of receiving IFC drawings which is a notified departure and mandatory be Change   | 21-May-08    | 136        | M              | -1          |                                     |            | 1           |                    | BSC |                       | TBA  |           |           |     |           |        |                    |               |           |        |
| 6                   |     |     | 7A                     | Preliminaries       | Received the letter PRO Infraco 2109 dated 9 May 2008 instructing us to proceed with Gogarburn Bridge in advance of receiving IFC drawings (read as Surcharge subject to be confirmation)   | 21-May-08    | 136        | M              | -1          |                                     |            | 1           |                    | BSC |                       | TBA  |           |           |     |           |        |                    |               |           |        |
| 7                   |     | 17  | 2A                     | Highways            | The Representatives request for a hard standing at Haymarket Yards  | 23-May-08    | 138        | D              | -1          | 654                                 |            |             |                    |     |                       |  | 750       |           |     | 750       | 75     | 56                 |               | 881       |        |
| 8                   |     |     | SW                     | Withdrawn           | Various Drawing Errors since the base Date Design Information amending the Design prepared by the SDS Provider  | 26-May-08    | 143        | D              |             |                                     |            |             |                    |     |                       |  |           |           |     |           |        |                    |               |           |        |
| 9                   |     |     | 7A                     | Preliminaries       | The GUARD archaeological dig currently ongoing in the area of Gogar Tramstop is delaying and disrupting the Infraco in accessing Gogar Landfill and establishment of the site offices for Section 7   | 26-May-08    | 143        | M              | -1          |                                     |            | 1           |                    | BSC |                       | TBA  |           |           |     |           |        |                    |               |           |        |
| 10                  |     |     | 5C                     | Preliminaries       | The GUARD archaeological dig currently ongoing in the area of Gogar Tramstop is delaying and disrupting the Infraco in accessing and establishment of the site offices for Section 5C   | 26-May-08    | 143        | M              | -1          |                                     |            | 1           |                    | BSC |                       | TBA  |           |           |     |           |        |                    |               |           |        |
| 11                  |     |     | 5C                     | Withdrawn           | The GUARD archaeological dig currently ongoing in the area of Gogar Tramstop is delaying and disrupting the Infraco in accessing and establishment of the site offices for Section 5C   | 26-May-08    | 143        | M              |             |                                     |            |             |                    |     |                       |  |           |           |     |           |        |                    |               |           |        |
| 12                  |     |     | 7A                     | Preliminaries       | The GUARD archaeological dig currently ongoing in the area of Gogar Tramstop is causing damage to the tram corridor between Ch 710000 - 710300. This area will need to be made good once the topsoil removal is complete potentially delaying and disrupting the Infraco Works  | 26-May-08    | 143        | M              | -1          |                                     |            | 1           |                    | BSC |                       |  |           |           |     |           |        |                    |               |           |        |
| 13                  |     |     | SW UFF                 | Withdrawn           | Notified Departure in accordance with paragraph 3.4.5.1 and 3.5 Schedule Part 4 due to UEC Planning consents delay as communicated to tie by SDS by email on 21/05/08 in connection with Hoxburn Terrace bridge, Tramstop and Retaining Walls A and B between 3 April and 28 April 2008; specifically but is an ongoing problem throughout the Infraco Contract | 26-May-08    | 143        | U              |             |                                     |            |             |                    |     |                       |  |           |           |     |           |        |                    |               |           |        |
| 14                  |     |     | 6                      | Withdrawn           | Notified Departure in accordance with paragraph 3.4.5.1 and 3.5 Schedule Part 4 due to the MUDFA Contractor not having completed the 800mm dia Water Main diversion in the Depot area in accordance with the requirements of the Programme causing delay and disruption to the Infraco's intended sequence  | 26-May-08    | 143        | M              | -1          |                                     |            |             |                    | BSC |                       | TBA 15/01/10                                       |           |           |     |           |        |                    |               |           |        |
| 15                  |     |     | 6                      | Withdrawn           | Notified Departure in accordance with paragraph 3.4.5.1 and 3.5 Schedule Part 4 due to the MUDFA Contractor not having completed the 250mm dia Water Main diversion in the Depot area in accordance with the requirements of the Programme causing delay and disruption to the Infraco's intended sequence  | 26-May-08    | 143        | M              | -1          |                                     |            |             |                    | BSC |                       | TBA 15/01/10                                       |           |           |     |           |        |                    |               |           |        |
| 16                  |     |     | 6                      | Withdrawn           | Notified Departure in accordance with paragraph 3.4.5.1 and 3.5 Schedule Part 4 due to the MUDFA Contractor not having completed the 1500mm dia Sewer diversion in the Depot area in accordance with the requirements of the Programme causing delay and disruption to the Infraco's intended sequence  | 26-May-08    | 143        | M              | -1          |                                     |            |             |                    | BSC |                       | TBA 15/01/10                                       |           |           |     |           |        |                    |               |           |        |
| 17                  |     |     | 5C                     | Withdrawn           | Notified Departure in accordance with paragraph 3.4.5.1 and 3.5 Schedule Part 4 due to conflict with the 1500mm dia Deep sewer under the MUDFA Contract with the South Gyle Access Bridge west abutment piled foundations potentially causing delay and disruption to the Infraco's intended sequence   | 26-May-08    | 143        | D              |             |                                     |            |             |                    |     |                       |  |           |           |     |           |        |                    |               |           |        |
| 17A                 |     |     | 5B                     | Preliminaries       | Notified Departure in accordance with paragraph 3.4.5.1 and 3.5 Schedule Part 4 due to conflict with the 1500mm dia Deep sewer under the MUDFA Contract with the South Gyle Access Bridge west abutment Proceed with Design for Option 4.D530   | 05-Feb-09    | 145        | U              | -1          |                                     |            | 1           |                    | BSC |                       | TBA  | 61,843    |           |     | 61,843    | 6,184  | 4,576              |               | 72,604    |        |
| 18                  |     |     | 6                      | Preliminaries       | Notified Departure in accordance with paragraph 3.4.5.1 and 3.5 Schedule Part 4 due to the MUDFA Contractor not having completed the various Utility Diversions in the Depot area in accordance with the requirements of the Programme causing delay and disruption to the Infraco's intended sequence. Site Offices and Compound                               | 30-May-08    | 147        | D              | -1          |                                     |            |             |                    | BSC |                       | 06/02/09   |           | 33,170    |     | 33,170    | 3,317  | 2,456              | 5,806         |           | 44,746 |
| 19                  |     | 1   | 2A                     | Demolition          | Retrospective instruction to carry out Archaeological Survey to the Caley Ale House as per letter UEL CURH 1/b dated 8th May 2008   | 02-Jun-08    | 147        | U              | -1          | 4017                                |            |             |                    |     |                       |  | 4,430     |           |     | 4,430     | 443    | 326                | 775           | 5,974     |        |
| 20                  |     |     | 2A                     | Withdrawn           | Disconnect utilities to Caley Ale House prior to demolition as per email (Alester Sim) dated 12th March 2008 which is an Undefined Provisional Sum requiring an instruction in accordance with Schedule Part 4 paragraph 4.5 Appendix B Part 3 Table 2 Item 1   | 02-Jun-08    | 147        | D              |             |                                     |            |             |                    |     |                       |  |           |           |     |           |        |                    |               |           |        |
| 21                  |     | 2   | 2A                     | Demolition          | Notified Departure in accordance with 3.4.37 and 3.5 Schedule Part 4 due to the Asbestos Survey carried out by tie and the presence of Asbestos in the Caledonian Ale House causing delay and disruption to the Infraco's intended programme and method of work   | 02-Jun-08    | 147        | U              | -1          | 4017                                |            |             |                    |     |                       |  | 4,488     |           |     | 4,488     | 449    | 332                | 785           | 6,054     |        |
| 22                  |     |     | 2A                     | Preliminaries       | Notified Departure in accordance with paragraph 3.4.37 and 3.5 Schedule Part 4 due to the Asbestos Survey to be carried out by tie and the presence of Asbestos in the existing Steps to Haymarket Station Carpark causing delay and disruption to the Infraco's intended programme and method of work  | 02-Jun-08    | 147        | M              | -1          |                                     |            | 1           |                    | BSC |                       | TBA  |           |           |     |           |        |                    |               |           |        |
| 23                  |     | 12  | 2A                     | Demolition          | Notified Departure in accordance with paragraph 3.4.36 and 3.5 Schedule Part 4 due to the additional requirement to demolish the access steps to Haymarket Station Carpark causing delay and disruption to the Infraco's intended programme and method of work  | 02-Jun-08    | 147        | D              | -1          | 4017                                |            |             |                    |     |                       |  | 1,750     |           |     | 1,750     | 175    | 130                | 306           | 2,361     |        |

BFB00003289\_0303



| GENERAL INFORMATION |     |     |                        |                           |  |              |            |                |             |                                     |            |             |                    |     | FINANCIAL INFORMATION |  |        |         |         |           |        |                    |               |         |        |  |
|---------------------|-----|-----|------------------------|---------------------------|--|--------------|------------|----------------|-------------|-------------------------------------|------------|-------------|--------------------|-----|-----------------------|--|--------|---------|---------|-----------|--------|--------------------|---------------|---------|--------|--|
| References          |     |     | Location / Description |                           |  | Notification |            | Type of Change |             | Principle of Change Status with tie |            |             | Actions / Comments |     |                       | Value of Estimate Submission / Change Order (£GBP) |        |         |         |           |        |                    |               |         |        |  |
| INTC                | TNC | ICO | Section                | Activity Identifier       | Brief Description of Change  | Date         | Letter Ref | Type           | Change Type | Agreed                              | Not Agreed | No Decision | BSC                | tie | By Date               | SDS  | BBUK   | Siemens | CAF     | Sub-total | OH & P | Consortium Prelims | Other Prelims | Total   |        |  |
| 55                  |     |     | 3                      | Preliminaries             | Delay and Disruption due to late approval by CEC of SDS27880 - RC Roads, Street Lighting, Landscaping as SDS Letter 00266 dated 8th July 2008 and in accordance with Schedule Part 4 paragraph 3.4.1.3   | 29-Jul-08    | 319        | M              | 1           |                                     |            | 1           | BSC                |     | TBA                   |  |        |         |         |           |        |                    |               |         |        |  |
| 56                  |     |     | 1A                     | Preliminaries             | Delay and Disruption by CEC due to late registering Section 1A, Batch 1/08 (Foot of the walk, Tramstop and associated line of road) as SDS Letter 00221 dated 11th July 2008 and in accordance with Schedule Part 4 paragraph 3.4.1.3                              | 24-Jul-08    | 319        | M              | 1           |                                     |            | 1           | BSC                |     | TBA                   |  |        |         |         |           |        |                    |               |         |        |  |
| 57                  |     |     | 1U                     | Preliminaries             | Delay and Disruption due to late approval by CEC of Section 1U as SDS Letter 00722 dated 7th July 2008 and in accordance with Schedule Part 4 paragraph 3.4.1.3  | 29-Jul-08    | 319        | M              | 1           |                                     |            | 1           | BSC                |     | TBA                   |  |        |         |         |           |        |                    |               |         |        |  |
| 58                  |     |     | 1D                     | Preliminaries             | Delay and Disruption due to notification from CEC with respect to road safety Auditors comments for Haymarket Area of Section 1D as SDS Letter 00733 dated 11th July 2008 and in accordance with Schedule Part 4 paragraph 3.4.1.3                                 | 29-Jul-08    | 319        | M              | 1           |                                     |            | 1           | BSC                |     | TBA                   |  |        |         |         |           |        |                    |               |         |        |  |
| 59                  | 5   | 5   | SW OFF                 | Contamination             | Notified Departure in accordance with 3.4.3/ and 3.5 Schedule Part 4 due to the Asbestos Survey carried out by tie and the presence of Asbestos in Plots 5, 7, 10, 11, 13 & 15 causing delay and disruption to the Infraco's intended programme and method of work | 31-Jul-08    | 337        | M              | 1           | 4074                                |            |             |                    |     |                       | 22,200   |        |         |         | 22,200    | 2,200  | 1,843              | 3,885         |         | 29,948 |  |
| 60                  |     | 146 | 7A                     | Utilities                 | Diversion of Existing Sewer at Gogarburn Bridge due to conflict with the existing 300mm dia combined sewer with the Gogarburn Bridge concrete piling potentially causing delay and disruption to the Infraco's intended sequence                                   | 24-Jul-08    | 363        | M              | 1           | 5505                                |            |             |                    |     |                       |  | 8,173  | 19,279  |         |           | 27,453 | 2,004              | 2,031         | 4,804   | 36,292 |  |
| 61                  |     |     | 7A                     | Design                    | Infraco to investigate proposals for the re-use of the HBS's bundled Material within the final design  | 06-Aug-08    | 366        | M              | 1           | 1                                   |            |             | BSC                |     | 14/05/10              | 1,994  | 77,855 |         |         | 79,847    | 199    | 5,884              | 13,939        | 99,679  |        |  |
| 62                  |     |     | 7A                     | Withdrawn                 | Draw down from United Provisional Item 2 - Scottish Power connections to the Depot and Ingliston Park & Ride and Item 11 - Scottish Power connections to Phase 1a sub-stations, in Schedule Part 4 Appendix B Table 1  | 08-Aug-08    | #050009    | D              |             |                                     |            |             |                    |     |                       |  |        |         |         |           |        |                    |               |         |        |  |
| 63                  |     |     | SW                     | OLE                       | Tensioning of Overhead Contact System - tensioning method, comprising an Auto Tensioned Trolley Wire for the street turning area and Auto Tensioned Catenary System for Haymarket (exclusive) to the Airport   | 15-Aug-08    | #050012    | M              | 1           |                                     |            | 1           |                    |     | tie                   |  |        |         |         |           |        |                    |               |         |        |  |
| 64                  | 9   |     | 1A                     | Highways                  | TINC009 - Ocean Terminal Revised Finishes  | 29-Jul-08    | T.027      | I              | 1           | 27                                  |            |             | BSC                |     | 13/08/10<br>27/08/10  |  | 3,879  |         |         | 3,879     |        | incl               | 287           |         | 4,166  |  |
| 65                  |     |     | 5A                     | Design                    | Murrayfield Stadium Retaining Walls - Introduce visual pattern to Murrayfield RTW  | 23-Jul-08    | 369        | M              | 1           | 6237                                |            |             |                    |     | tie                   |  | 2,363  |         |         | 2,363     | 238    | 176                |               | 2,797   |        |  |
| 66                  | 13  |     | 7A                     | Withdrawn                 | INC 013 - Revised Specification (RBS) Gogarburn Tramstop - feasibility cost for revised tramstop based on Ulog and Smith feasibility   | 23-Jul-08    | 1.052      | I              |             |                                     |            |             |                    |     |                       |  |        |         |         |           |        |                    |               |         |        |  |
| 66a                 |     |     | 5C                     | Design                    | Revised Specification (RBS) Gogarburn Tramstop version 2   | 15-Oct-08    | 188        | I              | 1           |                                     | 1          |             |                    |     | tie                   |  | 7,664  |         |         | 7,664     |        | incl               | 587           |         | 8,251  |  |
| 66b                 |     |     | 5C                     | Design                    | Revised Specification (RBS) Gogarburn Tramstop version 2   | 01-Feb-10    | 3361/GMCG  | I              | 1           | 1                                   |            |             |                    | BSC |                       |  |        |         |         |           |        |                    |               |         |        |  |
| 67                  |     |     | 5A                     | Design                    | Murrayfield Tramstop - Provision of secondary staircase  | 16-Jul-08    | 364        | M              | 1           | 6238                                |            |             |                    | BSC |                       | TBA  | 27,430 |         |         | 27,430    | 2,743  | 2,030              |               | 32,203  |        |  |
| 68                  |     |     | SW OFF                 | Preliminaries             | Delay to issue of Edinburgh Park - Earthworks and Drainage IFC Drawings as a result of delayed drainage consents   | 22-Aug-08    | 406        | M              | 1           |                                     |            | 1           | BSC                |     | 21/11/08<br>TBA       |  |        |         |         |           |        |                    |               |         |        |  |
| 69                  |     |     | 5B                     | Preliminaries             | Lytle Stop retaining Walls   | 22-Aug-08    | 407        | M              | 1           |                                     |            | 1           | BSC                |     | TBA                   |  |        |         |         |           |        |                    |               |         |        |  |
| 70                  |     |     | 5B                     | Withdrawn                 | Blankhead Retaining Walls - Failure by MUDFA to complete works   | 22-Aug-08    | 408        | M              | 1           |                                     |            |             | BSC                |     | TBA                   |  |        |         |         |           |        |                    |               |         |        |  |
| 71                  |     |     | 1B                     | Preliminaries             | FeW to Balfour Street IFC Drawings (As B8)   | 22-Aug-08    | 409        | M              | 1           |                                     |            | 1           | BSC                |     | 06/12/08<br>TBA       |  |        |         |         |           |        |                    |               |         |        |  |
| 72                  |     |     | 2A                     | Preliminaries             | Haymarket to Roseburn Junction - SW Consent Issue (as B8)  | 22-Aug-08    | 410        | M              | 1           |                                     |            | 1           | BSC                |     | 05/12/08<br>TBA       |  |        |         |         |           |        |                    |               |         |        |  |
| 73                  |     |     | 5A                     | Withdrawn                 | Russell Road Retaining Wall - Contamination Knotweed   | 22-Aug-08    | 411        | M              |             |                                     |            |             |                    |     |                       |  |        |         |         |           |        |                    |               |         |        |  |
| 74                  |     | 63  | 7A                     | Utilities                 | Sewer Diversion, Gogar Landfill  | 05-Aug-08    | T.075      | M              | 1           | 1598                                |            |             |                    |     |                       |  | 1,335  |         |         | 1,335     |        |                    | 99            |         | 1,434  |  |
| 74a                 |     | 189 | 7A                     | Utilities                 | Gogar Landfill Embankment Sewer Diversion - Installation Flexible Sleeve   | 06-Sep-10    | b664       | M              | 1           | 1                                   |            |             |                    |     |                       |  | 2,146  |         |         | 2,146     | 215    | 159                | 375           |         | 2,884  |  |
| 75                  |     | 27  | 6                      | Earthworks                | Temporary Access Ramp from Depot   | 05-Aug-08    | T.076      | M              | 1           | 4017                                |            |             |                    |     |                       |  | 12,086 |         |         | 12,086    | 1,209  | 894                | 2,115         |         | 16,304 |  |
| 76                  | 15  | 131 | 5C                     | Edinburgh Gateway Project | Gogar Depot Public Tramstop proposals Guide to Railway Improvement Projects (GRIP) options 4B & 4C2  | 08-Aug-08    | T.096      | I              | 1           | 3154                                |            |             | BSC                |     | 18/12/08<br>06/08/10  | 341,318  |        | 326,723 | 668,041 | 34,132    | 25,259 |                    |               | 727,430 |        |  |
| 76.1                |     | 184 | 5C                     | Edinburgh Gateway Project | Gogar Depot Public Tramstop proposals Guide to Railway Improvement Projects (GRIP) options 4B & 4C2  | 01-Jan-00    |            | I              | 1           | 6093                                |            |             |                    |     |                       |  |        |         |         |           |        |                    |               |         |        |  |
| 76a                 |     |     | 5C                     | Tramstops                 | Gogar additional tram stop revised scope   | 20-Apr-10    | 5474       | M              | 1           |                                     |            | 1           |                    |     | tie                   | 101,514  |        |         | 101,514 | 10,151    | 7,512  |                    |               | 119,176 |        |  |
| 76b                 | 15A |     | 5C                     | Edinburgh Gateway Project | Edinburgh Gateway Project  | 29-Jul-10    | t.5707     | I              | 1           | 1659                                |            |             | BSC                |     |                       |  |        |         |         |           |        |                    |               |         |        |  |
| 77                  |     | 112 | 5C                     | Design                    | DESIGN ONLY to Amend line of route design section 5C (Batch 5/22) Prior approval application Ref 0602211PA as tie letter INF CORR 055 dated 25th July 21 008   | 29-Aug-08    | T.055      | M              | 1           | 2847                                |            |             |                    |     |                       | 2,582  | 1,837  |         |         | 4,419     | 259    | 370                | 322           |         | 5,369  |  |
| 78                  |     |     | 7A                     | Design                    | Design Only for Alterations to design of Edinburgh Airport Tramstop and retaining wall design at Jubilee Road as tie letter INF CORR 072 dated 5th August 2008   | 02-Sep-08    | 261        | M              | 1           | 656                                 |            |             | BSC                |     | 18/12/09              | 41,034   |        |         | 41,034  | 4,103     | 3,037  |                    |               | 48,174  |        |  |
| 79                  |     |     | 1D                     | Design                    | Instruction from CEC to design an alternative layout for Haymarket Junction  | 03-Sep-08    | 452        | M              | 1           | 2128                                |            |             | BSC                |     | 06/01/09              | 44,056   |        |         | 44,056  | 4,406     | 3,260  |                    |               | 51,722  |        |  |
| 80                  |     |     | 7A                     | Design                    | Gogarburn Retaining Wall - CEC requesting change to the finish of the wall as per H-B letter ULE2413-33U/-LE1-UJ369 dated 3 September  | 03-Sep-08    | 467        | M              | 1           | 585                                 |            |             |                    |     | tie                   |  | 3,878  |         |         | 3,878     | 388    | 287                |               | 4,553   |        |  |
| 81                  |     |     | SW                     | Design                    | Environmentally Friendly Lighting - CEC have requested using 42 watt pt lamp rather than the 70 watt CDO (white light) as per PB letter ULE50130-SW/LET-01184 dated 3 September 2008   | 09-Sep-08    | 468        | M              | 1           | 1813                                |            |             |                    | BSC |                       | TBA  | 8,998  |         |         | 8,998     | 900    | 686                |               | 10,584  |        |  |
| 82                  |     |     | SW                     | Withdrawn                 | Contamination - fly tipping, Oil pollution, Contaminated material, Household waste, Giant Hogweed  | 28-Aug-08    | 208        | M              |             |                                     |            |             |                    |     |                       |  |        |         |         |           |        |                    |               |         |        |  |
| 83                  |     |     | 5A                     | Withdrawn                 | Traffic Management - Temporary Traffic Signals   | 21-Aug-08    | 320        | D              |             |                                     |            |             |                    |     |                       |  |        |         |         |           |        |                    |               |         |        |  |

BFB00003289\_0305

EDINBURGH TRAM NETWORK  
 INFRACO CHANGE REGISTER  
 CONFIDENTIAL

| GENERAL INFORMATION |     |      |                        |                                   |   |              |            |                |             |                                     |            |             |                    |     | FINANCIAL INFORMATION       |  |         |           |     |           |        |                    |               |           |  |
|---------------------|-----|------|------------------------|-----------------------------------|---|--------------|------------|----------------|-------------|-------------------------------------|------------|-------------|--------------------|-----|-----------------------------|--|---------|-----------|-----|-----------|--------|--------------------|---------------|-----------|--|
| References          |     |      | Location / Description |                                   |   | Notification |            | Type of Change |             | Principle of Change Status with tie |            |             | Actions / Comments |     |                             | Value of Estimate Submission / Change Order (£GBP) |         |           |     |           |        |                    |               |           |  |
| INTC                | TNC | ICO  | Section                | Activity Identifier               | Brief Description of Change   | Date         | Letter Ref | Type           | Change Type | Agreed                              | Not Agreed | No Decision | BSC                | Tie | By Date                     | SDS  | BBUK    | Siemens   | CAF | Sub-total | OH & P | Consortium Prelims | Other Prelims | Total     |  |
| 84                  | 5   | 18   | 7A                     | Design                            | TNC005-Burnside road Diversion - Fees for design (INF_CORR.005)   | 20-Jun-08    | T.006      | M              | -1          | 1                                   |            |             |                    |     |                             | 380  | 340     |           |     | 720       |        |                    |               | 720       |  |
| 85                  | 8   | 125  | 1A                     | W1 Lindsay Road Retaining Wall    | TNC008 - Lindsay Road Retaining Wall Cost Estimate (Now based on IFC Drawings as agreed with tie)   | 02-Jul-08    | T.021      | M              | -1          | 2958                                |            |             |                    |     |                             |  | 387,562 |           |     | 387,562   | incl   | 28,330             | 67,823        | 484,065   |  |
| 86                  | 10  |      | SW ON                  | Utilities                         | MUDFATO INFRACO transfer of Utilities Diversion Section 1A, 1B, 1C and 1D   | 06-Aug-08    | T.091      | M              | -1          | 91                                  |            |             | BSC                | tie | 10/05/09<br>19A<br>05/02/10 |  |         |           |     |           |        |                    |               |           |  |
| 87                  | 11  | 4    | 1B                     | Utilities                         | Duct Installation at Leith Walk   | 11-Jul-08    | T.030      | I              | -1          | 276                                 |            |             |                    |     |                             |  | 255     |           |     | 255       | 26     | 19                 | 45            | 344       |  |
| 87A                 |     | 13   | 1B                     | Utilities                         | Duct Installation at Leith Walk   | 01-Jan-00    |            | I              | -1          | 4017                                |            |             |                    |     |                             |  |         |           |     |           |        |                    |               |           |  |
| 88                  | 14  | 100  | SW                     | Utilities                         | Power Connections Phase 1a  | 06-Aug-08    | T.084      | M              | -1          | 6339                                |            |             | BSC                |     | 11/08/09                    |  |         | 1,808,374 |     | 1,808,374 |        |                    |               | 1,808,374 |  |
| 88.1                |     | 100a | SW                     | Utilities                         | Power Connections Phase 1a  | 01-Jan-00    |            | M              | -1          | 6339                                |            |             |                    |     |                             |  |         |           |     |           |        |                    |               |           |  |
| 88a                 |     | 137  | 6                      | Utilities                         | Power Supply Ducts - Section 6  | 19-Jan-10    | 3548       | M              | -1          | 4008                                |            |             |                    |     |                             |  | 10,646  |           |     | 10,646    | incl   | 788                | 1,863         | 13,297    |  |
| 88b                 |     | 160  | 7A                     | Utilities                         | Power Supply Ducts - Ingliston Park and Ride Tram Substation  | 19-Jan-10    | 4433       | M              | -1          | 5154                                |            |             |                    |     |                             |  | 1,849   |           |     | 1,849     | incl   | 137                | 324           | 2,310     |  |
| 89                  |     |      | 1B                     | Design                            | Balfour Street Crossing   | 30-Oct-08    | 364        | M              | -1          | 6240                                |            |             | BSC                |     |                             | 7,492  |         |           |     | 7,492     | 749    | 554                |               | 8,796     |  |
| 90                  |     |      | SW                     | Withdrawn                         | Change order request: SDS Development Workshop Attendance   | 31-Jul-08    | 324        |                |             |                                     |            |             |                    |     |                             |  |         |           |     |           |        |                    |               |           |  |
| 91                  |     | 98   | 5B                     | S27 Edinburgh Park Bridge         | Confirmation of Verbal Instruction Reference E1 NUJZ - Compensation Event Notice Edinburgh Park Structure (S27) Earthworks/Foundations          | 10-Sep-08    | 479        | I              | -1          | 2265                                |            |             |                    |     |                             |  | 41,945  |           |     | 41,945    | incl   | 3,104              | 7,340         | 52,389    |  |
| 92                  |     |      | 5A                     | Withdrawn                         | Design the Russell Road retaining wall to ensure that this avoids clashing with the existing sewer as per tie letter INF_CORR_051 dated 25/1/05 | 11-Sep-08    | T.051      | M              |             |                                     |            |             | BSC                |     | 18/03/10                    |  |         |           |     |           |        |                    |               |           |  |
| 93                  |     |      | 1A                     | Design                            | Lindsay Road, Ocean Drive, Ocean Terminal & Tower Place Planning Permission   | 24-Sep-08    | 526        | M              | -1          |                                     | 1          |             | BSC                |     | 13/02/09<br>06/08/10        | 40,137   | 440     |           |     | 40,577    | 4,098  | 3,009              |               | 47,684    |  |
| 94                  |     |      | 7A                     | Design                            | Hilton Hotel Full Planning  | 14-Jul-08    | 258        | D              | -1          |                                     | 1          |             | BSC                |     | 25/09/09<br>06/08/10        | 9,349  |         |           |     | 9,349     | 935    | 692                |               | 10,976    |  |
| 95                  |     |      | 6                      | Withdrawn                         | Additional Depot Prior Approvals  | 14-Jul-08    | 259        | D              |             |                                     |            |             |                    |     |                             |  |         |           |     |           |        |                    |               |           |  |
| 96                  |     |      | 1D                     | Highways                          | Shandwick Place DED preferential Treatments   | 24-Jul-08    | T.054      | M              | -4          |                                     | 1          |             |                    | tie |                             | 48,087   | 210,461 |           |     | 258,548   | 6,183  | 20,134             | 36,831        | 321,676   |  |
| 97                  |     | 180  | 5A                     | Design                            | Balgreen road Bridge Amending Technical Design  | 14-Jul-08    | 258        | D              | -1          | 1410                                |            |             |                    | tie |                             | 2,085  |         |           |     | 2,085     | 209    | 154                |               | 2,448     |  |
| 98                  |     |      | SW                     | Preliminaries                     | Notified Departure due to the issue of SDS Design programme V32   | 11-Sep-08    | 486        | M              | -1          |                                     |            | 1           | BSC                |     | 13/02/09<br>20/02/09        |  |         |           |     |           |        |                    |               |           |  |
| 99                  |     |      | SW                     | Preliminaries                     | Notified Departure due to the issue of SDS Design programme V33   | 11-Sep-08    | 486        | M              | -1          |                                     |            | 1           | BSC                |     | 13/02/09<br>20/02/09        |  |         |           |     |           |        |                    |               |           |  |
| 100                 |     |      | SW                     | Preliminaries                     | Notified Departure due to the issue of SDS Design programme V34   | 11-Sep-08    | 486        | M              | -1          |                                     |            | 1           | BSC                |     | 13/02/09<br>20/02/09        |  |         |           |     |           |        |                    |               |           |  |
| 101                 |     |      | SW                     | Preliminaries                     | Notified Departure due to the issue of SDS Design programme V35   | 11-Sep-08    | 486        | M              | -1          |                                     |            | 1           | BSC                |     | 13/02/09<br>20/02/09        |  |         |           |     |           |        |                    |               |           |  |
| 102                 |     |      | 5C                     | Withdrawn                         | Section 5C - Gogar Church and Gogar Castle  | 27-Aug-08    | 180        | D              |             |                                     |            |             |                    |     |                             |  |         |           |     |           |        |                    |               |           |  |
| 103                 |     |      | 5C                     | S28 R8 Underpass                  | IFC Drawing Changes - R8 Underpass  | 03-Jun-09    | 2788       | D              | -1          |                                     | 1          |             | BSC                | tie | 09/10/09<br>30/04/10        | 889,454  | 140,011 |           |     | 1,029,465 | incl   | 51,000             | 120,864       | 1,201,329 |  |
| 104                 |     | 161  | 5A                     | W8 Baird Drive Retaining Wall     | IFC Drawing Change Baird Drive RTW  | 15-Sep-08    | 497        | M              | -1          | 5146                                |            |             |                    |     |                             |  | 732,956 |           |     | 732,956   | incl   | 54,239             | 128,267       | 915,462   |  |
| 105                 |     | 138  | 5A                     | W9 Balgreen Road Retaining Wall   | IFC Drawing Change Balgreen Road Retaining Wall   | 15-Sep-08    | 497        | M              | -1          | 5641                                |            |             |                    |     |                             |  | 239,051 |           |     | 239,051   | incl   | 17,690             | 41,834        | 298,574   |  |
| 106                 |     |      | 5A                     | S21B Murrayfield Stadium RW       | IFC Drawing Change Murrayfield Stadium RTW  | 15-Sep-08    | 497        | M              | -1          |                                     | 1          |             | BSC                |     | 16/07/10<br>06/08/10        | 430,411  |         |           |     | 430,411   | 8,909  | 31,860             | 75,322        | 546,492   |  |
| 107                 |     |      | 5B                     | W11 Bankhead Drive Retaining Wall | IFC Drawing Change Bankhead RTW   | 15-Sep-08    | 493        | M              | -1          |                                     | 1          |             | BSC                |     | 16/07/10                    | 216,265  |         |           |     | 216,265   | incl   | 16,005             | 37,850        | 270,140   |  |

BFB00003289\_0306

**EDINBURGH TRAM NETWORK**  
**INFRACO CHANGE REGISTER**  
**CONFIDENTIAL**

| GENERAL INFORMATION |     |     |                        |                                    |  |              |            |                |             |                                     |            |             |                    |     | FINANCIAL INFORMATION  |  |           |           |     |           |        |                    |               |           |           |
|---------------------|-----|-----|------------------------|------------------------------------|--|--------------|------------|----------------|-------------|-------------------------------------|------------|-------------|--------------------|-----|------------------------|--|-----------|-----------|-----|-----------|--------|--------------------|---------------|-----------|-----------|
| References          |     |     | Location / Description |                                    |  | Notification |            | Type of Change |             | Principle of Change Status with tie |            |             | Actions / Comments |     |                        | Value of Estimate Submission / Change Order (£GBP) |           |           |     |           |        |                    |               |           |           |
| INTC                | INC | ICO | Section                | Activity Identifier                | Brief Description of Change  | Date         | Letter Ref | Type           | Change Type | Agreed                              | Not Agreed | No Decision | BSC                | Tie | By Date                | SDS  | BBUK      | Siemens   | CAF | Sub-total | OH & P | Consortium Prelims | Other Prelims | Total     |           |
| 108                 |     | 193 | 5C                     | W19 Gyle Tramstop Retaining Wall   | IFC Drawing Change Gyle Stop R11W  | 15-Sep-08    | 494        | M              | -1          | 6469                                |            |             | BSC                |     | 25/06/10<br>06/09/10   |  | 46,236    |           |     | 19,861    | incl   | 1,951              | 4,613         | 26,424    |           |
| 109                 |     |     | 5A                     | S21C Murrayfield Stadium Underpass | IFC Drawing Change Murrayfield Underpass   | 15-Sep-08    | 495        | M              | -1          | 2850                                |            |             | BSC                |     | 23/04/10               |  | 107,625   |           |     | 107,625   | incl   | 7,957              | 18,917        | 134,299   |           |
| 110                 |     |     | 5B                     | S26 South Gyle Access Bridge       | IFC Drawing Change South Gyle Access Bridge  | 15-Sep-08    | 496        | M              | -1          | 6647                                |            |             | BSC                |     | 28/05/10<br>06/09/10   |  | 379,890   |           |     | 379,890   | incl   | 28,112             | 66,481        | 474,483   |           |
| 111                 |     | 167 | 7A                     | S29 Gogarburn Underbridge          | IFC Drawing Change Gogarburn Bridge  | 19-Sep-08    | 503        | M              | -1          | 5371                                |            |             |                    |     |                        |  | 366,144   |           |     | 366,144   | incl   | 27,095             | 64,075        | 457,314   |           |
| 112                 |     | 112 | 2A                     | S19 Haymarket Viaduct              | IFC Drawing Change Haymarket Viaduct   | 19-Sep-08    | 504        | M              | -1          | 2847                                |            |             | BSC                |     |                        |  | 77,000    |           |     | 77,000    | incl   | 5,389              | 13,475        | 95,173    |           |
| 113                 |     | 168 | 2A                     | S20 Russell Road Bridge            | IFC Drawing Change Russell Road Bridge   | 19-Sep-08    | 505        | M              | -1          | 5340                                |            |             | BSC                |     | 30/07/10               |  | 48,178    |           |     | 48,178    | incl   | 3,565              | 8,431         | 60,174    |           |
| 113a                |     |     | 2A                     | S20 Russell Road Bridge            | Russell Road Bridge Temporary Works - Soil Nailing   | 19-Sep-08    | 505        | M              | -1          |                                     | 1          |             |                    |     |                        |  | 113,561   |           |     | 113,561   | 19,324 | 8,404              | 19,873        | 161,162   |           |
| 114                 |     |     | 5A                     | S21A Roseburn Street Viaduct       | IFC Drawing Change Roseburn Viaduct  | 19-Sep-08    | 506        | M              | -1          |                                     |            | 1           | BSC                |     | TBA                    |  |           |           |     |           |        |                    |               |           |           |
| 116                 |     | 162 | 5B                     | S23 Carricknowe Bridge             | IFC Drawing Change Carricknowe Bridge  | 19-Sep-08    | 507        | M              | -1          | 5144                                |            |             |                    | tie |                        |  | 110,701   |           |     | 110,701   |        | 8,192              | 19,373        | 138,266   |           |
| 116                 |     | 180 | 5A                     | S21E Water of Leith Bridge         | IFC Drawings Water of Leith Bridge   | 19-Sep-08    | 508        | M              | -1          | 5968                                |            |             |                    |     |                        |  | 138,500   |           |     | 138,500   | incl   | 10,249             | 24,237        | 172,986   |           |
| 117                 |     |     | 5A                     | Demolition                         | Extra Demolition required at Russell Road Retaining wall to Roseburn Street Units & Roseburn Garage.   | 18-Sep-08    | 497        | M              | -1          | 733                                 |            |             | BSC                |     | TBA                    |  |           |           |     |           |        |                    |               |           |           |
| 118                 |     | 96  | 1C                     | Design                             | IFC Drawing Change Cathedral Lane Sub Station  | 14-Oct-08    | 670        | M              | -1          | 2119                                |            |             |                    |     |                        |  | 1,145     |           |     | 1,145     | incl   | 85                 |               |           | 1,230     |
| 119                 |     |     | 1B                     | Withdrawn                          | IFC Drawing Change Leith Walk Sub Station  | 14-Oct-08    | 671        | M              |             |                                     |            |             |                    |     |                        |  |           |           |     |           |        |                    |               |           |           |
| 120                 |     |     | 1B                     | Preliminaries                      | IFC Drawings Demolition and reinforcing of existing building for Leith Walk Sub Station, sub station now positioned in area of building to be demolished.  | 14-Oct-08    | 672        | M              | -1          |                                     |            | 1           | BSC                |     | TBA                    |  |           |           |     |           |        |                    |               |           |           |
| 121                 | 16  | 103 | SW                     | Traffic Signals                    | Urban Traffic Controls (UTC) associated with delivery of the alignment   | 17-Sep-08    | T135       | M              | -1          | 2489                                |            |             | BSC                |     | 18/06/10               |  | 1,091,024 | 4,900,643 |     | 5,991,667 | incl   | 94,864             | 190,929       | 6,277,460 |           |
| 122                 |     |     | 1A                     | Preliminaries                      | Delay in receipt of CEC prior approval Sections 1A1 & 1A2  | 31-Jul-08    | 327        | M              | -1          |                                     |            | 1           | BSC                |     | 21/11/08<br>TBA        |  |           |           |     |           |        |                    |               |           |           |
| 123                 |     |     | 1A                     | Design                             | Forth Ports Agreement and Design Completion  | 16-Sep-08    | T154       | M              | -1          | 2447                                |            |             | BSC                |     | TBA<br>TBA<br>08/03/09 |  | 47,185    |           |     | 47,185    | 4,719  | 3,492              |               |           | 55,396    |
| 124                 |     |     | SW OFF                 | Preliminaries                      | Requirement for Principal Contractors License for Network Rail Related Works   | 10-Oct-08    | 659        | M              | -1          |                                     | 1          |             | BSC                |     | 02/10/09               |  | 842,771   |           |     | 842,771   | 84,277 | 62,395             | 147,466       |           | 1,136,899 |
| 125                 |     | 109 | 2A                     | S19 Haymarket Viaduct              | Unforeseen Ground Conditions at Haymarket Viaduct  | 10-Oct-08    | 660        | M              | -1          | 2659                                |            |             |                    |     |                        |  | 75,514    |           |     | 75,514    | incl   | 5,598              | 13,215        | 94,317    |           |
| 126                 |     |     | 1B                     | Withdrawn                          | Revised design for OLE poles in Section 1B   | 02-Oct-08    | 597        | D              |             |                                     |            |             |                    |     |                        |  |           |           |     |           |        |                    |               |           |           |
| 127                 |     |     | 1A                     | Withdrawn                          | Split Packages for Prior Approvals Ocean Terminal to Port of Leith   | 03-Oct-08    | 605        | D              |             |                                     |            |             |                    | tie |                        |  |           |           |     |           |        |                    |               |           |           |
| 128                 |     |     | 5B                     | Withdrawn                          | CEC request for change to roads design at Edinburgh Park Station Interchange   | 06-Oct-08    | 615        | M              |             |                                     |            |             |                    |     |                        |  |           |           |     |           |        |                    |               |           |           |
| 129                 |     |     | 1A                     | Preliminaries                      | CEC's Request for Extension of Time for Prior Approvals 1A1a, 1A1b and 1A1c  | 06-Oct-08    | 620        | M              | -1          |                                     |            | 1           | BSC                |     | 21/11/08               |  |           |           |     |           |        |                    |               |           |           |
| 130                 |     |     | 7A                     | Preliminaries                      | Delay to issue of IFC Drawings for Ingliston Park and Ride Tram Stop   | 06-Oct-08    | 623        | M              | -1          |                                     |            | 1           | BSC                |     | TBA                    |  |           |           |     |           |        |                    |               |           |           |
| 131                 |     |     | 1B                     | Withdrawn                          | Delay to Section 1B due to MUDFA not having completed its works  | 08-Oct-08    | 633        | M              | -1          |                                     |            |             | BSC                |     | 21/11/08<br>TBA        |  |           |           |     |           |        |                    |               |           |           |
| 132                 |     |     | 2A                     | Withdrawn                          | War Memorial Relocation (Pisum)  | 10-Oct-08    | 661        | M              |             |                                     |            |             |                    |     |                        |  |           |           |     |           |        |                    |               |           |           |
| 136                 |     |     | 1C                     | Withdrawn                          | Section 1C - Picardy Place - Modifications to designs, additional design work outside LOD and additional works to pavements in front of the Playhouse  | 08-Oct-08    | 639        | D              |             |                                     |            |             |                    |     |                        |  |           |           |     |           |        |                    |               |           |           |
| 137                 |     |     | 1A                     | Withdrawn                          | Sections 1A1 and 1A2 - CEC's proposed amendments to free build-outs adjacent 4 Constitution Street   | 08-Oct-08    | 642        | D              |             |                                     |            |             |                    |     |                        |  |           |           |     |           |        |                    |               |           |           |
| 138                 |     |     | 5A                     | Design                             | Design the piled foundations to the Water of Leith Bridge to avoid the existing 950 x 1200mm egg shaped combined sewer   | 05-Aug-08    | T067       | M              | -1          | 1606                                |            |             | BSC                |     | TBA                    |  | 27,316    |           |     | 27,316    | 2,732  | 2,021              |               |           | 32,069    |
| 139                 |     | 144 | 1B                     | Design                             | Revised location of OLE poles in Section 1A at the request of CEC.   | 09-Oct-08    | 645        | M              | -1          | 5193                                |            |             |                    | tie |                        |  | 3,897     |           |     | 3,897     | 390    | 288                |               |           | 4,575     |
| 140                 |     |     | 1A                     | Preliminaries                      | Delay to issue of IFC Drawings for Port of Leith Tram Stop Bernard Street Tram Stop Foot of the Walk Tram Stop 1A1 Roads, Street Lighting, Landscape and Drainage 1A2 Roads, Street Lighting, Landscape and Drainage | 09-Oct-08    | 647        | M              | -1          |                                     |            | 1           | BSC                | tie | TBA                    |  |           |           |     |           |        |                    |               |           |           |
| 141                 |     | 24  | 1D                     | Tramstops                          | West End Tramstop - revised requirements from CEC/ie.  | 31-Oct-08    | 935        | M              | -1          | 1220                                |            |             |                    |     |                        |  | 14,171    |           |     | 14,171    | 1,417  | 1,049              |               |           | 16,636    |

BFB00003289\_0307









Table with columns: References (INTC, ICO), Location / Description (Activity Identifier, Brief Description of Change), Notification (Date, Letter Ref), Type of Change (Type, Change Type), Principle of Change Status (Agreed, Not Agreed, No Decision), Actions / Comments (DSC, No Decision, Not Agreed, Agreed), Value of Estimate Submission / Change Order (EGBP) (SDS, BBUK, Siemens, CAF, Sub-total, OH & P, Consentium Projects, Other Profits, Total).



















EDINBURGH TRAM NETWORK  
INFRACO CHANGE REGISTER  
CONFIDENTIAL

| GENERAL INFORMATION |     |     |                        |                                    |  |              |            |                |             |                                     |            |             |                    |     | FINANCIAL INFORMATION |  |         |         |     |           |        |                    |               |         |        |  |
|---------------------|-----|-----|------------------------|------------------------------------|--|--------------|------------|----------------|-------------|-------------------------------------|------------|-------------|--------------------|-----|-----------------------|--|---------|---------|-----|-----------|--------|--------------------|---------------|---------|--------|--|
| References          |     |     | Location / Description |                                    |  | Notification |            | Type of Change |             | Principle of Change Status with tie |            |             | Actions / Comments |     |                       | Value of Estimate Submission / Change Order (£GBP) |         |         |     |           |        |                    |               |         |        |  |
| INTC                | INC | ICO | Section                | Activity Identifier                | Brief Description of Change  | Date         | Letter Ref | Type           | Change Type | Agreed                              | Not Agreed | No Decision | BSC                | tie | By Date               | SDS  | BBUK    | Siemens | CAF | Sub-total | OH & P | Consortium Prelims | Other Prelims | Total   |        |  |
| 647                 | 107 |     | SW ON                  | Traffic Management                 | Transfer of Principal Contractor CDM responsibility for removal of existing Traffic Management installations at West End Junction, St Andrew Square and Leith Walk | 06-Jul-10    | T5508      | I              | -1          | 5508                                |            |             | BSC                |     | 13/08/10              |  | 102,307 |         |     | 102,307   | 10,231 | 7,571              | 17,904        | 138,012 |        |  |
| 648                 |     |     | SW                     | Design                             | Promotion of Traffic Regulation Orders (TROs) by CEC   | 08-Jul-10    | 6189       | M              | -1          |                                     | 1          |             | BSC                |     | 30/07/10<br>13/08/10  |  |         |         |     |           |        |                    |               |         |        |  |
| 649                 | 105 |     | SW                     | Design                             | Tramstops - Changing brand Guidelines, IVMs and Validators   | 24-Jun-10    | 5360       | I              | -1          | 5422                                |            |             | BSC                |     | TBA                   | 54,167   |         |         |     | 54,167    | 5,417  | 4,068              |               |         | 63,652 |  |
| 650                 |     |     | SW ON                  | Design                             | Listed Building Consents - Dublin Street   | 12-Jul-10    | 6226       | M              | -1          | 1                                   |            |             |                    |     |                       |  |         |         |     |           |        |                    |               |         |        |  |
| 651                 |     |     | SW ON                  | Withdrawn                          | Festival embargos extended by 2 weeks  | 14-Jul-10    | 6247       |                |             |                                     |            |             |                    |     |                       |  |         |         |     |           |        |                    |               |         |        |  |
| 652                 | 103 |     | 7A                     | Contamination                      | Removal of Giant Hogweed in Plot 304   | 19-Jul-10    | T5176      | M              | -1          | 5176                                |            |             |                    | tie |                       |  | 14,366  |         |     |           | 14,366 | 1,436              | 1,062         | 2,512   | 19,366 |  |
| 653                 |     | 191 | 7A                     | Accommodation Works                | Badger sett removal (Dillie Hughes)  | 03-Sep-10    | 6625       | M              | -1          | 6500                                |            |             |                    |     |                       |  | 1,364   |         |     |           | 1,364  | 136                | 101           | 239     | 1,840  |  |
| 654                 | 109 | 210 | 7A                     | Design                             | Additional Tram stop at Gogar to be named 'Edinburgh Gateway   | 16-Jul-10    | T6624      | I              | -1          | 6605                                |            |             | BSC                |     | TBA                   | 1,880  |         |         |     | 1,880     | 188    | 139                |               |         | 2,207  |  |
| 655                 | 110 | 195 | 7A                     | Design                             | Relocate drainage from A8 at Gogar interchange   | 16-Jul-10    | T6624      | I              | -1          | 6509                                |            |             | BSC                |     | TBA                   | 23,101   |         |         |     | 23,101    | 2,310  | 1,709              |               |         | 27,121 |  |
| 656                 | 102 |     | 1A                     | Utilities                          | Remove existing sewer in Section 1A  | 17-Jul-10    | 6547       | I              | -1          | 5547                                |            |             | BSC                |     |                       |  |         |         |     |           |        |                    |               |         |        |  |
| 657                 |     |     | 1A                     | Design                             | Jane Street Radio Mast - Feasibility Study and Site Share Application  | 29-Jul-10    | #054180    | M              | -1          |                                     | 1          |             |                    | tie |                       |  |         | 8,726   |     |           | 8,726  | 873                | 646           | 1,527   | 11,770 |  |
| 658                 |     |     | 2A                     | Design                             | Section 2A - Phase 1A/1B Interface design  | 20-Jul-10    | 6303       | M              | -1          |                                     |            | 1           |                    | BSC |                       | 13/08/10   |         |         |     |           |        |                    |               |         |        |  |
| 659                 |     |     | 5A                     | S21A Roseburn Street Viaduct       | Roseburn Viaduct Structures - Additional requirements to value engineered design   | 28-Jul-10    | 6322       | M              | -1          |                                     |            | 1           |                    | BSC |                       | TBA  |         |         |     |           |        |                    |               |         |        |  |
| 660                 |     | 197 | 7A                     | Design                             | Topographical survey for Burnside Road   | 05-Aug-10    | 6373       | M              | -1          | 6448                                |            |             |                    |     |                       |  | 2,453   |         |     |           | 2,453  | 245                | 182           | 429     | 3,309  |  |
| 662                 |     |     | SW                     | Design                             | Lit signs requirements from CEC  | 08-Aug-10    | 6387       | M              | -1          |                                     |            | 1           |                    | BSC |                       | TBA  |         |         |     |           |        |                    |               |         |        |  |
| 663                 |     |     | 2A                     | Design                             | OLE Foundation 200+249 at Haymarket Yards  | 11-Aug-10    | 6412       | M              | -1          |                                     |            |             |                    | tie |                       |  |         |         |     |           |        |                    |               |         |        |  |
| 664                 |     |     | 1A                     | Utilities                          | Live HV cable discovered at structure W1 - Lindsay Road Retaining Wall LU  | 16-Aug-10    | 6430       | M              | -1          |                                     |            | 1           |                    | tie |                       |  |         |         |     |           |        |                    |               |         |        |  |
| 665                 |     |     | 1A                     | WT Lindsay Road Retaining Wall     | Lindsay Road retaining wall finish   | 19-Aug-10    | 6453       | M              | -1          |                                     |            | 1           |                    | BSC |                       |  |         |         |     |           |        |                    |               |         |        |  |
| 667                 |     |     | 5A                     | S21C Murrayfield Stadium Underpass | West Soil Nailing  | 20-Aug-10    | 6462       | M              | -1          |                                     | 2808       |             |                    | tie |                       |  | 34,975  |         |     |           | 34,975 | 2,369              | 5,364         |         | 42,899 |  |
| 668                 |     |     | 5B                     | Utilities                          | Busgate, Scottish Power HV Cable Clash with Drainage   | 23-Aug-10    | 6475       | M              | -1          |                                     |            | 1           |                    | tie |                       |  | 11,458  |         |     |           | 11,458 | 291                | 848           | 2,006   | 14,602 |  |
| 669                 |     |     | 5B                     | Drainage                           | Busgate Drainage Works - Ground Conditions   | 25-Aug-10    | 6476       | M              | -1          |                                     |            | 1           |                    |     |                       |  | 8,287   |         |     |           | 8,287  |                    | 612           | 1,460   | 10,360 |  |
| 670                 |     |     | 5B                     | Drainage                           | Excavation through rock within drainage run  | 02-Sep-10    | 6481       | M              | -1          |                                     |            | 1           |                    |     |                       |  |         |         |     |           |        |                    |               |         |        |  |
| 670a                |     |     | 5B                     | Drainage                           | Baggreen to Carnick Knowe - Ground Conditions - Rock   | 02-Sep-10    | 6601       | M              | -1          | 6691                                |            |             |                    | tie |                       |  | 6,369   |         |     |           | 6,369  | 639                | 473           | 1,116   | 8,619  |  |
| 671                 |     |     | 5C                     | Utilities                          | Slewing of existing ducts outwith the excavation line on the south side of the A8  | 27-Aug-10    | 6560       | M              | -1          |                                     |            | 1           |                    | tie |                       |  | 8,614   |         |     |           | 8,614  | 861                | 637           | 1,508   | 11,621 |  |
| 672                 |     |     | 2A                     | Utilities                          | Utilities within Infraco Works TO 2075 - 125mm watermain at Ch 200+109   | 27-Aug-10    | 6558       | M              | -1          |                                     |            | 1           |                    |     |                       |  |         |         |     |           |        |                    |               |         |        |  |
| 673                 |     |     | 2A                     | Earthworks                         | Ch 200+109 Haymarket Yards - Unforeseen Ground Conditions  | 16-Sep-10    | 6713       | M              | -1          |                                     |            | 1           |                    |     |                       |  | 9,382   |         |     |           | 9,382  | 37                 | 694           | 1,642   | 11,755 |  |
| 674                 |     |     | 5B                     | Tramstops                          | Edinburgh Park Station Tramstop BDDI to IFC  | 08-Sep-10    | 6568       | M              | -1          |                                     |            | 1           |                    |     |                       |  | 21,233  |         |     |           | 21,233 | 3,070              | 1,571         | 3,716   | 29,690 |  |
| 675                 |     |     | 5C                     | Tramstops                          | The Cycle Centre   | 08-Sep-10    | 6660       | M              | -1          |                                     |            | 1           |                    |     |                       |  | 40,860  |         |     |           | 40,860 | 936                | 3,009         | 7,102   | 51,867 |  |
| 676                 |     |     | 7A                     | Design                             | TAA for Nil Crossing 1 & 2   | 12-Oct-10    | 6954       | M              | -1          |                                     |            | 1           |                    |     |                       |  | 7,295   |         |     |           | 7,295  |                    | 540           | 730     | 8,564  |  |
| 677                 |     |     | 7A                     | S21 Gogarburn Underbridge          | Extension of the Maccaferri 'RENO' mattresses under Gogar Burn Bridge  | 08-Sep-10    | 6663       | M              | -1          |                                     |            | 1           |                    |     |                       |  | 17,631  |         |     |           | 17,631 |                    | 1,306         | 3,085   | 22,021 |  |
| 678                 |     |     | 7A                     | Earthworks                         | Installation of Gabion Wall at Ch /11975 - /11995  | 08-Sep-10    | 6662       | M              | -1          |                                     |            | 1           |                    |     |                       |  | 22,486  |         |     |           | 22,486 | 25                 | 1,883         | 3,952   | 28,089 |  |
| 679                 | 113 | 211 | 1A                     | Utilities                          | Lower Place Bridge Diversion   | 14-Sep-10    | 6680       | I              | -1          | 6705                                |            |             |                    |     | tie                   |  | 8,631   |         |     |           | 8,631  |                    | 639           | 1,510   | 10,780 |  |
| 681                 |     |     | 2A                     | Utilities                          | Trackslab and UHLL base existing Gas Man Clash at JUU+1 LU   | 15-Sep-10    | 6715       | M              | -1          |                                     |            | 1           |                    |     |                       |  |         |         |     |           |        |                    |               |         |        |  |
| 682                 |     |     | 7A                     | Design                             | Impact of Tram Infrastructure on flood risk in the Gogarburn   | 22-Sep-10    | 6752       | M              | -1          |                                     |            | 1           |                    |     |                       |  |         |         |     |           |        |                    |               |         |        |  |
| 683                 |     |     | 1A                     | Earthworks                         | Lindsay Road Retaining Wall 1A- Ground Conditions  | 28-Sep-10    | 6845       | M              | -1          |                                     |            | 1           |                    |     |                       |  |         |         |     |           |        |                    |               |         |        |  |
| 687                 |     |     | 5C                     | Design                             | Gogar Castle Access - Junction 206   | 04-Oct-10    | 6886       | M              | -1          |                                     |            | 1           |                    |     |                       |  |         |         |     |           |        |                    |               |         |        |  |
| 688                 |     |     | 1A                     | Design                             | Lighting Change for combines OLE Lighting on Ocean Drive   | 11-Oct-10    | 6943       | M              | -1          |                                     |            | 1           |                    |     |                       |  |         |         |     |           |        |                    |               |         |        |  |
| 689                 |     |     | 1A                     | Withdrawn                          | Existing Ducts within excavation for South East Approach Units   | 11-Oct-10    | 6940       |                |             |                                     |            |             |                    |     |                       |  |         |         |     |           |        |                    |               |         |        |  |
| 690                 | 115 |     | 1A                     | S17 Tower Place Bridge             | Archaeological findings  | 11-Oct-10    | 6939       | I              | -1          | 1                                   |            |             |                    |     |                       |  | 9,107   |         |     |           | 9,107  |                    | 674           | 1,594   | 11,375 |  |
| 691                 |     |     | SW OFF                 | Utilities                          | Electrification of Airdrie to Bathgate Rail Link Project   | 12-Oct-10    | 6953       | M              | -1          |                                     |            | 1           |                    |     |                       |  |         |         |     |           |        |                    |               |         |        |  |
| 692                 |     |     | 1A                     | WT Lindsay Road Retaining Wall     | Unable to commence fill operations   | 12-Oct-10    | 6956       | M              | -1          |                                     |            | 1           |                    |     |                       |  |         |         |     |           |        |                    |               |         |        |  |
| 693                 |     | 223 | 5C                     | Utilities                          | Ch 63000 to 630480, Utilities Protection Measures  | 14-Oct-10    | 7043       | M              | -1          |                                     |            | 1           |                    | tie |                       |  | 1,945   |         |     |           | 1,945  |                    | 144           | 340     | 2,430  |  |
| 694                 |     |     | 5A                     | S21E Water of Leith Bridge         | Utilities Protection Measures (Gas Main)   | 15-Oct-10    | 7065       | M              | -1          |                                     |            | 1           |                    | tie |                       |  | 20,148  |         |     |           | 20,148 | 2,015              | 1,491         | 3,526   | 27,180 |  |
| 695                 |     |     | 5A                     | Accommodation Works                | Scotrail Car Park Barrier and Security   | 15-Oct-10    | 7069       | M              | -1          |                                     |            | 1           |                    |     |                       |  |         |         |     |           |        |                    |               |         |        |  |
| 696                 |     |     | 2A                     | Utilities                          | Ch JUU+127; Utilities Clash  | 18-Oct-10    | 7093       | M              | -1          |                                     |            | 1           |                    |     |                       |  |         |         |     |           |        |                    |               |         |        |  |
| 697                 |     |     | 2A                     | Earthworks                         | Ch 200+215 Unforeseen Ground Conditions / Below Ground Obstructions  | 18-Oct-10    | 7094       | M              | -1          |                                     |            | 1           |                    |     |                       |  | 787     |         |     |           | 787    | 40                 | 58            | 138     | 1,022  |  |
| 698                 |     |     | SW ON                  | Soft Landscaping                   | I+U Drawing Changes - Soft Landscaping   | 10-Dec-10    | 7671       | M              | -1          |                                     |            | 1           |                    | tie |                       |  | 67,803  |         |     |           | 67,803 | 4,371              | 5,003         | 11,650  | 88,807 |  |
| 699                 |     |     | 2A                     | Soft Landscaping                   | I+U Drawing Changes - Soft Landscaping   | 05-Nov-10    | 7275       | M              | -1          |                                     |            | 1           |                    | tie |                       |  | 3,969   |         |     |           | 3,969  | 232                | 293           | 693     | 5,197  |  |
| 700                 |     |     | 5                      | Soft Landscaping                   | I+U Drawing Changes - Soft Landscaping   | 10-Dec-10    | 7667       | M              | -1          |                                     |            | 1           |                    | tie |                       |  | 41,341  |         |     |           | 41,341 | 3,894              | 3,099         | 7,295   | 55,329 |  |
| 701                 |     |     | SW                     | Siemens                            | Additional interlocking remould reset functions (Siemens)  | 25-Oct-10    | 054291     | M              | -1          |                                     |            | 1           |                    |     |                       |  |         | 36,303  |     |           |        |                    |               |         | 36,303 |  |
| 702                 | 116 |     | SW                     | Design                             | Pedestrian Guardrail - change in CEC Specification   | 27-Oct-10    | 7212       | I              | -1          |                                     |            | 1           |                    |     |                       |  | 2,105   |         |     |           | 2,105  |                    | 156           | 211     | 2,471  |  |
| 703                 |     |     | 1A                     | Design                             | Planning Permission Access to cruise liner area  | 12-Nov-10    | 7441       | M              | -1          |                                     |            | 1           |                    |     |                       |  |         |         |     |           |        |                    |               |         |        |  |
| 704                 |     |     | 2A                     | Drainage                           | Excavation of rock in sections 2A and 5A   | 12-Nov-10    | 7444       | M              | -1          |                                     |            | 1           |                    |     |                       |  |         |         |     |           | 55     | 5                  | 4             | 10      | 74     |  |

BFB00003289\_0320

EDINBURGH TRAM NETWORK  
 INFRACO CHANGE REGISTER  
 CONFIDENTIAL

| GENERAL INFORMATION |      |           |                        |                        |  |              |            |                |             |                                     |                |                 |                    |     | FINANCIAL INFORMATION |  |            |            |           |             |           |                    |               |             |
|---------------------|------|-----------|------------------------|------------------------|--|--------------|------------|----------------|-------------|-------------------------------------|----------------|-----------------|--------------------|-----|-----------------------|--|------------|------------|-----------|-------------|-----------|--------------------|---------------|-------------|
| References          |      |           | Location / Description |                        |  | Notification |            | Type of Change |             | Principle of Change Status with tie |                |                 | Actions / Comments |     |                       | Value of Estimate Submission / Change Order (£GBP) |            |            |           |             |           |                    |               |             |
| INTC                | INC  | ICO       | Section                | Activity Identifier    | Brief Description of Change  | Date         | Letter Ref | Type           | Change Type | Agreed                              | Not Agreed     | No Decision     | BSC                | Tie | By Date               | SDS  | BBUK       | Siemens    | CAF       | Sub-total   | OH & P    | Consortium Prelims | Other Prelims | Total       |
| 705                 |      |           | 2A                     | Withdrawn              | Unforeseen Ground Conditions Ch 200+125 Haymarket Yards                  | 12-Nov-10    | 7445       | M              | 1           |                                     |                |                 |                    |     |                       |  |            |            |           |             |           |                    |               |             |
| 706 pt 1            | 119A | 212       | 1A                     | S17 Tower Place Bridge | Open to two way traffic 19/11/10-10/01/11                                | 17-Nov-10    | T6725      | I              | 1           | 1                                   |                |                 |                    |     |                       |  | 52,500     |            |           | 52,500      |           | 3,885              | 9,188         | 65,573      |
| 706 pt 2            |      |           | 1A                     | S17 Tower Place Bridge | Tower Place Bridge Suspension of Works 19/11/10 to 10/01/11              | 20-Dec-10    | 7728       | I              | 1           |                                     | 1              |                 |                    |     |                       |  | 61,210     |            |           | 61,210      |           | 4,530              | 10,712        | 76,452      |
| 706 pt 3            | 119C |           | 1A                     | S17 Tower Place Bridge | Tower Place Bridge Diversion I NC 119C                                   | 17-Nov-10    | 16725      | I              | 1           | 1                                   |                |                 |                    |     |                       |  | 9,752      |            |           | 9,752       |           | 722                | 1,709         | 12,193      |
| 709                 |      |           | 2A                     | Utilities              | Existing Services in footpath Haymarket Terrace                          | 19-Nov-10    | 7496       | M              | 1           |                                     |                | 1               |                    |     |                       |  | 6,011      |            |           | 6,011       | 442       | 445                | 1,052         | 7,949       |
| 717                 |      |           | 1C                     | Siemens                | Updated non-contestable Costs and substations updated LV costs           | 08-Dec-10    | 054415     | M              | 1           |                                     |                | 1               |                    |     |                       |  |            | 2,739      |           | 2,739       | 465       | 219                |               | 3,423       |
| 718                 |      |           | 1A                     | S17 Tower Place Bridge | Amendment to South Cope Duct Bank  | 16-Dec-10    | 7710       | M              | 1           |                                     |                | 1               |                    |     |                       |  |            | 2,359      |           | 2,359       |           | 175                | 413           | 2,947       |
| 719                 |      |           | 1C                     | Site Clearance         | Site Clearance BUDD - IFC  | 14-Dec-10    | 7688       | M              | 1           |                                     |                | 1               |                    |     |                       |  |            | 250,115    |           | 250,115     |           | 19,248             | 45,518        | 324,881     |
| 720                 |      |           | 5B                     | Retaining Wall W500    | Section 5B Stenhouse Drive Retaining Wall and associated Utilities Works | 10-Dec-10    | 7660       | M              | 1           |                                     | 1              |                 |                    |     |                       |  |            |            |           |             |           |                    |               |             |
| 722                 |      | 213       | 5A                     | Ductwork               | TV Duct trench re-design   | 21-Dec-10    | 7741       | M              | 1           | 1                                   |                |                 |                    |     |                       | 4,990  |            |            |           | 4,990       | 499       | 969                |               | 5,958       |
| 723                 | 124  |           | 5A                     | Design                 | Incorporate Murrayfield Accommodation Works into "As-built" documents    | 12-Jan-11    | 7819       | I              | 1           | 1                                   |                |                 |                    |     |                       |  |            |            |           |             |           |                    |               |             |
| 724                 |      | 178       | 1C                     | Tram                   | Coupling of Tram on Princes Street                                       | 02-Feb-11    | 054468     |                |             | 1                                   |                |                 |                    |     |                       |  |            |            |           |             |           |                    |               |             |
| 725                 | 122  |           | 1A                     | Design                 | RW1A Footpath at toe of wall ADM to Ocean Drive Link Road                | 08-Feb-11    | 8008       |                |             | 1                                   |                |                 |                    |     |                       |  |            |            |           |             |           |                    |               |             |
| 726                 |      |           | 1D                     | Traffic Management     | HGV Turning constitution Street/Laurie Street                            | 10-Feb-11    | 8018       |                |             |                                     |                | 1               |                    |     |                       |  |            |            |           |             |           |                    |               |             |
| 860                 | 104  | 210 IC Us |                        | 23 blanks              |  |              |            |                |             | 344 Agreed                          | 135 Not Agreed | 199 No Decision | 339                | 120 |                       | 3,910,264  | 83,851,822 | 35,121,252 | 8,252,180 | 130,983,566 | 1,152,507 | 5,002,070          | 11,165,880    | 148,057,713 |

**Notes**

Type  
 D Notified Departure Deemed tie Change  
 M Notified Departure Mandatory tie Change  
 I Instruction

Change type  
 1 tie Change  
 2 Infraco Change  
 3 Small Works Change (see next tab)  
 4 Accommodation Works Change  
 5 Qualifying Change in Law  
 6 Network Expansion  
 7 Labour & Landfill Tax Fluctuations

Phong  
 1 Schedule of Rates  
 2 Unwed Rates  
 3 Fair Rates and Prices  
 4 Actual Cost

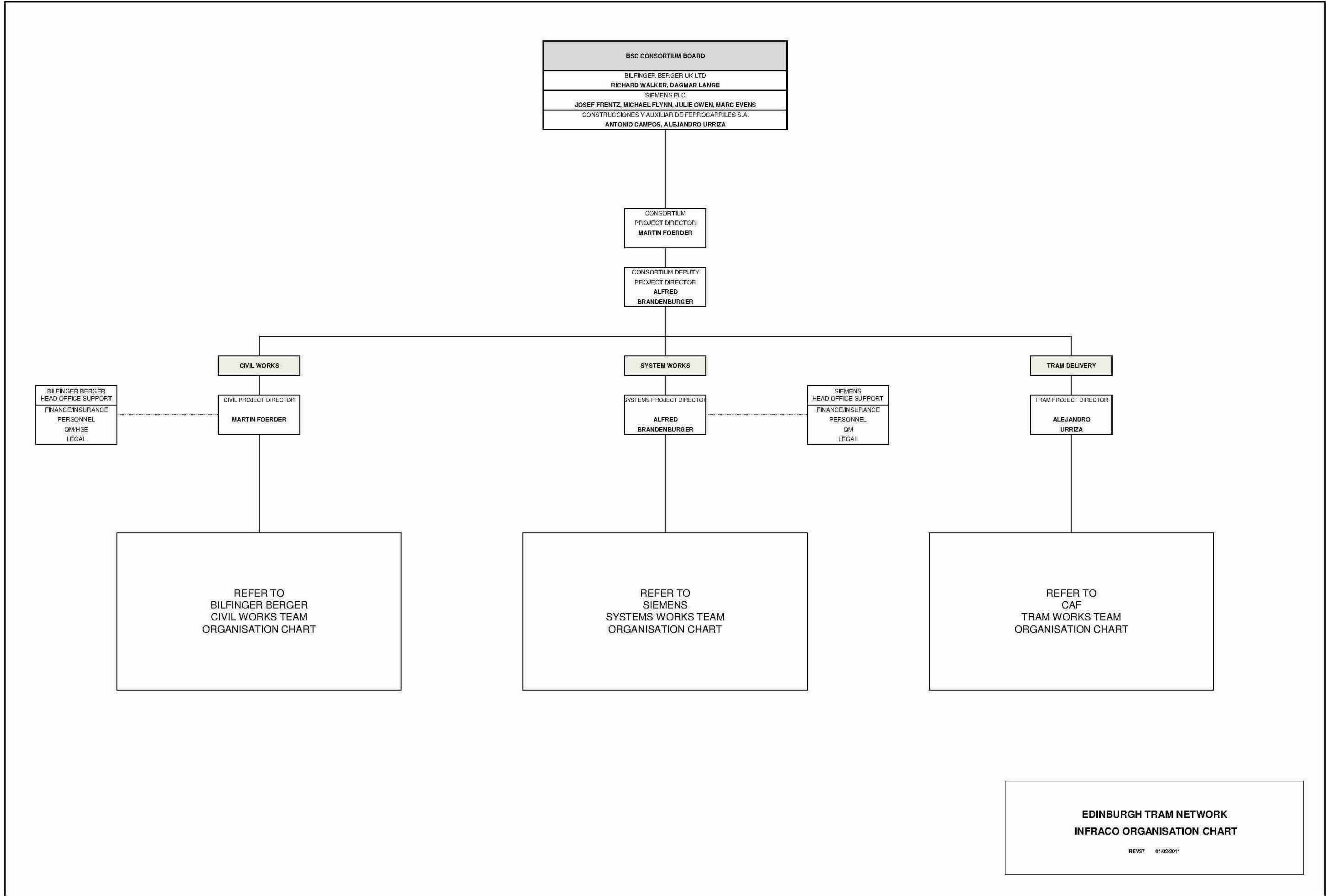
Priority  
 1 Urgent - Estimate required to allow work to commence  
 2 Other

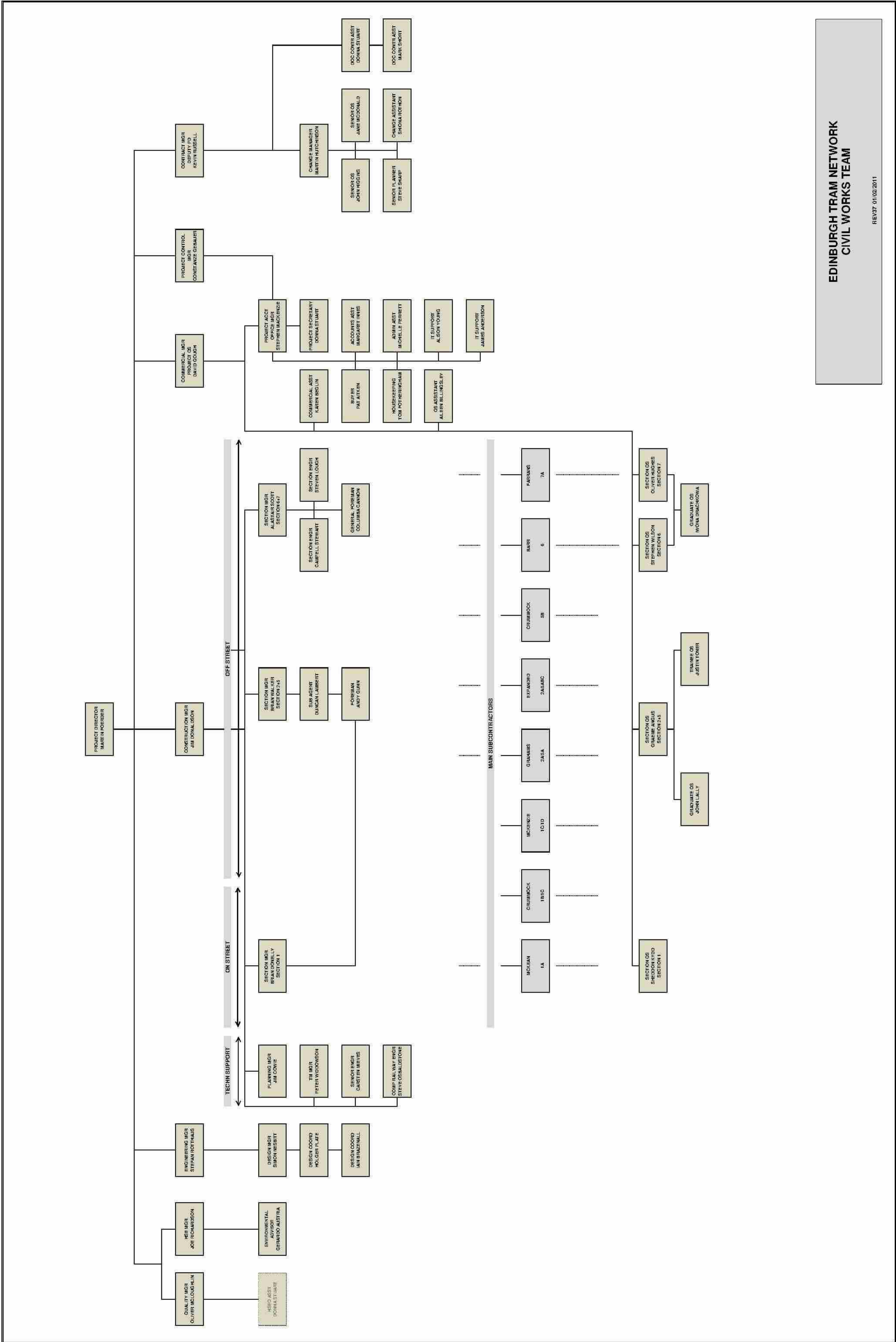
Allocation of Cost  
 D-P-S Defined Provisional Sum  
 U-P-S Undefined Provisional Sum  
 V-E Value Engineering  
 F-V-E Further Value Engineering  
 N/A None of the above

Withdrawn/Superseded/no cost  
 Delay Only  
 Change Order issued

BFB00003289\_0321

## **10.8 Organisation Charts**





EDINBURGH TRAM NETWORK  
 CIVIL WORKS TEAM  
 REV 07 01/02/2011

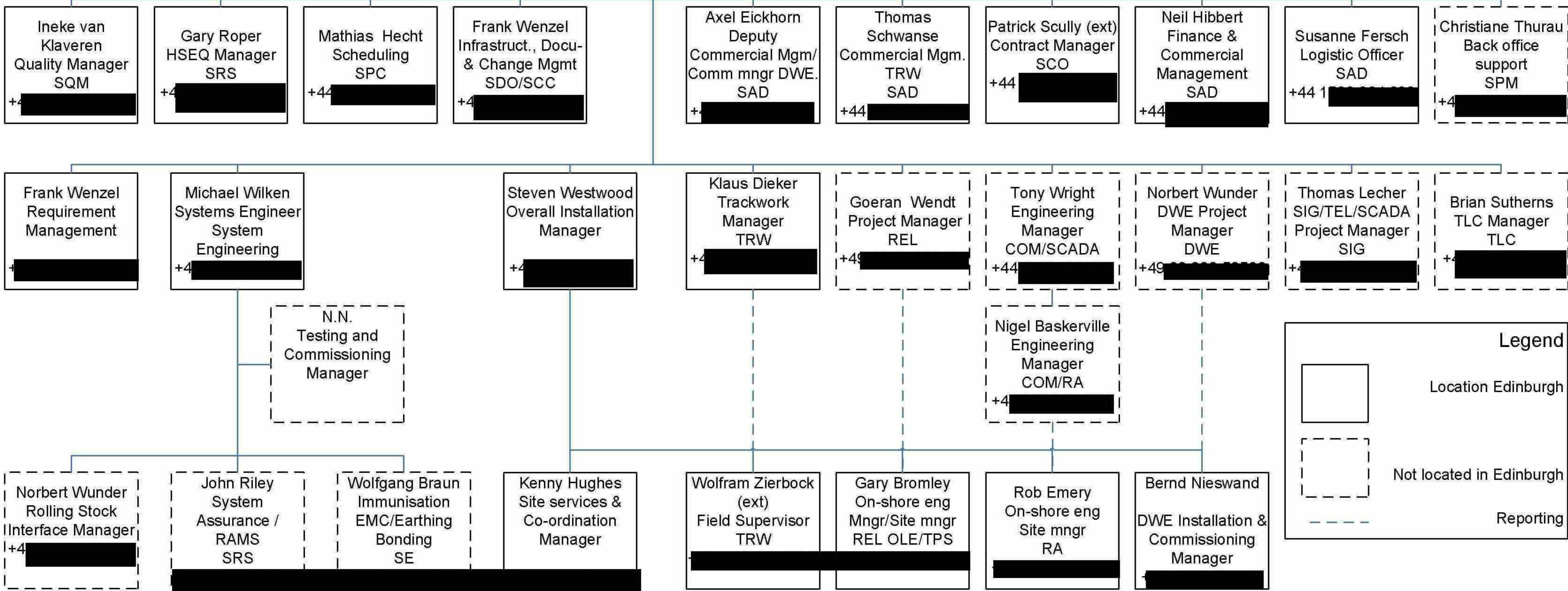
BSC Infraco Consortium Office  
 9 Lochside Avenue  
 Edinburgh  
 EH12 9DJ

ETN – Edinburgh Tram Network

Working Chart  
 Execution Phase  
 SPM: Siemens Project Management  
 ETN(SPM\$MG&ABB#050486  
 Rev N 01.01.2011

Fenella Watson  
 Team assistant  
 SPM  
 +44 [REDACTED]

Alfred Brandenburger  
 Project Director  
 Commercial Director  
 SPM  
 +44 131 452 2860



**Legend**

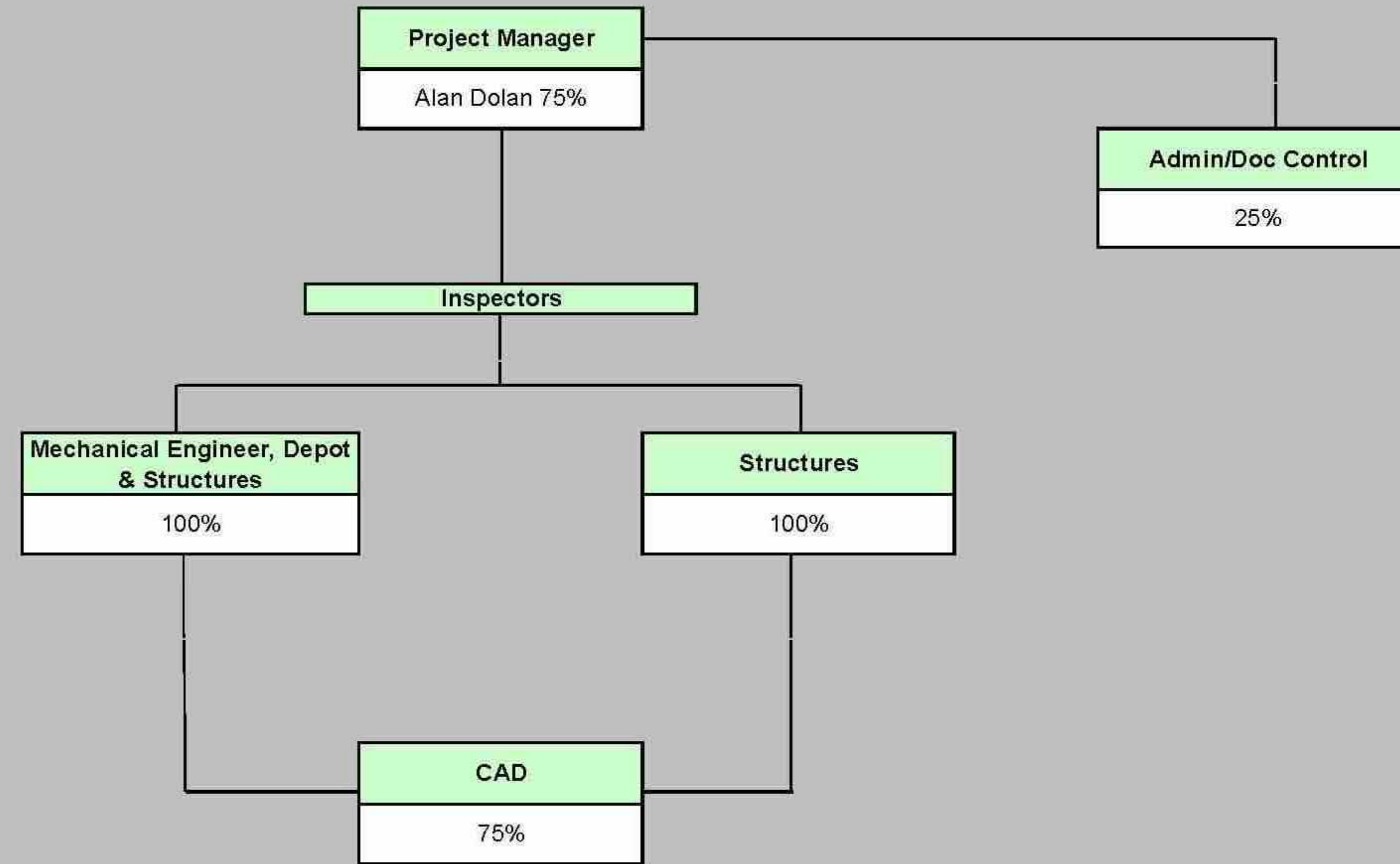
□ Location Edinburgh

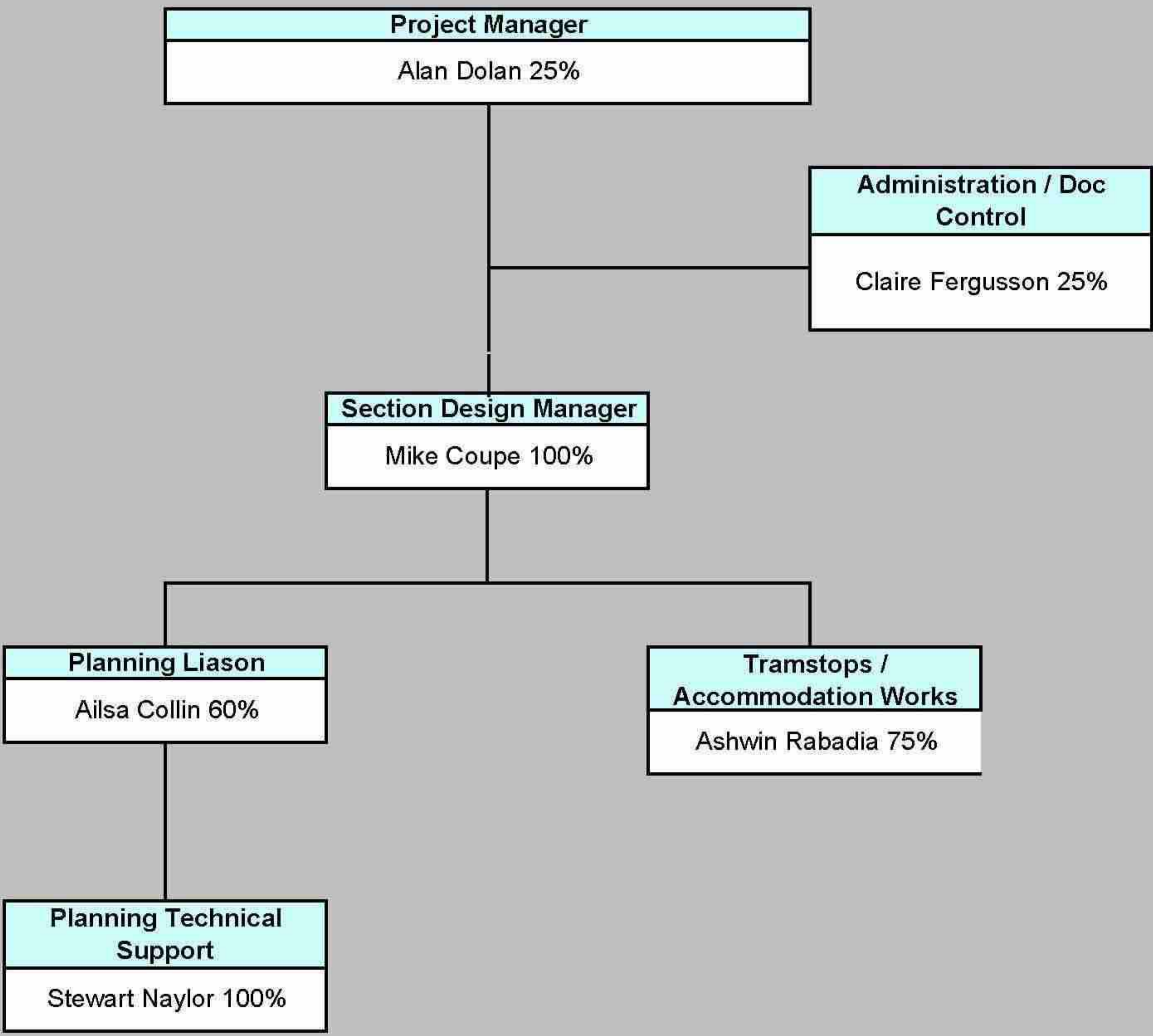
□ Not located in Edinburgh

--- Reporting

Approved: Brandenburger, Flynn  
 Checked: Owen, Frentz  
 Prepared: van Klaveren  
 File: ETN(SPM\$MG&ABB#050486\_N.vsd  
 Valid as of: 01.01.2011







## **10.9 Development Workshops**

## Misalignment Matrix

Version 13/01/2011

| No. | Reference          | Discipline                            | Item                                  | Description / Scope of Work   | Development Workshop              | Date (scheduled)   |                      | Development Workshop Report<br>current version issue date | INTC               | Estimate  |                    |   |  | DCO  |
|-----|--------------------|---------------------------------------|---------------------------------------|---|-----------------------------------|--------------------|----------------------|---|--------------------|-----------|--------------------|---|--|--|
|     |                    |                                       |                                       |   |                                   | BSC (SDS) Internal | confirmed date (tie) |   |                    | Requested | Validated          | Submitted to tie  | Authorised by tie  |  |
| 1   | Appendix 4         | Civils                                | Power                                 | Power distribution equipment foundation design  | Substations                       | 11/06/2009         | 05/08/2009           | 29/09/2009  | -477               | done      | done               | done. Separate estimate for cathedral line substation DCR0246 (submitted ref. 6345) | tie to authorise   | BSC's Interim DCO to SDS                                 |
| 2   | Appendix 4         | Civils                                | OLE                                   | OLE support foundation design   | OLE                               |                    |                      | 11/03/2009  | 375, 376           | done      | done               | done  | expended hours/costs to be audited by tie                            | 45, 46, 47, 48, 49, 50. DCO's do not include for DCR0229 |
| 4   | Appendix 4         | OLE                                   | OLE                                   | Detailed design - catenary  | OLE                               |                    |                      | 11/03/2009  |                    |           |                    |   |  |  |
| 5   | Appendix 4         | OLE                                   | OLE                                   | Detailed design - auto tensioned  | OLE                               |                    |                      | 11/03/2009  |                    |           |                    |   |  |  |
| 6   | Appendix 4         | OLE                                   | OLE                                   | Building Fixing Report including design/approvals (excluding detailed wiring design and detailed building fixings locations)                        | OLE                               |                    |                      | 11/03/2009  |                    |           |                    |   |  |  |
| 7   | Appendix 4         | OLE                                   | OLE                                   | Pantograph interface and performance characteristics  | OLE                               |                    |                      | 11/03/2009  |                    |           |                    |   |  |  |
| 8   | Appendix 4         | OLE                                   | OLE                                   | Typical cross sections and detailed cross sections  | OLE                               |                    |                      | 11/03/2009  |                    |           |                    |   |  |  |
| 9   | Appendix 4         | OLE                                   | OLE                                   | Proposal for poles, wiring arrangements and the tensioning equipment  | OLE                               |                    |                      | 11/03/2009  |                    |           |                    |   |  |  |
| 10  | Appendix 4         | OLE                                   | OLE                                   | Technical and performance specification for the OLE   | OLE                               |                    |                      | 11/03/2009  | 375, 376, 378, 379 | done      | done               | done. *Note: SDS Estimate DCR0229 (associated with INTC376) issued to tie ref. 6163 | expended hours/costs to be audited by tie                            | 45, 46, 47, 48, 49, 50. DCO's do not include for DCR0229 |
| 11  | Appendix 4         | OLE                                   | OLE                                   | Proposal for equipment type and method of supporting the equipment along the route, including the wall fixings                                      | OLE                               |                    |                      | 11/03/2009  |                    |           |                    |   |  |  |
| 12  | Appendix 4         | OLE                                   | OLE                                   | Detailed wiring layout design   | OLE                               |                    |                      | 11/03/2009  |                    |           |                    |   |  |  |
| 13  | Appendix 4         | OLE                                   | OLE                                   | Detailed survey work including building location, height and condition, ground condition and pole location surveys                                  | OLE                               |                    |                      | 11/03/2009  |                    |           |                    |   |  |  |
| 14  | Appendix 4         | OLE                                   | OLE                                   | Depot OLE Design  | OLE                               |                    |                      | 11/03/2009  |                    |           |                    |   |  |  |
| 15  | Appendix 4         | OLE                                   | OLE                                   | Specify forces & moments for masts  | OLE                               |                    |                      | 11/03/2009  |                    |           |                    |   |  |  |
| 16  | Appendix 4         | OLE                                   | OLE                                   | Mast Foundations  | OLE                               |                    |                      | 11/03/2009  |                    |           |                    |   |  |  |
| 17  | Appendix 4         | Power                                 | Power Supplies                        | Substation external and Distribution design and approvals   | Substations                       | 11/06/2009         | 05/08/2009           | 29/09/2009  | -477               | done      | done               | done. Separate estimate for cathedral line substation DCR0246 (submitted ref. 6345) | tie to authorise   | BSC's Interim DCO to SDS                                 |
| 18  | Appendix 4         | Power                                 | Power Supplies                        | Substation internal and Distribution design and approvals   | Substations                       | 11/06/2009         | 05/08/2009           | 29/09/2009  | -477               | done      | done               | done. Separate estimate for cathedral line substation DCR0246 (submitted ref. 6345) | tie to authorise   | BSC's Interim DCO to SDS                                 |
| 20  | Appendix 4         | Power                                 | Power Supplies                        | Design ducting from substation to specified mast  | Substations                       | 11/06/2009         | 05/08/2009           | 29/09/2009  | -477               | done      | done               | done. Separate estimate for cathedral line substation DCR0246 (submitted ref. 6345) | tie to authorise   | BSC's Interim DCO to SDS                                 |
| 21  | Appendix 4         | Power                                 | Power Supplies                        | Substation Civil/Building design  | Substations                       | 11/06/2009         | 05/08/2009           | 29/09/2009  | -477               | done      | done               | done. Separate estimate for cathedral line substation DCR0246 (submitted ref. 6345) | tie to authorise   | BSC's Interim DCO to SDS                                 |
| 22  | Appendix 4         | Power                                 | Earthing and Bonding                  | Outline schematic cabling routing, earthing and bonding arrangements  | Earthing + Bonding                | 10/06/2009         | 11/08/2009           | 14/10/2009  | 525                | done      | done               | done DCR00231 (submitted ref 7579) Siemens ref ETN(BSC)TIE&ABC #052118              | tie to authorise   | No Order Issued up to 11.02.11                           |
| 23  | Appendix 4         | Power                                 | Earthing and Bonding                  | Draft system earthing policy  | Earthing + Bonding                | 10/06/2009         | 11/08/2009           | 14/10/2009  | 525                | done      | done               | done DCR00231 (submitted ref 7579) Siemens ref ETN(BSC)TIE&ABC #052118              | tie to authorise   | No Order Issued up to 11.02.12                           |
| 24  | Appendix 4         | Power                                 | Earthing and Bonding                  | Typical detail sketches of earthing and bonding solutions as required   | Earthing + Bonding                | 10/06/2009         | 11/08/2009           | 14/10/2009  | 525                | done      | done               | done DCR00231 (submitted ref 7579) Siemens ref ETN(BSC)TIE&ABC #052118              | tie to authorise   | No Order Issued up to 11.02.13                           |
| 25  | Appendix 4         | Power                                 | Earthing and Bonding                  | Detail designs of earthing & bonding solutions as required  | Earthing + Bonding                | 10/06/2009         | 11/08/2009           | 14/10/2009  | 525                | done      | done               | done DCR00231 (submitted ref 7579) Siemens ref ETN(BSC)TIE&ABC #052118              | tie to authorise   | No Order Issued up to 11.02.14                           |
| 26  | Appendix 4         | Power                                 | Earthing and Bonding                  | Selection of specific earthing & bonding components   | Earthing + Bonding                | 10/06/2009         | 11/08/2009           | 14/10/2009  | 525                | done      | done               | done DCR00231 (submitted ref 7579) Siemens ref ETN(BSC)TIE&ABC #052118              | tie to authorise   | No Order Issued up to 11.02.15                           |
| 32  | Appendix 4         | Power                                 | Power Supplies                        | Review traction supply substation positions proposed  | Substations                       | 11/06/2009         | 05/08/2009           | 29/09/2009  | -477               | done      | done               | done. Separate estimate for cathedral line substation DCR0246 (submitted ref. 6345) | tie to authorise   | BSC's Interim DCO to SDS                                 |
| 33  | Appendix 4         | Power                                 | Power Supplies                        | Define traction supply substation positions and rating  | Substations                       | 11/06/2009         | 05/08/2009           | 29/09/2009  | -477               | done      | done               | done. Separate estimate for cathedral line substation DCR0246 (submitted ref. 6345) | tie to authorise   | BSC's Interim DCO to SDS                                 |
| 37  | Appendix 4         | Power                                 | Power Supplies                        | Traction supply substation schematic drawings   | Substations                       | 11/06/2009         | 05/08/2009           | 29/09/2009  | -477               | done      | done               | done. Separate estimate for cathedral line substation DCR0246 (submitted ref. 6345) | tie to authorise   | BSC's Interim DCO to SDS                                 |
| 38  | Appendix 4         | Power                                 | Power Supplies                        | Feed track bed electrical stray current control requirements to track discipline  | Earthing + Bonding                | 10/06/2009         | 11/08/2009           | 14/10/2009  | 525                | done      | validation ongoing | done  |  |  |
| 42  | Appendix 4         | Power                                 | Power Supplies                        | Draft traction supply substation equipment specification for traction supply substation procurement   | Substations                       | 11/06/2009         | 05/08/2009           | 29/09/2009  | -477               | done      | done               | done. Separate estimate for cathedral line substation DCR0246 (submitted ref. 6345) | tie to authorise   | BSC's Interim DCO to SDS                                 |
| 45  | Appendix 4         | Power                                 | Power Supplies                        | Specify to Scottish Power the high and low voltage supply requirements as appropriate for traction, Depot services and substation building services | Substations                       | 11/06/2009         | 05/08/2009           | 29/09/2009  | -477               | done      | done               | done. Separate estimate for cathedral line substation DCR0246 (submitted ref. 6345) | tie to authorise   | BSC's Interim DCO to SDS                                 |
| 48  | Appendix 4         | Power                                 | Power Supplies                        | Power distribution equipment foundation design  | Substations                       | 11/06/2009         | 05/08/2009           | 29/09/2009  | -477               | done      | done               | done. Separate estimate for cathedral line substation DCR0246 (submitted ref. 6345) | tie to authorise   | BSC's Interim DCO to SDS                                 |
| 49  | Appendix 4         | Power                                 | Power Supplies                        | Depot Substation and Distribution Design  | Substations                       | 11/06/2009         | 05/08/2009           | 29/09/2009  | -477               | done      | done               | done. Separate estimate for cathedral line substation DCR0246 (submitted ref. 6345) | tie to authorise   | BSC's Interim DCO to SDS                                 |
| 50  | Appendix 4         | Supervisory, Control & Communications | Supervisory, Control & Communications | Define loop location  | SCC                               |                    | 03/06/2009           | 24/09/2009 Draft  |                    |           |                    |   |  |  |
| 51  | Appendix 4         | Tram Stops                            | Passenger Info                        | Provision for Passenger Information System  | Tramstops                         | 09/06/2009         | 04/08/2009           | 29/09/2009  | -476               | done      | done               | done  | Not authorised yet. tie requested different breakdown. Issued by BSC | BSC's Interim DCO to SDS                                 |
| 52  | Appendix 4         | Tram Stops                            | Passenger Info                        | Component selection Passenger Information System  | Tramstops                         | 09/06/2009         | 04/08/2009           | 29/09/2009  | -476               | done      | done               | done  | Not authorised yet. tie requested different breakdown. Issued by BSC | BSC's Interim DCO to SDS                                 |
| 55  | Appendix 7, Part C | Drainage                              |                                       | Design to be completed to IFC status, all design consents and approvals obtained and BBS will construct IFC Design                                  | Drainage                          | 25/06/2009         | 25/08/2009           | 14/10/2009  | -488               | done      | done               | done  | authorised   | DCO109   |
| 56  | Appendix 7, Part C | Drainage                              |                                       | Requirements for maximising use of and connection to existing drainage network to be confirmed.   | Drainage                          | 25/06/2009         | 25/08/2009           | 14/10/2009  | -488               | done      | done               | done  | authorised   | DCO109   |
| 58  | Appendix 7, Part C | Earthworks                            |                                       | Requirements for excavation and filling below Earthworks Outline to be designed and specified and assessment of anticipated formation conditions    | Trackform                         |                    |                      | 11/03/2009  | -269               | done      | done               | done  | authorised   | 18   |
| 59  | Appendix 7, Part C | Earthworks                            |                                       |   | Trackform                         |                    |                      | 11/03/2009  | -269               | done      | done               | done  | authorised   | 18   |
| 60  | Appendix 7, Part C | Earthworks                            |                                       | Formation requirements to be confirmed.   | Trackform                         |                    |                      | 11/03/2009  | -269               | done      | done               | done  | authorised   | 18   |
| 65  | Appendix 7, Part C | Geometry, Horizontal Alignment        |                                       | Confirmation required that alignment is compatible with CAF Tram DKE and LOD.   | Vertical and Horizontal Alignment |                    |                      |   | -472 (partially )  |           |                    |   |  |  |
|     |                    |                                       |                                       |   |                                   |                    |                      |   |                    |           |                    |   |  |  |

| No. | Reference          | Discipline            | Item | Description / Scope of Work  | Development Workshop | Date (scheduled)   |                      | Workshop Report | INTC               | Estimate                   |           |  |  | DCO  |
|-----|--------------------|-----------------------|------|--|----------------------|--------------------|----------------------|-----------------|--------------------|----------------------------|-----------|--|--|--|
|     |                    |                       |      |  |                      | BSC (SDS) Internal | confirmed date (tie) |                 |                    | current version issue date | Requested | Validated                                  | Submitted to tie   |  |
| 67  | Appendix 7, Part C | OLE Foundations       |      | Design to be completed to IFC status, all design consents and approvals obtained and BBS will construct IFC Design   | OLE                  |                    |                      | 11/03/2009      | 375, 376, 378, 379 | done                       | done      | done                                       | expended hours/costs to be audited by tie                            | 45, 46, 47, 48, 49, 50. DCO's do not include for |
| 68  | Appendix 7, Part C | Roads                 |      | Design to be completed to IFC status, all design consents and approvals obtained and BBS will construct IFC Design   | Roads                |                    |                      | 27/02/2008      | 271                | done                       | done      | done                                       | authorised   | 19, 20   |
| 69  | Appendix 7, Part C | Roads                 |      | Subject to survey, pavement design to be developed and finalised to minimise work scope  | Roads                |                    |                      | 27/02/2008      | 271                | done                       | done      | done                                       | authorised   | 19, 20   |
| 70  | Appendix 7, Part C | Roads                 |      | Further pavement surveys and assessments are required  | Roads                |                    |                      | 27/02/2008      | 271                | done                       | done      | done                                       | authorised   | 19, 20   |
| 73  | Appendix 7, Part C | Sub-station Buildings |      | Design to be completed to IFC status, all design consents and approvals obtained and BBS will construct IFC Design   | Substations          | 11/06/2009         | 05/08/2009           | 29/09/2009      | 477                | done                       | done      | done. Separate estimate for cathedral line | authorised   | BSC's interim DCO to SDS                         |
| 75  | Appendix 7, Part C | Trackform             |      | Design to be completed to IFC status, all design consents and approvals obtained   | Trackform            |                    |                      | 11/03/2009      | 269                | done                       | done      | done                                       | authorised   | 18   |
| 76  | Appendix 7, Part C | Trackform             |      | Cross sections required to reflect BBS's selected track system, including minimum track construction depths (top of rail to formation) with corresponding formation condition requirements | Trackform            |                    |                      | 11/03/2009      | 269                | done                       | done      | done                                       | authorised   | 18   |
| 77  | Appendix 7, Part C | Trackform             |      | Cross sections required to reflect BBS's selected track system, including minimum track construction depths (top of rail to formation) with corresponding formation condition requirements | Trackform            |                    |                      | 11/03/2009      | 269                | done                       | done      | done                                       | authorised   | 18   |
| 78  | Appendix 7, Part C | Tramstops             |      | Design to be completed to IFC status, all design consents and approvals obtained and BBS will construct IFC Design   | Tramstops            | 09/06/2009         | 04/08/2009           | 29/09/2009      | 476                | done                       | done      | done                                       | Not authorised yet. tie requested different breakdown. Issued by BSC | 18   |
| 80  | Appendix 7, Part C | Vertical Alignment    |      | Revise alignment, where possible and where Programme permits for on street section to minimise Roads work-scope  | Roads                |                    |                      | 27/02/2009      | 271                | done                       | done      | done                                       | authorised   | 19, 20   |
| 81  | Appendix 7, Part C | Vertical Alignment    |      | Revise alignment, where possible and where Programme permits to minimise Roads work-scope  | Roads                |                    |                      | 27/02/2009      | 271                | done                       | done      | done                                       | authorised   | 19, 20   |

**Bilfinger Berger – Siemens – CAF Consortium**

**10.10 Issues and Concerns**

**Not Applicable**