





**Update Programme**

Updated for V67 Design Programme,  
and progress to 18 February 2011 .

**EDINBURGH TRAM NETWORK**



Activity ID	Activity Name	Start	Original Duration	Finish	Activity % Complete	Total Float	2010												2011				2012				2013				2014		
							Q4	Q1	Q2	Q3	Q4	Q1	Q2	Q3	Q4	Q1	Q2	Q3	Q4	Q1	Q2	Q3	Q4	Q1	Q2	Q3	Q4	Q1	Q2	Q3			
<b>Drainage &amp; Ducts</b>																																	
704	Drainage & Ducts	13-Oct-11	105	22-Mar-12	0%	576																											
1D-14G-H2-715	Investigate services / outfall positions / inlet-outlet positions / levels	13-Oct-11	2	17-Oct-11	0%	562																											
1D-14G-H2-696	Outfall Connections	17-Oct-11	2	19-Oct-11	0%	571																											
1D-14G-H2-677	Drainage to Discharge Points	19-Oct-11	5	26-Oct-11	0%	571																											
1D-14G-H2-688	Traction Ducts & Chambers	25-Oct-11	5	04-Nov-11	0%	535																											
1D-14G-H2-669	Comms Ducts & Chambers	25-Oct-11	3	28-Oct-11	0%	537																											
1D-14G-H2-890	Traffic Signal Ducts	26-Oct-11	4	04-Nov-11	0%	571																											
1D-14G-H2-681	Lighting Ducts	09-Mar-12	9	22-Mar-12	0%	528																											
<b>Inbound Track</b>																																	
958	Inbound Track	25-Oct-11	96	21-Mar-12	0%	585																											
1D-14G-H2-949	Installation of IMU Drains and Cable Ducting	25-Oct-11	2	27-Oct-11	0%	528																											
1D-14G-H2-1140	Carry out inspection and testing of Subgrade	27-Oct-11	1	28-Oct-11	0%	528																											
1D-14G-H2-981	Blinding Concrete	28-Oct-11	2	04-Nov-11	0%	528																											
1D-14G-H2-942	Place RC Improvement Slab (+ cure lag)	31-Oct-11	6	11-Nov-11	0%	528																											
1D-14G-H2-963	Access for Track Laying	15-Nov-11	0		0%	528																											
1D-14G-H2-974	Installation of Noise & Vibration Mat (if reqd)	15-Nov-11	0		0%	528																											
1D-14G-TRCK-70(3)	Set track (1x72m + 1x126)(sleepers/rail) + mob.	24-Jan-12	9	06-Feb-12	0%	528																											
1D-14G-H2-966	Welding & Grinding	25-Jan-12	6	02-Feb-12	0%	528																											
1D-14G-H2-947	Drainage/Rail Connections	25-Jan-12	6	02-Feb-12	0%	532																											
1D-14G-H2-968	Installation of IMU Boxes and Loops	25-Jan-12	6	02-Feb-12	0%	532																											
1D-14G-H2-959	Final Rail Alignment - Check and Approve	26-Jan-12	6	03-Feb-12	0%	528																											
1D-14G-H2-1150	230mm Concrete Supporting Layer (incl cure lag)	30-Jan-12	7	08-Feb-12	0%	528																											
<b>Pavement Construction over tracks</b>																																	
971	Pavement Construction over tracks	15-Feb-12	25	21-Mar-12	0%	585																											
1D-14G-H2-932	124mm Binder	15-Feb-12	2	17-Feb-12	0%	558																											
1D-14G-H2-953	35mm Wearing Course	17-Feb-12	1	20-Feb-12	0%	558																											
1D-14G-H2-964	15mm Surface Treatment	20-Mar-12	1	21-Mar-12	0%	537																											
<b>Carriageway Construction Westbound</b>																																	
1015	Carriageway Construction Westbound	08-Feb-12	36	29-Mar-12	0%	583																											
1D-14G-H2-986	Sub-base 220mm all carriageway areas	08-Feb-12	4	14-Feb-12	0%	528																											
1D-14G-H2-967	Strengthened Kerb (ULE90130-01-HRL-01135)	14-Feb-12	6	22-Feb-12	0%	528																											
1D-14G-H2-988	Kerbing K7 - Westbound/Islands/Crossings	22-Feb-12	12	09-Mar-12	0%	528																											
1D-14G-H2-1170	Signs / Street Furniture	24-Feb-12	5	02-Mar-12	0%	535																											
1D-14G-H2-979	Gullies	06-Mar-12	4	12-Mar-12	0%	548																											
1D-14G-H2-1001	Sub-base shape all carriageway areas	06-Mar-12	4	12-Mar-12	0%	548																											
1D-14G-H2-962	Traffic Signals	09-Mar-12	4	15-Mar-12	0%	531																											
1D-14G-H2-994	225mm Base	09-Mar-12	5	16-Mar-12	0%	530																											
1D-14G-H2-983	Footpath Works	16-Mar-12	4	22-Mar-12	0%	528																											
1D-14G-H2-1025	60mm Binder	16-Mar-12	1	19-Mar-12	0%	530																											
1D-14G-H2-996	35mm Wearing Course	19-Mar-12	1	20-Mar-12	0%	530																											
1D-14G-H2-977	Road Signs and Markings	22-Mar-12	5	29-Mar-12	0%	528																											
<b>Haymarket Station</b>																																	
969	Haymarket Station	18-Oct-11	94	12-Mar-12	0%	584																											
1D-14G-H2-1160	Excavation	18-Oct-11	4	24-Oct-11	0%	562																											

Date	Revision	Checked	Approved
11-Feb-11	ETN Updated Programme - Progress to 18 Feb 11	JAC	

█ Actual Work     █ Critical Remaining Work     █ % Complete  
█ Remaining Work     ◆ Milestone     ▾ Summary

BFB00003289\_0155





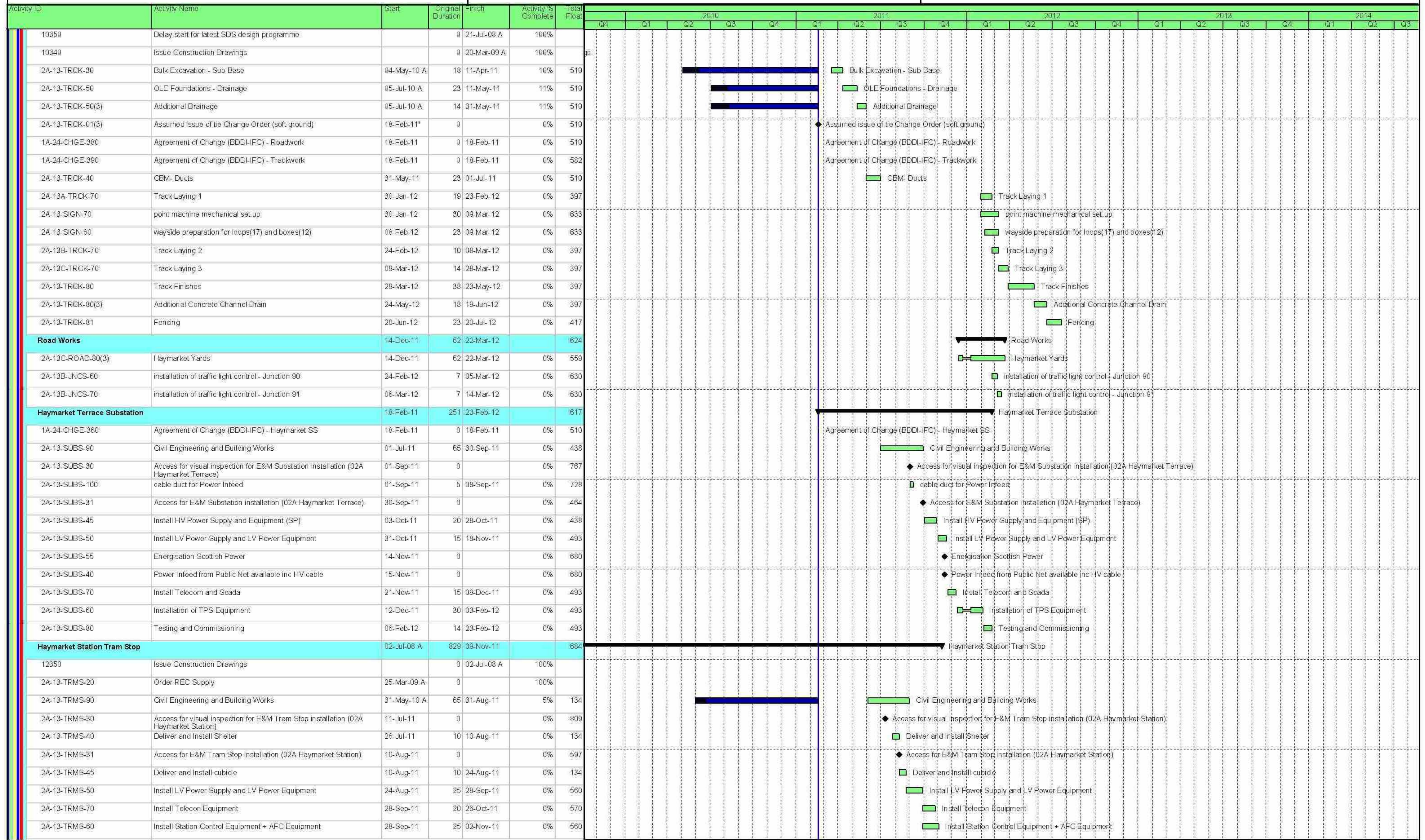




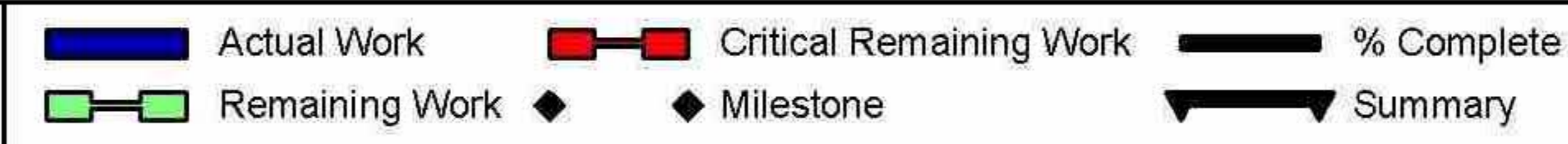






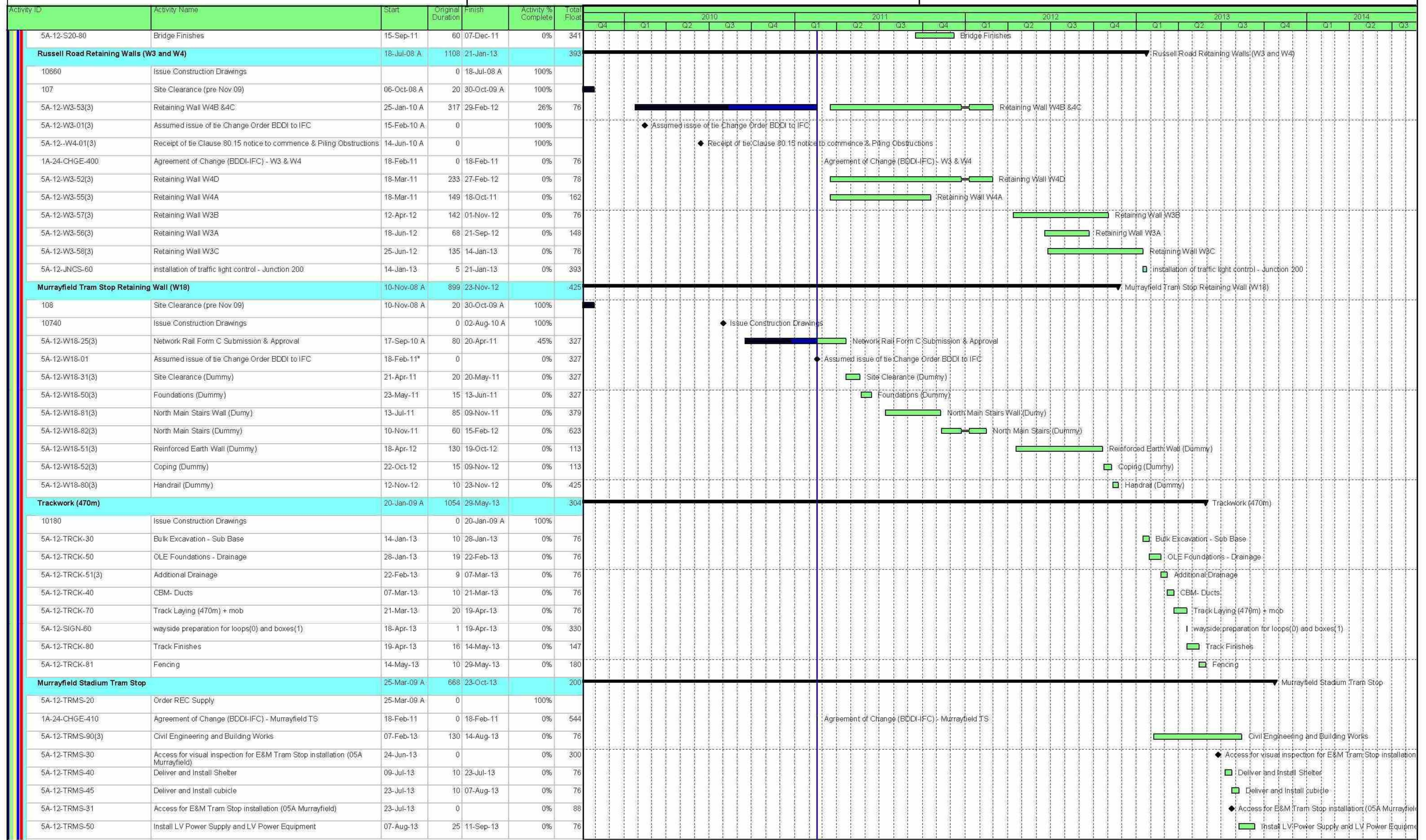


Date	Revision	Checked	Approved
11-Feb-11	ETN Updated Programme - Progress to 18 Feb 11	JAC	



BFB00003289\_0162





Date	Revision	Checked	Approved
11-Feb-11	ETN Updated Programme - Progress to 18 Feb 11	JAC	

█ Actual Work     █ Critical Remaining Work      % Complete  
█ Remaining Work     ◆ Milestone     ▶ Summary

BFB00003289\_0164







**Update Programme**

Updated for V67 Design Programme,  
and progress to 18 February 2011 .

**EDINBURGH TRAM NETWORK**



Activity ID	Activity Name	Start	Original Duration	Finish	Activity % Complete	Total Float	2010												2011				2012				2013				2014		
							Q4	Q1	Q2	Q3	Q4	Q1	Q2	Q3	Q4	Q1	Q2	Q3	Q4	Q1	Q2	Q3	Q4	Q1	Q2	Q3	Q4	Q1	Q2	Q3			
<b>Balgreen Road Tram Stop</b>							Balgreen Road Tram Stop																										
10790	Issue Construction Drawings	24-Jul-08 A	1204	13-Jun-13	100%	293																											
5A-11-TRMS-20	Order REC Supply	25-Mar-09 A	0	24-Jul-08 A	100%																												
5A-11-TRMS-90	Civil Engineering and Builders Work	09-Aug-12	65	07-Nov-12	0%	183																											
5A-11-TRMS-30	Access for visual inspection for E&M Tram Stop installation (05A Balgreen Road)	17-Sep-12	0		0%	499																											
5A-11-TRMS-40	Deliver and Install Shelter	04-Oct-12	10	17-Oct-12	0%	183																											
5A-11-TRMS-31	Access for E&M Tram Stop installation (05A Balgreen Road)	17-Oct-12	0		0%	308																											
5A-11-TRMS-45	Deliver and Install cubicle	12-Mar-13	10	25-Mar-13	0%	89																											
5A-11-TRMS-50	Install LV Power Supply and LV Power Equipment	26-Mar-13	25	30-Apr-13	0%	169																											
5A-11-TRMS-70	Install Telecom Equipment	01-May-13	20	30-May-13	0%	179																											
5A-11-TRMS-60	Install Station Control Equipment + AFC Equipment	01-May-13	25	06-Jun-13	0%	169																											
5A-11-TRMS-80	Package Test Tramstop	07-Jun-13	5	13-Jun-13	0%	169																											
<b>Jenners Depository Sub Station</b>							Jenners Depository Sub Station																										
1A-24-CHGE-460	Agreement of Change (BDDI-IFC) - Jenners Depository SS	18-Feb-11	0	18-Feb-11	0%	495																											
5A-11-SUBS-90	Civil Engineering and Building Works	12-May-11	65	15-Aug-11	0%	457																											
5A-11-SUBS-30	Access for visual inspection for E&M Substation installation (05A Jenners Depository)	15-Jul-11	0		0%	801																											
5B-10-SUBS-100	cable duct for Power Infeed	15-Jul-11	5	22-Jul-11	0%	761																											
5A-11-SUBS-31	Access for E&M Substation installation (05A Jenners Depository)	15-Aug-11	0		0%	483																											
5B-10-SUBS-45	Install HV Power Supply and Equipment (SP)	15-Aug-11	15	05-Sep-11	0%	457																											
5A-11-SUBS-50	Install LV Power Supply and LV Power Equipment	05-Sep-11	15	26-Sep-11	0%	532																											
5B-10-SUBS-55	Energisation Scottish Power	19-Sep-11	0		0%	719																											
5A-11-SUBS-40	Power Infeed from Public Net available inc HV cable	20-Sep-11	0		0%	719																											
5A-11-SUBS-70	Install Telecom and Scada	26-Sep-11	15	17-Oct-11	0%	532																											
5A-11-SUBS-60	Installation of TPS Equipment	17-Oct-11	30	28-Nov-11	0%	532																											
5A-11-SUBS-80	Testing and Commissioning	28-Nov-11	14	16-Dec-11	0%	532																											
<b>05B Balgreen Road (exc.) to Edinburgh Park Central (inc.)</b>							05B Balgreen Road (exc.) to Edinburgh Park Central (inc.)																										
118	05B Balgreen Road (exc.) to Edinburgh Park (inc.)	23-May-08 A	1820	20-May-13	54.78%	454																											
<b>MUDFA &amp; Utilities Completions</b>							MUDFA & Utilities Completions																										
5B-09-UTL-10(3)	Saughton Road North to Bankhead (South Gyle Access Sewer Diversion) - tie letter 6361 (06.10.10)	04-Nov-10 A	0	04-Nov-10 A	100%																												
<b>E &amp; M Installations</b>							E & M Installations																										
5B-10-ELEC-30	Access for visual inspection to cable pits for cable laying BAL - SGT	15-Sep-11	0		0%	730																											
5B-10-OHLE-30	Access for visual inspection for E&M wayside installation BAL - SGT	15-Sep-11	0		0%	730																											
5B-09/10-OHLE-50	Installation of poles and building fixings -14 (52 0535 - 52 2032)	17-Oct-11	10	28-Oct-11	0%	672																											
5B-10-ELEC-31	Access to cable pits for cable laying BAL - SGT	17-Oct-11	0		0%	572																											
5B-10-OHLE-31	Access for E&M wayside installation BAL - SGT	17-Oct-11	0		0%	545																											
5B-07-OHLE-30	Access for visual inspection for E&M wayside installation EPS - EDF	24-Oct-11	0		0%	696																											
5B-07-ELEC-30	Access for visual inspection to cable pits for cable laying EPS - EDP	24-Oct-11	0		0%	696																											
5B-09/10-OHLE-60	Overhead Catenary Line -14 (52 0535 - 52 2032)	31-Oct-11	26	05-Dec-11	0%	672																											
5B-08-OHLE-30	Access for visual inspection for E&M wayside installation BNK - EPS	08-Nov-11	0		0%	729																											
5B-08-ELEC-30	Access for visual inspection to cable pits for cable laying BNK - EPS	08-Nov-11	0		0%	729																											
5B-07-ELEC-60	Install Electrical Cables EPS - EDP	22-Nov-11	7	01-Dec-11	0%	668																											
5B-07-OHLE-31	Access for E&M wayside installation EPS - EDF	22-Nov-11	0		0%	642																											
5B-07-ELEC-31	Access to cable pits for cable laying EPS - EDP	22-Nov-11	0		0%	660																											
5B-07-SGNW-60	Install Signalling Wayside Equipment EPS - EDP	22-Nov-11	7	01-Dec-11	0%	660																											
5B-08-SIGN-40	Installation of SIG-interlocking cubicle EPS	08-Dec-11	15	28-Dec-11	0%	726																											

Date	Revision	Checked	Approved
11-Feb-11	ETN Updated Programme - Progress to 18 Feb 11	JAC	

█ Actual Work     
 █ Critical Remaining Work     
  % Complete  
█ Remaining Work     
 ◆ Milestone     
  Summary

BFB00003289\_0168







