

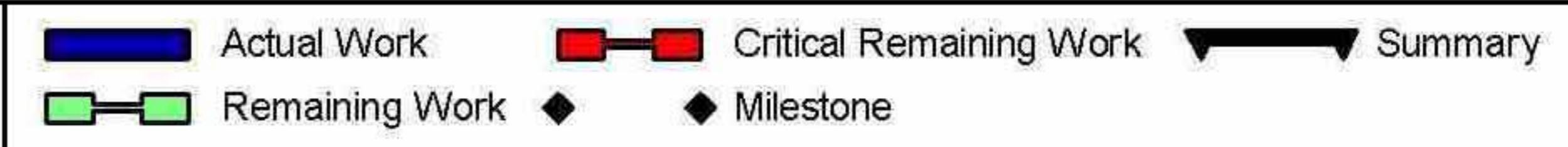
Activity ID	Activity Name	Original Duration	Start	Finish	Total Float	2008												2009												2010												2011												2012												2013												014
						INDJFMA				JJJASON				NDJH A				JJJAS				NDJH A				JJJAS				NDJH A				JJJAS				NDJH A				JJJAS				NDJH A				JJJAS				NDJH A																								
1A-24C-6-1350	Capping layer (600mm)	3	14-Jul-10	16-Jul-10	281																																																																									
1A-24C-6-1360	Drainage and Outfalls	11	15-Jul-10	29-Jul-10	288																																																																									
1A-24C-6-1380	Ducts and Chambers	6	22-Jul-10	29-Jul-10	288																																																																									
1A-24C-6-1370	Manholes & Catchpits (5nos)	11	15-Jul-10	29-Jul-10	288																																																																									
1A-24C-6-1390	Kerbing	6	31-Aug-10	07-Sep-10	250																																																																									
1A-24C-6-1400	Footpath Works	18	02-Sep-10	27-Sep-10	265																																																																									
SURFACING		4	15-Sep-10	20-Sep-10	245	▼ 20-Sep-10, SURFACING																																																																								
1A-24C-6-1410	220mm Sub-base	1	15-Sep-10	15-Sep-10	245																																																																									
1A-24C-6-1420	225mm Base	1	16-Sep-10	16-Sep-10	245																																																																									
1A-24C-6-1430	60mm Binder Course	1	17-Sep-10	17-Sep-10	245																																																																									
1A-24C-6-1440	35mm Surface Course - Main Carriageway and Bo	1	20-Sep-10	20-Sep-10	245																																																																									
INBOUND		16	21-Sep-10	12-Oct-10	252	▼ 12-Oct-10, INBOUND																																																																								
1A-24C-6-1450	Plane Main Carriageway & Footway	2	21-Sep-10	22-Sep-10	245																																																																									
1A-24C-6-1460	Plane/break/excavate to Formation	6	23-Sep-10	30-Sep-10	245																																																																									
1A-24C-6-1470	Capping layer (600mm)	6	24-Sep-10	01-Oct-10	245																																																																									
1A-24C-6-1480	Drainage and Outfalls	6	27-Sep-10	04-Oct-10	254																																																																									
1A-24C-6-1490	Ducts and Chambers	6	27-Sep-10	04-Oct-10	254																																																																									
1A-24C-6-1500	Kerbing	4	01-Oct-10	06-Oct-10	245																																																																									
1A-24C-6-1510	Footpath Works	4	05-Oct-10	08-Oct-10	254																																																																									
SURFACING		4	07-Oct-10	12-Oct-10	245	▼ 12-Oct-10, SURFACING																																																																								
1A-24C-6-1520	220mm Sub-base	1	07-Oct-10	07-Oct-10	245																																																																									
1A-24C-6-1530	225mm Base	1	08-Oct-10	08-Oct-10	245																																																																									
1A-24C-6-1540	60mm Binder Course	1	11-Oct-10	11-Oct-10	245																																																																									
1A-24C-6-1550	35mm Surface Course - Main Carriageway and Bo	1	12-Oct-10	12-Oct-10	245																																																																									
ROAD FINISHING		17	01-Oct-10	25-Oct-10	245	▼ 25-Oct-10, ROAD FINISHING																																																																								
1A-24C-6-1560	Parapets, Guard rails	0	01-Oct-10	01-Oct-10	257																																																																									
1A-24C-6-1570	Landscaping	4	06-Oct-10	11-Oct-10	254																																																																									
1A-24C-6-1580	Installation of traffic light control - Junction 6B (1)	6	13-Oct-10	20-Oct-10	245																																																																									
1A-24C-6-1590	Grind Rail Joint and Sealing Compound	1	21-Oct-10	21-Oct-10	245																																																																									
1A-24C-6-1600	Road Signs and Markings	1	22-Oct-10	22-Oct-10	245																																																																									
1A-24C-6-1610	Remove temporary traffic management	1	25-Oct-10	25-Oct-10	245																																																																									
COMMISSIONING AND TESTING		5	26-Oct-10	02-Nov-10	756	▼ 02-Nov-10, COMMISSIONING AND TESTING																																																																								
1A-24C-6-TEST-100	Handover / Acceptance of Roadworks and Trackwc	5	26-Oct-10	01-Nov-10	245																																																																									
1A-24C-6-TEST-110	Start remaining E&M works along track	0	02-Nov-10		756	◆ Start remaining E&M works along track																																																																								
LEITH SANDS SUB STATION(3)		301	12-Jul-10	27-Sep-11	535	▼ 27-Sep-11, LEITH SANDS SUB STATION(3)																																																																								
1A-SUBS-30	Access for visual inspection for E&M Substation inst.	0	10-Sep-10		788	◆ Access for visual inspection for E&M Substation installation (01A Leith Sands) (tbs)																																																																								
1A-SUBS-100	cable duct for Power Infeed (to be scheduled)	5	10-Sep-10	17-Sep-10	788																																																																									
1A-SUBS-120	LEITH SANDS SUB STATION - CIVIL WORKS CC	0		11-Oct-10	771	◆ LEITH SANDS SUB STATION- CIVIL WORKS COMPLETE																																																																								
1A-SUBS-90	Civil Engineering and Building Works	65	12-Jul-10	11-Oct-10	534																																																																									
1A-SUBS-31	Access for E&M Substation installation (01A Leith S	0	12-Oct-10		534	◆ Access for E&M Substation installation (01A Leith Sands) (tbs)																																																																								
1A-SUBS-45	Install HV Power Supply and Equipment (SP) (tbs)	20	16-May-11	13-Jun-11	393																																																																									
1A-SUBS-55	Energisation Scottish Power (tbs)	0		27-Jun-11	535	◆ Energisation Scottish Power (tbs)																																																																								
1A-SUBS-40	Power Infeed from Public Net available inc HV cable	0	29-Jun-11		535	◆ Power Infeed from Public Net available inc HV cable (tbs)																																																																								
1A-SUBS-50	Install LV Power Supply and LV Power Equipment (15	15-Jun-11	05-Jul-11	535																																																																									

Date	Revision	Checked	Approved
06-Jul-10	ETN Programme Revision 3A Progress to 9 July 2010	SCS	BSC

■ Actual Work ■ Critical Remaining Work Summary
■ Remaining Work ◆ Milestone

Activity ID	Activity Name	Original Duration	Start	Finish	Total Float	2008												2009												2010												2011												2012												2013												014
						JAN				FEB				MAR				APR				MAY				JUN				JUL				AUG				SEP				OCT				NOV				DEC																												
Design (based on SDS V55 Programme)						14-Jun-10 A, Design (based on SDS V55 Programme)																																																																								
12030	Issue Construction Drawings (Victoria Dock Access	0	11-Nov-08 A	11-Nov-08 A		◆ Issue Construction Drawings (Victoria Dock Access Bridge)																																																																								
12040	Issue Construction Drawings (Tower Place Bridge)	0	10-Dec-08 A	10-Dec-08 A		◆ Issue Construction Drawings (Tower Place Bridge)																																																																								
1A-3-DSG-TRCK-120	Issue Bridge Specific Trackform Details S17	0	07-May-10 A	07-May-10 A		◆ Issue Bridge Specific Trackform Details S17																																																																								
1A-3-DSG-TRCK-110	Issue Bridge Specific Trackform Details S16	0	07-May-10 A	07-May-10 A		◆ Issue Bridge Specific Trackform Details S16																																																																								
1A-3-DSG-ROAD-100	IFC Drawings Roadworks (Ocean Terminal to Port	0	14-Jun-10 A	14-Jun-10 A		◆ IFC Drawings Roadworks (Ocean Terminal to Port of Leith)																																																																								
MUDFA & UTILITIES						01-Oct-10, MUDFA & UTILITIES																																																																								
1A-MUDFA-01	MUDFA & Utilities work completion (Ch. 1400 - 160	0	10-Jun-09 A	10-Jun-09 A		◆ MUDFA & Utilities work completion (Ch. 1400 - 1600) - tbc																																																																								
1A-MUDFA-03B	MUDFA & Utilities work completion - Victoria Bridge	0	09-Jul-10*	09-Jul-10*	431	◆ MUDFA & Utilities work completion - Victoria Bridge (Ch. 1200 - 1400) - tbc																																																																								
1A-MUDFA-01A	MUDFA & Utilities work completion (Ch. 1800 - 190	0	03-Aug-10*	03-Aug-10*	284	◆ MUDFA & Utilities work completion (Ch. 1800 - 1900) - tbc																																																																								
1A-MUDFA-02	MUDFA & Utilities work completion (Ch. 1600 - 190	0	03-Aug-10*	03-Aug-10*	320	◆ MUDFA & Utilities work completion (Ch. 1600 - 1900) - tbc																																																																								
1A-MUDFA-03A	MUDFA & Utilities work completion (Ch. 1100 - 120	0	01-Oct-10*	01-Oct-10*	304	◆ MUDFA & Utilities work completion (Ch. 1100 - 1200) - tbc																																																																								
SECTION WIDE (OFF TTM)						20-Oct-10, SECTION WIDE (OFF TTM)																																																																								
Ocean Terminal Bypass Road (By others?)						20-Oct-10, Ocean Terminal Bypass Road (By others?)																																																																								
1A-BYPASS-100	COMMENCE ROAD WORKS OCEAN TERMINAL	0	09-Jul-10*	09-Jul-10*	764	◆ COMMENCE ROAD WORKS OCEAN TERMINAL BYPASS ROAD																																																																								
1A-BYPASS-110	TTM+Temp. fencing OCEAN TERMINAL BYPASS	1	09-Jul-10	09-Jul-10	764																																																																									
1A-BYPASS-120	Site clearance	2	12-Jul-10	13-Jul-10	764																																																																									
1A-BYPASS-130	Investigate services / outfall positions / inlet-outlet pr	3	14-Jul-10	16-Jul-10	764																																																																									
1A-BYPASS-140	Remove existing road / FW	2	19-Jul-10	20-Jul-10	764																																																																									
1A-BYPASS-150	Existing street furniture	2	19-Jul-10	20-Jul-10	764																																																																									
1A-BYPASS-160	Plane/break/excavate to Formation	20	21-Jul-10	18-Aug-10	764																																																																									
1A-BYPASS-180	Manholes & Catchpits (6 nos)	18	28-Jul-10	23-Aug-10	789																																																																									
1A-BYPASS-170	Drainage and Outfalls	28	28-Jul-10	06-Sep-10	783																																																																									
1A-BYPASS-190	Ducts and Chambers	31	28-Jul-10	09-Sep-10	780																																																																									
1A-BYPASS-200	Kerbing	38	05-Aug-10	27-Sep-10	764																																																																									
1A-BYPASS-220	Surfacing Bypass Road - 220mm Sub-base	4	28-Sep-10	01-Oct-10	764																																																																									
1A-BYPASS-210	Footpath Works	20	07-Sep-10	04-Oct-10	776																																																																									
1A-BYPASS-230	Surfacing Bypass Road - 225mm Base	4	04-Oct-10	07-Oct-10	764																																																																									
1A-BYPASS-240	Surfacing Bypass Road - 60mm Binder Course	1	08-Oct-10	08-Oct-10	764																																																																									
1A-BYPASS-250	Surfacing Bypass Road - 35mm Surface Course	1	11-Oct-10	11-Oct-10	764																																																																									
1A-BYPASS-260	Road Signs and Markings	2	12-Oct-10	13-Oct-10	764																																																																									
1A-BYPASS-280	ROAD WORKS OCEAN TERMINAL BYPASS RO	0	20-Oct-10	20-Oct-10	764	◆ ROAD WORKS OCEAN TERMINAL BYPASS ROAD COMPLETE																																																																								
1A-BYPASS-270	Landscaping	18	27-Sep-10	20-Oct-10	764																																																																									
TTM PHASE 3A (CH. ~ 1080-1200)						13-Oct-11, TTM PHASE 3A (CH. ~ 1080-1200)																																																																								
1A-23B-TTM-03A-1020	Road 8 available	0	10-Jan-11*	10-Jan-11*	214	◆ Road 8 available																																																																								
1A-23B-TTM-03A-1000	TTM PHASE 3A - Road closed (Ch.1080-1200)	0	21-Feb-11	21-Feb-11	214	◆ TTM PHASE 3A - Road closed (Ch.1080-1200)																																																																								
1A-23B-TTM-03A-1010	TTM PHASE 3A COMPLETE	0	12-Oct-11	12-Oct-11	214	◆ TTM PHASE 3A COMPLETE																																																																								
TEMPORARY AND PRELIMINARY WORKS						28-Feb-11, TEMPORARY AND PRELIMINARY WORKS																																																																								
1A-23B-3A-1000	Site clearance	2	21-Feb-11	23-Feb-11	214																																																																									
1A-23B-3A-1010	Investigate services / outfall positions / inlet-outlet pr	3	23-Feb-11	28-Feb-11	214																																																																									
TRACK IMPROVEMENT						20-Apr-11, TRACK IMPROVEMENT																																																																								
1A-23B-3A-1020	COMMENCE TRACK WORKS (CH. 1080-1200)	0	23-Feb-11	23-Feb-11	214	◆ COMMENCE TRACK WORKS (CH. 1080-1200)																																																																								
1A-23B-3A-1030	Remove existing footway/islands etc.	3	23-Feb-11	28-Feb-11	214																																																																									

Date	Revision	Checked	Approved
06-Jul-10	ETN Programme Revision 3A Progress to 9 July 2010	SCS	BSC



BFB00003291_0092

Activity ID	Activity Name	Original Duration	Start	Finish	Total Float	2008												2009												2010												2011												2012												2013												014
						INDJHMA			JJJASON			NDJH A			JJJAS			NDJH A			JJJAS			NDJH A			JJJAS			NDJH A			JJJAS			NDJH A			JJJAS			NDJH A																																				
1A-3A-1410	220mm Sub-base	1	20-Sep-11	20-Sep-11	214																																																																									
1A-3A-1420	225mm Base	1	21-Sep-11	21-Sep-11	214																																																																									
1A-3A-1430	60mm Binder Course	1	22-Sep-11	22-Sep-11	214																																																																									
1A-3A-1440	35mm Surface Course - Main Carriageway and Bo	1	23-Sep-11	23-Sep-11	214																																																																									
ROAD FINISHING		118	20-Apr-11	05-Oct-11	214																																																																									
1A-3A-1480	Parapets, Guard rails	2	20-Apr-11	22-Apr-11	231																																																																									
1A-3A-1490	Landscaping	2	22-Apr-11	26-Apr-11	231																																																																									
1A-3A-1450	Traffic Signals / Pedestrian Crossings	5	26-Sep-11	30-Sep-11	214																																																																									
1A-3A-1460	Grind Rail Joint and Sealing Compound	1	03-Oct-11	03-Oct-11	214																																																																									
1A-3A-1470	Road Signs and Markings	1	04-Oct-11	04-Oct-11	214																																																																									
1A-3A-1500	Remove temporary traffic management	1	05-Oct-11	05-Oct-11	214																																																																									
COMMISSIONING AND TESTING		5	06-Oct-11	13-Oct-11	620																																																																									
1A-3A-TEST-100	Handover / Acceptance of Roadworks and Trackwc	5	06-Oct-11	12-Oct-11	214																																																																									
1A-3A-TEST-110	Start remaining E&M works along track	0	13-Oct-11		620																																																																									
TTM PHASE 3B (CH. ~ 1200-1400)		122	24-Feb-12	14-Aug-12	422																																																																									
1A-TTM-03B-1000	TTM PHASE 3B - Road closed (Ch.1200-1400)	0	24-Feb-12		138																																																																									
1A-TTM-03B-1010	TTM PHASE 3B COMPLETE	0		13-Aug-12	138																																																																									
VICTORIA DOCK ENTRANCE BRIDGE (S16)		105	24-Feb-12	19-Jul-12	151																																																																									
1A-3B-S16-1000	VICTORIA DOCK ENTRANCE BRIDGE COMPLE	0		18-Jul-12	151																																																																									
TEMPORARY AND PRELIMINARY WORKS		1	24-Feb-12	24-Feb-12	138																																																																									
1A-3B-S16-1010	Mobilisation, site installation and temporary fencing	1	24-Feb-12	24-Feb-12	138																																																																									
OUTBOUND		55	27-Feb-12	11-May-12	199																																																																									
Demolition works		25	27-Feb-12	30-Mar-12	138																																																																									
1A-3B-S16-1020	Remove existing Parapet Barrier	1	27-Feb-12	27-Feb-12	138																																																																									
1A-3B-S16-1030	Remove existing Surfacing+Kerbs (Verge)	1	28-Feb-12	28-Feb-12	138																																																																									
1A-3B-S16-1040	Remove existing Deck Surfacing (Road)	3	29-Feb-12	02-Mar-12	138																																																																									
1A-3B-S16-1050	Remove existing Verge and Copes (hydrodemolition)	10	05-Mar-12	16-Mar-12	138																																																																									
1A-3B-S16-1060	Hydrodemolition of Service Voids in East/West Abut	10	19-Mar-12	30-Mar-12	138																																																																									
Construction		30	02-Apr-12	11-May-12	199																																																																									
Bridge Deck		25	02-Apr-12	04-May-12	204																																																																									
1A-3B-S16-1070	RC Bridge deck	10	02-Apr-12	13-Apr-12	138																																																																									
1A-3B-S16-1080	New RC parapet	7	16-Apr-12	24-Apr-12	138																																																																									
1A-3B-S16-1090	Install Steel Hangers for Tram Ducts	3	25-Apr-12	27-Apr-12	142																																																																									
1A-3B-S16-1130	Install Parapet barriers	3	25-Apr-12	27-Apr-12	138																																																																									
1A-3B-S16-1100	Lay Tram Ducts	3	30-Apr-12	02-May-12	142																																																																									
1A-3B-S16-1110	OLE foundations (2nr)	1	02-May-12	02-May-12	142																																																																									
1A-3B-S16-1120	OLE Pole/Lighting Columns (2nr)	1	03-May-12	03-May-12	142																																																																									
1A-3B-S16-1140	Paint Parapet barriers???	5	30-Apr-12	04-May-12	204																																																																									
Footway (North)		10	30-Apr-12	11-May-12	138																																																																									
1A-3B-S16-1150	Waterproofing (North side)	1	30-Apr-12	30-Apr-12	138																																																																									
1A-3B-S16-1160	Red sand asphalt (Verge)	1	01-May-12	01-May-12	138																																																																									
1A-3B-S16-1170	Kerbing	1	02-May-12	02-May-12	138																																																																									
1A-3B-S16-1180	Permanent services (by others)	5	03-May-12	09-May-12	138																																																																									
1A-3B-S16-1190	Infill concrete layer	1	10-May-12	10-May-12	138																																																																									
1A-3B-S16-1200	Pedestrian paving	1	11-May-12	11-May-12	138																																																																									

Date	Revision	Checked	Approved
06-Jul-10	ETN Programme Revision 3A Progress to 9 July 2010	SCS	BSC

BFB00003291_0094

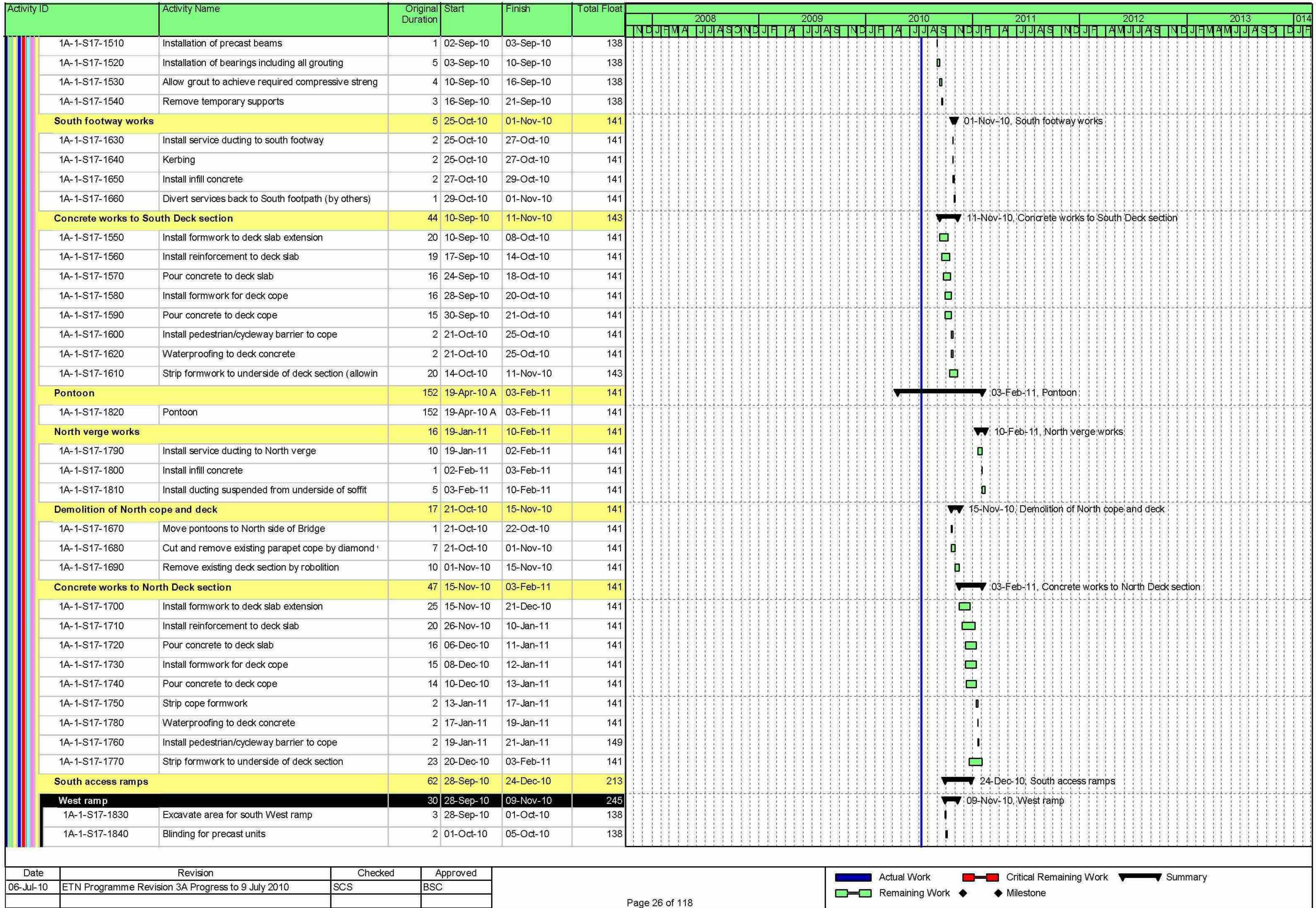
Activity ID	Activity Name	Original Duration	Start	Finish	Total Float	2008												2009												2010												2011												2012												2013												014
						2008				2009				2010				2011				2012				2013																																																				
						J	A	S	O	N	D	J	F	J	A	S	O	N	D	J	F	J	A	S	O	N	D	J	F	J	A	S	O	N	D	J	F	J	A	S	O																																					
INBOUND						50	11-May-12	19-Jul-12	151																																																	19-Jul-12, INBOUND																				
Demolition works						22	11-May-12	11-Jun-12	138																																																	11-Jun-12, Demolition works																				
1A-3B-S16-1210	Remove existing Parapet Barrier	1	11-May-12	11-May-12	138																																																																									
1A-3B-S16-1220	Remove existing Surfacing+Kerbs (Footway/Cyde	1	14-May-12	14-May-12	138																																																																									
1A-3B-S16-1230	Remove existing Verge and Copes (hydrodemoliti	10	15-May-12	28-May-12	138																																																																									
1A-3B-S16-1240	Hydrodemolition of Service Voids in East/West Abut	10	29-May-12	11-Jun-12	138																																																																									
Construction						28	12-Jun-12	19-Jul-12	151																																																	19-Jul-12, Construction																				
Bridge Deck						27	12-Jun-12	18-Jul-12	151																																																	18-Jul-12, Bridge Deck																				
1A-3B-S16-1250	RC Bridge deck	10	12-Jun-12	25-Jun-12	138																																																																									
1A-3B-S16-1260	New RC parapet	10	26-Jun-12	09-Jul-12	138																																																																									
1A-3B-S16-1270	Install Steel Hangers for Tram Ducts	2	10-Jul-12	11-Jul-12	151																																																																									
1A-3B-S16-1290	Install Parapet barriers	2	10-Jul-12	11-Jul-12	151																																																																									
1A-3B-S16-1280	Lay Tram Ducts	3	12-Jul-12	16-Jul-12	151																																																																									
1A-3B-S16-1300	Paint Parapet barriers???	5	12-Jul-12	18-Jul-12	151																																																																									
Cycleway / Footway (South)						8	10-Jul-12	19-Jul-12	151																																																	19-Jul-12, Cycleway / Footway (South)																				
1A-3B-S16-1310	Waterproofing (South side and Trackway)	1	10-Jul-12	10-Jul-12	151																																																																									
1A-3B-S16-1320	Red sand asphalt	1	11-Jul-12	11-Jul-12	151																																																																									
1A-3B-S16-1330	Kerbing	1	12-Jul-12	12-Jul-12	151																																																																									
1A-3B-S16-1350	Infill concrete layer	1	17-Jul-12	17-Jul-12	151																																																																									
1A-3B-S16-1360	Surfacing	1	18-Jul-12	18-Jul-12	151																																																																									
1A-3B-S16-1340	Permanent services (by others?)	5	13-Jul-12	19-Jul-12	151																																																																									
ROAD- /TRACKWORKS (Ch. 1200 - 1400)						116	27-Feb-12	06-Aug-12	138																																																	06-Aug-12, ROAD- /TRACKWORKS																				
TEMPORARY AND PRELIMINARY WORKS						5	27-Feb-12	02-Mar-12	180																																																	02-Mar-12, TEMPORARY AND PRELIMINARY																				
1A-3B-1000	Site clearance	2	27-Feb-12	28-Feb-12	180																																																																									
1A-3B-1010	Investigate services / outfall positions / inlet-outlet pr	3	29-Feb-12	02-Mar-12	180																																																																									
TRACK IMPROVEMENT						52	29-Feb-12	10-May-12	180																																																	10-May-12, TRACK IMPROVEMENT																				
1A-3B-1020	COMMENCE TRACK WORKS (CH. 1200-1400)	0	29-Feb-12		181																																																	◆ COMMENCE TRACK WORKS (CH. 1200-1400)																								
1A-3B-1030	Remove existing footway/islands etc.	2	29-Feb-12	01-Mar-12	181																																																																									
1A-3B-1040	Plane out existing surfacing over Trams Footprint ("	2	05-Mar-12	06-Mar-12	180																																																																									
1A-3B-1050	Carry out inspection and testing of Subgrade	1	07-Mar-12	07-Mar-12	180																																																																									
1A-3B-1060	Sawcut Separation - Tram Ducts Outer Edge	3	07-Mar-12	09-Mar-12	180																																																																									
1A-3B-1070	Break Out / Excavate to formation of Tram Footprir	7	08-Mar-12	16-Mar-12	180																																																																									
1A-3B-1080	Place Sub-base Type 1	7	08-Mar-12	16-Mar-12	182																																																																									
1A-3B-1100	Tram Ducts & Chambers	8	15-Mar-12	26-Mar-12	181																																																																									
1A-3B-1090	Drainage and Outfalls	8	16-Mar-12	27-Mar-12	180																																																																									
1A-3B-1140	Installation of IMU Drains and Cable Ducting - Outb	5	30-Mar-12	05-Apr-12	203																																																																									
1A-3B-1110	Excavate and Cast OLE Foundations (8 nos)	22	19-Mar-12	17-Apr-12	182																																																																									
1A-3B-1120	Lay SL Duct to OLE	8	06-Apr-12	17-Apr-12	182																																																																									
1A-3B-1130	Prepare and check suitability of Formation	15	28-Mar-12	17-Apr-12	180																																																																									
1A-3B-1150	Track Improvement Layer - Outbound	15	30-Mar-12	19-Apr-12	180																																																																									
1A-3B-1160	Installation of IMU Drains and Cable Ducting - Inbo	5	20-Apr-12	26-Apr-12	190																																																																									
1A-3B-1170	Track Improvement Layer - Inbound	15	20-Apr-12	10-May-12	180																																																																									
TRACK INSTALLATION						74	25-Apr-12	06-Aug-12	138																																																	06-Aug-12, TRACK INSTALLATION																				
1A-3B-1180	TRACK WORKS COMPLETE (CH. 1200-1400)	0		06-Aug-12	138																																																	◆ TRACK WORKS COMPLETE (CH. 1																								
OUTBOUND						20	25-Apr-12	22-May-12	178																																																	22-May-12, OUTBOUND																				

Date	Revision	Checked	Approved
06-Jul-10	ETN Programme Revision 3A Progress to 9 July 2010	SCS	BSC

■ Actual Work ■ Critical Remaining Work ▶ Summary
■ Remaining Work ◆ Milestone

BFB00003291_0095

BFB00003291_0099



Date	Revision	Checked	Approved
06-Jul-10	ETN Programme Revision 3A Progress to 9 July 2010	SCS	BSC

█ Actual Work
 █ Critical Remaining Work
 ▶ Summary
█ Remaining Work
 ◆ Milestone

