

Activity ID	Activity Name	Original Duration	Start	Finish	Total Float	2008												2009												2010												2011												2012												2013												014
						J				A				S				O				N				D				J				F				A				M				J				J				A				S				O				N				D				J				F
1C-16-TRMS-80	Package Test Tramstop	5	01-Dec-11	07-Dec-11	485																																																																									
Road & Track Works		913	12-Dec-08 A	24-Oct-12	353																																																																									
North St Andrews Square		161	06-Sep-10	05-May-11	678																																																																									
1C-16-TRCK-170	Dummy	100	06-Sep-10	04-Mar-11	116																																																																									
1C-16B-TRCK-70	Set Track (Dummy)	12	25-Mar-11	13-Apr-11	116																																																																									
1C-17K-JNCS-70	installation of traffic light control - Junction 29	11	13-Apr-11	28-Apr-11	701																																																																									
1C-17K-JNCS-60	installation of traffic light control - Junction 28 part2	4	28-Apr-11	05-May-11	701																																																																									
St Andrews Sq. North		118	15-Jul-11	13-Jan-12	572																																																																									
1C-17K-JNCS-90	installation of traffic light control - Junction 36	6	09-Nov-11	17-Nov-11	585																																																																									
1C-16-TRCK-180	Dummy	80	15-Jul-11	13-Jan-12	293																																																																									
Design		0	12-Dec-08 A	12-Dec-08 A																																																																										
12240	Issue Construction Drawings	0		12-Dec-08 A																																																																										
St Andrews Sq. South		80	13-Jan-12	04-May-12	453																																																																									
1C-16A-JNCS-70	installation of traffic light control - Junction 33	8	06-Apr-12	18-Apr-12	465																																																																									
1C-16-TRCK-190	Dummy	80	13-Jan-12	04-May-12	293																																																																									
St Andrews Sq. West		123	04-May-12	24-Oct-12	353																																																																									
1C-17K-JNCS-80	installation of traffic light control - Junction 35	8	26-Sep-12	08-Oct-12	365																																																																									
1C-16-TRCK-200	Dummy	100	04-May-12	24-Oct-12	293																																																																									
Waverley Junction / South St Andrews St. Ch 370 to 150		311	09-Jul-10	11-Oct-11	632																																																																									
tie Change Order		0	09-Jul-10	09-Jul-10	156																																																																									
1C-16-SAS-160	Assumed issued of tie Change Order BDDI to IFC	0	09-Jul-10*		156																																																																									
Traffic Management		222	09-Jul-10	07-Jun-11	702																																																																									
1C-16-SAS-135	Phase 1 - South-North St Andrew St Closed	0	09-Jul-10		156																																																																									
1C-16-SAS-156	Phase 2 - Bus Traffic to Nearside Westbound Lane	0	09-Jul-10		156																																																																									
1C-16-SAS-167	Phase 3 - Bus Traffic to Nearside Eastbound Lane (0	11-Apr-11		128																																																																									
1C-16-SAS-168	Closure for concreting across PS	1	06-Jun-11	07-Jun-11	702																																																																									
1C-16-SAS-159	Phase 4 - Bus Traffic to Nearside Westbound Lane:	0	07-Jun-11		702																																																																									
Phases 1 & 2		212	09-Jul-10	20-May-11	691																																																																									
1C-16A-SAS1-252	Erect Pedestrian Barrier	1	09-Jul-10*	12-Jul-10	111																																																																									
1C-16A-SAS1-244	Investigate services / outfall positions / inlet-outlet pr	4	12-Jul-10	16-Jul-10	153																																																																									
1C-16A-SAS1-143	Site Clearance & Site Compound	12	09-Jul-10	27-Jul-10	684																																																																									
1C-16A-JNCS-60	installation of traffic light control - Junction 30	8	27-Apr-11	09-May-11	700																																																																									
1C-16A-SAS1-233	OLE Wall Fixings (16nr) South-North St Andrew St	16	27-Apr-11	20-May-11	593																																																																									
Phase 1 - Inbound SSAS + PS		83	12-Jul-10	05-Nov-10	753																																																																									
1C-16A-SAS1-166	Plane Main Carriageway 250mm	3	12-Jul-10	15-Jul-10	111																																																																									
1C-16A-SAS1-247	Check suitability of formation (ongoing)	0	15-Jul-10		115																																																																									
1C-16A-SAS1-165	Excavate to Formation for Carriageway and Track (5	15-Jul-10	22-Jul-10	111																																																																									
1C-16A-SAS1-176	Remove existing kerbs to store.	5	15-Jul-10	22-Jul-10	687																																																																									
1C-16A-SAS1-248	Capping Layer to Adjacent Carriageway (600mm)	5	15-Jul-10	22-Jul-10	115																																																																									
1C-16A-SAS1-239	Make good Formation with Type 1 (Ave 220mm)	2	22-Jul-10	26-Jul-10	111																																																																									
1C-16A-SAS1-154	Core/Cast OLE Pole Foundations	3	22-Jul-10	27-Jul-10	155																																																																									
1C-16A-SAS1-370	Installation of IMU Drains and Cable Ducting	2	26-Jul-10	28-Jul-10	111																																																																									
1C-16A-SAS1-171	Carry out inspection and testing of Subgrade	1	28-Jul-10	29-Jul-10	111																																																																									
1C-16A-SAS1-172	Blinding Concrete	2	29-Jul-10	06-Sep-10	111																																																																									
1C-16A-SAS1-163	Place RC Improvement Slab (+ cure lag)	6	06-Sep-10	14-Sep-10	111																																																																									

Date	Revision	Checked	Approved
06-Jul-10	ETN Programme Revision 3A Progress to 9 July 2010	SCS	BSC

█ Actual Work █ Critical Remaining Work ▶ Summary
 Remaining Work ◆ Milestone

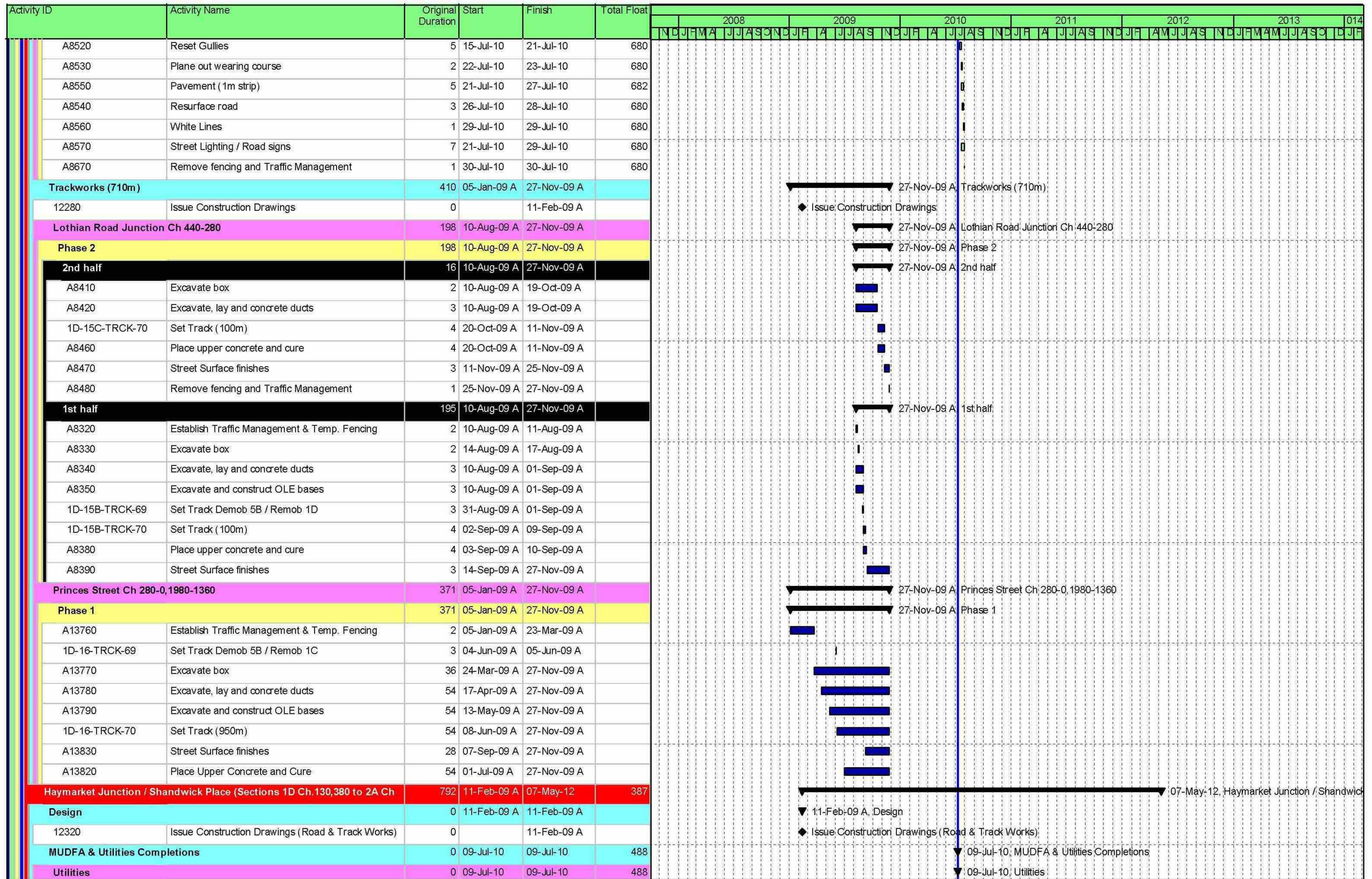
BFB00003291_0142

Activity ID	Activity Name	Original Duration	Start	Finish	Total Float	2008												2009												2010												2011												2012												2013																							
						JAN				FEB				MAR				APR				MAY				JUN				JUL				AUG				SEP				OCT				NOV				DEC																																							
1D-14-SGNW-60	Install Signalling Wayside Equipment SHP - HAY	6	16-Apr-12	24-Apr-12	360																																																																																				
1D-15/16-TELC-60	Install Fibre Optic Cables SAS - PST - SHP	7	13-Apr-12	24-Apr-12	360																																																																																				
1D-13//17-ELEC-60	Install Electrical Cables CAE - HTE	23	04-Mar-13	04-Apr-13	183																																																																																				
Princes Street West (inc.) to Shadwick Place (exc.)		460	05-Jan-09 A	30-Jul-10	821																																																																																				
Roadworks		460	05-Jan-09 A	30-Jul-10	821																																																																																				
12270	Issue Construction Drawings	0		11-Feb-09 A																																																																																					
Princes Street Ch 280-0, 1980-1360		380	05-Jan-09 A	27-Nov-09 A																																																																																					
South Channel		380	05-Jan-09 A	27-Nov-09 A																																																																																					
A13940	Establish Traffic Management & Temp. Fencing	2	05-Jan-09 A	23-Mar-09 A																																																																																					
A13950	Excavate South kerblines	19	07-Sep-09 A	27-Nov-09 A																																																																																					
A13960	Relay South kerbs	48	07-Sep-09 A	27-Nov-09 A																																																																																					
A13970	Reset Gullies	48	07-Sep-09 A	27-Nov-09 A																																																																																					
A13980	Plane out wearing course	10	07-Sep-09 A	27-Nov-09 A																																																																																					
A13990	Resurface road	30	07-Sep-09 A	27-Nov-09 A																																																																																					
A14000	Pavement (1m strip)	48	07-Sep-09 A	27-Nov-09 A																																																																																					
A14010	White Lines	1	25-Nov-09 A	27-Nov-09 A																																																																																					
A14020	Street Lighting / Road signs	5	23-Nov-09 A	27-Nov-09 A																																																																																					
A14030	Remove fencing and Traffic Management	3	27-Nov-09 A	27-Nov-09 A																																																																																					
North Channel		352	05-Jan-09 A	27-Nov-09 A																																																																																					
A13840	Establish Traffic Management & Temp. Fencing	2	05-Jan-09 A	23-Mar-09 A																																																																																					
A13850	Excavate North kerblines	19	13-Jul-09 A	27-Nov-09 A																																																																																					
A13860	Relay North kerbs	48	13-Jul-09 A	27-Nov-09 A																																																																																					
A13870	Reset Gullies	48	07-Sep-09 A	27-Nov-09 A																																																																																					
A13880	Plane out wearing course	10	07-Sep-09 A	27-Nov-09 A																																																																																					
A13890	Resurface road	7	07-Sep-09 A	27-Nov-09 A																																																																																					
A13900	Pavement (1m strip)	48	07-Sep-09 A	27-Nov-09 A																																																																																					
A13910	White Lines	1	25-Nov-09 A	27-Nov-09 A																																																																																					
A13920	Street Lighting / Road signs	5	23-Nov-09 A	27-Nov-09 A																																																																																					
A13930	Remove fencing and Traffic Management	1	27-Nov-09 A	27-Nov-09 A																																																																																					
Lothian Road Junction Ch 440-280		392	05-Jan-09 A	30-Jul-10	821																																																																																				
Phase 1		93	05-Jan-09 A	20-Mar-09 A																																																																																					
A8250	Establish Traffic Management & Temp. Fencing	2	05-Jan-09 A	20-Mar-09 A																																																																																					
A8260	Take down permanent traffic signs / signals	5	05-Jan-09 A	20-Mar-09 A																																																																																					
A8270	Excavate traffic islands	3	05-Jan-09 A	20-Mar-09 A																																																																																					
A8280	Subbase	2	05-Jan-09 A	20-Mar-09 A																																																																																					
A8290	Temporary surfacing	3	05-Jan-09 A	20-Mar-09 A																																																																																					
A8300	Temporary Traffic signals / signs / white lines	5	05-Jan-09 A	20-Mar-09 A																																																																																					
A8310	Remove fencing and Traffic Management	1	05-Jan-09 A	20-Mar-09 A																																																																																					
Phase 2		16	09-Jul-10	30-Jul-10	821																																																																																				
A8490	Establish Traffic Management & Temp. Fencing	2	09-Jul-10	12-Jul-10	680																																																																																				
A8500	Excavate North kerblines	2	13-Jul-10	14-Jul-10	680																																																																																				
A8510	Relay North kerbs	5	14-Jul-10	20-Jul-10	680																																																																																				

Date	Revision	Checked	Approved
06-Jul-10	ETN Programme Revision 3A Progress to 9 July 2010	SCS	BSC



BFB00003291_0147



Date	Revision	Checked	Approved	
06-Jul-10	ETN Programme Revision 3A Progress to 9 July 2010	SCS	BSC	

Activity ID	Activity Name	Original Duration	Start	Finish	Total Float	2008												2009												2010												2011												2012												2013												014												
						2008				2009				2010				2011				2012				2013																																																																
1D-14-SP7-773	Kerbing	10	22-Mar-12	05-Apr-12	360																																																																																					
1D-14-SP7-774	Setted Area	6	04-Apr-12	12-Apr-12	355																																																																																					
1D-14-SP7-775	Footpath	3	12-Apr-12	17-Apr-12	355																																																																																					
Phase SP4 - Ch.130,813 – 130,667 (Coates Crescent / Atholl Crescent)		91	02-Mar-11	12-Jul-11	613																																																																																					
1D-14R-SP4-618	Plane Main Carriageway for Overlay	3	02-Mar-11	07-Mar-11	137																																																																																					
1D-14R-SP4-629	Check suitability of formation (ongoing)	0	07-Mar-11		294																																																																																					
1D-14R-SP4-627	Excavate to Formation for Carriageway and Track (13	07-Mar-11	24-Mar-11	288																																																																																					
1D-14R-SP4-628	Remove existing kerbs	13	07-Mar-11	24-Mar-11	590																																																																																					
1D-14R-SP4-630	Capping Layer to Adjacent Carriageway (600mm)	11	09-Mar-11	24-Mar-11	292																																																																																					
1D-14R-SP4-626	Core/Cast OLE Pole Foundations	18	02-Mar-11	28-Mar-11	588																																																																																					
1D-14R-SP4-631	Make good Formation with Type 1 (Ave 220mm)	2	24-Mar-11	28-Mar-11	288																																																																																					
1D-14R-SP4-632	Installation of IMU Drains and Cable Ducting	4	28-Mar-11	04-Apr-11	288																																																																																					
1D-14R-SP4-633	Carry out inspection and testing of Subgrade	1	04-Apr-11	05-Apr-11	288																																																																																					
1D-14R-SP4-634	Blinding Concrete	4	05-Apr-11	11-Apr-11	288																																																																																					
1D-14R-SP4-635	250mm RC Improvement Slab (+ cure lag)	10	11-Apr-11	25-Apr-11	288																																																																																					
1D-14R-SP4-636	Access for Track Laying	0	27-Apr-11		288																																																																																					
1D-14R-SP4-637	Installation of Noise & Vibration Mat (if reqd)	0	27-Apr-11		288																																																																																					
1D-14/15-SIGN-70	point machine mechanical set up	10	27-Apr-11	12-May-11	655																																																																																					
1D-14R-TRCK-90(3)	Track Crossover + mob	13	27-Apr-11	17-May-11	288																																																																																					
1D-14R-SP4-640	Welding & Grinding	9	18-May-11	01-Jun-11	288																																																																																					
1D-14R-SP4-641	Drainage / Rail Connections	9	18-May-11	01-Jun-11	521																																																																																					
1D-14R-SP4-642	Installation of IMU Boxes and Loops	9	18-May-11	01-Jun-11	521																																																																																					
1D-14R-SP4-643	Final Rail Alignment - Check and Approve	9	19-May-11	02-Jun-11	288																																																																																					
1D-14R-TRCK-70(3)	Set track (2x146m)(sleepers/rail) + mob	15	17-May-11	08-Jun-11	288																																																																																					
1D-14R-SP4-644	230mm Concrete Supporting Layer (+ cure lag)	12	23-May-11	09-Jun-11	515																																																																																					
Drainage & Ducts		40	07-Mar-11	04-May-11	638																																																																																					
1D-14R-SP4-620	Outfall Connections	1	07-Mar-11	08-Mar-11	137																																																																																					
1D-14R-SP4-621	Drainage to Discharge Points	14	08-Mar-11	28-Mar-11	137																																																																																					
1D-14R-SP4-624	Traffic Signal Ducts	2	28-Mar-11	30-Mar-11	305																																																																																					
1D-14R-SP4-623	Comms Ducts & Chambers	8	24-Mar-11	06-Apr-11	303																																																																																					
1D-14R-SP4-622	Traction Ducts & Chambers	12	24-Mar-11	12-Apr-11	299																																																																																					
1D-14R-SP4-625	Lighting Ducts	14	13-Apr-11	04-May-11	540																																																																																					
Shandwick Place Tram Stop		55	28-Mar-11	16-Jun-11	631																																																																																					
1D-14R-SP4-646	Ducting and Chambers	15	28-Mar-11	19-Apr-11	137																																																																																					
1D-14R-SP4-647	Tramstop Platform	40	19-Apr-11	16-Jun-11	533																																																																																					
1D-14R-SP4-648	Deliver and Install Tramstop Shelter (tba)	0	16-Jun-11*		533																																																																																					
Pavement Construction over tracks		17	16-Jun-11	11-Jul-11	614																																																																																					
1D-14R-SP4-1020	124mm Binder	3	16-Jun-11	21-Jun-11	527																																																																																					
1D-14R-SP4-841	35mm Wearing Course	1	21-Jun-11	22-Jun-11	527																																																																																					
1D-14R-SP4-802	15mm Surface Treatment	2	07-Jul-11	11-Jul-11	516																																																																																					
Phase SP4 Carriageway Construction		75	24-Mar-11	12-Jul-11	613																																																																																					
1D-14R-SP4-844	Sub-base 220mm all carriageway areas	4	24-Mar-11	30-Mar-11	292																																																																																					
1D-14R-SP4-847	Signs / Street Furniture	5	04-Apr-11	11-Apr-11	295																																																																																					
1D-14R-SP4-895	Kerbing - Eastbound/Westbound K7	9	30-Mar-11	13-Apr-11	292																																																																																					

Date	Revision	Checked	Approved
06-Jul-10	ETN Programme Revision 3A Progress to 9 July 2010	SCS	BSC

█ Actual Work █ Critical Remaining Work ▶ Summary
█ Remaining Work ◆ Milestone

BFB00003291_0157

Activity ID	Activity Name	Original Duration	Start	Finish	Total Float	2008												2009												2010												2011												2012												2013												014
						JAN				FEB				MAR				APR				MAY				JUN				JUL				AUG				SEP				OCT				NOV				DEC																												
1D-14C-H1-913	Check suitability of formation (ongoing)	0	23-Sep-10		410																																					◆ Check suitability of formation (ongoing)																																				
1D-14C-H1-902	Excavate to Formation for Carriageway and Track (3	23-Sep-10	28-Sep-10	407																																																																									
1D-14C-H1-924	Capping Layer to Adjacent Carriageway (600mm)	2	24-Sep-10	28-Sep-10	414																																																																									
1D-14C-H1-945	Make good Formation with Type 1 (Ave 220mm)	1	28-Sep-10	29-Sep-10	407																																																																									
1D-14C-H1-926	Installation of IMU Drains and Cable Ducting	1	29-Sep-10	30-Sep-10	407																																																																									
1D-14C-H1-927	Carry out inspection and testing of Subgrade	1	30-Sep-10	01-Oct-10	407																																																																									
1D-14C-H1-938	Blinding Concrete	1	01-Oct-10	04-Oct-10	407																																																																									
1D-14C-H1-919	Place RC Improvement Slab (+ cure lag)	3	04-Oct-10	07-Oct-10	407																																																																									
1D-14C-H1-1110	Access for Track Laying	0	17-Nov-10		407																																																																									
1D-14C-H1-941	Installation of Noise & Vibration Mat (if reqd)	0	17-Nov-10		407																																																																									
1D-14C-H1-923	Welding & Grinding	2	15-Feb-11	17-Feb-11	612																																																																									
1D-14C-H1-934	Drainage / Rail Connections	2	15-Feb-11	17-Feb-11	614																																																																									
1D-14C-H1-955	Installation of IMU Boxes and Loops	2	15-Feb-11	17-Feb-11	614																																																																									
1D-14C-TRCK-70(3)	Set staggered track (1x54m)(sleepers/rail)	4	14-Feb-11	18-Feb-11	407																																																																									
1D-14C-H1-936	Final Rail Alignment - Check and Approve	2	16-Feb-11	18-Feb-11	612																																																																									
1D-14C-H1-937	230mm Concrete Supporting Layer (incl cure lag)	2	17-Feb-11	21-Feb-11	612																																																																									
Phase 1/2 - Inbound Track		94	19-Oct-10	15-Mar-11	703																																																	▼ 15-Mar-11, Phase 1/2 - Inbound Track																								
1D-14D-H1-1080	Check suitability of formation (ongoing)	1	19-Oct-10	20-Oct-10	410																																																																									
1D-14D-H1-889	Excavate to Formation for Carriageway and Track (4	19-Oct-10	25-Oct-10	407																																																																									
1D-14D-H1-901	Capping Layer to Adjacent Carriageway (600mm)	3	20-Oct-10	25-Oct-10	416																																																																									
1D-14D-H1-872	Make good Formation with Type 1 (Ave 220mm)	2	25-Oct-10	27-Oct-10	407																																																																									
1D-14D-H1-883	Installation of IMU Drains and Cable Ducting	2	27-Oct-10	29-Oct-10	407																																																																									
1D-14D-H1-894	Carry out inspection and testing of Subgrade	1	29-Oct-10	03-Nov-10	407																																																																									
1D-14D-H1-925	Blinding Concrete	2	03-Nov-10	05-Nov-10	407																																																																									
1D-14D-H1-906	Place RC Improvement Slab (+ cure lag)	3	04-Nov-10	09-Nov-10	407																																																																									
1D-14D-H1-897	Access for Track Laying	0	17-Nov-10		407																																																																									
1D-14D-H1-918	Installation of Noise & Vibration Mat (if reqd)	0	17-Nov-10		411																																																																									
1D-14D-H1-1090	Welding & Grinding	3	21-Feb-11	24-Feb-11	407																																																																									
1D-14D-H1-911	Drainage/Rail Connections	3	21-Feb-11	24-Feb-11	411																																																																									
1D-14D-H1-882	Installation of IMU Boxes and Loops	3	21-Feb-11	24-Feb-11	411																																																																									
1D-14D-TRCK-70(3)	Set track (1x108m)(sleepers/rail)	5	18-Feb-11	25-Feb-11	407																																																																									
1D-14D-H1-893	Final Rail Alignment - Check and Approve	3	22-Feb-11	25-Feb-11	407																																																																									
1D-14D-H1-904	230mm Concrete Supporting Layer (incl cure lag)	4	24-Feb-11	02-Mar-11	407																																																																									
Pavement Construction over tracks		4	09-Mar-11	15-Mar-11	703																																																	▼ 15-Mar-11, Pavement Construction over tracks																								
1D-14CD-H1-736	124mm Binder	2	09-Mar-11	11-Mar-11	605																																																																									
1D-14CD-H1-717	35mm Wearing Course	1	11-Mar-11	14-Mar-11	605																																																																									
1D-14CD-H1-718	15mm Surface Treatment	1	14-Mar-11	15-Mar-11	605																																																																									
Phase 1 Carriageway Construction		29	02-Mar-11	13-Apr-11	687																																																	▼ 13-Apr-11, Phase 1 Carriageway Construction																								
1D-14CD-H1-910	Plane Access Area - Eastbound Lane	1	02-Mar-11	03-Mar-11	407																																																																									
1D-14CD-H1-693	Check suitability of formation (ongoing)	0	03-Mar-11		407																																																																									
1D-14CD-H1-701	Excavate Eastbound Lane to Formation (incl for Ca	2	03-Mar-11	07-Mar-11	407																																																																									
1D-14CD-H1-692	Remove existing kerbs	2	03-Mar-11	07-Mar-11	615																																																																									
1D-14CD-H1-724	Capping Layer to Eastbound Carriageway (600mm)	2	03-Mar-11	07-Mar-11	407																																																																									

Date	Revision	Checked	Approved
06-Jul-10	ETN Programme Revision 3A Progress to 9 July 2010	SCS	BSC

- Remaining Work
- Critical Remaining Work
- Summary
- Milestone

