

Activity ID	Activity Name	Original Duration	Start	Finish	Total Float	2008				2009				2010				2011				2012							
						Qtr 4	Qtr 1	Qtr 2	Qtr 3	Qtr 4	Qtr 1	Qtr 2	Qtr 3	Qtr 4	Qtr 1	Qtr 2	Qtr 3	Qtr 4	Qtr 1	Qtr 2	Qtr 3	Qtr 4	Qtr 1	Qtr 2	Qtr 3	Qtr 4	Qtr 1	Qtr 2	Qtr 3
						O	N	D	J	J	F	M	A	M	J	J	A	S	O	N	D	J	F	M	A	M	J	J	A
859	Ducts and Bottom Ballast	16	17-Feb-10	10-Mar-10	184																								
5B-08-TRCK-70	Track laying (790m)	20	11-Mar-10	08-Apr-10	184																								
889	Top Ballast	10	09-Apr-10	22-Apr-10	249																								
899	Fencing and Trackside finishes	16	23-Apr-10	17-May-10	522																								
Edinburgh Park Station Tram Stop		763	11-Jul-08 A	18-Aug-11	340																								
12910	Issue Construction Drawings	0		11-Jul-08 A																									
132	Civil Engineering and Builderworks	65	09-Apr-10	12-Jul-10	443																								
278	Order REC Supply	0	28-Oct-10		536																								
A5238	Access for visual inspection for E&M Tram Stop installation (05B Edinburgh Pa	0	24-Nov-10		542																								
A2140	Deliver and Install Shelter	10	10-Dec-10	24-Dec-10	312																								
A5240	Install LV Power Supply and LV Power Equipment	25	24-Dec-10	11-Feb-11	312																								
A5239	Access for E&M Tram Stop installation (05B Edinburgh Park Station)	0	24-Dec-10		337																								
A6290	Installation of SIG-interlocking cubide	15	21-Jan-11	11-Feb-11	352																								
A5250	Install Telecon Equipment	20	11-Feb-11	11-Mar-11	322																								
A5260	Install Station Control Equipment + AFC Equipment	25	11-Feb-11	18-Mar-11	312																								
A5270	Package Test Tramstop	5	18-Mar-11	25-Mar-11	312																								
A6300	Commissioning of SIG -interlocking cubide	5	11-Aug-11	18-Aug-11	222																								
Edinburgh Park Station (exc.) to Edinburgh Park Central (inc.)		871	23-May-08 A	02-Dec-11	266																								
Edinburgh Park Central Tram Stop		837	11-Jul-08 A	02-Dec-11	266																								
12920	Issue Construction Drawings	0		11-Jul-08 A																									
166	Civil Engineering and Building Works	65	02-Feb-11	05-May-11	244																								
268	Order REC Supply	0	20-Jul-11		361																								
A5278	Access for visual inspection for E&M Tram Stop installation (05B Edinburgh Pa	0	16-Aug-11		353																								
A2110	Deliver and Install Shelter	10	01-Sep-11	15-Sep-11	137																								
A5280	Install LV Power Supply and LV Power Equipment	25	15-Sep-11	20-Oct-11	137																								
A5279	Access for E&M Tram Stop installation (05B Edinburgh Park)	0	15-Sep-11		148																								
A5290	Install Telecon Equipment	20	20-Oct-11	17-Nov-11	147																								
A5300	Install Station Control Equipment + AFC Equipment	25	20-Oct-11	24-Nov-11	137																								
A5310	Package Test Tramstop	5	24-Nov-11	02-Dec-11	137																								
Trackwork (854m)		503	25-Nov-08 A	08-Mar-11	324																								
12930	Issue Construction Drawings	0		25-Nov-08 A																									
203	Earthworks- Subbase	11	27-Nov-09	14-Dec-09	199																								
490	OLE Foundations - Drainage	19	15-Dec-09	22-Jan-10	199																								
829	Track Formation - Ducts	16	25-Jan-10	15-Feb-10	199																								
5B-07-TRCK-69	Track laying Demob 6A / Remob 5B	3	12-Nov-10	16-Nov-10	7																								
5B-07-TRCK-70	Track laying (854m)	44	17-Nov-10	01-Feb-11	7																								
849	Track Finishes	15	02-Feb-11	22-Feb-11	45																								
869	Fencing	10	23-Feb-11	08-Mar-11	324																								
Edinburgh Park Station Bridge (S27)		454	23-May-08 A	30-Mar-10	683																								
12940	Issue Construction Drawings	0		23-May-08 A																									
Establishment		20	25-Aug-08 A	27-Nov-09	168																								
13010	Access Roads /Site Clearance /Offices & Compounds	20	25-Aug-08 A	27-Nov-09	168																								

Date	Revision	Checked	Approved	Page 39 of 46
24-Nov-09		SCS		

—	Rev 1 Baseline	█	Remaining Work	◇	Rev 1 Baseline Milestone	➤	Summary
█	Actual Work	█	Critical Remaining Work	◆	Milestone		

CEC00624424_0097

Activity ID	Activity Name	Original Duration	Start	Finish	Total Float	2008				2009				2010				2011				2012				
						Qtr 4	Qtr 1	Qtr 2	Qtr 3	Qtr 4	Qtr 1	Qtr 2	Qtr 3	Qtr 4	Qtr 1	Qtr 2	Qtr 3	Qtr 4	Qtr 1	Qtr 2	Qtr 3	Qtr 4	Qtr 1	Qtr 2	Qtr 3	Qtr 4
						O	N	D	J	F	M	A	M	J	J	A	S	O	N	D	J	F	M	A	M	J
Substructure		176	01-Dec-08 A	31-Mar-09 A		31-Mar-09 A: Substructure																				
13150	Abutment North	92	01-Dec-08 A	12-Mar-09 A																						
13170	Pier 6	32	02-Dec-08 A	19-Jan-09 A																						
13180	Pier 5	41	12-Dec-08 A	23-Jan-09 A																						
13190	Pier 4	40	07-Jan-09 A	17-Feb-09 A																						
13210	Pier 2	52	14-Jan-09 A	04-Feb-09 A																						
13220	Pier 1	61	21-Jan-09 A	05-Mar-09 A																						
13200	Pier 3	47	12-Feb-09 A	26-Feb-09 A																						
13230	Abutment South	94	24-Feb-09 A	31-Mar-09 A																						
Superstructure		273	23-Mar-09 A	30-Mar-10	683	30-Mar-10: Superstructure																				
13160	Erect Falsework	45	23-Mar-09 A	31-Jul-09 A																						
13250	Place U beams	36	08-Apr-09 A	30-May-09 A																						
13270	Pour 1- Abutment North	15	10-Apr-09 A	20-Jul-09 A																						
13280	Pour 2 - Pier 6	17	20-Apr-09 A	21-Jul-09 A																						
13410	Pour 15 - Span 7	15	20-Apr-09 A	27-Oct-09 A																						
13260	Permanent Formwork	32	24-Apr-09 A	14-Aug-09 A																						
13390	Pour 13 - Span 6	14	27-Apr-09 A	15-Oct-09 A																						
13360	Pour 10 - Span 5	14	11-May-09 A	22-Sep-09 A																						
13290	Pour 3 - Pier 5	17	18-May-09 A	27-Jul-09 A																						
13310	Pour 5 - Pier 3	17	18-May-09 A	03-Aug-09 A																						
13370	Pour 11 - Span 2	14	18-May-09 A	10-Nov-09 A																						
13330	Pour 7 - Pier 1	17	19-May-09 A	24-Aug-09 A																						
13340	Pour 8 - Abutment South	16	25-May-09 A	25-Aug-09 A																						
13350	Pour 9 - Span 3	14	25-May-09 A	17-Sep-09 A																						
13400	Pour 14 - Span 1	13	25-May-09 A	09-Nov-09 A																						
13300	Pour 4 - Pier 4	17	26-May-09 A	28-Jul-09 A																						
13380	Pour 12 - Span 4	14	26-May-09 A	07-Oct-09 A																						
13320	Pour 6 - Pier 2	17	08-Jun-09 A	10-Aug-09 A																						
13240	Dismantle Falsework	29	12-Oct-09 A	14-Jan-10	737																					
13440	Ramp North	53	23-Nov-09 A	17-Feb-10	688																					
13420	Track Upstands	46	27-Nov-09	15-Feb-10	714																					
13430	Bridge Finishes	77	27-Nov-09	30-Mar-10	168																					
13450	Ramp South	53	08-Jan-10	23-Mar-10	688																					
05C Edinburgh Park Central (exc.) to Gogarburn (inc.)		917	13-May-08 A	07-Feb-12	228	07-Feb-12: 05C Edin																				
E & M Installations		169	26-May-11	03-Feb-12	230	03-Feb-12: E & M Ins																				
Edinburgh Park to Depot		66	20-Oct-11	03-Feb-12	230	03-Feb-12: Edinburg																				
A4163	Access for visual inspection for E&M wayside installation (05C)	0	20-Oct-11		295	♦ Access for visual inspection fo																				
A4178	Access for visual inspection to cable pits for cable laying (05C)	0	03-Nov-11		285	♦ Access for visual inspection f																				
5C-3/6-OHLE-50	Installation of poles and building fixings	10	21-Nov-11	05-Dec-11	6	♦ Access for E&M wayside in																				
A4164	Access for E&M wayside installation (05C)	0	21-Nov-11		274																					
5C-3/6-OHLE-60	Overhead Catenary Line	26	06-Dec-11	24-Jan-12	6																					
A4180	Install Electrical Cables	17	06-Dec-11	11-Jan-12	101																					

CEC00624424_0098

Activity ID	Activity Name	Original Duration	Start	Finish	Total Float	2008				2009				2010				2011				2012			
						Qtr 4	Qtr 1	Qtr 2	Qtr 3	Qtr 4	Qtr 1	Qtr 2	Qtr 3	Qtr 4	Qtr 1	Qtr 2	Qtr 3	Qtr 4	Qtr 1	Qtr 2	Qtr 3	Qtr 4	Qtr 1	Qtr 2	Qtr 3
A4190	Install Fibre Optic Cables	17	06-Dec-11	11-Jan-12	118																				
A4179	Access to cable pits for cable laying (05C)	0	06-Dec-11		264																				
A4200	Install Signalling Wayside Equipment	17	12-Jan-12	03-Feb-12	101																				
Depot to Gogarburn		43	26-May-11	26-Jul-11	356																				
A16900	Access for visual inspection for E&M wayside installation (05C)	0	26-May-11		398																				
A16940	Access for visual inspection to cable pits for cable laying (05C)	0	03-Jun-11		393																				
5C-02-OHLE-50	Installation of poles and building fixings	5	28-Jun-11	04-Jul-11	25																				
A16910	Access for E&M wayside installation (05C)	0	28-Jun-11		377																				
5C-02-OHLE-60	Overhead Catenary Line	11	05-Jul-11	19-Jul-11	25																				
A16960	Install Electrical Cables	8	05-Jul-11	14-Jul-11	227																				
A16970	Install Fibre Optic Cables	8	05-Jul-11	14-Jul-11	235																				
A16950	Access to cable pits for cable laying (05C)	0	05-Jul-11		372																				
A16980	Install Signalling Wayside Equipment	8	15-Jul-11	26-Jul-11	227																				
Edinburgh Park (exc.) to Gyle Centre (inc.)		729	13-May-08 A	03-May-11	416																				
Trackwork (760m)		362	14-Jan-09 A	06-Aug-10	465																				
12950	Issue Construction Drawings	0		14-Jan-09 A																					
140	Earthworks and Subbase	20	11-Jan-10	05-Feb-10	16																				
183	OLE Foundations - Drainage	30	08-Feb-10	19-Mar-10	16																				
5C-06-TRCK-50	Track Formation and Ducts	16	22-Mar-10	13-Apr-10	16																				
5C-06-TRCK-80	Road Crossings	20	14-Apr-10	12-May-10	16																				
5C-06-TRCK-70	Track laying (760m)	20	13-May-10	10-Jun-10	16																				
799	Track Finishes	24	11-Jun-10	14-Jul-10	377																				
819	Fencing	16	15-Jul-10	06-Aug-10	465																				
Gyle Centre Tram Stop		644	11-Sep-08 A	03-May-11	416																				
12960	Issue Construction Drawings	0		11-Sep-08 A																					
141	Civil Engineering and Building Works	65	11-Jun-10	10-Sep-10	400																				
298	Order REC Supply	0	03-Dec-10		511																				
A5318	Access for visual inspection for E&M Tram Stop installation (05C Gyle)	0	12-Jan-11		507																				
A2170	Deliver and Install Shelter	10	28-Jan-11	11-Feb-11	287																				
A5320	Install LV Power Supply and LV Power Equipment	25	11-Feb-11	18-Mar-11	287																				
A5319	Access for E&M Tram Stop installation (05C Gyle)	0	11-Feb-11		302																				
A5330	Install Telecon Equipment	20	18-Mar-11	18-Apr-11	297																				
A5340	Install Station Control Equipment + AFC Equipment	25	18-Mar-11	25-Apr-11	287																				
A5350	Package Test Tramstop	5	25-Apr-11	03-May-11	287																				
Gyle Centre Tram Stop Retaining Wall (W16)		405	13-May-08 A	08-Jan-10	16																				
12970	Issue Construction Drawings	0		13-May-08 A																					
139	Wall Construction	20	27-Nov-09	08-Jan-10	16																				
Gyle Centre (exc.) to Depot Stop (inc.)		863	28-Jul-08 A	07-Feb-12	99																				
A8 Underpass (W28)		553	28-Jul-08 A	26-Oct-10	78																				
12980	Issue Construction Drawings	0		28-Jul-08 A																					
143	Phase 1	46	01-Sep-08 A	05-Feb-10	78																				
153	Working around BT ducts (dummy)	20	05-Feb-10	05-Mar-10	78																				

Date	Revision	Checked	Approved	Page 41 of 46	Rev 1 Baseline	Remaining Work	Rev 1 Baseline Milestone	Summary
24-Nov-09		SCS			Actual Work	Critical Remaining Work	Milestone	

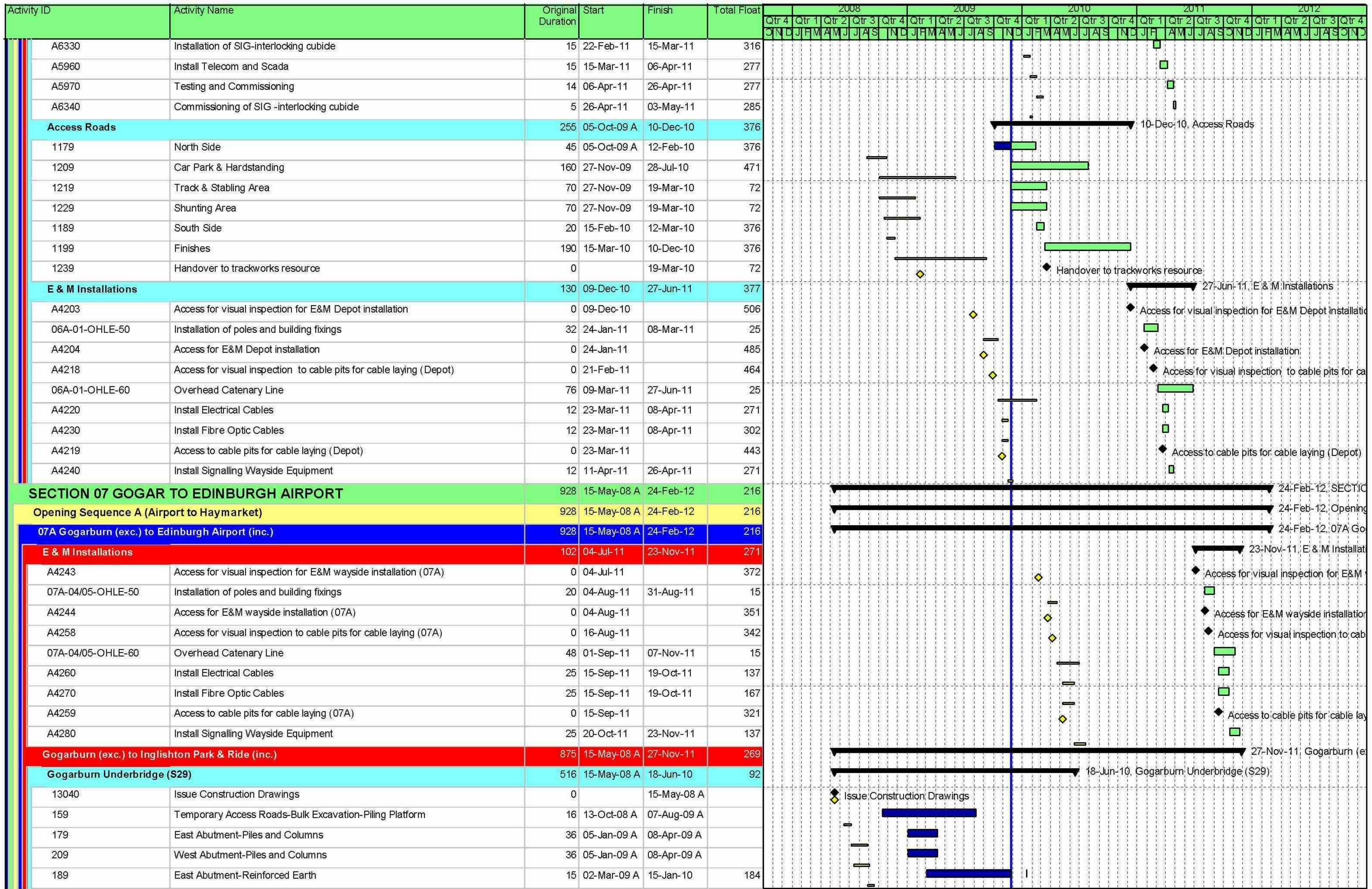
Activity ID	Activity Name	Original Duration	Start	Finish	Total Float	2008				2009				2010				2011				2012							
						Qtr 4	Qtr 1	Qtr 2	Qtr 3	Qtr 4	Qtr 1	Qtr 2	Qtr 3	Qtr 4	Qtr 1	Qtr 2	Qtr 3	Qtr 4	Qtr 1	Qtr 2	Qtr 3	Qtr 4	Qtr 1	Qtr 2	Qtr 3	Qtr 4	Qtr 1	Qtr 2	Qtr 3
						O	N	D	J	J	M	A	M	J	J	A	S	O	N	D	J	J	M	A	M	J	J	A	S
519	Phase 2	56	05-Mar-10	26-May-10	78																								
529	Phase 3	58	26-May-10	18-Aug-10	78																								
539	Phase 4	49	18-Aug-10	26-Oct-10	78																								
549	Subway Construction	49	18-Aug-10	26-Oct-10	78																								
Depot Access Bridge (S32)		619	07-Oct-08 A	21-Apr-11	78	21-Apr-11, Depot Access Bridge (S32)																							
12990	Issue Construction Drawings	0		07-Oct-08 A																									
144	Dummy	115	26-Oct-10	21-Apr-11	78																								
Trackwork (562m)		728	14-Jan-09 A	07-Feb-12	99	07-Feb-12, Trackwork																							
10590	Issue Construction Drawings	0		14-Jan-09 A																									
1069	Bulk Excavation	12	21-Apr-11	10-May-11	78																								
1079	Drainage and OLE Foundations	23	10-May-11	13-Jun-11	78																								
1089	Track Formation and Ducts	12	13-Jun-11	29-Jun-11	78																								
5C-03-TRCK-69	Track Laying Demob 1D/ Remob 5C	3	05-Oct-11	07-Oct-11	6																								
5C-03-TRCK-70	Track Laying (562m)	47	10-Oct-11	14-Dec-11	6																								
A2380	Track Finishes	18	15-Dec-11	23-Jan-12	6																								
A2390	Fencing and Reinstatements	11	24-Jan-12	07-Feb-12	99																								
A8 Retaining Walls (W16)		95	27-Nov-09	26-Apr-10	7	26-Apr-10, A8 Retaining Walls (W16)																							
145	Soil Nailing	95	27-Nov-09	26-Apr-10	7																								
Depot Stop (exc.) to Gogarburn (inc.)		541	14-Jan-10 A	18-Aug-11	341	18-Aug-11, Depot Stop (exc.) to G																							
Trackwork (562m)		465	14-Jan-10 A	28-Apr-11	288	28-Apr-11, Trackwork (562m)																							
13020	Issue Construction Drawings	0		14-Jan-10 A																									
148	Ramp Wall out of depot (details unknown)	30	27-Apr-10	09-Jun-10	117																								
288	Earthworks and Subbase	12	10-Jun-10	25-Jun-10	117																								
749	Drainage and OLE Foundations	23	28-Jun-10	28-Jul-10	117																								
759	Track Formation and Ducts	12	29-Jul-10	16-Aug-10	117																								
5C-02-TRCK-70	Track Laying (562m)	32	02-Feb-11	17-Mar-11	7																								
A2330	Track Finishes	18	18-Mar-11	13-Apr-11	76																								
A2340	Fencing and Reinstatements	11	14-Apr-11	28-Apr-11	288																								
Gogarburn Tram Stop		358	09-Mar-10	18-Aug-11	341	18-Aug-11, Gogarburn Tram Stop																							
13030	Issue Construction Drawings	0		09-Mar-10*	0																								
149	Civil Engineering and Building Works	65	11-Mar-11	14-Jun-11	217																								
308	Order REC Supply	0	04-Apr-11		436																								
A5358	Access for visual inspection for E&M Tram Stop installation (05C Gogarburn)	0	02-May-11		429																								
A2200	Deliver and Install Shelter	10	17-May-11	01-Jun-11	212																								
A5360	Install LV Power Supply and LV Power Equipment	25	01-Jun-11	06-Jul-11	212																								
A5359	Access for E&M Tram Stop installation (05C Gogarburn)	0	01-Jun-11		224																								
A5370	Install Telecon Equipment	20	06-Jul-11	04-Aug-11	222																								
A5380	Install Station Control Equipment + AFC Equipment	25	06-Jul-11	11-Aug-11	212																								
A5390	Package Test Tramstop	5	11-Aug-11	18-Aug-11	212																								
SECTION 06 GOGAR DEPOT		757	29-May-08 A	27-Jun-11	377	27-Jun-11, SECTION 06 GOGAR DEPOT																							
Opening Sequence A (Airport to Haymarket)		757	29-May-08 A	27-Jun-11	377	27-Jun-11, Opening Sequence A (Air																							
06A Gogar Depot		757	29-May-08 A	27-Jun-11	377	27-Jun-11, 06A Gogar Depot																							

Date	Revision	Checked	Approved	Page 42 of 46	Rev 1 Baseline	Remaining Work	Rev 1 Baseline Milestone	Milestone	Summary
24-Nov-09		SCS							

Activity ID	Activity Name	Original Duration	Start	Finish	Total Float	2008				2009				2010				2011				2012			
						Qtr 4	Qtr 1	Qtr 2	Qtr 3	Qtr 4	Qtr 1	Qtr 2	Qtr 3	Qtr 4	Qtr 1	Qtr 2	Qtr 3	Qtr 4	Qtr 1	Qtr 2	Qtr 3	Qtr 4	Qtr 1	Qtr 2	Qtr 3
Depot						27-Jun-11, Depot																			
Earthworks						06-Apr-10, Earthworks																			
13130	Issue Construction Drawings Earthworks	0	29-May-08 A			Issue Construction Drawings Earthworks																			
1148	Excavate and Dispose of additional earthworks	85	07-Apr-09 A	29-May-09 A																					
1149	Earth Works	95	29-May-09 A	01-Feb-10	7																				
1289	Drainage and Outfall	90	14-Sep-09 A	06-Apr-10	21																				
13140	Issue Construction Drawings Drainage	0	14-Sep-09 A			Issue Construction Drawings Drainage																			
Trackwork (3492m)						21-Jan-11, Trackwork (3492m)																			
154	Trackwork	180	27-Apr-10	21-Jan-11	7																				
6A-01-TRCK-70	Track Laying Ballast Track	100	24-Jun-10	11-Nov-10	7																				
6A-01B-TRCK-70	Track Laying Column Track	10	26-Oct-10	08-Nov-10	36																				
6A-01A-TRCK-69	Track Laying Demob 1D / Remob 6A	3	01-Nov-10	03-Nov-10	26																				
6A-01A-TRCK-70	Track Laying Ballast Track & Embedded Track	43	04-Nov-10	18-Jan-11	26																				
6A-01C-TRCK-70	Track Laying Finishing	17	09-Nov-10	02-Dec-10	36																				
Depot Building						20-Jun-11, Depot Building																			
A17170	Foundations	55	31-Aug-09 A	07-Dec-09	260																				
A17180	Substructure and Superstructure (Steelwork)	50	05-Oct-09 A	02-Dec-09	339																				
A17200	Substructure and Superstructure	60	09-Nov-09 A	17-Feb-10	293																				
A17210	Building Envelope	90	16-Nov-09 A	15-Apr-10	254																				
A17190	Pits	40	27-Nov-09	05-Feb-10	301																				
Procurement						08-Dec-09, Procurement																			
1159	Steel Work Fabrication	64	01-Jul-08 A	08-Dec-09	254																				
1158	Issue Construction Drawings	0	07-Jul-08 A			Issue Construction Drawings																			
Building Services						02-Nov-10, Building Services																			
1249	Building Services Installation	140	17-Mar-10	05-Oct-10	254																				
1259	Building Services Commissioning	130	29-Apr-10	02-Nov-10	254																				
Fitting Out & Finishes						02-Nov-10, Fitting Out & Finishes																			
1269	Fitting out and Finishes	160	17-Mar-10	02-Nov-10	254																				
E & M Workshop Equipment Installation						20-May-11, E & M Workshop Equipment																			
A2542	Access for visual inspection for E&M workshop equipment	0	04-Oct-10		580	Access for visual inspection for E&M workshop equipment																			
A2545	Installation of workshop equipment	130	02-Nov-10	20-May-11	254																				
A2544	Access for E&M workshop equipment	0	02-Nov-10		559	Access for E&M workshop equipment																			
Inspection & Handover						20-Jun-11, Inspection & Handover																			
A2550	Inspection and Testing	20	20-May-11	20-Jun-11	254																				
Depot Substation						03-May-11, Depot Substation																			
316	Civil Engineering and Building Works	140	27-Nov-09	30-Jun-10	447																				
306	Order REC supply from Scottish Power	0	08-Mar-10		447	Order REC supply from Scottish Power																			
A2518	Access for visual inspection for E&M Substation installation (06A Depot)	0	01-Jun-10		668	Access for visual inspection for E&M Substation installation (06A D																			
A5930	Power Infeed from Public Net available inc HV cable	0	01-Jul-10		447	Power Infeed from Public Net available inc HV cable																			
A2519	Access for E&M Substation installation (06A Depot)	0	01-Jul-10		474	Access for E&M Substation installation (06A Depot)																			
A5940	Install LV Power Supply and LV Power Equipment	15	08-Feb-11	01-Mar-11	301																				
A5950	Installation of TPS Equipment	30	22-Feb-11	06-Apr-11	277																				

Date	Revision	Checked	Approved	Page 43 of 46	Rev 1 Baseline	Remaining Work	Rev 1 Baseline Milestone	Summary
24-Nov-09		SCS			Actual Work	Critical Remaining Work	Milestone	

CEC00624424_0101



Date	Revision	Checked	Approved	Page 44 of 46	Rev 1 Baseline	Remaining Work	Rev 1 Baseline Milestone	Summary
24-Nov-09		SCS			Actual Work	Critical Remaining Work	Milestone	

CEC00624424_0102

Activity ID	Activity Name	Original Duration	Start	Finish	Total Float	2008				2009				2010				2011				2012							
						Qtr 4	Qtr 1	Qtr 2	Qtr 3	Qtr 4	Qtr 1	Qtr 2	Qtr 3	Qtr 4	Qtr 1	Qtr 2	Qtr 3	Qtr 4	Qtr 1	Qtr 2	Qtr 3	Qtr 4	Qtr 1	Qtr 2	Qtr 3	Qtr 4	Qtr 1	Qtr 2	Qtr 3
						O	N	D	J	J	M	A	M	J	J	A	S	O	N	D	J	J	M	A	M	J	J	A	S
219	West Abutment-Reinforced Earth	15	02-Mar-09 A	18-Jan-10	184																								
239	Bridge Deck	41	24-Aug-09 A	13-Nov-09 A																									
199	East Abutment-Parapets and Run on Slabs	29	29-Oct-09 A	05-Feb-10	184																								
229	West Abutment-Parapets and Run on Slabs	29	29-Oct-09 A	05-Feb-10	184																								
13041	Treat area of contaminated land (Dummy duration)	130	18-Dec-09	18-Jun-10	93																								
Gogarburn Culvert No1 (S30)		313	17-Sep-08 A	30-Oct-09 A																									
13050	Issue Construction Drawings	0	17-Sep-08 A																										
160	Temporary Access Roads-Divert Flows-Bulk Excavation	19	24-Aug-09 A	30-Oct-09 A																									
249	Precast Culvert Units	5	24-Aug-09 A	02-Oct-09 A																									
259	Reinforced Concrete Apron and Wingwalls	20	02-Oct-09 A	30-Oct-09 A																									
269	Backfill and Finishes	11	02-Oct-09 A	30-Oct-09 A																									
Trackwork (1750m)		632	14-Jan-09 A	09-Sep-11	181																								
13060	Issue Construction Drawings	0	14-Jan-09 A																										
162	Earthworks and Subbase	27	21-Jun-10	27-Jul-10	92																								
399	Drainage and OLE Foundations	35	28-Jul-10	15-Sep-10	92																								
409	Bottom Balast and Ducts	35	16-Sep-10	03-Nov-10	92																								
7A-04-TRCK-70	Track Laying (1750m)	65	18-Mar-11	21-Jun-11	7																								
A1990	Top Ballast	22	22-Jun-11	21-Jul-11	181																								
A2020	Fencing & Trackside Finishes	35	22-Jul-11	09-Sep-11	181																								
Ingliston Park and Ride Tram Stop		665	25-Feb-09 A	27-Oct-11	291																								
13070	Issue Construction Drawings	0	25-Feb-09 A																										
163	Civil Engineering and Building Works	65	25-Mar-11	28-Jun-11	207																								
218	Order REC Supply	0	15-Jun-11		386																								
A5398	Access for visual inspection for E&M Tram Stop installation (07A Ingliston Park	0	12-Jul-11		379																								
A1940	Deliver and Install Shelter	10	27-Jul-11	11-Aug-11	162																								
A5400	Install LV Power Supply and LV Power Equipment	25	11-Aug-11	15-Sep-11	162																								
A5399	Access for E&M Tram Stop installation (07A Ingliston Park+Ride)	0	11-Aug-11		173																								
A5410	Install Telecom Equipment	20	15-Sep-11	13-Oct-11	172																								
A5420	Install Station Control Equipment + AFC Equipment	25	15-Sep-11	20-Oct-11	162																								
A5430	Package Test Tramstop	5	20-Oct-11	27-Oct-11	162																								
Ingliston Park and Ride Substation		95	04-Mar-11	20-Jul-11	361																								
216	Order REC supply from Scottish Power	0	04-Mar-11		361																								
226	Civil Engineering and Building Works	65	25-Mar-11	28-Jun-11	361																								
A6000	Installation of TPS Equipment	30	06-Apr-11	19-May-11	261																								
A6010	Install Telecom and Scada	15	27-Apr-11	19-May-11	261																								
A6020	Testing and Commissioning	14	19-May-11	09-Jun-11	261																								
A1968	Access for visual inspection for E&M Substation installation (07A Ingliston Park	0	30-May-11		409																								
A5980	Power Infeed from Public Net available inc HV cable	0	29-Jun-11		361																								
A5990	Install LV Power Supply and LV Power Equipment	15	29-Jun-11	20-Jul-11	361																								
A1969	Access for E&M Substation installation (07A Ingliston Park and Ride)	0	29-Jun-11		373																								
Enabling Works		28	01-Dec-08 A	14-Jan-10	184																								
A2000	Site and Vegetation Clearance	28	01-Dec-08 A	14-Jan-10	184																								

Date	Revision	Checked	Approved	Page 45 of 46	Rev 1 Baseline	Remaining Work	Rev 1 Baseline Milestone	Summary
24-Nov-09		SCS			Actual Work	Critical Remaining Work	Milestone	

CEC00624424_0103

Activity ID	Activity Name	Original Duration	Start	Finish	Total Float	2008												2009												2010												2011												2012											
						Qtr 4			Qtr 1			Qtr 2			Qtr 3			Qtr 4			Qtr 1			Qtr 2			Qtr 3			Qtr 4			Qtr 1			Qtr 2			Qtr 3			Qtr 4			Qtr 1			Qtr 2			Qtr 3			Qtr 4											
						O	N	D	J	F	M	A	M	J	J	A	S	N	D	J	F	M	A	M	J	J	A	S	N	D	J	F	M	A	M	J	J	A	S	N	D	J	F	M	A	M	J	J	A	S	N														
Tram						27-Nov-11, Tram																																																											
A6380	Track Testing of Tram	20	07-Nov-11	27-Nov-11	211																																																												
Ingliston Park & Ride (exc.) to Edinburgh Airport (inc.)						24-Feb-12, Ingliston																																																											
Enabling Works						20-Jan-10, Enabling Works																																																											
A1920	Construct New Hotel Car Park	20	02-Nov-09 A	27-Nov-09	241																																																												
A1930	Site and Vegetation Clearance	28	27-Nov-09	20-Jan-10	214																																																												
Gogarburn Retaining Wall (W14)						14-May-10, Gogarburn Retaining Wall (W14)																																																											
13080	Issue Construction Drawings	0	26-Feb-09 A																																																														
167	Gogarburn Retaining Wall (W14)	80	21-Jan-10	14-May-10	214																																																												
Gogarburn Culvert No2 (S31)						30-Oct-09 A, Gogarburn Culvert No2 (S31)																																																											
13090	Issue Construction Drawings	0	17-Sep-08 A																																																														
165	Divert Flows-Bulk Excavation	7	05-Jan-09 A	09-Jan-09 A																																																													
309	Precast Culvert Units	5	12-Jan-09 A	30-Oct-09 A																																																													
319	Reinforced Concrete Apron and Wingwalls	20	02-Oct-09 A	30-Oct-09 A																																																													
329	Backfill and Finishes	11	02-Oct-09 A	30-Oct-09 A																																																													
Gogarburn Culvert No3 (S34)						30-Oct-09 A, Gogarburn Culvert No3 (S34)																																																											
13100	Issue Construction Drawings	0	10-Sep-08 A																																																														
196	Divert Flows-Bulk Excavation	6	02-Oct-09 A	30-Oct-09 A																																																													
279	Precast Culvert Units	5	02-Oct-09 A	30-Oct-09 A																																																													
289	Reinforced Concrete Apron and Wingwalls	20	02-Oct-09 A	30-Oct-09 A																																																													
299	Backfill and Finishes	11	02-Oct-09 A	30-Oct-09 A																																																													
Trackwork (833m)						09-Sep-11, Trackwork (833m)																																																											
13110	Issue Construction Drawings	0	14-Jan-09 A																																																														
168	Earthworks and Subbase	15	04-Nov-10	24-Nov-10	93																																																												
369	Drainage and OLE Foundations	33	25-Nov-10	25-Jan-11	93																																																												
379	Bottom Ballast and Ducts	16	26-Jan-11	16-Feb-11	93																																																												
7A-05-TRCK-70	Track Laying (833m)	30	22-Jun-11	03-Aug-11	7																																																												
A1910	Top Ballast	10	04-Aug-11	17-Aug-11	195																																																												
A2350	Fencing & Trackside Finishes	17	18-Aug-11	09-Sep-11	195																																																												
Edinburgh Airport Tram Stop						24-Feb-12, Edinburgh																																																											
13120	Issue Construction Drawings	0	24-Mar-09 A																																																														
169	Civil Engineering and Building Works	65	04-Aug-11	02-Nov-11	117																																																												
208	Order REC Supply	0	29-Sep-11		311																																																												
A5438	Access for visual inspection for E&M Tram Stop installation (07A Edingburgh A	0	25-Oct-11		303																																																												
A1880	Deliver and Install Shelter	10	10-Nov-11	24-Nov-11	87																																																												
A5440	Install LV Power Supply and LV Power Equipment	25	24-Nov-11	13-Jan-12	87																																																												
A5439	Access for E&M Tram Stop installation (07A Edingburgh Airport)	0	24-Nov-11		98																																																												
A6360	Installation of SIG-interlocking cubide	10	09-Dec-11	23-Dec-11	127																																																												
A6370	Commissioning of SIG -interlocking cubide	5	23-Dec-11	30-Dec-11	127																																																												
A5450	Install Telecon Equipment	20	13-Jan-12	10-Feb-12	97																																																												
A5460	Install Station Control Equipment + AFC Equipment	25	13-Jan-12	17-Feb-12	87																																																												
A5470	Package Test Tramstop	5	17-Feb-12	24-Feb-12	87																																																												

Date	Revision	Checked	Approved	Page 46 of 46	Rev 1 Baseline	Remaining Work	Rev 1 Baseline Milestone	Milestone	Summary
24-Nov-09		SCS							

CEC00624424_0104

10.3 Look Ahead Programme

Three Month Look-Ahead Programme

December 2009 - February 2010

EDINBURGH TRAM NETWORK



Activity ID	Activity Name	Original Duration	Activity % Complete	Start	Finish	2009						2010									
						December		January		February		March									
						23	30	07	14	21	28	04	11	18	25	01	08	15	22	01	
Edinburgh Tram - Construction Programme 02 Rev.-																					
SECTION 01 NEWHAVEN ROAD TO HAYMARKET																					
01A Newhaven Road (inc.) to Foot of the Walk (exc.)																					
Design Stage Consents																					
A17260	Forth Ports Agreement	100	99%	28-Sep-07 A	27-Nov-09																
MJDA & Utilities Completion Dates																					
A1000	Newhaven Road to Ocean Terminal	1	0%	16-Nov-09 A	27-Nov-09*																
A1010	Ocean Terminal to Port of Leith	1	0%	16-Nov-09 A	27-Nov-09*																
A1020	Port of Leith to Bernard Road	0	0%		27-Nov-09*																
A1030	Bernard Road to Foot of the Walk	0	0%		27-Nov-09*																
A1080	Assumed delay awaiting Utilities diversions	55	0%	27-Nov-09	26-Feb-10																
Utilities Works by Others																					
12330	Permanent Diversion of Services (by Others)(est)	55	0%	27-Nov-09*	26-Feb-10																
Newhaven Road (inc.) to Ocean Terminal (exc.)																					
Design																					
1A-24-ROAD-30	Re-Issue Construction Drawings - Roadworks	0	0%	07-Jan-10*	28-Jan-10																
1A-24-ROAD-40	Hawthorne Vale Cycleway	1	0%		26-Jan-10*																
1A-24-TRMS-100	Re-Issue Construction Drawings - Newhaven Road Tramstop incl equip	0	0%		28-Jan-10*																
Lindsay Road Retaining Walls																					
1A-24-CHGE-10	Agreement of Change (BDDI-IFC) - LR W1A	0	0%	27-Nov-09*	27-Nov-09																
Roadworks																					
1A-24-CHGE-60	Agreement of Change (BDDI-IFC) - Roadwork	0	0%	27-Nov-09*	27-Nov-09																
Trackwork																					
1A-24-CHGE-30	Agreement of Change (BDDI-IFC) - Trackwork	0	0%	27-Nov-09*	27-Nov-09																
Ocean Terminal (inc.) to Port of Leith (exc.)																					
Design																					
1A-23-APPR-10	Scottish Water Outfall Consent	0	0%	03-Dec-09	03-Dec-09*																
1A-23-ROAD-10	Issue Construction Drawings - Roadworks (West of Tower Br)	0	0%		12-Feb-10*																
1A-23-ROAD-30	Re-Issue Construction Drawings - Roadworks (East of Tower Br)	0	0%		05-Jan-10*																
1A-23-TRMS-10	Issue Construction Drawings - Ocean Terminal Tramstop	0	0%		10-Feb-10*																
1A-23C-TRCK-60	Issue Construction Drawings - S16 Trackform	0	0%		10-Feb-10*																
1A-23C-TRCK-90	Issue Construction Drawings - S17 Trackform	0	0%		10-Feb-10*																
Roadworks																					
1A-24-CHGE-70	Agreement of Change (BDDI-IFC) - Roadwork	0	0%	27-Nov-09*	27-Nov-09																
Ocean Terminal Bypass Road																					
A20780	Provisional	100	0%	11-Jan-10	02-Jun-10																
Trackwork																					
1A-24-CHGE-40	Agreement of Change (BDDI-IFC) - Trackwork	0	0%	27-Nov-09*	27-Nov-09																
S16 - Victoria Dock Entrance Bridge																					

Date	Revision	Checked	Approved
27-Nov-09	Construction Programme Updated V51 & Progress	JAC	

Actual Work
 % Complete
 Normal
 WBS Summary Activity
 Milestone

"This programme is provided for information and coordination purposes only; and without prejudice to the rights of the Infraco under the Agreement. This programme constitutes a target programme and as such, contains durations that are based on a risk profile not consistent with the Accepted Programme."

CEC00624424_0106

Three Month Look-Ahead Programme

December 2009 - February 2010

EDINBURGH TRAM NETWORK



Activity ID	Activity Name	Original Duration	Activity % Complete	Start	Finish	2009												2010											
						December						January						February						March					
						23	30	07	14	21	28	04	11	18	25	01	08	15	22	01	08	15	22						
1A-24-CHGE-150	Agreement of Change (BDDI-IFC) - S16 Victoria Dock Entrance Bridge	0	0%	27-Nov-09*	27-Nov-09	Agreement of Change (BDDI-IFC) - S16 Victoria Dock Entrance Bridge																							
S17 - Tower Place Bridge																													
1A-23-S17-31	Temporary Platforms and Demolition	60	0%	12-Jan-10*	06-Apr-10	1A-23-S17-31																							
1A-24-CHGE-20	Agreement of Change (BDDI-IFC) - S17 Tower Place Bridge	0	0%	27-Nov-09*	27-Nov-09	Agreement of Change (BDDI-IFC) - S17 Tower Place Bridge																							
Port of Leith (inc.) to Bernard Street (exc.)																													
Design																													
1A-22-ROAD-30	Re-Issue Construction Drawings - Roadworks	0	0%		05-Jan-10*	1A-22-ROAD-30 ♦ Re-Issue Construction Drawings - Roadworks																							
1A-22-TRMS-100	Re-Issue Construction Drawings - Port of Leith Tramstop incl equip	0	0%		20-Jan-10*	1A-22-TRMS-100 ♦ Re-Issue Construction Drawings - Port of Leith Tramstop incl equip																							
Roadworks																													
1A-24-CHGE-80	Agreement of Change (BDDI-IFC) - Roadwork	0	0%	27-Nov-09*	27-Nov-09	Agreement of Change (BDDI-IFC) - Roadwork																							
Trackworks																													
1A-24-CHGE-90	Agreement of Change (BDDI-IFC) - Trackwork	0	0%	27-Nov-09*	27-Nov-09	Agreement of Change (BDDI-IFC) - Trackwork																							
Bernard Street (inc.) to Foot of the Walk (Ch.000)																													
Design																													
1A-21-ROAD-30	Re-Issue Construction Drawings - Roadwork	0	0%		05-Jan-10*	1A-21-ROAD-30 ♦ Re-Issue Construction Drawings - Roadwork																							
1A-21-TRMS-100	Re-Issue Construction Drawings - Bernard Street Tramstop incl equip	0	0%		15-Jan-10*	1A-21-TRMS-100 ♦ Re-Issue Construction Drawings - Bernard Street Tramstop incl equip																							
1A-21-TRMS-21	Re-Issue Construction Drawings - Foot of The Walk Tramstop incl equip	0	0%		12-Jan-10*	1A-21-TRMS-21 ♦ Re-Issue Construction Drawings - Foot of The Walk Tramstop incl equip																							
Roadworks																													
1A-24-CHGE-100	Agreement of Change (BDDI-IFC) - Roadwork	0	0%	27-Nov-09*	27-Nov-09	Agreement of Change (BDDI-IFC) - Roadwork																							
Trackworks																													
1A-24-CHGE-110	Agreement of Change (BDDI-IFC) - Trackwork	0	0%	27-Nov-09*	27-Nov-09	Agreement of Change (BDDI-IFC) - Trackwork																							
01B Foot of the Walk (Ch.000) to McDonald Road (exc.)																													
MJDF&A & Utilities Completions																													
A20040	Foot of the Walk to Balfour Street	0	0%	01-Dec-09	01-Dec-09	A20040 ♦ Foot of the Walk to Balfour Street																							
A20050	Balfour Street to McDonald Road	0	0%	01-Dec-09	01-Dec-09	A20050 ♦ Balfour Street to McDonald Road																							
Foot of the walk (Ch.000) to Balfour Street (exc.)																													
Roadworks																													
1A-24-CHGE-120	Agreement of Change (BDDI-IFC) - Roadwork	0	0%	27-Nov-09*	27-Nov-09	Agreement of Change (BDDI-IFC) - Roadwork																							
B01270	Works in Leith Walk suspended until access issues resolved	121	89%	10-Mar-09 A	18-Dec-09	Works in Leith Walk suspended until access issues resolved																							
B25410	Re-mobilise Works	5	0%	04-Jan-10*	08-Jan-10	B25410 Re-mobilise Works																							
Leith Walk Ch.080-350																													
North																													
1B-20D-ROAD-21	Remove fencing and Traffic Management	1	0%	29-Jan-10	01-Feb-10	1B-20D-ROAD-21 Remove fencing and Traffic Management																							
1B-20D-ROAD-31	Excavate for road reconstruction	3	0%	12-Jan-10	15-Jan-10	1B-20D-ROAD-31 Excavate for road reconstruction																							
1B-20D-ROAD-40	Construct Kerb lines	7	95%	30-Oct-08 A	15-Jan-10	Construct Kerb lines																							
1B-20D-ROAD-50	Reset Gullies	7	95%	17-Nov-08 A	15-Jan-10	Reset Gullies																							
1B-20D-ROAD-60	Sub base	3	0%	15-Jan-10	20-Jan-10	1B-20D-ROAD-60 Sub base																							
1B-20D-ROAD-61	Road Surfacing	5	0%	20-Jan-10	27-Jan-10	1B-20D-ROAD-61 Road Surfacing																							
1B-20D-ROAD-70	Pavement Works	7	0%	15-Jan-10	26-Jan-10	1B-20D-ROAD-70 Pavement Works																							

Date	Revision	Checked	Approved
27-Nov-09	Construction Programme Updated V51 & Progress	JAC	

Actual Work
 % Complete
 WBS Summary Activity
 Milestone

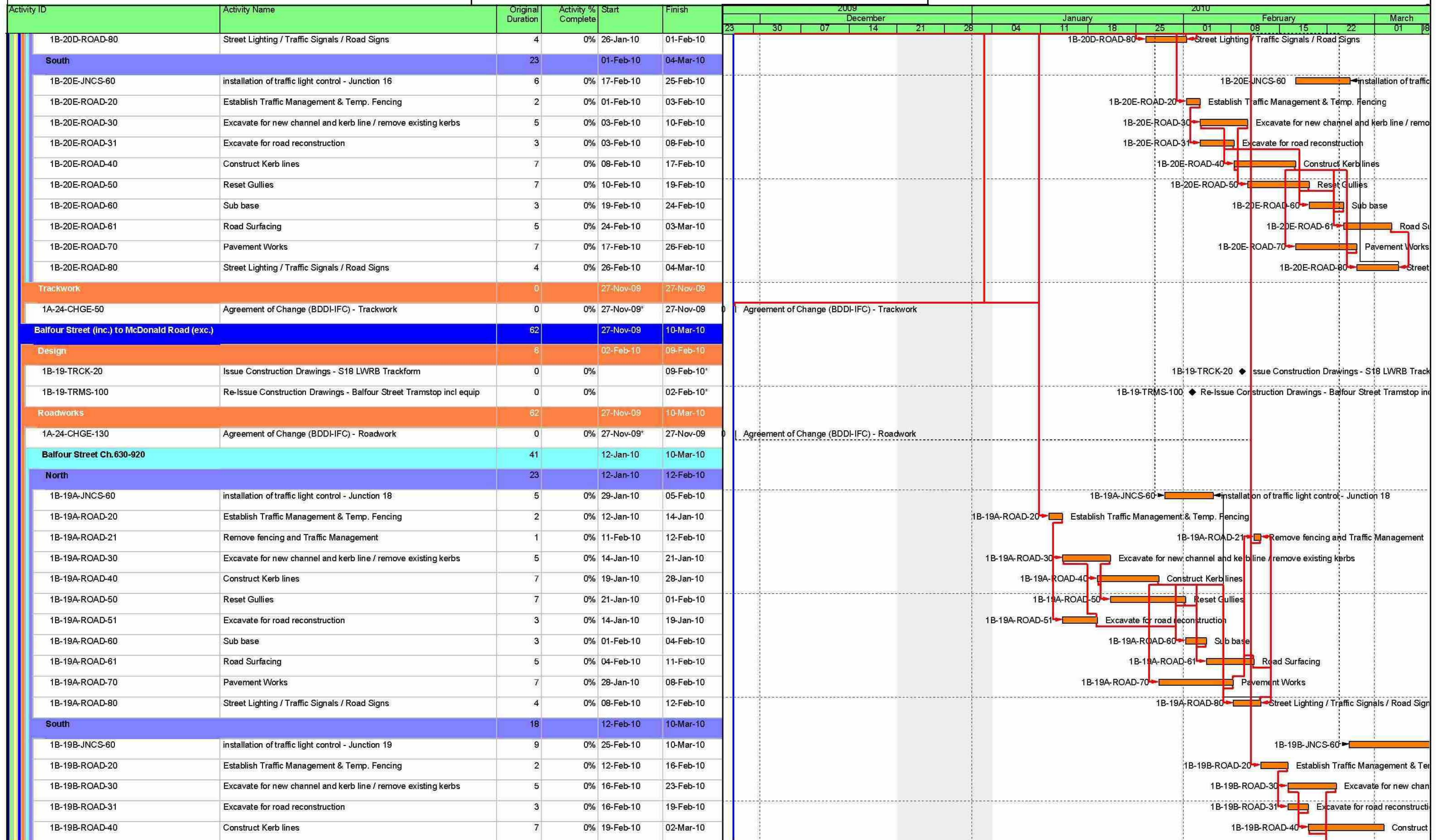
"This programme is provided for information and coordination purposes only; and without prejudice to the rights of the Infraco under the Agreement. This programme constitutes a target programme and as such, contains durations that are based on a risk profile not consistent with the Accepted Programme."

CEC00624424_0107

Three Month Look-Ahead Programme

December 2009 - February 2010

EDINBURGH TRAM NETWORK



Date	Revision	Checked	Approved
27-Nov-09	Construction Programme Updated V51 & Progress	JAC	

Page 3 of 21

- Actual Work
- % Complete
- Normal
- WBS Summary Activity
- Milestone

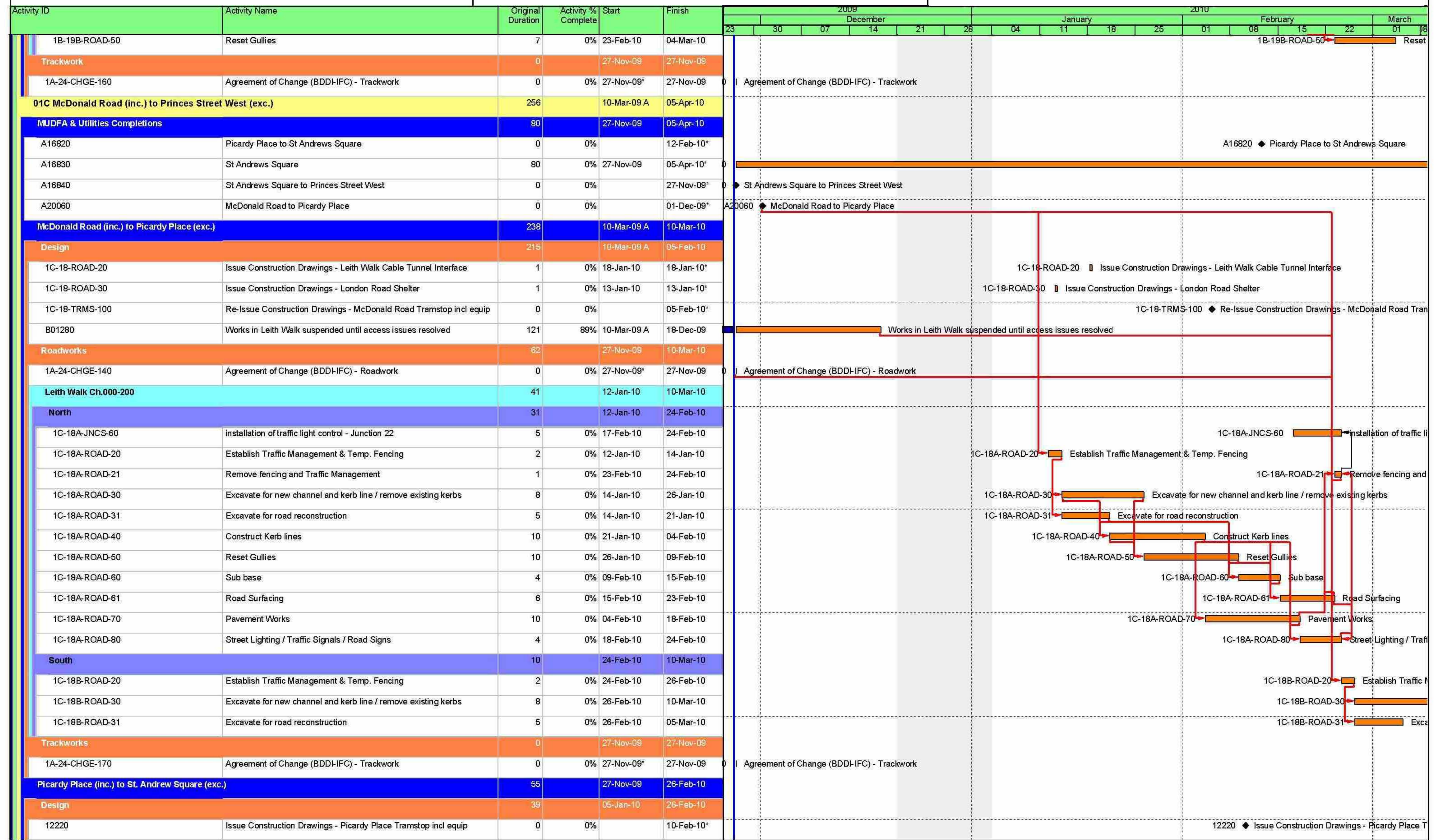
"This programme is provided for information and coordination purposes only; and without prejudice to the rights of the Infraco under the Agreement. This programme constitutes a target programme and as such, contains durations that are based on a risk profile not consistent with the Accepted Programme."

CEC00624424_0108

Three Month Look-Ahead Programme

December 2009 - February 2010

EDINBURGH TRAM NETWORK



Date	Revision	Checked	Approved
27-Nov-09	Construction Programme Updated V51 & Progress	JAC	

- Actual Work
- Normal
- WBS Summary Activity
- Milestone
- % Complete

"This programme is provided for information and coordination purposes only; and without prejudice to the rights of the Infraco under the Agreement. This programme constitutes a target programme and as such, contains durations that are based on a risk profile not consistent with the Accepted Programme."

CEC00624424_0109

Three Month Look-Ahead Programme

December 2009 - February 2010

EDINBURGH TRAM NETWORK



Activity ID	Activity Name	Original Duration	Activity % Complete	Start	Finish	2009												2010													
						December						January						February						March							
12230	Issue Construction Drawings - Roadworks	0	0%	05-Jan-10*												12230	◆	Issue Construction Drawings - Roadworks													
1C-18-ROAD-40	Issue Construction Drawings - Playhouse Interface	1	0%	20-Jan-10	20-Jan-10*													1C-18-ROAD-40	■	Issue Construction Drawings - Playhouse Interface											
1C-18-ROAD-60	Issue Construction Drawings - Picardy Place Widened Footway Re-Design	1	0%	26-Feb-10	26-Feb-10*															1C-18-ROAD-60	■	Issue Construction Drawings - Picardy Place Widened Footway Re-Design									
Roadworks																															
1A-24-CHGE-180	Agreement of Change (BDDH-IFC) - Roadwork	0	0%	27-Nov-09*	27-Nov-09															1A-24-CHGE-180	■	Agreement of Change (BDDH-IFC) - Roadwork									
Trackworks																															
1A-24-CHGE-190	Agreement of Change (BDDH-IFC) - Trackwork	0	0%	27-Nov-09*	27-Nov-09															1A-24-CHGE-190	■	Agreement of Change (BDDH-IFC) - Trackwork									
St. Andrew Square (inc.) to Princes Street West (exc.)																															
St. Andrew Square																															
Roadworks																															
1A-24-CHGE-200	Agreement of Change (BDDH-IFC) - Roadwork	0	0%	27-Nov-09*	27-Nov-09															1A-24-CHGE-200	■	Agreement of Change (BDDH-IFC) - Roadwork									
Princes Street																															
1C-34-ROAD-1160	Establish Traffic Management & Temporary Fencing	2	0%	08-Jan-10	12-Jan-10															1C-34-ROAD-1160	■	Establish Traffic Management & Temporary Fencing									
Trackwork																															
1A-24-CHGE-210	Agreement of Change (BDDH-IFC) - Trackwork	0	0%	27-Nov-09*	27-Nov-09															1A-24-CHGE-210	■	Agreement of Change (BDDH-IFC) - Trackwork									
01D Princes Street (inc) to Haymarket (exc)																															
A20800	Agreement of Change (Haymarket)	0	0%	27-Nov-09	27-Nov-09*															A20800	■	Agreement of Change (Haymarket)									
Princes St - Section 1C (Waverley Bridge) to Section 1D (Lothian Road)																															
Design																															
48	Issue for Construction Drawings for Crawley Tunnel Mods	0	0%		18-Dec-09*															48	◆	Issue for Construction Drawings for Crawley Tunnel Mods									
58	Issue for Construction Drawings for Princes St. Tram Stop (V42)	0	0%		03-Feb-10*															58	◆	Issue for Construction Drawings for Princes St. Tram Stop									
Princes St 1D Ch.380-000 & 1C Ch.1,980-1,360																															
139	Lothian Rd / Princes St - Eastbound Side 1D C.130+310-130+220 and Westbound Side Ch.130+380-130+220	80	90%	09-Aug-09 A	10-Jan-10															139	■	Lothian Rd / Princes St - Eastbound Side 1D C.130+310-130+220 and Westbound Side Ch.130+380-130+220									
89	The Mound / Princes St 1C Ch.121+750-121+600 Eastbound and Ch.121+750-121+550	216	95%	31-Jan-09 A	15-Jan-10															89	■	The Mound / Princes St 1C Ch.121+750-121+600 Eastbound and Ch.121+750-121+550									
Princes Street West Tram Stop																															
1C-15A-TRMS-20	Order REC Supply	0	0%	19-Feb-10																1C-15A-TRMS-20	◆	Order REC Supply									
321	Tramstop Platform incl related cubicle foundations	17	75%	05-Oct-09 A	25-Jan-10															321	■	Tramstop Platform incl related cubicle foundations									
E & M Installation																															
1D-15-OHLE-30	Access for visual inspection for E&M wayside installation PST - SHP	0	0%	09-Feb-10																1D-15-OHLE-30	◆	Access for visual inspection for E&M wayside installation PST - SHP									
Haymarket Junction - Section 1D Ch.131,070 to Section 2A Ch.200,030																															
758	Enabling Works - Haymarket Junction	21	0%	27-Nov-09	11-Jan-10															758	■	Enabling Works - Haymarket Junction									
759	Enabling Works - Shandwick Place	10	0%	11-Jan-10*	22-Jan-10															759	■	Enabling Works - Shandwick Place									
774	Dilapidation Survey	2	0%	14-Jan-10	15-Jan-10															774	■	Dilapidation Survey									
Key Dates																															
2653	MUDFA Works Estimated Completion at Shandwick Place	0	0%	27-Nov-09*																2653	◆	MUDFA Works Estimated Completion at Shandwick Place									
708	Roadworks Commence - Shandwick Place	0	0%	01-Feb-10																708	◆	Roadworks Commence - Shandwick Place									
714	Enabling Works Commence - Haymarket	0	0%	27-Nov-09																714	◆	Enabling Works Commence - Haymarket									
715	Roadworks Commence - Haymarket	0	0%	14-Jan-10																715	◆	Roadworks Commence - Haymarket									
717	Enabling Works Commence - Shandwick Place (after Prince St Completion)	0	0%	18-Jan-10																717	◆	Enabling Works Commence - Shandwick Place (after Prince St Completion)									

Date	Revision	Checked	Approved
27-Nov-09	Construction Programme Updated V51 & Progress	JAC	

Page 5 of 21

Actual Work
 Normal
 WBS Summary Activity
 % Complete
◆ Milestone

"This programme is provided for information and coordination purposes only; and without prejudice to the rights of the Infracore under the Agreement. This programme constitutes a target programme and as such, contains durations that are based on a risk profile not consistent with the Accepted Programme."

CEC00624424_0110

Three Month Look-Ahead Programme

December 2009 - February 2010

EDINBURGH TRAM NETWORK



Activity ID	Activity Name	Original Duration	Activity % Complete	Start	Finish	2009												2010											
						December				January				February				March				April				May			
723	MUDFA Works Estimated Completion at Haymarket	0	0%	27-Nov-09*		MUDFA Works Estimated Completion at Haymarket																							
Consents																													
454	TTRO Approval - Enabling Works	30	0%	27-Nov-09	05-Feb-10	TTRO Approval - Enabling Works																							
473	TTRO Full Scheme for Haymarket / Shandwick Place - Final Review	0	0%	14-Dec-09		473 TTRO Full Scheme for Haymarket / Shandwick Place - Final Review																							
502	TTRO Submission - Enabling Works - Haymarket Junction	40	0%	27-Nov-09	05-Feb-10	TTRO Submission - Enabling Works - Haymarket Junction																							
Design																													
397	Track Alignment Revision (Section 1D SDS V41) from RSA	0	0%	27-Nov-09*		Track Alignment Revision (Section 1D SDS V41) from RSA																							
438	Re-Issue for Construction Drawings for Shandwick Place Tram Stop incl equip	0	0%		08-Feb-10*	438 Re-Issue for Construction Drawings for Shandwick Place Tram Stop incl equip																							
Procurement																													
Shandwick Place Tramstop																													
393	Order REC Supply	0	0%	04-Jan-10*		393 Order REC Supply																							
412	Tramstop Shelter	100	0%	04-Jan-10*	25-May-10	412 Tramstop Shelter																							
Documentation																													
416	Notification to all Stakeholders	0	0%	08-Feb-10		416 Notification to all Stakeholders																							
Civils Works Package Plan																													
308	Prepare WPP	10	0%	27-Nov-09	11-Dec-09	308 Prepare WPP																							
309	Submit WPP to Client	0	0%	27-Nov-09		309 Submit WPP to Client																							
Track (Siemens) Works Package Plan																													
391	Prepare WPP	10	0%	10-Dec-09	07-Jan-10	391 Prepare WPP																							
402	Submit WPP to Client	0	0%	07-Jan-10		402 Submit WPP to Client																							
Utilities / Stakeholders / Third Parties																													
Utilities																													
746	Check Change Register for any impact	0	0%	27-Nov-09		746 Check Change Register for any impact																							
747	Investigate Services	10	0%	27-Nov-09	11-Dec-09	747 Investigate Services																							
Traffic Management																													
751	Phase 1 (Main Area - Eastbound Side)	3	0%	11-Jan-10	13-Jan-10	751 Phase 1 (Main Area - Eastbound Side)																							
762	Princes Street Works Complete for TM Switch	0	0%	18-Jan-10		762 Princes Street Works Complete for TM Switch																							
763	Ch.130,960-130,380 (Palmerston Place - Princes Street)	0	0%	01-Feb-10		763 Ch.130,960-130,380 (Palmerston Place - Princes Street)																							
Ch.130,960 - 130,380 (Palmerston Place - Princes Street)																													
Track Work																													
1A-24-CHGE-230	Agreement of Change (BDD-IFC) - Trackwork	0	0%	27-Nov-09*	27-Nov-09	1A-24-CHGE-230 Agreement of Change (BDD-IFC) - Trackwork																							
653	Site Clearance	10	0%	01-Feb-10	12-Feb-10	653 Site Clearance																							
654	Plane Main Carriageway for Overlay	9	0%	08-Feb-10	18-Feb-10	654 Plane Main Carriageway for Overlay																							
659	Core and Cast OLE Pole Foundations (28nr)	28	0%	22-Feb-10	31-Mar-10	659 Core and Cast OLE Pole Foundations (28nr)																							
662	Erect Barrier	5	0%	01-Feb-10	05-Feb-10	662 Erect Barrier																							
Road Works																													
1A-24-CHGE-220	Agreement of Change (BDD-IFC) - Roadwork	0	0%	27-Nov-09*	27-Nov-09	1A-24-CHGE-220 Agreement of Change (BDD-IFC) - Roadwork																							
Drainage & Ducts																													
657	Drainage to Discharge Points	28	0%	22-Feb-10	31-Mar-10	657 Drainage to Discharge Points																							

Date	Revision	Checked	Approved
27-Nov-09	Construction Programme Updated V51 & Progress	JAC	

■ Actual Work ■ % Complete
■ Normal ■ WBS Summary Activity
◆ Milestone ◆ Milestone

"This programme is provided for information and coordination purposes only; and without prejudice to the rights of the Infraco under the Agreement. This programme constitutes a target programme and as such, contains durations that are based on a risk profile not consistent with the Accepted Programme."

CEC00624424_0111

Three Month Look-Ahead Programme

December 2009 - February 2010

EDINBURGH TRAM NETWORK



Activity ID	Activity Name	Original Duration	Activity % Complete	Start	Finish	2009												2010		
						23	30	07	14	21	28	04	11	18	25	01	08	15	22	01
666	Investigate services / outfall positions / inlet-outlet positions / levels	10	0%	08-Feb-10	19-Feb-10	[Gantt bar from 23 Dec to 15 Feb]												[Gantt bar from 01 Feb to 15 Feb]		
Pavement Construction Traffic Lanes																				
Westbound Carriageway																				
493	Excavate existing footpaths adjacent to Tramstop	6	0%	19-Feb-10	26-Feb-10	[Gantt bar from 19 Feb to 26 Feb]												[Gantt bar from 19 Feb to 26 Feb]		
542	Excavate to Formation (islands)	3	0%	15-Feb-10	17-Feb-10	[Gantt bar from 15 Feb to 17 Feb]												[Gantt bar from 15 Feb to 17 Feb]		
Haymarket Ch. 1,250-1,050																				
Phase 1 (Main Area - Eastbound Side)																				
324	Core and Cast OLE Pole Foundations (7nr)	7	0%	27-Jan-10	05-Feb-10	[Gantt bar from 27 Jan to 05 Feb]												[Gantt bar from 27 Jan to 05 Feb]		
327	Erect Barrier	2	0%	13-Jan-10	15-Jan-10	[Gantt bar from 13 Jan to 15 Jan]												[Gantt bar from 13 Jan to 15 Jan]		
328	Site Clearance	5	0%	15-Jan-10	22-Jan-10	[Gantt bar from 15 Jan to 22 Jan]												[Gantt bar from 15 Jan to 22 Jan]		
329	Plane Main Carriageway for Overlay	3	0%	22-Jan-10	27-Jan-10	[Gantt bar from 22 Jan to 27 Jan]												[Gantt bar from 22 Jan to 27 Jan]		
Drainage & Ducts																				
322	Drainage to Discharge Points	23	0%	27-Jan-10	01-Mar-10	[Gantt bar from 27 Jan to 01 Mar]												[Gantt bar from 27 Jan to 01 Mar]		
323	Traffic Signal and Lighting Ducts	11	0%	12-Feb-10	01-Mar-10	[Gantt bar from 12 Feb to 01 Mar]												[Gantt bar from 12 Feb to 01 Mar]		
331	Investigate services / outfall positions / inlet-outlet positions / levels	4	0%	15-Jan-10	21-Jan-10	[Gantt bar from 15 Jan to 21 Jan]												[Gantt bar from 15 Jan to 21 Jan]		
Phase 1/1 - Outbound Track																				
396	Plane out existing surfacing over Trams Footprint (1st cut - box)	2	0%	03-Feb-10	05-Feb-10	[Gantt bar from 03 Feb to 05 Feb]												[Gantt bar from 03 Feb to 05 Feb]		
407	Carry out inspection and testing of Subgrade	1	0%	04-Feb-10	05-Feb-10	[Gantt bar from 04 Feb to 05 Feb]												[Gantt bar from 04 Feb to 05 Feb]		
410	Excavate to formation - track box and island	4	0%	15-Feb-10	19-Feb-10	[Gantt bar from 15 Feb to 19 Feb]												[Gantt bar from 15 Feb to 19 Feb]		
422	Check suitability of formation (ongoing)	1	0%	19-Feb-10	22-Feb-10	[Gantt bar from 19 Feb to 22 Feb]												[Gantt bar from 19 Feb to 22 Feb]		
428	Plane out remaining make-up to formation of Tram Footprint (2nd cut - box)	2	0%	05-Feb-10	09-Feb-10	[Gantt bar from 05 Feb to 09 Feb]												[Gantt bar from 05 Feb to 09 Feb]		
429	Outbound Tram Ducts & Chambers	4	0%	09-Feb-10	15-Feb-10	[Gantt bar from 09 Feb to 15 Feb]												[Gantt bar from 09 Feb to 15 Feb]		
Phase 1/2 - Inbound Track																				
394	Excavate to formation	4	0%	26-Feb-10	04-Mar-10	[Gantt bar from 26 Feb to 04 Mar]												[Gantt bar from 26 Feb to 04 Mar]		
423	Inbound Tram Ducts & Chambers	7	0%	17-Feb-10	26-Feb-10	[Gantt bar from 17 Feb to 26 Feb]												[Gantt bar from 17 Feb to 26 Feb]		
430	Plane out existing surfacing over Trams Footprint (1st cut - box)	3	0%	09-Feb-10	12-Feb-10	[Gantt bar from 09 Feb to 12 Feb]												[Gantt bar from 09 Feb to 12 Feb]		
431	Carry out inspection and testing of Subgrade	1	0%	11-Feb-10	12-Feb-10	[Gantt bar from 11 Feb to 12 Feb]												[Gantt bar from 11 Feb to 12 Feb]		
442	Plane out remaining make-up to formation of Tram Footprint (2nd cut - box)	3	0%	12-Feb-10	17-Feb-10	[Gantt bar from 12 Feb to 17 Feb]												[Gantt bar from 12 Feb to 17 Feb]		
SECTION 2 HAYMARKET CORRIDOR																				
02A Haymarket Corridor																				
MJFDA & Utility Completions																				
A1070	Haymarket to Roseburn Junction	0	0%		27-Nov-09*	[Gantt bar from 27 Nov 09 to 27 Nov 09]												[Gantt bar from 27 Nov 09 to 27 Nov 09]		
Haymarket (inc.) to Roseburn Junction (inc.)																				
Design																				
2A-13-ROAD-20	Issue Construction Drawings - Ducting 2A	0	0%		27-Nov-09*	[Gantt bar from 27 Nov 09 to 27 Nov 09]												[Gantt bar from 27 Nov 09 to 27 Nov 09]		
2A-13-TRCK-10	Issue Construction Drawings - Track Model 2A	0	0%		27-Nov-09*	[Gantt bar from 27 Nov 09 to 27 Nov 09]												[Gantt bar from 27 Nov 09 to 27 Nov 09]		
2A-13-TRCK-20	Issue Construction Drawings - S19 Trackform	0	0%		05-Jan-10*	[Gantt bar from 05 Jan 10 to 05 Jan 10]												[Gantt bar from 05 Jan 10 to 05 Jan 10]		
2A-13-TRMS-100	Re-Issue Construction Drawings - Haymarket Tramstop incl equip	0	0%		12-Feb-10*	[Gantt bar from 12 Feb 10 to 12 Feb 10]												[Gantt bar from 12 Feb 10 to 12 Feb 10]		
S19 - Haymarket Station Viaduct																				
Haymarket to Roseburn Junction																				
Issue Construction Drawings - Ducting 2A																				
Issue Construction Drawings - Track Model 2A																				
Issue Construction Drawings - S19 Trackform																				
Re-Issue Construction Drawings - Haymarket																				

Date	Revision	Checked	Approved	Page 7 of 21
27-Nov-09	Construction Programme Updated V51 & Progress	JAC		

Actual Work (Blue bar)
 Normal (Orange bar)
 Milestone (Diamond symbol)

% Complete (Black line)
 WBS Summary Activity (Green bar)

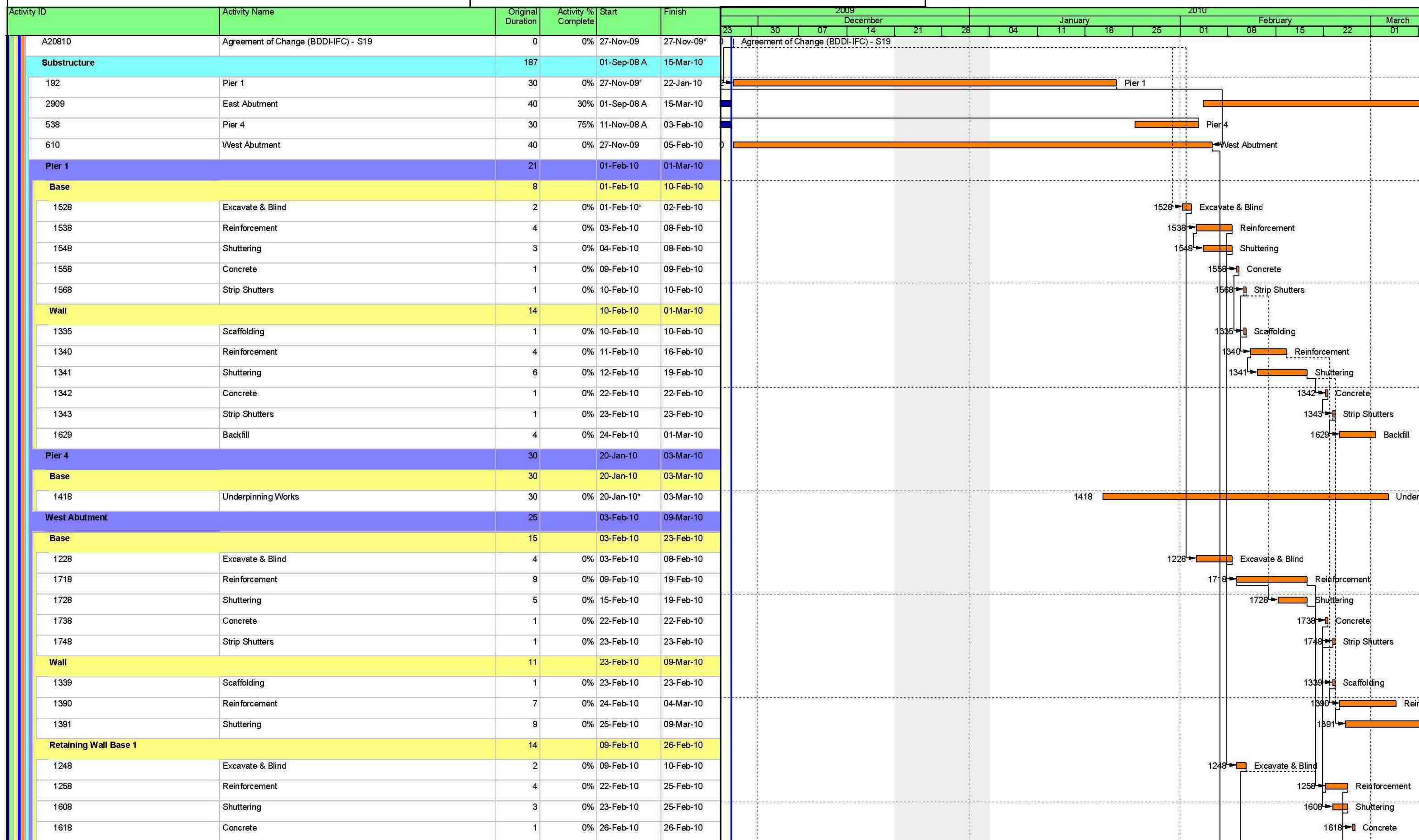
* This programme is provided for information and coordination purposes only; and without prejudice to the rights of the Infraco under the Agreement. This programme constitutes a target programme and as such, contains durations that are based on a risk profile not consistent with the Accepted Programme.

CEC00624424_0112

Three Month Look-Ahead Programme

December 2009 - February 2010

EDINBURGH TRAM NETWORK



Date	Revision	Checked	Approved
27-Nov-09	Construction Programme Updated V51 & Progress	JAC	

- Actual Work
- Normal
- WBS Summary Activity
- Milestone
- % Complete

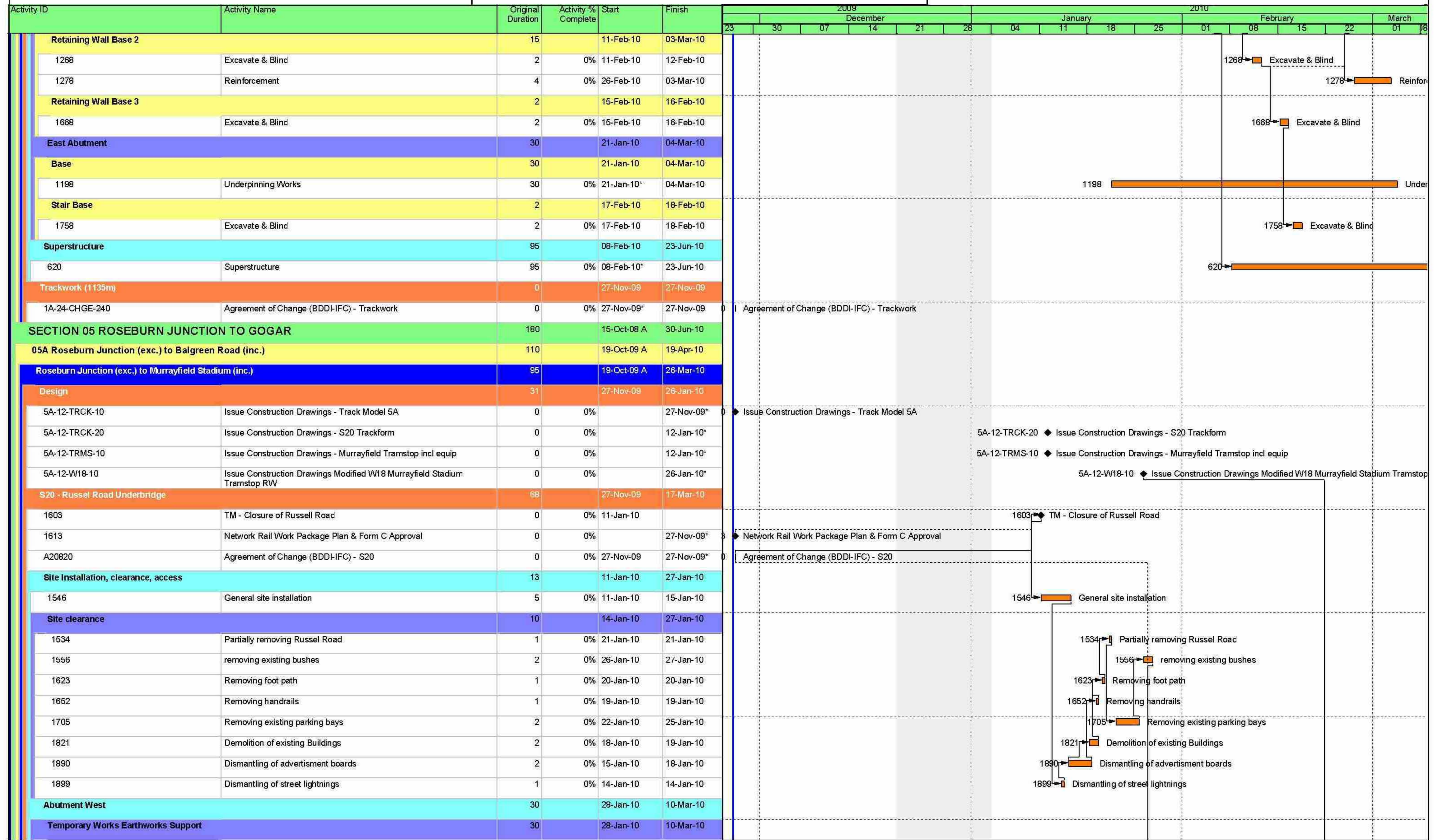
"This programme is provided for information and coordination purposes only; and without prejudice to the rights of the Infraco under the Agreement. This programme constitutes a target programme and as such, contains durations that are based on a risk profile not consistent with the Accepted Programme."

CEC00624424_0113

Three Month Look-Ahead Programme

December 2009 - February 2010

EDINBURGH TRAM NETWORK



Date	Revision	Checked	Approved
27-Nov-09	Construction Programme Updated V51 & Progress	JAC	

■ Actual Work ■ % Complete
■ Normal ■ WBS Summary Activity
◆ Milestone

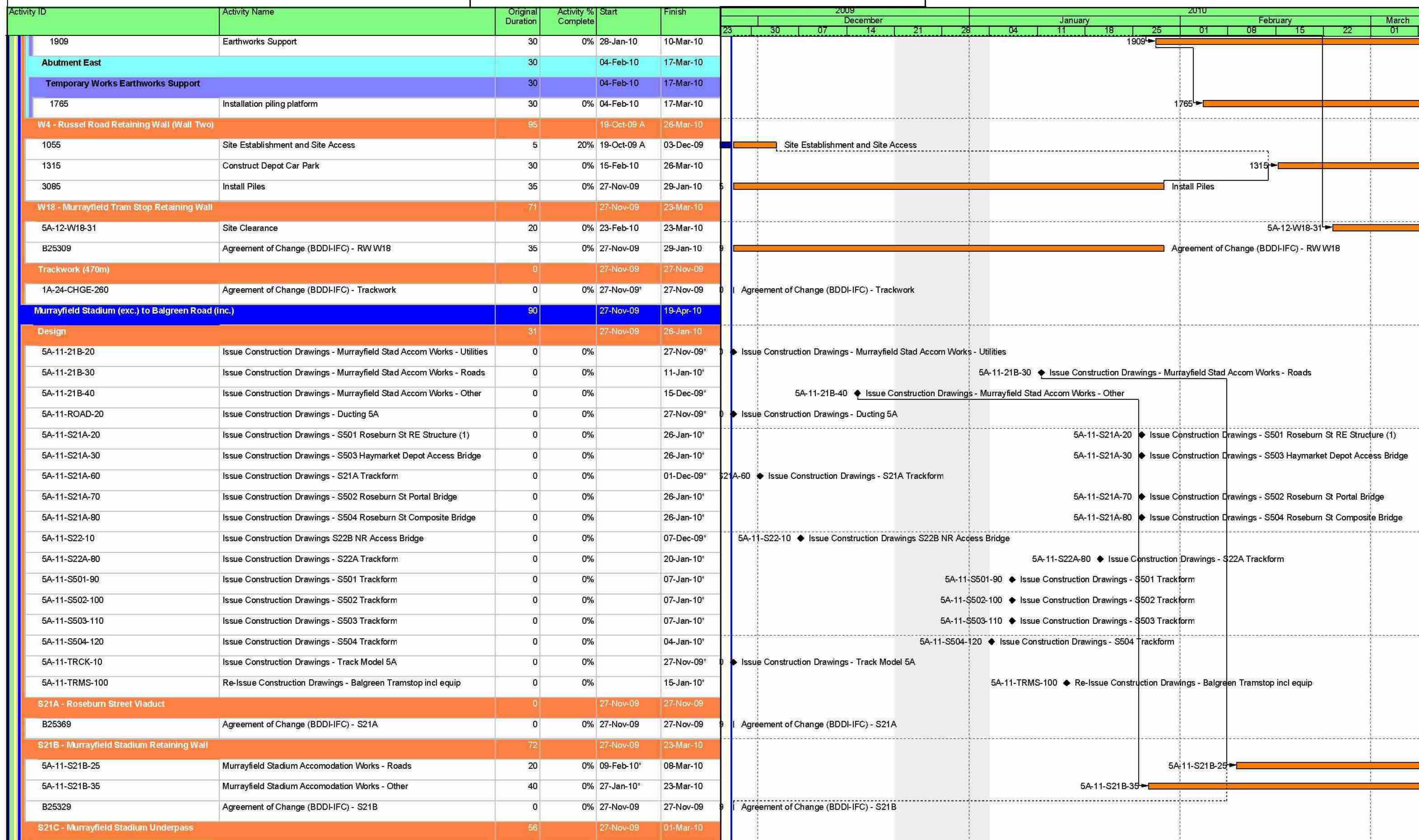
"This programme is provided for information and coordination purposes only; and without prejudice to the rights of the Infraco under the Agreement. This programme constitutes a target programme and as such, contains durations that are based on a risk profile not consistent with the Accepted Programme."

CEC00624424_0114

Three Month Look-Ahead Programme

December 2009 - February 2010

EDINBURGH TRAM NETWORK



Date	Revision	Checked	Approved
27-Nov-09	Construction Programme Updated V51 & Progress	JAC	

■ Actual Work ■ % Complete
■ Normal ■ WBS Summary Activity
◆ Milestone ◆ Milestone

"This programme is provided for information and coordination purposes only; and without prejudice to the rights of the Infraco under the Agreement. This programme constitutes a target programme and as such, contains durations that are based on a risk profile not consistent with the Accepted Programme."

CEC00624424_0115

Three Month Look-Ahead Programme

December 2009 - February 2010

EDINBURGH TRAM NETWORK



Activity ID	Activity Name	Original Duration	Activity % Complete	Start	Finish	2009												2010											
						December				January				February				March				April				May			
						23	30	07	14	21	28	04	11	18	25	01	08	15	22	01	08	15	22	01	08	15	22		
1884	Excavation top soil part of RTW S21B	0	0%	27-Nov-09		▶ Excavation top soil part of RTW S21B																							
1896	Site fences part of RTW 21B	0	0%	11-Jan-10		▶ 1896 Site fences part of RTW 21B																							
1973	Installation of site road part of RTW S21B	0	0%	27-Nov-09		▶ Installation of site road part of RTW S21B																							
2055	Site clearance in general part of RTW S21B	0	0%	27-Nov-09		▶ Site clearance in general part of RTW S21B																							
B25339	Agreement of Change (BDDH-IFC) - S21C	0	0%	27-Nov-09	27-Nov-09	▶ Agreement of Change (BDDH-IFC) - S21C																							
Site Installation, clearance, access		15		17-Jan-10	07-Feb-10																								
SI		15		17-Jan-10	07-Feb-10																								
2012	Rail possessions - sheet piling (indicative only)	3	0%	24-Jan-10	07-Feb-10	▶ 2012 Rail possessions - sheet piling (indicative only)																							
2181	Erection protection fence	1	0%	17-Jan-10	17-Jan-10	▶ 2181 Erection protection fence																							
Substructures		26		24-Jan-10	01-Mar-10																								
Bottomslab		17		24-Jan-10	16-Feb-10																								
1897	partially removal existing Wingwall	1	0%	08-Feb-10	08-Feb-10	▶ 1897 partially removal existing Wingwall																							
1906	sheet piling	3	0%	24-Jan-10	07-Feb-10	▶ 1906 sheet piling																							
2022	Casting concrete	1	0%	16-Feb-10	16-Feb-10	▶ 2022 Casting concrete																							
2191	Fixing reinforcement	2	0%	12-Feb-10	15-Feb-10	▶ 2191 Fixing reinforcement																							
2250	Formwork erection	1	0%	11-Feb-10	11-Feb-10	▶ 2250 Formwork erection																							
2269	Casting blinding	1	0%	10-Feb-10	10-Feb-10	▶ 2269 Casting blinding																							
2488	Excavation to formation level	1	0%	09-Feb-10	09-Feb-10	▶ 2488 Excavation to formation level																							
Sidewall 1		6		17-Feb-10	24-Feb-10																								
1907	Formwork erection inside	1	0%	22-Feb-10	22-Feb-10	▶ 1907 Formwork erection inside																							
1916	Fixing reinforcement	2	0%	18-Feb-10	19-Feb-10	▶ 1916 Fixing reinforcement																							
2075	Formwork erection outside	1	0%	17-Feb-10	17-Feb-10	▶ 2075 Formwork erection outside																							
2279	Removing Formwork	1	0%	24-Feb-10	24-Feb-10	▶ 2279 Removing Formwork																							
2498	Casting concrete	1	0%	23-Feb-10	23-Feb-10	▶ 2498 Casting concrete																							
Sidewall 2		3		25-Feb-10	01-Mar-10																								
1914	Formwork erection inside	1	0%	25-Feb-10	25-Feb-10	▶ 1914 Formwork erection inside																							
2085	Fixing reinforcement	2	0%	26-Feb-10	01-Mar-10	▶ 2085 Fixing reinforcement																							
S21D - Murrayfield Training Pitches Retaining Wall		45		27-Nov-09	12-Feb-10																								
5A-11-S21D-31	Site Clearance	10	0%	11-Jan-10*	22-Jan-10	▶ 5A-11-S21D-31 Site Clearance																							
5A-11-S21D-61	Foundations	15	0%	25-Jan-10	12-Feb-10	▶ 5A-11-S21D-61 Foundations																							
B25349	Agreement of Change (BDDH-IFC) - S21D	0	0%	27-Nov-09	27-Nov-09	▶ Agreement of Change (BDDH-IFC) - S21D																							
S21E - Water of Leith Bridge		26		27-Nov-09	18-Jan-10																								
B25359	Agreement of Change (BDDH-IFC) - S21E	0	0%	27-Nov-09	27-Nov-09	▶ Agreement of Change (BDDH-IFC) - S21E																							
Site Installation, clearance, access		5		11-Jan-10	18-Jan-10																								
SI - west		5		11-Jan-10	18-Jan-10																								
2320	Site clearance - cut down of trees	5	0%	11-Jan-10*	18-Jan-10	▶ 2320 Site clearance - cut down of trees																							
W8 - Baird Drive Retaining Walls		90		27-Nov-09	19-Apr-10																								
5A-11-W8-31	Site Clearance	10	0%	11-Jan-10*	22-Jan-10	▶ 5A-11-W8-31 Site Clearance																							
5A-11-W8-51	Foundations	15	0%	25-Jan-10	12-Feb-10	▶ 5A-11-W8-51 Foundations																							

Date	Revision	Checked	Approved
27-Nov-09	Construction Programme Updated V51 & Progress	JAC	

Actual Work
 % Complete
 Normal
 WBS Summary Activity
 Milestone

"This programme is provided for information and coordination purposes only; and without prejudice to the rights of the Infracore under the Agreement. This programme constitutes a target programme and as such, contains durations that are based on a risk profile not consistent with the Accepted Programme."

CEC00624424_0116

Three Month Look-Ahead Programme

December 2009 - February 2010

EDINBURGH TRAM NETWORK



Activity ID	Activity Name	Original Duration	Activity % Complete	Start	Finish	2009							2010								
						December			January				February				March				
						23	30	07	14	21	28	04	11	18	25	01	08	15	22	01	08
5A-11-W8-52	Reinforced Earth Wall to underside of S21E abutment	45	0%	15-Feb-10	19-Apr-10	5A-11-W8-52															
B25319	Agreement of Change (BDD-IFC) - RW W8	0	0%	27-Nov-09	27-Nov-09	Agreement of Change (BDD-IFC) - RW W8															
S22A - Balgreen Road Tram Bridge																					
B25389	Agreement of Change (BDD-IFC) - RW W8	0	0%	27-Nov-09	27-Nov-09	Agreement of Change (BDD-IFC) - RW W8															
W9 - Balgreen Road Retaining Wall																					
B25399	Agreement of Change (BDD-IFC) - RW W9	0	0%	27-Nov-09	27-Nov-09	Agreement of Change (BDD-IFC) - RW W9															
S22B - Network Rail Access Bridge																					
B25409	Agreement of Change (BDD-IFC) - RW W8	0	0%	27-Nov-09	27-Nov-09	Agreement of Change (BDD-IFC) - RW W8															
Trackwork (1006m)																					
1A-24-CHGE-270	Agreement of Change (BDD-IFC) - Trackwork	0	0%	27-Nov-09*	27-Nov-09	Agreement of Change (BDD-IFC) - Trackwork															
05B Balgreen Road (exc.) to Edinburgh Park Central (inc.)																					
MJDA & Utilities Completions		0		27-Nov-09	27-Nov-09																
A20120	Saughton Road North to Bankhead	0	0%		27-Nov-09*	Saughton Road North to Bankhead															
A20130	Bankhead to Edinburgh Park Station	0	0%		27-Nov-09*	Bankhead to Edinburgh Park Station															
Balgreen Road (exc.) to Saughton Road North (inc.)																					
Design		15		16-Dec-09	20-Jan-10																
5B-10-TRCK-20	Issue Construction Drawings - S23 Trackform	0	0%		16-Dec-09*	5B-10-TRCK-20 Issue Construction Drawings - S23 Trackform															
5B-10-TRMS-100	Re-Issue Construction Drawings - Saughton Tramstop incl equip	0	0%		20-Jan-10*	5B-10-TRMS-100 Re-Issue Construction Drawings - Saughton Tramstop incl equip															
S23 - Carrick Knowe Underdridge																					
Sub Structure		84		25-Oct-09 A	19-Mar-10																
North Abutment																					
2537	Return Wall	31	0%	18-Dec-09*	12-Feb-10	2537 Return Wall															
2640	Stem	21	60%	25-Oct-09 A	17-Dec-09	2640 Stem															
2680	NW Wing Wall C	25	0%	15-Feb-10	19-Mar-10	2680															
2710	NE Wing Wall F	24	0%	15-Feb-10	18-Mar-10	2710															
South Abutment																					
2527	Return Walls	43	18%	04-Nov-09 A	10-Feb-10	2527 Return Walls															
2657	SE Wing Wall G	24	0%	11-Feb-10	16-Mar-10	2657															
2677	SW Wing Wall B	25	0%	11-Feb-10	17-Mar-10	2677															
2890	Run-On Slabs	6	0%	27-Nov-09	07-Dec-09	Run-On Slabs															
Trackwork (1,690m)																					
1A-24-CHGE-250	Agreement of Change (BDD-IFC) - Trackwork	0	0%	27-Nov-09*	27-Nov-09	Agreement of Change (BDD-IFC) - Trackwork															
1A-24-CHGE-280	Agreement of Change (BDD-IFC) - Earthwork	0	0%	27-Nov-09*	27-Nov-09	Agreement of Change (BDD-IFC) - Earthwork															
1A-24-CHGE-290	Agreement of Change (BDD-IFC) - Drainage	0	0%	27-Nov-09*	27-Nov-09	Agreement of Change (BDD-IFC) - Drainage															
Concrete Slab Track 590m																					
5B-10C-SIGN-60	wayside preparation for loops(0) and boxes(3)	2	0%	08-Feb-10	10-Feb-10	5B-10C-SIGN-60 wayside preparation for loops(0) and boxes(3)															
5B-10C-TRCK-70	Track laying (2x70m+2x8m+2x3m+2x5m+2x3m+2x45m - Rheda + 2x75m+2x175m+2x85m+2x103m+2x225m - fix)	42	0%	18-Nov-09 A	10-Feb-10	5B-10C-TRCK-70 Track laying (2x70m+2x8m+2x3m+2x5m+2x3m+2x45m - Rheda + 2x75m+2x175m+2x85m+2x103m+2x225m - fix)															
5B-10C-TRCK-80	Fencing & Finishes	12	0%	10-Feb-10	26-Feb-10	5B-10C-TRCK-80 Fencing & Finishes															
Ballasted Track 1,160m																					

Date	Revision	Checked	Approved
27-Nov-09	Construction Programme Updated V51 & Progress	JAC	

█ Actual Work █ % Complete
█ Normal █ WBS Summary Activity
◆ Milestone ◆ Milestone

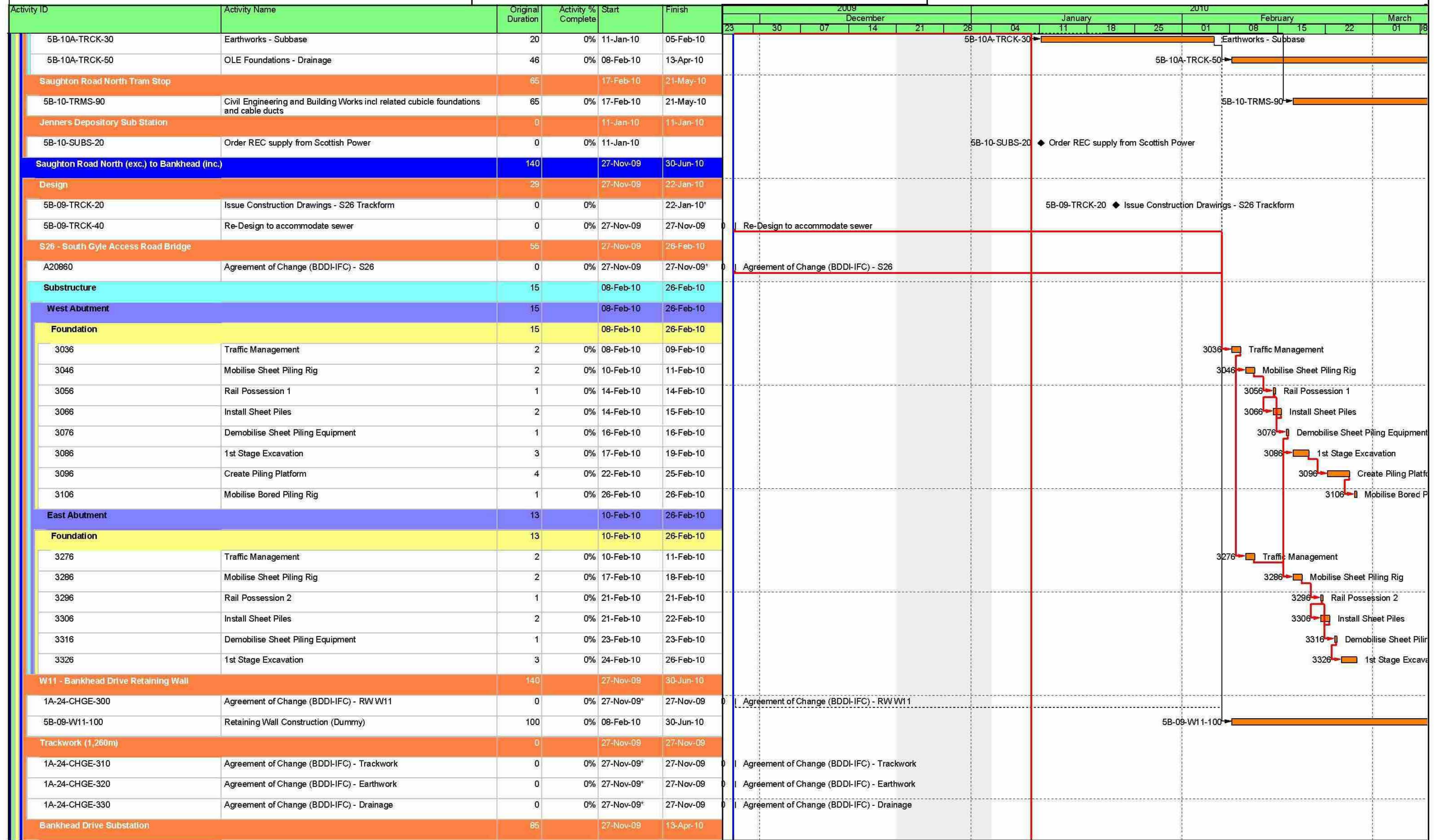
"This programme is provided for information and coordination purposes only; and without prejudice to the rights of the Infraco under the Agreement. This programme constitutes a target programme and as such, contains durations that are based on a risk profile not consistent with the Accepted Programme."

CEC00624424_0117

Three Month Look-Ahead Programme

December 2009 - February 2010

EDINBURGH TRAM NETWORK



Date	Revision	Checked	Approved
27-Nov-09	Construction Programme Updated V51 & Progress	JAC	

■ Actual Work ■ % Complete
■ Normal ■ WBS Summary Activity
◆ Milestone

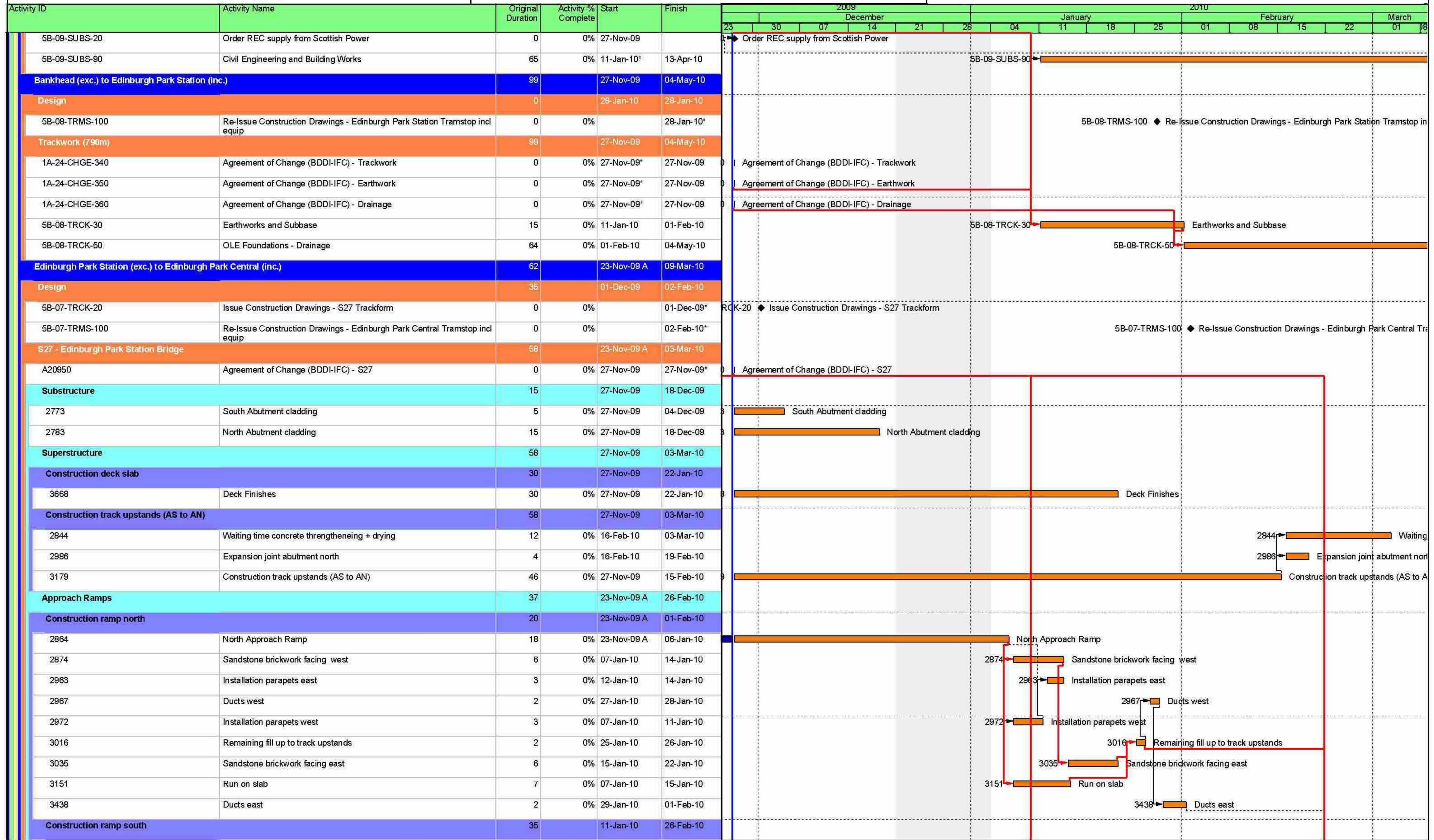
"This programme is provided for information and coordination purposes only; and without prejudice to the rights of the Infraco under the Agreement. This programme constitutes a target programme and as such, contains durations that are based on a risk profile not consistent with the Accepted Programme."

CEC00624424_0118

Three Month Look-Ahead Programme

December 2009 - February 2010

EDINBURGH TRAM NETWORK



Date	Revision	Checked	Approved
27-Nov-09	Construction Programme Updated V51 & Progress	JAC	

■ Actual Work ▬ % Complete
■ Normal ■ WBS Summary Activity
◆ Milestone

"This programme is provided for information and coordination purposes only; and without prejudice to the rights of the Infraco under the Agreement. This programme constitutes a target programme and as such, contains durations that are based on a risk profile not consistent with the Accepted Programme."

CEC00624424_0119

Three Month Look-Ahead Programme

December 2009 - February 2010

EDINBURGH TRAM NETWORK



Activity ID	Activity Name	Original Duration	Activity % Complete	Start	Finish	2009												2010		
						December						January						February		March
						23	30	07	14	21	28	04	11	18	25	01	08	15	22	01
2977	Installation parapets west	3	0%	19-Feb-10	23-Feb-10															
3026	Run on slab	7	0%	10-Feb-10	18-Feb-10															
3171	Ducts east	2	0%	25-Feb-10	26-Feb-10															
3210	Ducts west	2	0%	23-Feb-10	24-Feb-10															
3219	South Approach Ramp	22	0%	11-Jan-10	09-Feb-10															
3229	Remaining fill up to track upstands	2	0%	19-Feb-10	22-Feb-10															
3448	Installation parapets east	3	0%	24-Feb-10	26-Feb-10															
Trackwork (854m)		62		27-Nov-09	09-Mar-10															
1A-24-CHGE-370	Agreement of Change (BDDI-IFC) - Trackwork	0	0%	27-Nov-09*	27-Nov-09															
1A-24-CHGE-380	Agreement of Change (BDDI-IFC) - Earthwork	0	0%	27-Nov-09*	27-Nov-09															
1A-24-CHGE-390	Agreement of Change (BDDI-IFC) - Drainage	0	0%	27-Nov-09*	27-Nov-09															
5B-07-TRCK-30	Earthworks- Subbase	11	0%	23-Feb-10	09-Mar-10															
05C Edinburgh Park Central (exc.) to Gogarburn (inc.)		114		15-Oct-08 A	26-Mar-10															
MJDF& Utilities Completions		0		27-Nov-09	27-Nov-09															
A20110	Gyle to Depot	0	0%	27-Nov-09*	27-Nov-09*															
Edinburgh Park (exc.) to Gyle Centre (inc.)		74		27-Nov-09	26-Mar-10															
Design		39		27-Nov-09	05-Feb-10															
136	Issue for Construction Drawings - Earthworks	0	0%	30-Nov-09*	30-Nov-09*															
5C-06-TRCK-10	Issue Construction Drawings - Track Model 5C	0	0%	27-Nov-09*	27-Nov-09*															
5C-06-TRMS-120	Re-Issue Construction Drawings - Gyle Tramstop incl equip	0	0%	05-Feb-10*	05-Feb-10*															
W19 - Gyle Centre Tram Stop Retaining Wall		74		27-Nov-09	26-Mar-10															
A20880	Agreement of Change (BDDI-IFC) - W19	0	0%	27-Nov-09	27-Nov-09*															
Wall Construction		38		02-Feb-10	26-Mar-10															
2156	Excavation	8	0%	02-Feb-10	12-Feb-10															
2166	Shear Key	11	0%	12-Feb-10	01-Mar-10															
2176	Base	22	0%	24-Feb-10	26-Mar-10															
2187	Backfill and Blind	6	0%	22-Feb-10	02-Mar-10															
Site Establishment		11		25-Jan-10	09-Feb-10															
2116	Temporary Fencing	2	0%	27-Jan-10	29-Jan-10															
2126	Site Clearance	2	0%	29-Jan-10	02-Feb-10															
2136	Offices, Compounds & Welfare Facilities	5	0%	02-Feb-10	09-Feb-10															
2146	Close Footpath	2	0%	25-Jan-10	27-Jan-10															
Trackwork (760m)		0		27-Nov-09	27-Nov-09															
1A-24-CHGE-400	Agreement of Change (BDDI-IFC) - Trackwork	0	0%	27-Nov-09*	27-Nov-09															
1A-24-CHGE-410	Agreement of Change (BDDI-IFC) - Earthwork	0	0%	27-Nov-09*	27-Nov-09															
1A-24-CHGE-420	Agreement of Change (BDDI-IFC) - Drainage	0	0%	27-Nov-09*	27-Nov-09															
Gyle Centre (exc.) to Depot Stop (inc.)		99		15-Oct-08 A	04-Mar-10															
Design		1		27-Nov-09	30-Nov-09															
146	Issue for Construction Drawings - Earthworks	0	0%	30-Nov-09*	30-Nov-09*															

Date	Revision	Checked	Approved
27-Nov-09	Construction Programme Updated V51 & Progress	JAC	

Page 15 of 21

	Actual Work		% Complete
	Normal		WBS Summary Activity
	Milestone		

"This programme is provided for information and coordination purposes only; and without prejudice to the rights of the Infraco under the Agreement. This programme constitutes a target programme and as such, contains durations that are based on a risk profile not consistent with the Accepted Programme."