

Three Month Look-Ahead Programme

December 2009 - February 2010

EDINBURGH TRAM NETWORK



Activity ID	Activity Name	Original Duration	Activity % Complete	Start	Finish	2009												2010											
						December				January				February				March				April				May			
						23	30	07	14	21	28	04	11	18	25	01	08	15	22	01	08	15	22	01	08	15	22		
Depot Access Road																													
North Side																													
14823	Capping	10	0%	15-Feb-10	01-Mar-10																								
Depot Building																													
Foundations																													
14922	OLE foundations GL's 20 to 10	15	0%	08-Feb-10	01-Mar-10																								
15322	Ground beams GL's 20 to 10	15	0%	18-Jan-10	08-Feb-10																								
15432	Ground beams GL's 10 to 1	15	0%	08-Feb-10	01-Mar-10																								
Substructure & Superstructure-1																													
15352	Structural steelwork (primary) - GL's 10 to 1	20	100%	27-Nov-09 A	08-Jan-10 A																								
15362	Structural steelwork (secondary) - GL's 10 to 1	20	80%	11-Dec-09 A	21-Jan-10																								
Pits																													
14892	Wheel lathe pit	20	0%	18-Jan-10	15-Feb-10																								
14902	Floor jack pits	20	0%	18-Jan-10	15-Feb-10																								
14903	Inspection pits	20	0%	27-Nov-09	08-Jan-10																								
Substructure & Superstructure																													
15292	Service ducts below ground floor slab GL's 20 to 10	20	0%	18-Jan-10	15-Feb-10																								
15293	Service ducts below ground floor slab GL's 10 to 1	20	0%	15-Feb-10	15-Mar-10																								
15302	Drainage below ground floor slab GL's 20 to 10	20	0%	18-Jan-10	15-Feb-10																								
15303	Drainage below ground floor slab GL's 10 to 1	20	0%	15-Feb-10	15-Mar-10																								
15382	Substructure blockwork - GL's 10 to 1	20	0%	15-Feb-10	15-Mar-10																								
15402	Service troughs GL's 20 to 10	20	0%	18-Jan-10	15-Feb-10																								
15412	Service troughs GL's 10 to 1	20	0%	15-Feb-10	15-Mar-10																								
15462	1st floor slab GL's 20 to 10	20	50%	09-Nov-09 A	15-Feb-10																								
15472	1st floor slab GL's 10 to 1	20	0%	15-Feb-10	15-Mar-10																								
3265	Substructure blockwork - GL's 20 to 10	20	0%	18-Jan-10	15-Feb-10																								
Building Envelope																													
14888	Roof cladding GL's 20 to 10	20	40%	16-Nov-09 A	09-Feb-10																								
14898	Roof cladding GL's 10 to 1	20	0%	09-Feb-10	09-Mar-10																								
Incoming Services																													
16233	Electricity	0	0%	27-Nov-09	27-Nov-09																								
16243	Gas	0	0%	27-Nov-09	27-Nov-09																								
16253	Water	0	0%	27-Nov-09	27-Nov-09																								
16263	Telecoms	0	0%	27-Nov-09	27-Nov-09																								
Substation Building																													
15554	Underground Drainage	6	0%	05-Feb-10	15-Feb-10																								
15573	Hardcore Upfill	2	0%	22-Feb-10	24-Feb-10																								
Excavate & Concrete Foundations																													
15543	Excavate & Concrete Foundations	10	0%	18-Jan-10	01-Feb-10																								

Date	Revision	Checked	Approved
27-Nov-09	Construction Programme Updated V51 & Progress	JAC	

█ Actual Work █ % Complete
█ Normal █ WBS Summary Activity
◆ Milestone ◆ Milestone

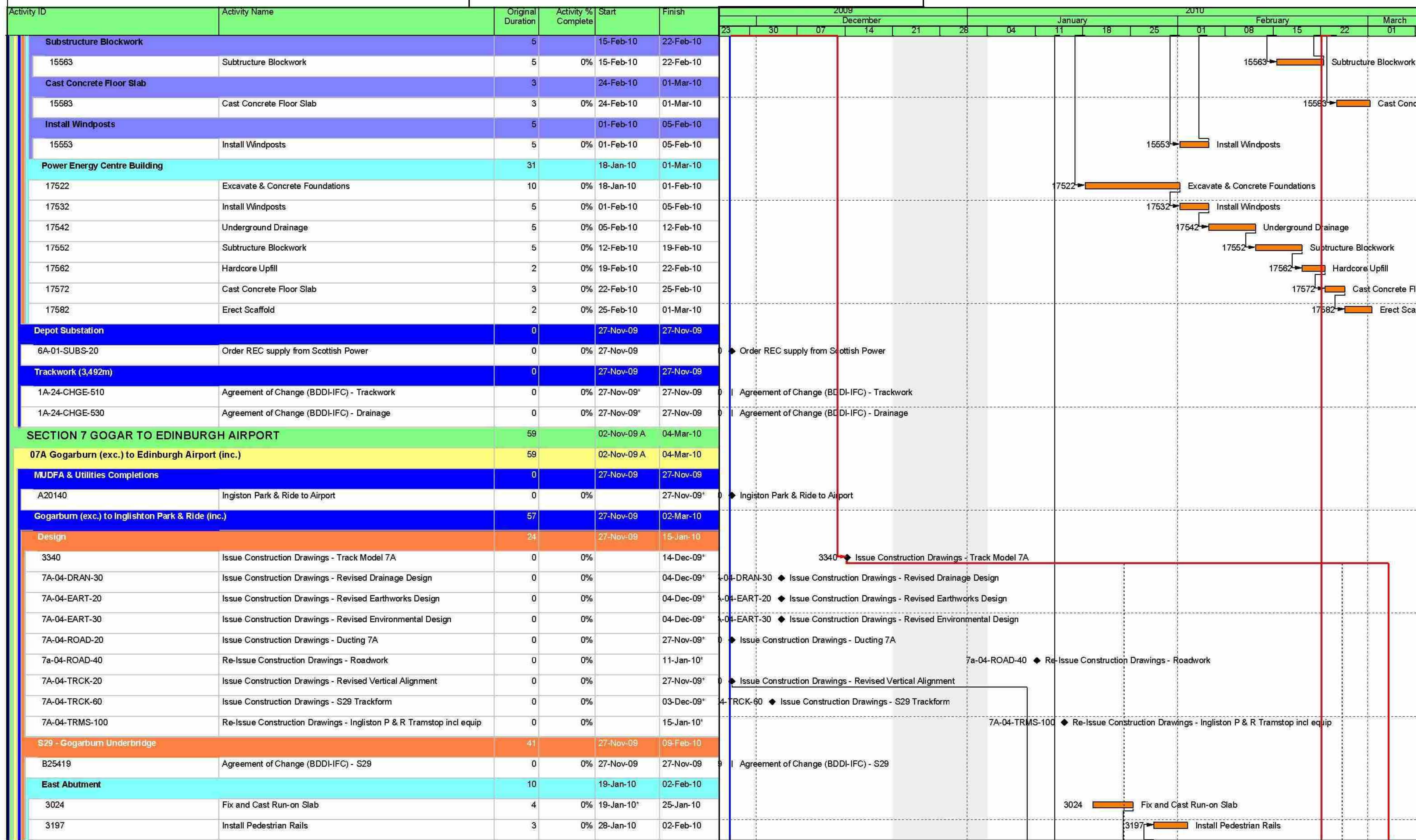
"This programme is provided for information and coordination purposes only; and without prejudice to the rights of the Infracore under the Agreement. This programme constitutes a target programme and as such, contains durations that are based on a risk profile not consistent with the Accepted Programme."

CEC00624424_0123

Three Month Look-Ahead Programme

December 2009 - February 2010

EDINBURGH TRAM NETWORK



Date	Revision	Checked	Approved
27-Nov-09	Construction Programme Updated V51 & Progress	JAC	

Actual Work
 Normal
 WBS Summary Activity
 % Complete
 Milestone

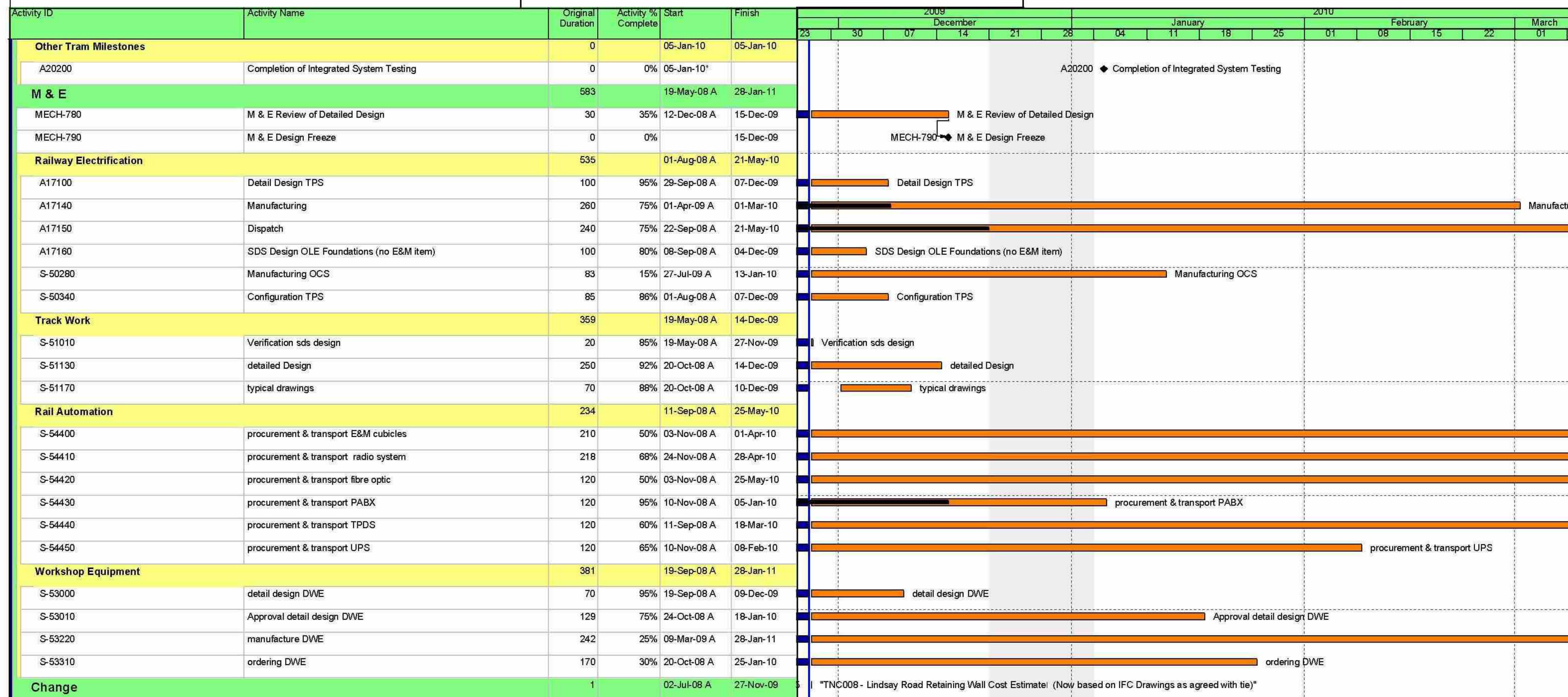
"This programme is provided for information and coordination purposes only; and without prejudice to the rights of the Infraco under the Agreement. This programme constitutes a target programme and as such, contains durations that are based on a risk profile not consistent with the Accepted Programme."

CEC00624424_0124

Three Month Look-Ahead Programme

December 2009 - February 2010

EDINBURGH TRAM NETWORK



Date	Revision	Checked	Approved
27-Nov-09	Construction Programme Updated V51 & Progress	JAC	

■ Actual Work ■ % Complete
■ Normal ■ WBS Summary Activity
◆ Milestone ◆ Milestone

"This programme is provided for information and coordination purposes only; and without prejudice to the rights of the Infracore under the Agreement. This programme constitutes a target programme and as such, contains durations that are based on a risk profile not consistent with the Accepted Programme."

CEC00624424_0126

10.4 Tram Programme



SUPPLY OF 27 TRAMS FOR THE EDINBURGH TRAM NETWORK
PROJECT PLANNING up to 26th of January

Id	Name	%	Start	Finish	2008												2009												2010												2011											
					M	A	M	J	J	A	S	O	N	D	E	F	M	A	M	J	J	A	S	O	N	D	E	F	M	A	M	J	J	A	S	O	N	D	E	F	M	A	M	J	J							
1	GENERAL	100%	06/05/08	06/05/08																																																
2	NTP	100%	06/05/08	06/05/08																																																
3	ENGINEERING	100%	06/05/08	15/05/09																																																
4	BASIC ENGINEERING	100%	06/05/08	13/11/08																																																
5	MOCK-UP	100%	13/05/08	05/11/08																																																
6	DESIGN & MANUFACTURING MOCK-UP	100%	13/05/08	29/09/08																																																
7	APPROVAL MOCK-UP	100%	30/09/08	05/11/08																																																
8	UNDERFRAME DESIGN	100%	01/07/08	24/11/08																																																
9	CARBODY DESIGN	100%	28/08/08	29/04/09																																																
10	LIST OF STEEL MATERIALS	100%	11/06/08	11/06/08																																																
11	INSTALLATIONS DESIGN	100%	24/10/08	14/04/09																																																
12	INTERIORS & FINISHING DESIGN	100%	25/11/08	15/05/09																																																
13	BOGIES DESIGN	100%	23/07/08	15/01/09																																																
14	1st TRAMSET PROCUREMENT	100%	06/05/08	17/07/09																																																
15	SYSTEMS	100%	06/05/08	10/07/09																																																
16	SPECIFICATIONS	100%	06/05/08	04/06/08																																																
17	SELECTION OF SUPPLIERS	100%	21/05/08	01/07/08																																																
18	ORDERS	100%	17/06/08	29/07/08																																																
19	INTERFACE 1- Systems Interface Basic Definition	100%	30/07/08	29/04/09																																																
20	CAF SYSTEMS	100%	30/07/08	31/10/08																																																
21	TPDS	100%	30/07/08	09/01/09																																																
22	RADIO	100%	30/07/08	04/02/09																																																
23	BUS TRACKER	100%	30/07/08	29/04/09																																																
24	INTERFACE 2- Systems Interface Complete Definition	100%	25/09/08	29/04/09																																																
25	CAF SYSTEMS	100%	25/09/08	15/12/08																																																
26	TPDS	100%	25/09/08	06/02/09																																																
27	RADIO	100%	25/09/08	04/03/09																																																
28	BUS TRACKER	100%	25/09/08	29/04/09																																																
29	MANUFACTURING & PURCHASING & TESTING	100%	27/06/08	10/07/09																																																
30	DELIVERY PREASSEMBLIES COMPONENTS	100%	15/04/09	15/04/09																																																
31	DELIVERY FIRST EQUIPMENT	100%	15/04/09	10/07/09																																																
32	OTHERS COMPONENTS & MATERIALS	100%	11/06/08	17/07/09																																																
33	STEEL MATERIALS	100%	11/06/08	24/11/08																																																
34	CARBODY COMPONENTS	100%	24/10/08	16/03/09																																																
35	INSTALLATIONS COMPONENTS	100%	16/12/08	29/05/09																																																
36	INTERIORS & FINISHING COMPONENTS	100%	17/02/09	17/07/09																																																
37	1st TRAM MANUFACTURING & TESTING	93%	29/09/08	04/06/10																																																
38	BODYSHELLS MANUFACTURING	100%	29/09/08	03/04/09																																																
39	JIGS & TOOLING MANUFACTURING	100%	29/09/08	22/12/08																																																
40	FRAME TOOLING	100%	29/09/08	09/12/08																																																
41	BODYSHELL TOOLING	100%	17/10/08	22/12/08																																																
42	1st BODYSHELL MANUFACTURING	100%	09/10/08	26/02/09																																																
43	FIRST PIECES LOT	100%	09/10/08	06/11/08																																																

Bus Tracker not officially closed

Not officially closed

Not officially closed

◆ Preassembly material not available
▨ Bus Tracker material not available

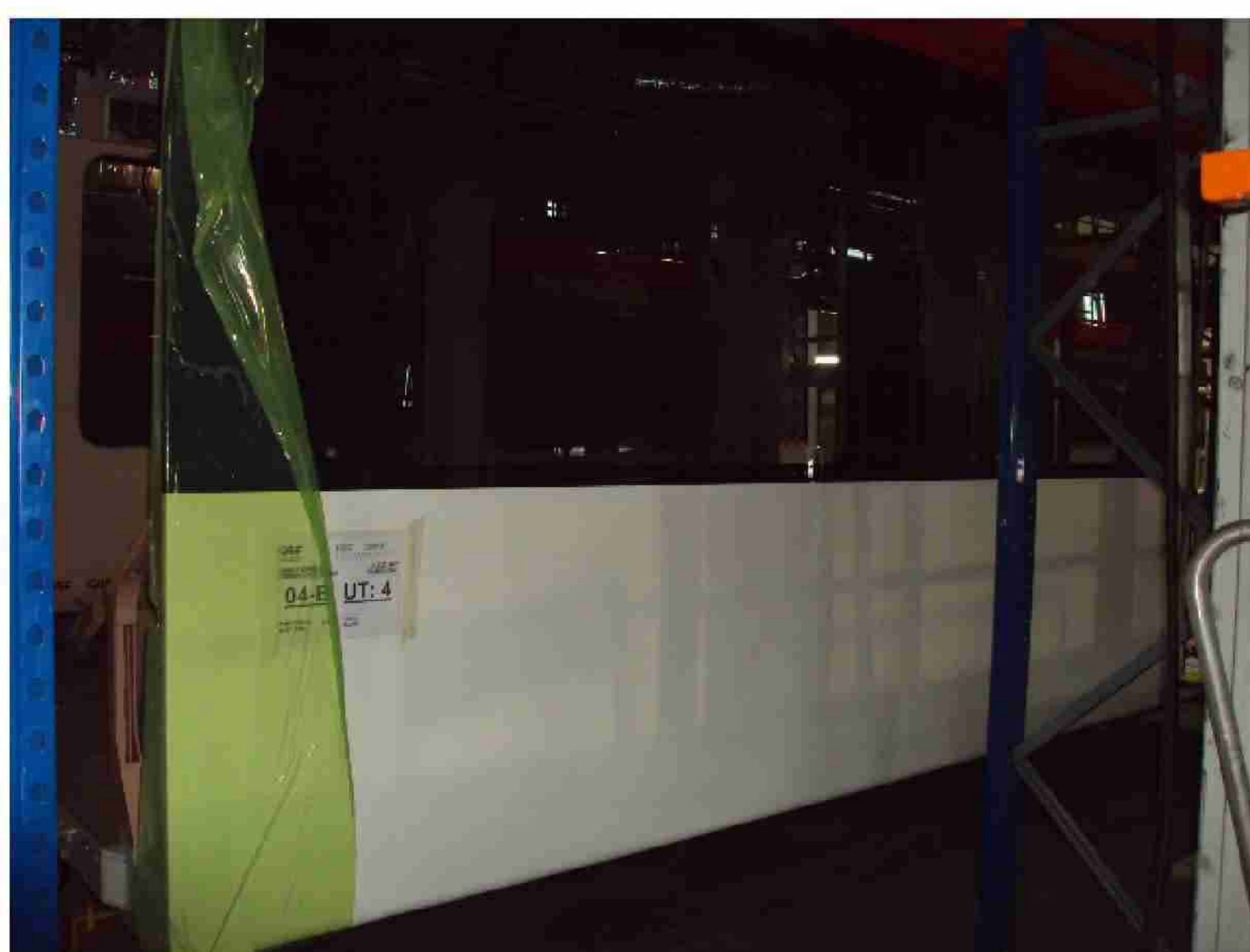
CEC00624424_0128

**INFORME DE AVANCE DE FABRICACIÓN
MANUFACTURING STATUS
"EDINBURGH TRAM"**

1.- ACABADO /FINISHING PROCESS

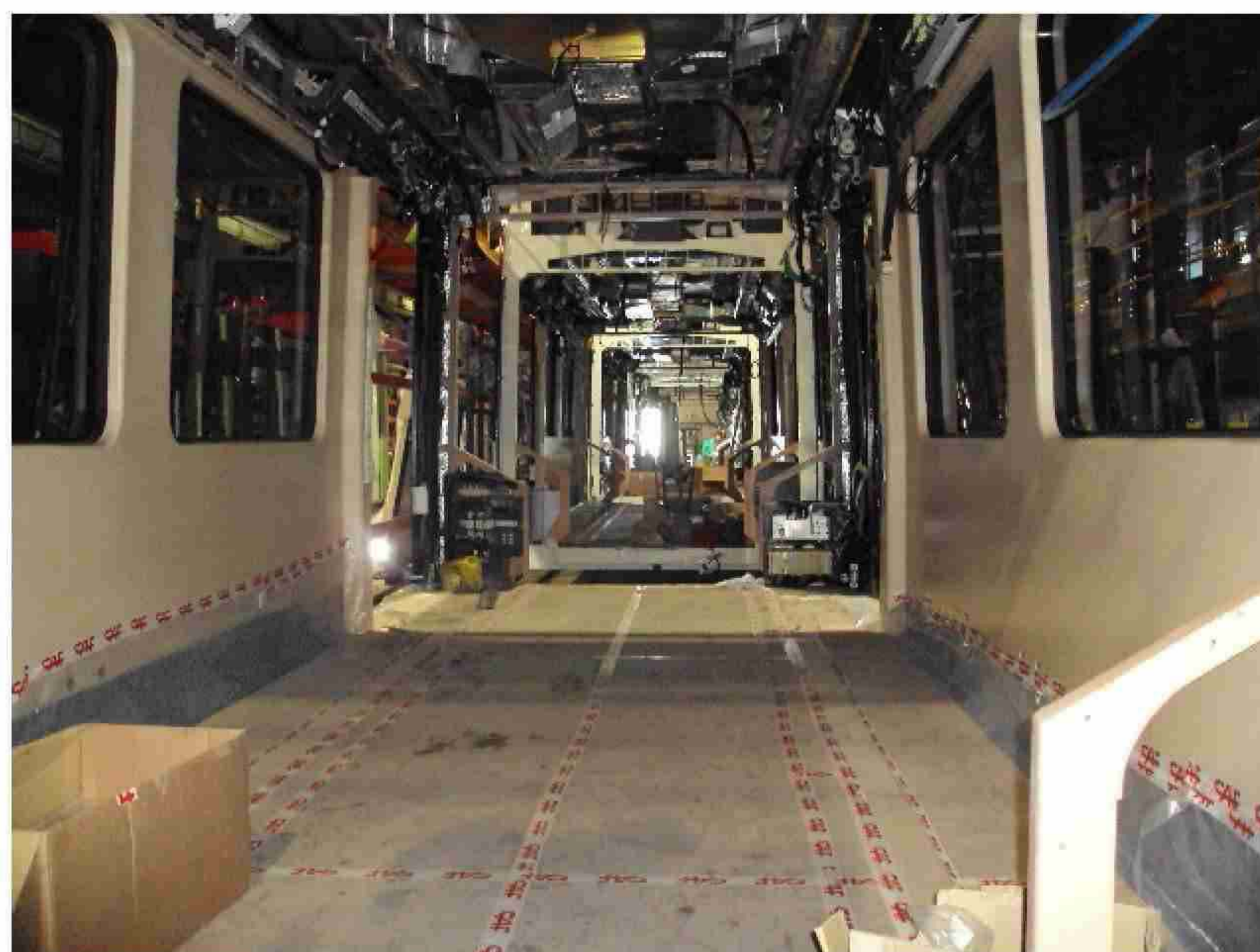


C-03; F-03 & E03



B-04

INFORME DE AVANCE DE FABRICACIÓN
MANUFACTURING STATUS
"EDINBURGH TRAM"



D-04



A-04

INFORME DE AVANCE DE FABRICACIÓN
MANUFACTURING STATUS
"EDINBURGH TRAM"



E-07

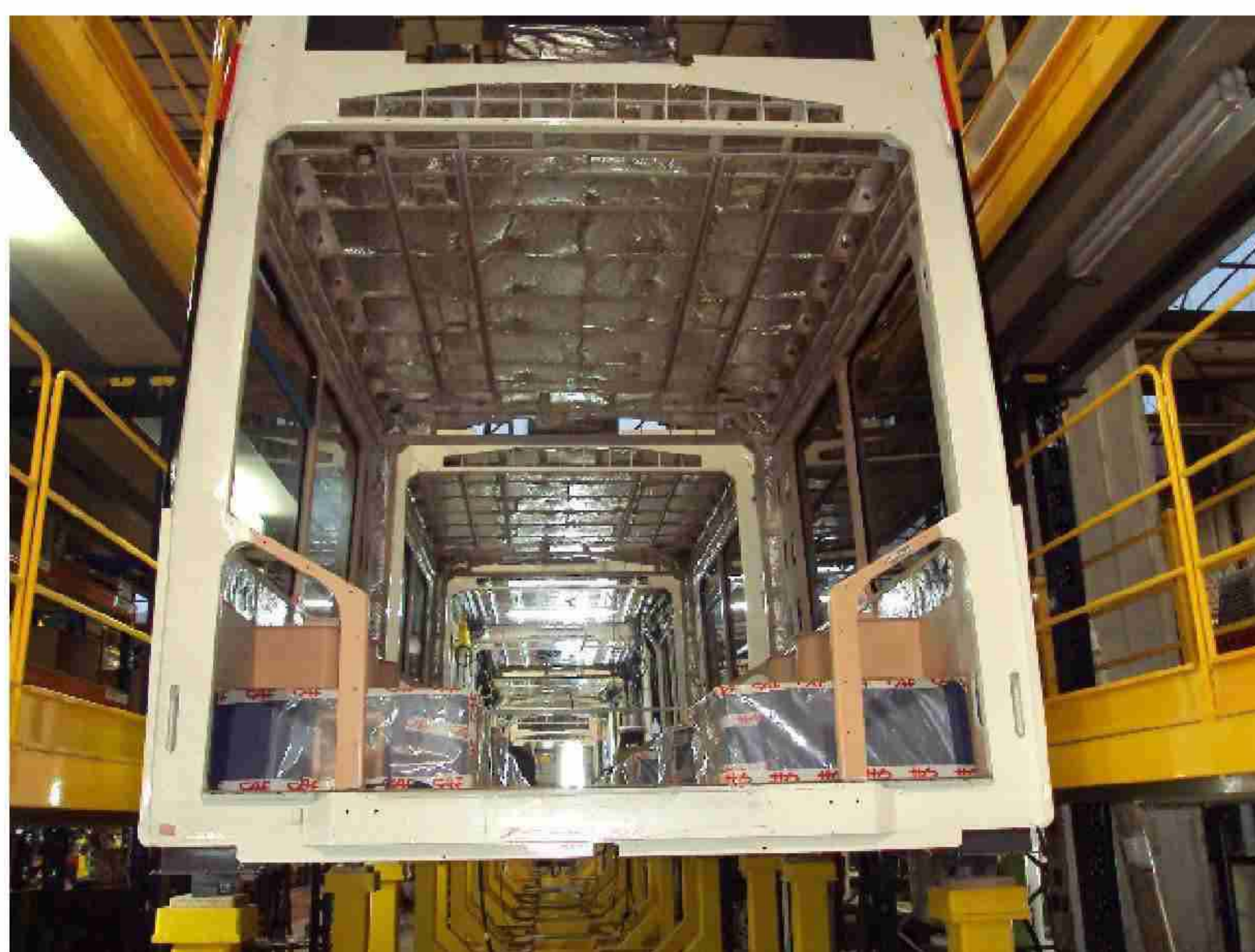


C-07

INFORME DE AVANCE DE FABRICACIÓN
MANUFACTURING STATUS
"EDINBURGH TRAM"



F-05



G-06

**INFORME DE AVANCE DE FABRICACIÓN
MANUFACTURING STATUS
"EDINBURGH TRAM"**



A-03 & B-03

2.-MONTAJE DE APARATOS EN CUBIERTA / ROOF EQUIPMENT ASSEMBLY



A-04

**INFORME DE AVANCE DE FABRICACIÓN
MANUFACTURING STATUS
"EDINBURGH TRAM"**

3.-PROCESO DE PINTURA / PAINTING PROCESS



F-09



A-10

INFORME DE AVANCE DE FABRICACIÓN
MANUFACTURING STATUS
"EDINBURGH TRAM"



C-09; F-09

**INFORME DE AVANCE DE FABRICACIÓN
MANUFACTURING STATUS
"EDINBURGH TRAM"**

UNIT	STATUS
A-1	Testing area. Factory tests
B-1	Testing area. Factory tests
C-1	Testing area. Factory tests
F-1	Testing area. Factory tests
G-1	Testing area. Factory tests
D-1	Testing area. Factory tests
E-1	Testing area. Factory tests

UNIT	STATUS
A-2	Testing area
B-2	Testing area
C-2	Testing area
F-2	Testing area
G-2	Testing area
D-2	Testing area
E-2	Testing area

UNIT	STATUS
A-3	Finishing process completed
B-3	Finishing process completed
C-3	Finishing process completed
F-3	Finishing process completed
G-3	Finishing process completed
D-3	Finishing process completed
E-3	Finishing process completed

UNIT	STATUS
A-4	Finishing process
B-4	Finishing process
C-4	Finishing process
F-4	Finishing process
G-4	Finishing process
D-4	Finishing process
E-4	Finishing process

INFORME DE AVANCE DE FABRICACIÓN
MANUFACTURING STATUS
"EDINBURGH TRAM"

UNIT	STATUS
A-5	Finishing process
B-5	Finishing process
C-5	Finishing process
F-5	Finishing process
G-5	Finishing process
D-5	Finishing process
E-5	Finishing process

UNIT	STATUS
A-6	Finishing process
B-6	Finishing process
C-6	Finishing process
F-6	Finishing process
G-6	Finishing process
D-6	Finishing process
E-6	Finishing process

UNIT	STATUS
A-7	Finishing process
B-7	Finishing process
C-7	Finishing process
F-7	Finishing process
G-7	Finishing process
D-7	Finishing process
E-7	Finishing process

UNIT	STATUS
A-8	Finishing process
B-8	Finishing process
C-8	Finishing process
F-8	Finishing process
G-8	Finishing process
D-8	Finishing process
E-8	Finishing process

UNIT	STATUS
A-9	Painting process
B-9	Painting process
C-9	Painting process
F-9	Painting process
G-9	Painting process
D-9	Painting process
E-9	Painting process

**INFORME DE AVANCE DE FABRICACIÓN
MANUFACTURING STATUS
"EDINBURGH TRAM"**

UNIT	STATUS
A-10	Painting process
B-10	Bodyshell assembly finished. To begin the process of painting
C-10	Bodyshell assembly finished. To begin the process of painting
F-10	Bodyshell assembly finished. To begin the process of painting
G-10	Bodyshell assembly finished. To begin the process of painting
D-10	Bodyshell assembly finished. To begin the process of painting
E-10	Bodyshell assembly finished. To begin the process of painting

UNIT	STATUS
A-11	Bodyshell assembly finished. To begin the process of painting
B-11	Bodyshell assembly finished. To begin the process of painting
C-11	Bodyshell assembly finished. To begin the process of painting
F-11	Bodyshell assembly finished. To begin the process of painting
G-11	Bodyshell assembly finished. To begin the process of painting
D-11	Bodyshell assembly finished. To begin the process of painting
E-11	Bodyshell assembly finished. To begin the process of painting

UNIT	STATUS
A-12	Bodyshell assembly finished. To begin the process of painting
B-12	Bodyshell assembly finished. To begin the process of painting
C-12	Bodyshell assembly finished. To begin the process of painting
F-12	Bodyshell fabrication
G-12	Bodyshell assembly finished. To begin the process of painting
D-12	Bodyshell fabrication
E-12	Bodyshell assembly finished. To begin the process of painting

INFORME DE AVANCE DE FABRICACIÓN
MANUFACTURING STATUS
“EDINBURGH TRAM”

UNIT	STATUS
A-13	Bodyshell assembly finished. To begin the process of painting
B-13	Bodyshell fabrication
C-13	Bodyshell assembly finished. To begin the process of painting
F-13	Bodyshell fabrication
G-13	Bodyshell fabrication
D-13	Bodyshell fabrication
E-13	Bodyshell fabrication

Signed: Idoia Garmendia
CAF Q.A.

10.5 RFI Register

Civil Process Register

Company Bilfinger Berger Civil
Channel ETN (<http://etn.mybiw.com>)



Status	System Ref	WorkPackage Ref	Publishing Company	Title	Content	Publishing User	Issued Date
Open	RFI-00247		Bilfinger Berger Civil	North St Andrews St - Scottish Power - MUDFA issue	Please provide as built of diverted Scottish Power utility that is within the utility	Simon Nesbitt	12/08/2009
Open	RFI-00255		Bilfinger Berger Civil	Splitter Island Ch130+280	Traffic island to Ch130+280 has to be installed into its original position.	Iain Crawford	20/11/2009

System Process Register

Company Bilfinger Berger Civil
Channel ETN (<http://etn.mybiw.com>)

SIEMENS

Status	System Ref	WorkPackage Ref	Publishing Company	Title	Content	Publishing User	Issued Date
Needs further clarification	RFI-00065	BSC-64	Siemens Transportation Systems	RFI 065 - ELECTRICITY AND METER SUPPLIER	ELECTRICITY AND METER SUPPLIER Issued 03.07.08	Roland Brueckmann	24/07/2008
Needs further clarification	RFI-00074	BSC-73	Siemens Transportation Systems	RFI 074 - WASHING PLANT DESIGN	WASHING PLANT DESIGN Issued 11.07.08	Norbert Wunder	24/07/2008
Needs further clarification	RFI-00077	BSC-76	Siemens Transportation Systems	RFI 077 - RE-ISSUE OF RFI 067	RE-ISSUE OF RFI 067 Issued 14.07.08	Robert Kraemer	24/07/2008
Needs further clarification	RFI-00099	BSC-98	Siemens Transportation Systems	RFI 00099-ETN(DWE)TIE&ABC050014_Compresse	Following previous versions of the ER the technical proposal for the DWE considers a Compressed Air	Robert Kraemer	15/08/2008
Needs further clarification	RFI-00215		Siemens Transportation Systems	TRAMSTOP CABINET KEY SUITE SYSTEM INFORMATION	Can TIE please provide the following:-	Michael Wilken	06/04/2009
Needs further clarification	RFI-00218		Siemens Transportation Systems	Ingliston Park and Ride existing CCTV cameras.	Section 35.9.1 of the ER (issue 4) states that "The ODN also needs to allow for 7	Michael Wilken	06/04/2009
Needs further clarification	RFI-00219		Siemens Transportation Systems	Facilities to be provided at emergency/backup control room?	Section 35.11.1 of the ER states "The ODN shall support the emergency relocation of	Michael Wilken	06/04/2009
Needs further clarification	RFI-00222		Siemens Transportation Systems	Lift operation at Murrayfield tramsop.	Section 35.8.1 of the ER (issue 4) states "Each Tramstop platform shall be equiped	Michael Wilken	06/04/2009
Needs further clarification	RFI-00223		Siemens Transportation Systems	Additional PHP call handler?	Within the Railcom Manager Outline Design review item 4.8 states "PHP call	Michael Wilken	10/04/2009
Needs further clarification	RFI-00239		Siemens Transportation Systems	Provision of timetable and timetable data	Please would tie provide to BSC an initial operational timetable including:	Michael Wilken	15/06/2009
Needs further clarification	RFI-00240		Siemens Transportation Systems	Definition of user categories for Control Centre	During the Signalling Design Review Meeting on 24 March 2009 it has been agreed	Michael Wilken	15/06/2009
Needs further clarification	RFI-00243		Siemens Transportation Systems	Location of playback facilities within Gogar Depot?	Section 35.14.13 of the Employer's Requirements (issue 4) states that "The system	Michael Wilken	07/07/2009
Open	RFI-00251		Siemens Transportation Systems	EMC Assessment of new A2B electric rolling stock	Please see attached RFI.	Michael Wilken	18/09/2009

CEC00624424_0148

Bilfinger Berger – Siemens – CAF Consortium

10.6 Civil Works Procurement Schedule



Subcontract Procurement / Register Contract : Edinburgh Tram Network					PROGRAMME REQUIREMENTS																	PROCESSES									
Enquiry Ref Number	Subcontract Trade	Section	Company	Prospective Companies	Enquiry Needs Sent Out By (F74-3)	Status	Order Needs Placed By	Status	Letter of Intent Issued / Limited Order to Proceed	Required for Start on Site	Design Package Issued for Construction	F74-1 Subcontract Questionnaire	F519-1 Subcontract Questionnaire	F74-4 Pre-Award/ Start Meeting	F74-5 Quality Plan	Authority to Place Order	CI 28.2 Approval	F74-9 Questionnaire Review	Order Issued	Order Back	F74-11 Starter Form	F74-2 Performance Review									
1	Land Surveys (SW)	SW	Becker Geomatics Ltd		KB	n/a	✓	n/a	✓	n/a	n/a	✓		✓			n/a		✓	✓	✓										
2	Tree Felling / Advance Works (SW)	SW	W Laing		JT	n/a	✓	n/a	✓	n/a				✓			n/a		✓	✓	✓										
3	Site Clearance / Civils Package (7A)	7A	Farrans (Construction) Ltd		DG	n/a	✓	n/a	✓	n/a		✓	✓				n/a		✓		✓										
4	Setting Out Engineers / Advance Works	SW	Beattie Chalmers Ltd		JT	n/a	✓	n/a	✓	n/a		n/a					n/a		✓	✓	✓										
5	Demolition of Caley Alehouse	2A	John Graham (Dromore) Ltd		DG	n/a	✓	n/a	✓	16-Jun-08		✓	✓				n/a		✓		✓										
9	Existing Road Surveys	SW	Mouchel		KB	n/a	✓	n/a	✓	23-Jun-08		✓		✓			n/a		✓	✓	✓										
10	Erection of Temporary Trackside Fencing	5	Lumberjax Environmental		JT		✓		✓	21-Jun-08					✓		n/a		✓	✓	✓										
11	Civils Package	7A/5C		Farrans	DG	16-Jun-08		28-Jul-08		06-Aug-08	04-Aug-08	✓	✓	✓			✓				✓										
12	Civils Package	2A1D5A		John Graham (Dromore) Ltd	GA	23-Jun-08		21-Jul-08			02-Mar-09																				
14	Advisory Services	SW	Hill International UK Ltd		KB																										
17	Temporary Works Design	SW	Tony Gee		TG	12-May-08	✓	23-Jun-08		30-Jun-08	n/a	✓	✓				n/a	✓			✓										
18	Formwork, Rebar, Concrete	5	Expanded Ltd		GA	23-Jun-08	✓	21-Jul-08		29-May-09	18-Aug-08	✓	n/a					✓													
20	PC Beams	5	Banagher		TG	23-Jun-08	✓	20-Oct-08	✓		01-Dec-08																				
21	Site Clearance	5	Edinburgh Woodland		JT	04-May-09	✓	19-May-09	✓	n/a	25-Jun-09			✓					✓	✓	✓										
24	Photography	SW	White House Studios		KB	04-Jun-08	✓	16-Jul-08	✓	n/a	23-Jul-08	✓	n/a	✓	n/a		n/a	n/a	✓	✓	✓										
25	Structural Steel	5	Fairfield Mabey		GA	Jan 08	✓			26-Jun-08	01-Dec-08	✓	n/a								✓										
26	Traffic Management (SW)	SW	Class One		TG		✓	22-Jul-08		22-Jul-08	05-Aug-08	✓	✓	✓	✓																
30	Deck waterproofing & Surface Treatment	SW		Universal Sealants, Pitchmastic, Stirling Loyd	DG																										
31	Metal railings and handrailing	SW		DE Fencing, JKF	DG																										
34	Designers	SW	Parsons Brickerhoff		KB												n/a					✓									
38	Civils Package	6	Barr Ltd		DG	26-May-08	✓	07-Jul-08	✓	02-Jun-08	04-Aug-08	✓		✓			✓		✓	✓											
42	Property Conditions Survey	SW		DM Hall / PT / DTZ	DG																										
44	Site Investigation Works	5	Raeburn		JT	02-Jun-08	✓	30-Jun-08		n/a	07-Jul-08			✓	n/a				✓	✓	✓										
45	Civils Package	1B	Crummock		DG	04-Aug-08	✓	10-Oct-08		10-Sep-08	06-Oct-08	✓	✓	✓	✓	✓	✓				✓										
46	Civils Package	1D	MacKenzie		DG	04-Aug-08	✓	27-Oct-08		17-Dec-08	05-Jan-09	✓	✓	✓		✓	✓	✓			✓										
48	Control Network Survey Check - Site Wide		L & M Surveys		KB	03-Jul-08	✓	14-Jul-08		n/a	14-Jul-08	✓	n/a	✓	n/a		n/a	✓	✓	✓	✓										
49	Utility Diversions	SW		Core Construction, Clancy Docwra, Intuto	DG	14-Jul-08	✓																								
53	Acoustic Monitoring	SW	RMP Acoustic Consultants		KB	n/a		20-Jul-08	✓		27-Jul-08	✓	✓	✓			n/a		✓	✓	✓										
55	BT Duct & Cable works	SW	Fujitsu		CF	n/a		12-Oct-09	✓		20-Oct-09	✓	n/a	✓		✓			✓	✓	✓										
58	Ecologist	SW	JDC Ecology Ltd		KB									✓					✓	✓	✓										
65	Supply of CRE	SW	Siemens TS		SK	n/a		n/a	✓	n/a	n/a	n/a	n/a	n/a	n/a		n/a	n/a	✓	✓											
68	W3 & W4 Piling	5A	Expanded Ltd		GA																										
70	Groundworks	5	Gallagher Goundworks		SK	25-Jul-08	✓	04-Aug-08	✓	n/a	11-Aug-08						n/a		✓	✓	✓										
73	Edinburgh Park Hoarding	5	Rapid Hoard Ltd		JT	01-Aug-08	✓	15-Aug-08	✓	n/a	29-Aug-08	✓	✓	✓			n/a		✓	✓	✓										
74	A8 Underpass	5	Expanded Piling Ltd		GA	06-Aug-08	✓	03-Sep-08	✓	15-Sep-08	15-Sep-08	✓	✓	✓	✓	✓	✓	✓			✓										
77	Temporary Traffic Signals	SW			DG					n/a	02-Oct-08	n/a					n/a														
80	Welding Services		Andrew Turner		JA	n/a		19-Sep-08	✓	n/a	23-Sep-08	n/a	n/a	n/a	n/a		n/a	n/a	✓	✓	✓										
81	Edinburgh Park Structure	5	Expanded Structures Ltd		GA	03-Oct-08	✓	n/a		05-Nov-08	Nov 08	✓	n/a	✓		✓	✓	✓			✓										
82	Japanese Knotweed Eradication	5	TCM Ltd		GA	16-Sep-08	✓	n/a	✓	30-Sep-08	20-Oct-08	✓	n/a	✓	n/a			✓	✓	✓	✓										
84	Site Clearance	5	D Methuen Turnstone Ltd		JT	n/a		15-Sep-08	✓	n/a	16-Sep-08		n/a	✓	n/a			n/a	✓	✓	✓										
85	Traffic Management Design		Faber Maunsell		SK	12-Sep-08	✓	08-Oct-08	✓	n/a	10-Oct-08		n/a			✓			✓	✓	✓										

Key: F74-1 Subcontractor Questionnaire; F74-2 Subcontract Performance Appraisal; F74-3 Subcontract Enquiry (letter); F74-4 Subcontractor Pre-Award/ Start Meeting; F74-5 Subcontract Quality Plan; F519-1 Subcontract Environmental Questionnaire

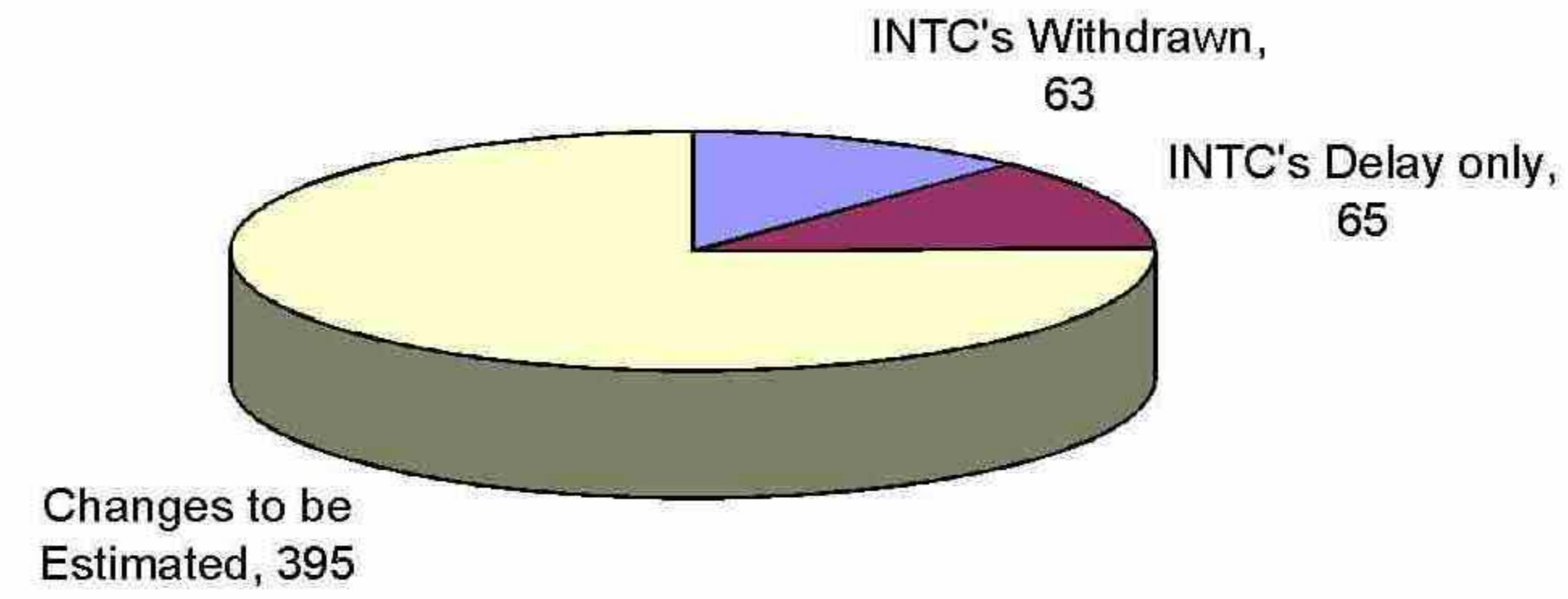
CEC00624424_0150

Subcontract Procurement / Register Contract : Edinburgh Tram Network				BILFINGER BERGER UK Limited										Appendix 10.6									
				PROGRAMME REQUIREMENTS										PROCESSES									
ID	Description	Code	Contractor	Category	Start	End	Start	End	Start	End	Start	End	Start	End	Start	End	Start	End	Start	End			
86	Steel Foundations	S27	Steel Foundations Ltd	DT			14-Oct-08	15-Oct-08			✓	n/a	✓		✓		✓			✓			
87	Temporary Sheet Piling Carrick Knowe	S23	McGrattan Piling Ltd	DT	06-Oct-08	✓	20-Oct-08		05-Nov-08	20-Nov-08			✓	n/a	✓				✓		✓		
88	Civils Package	1A1	Included in 89	SK	03-Oct-08	✓							✓	n/a						✓			
89	Civils Package	1A2	McKean	SK	03-Oct-08	✓	02-Sep-09		10-Jun-09	13-Jul-09			✓	n/a						✓			
90	W1, S16, S17 - Structures	1A	Included in 89	SK	03-Oct-08	✓							✓	n/a						✓			
91	Temporary Traffic Signals		Lochwynd	SK			21-Nov-08	✓		12-Dec-08			✓	n/a		✓	✓			✓	✓	✓	
95	Site Clearance	5B / 5C	MW Groundworks Ltd	JT	28-Nov-08	✓	12-Dec-08		n/a	22-Dec-08			✓	n/a	✓	n/a				✓	✓	✓	
96	Fencing to Consortium Office		William Houston Landscaping	JT	19-Dec-08	✓	16-Jan-09		n/a				✓	n/a		n/a				✓	✓	✓	
100	Temporary Traffic Signals	1	Siemens Traffic Controls	SK				✓	09-Jan-09	10-Jan-09			n/a	n/a	n/a	n/a	✓	✓	n/a	✓	✓	✓	
101	Amendments to Existing Traffic Signals	1	Telent	SK	n/a		19-Jan-09	✓	n/a	26-Jan-09			✓	n/a		✓	n/a			✓	✓	✓	
102	Amendments to Existing Traffic Signals	1	Peek	SK	n/a		19-Jan-09	✓	n/a	26-Jan-09			✓	n/a	n/a	✓	✓	n/a	✓	✓		✓	
104	Civils Package	1C2	RJ McLeod, Barr Ltd, McKeen, Land Engineering, Malcom Group, WJ Harte	SS										n/a									
107	A8 Underpass Sheet Piling	5C	McGrattan Piling Ltd	DAT	01-Nov-08		16-Mar-09	✓	05-Mar-09	06-Apr-09			✓		✓							✓	
	Section 5 Civils	5	McKean, DCT, Dunnes, Expanded, Farrans, Malcolms	DAT	30-Nov-08		13-Jul-09																
	Tramstop Shelters & Ancillary Equipment	SW	Broxap, McGrath, RWS, Clearchannel, Macemain	SK	01-Mar-09	✓							✓	n/a									
108	Substation Prefab Buildings	SW	Gladson, Portastor	SK	01-Mar-09	✓							✓	n/a									
109	Streetlighting	SW	BEAR, Harte, Pegasus, SBContracts, Lightways, Edminston & Brown, Orion	SK	17-Jul-09	✓								n/a									
110	Temporary Lighting	5B	City of Edinburgh Council	JL	02-Jun-09	✓	13-Jul-09		26-Jun-09	27-Jun-09			✓	n/a							✓		
111	Environmental Emergency Response	SW	DAMM Environmental Ltd	JL	04-May-09	✓	04-Jun-09		26-Jun-09	26-Jun-09			✓	n/a	✓		✓			✓	✓	✓	
112	OHLE Piling Contractors (Guided Busway)	5	MG Construction	JL		✓			07-Aug-09	24-Aug-09			✓	n/a	✓		✓			✓		✓	

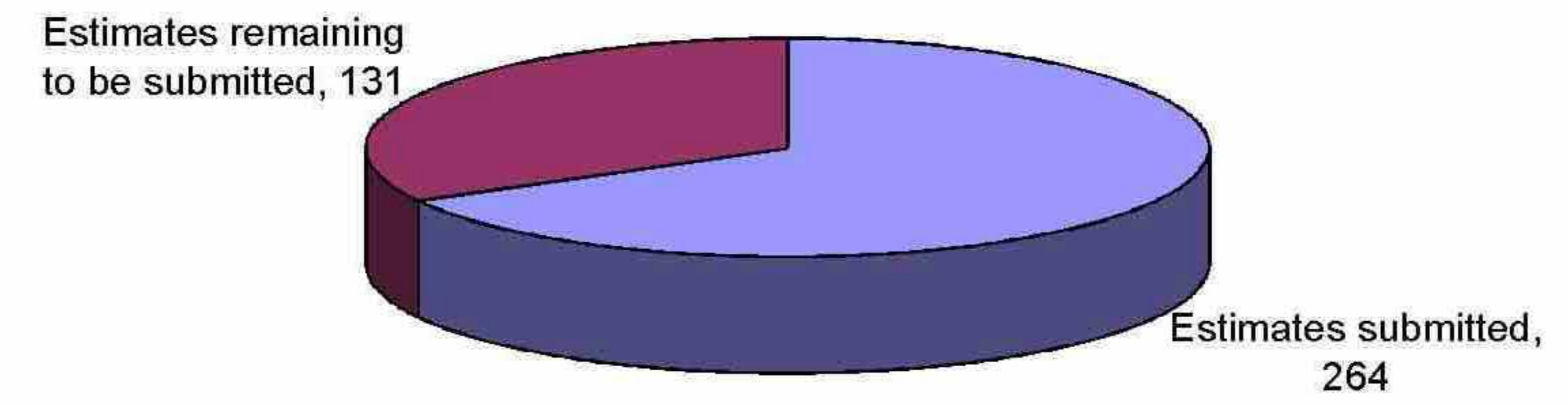
CEC00624424_0151

10.7 Change Register

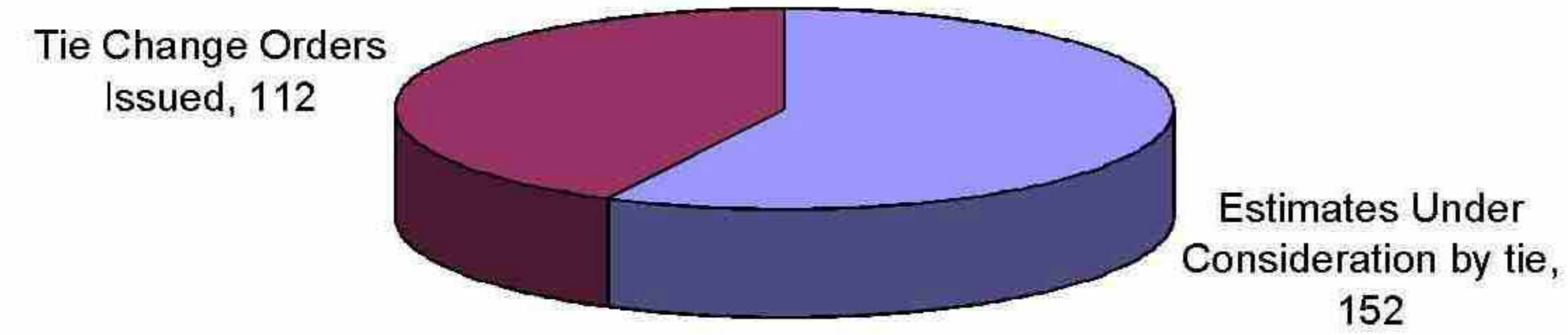
Overall Changes (TCN's & INTC's)
Total 523



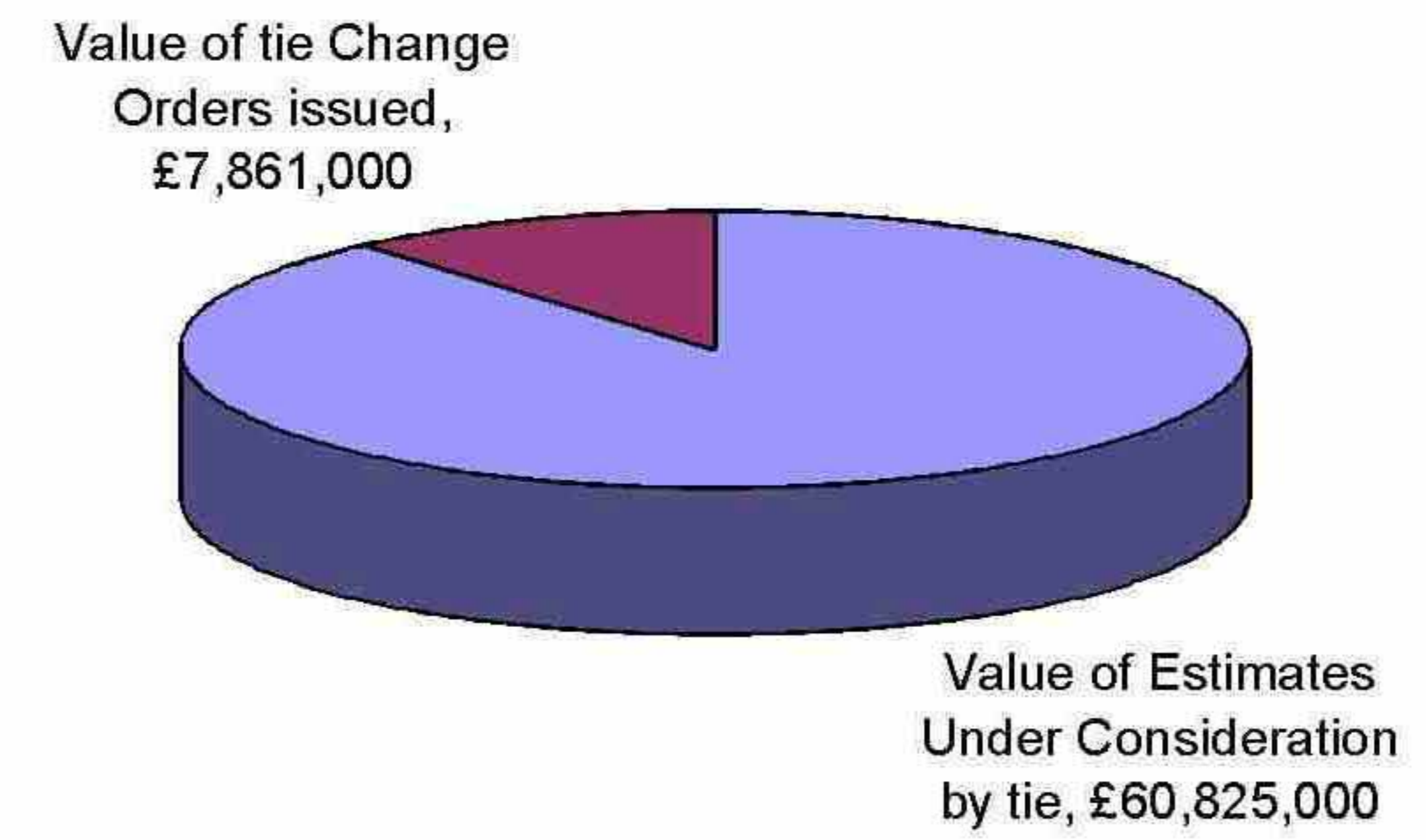
Overall Estimates (TCN's & INTC's)
Total 395



Overall Estimates (TCN's & INTC's) submitted and Tie Change Orders Issued
Total 264



Value of TCN's & INTC's submitted VS Tie Change Orders Issued



ETN INFRACO NOTIFICATION of the CHANGE (INTC) CONFIDENTIAL		Withdrawn/Superseded/no cost Delay Only Change Order issued										Value Estimate (GBP)										Allocation of Cost		Section		Change Order Value			
Ref	Ret.	Change Order TCO	Description	Date Notified	Date of further letters	Letter Ref	Agreed in principle	TNC?	Estimate issued?	Change Order?	Type	Change Type	Pricing Method	Value Estimate (GBP)						£ Agreed	£ Not Agreed	Psu or VE	Number	See Notes	Location				
								1=Y	1=Y, 0=N	1=Y	See Notes	See Notes	See Notes	SDS	Bilfinger	Siemens	CAF	Sub-total	UH & P	Consortium Prelims	Other Prelims	Total							
49	6		TNC 6 - Bernard Street Public Realm Works	24/06/2008	09/04/08 2/05/08 28/05/08 12/06/08 12/06/08 12/06/08	EBMie-EmailBernard St Layout bbtie-email - 1 ramstop SDS-ULE90130-01-LET-00645 Email bba/C/C - Prior App Sub SDS-ULE90130-01-LET-00695 EBMie-Email Paving tie- INF CORR 009 25.1.201/UL324 tie- INF CORR 121 25.1.201/UL456 Email EB-Cummed-paving SDS-ULE90130-01-LET-00813 tie- INF CORR 177 25.1.201/UL560 e-mail Little (Programme) 25.1.201/UL760 25.1.201/MRH05 tie INF CORR 278 25.1.201/UL996 tie INF CORR 409 25.1.201/MRH1016 tie INF CORR 464 25.1.201/UL1126 tie INF CORR 537 25.1.201/MRH1247 tie INF CORR 1218/00 25.1.201/UL2295	1	1	1	1	4	1,2 & 3	0	1,046,220	0	0	0	1,046,220	0	77,420	183,088	1,306,728	720,356	586,372	N/A		1A	0	
50		22	Various Traffic Signal requirements to letter INF_CORR_038 16/7/8	16/07/2008	07/02/08 16/07/08 07/08/08 09/09/08 24/09/08 18/12/08 04/01/09 11/03/09 04/06/09	25.1.201/TM100 tie- INF CORR 038 ETN(BSC)TIE & ABC tie INF CORR 081 ETN(BSC)TIE\$CC&ABC#60039 tie INF CORR 183 tie INF CORR 537 25.1.201/MRH1247 tie INF CORR 840 ETN(BSC)TIE\$SPM&ABC#053430	1	1	1	1	1	1	U	U	31,188	U	31,188	incl	incl			31,188	30,560	638	N/A	1	30,560		
51	2	6	TNC002 - Utilities diversions & associated works deemed more suitable for inclusion with Infraco works rather than MUDFA works. Issued with drawings & schedule. Section 5a.	06/06/2008	27/05/08 23/07/08 26/07/08 07/08/08 14/08/08 20/08/08 21/08/08 17/09/08 17/09/08 08/10/08 08/10/08 09/10/08 09/10/08 16/10/08 22/10/08 24/10/08 1/11/08 20/11/08 26/11/08 03/12/08 10/12/08 12/12/08 18/12/08 18/12/08 05/01/09 20/01/09 26/01/09 06/03/09 16/03/09 09/04/09 09/04/09	tie-PRO CORR 48 25.1.201/GC181 25.1.201/JH/289 25.1.201/UL307 tie INF CORR 083 25.1.201/TMG74 25.1.201/UL386 25.1.201/UL393 tie- INF CORR 158 tie- INF CORR 159 e-mail Infraco-SDS (MRH) 25.1.201/UL638 25.1.201/UL648 25.1.201/UL654 tie INF CORR 244 25.1.201/UL746 tie INF CORR 281 tie INF CORR 387 25.1.201/MRH1973 25.1.201/MRH1040 tie INF CORR 451 25.1.201/MRH1114 tie INF CORR 508 25.1.201/MRH1209 tie INF CORR 489 25.1.201/UL1232 tie INF CORR 806 25.1.201/MRH1297 tie INF CORR 869 25.1.201/MRH1940 tie INF CORR 1019MP tie INF CORR 1210MP	1	1	1	1	1	3	U	60,439	U	U	60,439	U	4,472	10,577	75,488	64,912	10,577	N/A		5A	64,912		
52	3	7	TNC003 - Utilities diversions & associated works deemed more suitable for inclusion with Infraco works rather than MUDFA works. Issued with drawings & schedule. Section 5b.	06/06/2008	11/07/08 23/07/08 26/07/08 20/08/08 21/08/08 09/09/08 17/09/08 08/10/08 16/10/08 27/10/08 30/10/08 1/11/08 20/11/08 26/11/08 03/12/08 10/12/08 12/12/08 18/12/08 18/12/08 05/01/09 20/01/09 26/01/09 06/03/09 16/03/09 09/04/09 16/04/09 11/05/09 16/05/09 23/05/09	SDS-ULE90130-01-LET-00721 25.1.201/JH/289 25.1.201/UL306 25.1.201/UL386 25.1.201/UL393 25.1.201/UL593 25.1.201/JH/469 tie INF CORR 158 e-mail Infraco-SDS (MRH) tie INF CORR 244 tie INF CORR 275 25.1.201/UL611 tie INF CORR 387 25.1.201/MRH1973 tie INF CORR 416 25.1.201/MRH1041 tie INF CORR 453 25.1.201/MRH1115 tie INF CORR 508 25.1.201/MRH1209 tie INF CORR 490 25/201/UL1231 tie INF CORR 807 25.1.201/MRH1292 tie INF CORR 870 25.1.201/MRH1939 tie INF CORR 1210MP 25.1.201/MRH2303 tie INF CORR 2346/SC 25.1.201/MRH2520 tie INF CORR 1985/RB	1	1	1	1	1	3	0	70,478	0	0	70,478	0	5,215	12,334	88,027	75,694	12,334	N/A		5B	75,694		

CEC00624424_0159

ETN INFRACO NOTIFICATION OF CHANGE (INTC)
CONFIDENTIAL



Withdrawn/Superseded/info cost
Delay Only
Change Order Issued

Ref	Item No.	Item Title	Description	Date Notified	Date of further letters	Letter Ref	Agreed in principle	TNC?	Estimate issued?	Change Order?	Type	Change Type	Pricing Method	Value Estimate (GBP)						Section	Location	Change Order Value							
														£ Agreed	£ Not Agreed	£ Submitted	Other Persons	Construction	U&P				Other Persons	Sub-total	£ Not Agreed	£ Agreed	£ Not Agreed	£ Agreed	£ Not Agreed
78			Design Only for alterations to design of Edinburgh Airport rampstop and retaining wall design at Jubilee Hoop as the letter INF_CUHR U/2 dated 5th August 2018	02/09/2018			1		1		M	4	4	41,414	0	41,414	0	41,414	0	41,414	0	48,620	0	48,620	0	0	7		0
79			Instruction from CEC to design an alternative layout for Haymarket Junction.	08/09/2018			1		1		M	4	4	44,436	0	44,436	0	44,436	0	44,436	0	52,168	0	52,168	0	0	1D		0
80			Signature Retaining Wall - CEC has written to inform that the wall per FB letter ULES01330/UT-LET-00089 dated 9 September.	08/09/2018			1		1		M	4	4	4,258	0	4,258	0	4,258	0	4,258	0	4,999	0	4,999	0	0	7		0
81			Environmentally friendly Lighting - ULC have requested using 42-watt pin lamp rather than the 70-watt LCO (white light) as per letter ULES01330/SW-LET-01168 dated 2 September 2018.	08/09/2018			1		1		M	1	4	9,378	0	9,378	0	9,378	0	9,378	0	11,010	0	11,010	0	0	AI		0
82			Contamination by leachate Oil pollution Contaminated material Household waste Sant Equivale	28/09/2018					N/A		M	1	4	0	0	0	0	0	0	0	0	0	0	0	0	0	AI		0
83			Waste Management - temporary traffic signals	21/09/2018					N/A		D	1	4	0	0	0	0	0	0	0	0	0	0	0	0	5A		0	

ETN INFRACO NOTIFICATION of the CHANGE (INTC)		Withdrawn/Superseded/no cost										Change Order issued										Location						
CONFIDENTIAL		Delay Only										Change Order issued																
Ref	Ret.	Change Order	Description	Date Notified	Date of further letters	Letter Ref	Agreed in principle	TNC?	Estimate issued?	Change Order?	Type	Change Type	Pricing Method	Value Estimate (GBP)						Allocation of Cost		Section	Change Order Value					
	the	TCO						1=Y	1=Y, 0=N	1=Y	See Notes	See Notes	See Notes	£ Submitted	UH & P	Consortium Prelims	Other Prelims	Total	£ Agreed	£ Not Agreed	Psrm or VE	Number	See Notes					
90			Change order request: SDS Development Workshop Attendance	31/07/2008	30/04/08 24/04/08 21/09/08 26/09/08 16/12/08 18/12/08 07/01/09 23/02/09 12/03/09	PO CORR 066S/US ULE90130-SW-LET-01065 25.1.201/JHW/525 tie- INF CORR 102 25.1.201/JHW/541 25.1.201/JHW/1181 tie INF CORR 537 25.1.201/MRH/1247 SDS-ULE90130-SW-LET-01404 25.1.201/BOC/1909						1		0	0	0	0	0	0	0	0	0	0	N/A	AI	0		
91		98	Confirmation of Verbal Instruction Reference ETN002 - Compensation Event Notice Edinburgh Park Structure (S21) earthworks/foundations.	10/09/2008	02/10/08 03/10/08 23/10/08 30/10/08 06/11/08 12/01/09 06/03/09 04/09/09 06/09/09 09/10/09 20/10/09	25.1.201/MRH/479 25.1.201/JHW/440 tie- INF CORR 204 25.1.201/JHW/566 tie INF CORR 306 25.1.201/BOC/689 25.1.201/MRH/272 tie INF CORR 869 tie INF CORR 2265/CB 25.1.201/CF/5451 tie INF CORR 2636/FD 25.1.201/MRH/5944	1		1	1	1	1,2,3	0	41,945	0	0	0	41,945	incl	3,104	7,340	52,389	52,389	0	N/A	5B	52,389	
92			Design the Huxell Road retaining wall to ensure that this avoids clashing with the existing sewer as per te letter INF_CORR_051 dated 23/07/08.	11/09/2008	23/07/08 24/07/08 02/09/08 29/09/08 02/10/08 09/10/08 15/10/08 22/10/08 29/10/08 05/11/08 12/11/08 20/11/08 20/11/08 12/12/08 17/12/08 26/03/09 27/04/09 22/05/09 02/09/09	INF CORR 151 25.1.201/JHW/113 SDS-ULE90130-05-LET-00324 25.1.201/JHW/487 SDS-ULE90130-SW-LET-0390 25.1.201/JHW/574 SDS-ULE90130-SW-LET-01230 tie INF CORR 235 25.1.201/JHW/737 tie INF CORR 280 25.1.201/JHW/640 tie INF CORR 265 25.1.201/BOC/979 25.1.201/BOC/976 tie INF CORR 520 25.1.201/JHW/198 SDS-ULE90130-SW-LET-01480 25.1.201/JHW/2420 25.1.201/JHW/2901 SDS-ULE90130-SW-LET-01699							U	U	U	U	U	U	U	U	U	U	N/A	5A	U			
93			Lindsay Road, Ocean Drive, Ocean Terminal & Lower Place Planning Permission	24/09/2008	20/10/08 24/10/08 12/11/08 16/12/08 18/12/08 07/01/09	25.1.201/JHW/248 tie INF CORR 766 25.1.201/BOC/693 25.1.201/JHW/1181 tie INF CORR 537 25.1.201/MRH/1247			1			M	1	4	40,137	440	0	0	40,577	4,058	3,003	0	47,637	0	47,637	N/A	1A	0
94			Hilton Hotel Full Planning	14/07/2008	17/06/08 28/08/08 09/09/08 22/09/08 12/11/08 16/12/08 20/02/09 17/03/09 28/08/09	PO CORR 066S/US ULE90130-07-LET-00339 25.1.201/JHW/256 tie- INF CORR 124 tie- ULE90130-07-LET-00339 25.1.201/JHW/614 25.1.201/BOC/693 25.1.201/JHW/1181 tie INF CORR 775 25.1.201/BOC/1953 tie INF CORR 2215/FD			1			D	1	4	9,349	0	0	0	9,349	935	692	0	10,976	0	10,976	N/A	7	0
95			Additional Depot Prior Approvals	14/07/2008	17/05/08 05/09/08 22/09/08 09/09/08 10/10/08 12/11/08 16/12/08 26/03/09 09/09/09	SDS-ULE90130-06-LET-00073 25.1.201/JHW/259 tie- INF CORR 059 25.1.201/JHW/299 tie- ULE90130-06-LET-00073 25.1.201/MRH/689 25.1.201/BOC/693 25.1.201/JHW/1181 SDS-ULE90130-SW-LET-01686 25.1.201/BOC/3420						D	1	4	0	0	0	0	0	0	0	0	0	0	N/A	6	0	
96			Shandwick Place DED preferential Treatments	24/07/2008	02/09/08 11/09/08 02/10/08 16/10/08 15/10/08 20/10/08 21/10/08 30/10/08 13/11/08 08/12/08 03/02/09 12/02/09 27/02/09 04/03/09 14/04/09 16/04/09 20/04/09 26/05/09 25/06/09 14/07/09 28/07/09 31/07/09 31/07/09 04/08/09 06/08/09 21/08/09 31/08/09 02/09/09 17/09/09 05/10/09 16/10/09	tie- INF CORR 054 SDS-ULE90130-01-LET-00784 25.1.201/JHW/699 25.1.201/JHW/686 SDS-ULE90130-SW-LET-01242 tie INF CORR 236 25.1.201/MRH/722 25.1.201/JHW/732 tie INF CORR 298 25.1.201/JHW/873 SDS-ULE90130-SW-LET-01314 SDS-ULE-SW-LET-01367 25.1.201/JHW/571 tie INF CORR 794 25.1.201/BOC/1799 tie INF CORR 1042 25.1.201/BOC/2315 25.1.201/JHW/2332 25.1.201/BOC/2724 ETNBSO/SDS&C&C/ABC#053499 ETNBSO/SDS&C&C/ABC#053554 tie INF CORR 1869/DS tie INF CORR 1879/DC tie INF CORR 1897/H-Met 25.1.201/IL/3239 25.1.201/MRH/5239 tie INF CORR 2083 25.1.201/ADR/3400 tie INF CORR 2239/CB 25.1.201/IL/3528 25.1.201/IL/3667 tie INF CORR 2407/RB	1		1		M	4	4	61,625	210,461	0	0	272,086	6,163	20,134	36,831	335,214	56,454	278,760	N/A	1D	0	

CEC00624424_0165

