

ETN INFRACO NOTIFICATION of the CHANGE (INTC)
CONFIDENTIAL

Ref	Rets. No	Change Order TCO	Description	Date Notified	Date of further letters	Letter Ref	Agreed in principle	TNC? 1=Y	Estimate issued? 1=Y, 0=N	Change Order? 1=Y	Type See Notes	Change Type See Notes	Pricing Method See Notes	Value Estimate (GBP)										Allocation of Cost		Section See Notes	Change Order Value	
														£ Submitted	£ Sub-total	U&P	Consortium Prelims	Other Prelims	Total	£ Agreed	£ Not Agreed	Psum or VE	Number					
126		109	Unforeseen Ground Conditions at Haymarket Viaduct	10/10/2008	13/11/08 06/11/08 23/11/08 23/02/09 06/03/09 23/03/09 30/04/09 12/06/09 12/06/09 16/04/09 03/05/09 04/05/09 22/09/09 13/11/08 16/11/08 22/11/08	25.1.201/SC660 tie INF CORR 354 25.1.201/SC1255 tie INF CORR 625 SDS-ULE90130-SW-LET-01379 25.1.201/JH/1699 tie INF CORR 903 25.1.201/SC2037 tie INF CORR 1369/TC tie INF CORR 1649/RB tie INF CORR 1655/DC 25.1.201/JH/2885 tie INF CORR 2244/SC 25.1.201/06444 25.1.201/MR/3543 25.1.201/MR/5775 25.1.201/SC2926 tie INF CORR 2659/SJ	1		1	M	1	4	0	75,514	0	0	75,514	incl	5,588	13,215	94,317	94,317	0	N/A	2	94,317		
126			Revised design for OLE-poles in Section 1B	02/10/2008	19/09/08 30/11/08 04/05/09 12/05/09	25.1.201/MR/597 ULE90130-LET-00810 (SDS) 25.1.201/JH/1431 SDS-ULE90130-SW-LET-01543 25.1.201/JH/2801							4	0	0	0	0	0	0	0	0	0	0	N/A	1B	0		
127			Split Packages for Prior Approvals- Ocean Terminal to Port of Leith.	03/10/2008	22/09/08 30/09/08 10/11/08 10/11/08 22/11/08 06/11/08 24/11/08 03/12/08 18/12/08 18/12/08 18/12/08 07/01/09 07/01/09	SDS-ULE90130-SW-LET-01217 25.1.201/JH/605 25.1.201/JH/553 tie INF CORR 220 25.1.201/JH/677 SDS-ULE90130-SW-LET-01249 25.1.201/JH/665 25.1.201/JH/677 25.1.201/JH/1081 tie INF CORR 534 25.1.201/SC301214 tie INF CORR 466 25.1.201/MR/1247 SDS-ULE90130-SW-LET-01330			1	D	1	4	4,884	0	0	4,884	488	361	0	5,734	0	5,734	N/A	1A	0			
128			CEC request for change to roads design at Edinburgh Park Station Interchange	06/10/2008	11/09/08 21/11/08 21/11/08 30/11/08	ULE90130-05-LET-00327 25.1.201/MR/615 tie INF CORR 247 25.1.201/JH/594 25.1.201/JH/432			N/A		M			U	U	U	U	U	U	U	U	U	U	N/A	5	U		
129			CEC's Request for Extension of Time for Prior Approvals 1/01a, 1/01b and 1/01c	05/10/2008	22/09/08 10/11/08 17/11/08 16/12/08	ULE90130-01-LET-00812 25.1.201/MR/620 tie INF CORR 226 25.1.201/JH/446 25.1.201/JH/1181			N/A					0	0	0	0	0	0	0	0	0	0	N/A	1	0		
130			Delay to issue of IFC Drawings for Ingliston Park and Ride Tram Stop	06/10/2008	20/08/08 15/10/08 20/11/08	ULE90130-07-LET-00364 25.1.201/MR/623 tie INF CORR 229 25.1.201/MR/724			N/A					0	0	0	0	0	0	0	0	0	0	N/A	7	0		
131			Delay to Section 1B due to MUDFA not having completed its works	08/10/2008	23/09/08 27/10/08 05/11/08 14/11/08 21/11/08 09/04/09 21/04/09	25.1.201/SC631 tie INF CORR 259 25.1.201/MR/773 tie INF CORR 326 tie INF CORR 388 25.1.201/MR/993 tie INF CORR 1204/MP 25.1.201/MR/2350			N/A					0	0	0	0	0	0	0	0	0	0	N/A	1B	0		
132			War Memorial Relocation (P-sum)	10/10/2008	23/09/08 27/10/08 14/11/08 21/11/08 09/04/09	25.1.201/SC461 tie INF CORR 258 25.1.201/MR/773 tie INF CORR 368 25.1.201/MR/993 tie INF CORR 1204/MP			N/A		M			0	0	0	0	0	0	0	0	0	0	N/A	2A	0		
133			NOT USED											0	0	0	0	0	0	0	0	0	0	N/A		0		
134			Lighting Columns required to be relocated at AB Underpass (Main Utility Diversions)											U	U	U	U	U	U	U	U	U	U	N/A	5C	U		
135			Edinburgh Road - Demolition of Hawkey Structure											U	U	U	U	U	U	U	U	U	U	N/A	5A	U		
136			Section 1c - Ploardy Place - Modifications to design, additional design work outside LOD and additional works to pavements in front of the Playhouse	06/10/2008	24/09/08 02/10/08 01/11/08 23/09/08 27/10/08 27/10/08 30/10/08 14/11/08 19/11/08 21/11/08 09/04/09	SDS-ULE90130-LET-00816 SDS-ULE90130-01-LET-00632 25.1.201/MR/639 SDS-ULE90130-01-LET-00630 tie INF CORR 259 25.1.201/MR/773 tie INF CORR 271 25.1.201/MR/806 tie INF CORR 366 SDS-ULE90130-LET-00813 25.1.201/MR/993 tie INF CORR 1204/MP			N/A				0	0	0	0	0	0	0	0	0	0	0	N/A	1C	0		
137			Sections 1A1 and 1A2 - CEC's proposed amendments to tree build-outs adjacent 4 Constitution Street	08/10/08	26/09/08 23/09/08 27/10/08 27/10/08 31/10/08 14/11/08 18/11/08 21/11/08 19/01/09 30/01/09 03/04/09 09/04/09 09/04/09 15/04/09 21/04/09 18/05/09 22/05/09 09/11/09 19/11/09 13/11/09	SDS-ULE90130-01-LET-00817 25.1.201/MR/642 tie INF CORR 259 25.1.201/MR/773 tie INF CORR 265 25.1.201/JH/817 tie INF CORR 388 SDS-ULE90130-LET-00885 25.1.201/MR/993 25.1.201/JH/298 25.1.201/JH/433 SDS-ULE90130-SW-LET-01500 tie INF CORR 1200/DS tie INF CORR 1204/MP 25.1.201/JH/294 25.1.201/MR/2350 SDS-ULE90130-SW-LET-01561 25.1.201/JH/2211 SDS-ULE90130-SW-LET-01754 25.1.201/JH/9835 tie INF CORR 2737/DS tie INF CORR 167			0	D	1	4	0	0	0	0	0	0	0	0	0	0	0	0	0	N/A	1A	0
138			Design the piled foundations to the Water of Leith Bridge to avoid the existing 950 x 1200mm egg shape d combined sewer	05/09/2008	10/11/08 13/11/08 18/11/08 03/02/09 10/02/09 12/02/09 2/02/09 05/03/09 11/03/09 25/03/09 31/03/09 09/04/09 09/04/09 16/04/09 20/04/09 28/04/09 08/05/09 05/06/09 08/06/09 26/07/09	25.1.201/BOC/882 tie INF CORR 370 SDS-ULE90130-01-LET-00876 SDS-ULE90130-SW-LET-01367 SDS-ULE90130-SW-LET-01379 25.1.201/BOC/1565 tie INF CORR 794 25.1.201/BOC/1799 tie INF CORR 940 25.1.201/BOC/2073 SDS-ULE90130-SW-LET-01469 25.1.201/BOC/2215 tie INF CORR 1081/TC 25.1.201/BOC/2312 tie INF CORR 1251/TC 25.1.201/BOC/2499 tie INF CORR 1401/TC 25.1.201/BOC/2744 tie INF CORR 1606/DC 25.1.201/JH/2630 tie INF CORR 1659/DS	1		1	M	1	4	27,896	0	0	0	27,896	2,770	2,049	0	32,515	0	32,515	N/A	5A	0		

CEC00624424_0170

ETN INFRACO NOTIFICATION of the CHANGE (INTC)
CONFIDENTIAL

Withdrawn/Superseded/no cost
Delay Only
Change Order issued

Ref	Rets. tie	Change Order TCO	Description	Date Notified	Date of further letters	Letter Ref	Agreed in principle	TNC? 1=Y	Estimate issued? 1=Y, 0=N	Change Order? 1=Y	Type See Notes	Change Type See Notes	Pricing Method See Notes	Value Estimate (GBP)										Allocation of Cost		Section See Notes	Change Order Value
														£ Submitted	U&P	Consent/turn Prelims	Other Prelims	Total	£ Agreed	£ Not Agreed	Psrm or VE	Number					
146			IFC Drawing Change Russel Road RTWs 1,2,3 &4	14/10/2008	23/09/08 22/10/08 27/10/08 26/10/08 31/10/08 04/11/08 21/11/08 09/12/08 12/12/08 16/12/08 20/11/08 23/11/08 26/11/08 10/03/09 12/03/09 16/03/09 19/03/09 02/04/09 09/04/09 14/04/09 14/05/09 18/05/09 22/05/09 27/05/09 05/06/09 19/06/09 09/07/09 07/08/09 25/08/09 26/08/09	25.1.201/0682 tie INF CORR 258 tie INF CORR 259 25.1.201/MRH773 25.1.201/MRH778 tie INF CORR 318 25.1.201/MRH836 25.1.201/MRH993 tie INF CORR 459 25.1.201/MRH1152 25.1.201/MRH1173 tie INF CORR 575 25.1.201/UL1366 25.1.201/NS1752 tie INF CORR 821 tie INF CORR 986 tie INF CORR 1032 25.1.201/MRH2022 25.1.201/ADR2161 tie INF CORR 1217/TC tie INF CORR 1239/TC 25.1.201/0625 25.1.201/ALH/2555 tie INF CORR 1459/IC tie INF CORR 1510/GMcG 25.1.201/MRH2738 tie INF CORR 1608 25.1.201/ADR2893 tie INF CORR 1752/TC tie INF CORR 1942/SC tie INF CORR 2077 tie INF CORR 2113/TC	1	1	M	1	1,2,3	0	3,233,043	0	0	3,233,043	126,549	239,245	665,782	4,164,619	991,240	3,173,379	N/A		5A	0	
147			IFC Drawings Change Murrayfield Training Pitches Retaining Wall	14/10/2008	23/09/08 27/10/08 06/11/08 10/11/08 14/11/08 21/11/08 18/11/08 21/11/08 16/11/08 17/07/09 07/08/09 10/08/09 13/08/09 13/08/09 20/08/09 26/08/09 16/10/09	25.1.201/0683 tie INF CORR 258 25.1.201/MRH773 tie INF CORR 345 25.1.201/MRH889 tie INF CORR 388 25.1.201/MRH993 tie INF CORR 1234/MP 25.1.201/MRH2250 tie INF CORR 1759/IC 25.1.201/MRH3075 tie INF CORR 1989/TC 25.1.201/MRH3252 25.1.201/06273 tie INF CORR 2045/TC 25.1.201/MRH3319 tie INF CORR 2126/TC tie INF CORR 2524/IC		1	M	1	1,2,3	0	1,074,667	0	0	1,074,667	78	79,525	167,931	1,342,200	0	1,342,200	N/A		5A	0	
148			IFC Drawing Change Balgreen Road Underbridge (SSZb)	16/10/2008	23/09/08 22/10/08 27/10/08 26/10/08 31/10/08 04/11/08 21/11/08 16/07/09 1/11/09	tie INF CORR 258 tie INF CORR 259 25.1.201/MRH773 25.1.201/MRH778 tie INF CORR 318 25.1.201/MRH836 25.1.201/MRH993 tie INF CORR 1789/TC 25.1.201/MRH9376		0	M	1	1,2,3	0	0	0	0	0	0	0	0	0	0	N/A		5A	0		
149			Removal and deposition of material from previous works section / as per sketch	16/10/2008	04/11/08 29/06/09 04/09/09 09/10/09	25.1.201/0689 tie INF CORR 324 25.1.201/02258 tie INF CORR 2260/MP 25.1.201/03697		1	M	1	4	0	78,806	0	0	78,806	1,053	5,832	13,791	99,482	0	99,482	N/A	7	0		
150			IFC Drawing Changes S 21 Roseburn Street Viaduct	31/10/2008	05/11/08 10/11/08 17/11/08 03/12/08 12/12/08	25.1.201/0616 tie INF CORR 329 25.1.201/ES0886 tie INF CORR 401 25.1.201/ABU/1043 tie INF CORR 436			N/A	M			U	U	U	U	U	U	U	U	N/A		5A	U			
151	17		Excavate and replace existing BU material within existing utility trenches	13/10/2008	20/10/08 27/10/08 29/10/08 30/10/08 30/10/08 26/11/08 01/12/08 12/12/08 16/12/08 16/12/08 18/12/08 07/01/09 20/01/09 26/01/09 29/01/09 04/02/09 05/02/09 06/03/09 24/03/09 08/05/09 13/05/09 04/09/09 17/09/09	tie INF CORR 216 25.1.201/UL729 tie INF CORR 270 25.1.201/UL793 E-mail tie-BBSC tie INF CORR 302 25.1.201/UL1017 25.1.201/MRH1048 tie INF CORR 493 25.1.201/MRH1178 tie INF CORR 538 tie INF CORR 537 25.1.201/MRH1247 tie INF CORR 615 25.1.201/MRH1398 tie INF CORR 658 25.1.201/MRH1478 25.1.201/UL1485 tie INF CORR 930 25.1.201/MRH2051 tie INF CORR 1397/MP 25.1.201/MRH2615 tie INF CORR 2267/CB 25.1.201/UL2632	1	1	1	1	1	0	992	0	0	992	incl	73	0	1,066	1,066	0	N/A		1B	0	
152			IFC Drawing changes/vertical and horizontal Alignment Section 5 Sheets 1 to 26	16/10/2008	23/09/08 22/10/08 27/10/08 26/10/08 31/10/08 04/11/08 05/11/08 10/11/08 09/12/08 12/12/08 16/12/08 20/11/08 20/11/08 04/02/09 06/03/09 11/03/09 18/03/09 18/03/09 29/07/09 31/07/09	25.1.201/0700 tie INF CORR 258 tie INF CORR 259 25.1.201/MRH773 25.1.201/MRH778 tie INF CORR 318 25.1.201/MRH836 25.1.201/MRH887 tie INF CORR 459 25.1.201/MRH1152 25.1.201/MRH1173 tie INF CORR 575 25.1.201/UL1357 tie INF CORR 887 tie INF CORR 887 25.1.201/MRH1994 25.1.201/MRH1990 tie INF CORR 1865/TC 25.1.201/MRH3191		0	M	1	1,2,3	0	0	0	0	0	0	0	0	0	0	0	N/A		5A,5B,5C	0	

CEC00624424_0172

ETN INFRACO NOTIFICATION of the CHANGE (INTC) CONFIDENTIAL		Withdrawn/Superseded/no cost Delay Only Change Order issued										Value Estimate (GBP)										Allocation of Cost		Section		Change Order Value					
Ref	Reqs. No	Change Order TCO	Description	Date Notified	Date of further letters	Letter Ref	Agreed in principle	TNC? 1=Y	Estimate issued? 1=Y, 0=N	Change Order? 1=Y	Type See Notes	Change Type See Notes	Pricing Method See Notes	SDS	Bilfinger	Siemens	CAF	Sub-total	UH & P	Consortium Prelims	Other Prelims	Total	£ Agreed	£ Not Agreed	Psurn or VE	Number	See Notes	Location			
160			IFC Drawing changes - Edinburgh Park Bridge	16/10/2008	22/1/08 26/1/08 31/1/08 04/1/08 09/1/08 12/1/08 16/1/08 20/1/08 26/1/08 03/03/09 10/03/09 14/03/09	25.1.201/0699 tie INF CORR 259 25.1.201/MRH/779 tie INF CORR 318 25.1.201/MRH/636 tie INF CORR 499 25.1.201/MRH/1162 25.1.201/MRH/1173 tie INF CORR 575 25.1.201/IL/1362 tie INF CORR 842 25.1.201/IL/2526 25.1.201/IL/2527 tie INF CORR 143/ACB				M		1,2,3	0	226,315	3,395	0	229,710	0	16,747	39,805	266,063	0	266,063	N/A		5B	0				
161			Traffic Management - Temporary Traffic Signals Bus Tracker, TPDS and Radio	10/10/2008	17/1/08 23/09/08 27/1/08 12/1/08 14/1/08 19/1/08 21/1/08 18/1/08 07/01/09 09/04/09 21/04/09	tie INF CORR 219 tie INF CORR 225 25.1.201/MRH/705 tie INF CORR 258 25.1.201/MRH/773 ETN(BSD)TIE&ABC#050102 tie INF CORR 388 tie INF CORR 398 25.1.201/MRH/553 tie INF CORR 537 25.1.201/MRH/1247 tie INF CORR 1204/MP 25.1.201/MRH/2350		N/A									0	0			0	0	0	0	0	N/A	All	0			
162	20		Haymarket Tax Stance	24/09/2008	07/08/08 29/1/08 07/1/08 18/1/08 18/1/08 04/11/08 03/02/09 10/02/09 12/02/09 27/02/09 05/03/09 27/03/09 04/04/09 07/04/09 25/05/09 16/06/09 29/07/09 31/07/09	SDS-ULE90130-01-LET-00751 25.1.201/JH/619 tie INF CORR 292 25.1.201/JH/676 SDS-ULE90130-01-LET-00871 tie INF CORR 537 25.1.201/MRH/1247 SDS-ULE90130-SW-LET-01367 SDS-ULE90130-SW-LET-01379 25.1.201/JH/1572 tie INF CORR 794 25.1.201/BDC/1799 INF CORR 1043 25.1.201/JH/2164 25.1.201/BDC/2184 25.1.201/BDC/2224 25.1.201/IL/2526 tie INF CORR 1899/DS tie INF CORR 1879/DC						1	1	1		22,710	0	0	0	22,710	2,271	1,681	0	26,662	0	26,662	N/A		2	0	
164			Delayed Listed Building Consent Applications	29/07/2008	29/07/08 01/08/08 01/01/08 22/08/08 17/1/08 26/1/08 16/1/08 11/03/09	SDS-ULE90130-01-LET-00747 25.1.201/JH/540 SDS-ULE90130-01-LET-00749 25.1.201/BDC/365 tie INF CORR 108 tie INF CORR 359 25.1.201/BDC/1026 25.1.201/JH/1181 25.1.201/JH/1893		N/A						0	0	0	0	0	0	0	0	0	0	0	0	N/A		1	0		
165			Delayed issued of IFCs for Section 144	17/10/08	16/1/08 23/09/08 27/1/08 14/1/08 14/1/08 21/1/08 26/1/08 16/1/08 09/04/09 21/04/09	25.1.201/MRH/707 tie INF CORR 258 25.1.201/MRH/773 tie INF CORR 388 tie INF CORR 398 25.1.201/MRH/553 25.1.201/BDC/1027 25.1.201/JH/1181 tie INF CORR 1204/MP 25.1.201/MRH/2350								0	0	0	0	0	0	0	0	0	0	0	0	N/A		144	0		
166	78	8	Demolition of existing garage and fuel tanks on Ocean Drive.	20/10/2008	23/09/08 27/1/08 29/1/08 14/1/08 17/1/08 21/1/08 03/12/08 06/01/09 09/04/09 11/1/09 17/1/09	tie INF CORR 258 25.1.201/MRH/773 tie INF CORR 267 tie INF CORR 388 25.1.201/IL/849 25.1.201/MRH/553 tie INF CORR 452 SDS-ULE90130-01-LET-00912 tie INF CORR 1204/MP tie INF CORR 2779/SJ 25.1.201/MRH/4041						1	1	1		14,500	0	0	14,500	1,450	1,113	2,538	19,561	17,123	2,538	N/A		1A	17,123		
167		56	Accommodation Works to Wanderers Clubhouse Building at Murrayfield	20/10/2008	02/07/08 23/09/08 27/1/08 07/1/08 08/1/08 11/1/08 14/1/08 17/1/08 21/1/08 21/1/08 03/12/08 09/12/08 20/01/09 20/01/09 05/02/09 06/03/09 12/03/09 12/03/09 12/03/09 12/03/09 12/03/09 09/04/09 10/04/09 21/04/09 07/05/09 26/05/09 01/10/09	25.1.201/MRH/716 25.1.201/TM/206 tie INF CORR 258 25.1.201/MRH/773 25.1.201/JH/676 tie INF CORR 534 25.1.201/MRH/691 tie INF CORR 388 SDS-ULE90130-05-LET-00366 25.1.201/BDC/691 25.1.201/MRH/693 tie INF CORR 456 25.1.201/MRH/1112 25.1.201/IL/1309 Graham Const. 25.1.201/IL/1310 tie INF CORR 661 25.1.201/MRH/1488 tie INF CORR 904 25.1.201/IL/1309 Graham 25.1.201/IL/1515 CBC 25.1.201/IL/1916 Clark 25.1.201/IL/1917 BMR 25.1.201/IL/1918 BSL 25.1.201/IL/1919 tie INF CORR 1204/MP SDS-ULE90130-05-LET-00384 25.1.201/MRH/2350 25.1.201/IL/2526 tie INF CORR 1506/JO tie INF CORR 2551/TC					1	1	1	1	4	1,2,3	0	141,631	0	0	141,631	14,163	10,481	24,786	191,061	166,275	24,786	VPS	1	5A	166,275
168		16	Demolition of existing building at 33 Ocean Drive.	20/10/2008	23/09/08 27/1/08 29/1/08 14/1/08 17/1/08 21/1/08 26/1/08 16/1/08 09/04/09 21/04/09	25.1.201/MRH/717 tie INF CORR 258 25.1.201/MRH/773 tie INF CORR 265 tie INF CORR 388 25.1.201/MRH/553 25.1.201/IL/1015 tie INF CORR 512 tie INF CORR 537 25.1.201/IL/1218 25.1.201/MRH/1247 tie INF CORR 785 tie INF CORR 1204/MP						1,2,3	0	5,000	0	0	5,000	500	3/0	875	6,745	5,868	887	N/A		5	5,868				

CEC00624424_0174

ETN INFRACO NOTIFICATION of the CHANGE (INTC)
CONFIDENTIAL

Withdrawn/Superseded/no cost
Delay Only
Change Order issued

Ref	Rets. No	Change Order TCO	Description	Date Notified	Date of further letters	Letter Ref	Agreed in principle	TNC? 1=Y	Estimate issued? 1=Y, 0=N	Change Order? 1=Y	Type See Notes	Change Type See Notes	Pricing Method See Notes	Value Estimate (GBP)										Allocation of Cost		Section	Change Order Value			
														£ Submitted	UH & P	Consortium Prelims	Other Prelims	Total	£ Agreed	£ Not Agreed	Psurm or VE	Number								
186			Discovery of Thru Ducts and Gas Main - Chainage 374 RHS	13/12/2008	20/1/08 01/1/08 12/1/08 18/1/08 20/1/08 26/01/08 12/02/08 20/02/08 06/03/08 16/03/08 15/04/08 08/05/08 18/05/08 11/09/08 17/09/08 09/10/08 16/10/08 23/10/08	25.1.201/MRH/006 tie INF CORR 404 25.1.201/MRH/1050 tie INF CORR 485 25.1.201/UL/1207 tie INF CORR 484 tie INF CORR 612 25.1.201/UL/1371 tie INF CORR 700 25.1.201/MRH/1653 tie INF CORR 919 25.1.201/MRH/1935 e-mail SK-MRH tie INF CORR 1416/MP 25.1.201/MRH/2658 tie INF CORR 2348/SC 25.1.201/MRH/2525 tie INF CORR 2604/FD 25.1.201/MRH/3823 tie INF CORR 2553/SC	1		1	M	1	4	U	U	U	U	U	U	U	U	U	U	U	U	U	VPS	2	1B	U	
186			CEO's requirement to amend the specification for temporary bus shelters on George Street	03/11/2008	27/1/08 05/1/08 15/01/08	25.1.201/GC/627 tie INF CORR 436 25.1.201/GC/4084 tie INF CORR 653			N/A					U	U	U	U	U	U	U	U	U	U	U	U	N/A		1C	U	
187		28	Additional excavated material at Depot	03/11/2008	27/1/08 05/1/08 12/1/08 04/03/08 11/03/08 16/03/08 23/03/08 27/03/08 04/04/08 09/04/08 15/04/08 17/04/08 20/04/08 30/04/08 17/05/08 22/05/08 07/07/08 07/08/08 19/08/08 09/09/08	25.1.201/GC/626 tie INF CORR 436 25.1.201/GC/4092 tie INF CORR 491 25.1.201/BC/W/1777 25.1.201/GC/820 tie INF CORR 1026 25.1.201/MRH/2046 tie INF CORR 1184 tie INF CORR 1184 tie INF CORR 1227/AS tie INF CORR 1250/AS SDS-ULE90130/SW/LET/01512 25.1.201/MRH/2338 tie INF CORR 1353/AS 25.1.201/HH/2879 25.1.201/HH/2898 tie INF CORR 1738/SS tie INF CORR 1956/AS 25.1.201/HH/2381 SDS-ULE90130/SW/LET-00156	1	1	1	M	1	1	0	1345,600	0	0	1,345,600	0	99,574	235,480	1,660,654	1,425,174	235,480	N/A		6	1,425,174			
187.1			Additional excavated material at Depot - investigate options to reuse additional material	13/11/2008	05/1/08 12/1/08 04/03/08	tie INF CORR 357 25.1.201/GC/4091 tie INF CORR 491 25.1.201/BC/W/1777			N/A		M	1	4	0	0	0	0	0	0	0	0	0	0	0	0	N/A		6	0	
188			Contaminated Material at Camnockwee	04/11/2008	06/03/08 07/05/08 14/05/08 22/05/08 12/06/08 13/06/08 19/11/08	25.1.201/GC/629 tie INF CORR 851 25.1.201/GA/2558 tie INF CORR 1488/MP 25.1.201/CF/4070 25.1.201/GA/2548 tie INF CORR 2040/TC 25.1.201/CF/4070					M	1	4	0	11,600	0	0	11,600	0	858	2,030	14,488	0	14,488	N/A		5B	0		
189			Discovery of Low Voltage Cable in Road Formation	13/11/2008	20/1/08 01/1/08 18/1/08 01/05/08 08/09/08	25.1.201/MRH/907 tie INF CORR 404 25.1.201/MRH/1051 tie INF CORR 484 25.1.201/SK/2500 tie INF CORR 2281/HD					M	1	4	U	U	U	U	U	U	U	U	U	U	U	U	U	VPS	2	1B	U
190			Discovery of Gas Main - Chainage 353 RHS	13/11/2008	20/1/08 01/1/08 18/1/08 15/04/08	25.1.201/MRH/909 tie INF CORR 404 25.1.201/MRH/1052 tie INF CORR 484 e-mail SK-MRH			1		M	1	4	0	0	0	0	0	0	0	0	0	0	0	0	0	VPS	2	1B	0
191		110	Discovery of concrete encased lighting cable - Chainage 339 RHS	13/11/2008	20/1/08 01/1/08 12/1/08 18/1/08 20/1/08 26/01/08 12/02/08 20/02/08 06/03/08 16/03/08 08/05/08 18/05/08 11/09/08 11/09/08 17/09/08 16/10/08 23/10/08 29/10/08	25.1.201/MRH/909 tie INF CORR 404 25.1.201/MRH/1053 tie INF CORR 485 25.1.201/UL/1207 tie INF CORR 612 25.1.201/UL/1372 tie INF CORR 704 25.1.201/MRH/1650 tie INF CORR 921 25.1.201/MRH/1935 tie INF CORR 1416/MP 25.1.201/MRH/2658 25.1.201/SK/P/01/3485 tie INF CORR 2348/SC 25.1.201/MRH/2525 25.1.201/MRH/3823 tie INF CORR 2553/SC tie INF CORR 2712/SU	1		1	M	1	4	0	133	0	0	133	13	10	23	180	180	-0	VPS	2	1B	180			
192		14	Discovery of Cable & Wireless ducts - Chainage 108	17/11/2008	27/1/08 01/1/08 12/1/08 18/1/08 19/1/08 20/1/08 26/01/08 12/02/08 20/02/08 06/03/08 16/03/08 08/05/08 18/05/08 11/09/08 17/09/08 16/10/08 23/10/08	25.1.201/MRH/910 tie INF CORR 436 25.1.201/MRH/1054 tie INF CORR 485 25.1.201/UL/1207 25.1.201/UL/1207 tie INF CORR 612 25.1.201/UL/1373 tie INF CORR 633 tie INF CORR 705 25.1.201/MRH/1645 tie INF CORR 923 25.1.201/MRH/1935 tie INF CORR 1416/MP 25.1.201/MRH/2658 tie INF CORR 2348/SC 25.1.201/MRH/3535 25.1.201/MRH/3823 tie INF CORR 2443/SC	1		1	M	1	4	0	160	0	0	160	0	11	26	187	161	26	VPS	2	1B	161			
193		46	Discovery of Hydrant in kerb line - Chainage 333 RHS	13/11/2008	20/1/08 01/1/08 12/1/08 18/1/08 20/1/08 26/01/08 12/02/08 20/02/08 06/03/08 16/03/08 08/05/08 18/05/08 11/09/08 17/09/08 16/10/08 23/10/08	25.1.201/MRH/911 tie INF CORR 404 25.1.201/MRH/1055 tie INF CORR 485 25.1.201/UL/1207 tie INF CORR 612 25.1.201/UL/1374 tie INF CORR 705 25.1.201/MRH/1641 tie INF CORR 920 25.1.201/MRH/1935 25.1.201/DMC/P/01/2083 tie INF CORR 1282/CB 25.1.201/MRH/2367 tie INF CORR 1349/MP tie INF CORR 1416/MP tie INF CORR 1387/CB 25.1.201/MRH/2658 tie INF CORR 2348/SC 25.1.201/MRH/3535 25.1.201/MRH/3823 tie INF CORR 2553/SC	1		1	M	1	4	0	333	0	0	333	33	25	58	449	391	58	VPS	2	1B	391			

CEC00624424_0177

ETN INFRACO NOTIFICATION of the CHANGE (INTC) CONFIDENTIAL

Withdrawn/Superseded/no cost
Delay Only
Change Order issued

Table with columns: Ref, Rets, Tie Change Order, Description, Date Notified, Date of further letters, Letter Ref, Agreed in principle, TNC?, Estimate issued?, Change Order?, Type, Change Type, Pricing Method, Value Estimate (GBP), Allocation of Cost, Section, Change Order Value. Rows include details for items 194, 195, 196, 197, 198, 199, 200, and 201.

CEC00624424_0178

ETN INFRACO NOTIFICATION OF CHANGE (INTC)
CONFIDENTIAL



Ref	Intc Order ID	Description	Date Notified	Date of further letters	Letter Ref	Agreed in principle	TRC7	Estimate issued?	Change Order?	Change Type	Pricing Method	SOS	Edinger	Siemens	L&A	Sub-total	Value Estimate (GBP)			Allocation of Cost		Section	Change Order Value	
																	£ Not Agreed	£ Agreed	£ Not Agreed	Form or VE	Number			
Withdrawn/Superseded/In use																								
Delay Only																								
Change Order Issued																								
																	Other Persons	Contractor	Other Persons	Other Persons	Other Persons			
																	Other Persons	Contractor	Other Persons	Other Persons	Other Persons			
																	Other Persons	Contractor	Other Persons	Other Persons	Other Persons			
																	Other Persons	Contractor	Other Persons	Other Persons	Other Persons			
200	90	IFC Drawing changes - Gogarburn Culverts 1, 2 and 3	06/11/2008	13/11/08 19/11/08 02/02/09 03/02/09 03/02/09 20/02/09 24/02/09 06/03/09 19/03/09 25/03/09 14/04/09 21/04/09 12/05/09	25_120100469 the INF-CUHH-354 25_120100469 25_120100469 25_120100469 25_120100469 the INF-CORR-788 25_120100469 the INF-CORR-899 25_120100469 the INF-CUHH-1253/GMG 25_120100469 the INF-CUHH-211/GMG	1		1	M	1,2,3	0	35,861	0	0	35,861	0	0	35,861	0	0	0	0	7	13,388
201	79	IFC Drawing changes - Gogarburn Depot	06/11/2008	13/11/08 17/11/08 19/11/08 19/11/08 20/01/09 26/01/09 25/02/09 14/04/09 15/04/09 23/04/09 02/06/09 09/06/09 23/06/09	25_120100690 the INF-CORR-359 25_120100690 25_120100690 25_120100690 the INF-CORR-502 25_120100690 25_120100690 25_120100690 the INF-CORR-1305/AS 25_120100690 the INF-CORR-1571/GMG 25_120100690 the INF-CORR-1571/GMG 25_120100690	1			M	1,2,3	U	0	0	0	0	0	0	0	0	0	0	0	0	0
202	78	Structural Steelwork	07/05/2009	15/05/09 22/05/09 15/07/09	25_120100705 the INF-CORR-1770 25_120100705 the INF-CORR-1770	1		1	M	1,2,3	0	216,471	0	0	216,471	0	0	216,471	0	0	0	0	6	270,373
203		Hard Landscaping	02/06/2009	14/06/09 21/06/09 04/09/09 22/09/09 13/10/09 29/10/09	25_120100716 the INF-CORR-2475/AS 25_120100716 the INF-CORR-2475/AS 25_120100716 the INF-CORR-2475/AS 25_120100716 the INF-CORR-2475/AS 25_120100716 the INF-CORR-2475/AS	1			M	1,2,3	0	165,140	0	165,140	0	0	165,140	0	0	0	0	0	6	196,717
204		Secondary Bedding	01/06/2009	31/07/09	25_120100718 the INF-CORR-188	1		1	M	1,2,3	0	0	0	0	0	0	0	0	0	0	0	0	6	0
205		New Chamber	02/06/2009	12/06/09 31/07/09	25_120100726 the INF-CORR-1654/GMG 25_120100726 the INF-CORR-1654/GMG	1		1	M	1,2,3	0	0	0	0	0	0	0	0	0	0	0	0	6	0
206		Sol Nailing and Soil Reinforcement Works	22/05/2009	07/08/09 19/08/09 08/09/09 10/09/09 16/09/09 25/09/09 25/09/09 09/10/09	25_120100730 the INF-CORR-1956/AS 25_120100730 the INF-CORR-1956/AS 25_120100730 the INF-CORR-1956/AS 25_120100730 the INF-CORR-1956/AS 25_120100730 the INF-CORR-1956/AS 25_120100730 the INF-CORR-1956/AS	1			M	1,2,3	0	342,909	0	342,909	0	0	342,909	0	0	0	0	6	458,788	
209	93	Secondary Steelwork	30/07/2009	17/09/09 05/09/09 08/09/09 27/09/09 19/10/09 09/06/09 27/09/09 24/09/09 16/10/09	25_120100774 the INF-CORR-166/GMG 25_120100774 the INF-CORR-166/GMG 25_120100774 the INF-CORR-166/GMG 25_120100774 the INF-CORR-166/GMG 25_120100774 the INF-CORR-166/GMG 25_120100774 the INF-CORR-166/GMG	1		1	M	1,2,3	U	5,952	0	5,952	0	0	5,952	0	0	0	0	6	7,366	
210		Drainage - EDDU to IFC Change		08/09/09 27/09/09 24/09/09 19/10/09 09/06/09	25_120100780 the INF-CORR-3307 25_120100780 the INF-CORR-3307 25_120100780 the INF-CORR-3307 25_120100780 the INF-CORR-3307	1			F	1,2,3	U	9,406	0	9,406	0	0	9,406	0	0	0	0	6	0	
212		Drainage - EDDU to IFC Change		09/06/09 27/09/09 24/09/09 19/10/09 09/06/09	25_120100789 the INF-CORR-3374 25_120100789 the INF-CORR-3374 25_120100789 the INF-CORR-3374	1		1	F	1,2,3	U	114,263	0	114,263	0	0	114,263	0	0	0	0	6	0	
213	114	EDDU to IFC Change	22/03/09	13/11/09	25_120100794 the INF-CORR-2019/GMG	1		1	M	1,2,3	U	62,950	0	62,950	0	0	62,950	0	0	0	0	6	78,875	
215		IFC issue drawings for installation of incoming gas main	06/11/2008		25_120100931 the INF-CORR-469	1			M	1,2,3	0	0	0	0	0	0	0	0	0	0	0	6	0	
216		IFC issue drawings for installation of incoming gas main	06/11/2008	04/12/08 09/12/08 19/02/09 03/06/09 14/06/09 17/06/09 01/09/09 21/09/09 29/09/09	25_120100931 the INF-CORR-469 25_120100931 the INF-CORR-469 25_120100931 the INF-CORR-469 25_120100931 the INF-CORR-469 25_120100931 the INF-CORR-469 25_120100931 the INF-CORR-469	1			M	1,2,3	U	615,451	0	615,451	0	0	615,451	0	0	0	0	6B	0	
218		IFC Drawing changes - Road, Streetlighting - Drainage System 5C	06/11/2008	04/12/08 09/12/08 19/02/09 24/02/09 19/04/09 27/05/09 29/05/09 03/06/09 31/07/09 09/08/09 17/08/09 21/09/09 29/09/09	25_120100947 the INF-CORR-470 25_120100947 the INF-CORR-470 25_120100947 the INF-CORR-470 25_120100947 the INF-CORR-470 25_120100947 the INF-CORR-470 25_120100947 the INF-CORR-470 25_120100947 the INF-CORR-470	1			M	1,2,3	U	462,774	0	462,774	0	0	462,774	0	0	0	0	6C	0	
219		IFC Drawing changes - Bankhead Tramstop	06/11/2008	21/01/09 26/01/09 02/02/09	25_120100951 the INF-CORR-181 25_120100951 the INF-CORR-181	1		1	M	1,2,3	0	0	0	0	0	0	0	0	0	0	0	0	6	0



ETN INFRACO NOTIFICATION of the CHANGE (INTC)
CONFIDENTIAL

Withdrawn/Superseded/no cost
Delay Only
Change Order issued

Ref	Rets. No	Change Order TCO	Description	Date Notified	Date of further letters	Letter Ref	Agreed in principle	TNC?	Estimate issued?	Change Order?	Type	Change Type	Pricing Method	Value Estimate (GBP)										Allocation of Cost		Section	Change Order Value		
														£ Submitted	UH & P	Consortium Prelims	Other Prelims	Total	£ Agreed	£ Not Agreed	Psurm or VE	Number							
													SDS	Bilfinger	Siemens	CAF	Sub-total	UH & P	Consortium Prelims	Other Prelims	Total	£ Agreed	£ Not Agreed	Psurm or VE	Number	See Notes			
218		32	Discovery of 2 No. LV and 1 No. LV cables above formation level - Chainage 152 RHS.	13/11/2008	20/1/08 01/12/08 12/12/08 16/12/08 20/01/09 26/01/09 12/02/09 20/02/09 04/03/09 06/03/09 16/03/09 2/04/09 08/04/09 29/04/09 08/05/09 12/05/09 18/05/09 11/09/09 17/09/09 16/10/09 23/10/09	25.1.201/MRH/916 tie INF CORR 404 25.1.201/MRH/1061 tie INF CORR 485 25.1.201/UL/1207 tie INF CORR 612 25.1.201/UL/1379 tie INF CORR 711 25.1.201/MRH/1666 25.1.201/DMC/P01/1750 tie INF CORR 912 25.1.201/MRH/1935 tie INF CORR 1128 25.1.201/SC/2298 tie INF CORR 1349/MP tie INF CORR 1416/MP 25.1.201/SC/2596 25.1.201/MRH/2658 tie INF CORR 2348/SC 25.1.201/MRH/3535 25.1.201/MRH/3823 tie INF CORR 2553/SC	1		1	1	1	4	0	218	0	0	0	218	22	16	38	256	256	38	VPS	2	1B	256	
219		62	Discovery of Hydrant above formation level - Chainage 177 RHS	13/11/2008	20/1/08 01/12/08 18/12/08 01/05/09 28/09/09 08/10/09	25.1.201/MRH/917 tie INF CORR 404 25.1.201/MRH/1062 tie INF CORR 484 25.1.201/SC/2498 tie INF CORR 2188/CPD 25.1.201/DM/3722	1		1	0	1	1	4	0	0	0	0	0	0	0	0	0	0	0	0	VPS	2	1B	0
220		33	Discovery of Water connection pipework above formation level Chainage 151 RHS	13/11/2008	20/1/08 01/12/08 12/12/08 16/12/08 20/01/09 26/01/09 12/02/09 20/02/09 06/03/09 16/03/09 31/03/09 16/04/09 1/04/09 24/04/09 08/05/09 08/05/09 18/05/09 11/09/09 17/09/09 16/10/09 23/10/09	25.1.201/MRH/918 tie INF CORR 404 25.1.201/MRH/1061 tie INF CORR 485 25.1.201/UL/1379 tie INF CORR 612 25.1.201/UL/1379 tie INF CORR 707 25.1.201/MRH/1667 tie INF CORR 911 25.1.201/MRH/1935 25.1.201/DMC/P01/2079 tie INF CORR 1284/CB 25.1.201/MRH/2369 tie INF CORR 1349/MP tie INF CORR 1416/MP tie INF CORR 1387/CB 25.1.201/MRH/2658 tie INF CORR 2348/SC 25.1.201/MRH/3535 25.1.201/MRH/3823 tie INF CORR 2553/SC	1		1	1	1	4	0	88	0	0	88	7	5	12	92	80	12	VPS	2	1B	80		
221			Discovery of MUDEA excavations containing water main and connections to the new kerb line - Chainage 125 RHS	13/11/2008	20/1/08 01/12/08 18/12/08 26/01/09 05/05/09	25.1.201/MRH/919 tie INF CORR 404 25.1.201/MRH/1063 tie INF CORR 529 tie INF CORR 600 25.1.201/UL/2525			N/A		1	1		0	0	0	0	0	0	0	0	0	0	0	0	VPS	2	1B	0
222		66	Discovery of valves and a hydrant fouling the new kerb line - Chainage 120 RHS	13/11/2008	20/1/08 01/12/08 12/12/08 16/12/08 20/01/09 26/01/09 10/02/09 16/02/09 27/04/09 30/04/09 10/05/09	25.1.201/MRH/920 tie INF CORR 404 25.1.201/MRH/1064 tie INF CORR 485 25.1.201/UL/1207 tie INF CORR 612 25.1.201/UL/1380 tie INF CORR 712 25.1.201/MRH/1629 tie INF CORR 1310/CB 25.1.201/DMC/P01/2489 tie INF CORR 1618/CB	1		1	1	1	1	4	0	627	0	0	627	63	46	110	845	618	228	VPS	2	1B	618	
223		34	Discovery of stone culvert - Chainage 100 RHS	17/11/2008	20/1/08 01/12/08 12/12/08 18/12/08 20/01/09 26/01/09 12/02/09 20/02/09 04/03/09 06/03/09 16/03/09 27/03/09 0/04/09 08/04/09 29/04/09 08/05/09 12/05/09 18/05/09 11/09/09 17/09/09 16/10/09 23/10/09	25.1.201/MRH/921 tie INF CORR 411 25.1.201/MRH/1065 tie INF CORR 485 25.1.201/UL/1207 tie INF CORR 612 25.1.201/UL/1381 tie INF CORR 713 25.1.201/MRH/1658 25.1.201/DMC/P01/1640 tie INF CORR 910 25.1.201/MRH/1935 tie INF CORR 1128 25.1.201/DMC/P01/2096 25.1.201/SC/2298 tie INF CORR 1349/MP tie INF CORR 1416/MP 25.1.201/SC/2596 25.1.201/MRH/2658 tie INF CORR 2348/SC 25.1.201/MRH/3535 25.1.201/MRH/3823 tie INF CORR 2553/SC	1		2	1	1	4	0	2,362	0	0	2,362	236	175	413	3,186	1,018	2,168	VPS	2	1B	1,018		
224			Discovery of Scottish Power cables - Chainage 90 RHS	17/11/2008	20/1/08	tie INF CORR 411			N/A					0	0	0	0	0	0	0	0	0	0	0	0	VPS	2	1B	0
225		35	Repairs required to Footpath to allow pedestrian access - Chainage 170 RHS	17/11/2008	27/1/08 09/01/09 20/01/09 26/01/09 25/02/09 29/04/09	25.1.201/MRH/923 tie INF CORR 438 25.1.201/UL/1266 tie INF CORR 587 25.1.201/UL/1370 tie INF CORR 781 tie INF CORR 1349/MP	1		1	1	1	1	4	0	264	0	0	264	0	20	46	329	283	46	N/A		1B	283	
226			Operational Design Review of Depot - changes arising	25/11/2008	20/02/09 11/03/09 10/07/09 30/07/09	tie INF CORR 400 tie INF CORR 767 25.1.201/JH/1887 SDS-ULE90130-SW-LET-00144 SDS-ULE90130-SW-LET-01641			0		0	1	1,2,3,4	0	0	0	0	0	0	0	0	0	0	0	N/A		1B	0	
227			Operational Design Review of Haymarket - changes arising	25/11/2008	20/02/09 31/07/09	tie INF CORR 399 tie INF CORR 767 25.1.201/JH/1889			1		0	1	1,2,3,4	26,414	0	0	0	26,414	2,641	1,955	0	31,011	0	31,011	N/A		2	0	
228			Relocation of bus stop outwith LOD at Princes Mall	01/12/08	25/1/08 09/12/08 12/12/08 30/01/09 03/02/09 05/03/09 23/03/09 01/04/09 16/04/09 23/04/09 24/04/09 06/05/09 08/05/09 11/05/09 0/01/09 20/07/09	SDS-ULE90130-SW-LET-01259 25.1.201/MRH/1044 tie INF CORR 483 25.1.201/MRH/1138 25.1.201/JH/1435 tie INF CORR 805 25.1.201/MRH/1812 tie INF CORR 1071 25.1.201/SC/2147 tie INF CORR 1266/DS 25.1.201/MRH/2381 SDS-ULE90130-SW-LET-01520 25.1.201/JH/2515 25.1.201/MRH/2519 25.1.201/SC/2685 tie INF CORR 1/16/US 25.1.201/BOC/3086	1		1	1	1	4	5,060	0	0	0	5,060	506	374	0	5,941	0	5,941	N/A		1C	0		
229			NOT USED						0		M			0	0	0	0	0	0	0	0	0	0	0	N/A		N/A	0	

CEC00624424_0181

ETN INFRACO NOTIFICATION of the CHANGE (INTC) CONFIDENTIAL

Withdrawn/Superseded/no cost
Delay Only
Change Order issued

Table with columns: Ref, Rets, Tie Change Order, Description, Date Notified, Date of further letters, Letter Ref, Agreed in principle, TNC?, Estimate issued?, Change Order?, Type, Change Type, Pricing Method, Value Estimate (GBP), Allocation of Cost, Section, Change Order Value. Rows include details for various drawing changes and groundworks.

CEC00624424_0182

ETN INFRACO NOTIFICATION OF THE CHANGE (INTC)
CONFIDENTIAL

Ref	Intc Title	Change Order TOC	Description	Date Notified	Date of further letters	Letter Ref	Agreed in principle	TRC7	Estimate Band? Y/N	Change Order? Y/N	Change Type	Pricing Method	Value Estimate (GBP)							Allocation of Cost	Section	Change Order Value					
													£ Submitted										£ Not Agreed	£ Agreed	£ Not Agreed	Firm or VE	Number
													Siemens	Edinger	Siemens	CAF	Sub-total	LH&P	Construction								
241			MEDRA has commenced works on Bankhead Drive preventing Infraco progress in the area until its works are complete.	20/11/2008	12/1/2009 30/1/09 06/02/09 15/02/09 20/03/09 14/04/09 06/05/09 25/12/01/BSW/2543 19/05/09 01/10/09	25_1201/MRH/0686 the INF-CURR-030 25_1201/MRH/1501 the INF-CURR-030 25_1201/MRH/1504 the INF-CURR-030 25_1201/BSW/2036 the INF-CORR-1232/TC 14/04/09 the INF-CORR-1231/MP 25_1201/BSW/2543 the INF-CORR-1231/MP 19/05/09 25_1201/MRH/2538 the INF-CURR-1884/TC 19/11/09			N/A	4	M		0	0	0	0	0	0	0		0	5B	0				
242	111		IRU Presentations by SJS to the public during September 2008 and changes to drawings arising from the consultation process.	20/11/08	21/11/08 21/11/08 04/02/09 25/02/09 25/02/09 19/11/09 14/05/09 31/07/09 25/08/09 25/08/09 09/10/09 09/10/09 12/10/09 12/10/09 14/11/09 10/11/09	SJS-ULE90130-SWALET-0172/4 SJS-ULE90130-SWALET-0173/4 SJS-ULE90130-SWALET-0174/4 SJS-ULE90130-SWALET-0175/4 25_1201/MRH/1462 25_1201/MRH/1461 SJS-ULE90130-SWALET-0141/2 SJS-ULE90130-SWALET-0141/3 25_1201/MRH/1466 25_1201/MRH/1469 SJS-ULE90130-SWALET-0164/5 SJS-ULE90130-SWALET-0164/5 25_1201/MRH/1474/5 25_1201/MRH/1474/5 09/10/09 09/10/09 25_1201/MRH/1471 the INF-CURR-2546/4/M 25_1201/MRH/1521 25_1201/MRH/1521					1	D		20,000	0	2,000	1,480	0	23,480	N/A	AI	23,480					
243	68		Forth Point Substation - lack of as-built information	24/11/2008	02/12/08 19/12/08 10/02/09 12/02/09 27/03/09 U/4/09 12/05/09	SJS-ULE90130-LET-0088/0 the INF-CORR-445 SJS-ULE90130-SWALET-0137/8 25_1201/BSW/1565 the INF-CORR-1096 25_1201/MRH/1479 the INF-CURR-2546/4/M 25_1201/MRH/1521							1			6,886	886	493	0	7,364	N/A	1A	7,364				
244			Building Plant Owner Agreements - Information required to support Court Proceedings (Clause 20.8 of Infraco Contract)	26/11/2008	26/11/08 11/12/08 19/12/08 20/12/08 23/01/09 26/01/09 26/01/09 04/02/09 10/02/09 12/02/09 12/02/09 27/03/09 09/04/09 09/10/09 19/10/09 15/09/09	SJS-ULE90130-LET-0089/4 SJS-ULE90130-LET-0089/4 SJS-ULE90130-LET-0090/7 SJS-ULE90130-LET-0091/7 25_1201/BSW/1360 25_1201/BSW/1369 SJS-ULE90130-LET-0092/4 SJS-ULE90130-SWALET-0136/4 SJS-ULE90130-SWALET-0137/8 SJS-ULE90130-SWALET-0137/8 the INF-CORR-745 12/02/09 the INF-CORR-719 12/02/09 27/03/09 09/04/09 09/10/09 25_1201/MRH/1521 the INF-CORR-2546/4/M 25_1201/MRH/1521					1			14,645	1,465	1,084	0	17,193	N/A	AI	17,193						
245			ScotRail/Network Rail - Major Event Notification	09/12/2008	09/12/08 12/12/08 19/12/08 19/12/08 24/12/08 24/12/08 24/12/08 25/09/09 15/09/09	25_1201/MRH/1059 the INF-CORR-510 25_1201/MRH/1184 25_1201/MRH/1196 the INF-CORR-1096 25_1201/BSW/2543 25_1201/BSW/2543 the INF-CORR-1231/MP 25_1201/MRH/1521						4			U	U	U	U	U	U	1	5A	0				
246			Notified Departure due to the issue of SCS Design programme V36.	10/12/2008	19/03/09 06/04/09 06/07/09 23/10/09	25_1201/BSW/1239 25_1201/BSW/1635 25_1201/BSW/1635 the INF-CORR-1961/DC										0	0	0	0	0		AI	0				
247			Notified Departure due to the issue of SCS Design programme V37.	10/12/2008	19/03/09 06/07/09 23/10/09	25_1201/BSW/1232 the INF-CORR-1096 the INF-CORR-1961/DC											0	0	0	0		AI	0				
248			Notified Departure due to the issue of SCS Design programme V38.	10/12/2008	19/03/09 06/07/09 23/10/09	25_1201/BSW/1232 the INF-CORR-1096 the INF-CORR-1961/DC											0	0	0	0		AI	0				
249			Notified Departure due to the issue of SCS Design programme V39.	10/12/2008	19/03/09 06/07/09 23/10/09	25_1201/BSW/1232 the INF-CORR-1096 the INF-CORR-1961/DC											0	0	0	0		AI	0				
250			Leam Valley - Changes 100-350 - additional work carried out during 'exchange' period	27/04/2009	23/05/09 04/09/09 04/09/09 06/11/09	25_1201/MRH/2546/4/M the INF-CORR-2380/TC the INF-CORR-2380/TC the INF-CORR-2771/5/1										48,946	0	8,566	3,822	66,032	86,032	N/A	1B C	0			
251			IFC Drawing Changes - Section 1C OLE Layout	12/12/2008	26/09/09 04/03/09 23/03/09 24/03/09 01/04/09 21/04/09	25_1201/MRH/1479 the INF-CORR-1072 the INF-CURR-1096 25_1201/BSW/2543 the INF-CORR-1266/5B										0	0	0	0	0		1C	0				
252			IFC Drawing Changes - Section 1C Track Horizontal Alignment	12/12/2008	26/09/09 04/03/09 23/03/09 25/03/09 14/04/09	25_1201/MRH/1479 the INF-CORR-1072 the INF-CURR-1096 25_1201/MRH/2082 the INF-CORR-2771/5/1										0	0	0	0	0	0	N/A	1C	0			
253			IFC Drawing Changes - Section 1C Track Vertical Alignment	12/12/2008	19/01/09 05/03/09 07/04/09 20/04/09 11/05/09 09/10/09 25/10/09 17/11/09	the INF-CORR-1072 the INF-CURR-1096 the INF-CORR-1157 25_1201/MRH/2339 the INF-CURR-2280/MB 25_1201/BSW/2543 the INF-CORR-1096 25_1201/MRH/4033									0	0	0	0	0	0		1C	0				

ETN INFRACON NOTIFICATION OF THE CHANGE (INTC)

Withdrawn/Superseded/no cost
Delay Only

Ref	Title	Description	Date Notified	Date of further letters	Letter Ref	Agreed in principle	TRC7	Estimate Band?	Change Order?	Type	Change Type	Pricing Method	Value Estimate (GBP)											Section	Change Order Value							
													£ Agreed	£ Not Agreed	£ Sub-Total	CAF	Siemens	Edinger	SOSS	Sub-Total	LH & P	Construction	Other			Labour	£ Agreed	£ Not Agreed	Part or V/E	Number		
254	254	IFC Drawing Changes - Section 1C - Traffic Management Removal by others of materials from central reserve on Princes Street Additional Trial Works at Leith Walk - Changes: 145 to 160 Feasibility Study (Design Only) for North Access to ADM Miling	12/1/2008	12/1/2008	25.1.201/AMH/153 25.1.201/AMH/152 25.1.201/AMH/154 25.1.201/AMH/155 25.1.201/AMH/156 25.1.201/AMH/157 25.1.201/AMH/158 25.1.201/AMH/159 25.1.201/AMH/160 25.1.201/AMH/161 25.1.201/AMH/162 25.1.201/AMH/163 25.1.201/AMH/164 25.1.201/AMH/165 25.1.201/AMH/166 25.1.201/AMH/167 25.1.201/AMH/168 25.1.201/AMH/169 25.1.201/AMH/170			N/A	M						0	0	0	0	0	0	0	0	0	0	0	0	0	1C	0			
255	255	Removal by others of materials from central reserve on Princes Street	12/1/2008	25/2/2009	25.1.201/AMH/141 25.1.201/AMH/142 25.1.201/AMH/143 25.1.201/AMH/144 25.1.201/AMH/145 25.1.201/AMH/146 25.1.201/AMH/147 25.1.201/AMH/148 25.1.201/AMH/149 25.1.201/AMH/150 25.1.201/AMH/151 25.1.201/AMH/152 25.1.201/AMH/153 25.1.201/AMH/154 25.1.201/AMH/155 25.1.201/AMH/156 25.1.201/AMH/157 25.1.201/AMH/158 25.1.201/AMH/159 25.1.201/AMH/160 25.1.201/AMH/161 25.1.201/AMH/162 25.1.201/AMH/163 25.1.201/AMH/164 25.1.201/AMH/165 25.1.201/AMH/166 25.1.201/AMH/167 25.1.201/AMH/168 25.1.201/AMH/169 25.1.201/AMH/170			N/A							0	0	0	0	0	0	0	0	0	0	0	0	0	0	1C,1D	0		
256	256	IFC Drawing Changes - Section 1C - Traffic Management Removal by others of materials from central reserve on Princes Street	09/1/2008	09/1/2008	25.1.201/AMH/104 25.1.201/AMH/105 25.1.201/AMH/106 25.1.201/AMH/107 25.1.201/AMH/108 25.1.201/AMH/109 25.1.201/AMH/110 25.1.201/AMH/111 25.1.201/AMH/112 25.1.201/AMH/113 25.1.201/AMH/114 25.1.201/AMH/115 25.1.201/AMH/116 25.1.201/AMH/117 25.1.201/AMH/118 25.1.201/AMH/119 25.1.201/AMH/120 25.1.201/AMH/121 25.1.201/AMH/122 25.1.201/AMH/123 25.1.201/AMH/124 25.1.201/AMH/125 25.1.201/AMH/126 25.1.201/AMH/127 25.1.201/AMH/128 25.1.201/AMH/129 25.1.201/AMH/130 25.1.201/AMH/131 25.1.201/AMH/132 25.1.201/AMH/133 25.1.201/AMH/134 25.1.201/AMH/135 25.1.201/AMH/136 25.1.201/AMH/137 25.1.201/AMH/138 25.1.201/AMH/139 25.1.201/AMH/140 25.1.201/AMH/141 25.1.201/AMH/142 25.1.201/AMH/143 25.1.201/AMH/144 25.1.201/AMH/145 25.1.201/AMH/146 25.1.201/AMH/147 25.1.201/AMH/148 25.1.201/AMH/149 25.1.201/AMH/150 25.1.201/AMH/151 25.1.201/AMH/152 25.1.201/AMH/153 25.1.201/AMH/154 25.1.201/AMH/155 25.1.201/AMH/156 25.1.201/AMH/157 25.1.201/AMH/158 25.1.201/AMH/159 25.1.201/AMH/160 25.1.201/AMH/161 25.1.201/AMH/162 25.1.201/AMH/163 25.1.201/AMH/164 25.1.201/AMH/165 25.1.201/AMH/166 25.1.201/AMH/167 25.1.201/AMH/168 25.1.201/AMH/169 25.1.201/AMH/170													0	0	0	0	0	0	0	0	0	0	0	0	0	1B	0
257	257	Accommodation Works Future Proofing on behalf of New Ingleton Limited and Highland Properties Limited (Scotland)	08/1/2008	08/1/2008	12/1/2008 2/1/2008 3/1/2008 4/1/2008 5/1/2008 6/1/2008 7/1/2008 8/1/2008 9/1/2008 10/1/2008 11/1/2008 12/1/2008 1/1/2009 2/1/2009 3/1/2009 4/1/2009 5/1/2009 6/1/2009 7/1/2009 8/1/2009 9/1/2009 10/1/2009 11/1/2009 12/1/2009 1/1/2010 2/1/2010 3/1/2010 4/1/2010 5/1/2010 6/1/2010 7/1/2010 8/1/2010 9/1/2010 10/1/2010 11/1/2010 12/1/2010 1/1/2011 2/1/2011 3/1/2011 4/1/2011 5/1/2011 6/1/2011 7/1/2011 8/1/2011 9/1/2011 10/1/2011 11/1/2011 12/1/2011 1/1/2012 2/1/2012 3/1/2012 4/1/2012 5/1/2012 6/1/2012 7/1/2012 8/1/2012 9/1/2012 10/1/2012 11/1/2012 12/1/2012 1/1/2013 2/1/2013 3/1/2013 4/1/2013 5/1/2013 6/1/2013 7/1/2013 8/1/2013 9/1/2013 10/1/2013 11/1/2013 12/1/2013 1/1/2014 2/1/2014 3/1/2014 4/1/2014 5/1/2014 6/1/2014 7/1/2014 8/1/2014 9/1/2014 10/1/2014 11/1/2014 12/1/2014 1/1/2015 2/1/2015 3/1/2015 4/1/2015 5/1/2015 6/1/2015 7/1/2015 8/1/2015 9/1/2015 10/1/2015 11/1/2015 12/1/2015 1/1/2016 2/1/2016 3/1/2016 4/1/2016 5/1/2016 6/1/2016 7/1/2016 8/1/2016 9/1/2016 10/1/2016 11/1/2016 12/1/2016 1/1/2017 2/1/2017 3/1/2017 4/1/2017 5/1/2017 6/1/2017 7/1/2017 8/1/2017 9/1/2017 10/1/2017 11/1/2017 12/1/2017 1/1/2018 2/1/2018 3/1/2018 4/1/2018 5/1/2018 6/1/2018 7/1/2018 8/1/2018 9/1/2018 10/1/2018 11/1/2018 12/1/2018 1/1/2019 2/1/2019 3/1/2019 4/1/2019 5/1/2019 6/1/2019 7/1/2019 8/1/2019 9/1/2019 10/1/2019 11/1/2019 12/1/2019 1/1/2020 2/1/2020 3/1/2020 4/1/2020 5/1/2020 6/1/2020 7/1/2020 8/1/2020 9/1/2020 10/1/2020 11/1/2020 12/1/2020 1/1/2021 2/1/2021 3/1/2021 4/1/2021 5/1/2021 6/1/2021 7/1/2021 8/1/2021 9/1/2021 10/1/2021 11/1/2021 12/1/2021 1/1/2022 2/1/2022 3/1/2022 4/1/2022 5/1/2022 6/1/2022 7/1/2022 8/1/2022 9/1/2022 10/1/2022 11/1/2022 12/1/2022 1/1/2023 2/1/2023 3/1/2023 4/1/2023 5/1/2023 6/1/2023 7/1/2023 8/1/2023 9/1/2023 10/1/2023 11/1/2023 12/1/2023 1/1/2024 2/1/2024 3/1/2024 4/1/2024 5/1/2024 6/1/2024 7/1/2024 8/1/2024 9/1/2024 10/1/2024 11/1/2024 12/1/2024 1/1/2025 2/1/2025 3/1/2025 4/1/2025 5/1/2025 6/1/2025 7/1/2025 8/1/2025 9/1/2025 10/1/2025 11/1/2025 12/1/2025 1/1/2026 2/1/2026 3/1/2026 4/1/2026 5/1/2026 6/1/2026 7/1/2026 8/1/2026 9/1/2026 10/1/2026 11/1/2026 12/1/2026 1/1/2027 2/1/2027 3/1/2027 4/1/2027 5/1/2027 6/1/2027 7/1/2027 8/1/2027 9/1/2027 10/1/2027 11/1/2027 12/1/2027 1/1/2028 2/1/2028 3/1/2028 4/1/2028 5/1/2028 6/1/2028 7/1/2028 8/1/2028 9/1/2028 10/1/2028 11/1/2028 12/1/2028 1/1/2029 2/1/2029 3/1/2029 4/1/2029 5/1/2029 6/1/2029 7/1/2029 8/1/2029 9/1/2029 10/1/2029 11/1/2029 12/1/2029 1/1/2030 2/1/2030 3/1/2030 4/1/2030 5/1/2030 6/1/2030 7/1/2030 8/1/2030 9/1/2030 10/1/2030 11/1/2030 12/1/2030 1/1/2031 2/1/2031 3/1/2031 4/1/2031 5/1/2031 6/1/2031 7/1/2031 8/1/2031 9/1/2031 10/1/2031 11/1/2031 12/1/2031 1/1/2032 2/1/2032 3/1/2032 4/1/2032 5/1/2032 6/1/2032 7/1/2032 8/1/2032 9/1/2032 10/1/2032 11/1/2032 12/1/2032 1/1/2033 2/1/2033 3/1/2033 4/1/2033 5/1/2033 6/1/2033 7/1/2033 8/1/2033 9/1/2033 10/1/2033 11/1/2033 12/1/2033 1/1/2034 2/1/2034 3/1/2034 4/1/2034 5/1/2034 6/1/2034 7/1/2034 8/1/2034 9/1/2034 10/1/2034 11/1/2034 12/1/2034 1/1/2035 2/1/2035 3/1/2035 4/1/2035 5/1/2035 6/1/2035 7/1/2035 8/1/2035 9/1/2035 10/1/2035 11/1/2035 12/1/2035 1/1/2036 2/1/2036 3/1/2036 4/1/2036 5/1/2036 6/1/2036 7/1/2036 8/1/2036 9/1/2036 10/1/2036 11/1/2036 12/1/2036 1/1/2037 2/1/2037 3/1/2037 4/1/2037 5/1/2037 6/1/2037 7/1/2037 8/1/2037 9/1/2037 10/1/2037 11/1/2037 12/1/2037 1/1/2038 2/1/2038 3/1/2038 4/1/2038 5/1/2038 6/1/2038 7/1/2038 8/1/2038 9/1/2038 10/1/2038 11/1/2038 12/1/2038 1/1/2039 2/1/2039 3/1/2039 4/1/2039 5/1/2039 6/1/2039 7/1/2039 8/1/2039 9/1/2039 10/1/2039 11/1/2039 12/1/2039 1/1/2040 2/1/2040 3/1/2040 4/1/2040 5/1/2040 6/1/2040 7/1/2040 8/1/2040 9/1/2040 10/1/2040 11/1/2040 12/1/2040 1/1/2041 2/1/2041 3/1/2041 4/1/2041 5/1/2041 6/1/2041 7/1/2041 8/1/2041 9/1/2041 10/1/2041 11/1/2041 12/1/2041 1/1/2042 2/1/2042 3/1/2042 4/1/2042 5/1/2042 6/1/2042 7/1/2042 8/1/2042 9/1/2042 10/1/2042 11/1/2042 12/1/2042 1/1/2043 2/1/2043 3/1/2043 4/1/2043 5/1/2043 6/1/2043 7/1/2043 8/1/2043 9/1/2043 10/1/2043 11/1/2043 12/1/2043 1/1/2044 2/1/2044 3/1/2044 4/1/2044 5/1/2044 6/1/2044 7/1/2044 8/1/2044 9/1/2044 10/1/2044 11/1/2044 12/1/2044 1/1/2045 2/1/2045 3/1/2045 4/1/2045 5/1/2045 6/1/2045 7/1/2045 8/1/2045 9/1/2045 10/1/2045 11/1/2045 12/1/2045 1/1/2046 2/1/2046 3/1/2046 4/1/2046 5/1/2046 6/1/2046 7/1/2046 8/1/2046 9/1/2046 10/1/2046 11/1/2046 12/1/2046 1/1/2047 2/1/2047 3/1/2047 4/1/2047 5/1/2047 6/1/2047 7/1/2047 8/1/2047 9/1/2047 10/1/2047 11/1/2047 12/1/2047 1/1/2048 2/1/2048 3/1/2048 4/1/2048 5/1/2048 6/1/2048 7/1/2048 8/1/2048 9/1/2048 10/1/2048 11/1/2048 12/1/2048 1/1/2049 2/1/2049 3/1/2049 4/1/2049 5/1/2049 6/1/2049 7/1/2049 8/1/2049 9/1/2049 10/1/2049 11/1/2049 12/1/2049 1/1/2050 2/1/2050 3/1/2050 4/1/2050 5/1/2050 6/1/2050 7/1/2050 8/1/2050 9/1/2050 10/1/2050 11/1/2050 12/1/2050 1/1/2051 2/1/2051 3/1/2051 4/1/2051 5/1/2051 6/1/2051 7/1/2051 8/1/2051 9/1/2051 10/1/2051 11/1/2051 12/1/2051 1/1/2052 2/1/2052 3/1/2052 4/1/2052 5/1/2052 6/1/2052 7/1/2052 8/1/2052 9/1/2052 10/1/2052 11/1/2052 12/1/2052 1/1/2053 2/1/2053 3/1/2053 4/1/2053 5/1/2053 6/1/2053 7/1/2053 8/1/2053 9/1/2053 10/1/2053 11/1/2053 12/1/2053 1/1/2054 2/1/2054 3/1/2054 4/1/2054 5/1/2054 6/1/2054 7/1/2054 8/1/2054 9/1/2054 10/1/2054 11/1/2054 12/1/2054 1/1/2055 2/1/2055 3/1/2055 4/1/2055 5/1/2055 6/1/2055 7/1/2055 8/1/2055 9/1/2055 10/1/2055 11/1/2055 12/1/2055 1/1/2056 2/1/2056 3/1/2056 4/1/2056 5/1/2056 6/1/2056 7/1/2056 8/1/2056 9/1/2056 10/1/2056 11/1/2056 12/1/2056 1/1/2057 2/1/2057 3/1/2057 4/1/2057 5/1/2057 6/1/2057 7/1/2057 8/1/2057 9/1/2057 10/1/2057 11/1/2057 12/1/2057 1/1/2058 2/1/2058 3/1/2058 4/1/2058 5/1/2058 6/1/2058 7/1/2058 8/1/2058 9/1/2058 10/1/2058 11/1/2058 12/1/2058 1/1/2059 2/1/2059 3/1/2059 4/1/2059 5/1/2059 6/1/2059 7/1/2059 8/1/2059 9/1/2059 10/1/2059 11/1/2059 12/1/2059 1/1/2060 2/1/2060 3/1/2060 4/1/2060 5/1/2060 6/1/2060 7/1/2060 8/1/2060 9/1/2060 10/1/2060 11/1/2060 12/1/2060 1/1/2061 2/1/2061 3/1/2061 4/1/2061 5/1/2061 6/1/2061 7/1/2061 8/1/2061 9/1/2061 10/1/2061 11/1/2061 12/1/2061 1/1/2062 2/1/2062 3/1/2062 4/1/2062 5/1/2062 6/1/2062 7/1/2062 8/1/2062 9/1/2062 10/1/2062 11/1/2062 12/1/2062 1/1/2063 2/1/2063 3/1/2063 4/1/2063 5/1/2063 6/1/2063 7/1/2063 8/1/2063 9/1/2063 10/1/2063 11/1/2063 12/1/2063 1/1/2064 2/1/2064 3/1/2064 4/1/2064 5/1/2064 6/1/2064 7/1/2064 8/1/2064 9/1/2064 10/1/2064 11/1/2064 12/1/2064 1/1/2065 2/1/2065 3/1/2065 4/1/2065 5/1/2065 6/1/2065 7/1/2065 8/1/2065 9/1/2065 10/1/2065 11/1/2065 12/1/2065 1/1/2066 2/1/2066 3/1/2066 4/1/2066 5/1/2066 6/1/2066 7/1/2066 8/1/2066 9/1/2066 10/1/2066 11/1/2066 12/1/2066 1/1/2067 2/1/2067 3/1/2067 4/1/2067 5/1/2067 6/1/2067 7/1/2067 8/1/2067 9/1/2067 10/1/2067 11/1/2067 12/1/2067 1/1/2068 2/1/2068 3/1/2068 4/1/2068 5/1/2068 6/1/2068 7/1/2068 8/1/2068 9/1/2068 10/1/2068 11/1/2068 12/1/2068 1/1/2069 2/1/2069 3/1/2069 4/1/2069 5/1/2069 6/1/2069 7/1/2069 8/1/2069 9/1/2069 10/1/2069 11/1/2069 12/1/2069 1/1/2070 2/1/2070 3/1/2070 4/1/2070 5/1/2070 6/1/2070 7/1/2070 8/1/2070 9/1/2070 10/1/2070 11/1/2070 12/1/2070 1/1/2071 2/1/2071 3/1/2071 4/1/2071 5/1/2071 6/1/2071 7/1/2071 8/1/2071 9/1/2071 10/1/2071 11/1/2071 12/1/2071 1/1/2072 2/1/2072 3/1/2072 4/1/2072 5/1/2072 6/1/2072 7/1/2072 8/1/2072 9/1/2072 10/1/2072 11/1/2072 12/1/2072 1/1/2073 2/1/2073 3/1/2073 4/1/2073 5/1/2073 6/1/2073 7/1/2073 8/1/2073 9/1/2073 10/1/2073 11/1/2073 12/1/2073 1/1/2074 2/1/2074 3/1/2074 4/1/2074 5/1/2074 6/1/2074 7/1/2074 8/1/2074 9/1/2074 10/1/2074 11/1/2074 12/1/2074 1/1/2075 2/1/2075 3/1/2075 4/1/2075 5/1/2075 6/1/2075 7/1/2075 8/1/2075 9/1/2075 10/1/2075 11/1/2075 12/1/2075 1/1/2076 2/1/2076 3/1/2076 4/1/2076 5/1/2076 6/1/2076 7/1/2076 8/1/2076 9/1/2076 10/1/2076 11/1/2076 12/1/2076 1/1/2077 2/1/2077 3/1/2077 4/1/2077 5/1/2077 6/1/2077 7/1/2077 8/1/2077 9/1/2077 10/1/2077 11/1/2077 12/1/2077 1/1/2078 2/1/2078 3/1/2078 4/1/2078 5/1/2078 6/1/2078 7/1/2078 8/1/2078 9/1/2078 10/1/2078 11/1/2078 12/1/2078 1/1/2079 2/1/2079 3/1/2079 4/1/2079 5/1/2079 6/1/2079 7/1/2079 8/1/2079 9/1/2079 10/1/2079 11/1/2079 12/1/2079 1/1/2080 2/1/2080 3/1/2080 4/1/2080 5/1/2080 6/1/2080 7/1/2080 8/1/2080 9/1/2																											

ETN INFRACO NOTIFICATION of the CHANGE (INTC)
CONFIDENTIAL

Withdrawn/Superseded/no cost
Delay Only
Change Order issued

Ref	Rets. No	Change Order TCO	Description	Date Notified	Date of further letters	Letter Ref	Agreed in principle	TNC? 1=Y	Estimate issued? 1=Y, 0=N	Change Order? 1=Y	Type See Notes	Change Type See Notes	Pricing Method See Notes	Value Estimate (GBP)										Allocation of Cost		Section See Notes	Change Order Value
														£ Submitted	UH & P	Consent/turn Prelims	Other Prelims	Total	£ Agreed	£ Not Agreed	Prism or VE	Number					
265			Accommodation Works Section 2A Access Retaining Wall - Verity House	18/12/2008	23/02/09 11/03/09 17/03/09 07/04/09 14/04/09 20/05/09 29/09/09 13/11/09	25.1.201/AD/212 25.1.201/UL/1639 tie INF CORR 941 25.1.201/UL/1964 tie INF CORR 1151 25.1.201/UL/2275 tie INF CORR 2089/MP 25.1.201/MPH/3632 tie INF CORR 2841/JO 25.1.201/MPH/4046	1				M	4	1,2,3	0	58,016	0	0	58,016	0	4,293	10,163	72,462	22,171	50,291	VPS	2	0
266		25	Undertake Monthly Track Monitoring of Network Rail Infrastructure on East Coast North Line in vicinity of Gogar Depot	16/12/2008	19/12/08 1/01/09 26/02/09 26/02/09 27/02/09 03/03/09 05/03/09 05/03/09 11/03/09 27/03/09 29/04/09	25.1.201/GC/224 25.1.201/GC/1534 tie e-mail tdi e-mail tie INF CORR 792 25.1.201/GC/1784 25.1.201/GC/1813 E-mail tie-BBSC 25.1.201/GC/1813 tie INF CORR 1108 tie INF CORR 1334/Wb	1		1		I	1	3	U	3,980	U	U	3,980	388	295	897	5,369	4,673	897	N/A	6	4,673
267			Carry out Scottish Water Diversion at Gogar Roundabout	18/12/2008	05/01/09 05/01/09 09/01/09 09/01/09 12/01/09 29/01/09 06/02/09 09/02/09 23/02/09 26/02/09 04/03/09 13/08/09 01/09/09 22/10/09	25.1.201/MPH/1234 25.1.201/MPH/1238 25.1.201/UL/1250 25.1.201/UL/1261 25.1.201/UL/1269 tie INF CORR 647 25.1.201/MPH/1497 tie INF CORR 1428/AS 25.1.201/UL/2596 25.1.201/UL/2928 25.1.201/UL/3218 tie INF CORR 2022/GMcS 25.1.201/UL/3396 tie INF CORR 2645/GMcS	1				M	1	3	0	75,738	0	0	75,738	7,574	5,605	13,254	102,170	39,537	62,633	VPS	5C	0
268			Carry out Scottish Power Diversion at Gogar Roundabout	18/12/2008	05/01/09 05/01/09 12/01/09 15/01/09 20/01/09 25/01/09 29/01/09 30/01/09 06/02/09 06/02/09 18/02/09 23/02/09 04/03/09 06/03/09 16/03/09 27/03/09 03/04/09 08/05/09 18/05/09 11/09/09 17/09/09 16/10/09 22/10/09	25.1.201/MPH/1235 25.1.201/MPH/1239 tie INF CORR 579 25.1.201/UL/1269 tie INF CORR 605 25.1.201/MPH/1388 tie INF CORR 648 tie INF CORR 605 25.1.201/MPH/1496 25.1.201/MPH/1502 tie INF CORR 785 25.1.201/MPH/1706 25.1.201/UL/1794 tie INF CORR 907 25.1.201/MPH/1935 tie INF CORR 1127 tie INF CORR 1145 tie INF CORR 1416/MP 25.1.201/MPH/2658 tie INF CORR 2348/SC 25.1.201/MPH/2535 25.1.201/MPH/3623 tie INF CORR 2553/SC	1				M	1	3	U	10,448	U	U	10,448	U	773	1,828	13,050	U	13,050	VPS	5C	U
269		20	Instructions arising from Trackform Development Workshop	18/12/2008	07/01/09 07/01/09 29/01/09 05/02/09 11/02/09 13/02/09 18/02/09 27/02/09 28/02/09 29/01/09	tie INF CORR 548 25.1.201/UL/1245 25.1.201/UL/1249 SDS-ULE90130-SW-LET-01360 25.1.201/UL/1510 25.1.201/UL/1561 tie INF CORR 756 25.1.201/UL/1647 25.1.201/UL/1756 25.1.201/UL/2224 25.1.201/UL/2156	1		1		I	1	1,2,3	316,063	0	0	316,063	31,806	23,389	0	371,058	371,058	0	N/A	All	371,058	
270			RBS Tramstop - Provide an Estimate for diversion of LV Power and Water supplies crossing the tram track	17/12/2008	07/01/09 09/01/09 06/03/09 12/02/09 12/03/09 17/03/09 09/04/09 16/04/09 16/04/09 23/04/09 01/09/09 26/09/09 02/10/09 08/10/09 22/10/09	tie INF CORR 544 25.1.201/UL/1248 25.1.201/UL/1263 tie INF CORR 954 25.1.201/UL/1591 tie INF CORR 1005 25.1.201/MPH/1968 tie INF CORR 1229/AS 25.1.201/UL/2304 25.1.201/MPH/2318 25.1.201/UL/2552 SDS-ULE90130-05-LET-00423 SDS-ULE90130-SW-LET-01731 25.1.201/UL/3680 25.1.201/UL/3727 tie INF CORR 2648/GMcS	1				M	1	3	9,775	4,705	U	U	14,481	977	1,072	824	17,353	U	17,353	VPS	5C	U
271		19	Road Construction Details - Construction Methodology Statements for Establishing Ground Conditions Required depth of reconstruction	18/12/2008	07/01/09 07/01/09 29/01/09 06/02/09 10/02/09 10/02/09 13/02/09 18/02/09 27/02/09 19/03/09 23/03/09 31/03/09 22/05/09 26/05/09 10/08/09 31/08/09 18/09/09 29/09/09 16/10/09	25.1.201/UL/1246 25.1.201/UL/1250 SDS-ULE90130-SW-LET-01369 25.1.201/UL/1948 SDS-ULE90130-01-LET-01386 25.1.201/UL/1548 tie INF CORR 755 25.1.201/UL/1648 25.1.201/UL/1757 SDS-ULE90130-SW-LET-01469 tie INF CORR 1075 25.1.201/UL/1538 tie INF CORR 1509/RB 25.1.201/UL/2224 25.1.201/UL/2350 25.1.201/UL/2400 tie INF CORR 2142/RB 25.1.201/MPH/3627 tie INF CORR 2407/RB	1				M	1	1,2,3	317,326	0	0	317,326	31,733	23,482	0	372,540	372,540	0	N/A	All	372,540	
272		11	Create a starter layer below subsoil level at Carrcknowe	18/12/2008	09/01/09 26/01/09 04/02/09 06/02/09 18/03/09 03/04/09 09/04/09 08/05/09 13/05/09	tie INF CORR 545 25.1.201/UL/1254 tie INF CORR 596 25.1.201/MPH/1528 tie INF CORR 927 25.1.201/MPH/1997 tie INF CORR 1138 25.1.201/MPH/2240 tie INF CORR 1398/MP 25.1.201/MPH/2608	1				I	1	4	0	77,308	0	0	77,308	0	5,721	13,529	96,558	83,029	13,529	N/A	5B	83,029

CEC00624424_0185

Ref	Intc Order ID	Description	Date Notified	Date of further letters	Letter Ref	Agreed in principle	TNC?	Estimate issued?	Change Order?	Type	Change Type	Pricing Method	SDS	Edinger	Siemens	CAF	Sub-total	LH&P	Construction Problems	Other Reasons	Total	£ Not Agreed	£ Agreed	Allocation of Cost	Section	Location	Change Order Value
281		Revised proposals for Cathedral Lane Sub-station	25/01/2019																								
282		Request for instruction to deal with Japanese Knotweed at rear of First ScotRail Haymarket Depot - Retaining Wall W4	25/01/2019																								
283		Edinburgh Park Bridge (S27) - Part 3 Barge Formation	25/01/2019																								
284		Houses Road Retaining Wall 4 - Options Report	30/01/2019																								
285		Notified Departure due to the issue of SDS design programme V4.0	02/02/2019																								
286		Prices Sheet Construction Works - Change to specification - full depth reconstruction	06/02/2019																								
287		North Point Traffic Signal - Section 1A4 - Widened Crossing	06/02/2019																								
288	19	Deviation Road Ballvehicle payload	15/02/2019																								
289		Lynxway change at Hawthornvale - Section 1A4	09/02/2019																								
290		CAF Air Supply	09/02/2019																								
291		CAF - Lifting System	09/02/2019																								
292		CAF - Lifting System	09/02/2019																								
293		CAF - Lifting System	09/02/2019																								
294	37	CAF - Lifting System	09/02/2019																								
295		CAF - Lifting System	09/02/2019																								
296		CAF - Lifting System	09/02/2019																								
297		CAF - Lifting System	09/02/2019																								
298		CAF - Lifting System	09/02/2019																								
299		CAF - Lifting System	09/02/2019																								
300		CAF - Lifting System	09/02/2019																								

ETN INFRACO NOTIFICATION of the CHANGE (INTC)
CONFIDENTIAL

Withdrawn/Superseded/no cost
Delay Only
Change Order issued

Ref	Rets. No	Change Order TCO	Description	Date Notified	Date of further letters	Letter Ref	Agreed in principle	TNC? 1=Y	Estimate issued? 1=Y, 0=N	Change Order? 1=Y	Type See Notes	Change Type See Notes	Pricing Method See Notes	Value Estimate (GBP)										Allocation of Cost		Section	Change Order Value	
														£ Submitted	£ Sub-total	UH & P	Consortium Prelims	Other Prelims	Total	£ Agreed	£ Not Agreed	Psurm or VE	Number					
300			Network Raifs requirement for CAT 3 checking	10/02/2009	10/02/09 26/03/09 26/03/09 08/04/09 08/04/09 08/05/09 08/06/09 27/08/09	25.1.201/GC/636 25.1.201/GC/1536 Int CORR 892 Int CORR 893 25.1.201/IR/2202 25.1.201/IR/2201 Int INF CORR 1440/AB 25.1.201/GC/2819 Int INF CORR 2212/AB 25.1.201/GC/0165					D	1	3.4	0	0	0	0	0	0	0	0	0	0	0	0	N/A	AI	0
301			Develop and seek approval for enabling works for diversionary route from Princes Street to George Street/Queen Street	26/01/2009	11/02/09 26/02/09 11/03/09 12/03/09 18/03/09 09/04/09 16/04/09 16/04/09 30/04/09 07/05/09 20/06/09	Int INF CORR 503 25.1.201/MH/1549 25.1.201/IL/1666 Int INF CORR 850 Int INF CORR 766 25.1.201/IL/1596 Int INF CORR 880/MP 25.1.201/MH/2319 Int INF CORR 1259/DB 25.1.201/IL/2484 25.1.201/SK/PO1/2495 Int INF CORR 2036/MP	1		1	I	1	3	0	109,642	0	0	109,642	10,964	8,114	19,187	147,908	120,257	27,651	N/A	1D	0		
302			Protection of live utilities at Russell Road Bridge during construction	03/02/2009	11/02/09 12/02/09 12/03/09 18/03/09 03/04/09 09/04/09 16/04/09 06/05/09 04/09/09 22/09/09	Int INF CORR 993 25.1.201/IL/1552 25.1.201/MH/1587 Int INF CORR 993 25.1.201/IL/2012 Int INF CORR 1139 25.1.201/IL/2249 Int INF CORR 1256/TC 25.1.201/IL/2530 Int INF CORR 2287/AB 25.1.201/IL/2550					M	1	3.4	0	0	0	0	0	0	0	0	0	0	0	0	N/A	2	0
303	37	29	Interior layout of frames	05/02/2009	12/02/09 23/02/09 12/05/09 05/06/09 29/06/09	Int INF CORR 1553 CAF-ETN-0114 CAF-ETN-0133 Int INF CORR 1458 Int INF CORR 1609/CB CAF-ETN-0276	1	1	1	1	I	1	3.4	0	0	0	313,221	313,221	0	0	0	313,221	313,221	0	0	N/A	AI	313,221
304	49	104	Provisional Sum for Extra Over for Shell Grip at Junctions	12/02/2009	23/02/09 09/05/09 15/05/09 19/05/09 16/07/09 26/08/09 31/08/09 05/10/09 12/10/09 16/10/09 19/10/09 27/10/09 29/10/09	25.1.201/IL/1590 25.1.201/MH/1719 Int INF CORR 1433/AS 25.1.201/MH/2641 Int INF CORR 1494/JO 25.1.201/IL/3092 Int INF CORR 2123/MP 25.1.201/ADR/3400 25.1.201/IL/3695 Int INF CORR 2601/JO Int INF CORR 2407/AB Int INF CORR 2640/JO 25.1.201/IL/3890 Int INF CORR 2658/JO	1	1	1	M	1	3	0	835,773	0	0	835,773	ind	61,847	146,260	1,043,880	156,252	887,628	DPS	AI	156,252		
305			Crawley tunnel - insufficient ground cover	12/02/2009	12/02/09 16/02/09 12/03/09 17/03/09 12/06/09 04/08/09 10/08/09 29/08/09 08/10/09 29/10/09	25.1.201/SR/1597 25.1.201/SR/1604 25.1.201/MH/1604 Int INF CORR 1004 25.1.201/MH/1968 25.1.201/JH/2847 25.1.201/JH/2207 Int INF CORR 1979/CN Mackenzie M204/CB/AB/ES6 25.1.201/CB/9/JO 25.1.201/JAC/3873					M	1	1,2,3	0	0	0	0	0	0	0	0	0	0	0	0	N/A	1C	0
306			Discovery of underground structure on Leith Walk	16/02/2009	12/03/09 13/03/09 30/03/09 08/04/09 14/05/09 20/08/09	Int INF CORR 672 25.1.201/GC/602 Int INF CORR 986 25.1.201/SR/1930 25.1.201/JH/2132 25.1.201/JH/2218 25.1.201/GC/2570 25.1.201/EGC/3326	1				M	1	3.4	0	0	0	0	0	0	0	0	0	0	0	0	N/A	1C	0
307		76A	Contaminated Soil assessment at Haymarket Depot	16/02/2009	07/05/09 22/05/09 22/05/09 27/05/09 11/05/09 25/06/09 20/08/09 26/08/09 02/09/09 10/11/09	25.1.201/GA/4494 E-mail tie - bb Int INF CORR 1452/GMG 25.1.201/MH/2733 Int INF CORR 1553/CB 25.1.201/OG/2927 Int INF CORR 2069/CB Int INF CORR 2129/AB Int INF CORR 2237/CB 25.1.201/GC/2966	1	1	1	M	1	3.4	0	40,761	0	0	40,761	4,076	3,016	7,133	54,987	54,987	0	0	0	N/A	2	54,987
308			Additional excavation at Carnock Knowe South Abutment	29/02/2009	29/04/09 03/05/09 15/05/09 02/06/09 23/09/09 16/10/09	25.1.201/OG/2476 25.1.201/OG/2476 Int INF CORR 1425/TC 25.1.201/MH/2644 Int INF CORR 1578/MP Int INF CORR 2157/TC 25.1.201/MH/2293			N/A		M	1	3.4	0	0	0	0	0	0	0	0	0	0	0	0	N/A	5B	0
309			Edinburgh Park Bridge (S27) - South Abutment Base Formation	23/02/2009	13/03/09 19/03/09 02/04/09 08/05/09 21/08/09 28/08/09 08/10/09	25.1.201/GC/636 Int INF CORR 1028 25.1.201/GA/2008 Int INF CORR 1180 25.1.201/GA/2340 E-mail tie-BSC Int INF CORR 2098/MP 25.1.201/CF/8733	1		1		M	1	3.4	0	14,455	0	0	14,455	0	1,070	2,530	18,054	7,527	10,528	N/A	5B	0	
310		38	Gogar Landfill Scottish Water Utility Diversion	12/02/2009	18/02/09 30/04/09 09/05/09 29/06/09 05/08/09 27/08/09 27/08/09 23/09/09 05/10/09	Int INF CORR 724 25.1.201/IL/1666 25.1.201/IL/2486 Int INF CORR 1427/AS 25.1.201/JH/2968 SDS-ULE90130-07-LET-00400 25.1.201/JH/3365 25.1.201/CF/5371 Int INF CORR 2473/AS 25.1.201/IL/3696	1	1	1	I	1	3.4	16,284	3,022	0	0	19,306	1,931	1,429	529	23,195	0	23,195	0	0	N/A	7	0
311			IFC Drawing Changes - Section 1A - Drainage	22/05/2009	11/09/09 22/09/09 01/10/09	25.1.201/JO/1907 Int INF CORR 224/MB 25.1.201/MH/2540 Int INF CORR 2540/MB					M	1	1,2,3	0	0	0	0	0	0	0	0	0	0	0	0	N/A	1A	0
312			IFC Drawing Changes - Leith Walk	25/02/2009	04/09/09	25.1.201/JO/1737 Int INF CORR 2277/PD					M	1	1,2,3	0	0	0	0	0	0	0	0	0	0	0	0	N/A	1B	0
313			IFC Drawing Changes - Section 7 Soft Landscaping	16/04/2009	09/05/09 13/05/09 23/08/09 22/09/09 13/11/09	25.1.201/OG/2309 Int INF CORR 1389/CB 25.1.201/MH/2616 Int INF CORR 2155/GMG 25.1.201/MH/2557 Int INF CORR 2528/GMG	1		U		M	1	1,2,3	U	U	U	U	U	U	U	U	U	U	U	U	N/A	/	U
314			IFC Drawing Changes - Section 7 Track Vertical and Horizontal Alignment Drawings	16/04/2009	16/07/09 30/07/09 11/11/09	25.1.201/OG/2310 Int INF CORR 1793/DS 25.1.201/GC/6169 Int INF CORR 2611			1		M	1	1,2,3	0	276,696	0	0	276,696	ind	20,476	48,422	345,593	0	345,593	N/A	7	0	

CEC00624424_0188

ETN INFRACO NOTIFICATION OF THE CHANGE (INTC)
CONFIDENTIAL



Table with columns: Ref, Intc, Change Order, Description, Date Notified, Date of further letters, Letter Ref, Agreed in principle, TRC7, Estimate Band?, Change Order?, Type, Change Type, Pricing Method, Value Estimate (GBP), Allocation of Cost, Section, Change Order Value.

CEC00624424_0190

ETN INFRACO NOTIFICATION of the CHANGE (INTC)
CONFIDENTIAL

Ref	Rets. No	Change Order TCO	Description	Date Notified	Date of further letters	Letter Ref	Agreed in principle	TNC? 1=Y	Estimate issued? 1=Y, 0=N	Change Order? 1=Y	Type See Notes	Change Type See Notes	Pricing Method See Notes	Value Estimate (GBP)										Allocation of Cost		Section See Notes	Change Order Value				
														£ Submitted	Sub-total	UH & P	Consortium Prelims	Other Prelims	Total	£ Agreed	£ Not Agreed	Psrm or VE	Number								
354			Replace MASS barriers at George Street, Hanover Street and Frederick Street	11/03/2009	02/04/09 06/05/09	25.1.201/GC/B72 25.1.201/COH/117/ 25.1.201/GC/2549					D	1	4	U	1,728	U	U	1,728	173	128	302	2,331	U	2,331	N/A		1C,U	U			
357			Trial Holes in Princes Street	11/03/2009	09/04/09	25.1.201/GC/B76 25.1.201/COH/1212/MP	1				M	1	4	0	0	0	0	0	0	0	0	0	0	0	0	0	N/A		1C,D	0	
358			Incomplete MJUFA Works at the Princes Street/Mound Junction	17/03/2009	16/04/09 17/04/09 01/05/09 27/05/09	25.1.201/IL/1955 25.1.201/IL/DR/2329 25.1.201/IL/MH/2506 25.1.201/IL/COH/1522/DB					M	1	3,4	0	0	0	0	0	0	0	0	0	0	0	0	0	N/A		1C	0	
359			Haymarket Junction- Underground Chamber at Clifton Terrace	14/03/2009	11/03/09 08/05/09 03/07/09 16/07/09 20/07/09 23/07/09 07/08/09 19/08/09 21/08/09 26/08/09 31/08/09 16/10/09 24/10/09 29/10/09	25.1.201/IL/1948 25.1.201/COH/141b/CN 25.1.201/IL/MJFA/15263/AH/GB 25.1.201/IL/COH/1772/TC 25.1.201/IL/SN/3091 25.1.201/IL/S/122 25.1.201/IL/COH/1981/CN 25.1.201/IL/MH/3009 25.1.201/IL/COH/2083 25.1.201/IL/COH/2148/CN 25.1.201/IL/MH/3483 25.1.201/IL/COH/240/WH SDS-ULE90130-SW-LET-0177/3 SDS-ULE90130-D1-LET-01065					M	1	3,4	0	0	0	0	0	0	0	0	0	0	0	0	0	N/A		1D	0	
360	46	54a	Alteration of Design at Forth Ports Road B	16/04/2009	23/04/09 23/04/09 24/04/09 08/05/09 11/05/09 13/05/09 15/05/09 24/05/09 27/05/09 08/06/09 10/06/09 12/06/09	25.1.201/IL/COH/1280/CB 25.1.201/IL/MH/2372 25.1.201/IL/MH/2378 SDS-ULE90130-SW-LET-01519 25.1.201/IL/MH/2576 SDS-ULE90130-D1-LET-01017 25.1.201/IL/MH/2606 25.1.201/IL/COH/1458/MP 25.1.201/IL/SN/114 25.1.201/IL/COH/1515/DS 25.1.201/IL/MH/2818 25.1.201/IL/COH/1629/DC 25.1.201/IL/MH/2862	1	1	1	1	I	1	1,2,3	10,544	0	0	0	0	10,164	1,016	752	0	11,933	11,933	-0	0	DPS		1A	11,933	
361	41	55	Scottish Power Utility Diversion near Murrayfield Station	24/03/2009	(received date) 20/05/09 05/06/09 26/08/09 25/09/09	25.1.201/IL/COH/1052 25.1.201/IL/COH/2674 25.1.201/IL/COH/1557/GMcG 25.1.201/IL/COH/2114/TC 25.1.201/IL/MH/3591	1	1	1	1	I	1	3,4	0	6,957	0	0	0	6,957	0	515	1,218	8,690	8,690	-0	0	VPS		5A	8,690	
362		106	Edinburgh Park bridge - North and South Approach Ramps additional earthworks	14/04/2009	08/05/09 08/05/09 01/06/09 25/06/09 11/09/09 21/09/09 02/10/09 09/10/09 13/11/09	25.1.201/IL/COH/264 25.1.201/IL/COH/2674 25.1.201/IL/COH/1431/TC 25.1.201/IL/COH/1564/CB 25.1.201/IL/CF/2935 25.1.201/IL/CFW/3490 25.1.201/IL/COH/240/MP 25.1.201/IL/CF/367c 25.1.201/IL/COH/2608/CB 25.1.201/IL/COH/2611/C	1		1		M	1	1,2,3	0	148,118	0	0	0	148,118	0	10,961	25,921	185,000	185,000	0	0	N/A		5B	185,000	
363			Traffic Management - Provide Wider Area Signage to Princes Street	2/03/2009	16/04/09 07/05/09 26/08/09 28/08/09 13/11/09	25.1.201/GC/2118 25.1.201/IL/COH/1279/CB 25.1.201/IL/COH/2553 25.1.201/IL/COH/2171/DB 25.1.201/IL/COH/2176/DB/CB 25.1.201/GC/4008					D	1	3,4	0	8,820	0	0	0	8,820	882	653	1,544	11,899	0	11,899	N/A		1C,D	0		
364			New Manhole (MH1) at Babine Place	31/03/2009	30/04/09 08/05/09 08/10/09	25.1.201/GC/2142 25.1.201/IL/COH/2494 25.1.201/IL/COH/1444/CB 25.1.201/IL/S/26					M	1	3,4	U	1,395	U	U	1,395	U	103	U	1,498	886	832	0	0	N/A		2	U	
365			Water Area Fly P & H Survey and Proposals	08/04/09	25/03/09 08/04/09 16/04/09 23/04/09 20/06/09	SDS-ULE90130-SW-LET-0147/ 25.1.201/IL/MH/2206 25.1.201/IL/COH/2214 25.1.201/IL/COH/1286/DS 25.1.201/IL/MH/2381 25.1.201/IL/COH/3329					I	1	3,4	0	0	0	0	0	0	0	0	0	0	0	0	0	N/A		N/A	0	
366			Gogarburn Bridge East Abutment - excess ground water	01/05/2009	02/06/09 23/06/09 03/09/09	25.1.201/GC/2496 25.1.201/IL/COH/1576/AS 25.1.201/IL/COH/2862 25.1.201/IL/COH/2273/AS					M	1	4	U	2,864	U	U	2,864	286	212	501	3,864	U	3,864	N/A		7A	U			
367	63		Haymarket Station - Network Rail Access Doorway	22/04/2009	03/04/09 28/08/09	SDS-ULE90130-D1-LET-00106 25.1.201/IL/MH/2360 25.1.201/IL/COH/2186/DC	1	1	0		D	1	3,4	0	0	0	0	0	0	0	0	0	0	0	0	0	N/A		2	0	
368	42		Demolish all Structures on Plots no.s 97 and 102 near Roseburn Street	27/03/2009	09/04/09 16/04/09 08/05/09	25.1.201/IL/COH/1088 25.1.201/IL/COH/2252 25.1.201/IL/COH/2296 25.1.201/IL/COH/1415/MP	1	1	0		I	1	3,4	0	0	0	0	0	0	0	0	0	0	0	0	0	N/A		5A	0	
369			Temporary works solution to maintain Thus and C & W services and dismantle water main at AB Underpass	14/04/2009	23/04/09 06/05/09 15/05/09 20/07/09 31/07/09 04/08/09 12/11/09	25.1.201/GC/2267 25.1.201/IL/COH/1307/AS 25.1.201/IL/COH/2636 25.1.201/IL/COH/1441/AS 25.1.201/IL/MH/3095 25.1.201/IL/COH/1883/AS 25.1.201/IL/MH/3206 25.1.201/IL/COH/2536/AS 25.1.201/IL/COH/2802/GMcG					M	1	3,4	0	0	0	0	0	0	0	0	0	0	0	0	0	N/A		5C	0	
370			Existing Ground levels at Edinburgh Park Bridge	14/04/2009	22/04/09 01/06/09 03/07/09 08/10/09	25.1.201/GC/2688 25.1.201/IL/COH/1303/TC 25.1.201/IL/COH/1564/CB 25.1.201/IL/CF/2942 25.1.201/IL/CF/3732	1		1		M	1	1,2,3,4	0	70,694	0	0	0	70,694	ind	5,231	12,371	88,297	49,481	38,816	0	0	N/A		5B	0
371	43	75	Transfer of MJUFA Utility Diversion - Section 5C - Conflict Schedule 5 CBT/D.05 - BT	09/04/2009	16/04/09 30/04/09 21/05/09 17/06/09 08/07/09 28/08/09 17/09/09	25.1.201/IL/COH/1206/JO 25.1.201/IL/COH/2208 25.1.201/IL/COH/1356 25.1.201/IL/COH/2693 25.1.201/IL/COH/1660/GMcG 25.1.201/IL/COH/3017 25.1.201/IL/COH/2154/GMcG 25.1.201/IL/COH/3524	1	1	1	1	I	1	3,4	0	1,357	0	0	0	1,357	0	100	238	1,695	856	839	0	0	VPS	2	5C	856
372	44		Transfer of MJUFA Utility Diversion - Section 5A - Conflict Schedule 5 A S/P/D.08 - Scottish Power	09/04/2009	16/04/09 22/05/09 27/05/09 26/08/09 26/09/09	25.1.201/IL/COH/1337/JO 25.1.201/IL/COH/2207 25.1.201/IL/COH/1494/TC 25.1.201/IL/MH/2736 25.1.201/IL/COH/2114/TC 25.1.201/IL/MH/2651					I	1	3,4	0	0	0	0	0	0	0	0	0	0	0	0	0	N/A		2	5A	0
373	45	74	Transfer of MJUFA Utility Diversion - Section 5C - Conflict Schedule 5 C T/E/D.05 - Virgin Media	09/04/2009	16/04/09 30/04/09 17/05/09 08/07/09 28/08/09 03/09/09	25.1.201/IL/COH/1208/JO 25.1.201/IL/COH/2306 25.1.201/IL/COH/1355/AS 25.1.201/IL/COH/2692 25.1.201/IL/COH/1661/GMcG 25.1.201/IL/COH/3018 25.1.201/IL/COH/2181/GMcG 25.1.201/IL/COH/3415	1	1	1	1	I	1	3,4	0	3,961	0	0	0	3,961	0	293	693	4,948	3,269	1,679	0	0	VPS	2	5C	3,269
374a			Gogar Landfill Area - Additional site investigation and testing to landfill area	24/04/2009	25/09/09 20/10/09 04/11/09	25.1.201/IL/COH/2391 25.1.201/IL/COH/2477/AS 25.1.201/IL/MH/3845 25.1.201/IL/MH/3968					M	1	3,4	0	0	0	0	0	0	0	0	0	0	0	0	0	N/A		7	0	
374b			Gogar Landfill Area - Surcharging and monitoring of surcharge								M	1	3,4	U	U	U	U	U	U	U	U	U	U	U	U	U	N/A		7	U	
374c			Gogar Landfill Area - Soil Nailing and Reinforced Earth								M	1	3,4	U	U	U	U	U	U	U	U	U	U	U	U	U	N/A		7	U	

CEC00624424_0191

ETN INFRACO NOTIFICATION of the CHANGE (INTC) CONFIDENTIAL

Withdrawn/Superseded/no cost
Delay Only
Change Order issued

Table with columns: Ref, Reqs, tie Change Order, TCO, Description, Date Notified, Date of further letters, Letter Ref, Agreed in principle, TNC?, Estimate issued?, Change Order?, Type, Change Type, Pricing Method, Value Estimate (GBP), Allocation of Cost, Section, Change Order Value.

CEC00624424_0193

ETN INFRACO NOTIFICATION of the CHANGE (INTC)
CONFIDENTIAL



Ref	Intc Order ID	Description	Date Notified	Date of further letters	Letter Ref	Agreed in principle	TNC7	Estimate issued?	Change Order?	Type	Change Type	Pricing Method	Value Estimate (GBP)										Location		
													SDS	Edinger	Siemens	CAF	Sub-total	LH&P	Construction Problems	Other Problems	Local	F Agreed		F Not Agreed	Allocation of Cost
402		Addition of starter and capping layers in Section 5B	26/04/2009							M	1	1.2	U	1,362,967	ind	102,240	242,019	1,721,345	944,666	822,670	N/A		5B	U	
403		Addition of starter and capping layers in Section 5C	26/04/2009					1		M	1	1.2	U	716,786	ind	53,042	125,437	695,365	508,164	387,101	N/A		5C	0	
404		Section 5B - Drainage Ditches	07/05/2009					1		M	1	1.2	0	-4,469	0	-330	-781	-5,574	0	-5,574	N/A		5B	0	
405		Additional Retaining Wall at lower Bridge Pumping Station	11/05/2009					1		M	1	1.2	0	5,410	0	400	947	6,757	0	6,757	N/A		1A	0	
406		Signal Depot Earthworks - Northern Boundary Drainage Leaps	10/05/2009							M	1	1.2	0	0	0	0	0	0	0	0	N/A		6	0	
407	97	Hard miff with Gogur excavation	12/05/2009			1		1		M	1	1.2,3	0	30,148	30,145	2,231	5,276	40,670	36,807	4,863	N/A		6	35,807	
408		IFC Changes - Ductwork Specification	12/05/2009							M	1	3.4	U	U	U	U	U	U	U	U	N/A		AM	U	
409	70	Fourth Piers - New construction at Ocean Drive	12/05/2009			1		1		M	1	1.2,3	2,780	2,400	178	0	2,818	2,818	0	0	N/A		1A	2,818	
410		RESEIGNED FOR CLOTHWAY (CVI 535-004) IFC Drawing Changes - Trackform								M	1	1.2,3	0	0	0	0	0	0	0	0	0				
411	48	Depot Floor - P4 for a manual bogie trolley	16/05/2009							M	1	3.4	0	0	0	0	0	0	0	0	N/A		AM	0	
412	51	Provide local protection of sewer at Change 71194	26/05/2009			1		1		D	1	1.2,3	1,999	1,999	148	200	350	2,897	2,897	0	VPS	2	7	2,997	
413	107	Shrink soil along to embankments between Russell Road and Water of Leith	16/05/09			1		1		D	1	1.2,3	0	65,815	6,581	4,670	11,518	88,784	44,718	44,066	N/A		5A	44,718	

BTM INFRA CO NOTIFICATION OF THE CHANGE (INTC)
CONFIDENTIAL

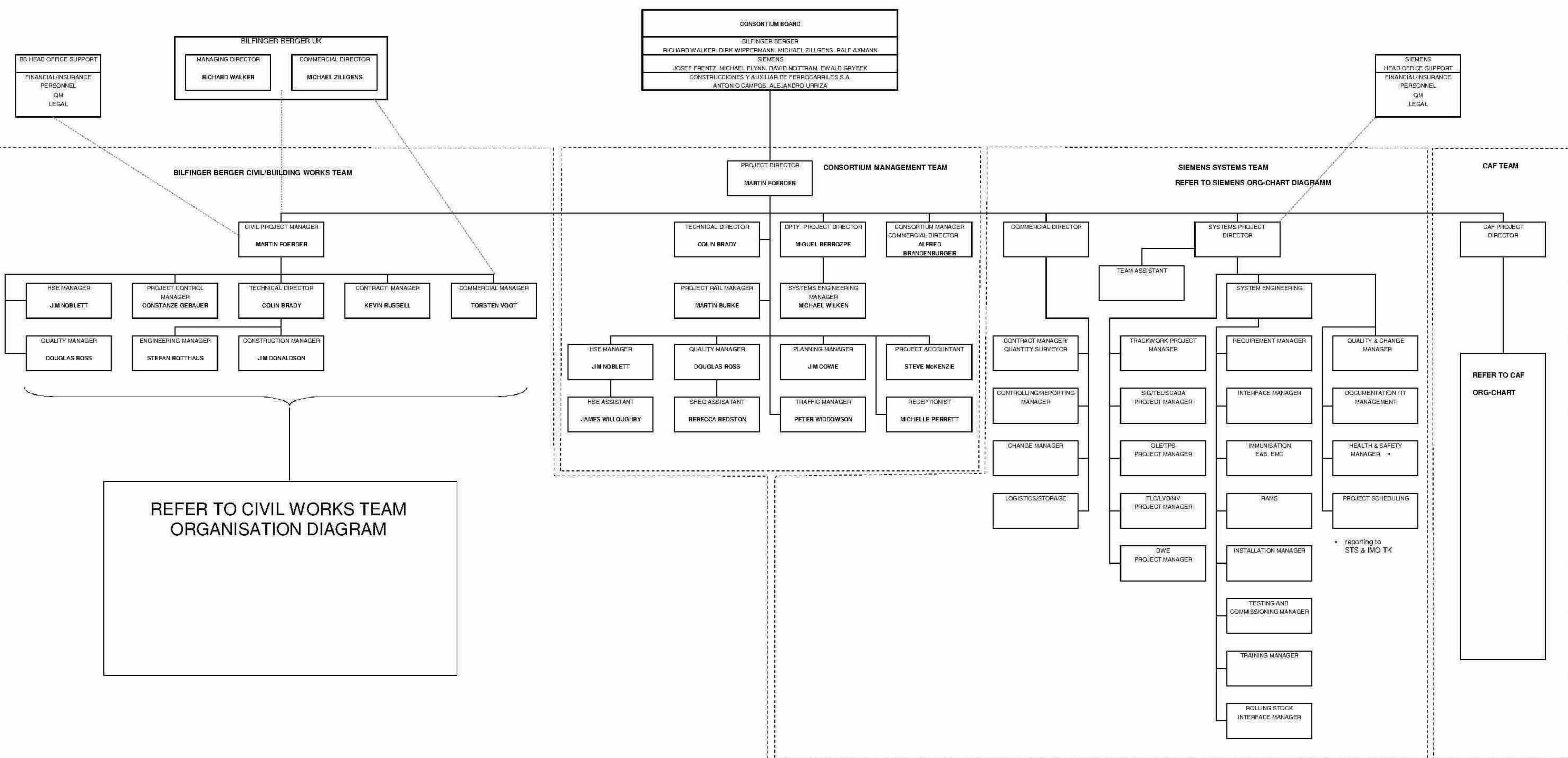


Ref	Title	Change Order TOC	Description	Date Notified	Date of further letters	Letter Ref	Agreed in principle	TNC7	Estimate Band? Y=N	Change Order? Y=N	Change Type	Change Notes	Pricing Method	Value Estimate (GBP)										Allocation of Cost	Section	Change Order Value				
														Sub-total	LH&P	Construction Materials	Other Materials	Total	£ Agreed	£ Not Agreed	Form or V/E	Number	See Notes							
438		35A	Noise & Vibration Surveys and Reports in the city centre (SILVACHS)	02/07/2009	21/07/09 23/07/09 31/07/09 08/08/09 15/08/09	ETM05011E1645/0650175 INF CORR 175/VA/01 INF CORR 184/0/0/0 INF CORR 184/0/0/0 INF CORR 240/0/0 INF CORR 240/0/0 INF CORR 240/0/0	1		1	1	U	146,128	U	146,128	U	0	0	0	0	0	0	0	0	0	0	146,128	1,2	146,128		
439		77	SDS proposed office move to Edinburgh Park - IT coss	07/07/2009	29/07/09	25.1.201/05C/0152	1		1	1	U	29,850	0	29,850	0	0	0	0	0	0	0	0	0	0	0	0	29,850	AI	29,850	
440			Utilities conflicts within 1.2 metre clearance zone	15/07/2009	21/07/09 24/07/09 24/08/09 24/08/09 31/08/09 19/09/09	25.1.201/05C/0055 25.1.201/05C/0055 25.1.201/05C/0055 25.1.201/05C/0055 25.1.201/05C/0055 25.1.201/05C/0055	M				U	0	U	0	U	0	0	0	0	0	0	0	0	0	0	0	0	0	0	0
441			Site W&B Contamination	05/08/2009	31/08/09 19/09/09 06/11/09	25.1.201/05C/0200 INF CORR 240/0/0/0 INF CORR 277/5/SS	M				U	0	0	0	0	0	0	0	0	0	0	0	0	0	0	0	0	0	0	
442			Track Drainage - Section 5A	27/07/2009	12/01/09	25.1.201/05C/0006	1		1	1	M	57,597	incl	4,252	10,079	71,939	0	0	0	0	0	0	0	0	0	0	0	0	0	
443			Notified Departure due to the issue of SDS design programme	17/07/2009		25.1.201/05C/0061			N/A		M	0	0	0	0	0	0	0	0	0	0	0	0	0	0	0	0	0		
444			Notified Departure due to the issue of SDS design programme	17/07/2009		25.1.201/05C/0063			N/A		M	0	0	0	0	0	0	0	0	0	0	0	0	0	0	0	0	0		
445			Reservoir Delta Junction Landscaping	30/07/2009	30/07/09 31/07/09 11/08/09 07/08/09 15/08/09	25.1.201/05C/0069 25.1.201/05C/0070 25.1.201/05C/0070 SDS-ULE90130-SW-LET-01703 25.1.201/05C/0070 25.1.201/05C/0070	M				U	0	0	0	0	0	0	0	0	0	0	0	0	0	0	0	0	0		
447			Revised MLE location due to Scottish Power installation - Prices Street at change 121395	20/07/2009	04/09/09	25.1.201/05C/0094			0		M	0	0	0	0	0	0	0	0	0	0	0	0	0	0	0	0	0		
448			Change to street lighting at Haymarket Terrace	20/07/2009	19/07/09	SDS-ULE90130-SW-LET-00110			0		M	0	0	0	0	0	0	0	0	0	0	0	0	0	0	0	0	0		
449	80		Restoration of Bus Link	20/07/2009	21/07/09 22/07/09 23/07/09 23/07/09 23/07/09 09/08/09	INF CORR 1811 INF CORR 1822/TC 25.1.201/05C/0128 INF CORR 1826/CH 25.1.201/05C/0128 INF CORR 233/AS	1		1	1	U	595	0	595	0	0	0	0	0	0	0	0	0	0	0	0	0	0		
450	57		B&A New Bumsala Road Alignment	20/07/2009	20/07/09 24/07/09 20/08/09 01/09/09 09/09/09 19/09/09 06/11/09	25.1.201/05C/0100 25.1.201/05C/0101 INF CORR 1844/0/0 25.1.201/05C/0326 25.1.201/05C/0326 SDS-ULE90130-SW-LET-00409 SDS-ULE90130-SW-LET-01753 25.1.201/05C/0104 INF CORR 277/5	1		1	1	U	6,819	0	6,819	0	0	0	0	0	0	0	0	0	0	0	0	0	0		
451			Stage Drawings for tram stops	05/08/2009	01/08/09 25/08/09 09/09/09 09/09/09 26/09/09 10/10/09	25.1.201/05C/0104 INF CORR 245/0/0/0 SDS-ULE90130-SW-LET-01746 25.1.201/05C/0742 SDS-ULE90130-SW-LET-01765 SDS-ULE90130-SW-LET-00128 INF CORR 277/5	1		1	1	U	47,463	0	47,463	0	0	0	0	0	0	0	0	0	0	0	0	0	0	0	
452			W&B Depot Entry&Exit tunnel	23/07/09	29/08/09	25.1.201/05C/0105			0		M	0	0	0	0	0	0	0	0	0	0	0	0	0	0	0	0	0		
453			ES Change to Guarded Busway	24/07/09	26/08/09	25.1.201/05C/0106			0		M	0	0	0	0	0	0	0	0	0	0	0	0	0	0	0	0	0		
454	56		Alteration of traffic management at Lothian Road Junction to accommodate M&C&A&E and Gas works	24/07/09	29/07/09 03/08/09 25/09/09 12/10/09	25.1.201/05C/0107 INF CORR 1889/DC 25.1.201/05C/0196 INF CORR 247/5/0/0 25.1.201/05C/0108	1		1	1	U	1,395	0	1,395	0	0	0	0	0	0	0	0	0	0	0	0	0	0	0	
455			Proposals for reusing Guard Highways at Edinburgh Park Central	22/07/09	17/11/09	25.1.201/05C/0109			N/A		1	0	0	0	0	0	0	0	0	0	0	0	0	0	0	0	0	0		
456			Reuse of existing kerbs	31/07/2009	31/08/09 19/09/09	25.1.201/05C/0110 INF CORR 240/0/0/0			0		M	0	0	0	0	0	0	0	0	0	0	0	0	0	0	0	0	0		
457			Edinburgh Park Bridge - revisions to reinforcement to joints	04/08/2009	19/09/09	25.1.201/05C/0111			0		M	0	0	0	0	0	0	0	0	0	0	0	0	0	0	0	0	0		
458			Revised Junction Layouts - Section 1A	10/08/2009	19/07/09	ETM05011E1645/0650175			0		M	0	0	0	0	0	0	0	0	0	0	0	0	0	0	0	0	0		
459			TRO changes - informal consultation	07/08/09	31/07/09 31/08/09 25/09/09 30/09/09	SDS-ULE90130-SW-LET-01645 25.1.201/05C/0112 INF CORR 245/0/0/0 INF CORR 245/0/0/0 25.1.201/05C/0113	M				U	0	0	0	0	0	0	0	0	0	0	0	0	0	0	0	0	0	0	
460			TRO changes - informal consultation - impact on IFC Drawing issue dates	07/08/09	25/09/09 25/09/09 30/09/09	SDS-ULE90130-SW-LET-01645 INF CORR 245/0/0/0 INF CORR 245/0/0/0	M				U	0	0	0	0	0	0	0	0	0	0	0	0	0	0	0	0	0	0	
461			Forth Piers Substation - reassign	11/08/09	09/08/09 30/09/09 01/10/09	SDS-ULE90130-SW-LET-01625 INF CORR 245/0/0/0 25.1.201/05C/0114	1				M	0	0	0	0	0	0	0	0	0	0	0	0	0	0	0	0	0		
462			Network Rail turning head lighting	11/08/09	06/07/09 05/08/09	INF CORR 177/AS SDS-ULE90130-SW-LET-01653 25.1.201/05C/0115	1				U	0	0	0	0	0	0	0	0	0	0	0	0	0	0	0	0	0		
463			Forth Piers drainage approval	11/08/09	06/08/09 25/09/09 30/09/09	SDS-ULE90130-SW-LET-01654 INF CORR 245/0/0/0 INF CORR 245/0/0/0	1				U	0	0	0	0	0	0	0	0	0	0	0	0	0	0	0	0	0		
464			Loganburn Retaining Walls W14 and W15 - Survey and bun migration	11/08/09	30/07/09 03/08/09 25/09/09	SDS-ULE90130-SW-LET-01654 INF CORR 245/0/0/0 25.1.201/05C/0116	M				U	0	0	0	0	0	0	0	0	0	0	0	0	0	0	0	0	0		
465			Redesign of Drainage at BA&C&C&C entrance	17/08/09	09/08/09 04/09/09 30/09/09 01/10/09 27/10/09	SDS-ULE90130-SW-LET-01655 INF CORR 245/0/0/0 25.1.201/05C/0117	M				U	0	0	0	0	0	0	0	0	0	0	0	0	0	0	0	0	0		
466			Changes to TRO 1 Drawings	17/08/09	09/08/09 31/08/09 14/09/09 15/09/09 22/09/09	SDS-ULE90130-SW-LET-01651 25.1.201/05C/0118 INF CORR 2518/0/0/0 INF CORR 240/0/0/0 25.1.201/05C/0119	M				U	0	0	0	0	0	0	0	0	0	0	0	0	0	0	0	0	0	0	
467			BA&A drainage at Depot	17/08/09	09/08/09 02/09/09 23/09/09	SDS-ULE90130-SW-LET-01654 INF CORR 2518/0/0/0 25.1.201/05C/0120	M				U	0	0	0	0	0	0	0	0	0	0	0	0	0	0	0	0	0	0	

ETN INFRA CO NOTIFICATION of the CHANGE (INTC) CONFIDENTIAL

Table with columns: Ref No, Description, Date Notified, Date of further letters, Letter Ref, Agreed in principle, TRC7, Estimate Band?, Change Order?, Type, Change Type, Pricing Method, SCS, Bilfinger, Siemens, U&EP, Construction Methods, Other Reasons, Total, E Not Agreed, E Agreed, E Not Agreed, Allocation of Cost, Section, Change Order Value, Location. Rows 483-510.

10.8 Organisation Charts



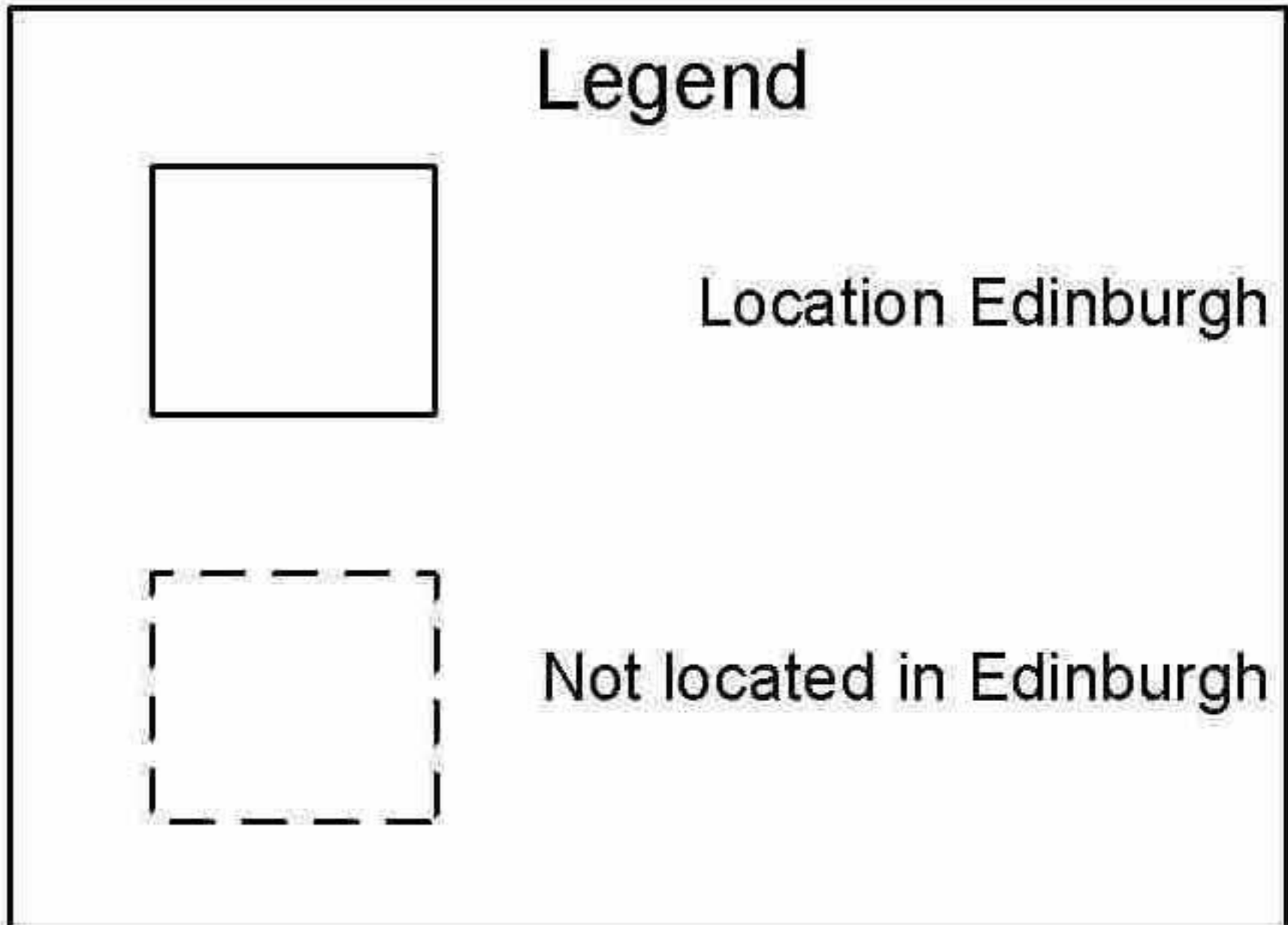
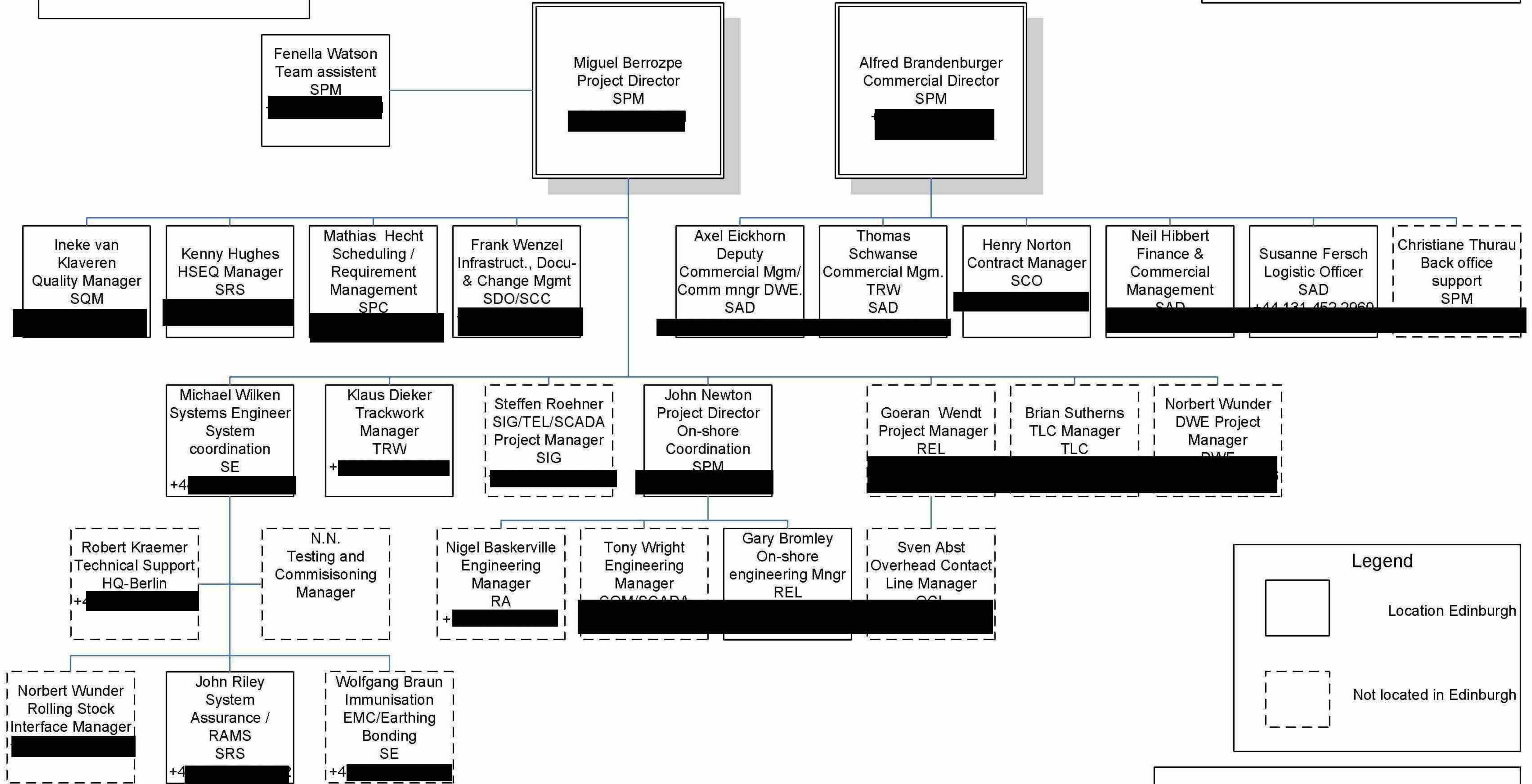
**EDINBURGH TRAM NETWORK
 INFRACO ORGANISATION CHART**
 REV22 01/11/2009

CEC00624424_0200

BSC Infraco Consortium Office
 9 Lochside Avenue
 Edinburgh
 EH12 9DJ

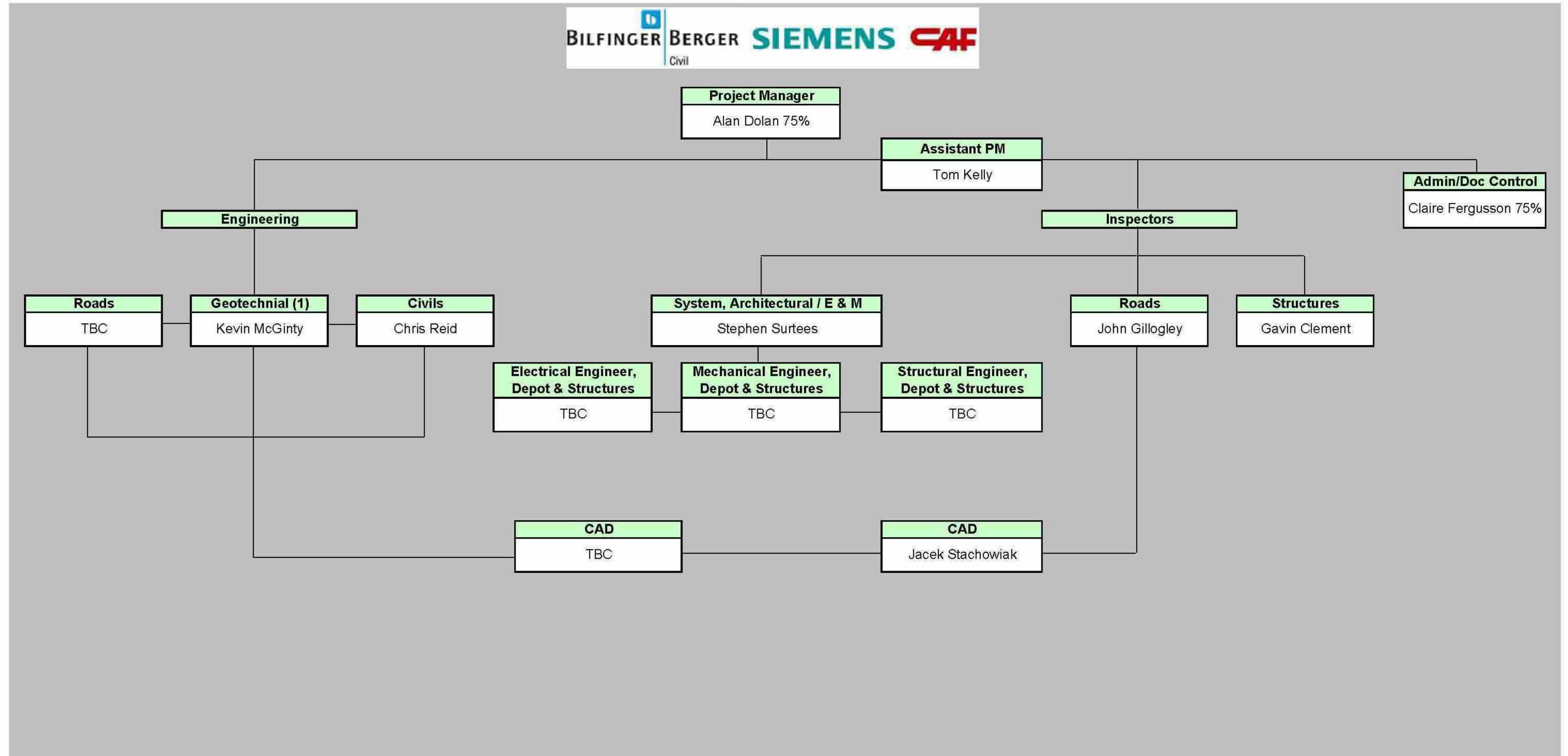
ETN – Edinburgh Tram Network

Working Chart
 Execution Phase
 SPM: Siemens Project Management
 ETN(SPM\$MG&ABB#050486
 Rev F 01.10.2009

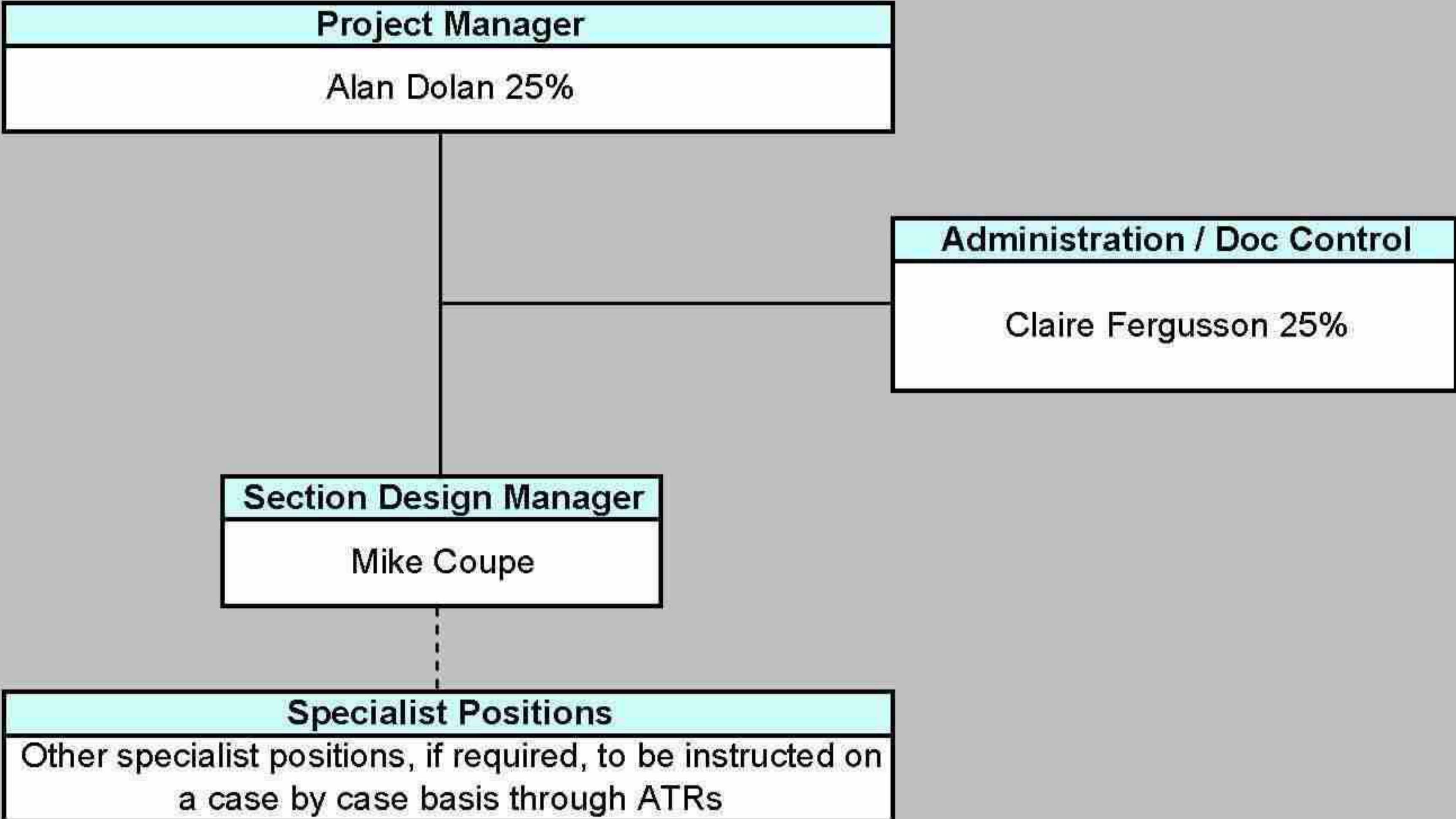


Approved: Berrozpe
 Checked: (Brandenburger, Frentz)
 Prepared: (van Klaveren)
 File: ETN(SPM\$MG&ABB#050486_F.vsd
 Valid as of: 01.10.2009

Extended Construction Support Services - For The Period 6th December 2009 up to 30th January 2010



CEC00624424_0203



10.9 Development Workshops

Misalignment Matrix

Version

21/11/2009

No.	Reference	Discipline	Item	Description / Scope of Work	Development Workshop	Date (scheduled)		Development Workshop Report and tie Instructions	
						BSC (SDS) Internal	confirmed date (tie)	current version issue date	completed
1	Appendix 4	Civils	Power	Power distribution equipment foundation design	Substations	11/06/2009	05/08/2009	29/09/2009	
2	Appendix 4	Civils	OLE	OLE support foundation design	OLE			11/03/2009	yes
3	Appendix 4	Civils	Bridges / Ret. Walls	Brief for any additional SI required	None at present	None known at present			
4	Appendix 4	OLE	OLE	Detailed design - catenary	OLE			11/03/2009	yes
5	Appendix 4	OLE	OLE	Detailed design - auto tensioned	OLE			11/03/2009	yes
6	Appendix 4	OLE	OLE	Building Fixing Report including design/approvals (excluding detailed wiring design and detailed building fixings locations)	OLE			11/03/2009	yes
7	Appendix 4	OLE	OLE	Pantograph interface and performance characteristics	OLE			11/03/2009	yes
8	Appendix 4	OLE	OLE	Typical cross sections and detailed cross sections	OLE			11/03/2009	yes
9	Appendix 4	OLE	OLE	Proposal for poles, wiring arrangements and the tensioning equipment	OLE			11/03/2009	yes
10	Appendix 4	OLE	OLE	Technical and performance specification for the OLE	OLE			11/03/2009	yes
11	Appendix 4	OLE	OLE	Proposal for equipment type and method of supporting the equipment along the route, including the wall fixings	OLE			11/03/2009	yes
12	Appendix 4	OLE	OLE	Detailed wiring layout design	OLE			11/03/2009	yes
13	Appendix 4	OLE	OLE	Detailed survey work including building location, height and condition; ground condition and pole location surveys	OLE			11/03/2009	yes
14	Appendix 4	OLE	OLE	Depot OLE Design	OLE			11/03/2009	yes
15	Appendix 4	OLE	OLE	Specify forces & moments for masts	OLE			11/03/2009	yes
16	Appendix 4	OLE	OLE	Mast foundations	OLE			11/03/2009	yes
17	Appendix 4	Power	Power Supplies	Substation external and Distribution design and approvals	Substations	11/06/2009	05/08/2009	29/09/2009	
18	Appendix 4	Power	Power Supplies	Substation internal and Distribution design and approvals	Substations	11/06/2009	05/08/2009	29/09/2009	
19	Appendix 4	Power	Power Supplies	Specify ducting requirements & mast to receive power supply	Radio Mast	31/03/2009	None known at present		
20	Appendix 4	Power	Power Supplies	Design ducting from substation to specified mast	Substations	11/06/2009	05/08/2009	29/09/2009	
21	Appendix 4	Power	Power Supplies	Substation Civil/Building design	Substations	11/06/2009	05/08/2009	29/09/2009	
22	Appendix 4	Power	Earthing and Bonding	Outline schematic cabling routing, earthing and bonding arrangements	Earthing + Bonding	10/06/2009	11/08/2009	14/10/2009	
23	Appendix 4	Power	Earthing and Bonding	Draft system earthing policy	Earthing + Bonding	10/06/2009	11/08/2009	14/10/2009	
24	Appendix 4	Power	Earthing and Bonding	Typical detail sketches of earthing and bonding solutions as required	Earthing + Bonding	10/06/2009	11/08/2009	14/10/2009	
25	Appendix 4	Power	Earthing and Bonding	Detail designs of earthing & bonding solutions as required	Earthing + Bonding	10/06/2009	11/08/2009	14/10/2009	
26	Appendix 4	Power	Earthing and Bonding	Selection of specific earthing & bonding components	Earthing + Bonding	10/06/2009	11/08/2009	14/10/2009	
27	Appendix 4	Power	Power Supplies	Determine traction power distribution equipment and principal component locations	TPS	Covered by Substation			
28	Appendix 4	Power	Power Supplies	Specification of traction power equipment and draft typical principal component locations	TPS	Covered by Substation			
29	Appendix 4	Power	Power Supplies	Relevant schematics and diagrams showing trackside traction equipment	OLE			11/03/2009	yes
30	Appendix 4	Power	Power Supplies	Review overhead line/cable make-up proposed	OLE			11/03/2009	yes
31	Appendix 4	Power	Power Supplies	Define overhead line/cable electrical make-up conductor and cable sections and cable materials	OLE			11/03/2009	yes
32	Appendix 4	Power	Power Supplies	Review traction supply substation positions proposed	Substations	11/06/2009	05/08/2009	29/09/2009	
33	Appendix 4	Power	Power Supplies	Define traction supply substation positions and rating	Substations	11/06/2009	05/08/2009	29/09/2009	
34	Appendix 4	Power	Power Supplies	Overhead line/cable make-up and traction supply substation positions input into Traction Power Study	TPS	Covered by OLE & Substation			
35	Appendix 4	Power	Power Supplies	Review results of traction power study. Revise make-up and traction supply substation positions and ratings as necessary	TPS	Covered by Substation			
36	Appendix 4	Power	Power Supplies	Track power feeding and sectioning diagrams for main lines and Depot	OLE			11/03/2009	yes
37	Appendix 4	Power	Power Supplies	Traction supply substation schematic drawings	Substations	11/06/2009	05/08/2009	29/09/2009	
38	Appendix 4	Power	Power Supplies	Feed track bed electrical stray current control requirements to track discipline	Earthing + Bonding	10/06/2009	11/08/2009	14/10/2009	
39	Appendix 4	Power	Power Supplies	Feed traction power distribution design information for the depot building and track system within the Depot complex, incorporating isolator interlocking with Depot plant and the items within the general scope above, to the Overhead Line Equipment and Depot disciplines	TPS	Covered by OLE, Depot & Substation			

No.	Reference	Discipline	Item	Description / Scope of Work	Development Workshop	Date (scheduled)		Development Workshop Report and tie Instructions	
						BSC (SDS) Internal	confirmed date (tie)	current version issue date	completed
40	Appendix 4	Power	Power Supplies	Work in conjunction with the Auxiliary Power discipline to specify the optimum method of supplying the Depot services power supply requirements, and feed into the appropriate Specifications	TPS	Covered by Depot & Substation			
41	Appendix 4	Power	Power Supplies	Traction power design report on overhead line/cable electrical make-up, traction supply substation positions, ratings, tram loadings, protection settings, load/fault discrimination, pantograph voltages and rail touch voltages	TPS	Covered by Substation			
42	Appendix 4	Power	Power Supplies	Draft traction supply substation equipment specification for traction supply substation procurement	Substations	11/06/2009	05/08/2009	29/09/2009	
43	Appendix 4	Power	Power Supplies	Feed overhead line/cable electrical make-up, including parallel support cabling,	OLE			11/03/2009	yes
44	Appendix 4	Power	Power Supplies	Feed traction power SCADA requirements to Systems and Communications discipline	TPS	Covered by Substation			
45	Appendix 4	Power	Power Supplies	Specify to Scottish Power the high and low voltage supply requirements as appropriate for traction, Depot services and substation building services	Substations	11/06/2009	05/08/2009	29/09/2009	
46	Appendix 4	Power	Switch heating	Switch heating specification	Points Heating	None known at present			
47	Appendix 4	Power	Permanent Way	Points heating	Points Heating	None known at present			
48	Appendix 4	Power	Power Supplies	Power distribution equipment foundation design	Substations	11/06/2009	05/08/2009	29/09/2009	
49	Appendix 4	Power	Power Supplies	Depot Substation and Distribution Design	Substations	11/06/2009	05/08/2009	29/09/2009	
50	Appendix 4	Supervisory, Control & Communications	Supervisory, Control & Communications	Define loop location	SCC		03/06/2009	24/09/2009 Draft	
51	Appendix 4	Tram Stops	Passenger Info	Provision for Passenger Information System	Tramstops	09/06/2009	04/08/2009	29/09/2009	
52	Appendix 4	Tram Stops	Passenger Info	Component selection Passenger Information System	Tramstops	09/06/2009	04/08/2009	29/09/2009	
53	Appendix 7, Part C	Accommodation Works		Design to be completed to IFC status, all design consents and approvals obtained and BBS will construct IFC Design	None at present	None known at present			
54	Appendix 7, Part C	Building (Depot)		Liaison on steelwork design for Depot Building may be required to allow BBS to comply with BAA requirements for notice period to lower crane jibs if BAA require use of the auxiliary runway. Any re-design is unlikely or minimal	None at present	None known at present			
55	Appendix 7, Part C	Drainage		Design to be completed to IFC status, all design consents and approvals obtained and BBS will construct IFC Design	Drainage	25/06/2009	25/08/2009	14/10/2009	
56	Appendix 7, Part C	Drainage		Requirements for maximising use of and connection to existing drainage network to be confirmed.	Drainage	25/06/2009	25/08/2009	14/10/2009	
57	Appendix 7, Part C	Earthworks		Design to be completed to IFC status, all design consents and approvals obtained and BBS will construct IFC Design	None at present	None known at present			
58	Appendix 7, Part C	Earthworks		Requirements for excavation and filling below Earthworks Outline to be designed and specified and assessment of anticipated formation conditions	Trackform			11/03/2009	yes
59	Appendix 7, Part C	Earthworks			Trackform			11/03/2009	yes
60	Appendix 7, Part C	Earthworks		Formation requirements to be confirmed.	Trackform			11/03/2009	yes
61	Appendix 7, Part C	Earthworks		Requirements for excavation and disposal of contaminated material and refilling of void, to be designed and specified.	None at present	None known at present			
62	Appendix 7, Part C	Earthworks		Special geotechnical measures, e.g. embankment slope steepening (by selection of fill type, re-enforced earth) cut slope steepening (by slope drains, buttresses, soft nails) soft ground treatment (by surcharging/consolidation, load transfer platforms) to be designed and specified.	None at present	None known at present			
63	Appendix 7, Part C	Earthworks		Design special Geotechnical measures for Gogar Landfill Site. Solution to be developed.	None at present	None known at present			
64	Appendix 7, Part C	Geometry, Horizontal Alignment		Design to be completed to IFC status, all design consents and approvals obtained and BBS will construct IFC design	Vertical and Horizontal Alignment	None known at present			
65	Appendix 7, Part C	Geometry, Horizontal Alignment		Confirmation required that alignment is compatible with CAF Tram DKE and LOD.	Vertical and Horizontal Alignment	DKE Workshop possible			
66	Appendix 7, Part C	Landscaping		Design to be completed to IFC status, all design consents and approvals obtained and BBS will construct IFC design	None at present	None known at present			

No.	Reference	Discipline	Item	Description / Scope of Work	Development Workshop	Date (scheduled)		Development Workshop Report and tie Instructions	
						BSC (SDS) Internal	confirmed date (tie)	current version issue date	completed
67	Appendix 7, Part C	OLE Foundations		Design to be completed to IFC status, all design consents and approvals obtained and BBS will construct IFC Design	OLE			11/03/2009	yes
68	Appendix 7, Part C	Roads		Design to be completed to IFC status, all design consents and approvals obtained and BBS will construct IFC Design	Roads			27/02/2008	yes
69	Appendix 7, Part C	Roads		Subject to survey, pavement design to be developed and finalised to minimise work scope	Roads			27/02/2008	yes
70	Appendix 7, Part C	Roads		Further pavement surveys and assessments are required.	Roads			27/02/2008	yes
71	Appendix 7, Part C	Site Clearance		Design to be completed to IFC status, all design consents and approvals obtained and BBS will construct IFC design	None at present	None known at present			
72	Appendix 7, Part C	Site Clearance		Design to be completed to IFC status, all design consents and approvals obtained.	None at present	None known at present			
73	Appendix 7, Part C	Sub-station Buildings		Design to be completed to IFC status, all design consents and approvals obtained and BBS will construct IFC Design	Substations	11/06/2009	05/08/2009	29/09/2009	
74	Appendix 7, Part C	Systems and Power Cable Ducts		Design to be completed to IFC status, all design consents and approvals obtained and BBS will construct IFC Design	System and Power-cable ducts	24/06/2009	Covered by Substation & Tramstop		
75	Appendix 7, Part C	Trackform		Design to be completed to IFC status, all design consents and approvals obtained	Trackform			11/03/2009	yes
76	Appendix 7, Part C	Trackform		Cross sections required to reflect BBS's selected track system, including minimum track construction depths (top of rail to formation) with corresponding formation condition requirements	Trackform			11/03/2009	yes
77	Appendix 7, Part C	Trackform		Cross sections required to reflect BBS's selected track system, including minimum track construction depths (top of rail to formation) with corresponding formation condition requirements	Trackform			11/03/2009	yes
78	Appendix 7, Part C	Tramstops		Design to be completed to IFC status, all design consents and approvals obtained and BBS will construct IFC Design	Tramstops	09/06/2009	04/08/2009	29/09/2009	
79	Appendix 7, Part C	Vertical Alignment		Design to be completed to IFC status, all design consents and approvals obtained and BBS will construct IFC Design	Vertical and Horizontal Alignment	None known at present			
80	Appendix 7, Part C	Vertical Alignment		Revise alignment, where possible and where Programme permits for on street section to minimise Roads work-scope	Roads			27/02/2009	yes
81	Appendix 7, Part C	Vertical Alignment		Revise alignment, where possible and where Programme permits to minimise Roads work-scope	Roads			27/02/2009	yes
82	Appendix 7, Part C	Vertical Alignment		Revised alignment required to facilitate direct fixing of rails to structures and guideway.	Vertical and Horizontal Alignment	None known at present			
83	Appendix 7, Part C	Vertical Alignment		Revised alignment required to facilitate direct fixing of rails to structures	Vertical and Horizontal Alignment	None known at present			
84	Appendix 7, Part C	W1 Lindsay Road		Design to be completed to IFC Status, all design consents and approvals obtained and BBS will construct IFC Design	None at present	None known at present			
85	Appendix 7, Part C	S16 Victoria Dock Entrance		Design to be completed to IFC Status, all design consents and approvals obtained and BBS will construct IFC Design	Vertical and Horizontal Alignment	None known at present			
86	Appendix 7, Part C	S17 Tower Place		Design to be completed to IFC Status, all design consents and approvals obtained and BBS will construct IFC Design	Vertical and Horizontal Alignment	None known at present			
87	Appendix 7, Part C	S18 Leith Walk Railway		Design to be completed to IFC Status, all design consents and approvals obtained and BBS will construct IFC Design	Vertical and Horizontal Alignment	None known at present			

Bilfinger Berger – Siemens – CAF Consortium

10.10 Issues and Concerns

Not Applicable