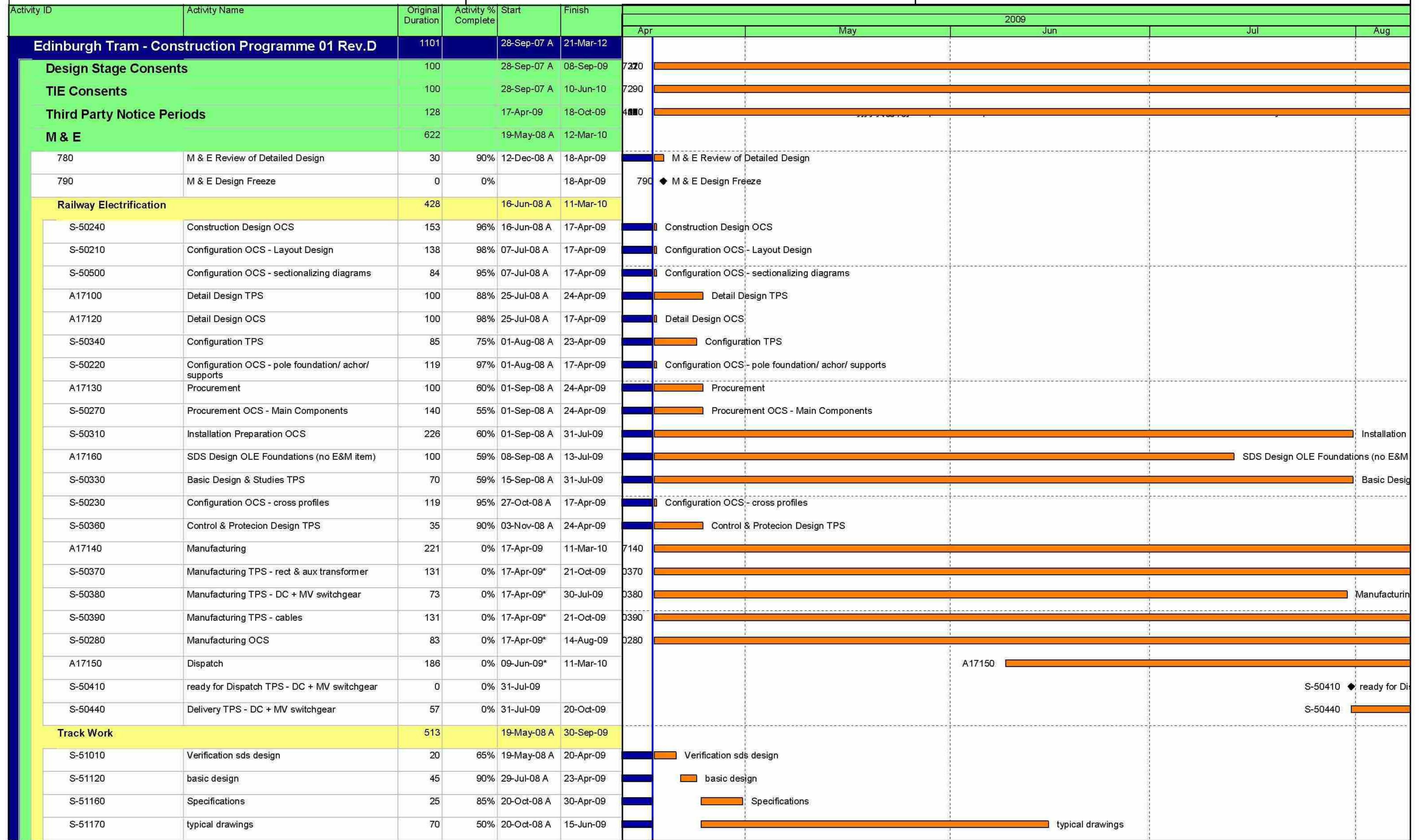


Three Month Look Ahead Programme

April 2009 - July 2009

EDINBURGH TRAM NETWORK



Date	Revision	Chec...	Approved
17-Apr-09	Construction Programme Updated V43 & Progress	JAC	

■ Actual Work ◆ Milestone
■ Normal ■ % Complete

CEC00971600_0097

Three Month Look Ahead Programme

April 2009 - July 2009

EDINBURGH TRAM NETWORK



Activity ID	Activity Name	Original Duration	Activity % Complete	Start	Finish	2009				
						Apr	May	Jun	Jul	Aug
S-51130	detailed Design	250	30%	20-Oct-08 A	30-Sep-09					
S-51100	Documentation	20	70%	24-Oct-08 A	13-May-09	Documentation				
Rail Automation		249		11-Sep-08 A	19-Oct-09					
S-54440	procurement & transport TPDS	120	50%	11-Sep-08 A	24-Sep-09					
S-52930	detailed design radio system	45	100%	13-Oct-08 A	03-Apr-09 A	detailed design radio system				
S-53620	detailed design PABX	36	100%	13-Oct-08 A	08-Apr-09 A	detailed design PABX				
S-54400	procurement & transport E&M cubicles	210	50%	03-Nov-08 A	09-Oct-09					
S-54420	procurement & transport fibre optic	120	45%	03-Nov-08 A	07-Sep-09					
S-54430	procurement & transport PABX	120	45%	10-Nov-08 A	19-Oct-09					
S-54450	procurement & transport UPS	120	60%	10-Nov-08 A	24-Jul-09	procurement & transp				
S-54410	procurement & transport radio system	218	40%	24-Nov-08 A	14-Oct-09					
Workshop Equipment		381		19-Sep-08 A	12-Mar-10					
S-53000	detail design DWE	70	75%	19-Sep-08 A	15-May-09	detail design DWE				
S-53310	ordering DWE	170	25%	20-Oct-08 A	02-Jul-09	ordering DWE				
S-53010	Approval detail design DWE	129	5%	24-Oct-08 A	10-Jul-09	Approval detail design DWE				
S-53220	manufacture DWE	242	8.26%	09-Mar-09 A	12-Mar-10					
SECTION 01 NEWHAVEN ROAD TO HAYMARKET		1101		28-Sep-07 A	21-Mar-12					
1	SECTION 01 NEWHAVEN ROAD TO HAYMARKET	1638	34.69%	28-Sep-07 A	21-Mar-12					
01A Newhaven Road (inc.) to Foot of the Walk (exc.)		1089		28-Sep-07 A	05-Mar-12					
3	01A Newhaven Road (inc.) to Foot of the Walk (exc.)	1622	35.02%	28-Sep-07 A	05-Mar-12					
Design Stage Consents		100		28-Sep-07 A	01-May-09					
A17260	Forth Ports Agreement	100	95%	28-Sep-07 A	01-May-09	Forth Ports Agreement				
MUDFA & Utilities Completion Dates		0		17-Apr-09	17-Apr-09					
180	MUDFA & Utilities - Area 1 completion	0	0%	17-Apr-09*		180 ◆ MUDFA & Utilities - Area 1 completion				
290-20	MUDFA & Utilities - Duke Street Junction	0	0%	17-Apr-09*		20-20 ◆ MUDFA & Utilities - Duke Street Junction				
320-21/22	MUDFA & Utilities - Duke Street Junction to Tower Street	0	0%	17-Apr-09*		21/22 ◆ MUDFA & Utilities - Duke Street Junction to Tower Street				
330-23	MUDFA & Utilities - Rennies Isle Bridge to Tower Place Roundabout	0	0%	17-Apr-09*		20-23 ◆ MUDFA & Utilities - Rennies Isle Bridge to Tower Place Roundabout				
340-23	MUDFA & Utilities - Ocean Terminal to Rennies Isle Bridge	0	0%	17-Apr-09*		20-23 ◆ MUDFA & Utilities - Ocean Terminal to Rennies Isle Bridge				
350-24	MUDFA & Utilities - Newhaven Roundabout to Ocean Terminal	0	0%	17-Apr-09*		20-24 ◆ MUDFA & Utilities - Newhaven Roundabout to Ocean Terminal				
360-20	Manderson Street Switch	0	0%	17-Apr-09*		20-20 ◆ Manderson Street Switch				
Newhaven Road (inc.) to Ocean Terminal (exc.)		750		08-Oct-08 A	18-Oct-11					
4	Newhaven Road (inc.) to Ocean Terminal (exc.)	1112	17.81%	08-Oct-08 A	18-Oct-11					
Design		21		17-Apr-09	18-May-09					
B01000	Scottish Water - Outfall Consent	0	0%		17-Apr-09*	1000 ◆ Scottish Water - Outfall Consent				
11970	Issue Construction Drawings - Roadwork	0	0%		18-May-09*	11970 ◆ Issue Construction Drawings - Roadwork				

Date	Revision	Chec...	Approved
17-Apr-09	Construction Programme Updated V43 & Progress	JAC	

Actual Work ◆ Milestone
 Normal % Complete

CEC00971600_0098

Three Month Look Ahead Programme

April 2009 - July 2009

EDINBURGH TRAM NETWORK



Activity ID	Activity Name	Original Duration	Activity % Complete	Start	Finish	2009					
						Apr	May	Jun	Jul	Aug	
11980	Issue Construction Drawings - Trackwork	0	0%		18-May-09*		11980 ♦ Issue Construction Drawings - Trackwork				
B01100	Lindsay Rd RW1 Ch.100-170 - Change - CEC comment	0	0%		18-May-09		B01100 ♦ Lindsay Rd RW1 Ch.100-170 - Change - CEC comment				
Lindsay Road Retaining Walls (W1)		141		17-Apr-09	04-Nov-09						
WBSSum001	Lindsay Road Retaining Walls (W1) (WBS Summary)	202	0%	17-Apr-09	04-Nov-09	1001					
Wall A Construction		90		17-Apr-09	25-Aug-09						
12330	Permanent Diversion of Services (by Others)	40	0%	17-Apr-09	15-Jun-09	2330				Permanent Diversion of Services (by Others)	
A1710	Wall A	50	0%	16-Jun-09*	25-Aug-09			A1710			
Wall B Construction		100		17-Jun-09	04-Nov-09						
5	Wall B	100	0%	17-Jun-09	04-Nov-09			5			
Roadwork		203		17-Jun-09	14-Apr-10						
A1110	CH 0700 to 0850	203	0%	17-Jun-09	14-Apr-10			A1110			
Ocean Terminal (inc.) to Port of Leith (exc.)		776		11-Nov-08 A	20-Feb-12						
9	Ocean Terminal (inc.) to Ocean Drive (exc.)	1165	12.54%	11-Nov-08 A	20-Feb-12						
Design		0		08-May-09	08-May-09						
B01010	Scottish Water - Outfall Consent	0	0%		08-May-09*		B01010 ♦ Scottish Water - Outfall Consent				
Tower Place Bridge (S17)		337		19-May-09	24-Sep-10						
A20040	Agreement of Change	20	0%	03-Jun-09	30-Jun-09*			A20040		Agreement of Change	
Services		40		19-May-09	14-Jul-09						
A16050	Temporary Diversion of Services (by others)	40	0%	19-May-09	14-Jul-09			A16050		Temporary Diversion of Services (by others)	
S17 Works		307		01-Jul-09	24-Sep-10						
A16060	Temporary Platforms and Demolition	60	0%	01-Jul-09*	23-Sep-09				A16060		
WBSSum003	Tower Place Bridge (S17) (WBS Summary)	451	0%	01-Jul-09	24-Sep-10				WBSSum003		
Port of Leith (inc.) to Bernard Street (exc.)		519		03-Feb-09 A	27-May-11						
15	Ocean Drive (inc.) to Constitution Street (exc.)	770	0%	03-Feb-09 A	27-May-11						
Design		0		17-Apr-09	17-Apr-09						
B01020	Scottish Water - Outfall Consent	0	0%		17-Apr-09*		B01020 ♦ Scottish Water - Outfall Consent				
Bernard Street (inc.) to Foot of the Walk (exc.)		689		03-Feb-09 A	08-Feb-12						
18	Constitution Street (inc.) to Foot of the Walk (exc.)	1027	0%	03-Feb-09 A	08-Feb-12						
Design		0		17-Apr-09	17-Apr-09						
B01030	Scottish Water - Outfall Consent	0	0%		17-Apr-09*		B01030 ♦ Scottish Water - Outfall Consent				
01B Foot of the Walk (inc.) to McDonald Road (exc.)		827		01-Oct-08 A	22-Nov-11						
21	01B Foot of the Walk (inc.) to McDonald Road (exc.)	1222	22.27%	01-Oct-08 A	22-Nov-11						
A20050	Agreement of Change (Trackform)	40	0%	17-Apr-09	15-Jun-09*	0050			A20050	Agreement of Change (Trackform)	
MUDFA & Utilities Completion Dates		0		31-Jul-09	31-Jul-09						
430-20	MUDFA & Utilities - Balfour Street to Foot of the Walk	0	0%		31-Jul-09*					430-20 ♦ MUDFA & U	

Date	Revision	Chec...	Approved
17-Apr-09	Construction Programme Updated V43 & Progress	JAC	

█ Actual Work ◆ Milestone
█ Normal █ % Complete

CEC00971600_0099

Three Month Look Ahead Programme

April 2009 - July 2009

EDINBURGH TRAM NETWORK



Activity ID	Activity Name	Original Duration	Activity % Complete	Start	Finish	2009					
						Apr	May	Jun	Jul	Aug	
Foot of the walk (inc.) to Balfour Street (exc.)											
22	Foot of the walk (inc.) to Balfour Street (exc.)	727	18.54%	01-Oct-08 A	13-Sep-11	[Gantt bar showing progress from Oct 2008 to Sep 2011]					
Design											
B01270	Works in Leith Walk suspended until access issues resolved	1	0%	10-Mar-09 A	31-Aug-09	[Gantt bar showing progress from Mar 2009 to Aug 2009]					
Roadwork											
Leith Walk Ch.100-350											
Northbound											
A12390	Construct Kerb lines	12	95%	30-Oct-08 A	01-Sep-09	[Gantt bar showing progress from Oct 2008 to Sep 2009]					
B25030	Footpath Works	12	95%	17-Nov-08 A	02-Sep-09	[Gantt bar showing progress from Nov 2008 to Sep 2009]					
A12400	Reset Gullies & Inspection Chambers	5	100%	17-Nov-08 A	01-Sep-09	[Gantt bar showing progress from Nov 2008 to Sep 2009]					
A12420	Surface New Carriageway	5	15%	01-Dec-08 A	07-Sep-09	[Gantt bar showing progress from Dec 2008 to Sep 2009]					
Balfour Street (inc.) to McDonald Road (exc.)											
25	Balfour Street (inc.) to McDonald Road (exc.)	799	45.91%	06-Feb-09 A	13-Oct-11	[Gantt bar showing progress from Feb 2009 to Oct 2011]					
01C McDonald Road (inc.) to Princess Street West (exc.)											
29	01C McDonald Road (inc.) to Princess Street West (exc.)	872	17.52%	06-Feb-09 A	21-Mar-12	[Gantt bar showing progress from Feb 2009 to Mar 2012]					
A20080	Agreement of Change (Trackform)	1297	0%	17-Apr-09	15-Jun-09*	0080	[Gantt bar showing progress from Apr 2009 to Jun 2009]				Agreement of Change (Trackform)
MUDFA & Utilities Completion Dates											
200	MUDFA & Utilities - Sub-Section 1C	0	0%	17-Apr-09*		200	[Gantt bar showing progress from Apr 2009]				MUDFA & Utilities - Sub-Section 1C
370-17	MUDFA & Utilities - Picardy Place	0	0%	17-Apr-09*		0-17	[Gantt bar showing progress from Apr 2009]				MUDFA & Utilities - Picardy Place
520	MUDFA & Utilities - BT Works Top Section of Leith Walk	0	0%	17-Apr-09*		520	[Gantt bar showing progress from Apr 2009]				MUDFA & Utilities - BT Works Top Section of Leith Walk
400-18	MUDFA & Utilities - BT Works London Road to Greenside Road	0	100%	17-Apr-09 A		0-18	[Gantt bar showing progress from Apr 2009]				MUDFA & Utilities - BT Works London Road to Greenside Road
410-17	MUDFA & Utilities - BT Works Broughton Street to York Lane	0	0%	17-Apr-09*		0-17	[Gantt bar showing progress from Apr 2009]				MUDFA & Utilities - BT Works Broughton Street to York Lane
440-18	MUDFA & Utilities - McDonald Road to Union Place	0	0%	17-Apr-09*		0-18	[Gantt bar showing progress from Apr 2009]				MUDFA & Utilities - McDonald Road to Union Place
450-17/18	MUDFA & Utilities - Union Place to Picardy Place	0	0%	17-Apr-09*		7/18	[Gantt bar showing progress from Apr 2009]				MUDFA & Utilities - Union Place to Picardy Place
460-17	MUDFA & Utilities - York Place to Picardy Place	0	0%	17-Apr-09*		0-17	[Gantt bar showing progress from Apr 2009]				MUDFA & Utilities - York Place to Picardy Place
470-15	MUDFA & Utilities - The Mound	0	0%	17-Apr-09*	17-Apr-09	0-15	[Gantt bar showing progress from Apr 2009]				MUDFA & Utilities - The Mound
480-16/17	MUDFA & Utilities - South St Andrews Street to York Place	0	0%	17-Apr-09*	17-Apr-09	6/17	[Gantt bar showing progress from Apr 2009]				MUDFA & Utilities - South St Andrews Street to York Place
-16	MUDFA & Utilities - BT Works St Andrews Square	0	0%	17-Apr-09*		-16	[Gantt bar showing progress from Apr 2009]				MUDFA & Utilities - BT Works St Andrews Square
500-15	MUDFA & Utilities - The Mound to The Mound	0	0%	17-Apr-09*		0-15	[Gantt bar showing progress from Apr 2009]				MUDFA & Utilities - The Mound to The Mound
510-15	MUDFA & Utilities - The Mound to Castle Street	0	0%	17-Apr-09*		0-15	[Gantt bar showing progress from Apr 2009]				MUDFA & Utilities - The Mound to Castle Street
520-15/16	MUDFA & Utilities - The Mound to South St Andrews Street	0	0%	17-Apr-09*	17-Apr-09	5/16	[Gantt bar showing progress from Apr 2009]				MUDFA & Utilities - The Mound to South St Andrews Street
530-16	MUDFA & Utilities - St Andrews Square (BT)	0	0%	17-Apr-09*		0-16	[Gantt bar showing progress from Apr 2009]				MUDFA & Utilities - St Andrews Square (BT)
540-16/17	MUDFA & Utilities - York Place to Princes Street	0	0%	17-Apr-09*		6/17	[Gantt bar showing progress from Apr 2009]				MUDFA & Utilities - York Place to Princes Street
670	MUDFA & Utilities - BT Works	0	0%	17-Apr-09*		670	[Gantt bar showing progress from Apr 2009]				MUDFA & Utilities - BT Works
McDonald Road (inc.) to Picardy Place (exc.)											

Date	Revision	Chec...	Approved
17-Apr-09	Construction Programme Updated V43 & Progress	JAC	

■ Actual Work ◆ Milestone
■ Normal ■ % Complete

CEC00971600_0100

Three Month Look Ahead Programme

April 2009 - July 2009

EDINBURGH TRAM NETWORK



Activity ID	Activity Name	Original Duration	Activity % Complete	Start	Finish	2009				
						Apr	May	Jun	Jul	Aug
30	McDonald Road (inc.) to Picardy Place (exc.)	1138	21.54%	06-Feb-09 A	14-Oct-11					
Design										
12190	Issue Construction Drawings - Trackwork	0	0%	05-May-09	05-May-09*					
12200	Issue Construction Drawings - Roadwork	0	0%		05-May-09*					
Picardy Place (inc.) to St. Andrews Square (exc.)										
33	Picardy Place (inc.) to St. Andrews Square (exc.)	1139	6.32%	06-Feb-09 A	21-Mar-12					
Design										
12220	Issue Construction Drawings - Picardy Place Tramstop	0	0%	20-Apr-09	20-Apr-09*					
St. Andrews Square (inc.) to Princes Street West (exc.)										
46	St. Andrews Square (inc.) to Princess Street West (exc.)	1139	29.07%	06-Feb-09 A	21-Mar-12					
01D Princes Street (inc.) to Haymarket (exc.)										
39	01D Princess Street (inc.) to Haymarket (exc.)	1034	13.55%	24-Nov-08 A	27-Sep-11					
A20070	Agreement of Change (Haymarket)	20	0%	17-Apr-09	15-May-09*					
MUDFA & Utilities Completion Dates										
650	MUDFA & Utilities - Castle Street East to Castle Street West	0	0%	17-Apr-09*						
580-15	MUDFA & Utilities - BT Works Lothian Road Junction	0	0%	17-Apr-09*						
B01171	Haymarket / Manor Place - Anticipated MUDFA Completion	0	0%	08-Jun-09*						
210	MUDFA & Utilities - Sub-Section 1D	0	0%	09-Jun-09*						
560-14	MUDFA & Utilities - Manor Place Junction to Shandwick Place East	0	0%	09-Jun-09*						
570-14	MUDFA & Utilities - Haymarket Street to Manor Place Junction	0	0%	09-Jun-09*						
590-14	MUDFA & Utilities - BT Works Shandwick Place to Palmerston Place	0	0%	09-Jun-09*						
600-14	MUDFA & Utilities - Palmerston Street to Haymarket	0	0%	09-Jun-09*						
610-14	MUDFA & Utilities - Manor Place Junction to Shandwick Place East	0	0%	09-Jun-09*						
620-14	MUDFA & Utilities - Haymarket Station to Manor Place Junction	0	0%	09-Jun-09*						
Princes Street West (inc.) to Shandwick Place (exc.)										
40	Princes Street West (inc.) to Shadwick Place (exc.)	785	17.33%	24-Nov-08 A	25-Jan-11					
Roadwork										
Princes Street Ch 380-0,1980-1360										
West Section Eastbound Side										
A13850	Trackworks (576+432)	105	7%	23-Mar-09 A	08-Oct-09					
West Section Westbound Side										
A20250	Trackworks (144)	147	0%	17-Apr-09*	20-Jan-10					
Lothian Road Junction Ch 380-280										
Eastbound Side Ch.380-280										
A8250	Establish Traffic Management & Temp. Fencing	3	0%	09-Jun-09*	11-Jun-09					

Date	Revision	Chec...	Approved
17-Apr-09	Construction Programme Updated V43 & Progress	JAC	

█ Actual Work ◆ Milestone
█ Normal █ % Complete

CEC00971600_0101

Three Month Look Ahead Programme

April 2009 - July 2009

EDINBURGH TRAM NETWORK



Activity ID	Activity Name	Original Duration	Activity % Complete	Start	Finish	2009				
						Apr	May	Jun	Jul	Aug
A20320	Trackworks (108)	94	0%	12-Jun-09*	25-Nov-09			A20320		
	Trackwork (710m)	3		29-Jun-09	02-Jul-09					
	Lothian Road Junction Ch 440-280	3		29-Jun-09	02-Jul-09					
	Phase 2	3		29-Jun-09	02-Jul-09					
	1st half	3		29-Jun-09	02-Jul-09					
1D-15B-TRC	Set Track Demob 5B / Remob 1D	3	0%	29-Jun-09	02-Jul-09			1D-15B-TRCK-69		Set Track Demob 5B / Remob 1D
	Shandwick Place (inc.) to Haymarket (exc.)	694		02-Dec-08 A	27-Sep-11					
43	Shadwick Place (inc.) to Haymarket (exc.)	1034	21.37%	02-Dec-08 A	27-Sep-11					
	Roadwork	45		06-Jul-09	08-Sep-09					
	Haymarket Ch 1250-1125	45		06-Jul-09	08-Sep-09					
	Phase 1	17		06-Jul-09	29-Jul-09					
A6390	Establish Traffic Management & Temp. Fencing	2	0%	06-Jul-09*	08-Jul-09					A6390 Establish Traffic Management & Temp. Fencing
A6400	Remove island surfacing and exc. to formation	4	0%	08-Jul-09	14-Jul-09					A6400 Remove island surfacing and exc. to fo
A6410	Construct Kerb lines	2	0%	14-Jul-09	16-Jul-09					A6410 Construct Kerb lines
A6420	Move Gullies	2	0%	16-Jul-09	20-Jul-09					A6420 Move Gullies
A6450	Pavement Works	5	0%	16-Jul-09	23-Jul-09					A6450 Pavement Works
A6470	Street Lighting / Traffic Signals / Road Signs	5	0%	16-Jul-09	23-Jul-09					A6470 Street Lighting / Traffic S
A6430	Sub base	2	0%	20-Jul-09	22-Jul-09					A6430 Sub base
A6440	Roadbase/base course/wearing course/temp ramps	3	0%	22-Jul-09	27-Jul-09					A6440 Roadbase/base co
A6460	White Lines	1	0%	27-Jul-09	28-Jul-09					A6460 White Lines
A6475	Remove fencing and Traffic Management	1	0%	28-Jul-09	29-Jul-09					A6475 Remove fencin
	Phase 2	28		29-Jul-09	08-Sep-09					
A6480	Establish Traffic Management & Temp. Fencing	2	0%	29-Jul-09	31-Jul-09					A6480 Establish Tr
A6490	Excavate for new channel and kerb line / remove existing kerbs	2	0%	31-Jul-09	08-Sep-09					A6490
	SECTION 2 HAYMARKET CORRIDOR	734		31-Mar-08 A	23-Mar-11					
56	SECTION 2 HAYMARKET CORRIDOR	1087	35.07%	31-Mar-08 A	23-Mar-11					
	02A Haymarket Corridor	734		31-Mar-08 A	23-Mar-11					
48	02A Haymarket Corridor	1087	35.07%	31-Mar-08 A	23-Mar-11					
	MUDFA & Utilities Completion Dates	0		17-Apr-09	17-Apr-09					
190	MUDFA & Utilities - Area 2 completion	0	0%	17-Apr-09*						190 MUDFA & Utilities - Area 2 completion
630-13	MUDFA & Utilities - Haymarket Yard Entrance	0	0%	17-Apr-09*						630-13 MUDFA & Utilities - Haymarket Yard Entrance
640-13	MUDFA & Utilities - Haymarket Yard Entrance to Haymarket Yard Lower	0	0%	17-Apr-09*	17-Apr-09					640-13 MUDFA & Utilities - Haymarket Yard Entrance to Haymarket Yard Lower
650-12	MUDFA & Utilities - Roseburn Street to Russel Road	0	0%	17-Apr-09*						650-12 MUDFA & Utilities - Roseburn Street to Russel Road
	Haymarket (inc.) to Roseburn Junction (inc.)	734		31-Mar-08 A	23-Mar-11					
49	Haymarket (inc.) to Roseburn Junction (inc.)	1087	35.07%	31-Mar-08 A	23-Mar-11					

Date	Revision	Chec...	Approved
17-Apr-09	Construction Programme Updated V43 & Progress	JAC	

█ Actual Work ◆ Milestone
█ Normal █ % Complete

CEC00971600_0102

Three Month Look Ahead Programme

April 2009 - July 2009

EDINBURGH TRAM NETWORK



Activity ID	Activity Name	Original Duration	Activity % Complete	Start	Finish	2009					
						Apr	May	Jun	Jul	Aug	
Design											
B01060	Scottish Water - Outfall Consent	0	0%	17-Apr-09	17-Apr-09*	1060					
Roadwork											
B25292	Verity House Access Road	30	80%	23-Feb-09 A	24-Apr-09						
Haymarket Station Viaduct (S19)											
WBSSUM004	Haymarket Station Viaduct (S19) (WBS Summary)	451	60.54%	31-Mar-08 A	29-Jan-10						
S19 Substructure											
1139	East Abutment	40	30%	01-Sep-08 A	13-Aug-09						
508	Pier 4	30	75%	11-Nov-08 A	03-Jul-09						
560	West Abutment	40	0%	12-May-09	07-Jul-09						
192	Pier 1	30	0%	12-May-09	23-Jun-09						
Trackwork (1135m)											
B25280	Site Clearance	8	0%	08-Jul-09*	17-Jul-09						
1099	Bulk Excavation - Sub Base	18	0%	20-Jul-09	13-Aug-09						
SECTION 05 ROSEBURN JUNCTION TO GOGAR											
99	SECTION 05 ROSEBURN JUNCTION TO GOGAR	1361	28.22%	31-Oct-07 A	19-Dec-11						
05A Roseburn Junction (exc.) to Balgreen Road (inc.)											
126	05A Roseburn Junction (exc.) to Balgreen Road (inc.)	1237	21.51%	07-Aug-08 A	13-Dec-11						
MUDFA & Utilities Completion Dates											
220	MUDFA & Utilities - Area 5	0	0%	17-Apr-09*		220					
330	MUDFA & Utilities - Area 5	0	0%	17-Apr-09*		330					
Roseburn Junction (exc.) to Murrayfield Stadium (inc.)											
102	Roseburn Junction (exc.) to Murrayfield (inc.)	1224	20.67%	07-Aug-08 A	13-Dec-11						
Design											
B11000	Murrayfield Accommodation Works Design	70	18%	16-Feb-09 A	23-Jun-09						
B01300	Design for Soil Nailing	10	70%	08-Apr-09 A	21-Apr-09						
10180	Issue Construction Drawings - Trackwork	0	0%		17-Apr-09*	0180					
B01070	Scottish Water - Outfall Consent	0	0%		17-Apr-09*	1070					
B20270	W3 Re-design - proximity of existing sewer	0	0%	05-May-09*							
Russel Road Underbridge (S20)											
WBSSum005	Russell Road Underbridge (S20) (WBS Summary)	369	0%	17-Apr-09	20-Apr-10	005					
S20 Documentation											
B20210	WPP and Form C to Client and NR	0	0%	07-May-09							
B20220	NR Form C Approval	35	0%	07-May-09*	25-Jun-09						
B20230	Clearance to Commence Works adjacent to railway	0	0%		25-Jun-09						

Date	Revision	Chec...	Approved
17-Apr-09	Construction Programme Updated V43 & Progress	JAC	

█ Actual Work ◆ Milestone
█ Normal █ % Complete

CEC00971600_0103

Three Month Look Ahead Programme

April 2009 - July 2009

EDINBURGH TRAM NETWORK



Activity ID	Activity Name	Original Duration	Activity % Complete	Start	Finish	2009					
						Apr	May	Jun	Jul	Aug	
S20 Establishment / Demolition / Site Clearance											
A20100	Agreement of Change (RR Walls)	40	0%	17-Apr-09	15-Jun-09*	0100 Agreement of Change (RR Walls)					
B20260	Traffic Management	5	0%	26-Jun-09	02-Jul-09			B20260			
S20 Substructure											
A20090	Trial Soil Nailing	10	0%	22-Apr-09	06-May-09	A20090 Trial Soil Nailing					
B20250	Temporary Works	14	0%	29-Jun-09	16-Jul-09			B20250			
103	Excavation and piling	60	0%	17-Jul-09	09-Oct-09				103		
Russell Road Retaining Walls (W3 and W4)											
WBSSum006	Russell Road Retaining Walls (W3 & W4)	473	31.93%	17-Nov-08 A	04-Mar-10	WBSSum006					
A20110	Agreement of Change	30	0%	17-Apr-09	01-Jun-09*	0110 Agreement of Change					
Demolition / Site Clearance											
250	Demolish Existing Buildings	20	0%	27-May-09	23-Jun-09			250			
Wall 3 Construction											
107	Site Clearance	10	50%	17-Nov-08 A	09-Jun-09						
Wall 4 Construction											
B25310	Site Clearance	10	50%	17-Nov-08 A	23-Jun-09						
B25320	Temporary Access Road	15	0%	23-Jun-09*	14-Jul-09			B25320			
B25330	Pile Caps	15	0%	15-Jul-09	05-Aug-09				B25330		
Murrayfield Tram Stop Retaining Wall (W18)											
WBSSum007	Murrayfield Tramstop Retaining Wall (W18) (WBS Summary)	490	31.43%	24-Nov-08 A	21-Sep-10	WBSSum007					
Wall 18 Construction											
108	Site Clearance	20	20%	24-Nov-08 A	11-Nov-09						
Murrayfield Stadium (exc.) to Balgreen Road (inc.)											
136	Murrayfield (exc.) to Balgreen Road (inc.)	1232	21.59%	19-Aug-08 A	08-Dec-11	136					
A20380	Agreement of Change	40	0%	17-Apr-09	15-Jun-09*	0380 Agreement of Change					
Design											
B20280	Temporary Works Design - S21C Underpass	65	0%	01-Sep-08 A	30-Apr-09	B20280 Temporary Works Design - S21C Underpass					
B20320	SDS Re-Design (Ground Improvement) - S21D	65	0%	01-Oct-08 A	15-May-09	B20320 SDS Re-Design (Ground Improvement) - S21D					
10780	Re-design - S21E Water of Leith Bridge	50	66%	02-Mar-09 A	12-May-09	10780 Re-design - S21E Water of Leith Bridge					
10080	Issue Construction Drawings - Trackwork	0	0%		17-Apr-09*	0080 Issue Construction Drawings - Trackwork					
B01180	Scottish Water - Outfall Consent	0	0%		17-Apr-09*	1180 Scottish Water - Outfall Consent					
Baird Drive Retaining Walls (W8)											
Wall 8 Construction											
468	Reinforced Earth Wall	45	0%	24-Jul-09	25-Sep-09				468		
Foundations											
		15		10-Jul-09	30-Jul-09						

Date	Revision	Chec...	Approved
17-Apr-09	Construction Programme Updated V43 & Progress	JAC	

█ Actual Work ◆ Milestone
█ Normal █ % Complete

CEC00971600_0104

Three Month Look Ahead Programme

April 2009 - July 2009

EDINBURGH TRAM NETWORK



Activity ID	Activity Name	Original Duration	Activity % Complete	Start	Finish	2009				
						Apr	May	Jun	Jul	Aug
458	Foundations	15	0%	10-Jul-09	30-Jul-09				458	Foundations
Roseburn Street Viaduct (S21A)		632		01-Sep-08 A	30-Mar-11					
WBSSum010	Roseburn Street Viaduct (S21A) (WBS Summary)	940	63.62%	01-Sep-08 A	30-Mar-11					
Murrayfield Retaining Walls (S21B)		394		14-Oct-08 A	26-May-10					
110	Site Clearance	20	65%	14-Oct-08 A	17-Nov-09					
WBSSum011	Murrayfield Retaining Walls (S21B) (WBS Summary)	589	47.71%	14-Oct-08 A	26-May-10					
10760	Murrayfield Stadium Accomodation Civil Works	60	0%	22-Jul-09*	14-Oct-09				10760	
B11100	Murrayfield Stadium Building Works	80	0%	27-Jul-09*	16-Nov-09				B11100	
Murrayfield Stadium Underpass (S21C)		150		01-May-09	02-Dec-09					
WBSSum012	Murrayfield Stadium Underpass (S21C) (WBS Summary)	216	0%	01-May-09	02-Dec-09	WBSSum012				
S21C Establishment / Demolition / Site Clearance		30		30-Jun-09	11-Aug-09					
112	Site Clearance	10	0%	30-Jun-09*	13-Jul-09			112	Site Clearance	
187	Temporary Works - Demolition	20	0%	14-Jul-09*	11-Aug-09			187		
S21C Documentation		37		01-May-09	24-Jun-09					
B20290	WPP and Form C to Client and NR	1	0%	01-May-09	01-May-09	B20290	WPP and Form C to Client and NR			
B20300	NR Form C Approval Period	35	0%	05-May-09	23-Jun-09	B20300	NR Form C Approval Period			
B20310	Clearance to Commence Works adjacent to railway	1	0%	24-Jun-09	24-Jun-09			B20310	Clearance to Commence Works adjacent to railway	
05B Balgreen Road (exc.) to Edinburgh Park Central (inc.)		860		31-Oct-07 A	20-Sep-11					
118	05B Balgreen Road (exc.) to Edinburgh Park (inc.)	1271	30.23%	31-Oct-07 A	20-Sep-11					
MUDFA & Utilities Completion Dates		0		17-Apr-09	17-Apr-09					
230	MUDFA & Utilities - Sub-Section 5B	0	0%	17-Apr-09*		230	MUDFA & Utilities - Sub-Section 5B			
660-7/8	MUDFA & Utilities - Edinburgh Park Tram Stop to South Gyle Tram Stop	0	0%	17-Apr-09*		660-7/8	MUDFA & Utilities - Edinburgh Park Tram Stop to South Gyle Tram Stop			
680-7/8	MUDFA & Utilities - Edinburgh Park Tram Stop to South Gyle Tram Stop	0	0%	17-Apr-09*		680-7/8	MUDFA & Utilities - Edinburgh Park Tram Stop to South Gyle Tram Stop			
Balgreen Road (exc.) to Saughton Road North (inc.)		807		05-Aug-08 A	20-Sep-11					
119	Balgreen Road (exc.) to Saughton Road North (inc.)	1194	25.73%	05-Aug-08 A	20-Sep-11					
Design		10		17-Apr-09	01-May-09					
B01080	Scottish Water - Outfall Consent	0	0%		17-Apr-09*	1080	Scottish Water - Outfall Consent			
12830	Issue Construction Drawings - Trackwork	0	0%		01-May-09*	12830	Issue Construction Drawings - Trackwork			
Carricknowe Bridge (S23)		357		18-Aug-08 A	07-Apr-10					
WBSSum015	Carrick Knowe Bridge (S23) (WBS Summary)	535	33.47%	18-Aug-08 A	07-Apr-10					
A20120	Agreement of Change	0	100%	08-Apr-09 A	08-Apr-09 A			Agreement of Change		
S23 Planned Rail Possessions		37		17-Apr-09	11-Jun-09					
B20140	Sun 01 Mar 00:30 - Mon 02 Mar 04:20	1	0%	17-Apr-09*	17-Apr-09	0140	Sun 01 Mar 00:30 - Mon 02 Mar 04:20			
B20160	(All Suns 00:30 - 08:30)	1	0%	17-Apr-09	17-Apr-09	0160	(All Suns 00:30 - 08:30)			
B20150	Wed 10 Jun - Thurs 11 Jun	1	0%	10-Jun-09*	11-Jun-09			B20150	Wed 10 Jun - Thurs 11 Jun	

Date	Revision	Chec...	Approved
17-Apr-09	Construction Programme Updated V43 & Progress	JAC	

█ Actual Work ◆ Milestone
█ Normal █ % Complete

CEC00971600_0105

Three Month Look Ahead Programme

April 2009 - July 2009

EDINBURGH TRAM NETWORK



Activity ID	Activity Name	Original Duration	Activity % Complete	Start	Finish	2009					
						Apr	May	Jun	Jul	Aug	
S23 Substructure											
B20361	South Abutment	110	5%	02-Mar-09 A	28-Sep-09						
B20351	North Abutment	110	0%	08-May-09	12-Oct-09						
Trackwork (1690m)											
A20130	Agreement of Change	0	100%	23-Feb-09 A	17-Apr-09 A						
Concrete Slab Track 590m											
5B-10C-TRCK-69	Track laying Demob 1A / Remob 5B	3	0%	17-Apr-09*	21-Apr-09						
1544	OLE Foundations - Drainage - Ducts	24	0%	17-Apr-09	21-May-09						
5B-10C-TRCK-70	Track laying	26	0%	22-May-09	29-Jun-09						
1543	Trackwork	34	0%	02-Jun-09*	20-Jul-09						
1679	Fencing & Finishes	12	0%	30-Jun-09	15-Jul-09						
Saughton Road North Tram Stop											
123	Civil Engineering and Building Works	65	0%	30-Jun-09	29-Sep-09						
Saughton Road North (exc.) to Bankhead (inc.)											
124	Saughton road North (exc.) to South Gyle Access (inc.)	790	29.51%	05-Aug-08 A	06-Jun-11						
Design											
B20340	S26 "On Hold" awaiting TIE decision on design	0	0%	17-Apr-09*							
13240	W11 - Re-design	30	0%	17-Apr-09	01-Jun-09*						
12890	Issue Construction Drawings - Trackwork	0	0%		17-Apr-09*						
B01190	Scottish Water - Outfall Consent	0	0%	17-Apr-09*							
Bankhead Retaining Wall (W11)											
WBSSum016	Bankhead Retaining Wall (W11) (WBS Summary)	28	0%	30-Jun-09	27-Jul-09						
Wall 11 Construction											
127	Retaining Wall Construction	20	0%	30-Jun-09	27-Jul-09						
South Gyle Access Bridge (S26)											
WBSSum017	South Gyle Access Bridge (S26) (WBS Summary)	284	0%	17-Apr-09	25-Jan-10						
A20390	Agreement of Change	40	0%	17-Apr-09	15-Jun-09*						
S26 Substructure											
156	Substructure	83	0%	30-Jun-09	23-Oct-09						
Trackwork (1260m)											
223	Earthworks and Subbase	8	0%	18-May-09	29-May-09						
510	OLE Foundations - Drainage - Ducts	28	0%	29-May-09	08-Jul-09						
Bankhead (exc.) to Edinburgh Park Station (inc.)											
130	South Gyle Access (exc.) to Edinburgh Park Station (inc.)	730	27.29%	01-Oct-08 A	29-Apr-11						
A20420	Agreement of Change	40	0%	17-Apr-09	16-Jun-09*						

Date	Revision	Chec...	Approved
17-Apr-09	Construction Programme Updated V43 & Progress	JAC	

█ Actual Work ◆ Milestone
█ Normal █ % Complete

CEC00971600_0106

Three Month Look Ahead Programme

April 2009 - July 2009

EDINBURGH TRAM NETWORK



Activity ID	Activity Name	Original Duration	Activity % Complete	Start	Finish	2009				
						Apr	May	Jun	Jul	Aug
Design										
12900	Issue Construction Drawings - Trackwork	0	0%	17-Apr-09	17-Apr-09	2900	◆ Issue Construction Drawings - Trackwork			
B01200	Scottish Water - Outfall Consent	0	0%	17-Apr-09	17-Apr-09	1200	◆ Scottish Water - Outfall Consent			
Trackwork (790m)										
213	Earthworks and Subbase	15	5%	14-Oct-08 A	06-Jul-09					
500	OLE Foundations - Drainage	32	0%	06-Jul-09	20-Aug-09				500	
Edinburgh Park Station (exc.) to Edinburgh Park Central (inc.)										
133	Edinburgh Park Station (exc.) to Edinburgh Park (inc.)	835	31.09%	31-Oct-07 A	16-Aug-11					
Design										
12930	Issue Construction Drawings - Trackwork	0	0%	17-Apr-09	17-Apr-09	2930	◆ Issue Construction Drawings - Trackwork			
B01210	Scottish Water - Outfall Consent	0	0%	17-Apr-09	17-Apr-09	1210	◆ Scottish Water - Outfall Consent			
Edinburgh Park Station Bridge (S27)										
WBSSum018	Edinburgh Park Station Bridge (S27) (WBS Summary)	493	52.56%	31-Oct-07 A	29-Mar-10					
S27 Planned Rail Possessions										
B20090	(All Suns 00:30 - 08:30)	37	0%	17-Apr-09	11-Jun-09	0090	▣ (All Suns 00:30 - 08:30)			
B20080	Wed 10 Jun - Thurs 11 Jun	1	0%	10-Jun-09	11-Jun-09			B20080	▣ Wed 10 Jun - Thurs 11 Jun	
S27 Superstructure										
B20110	Superstructure	151	10%	08-Apr-09 A	25-Nov-09					
S27 Finishes										
13440	North Approach Ramp	313	03-Nov-08 A	02-Jul-09						
13450	South Approach Ramp	53	10%	03-Nov-08 A	02-Jul-09					
Trackwork (854m)										
203	Earthworks- Subbase	228	5%	15-Sep-08 A	19-Aug-09					
490	OLE Foundations - Drainage	11	5%	15-Sep-08 A	30-Jun-09				490	
829	Track Formation - Ducts	19	0%	30-Jun-09	27-Jul-09					
05C Edinburgh Park Central (exc.) to Gogarburn (inc.)										
137	05C Edinburgh Park (exc.) to Gogarburn (inc.)	838	21.09%	10-Sep-08 A	19-Dec-11					
690-2/3/6	MUDFA & Utilities - Gogarburn TS to Edinburgh Park TS BT Works	1238	0%	10-Sep-08 A	19-Dec-11					
MUDFA & Utilities Completion Dates										
240	MUDFA & Utilities - Sub-Section 5C	0	0%	17-Apr-09	17-Apr-09	2/3/6	◆ MUDFA & Utilities - Gogarburn TS to Edinburgh Park TS BT Works			
700-2/3/6	MUDFA & Utilities - Gogarburn TS to Edinburgh Park TS Sewer	0	0%	17-Apr-09	17-Apr-09	240	◆ MUDFA & Utilities - Sub-Section 5C			
710-3	MUDFA & Utilities - Gogarburn A8 Roundabout to Edinburgh Park TS	0	0%	17-Apr-09	17-Apr-09	710-3	◆ MUDFA & Utilities - Gogarburn TS to Edinburgh Park TS Sewer			
720-2/3	MUDFA & Utilities - Gogarburn TS to Gogarburn A8 Roundabout	0	0%	17-Apr-09	17-Apr-09	710-3	◆ MUDFA & Utilities - Gogarburn A8 Roundabout to Edinburgh Park TS			
Edinburgh Park Central (exc.) to Gyle Centre (inc.)										
138	Edinburgh Park (exc.) to Gyle (inc.)	569	25.46%	10-Sep-08 A	12-Jan-11	0-2/3	◆ MUDFA & Utilities - Gogarburn TS to Gogarburn A8 Roundabout			

Date	Revision	Chec...	Approved
17-Apr-09	Construction Programme Updated V43 & Progress	JAC	

█ Actual Work ◆ Milestone
█ Normal █ % Complete

CEC00971600_0107

Three Month Look Ahead Programme

April 2009 - July 2009

EDINBURGH TRAM NETWORK



Activity ID	Activity Name	Original Duration	Activity % Complete	Start	Finish	2009				
						Apr	May	Jun	Jul	Aug
Design										
12950	Issue Construction Drawings - Trackwork	0	0%	17-Apr-09	17-Apr-09*	2950				
12970	Issue Construction Drawings - W16	0	0%	17-Apr-09	17-Apr-09*	2970				
B01220	Scottish Water - Outfall Consent	0	0%	17-Apr-09	17-Apr-09*	1220				
Gyle Centre Tram Stop Retaining Wall (W19)										
WBSSum019	Gyle Centre Tramstop Retaining Wall (W19) (WBS Summary)	74	0%	17-Apr-09	29-Jun-09	n019	Gyle Centre Tramstop Retaining Wall (W19) (WBS Summary)			
A20400	Agreement of Change	20	0%	17-Apr-09	15-May-09*	0400	Agreement of Change			
Wall 19 Construction										
139	Wall Construction	20	0%	02-Jun-09	29-Jun-09	139				
Trackwork (760m)										
140	Earthworks and Subbase	20	0%	30-Jun-09	27-Jul-09			140		Earthworks and S
183	OLE Foundations - Drainage	30	0%	28-Jul-09	08-Sep-09				183	
Gyle Centre (exc.) to Depot Stop (inc.)										
142	Gyle (exc.) to Depot Stop (inc.)	1163	22.46%	01-Oct-08 A	05-Oct-11					
Design										
13160	Re-design S28 A8 Underpass	40	50%	17-Mar-09 A	15-May-09*		Re-design S28 A8 Underpass			
12990	Issue Construction Drawings - S32 Depot Access Bridge	0	0%	17-Apr-09	17-Apr-09*	2990				
10590	Issue Construction Drawings - Trackwork	0	0%	17-Apr-09	17-Apr-09*	0590				
B01230	Scottish Water - Outfall Consent	0	0%	17-Apr-09	17-Apr-09*	1230				
A8 Underpass (S28)										
WBSSum020	A8 Underpass (S28) (WBS Summary)	379	12.93%	15-Oct-08 A	13-Apr-10					
S28 Establishment / Demolition / Site Clearance										
153	Working around BT ducts	20	0%	13-Jul-09	11-Aug-09				153	
S28 Construction										
143	Phase 1	46	15%	15-Oct-08 A	13-Jul-09					Phase 1
A8 Retaining Walls (W16)										
145	Soil Nailing	95	0%	21-Jul-09	03-Dec-09				145	
Depot Access Bridge (S32)										
WBSSum021	Depot Access Bridge (S32) (WBS Summary)	525	0%	17-Apr-09	24-Sep-10	n021				
A20410	Agreement of Change	40	0%	17-Apr-09	15-Jun-09*	0410	Agreement of Change			
Depot Stop (exc.) to Gogarburn (inc.)										
147	Depot Stop (exc.) to Gogarburn (inc.)	770	3.64%	07-Oct-08 A	28-Apr-11					
Design										
B01240	Scottish Water - Outfall Consent	0	0%	17-Apr-09	17-Apr-09*	1240				
SECTION O6 GOGAR DEPOT										
		887		28-Sep-07 A	09-May-11					

Date	Revision	Chec...	Approved
17-Apr-09	Construction Programme Updated V43 & Progress	JAC	

█ Actual Work █ Milestone
 Normal % Complete

CEC00971600_0108

Three Month Look Ahead Programme

April 2009 - July 2009

EDINBURGH TRAM NETWORK



Activity ID	Activity Name	Original Duration	Activity % Complete	Start	Finish	2009				
						Apr	May	Jun	Jul	Aug
150	SECTION 06 GOGAR DEPOT	1321	43%	28-Sep-07 A	09-May-11					
06A Gogar Depot		887		28-Sep-07 A	09-May-11					
152	06A Gogar Depot	1321	43%	28-Sep-07 A	09-May-11					
Design Stage Consents		75		28-Sep-07 A	01-May-09					
A17300	British Airports Authority	75	90%	28-Sep-07 A	01-May-09	British Airports Authority				
MUDFA & Utilities Completion Dates		0		17-Apr-09	17-Apr-09					
255	MUDFA & Utilities - Depot Watermain Diversion	0	0%	17-Apr-09*		255 ◆ MUDFA & Utilities - Depot Watermain Diversion				
810-1/2	MUDFA & Utilities - Gogarburn 800mm Water Main	0	0%	17-Apr-09*		810-1/2 ◆ MUDFA & Utilities - Gogarburn 800mm Water Main				
Depot		541		09-Feb-09 A	03-Dec-09					
Design		10		17-Apr-09	01-May-09					
1158	Issue Construction Drawings - Procurement	0	0%	17-Apr-09*		1158 ◆ Issue Construction Drawings - Procurement				
B01090	Scottish Water - Outfall Consent	0	0%	17-Apr-09*		1090 ◆ Scottish Water - Outfall Consent				
B01091	Issue Construction Drawings - Roadworks	0	0%	17-Apr-09*		1091 ◆ Issue Construction Drawings - Roadworks				
13140	Issue Construction Drawings - Drainage	0	0%	01-May-09*		13140 ◆ Issue Construction Drawings - Drainage				
Establishment / Earthworks / Drainage		541		09-Feb-09 A	03-Dec-09					
B25505	Site Possession (40%)	20	100%	09-Feb-09 A	01-May-09 A	Site Possession (40%)				
B25515	Excavate to Tip 61,000cu.m	73	10%	07-Apr-09 A	21-Jul-09	Excavate to Tip 61,000cu.m				
1149	Earthworks 80,000cu.m	95	0%	21-Jul-09*	03-Dec-09	1149				
1289	Drainage and Outfall	90	0%	28-Jul-09	03-Dec-09	1289				
Depot Building		111		02-Jun-09	04-Nov-09					
A17170	Foundations	55	0%	20-Aug-09	04-Nov-09					
Procurement		64		02-Jun-09	01-Sep-09					
1159	Steel Work Fabrication	64	0%	02-Jun-09	01-Sep-09	1159				
SECTION 07 GOGAR TO EDINBURGH AIRPORT		845		05-Aug-08 A	25-Oct-11					
155	SECTION 07 GOGAR TO EDINBURGH AIRPORT	1246	26.02%	05-Aug-08 A	25-Oct-11					
07A Gogarburn (exc.) to Edinburgh Airport (inc.)		845		05-Aug-08 A	25-Oct-11					
157	07A Gogarburn (exc.) to Edinburgh Airport (inc.)	1246	26.02%	05-Aug-08 A	25-Oct-11					
MUDFA & Utilities Completion Dates		0		17-Apr-09	17-Apr-09					
260	MUDFA & Utilities - Area 9 completion	0	0%	17-Apr-09*		260 ◆ MUDFA & Utilities - Area 9 completion				
340	MUDFA & Utilities - Area 9 completion	0	0%	17-Apr-09*		340 ◆ MUDFA & Utilities - Area 9 completion				
730-4	MUDFA & Utilities - Gogarburn TS to Ingliston Park & Ride	0	0%	17-Apr-09*		30-4 ◆ MUDFA & Utilities - Gogarburn TS to Ingliston Park & Ride				
800-5	MUDFA & Utilities - Edinburgh Airport to Ingliston Park & Ride	0	0%	17-Apr-09*		300-5 ◆ MUDFA & Utilities - Edinburgh Airport to Ingliston Park & Ride				
Gogarburn (exc.) to Inglishton Park & Ride (inc.)		791		05-Aug-08 A	10-Aug-11					
158	Gogarburn (exc.) to Inglishton Park & Ride (inc.)	1170	27.71%	05-Aug-08 A	10-Aug-11					
Design		0		17-Apr-09	17-Apr-09					

Date	Revision	Chec...	Approved
17-Apr-09	Construction Programme Updated V43 & Progress	JAC	

█ Actual Work ◆ Milestone
█ Normal █ % Complete

CEC00971600_0109

Three Month Look Ahead Programme

April 2009 - July 2009

EDINBURGH TRAM NETWORK



Activity ID	Activity Name	Original Duration	Activity % Complete	Start	Finish	2009				
						Apr	May	Jun	Jul	Aug
13070	Issue Construction Drawings - Ingliston Park & Ride Tramstop	0	0%	17-Apr-09*	3070	Issue Construction Drawings - Ingliston Park & Ride Tramstop				
Enabling Works										
A2000	Site and Vegetation Clearance	28	15%	20-Oct-08 A	21-May-09	Site and Vegetation Clearance				
Gogarburn Underbridge (S29)										
WBSSum022	Gogarburn Underbridge (S29) (WBS Summary)	361	49.58%	20-Oct-08 A	15-Oct-09					
S29 Substructure										
179	East Abutment-Piles and Columns	36	100%	01-Dec-08 A	08-Apr-09 A	East Abutment-Piles and Columns				
209	West Abutment-Piles and Columns	36	100%	08-Dec-08 A	08-Apr-09 A	West Abutment-Piles and Columns				
219	West Abutment-Reinforced Earth	15	30%	04-Mar-09 A	26-May-09	West Abutment-Reinforced Earth				
189	East Abutment-Reinforced Earth	15	30%	13-Mar-09 A	08-May-09	East Abutment-Reinforced Earth				
S29 Establishment / Demolition / Site Clearance										
13041	Treat area of contaminated land	130	0%	17-Apr-09	15-Oct-09	13041				
S29 Superstructure										
239	Bridge Deck	41	0%	26-May-09	22-Jul-09	239 Bridge Deck				
199	East Abutment-Parapets and Run on Slabs	29	0%	15-Jul-09	26-Aug-09	199				
Gogarburn Culvert No1 (S30)										
WBSSum023	Gogarburn Culvert No.1 (S30) (WBS Summary)	75	37.4%	16-Feb-09 A	02-Jun-09	Gogarburn Culvert No.1 (S30) (WBS Summary)				
249	Precast Culvert Units	5	100%	23-Mar-09 A	10-Apr-09 A	Precast Culvert Units				
259	Reinforced Concrete Apron and Wingwalls	20	0%	17-Apr-09	15-May-09	259 Reinforced Concrete Apron and Wingwalls				
269	Backfill and Finishes	11	0%	18-May-09	02-Jun-09	269 Backfill and Finishes				
Trackwork (1750m)										
A20140	Agreement of Change	30	10%	13-Apr-09 A	27-May-09	Agreement of Change				
162	Earthworks and Subbase	37	0%	10-Jul-09	02-Sep-09	162				
Ingliston Park & Ride (exc.) to Edinburgh Airport (inc.)										
164	Ingliston Park & Ride (exc.) to Edinburgh Airport (inc.)	1006	8.35%	10-Sep-08 A	25-Oct-11	164				
Design										
13080	Issue Construction Drawings - W14	0	0%	17-Apr-09*	04-Jun-09*	3080 Issue Construction Drawings - W14				
13120	Issue Construction Drawings - Edinburgh Airport Tramstop	0	0%	04-Jun-09*		13120 Issue Construction Drawings - Edinburgh Airport Tramstop				
Enabling Works										
A1930	Site and Vegetation Clearance	28	0%	17-Apr-09	28-May-09	1930 Site and Vegetation Clearance				
Gogarburn Retaining Wall (W14)										
WBSSum024	Gogarburn Retaining Wall (W14) (WBS Summary)	328	0%	17-Apr-09	10-Mar-10	024				
Wall 14/1 Construction										
A20150	Agreement of Change	40	0%	17-Apr-09	15-Jun-09	0150 Agreement of Change				
Gogarburn Culvert No2 (S31)										
		164		05-Jan-09 A	18-Jun-09					

Date	Revision	Chec...	Approved
17-Apr-09	Construction Programme Updated V43 & Progress	JAC	

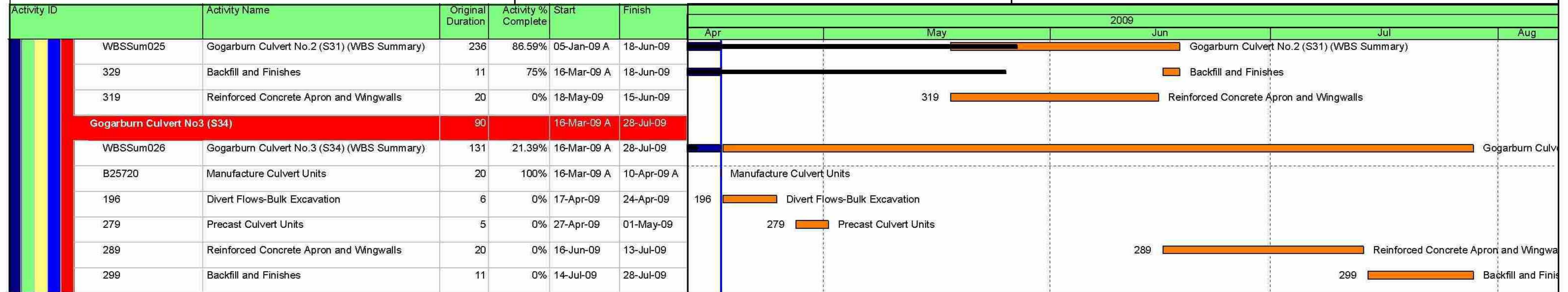
█ Actual Work ◆ Milestone
█ Normal █ % Complete

CEC00971600_0110

Three Month Look Ahead Programme

April 2009 - July 2009

EDINBURGH TRAM NETWORK



Date	Revision	Chec...	Approved
17-Apr-09	Construction Programme Updated V43 & Progress	JAC	

█ Actual Work ◆ Milestone
█ Normal █ % Complete

CEC00971600_0111

10.4 Tram Programme



SUPPLY OF 27 TRAMS FOR THE EDINBURGH TRAM NETWORK
PROJECT PLANNING up to 2nd of May

Id	Name	%	Start	Finish	2008												2009												2010												2011											
					M	A	M	J	J	A	S	O	N	D	E	F	M	A	M	J	J	A	S	O	N	D	E	F	M	A	M	J	J	A	S	O	N	D	E	F	M	A	M	J	J							
1	GENERAL	100%	06/05/08	06/05/08																																																
2	NTP	100%	06/05/08	06/05/08																																																
3	ENGINEERING	99%	06/05/08	15/05/09																																																
4	BASIC ENGINEERING	100%	06/05/08	13/11/08																																																
5	MOCK-UP	100%	13/05/08	05/11/08																																																
6	DESIGN & MANUFACTURING MOCK-UP	100%	13/05/08	29/09/08																																																
7	APPROVAL MOCK-UP	100%	30/09/08	05/11/08																																																
8	UNDERFRAME DESIGN	100%	01/07/08	24/11/08																																																
9	CARBODY DESIGN	100%	28/08/08	29/04/09	Bus Tracker not officially closed																																															
10	LIST OF STEEL MATERIALS	100%	11/06/08	11/06/08																																																
11	INSTALLATIONS DESIGN	100%	24/10/08	14/04/09																																																
12	INTERIORS & FINISHING DESIGN	93%	25/11/08	15/05/09																																																
13	BOGIES DESIGN	100%	23/07/08	15/01/09																																																
14	1st TRAMSET PROCUREMENT	92%	06/05/08	01/07/09																																																
15	SYSTEMS	93%	06/05/08	01/07/09																																																
16	SPECIFICATIONS	100%	06/05/08	04/06/08																																																
17	SELECTION OF SUPPLIERS	100%	21/05/08	01/07/08																																																
18	ORDERS	100%	17/06/08	29/07/08																																																
19	INTERFACE 1- Systems Interface Basic Definition	100%	30/07/08	29/04/09																																																
20	CAF SYSTEMS	100%	30/07/08	31/10/08																																																
21	TPDS	100%	30/07/08	09/01/09																																																
22	RADIO	100%	30/07/08	04/02/09																																																
23	BUS TRACKER	100%	30/07/08	29/04/09	Not officially closed																																															
24	INTERFACE 2- Systems Interface Complete Definition	100%	25/09/08	29/04/09																																																
25	CAF SYSTEMS	100%	25/09/08	15/12/08																																																
26	TPDS	100%	25/09/08	06/02/09																																																
27	RADIO	100%	25/09/08	04/03/09																																																
28	BUS TRACKER	100%	25/09/08	29/04/09	Not officially closed																																															
29	MANUFACTURING & PURCHASING & TESTING	82%	27/06/08	01/07/09																																																
30	DELIVERY PREASSEMBLIES COMPONENTS	100%	15/04/09	15/04/09																																																
31	DELIVERY FIRST EQUIPMENT	25%	15/04/09	01/07/09																																																
32	OTHERS COMPONENTS & MATERIALS	89%	11/06/08	25/06/09																																																
33	STEEL MATERIALS	100%	11/06/08	24/11/08																																																
34	CARBODY COMPONENTS	100%	24/10/08	16/03/09																																																
35	INSTALLATIONS COMPONENTS	98%	16/12/08	08/05/09																																																
36	INTERIORS & FINISHING COMPONENTS	59%	17/02/09	25/06/09																																																
37	1st TRAM MANUFACTURING & TESTING	34%	14/11/08	04/06/10																																																
38	BODYSHELLS MANUFACTURING	100%	14/11/08	02/06/09																																																
39	JIGS & TOOLING MANUFACTURING	100%	14/11/08	16/03/09																																																
40	FRAME TOOLING	100%	14/11/08	09/02/09																																																
41	BODYSHELL TOOLING	100%	12/01/09	16/03/09																																																
42	1st BODYSHELL MANUFACTURING	100%	25/11/08	16/04/09																																																
43	FIRST PIECES LOT	100%	25/11/08	07/01/09																																																



SUPPLY OF 27 TRAMS FOR THE EDINBURGH TRAM NETWORK
PROJECT PLANNING up to 2nd of May

Id	Name	%	Start	Finish	2008												2009												2010												2011											
					M	A	M	J	J	A	S	O	N	D	E	F	M	A	M	J	J	A	S	O	N	D	E	F	M	A	M	J	J	A	S	O	N	D	E	F	M	A	M	J	J							
75	REMAINING TRAM'S	1%	18/03/09	04/02/11																																																
76	2nd Tram	11%	18/03/09	04/06/10																																																
77	BODYSHELLS MANUFACTURING & FINISHING	18%	18/03/09	24/12/09																																																
78	FACTORY & DYNAMIC TESTS	0%	09/12/09	19/04/10																																																
79	TRANSPORT	0%	19/04/10	10/05/10																																																
80	DELIVERY OF THE TRAM	0%	10/05/10	10/05/10																																																
81	COMMISSIONING OF THE TRAM	0%	10/05/10	04/06/10																																																
82	3rd Tram	6%	07/04/09	04/06/10																																																
83	BODYSHELLS MANUFACTURING & FINISHING	10%	07/04/09	20/01/10																																																
84	FACTORY & DYNAMIC TESTS	0%	05/01/10	19/04/10																																																
85	TRANSPORT	0%	19/04/10	10/05/10																																																
86	DELIVERY OF THE TRAM	0%	10/05/10	10/05/10																																																
87	COMMISSIONING OF THE TRAM	0%	10/05/10	04/06/10																																																
88	4th Tram	1%	29/04/09	04/06/10																																																
89	BODYSHELLS MANUFACTURING & FINISHING	2%	29/04/09	09/02/10																																																
90	FACTORY & DYNAMIC TESTS	0%	25/01/10	19/04/10																																																
91	TRANSPORT	0%	19/04/10	10/05/10																																																
92	DELIVERY OF THE TRAM	0%	10/05/10	10/05/10																																																
93	COMMISSIONING OF THE TRAM	0%	10/05/10	04/06/10																																																
94	5th Tram	0%	20/05/09	04/06/10																																																
95	BODYSHELLS MANUFACTURING & FINISHING	0%	20/05/09	01/03/10																																																
96	FACTORY & DYNAMIC TESTS	0%	12/02/10	19/04/10																																																
97	TRANSPORT	0%	19/04/10	10/05/10																																																
98	DELIVERY OF THE TRAM	0%	10/05/10	10/05/10																																																
99	COMMISSIONING OF THE TRAM	0%	10/05/10	04/06/10																																																
100	6th Tram	0%	19/06/09	05/07/10																																																
101	BODYSHELLS MANUFACTURING & FINISHING	0%	19/06/09	16/03/10																																																
102	FACTORY TESTS	0%	26/02/10	01/06/10																																																
103	TRANSPORT	0%	01/06/10	15/06/10																																																
104	DELIVERY OF THE TRAM	0%	15/06/10	15/06/10																																																
105	COMMISSIONING OF THE TRAM	0%	15/06/10	05/07/10																																																
106	7th Tram	0%	21/07/09	05/07/10																																																
107	BODYSHELLS MANUFACTURING & FINISHING	0%	21/07/09	31/03/10																																																
108	FACTORY TESTS	0%	15/03/10	01/06/10																																																
109	TRANSPORT	0%	01/06/10	15/06/10																																																
110	DELIVERY OF THE TRAM	0%	15/06/10	15/06/10																																																
111	COMMISSIONING OF THE TRAM	0%	15/06/10	05/07/10																																																
112	8th Tram	0%	17/09/09	04/08/10																																																
113	BODYSHELLS MANUFACTURING & FINISHING	0%	17/09/09	15/04/10																																																
114	FACTORY TESTS	0%	30/03/10	01/07/10																																																
115	TRANSPORT	0%	01/07/10	15/07/10																																																
116	DELIVERY OF THE TRAM	0%	15/07/10	15/07/10																																																
117	COMMISSIONING OF THE TRAM	0%	15/07/10	04/08/10																																																

**INFORME DE AVANCE DE FABRICACIÓN
MANUFACTURING STATUS
"EDINBURGH TRAM"**

1. ARMADO DE CAJA/ BODYSHELL ASSEMBLY



1 Caja D-2 / Bodyshell D-2



2 Caja A-2 / Bodyshell A-2

INFORME DE AVANCE DE FABRICACIÓN MANUFACTURING STATUS "EDINBURGH TRAM"

2. ENDEREZADO DE CAJA / BODYSHELL STRAIGHTEN



3. Enderezado caja C-2 / C-2 Bodyshell straighten

3. COLOCACIÓN SOPORTERÍA / BODYSHELL SUPPORTS PLACING



4 Caja B-2 / Bodyshell B-2

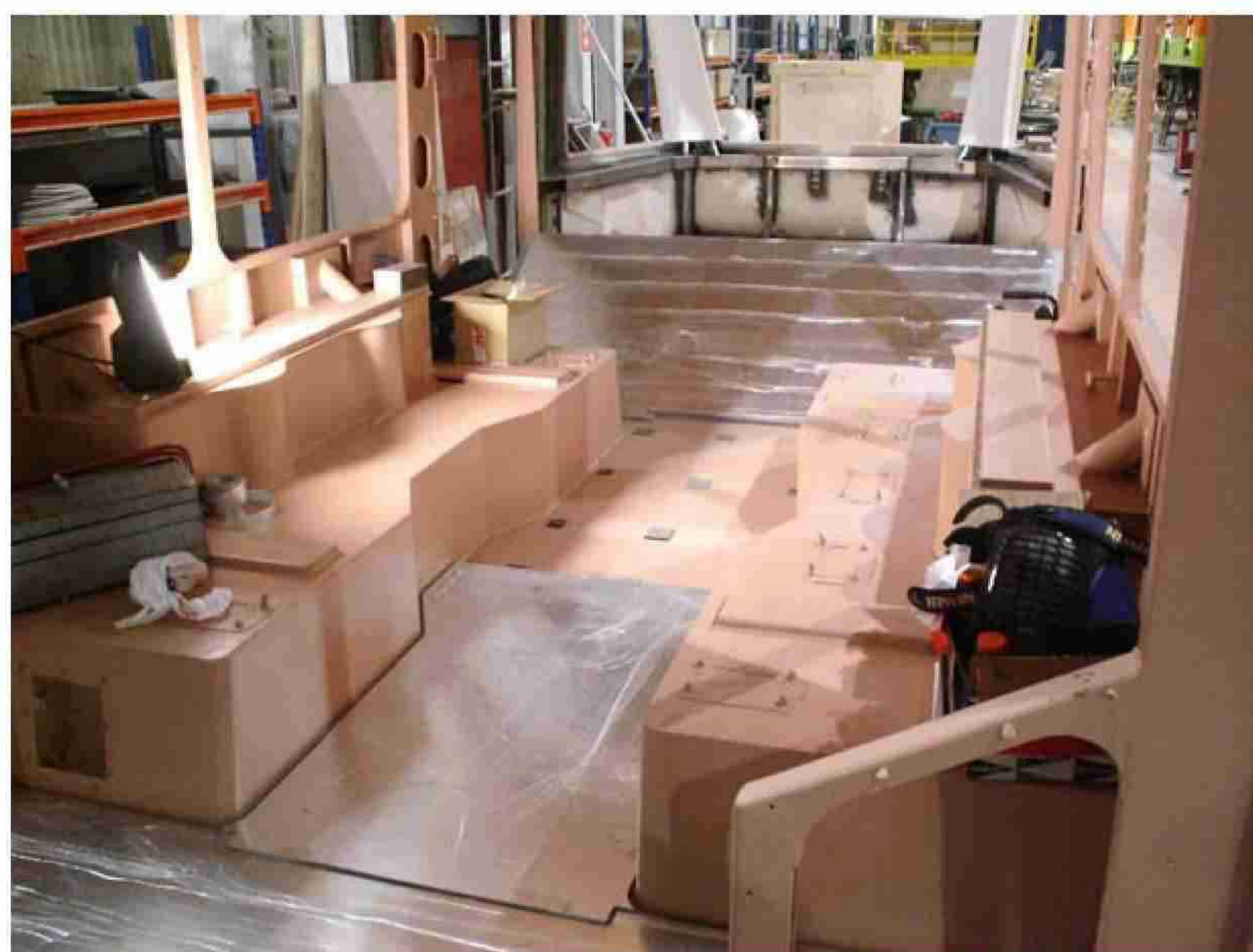
**INFORME DE AVANCE DE FABRICACIÓN
MANUFACTURING STATUS
"EDINBURGH TRAM"**

4. PLANTILLA MEDICIÓN CAJA / BODYSHELL MEASUREMENT JIG



5 Cajas A-ensayos/ A-test Bodyshell

5.- MONTAJE TABLEROS DE PISO/ FLOOR PANEL ASSEMBLY



6 Cajas A-1 / A-1 Bodyshell

**INFORME DE AVANCE DE FABRICACIÓN
MANUFACTURING STATUS
"EDINBURGH TRAM"**

6.- MONTAJE TESTERO / POLYESTER FRONT END ASSEMBLY



7 Cajas A-1 / A-1 Bodyshell

7.- PROCESO DE PINTURA / BODYSHELL PAINTING PROCESS (PRIMER)



8 Cajas F-1/ F-1 Bodyshell

**INFORME DE AVANCE DE FABRICACIÓN
MANUFACTURING STATUS
"EDINBURGH TRAM"**



9 Cajas F-1/ F-1 Bodyshell

8.- CAJAS PINTADAS / PAINTED BODYSHELLS



10 Cajas B-1/ B-1 Bodyshell

INFORME DE AVANCE DE FABRICACIÓN MANUFACTURING STATUS "EDINBURGH TRAM"



11 Cajas C-1/ C-1 Bodyshell

Fdo. / Signed: Idoia Garmendia
Resp. G. Calidad CAF / CAF Q.A.

10.5 RFI Register

Process Register

Company Bilfinger Berger Civil
Channel etn



Status	System Ref	WorkPackage Ref	Publishing Company	Title	Content	Publishing User	Issued Date
Not satisfactorily answered	RFI-00048	1111-1	Graham Construction	RFI 048 - LOD AT ROSEBURN GARAGES MURRAYFIELD SECTION 5A	LOD AT ROSEBURN GARAGES - MURRAYFIELD SECTION 5A Issued 13.06.08 Response Received 03.07.08 - TRN-	Des Millar	23/07/2008
Open	RFI-00059	BSC-58	Siemens Transportation Systems	RFI 059 - ELECTRICITY SUPPLIES	ELECTRICITY SUPPLIES Issued 25.06.08 response Received 03.07.08 - TRN-01512	Nigel Baskerville	24/07/2008
Open	RFI-00060	BSC-59	PB	RFI 060 - RETAINING WALLS	RETAINING WALLS Issued 27.06.08 Resposne Received 16.07.08 - TRN-01584	Alan Dolan	24/07/2008
Open	RFI-00065	BSC-64	Siemens Transportation Systems	RFI 065 - ELECTRICITY AND METER SUPPLIER	ELECTRICITY AND METER SUPPLIER Issued 03.07.08 Resposne Received 10.07.08 - TRN-1544	Roland Brueckmann	24/07/2008
Open	RFI-00073	BSC-72	Siemens Transportation Systems	RFI 073 - DEPOT TRANSFORMER	DEPOT TRANSFORMER Issued 11.07.08 Response Received 16.07.08 - TRN-01584	Robert Kraemer	24/07/2008
Open	RFI-00074	BSC-73	Siemens Transportation Systems	RFI 074 - WASHING PLANT DESIGN	WASHING PLANT DESIGN Issued 11.07.08 Response Received 16.07.08 - TRN-01584	Norbert Wunder	24/07/2008
Open	RFI-00075	BSC-74	Siemens Transportation Systems	RFI 075 - REQUIREMENTS FPR FLOATING SLAB	REQUIREMENTS FPR FLOATING SLAB Issued 11.07.08 Response Received 21.07.08 - TRN-01600	Robert Kraemer	24/07/2008
Open	RFI-00076	BSC-75	Siemens Transportation Systems	RFI 076 - DATA REQUIRED FOR NEW ELECTRICITY APPLICATIONS	DATA REQUIRED FOR NEW ELECTRICITY APPLICATIONS Issued 11.07.08 Response Received 18.07.08	Nigel Baskerville	24/07/2008
Open	RFI-00077	BSC-76	Siemens Transportation Systems	RFI 077 - RE-ISSUE OF RFI 067	RE-ISSUE OF RFI 067 Issued 14.07.08 Response Received 18.07.08 - TRN-01596	Robert Kraemer	24/07/2008
Open	RFI-00079	BSC-78	PB	RFI 079 - LAND	LAND Issued 18.07.08 Response Received 21.07.08	Alan Dolan	24/07/2008
Not satisfactorily answered	RFI-00082	BSC-81	Siemens Transportation Systems	RFI 082 - TRAMSOP LIGHTING	TRAMSOP LIGHTING Issued 31.07.08	Roland Brueckmann	31/07/2008
Open	RFI-00098	BSC-97	Siemens Transportation Systems	RFI 00098- ETN(TRW)TIE&ABC#050013; Additional Turnouts	Drawing No. ULE90130-01-TAL-00004 Rev. 4 (see attachment) illustrates a scissor crossover as provisi	Robert Kraemer	15/08/2008

CEC00971600_0127

Process Register

Company Bilfinger Berger Civil
Channel etn



Not satisfactorily answered	RFI-00099	BSC-98	Siemens Transportation Systems	RFI 00099- ETN(DWE)TIE&ABC050014_ Compressed Air	Following previous versions of the ER the technical proposal for the DWE considers a Compressed Air	Robert Kraemer	15/08/2008
Not satisfactorily answered	RFI-00100	BSC-99	Siemens Transportation Systems	RFI 00100- ETN(TRW)TIE&ABC#050020 - Value Engineering TRW	Value Engineering Opportunity – Change from Embedded track to ballasted track; Tie reference: INF_CO	Klaus Dieker	20/08/2008
Not satisfactorily answered	RFI-00103	BSC-102	Siemens Transportation Systems	RFI 00103- ETN(SIG)TIE&ABC#050027 Timetable System	Please provide details of the tram timetable system proposed for the Edinburgh Tram project and in p	Robert Kraemer	25/08/2008
Open	RFI-00110		Siemens Transportation Systems	SERVICE VEHICLE PAYLOAD (ETN(DWE)TIE&ABC#050059)	In the Employer's Requirements, Section 29.14-Depot, Provisional Schedule of the Plant and Equipment	Frank Wenzel	23/09/2008
Not satisfactorily answered	RFI-00111		Siemens Transportation Systems	Track Support Stiffness (Please see also attached PDF-File!)	See attached RFI form and the attached PDF: ETN(TRW)TIE=T&ABC_055661 Track Support Stiffness_iss2_re	Klaus Dieker	26/09/2008
Not satisfactorily answered	RFI-00114		Siemens Transportation Systems	Ducts	ER Chap 18.2 is demanding 20% spare duct capacity of the maximum sized duct. Considering the heat	Robert Kraemer	02/10/2008
Not satisfactorily answered	RFI-00116		Siemens Transportation Systems	Noise & Vibration Protecting Measures	During a meeting on the requirements for noise & vibration we have been informed by Tie, that co	Robert Kraemer	07/10/2008
Not satisfactorily answered	RFI-00117		Siemens Transportation Systems	Gogar Depot OLE Sectioning	The designed sectioning is flexible but complex, there is an opportunity to simplify, reduced ca	Robert Kraemer	07/10/2008
Not satisfactorily answered	RFI-00124		Siemens Transportation Systems	Emergency Telephone Lines	In order to progress the Emergency Line requirements listed in the Employee Requirements can Tie pl	Robert Kraemer	13/10/2008
Not satisfactorily answered	RFI-00125		Siemens Transportation Systems	Depot PABX requirements	In order to progress the PABX design can Tie / Transdev, please specify the number of PABX exten	Robert Kraemer	20/10/2008
Open	RFI-00156		Bilfinger Berger Civil	Section 1B	Thus ducts from chamber at approx ch 210 running to and through Jane St have not been lowered an	Frank Young	20/11/2008
Open	RFI-00162		Bilfinger Berger Civil	Section 1B Roadworks	New kerb alignment approx ch 510 - 530 runs through new BT and C&W chambers. Please advise (see	Frank Young	15/12/2008
Not satisfactorily answered	RFI-00164		Siemens Transportation Systems	Depot PABX Emergency Lines	Further to the meeting held with members of Transdev (Keating / Parkes), Siemens (Smith) and the	Michael Wilken	17/12/2008
Open	RFI-00165		Bilfinger Berger Civil	Section 1B Roadworks - high water valve	At approx ch550 RHS a water valve (currently in footpath) which is in the new road construction wi	Frank Young	06/01/2009

CEC00971600_0128

Process Register

Company Bilfinger Berger Civil
Channel etn



Open	RFI-00166		Bilfinger Berger Civil	Section 1B Roadworks - Drawpit ch474	A new electricity drawpit at approx ch 474 RHS currently on the footway but to be within carriag	Frank Young	06/01/2009
Open	RFI-00167		Bilfinger Berger Civil	Section 1B Roadworks - BT chamber ch 490	Edge of BT chamber cover at approx ch 490 LHS lies on line of new kerb. (See attached photo). Plea	Frank Young	06/01/2009
Not satisfactorily answered	RFI-00168		Bilfinger Berger Civil	Section 1B Roadworks - ch 495 gas valve	A gas valve at approx ch 495 RHS will foul the new kerb line (see attached photo). Please advise	Frank Young	06/01/2009
Open	RFI-00169		Bilfinger Berger Civil	Section 1B Roadworks - C&W chamber north radius Crown Place	A new chamber for C&W on the north radius of Crown Place, approx ch110, is fouling the new kerblin	Frank Young	06/01/2009
Open	RFI-00170		Bilfinger Berger Civil	FW:Section 1B Roadworks - ch399 jointing chamber	raised by Young, Frank of Bilfinger Berger Civil on 07/01/2009----- New chambe	Frank Young	07/01/2009
Open	RFI-00171		Bilfinger Berger Civil	Section 1B Roadworks - FH ch405 RHS	New fire hydrant at ch 405 RHS currently in footway has only120mm cover to spindle but will be in	Frank Young	08/01/2009
Open	RFI-00172		Bilfinger Berger Civil	Section 1B Roadworks -FHs ch446	2 No fire hydrants (1 old, 1 new ?) currently on footway but to be in new carriageway only have 85	Frank Young	09/01/2009
Open	RFI-00173		Bilfinger Berger Civil	Section 1B Roadworks - ch506 FH	Fire hydrant currently in footway but to be in new carriageway only has 80mm cover from current po	Frank Young	09/01/2009
Open	RFI-00174		Bilfinger Berger Civil	Section 1B Roadworks ch 592 drawpit	Drawpit fouling new kerb line at ch592 LHS (see attached photo). Please advise	Frank Young	09/01/2009
Open	RFI-00180		Bilfinger Berger Civil	Section 1B Roadworks - ch 625 RHS BT chamber	The new BT chamber built at ch625 RHS fouls the new kerblin and ducts exiting to the road will ha	Frank Young	14/01/2009
Open	RFI-00181		Bilfinger Berger Civil	Section 1B Roadworks - ch 882 BT chamber	BT chamber at ch 882 RHS clashes with new kerblin and ducts exiting across carriageway will only	Frank Young	14/01/2009
Open	RFI-00182		Bilfinger Berger Civil	Section 1B Roadworks - ch710RHS water valve	Valve on new water main at ch 710 RHS lies on new kerblin (see attached photo). Please advise	Frank Young	14/01/2009
Open	RFI-00183		Bilfinger Berger Civil	Section 1B Roadworks - ch900 LHS valve	New valve on water main approx ch 900 LHS clashes with new kerblin (see attached photo). Please a	Frank Young	14/01/2009
Open	RFI-00184		Bilfinger Berger Civil	Section 1B Roadworks - ch 890 valve	New valve on water main approx ch 890 LHS clashes with new kerblin (see attached photo). Please a	Frank Young	14/01/2009
Open	RFI-00185		Bilfinger Berger Civil	Section 1B Roadworks - ch 210 LHS valve	Water valve at ch 210 LHS currently in footway but will be in new carriageway has only approx 120m	Frank Young	14/01/2009
Open	RFI-00186		Bilfinger Berger Civil	Section 1B Roadworks - ch 530 RHS drawpit	Existing chamber at approx ch 530 RHS clashes with new kerblin (see attached photos). Please advi	Frank Young	14/01/2009
Open	RFI-00188		Bilfinger Berger Civil	Section 1B Roadworks ch110602	Water valve/toby clashes with new kerblin at ch 110602 LHS (see attached photo). Please advise	Frank Young	20/01/2009
Open	RFI-00189		Bilfinger Berger Civil	Section 1B Roadworks ch110100	Water valve/toby clashes with new kerblin at ch 110100 (see attached photo)./ Please advise	Frank Young	20/01/2009

CEC00971600_0129

Process Register

Company Bilfinger Berger Civil
Channel etn



Open	RFI-00190		Bilfinger Berger Civil	Section 1B Roadworks	Water valve/toby at ch111106 LHS clashes with new kerbline (see attached photo). Please advise	Frank Young	20/01/2009
Open	RFI-00191		Bilfinger Berger Civil	Section 1B Roadworks ch111151	BT chamber at ch111151 LHS clashes with new kerbline (see attached photo). Please advise	Frank Young	20/01/2009
Open	RFI-00192		Bilfinger Berger Civil	Section 1B Roadworks ch111095	New fire hydrant and 2 valves clash with new kerbline at approx ch 111095 RHS (see attached photo)	Frank Young	20/01/2009
Open	RFI-00197		Bilfinger Berger Civil	Section 1B Roadworks ch 111150	New water mains at Leith Walk Railway Bridge are completely within pavement make up. Please advise	Frank Young	20/01/2009
Not satisfactorily answered	RFI-00203		Bilfinger Berger Civil	Section 1C - Princes Street -A removable Tram stop?	There is no stated requirement within "Schedule Part 2" the "Employers Requirements" for the Princes	Clifford Styles	05/02/2009
Open	RFI-00207		Bilfinger Berger Civil	SECTION 5A - HAYMARKET DEPOT	Further to RFI 176 – Haymarket Depot entrance existing utilities The answer to the above RFI is u	Holger Plate	03/03/2009
Open	RFI-00208		Bilfinger Berger Civil	SECTION 1B - SITE CLEARANCE	Further to RFI 177 – Section 1b Site Clearance The answer to the above RFI is unsatisfactory and	Holger Plate	03/03/2009
Open	RFI-00209		Bilfinger Berger Civil	SECTION 1B - SITE CLEARANCE	Further to RFI 178 – Section 1b Site Clearance The answer to the above RFI is unsatisfactory and	Holger Plate	03/03/2009
Open	RFI-00210		Bilfinger Berger Civil	SECTION 1B - SITE CLEARANCE	Further to RFI 179 – Section 1b Site Clearance The answer to the above RFI is unsatisfactory and	Holger Plate	03/03/2009
Open	RFI-00211		Bilfinger Berger Civil	Section 1B Roadworks	At approx ch 125 RHS - Casselbank St an old steel pipe has been connected to new BT ducting immedi	Frank Young	03/03/2009
Open	RFI-00213		Bilfinger Berger Civil	Section 7A - As Built Utility Information	Please provide as built utility information in Section 7A from Culvert 3 location to Airport.	Simon Nesbitt	03/04/2009
Open	RFI-00214		Siemens Transportation Systems	Are ambient noise sensors required at Tramstops?	During the Design Review meeting on Mon, 23rd March 2009 tie/Transdev commented on the Detailed De	Michael Wilken	06/04/2009
Open	RFI-00215		Siemens Transportation Systems	TRAMSTOP CABINET KEY SUITE SYSTEM INFORMATION	Can TIE please provide the following:- •Type of key required for Tramstop Cabinet lock to equip	Michael Wilken	06/04/2009
Open	RFI-00216		Siemens Transportation Systems	Postal address for Gogar depot and sub-station sites	In order to progress applications for radio license, BT circuit provision etc. Can Tie please su	Michael Wilken	06/04/2009
Open	RFI-00217		Siemens Transportation Systems	Radio system configuration	Further to the ORR Prelim design review and in particular the requirements for "radio to control c	Michael Wilken	06/04/2009
Open	RFI-00218		Siemens Transportation Systems	Ingliston Park and Ride existing CCTV cameras.	Section 35.9.1 of the ER (issue 4) states that "The ODN also needs to allow for 7 existing, plus t	Michael Wilken	06/04/2009
Open	RFI-00219		Siemens Transportation Systems	Facilities to be provided at emergency/backup control room?	Section 35.11.1 of the ER states "The ODN shall support the emergency relocation of Control Centre	Michael Wilken	06/04/2009

CEC00971600_0130

Process Register

Company Bilfinger Berger Civil
Channel etn



Open	RFI-00220		Siemens Transportation Systems	Location of emergency/backup control room?	Section 35.11.1 of the ER states "The ODN shall support the emergency relocation of Control Centre	Michael Wilken	06/04/2009
Open	RFI-00221		Siemens Transportation Systems	Which TVM alarms activate CCTV monitoring?	Section 35.10.6 of the Employer's Requirements (issue 4) states the following Ticket Vending Machi	Michael Wilken	06/04/2009
Open	RFI-00222		Siemens Transportation Systems	Lift operation at Murrayfield transop.	Section 35.8.1 of the ER (issue 4) states "Each Tramstop platform shall be equipped with at least o	Michael Wilken	06/04/2009

Bilfinger Berger – Siemens – CAF Consortium

10.6 Civil Works Procurement Schedule



Subcontract Procurement / Register Contract : Edinburgh Tram Network					PROGRAMME REQUIREMENTS										PROCESSES									
Enquiry Ref Number	Subcontract Trade	Section	Company	Prospective Companies	OS	Enquiry Needs Sent Out By (F74-3)	Status	Order Needs Placed By	Status	Letter of Intent Issued / Limited Order to Proceed	Required for Start on Site	Design Package Issued for Construction	F74-1 Subcontract Questionnaire	F519-1 Subcontract Questionnaire	F74-4 Preaward/Start Meeting	F74-5 Quality Plan	Authority to Place	CI 28.2 Approval	F74-9 Questionnaire Review	Order Issued	Order Back	F74-11 Bidder Form	F74-2 Performance Review	
1	Land Surveys (SW)	SW	Becker Geomatics Ltd	1	DG	n/a	✓	n/a	✓		n/a	n/a	✓		✓			n/a		✓	✓	✓		
2	Tree Felling / Advance Works (SW)	SW	W Laing	1	DG	n/a	✓	n/a	✓		n/a				✓			n/a		✓	✓	✓		
3	Site Clearance / Civils Package (7A)	7A	Farrans (Construction) Ltd	1	DG	n/a	✓	n/a	✓		n/a		✓	✓				n/a		✓		✓		
4	Setting Out Engineers / Advance Works	SW	Beattie Chalmers Ltd	1	DG	n/a	✓	n/a	✓		n/a		n/a					n/a		✓	✓	✓		
5	Demolition of Caley Alehouse	2A	John Graham (Dromore) Ltd	1	DG	n/a	✓	n/a	✓		16-Jun-08		✓	✓				n/a		✓		✓		
9	Existing Road Surveys	SW	Mouchel	1	DG	n/a	✓	n/a	✓		23-Jun-08		✓		✓			n/a		✓	✓	✓		
10	Erection of Temporary Trackside Fencing	5	Lumberjax Environmental	1	SJ		✓		✓		21-Jun-08					✓		n/a		✓	✓	✓		
11	Civils Package	7A/5C		1	Farrans	DG	16-Jun-08	✓	28-Jul-08		06-Aug-08	04-Aug-08						✓						
12	Civils Package	2A1D5A		1	John Graham (Dromore) Ltd	DG	23-Jun-08	✓	21-Jul-08			02-Mar-09												
16	Contiguous CFA Piling	5		1	Bachey, Stent	SJ	07-Jul-08	✓	18-Aug-08			01-Sep-08												
17	Temporary Works Design	SW	Tony Gee	1		TG	12-May-08	✓	23-Jun-08		30-Jun-08	n/a	✓	✓				n/a				✓		
18	Formwork, Rebar, Concrete	5		1	Expaned Ltd, Dunne Gp, Stephenson plus L Onlys	JMD	23-Jun-08	✓	21-Jul-08			18-Aug-08												
20	PC Beams	5	Banagher	1		TG	23-Jun-08	✓	20-Oct-08	✓		01-Dec-08												
21	Bridge Bearings	5		1		DG																		
24	Photography	SW	White House Studios	1		SK	04-Jun-08	✓	16-Jul-08		n/a	23-Jul-08	✓	✓	✓	n/a		n/a		✓				
25	Structural Steel	5	Fairfield Mabey	1		SK					26-Jun-08	01-Dec-08	28-Jul-08	✓										
26	Traffic Management (SW)	SW	Class One	1		TG		✓	22-Jul-08			05-Aug-08	✓	✓	✓	✓								
27	Timber Fencing	SW		1	G Walker, JKF, DE Fencing, Lumberjacks, Alter	TG		✓																
29	White lining and road markings	SW		1	Linemarkings, Markon	DG																		
30	Deck waterproofing & Surface Treatment	SW		1	Universal Sealants, Pitchmastic, Stirling Loyd	DG																		
31	Metal railings and handrailing	SW		1	DE Fencing, JKF	DG																		
34	Designers	SW	Parsons Brickerhoff	1		DG												n/a				✓		
38	Civils Package	6	Barr Ltd	1		DG	26-May-08	✓	07-Jul-08	✓	02-Jun-08	04-Aug-08	✓					✓		✓	✓			
42	Property Conditions Survey	SW		1	DM Hall / PT / DTZ	DG																		
44	Site Investigation Works	5	Raeburn	1		SJ	02-Jun-08	✓	30-Jun-08		n/a	07-Jul-08				✓				✓				
45	Civils Package	1B	Crummock	1		DG	04-Aug-08	✓	10-Oct-08		10-Sep-08	06-Oct-08	07-Jul-08	✓	✓	✓	✓	✓				✓		
46	Civils Package	1D	MacKenzie	1		DG	04-Aug-08	✓	27-Oct-08		17-Dec-08	05-Jan-09	04-Jul-08	✓	✓	✓	✓	✓	✓			✓		
48	Control Network Survey Check - Site Wide		L & M Surveys	1		SJ	03-Jul-08	✓	14-Jul-08			14-Jul-08						n/a		✓		✓		
49	Utility Diversions	SW		1	Core Construction, Clancy Docwra, Intuto	DG	14-Jul-08	✓																
53	Acoustic Monitoring	SW	RMP Acoustic Consultants	1		SK	n/a		20-Jul-08	✓		27-Jul-08	✓	✓	✓			n/a		✓	✓	✓		
55	Tree Felling Adjacent to NR Rail Network		W Laing	1		SJ	17-Jul-08	✓	11-Aug-08	✓	n/a	25-Aug-08				✓					✓	✓		
58	Ecologist	SW	JDC Ecology Ltd	1		SK									✓									
65	Supply of CRE	SW	Siemens TS	1		SK	n/a		n/a	✓	n/a	n/a	n/a	n/a	n/a	n/a		n/a	n/a	✓	✓			
70	Groundworks	5	Gallagher Goundworks	1		SK	25-Jul-08	✓	04-Aug-08	✓	n/a	11-Aug-08						n/a		✓	✓			
73	Edinburgh Park Hoarding	5	Rapid Hoard Ltd	1		SK	01-Aug-08	✓	15-Aug-08	✓	n/a	29-Aug-08						n/a		✓	✓	✓		
74	A8 Underpass	5	Expanded Piling Ltd	1		SJ	06-Aug-08	✓	03-Sep-08	✓	15-Sep-08	15-Sep-08	✓	✓	✓	✓								
77	Temporary Traffic Signals	SW	Beattie Chalmers Ltd	1		DG					n/a	02-Oct-08						n/a						
80	Welding Services		Andrew Turner	1		JA	n/a		19-Sep-08	✓	n/a	23-Sep-08	n/a	n/a	n/a	n/a		n/a	n/a	✓				
81	Edinburgh Park Structure	5	Expanded Structures Ltd	1		GA	03-Oct-08						✓		✓									
82	Japanese Knotweed Eradication	5	TCM Ltd	1		GA	16-Sep-08	✓	n/a	✓	30-Sep-08	20-Oct-08	✓	n/a	✓				✓	✓				
84	Site Clearance	5	D Methuen Tumstone Ltd	1		JT	n/a		15-Sep-08	✓	n/a	16-Sep-08		n/a	✓	n/a			n/a	✓	✓	✓		
85	Traffic Management		Faber Maunsell	1		SK	12-Sep-08	✓	08-Oct-08	✓	n/a	10-Oct-08		n/a			✓			✓	✓	✓		
86	Steel Foundations	S27	Steel Foundations Ltd	1		GA					14-Oct-08	15-Oct-08	✓	n/a	✓				✓			✓		



Subcontract Procurement / Register Contract : Edinburgh Tram Network				PROGRAMME REQUIREMENTS										PROCESSES									
ID	Description	Code	Contractor	Qty	Contractor Details	Code	Start	End	Start	End	Start	End	Start	End	Start	End	Start	End	Start	End			
87	Temporary Sheet Piling	S23	McGrattan Piling Ltd	1		DT	06-Oct-08	✓	20-Oct-08		05-Nov-08	20-Nov-08		✓	n/a	✓			✓		✓		
88	Civils Package	1A1		1	RJ McLeod, Barr Ltd, McKeen, Land Engineering, Malcom Group	SK	03-Oct-08	✓	14-Feb-09			01-Mar-09			n/a								
89	Civils Package	1A2		1	RJ McLeod, Barr Ltd, McKeen, Land Engineering, Malcom Group	SK	03-Oct-08	✓	28-Mar-09			12-Apr-09			n/a								
90	W1, S16, S17 - Structures	1A		1	Dunne, McKeen, Expanded	SK	03-Oct-08	✓	10-Nov-08			05-Jan-09			n/a								
91	Temporary Traffic Signals		Lochwynd	1		SK						12-Dec-08			n/a		✓	✓	✓	✓	✓		
95	Site Clearance	5B / 5C	MW Groundworks Ltd	1		JT	28-Nov-08	✓	12-Dec-08		n/a	22-Dec-08		✓	n/a	✓	n/a		✓	✓	✓		
96	Fencing to Consortium Office		Willaim Houston Landscaping	1		JT	19-Dec-08	✓	16-Jan-09		n/a			✓	n/a	n/a		✓	✓	✓	✓		
100	Temporary Traffic Signals	1	Siemens Traffic Controls	1		SK				09-Jan-09	10-Jan-09			n/a	n/a	n/a	n/a	✓	✓	n/a	✓		
101	Amendments to Existing Traffic Signals	1	Telent	1		SK	n/a		19-Jan-09		n/a	26-Jan-09					✓	n/a		✓	✓		
102	Amendments to Existing Traffic Signals	1	Peek	1		SK	n/a		19-Jan-09		n/a	26-Jan-09		✓	✓	n/a	✓	✓	n/a	✓	✓		
104	Civils Package	1C2		1	RJ McLeod, Barr Ltd, McKeen, Land Engineering, Malcom Group, WJ Harte										n/a								

CEC00971600_0134

10.7 Change Register



ETN INFRACO NOTIFICATION of tie CHANGE (INTC)
CONFIDENTIAL

Withdrawn/Superseded
Delay Only
Agreed/Change Order issued

Ref	Tie	tie Change Order TCO	Description	Date Notified	Date of further letters	Letter Ref	Agreed in Principle?	Compensation Event	Type	Change Type	Pricing Method	Priority	Value Estimate (€000)							Allocation of Cost		Section			
													€ Submitted (Euros if CAF)	CAF	Sub-total	OH & P	Prelims	Total	€ Agreed	€ Not Agreed	Psum or VE		Number		
													SDS	Bilfinger	Siemens	CAF	Sub-total	OH & P	Prelims	Total	€ Agreed	€ Not Agreed	Psum or VE	Number	See Notes
1(A)			The Issued for Construction (IFC) dates from the Design Delivery Programme have been entered into the Schedule Part 15 Programme and there are differences from the Base Case Assumption resulting in a Notified Departure - SECTION A	22/05/2008	SEE 1(D)	SEE 1(D)	Y		D	1	4		0	0	0	0	0	0	0	0	0	0	N/A		6
1(B)			The Issued for Construction (IFC) dates from the Design Delivery Programme have been entered into the Schedule Part 15 Programme and there are differences from the Base Case Assumption resulting in a Notified Departure - SECTION B	22/05/2008	SEE 1(D)	SEE 1(D)	Y		D	1	4		0	0	0	0	0	0	0	0	0	0	N/A		5,6,7
1(C)			The Issued for Construction (IFC) dates from the Design Delivery Programme have been entered into the Schedule Part 15 Programme and there are differences from the Base Case Assumption resulting in a Notified Departure - SECTION C	22/05/2008	SEE 1(D)	SEE 1(D)	Y		D	1	4		0	0	0	0	0	0	0	0	0	0	N/A		ALL
1(D)			The Issued for Construction (IFC) dates from the Design Delivery Programme have been entered into the Schedule Part 15 Programme and there are differences from the Base Case Assumption resulting in a Notified Departure - SECTION D	21/05/2008	20/05/08 21/05/08 29/05/08 11/06/08 11/06/08 12/06/08 12/06/08 12/06/08 13/06/08 27/06/08 04/07/08 09/07/08 25/07/08 21/08/08 28/08/08 09/09/08 10/09/08 17/09/08 22/10/08 25/11/08 04/12/08 18/12/08 18/12/08 07/01/09 19/02/09 18/03/09	BB Email-V31 IFC dates 25.1.201/TM/138 25.1.201/TM/133 tie-PRO.CORR.39 25.1.201/TM/151 25.1.201/TM/152 25.1.201/TM/162 tie-PRO.CORR.70/SBJT BB Email - BQ Ref tie-PRO.CORR.71/SBJT 25.1.201/TM/157 tie-PRO.CORR.022 BB/PM Email V26 v V36 25.1.201/TM/298 tie-INF.CORR.103 tie-INF.CORR.126 25.1.201/TM/445 25.1.201/GC/480 tie-INF.CORR.167 tie INF CORR 251 25.1.201/CHBB/1008 tie INF CORR 465 tie INF CORR 535 tie INF CORR 537 25.1.201/MRH/1247 25.1.201/HN/1644 tie INF CORR 1049	Y	D	1	4		0	3,109,422	3,298,375	550,000	6,957,797	Incl	Incl	6,957,797	0	6,957,797	N/A		ALL	
2			Instruction to proceed with The Hilton Hotel Car Park (Letter PRO Infraco.2110 dated 09/05/08) is work in respect of Undefined Provisional Sum Item 1 Accommodation Works, in Schedule Part.4 Appendix B Table 2	21/05/2008	12/05/08 29/05/08 06/06/08 11/06/08 11/06/08 23/06/08 27/06/08 18/12/08 07/01/09	tie-PRO Infraco.2110 25.1.201/TM/138 tie-PRO.CORR.39 BB Email - Pricing 25.1.201/TM/152 25.1.201/TM/157 tie-PRO.CORR.010 25.1.201/TM/185 tie INF CORR 537 25.1.201/MRH/1247	N	D	1	1,2,3		0	76,238	0	0	76,238	8,188	5,642	90,068	0	90,068	UPS	1	7	
3			Receipt of tie letter PRO Infraco.2106 dated 9 May 2008 instructing us to proceed with road surveys.	21/05/2008	12/05/08 23/05/08 29/05/08 30/05/08 05/06/08 11/06/08 11/06/08 13/06/08 17/06/08 18/12/08 07/01/09 24/03/09	tie-PRO Infraco.2106 CET-56260S 25.1.201/TM/138 25.1.201/TM/139 tie-PRO.CORR.39 25.1.201/TM/144 BB Email - Revised Costs 25.1.201/TM/152 25.1.201/TM/158 RFI 049 & tie-PRO.CORR.73 25.1.201/TM/170 tie INF CORR 537 25.1.201/MRH/1247 25.1.201/GC/1945	Y	D	1	3,4		0	69,187	0	0	69,187	6,919	21,586	97,692	0	97,692	N/A		1C,1D,2	
4			Received tie letter PRO Infraco.2107 dated 9 May 2008 instructing us to proceed with Russell Road Bridge in advance of receiving IFC drawings which is a notified departure and mandatory tie Change.	21/05/2008	12/05/08 29/05/08 11/06/08	tie-PRO Infraco.2107 25.1.201/TM/138 tie-PRO.CORR.39 25.1.201/TM/152	N/A	D					0	0	0	0	0	0	0	0	0	N/A		5A	
5			Received tie letter PRO Infraco.2108 dated 9 May 2008 instructing us to proceed with Haymarket Viaduct in advance of receiving IFC drawings which is a notified departure and mandatory tie Change.	21/05/2008	12/05/08 29/05/08 11/06/08 23/06/08 10/07/08	tie-PRO Infraco.2108 25.1.201/TM/138 tie-PRO.CORR.39 25.1.201/TM/152 25.1.201/TM/176 SDS-VLE90130-07-LET-00352	N/A	D					0	0	0	0	0	0	0	0	0	N/A		2A	
6			Received tie letter PRO Infraco.2109 dated 9 May 2008 instructing us to proceed with Gogarburn Bridge in advance of receiving IFC drawings (read as Surcharge subject to tie confirmation)	21/05/2008	09/05/08 12/05/08 29/05/08 11/06/08 27/08/08 17/09/08	tie ref TBC (J.McEwan) tie-PRO Infraco.2109 25.1.201/TM/138 tie-PRO.CORR.39 25.1.201/TM/152 25.1.201/TM/441 tie INF CORR 163	N/A	D					0	0	0	0	0	0	0	0	0	N/A		7	
7		17	tie Representatives request for a hard standing at Haymarket Yards.	23/05/2008	06/05/08 02/06/08 11/06/08 13/06/08 27/06/08 29/10/08 06/11/08 24/11/08 17/12/08 18/12/08 07/01/09 29/01/09	BB/Graham - Email re quote tie-PRO.CORR.40 25.1.201/TM/153 tie-PRO.CORR.72 25.1.201/TM/189 25.1.201/GC/794 tie INF CORR 341 25.1.201/GC/997 tie INF CORR 540 tie INF CORR 537 25.1.201/MRH/1247 tie INF CORR 654	Y	D	1	3,4		0	750	0	0	750	75	56	881	881	0	N/A		2A	

CEC00971600_0136



ETN INFRA CO NOTIFICATION of tie CHANGE (INTC)
CONFIDENTIAL

Withdrawn/Superseded
Delay Only
Agreed/Change Order issued

Ref	Tie	tie Change Order TCO	Description	Date Notified	Date of further letters	Letter Ref	Agreed in Principle?	Compensation Event	Type	Change Type	Pricing Method	Priority	Value Estimate (€000)							Allocation of Cost		Section		
													€ Submitted (Euros if CAF)	Sub-total	OH & P	Prelims	Total	€ Agreed	€ Not Agreed	Psum or VE	Number			
8			Various Drawing Revisions since the Base Date Design information amending the Design prepared by the SDS Provider.	28/05/2008	21/05/08 21/05/08 23/05/08 02/06/08 11/06/08 13/06/08 27/06/08	25.1.2017/M/136 tie-PRO CORR 39 25.1.2017/M/159 25.1.2017/M/143 tie-PRO CORR 40 25.1.2017/M/153 tie-PRO CORR 72 25.1.2017/M/189	N/A	N/A	D				0	0	0	0	0	0	0	0	0	0	N/A	ALL
9			The GUARD archeological dig currently ongoing in the area of Gogar Tramstop is delaying and disrupting the Infraco in accessing Gogar Landfill and establishment of the site offices for Section 7	28/05/2008	02/06/08 04/06/08 11/06/08 13/06/08 27/06/08	25.1.2017/M/143 tie-PRO CORR 40 RFI 030 25.1.2017/M/153 tie-PRO CORR 72 25.1.2017/M/189	N/A		D		4		0	0	0	0	0	0	0	0	0	0	N/A	7
10			The GUARD archeological dig currently ongoing in the area of Gogar Tramstop is delaying and disrupting the Infraco in accessing and establishment of the site offices for Section 5C	28/05/2008	02/06/08 04/06/08 11/06/08 13/06/08 27/06/08	25.1.2017/M/143 tie-PRO CORR 40 RFI 029 25.1.2017/M/153 tie-PRO CORR 72 25.1.2017/M/189	N/A		D		4		0	0	0	0	0	0	0	0	0	0	N/A	5C
11			The GUARD archeological dig currently ongoing in the area of Gogar Tramstop is delaying and disrupting the Infraco in accessing and establishment of the site offices for Section 5C	28/05/2008	02/06/08 11/06/08 13/06/08 27/06/08 22/09/08 03/10/08	25.1.2017/M/143 tie-PRO CORR 40 RFI 029 25.1.2017/M/153 tie-PRO CORR 72 25.1.2017/M/189 tie-INV CORR 175 Email T2-BB - Re Ducts Estimate	N/A		D		4		0	0	0	0	0	0	0	0	0	0	N/A	5C
12			The GUARD archeological dig currently ongoing in the area of Gogar Tramstop is causing damage to the tram corridor between Ch 710000 - 710300. This area will need to be made good once the topsoil removal is complete potentially delaying and disrupting the Infraco Works.	28/05/2008	02/06/08 04/06/08 11/06/08 13/06/08 27/06/08 27/06/08 11/07/08 15/07/08 29/07/08 13/06/08 04/06/08 25/09/08	25.1.2017/M/143 tie-PRO CORR 40 RFI 031 25.1.2017/M/153 tie-PRO CORR 72 25.1.210/TM/189 BB Email Earthworks Outline BB/te - Email re City Point Meeting BB Email Citypoint Meeting Notes tie-DEL HSQE 1663 RFI 045 RFI 032 25.1.2017/O/529	N/A		D		4		0	0	0	0	0	0	0	0	0	0	N/A	7
13			Notified Departure in accordance with paragraph 3.4.5.1 and 3.5 Schedule Part 4 due to CEC Planning consents delay as communicated to tie by SDS by email on 21-05-08 in connection with Roseburn Terrace Bridge, Tramstop and Retaining Walls A and B between 3 April and 28 April 2006. Specifically but is an ongoing problem throughout the Infraco Contract.	28/05/2008	21/05/08 02/06/08 11/06/08	BB/te-Email Application Process 25.1.2017/M/143 tie-PRO CORR 40 25.1.2017/M/153	N/A	N/A	D		4		0	0	0	0	0	0	0	0	0	0	N/A	ALL
14			Notified Departure in accordance with paragraph 3.4.5.1 and 3.5 Schedule Part 4 due to the MUDFA Contractor not having completed the 800mm dia Water Main diversion in the Depot area in accordance with the requirements of the Programme causing delay and disruption to the Infraco's intended sequence.	28/05/2008	02/06/08 11/06/08 13/06/08 27/06/08 02/07/08 02/12/08 18/12/08 05/01/09 20/01/09 26/01/09 04/02/09 06/02/09	25.1.2017/M/143 tie-PRO CORR 40 25.1.2017/M/153 tie-PRO CORR 72 25.1.2017/M/189 25.1.2017/M/205 25.1.2017/MRH/1076 tie INF CORR 499 25.1.2017/MRH/1230 tie INF CORR 597 25.1.2017/MRH/1394 tie INF CORR 662 25.1.2017/MRH/1506	N/A	Y	D		4		0	0	0	0	0	0	0	0	0	0	N/A	6
15			Notified Departure in accordance with paragraph 3.4.5.1 and 3.5 Schedule Part 4 due to the MUDFA Contractor not having completed the 250mm dia Water Main diversion in the Depot area in accordance with the requirements of the Programme causing delay and disruption to the Infraco's intended sequence.	28/05/2008	02/06/08 11/06/08 02/12/08 18/12/08 05/01/09 20/01/09 26/01/09 04/02/09 06/02/09 06/03/09 16/03/09	25.1.2017/M/143 tie-PRO CORR 40 25.1.2017/M/153 25.1.2017/MRH/1076 tie INF CORR 499 25.1.2017/MRH/1230 tie INF CORR 597 25.1.2017/MRH/1395 tie INF CORR 663 25.1.2017/MRH/1505 tie INF CORR 932 25.1.2017/MRH/1938	N/A	Y	D		4		0	0	0	0	0	0	0	0	0	0	N/A	6
16			Notified Departure in accordance with paragraph 3.4.5.1 and 3.5 Schedule Part 4 due to the MUDFA Contractor not having completed the 1500mm dia Sewer diversion in the Depot area in accordance with the requirements of the Programme causing delay and disruption to the Infraco's intended sequence.	28/05/2008	02/06/08 11/06/08 13/06/08 27/06/08 26/09/08 09/10/08 02/12/08 18/12/08 05/01/09 20/01/09 26/01/09 04/02/09 06/02/09 06/03/09 26/03/09	25.1.2017/M/143 tie-PRO CORR 40 25.1.2017/M/153 tie-PRO CORR 72 25.1.2017/M/189 25.1.2017/SR/539 tie INF CORR 209 25.1.2017/MRH/1076 tie INF CORR 499 25.1.2017/MRH/1230 tie INF CORR 597 25.1.2017/MRH/1396 tie INF CORR 664 25.1.2017/MRH/1504 tie INF CORR 933 25.1.2017/MRH/—	N/A	Y	D		4		0	0	0	0	0	0	0	0	0	0	N/A	6

CEC00971600_0137



ETN INFRACTION NOTIFICATION OF THE CHANGE (INTC)
CONFIDENTIAL

Ref.	The	The Change Order	Description	Date Notified	Date of further letters	Letter Ref	Agreed in Principle?	Compensation Event	Type	Change Type	Pricing Method	Priority	Value Estimate (€)					Allocation of Cost		Section						
													£ Submitter (Euros IFC/CAF)	£ Not Agreed	£ Agreed	£ Not Agreed	Number	Paum or VE								
													Subtotal	Ort & P	Prelims	Total			See Notes							
24		TOD	Instruction to proceed with Varsity House Access Road per IFC	09/05/2008	17/06/08 24/11/08 12/01/09 28/04/08 01/05/08	Re-DEL CORR 176 25.1.201/TH/169 Re-INF CORR 589 25.1.201/TH/169 Re-DEL CORR 176 25.1.201/TH/169 Formal INTC from BBS	N/A		M	1	1,2,3		0	0	0	0	0	0	N/A	0	0	0	0	0	0	2A
25			Instruction to proceed with the demolition of Caley Aile House per IFC	09/05/2008	01/07/08 30/07/08 19/09/08 02/10/08 16/12/08	Re-DEL CORR 176 25.1.201/TH/169 Re-DEL CORR 176 25.1.201/TH/169 Formal INTC from BBS	N/A		M	1	1,2,3		0	0	0	0	0	0	N/A	0	0	0	0	0	0	2A
26			Delay to issue of Priced Place (Bachy/13) to CEC for Prior Approval notified by SDS in attached letter ULE90130-01-LET-00672 dated 4 June 2008 in accordance with Schedule Part 4 paragraph 3.4.5.4	17/06/2008	24/06/08 01/07/08 30/07/08 19/09/08 02/10/08 16/12/08	Re-PO CORR 104A 25.1.201/TH/169 Re-PO CORR 104A 25.1.201/TH/169 Re-INF CORR 169 25.1.201/TH/169 Re-DEL CORR 176 25.1.201/TH/169 Formal INTC from BBS	N/A		D	1	1,2,3,4		0	0	0	0	0	N/A	0	0	0	0	0	0	1	
27			Delay to issue For Construction (FC) Submissions - Section 10 (due to changed approval periods notified by SDS in attached letter ULE90130-01-LET-00671 dated 4 June 2008 in accordance with Schedule Part 4 paragraph 3.4.5.1.	17/06/2008	27/06/08 01/07/08 30/07/08 19/09/08 02/10/08 16/12/08	Re-PO CORR 104A 25.1.201/TH/169 Re-PO CORR 104A 25.1.201/TH/169 Re-INF CORR 169 25.1.201/TH/169 Re-DEL CORR 176 25.1.201/TH/169 Formal INTC from BBS	N/A		M	1	1,2,3,4		0	0	0	0	0	N/A	0	0	0	0	0	0	1	
28			Delay to issue For Construction (FC) Submissions - Section 10 (due to changed approval periods notified by SDS in attached letter ULE90130-01-LET-00670 dated 4 June 2008 in accordance with Schedule Part 4 paragraph 3.4.5.1).	17/06/2008	27/06/08 01/07/08 30/07/08 19/09/08 02/10/08 16/12/08	Re-PO CORR 104A 25.1.201/TH/169 Re-PO CORR 104A 25.1.201/TH/169 Re-INF CORR 169 25.1.201/TH/169 Re-DEL CORR 176 25.1.201/TH/169 Formal INTC from BBS	N/A		M	1	1,2,3,4		0	0	0	0	0	N/A	0	0	0	0	0	0	1	
29			Delay to Haymarket Station Car Park Access Road due additional and revisions initiated by the notified by SDS in their response to attached Technical Query BBS 006 dated 5 June 2008 in accordance with Schedule Part 4 paragraph 3.4.5.4.	17/06/2008	27/06/08 01/07/08 30/07/08 19/09/08 02/10/08 16/12/08	Re-PO CORR 104A 25.1.201/TH/169 Re-PO CORR 104A 25.1.201/TH/169 Re-INF CORR 169 25.1.201/TH/169 Re-DEL CORR 176 25.1.201/TH/169 Formal INTC from BBS	N/A		M	1	1,2,3,4		0	0	0	0	0	N/A	0	0	0	0	0	0	2A	
30			Instruction to SDS to accelerate the delivery of IFC to meet the BBS programme as SDS Letter 00331 in accordance with Schedule Part 4 paragraph 3.4.5.5.	17/06/2008	22/05/08	SDS-ULE90130-SW-LET-01277 25.1.201/TH/169 SDS-ULE90130-SW-LET-01277 25.1.201/TH/169 Re-PO CORR 104A 25.1.201/TH/169 Re-PO CORR 104A 25.1.201/TH/169 Re-INF CORR 169 25.1.201/TH/169 Re-DEL CORR 176 25.1.201/TH/169 Formal INTC from BBS	N		M	1	1,2,3,4		17,931	0	0	0	0	N/A	0	0	0	0	0	0	All	
31			Instruction to SDS to provide a single handrail to Telford Road Bridge as SDS Letter 00237 in accordance with Schedule Part 4 paragraph 3.4.1.3.	17/06/2008	27/06/08 01/07/08 30/07/08 19/09/08 02/10/08 16/12/08	Re-PO CORR 104A 25.1.201/TH/169 Re-PO CORR 104A 25.1.201/TH/169 Re-INF CORR 169 25.1.201/TH/169 Re-DEL CORR 176 25.1.201/TH/169 Formal INTC from BBS	N/A		M	1	1,2,3,4		0	0	0	0	0	N/A	0	0	0	0	0	0	3	
32			CEC failure to approve within agreed timescales as SDS Letter 00267 in accordance with Schedule Part 4 paragraph 3.4.5.1.	17/06/2008	27/06/08 01/07/08 30/07/08 19/09/08 02/10/08 16/12/08	Re-PO CORR 104A 25.1.201/TH/169 Re-PO CORR 104A 25.1.201/TH/169 Re-INF CORR 169 25.1.201/TH/169 Re-DEL CORR 176 25.1.201/TH/169 Formal INTC from BBS	N/A		M	1	1,2,3,4		0	0	0	0	0	N/A	0	0	0	0	0	0	5	
33			Network Rail failure to approve within agreed timescales as SDS Letter 00266 in accordance with Schedule Part 4 paragraph 3.4.2.7.	17/06/2008	27/06/08 01/07/08 30/07/08 19/09/08 02/10/08 16/12/08	Re-PO CORR 104A 25.1.201/TH/169 Re-PO CORR 104A 25.1.201/TH/169 Re-INF CORR 169 25.1.201/TH/169 Re-DEL CORR 176 25.1.201/TH/169 Formal INTC from BBS	N/A		M	1	1,2,3,4		0	0	0	0	0	N/A	0	0	0	0	0	0	5	
34			New Requirements introduced by Public Realm Design Workbook as SDS Letter 00648 in accordance with Schedule Part 4 paragraph 3.4.4.3	17/06/2008	27/06/08 01/07/08 30/07/08 19/09/08 02/10/08 16/12/08	Re-PO CORR 104A 25.1.201/TH/169 Re-PO CORR 104A 25.1.201/TH/169 Re-INF CORR 169 25.1.201/TH/169 Re-DEL CORR 176 25.1.201/TH/169 Formal INTC from BBS	N		M	1	1,2,3,4		0	0	0	0	0	N/A	0	0	0	0	0	0	1	



ETN INFRA CO NOTIFICATION of tie CHANGE (INTC)
CONFIDENTIAL

Withdrawn/Superseded
Delay Only
Agreed/Change Order issued

Ref	Tie	Change Order TOC	Description	Date Notified	Date of further letters	Letter Ref	Agreed in Principle?	Compensation Event	Type	Change Type	Pricing Method	Priority	Value Estimate (€000)							Allocation of Cost		Section			
													€ Submitted (Euros if CAF)	CAF	Sub-total	OH & P	Prelims	Total	€ Agreed	€ Not Agreed	Psum or VE		Number		
43			Delay and Disruption due to amended design for Shandwick Place Lighting as SDS Letter 00669 in accordance with Schedule Part 4 paragraph 3.4.1.3	17/06/2008	27/06/08 01/07/08 14/07/08(19/06/08) 24/07/08 28/07/08 30/07/08 08/08/08 19/09/08 19/09/08 02/10/08 16/12/08 07/01/09 10/02/09	25.1.201/TM/169 tie-PD CORR 104A 25.1.201/JH/199 25.1.201/JH/255(inc SDS-ULE90130-01-LET-00692) tie-INF CORR 054 SDS-ULE90130-SW-LET-01130 25.1.201/JH/326 tie-INF CORR 087 SDS-ULE90130-SW-LET-01202 tie-INF CORR 169 25.1.201/JH/593 25.1.201/JH/1181 SDS-ULE90130-SW-LET-01330 SDS-ULE90130-SW-LET-01379	N		M	1	1,2,3,4	0	0	0	0	0	0	0	0	0	0	0	N/A		10
44	1		TNC001 - Amendments to Ocean Terminal Layout	28/05/2008	11/06/08 13/06/08 26/06/08 02/07/08 28/07/08 01/08/08 16/09/08 19/09/08 23/09/08 26/09/08 16/10/08 17/11/08 20/11/08 04/12/08 12/12/08 18/12/08 18/12/08 05/01/09 07/01/09	tie-TN C001 25.1.201/TM/151 tie-INF CORR 002 25.1.201/GC/181 25.1.201/TM/204 SDS-ULE90130-SW-LET-01130 25.1.201/GC/342 tie INF CORR 154 SDS-ULE90130-SW-LET-01202 tie INF CORR 185 25.1.201/CHBB/546 tie INF CORR 244 tie INF CORR 387 25.1.201/MRH/973 25.1.201/GC/1087 tie INF CORR 508 tie INF CORR 537 25.1.201/MRH/1209 tie INF CORR 553 25.1.201/MRH/1247	Y		I	1	1	0	117,265	0	0	117,265	incl	8,677	125,932	-25,201	151,133	DPS	13	1A	
45			Delay and Disruption due to amended design for A25920 - Balfour Street Tram Stop as SDS Letter 00701 in accordance with Schedule Part 4 paragraph 3.4.1.3	04/07/2008	04/06/08 30/06/08 23/07/08 (22/07/08) 16/12/08	SDS-ULE90130-01-LET-00670 SDS-ULE90130-01-LET-00701 25.1.201/JH/217 25.1.201/JH/290 (inc Tie INF CORR 045) 25.1.201/JH/1181	N/A		M				0	0	0	0	0	0	0	0	0	0	N/A		1B
46			Delay and Disruption due to amended design for SDS250040 1B Roads, Street Lighting, Landscaping and Drainage as SDS Letter 00701 in accordance with Schedule Part 4 paragraph 3.4.1.3	04/07/2008	04/06/08 30/06/08 01/07/08 11/07/08 22/07/08 23/07/08 23/07/08 16/12/08	SDS-ULE90130-01-LET-00670 SDS-ULE90130-01-LET-00701 SDS-ULE90130-01-LET-00707 25.1.201/JH/217 SDS-ELE90130-01-LET-00732 tie-INF CORR 045 25.1.201/JH/287 25.1.201/JH/290 25.1.201/JH/1181	N/A		M				0	0	0	0	0	0	0	0	0	0	N/A		1B
47			Delay and Disruption due to amended design for SDS24720 - Issue Roads Design to Roads Authority for Approval Section 1A1, SDS87870 - Issue Roads Design to Roads Authority for Approval Section 1A2, SDS88010 - Issue Roads Design to Roads Authority for Approval Section 1A4 as SDS Letter 00703 in accordance with Schedule Part 4 paragraph 3.4.1.3	04/07/2008	04/06/08 30/06/08 30/06/08 11/07/08 22/07/08 23/07/08 16/12/08	SDS-ULE90130-01-LET-00670 SDS-ULE90130-01-LET-00701 SDS-ULE90130-01-LET-00703 25.1.201/JH/217 SDS-ULE90130-01-LET-00721 tie-INF CORR 045 25.1.201/JH/290 25.1.201/JH/1181	N/A		M				0	0	0	0	0	0	0	0	0	0	N/A		1A
48		15	Additional TRO Drawings as SDS letter ref ULE90130-SW-LET-01100 dated 4th July - in conjunction with SDS Agreement Schedule Clause 15, and Schedule 4 Clause 3.5. 5.4	16/07/2008	04/07/08 17/11/08 18/12/08 07/01/09 22/01/09 03/02/09 06/02/09 09/02/09	SDS-ULE90130-SW-LET-01100 25.1.201/JH/288 25.1.201/JH/945 tie INF CORR 537 25.1.201/MRH/1247 tie INF CORR 629 SDS-ULE90130-SW-LET-01367 25.1.201/JH/1493 25.1.201/BCC/1529	Y		D	1	3	3,404	0	0	0	3,404	340	252	3,996	3,550	446	N/A		All	
49		6	TNC 6 - Bernard Street Public Realm Works	24/06/2008	08/04/08 27/05/08 29/05/08 12/06/08 12/06/08 12/06/08 30/07/08 28/08/08 18/09/08 19/09/08 22/09/08 22/09/08 30/09/08 21/10/08 23/10/08 30/10/08 29/10/08 24/11/08 24/11/08 26/11/08 08/12/08 10/12/08 18/12/08 07/01/09	BB/tie-Email-Bernard St Layout BB/tie-Email - Tramstop SDS-ULE90130-01-LET-00645 Email BB/CEC - Prior App Sub SDS-ULE90130-01-LET-00685 BB/tie-Email Paving tie-INF CORR 009 25.1.201/L/324 tie-INF CORR 121 25.1.201/L/485 Email BB-Crummock-paving SDS-ULE90130-01-LET-00813 tie INF CORR 177 25.1.201/L/550 e-mail Little (Programme) 25.1.201/L/760 25.1.201/JH/805 tie INF CORR 278 25.1.201/L/996 tie INF CORR 409 25.1.201/MRH/1016 tie INF CORR 464 25.1.201/L/1126 tie INF CORR 537 25.1.201/MRH/1247	Y		I	4	1,2,8,3	0	1,046,220	0	0	1,046,220	incl	178,465	1,224,685	720,356	504,329	N/A			1A
50		22	Various Traffic Signal requirements tie letter INF_CORR 038 16/7/8	16/07/2008	07/02/08 18/07/08 07/08/08 08/09/08 24/09/08 18/12/08 07/01/09 11/03/09	25.1.201/TM/100 tie-INF CORR 038 ETN(BSC)TIE & ABC tie INF CORR 081 ETN(BSC)TIE&CC&ABC#50039 tie INF CORR 183 tie INF CORR 537 25.1.201/MRH/1247 tie INF CORR 640	Y		I	1		0	0	24,558	0	24,558	4,175	1,817	30,550	30,550	0	N/A		1	

CEC00971600_0141



ETN INFRACO NOTIFICATION of tie CHANGE (INTC)
CONFIDENTIAL

Withdrawn/Superseded
Delay Only
Agreed/Change Order issued

Ref	Tie	Tie Change Order TCO	Description	Date Notified	Date of further letters	Letter Ref	Agreed in Principle?	Compensation Event	Type	Change Type	Pricing Method	Priority	Value Estimate (€000)						Allocation of Cost		Section		
													€ Submitted (Euros if CAF)	Sub-total	OH & P	Prelims	Total	€ Agreed	€ Not Agreed	Psum or VE		Number	
51	2	6	TN C002 : Utilities diversions & associated works deemed most suitable for inclusion with Infraco works rather than MUDFA works. Issued with drawings & schedule. Section 5a.	06/06/2008	27/06/08 23/07/08 28/07/08 07/08/08 14/08/08 20/08/08 21/08/08 17/09/08 17/09/08 08/10/08 08/10/08 09/10/08 09/10/08 16/10/08 22/10/08 29/10/08 17/11/08 20/11/08 28/11/08 03/12/08 10/12/08 12/12/08 18/12/08 18/12/08 05/01/09 20/01/09 26/01/09 06/03/09 16/03/09	tie-PRO CORR 48 25.1.201/GC/181 25.1.201/JH/289 25.1.201/L/307 tie-INF CORR 068 25.1.201/TM/374 25.1.201/L/386 25.1.201/L/393 tie-INF CORR 158 tie-INF CORR 159 e-mail Infraco-SDS (MRH) 25.1.201/L/638 25.1.201/L/648 25.1.201/L/654 tie INF CORR 244 25.1.201/L/748 tie INF CORR 281 tie INF CORR 387 25.1.201/MRH/973 25.1.201/MRH/1040 tie INF CORR 451 25.1.201/MRH/1114 tie INF CORR 508 25.1.201/MRH/1209 tie INF CORR 489 25.1.201/L/1232 tie INF CORR 606 25.1.201/MRH/1397 tie INF CORR 663 25.1.201/MRH/1940	Y	Y	M	1	3	0	60,439	0	0	60,439	incl	4,473	64,912	64,912	0	N/A	5A
52	3	7	TN C003 : Utilities diversions & associated works deemed most suitable for inclusion with Infraco works rather than MUDFA works. Issued with drawings & schedule. Section 5b.	06/06/2008	11/07/08 23/07/08 28/07/08 20/08/08 21/08/08 09/09/08 17/09/08 08/10/08 16/10/08 27/10/08 30/10/08 17/11/08 20/11/08 20/11/08 28/11/08 03/12/08 10/12/08 12/12/08 18/12/08 18/12/08 05/01/09 20/01/09 26/01/09 06/03/09 16/03/09	tie-PRO CORR 48 SDS-VLE90130-01-LET-00721 25.1.201/JH/289 25.1.201/L/308 25.1.201/L/386 25.1.201/L/393 25.1.201/JH/469 tie INF CORR 158 e-mail Infraco-SDS (MRH) tie INF CORR 244 tie INF CORR 275 25.1.201/L/811 tie INF CORR 387 25.1.201/MRH/973 tie INF CORR 416 25.1.201/MRH/1041 tie INF CORR 453 25.1.201/MRH/1115 tie INF CORR 508 25.1.201/MRH/1209 tie INF CORR 490 25/1201/L/1231 tie INF CORR 607 25.1.201/MRH/1392 tie INF CORR 670 25.1.201/MRH/1939	Y	Y	M	1	3	0	70,478	0	0	70,478	incl	5,215	75,694	75,694	0	N/A	5B
53	4	3	TN C004 : Utilities diversions & associated works deemed most suitable for inclusion with Infraco works rather than MUDFA works. Issued with drawings & schedule. Section 5c.	06/06/2008	07/07/08 23/07/08 28/07/08 05/08/08 20/08/08 21/08/08 22/08/08 08/09/08 09/09/08 16/09/08 17/09/08 02/10/08 08/10/08 10/10/08 16/10/08 31/10/08 17/11/08 20/11/08 28/11/08 12/12/08 12/12/08 16/12/08 18/12/08 18/12/08 07/01/09 07/01/09 20/01/09 21/01/09 20/01/09 20/01/09 26/01/09	tie-PRO CORR 48 SDS-VLE90130-01-LET-00722 25.1.201/JH/289 25.1.201/L/309 tie-INF CORR 068 25.1.201/L/386 25.1.201/L/393 25.1.201/JH/400 Reservation Form Lochside House 21.1.201/JH/469 tie-INF CORR 141 tie INF CORR 158 Email BB> T cost of BT diversion. e-mail Infraco-SDS (MRH) tie INF CORR 211 tie INF CORR 244 25.1.201/L/821 tie INF CORR 387 25.1.201/MRH/973 25.1.201/MRH/1042 tie INF CORR 492 tie INF CORR 508 25.1.201/MRH/1177 tie INF CORR 537 25.1.201/MRH/1209 25.1.201/MRH/1247 tie INF CORR 550 25.1.201/L/1314 25.1.201/L/1315 tie INF CORR 617 tie INF CORR 588 25.1.201/MRH/1390	Y	Y	M	1	3	0	109,631	0	0	109,631	9,068	8,361	127,059	88,723	93,337	N/A	5C
54	7		TN C007 : St Andrew Square Public Realm Works as CEC specification [Draft]. Site forming extended area over Infraco contract. Issued with drawings & Specification Volume 2 Part 7.	24/06/2008	15/07/08 28/07/08 31/07/08 05/08/08 01/09/08 22/09/08 25/09/08 30/10/08 17/12/08 18/12/08 07/01/09	tie-INF CORR 009 BB/tie- Email Estimate Inclusions 25.1.201/L/310 25.1.201/L/355 tie-INF CORR 071 tie-INF CORR 130 Quote - Stonepave Email Siemens/BB Re Programme E-mails tie-BBSC-tie tie INF CORR 540 tie INF CORR 537 25.1.201/MRH/1247	Y		D	1	3	420,000	8,860,391	0	0	9,280,391	incl	654,047	9,934,438	4,170,130	5,764,308	N/A	1C

CEC00971600_0142



ETN INFRACO NOTIFICATION of the CHANGE (INTC)
CONFIDENTIAL

Withdrawn/Superseded
Delay Only
Agreed/Change Order issued

Ref	Tie	Change Order TCO	Description	Date Notified	Date of further letters	Letter Ref	Agreed in Principle?	Compensation Event	Type	Change Type	Pricing Method	Priority	Value Estimate (€000)							Allocation of Cost		Section			
													€ Submitted (Euros if CAF)	Sub-total	OH & P	Prelims	Total	€ Agreed	€ Not Agreed	Psum or VE	Number				
55			Delay and Disruption due to late approval by CEC of SDS27980 -3C Roads, Street Lighting, Landscaping as SDS Letter 00296 dated 8th July 2008 and in accordance with Schedule Part 4 paragraph 3.4.1.3	29/07/2008		25.1.201/JH/319	N/A		M				0	0	0	0	0	0	0	0	0	N/A		3	
56			Delay and Disruption by CEC due to late registering Section 1A Batch 1/08 (Foot of the walk tramstop and associated line of route) as SDS Letter 00721 dated 11th July 2008 and in accordance with Schedule Part 4 paragraph 3.4.1.3	29/07/2008	11/07/08 02/09/08	SDS-ULE90130-01-LET-00721 25.1.201/JH/319 SDS-ULE90130-01-LET-00783	N/A		M				0	0	0	0	0	0	0	0	0	N/A		1A	
57			Delay and Disruption due to late approval by CEC of Section 1D as SDS Letter 00722 dated 7th July 2008 and in accordance with Schedule Part 4 paragraph 3.4.1.3	29/07/2008		25.1.201/JH/319	N/A		M				0	0	0	0	0	0	0	0	0	N/A		1D	
58			Delay and Disruption due to notification from CEC with respect to road safety Auditors comments for Haymarket Area of Section 1D as SDS Letter 00733 dated 11th July 2008 and in accordance with Schedule Part 4 paragraph 3.4.1.3	29/07/2008		25.1.201/JH/319	N/A		M	1	1,4		0	0	0	0	0	0	0	0	0	N/A		1D	
59	5	5	Notified Departure in accordance with 3.4.37 and 3.5 Schedule Part 4 due to the Asbestos Survey carried out by tie and the presence of Asbestos in Plots 75, 77, 92, 103, 130 & 150 causing delay and disruption to the Infraco's intended programme and method of work.	31/07/2008	11/09/08 21/10/08 27/10/08 28/10/08 30/10/08 06/11/08	25.1.201/L/337 Email BB/tie - Hunter Demolition Quote E-mail BBSC-tie tie INF CORR 274 25.1.201/L/781 tie INF CORR 305 tie INF CORR 333	Y		M	1	4		0	22,200	0	0	22,200	2,220	1,807	26,227	26,048	179	N/A		2A,5
60			Diversion of Existing Sewer at Gogarburn Bridge due to conflict with the existing 300mm dia combined sewer with the Gogarburn Bridge concrete piling potentially causing delay and disruption to the Infraco's intended sequence.	24/07/2008	06/09/08 09/09/08 11/09/08 25/09/08 09/09/08 16/09/08 19/09/08 26/09/08 24/09/08 30/09/08 02/10/08 03/10/08 10/10/08 29/10/08 31/10/08 05/11/08 18/12/08 07/01/09 07/01/09	tie-INF CORR 053 SDS-ULE90130-07-LET-00360 25.1.201/GC/363 ETN(BSC)TIE&ABC#050009 tie-INF CORR 118 25.1.201/TM/471 tie-INF CORR 162 25.1.5201/CO/510 25.1.201/JH/542 tie INF CORR 182 tie INF CORR 194 25.1.201/JH/582 Email BB>T - Revised Estimate tie INF CORR 217 e-mail BBSC - tie 25.1.201/JH/815 e-mail BBSC - tie tie INF CORR 537 25.1.201/MRH/1247 E-mail BB - tie	Y		M	1	4		8,653	80,122	0	0	88,675	3,124	2,862	44,661	25,945	18,716	N/A		7
61			Infraco to investigate proposals for the re-use of the RBS Bunded Material within the final design.	08/08/2008	01/08/08 25/08/08 16/09/08 22/09/08 25/09/08 01/10/08 25/11/08 18/12/08 18/12/08 07/01/09	SDS-ULE90130-07-LET-00359 25.1.201/CO/366 tie-INF CORR 119 tie-INF CORR 140 SDS-ULE90130-SW-LET-01204 25.1.201/CO/529 tie INF CORR 197 25.1.201/GC/1011 tie INF CORR 503 tie INF CORR 537 25.1.201/MRH/1247	Y		M	1	4		2,380	90,699	0	0	93,079	9,308	6,888	109,274	0	109,274	N/A		7
62			Draw down from Defined Provisional Sum Item 2 - Scottish Power connections to the Depot and Ingliston Park & Ride an Item 11 Scottish Power connections to Phase 1a sub-stations in Schedule Part 4 Appendix B Table 1	08/08/2008	11/08/08 02/10/08 28/11/08 18/12/08 07/01/09 06/01/09 29/01/09	tie INF CORR 064 ETN(BSC)TIE&ABC#050009 tie INF CORR 203 ETN(BSC)TIE&ABC#050235 tie INF CORR 537 25.1.201/MRH/1247 tie INF CORR 556 tie INF CORR 644	N/A		D				0	0	0	0	0	0	0	0	0	DPS	2 11	7	
63			Tensioning of Overhead Contact System; tensioning method, comprising an Auto Tensioned Trolley Wire for the street running areas and Auto Tensioned Catenary System for Haymarket (exclusive) to the Airport	15/08/2008	22/08/08 02/10/08	ETN(BSC)TIE&ABC#050012 tie-INF CORR 106 tie INF CORR 202	Y				1	4		0	0	0	0	0	0	0	0	N/A		2, 5, 7	
64	9		TNC009 - Ocean Terminal Revised Finishes	29/07/2008	21/08/08 10/10/08 23/10/08 06/11/08 19/11/08 02/12/08 18/12/08 18/12/08 07/01/09	tie-INF CORR 027 25.1.201/L/391 tie INF CORR 223 25.1.201/L/759 tie INF CORR 337 25.1.201/L/970 tie INF CORR 443 tie INF CORR 537 25.1.201/L/1211 25.1.201/MRH/1247	Y		I	4	1,2,3		0	0	0	0	0	0	0	0	0	DPS	13	1A	
65			Murrayfield Stadium Retaining Walls Introduce visual pattern to Murrayfield RTW	29/07/2008	04/07/08 24/07/08 08/08/08 15/08/08 21/08/08 05/09/08 02/10/08 09/10/08 18/12/08 07/01/09 03/02/09 12/02/09 27/02/09 05/03/09 18/03/09 31/03/09	SDS-ULE90130-05-LET-00285 25.1.201/JH/255 tie-INF CORR 050 tie-INF CORR 089 SDS-ULE90130-05-LET-00310 25.1.201/JH/399 tie-INF CORR 138 25.1.201/JH/570 SDS-ULE-90130-SW-LET-01227 tie INF CORR 537 25.1.201/MRH/1247 SDS-ULE90130-SW-01367 25.1.201/BCC/1583 tie INF CORR 794 25.1.201/BCC/1799 tie INF CORR 1047 25.1.201/BCC/2134	Y		M	1	4		2,763	0	0	2,763	276	309	3,348	0	3,348	N/A		5	

CEC00971600_0143

