



ETN INFRA CO NOTIFICATION of tie CHANGE (INTC)  
CONFIDENTIAL

Withdrawn/Superseded  
Delay Only  
Agreed/Change Order issued

Ref	Tie	tie Change Order TCO	Description	Date Notified	Date of further letters	Letter Ref	Agreed in Principle?	Compensation Event	Type	Change Type	Pricing Method	Priority	Value Estimate (€000)							Allocation of Cost		Section			
													€ Submitted (Euros if CAF)	€ Agreed	€ Not Agreed	Psum or VE	Number	See Notes	See Notes	See Notes	See Notes		See Notes	See Notes	See Notes
													SDS	Bilfinger	Siemens	CAF	Sub-total	OH & P	Prelims	Total	€ Agreed	€ Not Agreed	Psum or VE	Number	See Notes
74			Sewer Diversion, Gogar Landfill	05/08/2008	25/08/08 17/09/08 25/09/08 01/10/08 01/10/08 29/10/08 18/12/08 07/01/09 26/02/09	tie-INF CORR 075 25.1.201/GC/415 tie-INF CORR 160 25.1.201/O/530 Email T-9-B - Estimate Comments tie INF CORR 196 25.1.201/JH/786 tie INF CORR 537 25.1.201/MRH/1247 25.1.201/JH/1741	Y		M	1	4								0	0	N/A		7		
74a			Sewer Diversion, Gogar Landfill				N/A		M	1	4								0	0			7		
75		27	Temporary Access Ramp from Depot	05/08/2008	25/08/08 17/09/08 13/10/08 15/10/08 20/10/08 31/10/08 29/10/08 18/12/08 07/01/09 27/03/09 02/04/09	tie INF CORR 076 25.1.201/GC/416 tie INF CORR 161 25.1.201/MRH/665 tie INF CORR 234 25.1.201/MRH/729 25.1.201/L/812 tie INF CORR 295 tie INF CORR 537 25.1.201/MRH/1247 tie INF CORR 1129 tie INF CORR 1165	Y		M	1	4		0	12,222	0	0	12,222	1,222	904	14,348	14,189	160	N/A		6
76		15	Gogar Depot Public Tramstop proposals GRIP options 4B & 4C2	08/08/2008	01/08/08 20/08/08 19/09/08 19/09/08 03/10/08 18/12/08 07/01/09 23/01/09 29/01/09 30/01/09 12/03/09	25.1.201/JH/398 tie INF CORR 096 25.1.201/GC/385 SDS-ULE90130-06-LET-00106 SDS-ULE90130-06-LET-00107 25.1.201/L/427 tie INF CORR 537 25.1.201/MRH/1247 tie INF CORR 622 25.1.201/JH/1440 25.1.201/JH/1442 SDS-ULE90130-SW-LET-01448	Y		I	4	1,2 & 3								0	0	N/A		6		
77			DESIGN ONLY to Amend line of route design section 5C (Batch 522) Prior approval application Ref 08/02211/PA as tie letter INF CORR 055 dated 29th July 21008.	29/08/2008	25/07/08 18/08/08 18/09/08 03/10/08 10/10/08 16/10/08 29/10/08 18/12/08 07/01/09 16/01/09 03/02/09	tie-INF CORR 055 SDS-ULE90130-05-LET-00317 25.1.201/JH/430 tie-INF CORR 155 25.1.201/MRH/613 tie INF CORR 224 25.1.201/MRH/691 tie INF CORR 291 tie INF CORR 537 25.1.201/MRH/1247 25.1.201/L/1174 SDS-ULE90130-SW-LET-01367	Y		M	4	4		2,962	43,408	0	0	46,369	296	19,301	65,966	0	65,966	N/A		5
78			Design Only for Alterations to design of Edinburgh Airport Tramstop and retaining wall design at Jubilee Road as tie letter INF CORR 072 dated 5th August 2008.	02/09/2008	13/06/08 19/06/08 14/07/08 01/08/08 05/08/08 20/08/08 28/08/08 22/09/08 25/09/08 02/10/08 09/10/08 14/10/08 23/09/08 23/10/08 27/10/08 30/10/08 06/11/08 14/11/08 21/11/08 01/12/08 10/12/08 09/01/09 12/01/09 15/01/09 29/01/09 05/02/09 05/02/09 09/02/09 20/02/09 19/03/09	SDS-ULE90130-07-LET-00337 SDS-ULE90130-07-LET-00344 25.1.201/JH/251 25.1.201/SR/321 tie-INF CORR 072 SDS-ULE90130-07-LET-00363 tie-INF CORR 122 25.1.201/JH/444 25.1.201/JH/518 tie INF CORR 184 25.1.201/JH/567 SDS-ULE90130-SW-LET-01228 25.1.201/MRH/675 tie INF CORR 258 SDS-ULE90130-SW-LET-01248 25.1.201/MRH/773 tie INF CORR 264 25.1.201/MRH/864 tie INF CORR 388 25.1.201/MRH/993 SDS-ULE90130-SW-LET-01305 SDS-ULE90130-SW-LET-01312 25.1.201/BOC/1265 tie INF CORR 468 25.1.201/MRH/1291 tie INF CORR 656 25.1.201/BOC/1481 25.1.201/BOC/1482 tie INF CORR 723 25.1.201/MRH/1700 tie INF CORR 1058	Y		M	4	4		41,414	0	0	0	41,414	4,141	4,638	50,194	0	50,194	N/A		7
79			Instruction from CEC to design an alternative layout for Haymarket Junction	03/09/2008	20/08/08 02/10/08 16/10/08 16/10/08 22/10/08 16/12/08 18/12/08 07/01/09 03/02/09 10/02/09 12/02/09 20/02/09 25/02/09 26/02/09 27/02/09 05/03/09	SDS-ULE90130-01-LET-00768 25.1.201/JH/452 25.1.201/JH/573 tie INF CORR 238 SDS-ULE90130-SW-LET-01232 25.1.201/JH/740 25.1.201/JH/1181 tie INF CORR 537 25.1.201/MRH/1247 SDS-ULE90130-SW-LET-01367 SDS-ULE90130-SW-LET-01379 25.1.201/JH/1580 tie INF CORR 778 25.1.201/BOC/1734 25.1.201/JH/1748 tie INF CORR 794 25.1.201/BOC/1799	Y		M	4	4		44,436	0	0	0	44,436	4,444	4,977	53,856	0	53,856	N/A		2A

CEC00971600\_0145





ETN INFRA CO NOTIFICATION of the CHANGE (INTC)  
CONFIDENTIAL

Withdrawn/Superseded  
Delay Only  
Agreed/Change Order issued

Ref	Refs. tie	tie Change Order TCO	Description	Date Notified	Date of further letters	Letter Ref	Agreed in Principle?	Compensation Event	Type	Change Type	Pricing Method	Priority	Value Estimate (€000)							Allocation of Cost		Section			
													€ Submitted (Euros if CAF)	Sub-total	OH & P	Prelims	Total	€ Agreed	€ Not Agreed	Psum or VE	Number				
80			Gogarburn Retaining Wall - CEC requesting change to the finish of the wall as per PB letter ULE901330-07-LET-00369 dated 3 September.	09/09/2008	03/09/08 26/09/08 02/10/08 02/10/08 29/10/08 04/11/08 10/12/08 19/12/08 07/01/09 13/01/09 20/01/09 20/01/09	SDS-ULE90130-07-LET-00369 25.1.201/JH/467 SDS-ULE90130-07-LET-00379 25.1.201/JH/590 SDS-ULE90130-SW-LET-01229 25.1.201/JH/1795 tie INF CORR 195 25.1.201/GC/1125 25.1.201/JH/1198 SDS-ULE90130-SW-LET-01330 tie INF CORR 583 25.1.201/BOC/1304 25.1.201/JH/1312	Y		M	4	4	4,258	0	0	0	4,258	426	315	4,999	0	4,999	N/A		7	
81			Environmentally Friendly Lighting - CEC have requested using 42 watt pit lamp rather than the 70 watt CDO (white light) as per PB letter ULE90130-SW-LET-01184 dated 3 September 2008.	09/09/2008	03/09/08 22/09/08 22/09/08 30/09/08 02/10/08 22/10/08 22/10/08 30/10/08 18/12/08 07/01/09 03/02/09 12/02/09 27/02/09 05/03/09 06/03/09 18/03/09 24/03/09 27/03/09 02/04/09 07/04/09	SDS-ULE90130-SW-LET-01184 Change Notification tie INF CORR 173 25.1.201/JH/468 SDS-ULE90130-05-LET-00332 25.1.201/JH/581 25.1.201/JH/739 SDS-ULE90130-05-LET-00341 25.1.201/JH/810 tie INF CORR 537 25.1.201/MRH/1247 SDS-ULE90130-SW-LET-01367 25.1.201/JH/1582 tie INF CORR 794 25.1.201/BOC/1799 tie INF CORR 846 tie INF CORR 1046 25.1.201/JH/2065 25.1.201/JH/2120 SDS-ULE90130-SW-LET-01495 25.1.201/JH/2200	N		M	1	4	9,378	0	0	0	9,378	998	1,050	11,366	0	11,366	N/A		All	
82			Contamination : fly tipping, Oil pollution Contaminated material Household waste Giant Hogweed	28/08/2008	02/07/08 19/09/08	25.1.201/TM208 25.1.201/TM424 tie- INF CORR 168	Part		M	1	4	0	0	0	0	0	0	0	0	0	0	0	N/A		2,5
83			Traffic Management - Temporary Traffic Signals	21/08/2008	30/07/08 07/08/08 09/09/08 25/09/08 06/10/08 15/10/08 06/11/08	25.201.00/PW/320 tie- INF CORR 079 25.1.201/PW/367 25.1.201/TM/472 tie INF CORR 136 tie INF CORR 151 25.1.201/PW/685 tie INF CORR 344	N			1	4	0	0	0	0	0	0	0	0	0	0	0	N/A		9
84	5	18	TN C005-Burnside road Diversion - Fees for design (INF_CORR_006)	20/06/2008	23/06/08 10/07/08 16/07/08 30/07/08 14/08/08 26/08/08 26/08/08 10/09/08 02/10/08 09/10/08 16/10/08 29/10/08 18/11/08 21/11/08 12/12/08 18/12/08 05/01/09 07/01/09 29/01/09 03/02/09	tie- INF CORR 006 25.1.201/TM/176 SDS-ULE90130-07-LET-00362 25.1.201/JH/269 tie- INF CORR 062 25.1.201/TM/376 25.1.201/JH/419 SDS-ULE90130-05-LET-00323 25.1.201/JH/477 25.1.201/JH/569 SDS-ULE90130-SW-LET-01221 tie INF CORR 230 25.1.201/JH/799 SDS-ULE90130-07-LET-00380 25.1.201/JH/969 tie INF CORR 514 tie INF CORR 537 25.1.201/BOC/1240 25.1.201/MRH/1247 tie INF CORR 645 tie INF CORR 670	Y		M	4	4	380	340	0	0	720	incl	incl	720	720	0	0	N/A		7
85	8		TN C008 - Lindsay Road Retaining Wall Cost Estimate (Now based on IFC Drawings as agreed with tie)	02/07/2008	30/07/08 16/01/09 17/11/08 20/11/08 12/12/08 18/12/08 18/12/08 07/01/09 07/01/09 03/03/09	tie- INF CORR 021 BBtie - Email updated position tie INF CORR 244 tie INF CORR 387 25.1.201/MRH/973 tie INF CORR 308 tie INF CORR 537 25.1.201/MRH/1209 25.1.201/MRH/1247 25.1.201/OC/1783	Y		M	1	1,2,3,4	0	798,203	0	0	798,203	156	430,364	1,228,723	0	1,228,723	VPS	8	1A	

CEC00971600\_0146





ETN INFRACO NOTIFICATION of tie CHANGE (INTC)  
CONFIDENTIAL

Withdrawn/Superseded  
Delay Only  
Agreed/Change Order issued

Ref	Tie	tie Change Order TCO	Description	Date Notified	Date of further letters	Letter Ref	Agreed in Principle?	Compensation Event	Type	Change Type	Pricing Method	Priority	Value Estimate (€000)							Allocation of Cost		Section			
													€ Submitted (Euros if CAF)	Sub-total	OH & P	Prelims	Total	€ Agreed	€ Not Agreed	Psum or VE	Number				
See Notes	See Notes	See Notes	See Notes	See Notes	See Notes	See Notes	See Notes	See Notes	See Notes	See Notes	See Notes	See Notes	See Notes	See Notes	See Notes	See Notes	See Notes	See Notes	See Notes	See Notes	See Notes				
86	10		MUDFA TO INFRACO transfer of Utilities Diversion Section 1A, 1B, 1C and 1D	08/08/2008	20/08/08 20/08/08 21/08/08 17/09/08 14/10/08 16/10/08 23/10/08 27/10/08 29/10/08 17/11/08 20/11/08 20/11/08 24/11/08 27/11/08 29/11/08 12/12/08 12/12/08 16/12/08 18/12/08 18/12/08 18/12/08 05/01/09 07/01/09 20/01/09 20/01/09 26/01/09 02/04/09	tie-INF CORR 091 25.1.201/GC/384 25.1.201/L/387 25.1.201/L/393 tie INF CORR 157 Email - Conflict Services tie INF CORR 244 25.1.201/L/764 tie INF CORR 273 25.1.201/MRH/796 tie INF CORR 387 25.1.201/MRH/973 tie INF CORR 407 tie INF CORR 408 25.1.201/MRH/1020 25.1.201/MRH/1039 tie INF CORR 521 tie INF CORR 508 25.1.201/MRH/1183 tie INF CORR 537 25.1.201/MRH/1209 tie INF CORR 488 25.1.201/MRH/1229 25.1.201/MRH/1247 tie INF CORR 598 tie INF CORR 617 25.1.201/MRH/1389 tie INF CORR 1163	Y	Y	M	1	1,2,3	0	0	0	0	0	0	0	0	0	0	0	N/A	1	
87	11	4 13	Duct installation at Leith Walk	11/07/2008	22/06/08 14/07/08 31/07/08 21/08/08 10/09/08 17/09/08 23/09/08 23/09/08 22/09/08 06/10/08 08/10/08 16/10/08 27/10/08 19/11/08 19/11/08 02/12/08 05/01/09 22/01/09	Email BB/tie - re Estimate tie-INF CORR 030 email BB/BB re INF CORR 030 25.1.201/JH/326 25.1.201/L/393 25.1.201/L/475 tie INF CORR 158 25.1.201/L/520+Core Estimate 25.1.201/L/520 tie INF CORR 175 tie INF CORR 206 e-mail Infraco-SDS (MRH) tie INF CORR 240 tie INF CORR 276 tie INF CORR 363 25.1.201/MRH/954 tie INF CORR 441 25.1.201/L/1237 tie INF CORR 630	Y		I	1	4	0	255	0	0	255	26	19	299	300	-1	N/A		1B	
88	14		Power Connections Phase 1a	08/08/2008	25/09/08 16/10/08 28/11/08 09/12/08 18/12/08 06/01/09 07/01/09 09/01/09 22/01/09 28/01/09 29/01/09 10/03/09 16/03/09 30/03/09	tie-INF CORR 084 ETN9BSC)TIE&ABC#050055 tie INF CORR 244 ETN(BSC)TIE&ABC#050235 ETN(BSC)TIE&ABC#050253 tie INF CORR 537 tie INF CORR 556 25.1.201/MRH/1247 ETN(BSC)TIE&ABC#050260 ETN(BSC)TIE&ABC#050357 tie INF CORR 642 tie INF CORR 644 ETN9BSC)TIE&ABC#050485 tie INF CORR 1035 tie INF CORR 1078	Y		M	1	4	0	0	1,875,899	0	1,875,899	318,902	138,816	2,333,611	0	2,333,611	DPS	11	All	
89			Balfour Street Crossing	30/10/08	01/08/08 08/08/08 22/08/08 24/11/08 26/11/08 12/12/08 23/02/09 26/03/09	SDS-ULE90130-01-LET-00748 25.1.201/GC/364 tie INF CORR 104 25.1.201/JH/804 tie INF CORR 412 25.1.201/MRH/1019 25.1.201/JH/1139 SDS-ULE90130-01-LET-00832 25.1.201/JH/2092	Y		M	1	1,2,3	7,872	0	0	0	7,872	787	588	9,242	0	9,242	N/A		1B	
90			Change order request: SDS Development Workshop Attendance	31/07/2008	30/04/08 23/07/08 21/08/08 26/09/08 16/12/08 18/12/08 07/01/09 23/02/09 12/03/09	PD CORR 08556/S ULE90130-01-LET-01085 25.1.201/JH/329 tie INF CORR 102 25.1.201/JH/541 25.1.201/JH/1181 tie INF CORR 537 25.1.201/MRH/1247 SDS-ULE90130-SW-LET-01404 25.1.201/BOC/1309	N/A	N/A		1		0	0	0	0	0	0	0	0	0	N/A		All		
91			Confirmation of Verbal Instruction Reference ETN002- Compensation Event Notice Edinburgh Park Structure (S21) Earthworks/Foundations.	10/09/2008	02/10/08 09/10/08 23/10/08 30/10/08 06/11/08 12/01/09 06/03/09	25.1.201/MRH/479 25.1.201/JH/590 tie INF CORR 204 25.1.201/O/756 tie INF CORR 306 25.1.201/O/868 25.1.201/O/1272 tie INF CORR 889	Y		I	1	1,2,3	0	282,276	0	0	282,276	incl	129,355	405,631	0	405,631	N/A		5	

CEC00971600\_0147





ETN INFRACO NOTIFICATION of the CHANGE (INTC)  
CONFIDENTIAL

Ref.	The Change Order Ref.	Description	Date Notified	Date of further letters	Letter Ref	Agreed in Principle?	Compensation Event	Type	Change Type	Pricing Method	Priority	Value Estimate (€)					Allocation of Cost		Section			
												Subtotal	Ort & P	Prelims	CAF	Siemens	Bilfinger	SDS		£ Not Agreed	£ Agreed	£ Not Agreed
92	T00	Design the Russell Road retaining wall to ensure that this avoids clashing with the existing sewer as per the letter INF_CORR_061 dated 23/07/08.	11/09/2008	23/07/08 29/07/08 02/09/08 26/09/08 02/10/08 09/10/08 15/10/08 22/10/08 29/10/08 05/11/08 13/11/08 20/11/08 12/12/08 17/12/08 28/02/09	INF CORR 051 SDS-ULE90130-06-LET-00524 25.1.201/HH/013 25.1.201/HH/487 25.1.201/HH/487 25.1.201/HH/487 SDS-ULE90130-SW-LET-01230 Re INF CORR 235 25.1.201/HH/737 Re INF CORR 280 25.1.201/HH/840 Re INF CORR 355 25.1.201/BC/979 25.1.201/BC/976 Re INF CORR 320 25.1.201/HH/1156 SDS-ULE90130-SW-LET-01480	TBA	N/A	M											5			
93		Lindsay Road, Ocean Drive, Ocean Terminal & Tower Place Planning Permission	24/09/2008	20/10/08 24/10/08 12/11/08 25/11/08 18/12/08 07/01/09	Re INF CORR 248 25.1.201/HH/766 25.1.201/BC/693 25.1.201/BC/693 Re INF CORR 537 25.1.201/AMRH/1247	N		M	1	4										1A		
94		Hilton Hotel Full Planning	14/07/2008	17/06/08 28/08/08 09/09/08 22/09/08 12/11/08 16/12/08 20/02/09 17/03/09	Re-ULE90130-07-LET-00339 Re-INF CORR 124 PB-ULE90130-07-LET-00370 25.1.201/HH/514 25.1.201/BC/693 25.1.201/HH/1181 Re INF CORR 775 SDS-ULE90130-06-LET-00073	N			1	4										7		
95		Additional Depot Prior Approvals	14/07/2008	02/09/08 09/09/08 16/10/08 20/10/08 21/10/08 30/10/08 07/11/08 13/11/08 08/12/08 03/02/09 21/02/09 25/02/09 05/03/09	25.1.201/HH/239 Re-INF CORR 089 25.1.201/HH/999 PB-ULE90130-06-LET-00105 25.1.201/AMRH/669 25.1.201/BC/693 25.1.201/HH/1181 Re-INF CORR 054 SDS-ULE90130-01-LET-00784 25.1.201/HH/469 25.1.201/HH/469 SDS-ULE90130-SW-LET-01242 Re INF CORR 236 25.1.201/AMRH/722 25.1.201/HH/732 Re INF CORR 298 25.1.201/HH/871 25.1.201/HH/873 SDS-ULE90130-SW-LET-01314 SDS-ULE90130-LET-F01367 25.1.201/HH/1571 25.1.201/HH/1571 25.1.201/BC/1789	Y			4											6		
96		Shandwick Place DED preferential Treatments	24/07/2008	02/09/08 09/09/08 16/10/08 20/10/08 21/10/08 30/10/08 07/11/08 13/11/08 08/12/08 03/02/09 21/02/09 25/02/09 05/03/09	Re-INF CORR 054 SDS-ULE90130-01-LET-00784 25.1.201/HH/469 25.1.201/HH/469 SDS-ULE90130-SW-LET-01242 Re INF CORR 236 25.1.201/AMRH/722 25.1.201/HH/732 Re INF CORR 298 25.1.201/HH/871 25.1.201/HH/873 SDS-ULE90130-SW-LET-01314 SDS-ULE90130-LET-F01367 25.1.201/HH/1571 25.1.201/HH/1571 25.1.201/BC/1789															1D		
97		Balgreen road Bridge Amending Technical Design	14/07/2008	19/06/08 23/07/08 29/07/08 29/08/08 22/09/08 02/10/08 06/10/08 09/10/08 15/10/08 20/10/08 13/11/08 24/11/08 02/12/08 18/12/08 07/01/09 09/02/09 12/02/09 18/02/09 27/02/09 05/03/09 06/03/09 17/03/09 18/03/09 19/03/09 25/03/09 27/03/09 06/04/09	SDS-ULE90130-06-LET-00279 25.1.201/HH/239 Re-ULE90130-06-LET-00300 25.1.201/HH/432 SDS-ULE90130-06-LET-00529 25.1.201/HH/668 25.1.201/AMRH/621 SDS-LE90130-SW-LET-01226 Re INF CORR 228 25.1.201/AMRH/721 30/10/08 25.1.201/HH/807 25.1.201/HH/873 Re INF CORR 417 25.1.201/HH/873 Re INF CORR 537 25.1.201/AMRH/1247 SDS-ULE90130-SW-LET-01367 25.1.201/HH/1574 SDS-ULE90130-SW-LET-01396 Re INF CORR 734 05/03/09 Re INF CORR 849 SDS-ULE90130-SW-LET-01460 Re INF CORR 1045 25.1.201/HH/2018 25.1.201/HH/2018 25.1.201/HH/2018 25.1.201/HH/2018 25.1.201/HH/2178	N			1	4												5
98		Notified Departure due to the issue of SDS Design programme V32.	11/09/2008	30/09/08 15/10/08 13/11/08	25.1.201/BC/2486 Re INF CORR 190 25.1.201/AMRH/695 25.1.201/BC/2486	N/A		M												AI1		
99		Notified Departure due to the issue of SDS Design programme V33.	11/09/2008	30/09/08 15/10/08 13/11/08	25.1.201/AMRH/695 Re INF CORR 190 Re INF CORR 351 25.1.201/BC/2486	N/A		M												AI1		
100		Notified Departure due to the issue of SDS Design programme V34.	11/09/2008	30/09/08 15/10/08 13/11/08	25.1.201/AMRH/695 Re INF CORR 190 Re INF CORR 351 25.1.201/BC/2486	N/A		M												AI1		
101		Notified Departure due to the issue of SDS Design programme V35.	11/09/2008	30/09/08 15/10/08 13/11/08	25.1.201/BC/2486 Re INF CORR 190 25.1.201/AMRH/695 Re INF CORR 351	N/A		M												AI1		

















ETN INFRA CO NOTIFICATION of tie CHANGE (INTC)  
CONFIDENTIAL

Withdrawn/Superseded  
Delay Only  
Agreed/Change Order issued

Ref	Tie	tie Change Order TCO	Description	Date Notified	Date of further letters	Letter Ref	Agreed in Principle?	Compensation Event	Type	Change Type	Pricing Method	Priority	Value Estimate (€000)							Allocation of Cost		Section				
													€ Submitted (Euros if CAF)							€ Agreed	€ Not Agreed		Psum or VE	Number		
													SDS	Bilfinger	Siemens	CAF	Sub-total	OH & P	Prelims						Total	
130			Delay to issue of IFC Drawings for Ingliston Park and Ride Tram Stop	06/10/2008	20/09/08 15/10/08 20/10/08	ULE90130-07-LET-00364 25.1.201/MRH/623 tie INF CORR 229 25.1.201/MRH/724	N/A						0	0	0	0	0	0	0	0	0	0	N/A		7	
131			Delay to Section 1B due to MUDFA not having completed its works	08/10/2008	23/09/08 27/10/08 05/11/08 14/11/08 21/11/08	25.1.201/GC/633 tie INF CORR 258 25.1.201/MRH/773 tie INF CORR 326 tie INF CORR 388 25.1.201/MRH/993	N/A						0	0	0	0	0	0	0	0	0	0	N/A		1B	
132			War Memorial Relocation (Psum)	10/10/2010	23/09/08 27/10/08 14/11/08 21/11/08	25.1.201/GC/661 tie INF CORR 258 25.1.201/MRH/773 tie INF CORR 388 25.1.201/MRH/993	N/A		M				0	0	0	0	0	0	0	0	0	0	N/A		2A	
133			Section 1C - Picardy Place - Modifications to designs, additional design work outside LOD and additional works to pavements in front of the Playhouse	08/10/2008	26/09/08 02/10/08 01/11/08 23/09/08 27/10/08 27/10/08 30/10/08 14/11/08 18/11/08 21/11/08	SDS-ULE90130-LET-00816 SDS-ULE90130-01-LET-00822 25.1.201/MRH/639 SDS-ULE90130-01-LET-00820 tie INF CORR 258 25.1.201/MRH/773 tie INF CORR 271 25.1.201/MRH/806 tie INF CORR 388 SDS-ULE90130-01-LET-00873 25.1.201/MRH/993	N/A						0	0	0	0	0	0	0	0	0	0	N/A		1C	
137			Sections 1A1 and 1A2 - CEC's proposed amendments to tree build-outs adjacent 4 Constitution Street	08/10/08	26/09/08 23/09/08 27/10/08 27/10/08 31/10/08 14/11/08 18/11/08 21/11/08 19/01/09 30/01/09 03/04/09	SDS-ULE90130-01-LET-00817 25.1.201/MRH/642 tie INF CORR 258 25.1.201/MRH/773 tie INF CORR 265 25.1.201/JH/817 tie INF CORR 388 SDS-ULE90130-01-LET-00865 25.1.201/MRH/993 25.1.201/JH/1298 25.1.201/JH/1433 SDS-ULE90130-SW-LET-01500	N			1	4		0	0	0	0	0	0	0	0	0	0	0	N/A		1A
138			Design the piled foundations to the Water of Leith Bridge to avoid the existing 950 x 1200mm egg shaped combined sewer	05/09/2008	10/11/08 13/11/08 18/11/08 09/02/09 10/02/09 12/02/09 27/02/09 05/03/09 11/03/09 25/03/09 31/03/09 08/04/09	tie INF CORR 067 25.1.201/B0C/882 tie INF CORR 370 SDS-ULE90130-01-LET-00876 SDS-ULE90130-SW-LET-01367 SDS-ULE90130-SW-LET-01379 25.1.201/B0C/1565 tie INF CORR 794 25.1.201/B0C/1799 tie INF CORR 940 25.1.201/B0C/2073 SDS-ULE90130-SW-LET-01489 25.1.201/B0C/2215	Y		M	1	4		27,696	0	0	0	27,696	2,770	3,102	33,567	0	33,567	N/A		5	
139			Revised location of OLE poles in Section 1A at the request of CEC	09/10/2008	06/10/08 23/09/08 27/10/08 31/10/08 13/11/08 14/11/08 18/11/08 21/11/08 21/11/08 16/12/08 10/02/09 12/02/09 27/02/09 05/03/09 10/03/09 17/03/09 17/03/09 18/03/09 27/03/09	SDS-ULE90130-01-LET-00828 25.1.201/MRH/645 tie INF CORR 258 25.1.201/MRH/773 25.1.201/JH/819 tie INF CORR 382 tie INF CORR 388 SDS-ULE90130-01-LET-00867 25.1.201/MRH/993 25.1.201/JH/995 25.1.201/JH/1181 SDS-ULE90130-SW-LET-01379 25.1.201/JH/1584 tie INF CORR 794 25.1.201/B0C/1799 SDS-ULE90130-LET-00962 25.1.201/JH/1947 25.1.201/JH/1948 tie INF CORR 1048 25.1.201/JH/2114	N		M	1	1,2,3,4		6,876	0	0	0	6,876	688	770	8,333	0	8,333	N/A		1B	
140			Delay to issue of IFC Drawings for Port of Leith Tram Stop, Berrard Street Tram Stop, Foot of the Walk Tram Stop, 1A1 Roads, Street Lighting, Landscape and Drainage, 1A2 Roads, Street Lighting, Landscape and Drainage	09/10/2008	29/08/08 25/09/08	SDS-ULE90130-01-LET-00779 SDS-ULE90130-01-LET-00814 25.1.201/MRH/647	N/A							0	0	0	0	0	0	0	0	0	0	N/A		1A
141		24	West End Tramstop - revised requirements from CEC/tie	31/10/2008	26/10/08 30/10/08 04/11/08 06/11/08 13/11/08 17/11/08 19/11/08 27/11/08 11/12/08 17/12/08 19/12/08 07/01/09 07/01/09 06/03/09	SDS-ULE90130-01-LET-00849 25.1.201/JH/— SDS-ULE90130-SW-LET-01257 SDS-ULE90130-LET-00858 25.1.201/B0C/845 25.1.201/B0C/903 25.1.201/JH/935 SDS-ULE90130-SW-LET-01273 tie INF CORR 431 25.1.201/B0C/1127 25.1.201/B0C/1128 25.1.201/JH/1194 tie INF CORR 537 25.1.201/MRH/1247 SDS-ULE90130-SW-LET-01330 tie INF CORR 896	Y		M	1	4		14,551	0	0	0	14,551	1,455	1,077	17,082	0	17,082	N/A		1	
142			Christmas and Festival Suspensions - conflict of information	19/10/2008	05/11/08	25.1.201/L/658 tie INF CORR 327	N/A							0	0	0	0	0	0	0	0	0	0	N/A		All

CEC00971600\_0152









ETN INFRA CO NOTIFICATION of the CHANGE (INTC)  
CONFIDENTIAL

Withdrawn/Superseded  
Delay Only  
Agreed/Change Order issued

Ref	Title	Change Order TCO	Description	Date Notified	Date of further letters	Letter Ref	Agreed in Principle?	Compensation Event	Type	Change Type	Pricing Method	Priority	Value Estimate (€000)							Allocation of Cost		Section		
													€ Submitted (Euros if CAF)	Sub-total	OH & P	Prelims	Total	€ Agreed	€ Not Agreed	Psum or VE	Number			
													SDS	Bilfinger	Siemens	CAF								
152			IFC Drawing changes Vertical and horizontal Alignment Section 5 Sheets 1 to 26	16/10/2008	23/09/08 22/10/08 27/10/08 28/10/08 31/10/08 04/11/08 05/11/08 10/11/08 09/12/08 12/12/08 16/12/08 20/01/09 04/02/09 06/03/09 11/03/09 18/03/09 18/03/09	25.1.2010/700 tie INF CORR 258 tie INF CORR 259 25.1.201MRH/773 25.1.201MRH/778 tie INF CORR 318 25.1.201MRH/836 tie INF CORR 330 25.1.201MRH/887 tie INF CORR 459 25.1.201MRH/1162 25.1.201MRH/1173 tie INF CORR 575 25.1.201AL/1357 tie INF CORR 867 tie INF CORR 866 25.1.201MRH/1994 25.1.201MRH/1990	TBA		M	1	1,2,3	0	0	0	0	0	0	0	0	0	0	0	N/A	5
153			IFC Drawing changes Soft Landscaping Section 5 sheets 1 to 26	16/10/2008	23/09/08 22/10/08 27/10/08 28/10/08 31/10/08 04/11/08 09/12/08 12/12/08 16/12/08 20/01/09 28/01/09	25.1.2010/701 tie INF CORR 258 tie INF CORR 259 25.1.201MRH/773 25.1.201MRH/778 tie INF CORR 318 25.1.201MRH/836 tie INF CORR 459 25.1.201MRH/1162 25.1.201MRH/1173 tie INF CORR 575 25.1.201AL/1358	TBA		M	1	1,2,3	0	0	0	0	0	0	0	0	0	0	N/A	5	
154			IFC Drawing changes OLE Section 5 sheets 1 to 13	16/10/2008	23/09/08 22/10/08 27/10/08 28/10/08 31/10/08 04/11/08 09/12/08 12/12/08 16/12/08 20/01/09 28/01/09	25.1.2010/702 tie INF CORR 258 tie INF CORR 259 25.1.201MRH/773 25.1.201MRH/778 tie INF CORR 318 25.1.201MRH/836 tie INF CORR 459 25.1.201MRH/1162 25.1.201MRH/1173 tie INF CORR 575 25.1.201AL/1359	TBA		M	1	1,2,3	0	0	0	0	0	0	0	0	0	0	N/A	5	
155			IFC Drawing changes Gogarburn RTWs 15A, 15C, 144D	16/10/2008	23/09/08 22/10/08 27/10/08 28/10/08 31/10/08 04/11/08 09/12/08 12/12/08 16/12/08 20/01/09 28/01/09	25.1.2010/703 tie INF CORR 258 tie INF CORR 259 25.1.201MRH/773 25.1.201MRH/778 tie INF CORR 318 25.1.201MRH/836 tie INF CORR 459 25.1.201MRH/1162 25.1.201MRH/1173 tie INF CORR 575 25.1.201AL/1360	TBA		M	1	1,2,3	0	0	0	0	0	0	0	0	0	0	N/A	5	
156			IFC Drawing changes Tramstops Balgreen Edinburgh Park Saughton and South Gyle	16/10/2008	23/09/08 22/10/08 27/10/08 28/10/08 31/10/08 04/11/08 09/12/08 12/12/08 16/12/08 20/01/09 28/01/09	25.1.2010/704 tie INF CORR 258 tie INF CORR 259 25.1.201MRH/773 25.1.201MRH/778 tie INF CORR 318 25.1.201MRH/836 tie INF CORR 459 25.1.201MRH/1162 25.1.201MRH/1173 tie INF CORR 575 25.1.201AL/1361	TBA		M	1	1,2,3	0	0	0	0	0	0	0	0	0	0	N/A	5	
157			Survey of Existing Drainage (Gogar Landfill)	10/10/2008	15/10/08 29/10/08 07/04/09	tie INF CORR 218 25.1.201MRH/693 tie INF CORR 294 25.1.201AL/2187	Y		I	1	4		0	3,258	0	0	3,258	incl	1,075	4,334	0	4,334	N/A	5
158	18		Provisional Sum - Provide Crew Relief Facilities at Haymarket Station Viaduct. Undefined Provisional Sum	10/10/2008	15/10/08 23/09/08 27/10/08 28/10/08 28/10/08 29/10/08 14/11/08 19/11/08 21/11/08 12/12/08 18/12/08 18/12/08 07/01/09 12/03/09 12/03/09 19/03/09	tie INF CORR 221 25.1.201MRH/689 tie INF CORR 258 25.1.201MRH/773 25.1.201AL/783 25.1.201AL/784 25.1.201AL/785 tie INF CORR 388 25.1.201AL/972 25.1.201MRH/893 tie INF CORR 504 tie INF CORR 537 25.1.201AL/1205 25.1.201MRH/1247 25.1.201AL/785 tie INF CORR 957 25.1.201AL/2021	Y		D	1	4	0	112,010	0	0	112,010	11,201	17,191	140,402	103,562	36,840	VPS	5	2A

CEC00971600\_0154









ETN INFRA CO NOTIFICATION of the CHANGE (INTC)  
CONFIDENTIAL

Withdrawn/Superseded  
Delay Only  
Agreed/Change Order issued

Ref	Title	Change Order TCO	Description	Date Notified	Date of further letters	Letter Ref	Agreed in Principle?	Compensation Event	Type	Change Type	Pricing Method	Priority	Value Estimate (€000)							Allocation of Cost		Section			
													€ Submitted (Euros if CAF)	Sub-total	OH & P	Prelims	Total	€ Agreed	€ Not Agreed	Psum or VE	Number				
167			Accommodation Works to Wanderers Clubhouse Building at Murrayfield	20/10/2008	02/07/08 23/09/08 27/10/08 07/11/08 06/11/08 11/11/08 14/11/08 17/11/08 21/11/08 21/11/08 03/12/08 09/12/08 20/01/09 20/01/09 29/01/09 05/02/09 06/03/09 12/03/09 12/03/09 12/03/09 12/03/09 12/03/09	25.1.201/MRH/716 25.1.201/TM/206 tie INF CORR 258 25.1.201/MRH/773 25.1.201/JH/676 tie INF CORR 334 25.1.201/MRH/891 tie INF CORR 388 SDS-ULE90130-05-LET-00356 25.1.201/BOC/991 25.1.201/MRH/993 tie INF CORR 456 25.1.201/MRH/1112 25.1.201/L/1309 Graham Const. 25.1.201/L/1310 tie INF CORR 650 25.1.201/MNH/1498 tie INF CORR 904 25.1.201/L/1309 Graham 25.1.201/L/1515 CBC 25.1.201/L/1916 Clark 25.1.201/L/1917 BMR 25.1.201/L/1918 GSL 25.1.201/L/1919	Y		I	4	1,2,3	0	0	0	0	0	0	0	0	0	0	VPS	1	5	
168		16	Demolition of existing building at 33 Ocean Drive.	20/10/2008	23/09/08 27/10/08 29/10/08 14/11/08 21/11/08 26/11/08 12/12/08 18/12/08 19/12/08 07/01/09 02/03/09	25.1.201/MRH/717 tie INF CORR 258 25.1.201/MRH/773 tie INF CORR 285 tie INF CORR 388 25.1.201/MRH/993 25.1.201/L/1015 tie INF CORR 512 tie INF CORR 537 25.1.201/L/1218 25.1.201/MRH/1247 tie INF CORR 785	Y		I	1	1,2,3	0	5,000	0	0	5,000	500	370	5,870	5,858	12	N/A		5	
169			Demolition of Police Box Coffee Bar - Picardy Place	20/10/2008	23/09/08 27/10/08 29/10/08 14/11/08 20/11/08 21/11/08 17/12/08 18/12/08 07/01/09 16/02/09	25.1.201/MRH/718 tie INF CORR 258 25.1.201/MRH/773 tie INF CORR 290 tie INF CORR 388 25.1.201/L/974 25.1.201/MRH/993 tie INF CORR 534 tie INF CORR 537 25.1.201/MRH/1247 25.1.201/L/1503	Y		I	1	1,2,3	0	14,409	0	0	14,409	1,267	6,819	22,495	0	22,495	N/A		1C	
170	32		Demolition and alteration of existing building at Cathedral Lane	20/10/2008	23/09/08 27/10/08 29/10/08 11/11/08 14/11/08 21/11/08 12/12/08 18/12/08 13/01/09	25.1.201/MRH/719 tie INF CORR 258 25.1.201/MRH/773 tie INF CORR 286 25.1.201/MRH/892 tie INF CORR 388 25.1.201/MRH/993 tie INF CORR 516 25.1.201/O/1201 tie INF CORR 571	Y		I	1	1,2,3	0	0	0	0	0	0	0	0	0	0	N/A		1A	
171			Contract with Faber Maunsel for Transyt and Linsig Modelling Assessments. Instruction limited to period ending 30/04/2009.	15/10/2008	07/11/08 12/12/08 03/02/09	tie INF CORR 227 25.1.201/GC/875 tie INF CORR 505 25.1.201/GC/1284	Y		I	1	4		0	22,277	0	0	22,277	2,228	4,347	28,852	0	28,852	N/A		All
172		23	Traffic Modelling - Pedestrian Crossing Timings Standard	08/09/2008	14/10/08 16/10/08 16/10/08 20/10/08 22/10/08 23/10/08 30/10/08 06/11/08 04/11/08 18/11/08 21/11/08 11/12/08 15/12/08 18/12/08 07/01/09 20/01/09 04/02/09 05/02/09 09/02/09 20/02/09 24/02/09 27/02/09 05/03/09 02/04/09 07/04/09 08/04/09	25.1.201/SR/456 SDS-ULE90130-SW-LET-01238 tie INF CORR 239 tie INF CORR 245 25.1.201/MRH/729 25.1.201/JH/742 25.1.201/JH/762 tie INF CORR 301 25.1.201/JH/869 tie INF CORR 323 SDS-ULE90130-SW-LET-01287 25.1.201/JH/992 SDS-ULE90130-SW-LET-01323 25.1.201/BOC/1169 tie INF CORR 537 25.1.201/MRH/1247 tie INF CORR 620 SDS-ULE90130-SW-LET-01369 25.1.201/BOC/1480 25.1.201/BOC/1527 SDS-ULE90130-SW-LET-01399 25.1.201/BOC/1722 tie INF CORR 734 25.1.201/BOC/1799 tie INF CORR 1169 25.1.201/JH/2188 25.1.201/BOC/2204	Y		I	1	4	36,874	0	0	0	36,874	3,687	2,729	43,290	0	43,290	N/A		All	

CEC00971600\_0156





ETN INFRACO NOTIFICATION of tie CHANGE (INTC)  
CONFIDENTIAL

Withdrawn/Superseded  
Delay Only  
Agreed/Change Order issued

Ref	Tie	Tie Change Order TCO	Description	Date Notified	Date of further letters	Letter Ref	Agreed in Principle?	Compensation Event	Type	Change Type	Pricing Method	Priority	Value Estimate (€000)						Allocation of Cost		Section				
													€ Submitted (Euros if CAF)	CAF	Sub-total	OH & P	Prelims	Total	€ Agreed	€ Not Agreed		Psum or VE	Number		
173		26	Discovery of underground petrol tank at National Car Rental Site.	22/10/2008	30/10/08 04/11/08 09/12/08 09/12/08 12/12/08 16/12/08 21/01/09 11/02/09 12/02/09 23/02/09 06/03/09 27/03/09 07/04/09 07/04/09	25.1.201/MRH/738 tie INF CORR 300 25.1.201/MRH/835 tie INF CORR 458 25.1.201/MRH/1108 tie INF CORR 503 25.1.201/MRH/1188 25.1.201/MRH/1320 tie INF CORR 741 tie INF CORR 736 25.1.201/MRH/1698 25.1.201/GC/1880 INF CORR 1112 25.1.201/MRH/2198 tie INF CORR 1122	Y	Y		1	4	0	4,100	0	0	4,100	410	1,570	6,080	4,813	6,080	N/A		5	
174			Discovery of new BT ducts under kerb line in Section 1B	22/10/2008	27/10/08 29/10/08 30/10/08 06/11/08 01/12/08 18/12/08 05/01/09 20/01/09 26/01/09 12/02/09 20/02/09 06/03/09 16/03/09 27/03/09 07/04/09	25.1.201/MRH/741 tie INF CORR 272 25.1.201/MRH/792 tie INF CORR 303 tie INF CORR 348 25.1.201/MRH/1069 tie INF CORR 486 25.1.201/MRH/1233 tie INF CORR 618 25.1.201/MRH/1393 tie INF CORR 735 25.1.201/MRH/1692 tie INF CORR 928 25.1.201/MRH/1937 tie INF CORR 1117 25.1.201/MRH/2195	Y	Y	M	1	4	0	0	0	0	0	0	0	0	0	0	VPS	2	1B	
175			SDS Provisional Sums - Extended Construction Support and Design Support Team	22/10/2008	06/10/08 27/10/08 30/10/08 31/10/08 30/10/08 06/11/08 20/11/08 22/11/08 08/12/08 16/12/08	25.1.201/SR/626 25.1.201/MRH/743 tie INF CORR 263 25.1.201/JH/803 tie INF CORR 519 ULE90130-SW-LET-01298 25.1.201/BOC/862 25.1.201/JH/952 25.1.201/JH/990 tie INF CORR 474 25.1.201/JH/1186	N/A						0	0	0	0	0	0	0	0	0	N/A		All	
176	22	9	CVIs - Construct Temporary Ramps (2 no.) at Gogar Church Road Construct Car Park	17/10/2008	02/07/08 17/11/08 26/11/08 01/12/08 18/12/08	25.1.201/TM/207 tie INF CORR 231 25.1.201/L/939 tie INF CORR 430 25.1.201/L/1070 tie INF CORR 528	Y		I	1	4		0	6,185	0	0	6,185	incl	458	6,643	6,643	0	N/A		5C
177			Harbour Trackwork Storage Area	30/10/2008	14/11/08 18/12/08 07/01/09 20/01/09 05/03/09 12/03/09	ETN(BSC)TIE-T&ABC#050083 ETN(BSC)TIE-T&ABC#050128 tie INF CORR 537 25.1.201/MRH/1247 tie INF CORR 585 ETN(BSC)TIE&ABC#050456 tie INF CORR 998	N			1	4		0	0	28,987	0	28,987	4,928	2,145	36,060	0	36,060	N/A		1A
178			Provisional Sums - Mandatory tie Change Defined no 3, 12 & 13 Undefined no 5, 2, 7, 8 & 9 No instruction issued by tie at trigger date	23/10/08	26/09/08 16/10/08 17/11/08 20/11/08 12/12/08	25.1.201/CHB/546 tie INF CORR 244 25.1.201/MRH/798 tie INF CORR 387 25.1.201/MRH/973 tie INF CORR 508	N/A	Y	M				0	0	0	0	0	0	0	0	0	0	DPS	Various	All
179	24		Gatehouse Works to Murrayfield Stadium	16/10/2008	26/10/08 07/11/08 18/12/08 07/01/09 11/02/09 24/02/09 27/02/09 05/03/09 12/03/09 19/03/09	tie INF CORR 246 25.1.201/MRH/776 25.1.201/JH/876 tie INF CORR 537 25.1.201/MRH/1247 SDS-ULE90130-05-LET-00366 25.1.201/BOC/1723 tie INF CORR 796 25.1.201/BOC/1802 25.1.201/BOC/1922 25.1.201/BOC/2024	Y		I	4	1,2,3		92,559	0	0	0	92,559	9,256	6,849	108,664	0	108,664	VPS		5A
180			Reduced land available at Murrayfield as a result of Third Party Agreement with SRU.	30/10/08	27/10/08 05/11/08 20/01/09 27/02/09	25.1.201/JH/760 25.1.201/JH/802 SDS-ULE90130-SW-LET-01250 tie INF CORR 328 25.1.201/BOC/1306 tie INF CORR 789	N			1	4		0	0	0	0	0	0	0	0	0	N/A		5A	
181			CEC's requirement for a road closure at Roseburn Terrace requires that the Infraco installs a new controlled junction at Roseburn Street/Westfield Road/West Approach Road	28/10/2008	06/11/08	25.1.201/MRH/779 tie INF CORR 347	TBA			1	4		0	0	0	0	0	0	0	0	0	N/A		5A	
182			Edinburgh Airport Tramstop Kiosk	29/10/2008	28/08/08 22/09/08 23/10/08 18/12/08 07/01/09 03/02/09 12/02/08 27/02/09 05/03/09 27/03/09 06/04/09	tie INF CORR 122 25.1.201/JH/518 SDS-ULE90130-SW-LET-01248 25.1.201/JH/791 tie INF CORR 537 25.1.201/MRH/1247 SDS-ULE90130-SW-LET-01367 25.1.201/JH/1573 tie INF CORR 794 25.1.201/BOC/1799 tie INF CORR 1044 tie INF CORR 1150/DS	Y		M	1	1,2,3,4		11,602	0	0	0	11,602	1,160	1,299	14,062	0	14,062	N/A		7A
183			Leith Walk - temporary white lining	03/11/2008	03/12/08	25.1.201/GC/824 tie INF CORR 461	N			1	4		0	0	0	0	0	0	0	0	0	N/A		1B	

CEC00971600\_0157





ETN INFRACO NOTIFICATION of the CHANGE (INTC)  
CONFIDENTIAL

Withdrawn/Superseded  
Delay Only  
Agreed/Change Order issued

Ref	Tie	Change Order TOC	Description	Date Notified	Date of further letters	Letter Ref	Agreed in Principle?	Compensation Event	Type	Change Type	Pricing Method	Priority	Value Estimate (€000)							Allocation of Cost		Section			
													€ Submitted (Euros if CAF)							€ Agreed	€ Not Agreed		Psum or VE	Number	
													SDS	Bilfinger	Siemens	CAF	Sub-total	OH & P	Prelims						Total
184			Discovery of void around existing BT Duct - Chainage 360 RHS	13/11/2008	20/11/08 01/12/08 12/12/08 12/12/08 18/12/08 18/12/08 20/01/09 26/01/09 12/02/09 20/02/09 06/03/09 24/03/09 31/03/09	25.1.201/MRH/905 Ite INF CORR 404 25.1.201/MRH/1049 25.1.201/GC/1161 Ite INF CORR 494 25.1.201/AL/1208 Ite INF CORR 530 Ite INF CORR 611 25.1.201/AL/1364 Ite INF CORR 732 25.1.201/MRH/1662 Ite INF CORR 919 25.1.201/MRH/2050 25.1.201/DMC/P/01/2089	Y	Y	M	1	4	0	143	0	0	143	14	109	265	0	265	VPS	2	1B	
185			Discovery of Thru Ducts and Gas Main - Chainage 374 RHS	13/12/2008	20/11/08 01/12/08 12/12/08 18/12/08 18/12/08 20/01/09 26/01/09 12/02/09 20/02/09 06/03/09 16/03/09	25.1.201/MRH/906 Ite INF CORR 404 25.1.201/MRH/1050 Ite INF CORR 485 25.1.201/AL/1207 Ite INF CORR 484 Ite INF CORR 612 25.1.201/AL/1371 Ite INF CORR 700 25.1.201/MRH/1663 Ite INF CORR 918 25.1.201/MRH/1935	Y (Part)	Y	M	1	4	0	0	0	0	0	0	0	0	0	0	0	VPS	2	1B
186			CEC's requirement to amend the specification for temporary bus shelters on George Street.	03/11/2008	27/11/08 05/12/08 06/03/09	25.1.201/GC/827 Ite INF CORR 433 25.1.201/GC/1094 Ite INF CORR 853	N/A						0	0	0	0	0	0	0	0	0	0	N/A		1C
187		28	Additional excavated material at Depot	03/11/2008	27/11/08 05/12/08 12/12/08 04/03/09 11/03/09 16/03/09 23/03/09 27/03/09 02/04/09	25.1.201/GC/828 Ite INF CORR 436 25.1.201/GC/1092 Ite INF CORR 491 25.1.201/BCW/1777 25.1.201/GC/1820 Ite INF CORR 1026 25.1.201/MRH/2046 INF CORR 1090 INF CORR 1166	Y		M	1	1	0	1,345,600	0	0	1,345,600	incl	99,574	1,425,174	1,425,174	0	0	N/A		6
187.1			Additional excavated material at Depot - Investigate options to reuse additional material		13/11/08 05/12/08 12/12/08 04/03/09	Ite INF CORR 357 25.1.201/GC/1091 Ite INF CORR 491 25.1.201/BCW/1777	Y		M	1	4	0	0	0	0	0	0	0	0	0	0	0	N/A		6
188			Contaminated Material at Carricknowe	04/11/2008	06/03/09	25.1.201/GC/829 Ite INF CORR 851	TBA						0	0	0	0	0	0	0	0	0	0	N/A		5B
189			Discovery of Low Voltage Cable in Road Formation	13/11/2008	20/11/08 01/12/08 18/12/08	25.1.201/MRH/907 Ite INF CORR 404 25.1.201/MRH/1051 Ite INF CORR 484	N	Y					0	0	0	0	0	0	0	0	0	0	VPS	2	1B
190			Discovery of Gas Main - Chainage 353 RHS	13/11/2008	20/11/08 01/12/08 18/12/08	25.1.201/MRH/908 Ite INF CORR 404 25.1.201/MRH/1052 Ite INF CORR 484	N	Y					0	0	0	0	0	0	0	0	0	0	VPS	2	1B
191			Discovery of concrete encased lighting cable - Chainage 339 RHS	13/11/2008	20/11/08 01/12/08 12/12/08 18/12/08 20/01/09 26/01/09 12/02/09 20/02/09 06/03/09 16/03/09	25.1.201/MRH/909 Ite INF CORR 404 25.1.201/MRH/1053 Ite INF CORR 485 25.1.201/AL/1207 Ite INF CORR 612 25.1.201/AL/1372 Ite INF CORR 704 25.1.201/MRH/1660 Ite INF CORR 921 25.1.201/MRH/1935	Y	Y	M	1	4	0	0	0	0	0	0	0	0	0	0	0	VPS	2	1B
192		14	Discovery of Cable & Wireless ducts - Chainage 108	17/11/2008	27/11/08 01/12/08 12/12/08 18/12/08 19/12/08 20/01/09 26/01/09 22/01/09 12/02/09 18/02/09 06/03/09 16/03/09	25.1.201/MRH/910 Ite INF CORR 439 25.1.201/MRH/1054 Ite INF CORR 485 25.1.201/AL/1207 25.1.201/AL/1220 Ite INF CORR 612 25.1.201/AL/1373 Ite INF CORR 633 Ite INF CORR 705 25.1.201/MRH/1645 Ite INF CORR 923 25.1.201/MRH/1935	Y	Y	M	1	4	0	150	0	0	150	incl	11	161	161	0	0	VPS	2	1B
193			Discovery of Hydrant in Kerb line - Chainage 333 RHS	13/11/2008	20/11/08 01/12/08 12/12/08 18/12/08 20/01/09 26/01/09 12/02/09 20/02/09 06/03/09 16/03/09 31/03/09	25.1.201/MRH/911 Ite INF CORR 404 25.1.201/MRH/1055 Ite INF CORR 485 25.1.201/AL/1207 Ite INF CORR 612 25.1.201/AL/1374 Ite INF CORR 706 25.1.201/MRH/1661 Ite INF CORR 920 25.1.201/MRH/1935 25.1.201/DMC/P/01/2089	Y	Y	M	1	4	0	333	0	0	333	33	293	620	0	620	VPS	2	1B	
194			Discovery of Duct Crossings - Chainage 268 RHS	13/11/2008	20/11/08 01/12/08 18/12/08	25.1.201/MRH/912 Ite INF CORR 404 25.1.201/MRH/1056 Ite INF CORR 484	N	Y					0	0	0	0	0	0	0	0	0	0	VPS	2	1B

CEC00971600\_0158





ETN INFRA CO NOTIFICATION of the CHANGE (INTC)  
CONFIDENTIAL

Withdrawn/Superseded  
Delay Only  
Agreed/Change Order issued

Ref	Refs. Tie	Tie Change Order TCO	Description	Date Notified	Date of further letters	Letter Ref	Agreed in Principle?	Compensation Event	Type	Change Type	Pricing Method	Priority	Value Estimate (€000)						Allocation of Cost		Section			
													€ Submitted (Euros if CAF)	CAF	Sub-total	OH & P	Prelims	Total	€ Agreed	€ Not Agreed		Psum or VE	Number	
									See Notes	See Notes	See Notes	See Notes	SDS	Bilfinger	Siemens	CAF								
195			Discovery of temporary pedestrian crossing lighting ducts and junction box above formation and fouling herb line - Chainage 245-268 RHS	13/11/2008	20/11/08 01/12/08 12/12/08 18/12/08 20/01/09 26/01/09 12/02/09 20/02/09 25/02/09 06/03/09 16/03/09 27/03/09 08/04/09	25.1.201/MRH/913 tie INF CORR 404 25.1.201/MRH/1057 tie INF CORR 485 25.1.201/IL/1207 tie INF CORR 612 25.1.201/IL/1375 tie INF CORR 708 25.1.201/MRH/1664 25.1.201/DM/P/01/1491 tie INF CORR 917 25.1.201/MRH/1935 INF CORR 1123 25.1.201/3C/2234	Y	Y	M	1	4	0	559	0	0	559	96	426	1,041	611	430	VPS	2	1B
196			Little King Streetworks required by CEC outside the Limits of Deviation.	06/11/08	30/10/08 07/11/08 27/11/08 28/01/09 10/02/09 12/02/09 27/02/09 05/03/09 27/03/09 03/04/09 07/04/09	SDS-ULE90130-01-LET-00652 25.1.201/JH/867 25/12/201/JH/876 tie INF CORR 437 SDS-ULE90130-01-LET-00898 SDS-ULE90130-SW-LET-01379 25.1.201/B/C/1570 tie INF CORR 794 25.1.201/B/C/1799 INF CORR 1041 25.1.201/JH/2162 25.1.201/B/C/2185	Y		I	1	4	9,172	0	0	9,172	917	1,027	11,116	0	11,116	N/A		1C	
197			Cycle path near Gyle tramstop. Widening of shared cycleway/footway required by CEC outside the Limits of Deviation.	07/11/08	30/10/08 07/11/08 05/12/08 28/01/09 10/02/09 12/02/09 20/02/09 25/02/09 26/02/09 27/02/09 05/03/09	SDS-ULE90130-05-LET-00347 25.1.201/JH/870 25.1.201/JH/876 tie INF CORR 457 SDS-ULE90130-05-LET-00360 SDS-ULE90130-SW-LET-01379 25.1.201/JH/1581 tie INF CORR 777 25.1.201/B/C/1799 25.1.201/JH/1749 tie INF CORR 794 25.1.201/B/C/1799	Y		I	1	4	10,346	0	0	10,346	1,035	1,159	12,539	0	12,539	N/A		5	
198	26		Gogar Roundabout Lighting. Full re-lighting required by CEC - a portion of the works is outside the Limits of Deviation.	10/11/08	30/01/08 07/11/08 26/11/08 03/11/08 03/12/08 17/12/08 18/12/08 10/02/09 12/02/09 27/02/09 05/03/09 26/03/09 04/04/09 07/04/09	SDS-ULE90130-05-LET-00348 25.1.201/JH/876 25.1.201/JH/877 tie INF CORR 429 25.1.201/B/C/1078 25.1.201/B/C/1078 SDS-ULE90130-05-LET-00361 tie INF CORR 487 SDS-ULE90130-SW-LET-01379 25.1.201/B/C/1567 tie INF CORR 794 25.1.201/B/C/1799 INF CORR 1040 25.1.201/JH/2163 25.1.201/B/C/2189	Y		I	1	4	4,247	0	0	4,247	425	476	5,147	0	5,147	N/A		5	
199			IFC Drawing changes - Balgreen bridge S22a	06/11/2008	13/11/08 19/11/08 26/01/09 02/02/09 03/02/09 06/03/09 06/03/09 18/03/09 18/03/09	25.1.201/O/846 tie INF CORR 362 25.1.201/MRH/967 tie INF CORR 631 25.1.201/O/1454 25.1.201/MRH/1467 tie INF CORR 884 tie INF CORR 902 tie INF CORR 883 25.1.201/MRH/1992 25.1.201/MRH/1993	TBA	Y	M	1	1,2,3	0	0	0	0	0	0	0	0	0	0	N/A		5A
200			IFC Drawing changes - Saughton Bridge	06/11/2008	13/11/08 19/11/08 26/01/09 09/02/09	25.1.201/O/847 tie INF CORR 372 25.1.201/MRH/965 tie INF CORR 632 25.1.201/MRH/1545	TBA		M	1	1,2,3	0	0	0	0	0	0	0	0	0	0	N/A		5B
201			IFC Drawing changes - Depot Access Bridge	06/11/2008	12/11/08 13/11/08 19/11/08 19/11/08 20/01/09 26/01/09 02/02/09 03/02/09 03/02/09	25.1.201/O/848 tie INF CORR 368 tie INF CORR 363 25.1.201/MRH/963 25.1.201/MRH/966 tie INF CORR 594 25.1.201/O/1368 25.1.201/JH/1457 25.1.201/JH/1457 25.1.201/MRH/1470	TBA	Y	M	1	1,2,3	0	0	0	0	0	0	0	0	0	0	N/A		5C
202			IFC Drawing changes - Gogarburn Culverts 1, 2 and 3	06/11/2008	13/11/08 19/11/08 02/02/09 03/02/09 03/02/09 20/02/09 24/02/09 06/03/09 19/03/09 31/03/09	25.1.201/O/849 tie INF CORR 364 25.1.201/MRH/969 25.1.201/O/1455 25.1.201/JH/1458 25.1.201/MRH/1468 tie INF CORR 769 25.1.201/MRH/1729 tie INF CORR 898 25.1.201/MRH/2015 25.1.201/O/2141	TBA	Y	M	1	1,2,3	0	35,661	0	0	35,661	incl	11,768	47,429	0	47,429	N/A		7
203			IFC Drawing changes - Gogarburn Depot	06/11/2008	13/11/08 17/11/08 19/11/08 19/11/08 20/01/09 26/01/09 07/04/09	25.1.201/O/850 tie INF CORR 369 tie INF CORR 367 25.1.201/MRH/961 25.1.201/IL/964 tie INF CORR 592 25.1.201/O/1392 tie INF CORR 1159	TBA	Y	M	1	1,2,3	0	0	0	0	0	0	0	0	0	0	N/A		6
204			IFC Drawing changes - Roads , Streetlighting , Drainage Section 5B	06/11/2008	04/12/08 09/12/08 19/02/09	25.1.201/O/851 tie INF CORR 469 25.1.201/MRH/1107 tie INF CORR 772	TBA	Y	M	1	1,2,3	0	0	0	0	0	0	0	0	0	0	N/A		5B

CEC00971600\_0159





ETN INFRACO NOTIFICATION of tie CHANGE (INTC)  
CONFIDENTIAL

Withdrawn/Superseded  
Delay Only  
Agreed/Change Order issued

Ref	Tie	tie Change Order TCO	Description	Date Notified	Date of further letters	Letter Ref	Agreed in Principle?	Compensation Event	Type	Change Type	Pricing Method	Priority	Value Estimate (€000)							Allocation of Cost		Section					
													€ Submitted (Euros if CAF)	€ Not Agreed	Psum or VE	Number	See Notes	See Notes	See Notes	See Notes	See Notes		See Notes	See Notes	See Notes	See Notes	See Notes
													CAF	Sub-total	OH & P	Prelims	Total	€ Agreed	€ Not Agreed			See Notes					
													SDS	Bilfinger	Siemens							See Notes					
205			IFC Drawing changes - Roads , Streetlighting , Drainage Section 5C	06/11/2008	04/12/08 09/12/08 19/02/09 25/02/08	25.1.2010/O/852 tie INF CORR 470 25.1.2010/MRH/1106 tie INF CORR 771 25.1.2010/O/1736	TBA	Y	M	1	1,2,3		0	0	0	0	0	0	0	0	0	0	0	N/A		5C	
206			IFC Drawing changes - Barkhead Tramstop	06/11/2008	21/01/09 26/01/09 02/02/09	tie INF CORR 601 25.1.2010/MRH/1391 25.1.2010/O/1452	TBA		M	1	1,2,3		0	0	0	0	0	0	0	0	0	0	0	N/A		5B	
207	21		Scottish Gas Networks - Trial Investigations to protect gas main at Culvert no.2	30/10/2008	18/12/08 07/01/09 09/01/09 21/01/09 20/01/09 23/01/09 10/02/09 11/02/09 16/02/09 19/02/09 25/02/09 11/03/09 17/03/09 27/03/09 03/04/09 07/04/09 09/04/09	tie INF CORR 233 tie INF CORR 537 25.1.2010/MRH/1247 25.1.2010/L/1262 25.1.2010/MRH/1319 tie INF CORR 613 25.1.2010/L/1349 tie INF CORR 703 tie INF CORR 742 25.1.2010/L/1632 25.1.2010/MRH/1670 e-mails tie-BSC tie INF CORR 949 25.1.2010/MRH/1966 INF CORR 1125 tie INF CORR 1131 25.1.2010/MRH/2193 25.1.2010/L/2248	Y	Y	L	1	4		13,162	0	0	13,162	incl.	4,198	17,360	14,123	3,237	VPS	2	7			
208			Leith Walk Christmas Embargo	04/11/2008	05/11/08 17/11/08 20/11/08 29/11/08 27/01/09 12/02/09 17/02/09 06/03/09 06/03/09 10/03/09 12/03/09 17/03/09 24/03/09 25/03/09 01/04/09	tie INF CORR 299 (a) 25.1.2010/MRH/841 tie INF CORR 386 Email SS/L Embargo Works 25.1.2010/MRH/1036 25.1.2010/SC/1408 25.1.2010/CHBB/1592 25.1.2010/CHBB/1766 tie INF CORR 843 tie INF CORR 905 25.1.2010/CHBB/1863 tie INF CORR 1024 25.1.2010/MRH/1968 tie INF CORR 966 25.1.2010/CHBB/2076 25.1.2010/CHBB/2153	Y	Y	L	1	4		0	0	0	0	0	0	0	0	0	0	0	0	N/A		1B
209			IFC Drawing changes - McDonald Road and Balfour Street Tram Stops	06/12/2008	13/11/08 19/11/08 20/01/09 23/01/09	25.1.2010/O/854 tie INF CORR 381 25.1.2010/MRH/960 tie INF CORR 591 25.1.2010/O/1966	TBA	Y	M	1	1,2,3		0	0	0	0	0	0	0	0	0	0	0	N/A		1B	
210			IFC Drawing changes - Road ,Street Lighting,Landscaping and Drainage Section 1B	06/12/2008	13/11/08 19/11/08 20/01/09	tie INF CORR 375 25.1.2010/MRH/962 tie INF CORR 593	TBA	Y	M	1	1,2,3		0	0	0	0	0	0	0	0	0	0	0	N/A		1B	
211			IFC Drawing changes - Haymarket Tram Stop	06/12/2008	13/11/08 19/11/08 20/01/09 23/01/09 03/02/09 10/02/09 06/03/09 24/03/09	25.1.2010/O/856 tie INF CORR 376 25.1.2010/MRH/958 tie INF CORR 589 25.1.2010/O/1947 25.1.2010/H/1464 SDS-ULE90130-SW-LET-01378 tie INF CORR 985 25.1.2010/O/2062	TBA	Y	M	1	1,2,3		0	0	0	0	0	0	0	0	0	0	0	N/A		2A	
212			IFC Drawing changes - Roads and Street Lighting,Landscap and Drainage Section 2A	06/12/2008	13/11/08 19/11/08 20/01/09	25.1.2010/O/857 tie INF CORR 377 25.1.2010/MRH/959 tie INF CORR 590	TBA	Y	M	1	1,2,3		0	0	0	0	0	0	0	0	0	0	0	N/A		2A	
213			IFC Drawing changes - Haymarket Station Substation	06/11/2008	13/11/08 13/11/08 19/11/08 02/02/09	25.1.2010/O/858 tie INF CORR 359 tie INF CORR 378 25.1.2010/MRH/957 25.1.2010/O/1453	TBA	Y	M	1	1,2,3		0	0	0	0	0	0	0	0	0	0	0	N/A		2A	
214			Allow bus traffic to continue to run westbound along Princes Street during construction of tram track	06/11/2008	11/11/08 28/11/08 18/03/09 07/04/09	tie INF CORR 349 25.1.2010/MRH/894 25.1.2010/MRH/1037 tie INF CORR 1023 25.1.2010/MRH/2199	Y	N/A	L	1	3		0	0	0	0	0	0	0	0	0	0	0	N/A		1C	
215	90		Demolition and alteration of existing Bus Depot at Leith Walk	13/11/2008	09/12/08 30/01/09 19/02/09 24/02/09 25/02/09 27/03/09	25.1.2010/O/902 tie INF CORR 428 25.1.2010/O/1436 tie INF CORR 749 25.1.2010/O/1730 tie INF CORR 780 INF CORR 1119	Y		L	1	3		0	0	0	0	0	0	0	0	0	0	0	N/A		1B	
216			Discovery of alkathene water pipe above formation level - Chainage 265 RHS	13/11/2008	20/11/08 01/12/08 12/12/08 19/12/08 20/01/09 26/01/09 12/02/09 20/02/09 31/03/09	25.1.2010/MRH/914 tie INF CORR 404 25.1.2010/MRH/1058 tie INF CORR 485 25.1.2010/L/1207 tie INF CORR 612 25.1.2010/L/1376 tie INF CORR 709 25.1.2010/MRH/1665 25.1.2010/DMC/P/01/2081	Y	Y	L	1	4		0	459	0	0	459	46	349	854	0	854	VPS	2	1B		
217			Discovery of Thus ducts above formation level and fouling ker line - Chainage 250 RHS.	13/11/2008	20/11/08 01/12/08 12/12/08 18/12/08 20/01/09 26/01/09 12/02/09 20/02/09 07/04/09	25.1.2010/MRH/915 tie INF CORR 404 25.1.2010/MRH/1059 tie INF CORR 485 25.1.2010/L/1207 tie INF CORR 612 25.1.2010/L/1377 tie INF CORR 710 25.1.2010/MRH/1658 tie INF CORR 1082	Y	Y	L	1	4		0	0	0	0	0	0	0	0	0	0	0	0	VPS	2	1B

CEC00971600\_0160





ETN INFRA CO NOTIFICATION of tie CHANGE (INTC)  
CONFIDENTIAL

Withdrawn/Superseded  
Delay Only  
Agreed/Change Order issued

Ref	Tie	tie Change Order TCO	Description	Date Notified	Date of further letters	Letter Ref	Agreed in Principle?	Compensation Event	Type	Change Type	Pricing Method	Priority	Value Estimate (€000)						Allocation of Cost		Section					
													€ Submitted (Euros if CAF)	€ Not Agreed	Psum or VE	Number	See Notes	See Notes	See Notes	See Notes		See Notes	See Notes	See Notes	See Notes	See Notes
218			Discovery of 2 No. LV and 1 No. LV cables above formation level - Chainage 182 RHS.	13/11/2008	20/11/08 01/12/08 12/12/08 19/12/08 20/01/09 26/01/09 12/02/09 20/02/09 04/03/09 06/03/09 16/03/09 27/03/09 06/04/09	25.1.201/MRH/916 tie INF CORR 404 25.1.201/MRH/1060 tie INF CORR 485 25.1.201/AL/1207 tie INF CORR 612 25.1.201/AL/1378 tie INF CORR 711 25.1.201/MRH/1666 25.1.201/DMC/P/01/1750 tie INF CORR 912 25.1.201/MRH/1935 INF CORR 1128 25.1.201/GC/2228	Y	Y	I	1	4	0	229	0	0	229	23	174	425	256	169	VPS	2	1B		
219			Discovery of Hydrant above formation level - Chainage 177 RHS	13/11/2008	20/11/08 01/12/08 18/12/08	25.1.201/MRH/917 tie INF CORR 404 25.1.201/MRH/1062 tie INF CORR 484	N	Y	I	1	4	0	0	0	0	0	0	0	0	0	0	0	VPS	2	1B	
220			Discovery of Water connection pipework above formation level - Chainage 161 RHS	13/11/2008	20/11/08 01/12/08 12/12/08 19/12/08 20/01/09 26/01/09 12/02/09 20/02/09 06/03/09 16/03/09 31/03/09	25.1.201/MRH/919 tie INF CORR 404 25.1.201/MRH/1061 tie INF CORR 485 25.1.201/AL/1207 tie INF CORR 612 25.1.201/AL/1379 tie INF CORR 707 25.1.201/MRH/1667 tie INF CORR 911 25.1.201/MRH/1935 25.1.201/DMC/P/01/2079	Y	Y	I	1	4	0	68	0	0	68	7	52	127	0	127	0	127	VPS	2	1B
221			Discovery of MUDFA excavations containing water main and connections fouling the new kerb line - Chainage 125 RHS	13/11/2008	20/11/08 01/12/08 18/12/08 26/01/09	25.1.201/MRH/919 tie INF CORR 404 25.1.201/MRH/1063 tie INF CORR 529 tie INF CORR 600	Y	Y	I	1	4	0	0	0	0	0	0	0	0	0	0	0	0	VPS	2	1B
222			Discovery of valves and a hydrant fouling the new kerb line - Chainage 120 RHS	13/11/2008	20/11/08 01/12/08 12/12/08 19/12/08 20/01/09 26/01/09 10/02/09 16/02/09	25.1.201/MRH/920 tie INF CORR 404 25.1.201/MRH/1064 tie INF CORR 495 25.1.201/AL/1207 tie INF CORR 612 25.1.201/AL/1380 tie INF CORR 712 25.1.201/MRH/1629	N	Y	I	1	4	0	0	0	0	0	0	0	0	0	0	0	0	VPS	2	1B
223			Discovery of stone culvert - Chainage 100 RHS	17/11/2008	20/11/08 01/12/08 12/12/08 18/12/08 20/01/09 26/01/09 12/02/09 20/02/09 04/03/09 06/03/09 16/03/09 27/03/09 07/04/09 08/04/09	25.1.201/MRH/921 tie INF CORR 411 25.1.201/MRH/1065 tie INF CORR 485 25.1.201/AL/1207 tie INF CORR 612 25.1.201/AL/1381 tie INF CORR 713 25.1.201/MRH/1668 25.1.201/DMC/P/01/1640 tie INF CORR 910 25.1.201/MRH/1935 INF CORR 1128 25.1.201/DMC/P/01/2096 25.1.201/GC/2228	Y	Y	I	1	4	0	2,362	0	0	2,362	236	1,797	4,395	1,018	3,378	0	3,378	VPS	2	1B
224			Discovery of Scottish Power cables - Chainage 90 RHS	17/11/2008	20/11/08	tie INF CORR 411	N/A						0	0	0	0	0	0	0	0	0	0	VPS	2	1B	
225			Repairs required to footpath to allow pedestrian access - Chainage 170 RHS	17/11/2008	27/11/08 09/01/09 20/01/09 26/01/09 29/02/09	25.1.201/MRH/923 tie INF CORR 438 25.1.201/AL/1266 tie INF CORR 587 25.1.201/AL/1370 tie INF CORR 781	Y		I	1	4	0	264	0	0	264	incl	211	474	0	474	0	474	N/A		1B
226			Operational Design Review of Depot - changes arising	25/11/2008	20/02/09 11/03/09	tie INF CORR 400 tie INF CORR 767 25.1.201/JH/1897	TBA						0	0	0	0	0	0	0	0	0	0	N/A		6	
227			Operational Design Review of Haymarket - changes arising	25/11/2008	20/02/09	tie INF CORR 399 tie INF CORR 767	TBA						0	0	0	0	0	0	0	0	0	0	N/A		2A	
228			Relocation of bus stop, overwith LOD at Princes Mall	01/12/08	25/11/08 09/12/08 12/12/08 30/01/09 03/03/09 05/03/09 23/03/09 01/04/09	SDS-ULE90130-SW-LET-01299 25.1.201/MRH/1044 tie INF CORR 483 25.1.201/MRH/1138 25.1.201/JH/1435 tie INF CORR 906 25.1.201/MRH/1812 tie INF CORR 1071 25.1.201/GC/2147	Y		I	1	4	0	0	0	0	0	0	0	0	0	0	0	0	N/A		1C3
229			Picardy Place design changes	01/10/08	01/10/08 25/11/08	SDS-ULE90130-01-LET-00820 SDS-ULE90130-01-LET-00888	TBA		M	1	1,2,3,4	0	0	0	0	0	0	0	0	0	0	0	N/A		1C	
230			IFC Drawing Changes - Tower Bridge Structure	11/12/2008	06/03/09 18/03/09	25.1.201/IO/1192 tie INF CORR 699 25.1.201/MRH/1995	TBA	Y	M	1	1,2,3	0	0	0	0	0	0	0	0	0	0	0	N/A		1A	
231			IFC Drawing Changes - Section 1C drainage	12/12/2008	13/01/09 23/01/09 18/02/09 23/02/09 05/03/09	25.1.201/IO/1143 tie INF CORR 581 25.1.201/IO/1349 tie INF CORR 753 25.1.201/MRH/1711 25.1.201/IO/1804	TBA	Y	M	1	1,2,3	0	0	0	0	0	0	0	0	0	0	0	N/A		1C	
232			IFC Drawing Changes - Section 1C road design	12/12/2008	13/01/09 05/03/09	25.1.201/IO/1144 tie INF CORR 581 25.1.201/IO/1806	TBA	Y	M	1	1,2,3	0	0	0	0	0	0	0	0	0	0	0	N/A		1C	
233			IFC Drawing Changes - Section 1C lighting layout	12/12/2008	13/01/09 05/03/09 12/03/09 18/03/09	25.1.201/IO/1145 tie INF CORR 581 25.1.201/IO/1805 tie INF CORR 981 25.1.201/IO/1957	TBA	Y	M	1	1,2,3	0	0	0	0	0	0	0	0	0	0	0	N/A		1C	

CEC00971600\_0161





ETN INFRACO NOTIFICATION of tie CHANGE (INTC)  
CONFIDENTIAL

Withdrawn/Superseded  
Delay Only  
Agreed/Change Order issued

Ref	Tie	Change Order TCO	Description	Date Notified	Date of further letters	Letter Ref	Agreed in Principle?	Compensation Event	Type	Change Type	Pricing Method	Priority	Value Estimate (€000)							Allocation of Cost		Section					
													€ Submitted (Euros if CAF)							€ Agreed	€ Not Agreed		Psum or VE	Number			
													See Notes	See Notes	See Notes	See Notes	See Notes	See Notes	See Notes						CAF	Sub-total	OH & P
234			Leith Walk (Section 1B) Groundworks - Move THUS ducts fouling kerbline to new loading bay - Ch 345 - 365	17/11/2008	20/11/08 01/12/08 12/12/08 19/12/08 20/01/09 26/01/09 12/02/09 20/02/09 06/03/09 16/03/09	25.1.201/GC/943 tie INF CORR 411 25.1.201/MRH/1067 tie INF CORR 495 25.1.201/JL/1207 tie INF CORR 612 25.1.201/L/1382 tie INF CORR 714 25.1.201/MRH/1669 tie INF CORR 909 25.1.201/MRH/1935	Y	Y	I	1	4											VPS	2	1B			
235			Leith Walk (Section 1B) Groundworks - Move BT ducts fouling kerbline to new loading bay Ch 345 - 365	17/11/2008	20/11/08 01/12/08 12/12/08 19/12/08 20/01/09 26/01/09 12/02/09 20/02/09	25.1.201/GC/944 tie INF CORR 411 25.1.201/MRH/1068 tie INF CORR 495 25.1.201/JL/1207 tie INF CORR 612 25.1.201/L/1383 tie INF CORR 715 25.1.201/MRH/1659	Y		I	1	4												VPS	2	1B		
236			Options for drainage outfall consent at the Airport		17/11/08 26/11/08 04/12/08 17/02/09 25/02/09 03/03/09 20/03/09	25.1.201/BOC/942 tie INF CORR 418 25.1.201/BOC/1086 25.1.201/BOC/1636 tie INF CORR 782 25.1.201/BOC/1765 25.1.201/BOC/2127	TBA		I	1	1,2,3												N/A		7A		
237		10	Move site boundary fencing at Haymarket Car Park to facilitate transfer of rugby supporters on 08 and 15/11/08.	13/11/2008	10/12/08 17/12/08	25.1.201/L/1120 tie INF CORR 536	Y		I	1	4			791			791		0	59	850	850	0	VPS	1	2A	
238			Temporary Traffic Lights opposite Manderston Street required because MUDFA works are incomplete	12/12/2008	12/12/08 23/01/09 30/01/09 06/02/09 12/02/09 20/02/09 31/03/09 03/04/09	25.1.201/GC/956 25.1.201/MRH/1147 tie INF CORR 626 tie INF CORR 608 25.1.201/MRH/1500 tie INF CORR 718 25.1.201/MRH/1690 25.1.201/DMcP/01/2077 tie INF CORR 1144	Y	Y	I	1	4				11,182			11,182	1,118	1,778	14,078	0	14,078	N/A		1B	
239		29	Additional Trial Holes at CH145 - CH160 (Section 1B)	20/11/2008	09/12/08 30/01/09	25.1.201/GC/975 INF CORR 481 25.1.201/GC/1443	Y	N	I	1	4				440			440	44	352	836	0	836	N/A		1B	
240			Removal and Reinstatement of BT Phone Box	05/01/2009	01/12/08 12/12/08 12/12/08 19/12/08 19/12/08 22/12/08 26/01/09 26/01/09 11/02/09 04/03/09 12/03/09	25.1.201/GC/980 25.1.201/MRH/1047 25.1.201/GC/1164 tie INF CORR 513 tie INF CORR 532 25.1.201/GC/1227 25.1.201/MRH/1296 tie INF CORR 599 tie INF CORR 627 25.1.201/L/1550 25.1.201/GC/1795 tie INF CORR 987	Y (Part)	N	I	1	4													VPS	2	1B	
241			MUDFA has commenced works on Bankhead Drive preventing Infraco progress in the area until its works are complete.	20/11/2008	12/12/08 30/01/09 06/02/09 06/03/09 16/03/09	25.1.201/GC/986 25.1.201/MRH/1149 tie INF CORR 609 25.1.201/MRH/1501 tie INF CORR 841 25.1.201/MRH/1934	N/A	Y																N/A		5B	
242			TPO Presentations by SDS to the public during September 2008 and changes to drawings arising from the consultation process.	20/11/08	18/11/08 21/11/08 21/11/08 04/02/09 04/02/09 25/02/09 25/02/09 11/03/09 16/03/09 18/03/09	SDS-ULE90130-SW-LET-01274 25.1.201/MRH/965 SDS-ULE90130-01-LET-0881 SDS-ULE90130-SW-LET-01289 25.1.201/JH/1462 25.1.201/JH/1461 SDS-ULE90130-SW-LET-01412 SDS-ULE90130-SW-LET-01413 tie INF CORR 959 25.1.201/BOC/1946 25.1.201/JH/2009	N	N	I	1	1													N/A		All	
243			Forth Ports Substation - lack of as-built information	24/11/2008	21/11/08 02/12/08 05/12/08 10/02/09 12/02/09 27/03/09 07/04/09	SDS-ULE90130-01-LET-0880 25.1.201/MRH/1000 tie INF CORR 445 25.1.201/BOC/1093 SDS-ULE90130-SW-LET-01379 25.1.201/BOC/1566 tie INF CORR 1096 25.1.201/JH/2181	Y		I	1	1				7,045				7,045	794	789	8,538	0	8,538	N/A		1A4
244			Building Fixing Owner Agreements - Information required to support Court Proceedings (Clause 20.8 of Infraco Contract)	26/11/2008	28/11/08 11/12/08 15/12/08 09/01/09 20/01/09 23/01/09 26/01/09 28/01/09 28/01/09 04/02/09 10/02/09 12/02/09 12/02/09 12/02/09 20/02/09 27/03/09 03/04/09	tie INF CORR 427 25.1.201/MRH/1021 SDS-ULE90130-01-LET-00894 25.1.201/BOC/1168 tie INF CORR 570 SDS-ULE90130-01-LET-00917 25.1.201/BOC/1350 25.1.201/BOC/1369 SDS-ULE90130-01-LET-00924 SDS-ULE90130-SW-LET-01354 25.1.201/JH/1463 SDS-ULE90130-SW-LET-01379 25.1.201/BOC/1579 tie INF CORR 745 tie INF CORR 719 25.1.201/MRH/1692 tie INF CORR 1093 25.1.201/JH/2171	Y	Y	I	1	4				14,645				14,645	1,465	1,640	17,750	0	17,750	VPS	1	All

CEC00971600\_0162





ETN INFRA CO NOTIFICATION of tie CHANGE (INTC)  
CONFIDENTIAL

Withdrawn/Superseded  
Delay Only  
Agreed/Change Order issued

Ref	Tie	tie Change Order TCO	Description	Date Notified	Date of further letters	Letter Ref	Agreed in Principle?	Compensation Event	Type	Change Type	Pricing Method	Priority	Value Estimate (€000)						Allocation of Cost		Section					
													€ Submitted (Euros if CAF)	Sub-total	OH & P	Prelims	Total	€ Agreed	€ Not Agreed	Psum or VE		Number				
245			Accommodation Works SRU Murrayfield - Major Event Notification	03/12/2008	05/12/08 12/12/08 16/12/08 16/12/08 06/03/09 20/03/09	tie INF CORR 380 25.1.201/MRH/1099 tie INF CORR 510 25.1.201/MRH/1184 25.1.201/MRH/1195 tie INF CORR 900 25.1.201/MRH/2029	TBA	Y	I	4	3		0	0	0	0	0	0	0	0	0	VPS	1	5A		
246			Notified Departure due to the issue of SDS Design programme V36	10/12/2008	19/03/09 06/04/09	25.1.201/GC/1121 tie INF CORR 1059 25.1.201/GC/2165	N/A						0	0	0	0	0	0	0	0	0	N/A		All		
247			Notified Departure due to the issue of SDS Design programme V37	10/12/2008	19/03/09	25.1.201/GC/1122 tie INF CORR 1059	N/A						0	0	0	0	0	0	0	0	0	N/A		All		
248			Notified Departure due to the issue of SDS Design programme V38	10/12/2008	19/03/09	25.1.201/GC/1123 tie INF CORR 1059	N/A						0	0	0	0	0	0	0	0	0	N/A		All		
249			Notified Departure due to the issue of SDS Design programme V39	10/12/2008	19/03/09	25.1.201/GC/1124 tie INF CORR 1059	N/A						0	0	0	0	0	0	0	0	0	0	N/A		All	
251			IFC Drawing Changes - Section 1C OLE Layout	12/12/2008	25/02/09 04/03/09 23/03/09 24/03/09 01/04/09	25.1.201/O/1148 tie INF CORR 783 25.1.201/MRH/1792 tie INF CORR 1072 tie INF CORR 1069 25.1.201/GC/2152	TBA	Y	M	1	1,2,3		0	0	0	0	0	0	0	0	0	0	N/A		1C	
252			IFC Drawing Changes - Section 1C Track Horizontal Alignment	12/12/2008	25/02/09 03/03/09 10/03/09 25/03/09	25.1.201/O/1150 tie INF CORR 784 25.1.201/MRH/1782 tie INF CORR 956 25.1.201/MRH/2092	TBA	Y	M	1	1,2,3		0	0	0	0	0	0	0	0	0	0	0	N/A		1C
253			IFC Drawing Changes - Section 1C Track Vertical Alignment	12/12/2008	12/01/09 05/03/09 07/04/09	25.1.201/O/1151 tie INF CORR 567 25.1.201/O/1807 tie INF CORR 1157	TBA	Y	M	1	1,2,3		0	0	0	0	0	0	0	0	0	0	0	N/A		1C
254			IFC Drawing Changes - Section 1C Traffic Management	12/12/2008	06/03/09 24/03/09 02/04/09	25.1.201/O/1153 tie INF CORR 862 25.1.201/O/2063 tie INF CORR 1158	TBA	Y	M	1	1,2,3		0	0	0	0	0	0	0	0	0	0	0	N/A		1C
255			Removal by others of materials from central reserve on Princes Street	12/12/2008	25/02/09	25.1.201/GC/1141 tie INF CORR 781	TBA	N		1	3		0	0	0	0	0	0	0	0	0	0	N/A		1C,1D	
256			Additional Trial Holes at Leith Walk - Chaugages 145 to 160	09/12/2008		tie INF CORR 481	N/A	N/A					0	0	0	0	0	0	0	0	0	0	N/A		1B	
257	28		Feasibility Study (Design Only) Forth Ports access to ADM Milling	09/12/2008	02/12/08 12/12/08 12/12/08 17/12/08 12/01/09 20/01/09 29/01/09 09/02/09 10/02/09 18/02/09 27/02/09 05/03/09 23/03/09 02/04/09 03/04/09 08/04/09	25.1.201/MRH/1074 tie INF CORR 480 25.1.201/MRH/1074 25.1.201/JH/1156 24.1.201/JH/1196 tie INF CORR 572 25.1.201/BOC/1305 tie INF CORR 551 25.1.201/BOC/1523 SDS-ULE90130-SW-LET-01381 25.1.201/BOC/1646 tie INF CORR 794 25.1.201/BOC/1799 25.1.201/BOC/2041 tie INF CORR 1148 SDS-ULE90130-SW-LET-01499 25.1.201/JH/2219	Y		I	1	1		1,764	0	0	0	1,764	176	131	2,071	0	2,071	N/A		1A	
258	27		Accommodation Works Future Proofing on behalf of New Inglston Limited and Highland Properties Limited (Scotland)	09/12/2008	12/12/08 12/12/08 30/01/09 04/02/09 25/02/09 18/03/09 23/03/09 30/03/09 03/04/09 08/04/09	tie INF CORR 471 25.1.201/MRH/1146 25.1.201/JH/1157 tie INF CORR 846 25.1.201/MRH/1475 ULE90130-SW-LET-01407 SDS-ULE90130-SW-LET-01463 25.1.201/JH/2045 25.1.201/L/2128 SDS-ULE90130-SW-LET-01497 25.1.201/L/2217	Y	N	I	4	1,2,3		43,832	945,376	0	0	989,208	4,383	315,218	1,308,809	0	1,308,809	VPS	1	7	
259			Cycleway at Edinburgh Park Station repositioned outwith the LOD	12/12/08	11/09/08 06/10/08 10/12/08 20/10/08 21/11/08 15/12/08 30/01/09 06/03/09 24/03/09 03/04/09	SDS-ULE90130-05-LET-00327 25.1.201/MRH/615 INF CORR 247 SDS-ULE90130-05-LET-00364 25.1.201/MRH/1152 25.1.201/BOC/1166 tie INF CORR 850 25.1.201/JH/894 25.1.201/JH/1432 25.1.201/BOC/2119 SDS-ULE90130-05-LET-00383	TBA			1	1,2,3		0	0	0	0	0	0	0	0	0	0	0	N/A		5B
260	34	7	Relocate existing Control Box - Section 1B	12/12/2008	12/01/09 23/01/09 23/01/09 12/02/09 06/03/09 26/03/09 27/03/09 08/04/09	25.1.201/GC/1158 tie INF CORR 569 25.1.201/L/1351 tie INF CORR 623 25.1.201/SK/P/01/1471 tie INF CORR 901 25.1.201/SK/P/01/2094 INF CORR 1128 25.1.201/GC/2228	Y	N	I	1	4		0	1,086	0	0	1,086	109	868	2,062	1,110	952	N/A		1B	
261			IFC Drawing Changes - Section 1B - Balfour Street Tram Stop	12/12/2008	16/03/09	25.1.201/O/1159 tie INF CORR 989	Y	N	M	1	1,2,3		0	0	0	0	0	0	0	0	0	0	N/A		1B	
262			IFC Drawing Changes - Section 5B - Track Drainage	02/03/2009	12/03/09 19/03/09	25.1.201/L/1767 tie INF CORR 996 25.1.201/L/2014	TBA	N	M	1	1,2,3		0	0	0	0	0	0	0	0	0	0	N/A		5B	
263			IFC Drawing Changes - Section 1A - Victoria Dock Bridge	15/12/2008	06/03/09 13/03/09 27/03/09	25.1.201/O/1170 tie INF CORR 845 25.1.201/MRH/1926 INF CORR 1085	TBA	N	M	1	1,2,3		0	0	0	0	0	0	0	0	0	0	N/A		1A	

CEC00971600\_0163





ETN INFRA CO NOTIFICATION of the CHANGE (INTC)  
CONFIDENTIAL

Withdrawn/Superseded  
Delay Only  
Agreed/Change Order issued

Ref	Tie	tie Change Order TCO	Description	Date Notified	Date of further letters	Letter Ref	Agreed in Principle?	Compensation Event	Type	Change Type	Pricing Method	Priority	Value Estimate (€000)						Allocation of Cost		Section						
													€ Submitted (Euros if CAF)	Sub-total	OH & P	Prelims	Total	€ Agreed	€ Not Agreed	Psum or VE		Number					
													SDS	Bilfinger	Siemens	CAF											
													See Notes	See Notes	See Notes	See Notes									See Notes		
265			Accommodation Works Section 2A Access Retaining Wall	16/12/2008	23/02/09 11/03/09 17/03/09 07/04/09	25.1.2011/O/1212 25.1.2011/L/1639 tie INF CORR 941 25.1.2011/L/1954 tie INF CORR 1151	N	N		4	1,2,3		0	66,291	0	0	66,291	incl	25,389	91,680	0	91,680	VPS		2A		
266		25	Undertake Monthly Track Monitoring of Network Rail Infrastructure on East Coast North Line in vicinity of Gogar Depot	16/12/2008	19/12/09 17/02/09 26/02/09 26/02/09 27/02/09 03/03/09 05/03/09 05/03/09 11/03/09 27/03/09	tie INF CORR 525 25.1.2011/GC/1224 25.1.2011/GC/1534 tie e-mail BB e-mail tie INF CORR 792 25.1.2011/GC/1784 25.1.2011/GC/1813 E-mail tie-BBSC 25.1.2011/GC/1813 INF CORR 1109	Y	N	I	1	3		0	3,980	0	0	3,980	398	295	4,673	4,673	0	0	N/A		6	
267			Carry out Scottish Water Diversion at Gogar Roundabout	18/12/2008	05/01/09 05/01/09 09/01/09 09/01/09 12/01/09 29/01/09 06/02/09	tie INF CORR 498 25.1.2011/MRH/1234 25.1.2011/MRH/1238 25.1.2011/L/1260 25.1.2011/L/1261 25.1201/L/1269 tie INF CORR 647 25.1.2011/MRH/1497	Y	Y	M	1	3		0	0	0	0	0	0	0	0	0	0	0	0	VPS		5C
268			Carry out Scottish Power Diversion at Gogar Roundabout	16/12/2008	05/01/09 05/01/09 12/01/09 15/01/09 20/01/09 26/01/09 29/01/09 30/01/09 06/02/09 06/02/09 18/02/09 23/02/09 04/03/09 06/03/09 16/03/09 27/03/09 03/04/09	tie INF CORR 497 25.1.2011/MRH/1235 25.1.2011/MRH/1239 tie INF CORR 579 25.1.2011/L/1269 tie INF CORR 605 25.1.2011/MRH/1388 tie INF CORR 648 tie INF CORR 605 25.1.2011/MRH/1496 25.1.2011/MRH/1502 tie INF CORR 765 25.1.2011/MRH/1706 25.1.2011/L/1794 tie INF CORR 907 25.1.2011/MRH/1935 INF CORR 1127 tie INF CORR 1145	Y	Y	M	1	3		0	10,448	0	0	10,448	incl	4,169	14,617	0	14,617	0	14,617	VPS		5C
269		20	Instructions arising from Trackform Development Workshop	18/12/2008	07/01/09 07/01/09 29/01/09 06/02/09 11/02/09 13/02/09 18/02/09 27/02/09	tie INF CORR 548 25.1.2011/BOC/1245 25.1.2011/BOC/1249 SDS-ULE90130-SW-LET-01360 25.1.2011/BOC/1510 25.1.2011/BOC/1561 tie INF CORR 756 25.1.2011/JH/1647 25.1.2011/JH/1756	Y		L	1	1,2,3		316,063	0	0	0	316,063	31,606	35,399	383,068	371,058	12,010	0	0	N/A		All
270			RBS Tramstop - Provide an Estimate for diversion of LV Power and Water supplies crossing the tram track	17/12/2008	07/01/09 09/01/09 06/03/09 12/02/09 12/03/09 17/03/09	tie INF CORR 544 25.1.2011/L/1248 25.1.2011/L/1263 tie INF CORR 854 25.1.2011/L/1591 tie INF CORR 1005 25.1.2011/MRH/1968	Y	Y	M	1	3		0	4,506	0	0	4,506	incl	1,658	6,165	0	6,165	0	6,165	VPS		5C
271		19	Road Construction Details - Construction Methodology Statements for Establishing Ground Conditions Required depth of reconstruction	18/12/2008	07/01/09 07/01/09 29/01/09 06/02/09 10/02/09 10/02/09 13/02/09 18/02/09 27/02/09 19/03/09 31/03/09	tie INF CORR 547 25.1.2011/BOC/1246 25.1.2011/BOC/1250 SDS-ULE90130-SW-LET-01359 25.1.2011/BOC/1508 SDS-ULE90130-01-LET-01386 25.1.2011/BOC/1548 tie INF CORR 755 25.1.2011/JH/1648 25.1.2011/JH/1757 SDS-ULE90130-SW-LET-01469 25.1.2011/CHBB/2139	Y		M	1	1,2,3		317,326	0	0	0	317,326	31,733	35,540	384,599	372,540	12,059	0	0	N/A		All
272		11	Create a starter layer below subsoil level at Carricknowe	18/12/2009	08/01/09 26/01/09 09/02/09 06/03/09 18/03/09 03/04/09 09/04/09	tie INF CORR 545 25.1.2011/L/1254 tie INF CORR 596 25.1.2011/MRH/1528 tie INF CORR 927 25.1.2011/MRH/1997 tie INF CORR 1138 25.1.2011/MRH/2240	Y	Y		1	4		0	77,308	0	0	77,308	incl	5,721	83,029	83,029	0	0	N/A		5B	
273		35	Gogarburn Retaining Wall W14 - Re-design to accommodate Water Mains and Gas Main	12/01/2009	15/01/09 26/01/09 12/02/09 19/02/09 25/02/09 11/03/09 17/03/09 27/03/09 01/04/09 02/04/09 07/04/09 08/04/09	tie INF CORR 558 25.1.2011/JH/1290 25.1.2011/L/1367 tie INF CORR 731 25.1.2011/MRH/1671 SDS-ULE90130-07-LET-00888 tie INF CORR 948 25.1.2011/MRH/1967 INF CORR 1126 25.1.2011/BOC/2149 SDS-ULE90130-SW-LET-01492 25.1.2011/MRH/2193 25.1.2011/JH/2213	Y	Y	M	1	3		29,065	0	0	0	29,065	2,307	1,707	27,078	0	27,078	0	27,078	N/A		7

CEC00971600\_0164









ETN INFRACO NOTIFICATION of tie CHANGE (INTC)  
CONFIDENTIAL

Withdrawn/Superseded  
Delay Only  
Agreed/Change Order issued

Ref	Tie	tie Change Order TCO	Description	Date Notified	Date of further letters	Letter Ref	Agreed in Principle?	Compensation Event	Type	Change Type	Pricing Method	Priority	Value Estimate (€000)							Allocation of Cost		Section						
													€ Submitted (Euros if CAF)							Psum or VE	Number							
													See Notes	See Notes	See Notes	See Notes	See Notes	See Notes	See Notes				€ Submitted	Sub-total	OH & P	Prelims	Total	€ Agreed
293			Gogar Castle Road tree felling	09/02/2009	17/02/09 24/03/09 31/03/09	25.1.201/GC/1520 25.1.201/GC/1543 tie INF CORR 1070 25.1.201/GC/2143	TBA			1	3,4		0	990	0	0	990	99	364	1,453	1,162	291	N/A		7A			
294			Reinstate access ramp at Gogar Depot	09/02/2009	06/03/09 11/03/09 18/03/09 30/03/09 09/04/09	25.1.201/GC/1521 tie INF CORR 851 25.1.201/D/1787 25.1.201/MRH/1996 INF CORR 1111 25.1.201/GC/2229	Y			1	4		8,250	0	0	8,250	incl	2,722	10,972	8,507	2,465	N/A		7A				
295			Carry out works to protect existing SGN gas main at Culvert 2	09/02/2009	09/02/09 11/03/09 17/03/09 23/03/09	25.1.201/GC/1522 25.1.201/MRH/1526 tie INF CORR 1001 25.1.201/MRH/1968 25.1.201/L/1901	TBA	Y		1	3,4		0	12,390	0	0	12,390	incl	3,961	16,351	0	16,351	VPS		7A			
296			Formation Level of Gogarburn Bridge West Abutment	11/02/2009	12/02/09 05/03/09 12/03/09 24/03/09	25.1.201/GC/1555 25.1.201/MRH/1595 25.1.201/D/1746 tie INF CORR 1003 tie INF CORR 1067	TBA	Y		1	3,4		0	14,092	0	0	14,092	incl	4,650	18,743	11,567	7,186	N/A		7A			
297			Formation Level of Gogarburn Bridge East Abutment	11/02/2009	12/02/09 05/03/09 12/03/09 17/03/09	25.1.201/GC/1556 25.1.201/MRH/1586 25.1.201/TG/1563 tie INF CORR 1002 25.1.201/MRH/1968	TBA	Y		1	3,4		0	8,266	0	0	8,266	incl	2,728	10,994	0	10,994	N/A		7A			
298			Revised access arrangements to Depot	03/02/09	06/01/09 20/01/09 16/02/09 25/02/09 27/02/09 27/02/09	25.1.201/CHBB/1241 tie INF CORR 604 tie INF CORR 669 25.1.201/CHBB/1603 25.1.201/CHBB/1732 tie INF CORR 793 tie INF CORR 801	TBA			1	3,4		0	0	0	0	0	0	0	0	0	0	0	N/A		7A		
299			IFC Drawing changes - Edinburgh Park Bridge (Piers, bearing)	18/02/2009	06/03/09 16/03/09 07/04/09	25.1.201/O/1654 tie INF CORR 902 25.1.201/MRH/1925 tie INF CORR 1084	TBA		M	1	1,2,3		0	0	0	0	0	0	0	0	0	0	0	0	N/A		5B	
300			Network Rail's requirement for CAT 3 checking	10/02/2009	10/02/09 26/03/09 26/03/09 08/04/09	25.1.201/GC/1536 25.1.201/GC/1535 tie INF CORR 892 INF CORR 893 25.1.201/JR/2202	TBA			1	3,4		0	0	0	0	0	0	0	0	0	0	0	N/A		All		
301			Develop and seek approval for enabling works for diversionary route from Princes Street to George Street/Queen Street	26/01/2009	11/02/09 26/02/09 11/03/09 12/03/09 18/03/09	tie INF CORR 603 25.1.201/MRH/1549 25.1.201/L/1656 tie INF CORR 690 tie INF CORR 766 25.1.201/L/1998	Y		L	1	3		0	12,863	0	0	12,863	1,286	2,045	16,194	0	16,194	N/A		1D			
302			Protection of live utilities at Russell Road Bridge during construction	03/02/2009	11/02/09 12/02/09 12/03/09 19/03/09 03/04/09	tie INF CORR 668 25.1.201/L/1552 25.1.201/MRH/1587 tie INF CORR 993 25.1.201/L/2012 tie INF CORR 1139	N	Y	M	1	3,4		0	0	0	0	0	0	0	0	0	0	0	0	N/A		2A	
304			Provisional Sum for Extra Over for Shell Grip at Junctions	12/02/2009	23/02/09	25.1.201/L/1590 25.1.201/MRH/1719	TBA	Y	M	1	3		0	0	0	0	0	0	0	0	0	0	0	0	DPS		2A	
305			Crawley Tunnel - insufficient ground cover	12/02/2009	12/02/09 16/02/09 12/03/09 17/03/09	25.1.201/BOC/1597 25.1.201/SR/1539 25.1.201/MRH/1604 tie INF CORR 1004 25.1.201/MRH/1968	TBA	Y	M	1	1,2,3		0	0	0	0	0	0	0	0	0	0	0	0	0	N/A		1C
306			Discovery of underground structure on Leith Walk	16/02/2009	04/02/09 12/03/09 13/03/09 30/03/09 08/04/09	25.1.201/MRH/1968 tie INF CORR 672 25.1.201/GC/1602 tie INF CORR 986 25.1.201/SR/1980 25.1.201/JH/2132 25.1.201/JH/2218	Y			1	3,4		0	0	0	0	0	0	0	0	0	0	0	0	N/A		1C	
307			Contaminated Soil assessment at Haymarket Depot	16/02/2009	12/02/09	25.1.201/GC/1601	TBA			1	3,4		0	0	0	0	0	0	0	0	0	0	0	0	N/A		2A	
308			Additional excavation at Carrick Knowe South Abutment	23/02/2009	23/02/09	25.1.201/GC/1693	TBA			1	3,4		0	0	0	0	0	0	0	0	0	0	0	0	N/A		5B	
309			Edinburgh Park Bridge (S27) - South Abutment Base Formals	23/02/2009	13/03/09 19/03/09 02/04/09	25.1.201/GC/1696 tie INF CORR 1028 25.1.201/GA/2008 tie INF CORR 1160	Y (Part)		M	1	3,4		0	38,064	0	0	38,064	incl	15,049	53,127	3,015	50,111	N/A		5B			
310	38		Gogar Landfill Scottish Water Utility Diversion	12/02/2009	18/02/09	25.1.201/L/1655	Y		M	1	3,4		0	0	0	0	0	0	0	0	0	0	0	0	N/A		7A	
311			IFC Drawing Changes - Section 1A - Drainage	12/03/2009		25.1.201/O/1907	TBA		M	1	1,2,3		0	0	0	0	0	0	0	0	0	0	0	0	N/A		1A	
312			IFC Drawing Changes - Leith Walk	25/02/2009		25.1.201/O/1797	TBA		M	1	1,2,3		0	0	0	0	0	0	0	0	0	0	0	0	N/A		1B	
315			IFC Drawing Changes - Drainage - Gogarburn to Airport	24/02/2009		25.1.201/O/1720	TBA		M	1	1,2,3		0	0	0	0	0	0	0	0	0	0	0	0	N/A		7A	
316			Princes Street IFC Drawing Changes	20/02/2009		25.1.201/O/1689	TBA	Y		1	1,2,3		0	0	0	0	0	0	0	0	0	0	0	0	N/A		1D	
319			Shandwick Place TPO Signage	19/02/2009	13/01/09	25.1.201/JH/1677 tie INF CORR 577 25.1.201/JH/1679 25.1.201/JH/1681 SDS-ULE90130-SW-LET-01395 tie INF CORR 804 25.1.201/BOC/1903 ULE90130-01-LET-00872	TBA			1	1		7,143	0	0	7,143	714	529	8,386	0	8,386							
320			Proposed CEC changes to demarcation requirements	19/02/2009	26/02/09 03/03/09 12/03/09 23/03/09	25.1.201/GC/1703 25.1.201/GC/1707 tie INF CORR 804 25.1.201/BOC/1903 ULE90130-01-LET-00872	TBA			1	1,2,3,4		0	0	0	0	0	0	0	0	0	0	0	0	0	N/A		All
321	39		Revised alignment to Picardy Place, York Place and London Road Junctions	20/02/2009	13/02/2009 18/03/09	tie INF CORR 757 25.1.201/L/1691 INF CORR 1059	Y		M	1	3,4		0	0	0	0	0	0	0	0	0	0	0	0	DPS	5	1C	
322			Carrick Knowe Underbridge Obstruction	23/02/2009		25.1.201/GC/1703	TBA			1	3,4		0	0	0	0	0	0	0	0	0	0	0	0	N/A		5B	
323			AB Underpass Phase 1 Pile Toe Levels	23/02/2009	23/03/09	25.1.201/GC/1944	TBA			1	3,4		0	27,477	0	0	27,477	incl	10,854	38,331	0	38,331	N/A		5C			
324			AB Underpass Phase 1 Piling Obstructions	23/02/2009	18/03/09 08/04/09	25.1.201/GC/1710 tie INF CORR 1051 25.1.201/GC/2221	TBA			1	3,4		0	0	0	0	0	0	0	0	0	0	0	0	N/A		5C	

CEC00971600\_0166





ETN INFRACO NOTIFICATION of tie CHANGE (INTC)  
CONFIDENTIAL

Withdrawn/Superseded  
Delay Only  
Agreed/Change Order issued

Ref	Tie	tie Change Order TCO	Description	Date Notified	Date of further letters	Letter Ref	Agreed in Principle?	Compensation Event	Type	Change Type	Pricing Method	Priority	Value Estimate (€000)							Allocation of Cost		Section				
													€ Submitted (Euros if CAF)	Sub-total	OH & P	Prelims	Total	€ Agreed	€ Not Agreed	Psum or VE	Number					
325			Advertisement Consents	24/02/2009	27/02/09 05/03/09 02/04/09 06/04/09	25.1.201/JH/1715 tie INF CORR 797 25.1.201/B/C/1800 tie INF CORR 1170 25.1.201/JH/2223	N			1	1		228,943	0	0	0	228,943	22,894	16,942	268,779	0	268,779	N/A		All	
326			Expose existing gully connections at Chainage 272-326 RHS	24/02/2009		25.1.201/GC/1713	TBA			1	4		0	0	0	0	0	0	0	0	0	0	0	VPS		1B
327			Dye test and camera survey at Chainage 170 RHS	24/02/2009	04/03/09 27/03/09 06/04/09	25.1.201/DMcP/01/1763 INF CORR 1128 25.1.201/GC/2228	TBA			1	3,4		0	545	0	0	545	55	415	1,015	619	396	VPS		1B	
328			Reinstate slabbed footway following MUDFA works	24/02/2009	04/03/09 06/03/09 16/03/09 27/03/09 06/04/09	25.1.201/GC/1716 25.1.201/SK/P/01/1754 tie INF CORR 877 25.1.201/MRH/1941 INF CORR 1128 25.1.201/GC/2228	Y			1	3,4		0	1,099	0	0	1,099	110	886	2,045	1,207	838	VPS		1B	
329			Break out foamed concrete backfill	24/02/2009		25.1.201/GC/1717	TBA			1	3,4		0	0	0	0	0	0	0	0	0	0	0	VPS		1B
330			Install additional gully Chainage 250 RHS	24/02/2009	06/03/09	25.1.201/GC/1718 tie INF CORR 875	Y			1	3,4		0	0	0	0	0	0	0	0	0	0	0	VPS		1B
331			Partial Handover of Depot Site	11/03/2009	02/04/09	25.1.201/GC/1873 tie INF CORR 1142	TBA			1	3,4		0	0	0	0	0	0	0	0	0	0	0	N/A		6
333			Investigate stability of and reinstate existing batters north of Gogar Depot	25/02/2009	25/02/09	25.1.201/JH/1739 25.1.201/JH/1735	TBA			1	1,2,3,4		0	0	0	0	0	0	0	0	0	0	0	N/A		6
334			Access at New Inglislor	26/02/2009		25.1.201/GC/1747	TBA			1	3,4		0	0	0	0	0	0	0	0	0	0	0	N/A		7A
335			IFC Drawing Changes - Track Drainage Section 5C				TBA			1	1,2,3		0	0	0	0	0	0	0	0	0	0	0	N/A		5C
336			IFC Drawing Changes - Track Drainage Section 7A				TBA			1	1,2,3		0	0	0	0	0	0	0	0	0	0	0	N/A		7A
337			Testing to carriageway at Leth Walk	03/03/2009	12/03/09 19/03/09	25.1.201/GC/1773 tie INF CORR 985 25.1.201/GC/2025	Y			1	1,2,3,4		0	0	0	0	0	0	0	0	0	0	0	N/A		1B
338			Remove ornamental iron balls from Groathill Depot	03/02/2009	12/03/09	25.1.201/GC/1774 tie INF CORR 984	Y			1	1,2,3,4		0	0	0	0	0	0	0	0	0	0	0	N/A		1B
339			Remove spoil from Groathill Depot	03/02/2009	19/03/09	25.1.201/GC/1775 tie INF CORR 1039	TBA			1	1,2,3,4		0	0	0	0	0	0	0	0	0	0	0	N/A		1B
340			Edinburgh Park Bridge South Abutment Base - Existing service (cable)	03/02/2009	10/03/09 18/03/09 30/03/09	25.1.201/GC/1776 tie INF CORR 952 25.1.201/MRH/1976 25.1.201/GA/2086	TBA			1	1,2,3,4		0	452	0	0	452	45	180	677	0	677	N/A		5B	
341			Princes Street - Reinforced Concrete slab above Track Box	02/03/2009	06/03/09	25.1.201/MRH/1771 tie INF CORR 672	TBA			1	1,2,3		0	0	0	0	0	0	0	0	0	0	0	N/A		1C
342	40		Transfer of private utility diversions from MUDFA at Edinburgh Park	27/02/2009	05/03/09 11/03/09 19/03/09 26/03/09 26/03/09	tie INF CORR 798 25.1.201/L/1817 tie INF CORR 953 25.1.201/L/2013 25.1.201/L/2102 25.1.201/L/2103	Y			1	3,4		0	0	0	0	0	0	0	0	0	0	0	VPS		5A,5B
343			Street Lighting - Height of poles	16/03/09	23/02/2009	SDS-ULE90180-06-LET-00129 25.1.201/JH/1942	TBA			1	1,2,3		2,125	0	0	0	2,125	213	157	2,495	0	2,495	N/A		6A	
344			Disposal of surplus excavated material at Depot	17/03/2009	03/04/09	25.1.201/GC/1922 25.1.201/GC/2170	Y			1	4		0	0	0	0	0	0	0	0	0	0	0	N/A		6
345			MUDFA use of Hippo Wheel Wash	11/03/2009	03/04/09	25.1.201/GC/1874 tie INF CORR 1080	N			1	4		0	0	0	0	0	0	0	0	0	0	0	N/A		5
346			Edinburgh Park Bridge Structural Fill	11/03/2009	19/03/09 08/04/09	25.1.201/GC/1864 tie INF CORR 1064 25.1.201/GC/2222	N			1	4		0	0	0	0	0	0	0	0	0	0	0	N/A		5B
347			Traffic Flow and re-modelling at Lothian Road Junction	11/03/2009	02/04/09	25.1.201/GC/1865 tie INF CORR 1171	N			1	3,4		0	0	0	0	0	0	0	0	0	0	0	N/A		1D
348			Additional Signs on Queen Street	11/03/2009	02/04/09	25.1.201/GC/1866 tie INF CORR 1172	N			1	3,4		0	0	0	0	0	0	0	0	0	0	0	N/A		1D
349			Traffic Management contingency for Emergency Utility Works	11/03/2009	02/04/09	25.1.201/GC/1867 tie INF CORR 1173	Y			1	4		0	0	0	0	0	0	0	0	0	0	0	N/A		1C,1D
350			Protected Species mitigation measures	11/03/2009	31/03/09 03/04/09 08/04/09	25.1.201/GC/1875 25.1.201/D/1879 tie INF CORR 1132 25.1.201/GC/2216	N			1	4		0	6,889	0	0	6,889	666	2,271	9,820	0	9,820	N/A		7	
351			Reversal of One Way System on Rose Street	11/03/2009		25.1.201/GC/1868	TBA			1	4		0	0	0	0	0	0	0	0	0	0	0	N/A		1C,1D
352			Off-peak Taxi Rank at George Street	12/03/2009		25.1.201/GC/1908	TBA			1	4		0	0	0	0	0	0	0	0	0	0	0	N/A		1C,1D
353			Additional Measures at George Street	11/03/2009		25.1.201/GC/1869	TBA			1	4		0	0	0	0	0	0	0	0	0	0	0	N/A		1C,1D
354			Provide Corex signs and double yellow lines on George Street	11/03/2009		25.1.201/GC/1870	TBA			1	4		0	0	0	0	0	0	0	0	0	0	0	N/A		1C,1D
355			Additional Signage at George Street/St Andrews Square	11/03/2009	02/04/09	25.1.201/GC/1871 tie INF CORR 1176	N			1	4		0	0	0	0	0	0	0	0	0	0	0	N/A		1C,1D
356			Replace MASS barriers at George Street, Hanover Street and Frederick Street	11/03/2009	02/04/09	25.1.201/GC/1872 tie INF CORR 1177	N			1	4		0	0	0	0	0	0	0	0	0	0	0	N/A		1C,1D
357			Trial Holes in Princes Street	11/03/2009		25.1.201/GC/1876	TBA			1	4		0	0	0	0	0	0	0	0	0	0	0	N/A		1C,1D
358			Incomplete MUDFA Works at the Princes Street/Mound Junction	17/03/2009		25.1.201/L/1955	TBA			1	3,4		0	0	0	0	0	0	0	0	0	0	0	N/A		1C
359			Haymarket Junction- Underground Chamber at Clifton Terrace	17/03/2009	11/03/2009	tie INF CORR 1958 25.1.201/L/1958	TBA			1	3,4		0	0	0	0	0	0	0	0	0	0	0	N/A		1D
360	37		Interior layout of Trams	05/02/2009		tie INF CORR 658	Y			1	3,4		0	0	0	0	0	0	0	0	0	0	0	N/A		All
361	41		Scottish Power Utility Diversion near Murrayfield Station	24/03/2009	(received date)	tie INF CORR 1052	Y			1	3,4		0	0	0	0	0	0	0	0	0	0	0	VPS		5A
362			Edinburgh Park Bridge - North and South Approach Ramps additional earthworks				TBA			1	1,2,3		0	0	0	0	0	0	0	0	0	0	0	N/A		5B
363			Traffic Management - Provide Wider Area Signage to Princes Street	27/03/2009		25.1.201/GC/2118	TBA			1	3,4		0	0	0	0	0	0	0	0	0	0	0	N/A		1C,1D
364			New Manhole (MH1) at Balbirnie Place	31/03/2009		25.1.201/GC/2142	TBA			1	3,4		0	61,467	0	0	61,467	6,147	7,991	75,604	0	75,604	N/A		2A	
365			Wider Area Fly P & R Survey and Proposals	08/04/09	25/03/09 08/04/09	SDS-ULE90180-SW-LET-01477 25.1.201/JH/2226 25.1.201/B/C/2214	TBA			1	1,2,3,4		0	0	0	0	0	0	0	0	0	0	0	N/A		All
366	42		Demolish all Structures on Plots nos 97 and 102 near Roseburn Street	27/03/2009	09/04/09	tie INF CORR 1088 25.1.201/B/C/2252	Y			1	3,4		0	0	0	0	0	0	0	0	0	0	0	N/A		5A
													2,334,165	20,102,430	6,637,813	550,000	29,624,408	673,020	3,033,453	33,310,880	7,619,618	25,696,076				

Notes  
Type Column 1  
D = Notified Departure Deemed tie Change  
M = Notified Departure Mandatory tie Change  
J = tie Instruction

Euros 1 2 3 4 5 6 7 8 9 10

CEC00971600\_0167





ETN INFRACO NOTIFICATION of the CHANGE (INTC)  
CONFIDENTIAL

Withdrawn/Superseded  
Delay Only  
Agreed/Change Order issued

Ref	Title	tie Change Order	Description	Date Notified	Date of further letters	Letter Ref	Agreed in Principle?	Compensation Event	Type	Change Type	Pricing Method	Priority	Value Estimate (€000)							Allocation of Cost		Section
													€ Submitted (Euros if CAF)	€ Agreed	€ Not Agreed	Psum or VE	Number	See Notes	See Notes	See Notes	See Notes	

- Change Type
  - 1 tie Change
  - 2 Infraco Change
  - 3 Small Works Change
  - 4 Accommodation Works Change
  - 5 Qualifying Change in Law
  - 6 Network Expansion
  - 7 Labour & Landfill Tax Fluctuations
  
- Pricing
  - 1 = Schedule of Rates
  - 2 = Derived Rates
  - 3 = Fair Rates and Prices
  - 4 = Actual Cost  
Or any combination
  
- Priority
  - 1 Work in progress January 2009
  - 2 Work complete December 2008
  - 3 Work to be started Feb - April 2009
  - 4 Work post April 2009
  
- 3 Consortium Partner and Site Section
  
- Allocation of Cost
  - DPS Defined Provisional Sum
  - YPS Undefined Provisional Sum
  - VE Value Engineering
  - FVE Further Value Engineering
  - N/A None of the above

CEC00971600\_0168





ETN INFRA CO NOTIFICATION of the CHANGE (INTC)  
CONFIDENTIAL

Ref	TNC	INTC NUMBER	tie Change Order TCO	Description	Date Notified	Date of further letters	Letter Ref	Agreed in Principle?	Compensation Event	Type	Change Type	Pricing Method	Priority	COSTS							Allocation of Cost		Section				
														Value Estimate (GBP)							£ Agreed			£ Not Agreed		Psum or VE	Number
														See Notes	See Notes	See Notes	See Notes	Sub-total	OH & P	Prelims	Total						
1				Failure of the SDS Provider to achieve the release of IFC drawings by the dated identified in Programme - <b>Section 5A - Roads, kerbs, footways, paved areas, drainage, lighting and traffic signs</b>	21/01/2009	11/02/09 19/02/09 06/03/09 11/03/09 17/03/09 27/03/09 07/04/09	25.1.201/MRH/1318 INF CORR 743 25.1.201/MRH/1673 INF CORR 994 INF CORR 950 25.1.201/MRH/1960 INF CORR 1118 25.1.201/MRH/2193																				
2				Failure of the SDS Provider to achieve the release of IFC drawings by the dated identified in Programme - <b>Section 5C - Roads, kerbs, footways, paved areas, drainage, lighting and traffic signs</b>	14/01/2009	12/02/09 19/02/09 06/03/09 11/03/09 17/03/09 27/03/09 07/04/09	25.1.201/MRH/1286 INF CORR 729 25.1.201/MRH/1675 INF CORR 895 INF CORR 946 25.1.201/MRH/1965 INF CORR 1121 25.1.201/MRH/2193																				
3				Failure of the SDS Provider to achieve the release of IFC drawings by the dated identified in Programme - <b>Section 7A Earthworks</b>	16/01/2009	11/02/09 19/02/09 11/03/09 17/03/09 27/03/09 07/04/09	25.1.201/MRH/1295 INF CORR 744 25.1.201/MRH/1672 INF CORR 951 25.1.201/MRH/1961 INF CORR 1119 25.1.201/MRH/2193																				
4				Failure of the SDS Provider to achieve the release of IFC drawings by the dated identified in Programme - <b>Section 1A Lindsay Road Retaining Wall</b>	23/01/2009	12/02/09 19/02/09 11/03/09 17/03/09 27/03/09 07/04/09	25.1.201/MRH/1348 INF CORR 730 25.1.201/MRH/1674 INF CORR 947 25.1.201/MRH/1964 INF CORR 1120 25.1.201/MRH/2193																				
5				Failure of the SDS Provider to achieve the release of IFC drawings by the dated identified in Programme - <b>Section 1B Drainage, Roads, Traffic Signs &amp; Pavement Surface</b>	18/12/2008	20/01/09 26/01/09 18/02/09 23/02/09 27/03/09	25.1.201/MRH/1200 INF CORR 614 25.1.201/MRH/1385 INF CORR 762 25.1.201/MRH/1709 INF CORR 1034																				
6				Failure of the SDS Provider to achieve the release of IFC drawings by the dated identified in Programme - <b>Section 2A: Haymarket Station Viaduct &amp; Access to Verity House</b>	12/01/2009	12/02/09 19/02/09 11/03/09 17/03/09	25.1.201/MRH/1270 INF CORR 728 25.1.201/MRH/1676 INF CORR 945 25.1.201/MRH/1959																				
7		244		Building fixing Owner Agreements- Information Required to Support Court Proceedings	28/11/2008	12/02/09	25.1.201/MRH/1038 INF CORR 719																				
8				Failure of the SDS Provider to achieve the release of IFC drawings by the dated identified in the Programme - <b>Balfour Street Tramstop</b>	11/12/2008	12/02/09 19/02/09	25.1.201/MRH/1131 INF CORR 717 25.1.201/MRH/1678																				
9				Failure of the SDS Provider to achieve the release of IFC drawings by the dated identified in the Programme - <b>All other Drawings - Section 1C (is CE77)</b>	05/12/2008	20/01/09 26/01/09 18/02/09 23/02/09 06/03/09 16/03/09	25.1.201/MRH/1096 INF CORR 602 25.1.201/MRH/1386 INF CORR 763 25.1.201/MRH/1708 INF CORR 809 25.1.201/MRH/1305																				
10				RFI 156 - Section 1B Roadworks - Ch210 LHS - Shallow Ducts	22/01/2009	10/02/09 16/02/09 27/03/09 09/04/09	25.1.201/MRH/1323 INF CORR 678 25.1.201/MRH/1605 INF CORR 1095 25.1.201/MRH/2242																				
11				RFI 162 - Section 1B Roadworks - Ch510-530 - BT & C&W Chambers fouling new kerb line	22/01/2009	10/02/09 16/02/09 27/03/09 09/04/09	25.1.201/MRH/1324 INF CORR 679 25.1.201/MRH/1606 INF CORR 1097 25.1.201/MRH/2247																				
12				RFI 165 - Section 1B Roadworks - Ch550 RHS - Shallow water valve	22/01/2009	10/02/09 16/02/09 27/03/09 09/04/09	25.1.201/MRH/1325 INF CORR 680 25.1.201/MRH/1607 INF CORR 1098 25.1.201/MRH/2246																				
13				RFI 166 - Section 1B Roadworks - Ch474 RHS - shallow electricity draw pit	22/01/2009	10/02/09 16/02/09 27/03/09 09/04/09	25.1.201/MRH/1326 INF CORR 681 25.1.201/MRH/1608 INF CORR 1099 25.1.201/MRH/2245																				
14				RFI 167 - Section 1B Roadworks - Ch490 LHS - BT Chamber fouling new kerb line	22/01/2009	10/02/09 16/02/09 27/03/09 07/04/09	25.1.201/MRH/1327 INF CORR 682 25.1.201/MRH/1609 INF CORR 1100 25.1.201/MRH/2189																				
15				RFI 168 - Section 1B Roadworks - Ch495 RHS - gas valve fouling new kerb line	22/01/2009	10/02/09 17/02/09	25.1.201/MRH/1328 INF CORR 683 25.1.201/MRH/1638																				
16				RFI 169 - Section 1B Roadworks - Ch110 - C&W Chamber fouling new kerb line	22/01/2009	10/02/09 16/02/09 27/03/09 09/04/09	25.1.201/MRH/1329 INF CORR 684 25.1.201/MRH/1610 INF CORR 1101 25.1.201/MRH/2244																				
17					22/01/2009	10/02/09 16/02/09 27/03/09 09/04/09	25.1.201/MRH/1330 INF CORR 685 25.1.201/MRH/1611 INF CORR 1102 25.1.201/MRH/2243																				
18				RFI 171 - Section 1B Roadworks - Ch405 RHS - Shallow fire hydrant	22/01/2009	10/02/09 16/02/09 27/03/09 07/04/09	25.1.201/MRH/1331 INF CORR 686 25.1.201/MRH/1612 INF CORR 1103 25.1.201/MRH/2190																				
19				RFI 172 - Section 1B Roadworks - Ch446 - Shallow fire hydrant	22/01/2009	10/02/09 16/02/09 27/03/09 07/04/09	25.1.201/MRH/1332 INF CORR 687 25.1.201/MRH/1613 INF CORR 1104 25.1.201/MRH/2191																				

CEC00971600\_0169





ETN INFRACO NOTIFICATION of the CHANGE (INTC)  
CONFIDENTIAL

Ref	TNC	INTC NUMBER	Change Order TCO	Description	Date Notified	Date of further letters	Letter Ref	Agreed in Principle?	Compensation Event	Type	Change Type	Pricing Method	Priority	COSTS										Section		
														Value Estimate (GBP)											Allocation of Cost	
														See Notes	See Notes	See Notes	See Notes	Sub-total	OH & P	Prelims	Total	£ Agreed	£ Not Agreed		Psum or VE	Number
20				RFI 173 - Section 1B Roadworks - Ch506 - Shallow fire hydrant	22/01/2009	10/02/09 16/02/09 27/03/09 07/04/09	25.1.201/MRH/1393 INF CORR 688 25.1.201/MRH/1614 INF CORR 1105 25.1.201/MRH/2192																			
21				RFI 174 - Section 1B Roadworks - Ch592 - Drawpit clashing with new kerb line	22/01/2009	10/02/09 16/02/09 27/03/09 09/04/09	25.1.201/MRH/1394 INF CORR 689 25.1.201/MRH/1615 INF CORR 1106 25.1.201/MRH/2241																			
22				RFI 177 - Section 1B Roadworks - Removal of BT phone boxes, post boxes and CCTV	22/01/2009	10/02/09 16/02/09	25.1.201/MRH/1395 INF CORR 690 25.1.201/MRH/1616																			
23				RFI 178 - Section 1B Roadworks - Removal of BT phone boxes, post boxes and CCTV	22/01/2009	10/02/09 16/02/09	25.1.201/MRH/1396 INF CORR 690 25.1.201/MRH/1617																			
24				RFI 179 - Section 1C Roadworks - Removal of BT phone boxes, CCTV and traffic signals	22/01/2009	10/02/09 16/02/09	25.1.201/MRH/1397 INF CORR 690 25.1.201/MRH/1618																			
25				RFI 180 - Section 1B Roadworks - Ch625 RHS - BT chamber fouling new kerb line and shallow ducts	22/01/2009	10/02/09 16/02/09	25.1.201/MRH/1398 INF CORR 691 25.1.201/MRH/1619																			
26				RFI 181 - Section 1B Roadworks - Ch882 - BT chamber fouling new kerb line and shallow ducts	22/01/2009	10/02/09 16/02/09	25.1.201/MRH/1399 INF CORR 692 25.1.201/MRH/1622																			
27				RFI 182 - Section 1B Roadworks - Ch710 RHS - Valve fouling new kerb line	22/01/2009	10/02/09 16/02/09	25.1.201/MRH/1340 INF CORR 693 25.1.201/MRH/1621																			
28				RFI 183 - Section 1B Roadworks - Ch900 LHS - Valve fouling new kerb line	22/01/2009	10/02/09 16/02/09	25.1.201/MRH/1341 INF CORR 694 25.1.201/MRH/1623																			
29				RFI 184 - Section 1B Roadworks - Ch890 - Valve clashing with new kerb line	22/01/2009	10/02/09 16/02/09	25.1.201/MRH/1342 INF CORR 695 25.1.201/MRH/1624																			
30				RFI 185 - Section 1B Roadworks - Ch210 LHS - Valve in new carriageway	22/01/2009	10/02/09 16/02/09	25.1.201/MRH/1343 INF CORR 696 25.1.201/MRH/1625																			
31				RFI 186 - Section 1B Roadworks - Ch530 RHS - Drawpit clashing with new kerb line	22/01/2009	10/02/09 16/02/09	25.1.201/MRH/1344 INF CORR 697 25.1.201/MRH/1626																			
32		14		Water main and sewer diversions at the airport	05/01/2009	20/01/09 26/01/09 04/02/09 06/02/09	25.1.201/MRH/1230 INF CORR 597 25.1.201/MRH/1394 INF CORR 662 25.1.201/MRH/1506																			
33		15		Water main and sewer diversions at the airport	05/01/2009	20/01/09 26/01/09 04/02/09 06/02/09 06/03/09 16/03/09	25.1.201/MRH/1230 INF CORR 597 25.1.201/MRH/1395 INF CORR 663 25.1.201/MRH/1505 INF CORR 932 25.1.201/MRH/1938																			
34		16		Water main and sewer diversions at the airport	05/01/2009	20/01/09 26/01/09 04/02/09 06/02/09 06/03/09	25.1.201/MRH/1230 INF CORR 597 25.1.201/MRH/1396 INF CORR 664 25.1.201/MRH/1504 INF CORR 933																			
35	2	51		Transfer of Utility Diversions from MUDFA to INFRACO Sections 5A	28/11/2008	05/01/09 20/01/09 26/01/09	25.1.201/MRH/1040 25.1.201/IL/1232 INF CORR 606 25.1.201/MRH/1397																			
36	3	52		Transfer of Utility Diversions from MUDFA to INFRACO Sections 5B	28/11/2008	05/01/2009 20/01/2009	25.1.201/MRH/1041 25.1.201/IL/1231 INF CORR 607																			
37	4	53		Transfer of Utility Diversions from MUDFA to INFRACO Sections 5C	28/11/2008	16/12/08 20/01/09 20/01/09 26/01/09 29/01/09 06/02/09 06/03/09 16/03/09 27/03/09 07/04/09	25.1.201/MRH/1042 25.1.201/MRH/1177 INF CORR 617 INF CORR 588 25.1.201/MRH/1399 INF CORR 657 25.1.201/MRH/1498 INF CORR 929 25.1.201/MRH/1396 INF CORR 1107 25.1.201/MRH/2196																			
38		69		Gyle Stop Retaining Wall	16/12/2008	20/01/09 26/01/09	25.1.201/MRH/1179 INF CORR 616 25.1.201/MRH/1391																			
39		70		Delayed completion of MUDFA Works at Bankhead Retaining Wall	16/12/2008	20/01/09	25.1.201/MRH/1176 INF CORR 610																			
40	10	86		Transfer of Utility Diversions from MUDFA to INFRACO - Sections 1A, 1C & 1D	28/11/08	16/12/08 05/01/09 20/01/09 26/01/09 02/04/09	Crummock J0426 JS/C2.0.03 25.1.201/MRH/1039 25.1.201/MRH/1183 25.1.201/MRH/1229 INF CORR 598 25.1.201/MRH/1389 INF CORR 1163																			
41		91		Estimate of works arising from unsuitable ground conditions	12/01/2009		25.1.201/CO/1272																			
42		117		Extra demolition required at Russell Road retaining wall to Roseburn Street Units and Roseburn Garage	21/01/09	12/02/09 20/02/09	25.1.201/MRH/1317 INF CORR 734 25.1.201/MRH/1685																			
43		151		Remedial Works to Services Diversions due to non-compliant filling by MUDFA	01/12/2008	16/12/08 20/01/09 26/01/09 29/01/09 04/02/09 06/03/09 24/03/09	25.1.201/MRH/1048 25.1.201/MRH/1178 INF CORR 615 25.1.201/MRH/1398 INF CORR 658 25.1.201/MRH/1478 INF CORR 930 25.1.201/MRH/2061																			

CEC00971600\_0170



ETN INFRACO NOTIFICATION of the CHANGE (INTC)  
CONFIDENTIAL



Ref	TRC NUMBER	INTC NUMBER	the Change Order TCO	Description	Date Notified	Date of further letters	Letter Ref	Agreed in Principle?	Compensation Event	Type	Change Type	Pricing Method	Priority	Value Estimate (copy)				Section	
														£ Agreed	£ Not Agreed	£ Sum of VE	Number		
														CO215					
														Sub-total	OH & P	Prelims	Total		
														Siemens	Bilfinger				
														£ Submitted	£ Subtotal	£ Agreed	£ Not Agreed	£ Sum of VE	Number
44		173		Discovery of underground petrol tank at National Car Rental Site	21/01/2009	12/02/09 23/02/09 27/02/09 07/04/09	25.1.201/MRH/1520 INF CORR 736 25.1.201/MRH/1698 INF CORR 112 27/02/09 25.1.201/MRH/1768 INF CORR 112 07/04/09 25.1.201/MRH/1693 INF CORR 618 20/01/09 25.1.201/MRH/1393 INF CORR 735 12/02/09 25.1.201/MRH/1692 INF CORR 928 06/09/09 25.1.201/MRH/1597 INF CORR 117 27/02/09 25.1.201/MRH/1695 INF CORR 117												
45		174		BT DUCTS under kerbs CH345-365 RHS Leith Walk	01/12/2008	06/01/09 26/01/09 12/02/09 20/02/09 06/09/09 27/02/09	25.1.201/MRH/1649 INF CORR 612 26/01/09 25.1.201/MRH/1384 INF CORR 732 12/02/09 25.1.201/MRH/1662 INF CORR 919 06/09/09 25.1.201/MRH/1660 INF CORR 918 16/09/09												
46		184		Remedial Works to Services Diversions due to non-compliant drilling by WUDPA	01/12/2008	18/12/08 20/01/09 26/01/09 12/02/09 20/02/09 06/09/09	25.1.201/MRH/1650 INF CORR 612 25.1.201/MRH/1307 INF CORR 612 20/01/09 25.1.201/MRH/1371 INF CORR 612 20/01/09 25.1.201/MRH/1371 INF CORR 730 12/02/09 25.1.201/MRH/1663 INF CORR 918 16/09/09												
47		185		Dealing with utilities conflicting with relocation of road kerbs and road widening Leith Walk	01/12/2008	18/12/08 20/01/09 26/01/09 12/02/09 20/02/09 06/09/09	25.1.201/MRH/1654 INF CORR 612 25.1.201/MRH/1307 INF CORR 612 20/01/09 25.1.201/MRH/1371 INF CORR 612 20/01/09 25.1.201/MRH/1371 INF CORR 705 12/02/09 25.1.201/MRH/1645 INF CORR 923 06/09/09 25.1.201/MRH/1595 INF CORR 921 16/09/09												
48		189		Dealing with utilities conflicting with relocation of road kerbs and road widening Leith Walk	01/12/2008	18/12/08 20/01/09 26/01/09 12/02/09 20/02/09 06/09/09	25.1.201/MRH/1654 INF CORR 612 25.1.201/MRH/1307 INF CORR 612 20/01/09 25.1.201/MRH/1371 INF CORR 612 20/01/09 25.1.201/MRH/1371 INF CORR 705 12/02/09 25.1.201/MRH/1645 INF CORR 923 06/09/09 25.1.201/MRH/1595 INF CORR 921 16/09/09												
48		190		Dealing with utilities conflicting with relocation of road kerbs and road widening Leith Walk	01/12/2008	18/12/08 20/01/09 26/01/09 12/02/09 20/02/09 06/09/09	25.1.201/MRH/1654 INF CORR 612 25.1.201/MRH/1307 INF CORR 612 20/01/09 25.1.201/MRH/1371 INF CORR 612 20/01/09 25.1.201/MRH/1371 INF CORR 705 12/02/09 25.1.201/MRH/1645 INF CORR 923 06/09/09 25.1.201/MRH/1595 INF CORR 921 16/09/09												
50		191		Dealing with utilities conflicting with relocation of road kerbs and road widening Leith Walk	01/12/2008	18/12/08 20/01/09 26/01/09 12/02/09 20/02/09 06/09/09	25.1.201/MRH/1654 INF CORR 612 25.1.201/MRH/1307 INF CORR 612 20/01/09 25.1.201/MRH/1371 INF CORR 612 20/01/09 25.1.201/MRH/1371 INF CORR 705 12/02/09 25.1.201/MRH/1645 INF CORR 923 06/09/09 25.1.201/MRH/1595 INF CORR 921 16/09/09												
51		192		Dealing with utilities conflicting with relocation of road kerbs and road widening Leith Walk	01/12/2008	18/12/08 20/01/09 26/01/09 12/02/09 20/02/09 06/09/09	25.1.201/MRH/1654 INF CORR 612 25.1.201/MRH/1307 INF CORR 612 20/01/09 25.1.201/MRH/1371 INF CORR 612 20/01/09 25.1.201/MRH/1371 INF CORR 705 12/02/09 25.1.201/MRH/1645 INF CORR 923 06/09/09 25.1.201/MRH/1595 INF CORR 921 16/09/09												
52		193		Dealing with utilities conflicting with relocation of road kerbs and road widening Leith Walk	01/12/2008	18/12/08 20/01/09 26/01/09 12/02/09 20/02/09 06/09/09	25.1.201/MRH/1654 INF CORR 612 25.1.201/MRH/1307 INF CORR 612 20/01/09 25.1.201/MRH/1371 INF CORR 612 20/01/09 25.1.201/MRH/1371 INF CORR 705 12/02/09 25.1.201/MRH/1645 INF CORR 923 06/09/09 25.1.201/MRH/1595 INF CORR 921 16/09/09												
53		194		Dealing with utilities conflicting with relocation of road kerbs and road widening Leith Walk	01/12/2008	18/12/08 20/01/09 26/01/09 12/02/09 20/02/09 06/09/09	25.1.201/MRH/1654 INF CORR 612 25.1.201/MRH/1307 INF CORR 612 20/01/09 25.1.201/MRH/1371 INF CORR 612 20/01/09 25.1.201/MRH/1371 INF CORR 705 12/02/09 25.1.201/MRH/1645 INF CORR 923 06/09/09 25.1.201/MRH/1595 INF CORR 921 16/09/09												
54		195		Dealing with utilities conflicting with relocation of road kerbs and road widening Leith Walk	01/12/2008	18/12/08 20/01/09 26/01/09 12/02/09 20/02/09 06/09/09	25.1.201/MRH/1654 INF CORR 612 25.1.201/MRH/1307 INF CORR 612 20/01/09 25.1.201/MRH/1371 INF CORR 612 20/01/09 25.1.201/MRH/1371 INF CORR 705 12/02/09 25.1.201/MRH/1645 INF CORR 923 06/09/09 25.1.201/MRH/1595 INF CORR 921 16/09/09												
55		207		Scottish Gas Networks - Gas Main protection at covert no 2	21/01/2009	19/02/09 16/02/09 11/03/09 17/03/09 27/03/09 07/04/09	25.1.201/MRH/1657 INF CORR 612 25.1.201/MRH/1307 INF CORR 612 20/01/09 25.1.201/MRH/1371 INF CORR 612 20/01/09 25.1.201/MRH/1371 INF CORR 708 12/02/09 25.1.201/MRH/1664 INF CORR 917 16/09/09 25.1.201/MRH/1595 INF CORR 917 16/09/09												
56		208		Leith Walk Christmas Embargo	28/11/2008	12/09/09 17/09/09	25.1.201/MRH/1636 INF CORR 1024 17/09/09												
57		214		Princes Street Construction Works	28/11/2008	19/03/09 07/04/09	25.1.201/MRH/1637 INF CORR 1023 17/09/09 25.1.201/MRH/1636 INF CORR 1023 07/04/09												
58		216		Dealing with utilities conflicting with relocation of road kerbs and road widening Leith Walk	01/12/2008	18/12/08 20/01/09 26/01/09 12/02/09 20/02/09	25.1.201/MRH/1658 INF CORR 612 20/01/09 25.1.201/MRH/1371 INF CORR 612 20/01/09 25.1.201/MRH/1371 INF CORR 709 12/02/09 25.1.201/MRH/1655 INF CORR 612 20/02/09												
59		217		Dealing with utilities conflicting with relocation of road kerbs and road widening Leith Walk	01/12/2008	18/12/08 20/01/09 26/01/09 12/02/09 20/02/09	25.1.201/MRH/1659 INF CORR 612 20/01/09 25.1.201/MRH/1371 INF CORR 612 20/01/09 25.1.201/MRH/1371 INF CORR 710 12/02/09 25.1.201/MRH/1658 INF CORR 612 20/02/09												
60		218		Dealing with utilities conflicting with relocation of road kerbs and road widening Leith Walk	01/12/2008	18/12/08 20/01/09 26/01/09 12/02/09 20/02/09 06/09/09	25.1.201/MRH/1660 INF CORR 612 20/01/09 25.1.201/MRH/1371 INF CORR 612 20/01/09 25.1.201/MRH/1371 INF CORR 711 12/02/09 25.1.201/MRH/1666 INF CORR 912 06/09/09												

CEC00971600\_0171













ETN INFRA CO NOTIFICATION of the CHANGE (INTC)  
CONFIDENTIAL

Ref	Refs.		tie Change Order TCO	Description	Date Notified	Date of further letters	Letter Ref	Agreed in Principle?	Compensation Event	Type	Change Type	Pricing Method	Priority	COSTS										Section		
	TNC	INTC NUMBER												Value Estimate (GBP)											Allocation of Cost	
	See Notes	See Notes												See Notes	See Notes	See Notes	See Notes	See Notes	See Notes	See Notes	See Notes	See Notes	See Notes		See Notes	See Notes
Sub-total	OH & P	Prelims	Total	£ Agreed	£ Not Agreed	Psum or VE	Number	See Notes																		
116				Utilities Diversions Section 7: Chis Holmes Cabinet Makers	12/02/2009	12/03/09 17/03/09	25.1.201/IL/1591 INF CORR 1005																			
117				Failure of the SDS Provider to achieve the release of IFC Drawings by the dates identified in the Programme - <b>SW Drainage</b>	20/03/2009		25.1.201/MRH/1968																			
118				Failure of the SDS Provider to achieve the release of IFC Drawings by the dates identified in the Programme - <b>Section 2A - Roads, Junctions, Crossings, TS, TS Ducting, Kerbs, Footways, Paved, Drainage, Lighting</b>	19/03/2009		25.1.201/MRH/2011																			
119				Failure of the SDS Provider to achieve the release of IFC Drawings by the dates identified in the Programme - <b>Section 1A - Road Design - Footway Construction</b>	24/03/2009		25.1.201/MRH/2064																			
120				Failure of the SDS Provider to achieve the release of IFC Drawings by the dates identified in the Programme - <b>Section 7 - Roads, Drainage, Lighting, Kerbs etc</b>	24/03/2009		25.1.201/MRH/2066																			
121				Failure of the SDS Provider to achieve the release of IFC Drawings by the dates identified in the Programme - <b>Sections 1A, B, C, D, 2A, 5B, C, 7A - Tram stops</b>	25/03/2009		25.1.201/MRH/2068																			
122				Failure of the SDS Provider to achieve the release of IFC Drawings by the dates identified in the Programme - <b>Section 7A - Edinburgh Airport Tramstop</b>	25/03/2009		25.1.201/MRH/2071																			
123				Failure of the SDS Provider to achieve the release of IFC Drawings by the dates identified in the Programme - <b>Section 5B - Edinburgh Park Tram Stop</b>	25/03/2009		25.1.201/MRH/2084																			
124				Failure of the SDS Provider to achieve the release of IFC Drawings by the dates identified in the Programme - <b>Section 2A - Haymarket Tram Stop</b>	25/03/2009		25.1.201/MRH/2078																			
125				Failure of the SDS Provider to achieve the release of IFC Drawings by the dates identified in the Programme - <b>Section 2 - Drainage</b>	27/03/2009		25.1.201/MRH/2111																			
126				Failure of SDS Provider to achieve the release of IFC Drawings by the dated identified in the Programme - <b>Section 7A - Roads, kerbs, footways and paved area</b>	27/03/2009		25.1.201/MRH/2112																			
127				Failure of SDS Provider to achieve the release of IFC Drawings by the dated identified in the Programme - <b>Section 5B - Soft Landscaping</b>	07/04/2009		25.1.201/MRH/2197																			
128				Failure of SDS Provider to achieve the release of IFC Drawings by the dated identified in the Programme - <b>Section 5A - Roads, Traffic Signs and Markings, Ducting, Kerbs, Footways and paved areas, Lighting and Drainage</b>	08/04/2009		25.1.201/MRH/2225																			
129				Failure of SDS Provider to achieve the release of IFC Drawings by the dated identified in the Programme - <b>Section 5B - Roads, Traffic Signs and Road Markings, Traffic Signal Ducting, Kerbs, Footways, Paved Areas, Drainage and Lighting</b>	09/04/2009		25.1.201/MRH/2238																			
														0	0	0	0	0	0	0	0					

CEC00971600\_0174



## **10.8 Organisation Charts**







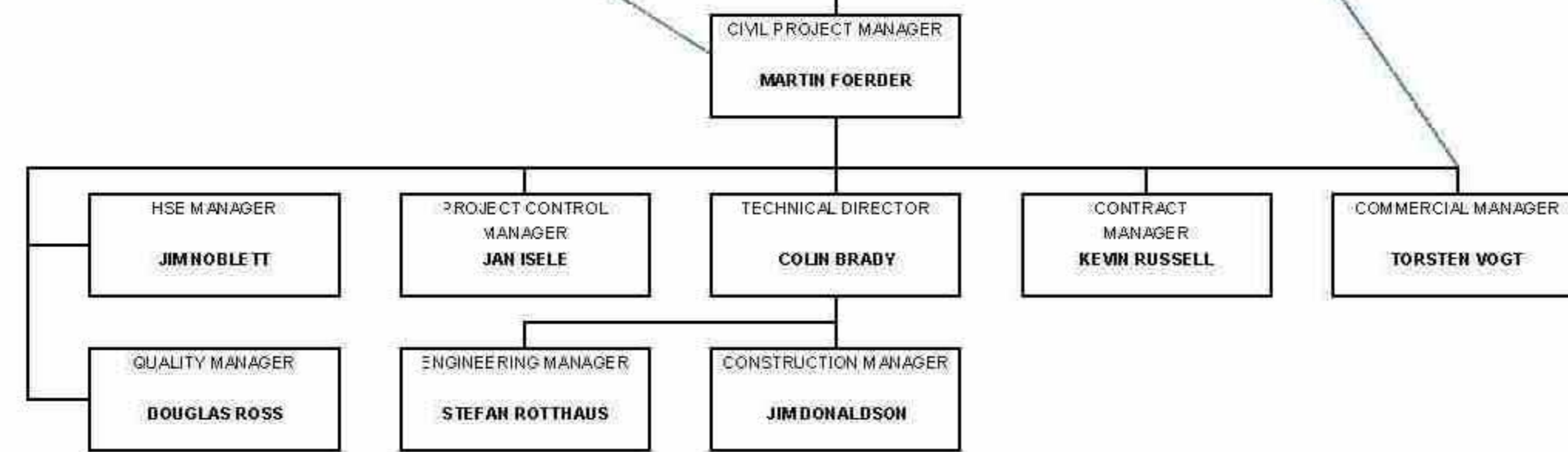
BB HEAD OFFICE SUPPORT  
FINANCIAL/INSURANCE  
PERSONNEL  
QM  
LEGAL

Bilfinger Berger UK  
Managing Director: **Richard Walker**  
Commercial Director: **M. ZILIGENS**

**CONSORTIUM BOARD**  
BILFINGER BERGER  
RICHARD WALKER, DIRK VMPFERMANN, MICHAEL ZILIGENS, RALF AXMANN  
SIEMENS  
JOSEF FRENTZ, MICHAEL FLYNN, DAVID MOTTRAM, EWALD GRVBEK  
CONSTRUCCIONES Y AUXILIAR DE FERROCARRILES S.A.  
ANTONIO CAMPOS

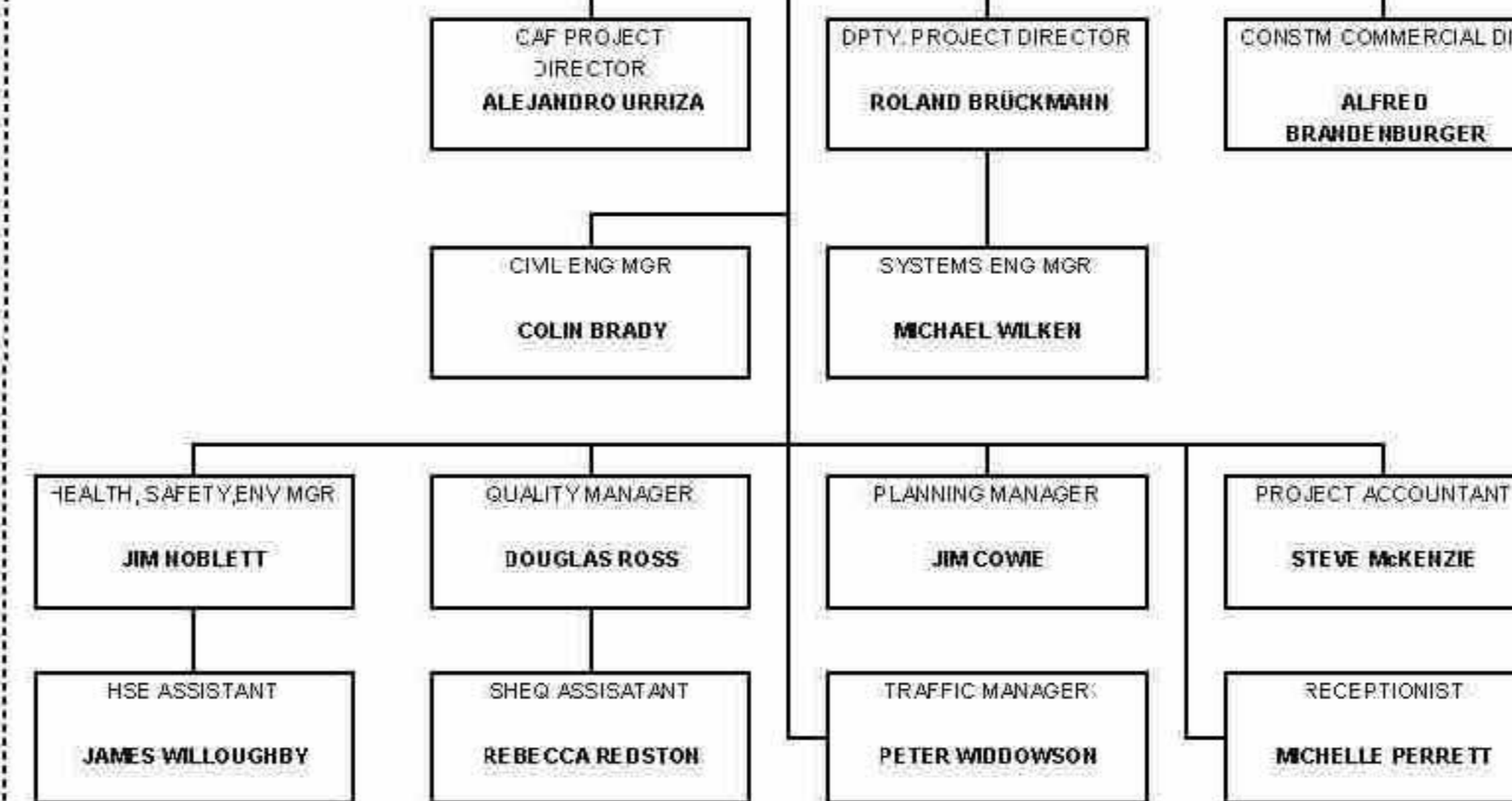
SIEMENS  
HEAD OFFICE SUPPORT  
FINANCIAL/INSURANCE  
PERSONNEL  
QM  
LEGAL

**BILFINGER BERGER CIVIL/BUILDING WORKS TEAM**

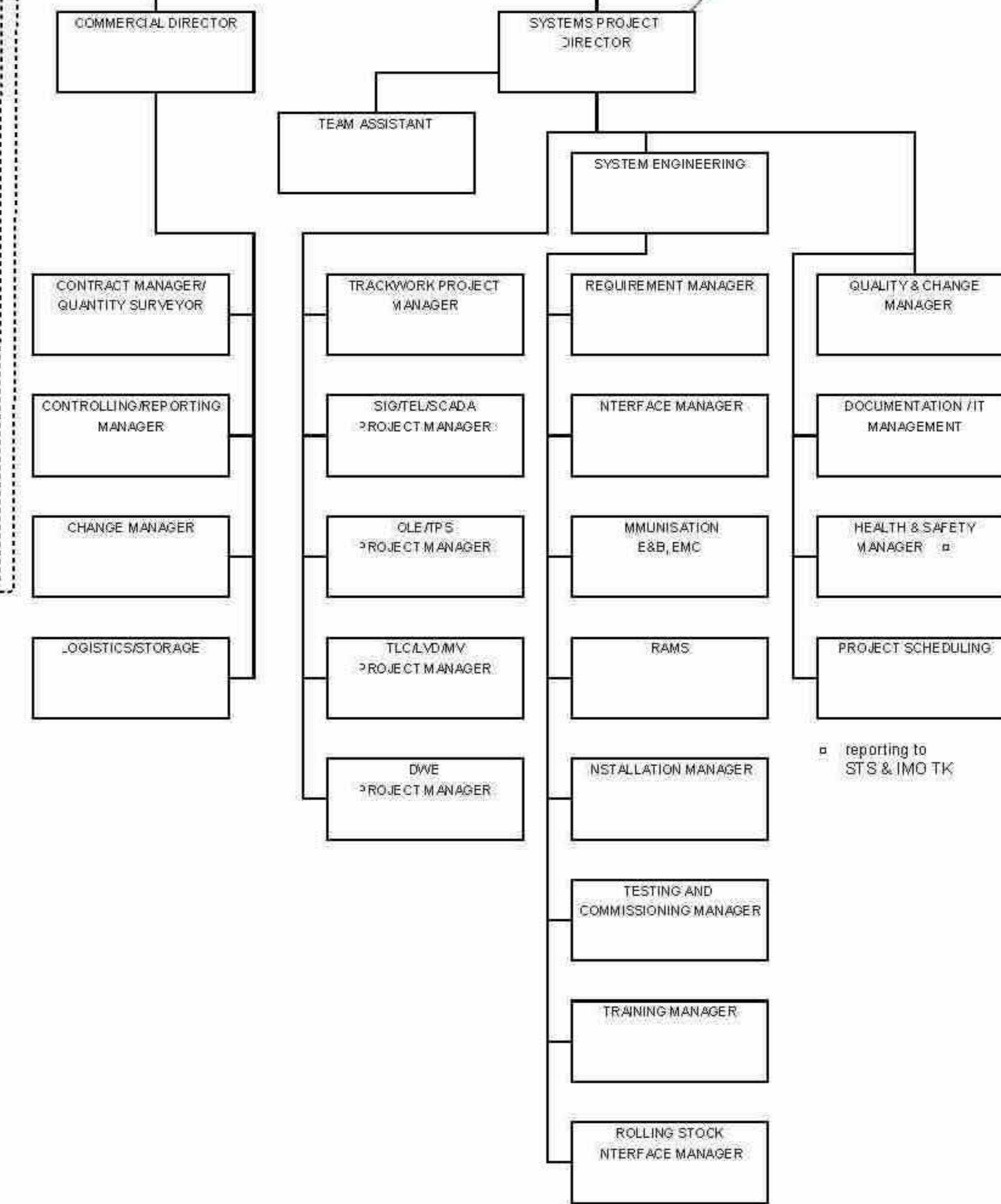


REFER TO CIVIL WORKS TEAM ORGANISATION DIAGRAM

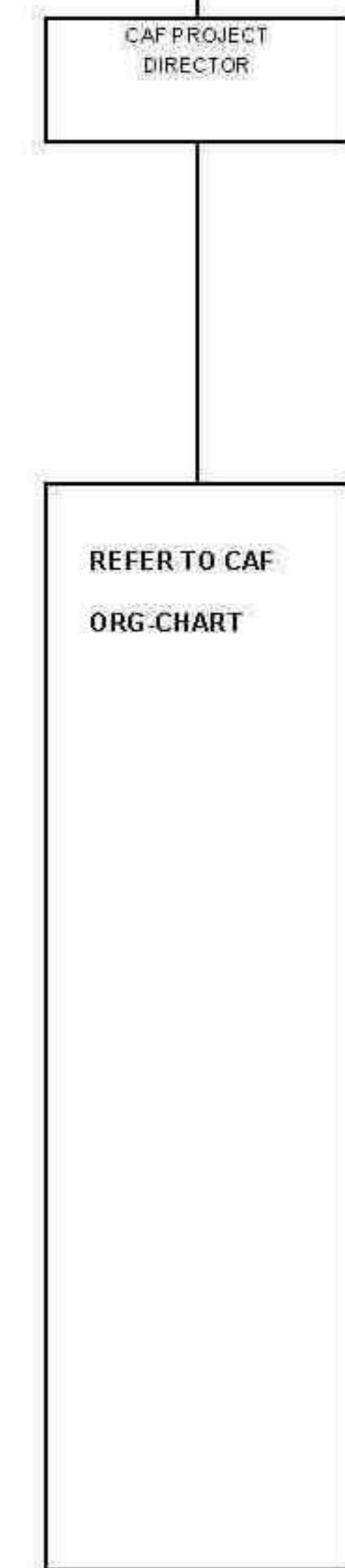
**CONSORTIUM MANAGEMENT TEAM**



**SIEMENS SYSTEMS TEAM**  
REFER TO SIEMENS ORG-CHART DIAGRAMM



**CAF TEAM**

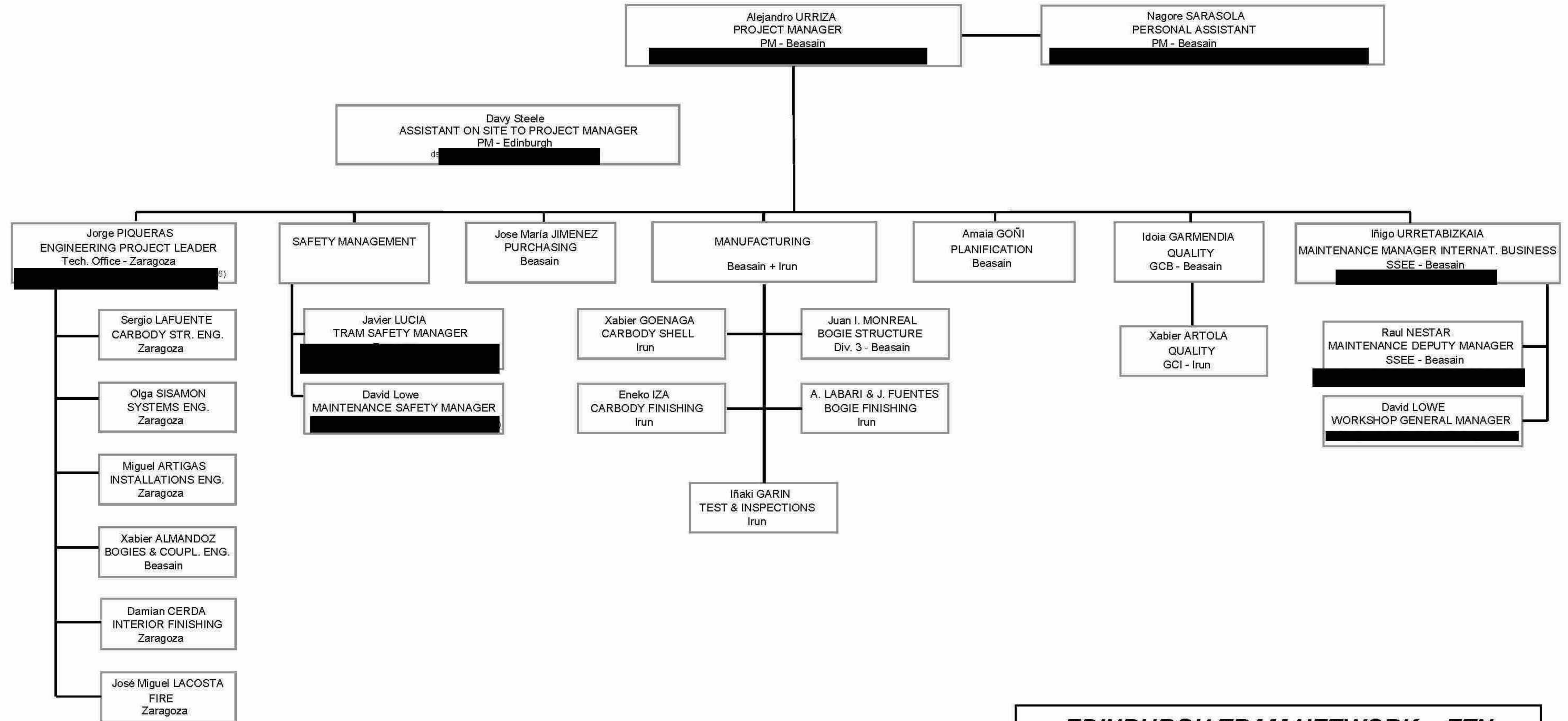


**EDINBURGH TRAM NETWORK  
INFRACO ORGANISATION CHART**

REV 15 : 01.04.09



# Construcciones y Auxiliar de Ferrocarriles, S.A.



**EDINBURGH TRAM NETWORK – ETN**

**CAF Organizational Chart – V2.0**

2009/04/07



**Bilfinger Berger – Siemens – CAF Consortium**

## **10.9 Production of Design**



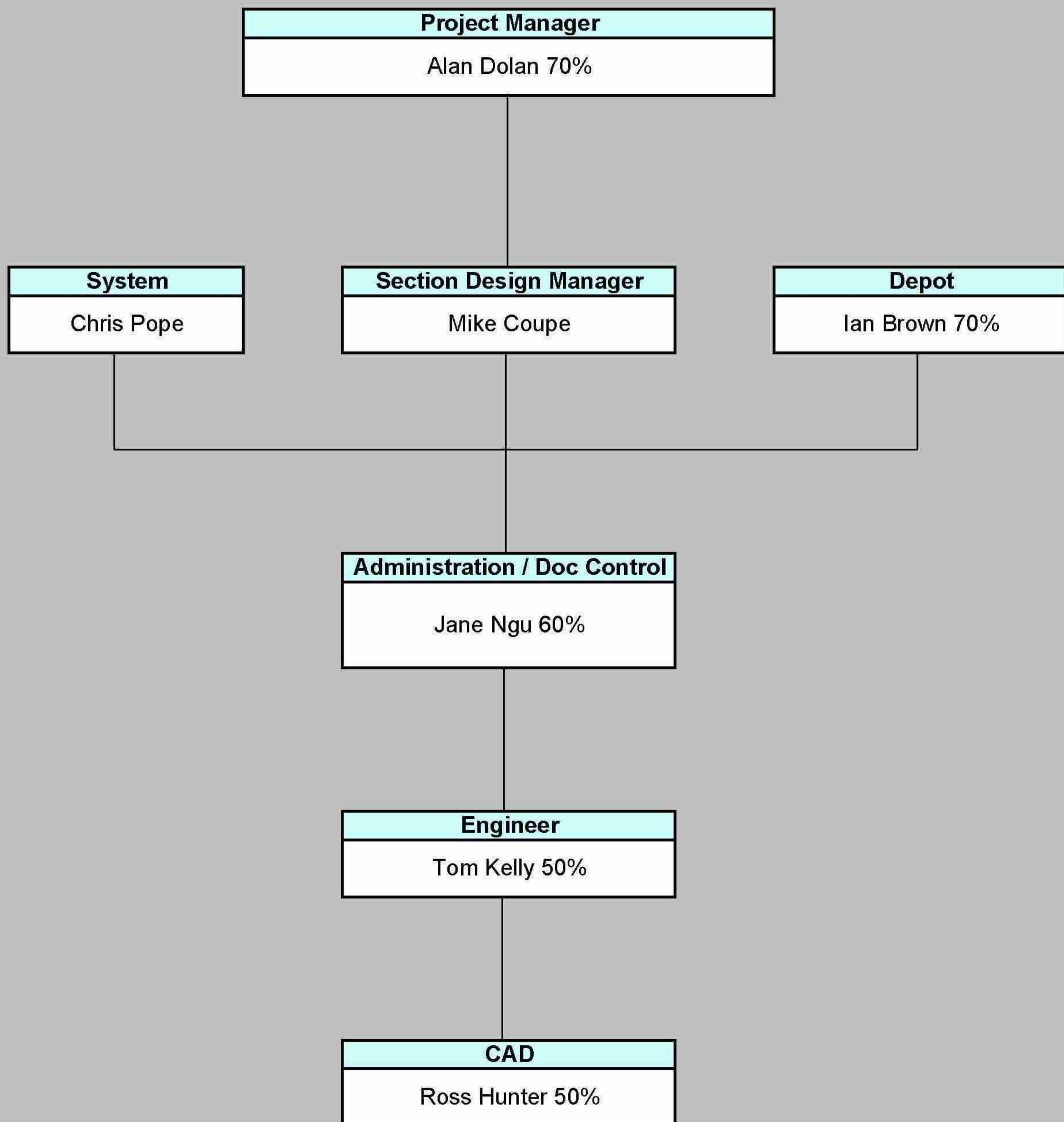
### **10.9.1 Development Schedule**



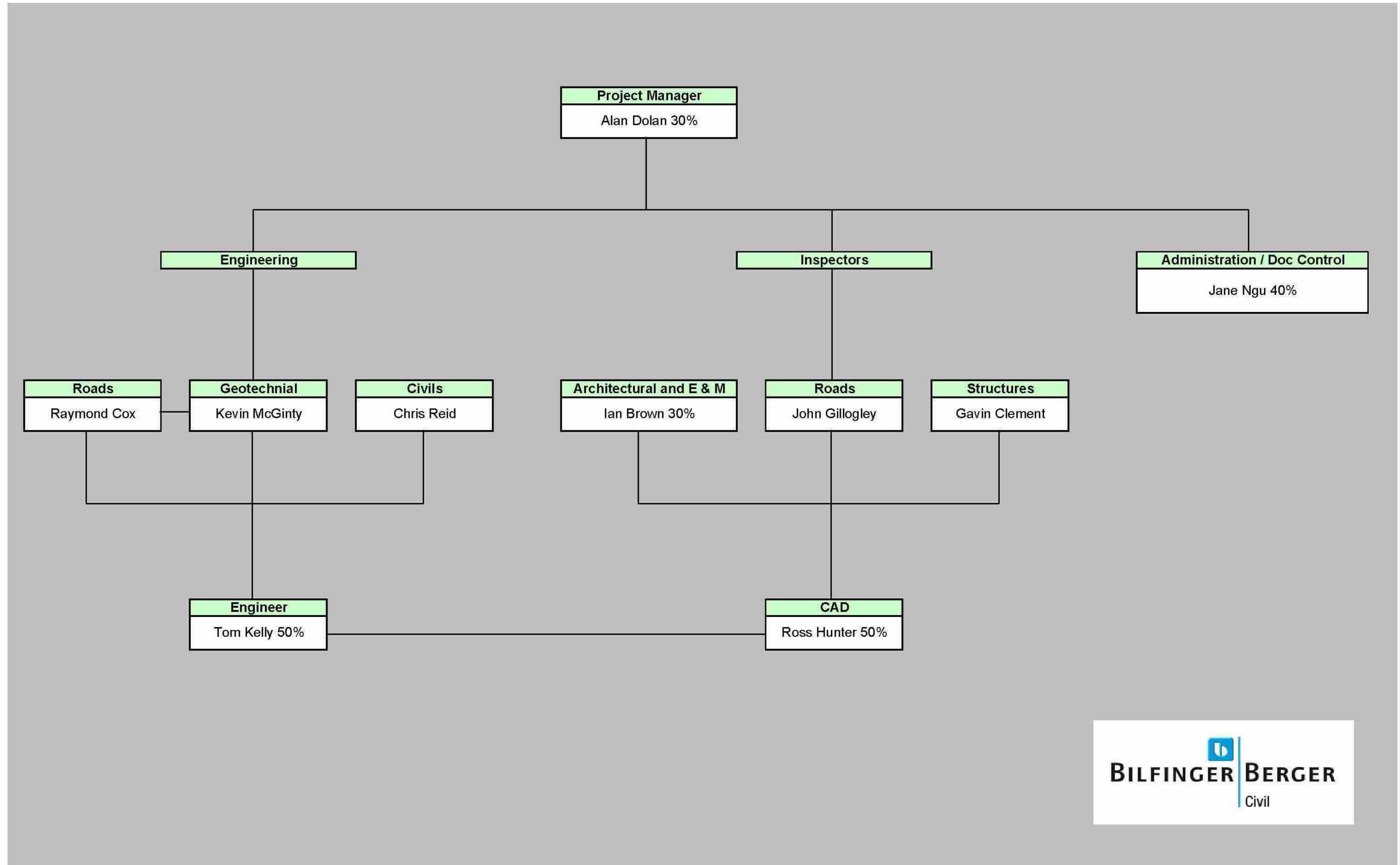
**Bilfinger Berger – Siemens – CAF Consortium**

**10.9.2 Proposed Staffing Chart (Construction Support)**











**Bilfinger Berger – Siemens – CAF Consortium**

**10.10 Issues and Concerns**

**Not Applicable**