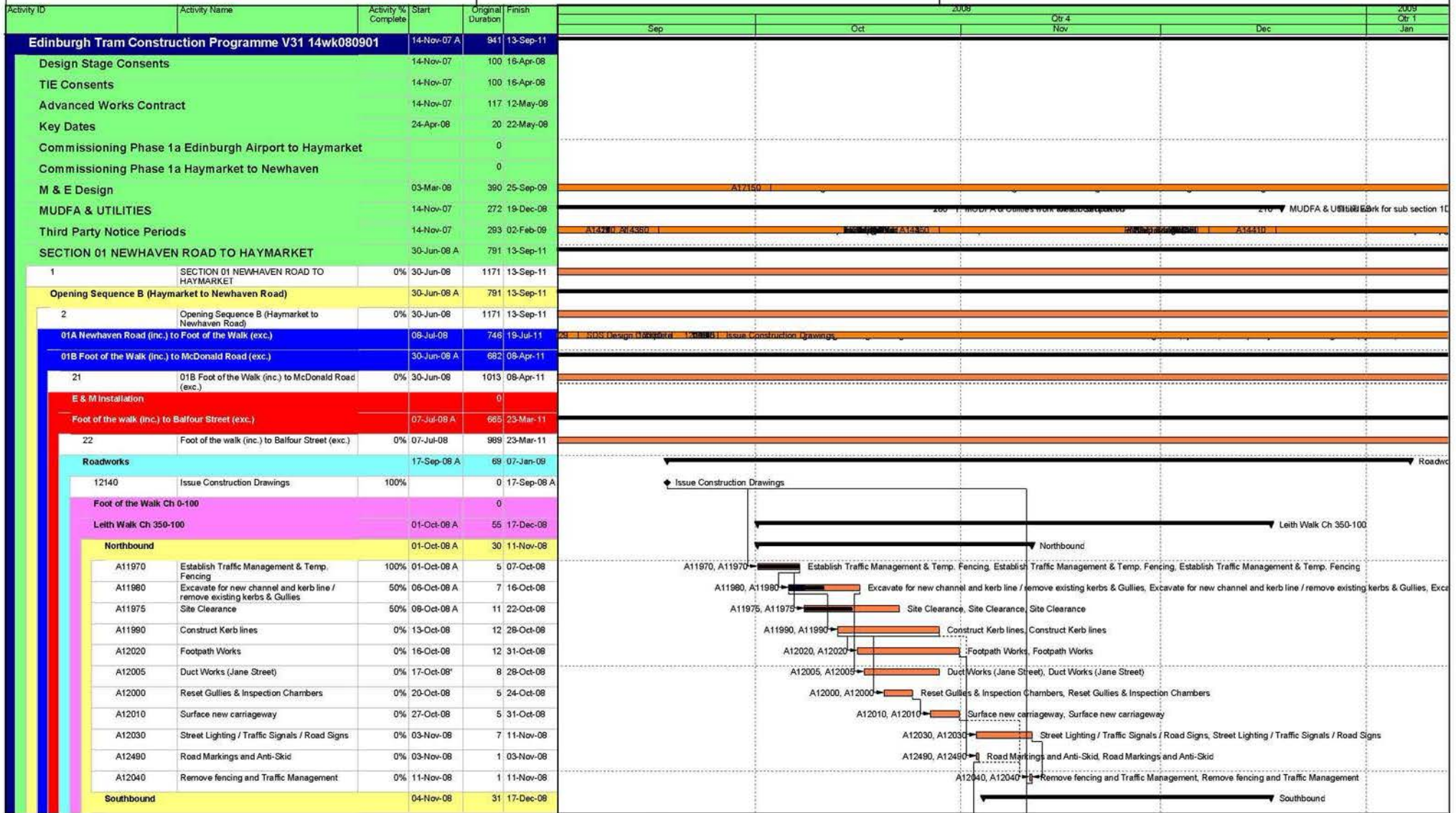


10.3 Look Ahead Programme

Four Month Look Ahead Programme

September - December 2008

EDINBURGH TRAM NETWORK



Date	Revision	Chc...	Approved
29-Aug-08		scs	
05-Sep-08	Converted to 4 mo Look Ahead Sept - Dec 2008	JAC	
19-Sep-08	S29 Package Contractor's Section Updated	JAC	
30-Sep-08	Leith Walk updated for Period 7 Progress Report	JAC	
28-Oct-08	Progress and IFCs updated	JAC	

Page 1 of 12

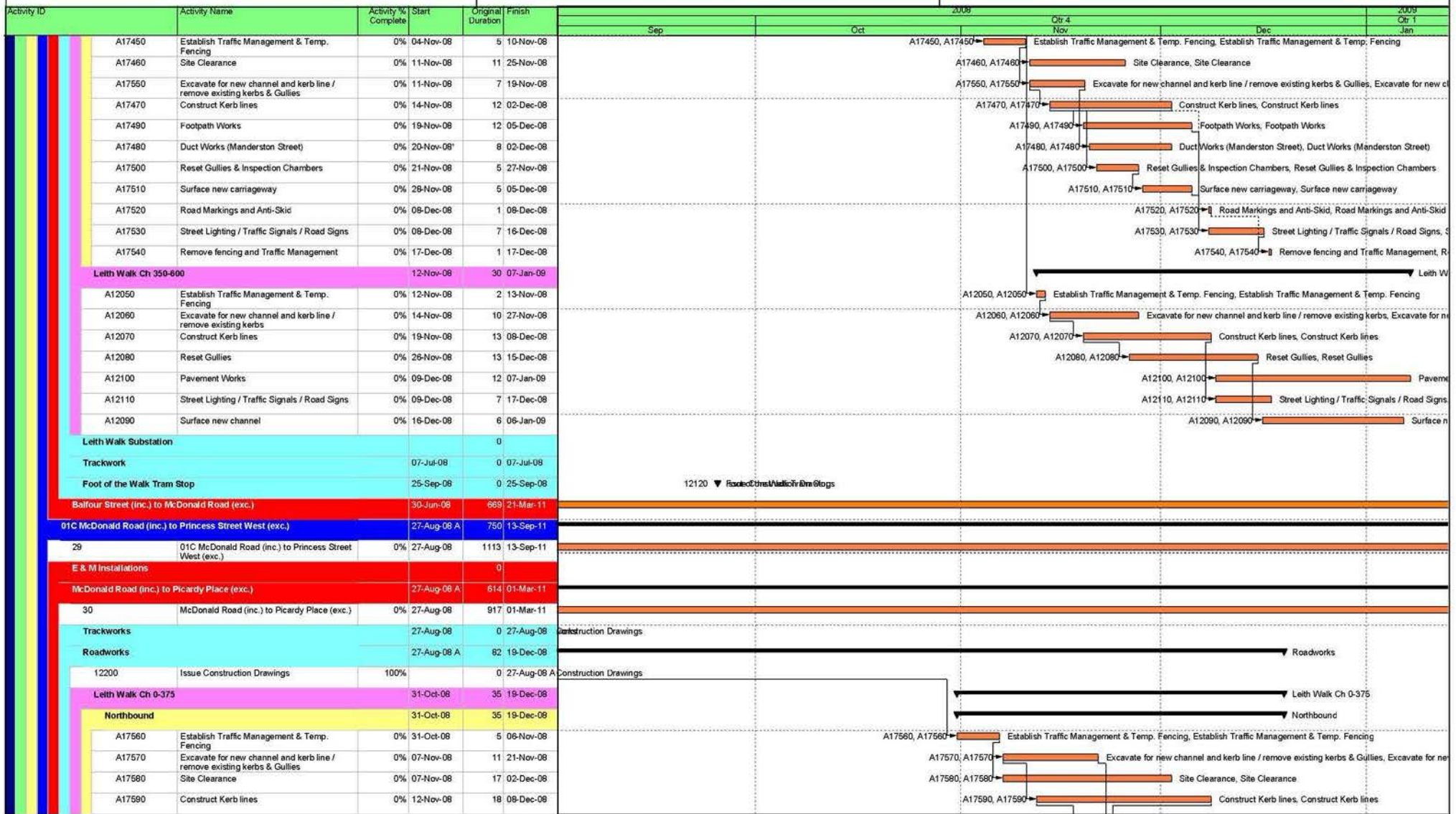
█ Actual Work
█ Normal
█ Remaining Work
◆ Milestone
▬ % Complete

Four Month Look Ahead Programme

EDINBURGH TRAM NETWORK



September - December 2008



Date	Revision	Chc...	Approved
29-Aug-08		scs	
05-Sep-08	Converted to 4 mo Look Ahead Sept - Dec 2008	JAC	
19-Sep-08	S29 Package Contractor's Section Updated	JAC	
30-Sep-08	Leith Walk updated for Period 7 Progress Report	JAC	
28-Oct-08	Progress and IFCs updated	JAC	

Page 2 of 12

- Actual Work
- Normal
- Remaining Work
- Milestone
- % Complete

Summary

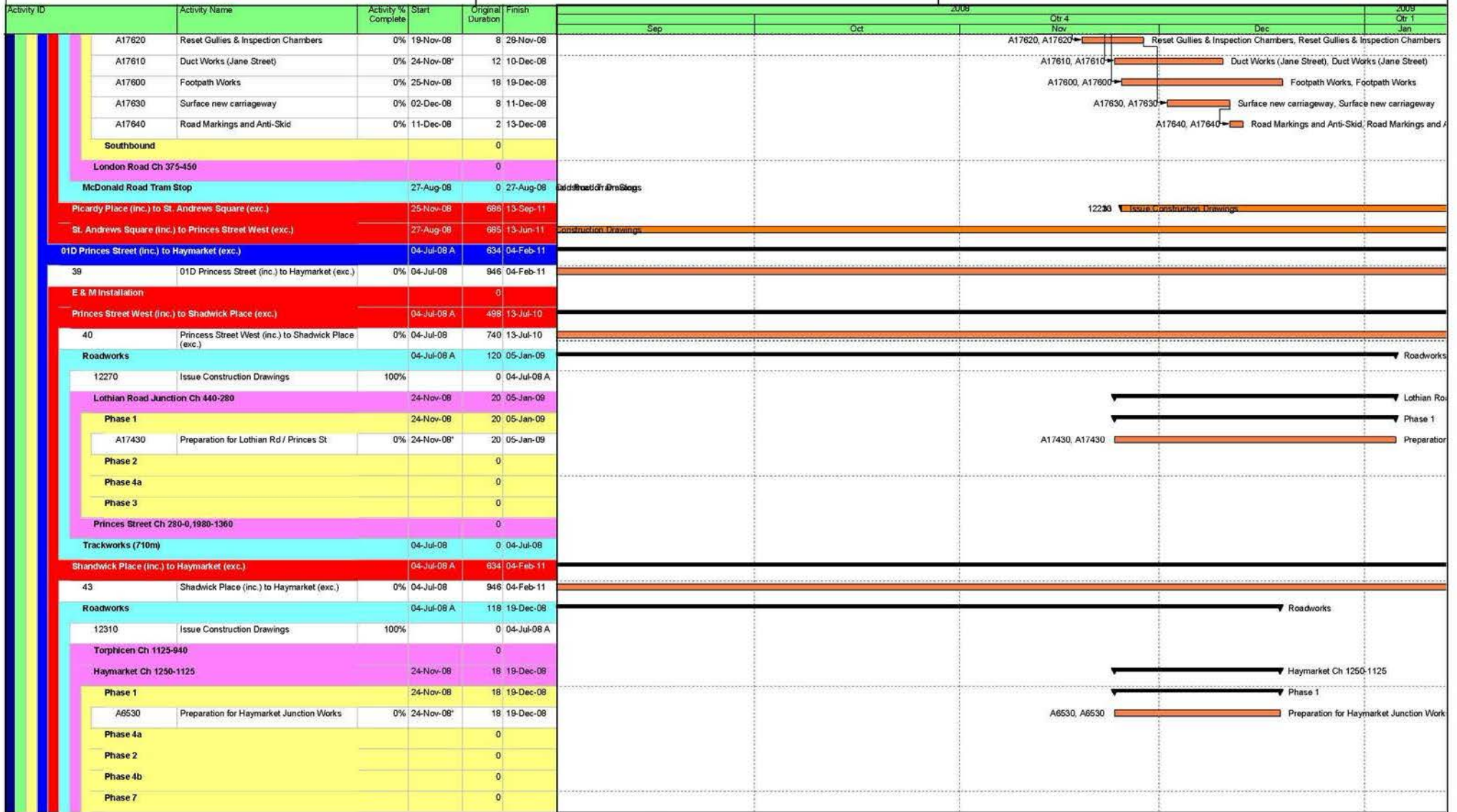
CEC01169379_0095

Four Month Look Ahead Programme

EDINBURGH TRAM NETWORK



September - December 2008



Date	Revision	Chc...	Approved
29-Aug-08		scs	
05-Sep-08	Converted to 4 mo Look Ahead Sept - Dec 2008	JAC	
19-Sep-08	S29 Package Contractor's Section Updated	JAC	
30-Sep-08	Leith Walk updated for Period 7 Progress Report	JAC	
28-Oct-08	Progress and IFCs updated	JAC	

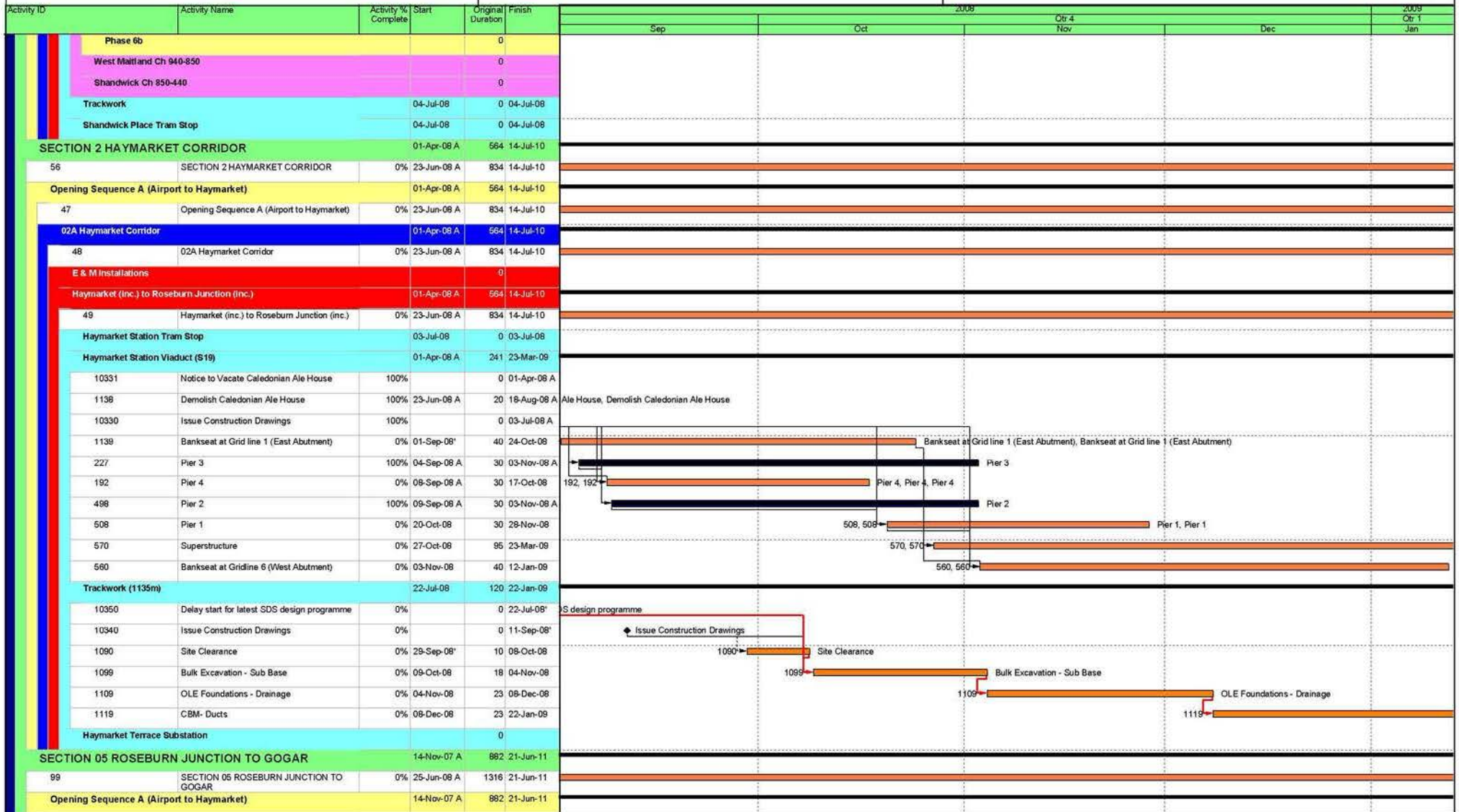
- Actual Work
- Normal
- Remaining Work
- Milestone
- % Complete
- Summary

Four Month Look Ahead Programme

EDINBURGH TRAM NETWORK



September - December 2008



Date	Revision	Chec...	Approved
29-Aug-08		scs	
05-Sep-08	Converted to 4 mo Look Ahead Sept - Dec 2008	JAC	
19-Sep-08	S29 Package Contractor's Section Updated	JAC	
30-Sep-08	Leith Walk updated for Period 7 Progress Report	JAC	
28-Oct-08	Progress and IFCs updated	JAC	

- Actual Work
- Normal
- Remaining Work
- Milestone
- % Complete
- Summary

CEC01169379_0097

Four Month Look Ahead Programme

September - December 2008

EDINBURGH TRAM NETWORK



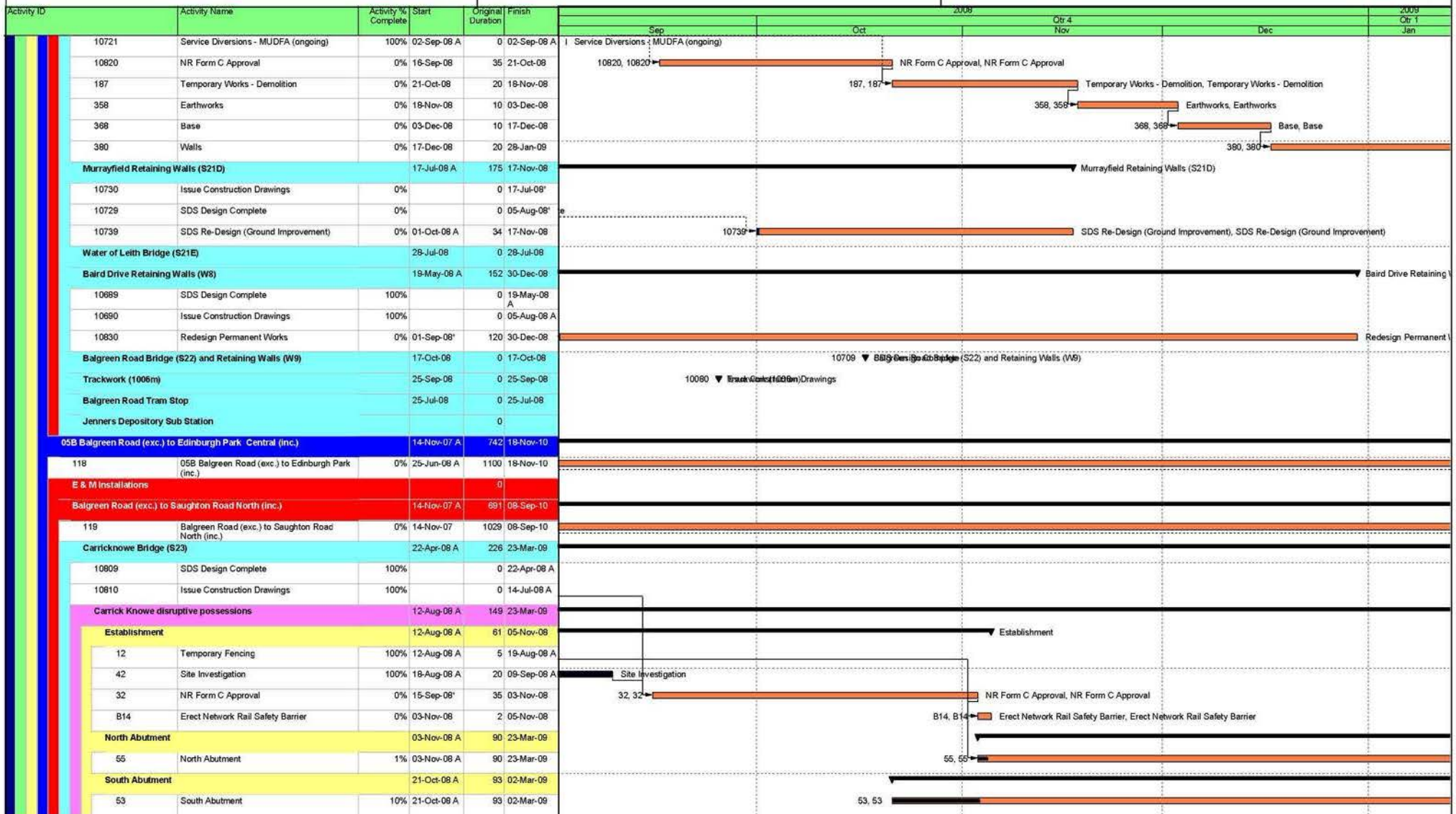
Date	Revision	Chec...	Approved
29-Aug-08		scs	
05-Sep-08	Converted to 4 mo Look Ahead Sept - Dec 2008	JAC	
19-Sep-08	S29 Package Contractor's Section Updated	JAC	
30-Sep-08	Leith Walk updated for Period 7 Progress Report	JAC	
28-Oct-08	Progress and IFCs updated	JAC	

- █ Actual Work
- █ Normal
- █ Remaining Work
- ◆ Milestone
- ▬ % Complete
- ▬ Summary

Four Month Look Ahead Programme

September - December 2008

EDINBURGH TRAM NETWORK



Date	Revision	Chec...	Approved
29-Aug-08		scs	
05-Sep-08	Converted to 4 mo Look Ahead Sept - Dec 2008	JAC	
19-Sep-08	S29 Package Contractor's Section Updated	JAC	
30-Sep-08	Leith Walk updated for Period 7 Progress Report	JAC	
28-Oct-08	Progress and IFCs updated	JAC	

Page 6 of 12

- Actual Work
- Normal
- Remaining Work
- Summary
- Milestone
- % Complete

CEC01169379_0099

Four Month Look Ahead Programme

September - December 2008

EDINBURGH TRAM NETWORK



Date	Revision	Chec...	Approved
29-Aug-08		scs	
05-Sep-08	Converted to 4 mo Look Ahead Sept - Dec 2008	JAC	
19-Sep-08	S29 Package Contractor's Section Updated	JAC	
30-Sep-08	Leith Walk updated for Period 7 Progress Report	JAC	
28-Oct-08	Progress and IFCs updated	JAC	

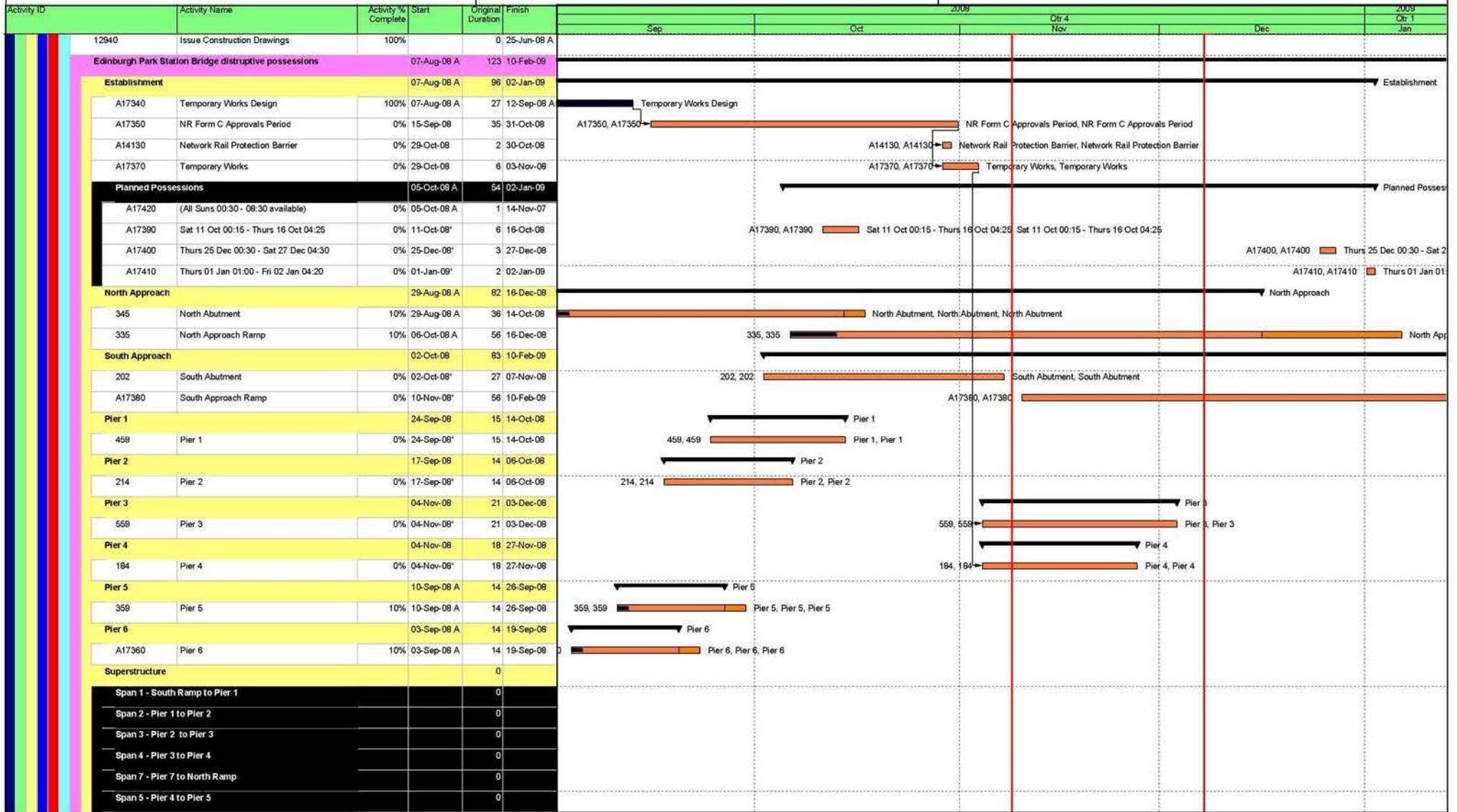
- █ Actual Work
- █ Normal
- █ Remaining Work
- ◆ Milestone
- ▬ % Complete
- ▬ Summary

CEC01169379_0100

Four Month Look Ahead Programme

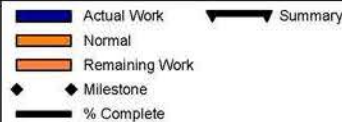
September - December 2008

EDINBURGH TRAM NETWORK



Date	Revision	Chec...	Approved
29-Aug-08		scs	
05-Sep-08	Converted to 4 mo Look Ahead Sept - Dec 2008	JAC	
19-Sep-08	S29 Package Contractor's Section Updated	JAC	
30-Sep-08	Leith Walk updated for Period 7 Progress Report	JAC	
28-Oct-08	Progress and IFCs updated	JAC	

Page 8 of 12



CEC01169379_0101

Four Month Look Ahead Programme

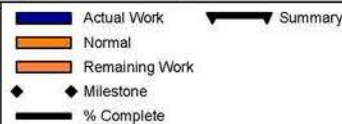
September - December 2008

EDINBURGH TRAM NETWORK



Date	Revision	Chec...	Approved
29-Aug-08		scs	
05-Sep-08	Converted to 4 mo Look Ahead Sept - Dec 2008	JAC	
19-Sep-08	S29 Package Contractor's Section Updated	JAC	
30-Sep-08	Leith Walk updated for Period 7 Progress Report	JAC	
28-Oct-08	Progress and IFCs updated	JAC	

Page 9 of 12

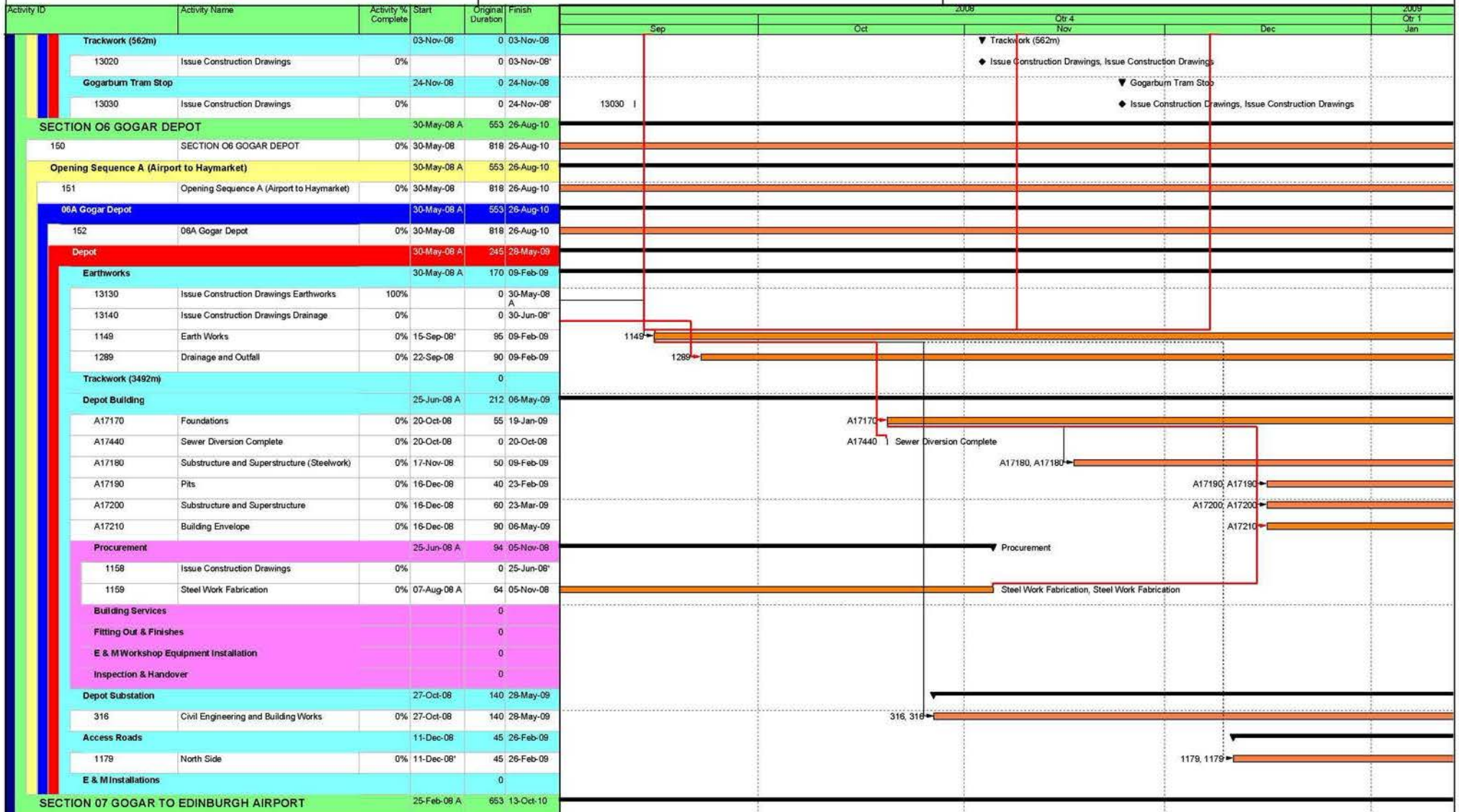


CEC01169379_0102

Four Month Look Ahead Programme

September - December 2008

EDINBURGH TRAM NETWORK



Date	Revision	Chc...	Approved
29-Aug-08		scs	
05-Sep-08	Converted to 4 mo Look Ahead Sept - Dec 2008	JAC	
19-Sep-08	S29 Package Contractor's Section Updated	JAC	
30-Sep-08	Leith Walk updated for Period 7 Progress Report	JAC	
28-Oct-08	Progress and IFCs updated	JAC	

- Actual Work
- Normal
- Remaining Work
- Milestone
- % Complete
- Summary

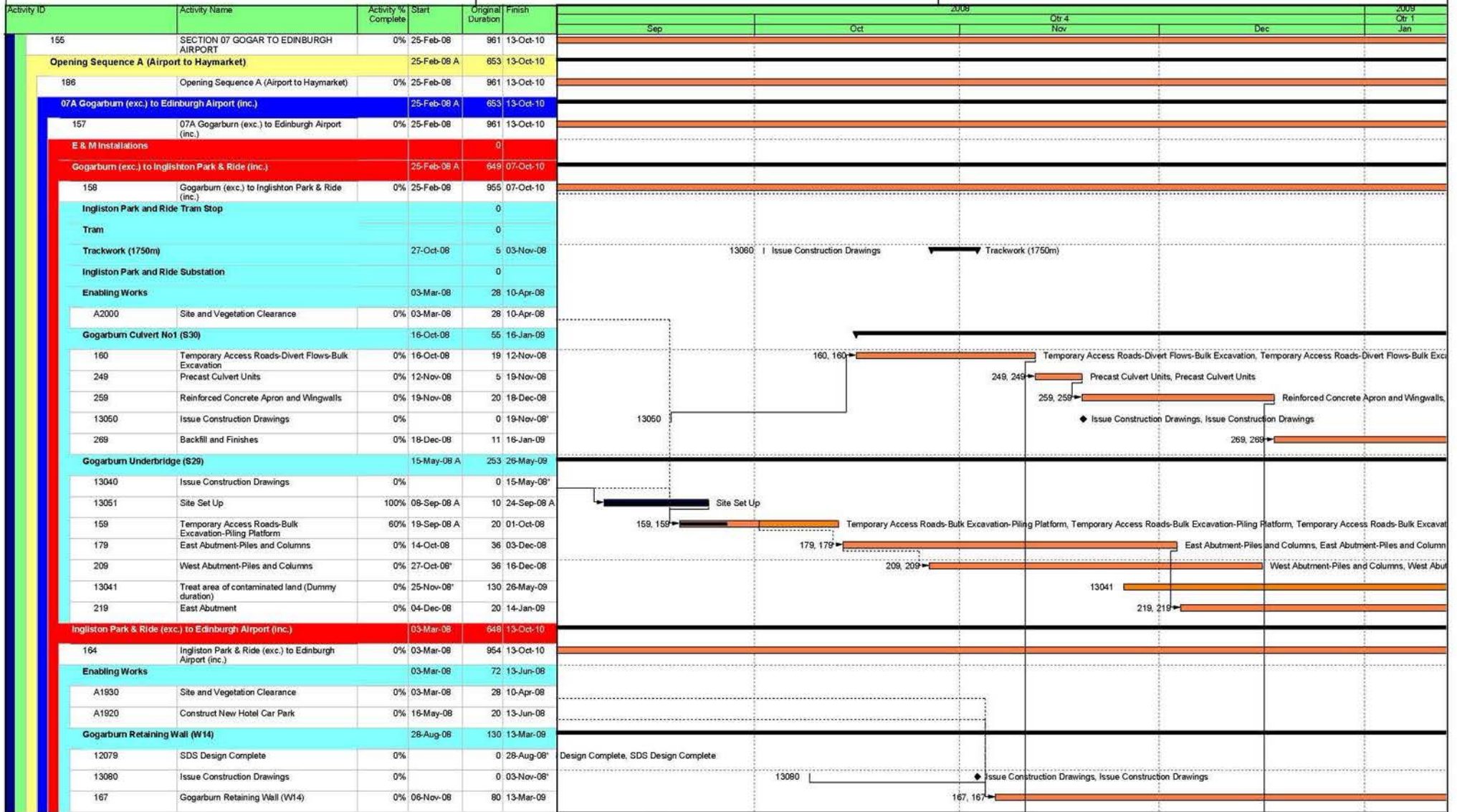
CEC01169379_0103

Four Month Look Ahead Programme

EDINBURGH TRAM NETWORK



September - December 2008



Date	Revision	Chc...	Approved
29-Aug-08		scs	
05-Sep-08	Converted to 4 mo Look Ahead Sept - Dec 2008	JAC	
19-Sep-08	S29 Package Contractor's Section Updated	JAC	
30-Sep-08	Leith Walk updated for Period 7 Progress Report	JAC	
28-Oct-08	Progress and IFCs updated	JAC	

█ Actual Work █ Normal
█ Remaining Work
◆ Milestone
▬ % Complete

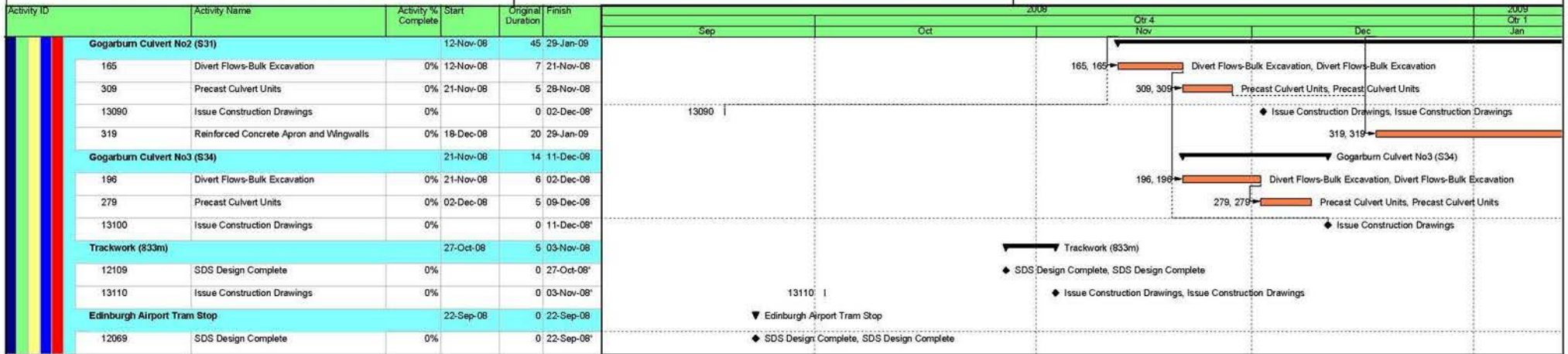
▬ Summary

CEC01169379_0104

Four Month Look Ahead Programme

September - December 2008

EDINBURGH TRAM NETWORK



Date	Revision	Chec...	Approved
29-Aug-08		scs	
05-Sep-08	Converted to 4 mo Look Ahead Sept - Dec 2008	JAC	
19-Sep-08	S29 Package Contractor's Section Updated	JAC	
30-Sep-08	Leith Walk updated for Period 7 Progress Report	JAC	
28-Oct-08	Progress and IFCs updated	JAC	

- Actual Work
- Normal
- Remaining Work
- Milestone
- % Complete
- Summary

10.4 Tram Programme



SUPPLY OF 27 TRAMS FOR THE EDINBURGH TRAM NETWORK
PROJECT PLANNING up to 8 of November

Id	Name	%	Start	Finish	2008												2009												2010												2011											
					M	A	M	J	J	A	S	O	N	D	E	F	M	A	M	J	J	A	S	O	N	D	E	F	M	A	M	J	J	A	S	O	N	D	E	F	M	A	M	J	J							
1	GENERAL	100%	06/05/08	06/05/08																																																
2	NTP	100%	06/05/08	06/05/08																																																
3	ENGINEERING	60%	06/05/08	15/05/09																																																
4	BASIC ENGINEERING	97%	06/05/08	13/11/08																																																
5	MOCK-UP	100%	13/05/08	05/11/08																																																
6	DESIGN & MANUFACTURING MOCK-UP	100%	13/05/08	29/09/08																																																
7	APPROVAL MOCK-UP	100%	30/09/08	05/11/08																																																
8	UNDERFRAME DESIGN	87%	01/07/08	24/11/08																																																
9	CARBODY DESIGN	61%	28/08/08	08/01/09																																																
10	LIST OF STEEL MATERIALS	100%	11/06/08	11/06/08																																																
11	INSTALLATIONS DESIGN	11%	30/09/08	13/04/09																																																
12	INTERIORS & FINISHING DESIGN	0%	25/11/08	15/05/09																																																
13	BOGIES DESIGN	61%	23/07/08	15/01/09																																																
14	1st TRAMSET PROCUREMENT	40%	06/05/08	01/07/09																																																
15	SYSTEMS	51%	06/05/08	01/07/09																																																
16	SPECIFICATIONS	100%	06/05/08	04/06/08																																																
17	SELECTION OF SUPPLIERS	100%	21/05/08	01/07/08																																																
18	ORDERS	100%	17/06/08	29/07/08																																																
19	INTERFACE 1- Systems Interface Basic Definition	100%	30/07/08	15/10/08																																																
20	INTERFACE 2- Systems Interface Complete Definition	74%	25/09/08	24/11/08																																																
21	MANUFACTURING & PURCHASING & TESTING	33%	27/06/08	01/07/09																																																
22	DELIVERY PREASSEMBLIES COMPONENTS	0%	15/04/09	15/04/09																																																
23	DELIVERY FIRST EQUIPMENT	0%	15/04/09	01/07/09																																																
24	OTHERS COMPONENTS & MATERIALS	27%	11/06/08	25/06/09																																																
25	STEEL MATERIALS	89%	11/06/08	24/11/08																																																
26	CARBODY COMPONENTS	12%	24/10/08	16/03/09																																																
27	INSTALLATIONS COMPONENTS	0%	16/12/08	08/05/09																																																
28	INTERIORS & FINISHING COMPONENTS	0%	17/02/09	25/08/09																																																
29	1st TRAM MANUFACTURING & TESTING	0%	14/11/08	04/06/10																																																
30	BODYSHELLS MANUFACTURING	0%	14/11/08	02/06/09																																																
31	JIGS & TOOLING MANUFACTURING	0%	14/11/08	16/03/09																																																
32	FRAME TOOLING	0%	14/11/08	09/02/09																																																
33	BODYSHELL TOOLING	0%	12/01/09	16/03/09																																																
34	1st BODYSHELL MANUFACTURING	0%	25/11/08	16/04/09																																																
35	FIRST PIECES LOT	0%	25/11/08	07/01/09																																																
36	FRAME'S SUBASSEMBLIES	0%	08/01/09	06/02/09																																																
37	FRAME ASSEMBLY & WELDING	0%	09/02/09	12/03/09																																																
38	FRAME FAI	0%	13/03/09	13/03/09																																																
39	BODYSHELL'S SUBASSEMBLIES	0%	09/02/09	13/03/09																																																
40	BODYSHELL ASSEMBLY & WELDING	0%	16/03/09	15/04/09																																																
41	BODYSHELL FAI	0%	16/04/09	16/04/09																																																
42	REMAINING BODYSHELLS MANUFACTURING	0%	18/02/09	02/06/09																																																
43	2nd BODYSHELL MANUFACTURING	0%	18/02/09	22/04/09																																																

Bus Tracker & TPDS information not yet available



SUPPLY OF 27 TRAMS FOR THE EDINBURGH TRAM NETWORK
PROJECT PLANNING up to 8 of November

Id	Name	%	Start	Finish	2008												2009												2010												2011											
					M	A	M	J	J	A	S	O	N	D	E	F	M	A	M	J	J	A	S	O	N	D	E	F	M	A	M	J	J	A	S	O	N	D	E	F	M	A	M	J	J							
67	REMAINING TRAM'S	0%	18/03/09	04/02/11	[Gantt bar from 18/03/09 to 04/02/11]																																															
68	2nd Tram	0%	18/03/09	04/06/10	[Gantt bar from 18/03/09 to 04/06/10]																																															
69	BODYSHELLS MANUFACTURING & FINISHING	0%	18/03/09	24/12/09	[Task bar from 18/03/09 to 24/12/09]																																															
70	FACTORY & DYNAMIC TESTS	0%	09/12/09	19/04/10	[Task bar from 09/12/09 to 19/04/10]																																															
71	TRANSPORT	0%	19/04/10	10/05/10	[Task bar from 19/04/10 to 10/05/10]																																															
72	DELIVERY OF THE TRAM	0%	10/05/10	10/05/10	[Task bar from 10/05/10 to 10/05/10]																																															
73	COMMISSIONING OF THE TRAM	0%	10/05/10	04/06/10	[Task bar from 10/05/10 to 04/06/10]																																															
74	3rd Tram	0%	07/04/09	04/06/10	[Gantt bar from 07/04/09 to 04/06/10]																																															
75	BODYSHELLS MANUFACTURING & FINISHING	0%	07/04/09	20/01/10	[Task bar from 07/04/09 to 20/01/10]																																															
76	FACTORY & DYNAMIC TESTS	0%	05/01/10	19/04/10	[Task bar from 05/01/10 to 19/04/10]																																															
77	TRANSPORT	0%	19/04/10	10/05/10	[Task bar from 19/04/10 to 10/05/10]																																															
78	DELIVERY OF THE TRAM	0%	10/05/10	10/05/10	[Task bar from 10/05/10 to 10/05/10]																																															
79	COMMISSIONING OF THE TRAM	0%	10/05/10	04/06/10	[Task bar from 10/05/10 to 04/06/10]																																															
80	4th Tram	0%	29/04/09	04/06/10	[Gantt bar from 29/04/09 to 04/06/10]																																															
81	BODYSHELLS MANUFACTURING & FINISHING	0%	29/04/09	09/02/10	[Task bar from 29/04/09 to 09/02/10]																																															
82	FACTORY & DYNAMIC TESTS	0%	25/01/10	19/04/10	[Task bar from 25/01/10 to 19/04/10]																																															
83	TRANSPORT	0%	19/04/10	10/05/10	[Task bar from 19/04/10 to 10/05/10]																																															
84	DELIVERY OF THE TRAM	0%	10/05/10	10/05/10	[Task bar from 10/05/10 to 10/05/10]																																															
85	COMMISSIONING OF THE TRAM	0%	10/05/10	04/06/10	[Task bar from 10/05/10 to 04/06/10]																																															
86	5th Tram	0%	20/05/09	04/06/10	[Gantt bar from 20/05/09 to 04/06/10]																																															
87	BODYSHELLS MANUFACTURING & FINISHING	0%	20/05/09	01/03/10	[Task bar from 20/05/09 to 01/03/10]																																															
88	FACTORY & DYNAMIC TESTS	0%	12/02/10	19/04/10	[Task bar from 12/02/10 to 19/04/10]																																															
89	TRANSPORT	0%	19/04/10	10/05/10	[Task bar from 19/04/10 to 10/05/10]																																															
90	DELIVERY OF THE TRAM	0%	10/05/10	10/05/10	[Task bar from 10/05/10 to 10/05/10]																																															
91	COMMISSIONING OF THE TRAM	0%	10/05/10	04/06/10	[Task bar from 10/05/10 to 04/06/10]																																															
92	6th Tram	0%	19/06/09	05/07/10	[Gantt bar from 19/06/09 to 05/07/10]																																															
93	BODYSHELLS MANUFACTURING & FINISHING	0%	19/06/09	16/03/10	[Task bar from 19/06/09 to 16/03/10]																																															
94	FACTORY TESTS	0%	26/02/10	01/06/10	[Task bar from 26/02/10 to 01/06/10]																																															
95	TRANSPORT	0%	01/06/10	15/06/10	[Task bar from 01/06/10 to 15/06/10]																																															
96	DELIVERY OF THE TRAM	0%	15/06/10	15/06/10	[Task bar from 15/06/10 to 15/06/10]																																															
97	COMMISSIONING OF THE TRAM	0%	15/06/10	05/07/10	[Task bar from 15/06/10 to 05/07/10]																																															
98	7th Tram	0%	21/07/09	05/07/10	[Gantt bar from 21/07/09 to 05/07/10]																																															
99	BODYSHELLS MANUFACTURING & FINISHING	0%	21/07/09	31/03/10	[Task bar from 21/07/09 to 31/03/10]																																															
100	FACTORY TESTS	0%	15/03/10	01/06/10	[Task bar from 15/03/10 to 01/06/10]																																															
101	TRANSPORT	0%	01/06/10	15/06/10	[Task bar from 01/06/10 to 15/06/10]																																															
102	DELIVERY OF THE TRAM	0%	15/06/10	15/06/10	[Task bar from 15/06/10 to 15/06/10]																																															
103	COMMISSIONING OF THE TRAM	0%	15/06/10	05/07/10	[Task bar from 15/06/10 to 05/07/10]																																															
104	8th Tram	0%	17/09/09	04/08/10	[Gantt bar from 17/09/09 to 04/08/10]																																															
105	BODYSHELLS MANUFACTURING & FINISHING	0%	17/09/09	15/04/10	[Task bar from 17/09/09 to 15/04/10]																																															
106	FACTORY TESTS	0%	30/03/10	01/07/10	[Task bar from 30/03/10 to 01/07/10]																																															
107	TRANSPORT	0%	01/07/10	15/07/10	[Task bar from 01/07/10 to 15/07/10]																																															
108	DELIVERY OF THE TRAM	0%	15/07/10	15/07/10	[Task bar from 15/07/10 to 15/07/10]																																															
109	COMMISSIONING OF THE TRAM	0%	15/07/10	04/08/10	[Task bar from 15/07/10 to 04/08/10]																																															

10.5 RFI Register

Process Register

Company Bifinger Berger Civil
Channel etn



Status	System Ref	WorkPackage Ref	Publishing Company	Title	Content	Publishing User	Issued Date
Open	RFI-00003	BSC-3	Bifinger Berger Civil	RFI 003- WATER MAIN, GOGAR DEPOT	WATER MAIN - GOGAR DEPOT Issued 19.05.08 Response Received 05.06.08 - TRN-01355	Jim Cumberton	22/07/2008 14:10:20
Open	RFI-00008	BSC-8	Bifinger Berger Civil	RFI 008-ELEMENTS OF PERMANENT WORKS OUTSIDE THE LOD	ELEMENTS OF PERMANENT WORKS OUTSIDE THE LOD Issued 25.05.08 Response Received 05.06.08 - TRN-01355	Jim Cumberton	22/07/2008 14:35:47
Open	RFI-00009	BSC-9	Bifinger Berger Civil	RFI 009-PREPARATION OF BUILDING WARRANTS AT HAYMARKET	PREPARATION OF BUILDING WARRANTS AT HAYMARKET Issued 21.05.08 Response Received 05.06.08 - TRN-013	Jim Cumberton	22/07/2008 14:40:05
Open	RFI-00013	BSC-13	Bifinger Berger Civil	RFI 013-VARIOUS SITE ACTIVITIES IN THE GOGARBURN AREAS	VARIOUS SITE ACTIVITIES IN THE GOGARBURN AREAS Issued 28.05.08 Response Received 06.05.08 - TRN-01	Jim Cumberton	22/07/2008 14:54:23
Open	RFI-00014	BSC-14	Bifinger Berger Civil	RFI 014-INVASIVE SPECIES IN THE GOGARBURN AREA	INVASIVE SPECIES IN THE GOGARBURN AREA Issued 28.05.08 Response Received 05.06.08 - TRN-01355	Jim Cumberton	22/07/2008 14:58:04
Open	RFI-00048	1111-1	Graham Construction	RFI 048 - LOD AT ROSEBURN GARAGES- MURRAYFIELD SECTION 5A	LOD AT ROSEBURN GARAGES - MURRAYFIELD SECTION 5A Issued 13.06.08 Response Received 03.07.08 - TRN-	Des Millar	23/07/2008 13:52:28
Open	RFI-00050	BSC-49	Bifinger Berger Civil	RFI 050 - EXISTING DRAINAGE AT GOGARBURN	EXISTING DRAINAGE AT GOGARBURN Issued 16.06.08 Response Received 03.07.08 - TRN-01514	Jim Cumberton	23/07/2008 14:24:24
Open	RFI-00054	BSC-53	Bifinger Berger Civil	RFI 054- GIANT HOGWEED	GIANT HOGWEED Issued 18.06.08 Response Received 25.06.08 - TRN-01480	Jim Cumberton	23/07/2008 14:33:22
Open	RFI-00059	BSC-58	Siemens Transportation Systems	RFI 059 - ELECTRICITY SUPPLIES	ELECTRICITY SUPPLIES Issued 25.06.08 response Received 03.07.08 - TRN-01512	Nigel Baskerville	24/07/2008 06:58:55
Open	RFI-00060	BSC-59	PB	RFI 060 - RETAINING WALLS	RETAINING WALLS Issued 27.06.08 Response Received 16.07.08 - TRN-01584	Alan Dolan	24/07/2008 07:01:16

CEC01169379_0115

Process Register

Company Bilfinger Berger Civil
Channel etn



Open	RFI-00065	BSC-64	Siemens Transportation Systems	RFI 065 - ELECTRICITY AND METER SUPPLIER	ELECTRICITY AND METER SUPPLIER Issued 03.07.08 Resposne Received 10.07.08 - TRN-1544	Roland Brueckmann	24/07/2008 07:11:03
Open	RFI-00066	BSC-65	Bilfinger Berger Civil	RFI 066 - POLE STAY AT BAIRD DRIVE	POLE STAY AT BAIRD DRIVE Issued 03.07.08 Response Received 09.07.08 - TRN-01538	Jim Cumberton	24/07/2008 07:12:22
Open	RFI-00067	BSC-66	Siemens Transportation Systems	RFI 067- TRACTION POWER RATING IN DEPOT TRACTION SUBSTATION	TRACTION POWER RATING IN DEPOT TRACTION SUBSTATION Issued 04.07.08 Response Received 09.07.08 - TR	Roland Brueckmann	24/07/2008 07:14:10
Open	RFI-00069	BSC-68	Graham Construction	RFI 069- INVASIVE WEEDS TREATMENT	INVASIVE WEEDS TREATMENT Issued 09.07.08 Response Received 21.07.08 - TRN-01600	Des Millar	24/07/2008 07:17:14
Open	RFI-00070	BSC-69	Graham Construction	RFI 070 - LIGHT COLUMNS AND RAILINGS AT HAYMARKET STATION STEPS	LIGHT COLUMNS AND RAILINGS AT HAYMARKET STATION STEPS Issued 10.07.08 Response Received 16.07.08 -	Des Millar	24/07/2008 07:18:58
Open	RFI-00071	BSC-70	Bilfinger Berger Civil	RFI 071- LEVEL OF WATER MAIN DIVERSION - DEPOT	LEVEL OF WATER MAIN DIVERSION - DEPOT Issued 11.07.08 Response Received 18.07.08 - TRN-01596	Jim Cumberton	24/07/2008 07:20:23
Open	RFI-00072	BSC-71	Siemens Transportation Systems	RFI 072 - RAILSECTION 59R2 / 60R2	RAILSECTION 59R2 / 60R2 Issued 11.07.08 Response Received 18.07.08 - TRN-01593	Robert Kraemer	24/07/2008 07:23:24
Open	RFI-00073	BSC-72	Siemens Transportation Systems	RFI 073 - DEPOT TRANSFORMER	DEPOT TRANSFORMER Issued 11.07.08 Response Received 16.07.08 - TRN-01584	Robert Kraemer	24/07/2008 07:24:40
Open	RFI-00074	BSC-73	Siemens Transportation Systems	RFI 074 - WASHING PLANT DESIGN	WASHING PLANT DESIGN Issued 11.07.08 Response Received 16.07.08 - TRN-01584	Norbert Wunder	24/07/2008 07:34:04
Open	RFI-00075	BSC-74	Siemens Transportation Systems	RFI 075 - REQUIREMENTS FPR FLOATING SLAB	REQUIREMENTS FPR FLOATING SLAB Issued 11.07.08 Response Received 21.07.08 - TRN-01600	Robert Kraemer	24/07/2008 07:38:42
Open	RFI-00076	BSC-75	Siemens Transportation Systems	RFI 076 - DATA REQUIRED FOR NEW ELECTRICITY APPLICATIONS	DATA REQUIRED FOR NEW ELECTRICITY APPLICATIONS Issued 11.07.08 Response Received 18.07.08	Nigel Baskerville	24/07/2008 07:59:32

CEC01169379_0116

Process Register

Company Bilfinger Berger Civil
Channel etn



Open	RFI-00077	BSC-76	Siemens Transportation Systems	RFI 077 - RE-ISSUE OF RFI 067	RE-ISSUE OF RFI 067 Issued 14.07.08 Response Received 18.07.08 - TRN-01596	Robert Kraemer	24/07/2008 08:10:35
Open	RFI-00079	BSC-78	PB	RFI 079 - LAND	LAND Issued 18.07.08 Response Received 21.07.08	Alan Dolan	24/07/2008 08:13:30
Open	RFI-00080	BSC-79	CAF	RFI 080 - BUS TRACKER	BUS TRACKER Issued 21.07.08	Jorge Piqueras	24/07/2008 08:14:49
Open	RFI-00082	BSC-81	Siemens Transportation Systems	RFI 082 - TRAMSOP LIGHTING	TRAMSOP LIGHTING Issued 31.07.08	Roland Brueckmann	31/07/2008 15:21:50
Open	RFI-00096	BSC-95	Bilfinger Berger Civil	RFI 00096- ACCESS TO MURRAYFIELD WORKS AREAS	Please advise when the Infraco will be able to gain access to our works area adjacent to the Water o	Jim Cumberston	13/08/2008 11:53:29
Open	RFI-00098	BSC-97	Siemens Transportation Systems	RFI 00098- ETN(TRW)TIE&ABC#050013; Additional Turnouts	Drawing No. ULE90130-01-TAL-00004 Rev. 4 (see attachment) illustrates a scissor crossover as provisi	Robert Kraemer	15/08/2008 13:50:15
Open	RFI-00099	BSC-98	Siemens Transportation Systems	RFI 00099- ETN(DWE)TIE&ABC050014_ Compressed Air	Following previous versions of the ER the technical proposal for the DWE considers a Compressed Air	Robert Kraemer	15/08/2008 16:23
Open	RFI-00100	BSC-99	Siemens Transportation Systems	RFI 00100- ETN(TRW)TIE&ABC#050020 - Value Engineering TRW	Value Engineering Opportunity – Change from Embedded track to ballasted track; Tie reference: INF_CO	Klaus Dieker	20/08/2008 13:22:57
Open	RFI-00101	BSC-100	Siemens Transportation Systems	RFI 00101- ETN(SIG)TIE&ABC#050021 - Bus tracker	During a SCC coordination meeting held on the 12 of August neither tie nor Transdev were able to exp	Robert Kraemer	20/08/2008 15:07:17
Open	RFI-00102	BSC-101	Bilfinger Berger Civil	RFI 00102- DEMOLITON AT HAYMARKET DEPOT - SLOT 96, 97, 101, 102	Please advise on how to proceed with the construction of W4 Russell Road Retaining Wall. According	Carsten Mieves	22/08/2008 09:36:17
Open	RFI-00103	BSC-102	Siemens Transportation Systems	RFI 00103- ETN(SIG)TIE&ABC#050027 Timetable System	Please provide details of the tram timetable system proposed for the Edinburgh Tram project and in p	Robert Kraemer	25/08/2008 19:05:02
Open	RFI-00105		Bilfinger Berger Civil	RFI 00105- SOUTH GYLE ACCESS BRIDGE, SITE CLEARANCE OF BILLBOARDS	The site clearance of existing signs at South Gyle Access Bridge entails the "Removal and Reuse" of	John Cooper	01/09/2008 17:10:05
Open	RFI-00106		Bilfinger Berger Civil	RFI 00106 - PERMANENT ARRANGEMENTS- EDINBURGH PARK MANAGEMENT	PERMANENT ARRANGEMENTS- EDINBURGH PARK MANAGEMENT We have been asked by Edinburgh Park Management	Peter Widdowson	03/09/2008 11:38:45
Open	RFI-00107		Bilfinger Berger Civil	LOD and LLAU land available	See attached	Jim Cumberston	16/09/2008 12:40:25
Open	RFI-00108		PB	PB TQ 0005	SEE ATTACHED FILE	Emily Davies	18/09/2008 15:20:26

CEC01169379_0117

Process Register

Company Bilfinger Berger Civil
Channel etn



Open	RFI-00110		Siemens Transportation Systems	SERVICE VEHICLE PAYLOAD (ETN(DWE)TIE&ABC#050059)	In the Employer's Requirements, Section 29.14-Depot, Provisional Schedule of the Plant and Equipment	Frank Wenzel	23/09/2008 19:29:44
Open	RFI-00111		Siemens Transportation Systems	Track Support Stiffness (Please see also attached PDF-File)	See attached RFI form and the attached PDF: ETN(TRW)TIE=T&ABC_055661 Track Support Stiffness_iss2_re	Klaus Dieker	26/09/2008 16:27:04
Open	RFI-00112		Siemens Transportation Systems	Application of EN50122-2 or EN50162 standard for corrosion risk of utilities	The corrosion risk of reinforced concrete structures is assessed in BS EN 50122-2:1998, "Railway a	Robert Kraemer	29/09/2008 16:53:54
Open	RFI-00113		Siemens Transportation Systems	Application of EN50122-2 or EN50162 standard for corrosion risk of utilities	The corrosion risk of reinforced concrete structures is assessed in BS EN 50122-2:1998, "Railway app	Robert Kraemer	01/10/2008 18:36:19
Open	RFI-00114		Siemens Transportation Systems	Ducts	ER Chap 18.2 is demanding 20% spare duct capacity of the maximum sized duct. Considering the heat	Robert Kraemer	02/10/2008 13:29:17
Open	RFI-00115		PB	ULE90130-SW-TQF-00608	PB TQ 0006	Emily Davies	03/10/2008 10:15:07
Open	RFI-00116		Siemens Transportation Systems	Noise & Vibration Protecting Measures	During a meeting on the requirements for noise & vibration we have been informed by Tie, that co	Robert Kraemer	07/10/2008 18:43:47
Open	RFI-00117		Siemens Transportation Systems	Gogar Depot OLE Sectioning	The designed sectioning is flexible but complex, there is an opportunity to simplify, reduced ca	Robert Kraemer	07/10/2008 18:46:32
Open	RFI-00118		Siemens Transportation Systems	Gogar Depot OLE Sectioning	The designed sectioning is flexible but complex, there is an opportunity to simplify, r	Robert Kraemer	07/10/2008 18:48:35
Open	RFI-00119		Siemens Transportation Systems	Application of EN50122-2 or EN50162 standard for corrosion risk of utilities	The corrosion risk of reinforced concrete structures is assessed in BS EN 50122-2:1998, "Railway a	Robert Kraemer	07/10/2008 18:50:26
Open	RFI-00120		Siemens Transportation Systems	Application of EN50122-2 or EN50162 standard for corrosion risk of utilities	The corrosion risk of reinforced concrete structures is assessed in BS EN 50122-2:199	Robert Kraemer	07/10/2008 19:05:54
Open	RFI-00121		Siemens Transportation Systems	Gogar Depot OLE Sectioning	The designed sectioning is flexible but complex, there is an opportunity to simplify, r	Robert Kraemer	07/10/2008 19:08:14
Open	RFI-00122		Bilfinger Berger Civil	Combined sewer diversion section 5B ch. 520700	please confirm when the following sewer diversion will be carried out. Conflict ref. No. 5B/COM	Steven Lough	08/10/2008 15:21:21
Open	RFI-00123		Siemens Transportation Systems	Gogar Depot OLE Sectioning	The designed sectioning is flexible but complex, there is an opportunity to simplify,	Robert Kraemer	13/10/2008 10:30:41
Open	RFI-00124		Siemens Transportation Systems	Emergency Telephone Lines	In order to progress the Emergency Line requirements listed in the Employee Requirements can Tie pl	Robert Kraemer	13/10/2008 12:28:11
Open	RFI-00125		Siemens Transportation Systems	Depot PABX requirements	In order to progress the PABX design can Tie / Transdev, please specify the number of PABX exten	Robert Kraemer	20/10/2008 17:50:17
Open	RFI-00126		Siemens Transportation Systems	Emergency Telephone Lines	In order to progress the Emergency Line requirements listed in the Employee Requirements	Robert Kraemer	20/10/2008 17:51:31

CEC01169379_0118

Process Register

Company Bilfinger Berger Civil
Channel etn



Open	RFI-00128		Bilfinger Berger Civil	SECTION 1A3 – DRAFT FORTH PORTS INSTRUCTION	see attached RFI 128	Holger Plate	21/10/2008 14:13:48
------	-----------	--	------------------------	---	----------------------	--------------	---------------------

10.6 Civil Works Procurement Schedule

10.7 Change Register

ETH INFRACO NOTIFICATION OF CHANGE (NOC)

Ref	Ref.	Inf Change Order / CO	Description	Date Notified	State of Matter	Letter Ref	Approved in Principle?	Type	Change Type	Start	End	Daily Estimate (m2)	Agreed	Pricing Method	Value Estimate (m2)					Specimen Size (m2)	Agreed Cost	Action Required	Action By	Date
															SSS	BS/over	Removal	Sub-stn	OT/SP					
61	T13		Review to provide a proposal for the new one of the BSS. Detailed Material with the final design.	05/05/2008	06/06/08	SSS-ULE0030-09-LET-00259 SS-SP-0003-119 SS-SP-0004-140 SS-SP-0005-141 SS-SP-0006-142 SS-SP-0007-143 SS-SP-0008-144 SS-SP-0009-145 SS-SP-0010-146 SS-SP-0011-147 SS-SP-0012-148 SS-SP-0013-149 SS-SP-0014-150 SS-SP-0015-151 SS-SP-0016-152 SS-SP-0017-153 SS-SP-0018-154 SS-SP-0019-155 SS-SP-0020-156 SS-SP-0021-157 SS-SP-0022-158 SS-SP-0023-159 SS-SP-0024-160 SS-SP-0025-161 SS-SP-0026-162 SS-SP-0027-163 SS-SP-0028-164 SS-SP-0029-165 SS-SP-0030-166 SS-SP-0031-167 SS-SP-0032-168 SS-SP-0033-169 SS-SP-0034-170 SS-SP-0035-171 SS-SP-0036-172 SS-SP-0037-173 SS-SP-0038-174 SS-SP-0039-175 SS-SP-0040-176 SS-SP-0041-177 SS-SP-0042-178 SS-SP-0043-179 SS-SP-0044-180 SS-SP-0045-181 SS-SP-0046-182 SS-SP-0047-183 SS-SP-0048-184 SS-SP-0049-185 SS-SP-0050-186 SS-SP-0051-187 SS-SP-0052-188 SS-SP-0053-189 SS-SP-0054-190 SS-SP-0055-191 SS-SP-0056-192 SS-SP-0057-193 SS-SP-0058-194 SS-SP-0059-195 SS-SP-0060-196 SS-SP-0061-197 SS-SP-0062-198 SS-SP-0063-199 SS-SP-0064-200 SS-SP-0065-201 SS-SP-0066-202 SS-SP-0067-203 SS-SP-0068-204 SS-SP-0069-205 SS-SP-0070-206 SS-SP-0071-207 SS-SP-0072-208 SS-SP-0073-209 SS-SP-0074-210 SS-SP-0075-211 SS-SP-0076-212 SS-SP-0077-213 SS-SP-0078-214 SS-SP-0079-215 SS-SP-0080-216 SS-SP-0081-217 SS-SP-0082-218 SS-SP-0083-219 SS-SP-0084-220 SS-SP-0085-221 SS-SP-0086-222 SS-SP-0087-223 SS-SP-0088-224 SS-SP-0089-225 SS-SP-0090-226 SS-SP-0091-227 SS-SP-0092-228 SS-SP-0093-229 SS-SP-0094-230 SS-SP-0095-231 SS-SP-0096-232 SS-SP-0097-233 SS-SP-0098-234 SS-SP-0099-235 SS-SP-0100-236 SS-SP-0101-237 SS-SP-0102-238 SS-SP-0103-239 SS-SP-0104-240 SS-SP-0105-241 SS-SP-0106-242 SS-SP-0107-243 SS-SP-0108-244 SS-SP-0109-245 SS-SP-0110-246 SS-SP-0111-247 SS-SP-0112-248 SS-SP-0113-249 SS-SP-0114-250 SS-SP-0115-251 SS-SP-0116-252 SS-SP-0117-253 SS-SP-0118-254 SS-SP-0119-255 SS-SP-0120-256 SS-SP-0121-257 SS-SP-0122-258 SS-SP-0123-259 SS-SP-0124-260 SS-SP-0125-261 SS-SP-0126-262 SS-SP-0127-263 SS-SP-0128-264 SS-SP-0129-265 SS-SP-0130-266 SS-SP-0131-267 SS-SP-0132-268 SS-SP-0133-269 SS-SP-0134-270 SS-SP-0135-271 SS-SP-0136-272 SS-SP-0137-273 SS-SP-0138-274 SS-SP-0139-275 SS-SP-0140-276 SS-SP-0141-277 SS-SP-0142-278 SS-SP-0143-279 SS-SP-0144-280 SS-SP-0145-281 SS-SP-0146-282 SS-SP-0147-283 SS-SP-0148-284 SS-SP-0149-285 SS-SP-0150-286 SS-SP-0151-287 SS-SP-0152-288 SS-SP-0153-289 SS-SP-0154-290 SS-SP-0155-291 SS-SP-0156-292 SS-SP-0157-293 SS-SP-0158-294 SS-SP-0159-295 SS-SP-0160-296 SS-SP-0161-297 SS-SP-0162-298 SS-SP-0163-299 SS-SP-0164-300 SS-SP-0165-301 SS-SP-0166-302 SS-SP-0167-303 SS-SP-0168-304 SS-SP-0169-305 SS-SP-0170-306 SS-SP-0171-307 SS-SP-0172-308 SS-SP-0173-309 SS-SP-0174-310 SS-SP-0175-311 SS-SP-0176-312 SS-SP-0177-313 SS-SP-0178-314 SS-SP-0179-315 SS-SP-0180-316 SS-SP-0181-317 SS-SP-0182-318 SS-SP-0183-319 SS-SP-0184-320 SS-SP-0185-321 SS-SP-0186-322 SS-SP-0187-323 SS-SP-0188-324 SS-SP-0189-325 SS-SP-0190-326 SS-SP-0191-327 SS-SP-0192-328 SS-SP-0193-329 SS-SP-0194-330 SS-SP-0195-331 SS-SP-0196-332 SS-SP-0197-333 SS-SP-0198-334 SS-SP-0199-335 SS-SP-0200-336 SS-SP-0201-337 SS-SP-0202-338 SS-SP-0203-339 SS-SP-0204-340 SS-SP-0205-341 SS-SP-0206-342 SS-SP-0207-343 SS-SP-0208-344 SS-SP-0209-345 SS-SP-0210-346 SS-SP-0211-347 SS-SP-0212-348 SS-SP-0213-349 SS-SP-0214-350 SS-SP-0215-351 SS-SP-0216-352 SS-SP-0217-353 SS-SP-0218-354 SS-SP-0219-355 SS-SP-0220-356 SS-SP-0221-357 SS-SP-0222-358 SS-SP-0223-359 SS-SP-0224-360 SS-SP-0225-361 SS-SP-0226-362 SS-SP-0227-363 SS-SP-0228-364 SS-SP-0229-365 SS-SP-0230-366 SS-SP-0231-367 SS-SP-0232-368 SS-SP-0233-369 SS-SP-0234-370 SS-SP-0235-371 SS-SP-0236-372 SS-SP-0237-373 SS-SP-0238-374 SS-SP-0239-375 SS-SP-0240-376 SS-SP-0241-377 SS-SP-0242-378 SS-SP-0243-379 SS-SP-0244-380 SS-SP-0245-381 SS-SP-0246-382 SS-SP-0247-383 SS-SP-0248-384 SS-SP-0249-385 SS-SP-0250-386 SS-SP-0251-387 SS-SP-0252-388 SS-SP-0253-389 SS-SP-0254-390 SS-SP-0255-391 SS-SP-0256-392 SS-SP-0257-393 SS-SP-0258-394 SS-SP-0259-395 SS-SP-0260-396 SS-SP-0261-397 SS-SP-0262-398 SS-SP-0263-399 SS-SP-0264-400 SS-SP-0265-401 SS-SP-0266-402 SS-SP-0267-403 SS-SP-0268-404 SS-SP-0269-405 SS-SP-0270-406 SS-SP-0271-407 SS-SP-0272-408 SS-SP-0273-409 SS-SP-0274-410 SS-SP-0275-411 SS-SP-0276-412 SS-SP-0277-413 SS-SP-0278-414 SS-SP-0279-415 SS-SP-0280-416 SS-SP-0281-417 SS-SP-0282-418 SS-SP-0283-419 SS-SP-0284-420 SS-SP-0285-421 SS-SP-0286-422 SS-SP-0287-423 SS-SP-0288-424 SS-SP-0289-425 SS-SP-0290-426 SS-SP-0291-427 SS-SP-0292-428 SS-SP-0293-429 SS-SP-0294-430 SS-SP-0295-431 SS-SP-0296-432 SS-SP-0297-433 SS-SP-0298-434 SS-SP-0299-435 SS-SP-0300-436 SS-SP-0301-437 SS-SP-0302-438 SS-SP-0303-439 SS-SP-0304-440 SS-SP-0305-441 SS-SP-0306-442 SS-SP-0307-443 SS-SP-0308-444 SS-SP-0309-445 SS-SP-0310-446 SS-SP-0311-447 SS-SP-0312-448 SS-SP-0313-449 SS-SP-0314-450 SS-SP-0315-451 SS-SP-0316-452 SS-SP-0317-453 SS-SP-0318-454 SS-SP-0319-455 SS-SP-0320-456 SS-SP-0321-457 SS-SP-0322-458 SS-SP-0323-459 SS-SP-0324-460 SS-SP-0325-461 SS-SP-0326-462 SS-SP-0327-463 SS-SP-0328-464 SS-SP-0329-465 SS-SP-0330-466 SS-SP-0331-467 SS-SP-0332-468 SS-SP-0333-469 SS-SP-0334-470 SS-SP-0335-471 SS-SP-0336-472 SS-SP-0337-473 SS-SP-0338-474 SS-SP-0339-475 SS-SP-0340-476 SS-SP-0341-477 SS-SP-0342-478 SS-SP-0343-479 SS-SP-0344-480 SS-SP-0345-481 SS-SP-0346-482 SS-SP-0347-483 SS-SP-0348-484 SS-SP-0349-485 SS-SP-0350-486 SS-SP-0351-487 SS-SP-0352-488 SS-SP-0353-489 SS-SP-0354-490 SS-SP-0355-491 SS-SP-0356-492 SS-SP-0357-493 SS-SP-0358-494 SS-SP-0359-495 SS-SP-0360-496 SS-SP-0361-497 SS-SP-0362-498 SS-SP-0363-499 SS-SP-0364-500 SS-SP-0365-501 SS-SP-0366-502 SS-SP-0367-503 SS-SP-0368-504 SS-SP-0369-505 SS-SP-0370-506 SS-SP-0371-507 SS-SP-0372-508 SS-SP-0373-509 SS-SP-0374-510 SS-SP-0375-511 SS-SP-0376-512 SS-SP-0377-513 SS-SP-0378-514 SS-SP-0379-515 SS-SP-0380-516 SS-SP-0381-517 SS-SP-0382-518 SS-SP-0383-519 SS-SP-0384-520 SS-SP-0385-521 SS-SP-0386-522 SS-SP-0387-523 SS-SP-0388-524 SS-SP-0389-525 SS-SP-0390-526 SS-SP-0391-527 SS-SP-0392-528 SS-SP-0393-529 SS-SP-0394-530 SS-SP-0395-531 SS-SP-0396-532 SS-SP-0397-533 SS-SP-0398-534 SS-SP-0399-535 SS-SP-0400-536 SS-SP-0401-537 SS-SP-0402-538 SS-SP-0403-539 SS-SP-0404-540 SS-SP-0405-541 SS-SP-0406-542 SS-SP-0407-543 SS-SP-0408-544 SS-SP-0409-545 SS-SP-0410-546 SS-SP-0411-547 SS-SP-0412-548 SS-SP-0413-549 SS-SP-0414-550 SS-SP-0415-551 SS-SP-0416-552 SS-SP-0417-553 SS-SP-0418-554 SS-SP-0419-555 SS-SP-0420-556 SS-SP-0421-557 SS-SP-0422-558 SS-SP-0423-559 SS-SP-0424-560 SS-SP-0425-561 SS-SP-0426-562 SS-SP-0427-563 SS-SP-0428-564 SS-SP-0429-565 SS-SP-0430-566 SS-SP-0431-567 SS-SP-0432-568 SS-SP-0433-569 SS-SP-0434-570 SS-SP-0435-571 SS-SP-0436-572 SS-SP-0437-573 SS-SP-0438-574 SS-SP-0439-575 SS-SP-0440-576 SS-SP-0441-577 SS-SP-0442-578 SS-SP-0443-579 SS-SP-0444-580 SS-SP-0445-581 SS-SP-0446-582 SS-SP-0447-583 SS-SP-0448-584 SS-SP-0449-585 SS-SP-0450-586 SS-SP-0451-587 SS-SP-0452-588 SS-SP-0453-589 SS-SP-0454-590 SS-SP-0455-591 SS-SP-0456-592 SS-SP-0457-593 SS-SP-0458-594 SS-SP-0459-595 SS-SP-0460-596 SS-SP-0461-597 SS-SP-0462-598 SS-SP-0463-599 SS-SP-0464-600 SS-SP-0465-601 SS-SP-0466-602 SS-SP-0467-603 SS-SP-0468-604 SS-SP-0469-605 SS-SP-0470-606 SS-SP-0471-607 SS-SP-0472-608 SS-SP-0473-609 SS-SP-0474-610 SS-SP-0475-611 SS-SP-0476-612 SS-SP-0477-613 SS-SP-0478-614 SS-SP-0479-615 SS-SP-0480-616 SS-SP-0481-617 SS-SP-0482-618 SS-SP-0483-619 SS-SP-0484-620 SS-SP-0485-621 SS-SP-0486-622 SS-SP-0487-623 SS-SP-0488-624 SS-SP-0489-625 SS-SP-0490-626 SS-SP-0491-627 SS-SP-0492-628 SS-SP-0493-629 SS-SP-0494-630 SS-SP-0495-631 SS-SP-0496-632 SS-SP-0497-633 SS-SP-0498-634 SS-SP-0499-635 SS-SP-0500-636 SS-SP-0501-637 SS-SP-0502-638 SS-SP-0503-639 SS-SP-0504-640 SS-SP-0505-641 SS-SP-0506-642 SS-SP-0507-643 SS-SP-0508-644 SS-SP-0509-645 SS-SP-0510-646 SS-SP-0511-647 SS-SP-0512-648 SS-SP-0513-649 SS-SP-0514-650 SS-SP-0515-651 SS-SP-0516-652 SS-SP-0517-653 SS-SP-0518-654 SS-SP-0519-655 SS-SP-0520-656 SS-SP-0521-657 SS-SP-0522-658 SS-SP-0523-659 SS-SP-0524-660 SS-SP-0525-661 SS-SP-0526-662 SS-SP-0527-663 SS-SP-0528-664 SS-SP-0529-665 SS-SP-0530-666 SS-SP-0531-667 SS-SP-0532-668 SS-SP-0533-669 SS-SP-0534-670 SS-SP-0535-671 SS-SP-0536-672 SS-SP-0537-673 SS-SP-0538-674 SS-SP-0539-675 SS-SP-0540-676 SS-SP-0541-677 SS-SP-0542-678 SS-SP-0543-679 SS-SP-0544-680 SS-SP-0545-681 SS-SP-0546-682 SS-SP-0547-683 SS-SP-0548-684 SS-SP-0549-685 SS-SP-0550-686 SS-SP-0551-687 SS-SP-0552-688 SS-SP-0553-689 SS-SP-0554-690 SS-SP-0555-691 SS-SP-0556-692 SS-SP-0557-693 SS-SP-0558-694 SS-SP-0559-695 SS-SP-0560-696 SS-SP-0561-697 SS-SP-0562-698 SS-SP-0563-699 SS-SP-0564-700 SS-SP-0565-701 SS-SP-0566-702 SS-SP-0567-703 SS-SP-0568-704 SS-SP-0569-705 SS-SP-0570-706 SS-SP-0571-707 SS-SP-0572-708 SS-SP-0573-709 SS-SP-0574-710 SS-SP-0575-711 SS-SP-0576-712 SS-SP-0577-713 SS-SP-0578-714 SS-SP-0579-715 SS-SP-0580-716 SS-SP-0581-717 SS-SP-0582-718 SS-SP-0583-719 SS-SP-0584-720 SS-SP-0585-721 SS-SP-0586-722 SS-SP-0587-723 SS-SP-0588-724 SS-SP-0589-725 SS-SP-0590-726 SS-SP-0591-727 SS-SP-0592-728 SS-SP-0593-729 SS-SP-0594-730 SS-SP-0595-731 SS-SP-0596-732 SS-SP-0597-733 SS-SP-0598-734 SS-SP-0599-735 SS-SP-0600-736 SS-SP-0601-737 SS-SP-0602-738 SS-SP-0603-739 SS-SP-0604-740 SS-SP-0605-741 SS-SP-0606-742 SS-SP-0607-743 SS-SP-0608-744 SS-SP-0609-745 SS-SP-0610-746 SS-SP-0611-747 SS-SP-0612-748 SS-SP-0613-749 SS-SP-0614-750 SS-SP-0615-751 SS-SP-0616-752 SS-SP-0617-753 SS-SP-0618-754 SS-SP-0619-755 SS-SP-0620-756 SS-SP-0621-757 SS-SP-0622-758 SS-SP-0623-759 SS-SP-0624-760 SS-SP-0625-761 SS-SP-0626-762 SS-SP-0627-763 SS-SP-0628-764 SS-SP-0629-765 SS-SP-0630-766 SS-SP-0631-767 SS-SP-0632-768 SS-SP-0633-769 SS-SP-0634-770 SS-SP-0635-771 SS-SP-0636-772 SS-SP-0637-773 SS-SP-0638-774 SS-SP-0639-775 SS-SP-0640-776 SS-SP-0641-777 SS-SP-0642-778 SS-SP-0643-779 SS-SP-0644-780 SS-SP-0645-781 SS-SP-0646-782 SS-SP-0647-783 SS-SP-0648-784 SS-SP-0649-785 SS-SP-0650-786 SS-SP-0651-787 SS-SP-0652-788 SS-SP-0653-789 SS-SP-0654-790 SS-SP-0655-791 SS-SP-0656-792 SS-SP-0657-793 SS-SP-0658-794 SS-SP-0659-795 SS-SP-0660-796 SS-SP-0661-797 SS-SP-0662-798 SS-SP-0663-799 SS-SP-0664-800 SS-SP-0665-801 SS-SP-0666-802 SS-SP-0667-803 SS-SP-0668-804 SS-SP-0669-805 SS-SP-0670-806 SS-SP-0671-807 SS-SP-0672-808 SS-SP-0673-809 SS-SP-0674-810 SS-SP-0675-811 SS-SP-0676-812 SS-SP-0677-813 SS-SP-0678-814 SS-SP-0679-815 SS-SP-0680-816 SS-SP-0681-817 SS-SP-0682-818 SS-SP-0683-819 SS-SP-0684-820 SS-SP-0685-821 SS-SP-0686-822 SS-SP-0687-823 SS-SP-0688-824 SS-SP-0689-825 SS-SP-0690-826 SS-SP-0691-827 SS-SP-0692-828 SS-SP-0693-829 SS-SP-0694-830 SS-SP-0695-831 SS-SP-0696-832 SS-SP-0697-833 SS-SP-0698-834 SS-SP-0699-835 SS-SP-0700-836 SS-SP-0701-837 SS-SP-0702-838 SS-SP-0703-839 SS-SP-0704-840 SS-SP-0705-841 SS-SP-0706-842 SS-SP-0707-843 SS-SP-0708-844 SS-SP-0709-845 SS-SP-0710-846 SS-SP-0711-847 SS-SP-0712-848 SS-SP-0713-849 SS-SP-0714-850 SS-SP-0715-851 SS-SP-0716-852 SS-SP-0717-853 SS-SP-0718-854 SS-SP-0719-855 SS-SP-0720-856 SS-SP-0721-857 SS-SP-0722-858 SS-SP-0723-859 SS-SP-0724-860 SS-SP-0725-861 SS-SP-0726-862 SS-SP-0727-863 SS-SP-0728-864 SS-SP-0729-865 SS-SP-0730-866 SS-SP-0731-867 SS-SP-0732-868 SS-SP-0733-869 SS-SP-0734-870 SS-SP-0735-871 SS-SP-0736-872 SS-SP-0737-873 SS-SP-0738-874 SS-SP-0739-875 SS-SP-0740-876 SS-SP-0741-877 SS-SP-0742-878 SS-SP-0743-879 SS-SP-0744-880 SS-SP-0745-881 SS-SP-0746-882 SS-SP-0747-883 SS-SP-0748-884 SS-SP-0749-885 SS-SP-0750-886 SS-SP-0751-887 SS-SP-0752-888 SS-SP-0753-889 SS-SP-0754-890 SS-SP-0755-891 SS-SP-0756-892 SS-SP-0757-893 SS-SP-0758-894 SS-SP-0759-895 SS-SP-0760-896 SS-SP-0761-897 SS-SP-0762-898 SS-SP-0763-899 SS-SP-0764-900 SS-SP-0765-901 SS-SP-0766-902 SS-SP-0767-903 SS-SP-0768-904 SS-SP-0769-905 SS-SP-0770-906 SS-SP-0771-907 SS-SP-0772-908 SS-SP-0773-909 SS-SP-0774-910 SS-SP-0775-911 SS-SP-0776-912 SS-SP-0777-913 SS-SP-0778-914 SS-SP-0779-915 SS-SP-0780-916 SS-SP-0781-917 SS-SP-0782-918 SS-SP-0783-919 SS-SP-0784-920 SS-SP-0785-921 SS-SP-0786-922 SS-SP-0787-923 SS-SP-0788-924 SS-SP-0789-925 SS-SP-0790-926 SS-SP-0791-927 SS-SP-0792-928 SS-SP-0793-929 SS-SP-0794-930 SS-SP-0795-931 SS-SP-0796-932 SS-SP-0797-933 SS-SP-0798-934 SS-SP-0799-935 SS-SP-0800-936 SS-SP-0801-937 SS-SP-0802-938 SS-SP-0803-939 SS-SP-0804-940 SS-SP-0805-941 SS-SP-0806-942 SS-SP-0807-943 SS-SP-0808-944 SS-SP-0809-945 SS-SP-0810-946 SS-SP-0811-947 SS-SP-0812-948 SS-SP-0813-949 SS-SP-0814-950 SS-SP-0815-951 SS-SP-0816-952 SS-SP-0817-953 SS-SP-0818-954 SS-SP-0819-955 SS-SP-0820-956 SS-SP-0821-957 SS-SP-0822-958 SS-SP-0823-959 SS-SP-0824-960 SS-SP-0825-961 SS-SP-0826-962 SS-SP-0827-963 SS-SP-0828-964 SS-SP-0829-965 SS-SP-0830-966 SS-SP-0831-967 SS-SP-0832-968 SS-SP-0833-969 SS-SP-0834-970 SS-SP-0835-971 SS-SP-0836-972 SS-SP-0837-973 SS-SP-0838-974 SS-SP-0839-975 SS-SP-0840-976 SS-SP-0841-977 SS-SP-0																		



BTH INFRACO NOTIFICATION OF CHANGE (NOC)

Table with columns: Ref, Ref, Ref, Date Modified, Description, State of Matter Dates, Letter Ref, Approved in Principle?, Change Type, Start, End, Daily Estimate (m2/min), Picking Method, Values (Estimate/Actual), Action Required, Action By, Date. Rows include various infrastructure projects like 'FC Erving changes Copalton', 'FC Erving changes Edinburgh Park Bridge', 'FC Erving changes Edinburgh Park Bridge', etc.



BEN INFRACO NOTIFICATION of a CHANGE (INTC)

ID	Rev	Iss Change Order TO	Description	Date Notified	State of Engineer letters	Letter Ref	Approved in Principle?	Change Type	Daily Estimate (000's)		Value Estimate (000's)								Sections	Agreed Cost	Action By	Date				
									Start	Finish	Agreed	000	000	000	000	000	000	000					000	000	000	000
												1,136,866	15,873,827	5,827,744	27,839,434	596,834	1,374,298	24,795,217	266,529	24,527,797		274,189				

Notes

- 1 - Type
- 2 - Change Type
- 3 - Allocation of Cost
- 4 - Hooop
- 5 - Conversion Partner and Site Section
- 6 - Notified Disposition Defined in Change
- 7 - National Disposition Mandatory in Change
- 8 - In Exception
- 9 - No Change
- 10 - Station Change
- 11 - Signalling Change
- 12 - Accommodation Works Change
- 13 - Operating Change in Law
- 14 - Conversion Partner and Site Section
- 15 - Labour A/Lim(8) Tax Fluctuations
- 16 - Schedule of Rates
- 17 - Unrated Rates
- 18 - Unrated Public Rates
- 19 - Cost
- 20 - or any combination

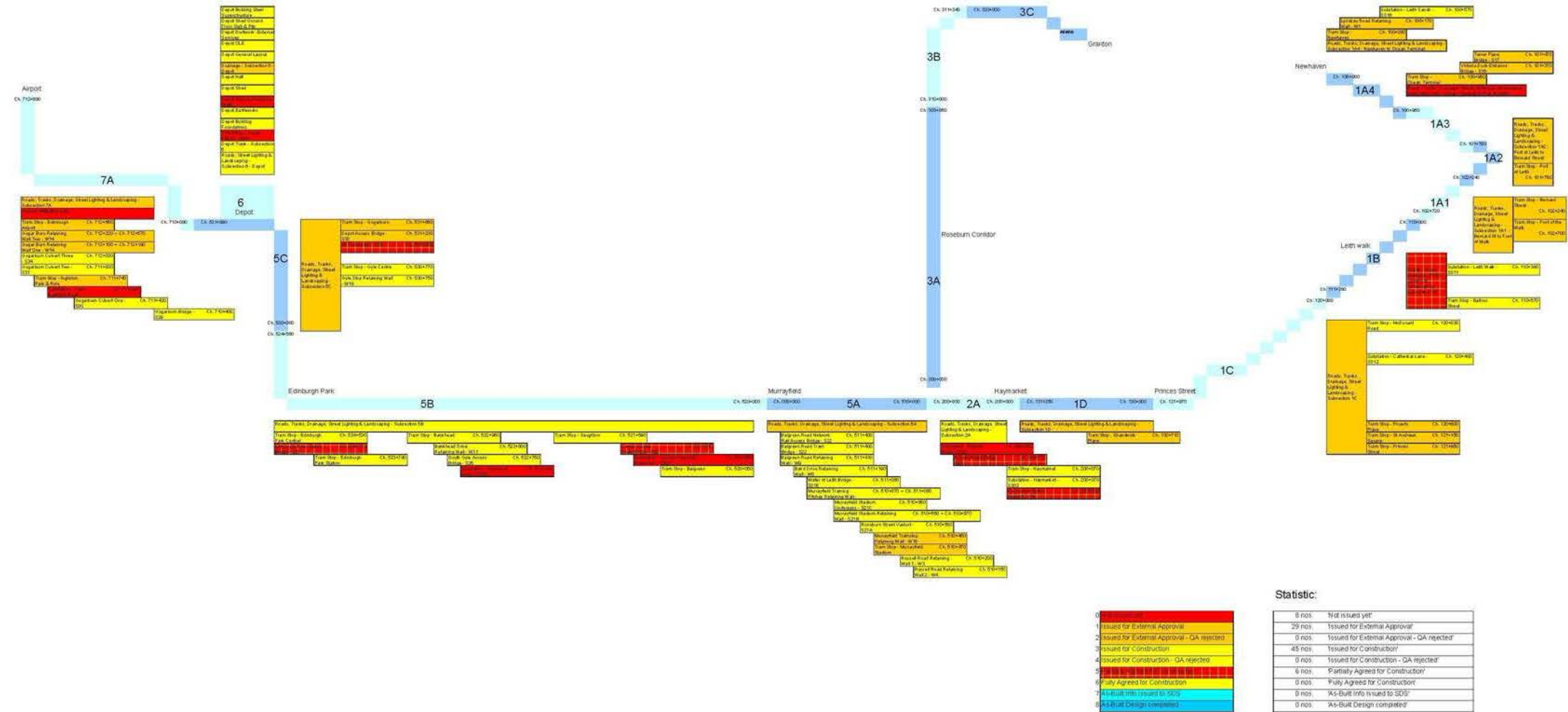
10.8 Organisation Charts

10.9 Production of Design

Design Package Tracker

13/10/2008

System Wide: Budget Migration Plan



Statistic:

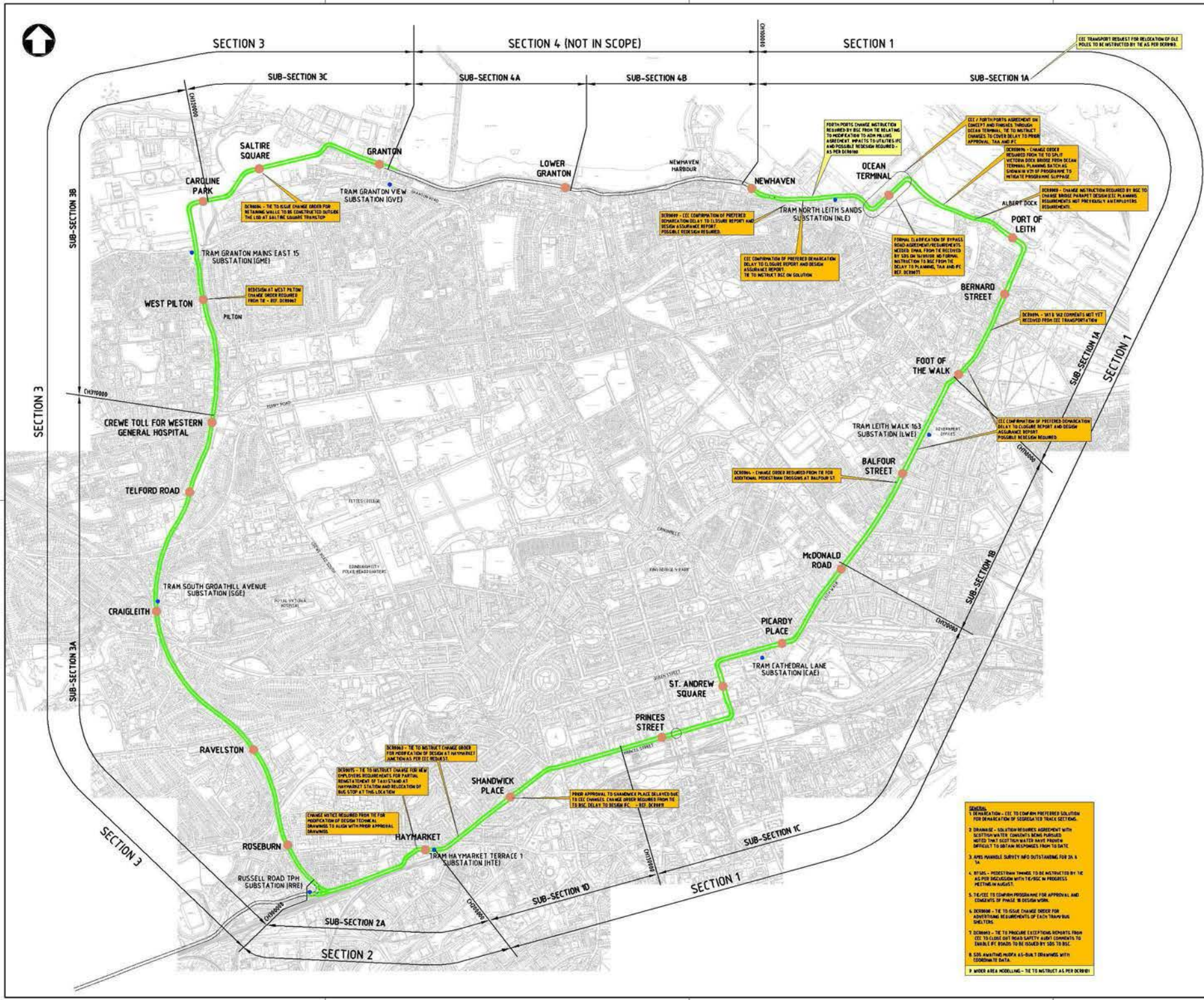
0 nos	Not issued yet
29 nos	Issued for External Approval
0 nos	Issued for External Approval - QA rejected
45 nos	Issued for Construction
0 nos	Issued for Construction - QA rejected
6 nos	Partially Agreed for Construction
0 nos	Fully Agreed for Construction
7 nos	As-Built info issued to SDS
0 nos	As-Built Info issued to SDS
0 nos	As-Built Design completed
88 nos	Total

CEC01169379_0138

10.10 Issues and Concerns



CEC01169379_0140



NOTES
1. DWS HUMMINGBIRD REF: 08229
PDF HUMMINGBIRD REF: 08229

KEY

- DENOTES OUTSTANDING ISSUE
- DENOTES OUTSTANDING ISSUE - 4 WEEKS OLD FROM 01/10/08
- DENOTES OUTSTANDING ISSUE - 4 WEEKS PLUS FROM 01/10/08

REV	DESCRIPTION OF REVISION	ENR	CHKD	APP	DATE
3	ISSUED FOR INFORMATION	JS	KT	BC	23/10/04
2	ISSUED FOR INFORMATION	BAF	SN	BC	03/10/01
1	ISSUED FOR INFORMATION	JS	SN	BC	26/08/00

For Information Only

EDINBURGH TRAM NETWORK

PARSONS BRINCKERHOFF

**SYSTEM WIDE
LINE 1
POST - NOVATION
PROJECT ISSUES**

DESIGNED BY: STACHOWIAK J. CHECKED BY: MEY
 APPROVED BY: Chandraraj J. DRAWING CODE: A1
 DATE: 29/09/2008 SCALE: 1:10000
 DRAWING NUMBER: ULE90130-SW-DRG-00651 REV: 3

- ISSUES**
1. DEMARCATION - CEC TO COMPHAN PREFERRED SOLUTION FOR RELOCATION OF SIGNAGE TO TRACK SECTION.
 2. SIGNAGE - SIGNATION REQUIRED AGREEMENT WITH SCOTLAND WATER. CONSULTANTS BEING PARSED WITH THE SIGNATION WATER PLANT. PROBLEMS DIFFICULT TO OBTAIN RESPONSES FROM TO DATE.
 3. APNS HANDLE SUPPLY INFO OUTSTANDING FOR 2A & 1A.
 4. WPLD - PROCEEDING THAMES TO BE INSTRUCTED BY THE AS FOR RELOCATION WITH TIE/IC IN PROGRESS. MEETING IN AUGUST.
 5. TIE/CEC TO COMPHAN PROGRAMME FOR APPROVAL AND CONSENTS OF PUBLIC RE DESIGN WORK.
 6. DENHAM - TIE TO ISSUE CHANGE ORDER FOR ADJUSTMENTS REQUIREMENTS OF EACH TRAMBUS ONE TIME.
 7. DENHAM - TIE TO PRODUCE EXCEPTIONAL REPORTS FROM CEC TO CLARIFY GET ROAD SAFETY ALERT COMMENTS TO ENABLE PE DESIGN TO BE ISSUED BY 30S TO BSC.
 8. 300 MAPPING MAPS A5-SUN 1 DRAWINGS WITH GEOMETRIC DATA.
 9. WIDE AREA MODELLING - TIE TO INSTRUCT AS PER 08/08/01

NOTES

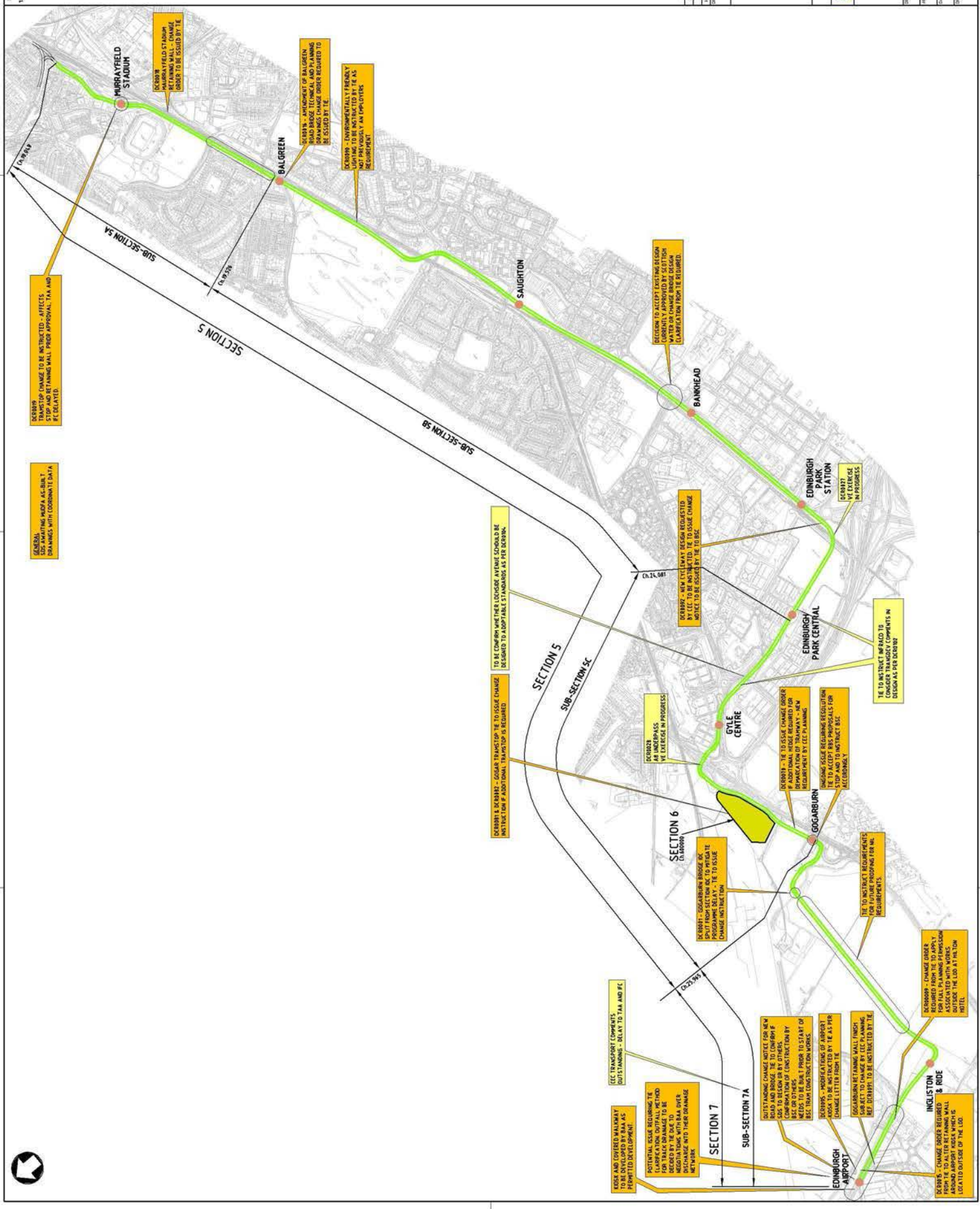
1. DWS HAMPSHIRE REF- BR24.1
 2. DWS HAMPSHIRE REF- BR24.2

KEY

DE NOTES OUTSTANDING ISSUE

DE NOTES OUTSTANDING ISSUE - 4 WEEKS
 OLD FROM 30/10/18

DE NOTES OUTSTANDING ISSUE - 4 WEEKS
 PLUS FROM 30/10/18



1. DWS HAMPSHIRE REF- BR24.1
 2. DWS HAMPSHIRE REF- BR24.2

For Information Only

NO.	ISSUE	DATE	STATUS
1.	ISSUED FOR INFORMATION	15	RES. AM.
2.	ISSUED FOR INFORMATION	15	RES. AM.
3.	ISSUED FOR INFORMATION	15	RES. AM.
4.	ISSUED FOR INFORMATION	15	RES. AM.
5.	ISSUED FOR INFORMATION	15	RES. AM.
6.	ISSUED FOR INFORMATION	15	RES. AM.
7.	ISSUED FOR INFORMATION	15	RES. AM.
8.	ISSUED FOR INFORMATION	15	RES. AM.
9.	ISSUED FOR INFORMATION	15	RES. AM.
10.	ISSUED FOR INFORMATION	15	RES. AM.

tie

EDINBURGH TRAM NETWORK

107 YARROW
 107 YARROW
 107 YARROW

**SYSTEM WIDE
 POST - INNOVATION
 PROJECT ISSUES**

CREATED BY: SPURDALK
 APPROVED: CHARLES
 DATE: 29/11/2018
 DRAWING NUMBER: ULE90130-SW-DRG-00652
 REV: 3