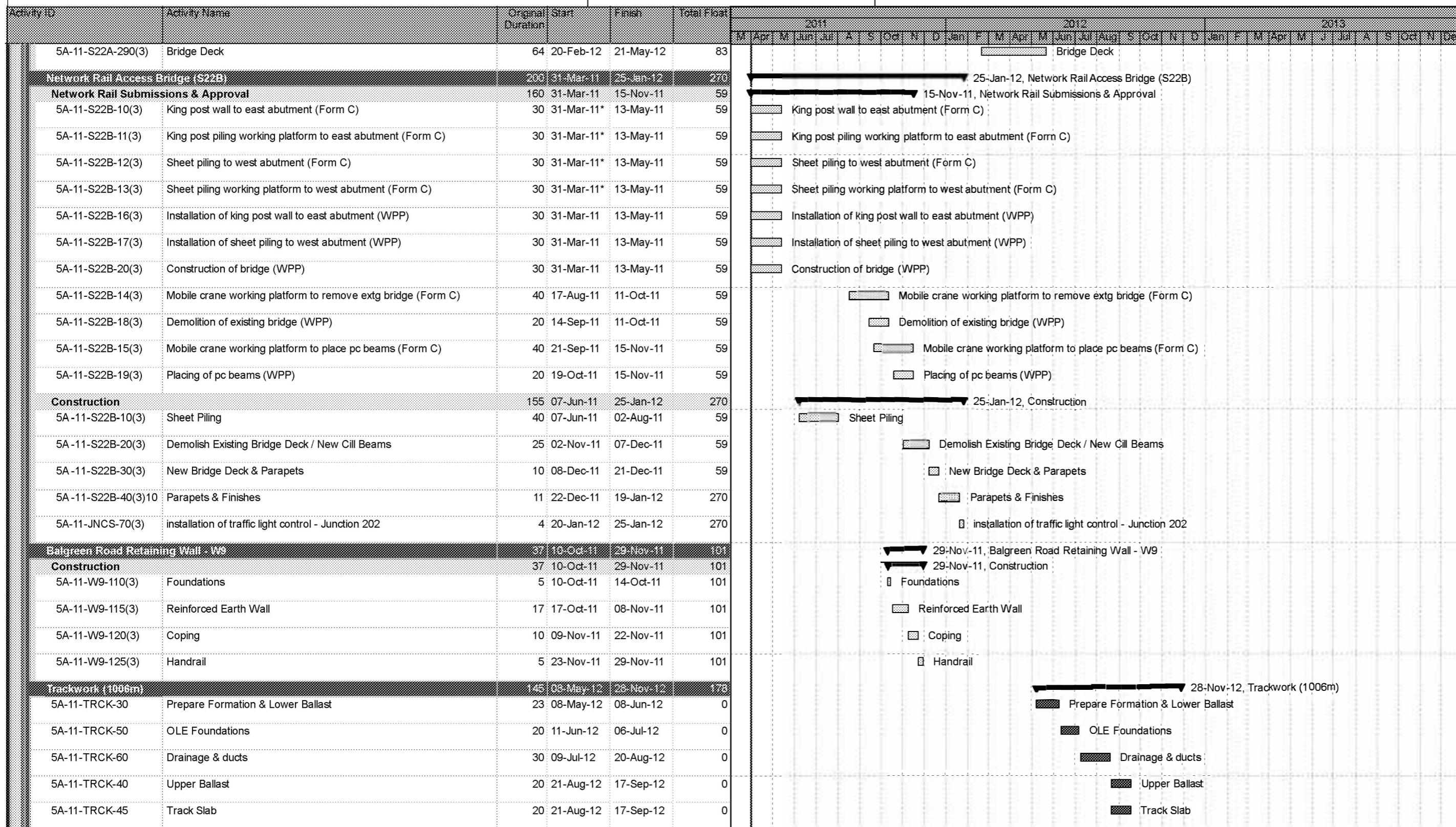
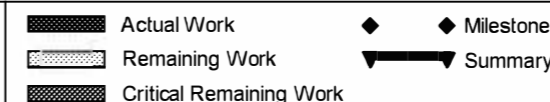


Date	Revision	Checked	Approved
02-Feb-11	Revision 0	SCS/MHE	BSC
16-Feb-11	Revision 1	SCS/MHE	BSC
18-Feb-11	Revision 2	SCS/MHE	BSC



Date	Revision	Checked	Approved
02-Feb-11	Revision 0	SCS/MHE	BSC
16-Feb-11	Revision 1	SCS/MHE	BSC
18-Feb-11	Revision 2	SCS/MHE	BSC



Activity ID	Activity Name	Original Duration	Start	Finish	Total Float	2011												2012												2013											
						M	Apr	M	Jun	Jul	A	S	Oct	N	D	Jan	F	M	Apr	M	Jun	Jul	Aug	S	Oct	N	D	Jan	F	M	Apr	M	Jun	Jul	A	S	Oct	N	Dec		
MUDFA & Utilities Completions						31-Mar-11, MUDFA & Utilities Completions																																			
5B-09-UTL-10(3)	Saughton Road North to Bankhead (South Gyle Access Sewer Diversion)	0	31-Mar-11	31-Mar-11*	135	Saughton Road North to Bankhead (South Gyle Access Sewer Diversion)																																			
E&M Installations						19-Nov-12, E & M Installations																																			
5B-10-ELEC-30	Access for visual inspection to cable pits for cable laying BAL - SGT	0	14-Feb-12		439	Access for visual inspection to cable pits for cable laying BAL - SGT																																			
5B-10-OHLE-30	Access for visual inspection for E&M wayside installation BAL - SGT	0	14-Feb-12		439	Access for visual inspection for E&M wayside installation BAL - SGT																																			
5B-10-ELEC-31	Access to cable pits for cable laying BAL - SGT	0	14-Mar-12		280	Access to cable pits for cable laying BAL - SGT																																			
5B-10-OHLE-31	Access for E&M wayside installation BAL - SGT	0	14-Mar-12		224	Access for E&M wayside installation BAL - SGT																																			
5B-09-ELEC-30	Access for visual inspection to cable pits for cable laying SGT - BNK	0	30-Apr-12		330	Access for visual inspection to cable pits for cable laying SGT - BNK																																			
5B-09-OHLE-30	Access for visual inspection for E&M wayside installation SGT - BNK	0	30-Apr-12		330	Access for visual inspection for E&M wayside installation SGT - BNK																																			
5B-09-SGNW-60	Install Signalling Wayside Equipment SGT - BNK	10	31-May-12	14-Jun-12	162	Install Signalling Wayside Equipment SGT - BNK																																			
5B-09-ELEC-31	Access to cable pits for cable laying SGT - BNK	0	31-May-12		162	Access to cable pits for cable laying SGT - BNK																																			
5B-09-OHLE-31	Access for E&M wayside installation SGT - BNK	0	31-May-12		151	Access for E&M wayside installation SGT - BNK																																			
5B-09-ELEC-60	Install Electrical Cables SGT - BNK	10	31-May-12	14-Jun-12	162	Install Electrical Cables SGT - BNK																																			
5B-08-OHLE-30	Access for visual inspection for E&M wayside installation BNK - EPS	0	14-Jun-12		434	Access for visual inspection for E&M wayside installation BNK - EPS																																			
5B-08-ELEC-30	Access for visual inspection to cable pits for cable laying BNK - EPS	0	14-Jun-12		434	Access for visual inspection to cable pits for cable laying BNK - EPS																																			
5B-10-SGNW-60	Install Signalling Wayside Equipment BAL - SGT	13	14-Jun-12	03-Jul-12	162	Install Signalling Wayside Equipment BAL - SGT																																			
5B-10-ELEC-60	Install Electrical Cables BAL - SGT	13	14-Jun-12	03-Jul-12	162	Install Electrical Cables BAL - SGT																																			
5B-09/10-OHLE-50	Installation of poles and building fixings -14 (52 0535 - 52 2032)	10	09-Jul-12	20-Jul-12	257	Installation of poles and building fixings -14 (52 0535 - 52 2032)																																			
5B-08-SIGN-40	Installation of SIG-interlocking cubicle EPS	15	13-Jul-12	03-Aug-12	268	Installation of SIG-interlocking cubicle EPS																																			
5B-08-ELEC-31	Access to cable pits for cable laying BNK - EPS	0	13-Jul-12		267	Access to cable pits for cable laying BNK - EPS																																			
5B-08/09-TELC-60	Install Fibre Optic Cables SGT - BNK - EPS	9	13-Jul-12	26-Jul-12	164	Install Fibre Optic Cables SGT - BNK - EPS																																			
5B-08-OHLE-31	Access for E&M wayside installation BNK - EPS	0	13-Jul-12		254	Access for E&M wayside installation BNK - EPS																																			
5B-08-ELEC-60	Install Electrical Cables BNK - EPS	8	13-Jul-12	25-Jul-12	280	Install Electrical Cables BNK - EPS																																			
5B-09/10-TELC-60	Install Fibre Optic Cables BAL - SGT - BNK	12	26-Jul-12	14-Aug-12	164	Install Fibre Optic Cables BAL - SGT - BNK																																			
5B-08-SIGN-90	installation of SIG equipment on crossover EPS	5	27-Jul-12	03-Aug-12	268	installation of SIG equipment on crossover EPS																																			
5B-09/10-OHLE-60	Overhead Catenary Line -14 (52 0535 - 52 2032)	26	30-Jul-12	05-Sep-12	186	Overhead Catenary Line -14 (52 0535 - 52 2032)																																			
5B-08-SIGN-80	Commissioning of SIG-interlocking cubicle EPS	5	03-Aug-12	13-Aug-12	268	Commissioning of SIG-interlocking cubicle EPS																																			
5B-08/09-OHLE-50	Installation of poles and building fixings -15 (52 1827 - 52 3273)	10	08-Aug-12	21-Aug-12	151	Installation of poles and building fixings -15 (52 1827 - 52 3273)																																			
5B-07-OHLE-30	Access for visual inspection for E&M wayside installation EPS - EDP	0	13-Aug-12		472	Access for visual inspection for E&M wayside installation EPS - EDP																																			
5B-07-ELEC-30	Access for visual inspection to cable pits for cable laying EPS - EDP	0	13-Aug-12		472	Access for visual inspection to cable pits for cable laying EPS - EDP																																			
5B-08/09-OHLE-60	Overhead Catenary Line -15 (52 1827 - 52 3273)	24	22-Aug-12	24-Sep-12	151	Overhead Catenary Line -15 (52 1827 - 52 3273)																																			

Date	Revision	Checked	Approved
02-Feb-11	Revision 0	SCS/MHE	BSC
16-Feb-11	Revision 1	SCS/MHE	BSC
18-Feb-11	Revision 2	SCS/MHE	BSC

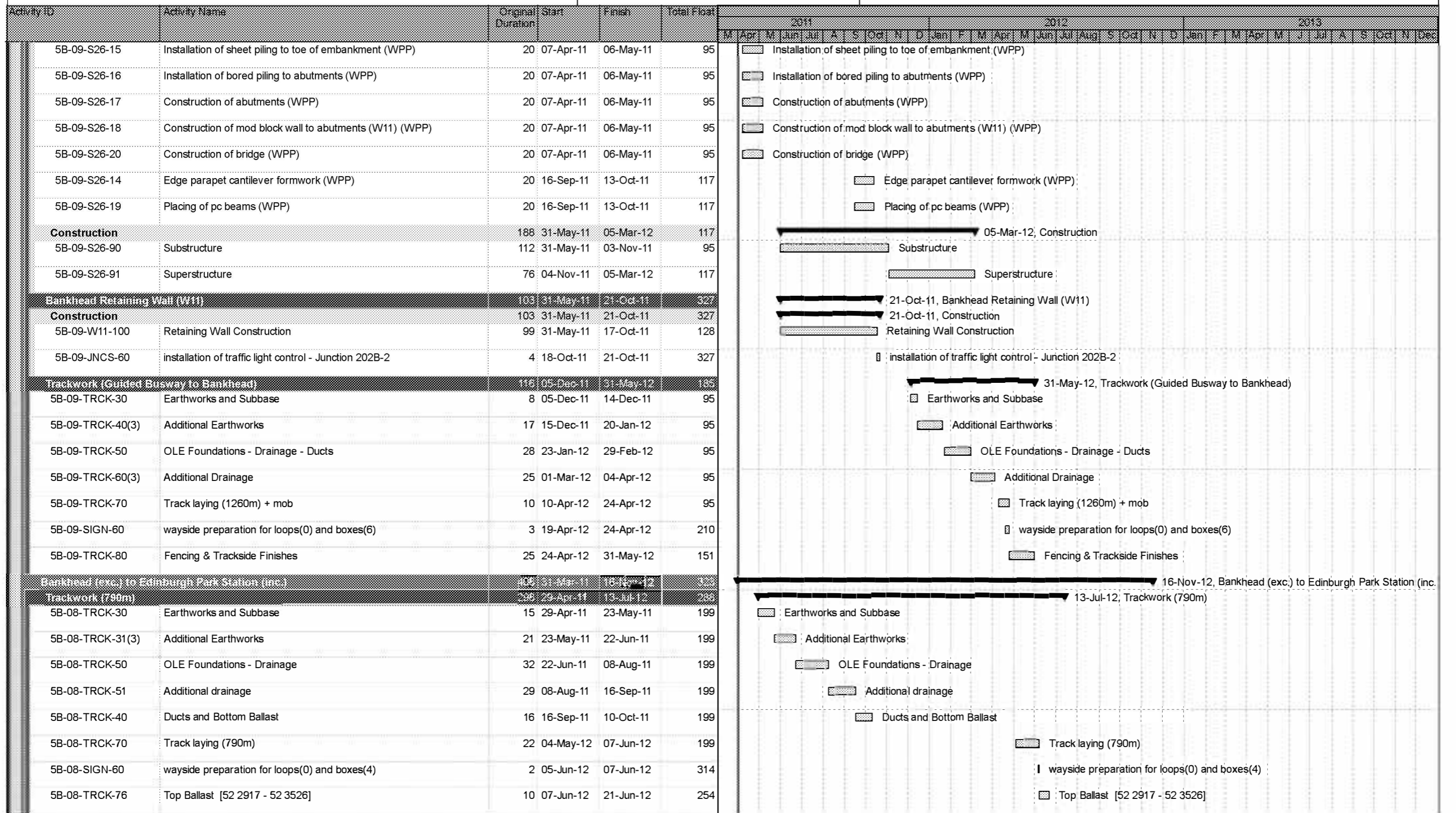
Actual Work
 Remaining Work
 Critical Remaining Work
 Milestone
 Summary

Activity ID	Activity Name	Original Duration	Start	Finish	Total Float	2011												2012												2013																								
						M				A				M				M				J				J				A				S				O				N				D								
						Apr	May	Jun	Jul	Aug	Sep	Oct	Nov	Dec	Jan	Feb	Mar	Apr	May	Jun	Jul	Aug	Sep	Oct	Nov	Dec	Jan	Feb	Mar	Apr	May	Jun	Jul	Aug	Sep	Oct	Nov	Dec	Jan	Feb	Mar													
5B-09-SUBS-110	wayleave granted (substation area)	0		31-Mar-11	306	◆	wayleave granted (substation area)																																															
5B-09-SUBS-120	meter issue for power supply clarified	0		31-Mar-11	321	◆	meter issue for power supply clarified																																															
5B-09-SUBS-90	Civil Engineering and Building Works	35	29-Apr-11*	21-Jun-11	297	□	Civil Engineering and Building Works																																															
5B-09-SUBS-30	Access for visual inspection for E&M Substation installation (05B Bankhead Drive)	0	20-May-11		297	◆	Access for visual inspection for E&M Substation installation (05B Bankhead Drive)																																															
5B-09-SUBS-100	cable duct for Power Infeed	5	20-May-11	27-May-11	297	□	cable duct for Power Infeed																																															
5B-09-SUBS-130	installation HV cable	25	27-May-11	04-Jul-11	297	□	installation HV cable																																															
5B-09-SUBS-31	Access for E&M Substation installation (05B Bankhead Drive)	0	21-Jun-11		297	◆	Access for E&M Substation installation (05B Bankhead Drive)																																															
5B-09-SUBS-40	Power Infeed from Public Net available inc HV cable	0	04-Jul-11		297	◆	Power Infeed from Public Net available inc HV cable																																															
5B-09-SUBS-45	Install HV Power Supply and Equipment (SP)	15	04-Jul-11	25-Jul-11	297	□	Install HV Power Supply and Equipment (SP)																																															
5B-09-SUBS-50	Install LV Power Supply and LV Power Equipment	15	25-Jul-11	16-Aug-11	317	□	Install LV Power Supply and LV Power Equipment																																															
5B-09-SUBS-55	Energisation Scottish Power	0	09-Aug-11		505	◆	Energisation Scottish Power																																															
5B-09-SUBS-70	Install Telecom and Scada	15	16-Aug-11	06-Sep-11	317	□	Install Telecom and Scada																																															
5B-09-SUBS-60	Installation of TPS Equipment	30	06-Sep-11	18-Oct-11	317	□	Installation of TPS Equipment																																															
5B-09-SUBS-80	Testing and Commissioning	14	18-Oct-11	07-Nov-11	317	□	Testing and Commissioning																																															
Bankhead Tram Stop		373	31-Mar-11	05-Oct-12	249																																																	
5B-09-TRMS-20	wayleave issued	0	31-Mar-11		365	◆	wayleave issued																																															
5B-09-TRMS-90	Civil Engineering and Building Works	65	24-Apr-12	26-Jul-12	95	□	Civil Engineering and Building Works																																															
5B-09-TRMS-30	Access for visual inspection for E&M Tram Stop installation (05B South Gyle)	0	06-Jun-12		305	◆	Access for visual inspection for E&M Tram Stop installation (05B South Gyle)																																															
5B-09-TRMS-40	Deliver and Install Shelter	10	21-Jun-12	05-Jul-12	95	□	Deliver and Install Shelter																																															
5B-09-TRMS-31	Access for E&M Tram Stop installation (05B South Gyle)	0	05-Jul-12		105	◆	Access for E&M Tram Stop installation (05B South Gyle)																																															
5B-09-TRMS-45	Deliver and Install cubicle	10	05-Jul-12	19-Jul-12	95	□	Deliver and Install cubicle																																															
5B-09-TRMS-50	Install LV Power Supply and LV Power Equipment	25	19-Jul-12	24-Aug-12	95	□	Install LV Power Supply and LV Power Equipment																																															
5B-09-TRMS-70	Install Telecom Equipment	20	24-Aug-12	21-Sep-12	100	□	Install Telecom Equipment																																															
5B-09-TRMS-60	Install Station Control Equipment + AFC Equipment	25	24-Aug-12	28-Sep-12	95	□	Install Station Control Equipment + AFC Equipment																																															
5B-09-TRMS-80	Package Test Tramstop	5	28-Sep-12	05-Oct-12	95	□	Package Test Tramstop																																															
South Gyle Access Bridge (S26)		223	31-Mar-11	05-Mar-12	117																																																	
Network Rail Submissions & Approval		137	31-Mar-11	13-Oct-11	117																																																	
5B-09-S26-11	Sheet piling working platform to toe of embankment (Form C)	25	31-Mar-11	06-May-11	95	□	Sheet piling working platform to toe of embankment (Form C)																																															
5B-09-S26-12	Bored piling working platform to abutments (Form C)	25	31-Mar-11	06-May-11	95	□	Bored piling working platform to abutments (Form C)																																															
5B-09-S26-13	Mobile crane working platform to place pc beams (Form C)	25	31-Mar-11	06-May-11	95	□	Mobile crane working platform to place pc beams (Form C)																																															
5B-09-S26-10	Sheet piling along toe of embankment (WPP)	20	07-Apr-11	06-May-11	95	□	Sheet piling along toe of embankment (WPP)																																															

Date	Revision	Checked	Approved
02-Feb-11	Revision 0	SCS/MHE	BSC
16-Feb-11	Revision 1	SCS/MHE	BSC
18-Feb-11	Revision 2	SCS/MHE	BSC

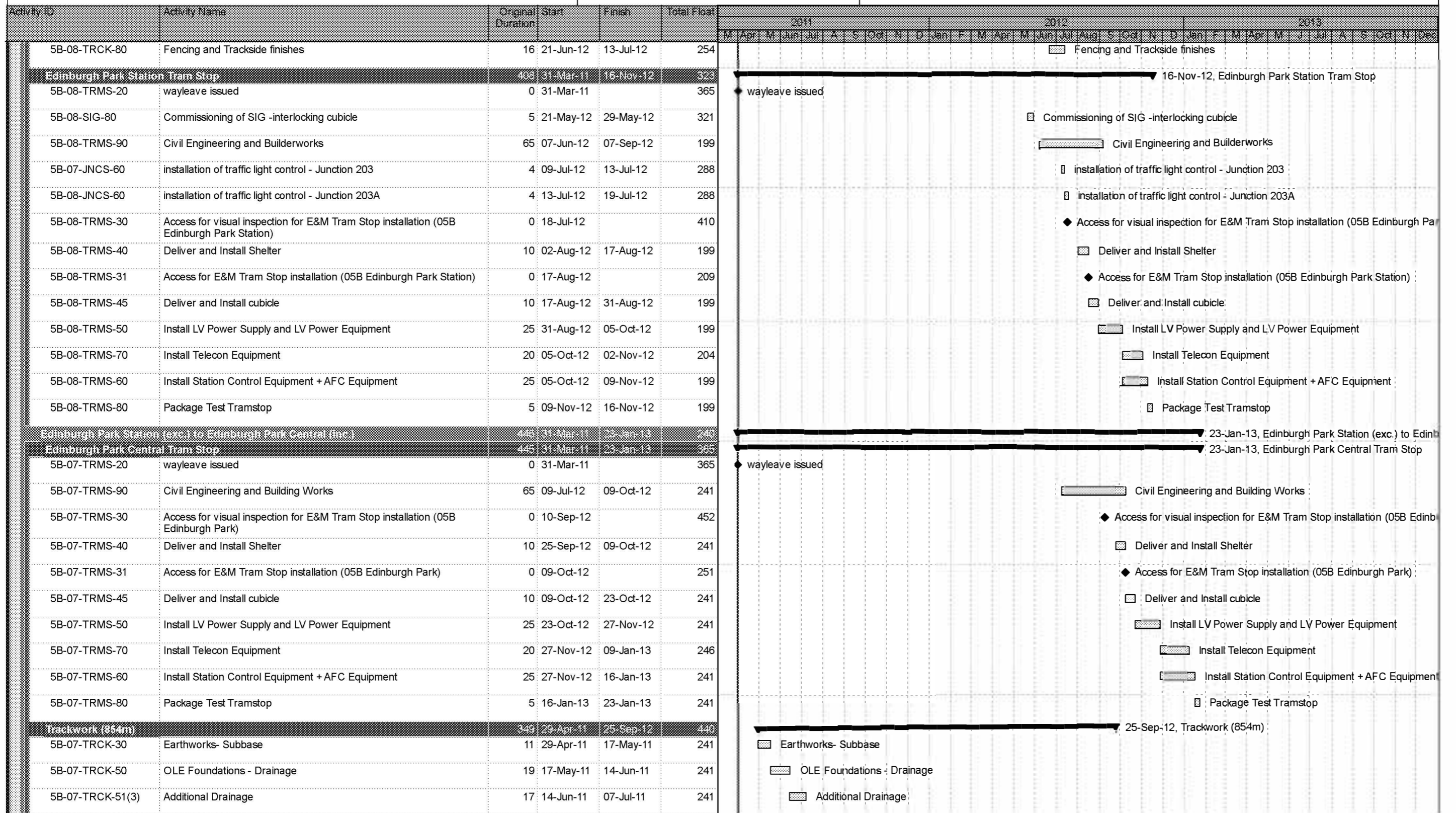
Page 25 of 38

	Actual Work		Milestone
	Remaining Work		Summary
	Critical Remaining Work		



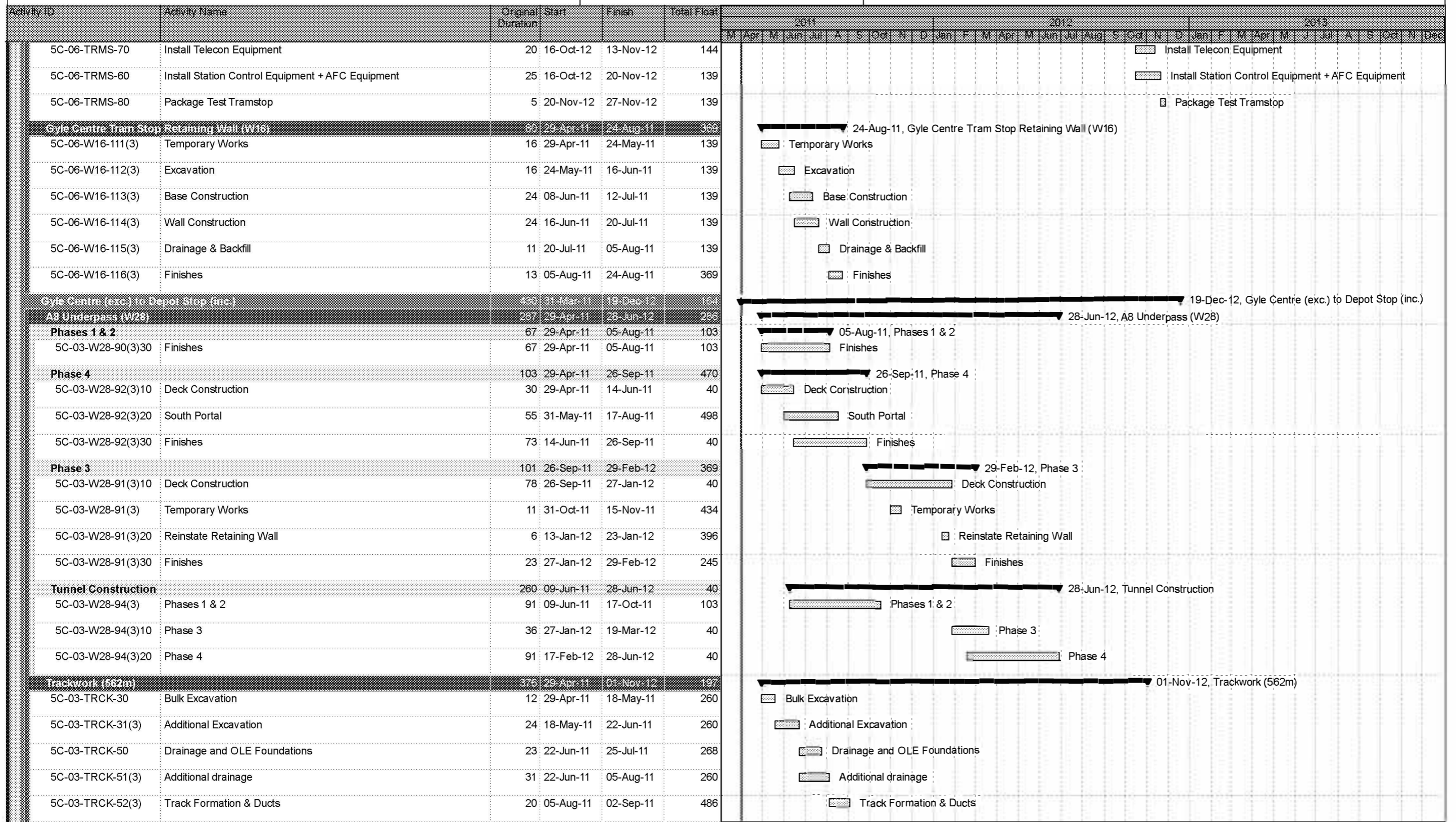
Date	Revision	Checked	Approved
02-Feb-11	Revision 0	SCS/MHE	BSC
16-Feb-11	Revision 1	SCS/MHE	BSC
18-Feb-11	Revision 2	SCS/MHE	BSC

Actual Work
 Remaining Work
 Critical Remaining Work
 Milestone
 Summary



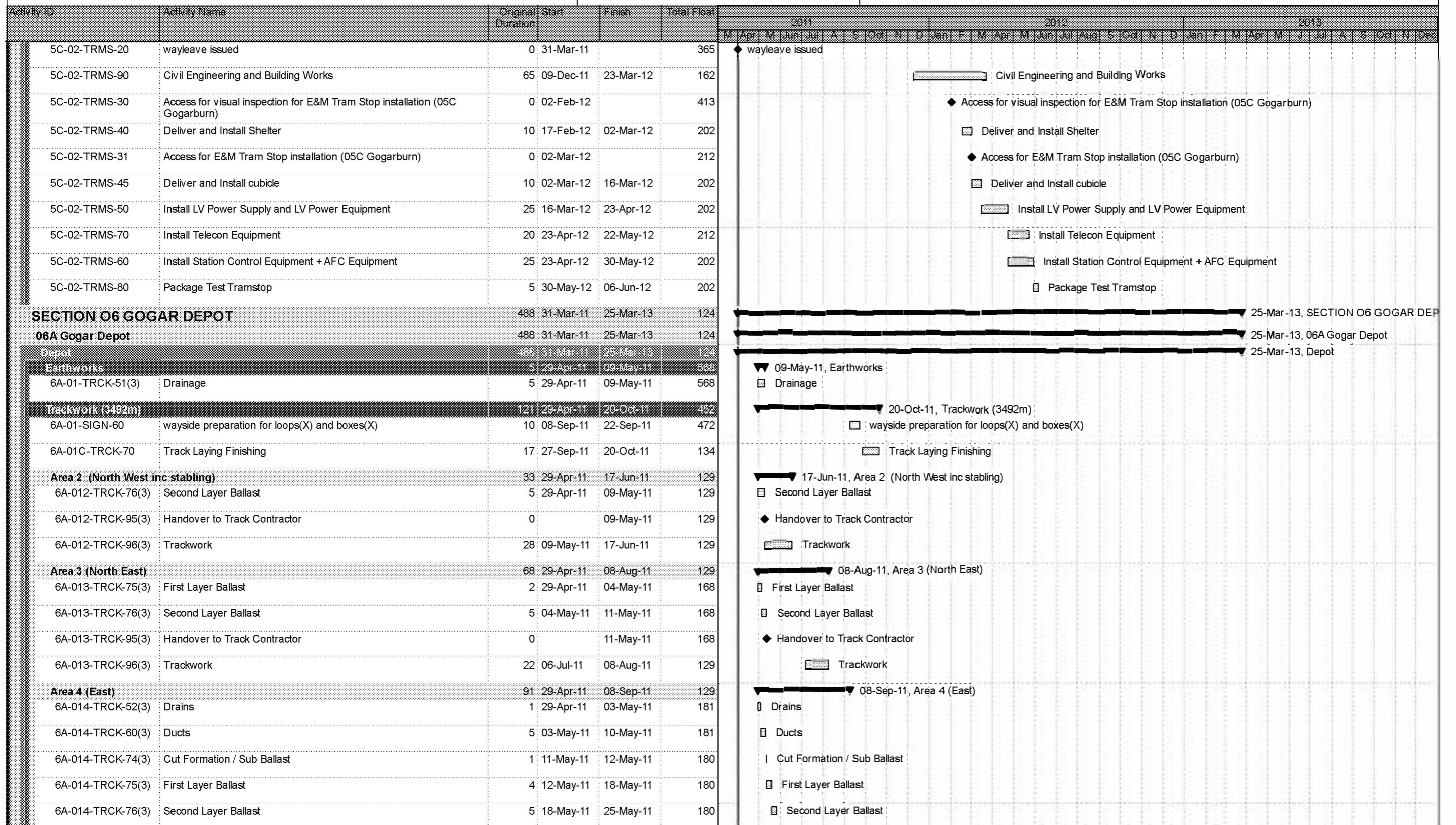
Date	Revision	Checked	Approved
02-Feb-11	Revision 0	SCS/MHE	BSC
16-Feb-11	Revision 1	SCS/MHE	BSC
18-Feb-11	Revision 2	SCS/MHE	BSC

Actual Work
 Remaining Work
 Critical Remaining Work
 Milestone
 Summary



Date	Revision	Checked	Approved
02-Feb-11	Revision 0	SCS/MHE	BSC
16-Feb-11	Revision 1	SCS/MHE	BSC
18-Feb-11	Revision 2	SCS/MHE	BSC

- Actual Work
- Remaining Work
- Critical Remaining Work
- Milestone
- Summary



Date	Revision	Checked	Approved
02-Feb-11	Revision 0	SCS/MHE	BSC
16-Feb-11	Revision 1	SCS/MHE	BSC
18-Feb-11	Revision 2	SCS/MHE	BSC

- Actual Work
- Remaining Work
- Critical Remaining Work
- Milestone
- Summary

Activity ID	Activity Name	Original Duration	Start	Finish	Total Float	2011												2012												2013											
						M	Apr	M	Jun	Jul	A	S	Oct	N	D	Jan	F	M	Apr	M	Jun	Jul	Aug	S	Oct	N	D	Jan	F	M	Apr	M	Jun	Jul	A	S	Oct	N	Dec		
6A-014-TRCK-95(3)	Handover to Track Contractor	0	25-May-11	180	◆ Handover to Track Contractor																																				
6A-014-TRCK-96(3)	Trackwork	23	08-Aug-11	08-Sep-11	129	■ Trackwork																																			
Area 5 (Workshop Area inc. hardstanding)		46	29-Apr-11	06-Jul-11	129	▼ 06-Jul-11, Area 5 (Workshop Area inc. hardstanding)																																			
6A-014-TRCK-52(3)1C	Drains	10	29-Apr-11	16-May-11	129	■ Drains																																			
6A-014-TRCK-60(3)1C	Ducts	5	16-May-11	23-May-11	129	■ Ducts																																			
6A-014-TRCK-74(3)1C	Cut Formation	3	23-May-11	26-May-11	129	■ Cut Formation																																			
6A-014-TRCK-75(3)1C	Subbase	5	26-May-11	03-Jun-11	129	■ Subbase																																			
6A-014-TRCK-76(3)1C	Track Slab	10	03-Jun-11	17-Jun-11	129	■ Track Slab																																			
6A-014-TRCK-95(3)1C	Handover to Track Contractor	0	17-Jun-11	129	◆ Handover to Track Contractor																																				
6A-014-TRCK-96(3)1C	Trackwork	13	17-Jun-11	06-Jul-11	129	■ Trackwork																																			
Area 6 (East of Access Bridge)		106	29-Apr-11	29-Sep-11	129	▼ 29-Sep-11, Area 6 (East of Access Bridge)																																			
6A-013-TRCK-76(3)1C	Civils Preparation	40	29-Apr-11*	28-Jun-11	143	■ Civils Preparation																																			
6A-013-TRCK-95(3)1C	Handover to Track Contractor	0	28-Jun-11	143	◆ Handover to Track Contractor																																				
6A-013-TRCK-96(3)1C	Trackwork	15	08-Sep-11	29-Sep-11	129	■ Trackwork																																			
Depot Building		131	07-Apr-11	13-Oct-11	457	▼ 13-Oct-11, Depot Building																																			
E & M Workshop Equipment Installation		111	07-Apr-11	15-Sep-11	477	▼ 15-Sep-11, E & M Workshop Equipment Installation																																			
6A-01-BLDS-30	Access for visual inspection for E&M workshop equipment	0	07-Apr-11	588	◆ Access for visual inspection for E&M workshop equipment																																				
6A-01-BLDS-72	Installation of workshop equipment	90	10-May-11	15-Sep-11	457	■ Installation of workshop equipment																																			
6A-01-BLDS-31	Access for E&M workshop equipment	0	10-May-11	567	◆ Access for E&M workshop equipment																																				
Inspection & Handover		20	15-Sep-11	13-Oct-11	457	▼ 13-Oct-11, Inspection & Handover																																			
6A-01-BLDS-81	Inspection and Testing	20	15-Sep-11	13-Oct-11	457	■ Inspection and Testing																																			
Access Roads		64	29-Apr-11	02-Aug-11	509	▼ 02-Aug-11, Access Roads																																			
6A-01-ROAD-90(3)	Carpark	6	29-Apr-11	10-May-11	509	■ Carpark																																			
6A-01-ROAD-91(3)	Hardstanding	40	29-Apr-11	28-Jun-11	533	■ Hardstanding																																			
6A-01-ROAD-94(3)	Access Road	22	10-May-11	10-Jun-11	509	■ Access Road																																			
6A-01-ROAD-95(3)	Complete Access Road & Finishes	30	10-Jun-11	22-Jul-11	509	■ Complete Access Road & Finishes																																			
6A-01-JNCS-60	installation of traffic light control - Junction 208	6	22-Jul-11	02-Aug-11	509	■ installation of traffic light control - Junction 208																																			
E & M Installations		146	23-May-11	16-Dec-11	412	▼ 16-Dec-11, E & M Installations																																			
6A-01-ELEC-40	Access for visual inspection to cable pits for cable laying (Depot)	0	23-May-11	558	◆ Access for visual inspection to cable pits for cable laying (Depot)																																				
6A-01-OHLE-40	Access for visual inspection for E&M Depot installation	0	27-May-11	555	◆ Access for visual inspection for E&M Depot installation																																				
6A-01-SGNW-70	Install Signalling Wayside Equipment (Depot)	12	28-Jun-11	14-Jul-11	521	■ Install Signalling Wayside Equipment (Depot)																																			
6A-01-OHLE-50(3)	Installation of poles and building fixings (Depot)	16	28-Jun-11	20-Jul-11	143	■ Installation of poles and building fixings (Depot)																																			
6A-01-OHLE-41	Access for E&M Depot installation	0	28-Jun-11	143	◆ Access for E&M Depot installation																																				

Date	Revision	Checked	Approved
02-Feb-11	Revision 0	SCS/MHE	BSC
16-Feb-11	Revision 1	SCS/MHE	BSC
18-Feb-11	Revision 2	SCS/MHE	BSC

Actual Work ◆ Milestone
 Remaining Work ▼ Summary
 Critical Remaining Work

Activity ID	Activity Name	Original Duration	Start	Finish	Total Float	2011												2012												2013															
						M				A				M				A				M				A				M				A											
						Apr	May	Jun	Jul	Aug	Sep	Oct	Nov	Dec	Jan	Feb	Mar	Apr	May	Jun	Jul	Aug	Sep	Oct	Nov	Dec	Jan	Feb	Mar	Apr	May	Jun	Jul	Aug	Sep	Oct	Nov	Dec							
6A-01-ELEC-41	Access to cable pits for cable laying (Depot)	0	28-Jun-11		483	◆ Access to cable pits for cable laying (Depot)																																							
6A-01-ELEC-70	Install Electrical Cables Depot	25	28-Jun-11	03-Aug-11	508	■ Install Electrical Cables Depot																																							
6A-01-SIGN-40	Installation of 2 SIG-interlocking cubicles depot entries	25	12-Jul-11	17-Aug-11	483	■ Installation of 2 SIG-interlocking cubicles depot entries																																							
5C-02-SIGN-90	installation of SIG equipment on depot entry west	10	26-Jul-11	10-Aug-11	488	■ installation of SIG equipment on depot entry west																																							
6A-01-OHLE-60(3)	Overhead Catenary Line (Depot)	76	10-Aug-11	24-Nov-11	129	■ Overhead Catenary Line (Depot)																																							
5C-03-SIGN-90	installation of SIG equipment on depot entry east	10	17-Aug-11	31-Aug-11	483	■ installation of SIG equipment on depot entry east																																							
6A-01-SIGN-80	Commissioning of 2 SIG -interlocking cubicles depot entries	10	24-Aug-11	07-Sep-11	483	■ Commissioning of 2 SIG-interlocking cubicles depot entries																																							
6A-01-OHLE-60(3)10	OCS Testing & Commissioning	15	24-Nov-11	16-Dec-11	412	■ OCS Testing & Commissioning																																							
Operation Control Center (OCC)						483	31-Mar-11	25-Mar-13	124	◆ Access for installation on operating and equipment floor																																			
6A-01-SIGN-100	Access for installation on operating and equipment floor	0		31-Mar-11	410	■ operating floor fit out																																							
6A-01-SIGN-110	operating floor fit out	25	31-Mar-11	09-May-11	410	■ equipment floor fit out SIG/COM/SCADA/Radio																																							
6A-01-SIGN-150	equipment floor fit out SIG/COM/SCADA/Radio	25	09-May-11	14-Jun-11	544	■ testing and commissioning OCC equipment																																							
6A-01-SIGN-200	testing and commissioning OCC equipment AIR - HAY	60	17-Dec-12	25-Mar-13	0	■ testing and commissioning OCC equipment																																							
SECTION 07 GOGAR TO EDINBURGH AIRPORT						358	31-Mar-11	07-Sep-12	236	◆ Access for visual inspection for E&M wayside installation GBN - IPR																																			
07A Gogarburn (exc.) to Edinburgh Airport (inc.)						358	31-Mar-11	07-Sep-12	236	◆ Access for E&M wayside installation GBN - IPR																																			
E & M Installations						372	2-Sep-11	30-Jul-12	236	◆ Access for visual inspection for E&M wayside installation GBN - IPR																																			
7A-04-OHLE-30	Access for visual inspection for E&M wayside installation GBN - IPR	0	24-Oct-11		475	◆ Access for E&M wayside installation GBN - IPR																																							
7A-04-OHLE-31	Access for E&M wayside installation GBN - IPR	0	22-Nov-11		150	■ Installation of poles and building fixings -20 (71 0581 - 71 1351)																																							
7A-04-OHLE-50	Installation of poles and building fixings -20 (71 0581 - 71 1351)	4	16-Dec-11	22-Dec-11	162	◆ Access for visual inspection to cable pits for cable laying GBN - IPR																																							
7A-04-ELEC-30	Access for visual inspection to cable pits for cable laying GBN - IPR	0	19-Jan-12		399	◆ Access to cable pits for cable laying GBN - IPR																																							
7A-04-ELEC-31	Access to cable pits for cable laying GBN - IPR	0	17-Feb-12		354	■ Install Electrical Cables GBN - IPR																																							
7A-04-ELEC-60	Install Electrical Cables GBN - IPR	13	17-Feb-12	07-Mar-12	357	■ Install Fibre Optic Cables DEH - GBN - IPR + DEP																																							
7A-01/02/04-TELC-60	Install Fibre Optic Cables DEH - GBN - IPR + DEP	15	17-Feb-12	09-Mar-12	362	■ Install Signalling Wayside Equipment GBN - IPR																																							
7A-04-SGNW-60	Install Signalling Wayside Equipment GBN - IPR	13	17-Feb-12	07-Mar-12	357	◆ Access for visual inspection for E&M wayside installation IPR - AIR																																							
7A-05-OHLE-30	Access for visual inspection for E&M wayside installation IPR - AIR	0	17-Apr-12		337	◆ Access for visual inspection to cable pits for cable laying IPR - AIR																																							
7A-05-ELEC-30	Access for visual inspection to cable pits for cable laying IPR - AIR	0	11-May-12		320	◆ Access for E&M wayside installation IPR - AIR																																							
7A-05-OHLE-31	Access for E&M wayside installation IPR - AIR	0	17-May-12		12	■ Installation of poles and building fixings -21 (71 1129 - 71 2580)																																							
7A-04/05-OHLE-50(3)	Installation of poles and building fixings -21 (71 1129 - 71 2580)	7	04-Jun-12	12-Jun-12	12	■ Installation of poles and building fixings -19 (53 1566 - 71 0781)																																							
7A-02/04-OHLE-50	Installation of poles and building fixings -19 (53 1566 - 71 0781)	7	04-Jun-12	12-Jun-12	354	■ Install Electrical Cables IPR - AIR																																							
7A-05-ELEC-60	Install Electrical Cables IPR - AIR	7	12-Jun-12	21-Jun-12	291	■ Install Signalling Wayside Equipment IPR - AIR																																							
7A-05-SGNW-60	Install Signalling Wayside Equipment IPR - AIR	7	12-Jun-12	21-Jun-12	291																																								

Date	Revision	Checked	Approved
02-Feb-11	Revision 0	SCS/MHE	BSC
16-Feb-11	Revision 1	SCS/MHE	BSC
18-Feb-11	Revision 2	SCS/MHE	BSC

- Actual Work
- ◆ Milestone
- Remaining Work
- ◆ Summary
- Critical Remaining Work

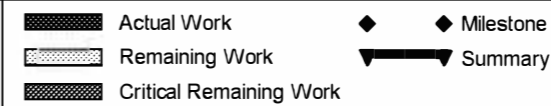
Activity ID	Activity Name	Original Duration	Start	Finish	Total Float	2011												2012												2013													
						M	Apr	M	Jun	Jul	A	S	Oct	N	D	Jan	F	M	Apr	M	Jun	Jul	Aug	S	Oct	N	D	Jan	F	M	Apr	M	Jun	Jul	A	S	Oct	N	Dec				
7A-05-SIGN-40	Installation of SIG-interlocking cubicle AIR	15	12-Jun-12	03-Jul-12	273																																					█	Installation of SIG-interlocking cubicle AIR
7A-05-ELEC-31	Access to cable pits for cable laying IPR - AIR	0	12-Jun-12		273																																					◆	Access to cable pits for cable laying IPR - AIR
7A-04/05-TELC-70	Install Fibre Optic Cables GBN - IPR - AIR	10	12-Jun-12	26-Jun-12	284																																					█	Install Fibre Optic Cables GBN - IPR - AIR
7A-04/05-OHLE-60(3)	Overhead Catenary Line -21 (71 1129 - 71 2580 + 71 2388 - 71 2512)	18	13-Jun-12	06-Jul-12	2																																					█	Overhead Catenary Line -21 (71 1129 - 71 2580 + 71 2388 - 71 2512)
7A-04-OHLE-60	Overhead Catenary Line -20 (71 0581 - 71 1351)	9	25-Jun-12	06-Jul-12	2																																					█	Overhead Catenary Line -20 (71 0581 - 71 1351)
7A-05-TELC-60	Install Fibre Optic Cables IPR - AIR	4	26-Jun-12	02-Jul-12	284																																					█	Install Fibre Optic Cables IPR - AIR
7A-05-SIGN-90	installation of SIG equipment on crossover AIR	10	26-Jun-12	10-Jul-12	273																																					█	installation of SIG equipment on crossover AIR
7A-02/04-OHLE-60	Overhead Catenary Line -19 (53 1566 - 71 0781)	16	06-Jul-12	30-Jul-12	280																																					█	Overhead Catenary Line -19 (53 1566 - 71 0781)
7A-05-SIGN-80	Commissioning of SIG -interlocking cubicle AIR	5	10-Jul-12	17-Jul-12	273																																					█	Commissioning of SIG -interlocking cubicle AIR
Gogarburn (exc.) to Inglishton Park & Ride (inc.)		252	31-Mar-11	09-Apr-12	302																																					█	09-Apr-12, Gogarburn (exc.) to Inglishton Park & Ride (inc.)
Trackwork (1750m)		211	29-Apr-11	09-Mar-12	352																																					█	09-Mar-12, Trackwork (1750m)
Gogar Landfill Site (Gogarburn Tram Stop to Bridge Ch 0 to 400)		211	29-Apr-11	09-Mar-12	362																																					█	09-Mar-12, Gogar Landfill Site (Gogarburn Tram Stop to Bridge Ch 0 to 400)
7A-04-TRCK-120(3)	Remove Surcharge	12	29-Apr-11	18-May-11	59																																					█	Remove Surcharge
7A-04-TRCK-130(3)	Soil Nailing	52	18-May-11	02-Aug-11	59																																					█	Soil Nailing
7A-04-TRCK-140(3)	Reinforced Earth Embankment	44	02-Aug-11	03-Oct-11	59																																					█	Reinforced Earth Embankment
7A-04-TRCK-120	Pre Earthworks Drainage	16	03-Oct-11	25-Oct-11	59																																					█	Pre Earthworks Drainage
7A-04-TRCK-130	Earthworks Outwith Landfill Area	5	25-Oct-11	01-Nov-11	59																																					█	Earthworks Outwith Landfill Area
7A-04-TRCK-60	Post Earthworks Drainage	9	01-Nov-11	14-Nov-11	59																																					█	Post Earthworks Drainage
7A-04-TRCK-90	Ducting & OLE Foundations	18	14-Nov-11	09-Dec-11	59																																					█	Ducting & OLE Foundations
7A-04-TRCK-91	Reinstatements	5	09-Dec-11	16-Dec-11	59																																					█	Reinstatements
7A-04-TRCK-140	Sub base & Ballast	10	16-Dec-11	13-Jan-12	59																																					█	Sub base & Ballast
7A-04-TRCK-100	Track Laying (400m)	18	13-Jan-12	08-Feb-12	59																																					█	Track Laying (400m)
7A-04-SIGN-70	wayside preparation for loops(0) and boxes(4)	2	06-Feb-12	08-Feb-12	260																																					█	wayside preparation for loops(0) and boxes(4)
7A-04-TRCK-86	Top Ballast	7	08-Feb-12	17-Feb-12	59																																					█	Top Ballast
7A-04-TRCK-110	Fencing & Trackside Finishes	15	17-Feb-12	09-Mar-12	362																																					█	Fencing & Trackside Finishes
Gogarburn Bridge to Inglishton Tram Stop Ch 400 to 800		95	29-Apr-11	14-Sep-11	506																																					█	14-Sep-11, Gogarburn Bridge to Inglishton Tram Stop Ch 400 to 800
7A-04-TRCK-35	Reinstatements	15	29-Apr-11	23-May-11	203																																					█	Reinstatements
7A-04-TRCK-150	Gogar Farm Roadworks	15	29-Apr-11	23-May-11	213																																					█	Gogar Farm Roadworks
7A-04-TRCK-40	Sub base & Ballast	10	23-May-11	07-Jun-11	203																																					█	Sub base & Ballast
7A-04-TRCK-70	Track Laying (1750m)	20	18-Jul-11	15-Aug-11	203																																					█	Track Laying (1750m)
7A-04-SIGN-60	wayside preparation for loops(0) and boxes(8)	2	12-Aug-11	15-Aug-11	404																																					█	wayside preparation for loops(0) and boxes(8)

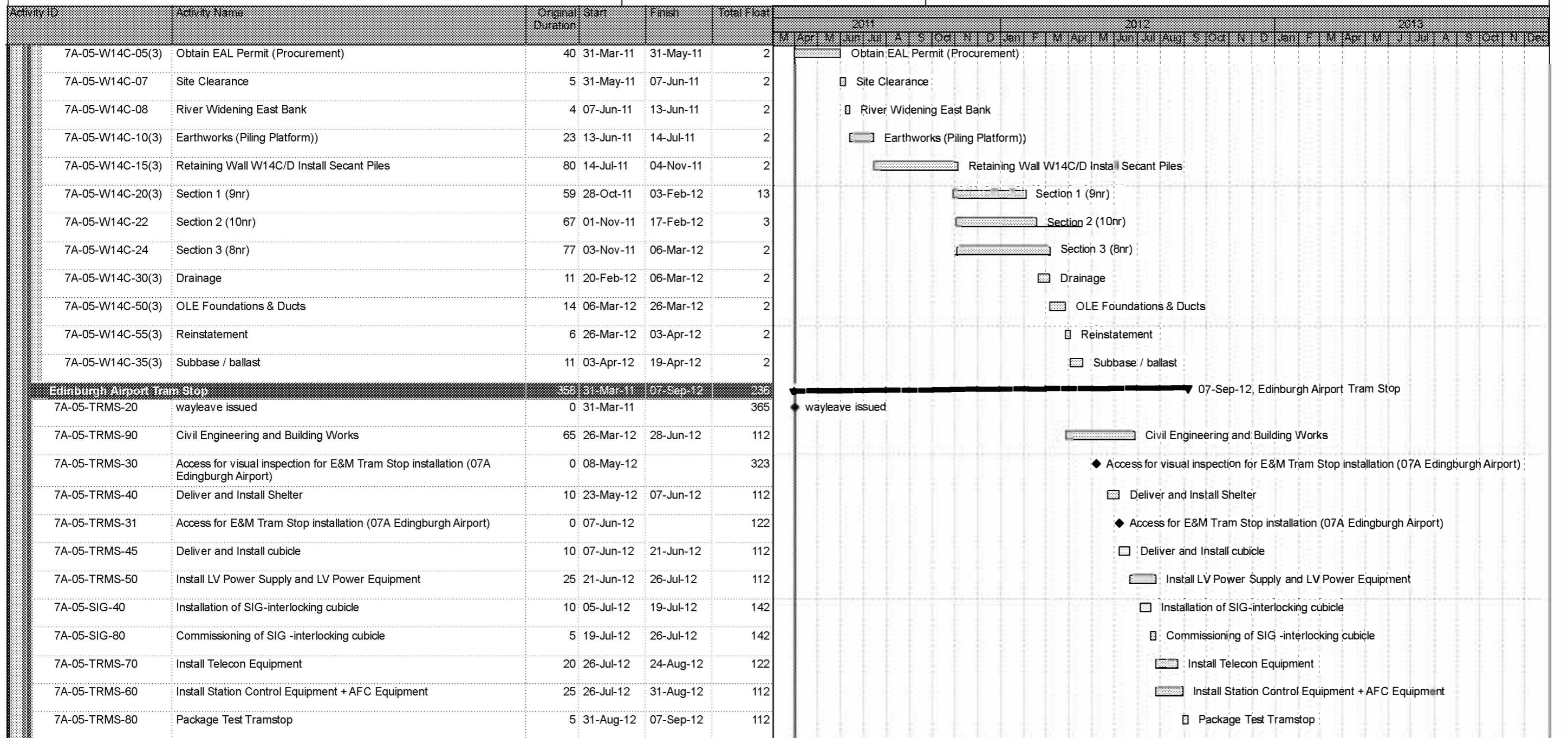
Date	Revision	Checked	Approved
02-Feb-11	Revision 0	SCS/MHE	BSC
16-Feb-11	Revision 1	SCS/MHE	BSC
18-Feb-11	Revision 2	SCS/MHE	BSC

Actual Work
 Remaining Work
 Critical Remaining Work
 Milestone
 Summary

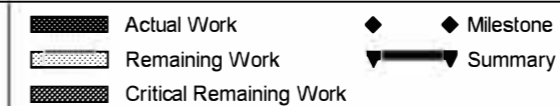
Activity ID	Activity Name	Original Duration	Start	Finish	Total Float	Gantt Chart																																	
						2011					2012					2013																							
						M	Apr	M	Jun	Jul	A	S	Oct	N	D	Jan	F	M	Apr	M	Jun	Jul	Aug	S	Oct	N	D	Jan	F	M	Apr	M	Jun	Jul	A	S	Oct	N	Dec
7A-04-TRCK-76	Top Ballast	7	16-Aug-11	24-Aug-11	203	■ Top Ballast																																	
7A-04-TRCK-80	Fencing & Trackside Finishes	15	25-Aug-11	14-Sep-11	506	■ Fencing & Trackside Finishes																																	
Gogarburn Bridge to Ingliston Tram Stop Ch 800 to 1750		169	29-Apr-11	11-Jan-12	428	■ Gogarburn Bridge to Ingliston Tram Stop Ch 800 to 1750																																	
7A-04-TRCK-180	OLE Foundations & ducts	24	29-Apr-11	06-Jun-11	135	■ OLE Foundations & ducts																																	
7A-04-TRCK-51(3)20	Critical NIL Works	30	06-Jun-11	18-Jul-11	135	■ Critical NIL Works																																	
7A-04-TRCK-135	Reinstatements	5	18-Jul-11	25-Jul-11	135	■ Reinstatements																																	
7A-04-TRCK-190	Sub base & Ballast	23	25-Jul-11	26-Aug-11	135	■ Sub base & Ballast																																	
7A-04-TRCK-200	Track Laying	30	29-Sep-11	10-Nov-11	135	■ Track Laying																																	
7A-04-SIGN-80	wayside preparation for loops(0) and boxes(8)	2	08-Nov-11	10-Nov-11	337	■ wayside preparation for loops(0) and boxes(8)																																	
7A-04-TRCK-96	Top Ballast	8	10-Nov-11	22-Nov-11	135	■ Top Ballast																																	
7A-04-TRCK-170	Fencing & Trackside Finishes	25	22-Nov-11	11-Jan-12	428	■ Fencing & Trackside Finishes																																	
Ingliston Park and Ride Tram Stop		252	31-Mar-11	09-Apr-12	366	◆ wayleave issued (09-Apr-12, Ingliston Park and Ride Tram Stop) ■ Civil Engineering and Building Works ◆ Access for visual inspection for E&M Tram Stop installation (07A Ingliston Park+Ride) ■ Deliver and Install Shelter ◆ Access for E&M Tram Stop installation (07A Ingliston Park+Ride) ■ Deliver and Install cubicle ■ Install LV Power Supply and LV Power Equipment ■ Install Telecon Equipment ■ Install Station Control Equipment + AFC Equipment ■ Package Test Tramstop																																	
7A-04-TRMS-20	wayleave issued	0	31-Mar-11		365																																		
7A-04-TRMS-90	Civil Engineering and Building Works	65	13-Oct-11	27-Jan-12	162																																		
7A-04-TRMS-30	Access for visual inspection for E&M Tram Stop installation (07A Ingliston Park+Ride)	0	22-Nov-11		453																																		
7A-04-TRMS-40	Deliver and Install Shelter	10	09-Dec-11	23-Dec-11	242																																		
7A-04-TRMS-31	Access for E&M Tram Stop installation (07A Ingliston Park+Ride)	0	23-Dec-11		252																																		
7A-04-TRMS-45	Deliver and Install cubicle	10	23-Dec-11	20-Jan-12	242																																		
7A-04-TRMS-50	Install LV Power Supply and LV Power Equipment	25	20-Jan-12	24-Feb-12	242																																		
7A-04-TRMS-70	Install Telecon Equipment	20	24-Feb-12	23-Mar-12	247																																		
7A-04-TRMS-60	Install Station Control Equipment + AFC Equipment	25	24-Feb-12	30-Mar-12	242																																		
7A-04-TRMS-80	Package Test Tramstop	5	30-Mar-12	09-Apr-12	242																																		
Ingliston Park and Ride Substation		183	31-Mar-11	10-Jan-12	406	◆ wayleave granted (BAA + substation area) (10-Jan-12, Ingliston Park and Ride Substation) ◆ meter issue for power supply clarified ■ Civil Engineering and Building Works ■ installation HV cable ◆ Access for visual inspection for E&M Substation installation (07A Ingliston Park and Ride) ■ cable duct for Power Infeed ◆ Access for E&M Substation installation (07A Ingliston Park and Ride) ◆ Power Infeed from Public Net available inc HV cable																																	
7A-01-SUBS-110	wayleave granted (BAA + substation area)	0		31-Mar-11	276																																		
7A-01-SUBS-120	meter issue for power supply clarified	0		31-Mar-11	306																																		
7A-04-SUBS-90	Civil Engineering and Building Works	65	29-Apr-11	03-Aug-11	247																																		
7A-01-SUBS-130	installation HV cable	40	27-Jun-11	23-Aug-11	247																																		
7A-04-SUBS-30	Access for visual inspection for E&M Substation installation (07A Ingliston Park and Ride)	0	04-Jul-11		247																																		
7A-04-SUBS-100	cable duct for Power Infeed	5	04-Jul-11	11-Jul-11	247																																		
7A-04-SUBS-31	Access for E&M Substation installation (07A Ingliston Park and Ride)	0	03-Aug-11		247																																		
7A-04-SUBS-40	Power Infeed from Public Net available inc HV cable	0	23-Aug-11		247																																		

Date	Revision	Checked	Approved
02-Feb-11	Revision 0	SCS/MHE	BSC
16-Feb-11	Revision 1	SCS/MHE	BSC
18-Feb-11	Revision 2	SCS/MHE	BSC





Date	Revision	Checked	Approved
02-Feb-11	Revision 0	SCS/MHE	BSC
16-Feb-11	Revision 1	SCS/MHE	BSC
18-Feb-11	Revision 2	SCS/MHE	BSC



APPENDIX 5.2
PPP Sectional Completion Dates

Section	Scope	Target Date	Remarks
A	Section A means completion of the Depot (fully functional including energisation) and the first Tram delivered to the Site and assembled;	16 December 2011	
B	Section B means completion of the test track functional from the Depot west entry/exit to the airport, and five Trams delivered to the Site and assembled with the first Tram to have completed the Tram Type Test and the remaining Trams to have completed the Tram Commissioning Routine Tests, such tests as described in the Employer's Requirements and the completion of all tests required to enable the commencement of Driver Training;	24 September 2012	Allows one year + shadow running remaining time for driver training - lineside systems fully functional - OCC and radio communication functional only as far as available.
C	Section C means the carrying out and completion of the section from Airport to Haymarket and the completion of all tests required by the Employer's Requirements in relation to that Section, including those System Acceptance Tests that must be successfully completed prior to shadow running as provided for in the Employer's Requirements;	End of construction 11 March 2013 End of T&C 24 June 2013	3 month for Testing & Commissioning (OCC and radio communication fully functional)
D	Section D means the completion of shadow running and commencement of revenue service approval obtained and the completion of all tests required by the Employer's Requirements in relation to that Section, including those System Acceptance Tests that must be successfully completed to enable Service Commencement; Tram Commissioning Routine Tests performed for trams	22 September 2013	