



Infrastructure Services

MUDFA Project
Western Harbour
Leith Docks
Edinburgh
EH6 6QF

Telephone 0131 [REDACTED]
Facsimile 0131 [REDACTED]
www.alfredmcalpineplc.com

Ref: AMIS/tie/letter/AM/Projects/113

26th February 2007

Ms. Susan Clark
tie MUDFA Utilities Project Manager
tie Limited.
Verity House,
19 Haymarket Yards,
Edinburgh.
EH12 5BH

26 FEB 2007

Dear Susan,

Subject : MUDFA Alfred McAlpine Infrastructure Services (AMIS) – Contract A150
MUDFA AMIS Project Progress Report – Contract Requirement 2.46

I refer to the above referenced contract requirement and have pleasure in presenting a copy of the AMIS Project Progress Report covering the February 2007 reporting period for your review and information. I take this opportunity to highlight the "Key Issues and Discussions Points" contained within Appendix 2 and trust that we are able to discuss each point in detail at the progress meeting on Thursday 1st March 2007 at 10.00 hrs, MUDFA Offices.

Yours sincerely,

For and on behalf of **Alfred McAlpine Infrastructure Services Ltd**

[REDACTED]
Andrew Malkin
MUDFA AMIS Project Director

Copies:-

Tie Project Team
See Report Distribution

MUDFA Project Team
See Report Distribution

AMIS Corporate
AMIS MUDFA Board



Alfred McAlpine Infrastructure Services Limited. Registered in England No. 00728599
Registered Office: Kinnaird House, 1 Pall Mall East, London SW1Y 5AZ

CEC01835674_0001



**MULTI-UTILITY DIVERSION FRAMEWORK
 AGREEMENT (MUDFA)**
 Relating to the
Edinburgh Tram Network
Contract No. A150

**ALFRED McALPINE
 INFRASTRUCTURE SERVICES (AMIS)**

DOCUMENT No. A150/PM/PRJ-REP/005

DOCUMENT TITLE :

PROJECT MONTHLY REPORT
FEBRUARY 2007

VERSION No : 01

PAGE : 1 of 17

DOCUMENT OWNER : ANDREW MALKIN

| | | | | | | | |
|---------------|----------|---------|----------|----------|------------|----------------|------|
| | | | | | | CODE A, B OR C | |
| | | | | | | | |
| Andrew Malkin | 22.02.07 | | 22.02.07 | | 23.02.07 | | |
| Author | Date | Checked | Date | Approved | Issue Date | Approved | Date |

MUDFA AMIS PROJECT TEAM

Tie / Client



Infrastructure Services



MULTI-UTILITY DIVERSION FRAMEWORK AGREEMENT (MUDFA)

Project Monthly Report – February 2007

Contents

1. Executive Summary
2. Health and Safety, CDM, Quality and Environmental
3. SDS Design Interface and Buildability Analysis
4. Operations Management
5. Communications and Stakeholders
6. Construction Planning and Project Controls
7. Contract and Commercial Management
8. Pre-Construction Services : Schedule 1 Contract Deliverables
9. Contract Correspondence

Appendices :

1. Pre-Construction Services : Overall Progress "S" Curves (2 Pages)
2. Progress Meeting Key Issues and Discussion Points (1 Page)
3. AMIS MUDFA Risk Register and Mitigation Action Plan (2 Pages)
4. AMIS MUDFA Change Control Register (1 Page)
5. AMIS MUDFA to tie Limited Contract Correspondence Matrix and Status (3 Pages)

Distribution :

Tie Limited Project Management

Matthew Crosse, Susan Clark, Graeme Barclay, Allan Hill (Chair), John Low, Jim Johnson, Martin Hutchinson, John McAloon and Tom Condie

AMIS Project Management

Andrew Malkin, Keith Gourlay, Graeme Strachan, Gerry Bannon, Stephen Clemenson, Stephen Crosbie, Mark Riley, Roddy Aves, Bill Jarvie, Bill Murray, AMIS Board (Alan Robertson) & AMIS MUDFA Contract File (26 Copies in Total)



Infrastructure Services



MULTI-UTILITY DIVERSION FRAMEWORK AGREEMENT (MUDFA)

1. Executive Summary

Alfred McAlpine Infrastructure Services (AMIS) continues to work and support the overall project in relation to the utility design interface and construction services; and is currently concentrating on the finalisation and release of Pre-Construction Services (PCS) Schedule 1 deliverables. The current construction focus is on the Trial Site at Casino Square scheduled to commence on 2nd April 2007.

In the February 2007 reporting period AMIS MUDFA has earned and achieved accumulative "Actual" progress of 85.8% against a "Planned" requirement of 87.5% (Refer to Appendix 1; Pages 1 and 2). The reported deviation of 1.7% at the monthly cut-off point of 23rd February 2007 relates to a number of Schedule 1 Deliverables and these will be completed, finalised and issued four weeks prior to the end of Pre-Construction Services (i.e. Monday 5th March 2007).

Consistently with the first, second, third and fourth AMIS MUDFA monthly project reports the main concerns still remains in relation to the current status of the detailed utility design outputs, programme baseline, SUC technical interfaces, work ordering and may be summarised as follows :

- Lateness, content and accuracy of Utility Detailed Design Outputs (AFI/AFC) and SUC / tie Limited approvals.
- tie Limited and Stakeholder Imposed Programme (Revision 03); Late design drawing (AFI/AFC) releases, commercial implications and re-planning of sustainable construction services.
- MUDFA, Non-MUDFA and INFRACO detailed demarcation on drawings.
- Value Engineering Workshop and AMIS MUDFA incentivisation, and
- Work Ordering; Lateness of issue and technical compliance.

The AMIS MUDFA team remains committed to carrying out the trial site works at Casino Square on Monday **2nd April 2007** (Time Remaining : **36** Calendar Days and **25** Working Days). AMIS MUDFA takes this opportunity to remind all parties that permission is still required from the Casino owners and opening notifications have still to be issued. Finally, there are no IFC / AFC (SUC / tie Limited approved) drawings or technically compliant work order currently available. In the February 2007 reporting period two teambuilding exercises have been completed.



Infrastructure Services



MULTI-UTILITY DIVERSION FRAMEWORK AGREEMENT (MUDFA)

2. Health and Safety, CDM, Quality and Environmental

In the reporting period **tie** Limited, Scot Wilson Scotland (SWS) and AMIS MUDFA QUENSH specialists continue to hold regular health and safety, environmental and quality meetings with specific focus on securing key information to support the detailed development of construction related quality control procedures. AMIS MUDFA continues to secure copies of the SDS HAZID LOG with increased urgency to assist with the development of risk assessments and method statements (i.e. Trial Site at Casino Square). AMIS MUDFA will finalise the quality, environmental, health and safety management procedures complete with "Hold Points" for **tie** Limited approval (i.e. Code A or B). AMIS MUDFA continues to collate expended hours for the purposes of Accident Frequency Rate (AFR) reporting and to the monthly cut-off point has expended a total of 9,413 Staff-Hours (Includes site subcontractors).

3. SDS Design Interface and Buildability Analysis

3.1 Overview

Tie Limited, SDS and AMIS MUDFA Utility Design and Technical liaison specialists continue to hold weekly Design and Technical Liaison meetings in order to provide technical support and assistance in relation to C4/IFC Utility Detailed Design Drawings. AMIS MUDFA concerns still remain in relation to the lack of technical definition and detail required to support material take-off, planning and effective construction operations. AMIS MUDFA still proposes that the trial site is used as a comparison of "Work Order" authorisation and "As-Built / Final Account" value to highlight the importance of pre-planning, technical definition and detailing to substantiate the Anticipated Final Account (AFA) and associated change controls.

As per AMIS MUDFA contract correspondence and previous monthly reports a "Step-Change" is urgently required (Refer to Appendix 2) and the issues associated with detailed utility design, design process ownership, SUC approvals, accelerated design outputs and integrated construction programme all requiring immediate resolution in order to comply with the **tie** Limited and Stakeholder Imposed Programme (Rev 03), or alternate construction programme.



Infrastructure Services



MULTI-UTILITY DIVERSION FRAMEWORK AGREEMENT (MUDFA)

3.2 Design Issues and Resolution

As reported previously AMIS MUDFA are required under contract to highlight any concerns (References; AMIS/tie/letter/AM/Projects/007, 009, 013, 025, 027, 031, 032, 034, 035, 039, 055, 065, 082, 083, 086, 095 & 102) relating to technical objectives, project cost and timescale; and have formally communicated on a regular basis in order to seek further clarification and assistance (See Appendix 5).

4. Operations Management

4.1 Overview

The AMIS MUDFA Operations team continues reviewing the SDS preliminary utility design drawings as part of the construction pre-planning and "Buildability" analysis, and have concentrated this month on the trial site and specific needs of the early construction works as per the tie Limited & Stakeholder Imposed Programme (Rev 03). The current construction programme is not supported by IFC / AFC Utility design drawings and AMIS MUDFA are now seeking work around solutions on Sections 5B, 5C and alternate construction works at Ingliston Park / Ride and Gogarburn Depot. In the February 2007 reporting period AMIS specialists have completed a draft "Roads Re-Instatement" proposal for tie Limited and CEC review and approval.

4.2 Traffic Management

Tie Limited and AMIS MUDFA continue to hold Traffic Management meetings throughout February 2007 and have agreed the AMIS Traffic Management Strategy, "Hot-Spot" and first Traffic Management Plans for the Trial Site area.

The traffic management discussions and plans developed to date have been approved in principle by tie Limited which now allows AMIS MUDFA to generate a full suite of traffic management plans for the entire project. Further consideration will be given to ongoing major works within the City Centre during March 2007 and arrangements have been made to establish a "Synology" terminal at the MUDFA offices.

5. Communications and Stakeholders

5.1 Overview

Within the February 2007 reporting period AMIS MUDFA has attended several tie Limited communication meetings, a major team building event and publishing of various customer care information required for advanced customer notifications. The



Infrastructure Services



MULTI-UTILITY DIVERSION FRAMEWORK AGREEMENT (MUDFA)

printing of the Edinburgh Tram Logo was not successful and AMIS MUDFA has issued instructions to re-print the entire stock.

AMIS MUDFA has requested marked-up comments on the Communications Plan (Revision 01) so that the designated PCS Schedule 1 Deliverable can be updated and completed according to the programme. Mr. Thomas Reid commences work full time in Mid-March 2007 as the first tram helper, along with Ms. Mandy Nelson as the AMIS MUDFA Customer Care Manager focussing on communications and advanced notifications (i.e. 2nd April 2007) supported by Mrs. Christine Turpie.

6. Construction Planning and Project Controls

6.1 Overview

AMIS MUDFA has completed the first pass of the P3e Detailed Construction Programme covering all 125 work sites and has baselined in accordance with the **tie** Limited and Stakeholder Imposed Programme (Revision 03). As reported previously the detailed planning development at Level 4 is ongoing and is subject to the receipt of detailed utility design outputs at IFC/AFC issue (Refer to 3.2 previous and Executive Summary). The AMIS MUDFA Operations team have developed detailed plans for the Trail Site at Casino Square for inclusion in the work order dossier.

7. Contract and Commercial Management

7.1 General

Tie Limited and AMIS MUDFA have held commercial review meetings within the February 2007 reporting period and discussed the Anticipated Final Account (AFA) at Revision 03 (Issued 7th February 2007). The AMIS MUDFA 3rd Pass Anticipated Final Account (AFA) remains at £68,497,207.00; and AMIS MUDFA awaits the issue of further SDS IFC / AFC drawings in order to further develop and refine the current AFA position.

7.2 Application for Payment

AMIS MUDFA has completed a second application for payment and the accumulative total stands at £877,223.00 with a certified value of £734,024.28. The shortfall payment resulting from retention as reported previously has been rectified within this reporting period.



MULTI-UTILITY DIVERSION FRAMEWORK AGREEMENT (MUDFA)

7.3 Risk Management

In the February 2007 reporting period the AMIS MUDFA "Risk Management and Mitigation Plan" was updated and re-submitted to the tie Utility Project Management team. The AMIS MUDFA risk and mitigation plan still shows an unusual amount of "RED RISKS" at this stage of the project and detailed discussions are still required to address key concerns (See Section 9 and Appendix 3 – Meeting action still outstanding).

7.4 Work Order Process and Authorisation

AMIS MUDFA has received a first pass work order from tie Limited although technical compliance has been subject to review and discussion and in particular relation to SDS Design drawings at IFC issue and detailed scope of work definition. AMIS MUDFA proposes a detailed review of the Work Ordering process be carried out with a view to significantly reducing the various co-ordination requirements and timescales for delivery to meet the programme.

7.5 Commercial Change Control

There has been a number of tie Limited change requests registered within the December 2006 / February 2007 reporting periods and these have been logged within the AMIS MUDFA Change Control Register for ongoing commercial review and agreement (See Appendix 4). The current change control register under commercial review is in the region of £320 to £ 380k.

8. Pre-Construction Services : Schedule 1 Contract Deliverables

AMIS MUDFA as per previous monthly reports has included within Appendix 1 a copy of the Pre-Construction Services "S" Curves in order to report on progress and to track the ongoing development status of MUDFA PCS Schedule 1 Deliverables. At the report cut-off date of 23rd February 2007 the following PCS Schedule 1 Deliverables were reported as being slightly behind programme, namely :

| | |
|----------------------------------|--|
| tie Utilities Project Management | 2.18, 2.19, 2.20, 2.21, 2.22, 2.23, 2.24 & 5.1 |
| AMIS MUDFA Project Management | 2.25 |

The overall AMIS MUDFA accumulative planning and progress status for the reporting period of February 2007 is summarised within the following tabulation and illustrated graphically within Appendix 1 (Pages 1 and 2) :



MULTI-UTILITY DIVERSION FRAMEWORK AGREEMENT (MUDFA)

| Progress Criteria | % Monthly | % Accumulative |
|-------------------|-----------|----------------|
| Planned | 23.2 | 87.5 |
| Actual | 22.8 | 85.8 |
| Deviations | 0.4 | 1.7 |

9. Contract Correspondence

AMIS MUDFA continues to seek guidance and clarity on many contract requirements and although acknowledges receipt of more recent tie Limited correspondence there are still many major issues to be reviewed and resolved.

Susan Clark, Martin Hutchinson, Andrew Malkin and Keith Gourlay held a correspondence review meeting on 7th February 2007.

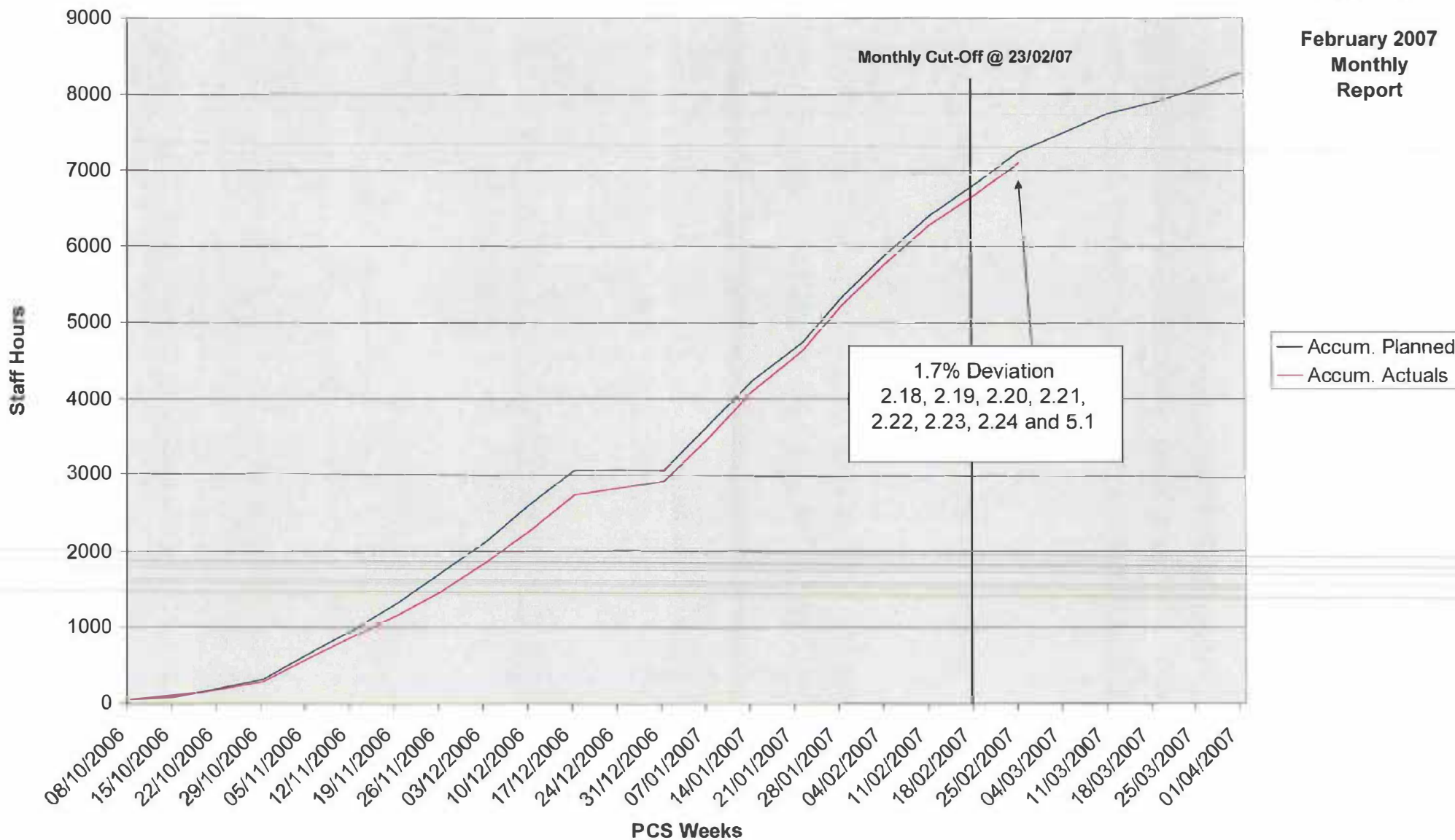
AMIS MUDFA requires all correspondence on detailed utility designs, design / construction integrated programme, technical objectives, cost and timescale to be addressed in detail and to the satisfaction of AMIS MUDFA and AMIS Board.

This will be subject to discussion at the monthly progress meeting currently scheduled for Thursday 1st March 2007 and attention is drawn to Appendix 5 regarding current status of contract correspondence.

Appendices :

1. Pre-Construction Services : Overall Progress "S" Curve (2 Pages)
2. Progress Meeting Key Issues and Discussion Points (1 Page)
3. AMIS MUDFA Risk Register and Mitigation Action Plan (2 Pages)
4. AMIS MUDFA Change Control Register (1 Page)
5. tie Limited / AMIS MUDFA Contract Correspondence Matrix and Status (3 Pages)

PCS SERVICES : OVERALL PROGRESS

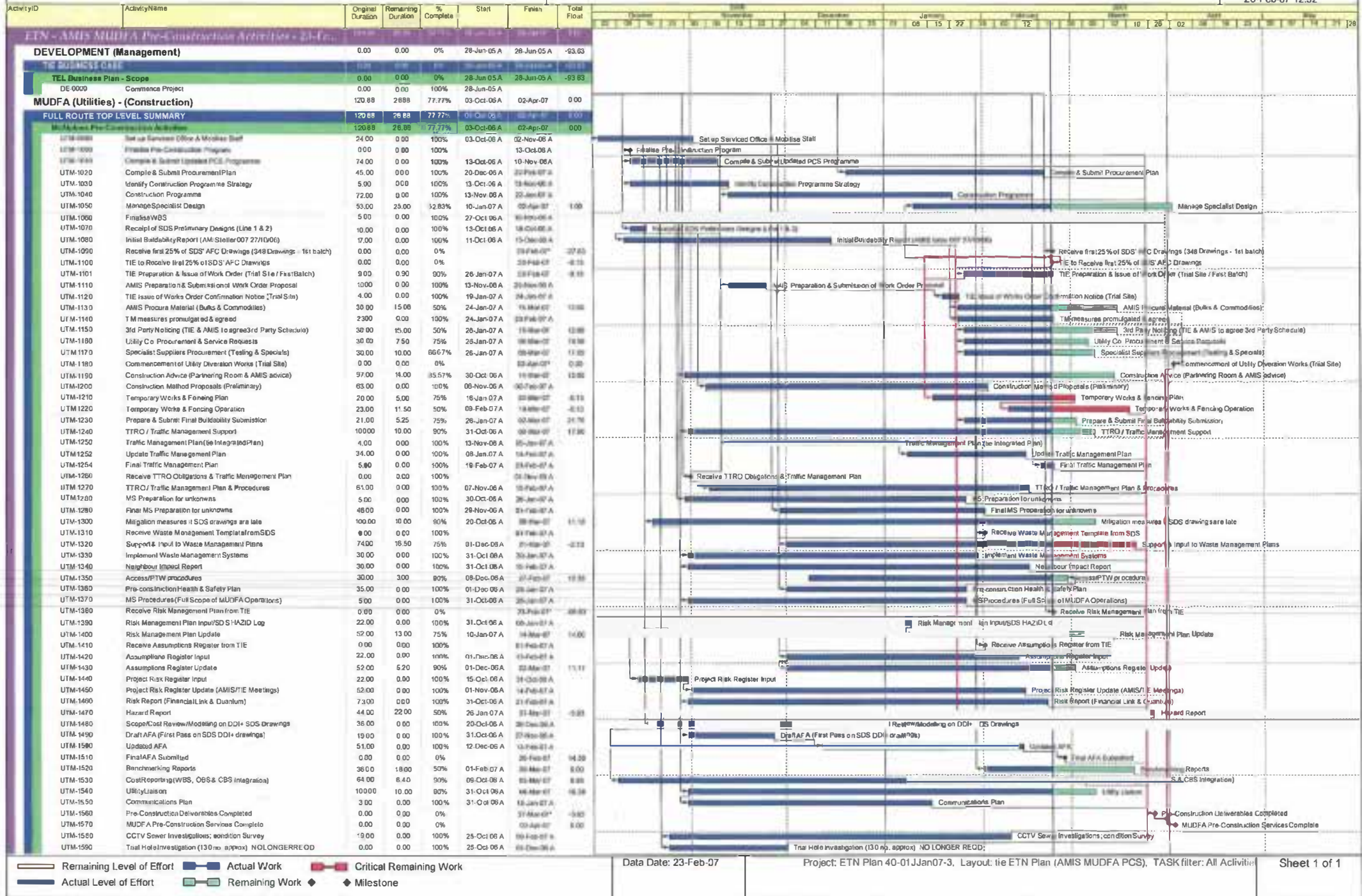


CEC01835674_0010

Trams for Edinburgh - Multi-Utility Diversion

AMIS MUDFA Pre-Construction Activities

26-Feb-07 12:32



— Remaining Level of Effort
 █ Actual Work
 █ Critical Remaining Work
█ Actual Level of Effort
 █ Remaining Work
 ◆ Milestone

Data Date: 23-Feb-07

Project: ETN Plan 40-01Jan07-3, Layout: tie ETN Plan (AMIS MUDFA PCS), TASK filter: All Activities

Sheet 1 of 1

CEC01835674_0012



| MUDFA Risk Matrix - Likelihood, Consequences & Ranking | | | | | | | | | | Risk Mitigation Action Planning | | | | |
|--|--|---|-------------------------|-----------------|------------------|----------------|--------|------------|---------------------------------|---|-------------|------------------------------|------------|------------------------------|
| Rel. | Risk | Risk Heading | Consequence Definitions | Risk Likelihood | Risk Consequence | Matrix Ranking | Trend | Risk Owner | Actions | Outline Mitigation Action Plan | Required By | Interaction and Dependencies | Compliance | Non Compliance Risk Analysed |
| 1 | Project Management | Availability of the Project Risk Register | R, F, D, H | 10 | 20 | 200 | Up | tie | S. Clark | Issue documentation & convene risk workshop(s) | | | | |
| | | Availability of the Assumptions Register | R, F, D, H | 10 | 20 | 200 | Up | tie | S. Clark | Issue documentation & convene risk workshop(s) | | | | |
| | | Validity of AMIS generated Stakeholder Imposed Programme | R, F, D, H | 10 | 20 | 200 | Up | tie | S. Clark | Stakeholder management | | | | |
| | | Stability of SDS Utility Design and AMIS Construction Programme and Interface criteria / resolution | R, F, D, H | 10 | 20 | 200 | Stable | tie | S. Clark | Visibility and management of deliverables by clearly defined deliverables and programme | | | | |
| | | Failure of a utility to agree a strategy for stop/change in improved Contract Performance | R, F, D, H | 10 | 20 | 200 | Stable | tie | S. Clark / A. Malkin | Identify and deliver recovery (left shift) strategy; status quo is not an option | | | | |
| | | Impact of SDS / IFC on AFA submission | R, F, D, H | 6 | 20 | 120 | Stable | tie | S. Clark / A. Dolan | Design detail and definition and baseline programme to be agreed | | | | |
| | | Failure of the utility to agree alternative Value Engineering Incentivisation Mechanism | R, F, D, H | 6 | 20 | 120 | Stable | tie | S. Clark / A. Malkin | Identify and deliver recovery (left shift) strategy; status quo is not an option | | | | |
| | | Failure to publish agreed organisation charts, roles, responsibilities and accountabilities, the SDS and AMIS | R, F, D, H | 6 | 20 | 120 | Stable | tie | S. Clark / A. Malkin / A. Dolan | Issue appropriate documentation | | | | |
| | | Failure to publish powers and delegated authority listings to align AMIS interaction | R, F, D, H | 6 | 20 | 120 | Stable | tie | S. Clark | Issue appropriate documentation | | | | |
| | | Continuity of the staff resources and Contract appreciation | R, F, D, H | 8 | 20 | 200 | Stable | tie | S. Clark | Succession Planning | | | | |
| 2 | Design Outputs | Design Accuracy | R, F, D, H | 10 | 20 | 200 | Stable | tie | A. Dolan | Visibility and management of deliverables by clearly defined deliverables and programme | | | | |
| | | Availability of the utility specialists to approve SDS design to match AMIS AFC requirements | R, F, D, H | 10 | 20 | 200 | Up | tie | S. Clark | Resource planning / skills analysis | | | | |
| | | Availability of Specifications | R, F, D, H | 10 | 20 | 200 | Up | tie | A. Dolan | Design detail and definition and baseline programme to be agreed that meets the MUDFA outputs | | | | |
| | | Likely solution criteria | R, F, D, H | 8 | 20 | 120 | Up | tie | A. Dolan | Design detail and definition and baseline programme to be agreed that meets the MUDFA outputs | | | | |
| | | Bill of Materials and Long Lead Items | R, F, D, H | 10 | 20 | 200 | Stable | tie | A. Dolan | Design detail and definition and baseline programme to be agreed that meets the MUDFA outputs | | | | |
| | | Stability of SDS Design Programme approved by tie | R, F, D, H | 10 | 20 | 200 | Stable | tie | S. Clark / A. Dolan | Design detail and definition and baseline programme to be agreed that meets the MUDFA outputs | | | | |
| | | Value Engineering opportunity/delisting | R, F, D, H | 10 | 20 | 200 | Stable | tie | S. Clark / A. Dolan | Identify and deliver recovery (left shift) strategy; status quo is not an option | | | | |
| | | Detail to Support Productive Design | R, F, D, H | 10 | 20 | 200 | Stable | tie | A. Dolan | Design detail and definition and baseline programme to be agreed that meets the MUDFA outputs | | | | |
| | | Delivery of AFC Designs meet Contract milestones / longstop date | R, F, D, H | 10 | 20 | 200 | Stable | tie | S. Clark / A. Dolan | Design detail and definition and baseline programme to be agreed that meets the MUDFA outputs | | | | |
| | | Utility Companies reluctance / refusal to approve SDS Design | R, F, D, H | 10 | 20 | 200 | Stable | tie | A. Dolan | Stakeholder management and escalation process | | | | |
| | | Impact of Utility Company approvals on Contract milestones / longstop date | R, F, D, H | 10 | 20 | 200 | Stable | tie | S. Clark | Design detail and definition and baseline programme to be agreed that meets the MUDFA outputs | | | | |
| | | SDS Failure to identify underground obstructions / obstacles | R, F, D, H | 10 | 20 | 200 | Stable | tie | A. Dolan | Design detail and definition and baseline programme to be agreed that meets the MUDFA outputs | | | | |
| | | Infraco Impact on Divisions, detail and extent | R, F, D, H | 10 | 20 | 200 | Stable | tie | A. Dolan | Design detail and definition and baseline programme to be agreed that meets the MUDFA outputs | | | | |
| | | Depth of slab under Infraco Contract | R, F, D, H | 10 | 20 | 200 | Stable | tie | A. Dolan | Design detail and definition and baseline programme to be agreed that meets the MUDFA outputs | | | | |
| | | Foundations for OHLE | R, F, D, H | 10 | 20 | 200 | Stable | tie | A. Dolan | Design detail and definition and baseline programme to be agreed that meets the MUDFA outputs | | | | |
| 3 | Statutory/Utility Companies | Imposed and/or Requested Believement, load pipe and mold | R, F, D, H | 6 | 20 | 120 | Stable | tie | S. Clark | Stakeholder management and escalation process | | | | |
| | | Commercial and Technical Management of Utility activities | R, F, D, H | 8 | 20 | 120 | Stable | tie / AMIS | S. Clark | Stakeholder management and escalation process | | | | |
| | | B Requirement for a 10 year warranty | R, F, D, H | 3 | 20 | 60 | New | tie | S. Clark | Stakeholder management and escalation process | | | | |
| | | Availability of utility specialists to support the approved and best fitted Stakeholder Imposed Programme | R, F, D, H | 10 | 20 | 200 | Stable | tie | S. Clark | Design detail and definition and baseline programme to be agreed that meets the MUDFA outputs | | | | |
| | | Disputed allocation of cost between parties | R, F, D, H | 8 | 20 | 120 | Stable | tie | S. Clark | Stakeholder management and escalation process | | | | |
| 4 | Design Development | Reluctance to carry out Trial Holes / Investigations (tie / CEC) | R, F, D, H | 10 | 20 | 200 | Up | tie | S. Clark | Robust review of all trial holes against design information | | | | |
| | | Impact of SDS Design on Trial Holes (Design Basis) | R, F, D, H | 10 | 20 | 200 | Stable | tie | A. Dolan | Robust review of all trial holes against design information | | | | |
| | | Impact on design programme as a consequence of design validation | R, F, D, H | 10 | 20 | 200 | Stable | tie | A. Dolan | Design detail and definition and baseline programme to be agreed that meets the MUDFA outputs | | | | |
| 5 | Stakeholder Interfaces, Requirements and Constraints | Impact of Utility Company Non-MUDFA Works & Services | R, F, D, H | 10 | 20 | 200 | Up | tie / AMIS | S. Clark | Stakeholder management and escalation process | | | | |
| | | Excess Traffic Management Constraints & Restrictions | R, F, D, H | 10 | 20 | 200 | Stable | tie | S. Clark | Design detail and definition and baseline programme to be agreed that meets the MUDFA outputs | | | | |
| | | Excessive political pressures and Operational Restrictions | R, F, D, H | 10 | 5 | 50 | Stable | tie | S. Clark | Stakeholder management and escalation process | | | | |
| | | Utility company claims for apparatus damage by MUDFA / AMIS | R, F, D, H | 6 | 5 | 30 | Stable | tie / AMIS | S. Clark / A. Malkin | Design detail and definition and baseline programme to be agreed that meets the MUDFA outputs | | | | |
| | | Late or Delayed TTRD Approvals by CEC | R, F, D, H | 10 | 20 | 200 | Stable | tie | S. Clark | Design detail and definition and baseline programme to be agreed that meets the MUDFA outputs | | | | |
| | | Impact of Utility Company emergency / ongoing CAPEX / OPEX Works | R, F, D, H | 10 | 5 | 50 | Stable | tie | S. Clark | Stakeholder management and escalation process | | | | |
| | | Major Utility Company Diversion Work (275kV) and MUDFA Interface | R, F, D, H | 10 | 20 | 200 | Stable | AMIS | S. Clark / A. Malkin | Stakeholder management and escalation process | | | | |
| | | CEC Road Reinstatement & Believement cur with LOD | R, F, D, H | 8 | 20 | 120 | Stable | tie / AMIS | S. Clark / A. Malkin | Stakeholder management | | | | |
| | | Non-MUDFA Works definition and Programme | R, F, D, H | 10 | 20 | 200 | Up | tie | S. Clark / A. Dolan | Stakeholder management | | | | |
| | | Infraco early works dependencies for MUDFA consideration | R, F, D, H | 10 | 5 | 50 | Stable | tie | S. Clark / A. Dolan | Demarcation schedule & delivery strategy | | | | |
| 6 | Asset Information | Utility Company upgrade costs | R, F, D, H | 3 | 20 | 60 | Stable | tie | S. Clark | Stakeholder management | | | | |
| | | Re-work / Additional Work resulting from poor utility condition not identified on IFC / AFC Designs | R, F, D, H | 10 | 20 | 200 | Stable | tie | A. Dolan | Design detail and definition and baseline programme to be agreed that meets the MUDFA outputs | | | | |
| 7 | Supply Chain | Unknown location and status of mains and branch sewers, Condition Surveys | R, F, D, H | 10 | 20 | 200 | Stable | tie | A. Dolan | Surveys | | | | |
| | | Little or Non Identification of Long Lead Items, Equipment and Apparatus | R, F, D, H | 10 | 20 | 200 | Stable | tie / AMIS | A. Dolan | Design detail and definition and baseline programme to be agreed that meets the MUDFA outputs | | | | |
| | | BT Gogar data cable nest diversion | R, F, D, H | 8 | 20 | 120 | New | tie / AMIS | A. Dolan | Design detail and definition and baseline programme to be agreed that meets the MUDFA outputs | | | | |
| 8 | Defined Scope of Works | Availability of Utility Company resources to support MUDFA | R, F, D, H | 10 | 20 | 200 | Stable | tie | S. Clark | Design detail and definition and baseline programme to be agreed that meets the MUDFA outputs | | | | |
| | | Failure to secure capacity | R, F, D, H | 10 | 20 | 200 | Stable | tie / AMIS | S. Clark / A. Malkin | Design detail and definition and baseline programme to be agreed that meets the MUDFA outputs | | | | |
| | | Additional work development as a consequence of Non MUDFA Works | R, F, D, H | 10 | 5 | 50 | Stable | tie | S. Clark | Demarcation schedule & delivery strategy | | | | |
| | | Additional work resulting from Infraco engineering works | R, F, D, H | 10 | 5 | 50 | Stable | tie | S. Clark | Demarcation schedule & delivery strategy | | | | |
| 9 | Emerging Work | Additional work resulting from Infraco support enabling | R, F, D, H | 10 | 5 | 50 | Stable | tie | S. Clark | Demarcation schedule & delivery strategy | | | | |
| | | Emerging work definition and forward planning - Car park, EARL (See Change Register) | R, F, D, H | 10 | 5 | 50 | Stable | tie | S. Clark | Demarcation schedule & delivery strategy | | | | |
| | | Work on Diversion @ Tram Stations | R, F, D, H | 10 | 5 | 50 | Stable | tie / AMIS | S. Clark | Demarcation schedule & delivery strategy | | | | |
| | | Work on Diversion @ Tram Stations | R, F, D, H | 10 | 5 | 50 | Stable | tie / AMIS | S. Clark | Demarcation schedule & delivery strategy | | | | |

CEC01835674_0014



| MUDFA Risk Matrix - Likelihood, Consequences & Ranking | | | | | | | | | Risk Mitigation Action Planning | | | | | |
|--|--|---|--|--|--|---|--|--|---|---|-------------|------------------------------|------------|------------------------------|
| Ref. | Risk | Risk Heading | Consequence Definitions | Risk Likelihood | Risk Consequence | Matrix Ranking | Trend | Risk Owner | Action/oo | Outline Mitigation Action Plan | Required By | Interaction and Dependencies | Compliance | Non Compliance Risk Analysed |
| 9 | CEC | Major events, possibly unknown & impact on programme / scope of works changing the Council Administration at the local elections | R, F, D, H R, F, D, H | 10 5 | 5 5 | 50 50 | Stable Stable | tie tie | S, Clark S, Clark | Integrated risk management Stakeholder management | | | | |
| 10 | Third Party Stakeholders | Domestic / Commercial Claims for Disruption of Services, Loss of Income and the like Schedule 13 Requirements Media Impact SDS condition survey accuracy and availability Tram Protestors | R, F, D, H R, F, D, H R, F, D, H R, F, D, H R, F, D, H | 6 10 10 10 10 | 5 20 20 20 20 | 50 100 100 100 100 | Stable Stable Stable Stable Up | tie / AMIS tie tie / AMIS tie tie / AMIS | S, Clark S, Clark S, Clark S, Clark / A, Dolan S, Clark / A, Malkin | Stakeholder management Stakeholder management Stakeholder management Stakeholder management Stakeholder management | | | | |
| 11 | Programme Integrity | Accelerated Infraco Programme & Impact on MUDFA Impact of optional tie business case(s) Stability of SDS Design Programme Viability of SDS Design Programme, include full scope of works to complete (design legacy) tie approval of Stakeholder Imposed Programme subject to further and ongoing change tie recognition of Tender / Stakeholder imposed Programme change and work content, re-sequencing and commercial implications Delayed Infraco Programme & impact on MUDFA Prolongation through consequences of tie risk events Prolongation through consequences of AMIS risk events Competibility of Infraco Programme with MUDFA | R, F, D, H R, F, D, H R, F, D, H R, F, D, H R, F, D, H R, F, D, H R, F, D, H R, F, D, H R, F, D, H | 6 8 10 10 10 10 10 10 10 | 20 20 20 20 20 20 20 20 20 | 120 120 100 100 100 120 120 120 120 | Stable Stable Stable Stable Stable Stable Stable Down Stable | tie tie tie tie tie tie tie AMIS tie | S, Clark S, Clark S, Clark / A, Dolan S, Clark / A, Dolan S, Clark S, Clark S, Clark A, Malkin S, Clark | Demarcation schedule & delivery strategy Stakeholder management Design detail and definition and baseline programme to be agreed that meets the MUDFA outputs Design detail and definition and baseline programme to be agreed that meets the MUDFA outputs Design detail and definition and baseline programme to be agreed that meets the MUDFA outputs Design detail and definition and baseline programme to be agreed that meets the MUDFA outputs Design detail and definition and baseline programme to be agreed that meets the MUDFA outputs | | | | |
| 12 | Engineering Standards | Change in the requirements set by Utility Companies Consistency between SUC Engineering Standards and SDS outputs as approved by tie Robust and concise definition of interface between asset in situ and MUDFA installed apparatus SDS technical application of Engineering standards to support AMIS supply chain management SDS technical application of Engineering standards to support AMIS delivery Unreasonable application adopted by Utility Companies | R, F, D, H R, F, D, H R, F, D, H R, F, D, H R, F, D, H | 8 10 10 10 10 | 20 20 20 20 20 | 120 120 100 100 120 | Stable Stable Stable Stable Stable | tie tie tie tie tie | S, Clark S, Clark / A, Dolan S, Clark / A, Dolan S, Clark / A, Dolan S, Clark / A, Dolan | Stakeholder management Stakeholder management Design detail and definition and baseline programme to be agreed that meets the MUDFA outputs Design detail and definition and baseline programme to be agreed that meets the MUDFA outputs Design detail and definition and baseline programme to be agreed that meets the MUDFA outputs | | | | |
| 13 | Resource Planning / Availability | Resource profiling assessed in CARP subject to change 'tail end loading' as a consequence of tie risk item(s) Resource profiling assessed in CARP subject to change 'tail end loading' as a consequence of AMIS risk item(s) Balance shift between DLO and Sub-Contractors through risk event Programme change and impact on plant, machinery, stocked materials, supervision, traffic management capability and resources generally Balance shift between DLO and Sub-Contractors through AMIS risk event | R, F, D, H R, F, D, H R, F, D, H R, F, D, H R, F, D, H | 10 10 10 10 10 | 20 20 20 20 20 | 100 100 100 100 100 | Stable Up Stable Stable Stable | tie AMIS tie tie AMIS | S, Clark A, Malkin S, Clark S, Clark A, Malkin | Design detail and definition and baseline programme to be agreed that meets the MUDFA outputs Design detail and definition and baseline programme to be agreed that meets the MUDFA outputs Design detail and definition and baseline programme to be agreed that meets the MUDFA outputs Design detail and definition and baseline programme to be agreed that meets the MUDFA outputs Design detail and definition and baseline programme to be agreed that meets the MUDFA outputs | | | | |
| 14 | Value Management | Time constraints lead to inefficient and unworkable design solutions Time constraints result in lost VE opportunities and unworkable Value Engineering Incentive mechanism under the MUDFA Contract Loss of focus and drive on adding value to the design process and the management of the design outputs between contracted parties External factors influence design solutions | R, F, D, H R, F, D, H R, F, D, H R, F, D, H | 10 10 10 10 | 20 20 20 20 | 100 100 100 100 | Stable Stable Stable Stable | tie tie tie tie / tie | A, Dolan S, Clark / A, Dolan S, Clark / A, Malkin / A, Dolan S, Clark | Design detail and definition and baseline programme to be agreed that meets the MUDFA outputs Design detail and definition and baseline programme to be agreed that meets the MUDFA outputs Partnering workshop, joint objectives etc Stakeholder Management | | | | |
| 16 | Health & Safety | Death or injury of MUDFA employee and/or Subcontractors tie / AMIS to validate HSE operational requirements during PCS and CS Death or injury of tie employee and/or agent Death or injury to a member of the public | R, F, D, H R, F, D, H R, F, D, H R, F, D, H | 3 3 3 3 | 50 50 50 50 | 150 150 150 150 | Stable Stable Stable Stable | tie / AMIS tie / AMIS tie / AMIS tie / AMIS | S, Clark / A, Malkin S, Clark / A, Malkin S, Clark / A, Malkin S, Clark / A, Malkin | Application of and strict adherence to AMIS and tie policies and procedures Application of and strict adherence to AMIS and tie policies and procedures Application of and strict adherence to AMIS and tie policies and procedures Application of and strict adherence to AMIS and tie policies and procedures | | | | |
| 16 | Environmental and pollution | Major environmental incident Environmental incident tie / AMIS to validate HSE operational requirements during PCS and CS Prohibition Notices | R, F, D, H R, F, D, H R, F, D, H R, F, D, H | 3 3 3 3 | 50 50 50 50 | 150 150 150 150 | Stable Stable Stable Stable | AMIS tie / AMIS tie / AMIS tie / AMIS | A, Malkin A, Malkin S, Clark / A, Malkin S, Clark | Application of and strict adherence to AMIS and tie policies and procedures Application of and strict adherence to AMIS and tie policies and procedures Application of and strict adherence to AMIS and tie policies and procedures Application of and strict adherence to AMIS and tie policies and procedures | | | | |
| 17 | Legislation; known and unknown | Amendment to existing Tram legislation Transport Scotland Act General legislation | R, F, D, H R, F, D, H R, F, D, H | 3 10 5 | 20 20 5 | 80 100 50 | Stable Stable Stable | tie tie tie | S, Clark S, Clark S, Clark | Stakeholder management Stakeholder management Stakeholder management | | | | |
| 18 | Condition Surveys of adjacent properties | Dispute with stakeholders on impact of MUDFA Works Availability of Condition Surveys (SDS output) Dispute in content of Condition Surveys Failure to complete timely surveys | R, F, D, H R, F, D, H R, F, D, H R, F, D, H | 6 6 6 3 | 20 20 20 20 | 100 100 100 100 | Stable Stable Stable Stable | tie tie tie tie | S, Clark S, Clark S, Clark S, Clark | Stakeholder management Stakeholder management Stakeholder management Stakeholder management | | | | |
| 19 | Pre-Construction Services | Internal Governance not solidified Delay in agreement of Contract Deliverables Benchmark performance levels not agreed Responsiveness of Information Flow, catalogued in correspondence | R, F, D, H R, F, D, H R, F, D, H R, F, D, H | 6 3 3 10 | 20 5 20 20 | 120 50 50 100 | Stable Stable Stable Stable | tie tie / AMIS tie / AMIS tie | S, Clark S, Clark / A, Malkin S, Clark / A, Malkin S, Clark | Contract profiles and agreed objectives Contract profiles and agreed objectives Contract profiles and agreed objectives Contract profiles and agreed objectives | | | | |

| | |
|--|----------|
| Total Number of Risk Headings | 19 |
| Total Number of Individual Risk Events | 188 |
| Total Number of Red Risks | 57 64% |
| Total Number of Amber Risks | 44 42% |
| Total Number of Green Risks | 5 6% |
| | 106 100% |

| | |
|--|----------|
| Total Number of Stable Risks | 92 87% |
| Total Number of Increasing / New Risks | 14 13% |
| Total Number of Diminishing Risks | 0 0% |
| | 106 100% |

CEC01835674_0015

Mult-Utilities Division Framework Agreement Change Summary

| Notice of Change | | | | | | | | | Estimate Submission Procedure | | | | | | | Valuation of Change | | | | | Change Order (Y/E) | | | | | | | | | |
|------------------|---------------|---------------------|------------|-------------------------|---------------------|-------------------------|-------------------------------------|--------------------------|-------------------------------|--|--------------------------------------|--------------------------------------|--|--|--|---------------------|-------------------------------|------------------|--------------------------------|--|-------------------------------|---------------------------------|-------------------|---------------------------|--------------------|----------------------------|----------------------------|------------|--|--|
| Change Reference | Sub Reference | Generic Description | W09 Code | Date notified by the CR | Date raised by AMES | Date of further Letters | Letter Ref | Work Sector | Work Section | Brief Description | Date Estimate Required (Clause 48.3) | Date Estimate Provided (Clause 48.4) | Extension Agreed to Date of Estimate (Clause 48.4) | Date Estimate Submitted (Clause 46.4) OR | Acceptance by the contractor (Clause 46.3) | Estimate | Estimate referred to DDP? Y/N | Estimate Agreed? | BDO Rates and Prices CI 46.8.1 | Rates & Prices deducted from BDO CI 46.9.2 | Fair Rates & Prices CI 46.8.2 | Schedule Rates (Prov) CI 46.8.4 | Rate of Valuation | Estimate Valuation Agreed | Date issued by the | Notice of Change withdrawn | Further Action(s) Required | Action by? | | |
| 1 | | Water | | 21/11/2006 | 24/10/2006 | 13/12/2006 | 40 00 MUDFA/AMAS/PH 40.00 OLT.02473 | | | CCTV Sewer - Line 1 | | | | | | | | | | | | | | | | | | | | |
| 2 | | Water | | 12/02/2007 | | | 40.00 OLT.003079 | | | Survey of Sewer Manholes at Gager Depot | | | | | | | | | | | | | | | | | | | | |
| 3 | | Water | | | 30/09/2006 | | | | | Steel Service Pipes | | | | | | | | | | | | | | | | | | | | |
| 4 | | PC Services | | | | | | | | PC Services - Manhole Mechan (Extran Cable) | | | | | | | | | | | | | | | | | | | | |
| 5 | | PC Services | | | | | | | | Provide 3 no. site vehicles for 10 exclusive use of staff | | | | | | | | | | | | | | | | | | | | |
| 6 | | PC Services | | | | | | | | Provide 4 No. Additional telephone numbers for site offices | | | | | | | | | | | | | | | | | | | | |
| 7 | | PC Services | | | 28/11/2006 | | AM9304 | | | Propose temporary extension to Brighton Park notification | | | | | | | | | | | | | | | | | | | | |
| 8 | | PC Services | | | 04/12/2006 | | 160/12007 | 40 BU CAT1 (0.31 15AS/1E | | SDS Test Holes - Under Review | | | | | | | | | | | | | | | | | | | | |
| 9 | | PC Services | | | | | | | | PC Services - Requirement Management input to Design Detail and Division | | | | | | | | | | | | | | | | | | | | |
| 10 | | PC Services | | | 14/11/2006 | | | | | Provide 1 no. site vehicle & IT (Data) | | | | | | | | | | | | | | | | | | | | |
| 11 | | PC Services | | | | | | | | Construction Services Programme Rev 001 (Proposed) (Check requirements) | | | | | | | | | | | | | | | | | | | | |
| 12 | | PC Services | | | 28/11/2006 | | | | | MUDFA test holes | | | | | | | | | | | | | | | | | | | | |
| 13 | | PC Services | | | | | | | | Electronic copies to Non-PCS Deliverables | | | | | | | | | | | | | | | | | | | | |
| 14 | | PC Services | | | | | | | | Traffic Management | | | | | | | | | | | | | | | | | | | | |
| 15 | | PC Services | | | 29/11/2006 | | | | | EARL Change 5 | | | | | | | | | | | | | | | | | | | | |
| 16 | | PC Services | | | 07/12/2006 | | | | | Propose 100mm block holding to offset probability design risk and safeguard construction (L1) | | | | | | | | | | | | | | | | | | | | |
| 17 | | PC Services | | | 06/11/2007 | | | | | Emergency Works - 100mm | | | | | | | | | | | | | | | | | | | | |
| 18 | | PC Services | | | 29/01/2007 | | | | | Additional to Pre-construction Services, submittals and submittals | | | | | | | | | | | | | | | | | | | | |
| 19 | | PC Services | | | 28/01/2007 | | | | | Site Demos | | | | | | | | | | | | | | | | | | | | |
| 20 | | PC Services | IA WSE 003 | | 01/02/2007 | | | | | Expense program provided as in 2154 for removal of contaminated material considered in Contract Est. table | | | | | | | | | | | | | | | | | | | | |
| 21 | | PC Services | | | 15/02/2007 | | | | | Report to be a very low value rather than monthly, i.e. 13 per month | | | | | | | | | | | | | | | | | | | | |
| 22 | | PC Services | | | 04/02/2008 | | | | | El. Andover Scheme, additional non MUDFA works | | | | | | | | | | | | | | | | | | | | |
| 23 | | PC Services | | | | | | | | Transfer of responsibility for South Place sewer to AMES | | | | | | | | | | | | | | | | | | | | |
| 24 | | OT Works | | | | | | | | Provision of resources to support BT reach survey works | | | | | | | | | | | | | | | | | | | | |

| | |
|--------------|---------|
| Estimate | £ |
| Value | £0 |
| Agreed | £0 |
| Success Rate | #DIV/0! |

CEC01835674_0016



Infrastructure Services

| Item | Date Issued: | Reference | Title | Written Response Received | PCS Deliverable | Cost / Time Critical |
|------|--------------|----------------------------------|---|---------------------------|-----------------|----------------------|
| 1 | 16-Oct-06 | AMIS/tie/Letter/AM/Projects/001 | Revised Organisation Chart Covering Pre-Construction Services (PCS) Phase | Yes 12/12/06 | Yes | No |
| 2 | 16-Oct-06 | AMIS/tie/Letter/AM/Projects/002 | MUDFA Communication & Contact Details | Yes 12/12/06 | No | No |
| 3 | 23-Oct-06 | AMIS/tie/Letter/AM/Projects/003 | Revised Pre-Construction services (PCS) Programme | Yes 12/12/06 | Yes | Yes |
| 4 | 25-Oct-06 | AMIS/tie/Letter/AM/Projects/004 | Pre-Construction Services Input to Deliverables, Clause 2.52 interaction with SDS Programme | Yes 12/12/06 & 13/12/06 | Yes | Yes |
| 5 | 26-Oct-06 | AMIS/tie/Letter/AM/Projects/005 | Pre-Construction Service & Presentation of 1st Payment Application | Yes 12/12/06 | No | Yes |
| 6 | 27-Oct-06 | AMIS/tie/Letter/AM/Projects/006 | Pre-Construction Services Input to Deliverables | Yes 12/12/06 | Yes | Yes |
| 7 | 27-Oct-06 | AMIS/tie/Letter/AM/Projects/007 | SDS Utility Design Status: MUDFA Programme / Project Scope Workshop | Yes 12/12/06 | Yes | Yes |
| 8 | 30-Oct-06 | AMIS/tie/Letter/AM/Projects/008 | Contract A150 Contract Agreement | Yes 30/01/07 | No | Yes |
| 9 | 31-Oct-06 | AMIS/tie/Letter/AM/Projects/009 | MUDFA SDS & AMIS Utility Design Review Process | Yes 12/12/06 | Yes | Yes |
| 10 | 31-Oct-06 | AMIS/tie/Letter/AM/Projects/010 | MUDFA AMIS Project Progress Report - Contract Requirements 2.46 | No | Yes | No |
| 11 | 31-Oct-06 | AMIS/tie/Letter/AM/Projects/011 | MUDFA tie & AMIS Site Project Office @ Chancelot Mills, Edinburgh | No | Yes | Yes |
| 12 | 1-Nov-06 | AMIS/tie/Letter/AM/Projects/012 | MUDFA AMIS Risk and Mitigation Register - Preliminary Copy | Yes 12/12/06 | Yes | Yes |
| 13 | 2-Nov-06 | AMIS/tie/Letter/AM/Projects/013 | AMIS MUDFA Support Services to SDS Design Authority | Yes 12/12/06 | Yes | Yes |
| 14 | 2-Nov-06 | AMIS/tie/Letter/AM/Projects/014 | AMIS MUDFA "Preliminary" WBS and Workslope Definition Document | Yes 12/12/06 | Yes | Yes |
| 15 | 3-Nov-06 | AMIS/tie/Letter/AM/Projects/015 | AMIS MUDFA Request for Information & Assistance - Line 1, Section 5 | Yes 12/12/06 | Yes | Yes |
| 16 | 3-Nov-06 | AMIS/tie/Letter/AM/Projects/016 | AMIS MUDFA Request for Information & Assistance - Line 1, Section 7A | Yes 12/12/06 | Yes | Yes |
| 17 | 3-Nov-06 | AMIS/tie/Letter/AM/Projects/017 | AMIS MUDFA new E-Mail Address for all Future tie E-Mails | Yes 12/12/06 | No | No |
| 18 | 7-Nov-06 | AMIS/tie/Letter/AM/Projects/018 | AMIS MUDFA Request for Information & Assistance - Line 2, Section 3A | Yes 12/12/06 | Yes | Yes |
| 19 | 7-Nov-06 | AMIS/tie/Letter/AM/Projects/019 | AMIS MUDFA request for Information & Assistance Line 2, Section 3B | Yes 12/12/06 | Yes | Yes |
| 20 | 7-Nov-06 | AMIS/tie/Letter/AM/Projects/020 | AMIS MUDFA request for Information & Assistance Line 2, Section 3C | Yes 12/12/06 | Yes | Yes |
| 21 | 7-Nov-06 | AMIS/tie/Letter/AM/Projects/021 | AMIS MUDFA request for Information & Assistance Phase 2, Section 4 | Yes 12/12/06 | Yes | Yes |
| 22 | 7-Nov-06 | AMIS/tie/Letter/AM/Projects/022 | AMIS MUDFA request for Information & Assistance Line 1, Section 6 | Yes 12/12/06 | Yes | Yes |
| 23 | 7-Nov-06 | AMIS/tie/Letter/AM/Projects/023 | AMIS MUDFA Work Order Requirement - Clause 8.9, 8.10, 8.11 & 8.12 | Yes 13/12/06 | Yes | Yes |
| 24 | 7-Nov-06 | AMIS/tie/Letter/AM/Projects/024 | AMIS MUDFA Revised Payment Application - Pre-Construction Services (PCS) | Yes 13/12/06 | No | Yes |
| 25 | 7-Nov-06 | AMIS/tie/Letter/AM/Projects/025 | AMIS MUDFA Programme - tie Advanced and Enabling Works & Design Interface | No | Yes | Yes |
| 26 | 8-Nov-06 | AMIS/tie/Letter/KAG/Projects/026 | AMIS Insurance Certificate | No | No | No |
| 27 | 10-Nov-06 | AMIS/tie/Letter/AM/Projects/027 | AMIS MUDFA planning Interface & Demarcation Schedule | Yes 13/12/06 | Yes | Yes |
| 28 | 10-Nov-06 | AMIS/tie/Letter/KAG/Projects/028 | Clause 46 - Changes | Yes 13/12/06 | Yes | Yes |
| 29 | 14-Nov-06 | AMIS/tie/Letter/KAG/Projects/029 | Clause 13 - tie's Representative | Yes 13/12/06 & 30/01/07 | Yes | Yes |
| 30 | 13-Nov-06 | AMIS/tie/Letter/AM/Projects/030 | AMIS MUDFA Design and Construction Planning Interface | No | Yes | Yes |
| 31 | 13-Nov-06 | AMIS/tie/Letter/AM/Projects/031 | AMIS MUDFA Design Interface and Pre-Construction Services Programme | No | Yes | Yes |
| 32 | 14-Nov-06 | AMIS/tie/Letter/AM/Projects/032 | AMIS MUDFA Long Lead Times Items | No | Yes | Yes |
| 33 | 16-Nov-06 | AMIS/tie/Letter/AM/Projects/033 | tie & AMIS MUDFA Monthly Progress Meeting | Yes 13/12/06 | Yes | No |
| 34 | 16-Nov-06 | AMIS/tie/Letter/AM/Projects/034 | AMIS MUDFA Design and Construction Lead Times | Yes 13/12/06 | Yes | Yes |
| 35 | 17-Nov-06 | AMIS/tie/Letter/AM/Projects/035 | SDS Utility Detailed Outputs - Final SDS DD/AFC format and Detail | Yes 31/01/07 | Yes | Yes |
| 36 | 22-Nov-06 | AMIS/tie/Letter/AM/Projects/036 | Schedule 1, Clause 2.25 - AMIS Management System (PCS & CS Service), Schedule 2, Clause 3.2 - AMIS Method Statements (PCS & CS Service) | Yes 13/12/06 | Yes | No |

| Item | Date Issued: | Reference | Title | Written Response Received | PCS Deliverable | Cost / Time Critical |
|------|--------------|----------------------------------|--|---------------------------|-----------------|----------------------|
| 37 | 22-Nov-06 | AMIS/tie/Letter/AM/Projects/037 | Schedule 1, Clause 2.26 - Traffic management Plan (Draft) | No | Yes | Yes |
| 38 | 23-Nov-06 | AMIS/tie/Letter/AM/Projects/038 | Prime Cost Work Undertaken directly by Utility Specialist Contractors | Yes 26/01/07 | Yes | Yes |
| 39 | 23-Nov-06 | AMIS/tie/Letter/AM/Projects/039 | SDS Change Control System - AMIS / Site Raised Technical Queries (TQ's) | No | Yes | Yes |
| 40 | 24-Nov-06 | AMIS/tie/Letter/AM/Projects/040 | CEC & tie Ltd - MUDFA & Roads Reinstatement Requirements | No | Yes | No |
| 41 | 24-Nov-06 | AMIS/tie/Letter/AM/Projects/041 | tie ltd & Stakeholders Imposed Programme - Revision 01 | Yes 14/02/07 | Yes | Yes |
| 42 | 28-Nov-06 | AMIS/tie/Letter/KAG/Projects/042 | Anticipated Final Account (AFA) | Yes 13/12/06 | Yes | Yes |
| 43 | 30-Nov-06 | AMIS/tie/Letter/KAG/Projects/043 | Schedule 14 - Parent Company Guarantee | No | Yes | Yes |
| 44 | 30-Nov-06 | AMIS/tie/Letter/KAG/Projects/044 | Application For Payment nr.1 (Revised) | No | No | Yes |
| 45 | 30-Nov-06 | AMIS/tie/Letter/KAG/Projects/045 | Edinburgh Tram Business Case - Section 3A, 3B & 3C Options | No | No | Yes |
| 46 | 30-Nov-06 | AMIS/tie/Letter/KAG/Projects/046 | Clause 49 Payment | No | No | Yes |
| 47 | 4-Dec-06 | AMIS/tie/Letter/KAG/Projects/047 | Management & Mitigation of Risk | Yes 26/01/07 | Yes | Yes |
| 48 | 4-Dec-06 | AMIS/tie/Letter/KAG/Projects/048 | Clause 46 - Changes | No | Yes | Yes |
| 49 | 4-Dec-06 | AMIS/tie/Letter/AM/Projects/049 | Monthly Project Progress Report | No | Yes | Yes |
| 50 | 4-Dec-06 | AMIS/tie/Letter/AM/Projects/050 | Trail Holes & Contract Change Order Request | No | No | No |
| 51 | 5-Dec-06 | AMIS/tie/Letter/AM/Projects/051 | Delegated Financial Responsibility & Powers | No | Yes | Yes |
| 52 | 6-Dec-06 | AMIS/tie/Letter/AM/Projects/052 | Project Office Relocation at Chancelot Mills | Yes 13/12/06 | No | No |
| 53 | 6-Dec-06 | AMIS/tie/Letter/AM/Projects/053 | Construction Programme P3e WBS Structure | Yes 12/12/06 | Yes | Yes |
| 54 | 12-Dec-06 | AMIS/tie/Letter/KAG/Projects/054 | Phase 2 Ingliston Park & Ride Extension | No | No | No |
| 55 | 12-Dec-06 | AMIS/tie/Letter/AM/Projects/055 | SDS Design Outputs & AMIS Buildability - Ideas | No | No | Yes |
| 56 | 14-Dec-06 | AMIS/tie/Letter/AM/Projects/056 | Delegated Financial Responsibility & Powers | No | Yes | Yes |
| 57 | 14-Dec-06 | AMIS/tie/Letter/AM/Projects/057 | SDS Design Workscope Demarcation Meeting | Yes 30/01/07 | Yes | Yes |
| 58 | 15-Dec-06 | AMIS/tie/Letter/AM/Projects/058 | AMIS Response to tie Contract Correspondence | Yes 30/01/07 | Yes | Yes |
| 59 | 15-Dec-06 | AMIS/tie/Letter/AM/Projects/059 | Office Relocation to Western Harbour, Leith | No | No | No |
| 60 | 19-Dec-06 | AMIS/tie/Letter/KAG/Projects/060 | Anticipated Final Account (AFA) - 2nd Issue | Yes 31/01/07 & 01/02/07 | Yes | Yes |
| 61 | 19-Dec-06 | AMIS/tie/Letter/AM/Projects/061 | SDS & AMIS Utility Design Review Process | No | Yes | Yes |
| 62 | 29-Dec-06 | AMIS/tie/Letter/AM/Projects/062 | tie & AMIS MUDFA Monthly Progress Meeting | No | Yes | No |
| 63 | 29-Dec-06 | AMIS/tie/Letter/AM/Projects/063 | Draft Communication Plan – PCS Deliverables | No | Yes | No |
| 64 | 12-Jan-07 | AMIS/tie/Letter/AM/Projects/064 | Demarcation Meetings - December 2006 | Yes 30/01/2007 | No | Yes |
| 65 | 15-Jan-07 | AMIS/tie/Letter/AM/Projects/065 | tie ltd & Stakeholders Imposed Programme - Revision 03 Clause 2.7 | Yes 14/02/07 | Yes | Yes |
| 66 | 16-Jan-07 | AMIS/tie/Letter/AM/Projects/066 | Site Raised Technical Queries Procedure | Yes 30/01/07 | No | Yes |
| 67 | 18-Jan-07 | AMIS/tie/Letter/AM/Projects/067 | Prime Cost Sums - Scottish Power Cables | | No | Yes |
| 68 | 19-Jan-07 | AMIS/tie/Letter/AM/Projects/068 | Application For Payment nr.1 | Yes 30/01/07 | Yes | Yes |
| 69 | 19-Jan-07 | AMIS/tie/Letter/AM/Projects/069 | Pre Construction Services Input to Deliverables - Risk Management | No | Yes | Yes |
| 70 | 19-Jan-07 | AMIS/tie/Letter/AM/Projects/070 | Clause 46 - Changes | No | Yes | No |
| 71 | 19-Jan-07 | AMIS/tie/Letter/AM/Projects/071 | Anticipated Final Account (AFA) | Yes 31/01/07 | Yes | Yes |
| 72 | 19-Jan-07 | AMIS/tie/Letter/AM/Projects/072 | Traffic management Proposal for worksite (Casino Sq) | Yes 14/02/07 | Yes | No |
| 73 | 19-Jan-07 | AMIS/tie/Letter/AM/Projects/073 | Technical Queries - Section 1A (Trail Site @ Tower Str) | Yes 30/01/07 | No | Yes |
| 74 | 24-Jan-07 | AMIS/tie/Letter/AM/Projects/074 | Notice of change Nr 1 - Sewer Condition Survey | No | No | Yes |
| 75 | 29-Jan-07 | AMIS/tie/Letter/AM/Projects/075 | tie AMIS Progress Monthly Report | Yes 31/01/07 | Yes | No |
| 76 | 31-Jan-07 | AMIS/tie/Letter/AM/Projects/076 | Input to Traffic Modelling - Advanced Information from AMIS MUDFA | No | Yes | No |
| 77 | 31-Jan-07 | AMIS/tie/Letter/AM/Projects/077 | Ingliston Park & Ride Section 2 Trial Investigation | Yes 07/02/07 | No | Yes |
| 78 | 5-Feb-07 | AMIS/tie/Letter/AM/Projects/078 | Application for Payment Nr. 2 | Yes 19/02/07 | Yes | Yes |
| 79 | 5-Feb-07 | AMIS/tie/Letter/AM/Projects/079 | Network Printer & Scanner | | No | Yes |
| 80 | 5-Feb-07 | AMIS/tie/Letter/AM/Projects/080 | Ingliston Park n Ride Section 2 Trial holes | Yes 07/02/07 | No | Yes |
| 81 | 5-Feb-07 | AMIS/tie/Letter/AM/Projects/081 | Ingliston Park n Ride Initial Site Investigation | No | No | Yes |
| 82 | 6-Feb-07 | AMIS/tie/Letter/AM/Projects/082 | tie ltd & Stakeholders Imposed Programme - Revision 03 Clause 35.6 et al | Yes 14/02/07 | Yes | Yes |
| 83 | 6-Feb-07 | AMIS/tie/Letter/AM/Projects/083 | AMIS MUDFA Early Warning - Potential Construction Delays, Clause 8.8.1 | Yes 14/02/07 | Yes | Yes |
| 84 | 6-Feb-07 | AMIS/tie/Letter/KAG/Projects/084 | Anticipated Final Account (AFA) 3rd Submission | No | Yes | Yes |
| 85 | 7-Feb-07 | AMIS/tie/Letter/KAG/Projects/085 | Contract Agreement, Schedule 4 Bill of Quantities | No | No | Yes |
| 86 | 7-Feb-07 | AMIS/tie/Letter/KAG/Projects/086 | SDS Utility Status: MUDFA Programme/ Project Scope Workshop | No | No | Yes |
| 87 | 7-Feb-07 | AMIS/tie/Letter/KAG/Projects/087 | Contract Agreement, Schedule 4 Bill of Quantities | No | No | Yes |
| 88 | 9-Feb-07 | AMIS/tie/Letter/AM/Projects/088 | Traffic Management Proposal for Worksite 1AWSI003/000 (Casino Square) | Yes 14/02/07 | Yes | No |
| 89 | 15-Feb-07 | AMIS/tie/Letter/AM/Projects/089 | Gogar Depot Manhole Surveys – Sewer Systems, Dimensions & Readings | No | No | Yes |

| Item | Date issued: | Reference | Title | Written Response Received | PCS Deliverable | Cost / Time Critical |
|----------------------|--------------|---------------------------------|---|---------------------------|-----------------|----------------------|
| 90 | 13-Feb-07 | AMIS/tie/Letter/AM/Project/090 | Pre-Construction Services Programme – tie Ltd Approval | No | Yes | No |
| 91 | 13-Feb-07 | AMIS/tie/Letter/AM/Projects/091 | Model Worksite 1AWSI003/000 (Casino Square) | No | Yes | No |
| 92 | 16-Feb-07 | AMIS/tie/Letter/AM/Project/092 | Forth Ports Plc and Ocean Terminal Ltd and tie Ltd Agreement – Additional Schedule 13 Requirement (Unsigned Copy) | No | No | Yes |
| 93 | 16-Feb-07 | AMIS/tie/Letter/AM/Project/093 | MUDFA Design Hazard Log – SDS Deliverable and CDM Requirements | No | Yes | Yes |
| 94 | 16-Feb-07 | AMIS/tie/Letter/AM/Project/094 | Edinburgh Tram & Road Reinstatement – AMIS MUDFA Proposals | No | No | Yes |
| 95 | 16-Feb-07 | AMIS/tie/Letter/AM/Project/095 | MUDFA Programme /Project Scope workshop (Ref.01.tie/JS/AS dated 12.12.06 SDS Utility Design – Exemplars and tie Ltd Independent Technical Reviews | No | No | Yes |
| 96 | 16-Feb-07 | AMIS/tie/Letter/AM/Project/096 | SDS Design & SUC Technical Support Services & Intervention | No | No | Yes |
| 97 | 16-Feb-07 | AMIS/tie/Letter/AM/Project/097 | Tie Ltd Work Ordering, Planning Interface & SDS IFC Deliverables | No | Yes | Yes |
| 98 | 16-Feb-07 | AMIS/tie/Letter/AM/Project/098 | AMIS MUDFA Anticipated Final Account (AFA) Rev 2 | No | Yes | Yes |
| 99 | 16-Feb-07 | AMIS/tie/Letter/AM/Project/099 | SUC Betterment – Water & Gas Upgrades | No | No | Yes |
| 100 | 16-Feb-07 | AMIS/tie/Letter/AM/Project/100 | MUDFA Contract Administration - Spring Cleaning Meeting Wednesday 7 Feb 2007 @ 12:00 hrs | No | No | No |
| 101 | 20-Feb-07 | AMIS/tie/Letter/AM/Project/101 | MUDFA Report & Recommendation to Manage the "Gateway" from Pre – Construction Services to Construction Services | No | No | Yes |
| 102 | 19-Feb-07 | AMIS/tie/Letter/AM/Project/102 | Tie Ltd & Stakeholder Imposed Programme (Rev 3) | Yes 14/02/07 | Yes | Yes |
| 103 | 19-Feb-07 | AMIS/tie/Letter/AM/Project/103 | AMIS MUDFA Early Warning – Potential Construction Delays, Clause 8.8.1 | Yes 14/02/07 | Yes | Yes |
| 104 | 20-Feb-07 | AMIS/tie/Letter/AM/Project/104 | Schedules 6: Collateral Warranty | No | Yes | No |
| 105 | 20-Feb-07 | AMIS/tie/Letter/AM/Project/105 | Schedules 15: Collateral Warranties | No | Yes | No |
| 106 | 20-Feb-07 | AMIS/tie/Letter/AM/Project/106 | Schedules 13: Third Party Agreements | No | No | No |
| 107 | 21-Feb-07 | AMIS/tie/Letter/AM/Project/107 | Clause 13 – tie's Representative | No | No | No |
| 108 | 21-Feb-07 | AMIS/tie/Letter/AM/Project/108 | MUDFA – Dealing with Unidentified Apparatus or Unrecorded Artificial Obstructions | No | Yes | No |
| 109 | 21-Feb-07 | AMIS/tie/Letter/AM/Project/109 | AMIS MUDFA Communications Plan – PCS Deliverables 2.45 | No | Yes | No |
| 110 | 21-Feb-07 | AMIS/tie/Letter/AM/Project/110 | Section 1A – MacDonald Road to Picardy Place | No | Yes | No |
| 111 | 23-Feb-07 | AMIS/tie/Letter/AM/Project/111 | Payment Certificate No.2 | No | Yes | No |
| 112 | 23-Feb-07 | AMIS/tie/Letter/AM/Project/112 | Construction Services – Procurement Strategy | No | Yes | No |
| Summary | | | | | | |
| Received Response | | | | 54 | 48.2% | |
| Received No Response | | | | 58 | 51.8% | |
| Cost / Time Critical | | | | 81 | | |
| PCS Deliverable | | | | 76 | | |
| | | | | | 100.0% | |