

Date	Revision	Checked	Approved
24-Oct-08		scs	

■ V26 Baseline
 ■ Remaining Work
 ◇ V26 Baseline Milestone
 ▬ % Complete
■ Actual Work
 ■ Critical Remaining Work
 ◆ Milestone
 ▬ Summary

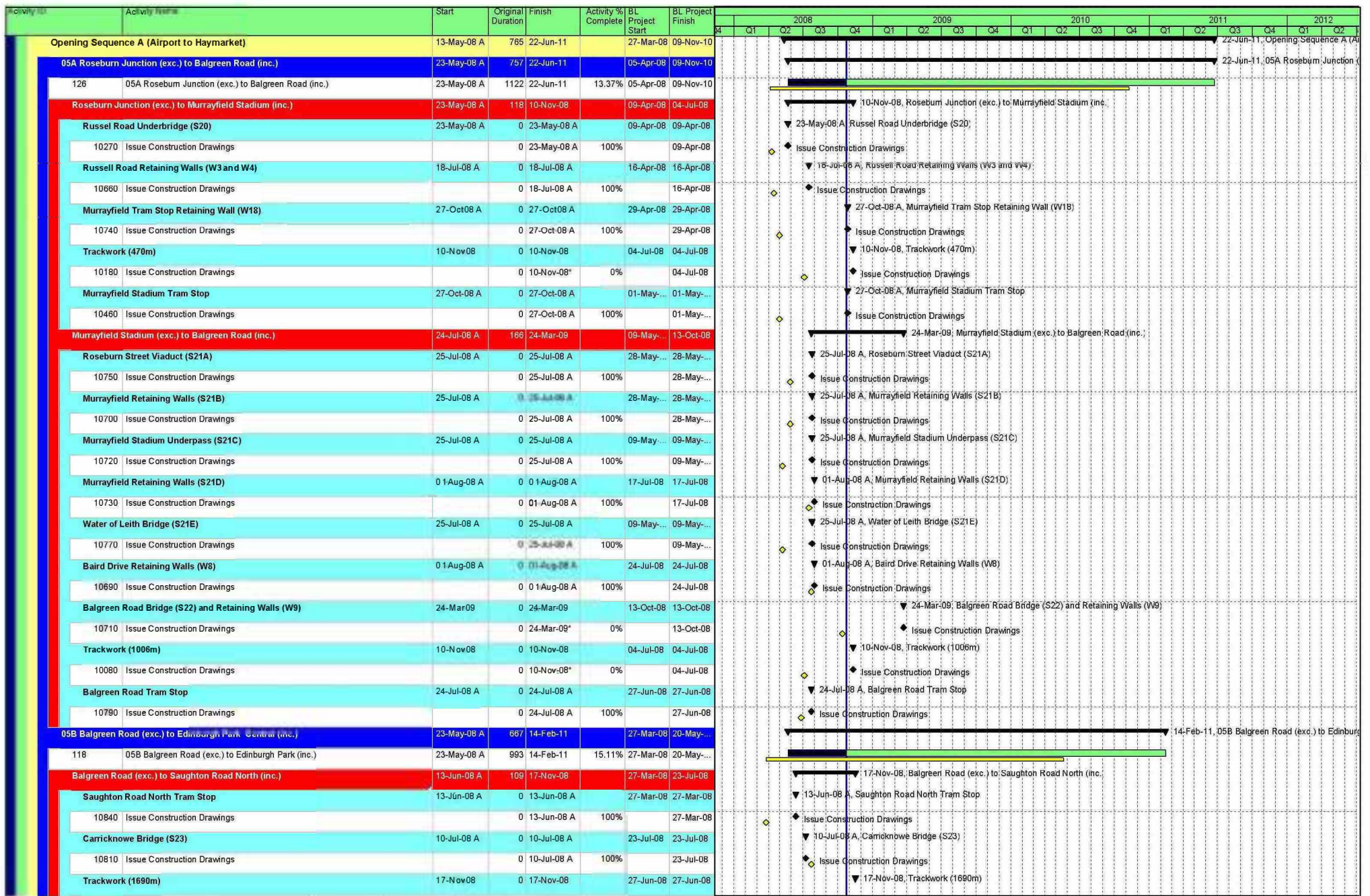
Activity ID	Activity Name	Start	Original Duration	Finish	Activity % Complete	BL Project Start	BL Project Finish	Gantt Chart (2008-2012)																							
12050	Issue Construction Drawings		0	27-May-09*	0%		15-May-...	Gantt Chart																							
Port of Leith (inc.) to Bernard Street (exc.)		03-Oct-08 A	16	17-Nov-08		28-Apr-08	06-Oct-08	Gantt Chart																							
Roadworks		17-Nov-08	0	17-Nov-08		06-Oct-08	06-Oct-08	Gantt Chart																							
12070	Issue Construction Drawings		0	17-Nov-08*	0%		06-Oct-08	Gantt Chart																							
Trackworks		17-Nov-08	0	17-Nov-08		06-Oct-08	06-Oct-08	Gantt Chart																							
12060	Issue Construction Drawings		0	17-Nov-08*	0%		06-Oct-08	Gantt Chart																							
Port of Leith Tram Stop		03-Oct-08 A	0	03-Oct-08 A		28-Apr-08	28-Apr-08	Gantt Chart																							
12080	Issue Construction Drawings		0	03-Oct-08 A	100%		28-Apr-08	Gantt Chart																							
Bernard Street (inc.) to Foot of the Walk (exc.)		22-Oct-08 A	0	22-Oct-08 A		28-Apr-08	06-Oct-08	Gantt Chart																							
Roadworks		22-Oct-08 A	0	22-Oct-08 A		06-Oct-08	06-Oct-08	Gantt Chart																							
12110	Issue Construction Drawings		0	22-Oct-08 A	100%		06-Oct-08	Gantt Chart																							
Bernard Street Tram Stop		22-Oct-08 A	0	22-Oct-08 A		28-Apr-08	28-Apr-08	Gantt Chart																							
12090	Issue Construction Drawings		0	22-Oct-08 A	100%		28-Apr-08	Gantt Chart																							
Trackworks		22-Oct-08 A	0	22-Oct-08 A		06-Oct-08	06-Oct-08	Gantt Chart																							
12100	Issue Construction Drawings		0	22-Oct-08 A	100%		06-Oct-08	Gantt Chart																							
01B Foot of the Walk (inc.) to McDonald Road (exc.)		15-Jul-08 A	705	12-May-11		15-Mar-08	31-Aug-10	Gantt Chart																							
21	01B Foot of the Walk (inc.) to McDonald Road (exc.)	15-Jul-08 A	1047	12-May-11	11.08%	15-Mar-08	31-Aug-10	Gantt Chart																							
Foot of the walk (inc.) to Balfour Street (exc.)		10-Sep-08 A	78	22-Oct-08 A		31-Mar-08	16-May-...	Gantt Chart																							
Roadworks		10-Sep-08 A	0	10-Sep-08 A		31-Mar-08	31-Mar-08	Gantt Chart																							
12140	Issue Construction Drawings		0	10-Sep-08 A	100%		31-Mar-08	Gantt Chart																							
Trackwork		10-Sep-08 A	0	10-Sep-08 A		16-May-...	16-May-...	Gantt Chart																							
12130	Issue Construction Drawings		0	10-Sep-08 A	100%		16-May-...	Gantt Chart																							
Foot of the Walk Tram Stop		22-Oct-08 A	0	22-Oct-08 A		28-Apr-08	28-Apr-08	Gantt Chart																							
12120	Issue Construction Drawings		0	22-Oct-08 A	100%		28-Apr-08	Gantt Chart																							
Balfour Street (inc.) to McDonald Road (exc.)		15-Jul-08 A	5	10-Sep-08 A		17-Mar-08	16-May-...	Gantt Chart																							
Trackwork		10-Sep-08 A	0	10-Sep-08 A		16-May-...	16-May-...	Gantt Chart																							
12150	Issue Construction Drawings		0	10-Sep-08 A	100%		16-May-...	Gantt Chart																							
Balfour Street Tram Stop		15-Jul-08 A	0	15-Jul-08 A		17-Mar-08	17-Mar-08	Gantt Chart																							
12170	Issue Construction Drawings		0	15-Jul-08 A	100%		17-Mar-08	Gantt Chart																							
Roadworks		10-Sep-08 A	0	10-Sep-08 A		16-May-...	16-May-...	Gantt Chart																							
12180	Issue Construction Drawings		0	10-Sep-08 A	100%		16-May-...	Gantt Chart																							
01C McDonald Road (inc.) to Princess Street West (exc.)		07-Oct-08 A	722	04-Aug-11		15-Mar-08	11-Mar-11	Gantt Chart																							
29	01C McDonald Road (inc.) to Princess Street West (exc.)	07-Oct-08 A	1073	04-Aug-11	6.06%	15-Mar-08	11-Mar-11	Gantt Chart																							
McDonald Road (inc.) to Picardy Place (exc.)		07-Oct-08 A	0	07-Oct-08 A		17-Mar-08	30-May-...	Gantt Chart																							
McDonald Road Tram Stop		07-Oct-08 A	0	07-Oct-08 A		17-Mar-08	17-Mar-08	Gantt Chart																							
12180	Issue Construction Drawings		0	07-Oct-08 A	100%		17-Mar-08	Gantt Chart																							
Trackworks		07-Oct-08 A	0	07-Oct-08 A		30-May-...	30-May-...	Gantt Chart																							
12190	Issue Construction Drawings		0	07-Oct-08 A	100%		30-May-...	Gantt Chart																							
Roadworks		07-Oct-08 A	0	07-Oct-08 A		30-May-...	30-May-...	Gantt Chart																							
12200	Issue Construction Drawings		0	07-Oct-08 A	100%		30-May-...	Gantt Chart																							
Picardy Place (inc.) to St. Andrews Square (exc.)		15-Dec-08	0	15-Dec-08		24-Apr-08	30-May-...	Gantt Chart																							

Date	Revision	Checked	Approved	Page 2 of 6	V26 Baseline	Remaining Work	V26 Baseline Milestone	% Complete
24-Oct-08		scs			Actual Work	Critical Remaining Work	Milestone	Summary

Activity ID	Activity Name	Start	Original Duration	Finish	Activity % Complete	BL Project Start	BL Project Finish	2008												2009				2010				2011				2012	
								Q4	Q1	Q2	Q3	Q4	Q1	Q2	Q3	Q4	Q1	Q2	Q3	Q4	Q1	Q2	Q3	Q4	Q1	Q2	Q3	Q4	Q1	Q2			
Roadworks								▼ 15-Dec-08, Roadworks																									
12230	Issue Construction Drawings	15-Dec-08	0	15-Dec-08*	0%	30-May-...	30-May-...	◆ Issue Construction Drawings																									
Trackworks								▼ 15-Dec-08, Trackworks																									
12210	Issue Construction Drawings	15-Dec-08	0	15-Dec-08*	0%	30-May-...	30-May-...	◆ Issue Construction Drawings																									
Picardy Place Tram Stop								▼ 15-Dec-08, Picardy Place Tram Stop																									
12220	Issue Construction Drawings	15-Dec-08	0	15-Dec-08*	0%	24-Apr-08	24-Apr-08	◆ Issue Construction Drawings																									
St. Andrews Square (inc.) to Princes Street West (exc.)								▼ 07-Oct-08 A, St. Andrews Square (inc.) to Princes Street West (exc.)																									
Trackworks								▼ 07-Oct-08 A, Trackworks																									
12240	Issue Construction Drawings	07-Oct-08 A	0	07-Oct-08 A	100%	30-May-...	30-May-...	◆ Issue Construction Drawings																									
Roadworks								▼ 07-Oct-08 A, Roadworks																									
12250	Issue Construction Drawings	07-Oct-08 A	0	07-Oct-08 A	100%	30-May-...	30-May-...	◆ Issue Construction Drawings																									
Princes Street West Tram Stop								▼ 07-Oct-08 A, Princes Street West Tram Stop																									
12290	Issue Construction Drawings	07-Oct-08 A	0	07-Oct-08 A	100%	30-Apr-08	30-Apr-08	◆ Issue Construction Drawings																									
St Andrews Square Tram Stop								▼ 07-Oct-08 A, St Andrews Square Tram Stop																									
12260	Issue Construction Drawings	07-Oct-08 A	0	07-Oct-08 A	100%	31-Mar-08	31-Mar-08	◆ Issue Construction Drawings																									
01D Princes Street (inc.) to Haymarket (exc.)								▶ 11-Mar-11, 01D Princes Street (inc.) to Haymarket (exc.)																									
39	01D Princes Street (inc.) to Haymarket (exc.)	10-Nov-08	569	11-Mar-11	0%	29-Mar-08	07-Jun-10	▶ 10-Nov-08, Princes Street West (inc.) to Shadwick Place (exc.)																									
Princes Street West (inc.) to Shadwick Place (exc.)								▼ 10-Nov-08, Princes Street West (inc.) to Shadwick Place (exc.)																									
Roadworks								▼ 10-Nov-08, Roadworks																									
12270	Issue Construction Drawings	10-Nov-08	0	10-Nov-08*	0%	22-May-...	22-May-...	◆ Issue Construction Drawings																									
Trackworks (710m)								▼ 10-Nov-08, Trackworks (710m)																									
12280	Issue Construction Drawings	10-Nov-08	0	10-Nov-08*	0%	22-May-...	22-May-...	◆ Issue Construction Drawings																									
Shadwick Place (inc.) to Haymarket (exc.)								▼ 10-Nov-08, Shadwick Place (inc.) to Haymarket (exc.)																									
Roadworks								▼ 10-Nov-08, Roadworks																									
12310	Issue Construction Drawings	10-Nov-08	0	10-Nov-08*	0%	22-May-...	22-May-...	◆ Issue Construction Drawings																									
Trackwork								▼ 10-Nov-08, Trackwork																									
12320	Issue Construction Drawings	10-Nov-08	0	10-Nov-08*	0%	22-May-...	22-May-...	◆ Issue Construction Drawings																									
Shadwick Place Tram Stop								▼ 10-Nov-08, Shadwick Place Tram Stop																									
12300	Issue Construction Drawings	10-Nov-08	0	10-Nov-08*	0%	31-Mar-08	31-Mar-08	◆ Issue Construction Drawings																									
SECTION 2 HAYMARKET CORRIDOR								▶ 06-Aug-10, SECTION 2 HAYMARKET CORRIDOR																									
Opening Sequence A (Airport to Haymarket)								▶ 06-Aug-10, Opening Sequence A (Airport to Haymarket)																									
02A Haymarket Corridor								▶ 06-Aug-10, 02A Haymarket Corridor																									
48	02A Haymarket Corridor	31-Mar-08 A	515	06-Aug-10	0%	01-Apr-08	11-Jan-10	▶ 17-Nov-08, Haymarket (inc.) to Roseburn Junction (inc.)																									
Haymarket (inc.) to Roseburn Junction (inc.)								▼ 02-Jul-08 A, Haymarket Station Viaduct (S19)																									
10330	Issue Construction Drawings	02-Jul-08 A	0	02-Jul-08 A	100%	09-Apr-08	09-Apr-08	◆ Issue Construction Drawings																									
Trackwork (1135m)								▼ 17-Nov-08, Trackwork (1135m)																									
10340	Issue Construction Drawings	17-Nov-08	0	17-Nov-08*	0%	30-May-...	30-May-...	◆ Issue Construction Drawings																									
Haymarket Station Tram Stop								▼ 02-Jul-08 A, Haymarket Station Tram Stop																									
12350	Issue Construction Drawings	02-Jul-08 A	0	02-Jul-08 A	100%	09-Apr-08	09-Apr-08	◆ Issue Construction Drawings																									
SECTION 05 ROSEBURN JUNCTION TO GOGAR								▶ 22-Jun-11, SECTION 05 ROSEBURN JUNCTION TO GOGAR																									

Date	Revision	Checked	Approved
24-Oct-08		scs	

■ V26 Baseline
 ■ Remaining Work
 ◆ V26 Baseline Milestone
 ▶ % Complete
■ Actual Work
 ■ Critical Remaining Work
 ◆ Milestone
▶ Summary



Date	Revision	Checked	Approved
24-Oct-08		scs	

— V26 Baseline
 ■ Remaining Work
 ◇ V26 Baseline Milestone
 ▬ % Complete
▬ Actual Work
 ▬ Critical Remaining Work
 ◆ Milestone
 ▬ Summary



Date	Revision	Checked	Approved
24-Oct-08		scs	

■ V26 Baseline
 ■ Remaining Work
 ◇ V26 Baseline Milestone
 ▬ % Complete
■ Actual Work
 ■ Critical Remaining Work
 ◆ Milestone
▬ Summary