

Date	Revision	Checked	Approved
21-Nov-08		scs	

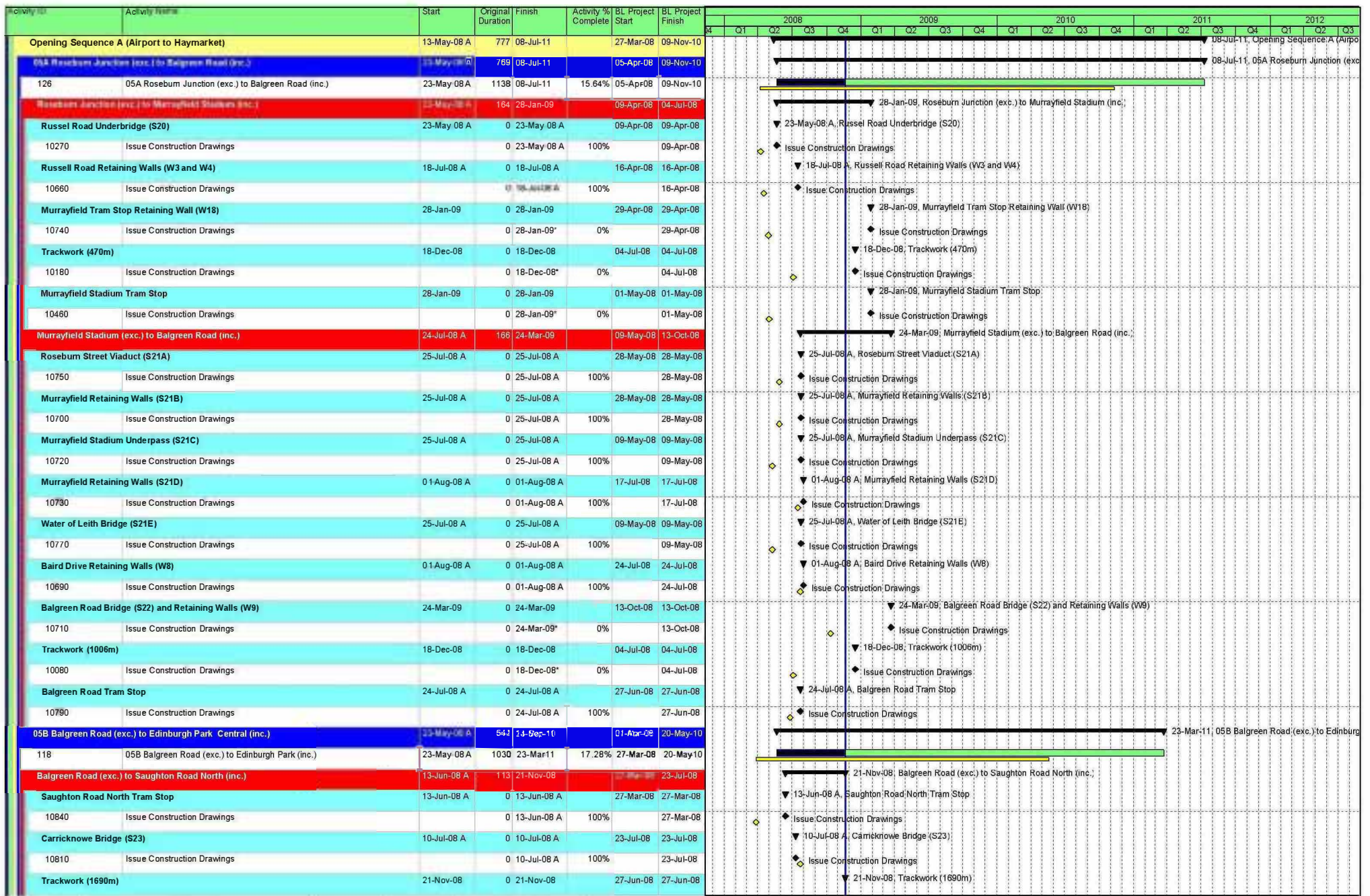


Activity ID	Activity Name	Start	Original Duration	Finish	Activity % Complete	BL Project Start	BL Project Finish	Gantt Chart (2008-2012)											
12050	Issue Construction Drawings		0	19-May-08*	0%		15-May-08	Gantt chart showing activity progress from 2008 Q1 to 2012 Q3.											
Port of Leith (inc.) to Bernard Street (exc.)		20-Oct-08 A	20	21-Nov-08		28-Apr-08	06-Oct-08	Summary bar for Port of Leith (inc.) to Bernard Street (exc.)											
Roadworks		21-Nov-08	0	21-Nov-08		06-Oct-08	06-Oct-08	Roadworks bar for Port of Leith (inc.) to Bernard Street (exc.)											
12070	Issue Construction Drawings		0	21-Nov-08*	0%		06-Oct-08	Gantt chart for Issue Construction Drawings (12070)											
Trackworks		21-Nov-08	0	21-Nov-08		06-Oct-08	06-Oct-08	Trackworks bar for Port of Leith (inc.) to Bernard Street (exc.)											
12060	Issue Construction Drawings		0	21-Nov-08*	0%		06-Oct-08	Gantt chart for Issue Construction Drawings (12060)											
Port of Leith Tram Stop		20-Oct-08 A	0	20-Oct-08 A		28-Apr-08	28-Apr-08	Summary bar for Port of Leith Tram Stop											
12080	Issue Construction Drawings		0	20-Oct-08 A	100%		28-Apr-08	Gantt chart for Issue Construction Drawings (12080)											
Bernard Street (inc.) to Foot of the Walk (exc.)		21-Nov-08	0	21-Nov-08		28-Apr-08	06-Oct-08	Summary bar for Bernard Street (inc.) to Foot of the Walk (exc.)											
Roadworks		21-Nov-08	0	21-Nov-08		06-Oct-08	06-Oct-08	Roadworks bar for Bernard Street (inc.) to Foot of the Walk (exc.)											
12110	Issue Construction Drawings		0	21-Nov-08*	0%		06-Oct-08	Gantt chart for Issue Construction Drawings (12110)											
Bernard Street Tram Stop		21-Nov-08	0	21-Nov-08		28-Apr-08	28-Apr-08	Summary bar for Bernard Street Tram Stop											
12090	Issue Construction Drawings		0	21-Nov-08*	0%		28-Apr-08	Gantt chart for Issue Construction Drawings (12090)											
Trackworks		21-Nov-08	0	21-Nov-08		06-Oct-08	06-Oct-08	Trackworks bar for Bernard Street (inc.) to Foot of the Walk (exc.)											
12100	Issue Construction Drawings		0	21-Nov-08*	0%		06-Oct-08	Gantt chart for Issue Construction Drawings (12100)											
01B Foot of the Walk (inc.) to McDonald Road (exc.)		15-Jul-08 A	733	22-Jun-11		15-Mar-08	31-Aug-10	Summary bar for 01B Foot of the Walk (inc.) to McDonald Road (exc.)											
21	01B Foot of the Walk (inc.) to McDonald Road (exc.)	15-Jul-08 A	1088	22-Jun-11	13.24%	15-Mar-08	31-Aug-10	Gantt chart for 01B Foot of the Walk (inc.) to McDonald Road (exc.)											
Foot of the walk (inc.) to Balfour Street (exc.)		10-Sep-08 A	98	21-Nov-08		31-Mar-08	16-May-08	Summary bar for Foot of the walk (inc.) to Balfour Street (exc.)											
Roadworks		10-Sep-08 A	0	10-Sep-08 A		31-Mar-08	31-Mar-08	Roadworks bar for Foot of the walk (inc.) to Balfour Street (exc.)											
12140	Issue Construction Drawings		0	10-Sep-08 A	100%		31-Mar-08	Gantt chart for Issue Construction Drawings (12140)											
Trackwork		10-Sep-08 A	0	10-Sep-08 A		16-May-08	16-May-08	Trackwork bar for Foot of the walk (inc.) to Balfour Street (exc.)											
12130	Issue Construction Drawings		0	10-Sep-08 A	100%		16-May-08	Gantt chart for Issue Construction Drawings (12130)											
Foot of the Walk Tram Stop		21-Nov-08	0	21-Nov-08		28-Apr-08	28-Apr-08	Summary bar for Foot of the Walk Tram Stop											
12120	Issue Construction Drawings		0	21-Nov-08*	0%		28-Apr-08	Gantt chart for Issue Construction Drawings (12120)											
Balfour Street (inc.) to McDonald Road (exc.)		15-Jul-08 A	5	10-Sep-08 A		17-Mar-08	16-May-08	Summary bar for Balfour Street (inc.) to McDonald Road (exc.)											
Trackwork		10-Sep-08 A	0	10-Sep-08 A		16-May-08	16-May-08	Trackwork bar for Balfour Street (inc.) to McDonald Road (exc.)											
12150	Issue Construction Drawings		0	10-Sep-08 A	100%		16-May-08	Gantt chart for Issue Construction Drawings (12150)											
Balfour Street Tram Stop		15-Jul-08 A	0	15-Jul-08 A		17-Mar-08	17-Mar-08	Summary bar for Balfour Street Tram Stop											
12170	Issue Construction Drawings		0	15-Jul-08 A	100%		17-Mar-08	Gantt chart for Issue Construction Drawings (12170)											
Roadworks		10-Sep-08 A	0	10-Sep-08 A		16-May-08	16-May-08	Roadworks bar for Balfour Street (inc.) to McDonald Road (exc.)											
12160	Issue Construction Drawings		0	10-Sep-08 A	100%		16-May-08	Gantt chart for Issue Construction Drawings (12160)											
01C McDonald Road (inc.) to Princess Street West (exc.)		01-Sep-08 A	766	11-Oct-11		15-Mar-08	11-Mar-11	Summary bar for 01C McDonald Road (inc.) to Princess Street West (exc.)											
29	01C McDonald Road (inc.) to Princess Street West (exc.)	01-Sep-08 A	1135	11-Oct-11	7.06%	15-Mar-08	11-Mar-11	Gantt chart for 01C McDonald Road (inc.) to Princess Street West (exc.)											
McDonald Road (inc.) to Picardy Place (exc.)		01-Sep-08 A	58	21-Nov-08		17-Mar-08	30-May-08	Summary bar for McDonald Road (inc.) to Picardy Place (exc.)											
McDonald Road Tram Stop		01-Sep-08 A	0	01-Sep-08 A		17-Mar-08	17-Mar-08	Summary bar for McDonald Road Tram Stop											
12180	Issue Construction Drawings		0	01-Sep-08 A	100%		17-Mar-08	Gantt chart for Issue Construction Drawings (12180)											
Trackworks		21-Nov-08	0	21-Nov-08		30-May-08	30-May-08	Trackworks bar for McDonald Road (inc.) to Picardy Place (exc.)											
12190	Issue Construction Drawings		0	21-Nov-08*	0%		30-May-08	Gantt chart for Issue Construction Drawings (12190)											
Roadworks		21-Nov-08	0	21-Nov-08		30-May-08	30-May-08	Roadworks bar for McDonald Road (inc.) to Picardy Place (exc.)											
12200	Issue Construction Drawings		0	21-Nov-08*	0%		30-May-08	Gantt chart for Issue Construction Drawings (12200)											
Picardy Place (inc.) to St Andrews Square (exc.)		14-Jan-09	0	14-Jan-09		24-Apr-08	30-May-08	Summary bar for Picardy Place (inc.) to St Andrews Square (exc.)											

Date	Revision	Checked	Approved
21-Nov-08		scs	

■ V26 Baseline
 ■ Remaining Work
 ■ Actual Work
 ■ Critical Remaining Work
 ◆ Milestone
 ◆ V26 Baseline Milestone
 ▬ % Complete
 ▬ Summary

Activity ID	Activity Name	Start	Original Duration	Finish	Activity % Complete	BL Project Start	BL Project Finish	2008												2009				2010				2011				2012		
								Q1	Q2	Q3	Q4	Q1	Q2	Q3	Q4	Q1	Q2	Q3	Q4	Q1	Q2	Q3	Q4	Q1	Q2	Q3	Q4	Q1	Q2	Q3				
Roadworks								▼ 14-Jan-09, Roadworks																										
12230	Issue Construction Drawings	14-Jan-09	0	14-Jan-09*	0%	30-May-08	30-May-08	◆ Issue Construction Drawings																										
Trackworks								▼ 14-Jan-09, Trackworks																										
12210	Issue Construction Drawings	14-Jan-09	0	14-Jan-09*	0%	30-May-08	30-May-08	◆ Issue Construction Drawings																										
Picardy Place Tram Stop								▼ 14-Jan-09, Picardy Place Tram Stop																										
12220	Issue Construction Drawings	14-Jan-09	0	14-Jan-09*	0%	24-Apr-08	24-Apr-08	◆ Issue Construction Drawings																										
St. Andrews Square (inc.) to Princes Street West (exc.)								▼ 21-Nov-08, St. Andrews Square (inc.) to Princes Street West (exc.)																										
Trackworks								▼ 21-Nov-08, Trackworks																										
12240	Issue Construction Drawings	21-Nov-08	0	21-Nov-08*	0%	30-May-08	30-May-08	◆ Issue Construction Drawings																										
Roadworks								▼ 21-Nov-08, Roadworks																										
12250	Issue Construction Drawings	21-Nov-08	0	21-Nov-08*	0%	30-May-08	30-May-08	◆ Issue Construction Drawings																										
Princes Street West Tram Stop								▼ 21-Nov-08, Princes Street West Tram Stop																										
12290	Issue Construction Drawings	21-Nov-08	0	21-Nov-08*	0%	30-Apr-08	30-Apr-08	◆ Issue Construction Drawings																										
St Andrews Square Tram Stop								▼ 21-Nov-08, St Andrews Square Tram Stop																										
12260	Issue Construction Drawings	21-Nov-08	0	21-Nov-08*	0%	31-Mar-08	31-Mar-08	◆ Issue Construction Drawings																										
01D Princes Street (inc.) to Haymarket (exc.)								▶ 28-Mar-11, 01D Princes Street (inc.) to Haymarket																										
39	01D Princes Street (inc.) to Haymarket (exc.)	02-Dec-08	565	28-Mar-11	0%	29-Mar-08	07-Jun-10	▶ 28-Mar-11, 01D Princes Street (inc.) to Haymarket																										
Princes Street West (inc.) to Shadwick Place (exc.)								▼ 02-Dec-08, Princes Street West (inc.) to Shadwick Place (exc.)																										
Roadworks								▼ 02-Dec-08, Roadworks																										
12270	Issue Construction Drawings	02-Dec-08	0	02-Dec-08*	0%	22-May-08	22-May-08	◆ Issue Construction Drawings																										
Trackworks (710m)								▼ 02-Dec-08, Trackworks (710m)																										
12280	Issue Construction Drawings	02-Dec-08	0	02-Dec-08*	0%	22-May-08	22-May-08	◆ Issue Construction Drawings																										
Shandwick Place (inc.) to Haymarket (exc.)								▼ 15-Dec-08, Shandwick Place (inc.) to Haymarket (exc.)																										
Roadworks								▼ 02-Dec-08, Roadworks																										
12310	Issue Construction Drawings	02-Dec-08	0	02-Dec-08*	0%	22-May-08	22-May-08	◆ Issue Construction Drawings																										
Trackwork								▼ 02-Dec-08, Trackwork																										
12320	Issue Construction Drawings	02-Dec-08	0	02-Dec-08*	0%	22-May-08	22-May-08	◆ Issue Construction Drawings																										
Shandwick Place Tram Stop								▼ 15-Dec-08, Shandwick Place Tram Stop																										
12300	Issue Construction Drawings	15-Dec-08	0	15-Dec-08*	0%	31-Mar-08	31-Mar-08	◆ Issue Construction Drawings																										
SECTION 2 HAYMARKET CORRIDOR								▶ 14-Sep-10, SECTION 2 HAYMARKET CORRIDOR																										
Opening Sequence A (Airport to Haymarket)								▶ 14-Sep-10, Opening Sequence A (Airport to Haymarket)																										
02A Haymarket Corridor								▶ 14-Sep-10, 02A Haymarket Corridor																										
48	02A Haymarket Corridor	31-Mar-08 A	542	14-Sep-10	17.56%	01-Apr-08	11-Jan-10	▶ 14-Sep-10, 02A Haymarket Corridor																										
Haymarket (inc.) to Roseburn Junction (inc.)								▼ 21-Nov-08, Haymarket (inc.) to Roseburn Junction (inc.)																										
Haymarket Station Viaduct (S19)								▼ 02-Jul-08 A, Haymarket Station Viaduct (S19)																										
10330	Issue Construction Drawings	02-Jul-08 A	0	02-Jul-08 A	100%	09-Apr-08	09-Apr-08	◆ Issue Construction Drawings																										
Trackwork (1135m)								▼ 21-Nov-08, Trackwork (1135m)																										
10340	Issue Construction Drawings	21-Nov-08	0	21-Nov-08*	0%	30-May-08	30-May-08	◆ Issue Construction Drawings																										
Haymarket Station Tram Stop								▼ 02-Jul-08 A, Haymarket Station Tram Stop																										
12350	Issue Construction Drawings	02-Jul-08 A	0	02-Jul-08 A	100%	09-Apr-08	09-Apr-08	◆ Issue Construction Drawings																										
SECTION 05 ROSEBURN JUNCTION TO GOGAR								▶ 08-Jul-11, SECTION 05 ROSEBURN JUNCTION TO GOGAR																										



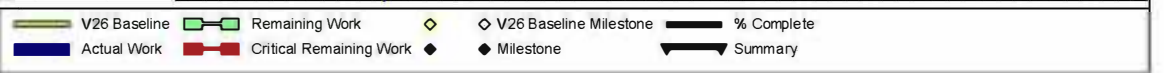
Date	Revision	Checked	Approved
21-Nov-08		scs	

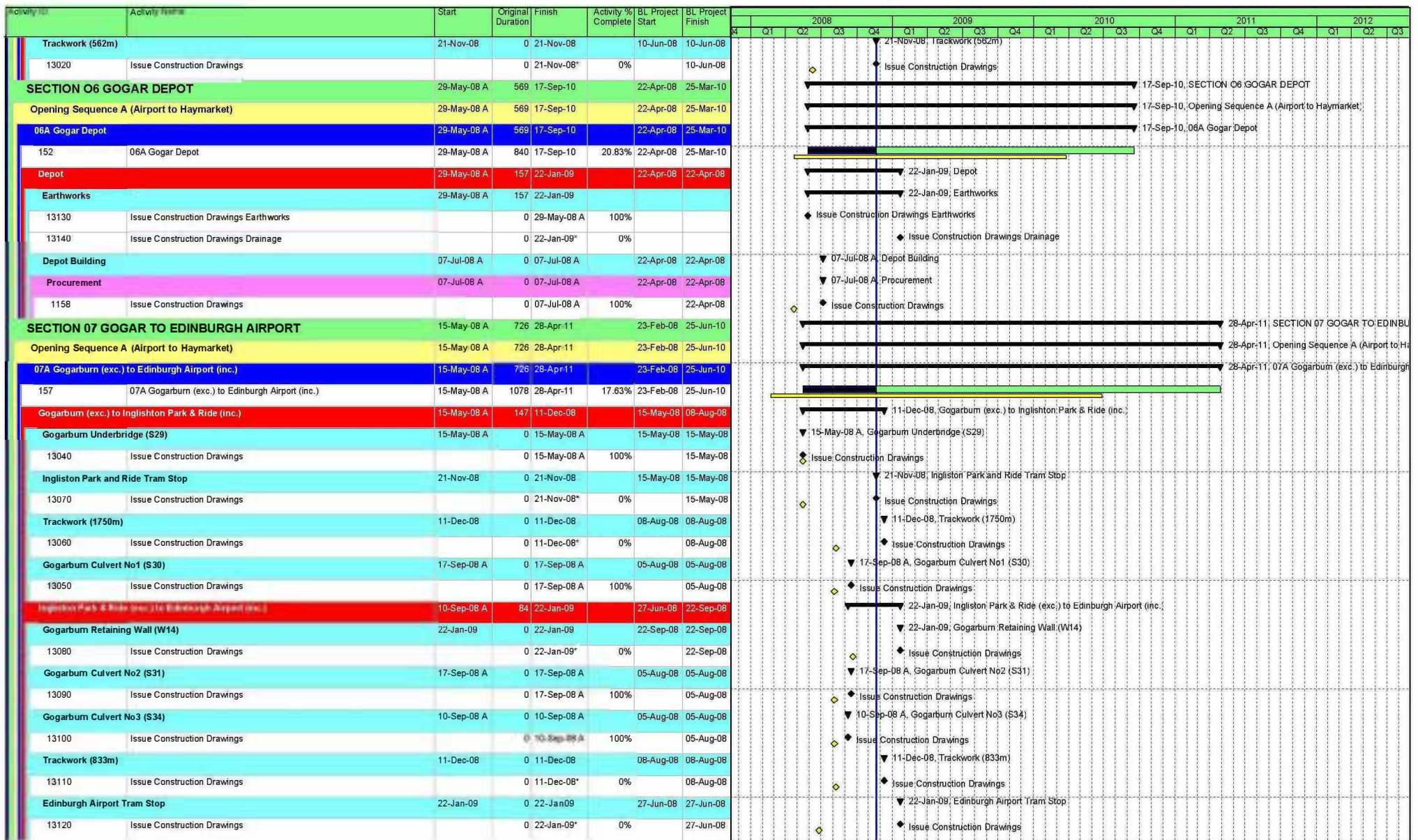
■ V26 Baseline
 ■ Remaining Work
 ◆ V26 Baseline Milestone
 ▬ % Complete
■ Actual Work
■ Critical Remaining Work
◆ Milestone
▬ Summary

Activity ID	Activity Name	Start	Original Duration	Finish	Activity % Complete	BL Project Start	BL Project Finish	2008												2009				2010				2011				2012		
								Q1	Q2	Q3	Q4	Q1	Q2	Q3	Q4	Q1	Q2	Q3	Q4	Q1	Q2	Q3	Q4	Q1	Q2	Q3								
12630	Issue Construction Drawings		0	21-Nov-08*	0%		27-Jun-08																											
Saughton Road North (exc.) to Bankhead (inc.)		11-Jul-08 A	20	21-Nov-08		13-May-08	27-Jun-08																											
Bankhead Retaining Wall (W11)		21-Nov-08	0	21-Nov-08		13-May-08	13-May-08																											
10860	Issue Construction Drawings		0	21-Nov-08*	0%		13-May-08																											
Bankhead Tram Stop		11-Jul-08 A	0	11-Jul-08 A		27-Jun-08	27-Jun-08																											
12870	Issue Construction Drawings		0	11-Jul-08 A	100%		27-Jun-08																											
Trackwork (1260m)		21-Nov-08	0	21-Nov-08		27-Jun-08	27-Jun-08																											
12890	Issue Construction Drawings		0	21-Nov-08*	0%		27-Jun-08																											
South Gyle Access Bridge (S26)		21-Nov-08	0	21-Nov-08		15-May-08	15-May-08																											
12880	Issue Construction Drawings		0	21-Nov-08*	0%		15-May-08																											
Bankhead (exc.) to Edinburgh Park Station (inc.)		11-Jul-08 A	93	21-Nov-08		27-Jun-08	27-Jun-08																											
Edinburgh Park Station Tram Stop		11-Jul-08 A	0	11-Jul-08 A		27-Jun-08	27-Jun-08																											
12910	Issue Construction Drawings		0	11-Jul-08 A	100%		27-Jun-08																											
Trackwork (790m)		21-Nov-08	0	21-Nov-08		27-Jun-08	27-Jun-08																											
12900	Issue Construction Drawings		0	21-Nov-08*	0%		27-Jun-08																											
Edinburgh Park Station (exc.) to Edinburgh Park Central (inc.)		23-May-08 A	127	21-Nov-08		27-Jun-08	08-Jul-08																											
Trackwork (854m)		21-Nov-08	0	21-Nov-08		27-Jun-08	27-Jun-08																											
12930	Issue Construction Drawings		0	21-Nov-08*	0%		27-Jun-08																											
Edinburgh Park Station Bridge (S27)		23-May-08 A	0	23-May-08 A		08-Jul-08	08-Jul-08																											
12940	Issue Construction Drawings		0	23-May-08 A	100%		08-Jul-08																											
Edinburgh Park Central Tram Stop		11-Jul-08 A	0	11-Jul-08 A		27-Jun-08	27-Jun-08																											
12920	Issue Construction Drawings		0	11-Jul-08 A	100%		27-Jun-08																											
05C Edinburgh Park Central (exc.) to Gogarburn (inc.)		13-May-08 A	731	04-May-11		29-Mar-08	09-Jul-10																											
137	05C Edinburgh Park (exc.) to Gogarburn (inc.)	13-May-08 A	1086	04-May-11	17.59%	29-Mar-08	09-Jul-10																											
Edinburgh Park (exc.) to Gyle Centre (inc.)		13-May-08 A	135	21-Nov-08		24-Apr-08	10-Jun-08																											
Gyle Centre Tram Stop Retaining Wall (W16)		13-May-08 A	0	13-May-08 A		24-Apr-08	24-Apr-08																											
12970	Issue Construction Drawings		0	13-May-08 A	100%		24-Apr-08																											
Trackwork (760m)		21-Nov-08	0	21-Nov-08		10-Jun-08	10-Jun-08																											
12950	Issue Construction Drawings		0	21-Nov-08*	0%		10-Jun-08																											
Gyle Centre Tram Stop		11-Sep-08 A	0	11-Sep-08 A		22-May-08	22-May-08																											
12960	Issue Construction Drawings		0	11-Sep-08 A	100%		22-May-08																											
Gyle Centre (exc.) to Depot Stop (inc.)		07-Oct-08 A	81	21-Nov-08		10-Jun-08	07-Nov-08																											
Depot Access Bridge (S32)		07-Oct-08 A	0	07-Oct-08 A		07-Nov-08	07-Nov-08																											
12990	Issue Construction Drawings		0	07-Oct-08 A	100%		07-Nov-08																											
Trackwork (562m)		21-Nov-08	0	21-Nov-08		10-Jun-08	10-Jun-08																											
10590	Issue Construction Drawings		0	21-Nov-08*	0%		10-Jun-08																											
A8 Underpass (W28)		28-Jul-08 A	0	28-Jul-08 A		10-Jul-08	10-Jul-08																											
12980	Issue Construction Drawings		0	28-Jul-08 A	100%		10-Jul-08																											
Depot Stop (exc.) to Gogarburn (inc.)		21-Nov-08	89	13-Apr-09		31-Mar-08	10-Jun-08																											
Gogarburn Tram Stop		13-Apr-09	0	13-Apr-09		31-Mar-08	31-Mar-08																											
13030	Issue Construction Drawings		0	13-Apr-09*	0%		31-Mar-08																											

Date	Revision	Checked	Approved
21-Nov-08		scs	

Page 5 of 6





Date	Revision	Checked	Approved
21-Nov-08		scs	

■ V26 Baseline
 ■ Remaining Work
 ◇ V26 Baseline Milestone
 ▬ % Complete
■ Actual Work
 ■ Critical Remaining Work
 ◆ Milestone
▬ Summary