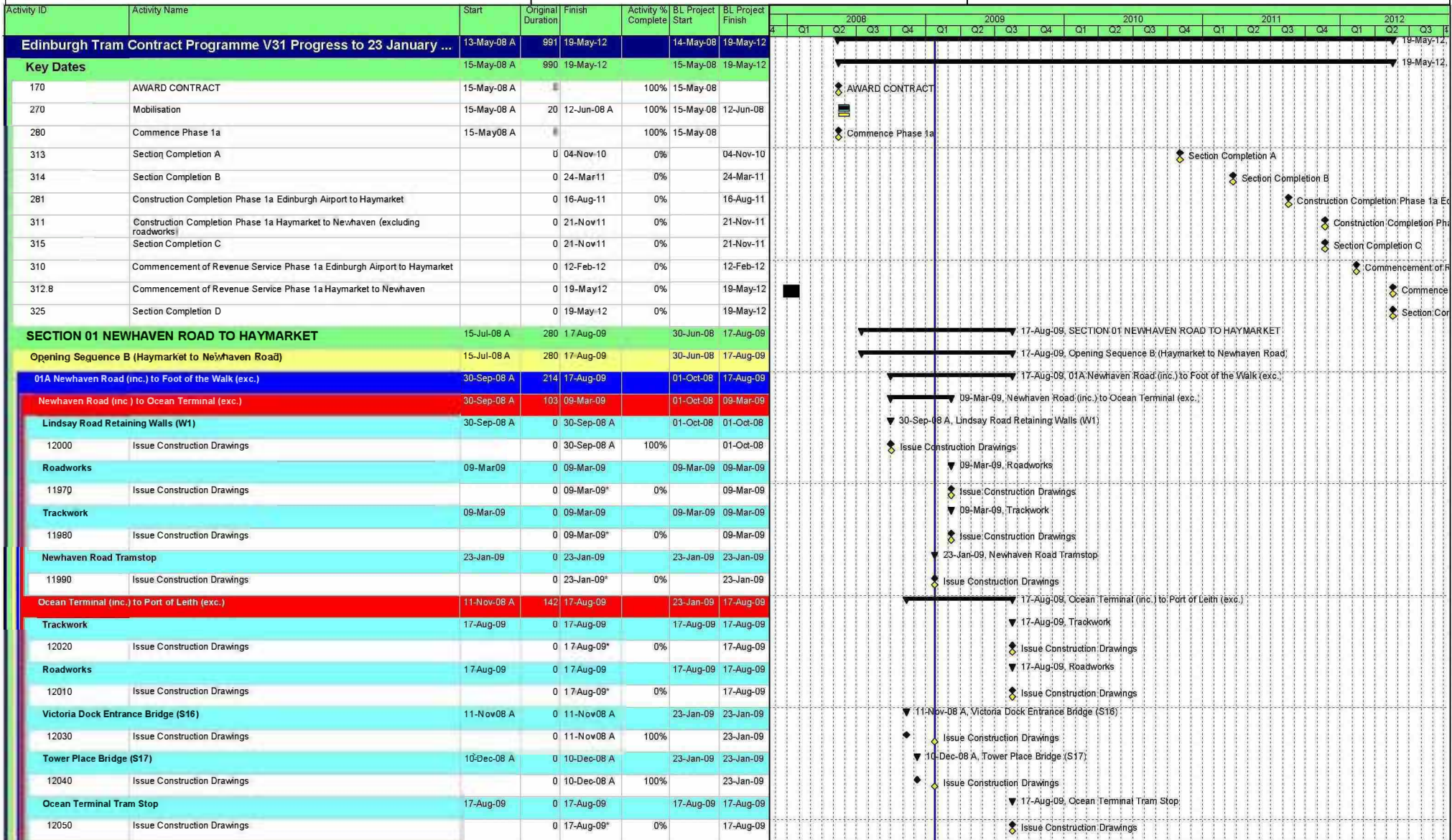


**Contract Programme adjusted for V31**  
**and Tracked for V40 of the Design Programme.**  
**(Progress to 23 January 2009)**

# EDINBURGH TRAM NETWORK



Date	Revision	Checked	Approved
23-Jan-09		scs	

■ V26 Baseline   
 ■ Remaining Work   
 ◇ V26 Baseline Milestone   
 ▬ % Complete  
■ Actual Work   
 ■ Critical Remaining Work   
 ◆ Milestone   
 ▬ Summary



Activity ID	Activity Name	Start	Original Duration	Finish	Activity % Complete	BL Project Start	BL Project Finish	2008												2009				2010				2011				2012			
								Q1	Q2	Q3	Q4	Q1	Q2	Q3	Q4	Q1	Q2	Q3	Q4	Q1	Q2	Q3	Q4	Q1	Q2	Q3	Q4	Q1	Q2	Q3	Q4				
<b>Port of Leith (inc.) to Bernard Street (exc.)</b>		23-Jan-09	0	23-Jan-09		23-Jan-09	23-Jan-09																												
<b>Roadworks</b>		23-Jan-09	0	23-Jan-09		23-Jan-09	23-Jan-09																												
12070	Issue Construction Drawings		0	23-Jan-09*	0%		23-Jan-09																												
<b>Trackworks</b>		23-Jan-09	0	23-Jan-09		23-Jan-09	23-Jan-09																												
12060	Issue Construction Drawings		0	23-Jan-09*	0%		23-Jan-09																												
<b>Port of Leith Tram Stop</b>		23-Jan-09	0	23-Jan-09		23-Jan-09	23-Jan-09																												
12080	Issue Construction Drawings		0	23-Jan-09*	0%		23-Jan-09																												
<b>Bernard Street (inc.) to Foot of the Walk (exc.)</b>		23-Jan-09	0	23-Jan-09		23-Jan-09	23-Jan-09																												
<b>Roadworks</b>		23-Jan-09	0	23-Jan-09		23-Jan-09	23-Jan-09																												
12110	Issue Construction Drawings		0	23-Jan-09*	0%		23-Jan-09																												
<b>Bernard Street Tram Stop</b>		23-Jan-09	0	23-Jan-09		23-Jan-09	23-Jan-09																												
12090	Issue Construction Drawings		0	23-Jan-09*	0%		23-Jan-09																												
<b>Trackworks</b>		23-Jan-09	0	23-Jan-09		23-Jan-09	23-Jan-09																												
12100	Issue Construction Drawings		0	23-Jan-09*	0%		23-Jan-09																												
<b>01B Foot of the Walk (inc.) to McDonald Road (exc.)</b>		15-Jul-08 A	138	23-Jan-09		30-Jun-08	23-Jan-09																												
<b>Foot of the walk (inc.) to Balfour Street (exc.)</b>		10-Sep-08 A	133	23-Jan-09		07-Jul-08	23-Jan-09																												
<b>Roadworks</b>		10-Sep-08 A	0	10-Sep-08 A		11-Sep-08	11-Sep-08																												
12140	Issue Construction Drawings		0	10-Sep-08 A	100%		11-Sep-08																												
<b>Trackwork</b>		10-Sep-08 A	0	10-Sep-08 A		07-Jul-08	07-Jul-08																												
12130	Issue Construction Drawings		0	10-Sep-08 A	100%		07-Jul-08																												
<b>Foot of the Walk Tram Stop</b>		23-Jan-09	0	23-Jan-09		23-Jan-09	23-Jan-09																												
12120	Issue Construction Drawings		0	23-Jan-09*	0%		23-Jan-09																												
<b>Balfour Street (inc.) to McDonald Road (exc.)</b>		10-Sep-08 A	0	10-Sep-08 A		07-Jul-08	07-Jul-08																												
<b>Trackwork</b>		10-Sep-08 A	0	10-Sep-08 A		07-Jul-08	07-Jul-08																												
12150	Issue Construction Drawings		0	10-Sep-08 A	100%		07-Jul-08																												
<b>Balfour Street Tram Stop</b>		15-Jul-08 A	0	15-Jul-08 A		30-Jun-08	30-Jun-08																												
12170	Issue Construction Drawings		0	15-Jul-08 A	100%		30-Jun-08																												
<b>Roadworks</b>		10-Sep-08 A	0	10-Sep-08 A		07-Jul-08	07-Jul-08																												
12160	Issue Construction Drawings		0	10-Sep-08 A	100%		07-Jul-08																												
<b>01C McDonald Road (inc.) to Princess Street West (exc.)</b>		01-Sep-08 A	115	24-Feb-09		01-Sep-08	24-Feb-09																												
<b>McDonald Road (inc.) to Picardy Place (exc.)</b>		01-Sep-08 A	93	23-Jan-09		01-Sep-08	23-Jan-09																												
<b>McDonald Road Tram Stop</b>		01-Sep-08 A	0	01-Sep-08 A		01-Sep-08	01-Sep-08																												
12180	Issue Construction Drawings		0	01-Sep-08 A	100%		01-Sep-08																												
<b>Trackworks</b>		23-Jan-09	0	23-Jan-09		23-Jan-09	23-Jan-09																												
12190	Issue Construction Drawings		0	23-Jan-09*	0%		23-Jan-09																												
<b>Roadworks</b>		23-Jan-09	0	23-Jan-09		23-Jan-09	23-Jan-09																												
12200	Issue Construction Drawings		0	23-Jan-09*	0%		23-Jan-09																												
<b>Picardy Place (inc.) to St. Andrews Square (exc.)</b>		10-Feb-09	10	24-Feb-09		10-Feb-09	24-Feb-09																												
<b>Roadworks</b>		24-Feb-09	0	24-Feb-09		24-Feb-09	24-Feb-09																												
12230	Issue Construction Drawings		0	24-Feb-09*	0%		24-Feb-09																												
<b>Trackworks</b>		24-Feb-09	0	24-Feb-09		24-Feb-09	24-Feb-09																												

Date	Revision	Checked	Approved
23-Jan-09		scs	

V26 Baseline  
 Remaining Work  
 Critical Remaining Work  
 V26 Baseline Milestone  
 Milestone  
 % Complete  
 Summary







Activity ID	Activity Name	Start	Original Duration	Finish	Activity % Complete	BL Project Start	BL Project Finish	2008												2009				2010				2011				2012			
								Q1	Q2	Q3	Q4	Q1	Q2	Q3	Q4	Q1	Q2	Q3	Q4	Q1	Q2	Q3	Q4	Q1	Q2	Q3	Q4	Q1	Q2	Q3	Q4				
<b>Russell Road Retaining Walls (W3 and W4)</b>								18-Jul-08 A, Russell Road Retaining Walls (W3 and W4)																											
10660	Issue Construction Drawings		0	18-Jul-08 A	100%	21-Jul-08	21-Jul-08	Issue Construction Drawings																											
<b>Murrayfield Tram Stop Retaining Wall (W18)</b>								12-Mar-09, Murrayfield Tram Stop Retaining Wall (W18)																											
10740	Issue Construction Drawings		0	12-Mar-09	0%	12-Mar-09	12-Mar-09	Issue Construction Drawings																											
<b>Trackwork (470m)</b>								23-Jan-09, Trackwork (470m)																											
10180	Issue Construction Drawings		0	23-Jan-09	0%	23-Jan-09	23-Jan-09	Issue Construction Drawings																											
<b>Murrayfield Stadium Tram Stop</b>								12-Mar-09, Murrayfield Stadium Tram Stop																											
10460	Issue Construction Drawings		0	12-Mar-09	0%	12-Mar-09	12-Mar-09	Issue Construction Drawings																											
<b>Murrayfield Stadium (exc.) to Balgreen Road (inc.)</b>								08-Apr-09, Murrayfield Stadium (exc.) to Balgreen Road (inc.)																											
<b>Roseburn Street Viaduct (S21A)</b>								25-Jul-08 A, Roseburn Street Viaduct (S21A)																											
10750	Issue Construction Drawings		0	25-Jul-08 A	100%	28-Jul-08	28-Jul-08	Issue Construction Drawings																											
<b>Murrayfield Retaining Walls (S21B)</b>								25-Jul-08 A, Murrayfield Retaining Walls (S21B)																											
10700	Issue Construction Drawings		0	25-Jul-08 A	100%	28-Jul-08	28-Jul-08	Issue Construction Drawings																											
<b>Murrayfield Stadium Underpass (S21C)</b>								25-Jul-08 A, Murrayfield Stadium Underpass (S21C)																											
10720	Issue Construction Drawings		0	25-Jul-08 A	100%	28-Jul-08	28-Jul-08	Issue Construction Drawings																											
<b>Murrayfield Retaining Walls (S21D)</b>								01-Aug-08 A, Murrayfield Retaining Walls (S21D)																											
10730	Issue Construction Drawings		0	01-Aug-08 A	100%	17-Jul-08	17-Jul-08	Issue Construction Drawings																											
<b>Water of Leith Bridge (S21E)</b>								25-Jul-08 A, Water of Leith Bridge (S21E)																											
10770	Issue Construction Drawings		0	25-Jul-08 A	100%	28-Jul-08	28-Jul-08	Issue Construction Drawings																											
<b>Baird Drive Retaining Walls (W8)</b>								01-Aug-08 A, Baird Drive Retaining Walls (W8)																											
10690	Issue Construction Drawings		0	01-Aug-08 A	100%	05-Aug-08	05-Aug-08	Issue Construction Drawings																											
<b>Balgreen Road Bridge (S22) and Retaining Walls (W9)</b>								08-Apr-09, Balgreen Road Bridge (S22) and Retaining Walls (W9)																											
10710	Issue Construction Drawings		0	08-Apr-09	0%	08-Apr-09	08-Apr-09	Issue Construction Drawings																											
<b>Trackwork (1006m)</b>								23-Jan-09, Trackwork (1006m)																											
10080	Issue Construction Drawings		0	23-Jan-09	0%	23-Jan-09	23-Jan-09	Issue Construction Drawings																											
<b>Balgreen Road Tram Stop</b>								24-Jul-08 A, Balgreen Road Tram Stop																											
10790	Issue Construction Drawings		0	24-Jul-08 A	100%	25-Jul-08	25-Jul-08	Issue Construction Drawings																											
<b>05B Balgreen Road (exc.) to Edinburgh Park Central (inc.)</b>								23-Jan-09, 05B Balgreen Road (exc.) to Edinburgh Park Central (inc.)																											
<b>Balgreen Road (exc.) to Saughton Road North (inc.)</b>								23-Jan-09, Balgreen Road (exc.) to Saughton Road North (inc.)																											
<b>Saughton Road North Tram Stop</b>								13-Jun-08 A, Saughton Road North Tram Stop																											
10840	Issue Construction Drawings		0	13-Jun-08 A	100%	16-Jun-08	16-Jun-08	Issue Construction Drawings																											
<b>Carricknowe Bridge (S23)</b>								10-Jul-08 A, Carricknowe Bridge (S23)																											
10810	Issue Construction Drawings		0	10-Jul-08 A	100%	14-Jul-08	14-Jul-08	Issue Construction Drawings																											
<b>Trackwork (1690m)</b>								23-Jan-09, Trackwork (1690m)																											
12830	Issue Construction Drawings		0	23-Jan-09	0%	23-Jan-09	23-Jan-09	Issue Construction Drawings																											
<b>Saughton Road North (exc.) to Bankhead (inc.)</b>								23-Jan-09, Saughton Road North (exc.) to Bankhead (inc.)																											
<b>Bankhead Retaining Wall (W11)</b>								23-Jan-09, Bankhead Retaining Wall (W11)																											
10860	Issue Construction Drawings		0	23-Jan-09	0%	23-Jan-09	23-Jan-09	Issue Construction Drawings																											
<b>Bankhead Tram Stop</b>								11-Jul-08 A, Bankhead Tram Stop																											
12870	Issue Construction Drawings		0	11-Jul-08 A	100%	24-Oct-08	24-Oct-08	Issue Construction Drawings																											
<b>Trackwork (1260m)</b>								23-Jan-09, Trackwork (1260m)																											

Date	Revision	Checked	Approved
23-Jan-09		scs	

V26 Baseline  
 Remaining Work  
 Critical Remaining Work  
 V26 Baseline Milestone  
 Milestone  
 % Complete  
 Summary







