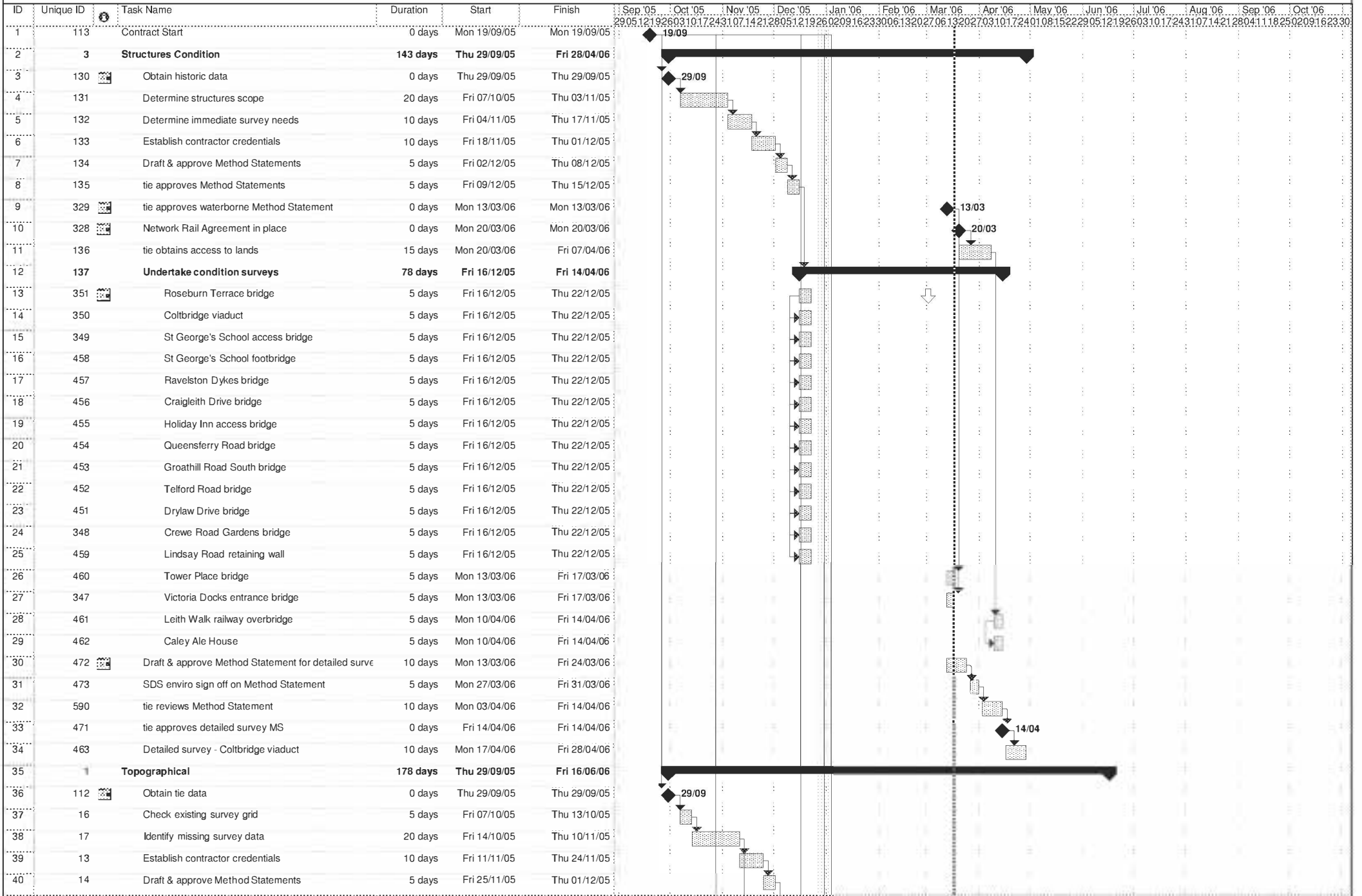
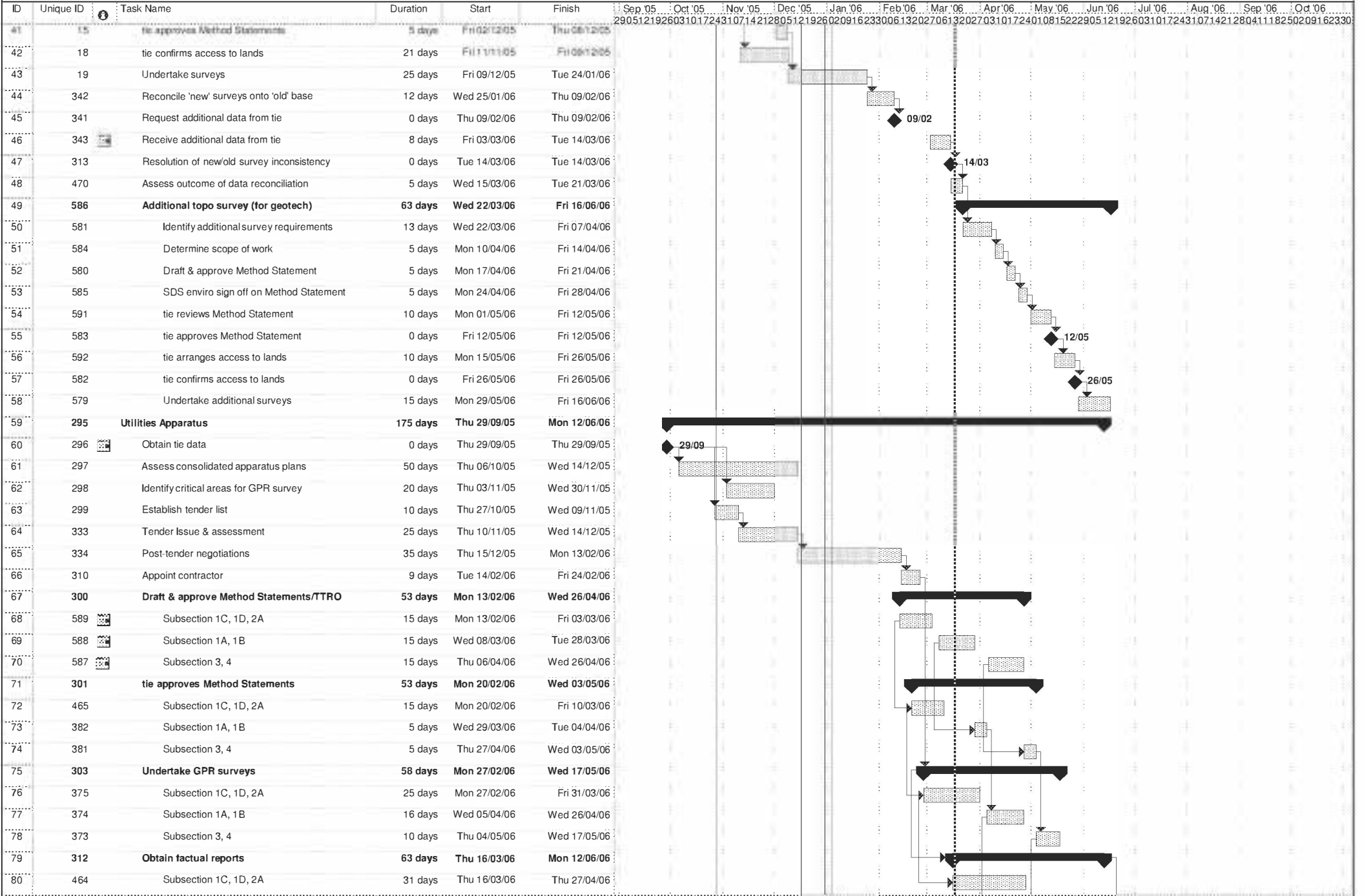


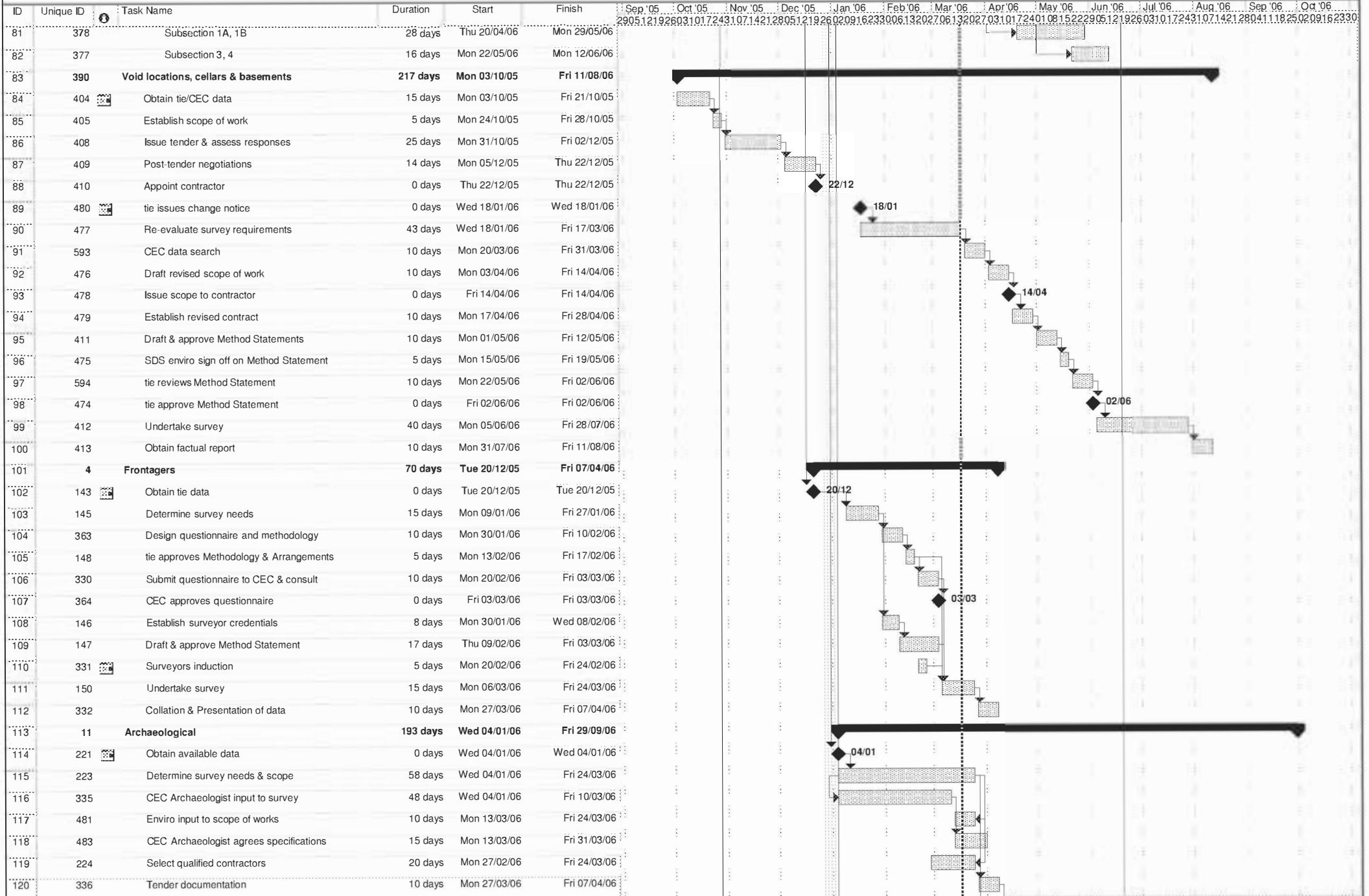
Surveys programme
Edinburgh Tram SDS



Surveys programme
Edinburgh Tram SDS



Surveys programme
Edinburgh Tram SDS

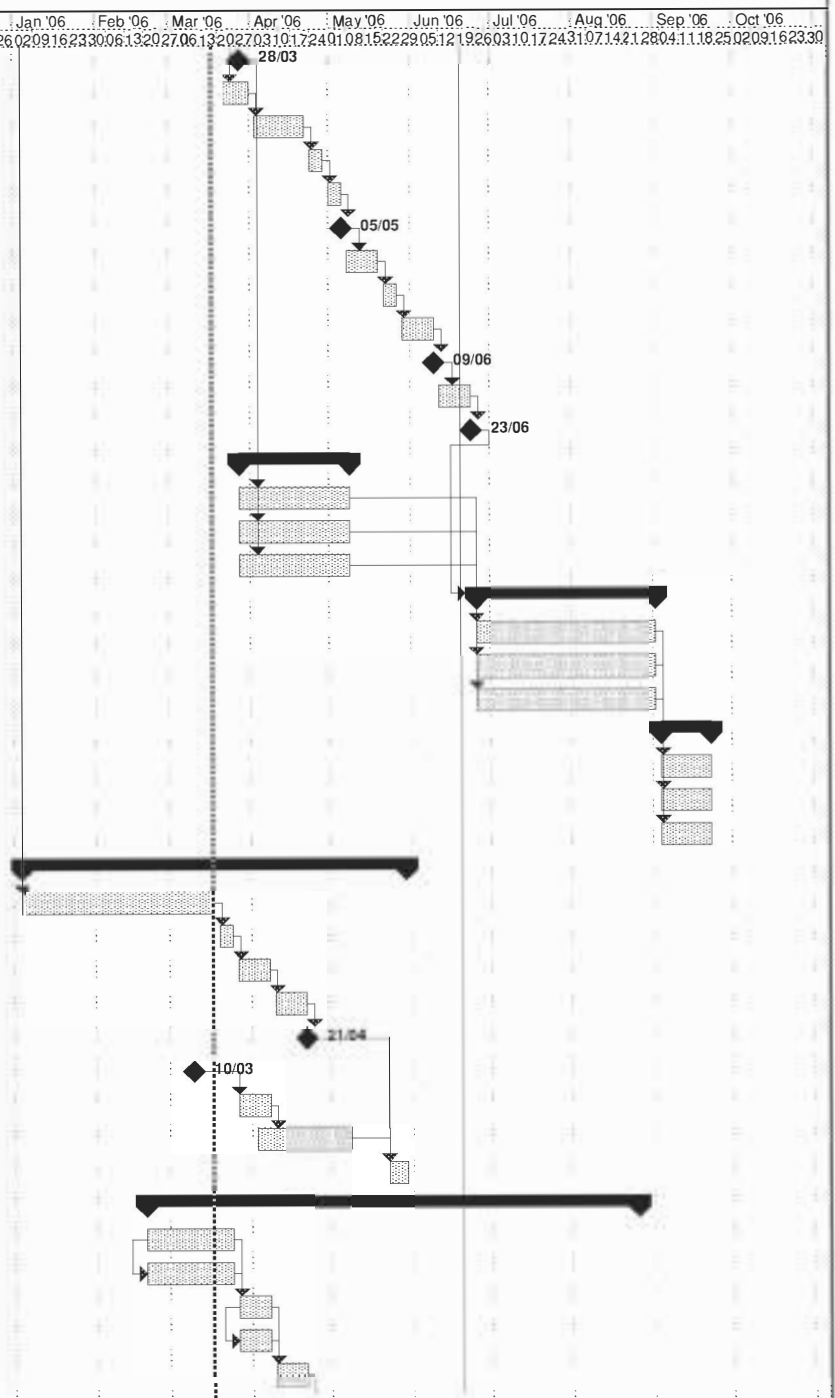


Surveys programme
Edinburgh Tram SDS

ID	Unique ID	Task Name	Duration	Start	Finish	Sep '05	Oct '05	Nov '05	Dec '05	Jan '06	Feb '06	Mar '06	Apr '06	May '06	Jun '06	Jul '06	Aug '06	Sep '06	Oct '06
121	337	Tender issue & assessment	15 days	Mon 10/04/06	Fri 28/04/06														
122	338	Post-tender negotiations	5 days	Mon 01/05/06	Fri 05/05/06														
123	339	Appoint contractor	0 days	Fri 05/05/06	Fri 05/05/06														
124	225	Draft & approve Method Statement	10 days	Mon 08/05/06	Fri 19/05/06														
125	502	SDS enviro sign off on Method Statement	5 days	Mon 22/05/06	Fri 26/05/06														
126	226	tie approves Method Statement	0 days	Fri 02/06/06	Fri 02/06/06														
127	227	tie approves access to land	0 days	Fri 19/05/06	Fri 19/05/06														
128	482	Meeting with SNH	0 days	Tue 28/03/06	Tue 28/03/06														
129	340	Pre-works env study & eco licences	40 days	Tue 28/03/06	Mon 22/05/06														
130	501	Area A (TBD)	10 days	Tue 28/03/06	Mon 10/04/06														
131	500	Area B (TBD)	20 days	Tue 28/03/06	Mon 24/04/06														
132	499	Area C (TBD)	40 days	Tue 28/03/06	Mon 22/05/06														
133	228	Undertake investigation (TBC)	40 days	Mon 05/06/06	Fri 28/07/06														
134	489	Area A (TBD)	40 days	Mon 05/06/06	Fri 28/07/06														
135	488	Area B (TBD)	40 days	Mon 05/06/06	Fri 28/07/06														
136	487	Area C (TBD)	40 days	Mon 05/06/06	Fri 28/07/06														
137	486	Review results (with CEC)	10 days	Mon 31/07/06	Fri 11/08/06														
138	492	Area A (TBD)	10 days	Mon 31/07/06	Fri 11/08/06														
139	491	Area B (TBD)	10 days	Mon 31/07/06	Fri 11/08/06														
140	490	Area C (TBD)	10 days	Mon 31/07/06	Fri 11/08/06														
141	485	Propose mitigation (with CEC)	10 days	Mon 14/08/06	Fri 25/08/06														
142	495	Area A (TBD)	10 days	Mon 14/08/06	Fri 25/08/06														
143	494	Area B (TBD)	10 days	Mon 14/08/06	Fri 25/08/06														
144	493	Area C (TBD)	10 days	Mon 14/08/06	Fri 25/08/06														
145	484	Timeline for potential 2nd stage of work	25 days	Mon 28/08/06	Fri 29/09/06														
146	498	Area A (TBD)	25 days	Mon 28/08/06	Fri 29/09/06														
147	497	Area B (TBD)	25 days	Mon 28/08/06	Fri 29/09/06														
148	496	Area C (TBD)	25 days	Mon 28/08/06	Fri 29/09/06														
149	2	Geotechnical	226 days	Tue 01/11/05	Fri 22/09/06														
150	117	Obtain tie/other historic data	0 days	Tue 01/11/05	Tue 01/11/05														
151	118	Prepare Desk Study Summary Plans	71 days	Tue 08/11/05	Fri 24/02/06														
152	599	Issue Desk Study plans	0 days	Fri 31/03/06	Fri 31/03/06														
153	119	Identify survey data needs	13 days	Wed 08/02/06	Fri 24/02/06														
154	120	Identify & approve qualified contractors	15 days	Wed 01/03/06	Tue 21/03/06														
155	316	Determine scope & sequence of work	17 days	Mon 27/02/06	Tue 21/03/06														
156	346	Enviro input to scope of work	17 days	Mon 27/02/06	Tue 21/03/06														
157	598	Contaminated land survey at Gogarburn	30 days	Mon 06/03/06	Fri 14/04/06														
158	597	Prepare scope of work	9 days	Mon 06/03/06	Thu 16/03/06														
159	596	tie reviews scope of work (TBC)	11 days	Fri 17/03/06	Fri 31/03/06														
160	595	EARL contractor starts on site (TBC)	10 days	Mon 03/04/06	Fri 14/04/06														

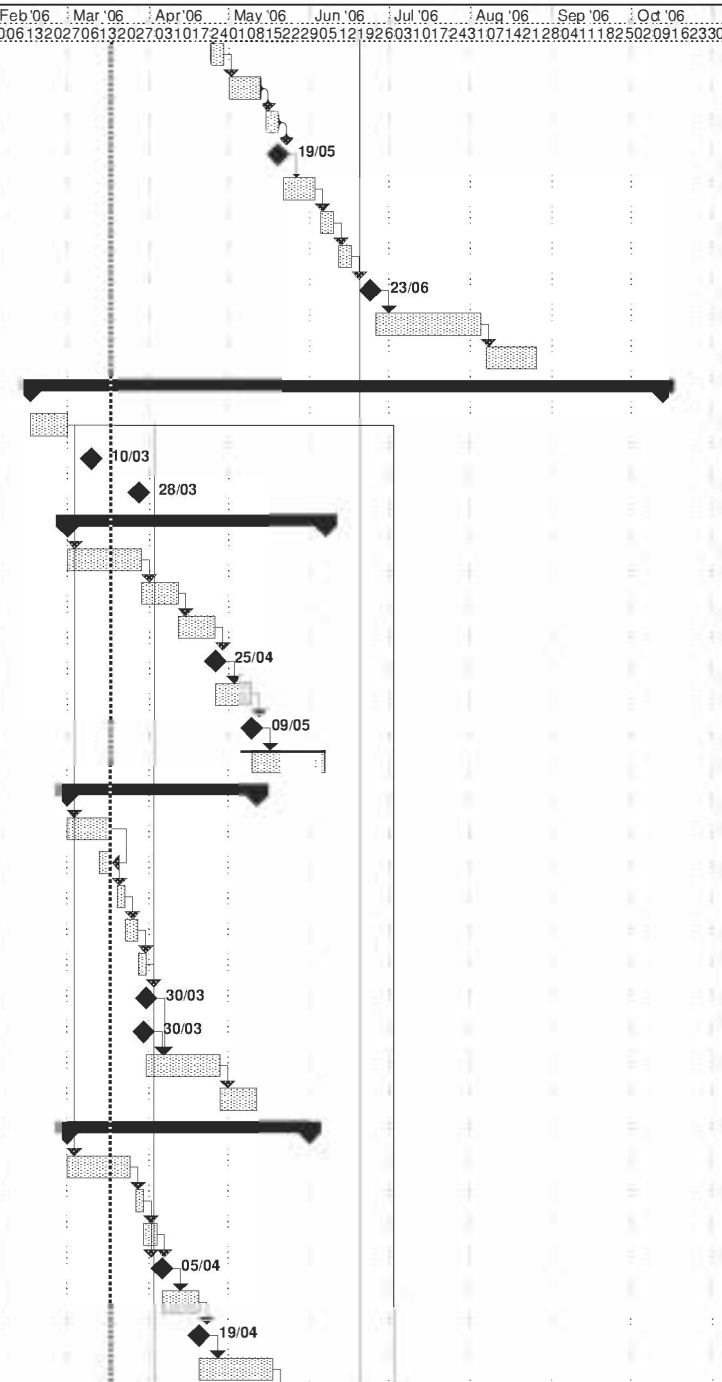
Surveys programme
Edinburgh Tram SDS

ID	Unique ID	Task Name	Duration	Start	Finish	Sep '05	Oct '05	Nov '05	Dec '05	Jan '06	Feb '06	Mar '06	Apr '06	May '06	Jun '06	Jul '06	Aug '06	Sep '06	Oct '06
161	384	Meeting with SNH	0 days	Tue 28/03/06	Tue 28/03/06								28/03						
162	317	Prepare & issue tender documents	8 days	Wed 22/03/06	Fri 31/03/06														
163	325	Tender period	15 days	Mon 03/04/06	Fri 21/04/06														
164	318	Assess & report on tenders	5 days	Mon 24/04/06	Fri 28/04/06														
165	320	Post-tender negotiation/clarification	5 days	Mon 01/05/06	Fri 05/05/06														
166	319	Appoint contractor	0 days	Fri 05/05/06	Fri 05/05/06								05/05						
167	121	Draft & approve Method Statements	10 days	Mon 08/05/06	Fri 19/05/06														
168	503	SDS enviro sign off on Method Statements	5 days	Mon 22/05/06	Fri 26/05/06														
169	600	tie reviews Method Statements	10 days	Mon 29/05/06	Fri 09/06/06														
170	122	tie approves Method Statements	0 days	Fri 09/06/06	Fri 09/06/06														
171	601	tie arranges access to lands	10 days	Mon 12/06/06	Fri 23/06/06														
172	123	tie confirms access to lands	0 days	Fri 23/06/06	Fri 23/06/06														
173	366	Pre-works env studies	30 days	Tue 28/03/06	Mon 08/05/06														
174	368	Area A (TBD)	30 days	Tue 28/03/06	Mon 08/05/06														
175	367	Area B (TBD)	30 days	Tue 28/03/06	Mon 08/05/06														
176	321	Area C (TBD)	30 days	Tue 28/03/06	Mon 08/05/06														
177	371	Geotech investigation	50 days	Mon 26/06/06	Fri 01/09/06														
178	370	Area A (TBD)	50 days	Mon 26/06/06	Fri 01/09/06														
179	369	Area B (TBD)	50 days	Mon 26/06/06	Fri 01/09/06														
180	124	Area C (TBD)	50 days	Mon 26/06/06	Fri 01/09/06														
181	309	Obtain contractors' factual reports	15 days	Mon 04/09/06	Fri 22/09/06														
182	389	Area A (TBD)	15 days	Mon 04/09/06	Fri 22/09/06														
183	388	Area B (TBD)	15 days	Mon 04/09/06	Fri 22/09/06														
184	468	Area C (TBD)	15 days	Mon 04/09/06	Fri 22/09/06														
185	5	Network Rail Assets	104 days	Wed 04/01/06	Mon 29/05/06														
186	262	Determine asset survey needs	53 days	Wed 04/01/06	Fri 17/03/06														
187	263	Determine nature of survey	5 days	Mon 20/03/06	Fri 24/03/06														
188	264	Draft & approve Method Statement (incl SDS enviro	10 days	Mon 27/03/06	Fri 07/04/06														
189	605	tie reviews Method Statement	10 days	Mon 10/04/06	Fri 21/04/06														
190	604	tie approves Method Statement	0 days	Fri 21/04/06	Fri 21/04/06								21/04						
191	603	Submit records request to Network Rail	0 days	Fri 10/03/06	Fri 10/03/06							10/03							
192	631	Records browsing and obtain copies	10 days	Mon 27/03/06	Fri 07/04/06														
193	385	Network Rail possession planning meetings process	26 days	Mon 03/04/06	Mon 08/05/06														
194	267	Undertake asset survey	5 days	Tue 23/05/06	Mon 29/05/06														
195	392	Pedestrian & cyclists	135 days	Mon 20/02/06	Fri 25/08/06														
196	414	Consult with CEC & JRC	25 days	Mon 20/02/06	Fri 24/03/06														
197	416	Obtain existing data	25 days	Mon 20/02/06	Fri 24/03/06														
198	417	Determine survey needs & scope	10 days	Mon 27/03/06	Fri 07/04/06														
199	572	Enviro input to scope of work	10 days	Mon 27/03/06	Fri 07/04/06														
200	575	Further consultation with CEC	10 days	Mon 10/04/06	Fri 21/04/06														



Surveys programme
Edinburgh Tram SDS

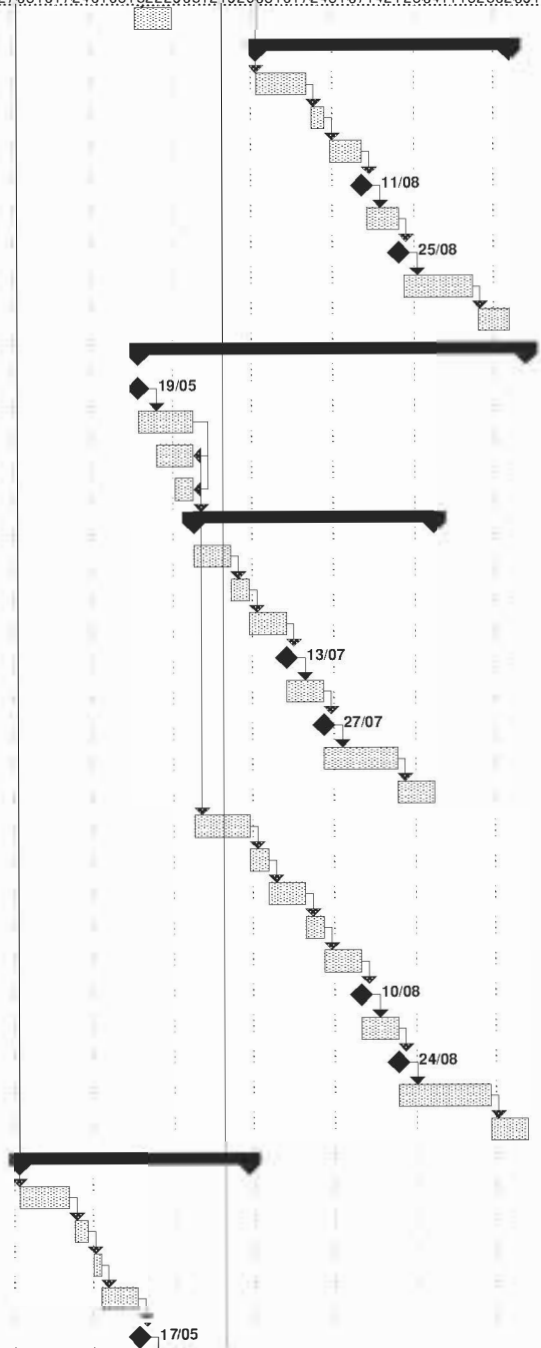
ID	Unique ID	Task Name	Duration	Start	Finish	Sep '05	Oct '05	Nov '05	Dec '05	Jan '06	Feb '06	Mar '06	Apr '06	May '06	Jun '06	Jul '06	Aug '06	Sep '06	Oct '06
201	419	Establish tender list	5 days	Mon 24/04/06	Fri 28/04/06														
202	420	Issue tender & assess responses	10 days	Mon 01/05/06	Fri 12/05/06														
203	421	Post-tender negotiations	5 days	Mon 15/05/06	Fri 19/05/06														
204	422	Appoint contractor	0 days	Fri 19/05/06	Fri 19/05/06														
205	423	Draft & approve Method Statements/TTRO	10 days	Mon 22/05/06	Fri 02/06/06														
206	574	SDS enviro sign off on Method Statement	5 days	Mon 05/06/06	Fri 09/06/06														
207	576	CEC agreement on Method Statement	5 days	Mon 12/06/06	Fri 16/06/06														
208	573	tie approves Method Statement	0 days	Fri 23/06/06	Fri 23/06/06														
209	424	Undertake survey	30 days	Mon 26/06/06	Fri 04/08/06														
210	425	Obtain factual report	15 days	Mon 07/08/06	Fri 25/08/06														
211	394	Ecological	172 days	Wed 15/02/06	Thu 12/10/06														
212	431	Obtain existing data	10 days	Wed 15/02/06	Tue 28/02/06														
213	439	Obtain construction programme	0 days	Fri 10/03/06	Fri 10/03/06														
214	469	Meeting with SNH	0 days	Tue 28/03/06	Tue 28/03/06														
215	566	Phase 1 update of Ecological Assessment	70 days	Wed 01/03/06	Tue 06/06/06														
216	565	Determine scope of work	20 days	Wed 01/03/06	Tue 28/03/06														
217	568	Draft & approve Method Statement	10 days	Wed 29/03/06	Tue 11/04/06														
218	630	tie reviews Method Statement	10 days	Wed 12/04/06	Tue 25/04/06														
219	567	tie approves Method Statement	0 days	Tue 25/04/06	Tue 25/04/06														
220	629	tie arranges access to lands	10 days	Wed 26/04/06	Tue 09/05/06														
221	564	tie approves access to land	0 days	Tue 09/05/06	Tue 09/05/06														
222	570	Undertake survey (walkover)	20 days	Wed 10/05/06	Tue 06/06/06														
223	511	Badger & otters survey at Gogarburn	52 days	Wed 01/03/06	Thu 11/05/06														
224	518	Determine scope of work	13 days	Wed 01/03/06	Fri 17/03/06														
225	528	Get consultant on approved lists	5 days	Mon 13/03/06	Fri 17/03/06														
226	517	Appoint consultant (JDC)	3 days	Mon 20/03/06	Wed 22/03/06														
227	516	Draft & approve Method Statement	3 days	Thu 23/03/06	Mon 27/03/06														
228	606	tie reviews Method Statement	3 days	Tue 28/03/06	Thu 30/03/06														
229	515	tie approves Method Statement	0 days	Thu 30/03/06	Thu 30/03/06														
230	520	tie approves access to lands	0 days	Thu 30/03/06	Thu 30/03/06														
231	519	Undertake survey	20 days	Fri 31/03/06	Thu 27/04/06														
232	510	Receive findings	10 days	Fri 28/04/06	Thu 11/05/06														
233	509	Aquatic species survey at Water of Leith	66 days	Wed 01/03/06	Wed 31/05/06														
234	523	Determine scope of work	18 days	Wed 01/03/06	Fri 24/03/06														
235	522	Draft & approve Method Statement	3 days	Mon 27/03/06	Wed 29/03/06														
236	607	tie reviews Method Statement	3 days	Thu 30/03/06	Mon 03/04/06														
237	521	tie approves Method Statement	0 days	Wed 05/04/06	Wed 05/04/06														
238	608	tie arranges access to lands	10 days	Thu 06/04/06	Wed 19/04/06														
239	508	tie approves access to lands	0 days	Wed 19/04/06	Wed 19/04/06														
240	525	Undertake survey	20 days	Thu 20/04/06	Wed 17/05/06														



Surveys programme

Edinburgh Tram SDS

ID	Unique ID	Task Name	Duration	Start	Finish	Sep '05	Oct '05	Nov '05	Dec '05	Jan '06	Feb '06	Mar '06	Apr '06	May '06	Jun '06	Jul '06	Aug '06	Sep '06	Oct '06
241	524	Receive findings	10 days	Thu 18/05/06	Wed 31/05/06														
242	561	Bat survey (for structures)	70 days	Mon 03/07/06	Fri 06/10/06														
243	560	Determine scope of work	15 days	Mon 03/07/06	Fri 21/07/06														
244	557	Draft & approve Method Statement	5 days	Mon 24/07/06	Fri 28/07/06														
245	618	tie reviews Method Statement	10 days	Mon 31/07/06	Fri 11/08/06														
246	556	tie approves Method Statement	0 days	Fri 11/08/06	Fri 11/08/06														
247	619	tie arranges access to land	10 days	Mon 14/08/06	Fri 25/08/06														
248	555	tie approves access to land	0 days	Fri 25/08/06	Fri 25/08/06														
249	554	Undertake survey	20 days	Mon 28/08/06	Fri 22/09/06														
250	553	Receive findings	10 days	Mon 25/09/06	Fri 06/10/06														
251	507	Tree survey	105 days	Fri 19/05/06	Thu 12/10/06														
252	532	Receive confirmed alignment	0 days	Fri 19/05/06	Fri 19/05/06														
253	531	Determine scope of work	15 days	Fri 19/05/06	Thu 08/06/06														
254	534	Establish tender list	10 days	Fri 26/05/06	Thu 08/06/06														
255	562	Enviro input to scope of work (bats)	5 days	Fri 02/06/06	Thu 08/06/06														
256	615	Bat survey	65 days	Fri 09/06/06	Thu 07/09/06														
257	617	Determine scope of work	10 days	Fri 09/06/06	Thu 22/06/06														
258	616	Draft & approve Method Statement	5 days	Fri 23/06/06	Thu 29/06/06														
259	620	tie reviews Method Statement	10 days	Fri 30/06/06	Thu 13/07/06														
260	614	tie approves Method Statement	0 days	Thu 13/07/06	Thu 13/07/06														
261	621	tie arranges access to land	10 days	Fri 14/07/06	Thu 27/07/06														
262	613	tie approves access to land	0 days	Thu 27/07/06	Thu 27/07/06														
263	611	Undertake survey	20 days	Fri 28/07/06	Thu 24/08/06														
264	609	Receive findings	10 days	Fri 25/08/06	Thu 07/09/06														
265	533	Issue tender & assess responses	15 days	Fri 09/06/06	Thu 29/06/06														
266	529	Appoint contractor	5 days	Fri 30/06/06	Thu 06/07/06														
267	538	Draft & approve Method Statements	10 days	Fri 07/07/06	Thu 20/07/06														
268	537	SDS enviro sign off on Method Statements	5 days	Fri 21/07/06	Thu 27/07/06														
269	633	tie reviews Method Statements	10 days	Fri 28/07/06	Thu 10/08/06														
270	536	tie approves Method Statements	0 days	Thu 10/08/06	Thu 10/08/06														
271	632	tie arranges access to lands	10 days	Fri 11/08/06	Thu 24/08/06														
272	535	tie confirms access to lands	0 days	Thu 24/08/06	Thu 24/08/06														
273	539	Undertake survey	25 days	Fri 25/08/06	Thu 28/09/06														
274	514	Receive findings	10 days	Fri 29/09/06	Thu 12/10/06														
275	513	Invasive species survey	63 days	Mon 03/04/06	Wed 28/06/06														
276	547	Determine scope of work	15 days	Mon 03/04/06	Fri 21/04/06														
277	542	Draft & approve Method Statements	5 days	Mon 24/04/06	Fri 28/04/06														
278	541	SDS enviro sign off on Method Statements	3 days	Mon 01/05/06	Wed 03/05/06														
279	622	tie reviews Method Statements	10 days	Thu 04/05/06	Wed 17/05/06														
280	540	tie approves Method Statements	0 days	Wed 17/05/06	Wed 17/05/06														



Surveys programme

Edinburgh Tram SDS

ID	Unique ID	Task Name	Duration	Start	Finish	Sep '05	Oct '05	Nov '05	Dec '05	Jan '06	Feb '06	Mar '06	Apr '06	May '06	Jun '06	Jul '06	Aug '06	Sep '06	Oct '06
281	623	tie arranges access to lands	10 days	Thu 18/05/06	Wed 31/05/06														
282	549	tie confirms access to lands	0 days	Wed 31/05/06	Wed 31/05/06														
283	512	Undertake survey	15 days	Thu 01/06/06	Wed 21/06/06														
284	548	Receive findings	5 days	Thu 22/06/06	Wed 28/06/06														
285	396	Utilities trial pits	80 days	Tue 13/06/06	Mon 02/10/06														
286	397	Assess GPR survey reports	10 days	Tue 13/06/06	Mon 26/06/06														
287	443	Determine survey needs & scope	10 days	Tue 27/06/06	Mon 10/07/06														
288	624	Tender & Method Statement period	4 wks	Tue 11/07/06	Mon 07/08/06														
289	442	Timeline for potential survey	8 wks	Tue 08/08/06	Mon 02/10/06														
290	398	Roads conditions	105 days	Mon 20/02/06	Fri 14/07/06														
291	445	Consult with CEC	25 days	Mon 20/02/06	Fri 24/03/06														
292	444	Assess data received from CEC	10 days	Mon 27/03/06	Fri 07/04/06														
293	399	Determine survey needs & scope	10 days	Mon 10/04/06	Fri 21/04/06														
294	625	Tender & Method Statement period	4 wks	Mon 24/04/06	Fri 19/05/06														
295	446	Timeline for potential survey	8 wks	Mon 22/05/06	Fri 14/07/06														
296	400	Stray current	40 days	Mon 01/05/06	Fri 23/06/06														
297	401	Timeline for potential survey	8 wks	Mon 01/05/06	Fri 23/06/06														
298	355	Hydrological	40 days	Mon 13/02/06	Fri 07/04/06														
299	362	Identify scope	5 days	Mon 13/02/06	Fri 17/02/06														
300	358	Draft & approve Method Statement	5 days	Mon 20/02/06	Fri 24/02/06														
301	571	SDS enviro sign off on Method Statement	5 days	Mon 27/02/06	Fri 03/03/06														
302	626	tie reviews Method Statement	10 days	Mon 06/03/06	Fri 17/03/06														
303	357	tie approves Method Statement	0 days	Fri 17/03/06	Fri 17/03/06														
304	627	tie arranges access to lands	10 days	Mon 20/03/06	Fri 31/03/06														
305	356	tie approves land access at New Ingliston Ltd	0 days	Fri 31/03/06	Fri 31/03/06														
306	359	Undertake survey at New Ingliston Ltd	5 days	Mon 03/04/06	Fri 07/04/06														
307	361	tie approves land access at Meadowfield	0 days	Fri 31/03/06	Fri 31/03/06														
308	360	Undertake survey at Meadowfield	5 days	Mon 03/04/06	Fri 07/04/06														
309	402	Drainage (potential)	83 days	Mon 01/05/06	Wed 23/08/06														
310	447	Consult with CEC	8 days	Mon 01/05/06	Wed 10/05/06														
311	448	Assess data received from CEC	10 days	Thu 11/05/06	Wed 24/05/06														
312	449	Determine survey needs & scope	5 days	Thu 25/05/06	Wed 31/05/06														
313	628	Tender & Method Statement period	4 wks	Thu 01/06/06	Wed 28/06/06														
314	450	Timeline for potential survey	8 wks	Thu 29/06/06	Wed 23/08/06														